

Massive choroidal hemorrhage after intravitreal administration of bevacizumab (Avastin®) for AMD followed by contralateral sympathetic ophthalmia

Dimitrios Brouzas
Chryssanthi Koutsandrea
Marilita Moschos
Spiros Papadimitriou
Ioannis Ladas
Michael Apostolopoulos

1st Eye Department, University
of Athens, Athens, Greece

Purpose: To report a severe ocular complication initiated ten days after intravitreal administration of bevacizumab (Avastin®), in a patient with exudative age-related macular degeneration (AMD).

Patients and method: Case report.

Results: Ten days after intravitreal injection of 1.25 mg Avastin®, the patient manifested acute loss of vision with excruciating pain. An extensive choroidal detachment was evident in close contact with the lens, which necessitated an emergency sclerotomy with reconstruction of the anterior chamber. Four months later, the eye proceeded to phthisis bulbi. Five months after the injection, the patient complained of mild pain, photophobia, and visual acuity deterioration from the fellow eye. The diagnosis of sympathetic ophthalmia was suggested and treated with intravitreal injections of triamcinolone acetonide every three months with good response, complicated by elevation of intraocular pressure which we managed with Ahmed valve implantation.

Conclusion: Serious ocular complications after intravitreal of Avastin® can not be excluded, including massive choroidal hemorrhage and sympathetic ophthalmia of the fellow eye.

Keywords: Avastin® complication, intravitreal injection, choroidal detachment, Phthisis bulbi, sympathetic ophthalmia

Introduction

Intravitreal administration of bevacizumab (Avastin®; Genentech, Inc., San Francisco, CA), a humanized monoclonal antibody to vascular endothelial growth factor (VEGF), has been reported to help in age-related macular degeneration (AMD)¹⁻³ and in regression of retinal and iris neovascularization.^{4,5}

Case report

A 75-year-old male without history of ocular surgical intervention had an intravitreal injection of 1.25 mg bevacizumab (Avastin®) in the right eye (RE) because of exudative age-related macular degeneration. The patient had mild hypertension and was on metoprolol 50 mg tablets (Lopressor®) bid. The patient did not have bleeding tendency, history of liver disease, and was not on anticoagulants.

Ten days after intravitreal injection, he manifested acute loss of vision with excruciating pain in the RE and he was admitted to our hospital. On presentation, his best-corrected visual acuity was no light perception (NLP) in the RE and 3/10 from the left eye (LE). The patient had an unbearable continuous excruciated pain in his RE. The conjunctiva was congestive, the cornea edematous, and the anterior chamber (AC) was collapsed (Figure 1A). An extensive choroidal detachment was evident in

Correspondence: Dimitrios Brouzas
10 G. Papadreu str, Athens 162 31,
Greece
Tel +30 210 765 2909
Fax +30 210 765 2909
Email brouzas@yahoo.com

close contact with the lens (Figures 1B, 1C). The intraocular pressure in the patient's RE was 55 mmHg, while he was on oral carbonic anhydrase inhibitor, drops of Xalatan® once daily (latanoprost), and Cosopt® bid (fixed combination of dorzolamide hydrochloride and timolol maleate). The intraocular pressure of the patient's LE was 14 mmHg. The fundus examination of the LE revealed extensive confluent soft drusen at the posterior pole.

The intravenous administration of carbonic anhydrase inhibitor and hyperosmotic agent failed to reduce the intraocular pressure and to alleviate the pain. An emergency sclerotomy with reconstruction of the AC with viscoelastic was performed two days later. Two months later, the eye was painless, hypotonous, and there was detachment, residual subretinal fibrosis, and hemorrhage (Figure 1D). Four months later, the RE proceeded to phthisis bulbi (Figure 1E).

Five months after the injection, the patient complained of mild pain, photophobia, and visual acuity deterioration in his fellow eye. On presentation his best-corrected visual acuity in the LE was 1/20, and the fundus examination revealed extensive confluent drusen at the posterior pole with edema of the optic disc and flare and cells in the vitreous. A fundus photograph (Figure 2A) and fluorescein angiography were inconclusive due to dense cataract (Figures 2B, 2C). The diagnosis of sympathetic ophthalmia was suggested. Since the patient had a subtotal gastrectomy

for uncontrollable bleeding from peptic ulcer 15 years ago, activated by an excessive salicylates intake, we opted for only topical and parabulbar steroids. Ten days later, the patient experienced significant visual improvement. Three months later, his best-corrected visual acuity in the left eye was 2/10 while he still was under treatment.

Finally the patient overcame his fears and let us to proceed with intravitreal injections of triamcinolone acetonide every three months with a good response^{6,7} complicated by an elevation of intraocular pressure, which we managed with an Ahmet valve implantation. Now, 11 months later, his best corrected vision is 1/10.

Discussion

Systemic administration of bevacizumab causes serious and, in some cases, fatal adverse reactions. Hemoptysis has occurred in patients with non-small cell lung cancer treated with chemotherapy combined with Avastin®.⁸ In a small study, the incidence of serious or fatal hemoptysis was 31% in patients with squamous histology and 4% in patients with adenocarcinoma receiving Avastin® compared to cases treated with chemotherapy alone. It is advised that patients with a history of recent hemoptysis should not receive Avastin®.⁸

When data were pooled from two randomized phase II studies utilizing bevacizumab with 5-FU/leucovorin, and

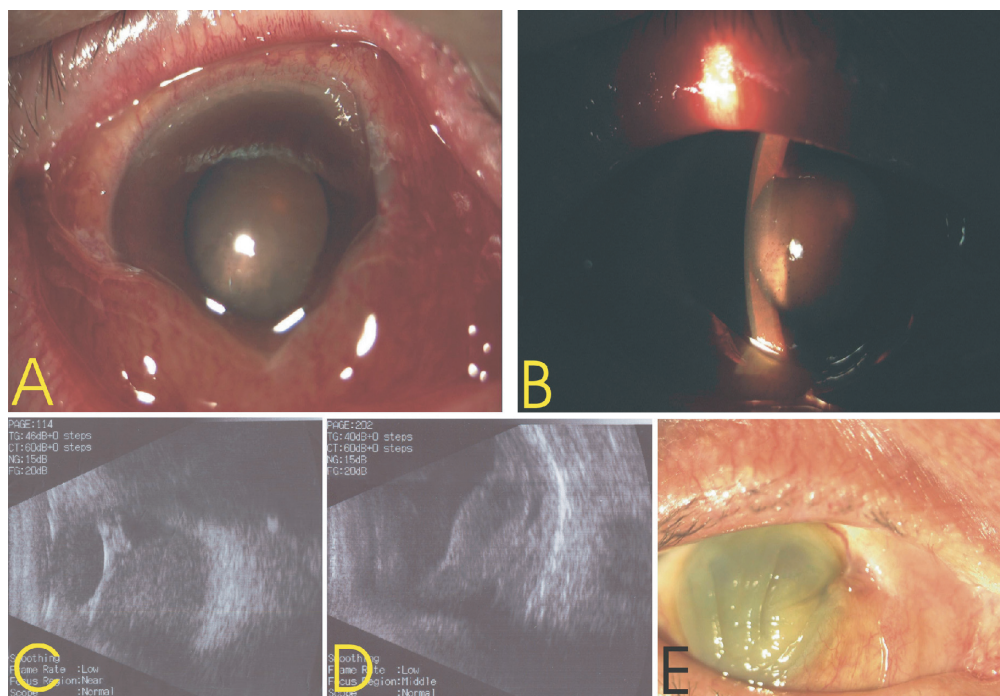


Figure 1 A) Right eye on presentation. The conjunctiva was congestive, the cornea edematous, and the anterior chamber collapsed. B) Extensive choroidal detachment was evident in close contact with the lens. C) Extensive choroidal detachment revealed by a B-scan image. D) B-scan image two months later. E) Four months later, right eye phthisis bulbi.

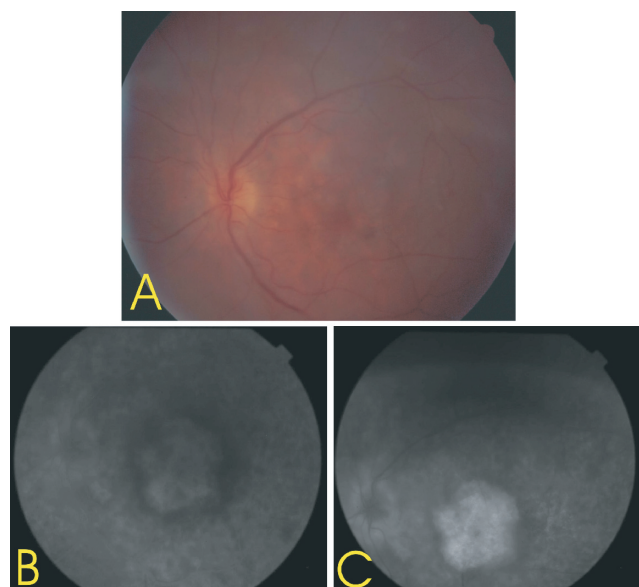


Figure 2 Dense cataract obscures details. **A)** Color fundus photograph of the left eye five months after the intravitreal injection of Avastin® in the right eye. **B, C)** Fluorescein angiography five months after the intravitreal injection of Avastin® in the right eye.

also in a third treatment arm of bevacizumab/5-FU/LV of a randomized phase III study, a few toxicities were uniformly encountered in all of the above studies.⁹ The reported toxicities were grade 3 (medically manageable) hypertension (3%–16%), hemorrhage (2%–9.3%), gastrointestinal perforation (1.5%), arterial thromboembolism (3.8%), wound-healing problems (1%–2%), and proteinuria (1%–2%).⁹

The reported ocular complications of intravitreal injection for ARMD so far, are tears of retinal pigment epithelium^{10–13} and complications related to the injection site mainly, as conjunctival hyperemia and subconjunctival hemorrhage.¹⁴

Our case demonstrates a serious ocular complication initiated ten days after intravitreal administration of Avastin® in a patient with exudative AMD.

Disclosure

The authors report no conflicts of interest in this work.

References

1. Rosenfeld PJ, Moshfeghi AA, Puliafito CA. Optical coherence tomography findings after intravitreal injection of bevacizumab (Avastin) for neovascular age-related macular degeneration. *Ophthalmic Surg Lasers Imaging*. 2005;36:331–335.
2. Avery RL, Pieramici D, Rabena M, et al. Intravitreal bevacizumab (Avastin) for neovascular age-related macular degeneration. *Ophthalmology*. 2006;113:363–372.
3. Spaide R, Laud K, Fine H, et al. Treatment of choroidal neovascularization secondary to age-related macular degeneration. *Retina*. 2006;26:383–390.
4. Avery R. Regression of retinal and iris neovascularization after intravitreal bevacizumab (Avastin) treatment. *Retina*. 2006;26:352–353.
5. Davidorf F, Mouser G, Derick R. Rapid improvement of rubeosis iridis from a single Bevacizumab (Avastin) injection. *Retina*. 2006;26:354–356.
6. Ozdemir H, Karacorlu M, Karacorlu S. Intravitreal triamcinolone acetonide for treatment of sympathetic ophthalmia. *Graefes Arch Clin Exp Ophthalmol*. 2005;243:734–736.
7. Jonas JB, Spandau UH. Repeated Intravitreal triamcinolone acetonide for chronic sympathetic ophthalmia. *Acta Ophthalmol Scand*. 2006;84:436.
8. Johnson DH, Fehrenbacher L, Novotny WF, et al. Randomized phase II trial comparing bevacizumab plus carboplatin and paclitaxel with carboplatin and paclitaxel alone in previously untreated locally advanced or metastatic non-small-cell lung cancer. *J Clin Oncol*. 2004;22:2184–2191.
9. Saif MW, Mehra R. Incidence and management of bevacizumab-related toxicities in colorectal cancer. *Expert Opin Drug Saf*. 2006;5:553–566.
10. Nicolò M, Ghiglione D, Calabria G. Retinal pigment epithelial tear following intravitreal injection of bevacizumab (Avastin). *Eur J Ophthalmol*. 2006;16:770–773.
11. Shah CP, Hsu J, Garg SJ, Fischer DH, Kaiser R. Retinal pigment epithelial tear after intravitreal bevacizumab injection. *Am J Ophthalmol*. 2006;142:1070–1072.
12. Kook D, Wolf A, Neubauer AS, et al. Retinal pigment epithelial tears after intravitreal injection of bevacizumab for AMD. Frequency and progress. *Ophthalmologie*. 2008;105:158–164.
13. Garg S, Brod R, Kim D, Lane RG, Maguire J, Fischer D. Retinal pigment epithelial tears after intravitreal bevacizumab injection for exudative macular degeneration. *Clin Experiment Ophthalmol*. 2008;36:252–256.
14. Costa RA, Jorge R, Calucci D, Cardillo JA, Melo LA, Scott IU. Intravitreal bevacizumab for choroidal neovascularization caused by AMD (IBeNA Study): results of a phase 1 dose-escalation study. *Invest Ophthalmol Vis Sci*. 2006;47:4569–4578.

Clinical Ophthalmology

Publish your work in this journal

Clinical Ophthalmology is an international, peer-reviewed journal covering all subspecialties within ophthalmology. Key topics include: Optometry; Visual science; Pharmacology and drug therapy in eye diseases; Basic Sciences; Primary and Secondary eye care; Patient Safety and Quality of Care Improvements. This journal is indexed on

Submit your manuscript here: <http://www.dovepress.com/clinical-ophthalmology-journal>

Dovepress

PubMed Central and CAS, and is the official journal of The Society of Clinical Ophthalmology (SCO). The manuscript management system is completely online and includes a very quick and fair peer-review system, which is all easy to use. Visit <http://www.dovepress.com/testimonials.php> to read real quotes from published authors.