

Profile of glycopyrronium for once-daily treatment of moderate-to-severe COPD

Roland Buhl¹
Donald Banerji²

¹Pulmonary Department, Mainz University Hospital, Mainz, Germany; ²Novartis Pharmaceuticals Corporation, East Hanover, NJ, USA

Abstract: Bronchodilators are central in the symptomatic management of chronic obstructive pulmonary disease (COPD). Long-acting muscarinic antagonists (LAMAs) and long-acting β_2 -agonists (LABAs) are the main classes of long-acting bronchodilators. To date, tiotropium is the only once-daily LAMA available for the treatment of COPD. Glycopyrronium is a novel LAMA, currently in development for COPD. Phase II studies have shown that glycopyrronium 50 μg once daily provides clinically significant 24-hour bronchodilation with a rapid onset of action, which is faster than that of tiotropium, and a favorable safety and tolerability profile. The Phase III GLycopyrronium bromide in COPD airWays (GLOW) program has now confirmed the long-term efficacy and tolerability of glycopyrronium 50 μg once daily. The three studies included in this program have further shown that the effect of glycopyrronium versus placebo is similar to that of tiotropium in reducing dyspnea and the risk of exacerbations, as well as improving lung function, exercise tolerance, and health status in patients with COPD. The safety profile of glycopyrronium is also similar to that of tiotropium in terms of overall incidence of adverse events and muscarinic side effects. Glycopyrronium could be an alternative choice to tiotropium, and like tiotropium, has the potential to be used as a monotherapy or combination therapy. Phase II studies have shown that a fixed-dose combination of glycopyrronium and the 24-hour LABA indacaterol, produces rapid and sustained bronchodilation compared with indacaterol monotherapy in patients with COPD. Phase III studies are currently ongoing to assess the long-term efficacy and safety of this combination.

Keywords: NVA237, glycopyrronium, chronic obstructive pulmonary disease, once daily, muscarinic antagonist

Introduction

Chronic obstructive pulmonary disease (COPD) is a preventable and treatable lung disease characterized by progressive airflow limitation.¹ It is a leading cause of mortality and morbidity worldwide, and represents a significant social and economic burden.¹ Characteristic symptoms of COPD, such as progressive dyspnea, cough, and sputum production, have a considerable impact on patient quality of life. Patients with COPD indicate the morning as the time when symptoms are more severe. In particular, shortness of breath is more frequent in the morning and severely restricts essential morning activities.²⁻⁴ Patients with severe to very severe airflow limitation have a greater range of symptoms and a higher burden of progressive disease compared with patients with more moderate disease.^{1,5}

Correspondence: Roland Buhl
Pulmonary Department, Mainz University Hospital, Langenbeckstrasse 1,
Mainz, D-55131, Germany
Tel +49 6131 177 270
Fax +49 6131 175 545
Email r.buhl@3-med.klinik.uni-mainz.de

According to the Global Initiative for Obstructive Lung Disease (GOLD) 2011 strategy, the aim of pharmacologic management of COPD remains the relief of symptoms (especially dyspnea), reduction in the frequency and severity of exacerbations, and improvement of health status and exercise tolerance.¹ In addition, this new strategy recommends that the management of stable COPD should no longer be based solely on spirometric categories, but should include the impact of the disease on patients (determined by symptom burden and activity limitation) and risk of future events (especially exacerbations).¹ This revised recommendation reflects the approach used in multidimensional grading systems, such as the BODE index which includes the body mass index (B), degree of airflow obstruction (O), measured by the forced expiratory volume in one second (FEV₁), dyspnea (D), and exercise capacity (E) as predictors of COPD-related hospitalization and mortality.⁶

Bronchodilators are the cornerstone of pharmacologic therapy for COPD.¹ Long-acting inhaled bronchodilators are more convenient and more effective at sustaining symptomatic relief than short-acting bronchodilators.^{1,7,8} Furthermore, longer-acting inhaled therapies improve patient compliance, as less frequent dosing may improve adherence.⁹⁻¹¹ The

GOLD 2011 strategy recommends long-acting bronchodilator therapy as a first choice in groups B, C, and D (low-risk more symptoms, high-risk fewer symptoms, and high-risk more symptoms, respectively) and a second choice (after rescue medication use) in group A (low risk less symptoms, Figure 1).¹

Two classes of long-acting bronchodilators are available: long-acting β_2 -agonists (LABAs) and long-acting muscarinic antagonists (LAMAs). Currently, the only once-daily LAMA approved for maintenance therapy in COPD is tiotropium (Spiriva[®], Boehringer Ingelheim Pharmaceuticals Inc, Ridgefield, CT); however, the once-daily Seebri[®] Breezhaler[®] (glycopyrronium, in development as NVA237, Novartis Pharma AG, Basel, Switzerland) was filed for approval in the European Union¹² and in Japan¹³ in 2011. Aclidinium bromide, a novel, twice-daily LAMA has recently been approved in the European Union and the US for the treatment of COPD.^{14,15} This review will focus on the novel LAMA glycopyrronium, and aims to provide pharmacokinetic and clinical evidence (focusing on data from Phase III studies) showing that this treatment will be a useful future addition to current pharmacologic strategies for COPD. Furthermore, clinical evidence will be considered in line with GOLD 2011 recommendations.

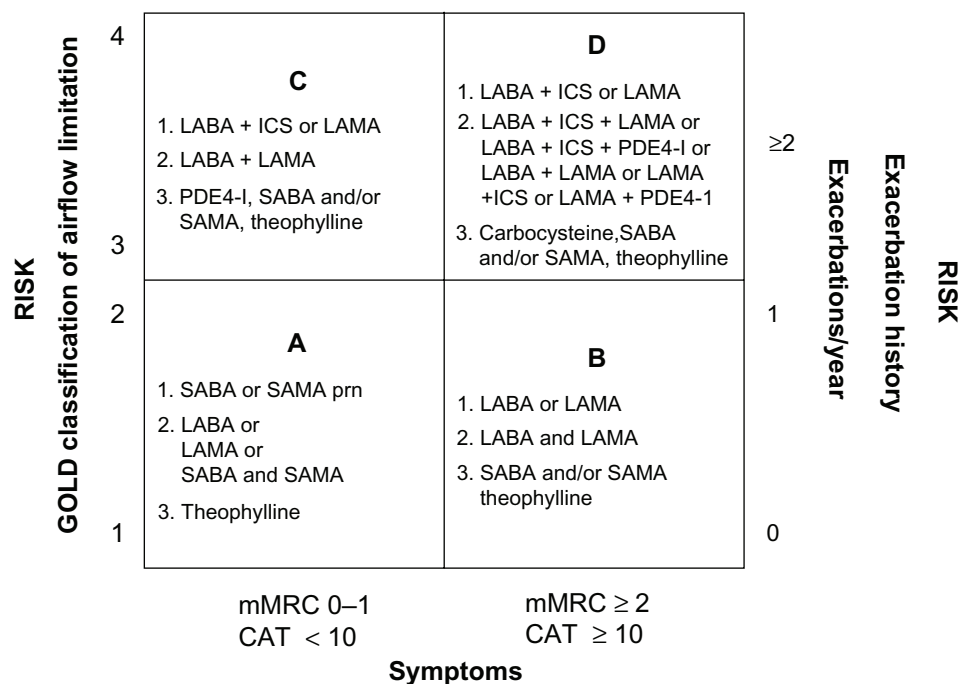


Figure 1 GOLD 2011 pharmacologic management of COPD based on combined assessment of airflow limitation, symptoms and exacerbations.

Note: Alternative choice medications can be used alone or in combination with other options in the first or second choices.

Adapted from Global Initiative for Obstructive Lung Disease. Global strategy for the diagnosis, management and prevention of chronic obstructive pulmonary disease. GOLD; 2011.¹

Abbreviations: GOLD, Global Initiative for Obstructive Lung Disease; COPD, chronic obstructive pulmonary disease; LABA, long-acting β_2 -agonist; ICS, inhaled corticosteroid; LAMA, long-acting muscarinic antagonist; PDE4-inh, phosphodiesterase-4 inhibitor; SABA, short-acting β_2 -agonist; SAMA, short-acting muscarinic antagonist; prn, pro re nata (as needed); mMRC, modified Medical Research Council; CAT, COPD Assessment Test.

Pharmacology and pharmacokinetics

Glycopyrronium has a quaternary ammonium structure.¹⁶ This minimizes its oral bioavailability, which should reduce systemic effects from any swallowed portion of the dose.¹⁷

Mechanism and onset of action

Bronchoconstriction is caused by the action of acetylcholine (ACh) on muscarinic receptors. Muscarinic type-1 (M_1) receptors on postganglionic nerves bind ACh released from preganglionic nerves, stimulating ACh release from postganglionic terminals. This binds to M_3 receptors in the airways smooth muscle, stimulating bronchoconstriction (Figure 2).¹⁶

As with other LAMAs, the bronchodilator effect of glycopyrronium results from blockade of M_1 and M_3 receptors. A third type of receptor, the presynaptic inhibitory M_2 receptor, is present not only in many different types of smooth muscle, where its function is not yet known,¹⁸ but also on postganglionic nerves. In addition, these receptors are found in the heart and modulate pacemaker activity, atrioventricular conduction, and contractile force.^{17,19} Therefore, all LAMAs carry the risk of cardiovascular effects, such as tachycardia and arrhythmia. In preclinical studies, glycopyrronium showed a high degree of selectivity for M_3 over M_2 receptors and, compared with tiotropium, showed fewer systemic cardiovascular events.^{16,20,21}

As the binding of acetylcholine to muscarinic receptors triggers an increase in intracellular calcium, the onset of action of muscarinic antagonists can be measured using a cell-based in vitro calcium assay.²² Studies using this assay have shown that glycopyrronium has a rapid onset of action,

with a half-life ($t_{1/2}$) of 6.1 ± 2.1 minutes for inhibition of methacholine-induced calcium release, which is approximately five times faster than that of tiotropium ($t_{1/2}$ of inhibition 29.4 ± 4.2 minutes).²³

Drug delivery via Breezhaler® device

Glycopyrronium is delivered by the Breezhaler® device, a low-resistance, single-dose dry-powder inhaler suitable for use by patients of all ages with COPD and a wide range of disease severity.^{24,25} Studies with the Breezhaler® device have shown that it delivers a consistent dose of drug, irrespective of disease severity and patient age, with no reported device failures.^{24,25} The Breezhaler® device has a lower internal resistance than the Handihaler® device used to deliver tiotropium (specific airflow resistances of 2.2 and 5.1×10^{-2} kPa $_{1/2}$ L $^{-1}$ minute, respectively).²⁴ The internal resistance of the inhaler determines the effort patients have to make to achieve adequate inspiratory flows for effective and reproducible dose delivery.^{26,27} Low-resistance devices require less effort by the patients to generate adequate inspiratory flows than high-resistance devices, and are therefore more suitable for older patients and for those with severe COPD who may experience difficulties in generating these flows.

Clinical efficacy

A 50 μ g dose glycopyrronium (50 μ g refers to the quantity of the glycopyrronium moiety present in the capsule, which corresponds to a delivered dose of 44 μ g) once daily in the morning provided significant bronchodilation over the course of the day, and was well tolerated in patients with moderate-to-severe COPD, as demonstrated in Phase II clinical studies.^{28–31} The Phase III GLycopyrronium bromide in COPD

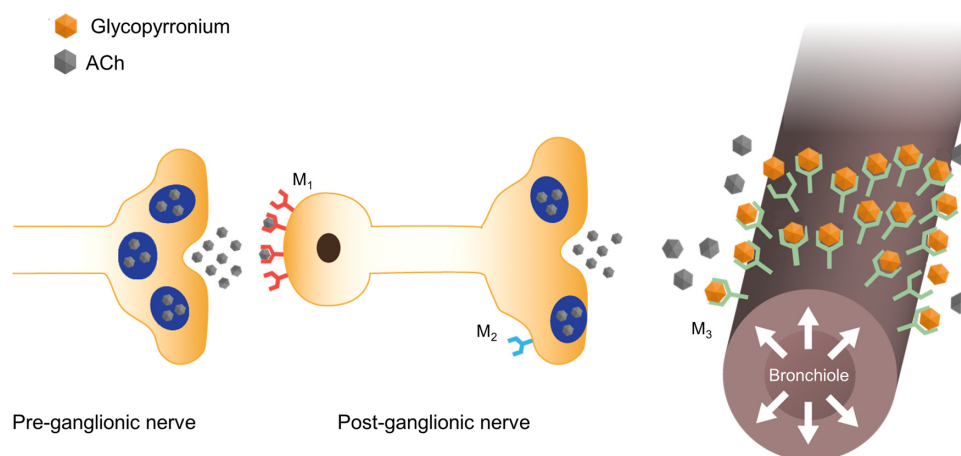


Figure 2 Glycopyrronium induces bronchodilation by inhibiting parasympathetically mediated bronchoconstriction.
Abbreviations: M, muscarinic receptor; ACh, acetylcholine.

airWays (GLOW) program further evaluated the efficacy and safety of glycopyrronium 50 µg once daily in patients with moderate-to-severe COPD.^{32–34} GLOW1 evaluated the efficacy, safety, and tolerability of glycopyrronium 50 µg once daily compared with placebo over 26 weeks in 822 patients.³² GLOW2 evaluated the efficacy and safety of glycopyrronium 50 µg once daily compared with placebo and open-label tiotropium 18 µg once daily (as an active comparator) over 52 weeks in 1066 patients.³³ In both studies, outcomes measured included FEV₁, dyspnea measured on the transition dyspnea index (TDI), health-related quality of life as assessed by the St George's Respiratory Questionnaire (SGRQ), time to first moderate or severe COPD exacerbation, and mean daily rescue medication use over study duration. In the GLOW2 study, tiotropium was evaluated versus placebo as well as glycopyrronium for all endpoints, but the study was not powered to show the statistical superiority of glycopyrronium over tiotropium.³³ GLOW3 assessed the effects of glycopyrronium 50 µg once daily versus placebo on exercise tolerance.³⁴ Exercise tolerance was measured as exercise endurance time during a submaximal exercise tolerance test. Other key outcomes included spirometrically measured inspiratory capacity (IC) at isotime (the last matching time point at which the patient had a test result for both treatment periods) and exertional dyspnea (Borg CR10 scale). In all the studies in the GLOW program, safety was assessed by recording of treatment-emergent adverse events, monitoring of vital signs, and laboratory analyses.

Lung function

Trough FEV₁ at Week 12 (primary endpoint) was significantly higher in patients receiving glycopyrronium compared with patients receiving placebo in both GLOW1 and GLOW2 (Figure 3A and B), with least squares means (LSM) treatment differences versus placebo of 108 mL and 97 mL ($P < 0.001$ for both).^{32,33} In the GLOW2 study, the efficacy of glycopyrronium versus placebo was similar to that of tiotropium (83 mL versus placebo; $P < 0.001$, Figure 3B).³³ This improved bronchodilation was sustained until the end of the study in both GLOW1 and GLOW2 (Figure 3A and B).^{32,33}

In GLOW1, glycopyrronium provided rapid bronchodilation, with a difference in mean FEV₁ of 93 mL at 5 minutes and 144 mL at 15 minutes versus placebo, following the first dose on Day 1 ($P < 0.001$). On day 1 in the GLOW2 study, the mean FEV₁ treatment difference for glycopyrronium versus placebo was 87 mL at 5 minutes and 143 mL at 15 minutes, while the difference for tiotropium versus

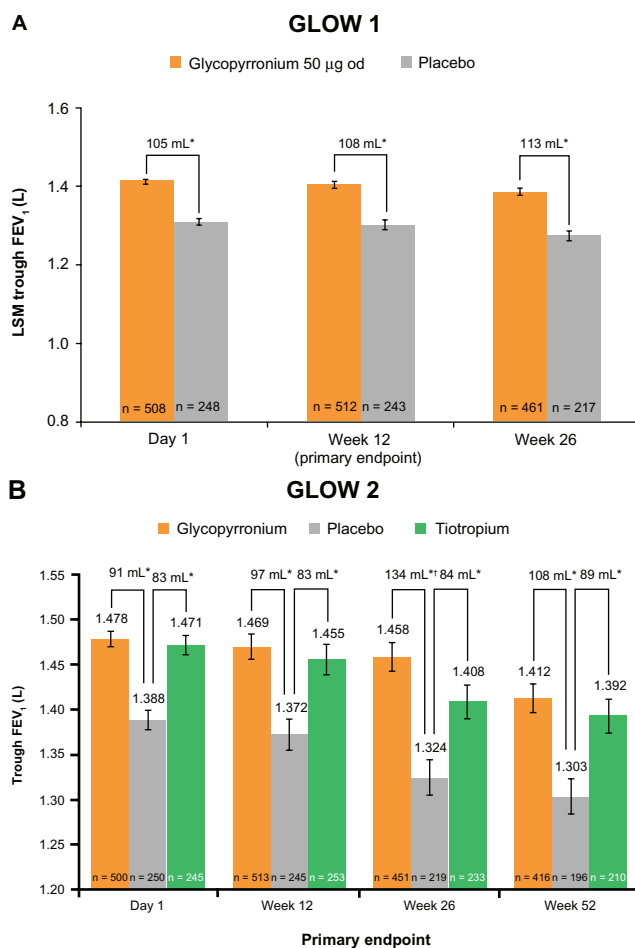


Figure 3 Glycopyrronium steady-state improvement in trough FEV₁ achieved on day 1 and sustained until (A) week 26 (GLOW1) and (B) week 52 (GLOW2). Adapted from D'Urzo A, Ferguson GT, van Noord JA, et al. Efficacy and safety of once-daily NVA237 in patients with moderate-to-severe COPD: the GLOW1 trial. *Respir Res.* 2011;12:156³² and Kerwin E, Hébert J, Korenblat P, et al. Efficacy and safety of NVA237 versus placebo and tiotropium in patients with moderate-to-severe COPD over 52 weeks: The GLOW2 study. *Eur Respir J.* July 26, 2012.³³
Notes: Data are LSM ± SE; * $P < 0.001$ versus placebo; † $P = 0.007$ versus tiotropium.
Abbreviations: FEV₁, forced expiratory volume in one second; GLOW, Glycopyrronium bromide in COPD airWays; LSM, least squares means; SE, standard error; od, once daily.

placebo was 45 mL at 5 minutes and 78 mL at 15 minutes (all $P < 0.001$; Figure 4).³³ Essentially, glycopyrronium provided rapid bronchodilation following the first dose on Day 1, with significantly higher FEV₁ from 5 minutes to 4 hours post-dose compared with placebo ($P < 0.001$) and tiotropium ($P < 0.01$; Figure 4).³³

Dyspnea and health status

In GLOW1, glycopyrronium significantly improved the TDI focal score at Week 26, with a treatment difference of 1.04 ($P < 0.001$),³² which exceeded the one-point treatment difference considered as clinically important (Figure 5A).³⁴ The percentage of patients achieving a clinically significant improvement in TDI focal score was 61.3% for

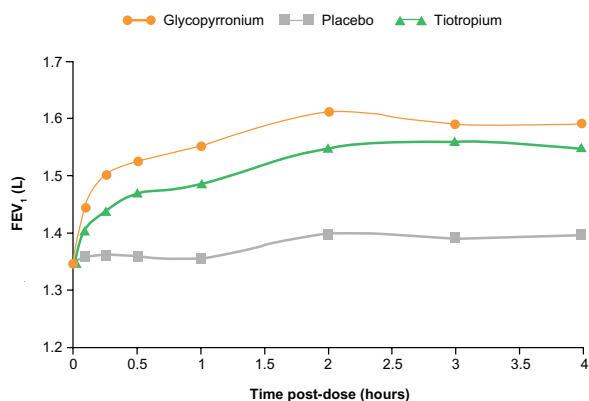


Figure 4 FEV₁ at each time point up to 4 hours post-dose on day 1 in GLOW2. Reprinted from Kerwin E, Hébert J, Korenblat P, et al. Efficacy and safety of NVA237 versus placebo and tiotropium in patients with moderate-to-severe COPD over 52 weeks: The GLOW2 study. *Eur Respir J.* July 26, 2012.³³

Notes: Data are LSM; $P < 0.001$ for glycopyrronium and tiotropium versus placebo at all time points from 5 minutes to 4 hours; $P < 0.01$ for glycopyrronium versus tiotropium at all time points from 5 minutes to 4 hours.

Abbreviations: FEV₁, forced expiratory volume in one second; GLOW, Glycopyrronium bromide in COPD airWays; LSM, least squares means.

glycopyrronium and 48.3% for placebo (Figure 5B). Thus, a clinically meaningful improvement in TDI focal score was 1.7-fold more likely for glycopyrronium compared with placebo (odds ratio [OR] 1.74, 95% confidence interval [CI]

1.25–2.42; $P = 0.001$, Figure 5B).³² In GLOW2, glycopyrronium and tiotropium significantly improved TDI focal scores compared with placebo at Week 26 (Figure 6A), with treatment differences of 0.81 and 0.94 ($P = 0.002$ for both active treatments).³³ The percentage of patients achieving a clinically meaningful improvement in TDI score was significantly higher with glycopyrronium and tiotropium compared with placebo (Figure 6B). For glycopyrronium, the OR was 1.58 with 95% CI 1.12–2.45 ($P = 0.001$) and for tiotropium the OR was 1.54 with 95% CI 1.04–2.30 ($P = 0.032$).³³

In GLOW1, the total SGRQ score was significantly better (lower) in patients receiving glycopyrronium compared with placebo ($P = 0.004$) at Week 26 (Figure 5C), with a treatment difference of –2.81, which was statistically significant, but not clinically meaningful (≥ 4 -point reduction).³⁵ However, a significantly higher percentage of patients achieved a clinically meaningful improvement in SGRQ with glycopyrronium compared with placebo (OR 1.58, 95% CI 1.14–2.20; $P = 0.006$, Figure 5D).³² At Week 52 in GLOW2, the total SGRQ score was significantly improved in patients receiving glycopyrronium and tiotropium versus

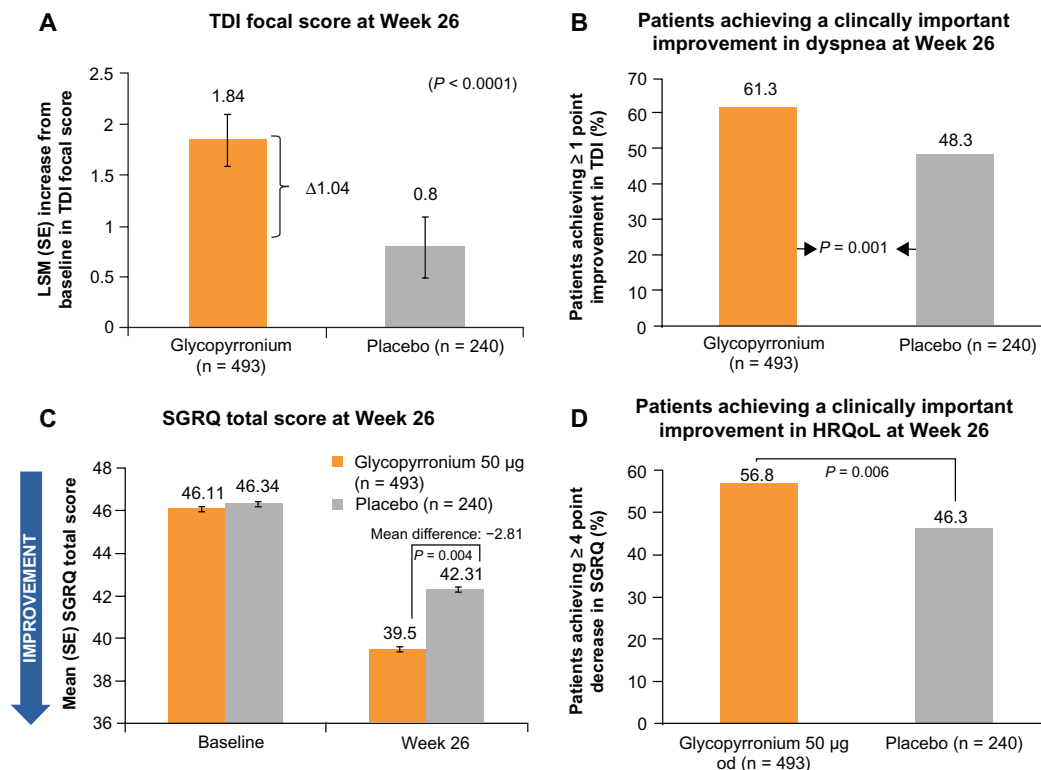


Figure 5 Improvements in (A and B) dyspnea and (C and D) health-related quality of life with glycopyrronium versus placebo in GLOW1.

Reprinted from D'Urzo A, Ferguson GT, van Noord JA, et al. Efficacy and safety of once-daily NVA237 in patients with moderate-to-severe COPD: the GLOW1 trial. *Respir Res.* 2011;12:156.³²

Note: Data are LSM ± SE.

Abbreviations: HRQoL, health-related quality of life; GLOW, Glycopyrronium bromide in COPD airWays; LSM, least squares means; SE, standard error; TDI, Transition Dyspnea Index; MCID, minimal clinically important differences; OR, odds ratio; CI, confidence interval; SGRQ, St George's Respiratory Questionnaire.

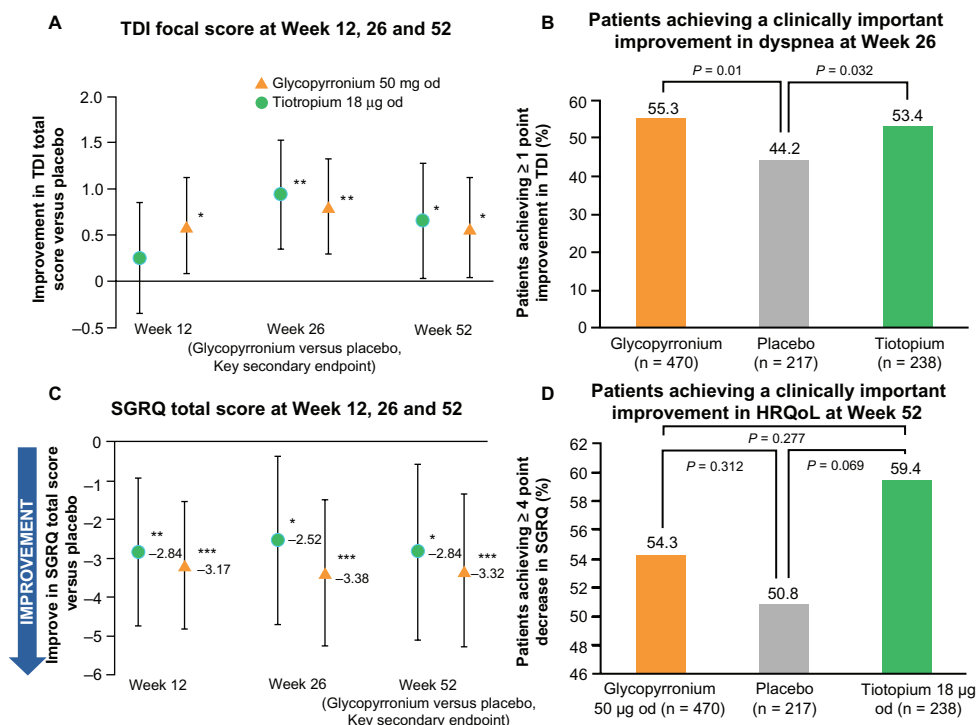


Figure 6 Improvements in (A and B) dyspnea and (C and D) health-related quality of life with glycopyrronium versus placebo in GLOW2. Reprinted from Kerwin E, Hébert J, Korenblat P, et al. Efficacy and safety of NVA237 versus placebo and tiotropium in patients with moderate-to-severe COPD over 52 weeks: The GLOW2 study. *Eur Respir J.* July 26, 2012.³³

Notes: Data are LSM ± 95% CI. **P* < 0.05; ***P* < 0.01; ****P* < 0.001 versus placebo.

Abbreviations: HRQoL, health-related quality of life; GLOW, GLycopyrronium bromide in COPD airWays; LSM, least squares means; CI, confidence interval; TDI, Transition Dyspnea Index; od, once daily; OR, odds ratio; SGRQ, St George’s Respiratory Questionnaire.

placebo, with treatment differences of -3.32 (*P* < 0.001) and -2.84 (*P* = 0.014, Figure 6C).³³ A numerically higher proportion of patients receiving glycopyrronium or tiotropium achieved clinically meaningful improvements in SGRQ compared with placebo (Figure 6D).³³

Exacerbations and rescue medication

Glycopyrronium significantly prolonged the time to first moderate or severe exacerbation by 31% and 34% compared

with placebo over 26 weeks (GLOW1; *P* = 0.023) and 52 weeks (GLOW2; *P* < 0.001; Table 1).^{32,33} Furthermore, in the GLOW2 study, glycopyrronium demonstrated similar results to tiotropium, providing a 39% risk reduction versus placebo (Table 1 and Figure 7).³³

During the 26-week GLOW1 study, treatment with glycopyrronium resulted in a significant reduction in the risk of severe COPD exacerbations leading to hospitalization (hazard ratio 0.35, 95% CI 0.141–0.857; *P* = 0.022), percentage of

Table 1 Effect of active drug versus placebo on moderate to severe exacerbations and rescue medication use outcomes over 26 weeks (GLOW1) and 52 weeks (GLOW2). Adapted from D’Urzo A, Ferguson GT, van Noord JA, et al. Efficacy and safety of once-daily NVA237 in patients with moderate-to-severe COPD: the GLOW1 trial. *Respir Res.* 2011;12:15632 and Kerwin E, Hébert J, Korenblat P, et al. Efficacy and safety of NVA237 versus placebo and tiotropium in patients with moderate-to-severe COPD over 52 weeks: The GLOW2 study. *Eur Respir J.* July 26, 2012.³³

Ratios for active drug versus placebo	Glycopyrronium 50 µg od		Tiotropium 18 µg od
	GLOW1 26 weeks	GLOW2 52 weeks	GLOW2 52 weeks
Time to first exacerbation, HR (95% CI)	0.69* (0.50–0.95)	0.66*** (0.520–0.850)	0.61** (0.456–0.821)
Rate of exacerbations	0.72	0.66** (0.496–0.869)	0.80 (0.586–1.105)
Change from baseline in mean daily number of puffs of rescue medication, LSM ± SE	-0.46** (±0.164)	-0.37* (±0.181)	-0.63** (±0.209)

Notes: **P* ≤ 0.05; ***P* ≤ 0.01; ****P* ≤ 0.001.

Abbreviations: GLOW, GLycopyrronium bromide in COPD airWays; od, once daily; HR, hazard ratio; CI, confidence interval; LSM, least squares means; SE, standard error.

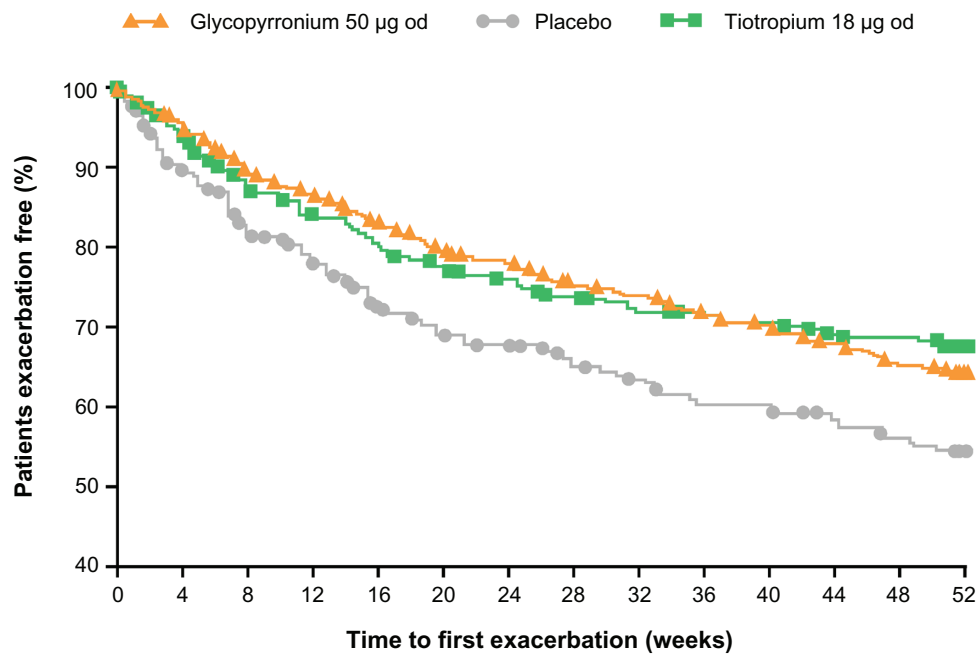


Figure 7 Glycopyrronium and tiotropium prolong time to first moderate to severe COPD exacerbation compared with placebo over 52 weeks in GLOW2. Reprinted from Kerwin E, Hébert J, Korenblat P, et al. Efficacy and safety of NVA237 versus placebo and tiotropium in patients with moderate-to-severe COPD over 52 weeks: The GLOW2 study. *Eur Respir J*. July 26, 2012.³³

Notes: Glycopyrronium 50 µg once daily versus placebo: hazard ratio 0.66, 95% confidence interval [CI] 0.520–0.850; $P = 0.001$; tiotropium versus placebo 18 µg once daily: hazard ratio 0.61, 95% CI 0.456–0.821; $P = 0.001$.

Abbreviations: COPD, chronic obstructive pulmonary disease; GLOW, Glycopyrronium bromide in COPD airWays; od, once daily.

hospitalizations due to COPD exacerbations (1.7% versus 4.2%, OR 0.34, 95% CI 0.129–0.868; $P = 0.024$), and a numerical reduction in the rate of moderate or severe exacerbations versus placebo (0.43 versus 0.59/year; rate ratio 0.72; $P = 0.071$).³² During the 52 weeks of the GLOW2 study, glycopyrronium and tiotropium were comparable and were both superior to placebo in reducing moderate or severe exacerbations needing systemic corticosteroids (glycopyrronium/placebo OR 0.61, 95% CI 0.434–0.870; $P = 0.006$; tiotropium/placebo OR 0.62, 95% CI 0.413–0.930; $P = 0.021$) and exacerbations requiring treatment with antibiotics (glycopyrronium/placebo OR 0.69, 95% CI 0.495–0.957; $P = 0.026$; tiotropium/placebo OR 0.65, 95% CI 0.438–0.949; $P = 0.026$).³³ In both GLOW1 and GLOW2, the use of daily rescue medication was significantly lower in patients receiving glycopyrronium compared with placebo (Table 1).^{32,33}

Exercise endurance and exertional dyspnea

As demonstrated in the GLOW3 study after 3 weeks of treatment, glycopyrronium was significantly superior to placebo with respect to patients' exercise endurance time; the LSM difference at Day 21 between treatment arms was 88.93 seconds ($P < 0.001$) corresponding to an approximately 21% difference (Figure 8A).³⁶

Dynamic hyperinflation is an important factor which limits exercise capacity in COPD, and results in a reduction of IC during exercise.^{37,38} Glycopyrronium produced a statistically significant increase in IC at isotime on Day 1 and Day 21 versus placebo (treatment difference of 230 mL and 200 mL, respectively; both $P < 0.001$), therefore reducing lung hyperinflation. A significantly greater improvement in IC was also seen in the long-term GLOW1 and GLOW2 studies.

Glycopyrronium was found to be superior to placebo for exertional dyspnea on Day 1 and Day 21 at isotime (Figure 8B).³⁶ On Day 1, the modified Borg dyspnea score improved by 13% with glycopyrronium versus placebo (treatment difference -0.92 ; $P < 0.05$), while on Day 21 the score improved by 20% (treatment difference -1.16 ; $P < 0.05$, Figure 8C).³⁶

COPD symptoms collected via diary data

In the GLOW1 and GLOW2 studies, all patients were provided with an electronic patient diary to record daily morning and evening clinical symptoms, ie, cough, wheezing, shortness of breath, sputum volume and color, night-time awakenings, and rescue medication (salbutamol/albuterol) use. The diary allowed patients to keep a note of details of any change in symptoms, and any changes in

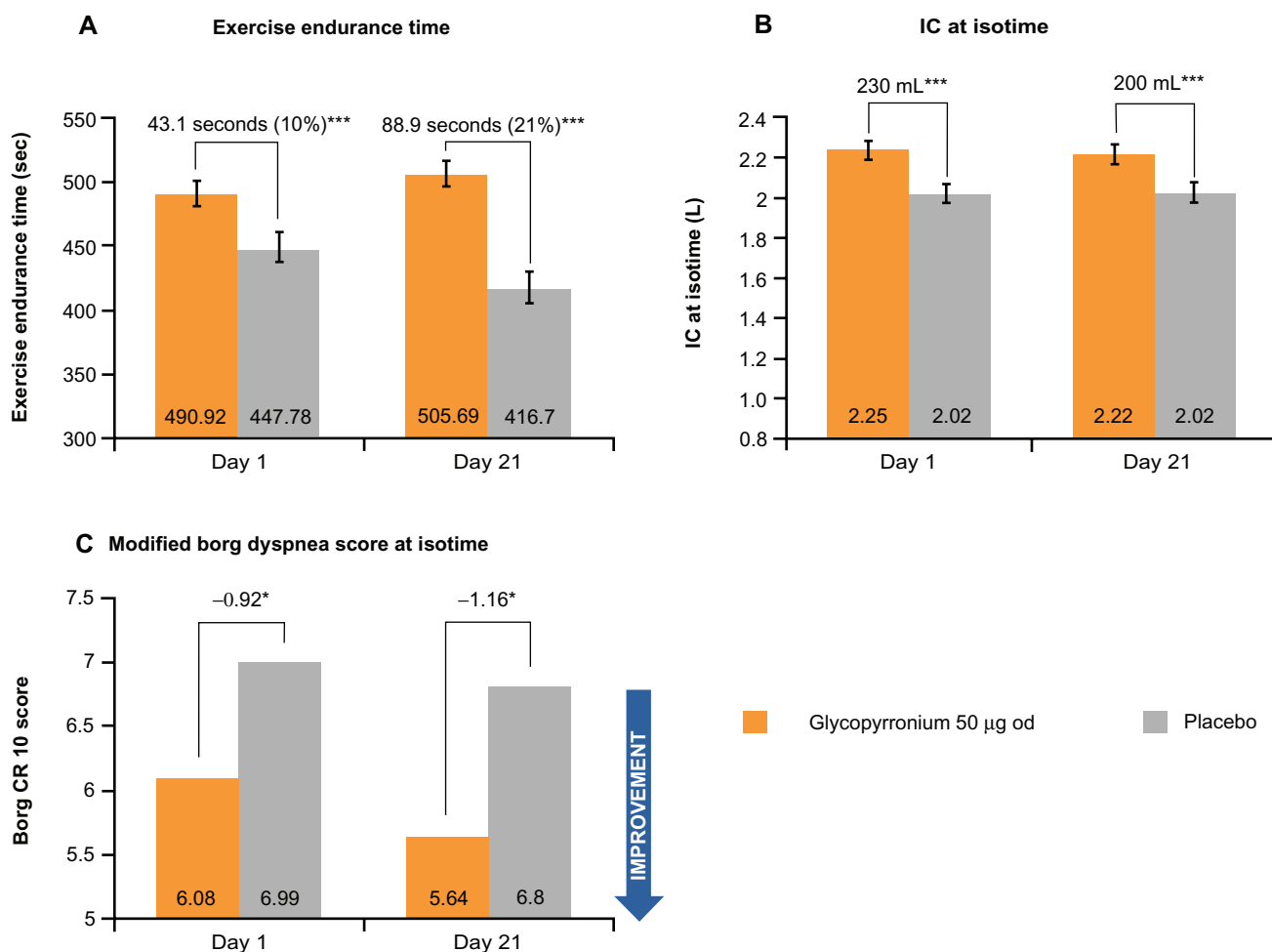


Figure 8 Improvements in (A) exercise tolerance, (B) lung function during exercise, and (C) exertional dyspnea with glycopyrronium versus placebo in GLOW3. Reprinted from Beeh KM, Singh D, Di Scala L, Drollmann A. Once-daily NVA237 improves exercise tolerance from the first dose in patients with COPD: the GLOW3 trial. *Int J Chron Obstruct Pulmon Dis.* 2012;7:503–513.³⁶

Notes: Data are LSM either ± SE or 95% CI. *P < 0.05; ***P < 0.001 versus placebo.

Abbreviations: GLOW, Glycopyrronium bromide in COPD airWays; LSM, least squares means; SE, standard error; CI, confidence interval; IC, inspiratory capacity.

concomitant medication throughout the study. Patients were required to score their symptoms in the diary in the morning (premedication) and the evening, on a scale of 0–3, with 0 representing no symptoms, no night-time awakening due to symptoms, no sputum produced, and no breathlessness or breathlessness only when running, and 3 representing severe

symptoms, symptoms which completely stopped the patient from performing usual daily activities, more than 25 mL of sputum produced, green-colored sputum, and breathlessness at rest. Baseline scores were taken during the run-in period. The daily total symptom score was the sum of the worst of the morning and evening assessment for each symptom,

Table 2 Effect of glycopyrronium on COPD symptoms collected via patient diaries, compared with placebo

Variables	Mean treatment difference glycopyrronium versus placebo		Mean treatment difference tiotropium versus placebo
	GLOW1 (26 weeks)	GLOW2 (52 weeks)	GLOW2 (52 weeks)
Percentage of nights with no night-time awakenings	1.59	5.21*	3.32
Percentage of days with no daytime symptoms	-0.08	2.73*	3.34*
Percentage of days able to perform usual activity	5.13*	1.85	1.91
Change from baseline in mean daily total symptoms	-0.36*	-0.42**	-0.45**

Notes: *P < 0.05; **P < 0.01.

Abbreviations: COPD, chronic obstructive pulmonary disease; GLOW, Glycopyrronium bromide in COPD airWays.

and the daily individual symptom scores were the worst of the morning and evening assessments for the individual symptom.

In the GLOW1 study, the percentage of days when patients were able to perform usual daily activities was significantly greater in the glycopyrronium group compared with the placebo group (mean difference 5.13; $P = 0.013$; Table 2). In the GLOW2 study, the percentage of nights with “no night-time awakenings” and “no daytime symptoms” over the 52-week treatment period was significantly higher than in placebo (mean differences 5.21 and 2.73, $P < 0.05$, respectively; Table 2). In both the GLOW1 and GLOW2 studies, the change from baseline in the mean daily total symptom score was significantly greater in patients in the glycopyrronium group than in those on placebo; in the GLOW2 study, the changes seen with glycopyrronium versus placebo were comparable with those seen with tiotropium.

Safety

The overall data for glycopyrronium support an acceptable safety profile. Pooled data for GLOW1 and GLOW2 demonstrate that glycopyrronium was well tolerated, with a low frequency of cardiac and antimuscarinic side effects which was comparable with that of placebo and tiotropium 18 µg once daily.^{32,33} The incidence of adverse events for glycopyrronium (67%) was comparable with placebo (71%)

and tiotropium (74%), with a higher frequency of COPD worsening (most common adverse event) in the placebo group (Table 3).^{32,33} Serious adverse events occurred with a slightly lower frequency in the glycopyrronium treatment group (11%) compared with placebo (13%) and the tiotropium group (15%, Table 3).^{32,33}

Discontinuations due to adverse events were 10% in the placebo group and 8% in the glycopyrronium and tiotropium groups. Antimuscarinic side effects, such as dry mouth, gastrointestinal disturbances, urinary retention, and urinary tract infections, occurred with a low frequency in the glycopyrronium, placebo, and tiotropium treatment groups.^{32,33}

The percentage of patients with newly occurring or worsening clinically notable QTcF values (QT interval with Fridericia's correction) was low across all treatment groups (Table 3). The number of deaths reported in each group was low and similar across treatments (Table 3), and none were considered to be related to the study medication.^{32,33}

Discussion

Bronchodilators are central to the management of COPD. Because tiotropium is the only once-daily LAMA currently available for patients with COPD, there is a growing need to develop further LAMA treatment options. The new GOLD 2011 strategy recommends the use of LAMA monotherapy as one of the first choice treatments in groups B–D, and as a

Table 3 Most frequent adverse events ($\geq 5\%$ in any treatment group); SAEs occurring in ≥ 5 patients in any treatment group, deaths, discontinuations due to adverse events and electrocardiographic abnormalities; pooled data from GLOW1 and GLOW2. Adapted from D'Urzo A, Ferguson GT, van Noord JA, et al. Efficacy and safety of once-daily NVA237 in patients with moderate-to-severe COPD: the GLOW1 trial. *Respir Res.* 2011;12:156³² and Kerwin E, Hébert J, Korenblat P, et al. Efficacy and safety of NVA237 versus placebo and tiotropium in patients with moderate-to-severe COPD over 52 weeks: The GLOW2 study. *Eur Respir J.* July 26, 2012.³³

	Glycopyrronium 50 µg od (n = 1075)	Placebo (n = 535)	Tiotropium 18 µg od (n = 267)
Patients with adverse events, n (%)	719 (66.8)	379 (70.8)	198 (74.2)
COPD worsening	302 (28.1)	123 (23.0)	90 (33.7)
Upper respiratory tract infection	80 (7.4)	53 (9.9)	30 (11.2)
Nasopharyngitis	75 (7.0)	36 (6.7)	21 (7.9)
Patients with SAEs, n (%)	112 (10.4) ^a	67 (12.5)	41 (15.4) ^a
COPD worsening	19 (3.6)	16 (6.0)	13 (4.9)
Pneumonia	7 (1.3)	7 (2.6)	4 (1.5)
Atrial fibrillation	7 (0.7)	0	0
Upper respiratory tract infection, bacterial	5 (0.5)	5 (0.9)	2 (0.7)
Deaths, n (%)	3 (0.6) ^b	2 (0.7)	2 (0.7)
Discontinuation due to adverse event(s)	42 (8.0)	31 (11.6)	20 (7.5)
Electrocardiographic abnormalities			
Total notable	45 (4.2)	19 (3.6)	14 (5.3)
QTcF > 500 msec	2 (0.2)	2 (0.4)	0
Increase from baseline 30–60 msec	142 (13.2)	60 (11.2)	43 (16.2)
Increase from baseline > 60 msec	7 (0.6)	2 (0.4)	0

Notes: ^aIncludes patients that had events that occurred during the 30-day follow-up period; ^bincludes two patients who died during the 30-day follow-up period.

Abbreviations: SAEs, serious adverse events; GLOW, Glycopyrronium bromide in COPD airWays; od, once-daily; COPD, chronic obstructive pulmonary disease; QTcF, QT interval with Fridericia's correction; msec, milliseconds.

second choice in group A.¹ This highlights the pronounced role of LAMAs in the COPD treatment algorithm and the pressing need for the development of a therapeutic alternative to tiotropium.

An ideal LAMA for the treatment of COPD should improve lung function, exercise tolerance, and health status, provide relief from symptoms, and reduce the risk of exacerbation.³⁹ Data from Phase III clinical trials suggest that glycopyrronium can meet these needs and is as effective as tiotropium, the current gold-standard treatment for COPD. The improvement in lung function provided by glycopyrronium 50 µg once daily was shown to be sustained over long-term study (up to 52 weeks).^{32,33} This is particularly important in chronic conditions, such as COPD.

Improvement in exercise tolerance is an important therapeutic target in COPD.^{1,40} Glycopyrronium 50 µg once daily produced immediate and significant improvement in exercise tolerance from Day 1, which was accompanied by sustained reductions in lung hyperinflation (indicated by sustained and significant improvements in IC at isotime).³⁶ One of the most frequent activity-limiting symptoms in patients with COPD is reported to be breathlessness.⁴¹ Glycopyrronium significantly improved exertional dyspnea and reduced breathlessness as measured by the TDI score.³⁴

One of the most important features of a bronchodilator for the treatment of COPD is a rapid onset of action. Rapid relief from symptoms may provide reassurance of effect and help improve compliance with medication.^{9,42} Furthermore, a rapid onset of action has important implications in COPD, as it provides immediate relief from early morning symptoms, which are considered by patients to be the most problematic.² This results in improvement in the ability to perform morning activities and reduction in the use of rescue medication.² Although tiotropium is effective and generally well tolerated, studies in patients with stable COPD have shown that it has a relatively slow onset of action, taking up to 3 hours to achieve optimal bronchodilation.⁴³ In contrast, the new LAMA glycopyrronium, which is being developed as a once-daily treatment for COPD, has a rapid onset of action. In the GLOW1 and GLOW2 studies, glycopyrronium-treated patients achieved significantly higher bronchodilation within 5 and 15 minutes of receiving the first dose on Day 1 versus placebo and tiotropium.³³ This rapid onset of effect, in conjunction with the sustained 24-hour bronchodilation demonstrated by glycopyrronium throughout the duration of the studies, indicate that it has the potential to have a significant impact on morning routines and daily life activities of patients

with COPD. Moreover, once-daily morning inhalation of glycopyrronium 50 µg was shown to improve dyspnea and health status, and reduce rescue medication use compared with placebo.³³ Significant symptom improvements, captured in the patient diaries, were also seen in patients on glycopyrronium compared with placebo, both in the GLOW1 and GLOW2 studies.

Reducing the risk of exacerbation is an important aspect in the management of COPD; the most recent GOLD guidelines highlight the importance of treating exacerbations effectively and preventing future exacerbations.¹ This is based on the evidence that exacerbation reduces patient health status,^{44,45} and increases the risk of hospitalization and death.^{46,47} Furthermore, the frequency of exacerbations contributes to a long-term decline in lung function.⁴⁸ Glycopyrronium 50 µg once daily was shown to reduce the risk of exacerbation,³³ which should reduce the negative impact of COPD on patients' quality of life.⁴⁶ Notably, the GLOW2 study was not powered to evaluate reductions in the risk of exacerbation, because only <28% of the patients had a baseline history of exacerbations. Therefore, the improvement seen in COPD exacerbations suggests that the beneficial effects of glycopyrronium could apply across a broad COPD population, not just patients with severe COPD or a history of frequent exacerbations.³³

Finally, an ideal LAMA should also have an acceptable safety and tolerability profile. Although generally well tolerated, LAMAs are associated with side effects common to all antimuscarinics, such as dry mouth, gastrointestinal disturbances, and cardiovascular effects.¹⁹ Several studies with tiotropium have shown that dry mouth was the only event that was significantly higher in the treatment group than placebo, while there was no difference between treatment groups for other adverse events.^{43,49,50} Recent clinical evidence for both glycopyrronium and tiotropium has demonstrated a low incidence of antimuscarinic side effects, including cardiac effects.^{32,33,51} In addition to all the characteristics described above, an ideal LAMA should be delivered by a system with low internal resistance to allow effective and reproducible dose delivery.²⁴ This may increase adherence with treatment. Recent studies have shown that older patients and those with moderate-to-severe COPD have difficulty generating sufficient inspiratory flow for correct use of the dry-powder inhalers^{52,53} as inspiratory flow is inversely proportional to inhaler resistance, inhalers with low resistance, such as the Breezhaler[®] device, are suitable for the vast majority of patients with COPD, irrespective of age and symptom severity.²⁴

In summary, once-daily glycopyrronium provided significant improvements in lung function from the first dose, as well as improvements in dyspnea and health status, and reductions in the risk of exacerbations and use of rescue medication compared with placebo,^{32,33} with results similar to those of tiotropium.³³ Glycopyrronium also produced immediate and significant improvement in exercise tolerance³⁴ and had a similar safety profile to tiotropium with no unexpected adverse events.^{32,33} The clinical evidence to date suggests that glycopyrronium could be an alternative choice to tiotropium, which represents the current gold standard for patients with COPD.

The patient population in the Phase III clinical trials for glycopyrronium had moderate to severe COPD, classified as GOLD Stage II and III. The results of the GLOW studies indicate that glycopyrronium is efficacious and safe in patients with moderate COPD, where treatment may be more meaningful, as well as in those with severe disease. Long-acting bronchodilators, including LAMAs, are well represented in the treatment matrix recommended by the GOLD 2011 strategy as first choice in groups B–D, and second choice in symptomatic patients in Group A.

Current guidelines recommend the combined use of LABA and LAMA to maximize bronchodilation if symptoms are not improved by a single agent.¹ Therefore, glycopyrronium could be used as a monotherapy instead of tiotropium or as a combination therapy. The impact of LABA-LAMA combinations on FEV₁ has been established.⁵⁴ There are currently a number of LABA-LAMA fixed-dose combinations in development for COPD, including QVA149, an inhaled dual bronchodilator containing a fixed-dose combination of glycopyrronium and another 24-hour agent, the LABA indacaterol (Onbrez[®] Breezhaler, Novartis Pharma AG, Basel, Switzerland).⁵⁵ In Phase II studies, QVA149 significantly improved lung function ($P < 0.05$ at all time points) and had a rapid onset of action compared with placebo and indacaterol, as well as producing sustained bronchodilation over 24 hours.^{56,57} QVA149 is undergoing Phase III investigation in the ongoing IGNITE clinical trial program, involving more than 7000 patients with COPD.⁵⁸ Data from four studies in the IGNITE program have recently been announced.⁵⁹ In SHINE, which enrolled more than 2100 patients, QVA149 showed superior improvement in trough FEV₁ ($P < 0.001$) compared with once-daily indacaterol, glycopyrronium, and tiotropium. The ILLUMINATE study showed that once-daily QVA149 provided significant improvements in lung function compared with twice-daily salmeterol-fluticasone in symptomatic

patients with COPD. The results of BRIGHT showed that patients achieved significantly better exercise tolerance compared with placebo ($P = 0.006$), while ENLIGHTEN demonstrated that QVA149 was well tolerated with a safety and tolerability profile similar to that of placebo. In addition, at a press briefing during the European Respiratory Society meeting in 2012, Novartis stated that the results of SPARK, which is also part of the IGNITE program and involved 2224 patients over a period of 64 weeks, have shown that QVA149 reduced the overall risk of exacerbations compared with glycopyrronium.

Conclusion

Glycopyrronium delivered once daily via the Breezhaler device is an effective and well tolerated treatment for the symptoms of COPD. It has a rapid onset of action with sustained bronchodilation and benefits on important outcomes in COPD, such as dyspnea, exacerbations, and health status, which are comparable with the current gold standard treatment for COPD.

Disclosure

RB has received reimbursement for attending scientific conferences, and/or fees for lecturing and/or consulting from AstraZeneca, Boehringer Ingelheim, Chiesi, GlaxoSmithKline, Novartis, and Nycomed. The Pulmonary Department at Mainz University Hospital received financial compensation for services performed during participation in single and multicenter clinical Phase I–IV trials organized by various pharmaceutical companies. DB is an employee of Novartis Pharmaceuticals Corporation. The authors were assisted in the preparation of the manuscript by Roberta Sottocornola, a professional medical writer contracted to CircleScience (Macclesfield, UK), and Mark J Fedele (Novartis). Writing support was funded by Novartis Pharma AG.

References

1. Global Initiative for Obstructive Lung Disease. Global strategy for the diagnosis, management and prevention of chronic obstructive pulmonary disease. GOLD; 2011. Available from: <http://www.goldcopd.com>. Accessed July 11, 2012.
2. Partridge MR, Karlsson N, Small IR. Patient insight into the impact of chronic obstructive pulmonary disease in the morning: an Internet survey. *Curr Med Res Opin*. 2009;25(8):2043–2048.
3. Partridge MR, Miravittles M, Ståhl E, Karlsson N, Svensson K, Welte T. Development and validation of the Capacity of Daily Living during the Morning questionnaire and the Global Chest Symptoms Questionnaire in COPD. *Eur Respir J*. 2010;36(1):96–104.
4. Kessler R, Partridge MR, Miravittles M, et al. Symptom variability in patients with severe COPD: a pan-European cross-sectional study. *Eur Respir J*. 2011;37(2):264–272.

5. Higgins V, Broomfield S, Small M. Symptoms, consultations and comorbidities in real-world COPD patients classified by the GOLD 2011 strategy. Abstract accepted at the COPD8 International Conference on Chronic Obstructive Pulmonary Disease; 2012.
6. Celli BR, Cote CG, Lareau SC, Meek PM. Predictors of survival in COPD: more than just the FEV₁. *Respir Med*. 2008;102 Suppl 1: S27–S35.
7. Beeh KM, Beier J. The short, the long and the “ultra-long”: why duration of bronchodilator action matters in chronic obstructive pulmonary disease. *Adv Ther*. 2010;27(3):150–159.
8. Tashkin DP. Is a long-acting inhaled bronchodilator the first agent to use in stable chronic obstructive pulmonary disease? *Curr Opin Pulm Med*. 2005;11(2):121–128.
9. Bourbeau J, Bartlett SJ. Patient adherence in COPD. *Thorax*. 2008;63(9): 831–838.
10. Tamura G, Ohta K. Adherence to treatment by patients with asthma or COPD: comparison between inhaled drugs and transdermal patch. *Respir Med*. 2007;101(9):1895–1902.
11. Toy EL, Beaulieu NU, McHale JM, et al. Treatment of COPD: relationships between daily dosing frequency, adherence, resource use, and costs. *Respir Med*. 2011;105(3):435–441.
12. UK Medicines Information New Drugs Online. Glycopyrrolate; 2012. Available from: http://www.ukmi.nhs.uk/applications/ndo/record_view_open.asp?newDrugID=4793. Accessed July 11, 2012.
13. Vectura press release. Novartis files NDA for NVA237 as a treatment for chronic obstructive pulmonary disease (COPD) in Japan; 2011. Available from: <http://www.vectura.com/news/releases/2011/25-nov-2011.aspx>. Accessed July 11, 2012.
14. Sims MW, Panettieri RA Jr. Profile of aclidinium bromide in the treatment of chronic obstructive pulmonary disease. *Int J Chron Obstruct Pulmon Dis*. 2011;6:457–466.
15. UK Medicines Information New Drugs Online. Aclidinium bromide; 2012. Available from: http://www.ukmi.nhs.uk/applications/ndo/record_view_open.asp?newDrugID=4515. Accessed August 15, 2012.
16. Vogelmeier C, Banerji D. NVA237, a long-acting muscarinic antagonist, as an emerging therapy for chronic obstructive pulmonary disease. *Thorax*. 2011;5(3):163–173.
17. Ali-Melkkila T, Kanto J, Iisalo E. Pharmacokinetics and related pharmacodynamics of anticholinergic drugs. *Acta Anaesthesiol Scand*. 1993;37(7):633–642.
18. Eglen RM, Reddy H, Watson N, Challiss RA. Muscarinic acetylcholine receptor subtypes in smooth muscle. *Trends Pharmacol Sci*. 1994; 15(4):114–119.
19. Abrams P, Andersson KE, Buccafusco JJ, et al. Muscarinic receptors: their distribution and function in body systems, and the implications for treating overactive bladder. *Br J Pharmacol*. 2006;148(5): 565–578.
20. Trifilieff A, Cope N, Bohacek B, et al. The inhaled muscarinic receptor antagonist, glycopyrrolate, has a favourable side-effect profile in a brown Norway rat lung function model when compared with tiotropium. *Chest*. 2007;132(4):530a.
21. Cooper N, Walker I, Knowles I. NVA237 has similar efficacy as tiotropium bromide against methacholine-induced bronchoconstriction and less systemic effect on cardiovascular variables in an anaesthetized rabbit model [Abstract]. *Eur Respir J*. 2006;28 Suppl 50:P2544.
22. Ishii M, Kurachi Y. Muscarinic acetylcholine receptors. *Curr Pharm Des*. 2006;12(28):3573–3581.
23. Sykes DA, Dowling MR, Leighton-Davies J, et al. The influence of receptor kinetics on the onset and duration of action, and the therapeutic index of NVA237 and tiotropium. *J Pharmacol Exp Ther*. August 1, 2012. [Epub ahead of print.]
24. Chapman KR, Fogarty CM, Peckitt C, et al. Delivery characteristics and patients’ handling of two single-dose dry-powder inhalers used in COPD. *Int J Chron Obstruct Pulmon Dis*. 2011;6:353–363.
25. Pavkov R, Mueller S, Fiebich K, et al. Characteristics of a capsule based dry powder inhaler for the delivery of indacaterol. *Curr Med Res Opin*. 2010;26(11):2527–2533.
26. Wieshammer S, Dreyhaupt J. Dry powder inhalers: which factors determine the frequency of handling errors? *Respiration*. 2008;75(1): 18–25.
27. Terzano C. Dry powder inhalers and the risk of error. *Respiration*. 2008; 75(1):14–15.
28. Arievidh H, Overend T, Renard D, et al. A novel model-based approach for dose determination of NVA237 in COPD. *Respir Res*. Submitted 2012.
29. Fogarty C, Hattersley H, Di Scala L, Drollmann A. Bronchodilatory effects of NVA237, a once daily long-acting muscarinic antagonist, in COPD patients. *Respir Med*. 2011;105(3):337–342.
30. Verkindre C, Fukuchi Y, Flémale A, et al. Sustained 24-h efficacy of NVA237, a once-daily long-acting muscarinic antagonist, in COPD patients. *Respir Med*. 2010;104(10):1482–1489.
31. Vogelmeier C, Verkindre C, Cheung D, et al. Safety and tolerability of NVA237, a once-daily long-acting muscarinic antagonist, in COPD patients. *Pulm Pharmacol Ther*. 2010;23(5):438–444.
32. D’Urzo A, Ferguson GT, van Noord JA, et al. Efficacy and safety of once-daily NVA237 in patients with moderate-to-severe COPD: the GLOW1 trial. *Respir Res*. 2011;12:156.
33. Kerwin E, Hébert J, Korenblat P, et al. Efficacy and safety of NVA237 versus placebo and tiotropium in patients with moderate-to-severe COPD over 52 weeks: The GLOW2 study. *Eur Respir J*. July 26, 2012. [Epub ahead of print.]
34. Witek TJ Jr, Mahler DA. Minimal important difference of the transition dyspnoea index in a multinational clinical trial. *Eur Respir J*. 2003; 21(2):267–272.
35. Jones P, Lareau S, Mahler DA. Measuring the effects of COPD on the patient. *Respir Med*. 2005;99 Suppl B:S11–S18.
36. Beeh KM, Singh D, Di Scala L, Drollmann A. Once-daily NVA237 improves exercise tolerance from the first dose in patients with COPD: the GLOW3 trial. *Int J Chron Obstruct Pulmon Dis*. 2012;7:503–513.
37. O’Donnell DE, Webb KA. The major limitation to exercise performance in COPD is dynamic hyperinflation. *J Appl Physiol*. 2008;105(2): 753–755.
38. Guenette JA, Webb KA, O’Donnell DE. Does dynamic hyperinflation contribute to dyspnoea during exercise in patients with COPD? *Eur Respir J*. 2012;40(2):322–329.
39. Global Initiative for Obstructive Lung Disease. Global strategy for diagnosis, management and prevention of COPD. 2009. Available from: <http://www.goldcopd.com>. Accessed July 11, 2012.
40. Cooper CB. Airflow obstruction and exercise. *Respir Med*. 2009;103(3): 325–334.
41. Vogiatzis I. Strategies of muscle training in very severe COPD patients. *Eur Respir J*. 2011;38(4):971–975.
42. Breekeveldt-Postma NS, Koerselman J, Erkens JA, Lammers JW, Herings RM. Enhanced persistence with tiotropium compared with other respiratory drugs in COPD. *Respir Med*. 2007;101(7):1398–1405.
43. Casaburi R, Briggs DD Jr, Donohue JF, Serby CW, Menjoge SS, Witek TJ Jr. The spirometric efficacy of once-daily dosing with tiotropium in stable COPD: a 13-week multicenter trial. The US Tiotropium Study Group. *Chest*. 2000;118(5):1294–1302.
44. Spencer S, Calverley PM, Burge PS, Jones PW. Impact of preventing exacerbations on deterioration of health status in COPD. *Eur Respir J*. 2004;23(5):698–702.
45. Miravittles M, Ferrer M, Pont A, et al. Effect of exacerbations on quality of life in patients with chronic obstructive pulmonary disease: a 2 year follow up study. *Thorax*. 2004;59(5):387–395.
46. Anzueto A. Impact of exacerbations on COPD. *Eur Respir Rev*. 2010; 19(116):113–118.
47. Wedzicha JA, Seemungal TA. COPD exacerbations: defining their cause and prevention. *Lancet*. 2007;370(9589):786–796.
48. Donaldson GC, Seemungal TA, Bhowmik A, Wedzicha JA. Relationship between exacerbation frequency and lung function decline in chronic obstructive pulmonary disease. *Thorax*. 2002;57(10): 847–852.

49. Donohue JF, van Noord JA, Bateman ED, et al. A 6-month, placebo-controlled study comparing lung function and health status changes in COPD patients treated with tiotropium or salmeterol. *Chest*. 2002; 122(1):47–55.
50. Brusasco V, Hodder R, Miravittles M, et al. Health outcomes following treatment for six months with once daily tiotropium compared with twice daily salmeterol in patients with COPD. *Thorax*. 2003;58(5): 399–404.
51. Casaburi R, Mahler DA, Jones PW, et al. A long-term evaluation of once-daily inhaled tiotropium in chronic obstructive pulmonary disease. *Eur Respir J*. 2002;19(2):217–224.
52. Al-Showair RA, Tarsin WY, Assi KH, Pearson SB, Chrystyn H. Can all patients with COPD use the correct inhalation flow with all inhalers and does training help? *Respir Med*. 2007;101(11):2395–2401.
53. Janssens W, Van den Brande P, Hardeman E, et al. Inspiratory flow rates at different levels of resistance in elderly COPD patients. *Eur Respir J*. 2008;31(1):78–83.
54. Cazzola M, Molimard M. The scientific rationale for combining long-acting beta2-agonists and muscarinic antagonists in COPD. *Pulm Pharmacol Ther*. 2010;23(4):257–267.
55. van der Molen T, Cazzola M. Beyond lung function in COPD management: effectiveness of LABA/LAMA combination therapy on patient-centred outcomes. *Prim Care Respir J*. 2012;21(1):101–118.
56. van Noord JA, Buhl R, Laforce C, et al. QVA149 demonstrates superior bronchodilation compared with indacaterol or placebo in patients with chronic obstructive pulmonary disease. *Thorax*. 2010;65(12): 1086–1091.
57. van de Maele B, Fabbri LM, Martin C, Horton R, Dolker M, Overend T. Cardiovascular safety of QVA149, a combination of indacaterol and NVA237, in COPD patients. *COPD*. 2010;7(6):418–427.
58. Banerji D, Chen H, Patalano F. The QVA149 IGNITE programme: dual bronchodilation as the future of COPD management. Proceedings of the 6th International Primary Care and Respiratory Group (IPCRG) World Conference [Abstract]; April 25–28, 2012; Edinburgh, UK. Abstract 179.
59. Vectura press release. Available from: <http://www.vectura.com/news/releases/2012/24-apr-2012.aspx>. Accessed August 15, 2012.

International Journal of COPD

Publish your work in this journal

The International Journal of COPD is an international, peer-reviewed journal of therapeutics and pharmacology focusing on concise rapid reporting of clinical studies and reviews in COPD. Special focus is given to the pathophysiological processes underlying the disease, intervention programs, patient focused education, and self management protocols.

Submit your manuscript here: <http://www.dovepress.com/international-journal-of-copd-journal>

Dovepress

This journal is indexed on PubMed Central, MedLine and CAS. The manuscript management system is completely online and includes a very quick and fair peer-review system, which is all easy to use. Visit <http://www.dovepress.com/testimonials.php> to read real quotes from published authors.