

# Sustained treatment effect in attention-deficit/hyperactivity disorder: focus on long-term placebo-controlled randomized maintenance withdrawal and open-label studies

David W Goodman

Department of Psychiatry and Behavioral Sciences, Johns Hopkins University School of Medicine, Baltimore, MD, USA

**Abstract:** Attention-deficit/hyperactivity disorder (ADHD) is a neurodevelopmental disorder that often persists throughout life. Approximately two-thirds of patients with a childhood diagnosis of ADHD continue to experience clinically significant symptoms into adulthood. Nevertheless, most of these individuals consider themselves “well,” and a vast majority discontinue medication treatment during adolescence. As evidence concerning the adult presentation of ADHD becomes more widely accepted, increasing numbers of physicians and patients will face decisions about the benefits and risks of continuing ADHD treatment. The risks associated with psychostimulant pharmacotherapy, including abuse, dependence, and cardiovascular events, are well understood. Multiple clinical trials demonstrate the efficacy of psychostimulants in controlling ADHD symptoms in the short term. Recent investigations using randomized withdrawal designs now provide evidence of a clinically significant benefit with continued long-term ADHD pharmacotherapy and provide insight into the negative consequences associated with discontinuation. Because many patients lack insight regarding their ADHD symptoms and impairments, they may place a low value on maintaining treatment. Nevertheless, for patients who choose to discontinue treatment, physicians can remain a source of support and schedule follow-up appointments to reassess patient status. Medication discontinuation can be used as an opportunity to help patients recognize their most impairing symptoms, learn and implement behavioral strategies to cope with ADHD symptoms, and understand when additional supportive resources and the resumption of medication management may be necessary.

**Keywords:** psychostimulant, nonstimulant, adult, child

## Introduction

In the United States, an estimated 4.4% of adults meet diagnostic criteria for attention-deficit/hyperactivity disorder (ADHD).<sup>1</sup> The prevalence of syndromic ADHD is estimated to be lower (between 2.8% and 3.3%) in elderly adults aged 60 years and older from countries in the European Union.<sup>2,3</sup> Among adults who received a diagnosis of ADHD in childhood, approximately 65% continued to experience significant ADHD symptoms and functional impairments, although persistence estimates vary widely.<sup>4-6</sup> Also, recent findings suggest that, in addition to those who continue to meet full diagnostic criteria for ADHD, a number of adults display persistence of a subset of ADHD symptoms. They continue to experience substantial functional deficits associated with those symptoms.<sup>7</sup> The factors that determine ADHD persistence are under active investigation. Recent studies suggest that a childhood ADHD symptom profile, along

Correspondence: David W Goodman  
Department of Psychiatry and Behavioral Sciences, Johns Hopkins University School of Medicine, 10751 Falls Road, Suite 306, Baltimore, MD 21093, USA  
Tel +1 410 583 2726  
Email dgoodma4@jhmi.edu

with psychiatric comorbidity, may be predictive of ADHD persistence. This profile includes predominant inattentive symptoms; more severe symptoms during childhood; and the presence of psychiatric comorbidities, executive function deficits, and some maternal psychopathologies.<sup>5,8,9</sup>

The behavioral pathology of ADHD is associated with abnormalities in neuroanatomy and neurophysiology in both children and adults.<sup>10–15</sup> ADHD appears to be a highly heritable disorder marked by the presence of familial neuropathologic patterns and specific genetic polymorphisms associated with ADHD pathology.<sup>16–22</sup> Neuroimaging studies of individuals with ADHD have also identified delayed neurodevelopment, volumetric differences in specific brain areas, and differences in neural activation for tasks when compared to those without ADHD.<sup>23,24</sup> Although some of these abnormalities may lessen or resolve as the brain matures, other central neurologic abnormalities persist in adulthood. The functional implications of persistent neurologic abnormalities have not been clearly defined. However, compared with normal controls, cognitive deficits in untreated adults with ADHD appear to persist throughout life.<sup>25</sup>

ADHD, across the lifespan, is marked by varying degrees of hyperactivity, impulsivity, and attentional symptoms across settings.<sup>14</sup> Patients may also exhibit poor emotional control and motivational problems.<sup>15</sup> Recommended first-line pharmacotherapy for ADHD in children and adults includes psychostimulants such as methylphenidate and amphetamines, as well as nonstimulant medications such as atomoxetine.<sup>6,26–28</sup> The nonstimulants guanfacine extended-release and clonidine extended-release are US Food and Drug Administration-approved for the treatment of ADHD in children and adolescents.<sup>29</sup>

## Need for a long-term approach to adult ADHD management

In the past, ADHD treatment was often routinely discontinued during adolescence; it was unclear whether older patients still exhibited clinically significant symptoms or functional impairments. Moreover, it was uncertain if older patients derived benefits from continued treatment. However, the medical community is now better aware of the changing clinical presentation of ADHD through life transitions and of the need for a longitudinal, developmental approach toward ADHD detection, reassessment, and management.<sup>30</sup> During childhood, ADHD can be readily identified by marked overt physical hyperactivity and impulsivity, especially in boys, whereas inattention was often overlooked; in adulthood, such hyperactivity and impulsivity wane and may be internalized

as restlessness or impatience, although inattentiveness and disorganization persist and may become the predominant impairing symptoms.<sup>31,32</sup> Moreover, with time, ADHD symptoms and impairments take on a progressively more distinct adult presentation.<sup>32–35</sup> Impulsivity may be evidenced by sexual promiscuity, financial problems, high job turnover, and/or a short temper; inattention may be evidenced by a high number of traffic citations/accidents, disorganization, chronic tardiness, difficulty finishing projects, forgetfulness, and/or procrastination. Hyperactivity in adults may be experienced as an internal feeling of restlessness or being on edge and expressed outwardly through fidgeting or an inability to sit for long periods of time. Many patients may fail to associate these behaviors with ADHD and may instead consider them to be character traits or part of their personality. Such patients may consider themselves “well” because their childhood symptoms (the reduction of hyperactivity) seem to have resolved; therefore, these patients often discontinue treatment during the transition from adolescence to young adulthood.<sup>36</sup>

Persisting symptoms in adults with ADHD, although less evident than those in childhood, are associated with relatively greater functional impairments.<sup>32</sup> Older adolescents and adults who do not receive treatment for ADHD may suffer lasting consequences related to uncontrolled symptoms and impaired functioning (eg, low occupational/educational attainment, arrest, unintended pregnancy, sexually transmitted diseases, marital problems, and injury).<sup>37</sup> Possibly associated with such functional impairments, the development of certain psychiatric comorbidities (ie, conduct disorders or depression) may also exacerbate poor ADHD symptom control.<sup>38,39</sup>

The socioeconomic and personal burdens of ADHD experienced by patients, their families, and the community may be mitigated through appropriate long-term treatment.<sup>40–42</sup> In addition, in a published systematic review of outcomes, increased substance use disorders or suicidality, compared to untreated ADHD, were not seen with long-term treatment.<sup>42</sup> Some evidence suggests that, aside from reductions in core ADHD symptoms, quality of life may be improved with pharmacotherapy.<sup>43</sup> Although treatment may not “normalize” functioning to the level seen in non-ADHD individuals,<sup>42</sup> large numbers of observational studies worldwide suggest that maintained ADHD treatment over time tends to have a significant beneficial impact on aspects of a patient’s life, including driving, obesity, self-esteem, social functioning, and academic performance when compared to individuals with untreated ADHD.<sup>42,44,45</sup> Thus, it is reasonable to examine

how the need to continue therapy can be assessed, weighing relative risks and benefits. These risks and benefits include a balance between the economic impact of long-term pharmacotherapy weighed against the potential for lower occupational attainment and wages, potential increased legal and insurance costs, and overall quality of life for patients and family members.

## Investigating treatment maintenance and long-term efficacy

Because ADHD persists into adulthood in about two-thirds of patients who have a childhood diagnosis and is associated with significant functional impairments, it would seem that long-term treatment maintenance is necessary and – as evidence shows in many cases – beneficial. In about one-third of these patients, persistent ADHD symptoms may not meet current diagnostic thresholds.<sup>5</sup> As with any pharmacotherapy, medications indicated for ADHD are associated with certain risks. In the case of psychostimulants, these include abuse, misuse, addiction, diversion, cardiovascular safety risks such as elevated blood pressure and rare but life-threatening events/cardiac problems (ie, sudden death, myocardial infarction, and stroke); with long-term use, decreases in height and weight have also been a concern with pediatric patients.<sup>46–48</sup> However, there is a lack of high-quality evidence from controlled trials in adults regarding the possible benefits of long-term treatment or the consequences of treatment discontinuation.<sup>49</sup>

Randomized, controlled clinical trials in subjects with ADHD have been conducted in children and have been short-term. Most long-term ADHD treatment trials have been observational and open-label in nature (Table 1).<sup>50–64</sup> Open-label trials are valuable because they often approximate real-world clinical practice, marked by flexible dosing, to address changes in efficacy or treatment tolerability. In all available open-label trials with durations of 1 year or more, a high level of symptom control has been observed throughout the entire study period, in some cases extending up to 24 months (Table 1). Open-label evidence, however, does not rigorously demonstrate maintained treatment efficacy or the consequences of treatment discontinuation.

There is a need to more thoroughly examine the value of long-term ADHD pharmacotherapy to support the more widespread use of a lifelong care management approach toward ADHD. Because there are well-established, effective treatments available for ADHD, it is considered unethical to randomly assign subjects to long-term placebo treatment. Adequate subject retention in long-term trials

is also problematic. The randomized withdrawal study design is one research approach aimed at addressing these challenges. This design has been used to rigorously investigate the value of continued treatment in other lifelong illnesses, such as major depressive disorder<sup>65</sup> and psoriasis.<sup>66</sup> For withdrawal trials, subjects with a clinically significant response to active treatment in a prolonged lead-in phase are randomly assigned to double-blind treatment with a placebo or continued active treatment (Figure 1). For ethical reasons, subjects randomized to a placebo who exhibit significant symptom recurrence and impairments are discontinued from the study and given the opportunity to re-establish active treatment. In this manner, the value of continued treatment may be established; effective treatment is not withheld for an extended period of time. Randomized withdrawal studies can be used to examine maintenance of response, but it should be noted that they do not describe efficacy versus placebos.

## Long-term treatment effectiveness in ADHD

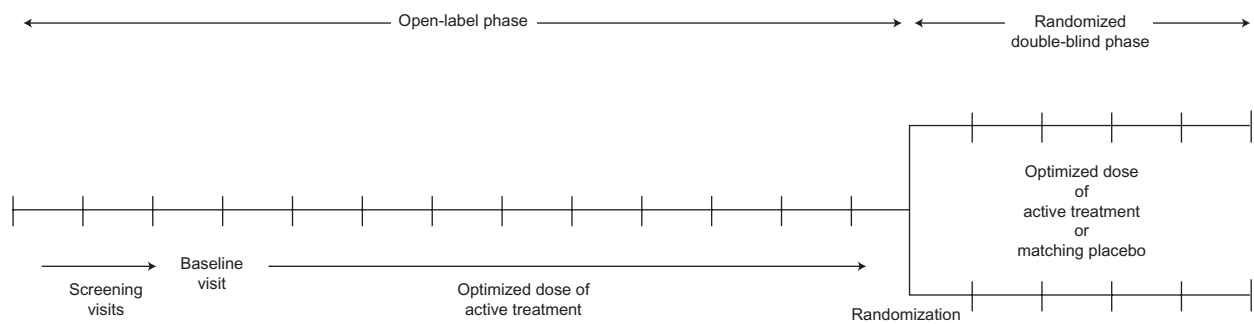
A small number of randomized, placebo-controlled withdrawal trials have examined the maintenance of efficacy in adults with ADHD (Table 2).<sup>67–70</sup> These investigations add to the literature by examining the duration, extent, and nature of symptom control that remain when active treatment is continued compared to when it is discontinued. For these trials, investigators examined ADHD symptom ratings and classroom behaviors<sup>69</sup> or rates and time to ADHD symptom relapse or loss of response, defined as a deterioration of  $\geq 2$  points on the Clinical Global Impressions-Improvement (CGI-I) scale and a 50%–90% decline in ADHD symptoms from baseline.<sup>67,68,70</sup>

In the earliest of these trials, Nolan et al examined the impact of randomized medication discontinuation in a small sample of children (aged 6–18 years,  $n = 19$ ) with ADHD and comorbid chronic tic disorder or Tourette disorder.<sup>69</sup> All subjects were on a stable psychostimulant regimen for at least 1 year prior to enrollment ( $n = 17$  on methylphenidate;  $n = 2$  on dextroamphetamine). Using a two-period crossover design, each subject experienced a randomized, double-blind placebo treatment for 2 weeks and double-blind, continued active treatment for 2 weeks. Analysis of 4-week withdrawal-phase data showed a significant advantage of continued medication treatment compared with a placebo based on all ADHD symptom ratings with mean (SD) Child Symptom Inventory-3R scores of 10.5 (9.7) and 5.5 (6.4) for placebo and active treatment ( $P = 0.0004$ ), respectively. Core ADHD symptoms and aggression by Mother's Method for

**Table 1** Long-term, open-label investigations of ADHD pharmacotherapy

Author	Design	Subjects (n)	Treatment	Duration	Outcomes
<b>MPH</b>					
Wilens et al <sup>50</sup>	Long-term open-label study	Children aged 6–9 and 10–13 years (n = 407)	OROS MPH 18, 36, 54 mg/day	24 months	Treatment rated “good” or “excellent” Parents/caregivers: 85% Physicians: 92%
Adler et al <sup>51</sup>	Open-label, dose-titration, flexible-dose study	Adults aged 18–65 years (n = 521; responders, n = 383)	OROS MPH 36, 54, 72, 90, 108 mg/day	6–12 months	Mean decrease in AISRS total score: –18.7
<b>MAS</b>					
Biederman et al <sup>52</sup>	Open-label extension study	Adults aged ≥ 18 years (n = 223)	MAS-XR 20, 40, 60 mg/day	24 months	Mean decrease in ADHD-RS-IV total score: –5.7 for MAS-XR continuous subjects; –11.6 for MAS-XR-naïve subjects (P < 0.001 for both)
Goodman et al <sup>62</sup>	Open-label, flexible-dose study	Adults aged ≥ 18 years (n = 702)	MAS-XR 10 to 60 mg/day	Core 10-week phase; 20-week extension phase	Mean decreases in ADHD-RS-IV total score ranged from 18.8–21.6 for ITT and prior treatment subgroups (P < 0.0001 for all)
<b>LDX</b>					
Findling et al <sup>53</sup>	Open-label single-arm study	Children aged 6–12 years (n = 272)	LDX 30, 50, 70 mg/day	12 months	Mean decrease in ADHD-RS-IV total score (ITT): –27.2 (P < 0.0001)
Weisler et al <sup>54</sup>	Open-label, single-arm study	Adults aged 18–55 years (n = 349)	LDX 30, 50, 70 mg/day Treated, n = 297 Placebo, n = 52	12 months	Mean decrease in ADHD-RS-IV total score: –24.8 (P < 0.0001)
Mattingly et al <sup>55</sup>	Open-label, single-arm study	Adults aged 18–55 years (n = 349)	LDX 30, 50, 70 mg/day Treated, n = 297 Placebo, n = 52	12 months	Mean decrease in ADHD-RS-IV total score: 30 mg, –16.2; 50 mg, –17.4; 70 mg, –18.6 (P < 0.0001)
Findling et al <sup>56</sup>	Open-label extension study	ADHD in children aged 13–17 years (n = 265)	LDX 30, 50, 70 mg/day	52 weeks	Mean decrease in ADHD-RS-IV total score: –26.2 (P < 0.001)
<b>ATX</b>					
Adler et al <sup>57,63</sup>	Open-label extension study	ADHD in adults Study I: (n = 280) Study II: (n = 256)	ATX 25, 40, 60 mg/twice a day Study I: 141 treated 139 placebo Study II: 129 treated 127 placebo	97 weeks	Mean decrease in CAARS-Inv; total score: –8.8 (P < 0.001)
Kratochvil et al <sup>58</sup>	Meta-analysis	Children aged 6 and 7 years (n = 272)	ATX 60, 90, 120 mg/day	≥ 24 months	Mean decrease in ADHD-RS-IV total score: –19.3 (P < 0.001)
Wilens et al <sup>59</sup>	Meta-analysis	Children aged 6–16 years (n = 601)	ATX Target: 1.2 mg/kg/day Maximum: 1.8 mg/kg/day	Up to 24 months	Mean decrease in ADHD-RS-IV total score: –20.2 (P < 0.001)
<b>GXR</b>					
Sallee et al <sup>60</sup>	Open-label study	Children aged 6–17 years (n = 272)	GXR 1, 2, 3, 4 mg/day alone/with psychostimulant	24 months	Mean decrease in ADHD-RS-IV total score: –20.1 (P < 0.001)
Biederman et al <sup>64</sup>	Open-label extension study	Children aged 6–17 years (n = 240)	GXR 2 mg/day	24 months	Mean decrease ADHD-RS-IV total score: –18.1 (P < 0.001)
Rubin et al <sup>61</sup>	Open-label extension study	Children aged 6–17 years (n = 54)	GXR up to 4 mg/day with psychostimulant	24 months	Mean decrease in ADHD-RS-IV total score: –16.1 (P < 0.001)

**Abbreviations:** ADHD, attention-deficit /hyperactivity disorder; AISRS, ADHD Investigator Symptom Report Scale; ADHD-RS-IV, ADHD Rating Scale IV; ATX, atomoxetine; CAARS-Inv, Conners' Adult ADHD Rating Scale: Investigator-Rated; GXR, guanfacine extended-release; ITT, intention to treat; LDX, lisdexamfetamine dimesylate; MAS, mixed amphetamine salts; MPH, methylphenidate; OROS, osmotic release oral system; XR, extended release.



**Figure 1** Hypothetical schematic study design.

Subgrouping (MOMS) and continuous performance tests, as well as observed simulated classroom behaviors such as time on task and worksheet completion, also demonstrated significant advantages for continued treatment.<sup>69</sup>

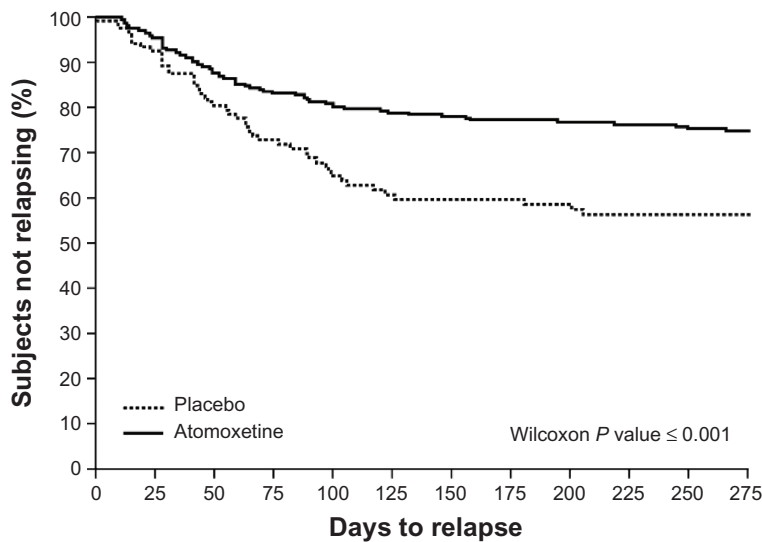
In another randomized withdrawal trial,<sup>68</sup> children (aged 6–15 years;  $n = 416$ ) with ADHD who showed adequate clinical response to the nonstimulant atomoxetine were re-randomized to continued active treatment or a placebo after 12 weeks. At the 9-month study endpoint, 22.3% of subjects who continued with atomoxetine exhibited relapse (defined as symptom return  $\geq 90\%$  of baseline in ADHD Rating Scale (ADHD-RS) total scores and  $\geq 2$  points on the CGI-Severity [CGI-S] scale) compared to 37.9% of those given a placebo ( $P = 0.002$ ). A Kaplan–Meier analysis further showed that subjects switched to a placebo relapsed in a significantly shorter time than subjects who continued with atomoxetine (Figure 2).<sup>68</sup> Of note was the significant worsening of psychosocial functioning detected among subjects randomized to a placebo, based on the Child Health Questionnaire.

In a more recent trial, Biederman et al<sup>67</sup> conducted a three-phase investigation of methylphenidate (MPH) delivered via an osmotic-release oral system (OROS<sup>®</sup>, Alzo Corporation, Mountain View, CA, USA) in adults (aged 19–60 years;  $n = 223$ ) with ADHD. For the first phase, subjects were randomized to receive either a placebo or clinically optimized doses of OROS MPH for 6 weeks. Subjects who showed an adequate therapeutic response in the first phase (CGI-I of much or very much improved [ie, ratings of 1 or 2] and a reduction in ADHD Investigator Symptom Report Scale [AISRS] score  $> 30\%$ ) were then eligible to continue on to the second phase, in which Phase I treatment (OROS MPH or a placebo) was continued in double-blind fashion for an additional 24 weeks. In Phase III, OROS MPH responders were either re-randomized to a placebo or continued on OROS MPH for 4 weeks; placebo responders were not re-randomized. Figure 3 shows mean AISRS scores for the OROS MPH and placebo groups throughout each phase of the trial.<sup>67</sup> During the randomized withdrawal phase (ie, Phase III), subjects who were re-randomized to a placebo

**Table 2** Maintenance of efficacy: randomized withdrawal investigations of ADHD pharmacotherapy

Author	Subjects	Treatment	Duration	Outcome
Nolan et al <sup>69</sup>	Children aged 6–18 years with ADHD and a tic or Tourette disorder ( $n = 19$ )	Immediate-release MPH, dextroamphetamine, or placebo	2 weeks open-label, 4-week RW	ADHD symptom worsening with placebo ( $P < 0.0004$ )
Michelson et al <sup>68</sup>	Children aged 6–15 years ( $n = 416$ )	ATX Target dose: 1.2 mg/kg/day (max: 1.8 mg/kg/day)	12 weeks open-label, 9-month RW	Relapse ATX: 22.3% Placebo: 37.9% ( $P = 0.002$ )
Biederman et al <sup>67</sup>	Adults aged 19–60 years ( $n = 223$ )	OROS MPH Weighted dosing (max 1.3 mg/kg/day)	6 weeks double-blind efficacy, 24 weeks double-blind continuation, 4-week RW	Relapse OROS MPH: 0% Placebo: 18% (ns)
Brams et al <sup>70</sup>	Adults aged 18–55 years ( $n = 116$ )	LDX (30, 50, 70 mg/day) or placebo	3 weeks open treatment, 6-week RW	Relapse LDX: 8.9% Placebo: 75% ( $P < 0.0001$ )

**Abbreviations:** ADHD, attention-deficit/hyperactivity disorder; ATX, atomoxetine; LDX, lisdexamfetamine dimesylate; MPH, methylphenidate; ns, not significant; OROS, osmotic release oral system; RW, randomized withdrawal.



**Figure 2** Time to ADHD relapse with atomoxetine versus a placebo.

**Notes:** Proportion of subjects meeting relapse criteria ( $\geq 90\%$  of baseline ADHD-RS-IV total score and CGI-S increase  $\geq 2$ ) for atomoxetine group compared with placebo group based on Kaplan–Meier analysis. Reprinted from *J Am Acad Child Adolesc Psychiatry*, 43(7), Michelson D, Buitelaar JK, Danckaerts M, et al, Relapse prevention in pediatric patients with ADHD treated with atomoxetine: a randomized, double-blind, placebo-controlled study, pages 896–904, Copyright 2004, with permission from the American Academy of Child and Adolescent Psychiatry.<sup>68</sup>

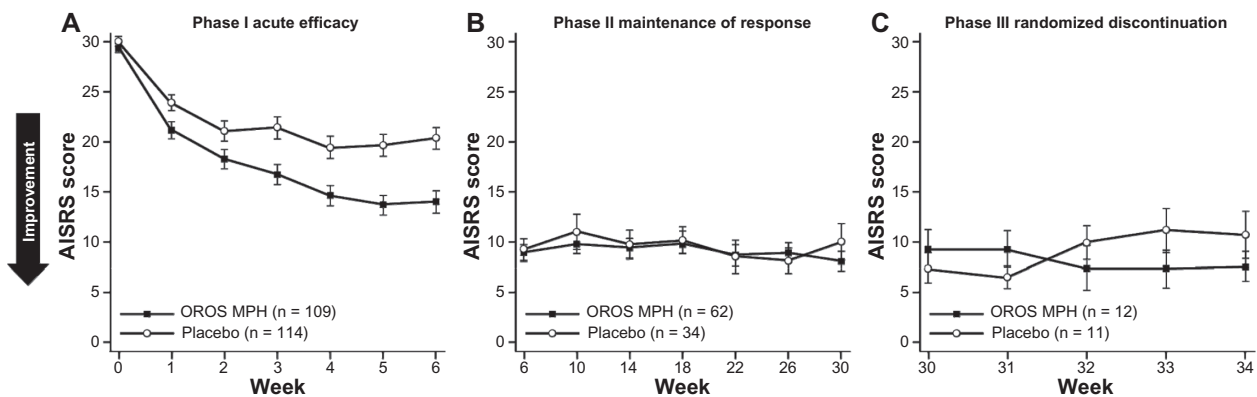
**Abbreviations:** ADHD, attention-deficit/hyperactivity disorder; ADHD-RS-IV, ADHD Rating Scale IV; CGI-S, Clinical Global Impressions-Severity.

showed a gradual small worsening of ADHD symptoms, but these symptoms did not return to baseline severity, whereas subjects who continued with OROS MPH showed a small improvement. No significant changes in AISRS scores were seen during double-blind withdrawal. The investigators noted that a robust therapeutic response among subjects treated with a placebo was indistinguishable from the responses among subjects given OROS MPH.

No significant difference in relapse rate (defined as a deterioration in CGI-I rating of  $\leq 2$  points or an AISRS improvement  $< 15\%$  from baseline) was detected between the subjects who continued active treatment (0%) versus those

who were discontinued (18%). Biederman et al propose that, with up to 30 weeks’ treatment with OROS MPH, ADHD symptom control may have allowed subjects to develop more effective, adaptive coping skills.<sup>67</sup>

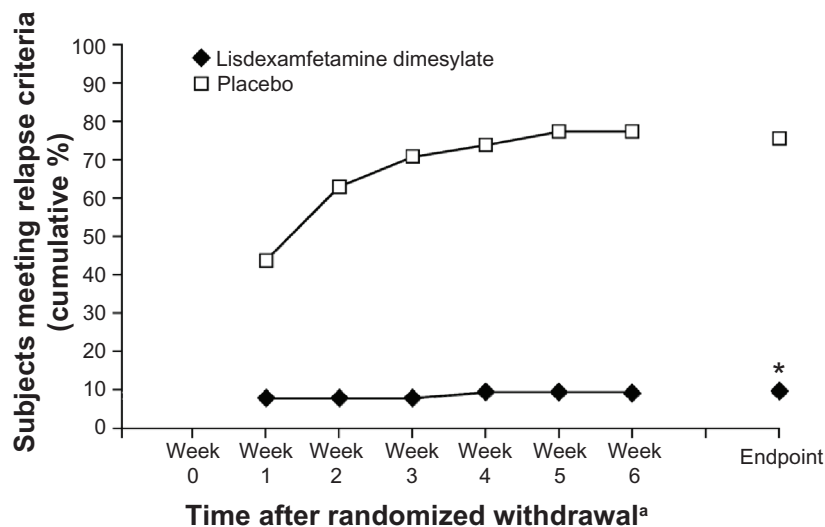
In the most recently published randomized withdrawal study, Brams et al enrolled adults (aged 18–55 years;  $n = 116$ ) with ADHD who had been receiving a stable dose of lisdexamfetamine dimesylate (LDX) (30, 50, or 70 mg/day) in a community setting for at least 6 months with an acceptable safety profile.<sup>70</sup> During the first study phase, all subjects received their usual prestudy doses of LDX for 3 weeks. All subjects were then randomized for 6 weeks to receive either a placebo



**Figure 3** ADHD symptom scores during acute treatment, maintenance, and randomized withdrawal phases.

**Note:** Mean AISRS scores by week for each phase of the study. Bars represent the standard error of the mean at each time point. Adapted with permission from Biederman J, Mick E, Surman C, et al, A randomized, 3-phase, 34-week, double-blind, long-term efficacy study of osmotic-release oral system–methylphenidate in adults with attention-deficit/hyperactivity disorder, *J Clin Psychopharmacol*, 30(5), 549–553.<sup>67</sup>

**Abbreviations:** ADHD, attention-deficit/hyperactivity disorder; AISRS, ADHD Investigator Symptom Report Scale; MPH, methylphenidate; OROS, osmotic release oral system.



**Figure 4** Percentage of subjects exhibiting relapse with lisdexamfetamine dimesylate or placebo.

**Notes:** Percentage of adult subjects with ADHD meeting relapse criteria ( $\geq 50\%$  increase in ADHD-RS-IV total score and  $\geq 2$  point increase in CGI-S rating) during a 6-week randomized withdrawal phase. <sup>a</sup>Weeks after randomized withdrawal, weeks 1 to 6, are analogous to weeks 4 to 9 of the overall study scheme. <sup>\*</sup> $P < 0.0001$  lisdexamfetamine dimesylate versus placebo. Brams M, Weisler R, Findling RL, et al. Maintenance of efficacy of lisdexamfetamine dimesylate in adults with attention-deficit/hyperactivity disorder: randomized withdrawal design. *The Journal of Clinical Psychiatry*. 7:977–983, 2012.<sup>70</sup> Copyright 2012. Physicians Postgraduate Press. Reprinted by permission.

**Abbreviations:** ADHD, attention-deficit/hyperactivity disorder; ADHD-RS-IV, ADHD Rating Scale IV; CGI-S, Clinical Global Impressions-Severity.

or the same dose of LDX as that given in the open-label phase. At the endpoint of the open-label treatment period, nearly all subjects were rated as not at all or mildly ill based on the CGI-S scale. During the randomized withdrawal phase, symptom relapse (defined as  $\geq 50\%$  increase in ADHD-RS-IV score and an increase in CGI-S rating  $\geq 2$ , indicating deterioration of symptom control) was seen in 8.9% of subjects who continued on LDX, compared with 75% of subjects assigned a placebo ( $P < 0.0001$ ) (Figure 4).<sup>70</sup> For subjects maintained on LDX, least squares (LS) mean changes in ADHD-RS-IV scores from baseline of the randomized withdrawal phase to the endpoint showed only a small change (+1.6 points), compared to larger changes in the placebo group (+16.8 points).<sup>70</sup>

## Conclusion and summary

Despite clear evidence that approximately two-thirds of adults with a childhood ADHD diagnosis continue to experience persistent symptoms and functional impairments, many older adolescent and adult patients believe they are “well” and do not adhere to treatment over the long term. Patients, family members, and some physicians who believe the patient is “well enough” may consider the use of medication to treat ADHD as “unnecessary” due to safety concerns. “Well enough” needs to be operationally defined by the patient and physician. Patients who lack insight into the presence of symptoms may agree that they are still underachieving at school, at their job, and at home even while denying ongoing

ADHD symptoms. A growing body of evidence from high-quality clinical trials demonstrates that many patients with ADHD continue to benefit from long-term therapy, whereas discontinuation is often accompanied by a return of symptoms. Continued clinical investigation is needed regarding factors that affect the risk of symptom relapse on discontinuation of pharmacotherapy. Findings will assist clinicians and patients in considering the balance of potential risks and benefits.

Long-term consistent use of medication may increase a patient’s awareness of ADHD impairments independent of the symptoms experienced. When symptom insight is lacking, daily underachievement may encourage the development of effective compensatory skills that persist after medication is stopped.<sup>67</sup> On a clinical note, patients may be aware of their symptoms and the resulting daily impairments. These patients may readily adopt behavioral skills to compensate. Patients who have little insight into their ADHD symptoms may acknowledge daily underachievement and be receptive to behavioral techniques. When patients have little insight into their ADHD symptoms and deny daily underachievement, pharmacologic and behavioral treatments are often rejected. Identifying which of these three categories a patient falls into will help a physician determine the best approach when discussing treatment options. Ultimately the discontinuation of medication is likely to lead to a fairly rapid recurrence of the symptoms and worsening of the functional impairments of the disorder. Brams et al demonstrated that, when physicians

and patients discontinue medication, follow-up visits within the first few weeks may allow the physician and patient to assess the return of symptoms.<sup>70</sup> Such an assessment will allow the physician to understand the degree of insight the patient has gained about changing ADHD symptoms and daily productivity, and may also enhance long-term management of the disorder.

Given that ADHD symptoms – particularly hyperactivity/impulsivity symptoms – tend to decrease with age in adolescents and young adults,<sup>71</sup> and also based on clinical experience, some patients may be able to successfully discontinue ADHD pharmacotherapy. Brief drug holidays under clinician supervision may help patients become more aware of their symptoms and functioning when they are on medication compared to when they are off. The odds of these holidays being successful may also be increased by timing the discontinuation of medication. A period when environmental demands are reduced or when patients may have increased support from a spouse or family member may limit the impact of ADHD-impaired functioning. Conversely, a patient's request to discontinue medication during environmentally demanding times is very likely to result in a severe escalation of ADHD impairments and should be delayed for “quieter” times.

It is important for clinicians to discuss the risks/benefits of discontinuing medication with their patients who have ADHD and highlight important symptoms and impairments that should be monitored following discontinuation. However, if the patient wishes to stop medication for reassessment or as an act of asserting control over treatment, the physician needs to remain supportive so as to maintain the therapeutic relationship and not discourage patients' active participation in managing their health care plan. Performing adequate follow-up allows clinicians to act as a resource upon which patients can rely should they experience a setback or have questions. Encouraging those patients already engaged in psychotherapy or behavioral therapy to continue that form of treatment may help them develop insight into their symptoms and learn behavioral strategies to manage impairments. In addition, participation in therapy may allow patients to see the strengths and limitations of behavioral techniques. If follow-up assessment indicates the return of symptoms or impairments, physicians should facilitate the discussion of resuming treatment. If the patient has not relapsed, it is important to discuss sentinel “red flag” symptoms the patient can easily recognize that may return at a later date. For patients who have successfully discontinued medication, it is crucial to maintain regular periodic follow-up, even if no treatment is prescribed. Patients may be relieved to know their physician

remains available when life transitions or stressful events require additional support consisting of a number of options (eg, organizational or goal coaching, cognitive behavioral therapy, psychological counseling, and/or a resumption of pharmacotherapy).

## Acknowledgments

Shire Development LLC provided funding to Scientific Communications and Information (SCI) for support in writing and editing this manuscript. Under the direction of the author, Michael Pucci, PhD, an employee of SCI, and Karen Dougherty, PhD, a former employee of SCI, provided writing assistance for this publication. Editorial assistance in formatting, proofreading, copyediting, and fact-checking was also provided by SCI. Thomas Babcock, DO, and Ryan Dammerman, MD, PhD, both of Shire Development LLC, also reviewed and edited this manuscript for scientific accuracy. Although Shire Development LLC was involved in the topic concept and fact-checking of information, the content of this manuscript, its ultimate interpretation, and the decision to submit it for publication in *Therapeutics and Clinical Risk Management* were made by the author alone.

## Disclosure

Dr Goodman has received research support and/or consultant fees from Avacat, Cephalon, Consumer Reports, GuidePoint Global, Healthequity Corporation, Lundbeck, Major League Baseball, McNeil, Med-IQ, Novartis, OptumInsight, Otsuka Pharmaceuticals, Prescriber's Letter, Pontifax, Professional Studies LLC, Shire Inc, Teva Pharmaceuticals, and the American Physician Institute for Advanced Professional Studies. He has also received honoraria from Medscape, the Neuroscience Education Institute, Temple University, WebMD, and the American Professional Society of ADHD and Related Disorders. The author reports no other conflicts of interest in this work.

## References

1. Kessler RC, Adler L, Barkley R, et al. The prevalence and correlates of adult ADHD in the United States: results from the National Comorbidity Survey Replication. *Am J Psychiatry*. 2006;163(4):716–723.
2. Michielsen M, Semeijn E, Comijs HC, et al. Prevalence of attention-deficit hyperactivity disorder in older adults in The Netherlands. *Br J Psychiatry*. 2012;201:298–305.
3. Guldberg-Kjar T, Johansson B. Old people reporting childhood AD/HD symptoms: retrospectively self-rated AD/HD symptoms in a population-based Swedish sample aged 65–80. *Nord J Psychiatry*. 2009;63(5):375–382.
4. Biederman J, Faraone S, Milberger S, et al. Predictors of persistence and remission of ADHD into adolescence: results from a four-year prospective follow-up study. *J Am Acad Child Adolesc Psychiatry*. 1996;35(3):343–351.



5. Biederman J, Petty CR, Clarke A, Lomedico A, Faraone SV. Predictors of persistent ADHD: an 11-year follow-up study. *J Psychiatr Res*. 2011;45(2):150–155.
6. Pliszka S; AACAP Work Group on Quality Issues. Practice parameter for the assessment and treatment of children and adolescents with attention-deficit/hyperactivity disorder. *J Am Acad Child Adolesc Psychiatry*. 2007;46(7):894–921.
7. Biederman J, Petty CR, Evans M, Small J, Faraone SV. How persistent is ADHD? A controlled 10-year follow-up study of boys with ADHD. *Psychiatry Res*. 2010;177(3):299–304.
8. Lara C, Fayyad J, De Graaf R, et al. Childhood predictors of adult attention-deficit/hyperactivity disorder: results from the World Health Organization World Mental Health Survey Initiative. *Biol Psychiatry*. 2009;65(1): 46–54.
9. Kessler RC, Green JG, Adler LA, et al. Structure and diagnosis of adult attention-deficit/hyperactivity disorder: analysis of expanded symptom criteria from the Adult ADHD Clinical Diagnostic Scale. *Arch Gen Psychiatry*. 2010;67(11):1168–1178.
10. Arnsten AF, Berridge CW, McCracken JT. The neurological basis of attention-deficit/hyperactivity disorder. *Prim Psychiatry*. 2009;16(7): 47–54.
11. Valera EM, Brown A, Biederman J, et al. Sex differences in the functional neuroanatomy of working memory in adults with ADHD. *Am J Psychiatry*. 2010;167(1):86–94.
12. Makris N, Biederman J, Valera EM, et al. Cortical thinning of the attention and executive function networks in adults with attention-deficit/hyperactivity disorder. *Cereb Cortex*. 2007;17(6):1364–1375.
13. Semrud-Clikeman M, Pliszka SR, Bledsoe J, Lancaster J. Volumetric MRI differences in treatment naive and chronically treated adolescents with ADHD-combined type. *J Atten Disord*. Epub May 31, 2012.
14. American Psychiatric Association. Attention-deficit and disruptive behavior disorders. In: American Psychiatric Association, editor. *Diagnostic and Statistical Manual of Mental Disorders, 4th Edition. Text Revision*. Washington, DC: American Psychiatric Association; 2000:85–93.
15. Barkley RA. Deficient emotional self-regulation: a core component of attention-deficit/hyperactivity disorder. *J ADHD Related Disord*. 2010; 1(2):5–37.
16. Banaschewski T, Becker K, Scherag S, Franke B, Coghill D. Molecular genetics of attention-deficit/hyperactivity disorder: an overview. *Eur Child Adolesc Psychiatry*. 2010;19(3):237–257.
17. Franke B, Neale BM, Faraone SV. Genome-wide association studies in ADHD. *Hum Genet*. 2009;126(1):13–50.
18. Poelmans G, Pauls DL, Buitelaar JK, Franke B. Integrated genome-wide association study findings: identification of a neurodevelopmental network for attention deficit hyperactivity disorder. *Am J Psychiatry*. 2011;168(4):365–377.
19. Biederman J, Petty CR, Wilens TE, et al. Familial risk analyses of attention deficit hyperactivity disorder and substance use disorders. *Am J Psychiatry*. 2008;165(1):107–115.
20. Durston S, Fossella JA, Mulder MJ, et al. Dopamine transporter genotype conveys familial risk of attention-deficit/hyperactivity disorder through striatal activation. *J Am Acad Child Adolesc Psychiatry*. 2008;47(1):61–67.
21. Shaw P, Gilliam M, Liverpool M, et al. Cortical development in typically developing children with symptoms of hyperactivity and impulsivity: support for a dimensional view of attention deficit hyperactivity disorder. *Am J Psychiatry*. 2011;168(2):143–151.
22. Castellanos FX, Proal E. Large-scale brain systems in ADHD: beyond the prefrontal-striatal model. *Trends Cogn Sci*. 2012;16(1): 17–26.
23. Bush G. Cingulate, frontal, and parietal cortical dysfunction in attention-deficit/hyperactivity disorder. *Biol Psychiatry*. 2011;69(12):1160–1167.
24. Del Campo N, Chamberlain SR, Sahakian BJ, Robbins TW. The roles of dopamine and noradrenaline in the pathophysiology and treatment of attention-deficit/hyperactivity disorder. *Biol Psychiatry*. 2011;69(12): e145–e157.
25. Biederman J, Fried R, Petty CR, et al. Cognitive development in adults with attention-deficit/hyperactivity disorder: a controlled study in medication-naïve adults across the adult life cycle. *J Clin Psychiatry*. 2011;72(1):11–16.
26. Canadian ADHD Resource Alliance. *Canadian ADHD Practice Guidelines (CAP-Guidelines)*, 3rd ed. Toronto: Canadian Attention Deficit Hyperactivity Disorder Resource Alliance (CADDRA); 2011. Available from: <http://www.caddra.ca/cms4/pdfs/caddraGuidelines2011.pdf>. Accessed September 13, 2012.
27. National Collaborating Centre for Mental Health. *Attention Deficit Hyperactivity Disorder: The NICE Guideline on Diagnosis and Management of ADHD in Children, Young People and Adults*. London: British Psychological Society; Royal College of Psychiatrists; 2009. Available from: <http://www.nice.org.uk/nicemedia/pdf/ADHDFullGuideline.pdf>. Accessed September 19, 2012.
28. Kooij SJ, Bejerot S, Blackwell A, et al. European consensus statement on diagnosis and treatment of adult ADHD: The European Network Adult ADHD. *BMC Psychiatry*. 2010;10:67.
29. Intuniv (guanfacine) [package insert]. Wayne, PA: Shire Pharmaceuticals Inc; 2011.
30. Turgay A, Goodman DW, Asherson P, et al. Lifespan persistence of ADHD: the life transition model and its application. *J Clin Psychiatry*. 2012;73(2):192–201.
31. Biederman J, Mick E, Faraone SV. Age-dependent decline of symptoms of attention deficit hyperactivity disorder: impact of remission definition and symptom type. *Am J Psychiatry*. 2000;157(5):816–818.
32. Das D, Cherbuin N, Butterworth P, Anstey KJ, Eastaer S. A population-based study of attention deficit/hyperactivity disorder symptoms and associated impairment in middle-aged adults. *PLoS One*. 2012;7(2):e31500.
33. Adler L, Kessler RC, Spencer T. *Adult ADHD Self-Report Scale (ASRS-v1.1) Symptom Checklist Instructions*. World Health Organization (WHO); Workgroup on Adult ADHD. Available from: [http://webdoc.nyumc.org/nyumc/files/psych/attachments/psych\\_adhd\\_checklist.pdf](http://webdoc.nyumc.org/nyumc/files/psych/attachments/psych_adhd_checklist.pdf). Accessed October 28, 2012.
34. Biederman J, Faraone SV, Spencer TJ, Mick E, Monuteaux MC, Alvardi M. Functional impairments in adults with self-reports of diagnosed ADHD: a controlled study of 1001 adults in the community. *J Clin Psychiatry*. 2006;67(4):524–540.
35. Able SL, Johnston JA, Adler LA, Swindle RW. Functional and psychosocial impairment in adults with undiagnosed ADHD. *Psychol Med*. 2007;37(1):97–107.
36. McCarthy S, Asherson P, Coghill D, et al. Attention-deficit hyperactivity disorder: treatment discontinuation in adolescents and young adults. *Br J Psychiatry*. 2009;194(3):273–277.
37. Goodman DW. The consequences of attention-deficit/hyperactivity disorder in adults. *J Psychiatr Pract*. 2007;13(5):318–327.
38. Babinski LM, Hartsough CS, Lambert NM. Childhood conduct problems, hyperactivity-impulsivity, and inattention as predictors of adult criminal activity. *J Child Psychol Psychiatry*. 1999;40(3): 347–355.
39. Chronis-Tuscano A, Molina BS, Pelham WE, et al. Very early predictors of adolescent depression and suicide attempts in children with attention-deficit/hyperactivity disorder. *Arch Gen Psychiatry*. 2010;67(10): 1044–1051.
40. Matza LS, Paramore C, Prasad M. A review of the economic burden of ADHD. *Cost Eff Resour Alloc*. 2005;3:5.
41. Powers RL, Marks DJ, Miller CJ, Newcorn JH, Halperin JM. Stimulant treatment in children with attention-deficit/hyperactivity disorder moderates adolescent academic outcome. *J Child Adolesc Psychopharmacol*. 2008;18(5):449–459.
42. Shaw M, Hodgkins P, Caci H, et al. A systematic review and analysis of long-term outcomes in attention deficit hyperactivity disorder: effects of treatment and non-treatment. *BMC Med*. 2012;10(1):99.
43. Coghill D. The impact of medications on quality of life in attention-deficit hyperactivity disorder: a systematic review. *CNS Drugs*. 2010;24(10):843–866.

44. Cox DJ, Merkel RL, Kovatchev B, Seward R. Effect of stimulant medication on driving performance of young adults with attention-deficit hyperactivity disorder: a preliminary double-blind placebo controlled trial. *J Nerv Ment Dis.* 2000;188(4):230–234.
45. Biederman J, Fried R, Hammerness P, et al. The effects of lisdexamfetamine dimesylate on the driving performance of young adults with ADHD: a randomized, double-blind, placebo-controlled study using a validated driving simulator paradigm. *J Psychiatr Res.* 2012;46(4): 484–491.
46. Concerta (methylphenidate HCl) [package insert]. Titusville, NJ: McNeil Pediatrics; 2010.
47. Vyvanse (lisdexamfetamine dimesylate) [package insert]. Wayne, PA: Shire US Inc; 2012.
48. Adderall XR (mixed salts of a single-entity amphetamine product) [package insert]. Wayne, PA: Shire US Inc; 2010.
49. Adler LD, Nierenberg AA. Review of medication adherence in children and adults with ADHD. *Postgrad Med.* 2010;122(1):184–191.
50. Wilens T, McBurnett K, Stein M, Lerner M, Spencer T, Wolraich M. ADHD treatment with once-daily OROS methylphenidate: final results from a long-term open-label study. *J Am Acad Child Adolesc Psychiatry.* 2005;44(10):1015–1023.
51. Adler LA, Orman C, Starr HL, et al. Long-term safety of OROS methylphenidate in adults with attention-deficit/hyperactivity disorder: an open-label, dose-titration, 1-year study. *J Clin Psychopharmacol.* 2011;31(1):108–114.
52. Biederman J, Spencer TJ, Wilens TE, Weisler RH, Read SC, Tulloch SJ, on behalf of the SLI 381.304 Study Group. Long-term safety and effectiveness of mixed amphetamine salts extended release in adults with ADHD. *CNS Spectr.* 2005;10(12 suppl 20):16–25.
53. Findling RL, Childress AC, Krishnan S, McGough JJ. Long-term effectiveness and safety of lisdexamfetamine dimesylate in school-aged children with attention-deficit/hyperactivity disorder. *CNS Spectrums.* 2008;13(7):614–620.
54. Weisler R, Young J, Mattingly G, Gao J, Squires L, Adler L; on behalf of the 304 Study Group. Long-term safety and effectiveness of lisdexamfetamine dimesylate in adults with attention-deficit/hyperactivity disorder. *CNS Spectr.* 2009;14(10):573–585.
55. Mattingly GW, Weisler RH, Young J, et al. Clinical response and symptomatic remission in short- and long-term trials of lisdexamfetamine dimesylate in adults with attention-deficit/hyperactivity disorder. *BMC Psychiatry.* 2013;13:39.
56. Findling RL, Cutler AJ, Saylor K, et al. A long-term open-label safety and effectiveness trial of lisdexamfetamine dimesylate in adolescents with attention-deficit/hyperactivity disorder. *J Child Adolesc Psychopharmacol.* 2012;22(5):327–342.
57. Adler LA, Spencer TJ, Williams DW, Moore RJ, Michelson D. Long-term, open-label safety and efficacy of atomoxetine in adults with ADHD: final report of a 4-year study. *J Atten Disord.* 2008;12:248–253.
58. Kratochvil CJ, Wilens TE, Greenhill LL, et al. Effects of long-term atomoxetine treatment for young children with attention-deficit/hyperactivity disorder. *J Am Acad Child Adolesc Psychiatry.* 2006;45(8): 919–927.
59. Wilens TE, Newcorn JH, Kratochvil CJ, et al. Long-term atomoxetine treatment in adolescents with attention-deficit/hyperactivity disorder. *J Pediatr.* 2006;149(1):112–119.
60. Sallee FR, Lyne A, Wigal T, McGough JJ. Long-term safety and efficacy of guanfacine extended release in children and adolescents with attention-deficit/hyperactivity disorder. *J Child Adolesc Psychopharmacol.* 2009;19(3):215–226.
61. Rubin J, Vince B, Sallee F, Lyne A, Youcha S. Effects of long-term open-label coadministration of guanfacine extended release and stimulants on core symptoms of ADHD. Proceedings of the 163rd Annual Meeting of the American Psychiatric Association; May 22–26, 2010; New Orleans, LA, USA.
62. Goodman DW, Ginsberg L, Weisler RH, Cutler AJ, Hodgkins P. An interim analysis of the Quality of Life, Effectiveness, Safety, and Tolerability (Q.U.E.S.T.) evaluation of mixed amphetamine salts extended release in adults with ADHD. *CNS Spectr.* 2005;10(12 suppl 20): 26–34.
63. Adler LA, Spencer TJ, Milton DR, Moore RJ, Michelson D. Long-term, open-label study of the safety and efficacy of atomoxetine in adults with attention-deficit/hyperactivity disorder: an interim analysis. *J Clin Psychiatry.* 2005;66(3):294–299.
64. Biederman J, Melmed RD, Patel A, McBurnett K, Donahue J, Lyne A. Long-term, open-label extension study of guanfacine extended release in children and adolescents with ADHD. *CNS Spectr.* 2008;13(12): 1047–1055.
65. Arano I, Sugimoto T, Hamasaki T, Ohno Y. Practical application of cure mixture model for long-term censored survivor data from a withdrawal clinical trial of patients with major depressive disorder. *BMC Med Res Methodol.* 2010;10:33.
66. Leonardi CL, Kimball AB, Papp KA, et al. Efficacy and safety of ustekinumab, a human interleukin-12/23 monoclonal antibody, in patients with psoriasis: 76-week results from a randomized, double-blind, placebo-controlled trial (PHOENIX 1). *Lancet.* 2008;371(9625): 1665–1674.
67. Biederman J, Mick E, Surman C, et al. A randomized, 3-phase, 34-week, double-blind, long-term efficacy study of osmotic-release oral system-methylphenidate in adults with attention-deficit/hyperactivity disorder. *J Clin Psychopharmacol.* 2010;30(5):549–553.
68. Michelson D, Buitelaar JK, Danckaerts M, et al. Relapse prevention in pediatric patients with ADHD treated with atomoxetine: a randomized, double-blind, placebo-controlled study. *J Am Acad Child Adolesc Psychiatry.* 2004;43(7):896–904.
69. Nolan EE, Gadow KD, Sprafkin J. Stimulant medication withdrawal during long-term therapy in children with comorbid attention-deficit hyperactivity disorder and chronic multiple tic disorder. *Pediatrics.* 1999;103(4 Pt 1):730–737.
70. Brams M, Weisler R, Findling RL, et al. Maintenance of efficacy of lisdexamfetamine dimesylate in adults with attention-deficit/hyperactivity disorder: randomized withdrawal design. *J Clin Psychiatry.* 2012;73(7): 977–983.
71. Spencer TJ, Biederman J, Mick E. Attention-deficit/hyperactivity disorder: diagnosis, lifespan, comorbidities, and neurobiology. *J Pediatr Psychol.* 2007;32(6):631–642.

## Therapeutics and Clinical Risk Management

### Publish your work in this journal

Therapeutics and Clinical Risk Management is an international, peer-reviewed journal of clinical therapeutics and risk management, focusing on concise rapid reporting of clinical studies in all therapeutic areas, outcomes, safety, and programs for the effective, safe, and sustained use of medicines. This journal is indexed on PubMed Central, CAS,

Submit your manuscript here: <http://www.dovepress.com/therapeutics-and-clinical-risk-management-journal>

Dovepress

EMBASE, Scopus and the Elsevier Bibliographic databases. The manuscript management system is completely online and includes a very quick and fair peer-review system, which is all easy to use. Visit <http://www.dovepress.com/testimonials.php> to read real quotes from published authors.