

Comparative effectiveness of open versus minimally invasive sacroiliac joint fusion

Charles GT Ledonio¹

David W Polly Jr¹

Marc F Swiontkowski¹

John T Cummings Jr²

¹Department of Orthopaedic Surgery, University of Minnesota, Twin Cities, MN, ²Community Neurosurgical Care, Indianapolis, IN, USA

Background: The mainstay of sacroiliac joint disruption/degenerative sacroiliitis therapy has been nonoperative management. This nonoperative management often includes a regimen of physical therapy, chiropractic treatment, therapeutic injections, and possibly radiofrequency ablation at the discretion of the treating physician. When these clinical treatments fail, sacroiliac joint fusion has been recommended as the standard treatment. Open and minimally invasive (MIS) surgical techniques are typical procedures. This study aims to compare the perioperative measures and Oswestry Disability Index (ODI) outcomes associated with each of these techniques.

Methods: A comparative retrospective chart review of patients with sacroiliac joint fusion and a minimum of 1 year of follow-up was performed. Perioperative measures and ODI scores were compared using the Fisher's exact test and two nonparametric tests, ie, the Mann–Whitney *U* test and the Wilcoxon signed-rank test. The results are presented as percent or median with range, as appropriate.

Results: Forty-nine patients from two institutions underwent sacroiliac joint fusion between 2006 and 2012. Ten patients were excluded because of incomplete data, leaving 39 evaluable patients, of whom 22 underwent open and 17 underwent MIS sacroiliac joint fusion. The MIS group was significantly older (median age 66 [39–82] years) than the open group (median age 51 [34–74] years). Surgical time and hospital stay were significantly shorter in the MIS group than in the open group. Preoperative ODI was significantly greater in the open group (median 64 [44–78]) than in the MIS group (median 53 [14–84]). Postoperative improvement in ODI was statistically significant within and between groups, with MIS resulting in greater improvement.

Conclusion: The open and MIS sacroiliac joint fusion techniques resulted in statistically and clinically significant improvement for patients with degenerative sacroiliitis refractory to nonoperative management. However, the number of patients reaching the minimal clinically important difference and those showing overall improvement were greater in the MIS group.

Keywords: sacroiliac joint, arthrodesis, sacroiliac joint disruption, degenerative sacroiliitis

Introduction

The sacroiliac joint is a frequent source of pain in patients presenting with low back or buttock pain.^{1–13} In a recent study by Sembrano and Polly, 200 consecutive new patients were examined in a spine clinic with a chief complaint of low back pain and no prior history of spine, sacroiliac joint, or hip surgery.¹² Sixty-five percent of these patients were found to have pain attributed to the spine only, while 5% had pain attributed to the sacroiliac joint only, and 14.5% had pain attributed to both.¹²

The mainstay of therapy for disorders of the sacroiliac joint has been nonoperative treatment, including modification of activity, nonsteroidal anti-inflammatory drugs,

Correspondence: Charles GT Ledonio
Department of Orthopaedic Surgery,
University of Minnesota, 2450 Riverside
Ave South R200, Minneapolis,
MN 55454, USA
Tel +1 612 273 1177
Fax +1 612 273 7959
Email ledon001@umn.edu

physical therapy, sacroiliac joint injections, and radiofrequency ablation.^{6,13,14} The durability of these interventions is not well established. When nonoperative treatment fails, surgical arthrodesis has been the standard treatment. Many different techniques have been described for fusion of the sacroiliac joint.¹⁵

To date, the clinical studies have primarily consisted of small case series using a variety of assessments of success.¹⁶ More recently, the Oswestry Disability Index (ODI) has been used to evaluate outcomes in patients with sacroiliac joint pain.¹⁷ This tool is well validated for patients with low back pain.¹⁸ Because of the overlap between low back pain and sacroiliac joint pain, it makes intuitive sense to use it.

With the use of a common outcome tool, it is then possible to compare treatment efficacy between the different fusion techniques. While this does not provide the same level of evidence as a randomized controlled trial, it does provide some potential insight into the effect of different treatments.

The aim of this research was to compare the perioperative measures and patient-reported outcomes of two different surgical techniques for sacroiliac joint fusion. The first group was a cohort of patients who underwent arthrodesis using an open anterior ilioinguinal approach, local bone grafting, and anterior plating (open group). The second group underwent minimally invasive surgery (MIS), comprising transgluteal, iliosacral fixation with triangular, porous coated titanium implants (MIS group).

Materials and methods

This retrospective comparative study was exempted by our institutional review board. The patients underwent either open or MIS sacroiliac joint fusion by one of two spine surgeons. One orthopedic surgeon performed exclusively open operations while the neurosurgeon performed exclusively MIS procedures. All patients had sacroiliac joint disruption/degenerative sacroiliitis confirmed by specific provocative physical examination tests, diagnostic/therapeutic fluoroscopic image-guided sacroiliac joint injections using a local anesthetic and steroid, and had failed nonoperative treatment.¹⁹ Deidentified medical records for patients with a minimum of 1-year follow-up were reviewed and analyzed. A minimal clinically important difference (MCID) for the ODI¹² of 12.8 was applied to the differences between the preoperative and postoperative ODI scores for both groups. The MCID is defined as the smallest change in a treatment outcome that a patient would identify as important and has been used previously in the treatment of lumbar spine disorders.²⁰

The Fisher's exact test was used to compare categorical measures, such as sex of patient and history of prior lumbar surgery. The Shapiro–Wilk test was applied to check for normal or skewed distributions. The Mann–Whitney *U* test was used to compare measures such as patient age, surgical time, and ODI scores between groups, and the Wilcoxon signed-rank test was used to compare preoperative and postoperative ODI scores within groups. The level of significance of all tests was set at 0.05. All tests were performed using Vassar Stats.²¹ A Hochberg correction for multiple comparisons was performed.²² The results are presented as percent for categorical variables, such as male and female, or median with range for continuous variables, such as age and ODI scores.

Open anterior sacroiliac joint fusion technique

The sacroiliac joint was approached anteriorly through an ilioinguinal incision of approximately 20 cm in length. The skin and subcutaneous tissue were incised. With sharp dissection, the external oblique and gluteal fascia were exposed and an interval developed. The iliacus was elevated from the iliac fossa with a subperiosteal dissection and a retractor placed inside the iliopectineal line of the pelvis. With retraction, electrocautery was used to expose the superior capsule of the sacroiliac joint. Under headlamp illumination, the capsule was removed off the iliac and sacral portion of the sacroiliac joint with a 15 blade. A pointed Hohmann retractor was inserted on the sacral ala after careful exposure. The sacroiliac joint cartilage was resected using a series of curettes and rongeurs, removing all cartilage back to the posterior ligament and structures. A bone graft was harvested from the inner table of the ilium then morselized. All the bone graft was packed into the sacroiliac joint after predrilling both the sacral and the iliac side with multiple 2.5 mm drill holes. A three-hole 4.5 mm reconstruction plate was contoured and fixed with a fully threaded 6.5 mm cancellous screw on the sacral side and with two cortical screws on the iliac side (Figure 1). The plate was inspected to make sure there was no soft tissue under it or stretched over it. The soft tissues were allowed to fall back in place and a 1/8 inch Hemovac drain was placed into the iliac fossa. Gelfoam (Pfizer, Inc, New York, New York, USA) was placed into the bone graft harvest site. The external oblique and transversalis fascia were repaired to the gluteal fascia with multiple figure-of-eight sutures and the wound closed in layers.

Postoperatively, a program of gradual return to weight-bearing and exercise was employed. This protocol consisted



Figure 1 Postoperative radiograph of a pelvis with a three-hole reconstruction plate spanning the sacroiliac joint.

Note: The 'L' represents the patient's left.



Figure 2 Postoperative radiograph demonstrating placement of three fusion implants across the sacroiliac joint.

of toe-touch weight-bearing for 6 weeks, 4 weeks of pool therapy with progressive weight-bearing, and finally 8 weeks of land-based therapy focusing on core body strengthening.

Minimally invasive sacroiliac joint fusion

MIS sacroiliac joint fusion using a series of triangular fusion implants (iFuse implant system; SI-BONE Inc., San Jose, CA, USA) was performed in all cases by a single neurosurgeon in private practice. The patient was placed in the prone position on a radiolucent table to facilitate the use of intraoperative fluoroscopy. After general endotracheal anesthesia was administered, the patient was prepped in the normal sterile fashion. A 3 cm lateral incision was made into the buttock region and the gluteal fascia was bluntly dissected to reach the outer table of the ilium. A Steinmann pin was passed through the ilium across the sacroiliac joint lateral to the neural foramen within the sacrum. After a soft tissue protector was passed over the pin, a hand drill was used to create a pathway and decorticate the bone. Finally, a triangular broach was used to further decorticate the bone and prepare the pathway to receive the first implant. Using a pin guidance system, a total of three implants were placed. The most cephalad implant was seated within the sacral ala. The second implant was generally located above or immediately lateral to the S1 foramen, and the third between the S1 and S2 foramina (Figure 2). The incision was then irrigated and the tissue layers were closed with Vicryl and Monocryl sutures (Ethicon, Inc, Somerville, NJ, USA).

Patients were instructed to ambulate with the assistance of a walker for the first 4 weeks, after which time toe-touch ambulation was recommended for a further 4 weeks.

After 8 weeks of gradual return to full weight-bearing, the patients began 4 weeks of physical therapy.

Results

From 2006 to 2012, 49 consecutive patients from two institutions underwent either open or MIS sacroiliac joint fusion. Of these patients, ten were excluded due to incomplete records, resulting in 39 patients included in the analysis, ie, 22 in the open group and 17 in the MIS group. There was a total of 12 statistical comparisons, and a Hochberg²² correction for multiple comparisons was performed. This correction resulted in P -values ≤ 0.01 being significant. In the open group, there were 13 females and nine males with a median age of 51 (range 34–74) years, while the MIS group had eleven females and six males with a median age of 66 (range 39–82) years; the MIS patients were significantly older than the open group patients (Table 1). Of the 22 patients in the open group, eleven

Table 1 Comparative analysis of demographics and perioperative measures between groups

	Open (n=22)	MIS (n=17)	P-value
Sex, M:F ratio	9:13	6:11	0.7526 [†]
History of spine surgery	50% (11/22)	82% (14/17)	0.0490 [†]
Age, years	51 (34–74)	66 (39–82)	<0.0018*
Hospital stay, days	3 (2–6)	1 (1–2)	<0.0001*
Surgical time (minutes)	128 (73–180)	27 (18–72)	<0.0001*

Notes: Values are shown as the median (range), unless otherwise indicated. [†]Fisher's exact test; *Mann–Whitney U test. Bold P -values indicate statistical significance (corrected $P \leq 0.01$). This corrected P -value was derived using the Hochberg correction for multiple comparisons.²²

Abbreviations: MIS, minimally invasive surgery; M, male; F, female.

(50%) had a history of spine surgery, while 14 of 17 (82%) patients in the MIS group had a history of spine surgery (Table 1). The surgical time for the open group (median 128 [range 73–180] minutes) was significantly longer than that for the MIS group (median 27 [range 18–72] minutes), and the length of hospital stay for the open group (median 3 [range 2–6] days) was significantly longer than that for the MIS group (median 1 [range 1–2] days, Table 1).

ODI scores

ODI scores were collected preoperatively and at a median of 15 (range 11–18) months postoperatively in the MIS group and at a median of 13 (range 11–33) months postoperatively in the open group. The postoperative ODI scores improved significantly compared with baseline scores in both groups, from a median of 64 (range 44–78) to a median of 46 (range 10–80) in the open group (Table 2 and Figure 3) and from a median of 53 (range 14–84) to a median of 13 (range 0–30) in the MIS group (Table 2 and Figure 4). In addition, the ODI change in the MIS group (median 42 [range 0–80]) was significantly greater than that in the open group (median 9 [range –8 to 56], Table 2). Finally, the percent change was significantly greater in the MIS group (median 78% [range 0%–100%]) compared with the open group (median 6% [range –13% to 85%], Table 2).

ODI scores did not improve in all patients. In the open group, the scores were worse in four patients (18%), unchanged in three patients (14%), and improved in 15 patients (68%). In the MIS group, ODI scores were unchanged in one patient (6%) and improved in 16 patients (94%). Ten patients in the open group (45%) reached the threshold of MCID and 14 patients (82%) reached the threshold of MCID in the MIS group (Table 3).

Table 2 Comparing ODI scores between groups and within groups

	Open (n=22)	MIS (n=17)	P-value between groups
Baseline ODI (%)	64 (44–78)	53 (14–84)	0.0488*
12-month ODI (%)	46 (10–80)	13 (0–38)	<0.0001*
ODI difference	9 (–8 to 56)	42 (0–80)	<0.0008*
% change in ODI	16% (–13% to 85%)	78% (0%–100%)	<0.0001*
P-value within groups	<0.0005‡	<0.0002‡	

Notes: Values are shown as the median (range), unless otherwise indicated. *Mann–Whitney *U* test; ‡Wilcoxon signed-rank test. Bold *P*-values indicate statistical significance (corrected $P \leq 0.01$). This corrected *P*-value was derived using the Hochberg correction for multiple comparisons.²²
Abbreviations: MIS, minimally invasive surgery; ODI, Oswestry Disability Index.¹⁸

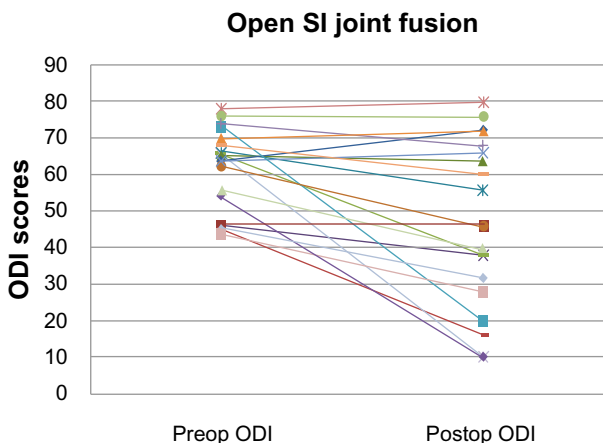


Figure 3 Plot of ODI scores per patient in open sacroiliac joint fusion group. **Abbreviations:** SI, sacroiliac; ODI, Oswestry Disability Index,¹⁸ Preop, preoperative; Postop, postoperative

There was no significant difference in preoperative ODI scores between open group patients with prior lumbar surgery (median 68 [range, 44–78]) and those without prior lumbar surgery (median 64 [range 44–73], $P > 0.114$). Similarly, there was no significant difference in postoperative ODI scores between open group patients with prior lumbar surgery (median 60 [range 10–80]) and those without prior lumbar surgery (median 44 [range 10–72], $P > 0.167$). The sample size of the MIS patients without prior lumbar surgery ($n=3$) was too small for analysis with the nonparametric Mann–Whitney *U* test, so this test was not performed.

Complications

There were no intraoperative complications in the MIS group. Postoperatively, three patients in the MIS group experienced transient trochanteric bursitis and were treated with medical management, one patient developed a hematoma at the

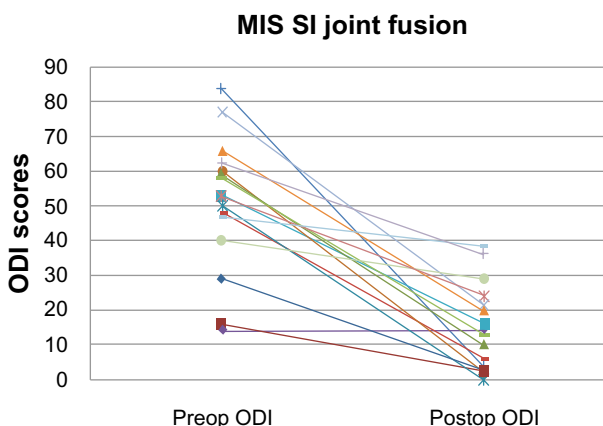


Figure 4 Plot of ODI scores per patient in the MIS SI joint fusion group. **Abbreviations:** SI, sacroiliac; ODI, Oswestry Disability Index;¹⁸ MIS, minimally invasive surgery; Preop, preoperative; Postop, postoperative.

Table 3 Comparing patients reaching MCID between groups

	Open (n=22)	MIS (n=17)	P-value
Patients reaching MCID of ≥ 12.8 points (n)	10 (45%)	14 (82%)	0.0204 [†]

Notes: [†]Fisher's exact test. This corrected P-value of ≤ 0.01 was derived using the Hochberg correction for multiple comparisons.²²

Abbreviations: MIS, minimally invasive surgery; MCID, minimal clinically important difference.

operative site, one patient had transient toe numbness of unclear relationship to sacroiliac joint fusion surgery, and one patient had a malpositioned implant that was subsequently removed. There were three complications in the open group, with one patient developing pulmonary embolism that resolved with treatment and two requiring revision due to a failed implant and nerve root irritation.

Discussion

In this study, both techniques resulted in significant clinical improvement for patients, consistent with several previously reported case series demonstrating improvement using various assessment tools.^{17,23–27} The percentage of patients who reached the threshold for an MCID of 12.8 points^{28–31} indicates that the change was not only statistically significant but also clinically significant. However, the MIS group experienced over four times greater improvement in ODI score (median 42 versus 9, respectively) and 82% of patients exceeded MCID values (versus 45% in the open group). In addition, the median percent difference in ODI was significantly greater in the MIS group than in the open group (median 78% versus 16%, respectively). Finally, the surgical times and length of hospital stay were significantly reduced in the MIS group.

Although the MIS group demonstrated several advantages compared with the open group, this information is a little harder to interpret because there is heterogeneity between the two cohorts. For example, although not statistically significant, the open group was more disabled than the MIS group at baseline, as indicated by the mean preoperative ODI scores. It is possible that the MIS technique gives slightly greater percentage improvement or it could be that patients who have greater initial disability have less improvement with surgical intervention. Propensity-matched cohorts or a randomized controlled trial (RCT) would be required to investigate this question further.

There are significant limitations to this study. The criteria for selection of these two cohorts are that there were preoperative and postoperative ODI scores available for

patients initially diagnosed with a sacroiliac joint disorder. The selection process for offering surgery to the patients was based upon the individual surgeon's experience. The patients had undergone a trial of nonoperative management and failed. Image-guided diagnostic/therapeutic sacroiliac blocks were used to confirm the sacroiliac joint as the generator of their pain. There was no prespecified threshold of relief that was used as a cutoff, although most agree that a minimum patient self-report of at least 50% pain relief for the duration of the local anesthetic is a minimum criterion. In addition, the patients were treated at two medical centers by two different surgeons, which may have contributed to the different effects of the treatments.

There are many potential confounding variables in the treatment of patients with sacroiliac joint pain. Frequently they have spine pathology that may have been treated surgically and the ODI as used does not discriminate between sacroiliac joint-based low back/buttock pain and spine-based low back/buttock pain. While there is compelling evidence that there are radiographic changes within the sacroiliac joint after lumbosacral fusion, it is not well established that these radiographic findings have a high correlation with symptoms.^{32,33} Similarly, it is not clear if patients with previous spine fusions respond to all sacroiliac joint fusion techniques in a manner similar to that of patients who have isolated sacroiliac joint pain. Poorer outcomes were reported by Slinkard et al²⁰ who used an open anterior approach and Mason et al³⁴ using a hollow modular anchorage screw MIS technique, while Rudolf,²⁶ Cummings and Capobianco,³⁵ and Sachs and Capobianco³⁶ reported similar outcomes for both patient groups after using the same triangular implant as that used in the present study.

Another limitation is that the ODI is a patient self-report of pain and limitation.³⁷ Other studies in spine pathology suggest that a patient's psychological status affects their interpretation of pain.³⁸ Similarly, workers' compensation is a well-recognized negative prognostic factor for patients with low back pain.³⁹ Presumably, this will be similar for patients with sacroiliac joint pain. Emerging data and thought also suggest that socioeconomic status affects outcomes as well.^{40,41} These were not controlled for or compared in this cohort.

Further, the postoperative treatment protocol was not prespecified and varied between the two cohorts. Even when the postoperative protocol is well specified, the authors' experience is that patient compliance is variable. Patients' willingness to comply with toe-touch weight-bearing starts to decrease when they start to feel better. The optimal postoperative regimen merits further study.

On the other hand, this study also has several strengths. For example, preoperative and postoperative ODI outcomes were available for two distinct surgical treatments used in sacroiliac joint disorders. The comparative nature of this study with its patient-reported outcomes reflects actual clinical practice at two different centers but with similar patient populations. Lastly, this study provides some evidence that sacroiliac joint fusion can result in functional improvement, regardless of technique.

Of note, cases for the open SI joint fusion group in this study is the same cohort from a recently published propensity matched study by Ledonio et al but the cases for the MIS group in this study are not.⁴²

In the future, development of standard reporting of the nonoperative treatment strategy, diagnostic strategy, and standardized reporting of patient characteristics will improve the comparability of surgical cohorts. This will allow propensity-matching and provide better insight as to whether or not a particular surgical technique is better than another.

Conclusion

In conclusion, both the open and MIS sacroiliac joint fusion techniques resulted in statistically and clinically significant improvement for patients with sacroiliac joint pain refractory to nonoperative management who had a temporary response to image-guided diagnostic/therapeutic block. However, MIS sacroiliac joint fusion resulted in at least four-fold improvement in ODI scores over the open technique (median 44 versus 9, respectively). Additionally, nearly 40% more patients in the MIS group reached MCID, and the surgical times and hospital stays were significantly reduced. Surgeons who treat sacroiliac disorders via their surgical technique of choice are encouraged to report their case series using the ODI and attempt to characterize their patient cohorts as much as possible. This will allow the different techniques to be compared in the future.

Author contributions

CGTL, DWP, MFS, and JTC Substantially contributed to the study design. CGTL and DWP collected and analyzed the outcomes, and drafted the manuscript. All authors provided critical revisions to the manuscript, and provided final approval to the published version. All authors are accountable for all aspects of the article including the accuracy and integrity.

Disclosure

JTC is a paid consultant of SI-BONE Inc. CGTL, DWP, and MFS report no conflicts of interest in this work.

References

- Slipman CW, Lipetz JS, Plataras CT, et al. Fluoroscopically guided therapeutic sacroiliac joint injections for sacroiliac joint syndrome. *Am J Phys Med Rehabil*. 2001;80:425–432.
- Slipman CW, Sterenfeld EB, Chou LH, et al. The value of radionuclide imaging in the diagnosis of sacroiliac joint syndrome. *Spine*. 1996;21:2251–2254.
- Slipman CW, Sterenfeld EB, Chou LH, et al. The predictive value of provocative sacroiliac joint stress maneuvers in the diagnosis of sacroiliac joint syndrome. *Arch Phys Med Rehabil*. 1998;79:288–292.
- Gemmell HA, Jacobson BH. Incidence of sacroiliac joint dysfunction and low back pain in fit college students. *J Manipulative Physiol Ther*. 1990;13:63–67.
- Chan KF. Musculoskeletal pain clinic in Singapore – sacroiliac joint somatic dysfunction as cause of buttock pain. *Ann Acad Med Singapore*. 1998;27:112–115.
- Bernard TN Jr, Kirkaldy-Willis WH. Recognizing specific characteristics of nonspecific low back pain. *Clin Orthop Relat Res*. 1987;217:266–280.
- Katz V, Schofferman J, Reynolds J. The sacroiliac joint: a potential cause of pain after lumbar fusion to the sacrum. *J Spinal Disord Tech*. 2003;16:96–99.
- Kirkaldy-Willis WH. Five common back disorders: how to diagnose and treat them. *Geriatrics*. 1978;33:32–33.
- Kirkaldy-Willis WH, Hill RJ. A more precise diagnosis for low-back pain. *Spine*. 1979;4:102–109.
- Maigne JY, Aivaliklis A, Pfefer F. Results of sacroiliac joint double block and value of sacroiliac pain provocation tests in 54 patients with low back pain. *Spine*. 1996;21:1889–1892.
- Schwarzer AC, Aprill CN, Bogduk N. The sacroiliac joint in chronic low back pain. *Spine*. 1995;20:31–37.
- Sembrano JN, Polly DW Jr. How often is low back pain not coming from the back? *Spine*. 2009;34:E27–E32.
- Bernard TN Jr, Cassidy JD. *The Sacroiliac Joint Syndrome: Pathophysiology, Diagnosis and Management*. New York, NY, USA: Raven Press; 1991.
- Spiker WR, Lawrence BD, Raich AL, et al. Surgical versus injection treatment for injection-confirmed chronic sacroiliac joint pain. *Evid Based Spine Care J*. 2012;3:41–53.
- Stark JG, Fuentes JA, Fuentes TI, et al. The history of sacroiliac joint arthrodesis: a critical review and introduction of a new technique. *Curr Orthop Pract*. 2011;22:545–557.
- Ackerman SPD, Kim E, Knight T, Yerby S. What is the frequency of minimally invasive sacroiliac joint fusion annually in the United States? Paper presented at the 8th Interdisciplinary World Congress on Low Back and Pelvic Pain, October 27–31, 2013, Dubai.
- Al-Khayer A, Hegarty J, Hahn D, et al. Percutaneous sacroiliac joint arthrodesis: a novel technique. *J Spinal Disord Tech*. 2008;21:359–363.
- Djurasovic M, Glassman SD, Dimar JR 2nd, et al. Does fusion status correlate with patient outcomes in lumbar spinal fusion? *Spine*. 2011;36:404–409.
- Laslett M, Aprill CN, McDonald B. Provocation sacroiliac joint tests have validity in the diagnosis of sacroiliac joint pain. *Arch Phys Med Rehabil*. 2006;87:874.
- Slinkard N, Agel J, Swiontkowski MF. Documentation of outcomes for sacroiliac joint fusion: does prior spinal fusion influence the outcome? *Eur Spine J*. 2013;22:2318–2324.
- Vassarstats.net [homepage on the Internet]. Richard Lowry, Vassar College, Poughkeepsie, NY; 1998–2014. Available from www.vassarstats.net. Last accessed January 31, 2014.
- Hochberg Y. A sharper Bonferroni procedure for multiple tests of significance. *Biometrika*. 1988;75:800–802.
- Buchowski JM, Kebaish KM, Sinkov V, et al. Functional and radiographic outcome of sacroiliac arthrodesis for the disorders of the sacroiliac joint. *Spine J*. 2005;5:520–528.

24. Khurana A, Guha AR, Mohanty K, et al. Percutaneous fusion of the sacroiliac joint with hollow modular anchorage screws: clinical and radiological outcome. *J Bone Joint Surg Br.* 2009;91:627–631.
25. Rudolf L. Sacroiliac joint arthrodesis – MIS technique with titanium implants: report of the first 50 patients and outcomes. *Open Orthop J.* 2012;6:495–502.
26. Rudolf L. MIS fusion of the SI joint: Does prior lumbar spinal fusion affect patient outcomes? *Open Orthop J.* 2013;7:163–168.
27. Wise CL, Dall BE. Minimally invasive sacroiliac arthrodesis: outcomes of a new technique. *J Spinal Disord Tech.* 2008;21:579–584.
28. Copay AG, Glassman SD, Subach BR, et al. Minimum clinically important difference in lumbar spine surgery patients: a choice of methods using the Oswestry Disability Index, Medical Outcomes Study questionnaire Short Form 36, and pain scales. *Spine J.* 2008;8:968–974.
29. Gatchel RJ, Mayer TG, Chou R. What does/should the minimum clinically important difference measure? A reconsideration of its clinical value in evaluating efficacy of lumbar fusion surgery. *Clin J Pain.* 2012;28:387–397.
30. Lauridsen HH, Hartvigsen J, Manniche C, et al. Responsiveness and minimal clinically important difference for pain and disability instruments in low back pain patients. *BMC Musculoskelet Disord.* 2006;7:82.
31. Carreon LY, Bratcher KR, Canan CE, et al. Differentiating minimum clinically important difference for primary and revision lumbar fusion surgeries. *J Neurosurg Spine.* 2012;18:102–106.
32. Elgafy H, Semaan HB, Ebraheim NA, et al. Computed tomography findings in patients with sacroiliac pain. *Clin Orthop.* 2001;382:112–118.
33. Ha KY, Lee JS, Kim KW. Degeneration of sacroiliac joint after instrumented lumbar or lumbosacral fusion: a prospective cohort study over five-year follow-up. *Spine.* 2008;33:1192–1198.
34. Mason LW, Chopra I, Mohanty K. The percutaneous stabilisation of the sacroiliac joint with hollow modular anchorage screws: a prospective outcome study. *Eur Spine J.* 2013;22(10):2325–2331.
35. Cummings J Jr, Capobianco RA. Minimally invasive sacroiliac joint fusion: one-year outcomes in 18 patients. *Ann Surg Innov Res.* 2013;7:12.
36. Sachs D, Capobianco R. Minimally invasive sacroiliac joint fusion: one-year outcomes in 40 patients. *Adv Orthop.* 2013;2013:536128.
37. Carreon LY, Glassman SD, Howard J. Fusion and nonsurgical treatment for symptomatic lumbar degenerative disease: a systematic review of Oswestry Disability Index and MOS Short Form-36 outcomes. *Spine J.* 2008;8:747–755.
38. Pollock R, Lakkol S, Budithi C, et al. Effect of psychological status on outcome of posterior lumbar interbody fusion surgery. *Asian Spine J.* 2012;6:178–182.
39. Webster BS, Verma S, Pransky GS. Outcomes of workers' compensation claimants with low back pain undergoing intradiscal electrothermal therapy. *Spine.* 2004;29:435–441.
40. Campbell P, Wynne-Jones G, Muller S, et al. The influence of employment social support for risk and prognosis in nonspecific back pain: a systematic review and critical synthesis. *Int Arch Occup Environ Health.* 2012;86:119–137.
41. Mroz TE, Norvell DC, Ecker E, et al. Fusion versus nonoperative management for chronic low back pain: do sociodemographic factors affect outcome? *Spine.* 2011;36:S75–S86.
42. Ledonio CG, Polly DW Jr, Swiontkowski MF. Minimally invasive versus open sacroiliac joint fusion: are they similarly safe and effective? *Clin Orthop Relat Res.* June 2014;472(6):1831–1838.

Medical Devices: Evidence and Research

Publish your work in this journal

Medical Devices: Evidence and Research is an international, peer-reviewed, open access journal that focuses on the evidence, technology, research, and expert opinion supporting the use and application of medical devices in the diagnosis, treatment and management of clinical conditions and physiological processes. The identification of novel

Submit your manuscript here: <http://www.dovepress.com/medical-devices-evidence-and-research-journal>

Dovepress

devices and optimal use of existing devices which will lead to improved clinical outcomes and more effective patient management and safety is a key feature. The manuscript management system is completely online and includes a quick and fair peer-review system. Visit <http://www.dovepress.com/testimonials.php> to read real quotes from authors.