

Clinical significance and association of *RUNX3* hypermethylation frequency with colorectal cancer: a meta-analysis

Wei-Ping Mu
Jian Wang
Qiong Niu
Ning Shi
Hai-Feng Lian

Department of Gastroenterology,
Affiliated Hospital of Binzhou
Medical College, Binzhou,
People's Republic of China

Background: The *RUNX* family, which is composed of *RUNX1*, *RUNX2*, and *RUNX3*, is a sequence-specific transcription factor family and is closely involved in a variety of cellular processes including development, differentiation, participation in the regulation of *p53*-dependent DNA damage response and/or tumorigenesis. Emerging evidence indicates that *RUNX3* is a candidate tumor suppressor in several types of human tumors including colorectal cancer (CRC). However, the correlation of *RUNX3* inactivation with CRC remains unclear. In the study reported here, we conducted a systematic review and meta-analysis to quantitatively evaluate the effects of *RUNX3* hypermethylation/expression on the incidence of CRC.

Methods: A detailed search of the literature was made using Medline® and Web of Science for related research publications written in English. The methodological quality of the studies was also evaluated. The data were extracted and assessed by two reviewers independently. Analyses of the pooled data were performed. Odds ratios (ORs) and hazard ratios were calculated and summarized, respectively.

Results: A final analysis of 1,427 CRC patients from eleven eligible studies was performed. We observed that *RUNX3* hypermethylation was significantly higher in CRC than in normal colorectal mucosa. The pooled OR from six studies comprising 289 CRC and 188 normal colorectal mucosa was OR =0.07 (confidence interval [CI] =0.03–0.18, $P<0.00001$). Aberrant *RUNX3* hypermethylation/expression was significantly higher in advanced CRC than in early staged CRC (OR =0.54, CI =0.41–0.71, $P<0.0001$). Aberrant *RUNX3* hypermethylation/expression was also significantly higher in microsatellite instability (MSI)-positive CRC than in MSI-negative CRC (OR =0.44, CI =0.3–0.66, $P<0.0001$). In addition, CRC patients with *RUNX3* hypermethylation or lacking *RUNX3* protein expression had a lower survival rate than those without *RUNX3* hypermethylation or those who did not express *RUNX3* protein.

Conclusion: The results of this meta-analysis suggest that *RUNX3* hypermethylation is associated with an increased risk of CRC, increased risk of progression of CRC, and a poorer CRC survival rate. *RUNX3* hypermethylation, which induces the inactivation of *RUNX3* gene, plays an important role in colorectal carcinogenesis, high levels of MSI, as well as CRC progression and development.

Keywords: methylation, tumor-suppressor gene, odds ratio, hazard ratio, microsatellite instability

Correspondence: Wei-Ping Mu
Department of Gastroenterology,
Affiliated Hospital of Binzhou Medical
College, No 661, Yellow-River
Second Street, Binzhou 256600,
People's Republic of China
Tel +86 543 3256725
Email weipingmu@yeah.net

Introduction

Colorectal cancer (CRC) is one of the most malignant types of cancers. In the USA and Europe, CRC is the second most frequent cancer after lung cancer that leads to death.¹ The incidence of CRC in the People's Republic of China has been reported to increase annually and will continue to rise in the next few years.² Currently, there are

approximately 1.25 million patients diagnosed with CRC, and more than 600,000 patients will die from this disease every year worldwide.³ Surgical resection can be performed to remove the tumor if no lymph-node or distant metastasis is present, but the recurrence rate after surgery remains high.^{4,5} Therefore, investigation of the mechanism of initiation and progression and identification of prognostic markers are still needed in the treatment of CRC.

A proper DNA damage response has been considered a critical barrier to genetic alterations, preventing tumor initiation and progression.^{6,7} The runt-domain-related (*RUNX*) family of genes, *RUNX1*, *RUNX2*, and *RUNX3*, have recently come to prominence because of their protein roles as essential regulators of cell fate in development and their paradoxical effects in cancer, as well as in the regulation of p53-dependent DNA damage response and/or tumorigenesis.^{8–10} The *RUNX3* gene is one of the most critical members of the runt-domain family and has a crucial role in the regulation of cell proliferation and cell death by apoptosis, and in angiogenesis, cell adhesion, and invasion.^{11,12} The *RUNX3* gene, localized to chromosome 1p36, a region that exhibits frequent loss-of-heterozygosity events in colon, gastric, breast, and ovarian cancers, is considered a tumor-suppressor gene involved in the transforming growth factor beta (TGF- β) signaling pathway.¹³ Its precise function has been intensively studied in several tumors, with upregulation of the induction of cell-cycle arrest, apoptosis, and downregulation of cyclin D1 expression.^{14–18} Inactivation of *RUNX3* by promoter methylation (hypermethylation) has been found to play an important role in colorectal epithelial tumorigenesis.^{19–21} However, its role in CRC and its clinical significance have not been thoroughly investigated. In this study, we review and update the published clinical investigations regarding the effect of *RUNX3* on patients with CRC.

Methods

Search strategy and selection criteria

We searched PubMed, Embase, and ISI Web of Knowledge to identify studies from January 1, 1998 to December 2013 using the search terms “colorectal” and “cancer” or “tumor” or “neoplasm” or “carcinoma”, “methylation”, and “*RUNX3*”. We also manually searched the reference lists of the retrieved articles and reviews for additional articles. Although our search did not initially have language limits, for the full-text reading and final evaluation, we reviewed only studies published in English. Conference abstracts were not selected for our analysis due to their containing insufficient data. After the exclusion of irrelevant and/or redundant publications from

the different databases, the full-text versions of the remaining papers were evaluated against inclusion and exclusion criteria (see the following paragraph), their reference lists, and/or bibliographies searched for additional relevant articles. All searched data were retrieved. To avoid duplication, if the same patient population was reported in several publications, the most complete study was chosen for review.

The three inclusion criteria were as follows: 1) *RUNX3* methylation and/or expression evaluated in the circulation and/or primary CRC tissues, 2) research revealed the relationship between *RUNX3* methylation and/or expression and CRC clinicopathological parameters and prognosis, 3) *RUNX3* methylation and/or expression examined by polymerase chain reaction (PCR), 4) sufficient information provided to estimate hazard ratio (HR) concerning overall survival (OS) and 95% confidence interval (CI). The two exclusion criteria were: 1) letters, reviews, case reports, conference abstracts, editorials, expert opinion; and 2) all in vitro/ex vivo studies. Studies on cell lines and human xenografts were also excluded.

Data extraction and methodological assessment

Two authors (WM, JW) independently reviewed and extracted the data from eligible studies. Disagreements were resolved by discussion and consensus. Two authors (QN, NS) reviewed all of articles that fitted the inclusion criteria. The following information was recorded for each study: the first author's name, year of publication, sample source, number of cases, clinicopathological parameters, cancer tumor-node-metastasis stage, methylation detection method, methylation rate and/or expression, and follow-up. Data for study characteristics and clinical responses were summarized and transferred into table format. The heterogeneity of investigation was evaluated to determine whether the data from the various studies could be analyzed in a meta-analysis.

For the methodological evaluation of the studies, three investigators (WM, JW, and HL) read each publication independently, and assessed and scored them according to Reporting Recommendations for Tumor Marker Prognostic Studies (REMARK) guidelines and the European Lung Cancer Working Party quality scale.^{22,23} The three readers provided the quality scores and compared them, then reached a consensus value for each item.

Statistical analysis

Analysis was conducted using STATA (v 12.0; StataCorp LP, TX, USA) and Review Manager (v 5.2; The Cochrane

Collaboration, Oxford, UK) software. The pooled frequency of *RUNX3* hypermethylation and 95% CI were estimated. The frequency of *RUNX3* hypermethylation in different tumor characteristics was compared. Heterogeneity among studies was evaluated with Cochran's Q test²⁴ and the I^2 statistic.^{25,26} When heterogeneity was not an issue (I^2 values <50%), a fixed-effects model was used to calculate parameters. If there was substantial heterogeneity (I^2 values \geq 50%), a random-effects model was used to pool data and attempt to identify potential sources of heterogeneity based on subgroup analyses. The pooled OR was estimated for the association between *RUNX3* hypermethylation and clinicopathological features. *P*-values less than 0.05 were considered statistically significant.

Publication bias was assessed using a method reported by Egger et al.²⁷ We also explored reasons for statistical heterogeneity using meta-regression, subgroup analysis, and sensitivity analysis. The analysis of meta-regression and publication bias was performed using STATA (v 10.0; StataCorp LP).

Results

Identification of relevant studies

Sixty-seven publications were identified using the described search method. Of these, 56 were excluded due to being

laboratory studies, non-original articles (ie, reviews), or irrelevant to the current analysis. Eventually, eleven studies were included in the final meta-analysis,^{19–21,28–35} as shown in Figure 1.

Study characteristics

The eleven studies eligible for meta-analysis were published between 2004 and 2013, and between them reported on a total of 1,427 CRC patients from Japan, Singapore, Brazil, Norway, and the USA. The basic characteristics of these patients are summarized in Table 1.

Correlation of *RUNX3* hypermethylation and expression with clinicopathological features

Inactivation of *RUNX3* through hypermethylation in CRC and adenoma

The loss of *RUNX3* messenger RNA (mRNA) and protein expression was found to be statistically correlated with the promoter hypermethylation in several types of cancer including CRC.^{20,30,36–39} *RUNX3* hypermethylation was significantly higher in CRC than in normal colorectal mucosa. The pooled OR from six studies of a total of 289 CRC and 188 normal colorectal mucosa, as shown in Figure 2A (OR=0.07, CI=0.03–0.18, $P<0.00001$) indicates that *RUNX3*

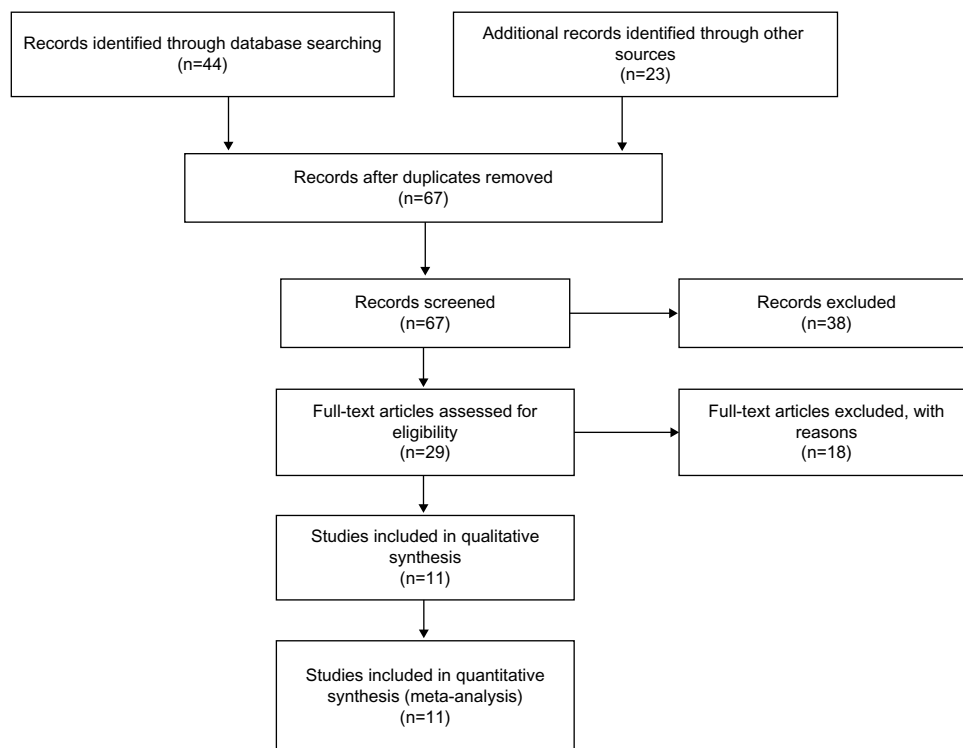


Figure 1 Flowchart of study selection.

Table 1 Basic characteristics of the included studies

Study	Patients, N	Method(s)	Primary aim	Methylation site	<i>RUNX3</i> expression
Imamura et al ¹⁹	92	MSP	Determination of the methylation status of the <i>RUNX3</i> gene and correlation of the results with the clinicopathological features of affected patients	Promoter, CpG islands	–
Goel et al ²⁰	91	MSP, RT-PCR	Determination of <i>RUNX3</i> expression and the frequency of <i>RUNX3</i> promoter hypermethylation	Promoter, CpG islands	+
Ku al ²¹	87	RT-PCR, MSP	Determination of whether there is promoter methylation of the <i>RUNX3</i> gene in CRC	Promoter, CpG islands	+
Ahlquist et al ²⁸	25	MSP	Pinpointing of the epigenetic markers that can discriminate between nonmalignant and malignant tissue from the large bowel	Promoter, CpG islands	–
Soong et al ²⁹	849	Immunohistochemistry	Determination of the clinical significance of <i>RUNX3</i> expression in a large series of CRC patients		+
Ito et al ³⁰	48	MSP, RT-PCR	Investigation of the possible roles of <i>RUNX3</i> in regulating the Wnt pathway and in intestinal tumorigenesis	Promoter, CpG islands	+
Hibi and Nakao ³¹	59	MSP	Determination of whether <i>RUNX3</i> methylation status is correlated with the clinicopathological features of the affected patients	Promoter, CpG islands	–
Ogino et al ³²	30	MethylLight	Determination of whether CpG island methylation may predict poor survival in CRC	Promoter, CpG islands	+
Tan et al ³³	17	MSP	Determination of the promoter status of <i>RUNX3</i> in CRC	Promoter, CpG islands	–
Silva et al ³⁴	10	Methyl-Profiler™ PCR Array*	Identification of useful epigenetic markers for noninvasive CRC screening	Promoter, CpG islands	–
Nishio et al ³⁵	119	MSP	Analysis of <i>RUNX3</i> promoter hypermethylation as a novel tumor marker	Promoter, CpG islands	–

Note: *Qiagen NV, Venlo, the Netherlands.

Abbreviations: CRC, colorectal cancer; MSP, methylation-specific polymerase chain reaction; PCR, polymerase chain reaction; RT-PCR, reverse transcription followed by conventional polymerase chain reaction.

inactivation through hypermethylation plays an important role in the pathogenesis of CRC. In addition, *RUNX3* hypermethylation was found to occur in colorectal adenoma but slightly less so than in CRC, as shown in Figure 2B.

Role of *RUNX3* hypermethylation in CRC development

We analyzed 1,059 CRC patients pooled from three studies to assess whether the aberrant *RUNX3* hypermethylation/expression in CRC was associated with advanced stage. As shown in Figure 3, aberrant *RUNX3* hypermethylation/expression was significantly higher in advanced CRC compared with in early staged CRC (OR =0.54, CI =0.41–0.71, $P<0.0001$). These results suggest that epigenetic silencing of *RUNX3* gene expression by promoter hypermethylation

may play an important role in CRC progression and development.

Correlation of *RUNX3* hypermethylation/expression with microsatellite instability (MSI) in CRC

We also examined the data for 1,039 CRC patients pooled from four studies to assess whether the aberrant *RUNX3* hypermethylation/expression in CRC was associated with MSI. As shown in Figure 4, aberrant *RUNX3* hypermethylation/expression was significantly higher in MSI-positive CRC compared with in MSI-negative CRC (OR =0.44, CI =0.3–0.66, $P<0.0001$). These results suggest that epigenetic silencing of *RUNX3* gene expression by promoter hypermethylation may play an important role in high levels of MSI.

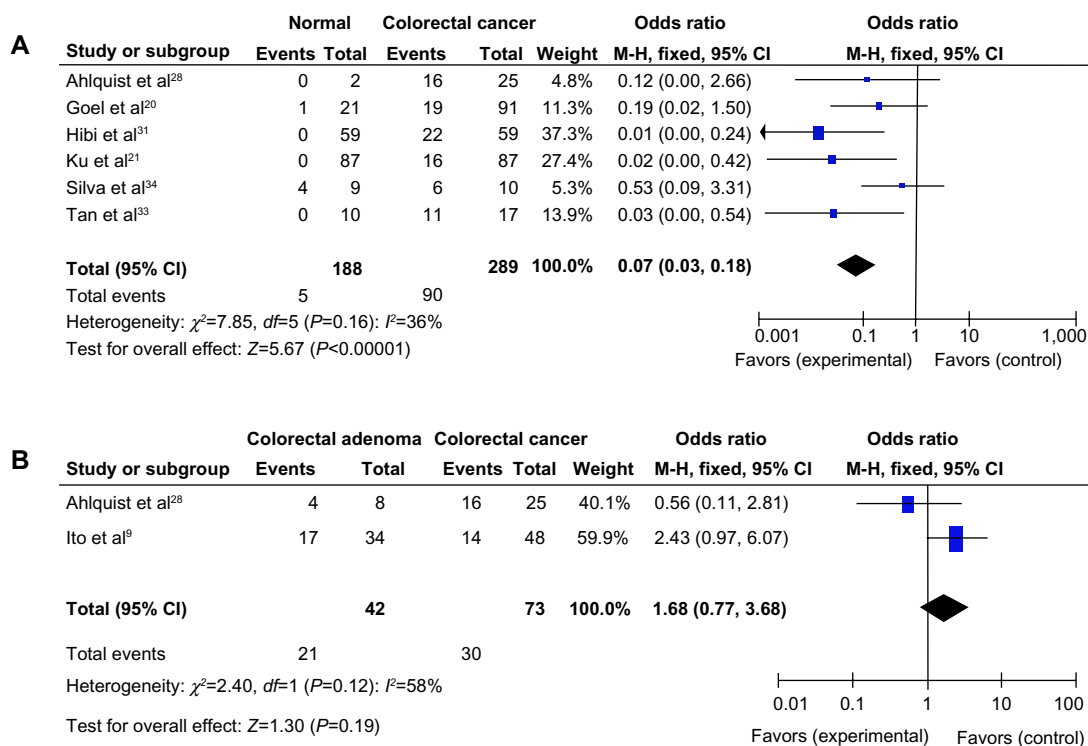


Figure 2 (A) Pooled odds ratios (ORs) from six studies of 289 colorectal cancer (CRC) and 188 normal colorectal mucosa.^a **(B)** The pooled OR from two studies including 73 CRC and 42 colorectal adenoma.^b

Notes: ^aOR =0.07, CI =0.00–0.54, $P<0.00001$; ^bOR =1.68, CI =0.77–3.68, $P=0.19$.

Abbreviations: CI, confidence interval; M-H, Mantel-Haenszel; OR, odds ratio; *df*, degrees of freedom.

RUNX3 hypermethylation/expression as a prognostic factor for CRC

Only two studies estimated the relationship between OS and RUNX3 hypermethylation/expression in CRC. Ogino et al showed that CRC patients with RUNX3 hypermethylation had a lower 1-year survival than those without RUNX3 hypermethylation ($P<0.001$).³² Soong et al

observed that nuclear RUNX3 expression was associated with significantly better patient survival than no nuclear RUNX3 expression ($P=0.025$).²⁹ The pooled HR for OS showed that RUNX3 hypermethylation or decreased RUNX3 expression was associated with worse survival in CRC patients, as shown in Figure 5 (HR =0.44, 95% CI =0.27–0.70, $P=0.0006$).

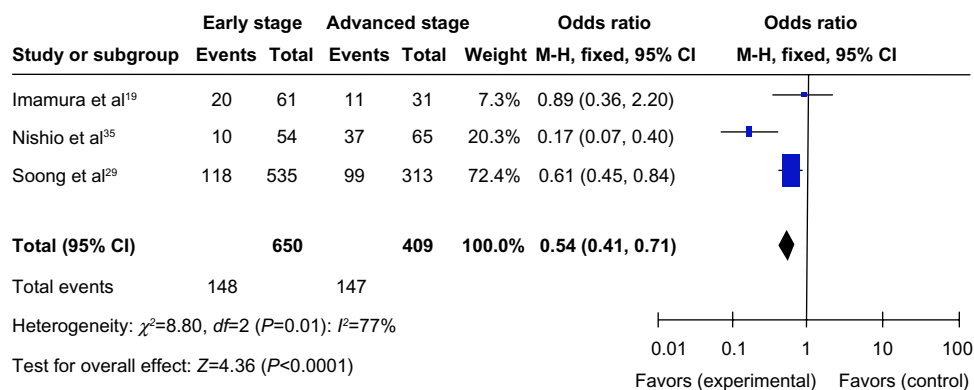


Figure 3 A total of 1,059 colorectal cancer (CRC) patients pooled in three studies. Aberrant RUNX3 hypermethylation/expression was significantly higher in advanced CRC than in early staged CRC.*

Notes: *OR =0.54, CI =0.41–0.71, $P<0.0001$.

Abbreviations: CI, confidence interval; M-H, Mantel-Haenszel; OR, odds ratio; *df*, degrees of freedom.

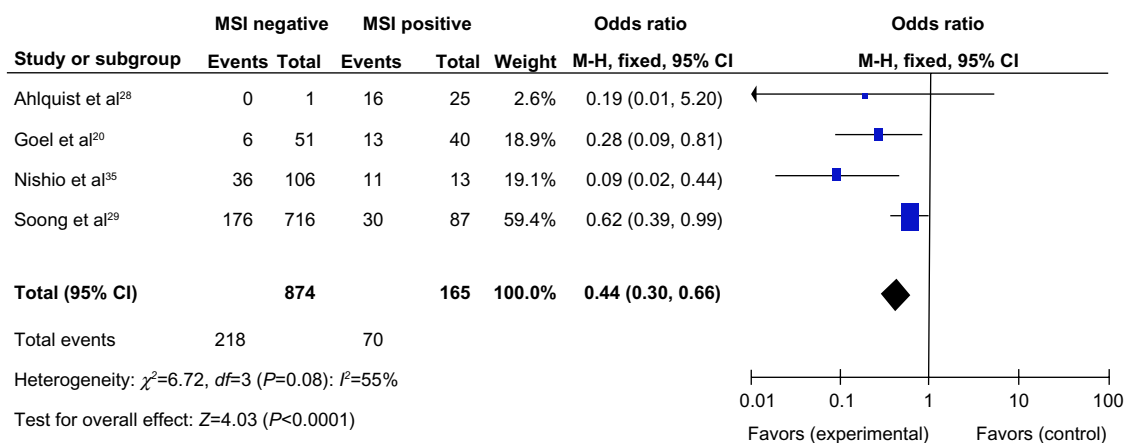


Figure 4 A total of 1,039 colorectal cancer (CRC) patients pooled in four studies. Aberrant *RUNX3* hypermethylation/expression was significantly higher in microsatellite instability (MSI)-positive CRC than in MSI-negative CRC.*

Notes: *OR =0.44, CI =0.30–0.66, $P<0.0001$.

Abbreviations: CI, confidence interval; M-H, Mantel-Haenszel; OR, odds ratio; df , degrees of freedom.

Sensitivity analyses and publication bias

A “sensitivity analysis”, in which one study was removed at a time, was conducted to assess the stability of the results. The pooled ORs and HRs were not significantly changed, indicating the stability of our analyses. The funnel plots were largely symmetrical (Figure 6), suggesting there were no publication biases in our meta-analysis of *RUNX3* methylation/expression and clinicopathological features.

Discussion

“Epigenetics” is the study of heritable and age-related modifications of the genome that occur without a change in the primary DNA sequence. Epigenetic alterations, particularly aberrant DNA methylation, one of the best-characterized epigenetic modifications, contribute to tumor initiation and progression.^{40,41} *RUNX3* belongs to the runt-domain family of transcriptional factors, and its inactivation by promoter hypermethylation plays an important role in the normal development of, and tumorigenesis in, several types of tumors

including CRC.^{14,42–53} To date, there have been some studies describing the precise expression, prognostic impact, and methylation status of *RUNX3* in CRC; however, the role of *RUNX3* inactivation in CRC and *RUNX3* inactivation have not been thoroughly investigated. We conducted the meta-analysis to evaluate the correlation of *RUNX3* hypermethylation/low expression with CRC. Analysis of the pooled data showed that: CRC had a higher hypermethylation OR than normal colorectal mucosa; aberrant *RUNX3* hypermethylation/expression was significantly higher in advanced CRC compared with in early staged CRC, indicating that epigenetic silencing of *RUNX3* gene expression by promoter hypermethylation may play an important role in CRC progression and development; and aberrant *RUNX3* hypermethylation/expression was significantly higher in MSI-positive CRC compared with in MSI-negative CRC. In addition, CRC patients with *RUNX3* hypermethylation or lacking *RUNX3*-protein expression had a lower survival rate than those without *RUNX3* hypermethylation or with *RUNX3*-protein

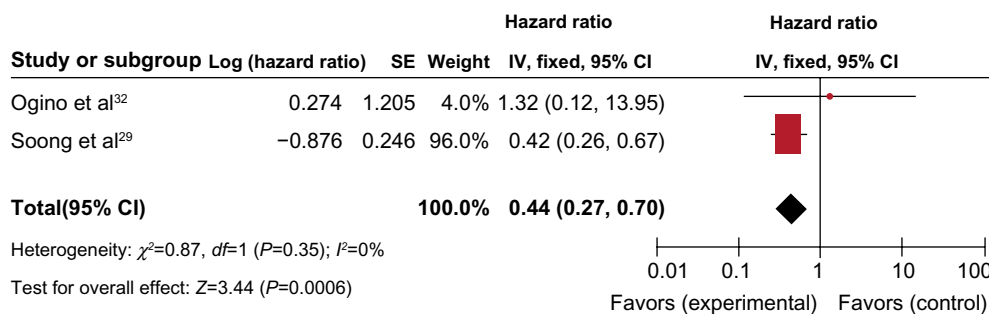


Figure 5 Two studies estimated the relationship between overall survival (OS) and *RUNX3* hypermethylation/expression in colorectal cancer (CRC). The pooled hazard ratios (HRs) for OS showed that *RUNX3* hypermethylation or decreased *RUNX3* expression was associated with worse survival in CRC patients.*

Notes: *HR =0.44, 95% CI =0.27–0.70, $P=0.0006$.

Abbreviations: CI, confidence interval; M-H, Mantel-Haenszel; HR, hazards ratio; df , degrees of freedom.

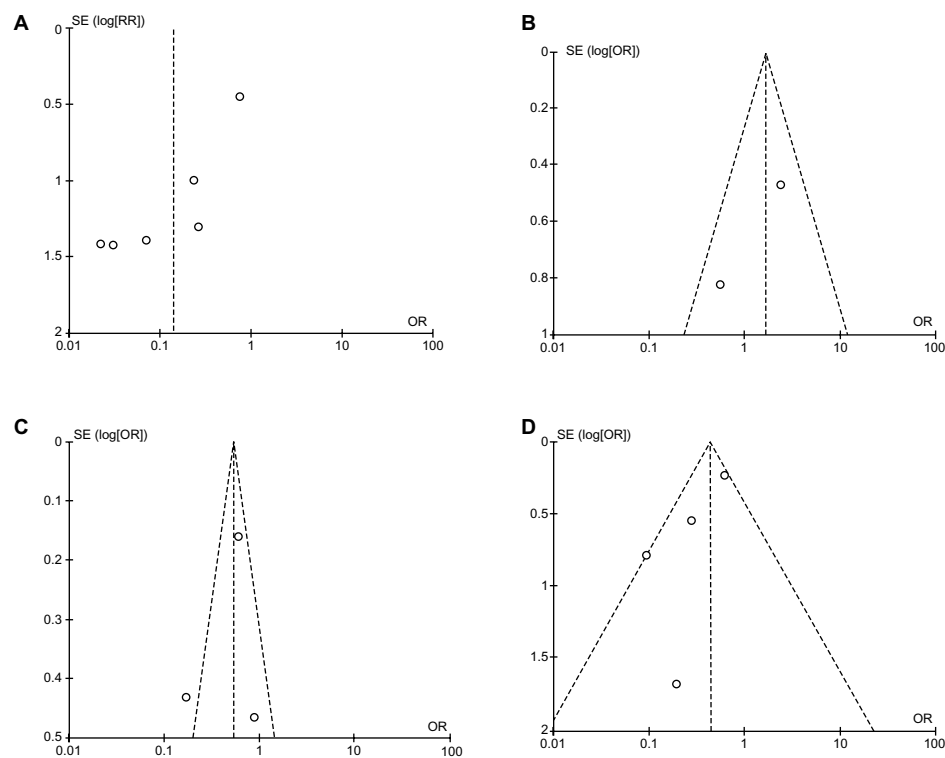


Figure 6 Funnel plots, which are largely symmetrical, suggesting there were no publication biases in the meta-analysis of *RUNX3* hypermethylation/expression and clinicopathological features. **(A)** Funnel plot from six studies comparing colorectal cancer (CRC) with normal colorectal mucosa. **(B)** Funnel plot from two studies comparing CRC and colorectal adenoma. **(C)** Funnel plot from three studies comparing different stages of CRC. **(D)** Funnel plot from four studies comparing microsatellite instability (MSI)-positive and MSI-negative CRC.

Notes: X axis, value of OR; Y axis, SEs multiplied by log scale of OR.

Abbreviations: OR, odds ratio; SE, standard error.

expression. Progression from colorectal adenoma to CRC appears to mirror the accumulation of genetic abnormalities, suggesting a stepwise progression of genetic changes. In fact, the hypermethylation of several tumor suppressors has been reported in colorectal adenoma.^{54–56} Combining *RUNX3* with other genes to develop several gene markers will be a good strategy for risk stratification to predict initial carcinogenesis and neoplastic progression, including in CRC.⁵⁴

RUNX3 exerts pleiotropic effects during tumor suppression. *RUNX3* inhibits the oncogenic Wnt signaling pathway via the formation of a complex with the TCF4- β -catenin complex and hampers it from binding to target genes such as *c-myc* and *cyclin D1*.^{42,57} *RUNX3* interacts with SMAD3/SMAD4 to activate TGF- β -dependent proliferation inhibition and apoptosis by activation of p21 and Bim. Although only two studies estimated the relationship between OS and *RUNX3* hypermethylation/expression in CRC, both showed very similar results. Ogino et al showed that CRC patients with *RUNX3* hypermethylation had lower 1-year survival than those without *RUNX3* hypermethylation ($P < 0.001$).³² Soong et al observed that nuclear *RUNX3* expression was associated with significantly better patient

survival than no nuclear *RUNX3* expression ($P = 0.025$).²⁹ In addition, detection of *RUNX3* methylation status may predict treatment effects among CRC patients who receive fluorouracil-based and irinotecan-based chemotherapy.³²

Consistent results were shown in sensitivity analyses, and no evidence of publication bias was found. This study has several potential limitations. First, the possibility of information and selection biases and unidentified confounders could not be completely excluded, because all of the included studies were observational. Second, the search strategy was restricted to articles published in English. Articles with potentially high-quality data published in other languages were not included because of anticipated difficulties in obtaining accurate medical translation. Hence, caution should be taken in interpreting our findings among the general population.

Disclosure

The authors declare no conflicts of interest in this work.

References

1. Jemal A, Center MM, DeSantis C, Ward EM. Global patterns of cancer incidence and mortality rates and trends. *Cancer Epidemiol Biomarkers Prev*. 2010;19(8):1893–1907.

2. Dai Z, Zheng RS, Zou XN, et al. [Analysis and prediction of colorectal cancer incidence trend in China.] *Zhonghua Yu Fang Yi Xue Za Zhi*. 2012;46(7):598–603. Chinese.
3. International Agency for Research on Cancer (IARC). *Globocan 2008: Colorectal Cancer Fact Sheet 2008*. Lyon: IARC; 2008. Available from: <http://globocan.iarc.fr/factsheets/cancers/colorectalsp>.
4. Weitz J, Koch M, Debus J, Höhler T, Galle PR, Büchler MW. Colorectal cancer. *Lancet*. 2005;365(9454):153–165.
5. McKeown E, Nelson DW, Johnson EK, et al. Current Approaches and Challenges for Monitoring Treatment Response in Colon and Rectal Cancer. *J Cancer*. 2014;5(1):31–43.
6. Solier S, Zhang YW, Ballestrero A, Pommier Y, Zoppoli G. DNA damage response pathways and cell cycle checkpoints in colorectal cancer: current concepts and future perspectives for targeted treatment. *Curr Cancer Drug Targets*. 2012;12(4):356–371.
7. Duthie SJ. Folate and cancer: how DNA damage, repair and methylation impact on colon carcinogenesis. *J Inherit Metab Dis*. 2011;34(1):101–109.
8. Ozaki T, Nakagawara A, Nagase H. RUNX Family Participates in the Regulation of p53-Dependent DNA Damage Response. *Int J Genomics*. 2013;2013:271347.
9. Ito Y. RUNX genes in development and cancer: regulation of viral gene expression and the discovery of RUNX family genes. *Adv Cancer Res*. 2008;99:33–76.
10. Blyth K, Cameron ER, Neil JC. The RUNX genes: gain or loss of function in cancer. *Nat Rev Cancer*. 2005;5(5):376–387.
11. Subramaniam MM, Chan JY, Yeoh KG, Quek T, Ito K, Salto-Tellez M. Molecular pathology of RUNX3 in human carcinogenesis. *Biochim Biophys Acta*. 2009;1796(2):315–331.
12. Lund AH, van Lohuizen M. RUNX: a trilogy of cancer genes. *Cancer Cell*. 2002;1(3):213–215.
13. Levanon D, Negreanu V, Bernstein Y, Bar-Am I, Avivi L, Groner Y. AML1, AML2, and AML3, the human members of the runt domain gene-family: cDNA structure, expression, and chromosomal localization. *Genomics*. 1994;23(2):425–432.
14. Shiraha H, Nishina S, Yamamoto K. Loss of runt-related transcription factor 3 causes development and progression of hepatocellular carcinoma. *J Cell Biochem*. 2011;112(3):745–749.
15. Li QL, Ito K, Sakakura C, et al. Causal relationship between the loss of RUNX3 expression and gastric cancer. *Cell*. 2002;109(1):113–124.
16. Chi XZ, Yang JO, Lee KY, et al. RUNX3 suppresses gastric epithelial cell growth by inducing p21(WAF1/Cip1) expression in cooperation with transforming growth factor {beta}-activated SMAD. *Mol Cell Biol*. 2005;25(18):8097–8107.
17. Wei D, Gong W, Oh SC, et al. Loss of RUNX3 expression significantly affects the clinical outcome of gastric cancer patients and its restoration causes drastic suppression of tumor growth and metastasis. *Cancer Res*. 2005;65(11):4809–4816.
18. Chen LF. Tumor suppressor function of RUNX3 in breast cancer. *J Cell Biochem*. 2012;113(5):1470–1477.
19. Imamura Y, Hibi K, Koike M, et al. RUNX3 promoter region is specifically methylated in poorly-differentiated colorectal cancer. *Anticancer Res*. 2005;25(4):2627–2630.
20. Goel A, Arnold CN, Tassone P, et al. Epigenetic inactivation of RUNX3 in microsatellite unstable sporadic colon cancers. *Int J Cancer*. 2004;112(5):754–759.
21. Ku JL, Kang SB, Shin YK, et al. Promoter hypermethylation downregulates RUNX3 gene expression in colorectal cancer cell lines. *Oncogene*. 2004;23(40):6736–6742.
22. McShane LM, Altman DG, Sauerbrei W, Taube SE, Gion M, Clark GM; Statistics Subcommittee of the NCI-EORTC Working Group on Cancer Diagnostics. Reporting recommendations for tumor marker prognostic studies (REMARK). *J Natl Cancer Inst*. 2005;97(16):1180–1184.
23. Steels E, Paesmans M, Berghmans T, et al. Role of p53 as a prognostic factor for survival in lung cancer: a systematic review of the literature with a meta-analysis. *Eur Respir J*. 2001;18(4):705–719.
24. DerSimonian R, Laird N. Meta-analysis in clinical trials. *Control Clin Trials*. 1986;7(3):177–188.
25. Higgins JP, Thompson SG, Deeks JJ, Altman DG. Measuring inconsistency in meta-analyses. *BMJ*. 2003;327(7414):557–560.
26. DerSimonian R. Meta-analysis in the design and monitoring of clinical trials. *Stat Med*. 1996;15(12):1237–1248; discussion 1249–1252.
27. Egger M, Davey Smith G, Schneider M, Minder C. Bias in meta-analysis detected by a simple, graphical test. *BMJ*. 1997;315(7109):629–634.
28. Ahlquist T, Lind GE, Costa VL, et al. Gene methylation profiles of normal mucosa, and benign and malignant colorectal tumors identify early onset markers. *Mol Cancer*. 2008;7:94.
29. Soong R, Shah N, Peh BK, et al. The expression of RUNX3 in colorectal cancer is associated with disease stage and patient outcome. *Br J Cancer*. 2009;100(5):676–679.
30. Ito K, Lim AC, Salto-Tellez M, et al. RUNX3 attenuates beta-catenin/T cell factors in intestinal tumorigenesis. *Cancer Cell*. 2008;14(3):226–237.
31. Hibi K, Nakao A. Lymph node metastasis is infrequent in patients with highly-methylated colorectal cancer. *Anticancer Res*. 2006;26(1A):55–58.
32. Ogino S, Meyerhardt JA, Kawasaki T, et al. CpG island methylation, response to combination chemotherapy, and patient survival in advanced microsatellite stable colorectal carcinoma. *Virchows Arch*. 2007;450(5):529–537.
33. Tan SH, Ida H, Lau QC, et al. Detection of promoter hypermethylation in serum samples of cancer patients by methylation-specific polymerase chain reaction for tumour suppressor genes including RUNX3. *Oncol Rep*. 2007;18(5):1225–1230.
34. Silva TD, Vidigal VM, Felipe AV, et al. DNA methylation as an epigenetic biomarker in colorectal cancer. *Oncol Lett*. 2013;6(6):1687–1692.
35. Nishio M, Sakakura C, Nagata T, et al. RUNX3 promoter methylation in colorectal cancer: its relationship with microsatellite instability and its suitability as a novel serum tumor marker. *Anticancer Res*. 2010;30(7):2673–2682.
36. Long C, Yin B, Lu Q, et al. Promoter hypermethylation of the RUNX3 gene in esophageal squamous cell carcinoma. *Cancer Invest*. 2007;25(8):685–690.
37. Tonomoto Y, Tachibana M, Dhar DK, et al. Differential expression of RUNX genes in human esophageal squamous cell carcinoma: downregulation of RUNX3 worsens patient prognosis. *Oncology*. 2007;73(5–6):346–356.
38. Watanabe T, Kobunai T, Ikeuchi H, et al. RUNX3 copy number predicts the development of UC-associated colorectal cancer. *Int J Oncol*. 2011;38(1):201–207.
39. Chen W, Gao N, Shen Y, Cen JN. Hypermethylation downregulates Runx3 gene expression and its restoration suppresses gastric epithelial cell growth by inducing p27 and caspase3 in human gastric cancer. *J Gastroenterol Hepatol*. 2010;25(4):823–831.
40. Delpu Y, Cordelier P, Cho WC, Torrisani J. DNA methylation and cancer diagnosis. *Int J Mol Sci*. 2013;14(7):15029–15058.
41. Ma X, Wang YW, Zhang MQ, Gazdar AF. DNA methylation data analysis and its application to cancer research. *Epigenomics*. 2013;5(3):301–316.
42. Chuang LS, Ito Y. RUNX3 is multifunctional in carcinogenesis of multiple solid tumors. *Oncogene*. 2010;29(18):2605–2615.
43. Jang BG, Kim WH. Molecular pathology of gastric carcinoma. *Pathobiology*. 2011;78(6):302–310.
44. Kohya N, Koga Y, Kitajima Y, Miyazaki K. Aberrant promoter hypermethylation in biliary tract carcinoma. *J Hepatobiliary Pancreat Surg*. 2006;13(4):296–305.
45. Lee JH, Pyon JK, Kim DW, et al. Expression of RUNX3 in skin cancers. *Clin Exp Dermatol*. 2011;36(7):769–774.
46. Lee JM, Shin JO, Cho KW, et al. Runx3 is a crucial regulator of alveolar differentiation and lung tumorigenesis in mice. *Differentiation*. 2011;81(4):261–268.
47. Lee YM. Control of RUNX3 by histone methyltransferases. *J Cell Biochem*. 2011;112(2):394–400.

48. Levanon D, Brenner O, Otto F, Groner Y. Runx3 knockouts and stomach cancer. *EMBO Rep.* 2003;4(6):560–564.
49. Shima K, Noshu K, Baba Y, et al. Prognostic significance of CDKN2A (p16) promoter methylation and loss of expression in 902 colorectal cancers: Cohort study and literature review. *Int J Cancer.* 2011;128(5):1080–1094.
50. Tamura G. Promoter methylation status of tumor suppressor and tumor-related genes in neoplastic and non-neoplastic gastric epithelia. *Histol Histopathol.* 2004;19(1):221–228.
51. Tamura G. Alterations of tumor suppressor and tumor-related genes in the development and progression of gastric cancer. *World J Gastroenterol.* 2006;12(2):192–198.
52. Zhao C, Bu X. Promoter methylation of tumor-related genes in gastric carcinogenesis. *Histol Histopathol.* 2012;27(10):1271–1282.
53. Suzuki M, Shigematsu H, Shames DS, et al. DNA methylation-associated inactivation of TGF β -related genes, DRM/Gremlin, RUNX3, and HPP1 in human cancers. *Br J Cancer.* 2013;109(12):3132.
54. Cassinotti E, Melson J, Liggett T, et al. DNA methylation patterns in blood of patients with colorectal cancer and adenomatous colorectal polyps. *Int J Cancer.* 2012;131(5):1153–1157.
55. Abouzeid HE, Kassem AM, Abdel Wahab AH, El-mezayen HA, Sharad H, Abdel Rahman S. Promoter hypermethylation of RASSF1A, MGMT, and HIC-1 genes in benign and malignant colorectal tumors. *Tumour Biol.* 2011;32(5):845–852.
56. Psofaki V, Kalogera C, Tzambouras N, et al. Promoter methylation status of hMLH1, MGMT, and CDKN2A/p16 in colorectal adenomas. *World J Gastroenterol.* 2010;16(28):3553–3560.
57. Voon DC, Wang H, Koo JK, et al. Runx3 protects gastric epithelial cells against epithelial-mesenchymal transition-induced cellular plasticity and tumorigenicity. *Stem Cells.* 2012;30(10):2088–2099.

OncoTargets and Therapy

Publish your work in this journal

OncoTargets and Therapy is an international, peer-reviewed, open access journal focusing on the pathological basis of all cancers, potential targets for therapy and treatment protocols employed to improve the management of cancer patients. The journal also focuses on the impact of management programs and new therapeutic agents and protocols on

Submit your manuscript here: <http://www.dovepress.com/oncotargets-and-therapy-journal>

patient perspectives such as quality of life, adherence and satisfaction. The manuscript management system is completely online and includes a very quick and fair peer-review system, which is all easy to use. Visit <http://www.dovepress.com/testimonials.php> to read real quotes from published authors.

Dovepress