

Scleral buckle hemorrhagic cyst masquerading as an orbital tumor

David RP Almeida¹
Eric K Chin¹
H Culver Boldt¹
Vinit B Mahajan^{1,2}

¹Department of Ophthalmology and Visual Sciences; ²Omic Laboratory, University of Iowa Hospitals and Clinics, Iowa City, IA, USA

Abstract: We present a case of a 41-year-old man who was referred for evaluation of a choroidal tumor with a remote history of scleral buckle placement for traumatic retinal detachment. Ocular imaging, echography, and magnetic resonance imaging could not rule out a neoplastic process so the patient was taken for surgical exploration where a hemorrhagic cyst was discovered. This is the first case in the literature of a silicone scleral buckle-associated hemorrhagic cyst presenting as orbital mass.

Keywords: choroidal mass, choroidal lesion, choroidal melanoma, echography, optical coherence tomography, magnetic resonance imaging

Introduction

Scleral buckle (SB) placement is a common procedure for the management of rhegmatogenous retinal detachments. Complications from SB surgery include exposure or migration, infection, strabismus, and foreign body sensation.¹ There have been cases of expansile hydrogel SBs simulating orbital masses^{2,3} but here we report the first case of a silicone SB with a periocular hemorrhagic cyst masquerading as an orbital tumor.

Case report

A 41-year-old man was referred for evaluation of a choroidal tumor. He had decreased vision and a new nasal visual field defect OS. There was no recent trauma or eye surgery; however, at 10 years of age he underwent SB procedure for a traumatic retinal detachment in his OS. Operative reports indicated that a segmental concave 281-type silicone tire was placed superotemporally. He was being treated with aspirin, lisinopril, and metoprolol for chronic heart failure. There was no history of cancer.

His vision measured 20/20 OD and 20/150 OS and his intraocular pressure was 18 mmHg OU. A dilated fundus exam OS suggested that there was an elevated choroidal mass in the superotemporal mid-periphery with overlying chorioretinal scarring and a buckle with moderate height (Figure 1A). Echography detected an extrascleral lesion outside the choroid between the SB and the globe centered at 2 o'clock with a maximum apical thickness of 4.96 mm (Figure 1B). Optical coherence tomography (OCT) displayed distortion of the outer retina and choroid with intact retinal pigment epithelium (Figure 1C).

Magnetic resonance imaging (MRI) of the orbits and brain revealed a relatively homogeneous crescent mass between the globe and SB (Figure 2A). Consistent with a 281-style concave silicone tire, the anterior-posterior chord length of the SB element measured 12.5 mm (Figure 2C), and extended circumferentially around the globe from 11.30 to clockwise 4 o'clock (Figure 2B). No other scans other than the native T1 sequences were done and this is a limitation of the study. Consequently, because

Correspondence: Vinit B Mahajan
University of Iowa Carver College
of Medicine, 200 Hawkins Drive, Iowa
City, IA, USA
Tel +1 319 356 3185
Fax +1 319 356 0363
Email vinit-mahajan@uiowa.edu

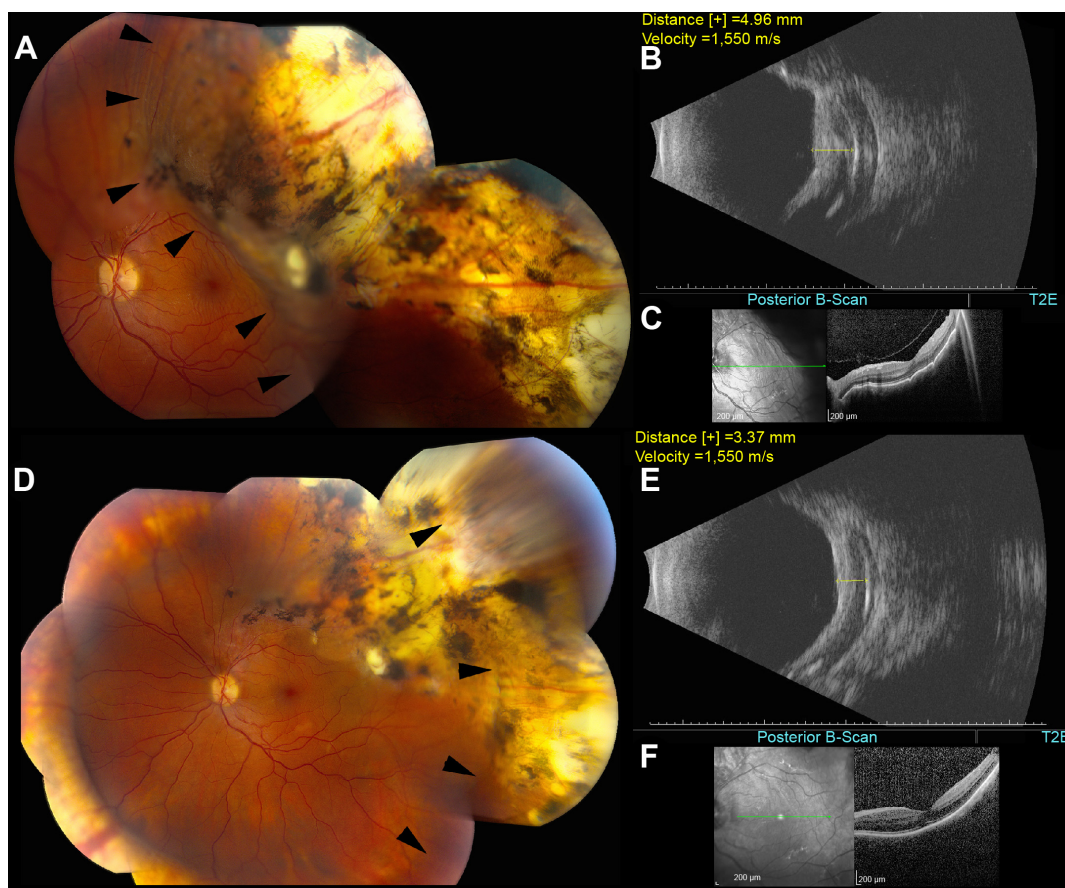


Figure 1 Color fundus, B-scan echography, and OCT images of the left eye.

Notes: Color fundus montage photograph of the (A) superotemporal choroidal lesion (arrow heads) in the left eye with corresponding (B) standardized B-scan echography and (C) macula OCT images. The elevated choroidal mass extends to the macula in the superotemporal region with overlying chorioretinal scarring and pigmentary changes. The echography shows heterogeneous reflectivity between the scleral buckle and the underlying sclera with a maximum apical thickness of 4.96 mm (transverse section, 2 o'clock position, at the equator). There is mild corrugation of the overlying choroid and retina pigment epithelium, with marked indentation far temporally on OCT. Color fundus montage photograph in the left eye (D) with corresponding echography (E) and macula OCT images (F) at 3-month follow-up. The superotemporal lesion (D, arrow heads) is significantly less elevated with a maximum apical height of 3.37 mm on echography (transverse section, 2 o'clock position, at the equator). The macular area is now flat with minimal distortion of the choroid and retina pigment epithelium on OCT.

Abbreviation: OCT, optical coherence tomography.

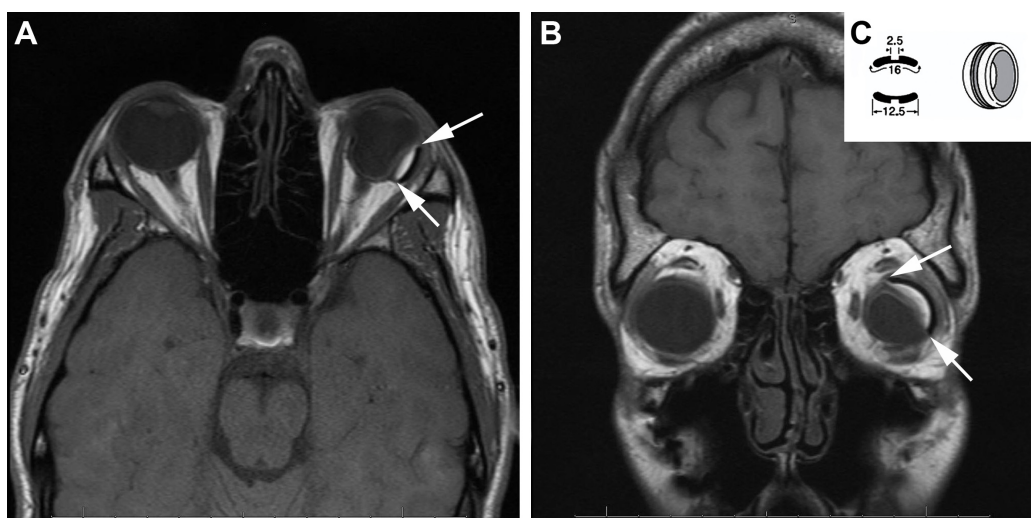


Figure 2 MRI of the orbits and brain.

Notes: (A) Axial T1 images reveal a relatively homogeneous extrascleral crescent mass centered at the posterior equator deep to the silicone scleral buckle element (arrows). (B) Coronal T1 images localize the lesion to between the scleral buckle and sclera from approximately 11.30 to clockwise 4 o'clock (arrows). (C) Schematic of the 281-type concave silicone element that was previously placed with an absolute chord length (anterior–posterior width) of 12.5 mm, consistent with in vivo MRI measurements.

Abbreviation: MRI, magnetic resonance imaging.

of his concern for an orbital neoplastic process, the patient underwent orbital exploration; pathology revealed a hemorrhagic cyst within the silicone SB capsule and no neoplastic tissue. The patient began oral prednisone 60 mg daily with a taper over 3 weeks, as an anti-inflammatory agent to minimize tissue edema of the hemorrhagic cyst.

Over the next 3 months, the patient's visual field defect resolved. The choroidal indentation became progressively smaller (Figure 1D) and the visual acuity improved to his baseline of 20/40. Echography showed a decreased maximum apical height of 3.37 mm (Figure 1E). The temporal macula flattened with minimal distortion of the choroid on OCT (Figure 1F). A recurrent episode resolved without surgery using only oral prednisone.

Discussion

Orbital foreign body simulating an ocular tumor is uncommon, occurring in less than 1% of cases presenting with an intraorbital mass.⁴ Even less common is SB presenting as an orbital lesion with enlargement of the SB elements. To date, these reports have involved the use of hydrogel implants (MIRAgel; Waltham, MA, USA), which were popular in the 1980s and early 1990s before being discontinued. These hydrogel implants were marketed as soft, flexible implants with physical properties allowing them to swell over time. The implant was discontinued due to complications, and it is currently recommended that MIRAgel buckling elements be promptly removed at the onset of discomfort to avoid late complications.⁵

We present the first case of a silicone SB-associated hemorrhagic cyst presenting as an orbital mass. Silicone is inert and unable to enlarge like hydrogel implants; consequently, the possibility of this type of SB presenting as an orbital mass has not been previously reported. Clinicians should

be aware of this entity in patients with a previous silicone SB. Standardized echography and MRI imaging can localize the mass between the SB and sclera, for which the changes in choroidal elevation are secondary to the mass effect from the hemorrhagic cyst.

Ethics statement

Full adherence to the Declaration of Helsinki and all Federal and State laws was observed.

Author contributions

Dr Almeida and Dr Mahajan had full access to all the data in the study and take full responsibility for the integrity of the data and the accuracy of the data analysis. All authors contributed to the design and conduct of the study; collection, management, analysis, and interpretation of the data; preparation, review, and approval of the manuscript; and the decision to submit the manuscript for publication.

Disclosure

The authors report no conflicts of interest in this work.

References

1. Covert DJ, Wiroszko WJ, Han DP, et al. Risk factors for scleral buckle removal: a matched, case-control study. *Am J Ophthalmol.* 2008;146(3):434–439.
2. Roldán-Pallarés M, del Castillo Sanz JL, Awad-El Susi S, Refojo MF. Long-term complications of silicone and hydrogel explants in retinal reattachment surgery. *Arch Ophthalmol.* 1999;117(2):197–201.
3. Shields CL, Demirci H, Marr BP, Mashayekhi A, Materin MA, Shields JA. Expanding MIRAgel scleral buckle simulating an orbital tumor in four cases. *Ophthalm Plast Reconstr Surg.* 2005;21(1):32–38.
4. Shields JA, Shields CL, Scartozzi R. Survey of 1,264 patients with orbital tumors and simulating lesions: The 2002 Montgomery Lecture, part 1. *Ophthalmology.* 2004;111(5):997–1008.
5. Roldán-Pallarés M, Hernández-Montero J, Llanes F, Fernández-Rubio JE, Ortega F. MIRAgel: hydrolytic degradation and long-term observations. *Arch Ophthalmol.* 2007;125(4):511–514.

Clinical Ophthalmology

Publish your work in this journal

Clinical Ophthalmology is an international, peer-reviewed journal covering all subspecialties within ophthalmology. Key topics include: Optometry; Visual science; Pharmacology and drug therapy in eye diseases; Basic Sciences; Primary and Secondary eye care; Patient Safety and Quality of Care Improvements. This journal is indexed on

Submit your manuscript here: <http://www.dovepress.com/clinical-ophthalmology-journal>

Dovepress

PubMed Central and CAS, and is the official journal of The Society of Clinical Ophthalmology (SCO). The manuscript management system is completely online and includes a very quick and fair peer-review system, which is all easy to use. Visit <http://www.dovepress.com/testimonials.php> to read real quotes from published authors.