

Silencing of carboxypeptidase E inhibits cell proliferation, tumorigenicity, and metastasis of osteosarcoma cells

Shuli Fan^{1,*}Xu Li^{2,*}Leiming Li²Liguo Wang²Zhangzhen Du²Yan Yang²Jiansong Zhao³Yan Li³

¹Department of Geriatrics, The First Affiliated Hospital of China Medical University, Shenyang, People's Republic of China; ²Department of Sports Medicine and Joint Surgery, The First Affiliated Hospital of China Medical University, Shenyang, People's Republic of China; ³Department of Orthopaedic Surgery, Shengjing Hospital of China Medical University, Shenyang, People's Republic of China

*These authors contributed equally to this work

Correspondence: Yan Li
Department of Orthopaedic Surgery,
Shengjing Hospital of China Medical
University, 36 Sanhao Street, Shenyang
110004, People's Republic of China
Tel +86 24 2563 8112
Fax +86 24 96615 3311
Email liyany0612@sina.cn

Abstract: Carboxypeptidase E (CPE), a prohormone processing enzyme, has been implicated in the progression of multiple malignancies. However, the biological role and molecular mechanisms of CPE in osteosarcoma remain elusive. In this study, we assessed the effects of CPE on cell proliferation, tumorigenicity, migration, and invasion in osteosarcoma. Our results showed that silencing of CPE significantly inhibited cell proliferation, caused cell cycle arrest at G₀/G₁ phase, decreased the expression levels of cell cycle protein, cyclin D₁, and inhibited tumorigenicity in vivo. Additionally, CPE downregulation repressed the migratory and invasive capacities of osteosarcoma cells in vitro. Furthermore, overexpression of CPE-ΔN (a splice variant of CPE) enhanced the cell growth, migration, and invasion of osteosarcoma cells. It is possible that both CPE forms are involved in the tumorigenesis and development of osteosarcoma, and therefore CPE may provide a promising biological target for osteosarcoma therapy.

Keywords: carboxypeptidase E, osteosarcoma, proliferation, tumorigenicity, migration, invasion

Introduction

Osteosarcoma is a common malignant bone tumor that frequently occurs in children and adolescents and is reported to be responsible for 2.4% of all pediatric cancers.^{1,2} Despite significant progress in the diagnosis and therapy of osteosarcoma, the 5-year survival rate has remained unchanged over the past 20 years, especially for metastatic osteosarcoma with less than 20% overall survival.^{3,4} Therefore, it is imperative to understand the molecular mechanisms of osteosarcoma and identify new therapeutic targets for metastatic osteosarcoma.

Carboxypeptidase E (CPE) was initially identified as a prohormone processing enzyme, which is involved in various biological processes, such as the synthesis of neuropeptides and hormones.^{5,6} Recently, accumulated evidence suggests that CPE serves many essential nonenzymatic roles in addition to its enzymatic function. Deregulation of CPE is associated with a variety of diseases. For instance, CPE knockout mice can more easily exhibit disease states, such as obesity,⁷ diabetes,⁸ lower bone mineral density phenotype,⁹ and behavioral deficiencies.¹⁰ Increased CPE expression was shown in many types of cancer, and it was implicated in cancer progression as it regulates the proliferation, invasion, and chemosensitivity of tumor cells.^{11–14} Recently, an N-terminally truncated splice variant of CPE (CPE-ΔN) was identified and found to be highly expressed in metastatic cancers; its expression was correlated with tumor growth and invasiveness, and it might be a potential biomarker for predicting future



metastasis and recurrence.^{15,16} Yang et al¹⁷ have shown that the gene coding for CPE was upregulated in osteosarcoma samples compared to that in the normal controls, indicating a role for CPE in osteosarcoma development. However, how it affects the development and progression of osteosarcoma remains elusive.

The aim of this study was to explore the functional role of CPE in the tumorigenesis and development of osteosarcoma. Decreased CPE expression by RNA interference significantly inhibited cell growth, tumorigenicity, migration, and invasiveness in osteosarcoma cells. Further examination demonstrated that these effects might be due to both forms of CPE.

Materials and methods

Cell culture

Three human osteosarcoma cell lines MG-63, U2-OS, and Saos-2 (Cell Bank of Chinese Academy of Sciences, Shanghai, People's Republic of China) were cultured in Dulbecco's Modified Eagle's Medium (Gibco, Grand Island, NY, USA) containing 10% fetal bovine serum (FBS, HyClone, Logan, UT, USA), and maintained in a 37°C incubator with 5% CO₂. The cells were digested with 0.25% trypsin for passage when cell reached 80% confluence. The use of human CRC cell lines was approved by the Ethics Committee of China Medical University.

Plasmid construction and stable cell line screening

Short hairpin ribonucleic acid (shRNA) that targets CPE or scramble nonspecific sequence (negative control) was constructed in the pGCsi-H1 Vector (GeneChem, Shanghai, People's Republic of China). The resulting plasmid was then transfected into MG-63 cells using Lipofectamine 2000 reagent (Invitrogen, Carlsbad, CA, USA) according to the manufacturer's instructions. Twenty-four hours after transfection, cells were selected with G418 (200 µg/mL, Invitrogen) for stable CPE-silenced clones. The sequences of CPE shRNA are 5'-GATCCCCGAGACAATTGTCAACCTGTTCAAGAGACAGGTTGACAATTGTCTCGTTTT-3' (forward) and 5'-AGCTAAAACGAGACAATTGTCAACCTGTCTTGAACAGGTTGACAATTGTCTCGGG-3' (reverse). To obtain CPE-ΔN overexpressed cells, pcDNA3.1 vector with the coding sequence of CPE-ΔN was transfected into the Saos-2 cells using Lipofectamine 2000 Reagent (Invitrogen). The primers of CPE-ΔN were designed according to the reported gene sequences of human CPE (GenBank accession number NM_001873.2).

Real-time PCR

Total RNA from the MG-63, control shRNA, and CPE shRNA cells was extracted using an RNA simple Total RNA Kit (TIANGEN, Beijing, People's Republic of China) and reverse transcribed into complementary DNA. The primer sequences are as follows: CPE: 5'-TG TAGATGGAACCACCAACGG-3' (forward) and 5'-ACAAATCCTTTAACTCCTCGG-3' (reverse); CPE-ΔN: 5'-TG TAGATGGAACCACCAACGG-3' and 5'-ACAAATCCTTTAACTCCTCGG-3'; and β-actin: 5'-CTTAGTTGCGTTACACCCTTCTTG-3' (forward) and 5'-CTGTACCTTCACCGTTCCAGTTT-3' (reverse). Expression of CPE was determined using an Exicycler™ 96 real-time (RT) polymerase chain reaction (PCR) machine (Bioneer, Daejeon, South Korea).

Western blot analysis

Total proteins from cultured cells and tissues were extracted using radioimmunoprecipitation assay lysis buffer (Beyotime Institute of Biotechnology, Haimen, People's Republic of China); the protein concentration was quantified using bicinchoninic acid method (Beyotime). Equal amounts of proteins were subjected to sodium dodecyl sulfate-polyacrylamide gel electrophoresis and then transferred onto polyvinylidene difluoride membranes (Millipore, Billerica, MA, USA). The membranes were blocked with 5% nonfat milk, followed by incubation with corresponding diluted primary antibodies (anti-CPE, 1:3,000, BD Biosciences; anti-β-actin, 1:1,000, Santa Cruz Biotechnology, Santa Cruz, CA, USA; anti-cyclin D₁ and anti-p65, 1:400, Boster, Wuhan, People's Republic of China) at 4°C overnight. The membranes were subjected to further incubation with horseradish peroxidase-labeled secondary antibody (Beyotime) at 37°C for 45 minutes. Targeted protein was visualized using electrochemiluminescence reagents (7Sea Biotech, Shanghai, People's Republic of China), and the scanned images were analyzed with Gel-Pro-Analyzer software.

MTT assay

The cell viability was assessed using 3-(4,5-dimethylthiazol-2-yl)-2,5-diphenyltetrazolium bromide (MTT) assay. Briefly, the cells were cultured in 96-well microplates, with each well containing 3×10³ cells. MTT (Sigma-Aldrich, St Louis, MO, USA) at a final concentration of 0.2 mg/mL was added to each well at different time points (12, 24, 48, 72, or 96 hours). Cell supernatants were removed after additional 4 hours incubation, and the formazan crystals were dissolved in dimethyl sulfoxide (200 µL/well, Sigma-Aldrich). The optical density at 490 nm was determined with a microplate reader.

Colony formation assay

Five hundred cells per dish were trypsinized, resuspended in culture medium, and seeded into 35 mm dishes; culture medium was changed every 2 or 3 days. After 14 days of incubation, the visible cell colonies were fixed with 4% paraformaldehyde, followed by staining with Giemsa solution (Nanjing Jiancheng, Nanjing, People's Republic of China) for 8 minutes. The colonies consisting of at least 50 cells were counted under a microscope, and colony formation efficiency was calculated.

Flow cytometry analysis

Effect of CPE on cycle distribution was determined using flow cytometry. Cells were trypsinized and fixed in 70% cold ethanol at 4°C for 2 hours; after incubation with staining buffer (containing propidium iodide and RNase A) for 30 minutes at 37°C in the dark, the cells were then analyzed by flow cytometry in FACSCalibur (BD Diagnostics, Franklin Lakes, NJ, USA).

Tumor xenograft study

Female BALB/c nude mice about 6 weeks old were purchased from Vital River Laboratory Animal Technology Co Ltd (Beijing, People's Republic of China). Animal care and experimental protocols were approved by the Experimental Animal Ethics Committee of China Medical University, and were in accordance with the Guide for the Care and Use of Laboratory Animals of the National Institutes of Health. To initiate tumor xenograft, 1×10^6 parental MG-63 cells, MG-63 cells expressing control shRNA, or CPE shRNA were injected subcutaneously into the right armpit flank of nude mice ($n=6$ each group). Tumor sizes were monitored every 3 days, and the tumor volumes were calculated.

Hematoxylin and eosin staining

To evaluate the histologic alterations, xenograft tissues were fixed in formaldehyde, paraffin embedded, and sliced into 5 μm sections. After staining with hematoxylin and eosin, the pathologic changes in tumor tissues were observed under a light microscope.

Scratch wound assay

Cells were cultured in 6-well plates in complete medium until they reached confluence. A 200 μL pipette tip was used to scratch a uniform wound on the monolayer cell cultures. The stripped cells were washed away with serum-free culture medium, and the other cells were cultured in medium containing 10% FBS. Images were captured at 0, 12, and 24 hours after scratch, and the distances of cells' migration

into the denuded area were measured. Migration rate was calculated as:

$$\frac{\text{Migrated distance at indicated time} - \text{initial distance}}{\text{Initial distance}} \times 100\% \quad (1)$$

Matrigel invasion assay

Transwell membrane filter inserts (8 μm pore size, Corning Inc, New York, NY, USA) and the Matrigel (BD Biosciences) were used for Transwell invasion assay. The cells were seeded onto the upper chamber (2×10^4 cells/well). The lower chamber was filled with 800 μL of culture medium containing 20% FBS. After 24 hours of incubation, cells in the upper chamber were scraped away, and the cells that penetrated through the lower chamber were stained with 0.5% crystal violet dye (Amresco, Solon, OH, USA) for 5 minutes. The average number of cells in five fields per membrane was counted in triplicate with a microscope.

Statistical analysis

Data are presented as the mean \pm standard deviation, with analyses carried out using GraphPad Prism 5.0 software (San Diego, CA, USA). One-way analysis of variance was used for the analyses between the groups, and multiple comparisons were performed using Bonferroni post hoc test. $P < 0.05$ was considered statistically significant.

Results

Establishment of stably CPE-silenced osteosarcoma cell line

To investigate the role of CPE in osteosarcoma, we first determined the expression levels of CPE in three osteosarcoma cell lines by Western blot analysis; the MG-63 cells with highest CPE expression (Figure 1A) in tested cell lines were chosen for loss of function study. The efficiency of shRNA-mediated CPE inhibition was determined using RT-PCR and Western blot analysis. As shown in Figure 1B and C, CPE shRNA cells presented low expression of CPE at mRNA and protein levels compared with the control shRNA cells ($P < 0.001$). The molecular weight of CPE was approximately 52 kDa. These results indicated that the stable CPE-silenced osteosarcoma cell line was constructed.

Silencing of CPE inhibits the proliferation and induces cell cycle arrest in osteosarcoma cells

The effect of CPE knockdown on cell proliferation was determined using MTT assay. Results showed that silencing

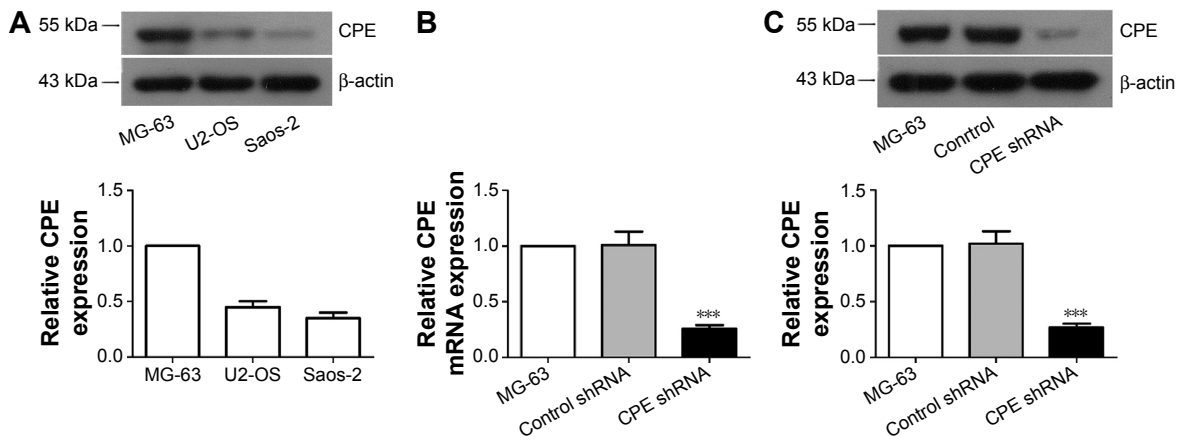


Figure 1 Establishment of CPE-silencing osteosarcoma cell line.

Notes: (A) Western blot analysis of CPE protein levels in MG-63, U2-OS and Saos-2 cells. (B) Real-time PCR and (C) Western blot analysis of the expression levels of CPE mRNA and protein in parental, control shRNA, and CPE shRNA-transfected MG-63 cells. Relative CPE expression level was quantified by grayscale analysis with normalization to β -actin. Data are presented as the mean \pm standard deviation of triplicate experiments. Compared with the control group, *** $P < 0.001$.

Abbreviations: CPE, carboxypeptidase E; PCR, polymerase chain reaction; mRNA, messenger ribonucleic acid; shRNA, short hairpin ribonucleic acid.

of CPE significantly inhibited the proliferation as compared with the control shRNA cells (Figure 2A; $P < 0.01$). Consistently, clone formation assays also showed that less colony numbers existed in CPE-silenced cells compared with the control cells (Figure 2B and C; $P < 0.01$), indicating a positive role of CPE in osteosarcoma cell proliferation. We further demonstrated that CPE inhibition affected the cell cycle progression as detected by flow cytometry (Figure 2D and E). CPE inhibition led to the accumulation of cells in G_0/G_1 phase ($P < 0.01$) and reduced the S and G_2 phase cell population ($P < 0.05$) as compared with the control cells. Meanwhile, the expression level of cyclin D_1 , which contributes to tumorigenesis through regulating cell

cycle G_1/S transition,¹⁸ was significantly decreased in CPE-silenced cells (Figure 2F; $P < 0.01$). These results suggest that silencing of CPE expression could arrest cell cycle in G_0/G_1 phase and inhibit cell proliferation of osteosarcoma MG-63 cells.

Silencing of CPE inhibits xenograft osteosarcoma growth in nude mice

In vitro experiments, we have showed that CPE knockdown could inhibit cell proliferation and clonogenicity; we further investigated whether CPE knockdown would reduce osteosarcoma tumor growth in vivo. Parental MG-63 cells and stable CPE shRNA or control-transfected cells were

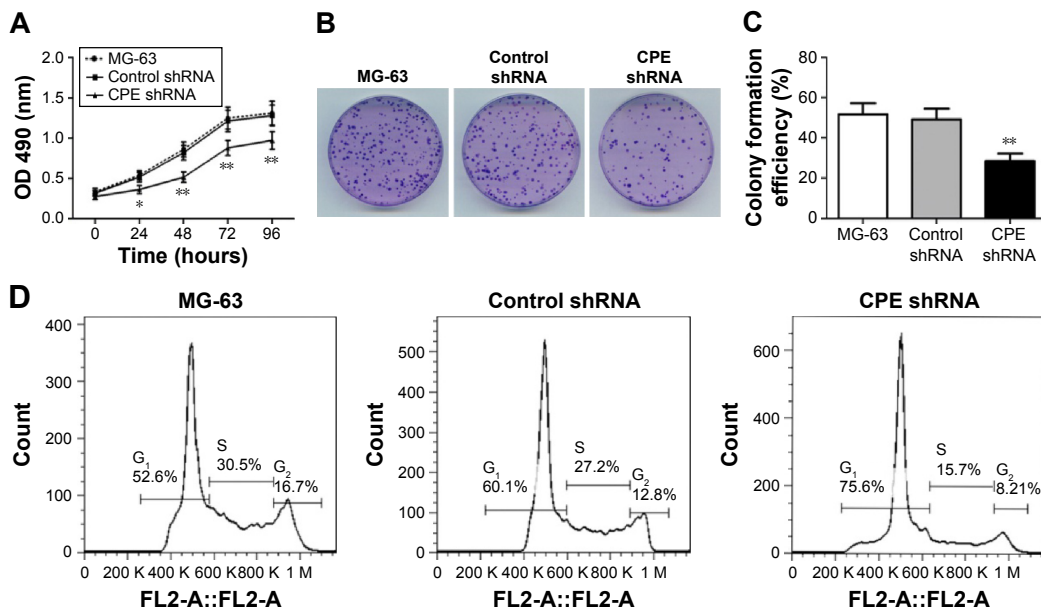


Figure 2 (Continued)

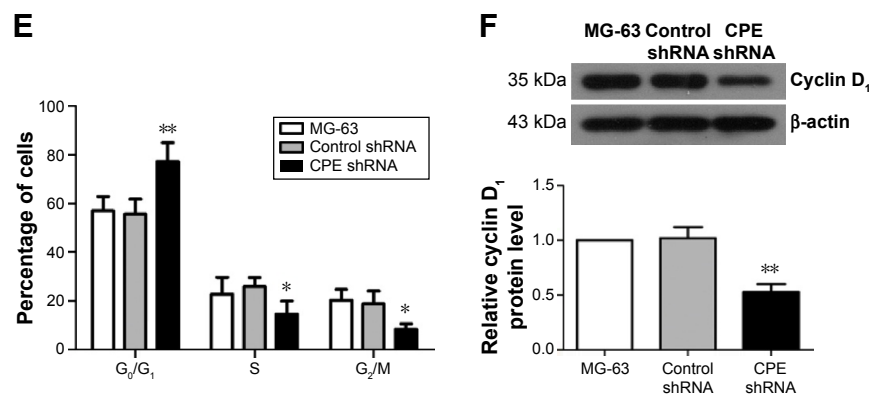


Figure 2 Silencing of CPE inhibits osteosarcoma cell proliferation and induces cell cycle arrest.

Notes: (A) Cell proliferation was assessed over 12–96 hours by MTT assay. (B, C) Cell proliferation was evaluated by colony formation assay, and the colony formation efficiency was calculated. (D, E) Cell cycle distribution of the parental MG-63 cells, control shRNA cells, and CPE shRNA cells was assessed using flow cytometry and the proportions of cells in G₀/G₁, S, and G₂/M phase were calculated. (F) Expression levels of cyclin D₁ in three group cells were determined by Western blot analysis, with β -actin as the internal control for grayscale comparison. Data are presented as the mean \pm standard deviation of triplicate experiments. Compared with the control group, * $p < 0.05$, ** $p < 0.01$.

Abbreviations: CPE, carboxypeptidase E; MTT, 3-(4,5-dimethylthiazol-2-yl)-2,5-diphenyltetrazolium bromide; OD, optical density; shRNA, short hairpin ribonucleic acid.

subcutaneously injected into nude mice to initiate tumor xenografts; tumor formation was followed for 35 days. Nude mice bearing control and parental MG-63 cells displayed larger tumor volume and tumor size as shown in Figure 3A and B; however, xenograft tumors derived from CPE-depleted cells were significantly smaller than control or MG-63 group (Figure 3A and B; $P < 0.01$). Western blot results confirmed the decreased expression level of CPE in CPE-silenced cell

derived tumors (Figure 3C; $P < 0.01$). Histologic changes of xenograft tumors assessed by HE staining further revealed that control and parental groups showed high-grade malignancy, as characterized by high nuclear-to-cytoplasmic ratio and prominent nucleoli with minimal cytoplasm, while CPE downregulation reversed these features (Figure 3D). These results indicate that silencing of CPE possesses antitumor effects in vivo.

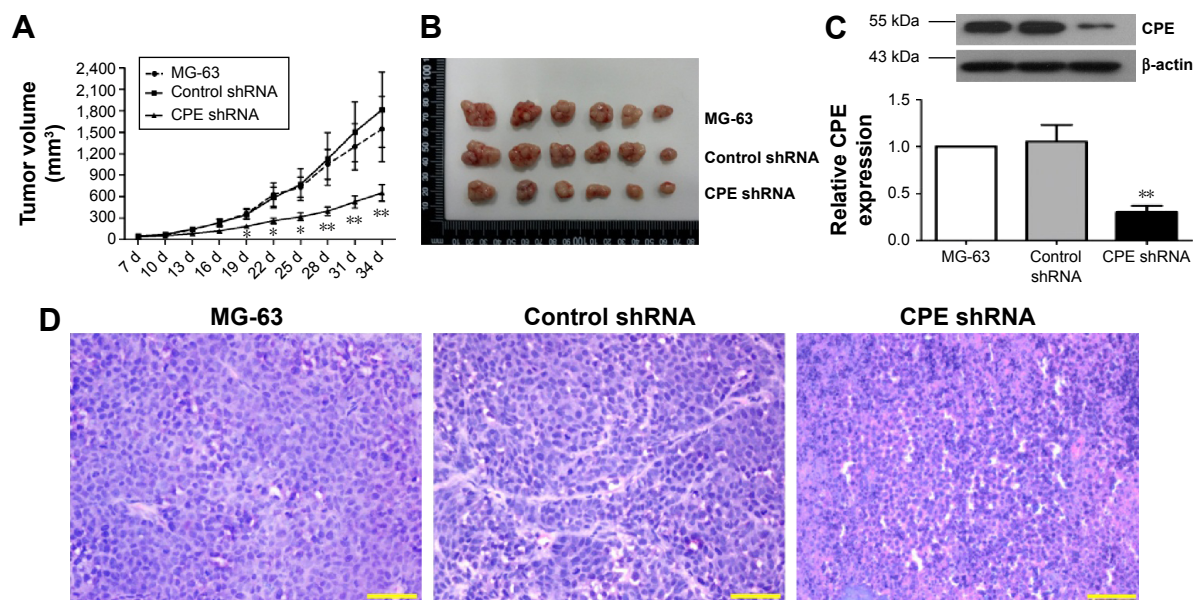


Figure 3 Silencing of CPE inhibited xenograft tumor growth in vivo.

Notes: (A) MG-63 cells, control shRNA cells, or CPE shRNA cells were subcutaneously inoculated into nude mice. The tumor volumes were recorded every 3 days for 35 days. (B) Visualization of tumor sizes from three different groups. (C) The expression levels of CPE in xenograft tumor tissues were determined by Western blot analysis, with β -actin as the internal control for grayscale comparison. (D) Histological changes of three groups of xenograft tissues were assessed by hematoxylin–eosin staining, magnification 400 \times , scale bars = 20 μ m. Data are presented as the mean \pm standard deviation of triplicate experiments. Compared with the control group, * $P < 0.05$, ** $P < 0.01$.

Abbreviations: CPE, carboxypeptidase E; shRNA, short hairpin ribonucleic acid; d, days.

Silencing of CPE represses invasion and migration of osteosarcoma cells

Migration and invasion are major steps for malignancy.¹⁹ To detect whether CPE downregulation affects the cell motility, we further performed the wound healing assay and Matrigel invasion assay to detect whether CPE downregulation affects cell metastasis. CPE-silenced cells showed lower migration distance compared with the control cells (Figure 4A and B; $P<0.05$ at 12 hours and $P<0.01$ at 24 hours), indicating an inhibitory effect of CPE silencing on cell motility. Matrigel invasion assay similarly revealed that less CPE-silenced cells invaded through the Matrigel-coated insert after 24 hours, whereas control and parental cells maintained high invasive capacities (Figure 4C and D; $P<0.01$). These results indicate that CPE expression is involved in cell migration and invasiveness of osteosarcoma cells.

Overexpression of CPE-ΔN promotes cell growth, migration, and invasion of osteosarcoma cells

Previous studies have shown that the splice variant form of CPE (CPE-ΔN) plays a key role in tumor metastasis, and the full form of CPE has the opposite effects in metastasis.^{15,16} Since shRNA targets both CPE forms, we further determined

whether these effects are due to CPE-ΔN by constructing CPE-ΔN overexpressing cells. qRT-PCR showed that the CPE-ΔN mRNA level was significantly upregulated in CPE-ΔN-overexpressed Saos-2 cells compared with the vector cells (Figure 5A, $P<0.01$). Western blot analysis also showed the elevated expression of CPE-ΔN protein in CPE-ΔN-overexpressed cells, and the molecular weight of CPE-ΔN was approximately 46 kDa (Figure 5B). Next, the role of CPE in cell proliferation was assessed by MTT and colony formation assays. As shown in Figure 5C and D, ectopic expression of CPE-ΔN enhanced cell proliferation and formed more colonies as compared to the vector cells. Furthermore, CPE-ΔN exerted a metastatic potential, increased CPE-ΔN expression, enhanced the migratory and invasive capacities of Saos-2 cells compared with the vector cells (Figure 5E and F; $P<0.01$). It was noteworthy that overexpression of CPE-ΔN had no effect on cell cycle regulation of Saos-2 cells (data not shown). These results indicate that CPE-ΔN promotes cell growth and metastasis in osteosarcoma cells.

Discussion

Recurrence and metastasis remain major causes of poor prognosis for osteosarcoma. Finding effective therapies that interfere with this processes are crucial. In this study,

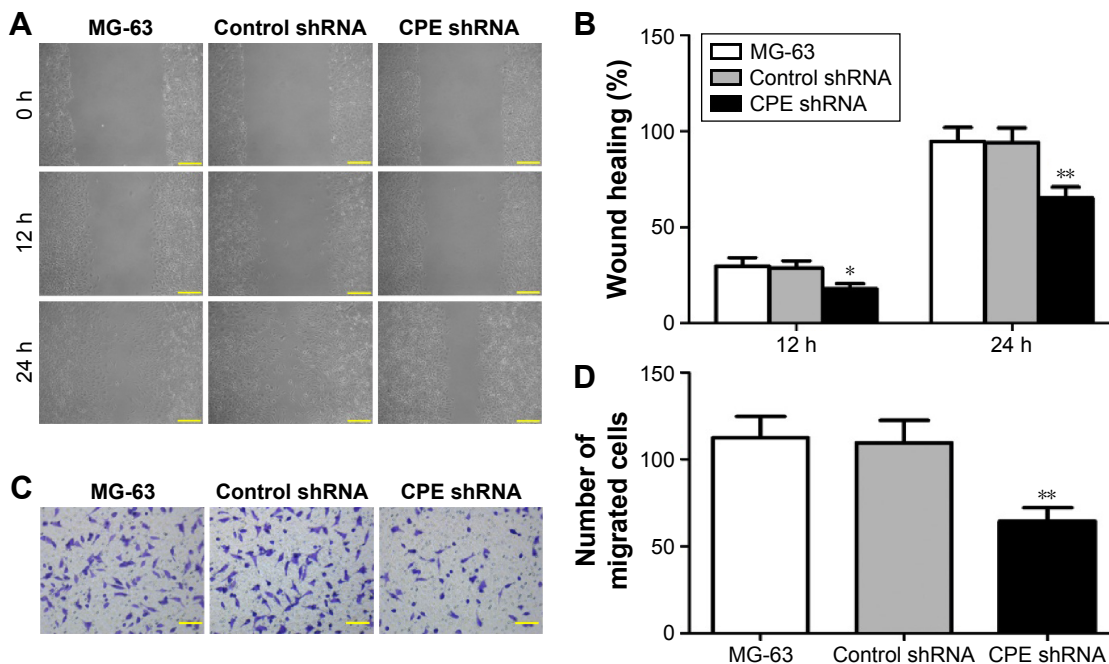


Figure 4 Silencing of CPE decreases the invasive and migratory properties of osteosarcoma cells.

Notes: (A, B) Cell mobility of MG-63 cells, control shRNA cells, and CPE shRNA cells was determined by wound healing assay, and the migration rates at 12 and 24 hours were calculated. (A) Magnification 100×, scale bars =100 μm. (C, D) Cell invasive ability was assessed by Matrigel invasion assay, and the invaded cells were counted under the microscope after 24 hours incubation. (C) Magnification 200×, scale bars =50 μm. Data are expressed as the mean ± standard deviation of triplicate experiments. Compared with the control group, * $P<0.05$, ** $P<0.01$.

Abbreviations: CPE, carboxypeptidase E; shRNA, short hairpin ribonucleic acid.

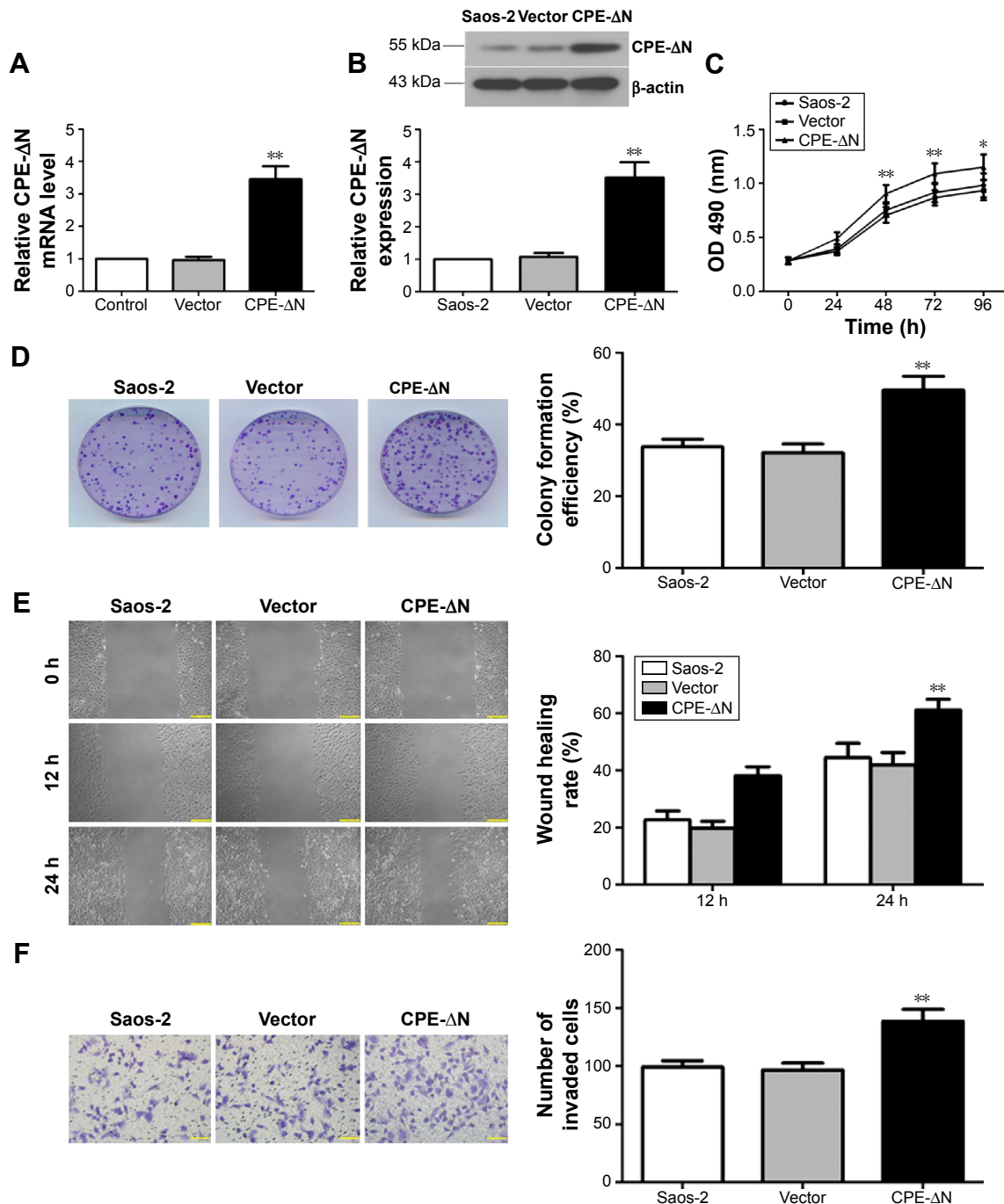


Figure 5 Overexpression of CPE-ΔN promotes cell growth, migration, and invasion of osteosarcoma cells.

Notes: (A) Real-time PCR analysis of CPE-ΔN mRNA levels in Saos-2 cells. (B) Western blot analysis of CPE-ΔN protein levels in Saos-2 cells. Relative CPE-ΔN expression level was quantified by grayscale analysis with normalization to β-actin. (C) Cell proliferation assessed by MTT assay over 96 hours. (D) Cell proliferative capacity was determined by colony formation assay. (E) Cell migration was determined by the wound-healing assay. The migration rates at 12 and 24 hours were calculated. Magnification 100×, scale bars =100 μm. (F) Cell invasive ability was assessed by Matrigel invasion assay, and the invaded cells were counted under the microscope. Magnification 200×, scale bars =50 μm. Data are presented as the mean ± standard deviation of triplicate experiments. Compared with the vector group, *P<0.05, **P<0.01.

Abbreviations: CPE, carboxypeptidase E; mRNA, messenger ribonucleic acid; MTT, 3-(4,5-dimethylthiazol-2-yl)-2,5-diphenyltetrazolium bromide; PCR, polymerase chain reaction.

we demonstrated that the depletion of CPE inhibited cell proliferation, induced cell cycle arrest in G₀/G₁ phase, and reduced tumorigenicity in vivo. In addition, silencing of CPE suppressed migration and invasion of osteosarcoma cells.

Further overexpression experiments showed that CPE-ΔN was also involved in the regulation of cell growth and migration of osteosarcoma cells. Taken together, CPE may be a promising therapeutic target for osteosarcoma.

Aberrant expression of CPE has been shown in many neuroendocrine and nonendocrine cancer types.¹³ For instance, CPE was highly expressed in breast,²⁰ cervical,²¹ colorectal,^{11,22} and kidney cancer.²³ However, decreased CPE expression was also observed in human fibrosarcoma and glioblastoma cells.^{14,24} These different results might be dependent on the different tumor environments and the relative expression of CPE and CPE-ΔN in tumor cells.¹⁴ In this study, we found that RNA interference-mediated downregulation of CPE resulted in cell cycle arrest in G₀/G₁ phase, reduced the expression of cell cycle-related protein cyclin D₁, and suppressed osteosarcoma cell growth and tumorigenicity activity in vitro and in vivo. Since proliferation and cell cycle are important factors for tumor development and progression,^{25,26} our results indicate that CPE promotes tumorigenesis in osteosarcoma through regulating cell proliferation and cell cycle progression, which are consistent with prior results found in pancreatic and colorectal cancer.^{11,12}

In addition to these findings, we also observed that silencing of CPE expression resulted in the inhibition of migration and invasion of osteosarcoma cells. Recent studies have demonstrated that the splice variant, CPE-ΔN, is highly expressed in metastatic cancers and is a biomarker for predicting future metastasis.^{13,16} However, the full form of CPE (WT-CPE) has the opposite effects and has anti-invasion and antimigration properties.^{14,24} In this study, shRNA interference downregulated both forms of CPE. Thus, the invasion and migration-promoting effects might be due to CPE-ΔN and not WT-CPE. By overexpressing CPE-ΔN in osteosarcoma cells, we found that overexpression of CPE-ΔN significantly enhanced the growth rate of osteosarcoma cells and promoted cell migration and invasiveness, but had no effect on cell cycle regulation. Together, these results indicate that both CPE forms might be involved in the tumorigenesis and development of osteosarcoma. However, there are still some limitations in our results, such as the limited cell lines used. So, the role of CPE on osteosarcoma malignancy in human patients still needs to be demonstrated.

In summary, data from our results demonstrate that silencing of CPE inhibits cell growth in vitro and in vivo, causes cell cycle arrest at G₀/G₁ phase, and suppresses metastasis of osteosarcoma cells. Overexpression of CPE-ΔN promotes cell proliferation, migration, and invasion. It is possible that both CPE forms are involved in the tumorigenesis and development of osteosarcoma, and therefore CPE may provide a promising biological target for osteosarcoma therapy.

Acknowledgments

This study was supported by grants from the National Natural Science Foundation of China (numbers 30973021 and 81272946).

Disclosure

The authors report no conflicts of interest in this work.

References

- Ottaviani G, Jaffe N. The epidemiology of osteosarcoma. *Cancer Treat Res.* 2009;152:3–13.
- He H, Ni J, Huang J. Molecular mechanisms of chemoresistance in osteosarcoma (review). *Oncol Lett.* 2014;7(5):1352–1362.
- Geller DS, Gorlick R. Osteosarcoma: a review of diagnosis, management, and treatment strategies. *Clin Adv Hematol Oncol.* 2010;8(10):705–718.
- Chou AJ, Geller DS, Gorlick R. Therapy for osteosarcoma: where do we go from here? *Paediatr Drugs.* 2008;10(5):315–327.
- Fricker LD, Snyder SH. Purification and characterization of enkephalin convertase, an enkephalin-synthesizing carboxypeptidase. *J Biol Chem.* 1983;258(18):10950–10955.
- Cawley NX, Wetsel WC, Murthy SR, Park JJ, Pacak K, Loh YP. New roles of carboxypeptidase E in endocrine and neural function and cancer. *Endocr Rev.* 2012;33(2):216–253.
- Naggert JK, Fricker LD, Varlamov O, et al. Hyperproinsulinaemia in obese fat/fat mice associated with a carboxypeptidase E mutation which reduces enzyme activity. *Nat Genet.* 1995;10(2):135–142.
- Cawley NX, Zhou J, Hill JM, et al. The carboxypeptidase E knockout mouse exhibits endocrinological and behavioral deficits. *Endocrinology.* 2004;145(12):5807–5819.
- Cawley NX, Yanik T, Woronowicz A, Chang W, Marini JC, Loh YP. Obese carboxypeptidase E knockout mice exhibit multiple defects in peptide hormone processing contributing to low bone mineral density. *Am J Physiol Endocrinol Metab.* 2010;299(2):E189–E197.
- Woronowicz A, Koshimizu H, Chang SY, et al. Absence of carboxypeptidase E leads to adult hippocampal neuronal degeneration and memory deficits. *Hippocampus.* 2008;18(10):1051–1063.
- Liang XH, Li LL, Wu GG, et al. Upregulation of CPE promotes cell proliferation and tumorigenicity in colorectal cancer. *BMC Cancer.* 2013;13:412.
- Liu A, Shao C, Jin G, et al. Downregulation of CPE regulates cell proliferation and chemosensitivity in pancreatic cancer. *Tumour Biol.* 2014;35(12):12459–12465.
- Murthy SR, Pacak K, Loh YP. Carboxypeptidase E: elevated expression correlated with tumor growth and metastasis in pheochromocytomas and other cancers. *Cell Mol Neurobiol.* 2010;30(8):1377–1381.
- Murthy SR, Dupart E, Al-Sweel N, Chen A, Cawley NX, Loh YP. Carboxypeptidase E promotes cancer cell survival, but inhibits migration and invasion. *Cancer Lett.* 2013;341(2):204–213.
- Lee TK, Murthy SR, Cawley NX, et al. An N-terminal truncated carboxypeptidase E splice isoform induces tumor growth and is a biomarker for predicting future metastasis in human cancers. *J Clin Invest.* 2011;121(3):880–892.
- Zhou K, Liang H, Liu Y, Yang C, Liu P, Jiang X. Overexpression of CPE-deltaN predicts poor prognosis in colorectal cancer patients. *Tumour Biol.* 2013;34(6):3691–3699.
- Yang Z, Chen Y, Fu Y, et al. Meta-analysis of differentially expressed genes in osteosarcoma based on gene expression data. *BMC Med Genet.* 2014;15:80.
- Jirawatnotai S, Hu Y, Michowski W, et al. A function for cyclin D₁ in DNA repair uncovered by protein interactome analyses in human cancers. *Nature.* 2011;474(7350):230–234.

19. Gupta GP, Massague J. Cancer metastasis: building a framework. *Cell*. 2006;127(4):679–695.
20. Du J, Keegan BP, North WG. Key peptide processing enzymes are expressed by breast cancer cells. *Cancer Lett*. 2001;165(2): 211–218.
21. Bachtary B, Boutros PC, Pintilie M, et al. Gene expression profiling in cervical cancer: an exploration of intratumor heterogeneity. *Clin Cancer Res*. 2006;12(19):5632–5640.
22. Provenzani A, Fronza R, Loreni F, Pascale A, Amadio M, Quattrone A. Global alterations in mRNA polysomal recruitment in a cell model of colorectal cancer progression to metastasis. *Carcinogenesis*. 2006; 27(7):1323–1333.
23. Cutcliffe C, Kersey D, Huang CC, Zeng Y, Walterhouse D, Perlman EJ. Clear cell sarcoma of the kidney: up-regulation of neural markers with activation of the sonic hedgehog and Akt pathways. *Clin Cancer Res*. 2005;11(22):7986–7994.
24. Horing E, Harter PN, Seznec J, et al. The “go or grow” potential of gliomas is linked to the neuropeptide processing enzyme carboxypeptidase E and mediated by metabolic stress. *Acta Neuropathol*. 2012; 124(1):83–97.
25. Sherr CJ. Cancer cell cycles. *Science*. 1996;274(5293):1672–1677.
26. Evan GI, Vousden KH. Proliferation, cell cycle and apoptosis in cancer. *Nature*. 2001;411(6835):342–348.

OncoTargets and Therapy

Publish your work in this journal

OncoTargets and Therapy is an international, peer-reviewed, open access journal focusing on the pathological basis of all cancers, potential targets for therapy and treatment protocols employed to improve the management of cancer patients. The journal also focuses on the impact of management programs and new therapeutic agents and protocols on

Submit your manuscript here: <http://www.dovepress.com/oncotargets-and-therapy-journal>

patient perspectives such as quality of life, adherence and satisfaction. The manuscript management system is completely online and includes a very quick and fair peer-review system, which is all easy to use. Visit <http://www.dovepress.com/testimonials.php> to read real quotes from published authors.

Dovepress