

# Overexpression of ecotropic viral integration site-1 is a prognostic factor of lung squamous cell cancer

Xueliang Xu<sup>1</sup>  
Shengchen Liu<sup>2</sup>  
Xia Ji<sup>1</sup>

<sup>1</sup>Department of Respiratory Medicine,

<sup>2</sup>Department of Emergency, Linyi People's Hospital, Linyi, China

**Aim:** To explore the expression and clinical significance of ecotropic viral integration site-1 (EVI1) of lung squamous cell cancer (SCC).

**Methods:** The expression of EVI1 in SCC was detected by immunohistochemistry and the validation cohort was divided into EVI1 high-expression group and low-expression group according to the cutoff of immunohistochemical score. The correlations between EVI1 expression and the clinicopathological factors were analyzed by  $\chi^2$  test. The relation between EVI1 expression and overall survival rate was evaluated by univariate analysis with Kaplan–Meier method. The independent prognostic factor was identified by multivariate analysis with Cox regression model.

**Results:** In this study, the EVI1 high-expression percentage was 32.32% (53/164). EVI1 high expression was significantly associated with a poorer overall 5-year survival rate of SCC ( $P=0.021$ ). Moreover, EVI1 high expression was identified as an independent prognostic factor of SCC, predicting the unfavorable prognosis ( $P=0.013$ ).

**Conclusion:** High expression of EVI1 was significantly associated with a poorer prognosis and it was identified as an independent prognostic factor of SCC.

**Keywords:** ecotropic viral integration site-1, lung squamous cell cancer, biomarker, prognosis, immunohistochemistry, overall survival rate

## Introduction

Lung cancer is becoming a more and more critical public health problem and medical insurance burden, resulting in the largest number of cancer-related deaths worldwide.<sup>1</sup> Approximately 1,590,000 patients die of lung cancer in the world every year.<sup>2</sup> Due to severe air pollution, the mortality and morbidity of lung cancer are much more critical in developing countries like China and India. Pathologically, non-small cell lung cancer (NSCLC) takes up ~80%–85% in lung cancer, including two main subtypes, the adenocarcinoma (AC) and squamous cell cancer (SCC). The former type occupies ~40% and the latter type accounts for 25%–30% in all kinds of lung cancers.<sup>3</sup> Although surgical techniques and adjuvant therapies have improved remarkably, the 5-year overall survival rate of lung cancer is still very unsatisfactory, remaining 10%–15%.<sup>1</sup> There is an urgent need for effective biomarkers of lung cancer, because of the ability to help identify high-risk patients, facilitate the application of optimal treatment, and improve the overall survival rate.

Ecotropic viral integration site-1 (EVI1) is identified as an oncoprotein mostly in hematological malignancies such as acute myelogenous leukemia (AML) and myelodysplastic syndrome (MDS). Frequent activation of *EVI* gene could be observed for intrachromosomal or interchromosomal rearrangements in patients with AML or MDS. EVI1 was also demonstrated to regulate lots of cellular processes in tumorigenesis

Correspondence: Xia Ji  
Department of Respiratory Medicine,  
Linyi People's Hospital, #27, Jiefangdong  
Road, Linyi, Shandong 276003, China  
Tel +86 139 5391 8392  
Fax +86 0539 822 2186  
Email jixialinyi321@126.com

and progression, including cell proliferation, transformation, differentiation, and survival, especially in leukemic cells.<sup>4–8</sup> In solid tumors, such as glioblastoma and prostate cancer, EVII was also reported to be involved in progression or prognosis.<sup>7,9</sup> In SCC, the amplification of chromosome 3q26.2–q29 was frequently observed.<sup>10</sup> This region (3q26.2–q29) included the location of *EVII* gene, indicating the possible oncogenic role of EVII in lung cancer, especially in SCC. But that study focused on the gene level and could not provide the direct evidence of EVII protein as an oncoprotein in SCC.<sup>10</sup> In conclusion, the expression, intracellular location, and function of EVII have not been explored in SCC.

Although SCC and AC are included in NSCLC with a similar treatment strategy and outcome, their biological features are different.<sup>11</sup> Based on the previous indication that the region containing *EVII* gene was amplified in SCC,<sup>10</sup> it was suspected that EVII might be involved in SCC progression or prognosis. Therefore, the expression of EVII was detected in 164 cases of SCC with immunohistochemistry (IHC) and the clinical and prognostic significance of EVII in SCC was evaluated further.

## Patients and methods

### Patients and follow-ups

This study was reviewed and approved by the Ethics Committee of Linyi People's Hospital. The primary cohort consisted of 461 patients diagnosed with SCC in the medical center of Linyi People's Hospital, and the validation cohort was selected from the primary cohort based on the following criteria: 1) available paraffin-embedded tissues; 2) no adjuvant chemotherapy or radiation therapy before or after surgery; and 3) radical section of the tumor. According to the above criteria, a total of 164 SCC patients were selected for the validation cohort. All the samples were obtained from the pathology department with prior written informed consent of patients' family for this study. The tissue samples were sliced and stained with hematoxylin-eosin for double confirmation of diagnosis and selection of IHC area. The pathological tumor-node-metastasis (pTNM) stage of SCC was identified by the seventh American Joint Committee on Cancer/Union for International Cancer Control staging system (2009).

### IHC

The protocol of IHC staining was performed according to previous studies.<sup>12,13</sup> Briefly, the paraffin-embedded SCC samples were deparaffinized with xylene and graded ethanol. Then the slides were incubated in citrate buffer for 30 minutes for antigen retrieval. Blockage of endogenous peroxidase enzyme was achieved by incubation in 3% hydrogen peroxide

in methanol for 20 minutes. Primary anti-EVII antibody (Novus Biologicals, Littleton, CO, USA) with dilution at a ratio of 1:100 was used to incubate the tissues at 4°C overnight, followed by a wash of phosphate-buffered saline. The corresponding biotinylated secondary antibody and streptavidin-peroxidase complex were used to incubate at 37°C for 30 minutes. Finally, the slides were visualized by incubation with 3,3'-diaminobenzidine solution.

### Evaluation of IHC results

According to previous studies, the IHC results were evaluated by the IHC score, which was defined as the product of score of positive cell percentage and the score of staining intensity.<sup>14,15</sup> The score of positive cell percentage was defined as follows: 0 for 10% positive cells; 1 for 10%–30% positive cells; 2 for 30%–50% positive cells; and 3 for ≥50% positive cells. The score of staining intensity was described as follows: 0 for negative staining; 1 for weak staining; 2 for moderate staining; and 3 for strong staining. The total score of IHC was defined as the product of score for staining intensity and the score for positive cells. The total IHC score ranged from 0 to 9, and the cutoff was selected with a receiver operating characteristic curve with the highest sensitivity plus specificity.<sup>16</sup> The cohort was divided into EVII high-expression group and EVII low-expression group, according to the cutoff of EVII IHC score.

### Statistical analysis

SPSS 17.0 software (IBM Corp., Armonk, NY, USA) was used to analyze all the data. The  $\chi^2$  test was used to analyze the correlation between EVII expression and the clinicopathological factors. The Kaplan–Meier method was performed for the survival curve and the log-rank test was used to compare the statistical difference between the subtypes. The Cox regression hazard model was used for multivariate analysis. A *P*-value of <0.05 was considered to be statistically significant.

## Results

### Information of validation cohort

A total of 164 patients diagnosed with SCC were enrolled into our cohort, including 106 male and 58 female patients (Table 1). The average age of patients was 64.5 years. The median postoperative survival time was 22 months and the average survival time was 34 months. As previously described in the “Patients and methods” section, the cohort was divided into EVII high-expression group and EVII low-expression group according to the cutoff of EVII IHC score. In this study, the percentage of EVII high-expression group was

**Table 1** Characteristics of patients with SCC

Characteristics	Number	Percentage
Gender		
Male	106	64.63
Female	58	35.37
Age (years)		
<60	47	28.66
≥60	117	71.34
Tumor diameter (cm)		
≤3	61	37.20
>3	103	62.80
Differentiation		
Well	85	51.83
Moderate	71	43.29
Poor	8	4.88
Lymph node metastasis		
No (N0)	68	41.46
Yes (N1–3)	96	58.54
TNM stage		
I	102	62.20
II	38	23.17
III	24	14.63
Smoking		
No	76	46.34
Yes	88	53.66
EVII		
High	53	32.32
Low	111	67.68

**Abbreviations:** EVII, ecotropic viral integration site-I; SCC, squamous cell cancer.

32.32% (53/164). And EVII was mainly observed in the nucleus of SCC cells, but in some cases it was also expressed in cytoplasm. Representative images of low-expression and high-expression EVII are displayed in Figure 1.

### Correlation between the clinicopathological factors and EVII expression

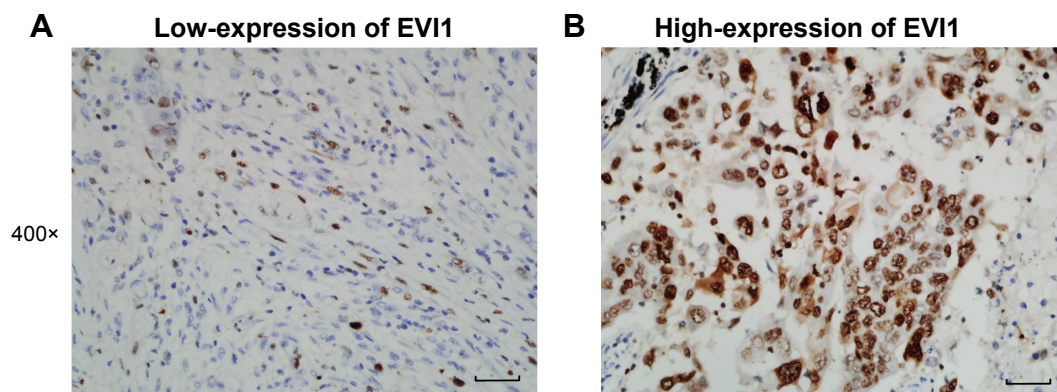
After the cohort was divided into EVII high-expression group and EVII low-expression group, the correlation between

EVII expression and other clinicopathological factors was analyzed by  $\chi^2$  test. The clinicopathological factors included the age, gender, lymphatic status, tumor size, smoking status, tumor differentiation, and pTNM stage of patients (Table 2). Considering that the patients of stage IV already have a distant metastasis and the radical surgery cannot be achieved as usual, the pTNM stage only included stages I–III in this cohort. The analyses of correlation between the clinicopathological factors and EVII expression could help find the potential association of EVII with the progression of SCC. However, there was no significant clinicopathological factor identified to be significantly associated with EVII expression in this study.

### Prognostic value of EVII in SCC

In previous study,<sup>10</sup> the expression of EVII was demonstrated to be much higher in SCC compared with AC. It was suspected that EVII expression might affect the prognosis of SCC and therefore its prognostic significance was evaluated with univariate and multivariate analyses (Table 3). The univariate analysis with Kaplan–Meier method was performed first to analyze the relation between EVII expression and the overall 5-year survival rate. In the univariate analysis, positive lymphatic invasion ( $P<0.001$ , 5-year survival rate: 13.0 vs 38.4 months) and advanced TNM stage ( $P<0.001$ , 5-year survival rate: 0 vs 22.5 vs 32.4 months) were proved to be significantly associated with the poorer prognosis of SCC (Figure 2A and B). Notably, the high expression of EVII could also predict the unfavorable prognosis of SCC ( $P=0.021$ , 18.5 vs 26.6 months) (Figure 2C). No other clinicopathological factor was defined as the prognostic factor in this study.

The multivariate analysis with the Cox regression model was further performed to detect the independent prognostic



**Figure 1** Representative images of high-expression and low-expression EVII detected with IHC.

**Notes:** (A) Representative image of low-expression EVII detected with IHC. EVII was mainly observed in the nucleus and, in some cells, it was expressed in cytoplasm. Scale bar: 50  $\mu$ m. (B) Representative image of high-expression EVII detected with IHC. Scale bar: 50  $\mu$ m.

**Abbreviations:** EVII, ecotropic viral integration site-I; IHC, immunohistochemistry.

**Table 2** Correlation between EVII expression and the clinicopathological parameters

Characteristics	EVII		P-value <sup>a</sup>
	Low	High	
Gender			0.543
Male	70	36	
Female	41	17	
Age (years)			0.504
<60	30	17	
≥60	81	36	
Tumor diameter (cm)			0.391
≤3	44	17	
>3	67	36	
Differentiation			0.533
Poorly	59	26	
Moderately	48	23	
Well	4	4	
Lymph node metastasis			0.738
No	45	23	
Yes	66	30	
TNM stage			0.616
I	68	34	
II	28	10	
III	15	9	
Smoking			0.783
No	50	26	
Yes	61	27	

Note: <sup>a</sup>χ<sup>2</sup> test.

Abbreviation: EVII, ecotropic viral integration site-1.

factors. All the clinicopathological factors were enrolled into the Cox regression model except TNM stage because of its obvious interaction with lymphatic status. In the multivariate analysis, the high expression of EVII was identified as an independent prognostic factor of SCC (hazard ratio [HR] =1.66, 95% confidence interval [CI] =1.11–2.47, *P*=0.013), indicating that the high expression of EVII alone was enough to predict the poorer prognosis of SCC. Besides EVII, lymphatic status was also defined as an independent prognostic factor in this study (HR =2.45, 95% CI =1.60–3.76, *P*<0.001).

### Discussion

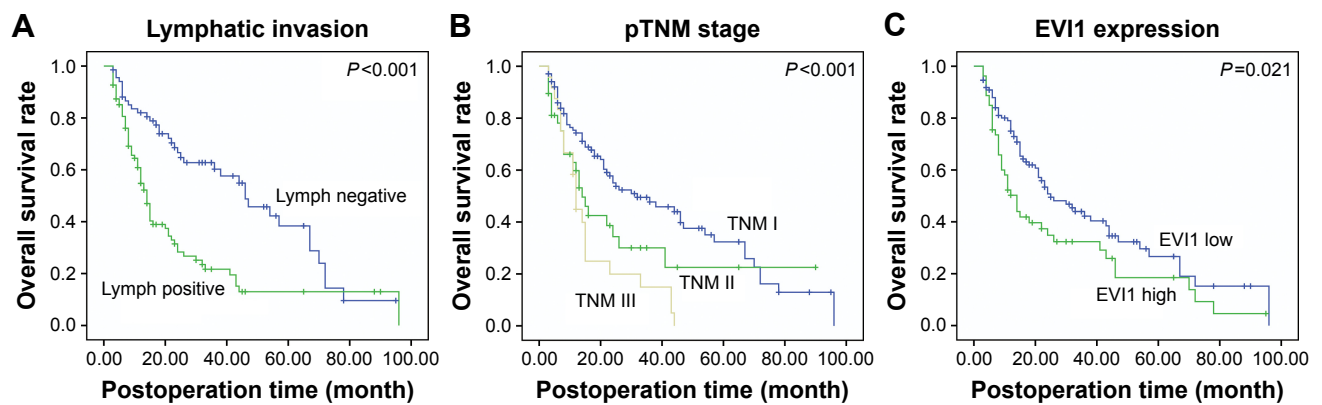
SCC and AC are always classified into one type-NSCLC because of their similar treatment strategy. However, they are different histological types and have significantly different phenotypic properties. In previous studies, the most valuable study inspiring us to carry out the experiments of this study was conducted by Kang et al.<sup>10</sup> They performed high-resolution array-comparative genomic hybridization and identified the differences in the patterns of genomic imbalances between SCC and AC. As a result, they demonstrated that SCC instead of AC has an amplified region of gene in 3q26.2–q29, where the *EVII* gene is located.<sup>10</sup> Many

**Table 3** Prognostic significance of EVII in SCC

Characteristics	Univariate analysis		Multivariate analysis		
	5-year survival rate (%)	P-value <sup>a</sup>	HR	95% CI	P-value <sup>b</sup>
Gender		0.969			0.850
Male	25.4		1		
Female	23.5		0.96	0.63–1.46	
Age (years)		0.301			0.614
<60	22.6		1		
≥60	25.3		1.13	0.71–1.79	
Tumor diameter (cm)		0.896			0.970
≤3	25.5		1		
>3	33.8		0.99	0.65–1.51	
Differentiation		0.431			0.894
Well	15.6		1		
Moderately + poorly	35.0		0.6	0.59–1.36	
Lymph node metastasis		<0.001			<0.001
No	38.4		1		
Yes	13.0		2.45	1.60–3.76	
TNM stage		<0.001			–
I	32.4		–	–	
II	22.5		–	–	
III	0		–	–	
Smoking		0.195			0.149
No	24.0		1		
Yes	24.7		0.74	0.50–1.11	
EVII		0.021			0.013
Low	26.6		1		
High	18.5		1.66	1.11–2.47	

Notes: <sup>a</sup>Log-rank test; <sup>b</sup>Cox regression model. Bold figures denote *P*<0.05. ‘–’ indicates not enrolled in the multivariate analysis.

Abbreviations: CI, confidence interval; EVII, ecotropic viral integration site-1; HR, hazard ratio; SCC, squamous cell cancer.



**Figure 2** Overall survival curves of the lymphatic status, pTNM stage, and EVII expression.

**Notes:** Overall survival curves of (A) positive and negative lymphatic invasion, (B) different pTNM stages, and (C) high- and low-expression EVII were analyzed by the Kaplan–Meier method, and the statistical difference was analyzed by the log-rank test.

**Abbreviations:** EVII, ecotropic viral integration site-I; pTNM, pathological tumor-node-metastasis.

previous studies have proved the oncogenic role of EVII in tumors, especially tumors of hematopoietic system.<sup>17</sup> More and more emerging evidence has indicated the oncogenic role of EVII in solid tumors, including prostate cancer, ovarian cancer, glioblastoma, hepatocellular carcinoma, and so on.<sup>7,9,18</sup> The underlying molecular mechanism of how EVII promotes cancer progression and affects prognosis has not been well elucidated. Yasui et al proved that EVII could antagonize transforming growth factor- $\beta$ -mediated growth inhibition in hepatocellular carcinoma, which promotes the proliferation of hepatocellular carcinoma cells.<sup>18</sup> However, some sporadic studies pointed out the dual role of EVII in cancer progression. For example, Nanjundan et al<sup>19</sup> pointed out that amplification of *EVII* is associated with a favorable prognosis in ovarian cancer. Although that study was based on the detection of DNA copy number, it still reflects the controversial role of EVII in some special cancer types.<sup>19</sup> In conclusion, many studies<sup>20,21</sup> identified EVII as a protein promoting cancer progression, but consensus has not been reached. More experiments need to be performed for validation if new cancer types are involved, such as SCC.

Nowadays, the trend of the precise treatment is becoming more and more prevalent. The theoretical basis of the precise treatment is the individual heterogeneity and diversity of patients. Different cancers may exhibit different varieties and abundance of oncogenes or oncoproteins. In post-operational patients with cancer, detection of these oncogenes or oncoproteins is the first step to direct chemotherapy or target therapy. A large number of predicting or prognostic biomarkers have been explored in lung cancer, but only a few have been demonstrated to be clinically relevant. The unionization of medical centers is necessary to enlarge the sample size and reduce diversity, which would help in getting more

solid results. Moreover, the detection of candidate proteins in situ may be more valuable for prediction. Detecting the expression of proteins in tumor samples directly could reduce the confounding factors from gene modification to messenger RNA transcription. In tumor treatment therapy, the finding of an effective biomarker could be revolutionary, leading to a targeted drug, or even a potential therapy, just like the exploration of human epidermal growth factor receptor 2 (HER2) function in breast cancer resulted in the development of trastuzumab and the target therapy to patients with breast cancer. The finding of this study that the high expression of EVII is an independent prognostic factor could help more specifically stratify SCC high-risk and low-risk patients and help them get different treating therapies. Moreover, along with the elucidation of molecular mechanisms of how EVII leads to the poorer prognosis of SCC, EVII may become a potent drug target, like the revolution triggered by HER2 in breast cancer treatment. The finding of clinical significance of EVII in SCC could inspire more interest on EVII and encourage more experiments to explore the underlying mechanisms of EVII downstream pathways.

In conclusion, the expression of EVII was detected for the first time in 164 cases of SCC samples with IHC, and the cohort was divided into EVII high-expression and low-expression groups according to the score. Furthermore, it was demonstrated that the high expression of EVII was significantly associated with the unfavorable prognosis of SCC and that EVII was an independent prognostic factor of SCC. The findings could trigger interest in the study on the molecular mechanism of EVII as an oncoprotein in SCC and help identify the substrate regulated by EVII. The results could help more specifically stratify SCC high-risk and low-risk patients and help find a potential drug target in SCC treatment.

## Disclosure

The authors report no conflicts of interest in this work.

## References

1. Siegel R, Ma J, Zou Z, Jemal A. Cancer statistics, 2014. *CA Cancer J Clin*. 2014;64(1):9–29.
2. Torre LA, Bray F, Siegel RL, Ferlay J, Lortet-Tieulent J, Jemal A. Global cancer statistics, 2012. *CA Cancer J Clin*. 2015;65(2):87–108.
3. Ettinger DS, Wood DE, Akerley W, et al. Non-small cell lung cancer, version 6. 2015. *J Natl Compr Canc Netw*. 2015;13(5):515–524.
4. Nucifora G, Laricchia-Robbio L, Senyuk V. EVI1 and hematopoietic disorders: history and perspectives. *Gene*. 2006;368:1–11.
5. Heller G, Rommer A, Steinleitner K, et al. EVI1 promotes tumor growth via transcriptional repression of MS4A3. *J Hematol Oncol*. 2015;8:28.
6. Wang H, Schaefer T, Konantz M, et al. Prominent oncogenic roles of EVI1 in breast carcinoma. *Cancer Res*. 2017;77:2148–2160.
7. Queisser A, Hagedorn S, Wang H, et al. Ecotropic viral integration site 1, a novel oncogene in prostate cancer. *Oncogene*. 2017;36:1573–1584.
8. Sato T, Goyama S, Kataoka K, et al. Ev1 defines leukemia-initiating capacity and tyrosine kinase inhibitor resistance in chronic myeloid leukemia. *Oncogene*. 2014;33(42):5028–5038.
9. Hou A, Zhao L, Zhao F, et al. Expression of MECOM is associated with unfavorable prognosis in glioblastoma multiforme. *Onco Targets Ther*. 2016;9:315–320.
10. Kang JU, Koo SH, Kwon KC, Park JW, Kim JM. Identification of novel candidate target genes, including EPHB3, MASP1 and SST at 3q26.2-q29 in squamous cell carcinoma of the lung. *BMC Cancer*. 2009;9:237.
11. Hirsch FR, Suda K, Wiens J, Bunn PA Jr. New and emerging targeted treatments in advanced non-small-cell lung cancer. *Lancet*. 2016;388(10048):1012–1024.
12. Xu YF, Yang XQ, Lu XF, et al. Fibroblast growth factor receptor 4 promotes progression and correlates to poor prognosis in cholangiocarcinoma. *Biochem Biophys Res Commun*. 2014;446(1):54–60.
13. Xu Y, Yang X, Li Z, et al. Sprouty2 correlates with favorable prognosis of gastric adenocarcinoma via suppressing FGFR2-induced ERK phosphorylation and cancer progression. *Oncotarget*. 2017;8:4888–4900.
14. Xu YF, Ge FJ, Han B, et al. High-mobility group box 1 expression and lymph node metastasis in intrahepatic cholangiocarcinoma. *World J Gastroenterol*. 2015;21(11):3256–3265.
15. Liu H, Zhang Q, Li K, et al. Prognostic significance of USP33 in advanced colorectal cancer patients: new insights into  $\beta$ -arrestin-dependent ERK signaling. *Oncotarget*. 2016;7:81223–81240.
16. Liu H, Xu Y, Zhang Q, et al. Correlations between TBL1XR1 and recurrence of colorectal cancer. *Sci Rep*. 2017;7:44275.
17. Fenouille N, Bassil CF, Ben-Sahra I, et al. The creatine kinase pathway is a metabolic vulnerability in EVI1-positive acute myeloid leukemia. *Nat med*. Epub 2017 Feb 13.
18. Yasui K, Konishi C, Gen Y, et al. EVI1, a target gene for amplification at 3q26, antagonizes transforming growth factor- $\beta$ -mediated growth inhibition in hepatocellular carcinoma. *Cancer Sci*. 2015;106(7):929–937.
19. Nanjundan M, Nakayama Y, Cheng KW, et al. Amplification of MDS1/EVI1 and EVI1, located in the 3q26.2 amplicon, is associated with favorable patient prognosis in ovarian cancer. *Cancer Res*. 2007;67(7):3074–3084.
20. Hinai AA, Valk PJ. Review: Aberrant EVI1 expression in acute myeloid leukaemia. *Br J Haematol*. 2016;172(6):870–878.
21. Wieser R. The oncogene and developmental regulator EVI1: expression, biochemical properties, and biological functions. *Gene*. 2007;396(2):346–357.

### OncoTargets and Therapy

### Publish your work in this journal

OncoTargets and Therapy is an international, peer-reviewed, open access journal focusing on the pathological basis of all cancers, potential targets for therapy and treatment protocols employed to improve the management of cancer patients. The journal also focuses on the impact of management programs and new therapeutic agents and protocols on

Submit your manuscript here: <http://www.dovepress.com/oncotargets-and-therapy-journal>

patient perspectives such as quality of life, adherence and satisfaction. The manuscript management system is completely online and includes a very quick and fair peer-review system, which is all easy to use. Visit <http://www.dovepress.com/testimonials.php> to read real quotes from published authors.

Dovepress