

Electrospun nanofiber blend with improved mechanical and biological performance

Anderson Oliveira Lobo,¹⁻⁴
Samson Afewerki,^{3,4} Mirian
Michele Machado de Paula,⁵
Paria Ghannadian,⁵ Fernanda
Roberta Marciano,^{2,5} Yu Shrike
Zhang,^{3,4} Thomas Jay Webster,⁵ Ali
Khademhosseini^{3,4,6-10}

¹LIMAV-Interdisciplinary Laboratory for Advanced Materials, PPGCM-Materials Science and Engineering Graduate Program, UFPI-Federal University of Piauí, Teresina, Piauí, CEP 64049-550, Brazil; ²Institute of Science and Technology, Brasil University, São Paulo, CEP 08230-030, Brazil; ³Division of Engineering in Medicine, Department of Medicine, Brigham and Women's Hospital, Harvard Medical School, Cambridge, MA 02139, USA; ⁴Harvard-MIT Division of Health Sciences and Technology, Massachusetts Institute of Technology, Cambridge, MA 02139, USA; ⁵Department of Chemical Engineering, Northeastern University, Boston, MA 02115, USA; ⁶Department of Bioengineering, Department of Chemical and Biomolecular Engineering, Henry Samueli School of Engineering and Applied Sciences, University of California-Los Angeles, Los Angeles, CA 90095, USA; ⁷Department of Radiology, David Geffen School of Medicine, University of California-Los Angeles, Los Angeles, CA 90095, USA; ⁸Center for Minimally Invasive Therapeutics (C-MIT), University of California-Los Angeles, Los Angeles, CA 90095, USA; ⁹California NanoSystems Institute (CNSI), University of California-Los Angeles, Los Angeles, CA 90095, USA; ¹⁰Department of Bioindustrial Technologies, Konkuk University, Seoul 143-701, Republic of Korea

Correspondence: Anderson Oliveira Lobo Interdisciplinary Laboratory for Advanced Materials, Materials Science and Engineering Graduate Program, UFPI-Federal University of Piauí, Teresina, PI, CEP 64049-550, Brazil Email lobo@ufpi.edu.br

Samson Afewerki
Division of Engineering in Medicine,
Department of Medicine, Brigham and
Women's Hospital, Harvard Medical School,
Cambridge, MA 02139, USA
Email samson.afewerki20@gmail.com

Background: Here, electrospun fibers based on a blend of polycaprolactone (PCL), poly(ethylene glycol) (PEG), and gelatin methacryloyl (GelMA) were developed. The careful choice of this polymer combination allowed for the preparation of a biomaterial that preserved the mechanical strength of PCL, while at the same time improving the hydrophilicity of the blended material and human osteoblast maturation.

Methods: The morphology, chemical structure, wettability, and mechanical properties before and after UV photocrosslinking were evaluated. Furthermore, human osteoblasts (hFOB) were cultivated for up to 21 days on the scaffolds, and their potential to upregulate cell proliferation, alkaline phosphatase (ALP) activity, and calcium deposition were investigated.

Results: Contact angle measurement results showed that the developed scaffolds presented hydrophilic properties after PEG and GelMA incorporation before (25°) and after UV photocrosslinking (69°) compared to pure PCL (149°). PCL:PEG:GelMA-UV displayed a slight increase in mechanical strength (elastic modulus ~37 MPa) over PCL alone (~33 MPa). Normally, an increase in strength of fibers leads to a decrease in elongation at break, due to the material becoming less deformable and stiffer, thus leading to breaks at low strain. This behavior was observed by comparing PCL (elongation at break ~106%) and PCL:PEG:GelMA-UV (~50%). Moreover, increases in ALP activity (10-fold at day 14) and calcium deposition (1.3-fold at day 21) by hFOBs were detected after PEG and GelMA incorporation after UV photocrosslinking compared to pure PCL. Ultrathin and hydrophilic fibers were obtained after PEG and GelMA incorporation after UV photocrosslinking, but the strength of PCL was maintained. Interestingly, those ultrathin fiber characteristics improved hFOB functions.

Conclusion: These findings appear promising for the use of these electrospun scaffolds, based on the combination of polymers used here for numerous orthopedic applications.

Keywords: biomaterials, electrospinning, human osteoblasts, mechanical properties, wettability, bone regeneration

Introduction

Ultrathin scaffolds with desirable mechanical and wettability properties for tissue engineering and biomedical applications remain challenging.¹ These properties are able to control biological interactions with the scaffolds such as cell adhesion (controlling specific proteins), proliferation, and differentiation.² In this context, polycaprolactone (PCL) has been largely used in bone tissue engineering applications.³ PCL has favorable mechanical properties compared to other polyesters and has good biocompatibility. PCL has a tensile strength ranging from 10.5 to 16.1 MPa and a tensile yield strength between 8.2 and 10.1 MPa. For electrospun PCL, the mean value of the Young's modulus has been reported to be 3.5–6 MPa, with an average value of the strain at break of 150–190%.^{4,5} However, PCL exhibits hydrophobic characteristics and a long degradation time, which may reduce

cell adhesion and limit applications where faster erosion of the matrices is needed. For this reason, the development of new strategies for improving its hydrophilicity, degradability, osteogenesis, and controllable mechanical properties for orthopedic applications is needed.^{6–8}

The optimal scaffold for bone regeneration should display sufficient mechanical properties to support bone tissue requirements (Young's modulus of cortical bone = 15–20 GPa and 0.1–2 GPa for cancellous bone),⁹ hydrophilicity to improve the infiltration of cells favoring the transportation of water, nutrients, and waste, as well to promote osteogenesis.¹⁰

One strategy to design such a biomaterial that fulfills the above requirements is to combine different polymers in a way that synergizes their desirable, unique properties without reducing their efficacy. Such materials can be used for the fabrication of biomaterial fibers (to mimic the extracellular matrix [ECM] and enhance the surface contact) for bone tissue regeneration through the employment of electrospinning.¹¹ There are several advantages with this approach compared to other methods, specifically for preparing polymer blends, such as reproducibility, low cost, and high yield.¹² Electrospinning is simple and efficient, since a common solvent can be used to dissolve different polymers, and the solvent can be easily evaporated due to applied high voltage.¹²

An additional polymer that is of great interest in this context is poly(ethylene glycol) (PEG) that has distinct properties such as biocompatibility, water absorption, hydrophilicity, and the ability to reduce protein adsorption.¹³ There have been several reports on the combination of PCL and PEG,^{14,15} PCL and gelatin,^{4,5,8,16} and PCL/PEG/gelatin for bone tissue regeneration (in these examples noncrosslinkable gelatin was employed).¹⁷ These reports have described that electrospun PCL, PEG, and gelatin fibers and their combinations improved the osteogenesis and calcification of the matrix, induced osteoblast maturation and promoted bone regeneration; however, the described combinations resulted in a lower tensile strength (ranging from 2 to 35 MPa) compared to scaffolds for bone regeneration.^{5,8,16} For example, Tiwari et al¹⁸ combined PCL and PEG to produce scaffolds, and obtained an average tensile stress of up to 29 MPa.

The produced scaffold should also promote cell adhesion for better interaction with the host tissue. Gelatin, a natural polymer, is a good candidate for promoting cell adhesion due to a similarity to the ECM.¹⁹ A photocrosslinkable gelatin methacryloyl (GelMA) material has been extensively used

as a hydrogel scaffold for biomaterial applications.¹⁹ GelMA has a chemical similarity to numerous ECMs and has been shown to improve vascularization, water absorption, and permeability of proteins, and possess a fast and controlled degradability.²⁰ However, GelMA has relatively weak mechanical properties for bone tissue engineering applications. To overcome this limitation, GelMA may be combined with other materials for the design of scaffolds suitable for those applications.^{21,22} The measured Young's modulus for GelMA fibers alone (GelMA [10 wt%], 70% degree of methacryloyl modification, 2–10 min of UV crosslinking time) ranges from 290 to 350 kPa and its elongation at break is between 51 and 67%.²³ Herein, we combined PCL, PEG, and GelMA, followed by an electrospinning process for the design of fibrous blend scaffolds, as a suitable candidate for bone tissue engineering. The produced ultrathin fibers showed hydrophilicity and high mechanical strength while *in vitro* osteoblast functions were improved. Our study, thus, showcases the applications of this new scaffolding system for bone tissue regeneration, with a potential of extending to engineering other functional tissue types.

Results and discussion

The GelMA was prepared by methacryloyl substitution of gelatin, and the degree of substitution was determined using proton nuclear magnetic resonance (¹H NMR) analysis (~70% yield, 66% degree of substitution, Figure 1A and B).²⁴ Moreover, it is widely known that low molecular weight PEG alone is challenging to electrospin.²⁵ However, this can be circumvented by a combination with other biomaterials; moreover, low amounts of PEG can be used to introduce hydrophilicity.²⁶ Notably, since PEG is known to be cell-repellent, an optimal concentration between PEG and GelMA is an important balance between hydrophilicity and cell adhesion. However, it has previously been reported that only an addition of 5 w/v% GelMA to PEG (20 w/v%) improved cell adhesion.²⁴

The prepared solutions and their concentrations for electrospinning are depicted in Figure 1C, based on previous reports.¹⁸ Electrospinning of a PCL, PEG, and GelMA blend, followed by further crosslinking, provides a covalently-bonded hybrid mat, as illustrated in Figure 1D.

The morphology was investigated through scanning electron microscopy (SEM) analysis (Figure 2). The microfibrous mats made from PCL displayed fiber diameters of $2.63 \pm 0.78 \mu\text{m}$ (Figure S1A–C and J). As expected, the electrospinning of pure PEG did not produce fibers, instead only beads were obtained (Figure S1G–I). However, when

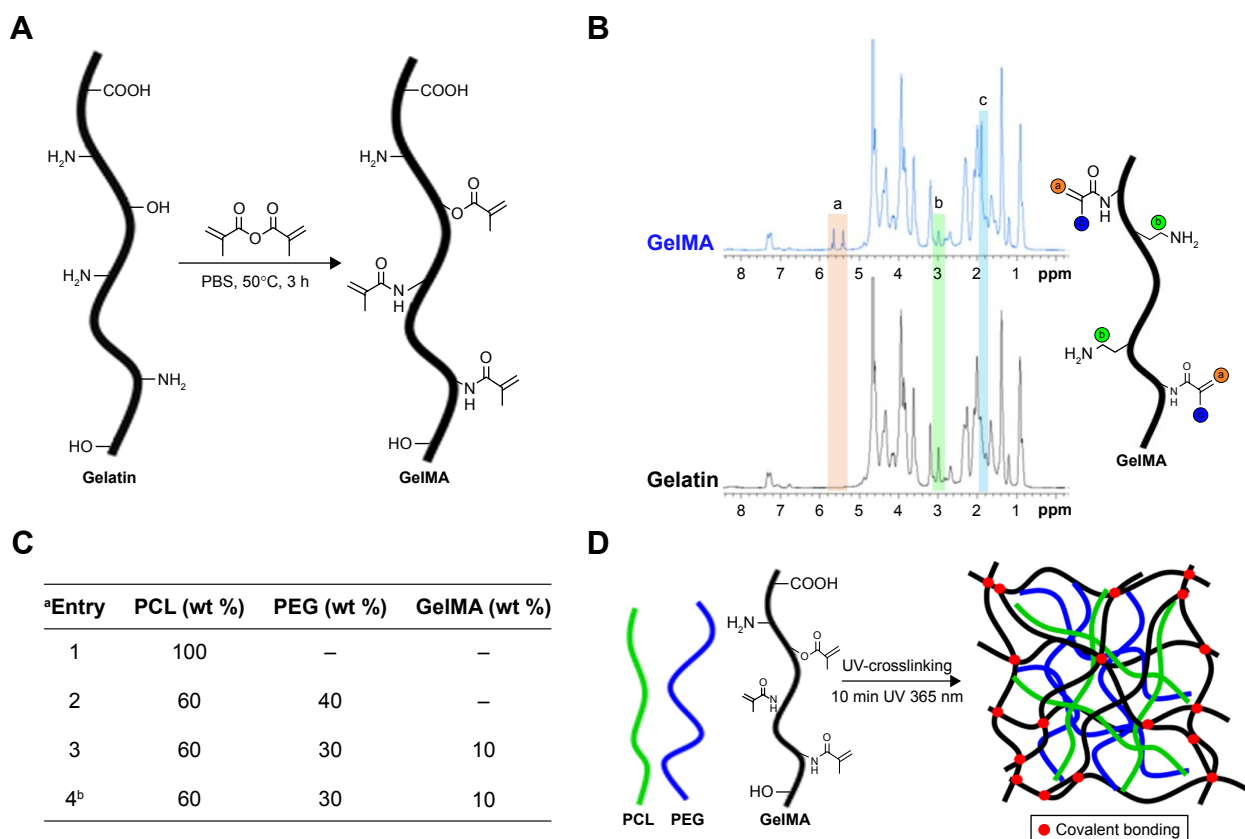


Figure 1 (A) Preparation of GelMA. Gelatin containing primary amino ($-\text{NH}_2$) and hydroxyl ($-\text{OH}$) groups was reacted with methacrylic anhydride to add methacryloyl pendant groups. (B) $^1\text{H-NMR}$ of the prepared GelMA compared to gelatin. (C) The different solutions prepared for the photocrosslinking step after electrospinning. (D) Scheme illustrating the chemistry and possible interactions between the electrospun polymers after photocrosslinking.

Notes: ^aFor all the solutions hexafluoroisopropan-2-ol (HFIP) was employed and the final volume was 5 mL. ^bThe photoinitiator lithium phenyl (2,4,6-trimethylbenzoyl) phosphinate was added to the mixture to crosslink the prepolymer.

Abbreviations: GelMA, gelatin methacryloyl; $^1\text{HNMR}$, proton nuclear magnetic resonance.

PCL and PEG were combined, ultrathin fibrous mats were obtained (Figure 2A–C), which presented diameter distributions of $0.39 \pm 0.14 \mu\text{m}$ (Figure 2J). The electrospun mats made of pure GelMA provided ultrathin smooth fibers with a diameter of $0.18 \pm 0.02 \mu\text{m}$ (Figure S1D–F and K) and, by combining PCL, PEG, and GelMA, ultrathin fibers with a similar morphology were obtained (Figure 2D–F) with a fiber diameter of $0.42 \pm 0.17 \mu\text{m}$ (Figure 2K). Importantly, subsequent UV crosslinking of the fiber changed neither its morphology (Figure 2G–I) nor diameter ($0.43 \pm 0.17 \mu\text{m}$, Figure 2L).

Fourier-transform infrared spectroscopy (FTIR) analysis identified functional groups and interactions of the polymers within the fibers (Figure 3A and B). The main peaks for the PCL:PEG:GelMA electrospun mats related to each polymer component were clearly identified (Figure 3A and B). The main peaks referred to PCL were indexed, as follows: $1,724 \text{ cm}^{-1}$ ($\text{C}=\text{O}$ stretching), $1,342 \text{ cm}^{-1}$ (CH_2 , bending), $1,240 \text{ cm}^{-1}$ (asymmetric $\text{C}-\text{O}-\text{C}$ stretching), $1,190 \text{ cm}^{-1}$ ($\text{O}-\text{C}-\text{O}$ stretching), $1,170 \text{ cm}^{-1}$ ($\text{C}-\text{O}-\text{C}$ stretching),

$1,157 \text{ cm}^{-1}$ ($\text{C}-\text{C}$ stretching), and 731 cm^{-1} ($-(\text{CH}_2)_n$, bending).^{26,27} The GelMA presence was observed due to the presence of amide I ($1,637 \text{ cm}^{-1}$, $\text{C}=\text{O}$ stretching), $1,634 \text{ cm}^{-1}$ (methacryloyl group, $\text{C}=\text{C}$, stretching), amide II ($1,529 \text{ cm}^{-1}$, $\text{N}-\text{H}$ bending), and amide III ($1,448 \text{ cm}^{-1}$, vibrations of $\text{C}-\text{N}$ and $\text{N}-\text{H}$).²⁸ The presence of PEG was also identified: 839 cm^{-1} ($\text{C}-\text{H}$, bending), 951 cm^{-1} (CH_2 , rocking), and $1,115 \text{ cm}^{-1}$ ($\text{C}-\text{O}$, stretching).^{29,30}

FTIR was also used to examine the potential differences after UV crosslinking (Figure 3B). The band at $1,634 \text{ cm}^{-1}$ could be related to the presence of $\text{C}=\text{C}$ double bonds in the scaffolds before UV irradiation (Figure 3B).³¹ Nevertheless, this band disappeared after UV irradiation, indicating the success of the crosslinking procedure (Figure 3B). The effect of the formation of a physical network with increasing subsequent chemical crosslinking efficiency has also been reported previously.²¹

Additionally, the mechanical properties of the electrospun scaffolds before and after crosslinking were investigated (Figure 3C and D). The designed PCL:PEG:GelMA

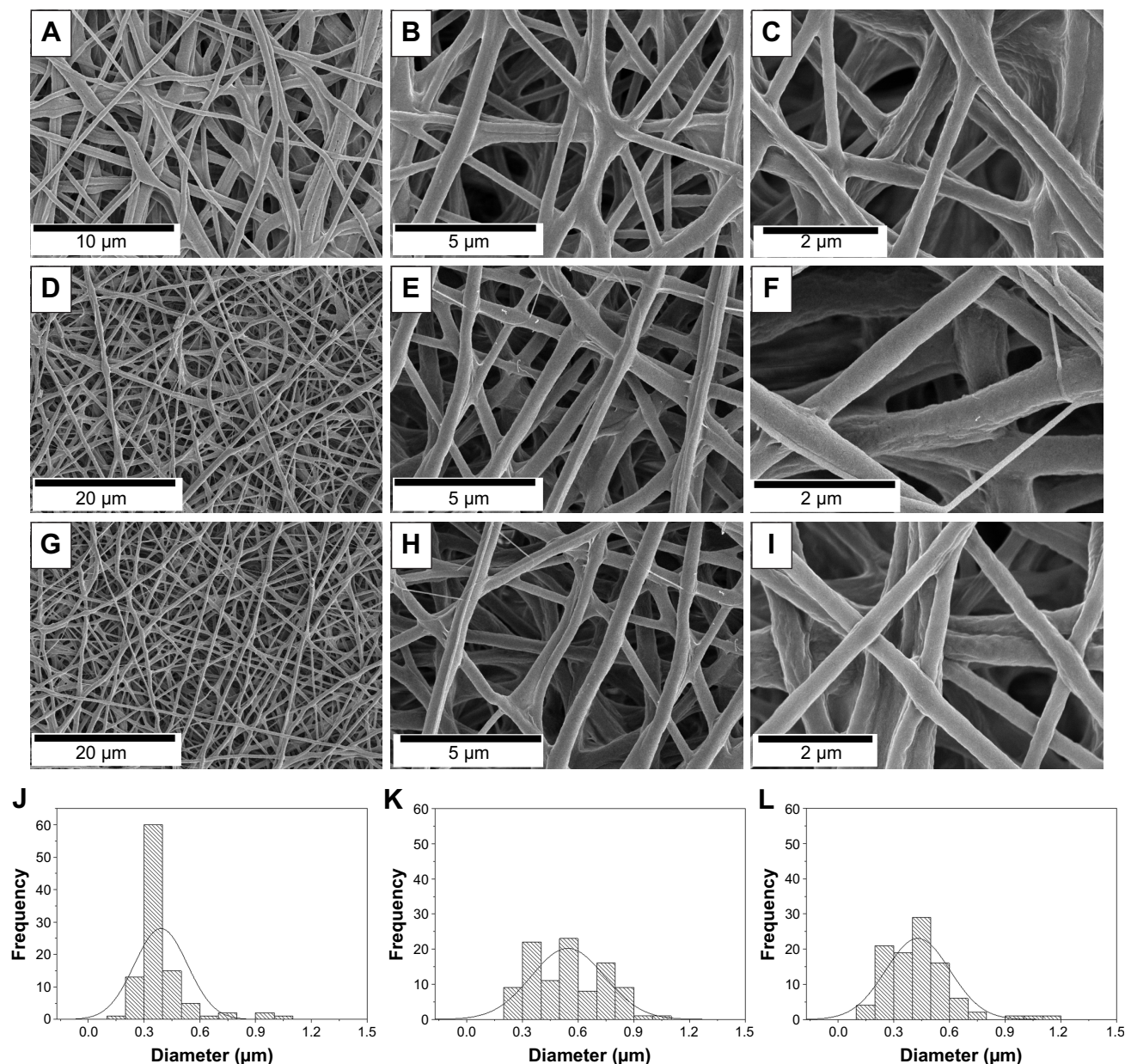


Figure 2 (A–I) Morphology of electrospun fibers from the SEM analysis: **(A–C)** PCL-PEG, **(D–F)** PCL-PEG-GelMA, and **(G–I)** PCL-PEG-GelMA-UV fibers. **(J–L)** The distribution of the fiber diameters for **(J)** PCL-PEG, **(K)** PCL-PEG-GelMA, and **(L)** PCL-PEG-GelMA-UV fibers.

Abbreviations: GelMA, gelatin methacryloyl; PCL, polycaprolactone; PEG, poly(ethylene glycol); SEM, scanning electron microscopy.

scaffold showed a high elastic modulus after UV photocrosslinking compared to the other scaffolds without photocrosslinking, resulting in an elastic modulus of ~ 37 MPa (PCL:PEG:GelMA-UV), which was in a similar range to that of PCL (~ 33 MPa). In contrast, the measured elastic moduli for the PCL:PEG scaffold were ~ 21.2 MPa and ~ 18.85 MPa for the PCL:PEG:GelMA scaffolds without photocrosslinking (Figure 3C).

As expected, the elongation at break for the PCL:PEG:GelMA-UV mats ($\sim 50\%$) was lower than those of all the other samples, probably due to the stiffer polymer obtained

after UV crosslinking (Figure 3D). However, the PCL:PEG blends presented a superior elongation property ($\sim 283\%$) than that of pure PCL ($\sim 106\%$) (Figure 3D). However, after incorporation of GelMA, the value decreased by a factor of 2 ($\sim 144\%$), most likely due to the fragility of gelatin compared to PCL and PEG.

Recently, Tiwari et al¹⁸ measured similar values between PCL and PCL:PEG mats. However, herein, the mechanical properties measured after the incorporation of GelMA and further UV photocrosslinking (PCL:PEG:GelMA-UV) provided a value 3-fold greater than that already reported

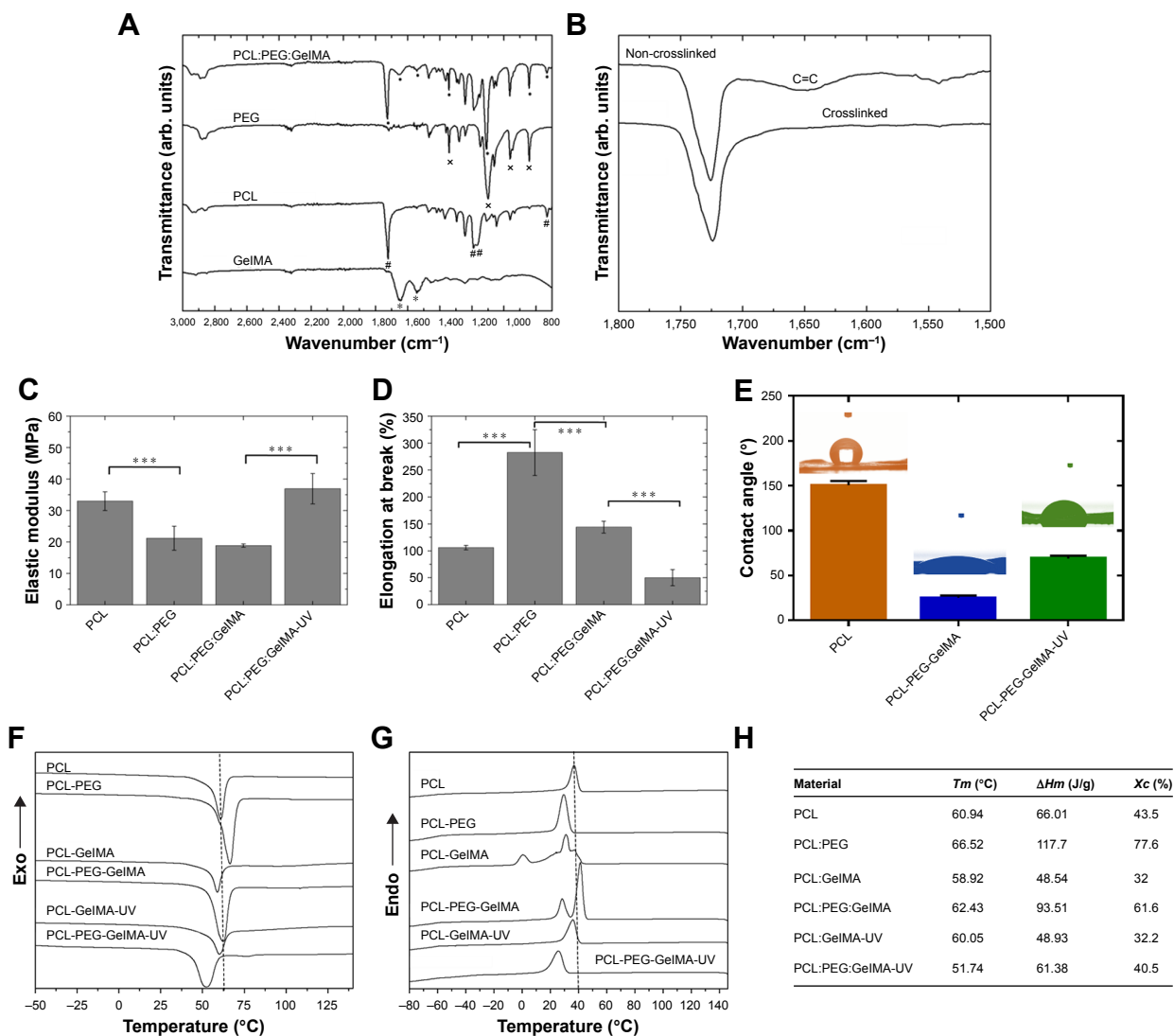


Figure 3 (A, B) FTIR spectra collected of the developed scaffolds: (A) indexed peaks identified by different symbols, (B) C=C bond before and after UV irradiation. (C, D) The mechanical analysis of the electrospun scaffolds: (C) elastic modulus and (D) elongation at break. The values are expressed as means and SDs (***) $P < 0.001$, $n=3$). (E) The contact angles measured and images of the water drops on the PCL, PCL:PEG:GelMA, and PCL:PEG:GelMA-UV. (F, G) The DSC thermograms of the fibers: (F) first heating cycle and (G) first cooling cycle. (H) The thermal analysis of all the fiber components analyzed providing the T_m (crystalline melting temperature), ΔH_m (melting enthalpy), ΔH_c (crystallization enthalpy) and X_c (fiber crystallinity). All the calculated X_c belongs to the PCL in the mat, thus only the 100% ΔH_m = melting enthalpy of a 100% crystalline PCL employed.

Abbreviations: FTIR, Fourier-transform infrared spectroscopy; GelMA, gelatin methacryloyl; PCL, polycaprolactone; DSC, differential scanning calorimetry; PEG, poly(ethylene glycol).

for bone tissue engineering applications (Figure 3C).^{32–38} Scaffolds based on different amounts of PCL, GelMA, and gelatin have been reported by Correia et al.³⁹ They had covered PCL mats with GelMA and gelatin previously, but here our process is more homogenous and easy to reproduce, because PCL and GelMA were electrospun together, followed by photocrosslinking, which greatly improves the mechanical properties of the scaffolds. Clearly, the prepared scaffolds presented a good synergy between PCL and GelMA. Recently, Zhao et al.²³ electrospun a GelMA solution and obtained ultrathin fibers (700–1,400 nm). The authors also investigated the mechanical properties of GelMA mats before and after UV curing. Herein, we combined PCL,

PEG, and GelMA and compared the crosslinking with/without immersion of mats into the photoinitiator solution. The electrospun mats produced here had superior properties compared to other similar studies due to our unique combination of the selected polymers. Specifically, there was a clear improvement of the mechanical strength for our study (our results: 36.95 ± 4.85 MPa; reported results: 400 kPa).³⁹

Moreover, the hydrophilicity of the designed electrospun was improved by the addition of PEG and GelMA before and after UV comparable to PCL (149°) (Figure 3E). In this aspect, the hydrophilicity can be monitored by the comparison of the wettability and surface energy of the material, where a higher surface energy generally corresponds to a

lower contact angle.⁴⁰ The uncrosslinked material provided a water contact angle (CA) of $\sim 25^\circ$ and a surface energy of 71.4 mJ/m^2 , while crosslinking resulted in a CA of $\sim 69^\circ$ and surface energy of 53.3 mJ/m^2 (Table S2).

It is known that a surface is hydrophobic when the $\text{CA} > 90^\circ$ and is hydrophilic when $\text{CA} < 90^\circ$.⁴¹ Correia et al³⁹ coated GelMA, PEG acrylate (PEGA), and PEG diacrylate (PEGDA) onto PCL mats for the preparation of a more hydrophilic material, where they obtained CA that ranged from $\sim 40^\circ$ to 120° . Different in our approach, we perform a direct incorporation of the various biomaterials, whereas in the presented coating strategy, it required an extra step for the addition of GelMA. Prominently, coating processes can sometimes be limited due to debonding of the coating, mechanical fragility, and instability of the material, thus all avoided by direct incorporation.⁴²

Zhao et al²³ obtained a highly porous and water absorbable GelMA and GelMA:PLGA scaffolds suitable for wound healing applications. In our case, we improved the wettability and mechanical properties of the scaffolds favoring the adhesion and growth of osteoblasts.

Differential scanning calorimetry analyzed the thermal parameters, such as crystallization temperature (T_c), melting temperature (T_m), enthalpy of fusion (ΔH_m), enthalpy of crystallization (ΔH_c), and degree of crystallinity (X_c) of the materials (Figure 3F–H). The crystallization behavior of PCL after the addition of GelMA slightly shifted to a higher temperature, and X_c , ΔH_c , and ΔH_m increased significantly from 36.6%, 39.71, and 93.84 J/g to 83.2%, and 69.01 – 142.9 J/g , respectively. However, the degree of crystallinity of the sample containing both PEG and GelMA was similar to pure PCL (Figure 3F and G). Noteworthy, after incorporation of PEG, extra peaks were obtained in the cooling cycle corresponding to the PEG moiety. It has previously been reported that a blend between PCL and PEG is highly dependent on the amount of each component in the blend and, in some cases, immiscibility and phase separation between PCL and PEG can occur, confirmed by extra peaks.⁴¹

In comparison, after crosslinking, a shift to a lower temperature was immediately observed (Figure 3F and G), however, all of the parameters (X_c , ΔH_c , and ΔH_m) increased significantly comparable to the PCL fibers ($X_c=73.5\%$ and 85.8% , $\Delta H_c=47.69$ and 50.44 J/g , and $\Delta H_m=113$ and 126.6 J/g , respectively, Figure 3H). The result clearly confirms that the crosslinking induces crystallinity in the blend fibers, due to the improved network between the polymers (Figure 3H).

The biological activity (alkaline phosphatase [ALP] activity, calcium deposition, and cell proliferation) of the fabricated electrospun mat was studied for potential applications in bone tissue regeneration (Figure 4A–C). ALP is a widely used and a classical biomarker to identify osteoblast differentiation (ECM mineralization). Therefore, when high expression is observed, it can be correlated to bone-forming protein expression during osteogenic differentiation, inducing mineralization promoted by a scaffold.⁴³ Interestingly, the groups containing GelMA increased ALP activity, calcium deposition, and osteoblast proliferation to a larger extent compared to pure PCL (Figure 4A–C). The scaffolds showed an increase in ALP expression compared to PCL ($P < 0.0001$, Figure 4A). At day 7, PCL:PEG:GelMA scaffolds had higher values compared to pure PCL and PCL:PEG ($P < 0.0001$).

The PCL scaffolds partially induced extracellular calcification at days 14 and 21. On the other hand, when PEG and GelMA were added, the values increased independent of the time points ($P < 0.01$). This highlights the favorable synergistic effect of the $-\text{OH}$ groups on PEG and favorable amino acid moieties present in GelMA. At day 21, the ALP activity of the cells on the PCL:PEG scaffolds was 4-fold higher than that of the cells on pure PCL. At the same time (day 21), the ALP activity of cells on the PCL:PEG:GelMA scaffolds were 1.3-fold higher than that of the cells on the PCL:PEG scaffolds, and ~ 5 -fold higher than that of the cells on the pure PCL scaffolds.

Additionally, Figure 4B illustrates the calcium deposition for all the analyzed groups. Calcium deposition is considered the final stage of osteoblast maturation to form bone. This may be because of the hydrophilic behavior associated with the ECM-like components in the GelMA chemical structure. It is also known that lower ALP levels are related to higher calcium deposition due to the last stage of maturation.⁴⁴ This behavior matched the lowered ALP activity obtained up to 14 days, while the calcium deposition increased at the same time point (Figure 4A and B). Moreover, the lower value measured for the control (cells in the absence of any scaffold) further supports the hypothesis that our scaffold promotes calcium deposition. After days 7, 14, and 21, all the groups analyzed induced high levels of calcium deposition.

Cell proliferation was measured, and all the groups containing GelMA and PEG were compared to pure PCL nanofibers (Figure 4C). An increase in cell proliferation was observed, independent of the scaffolds. However, an enhancement was observed for groups containing PEG compared to pure PCL for all time points (Figure 4C). After

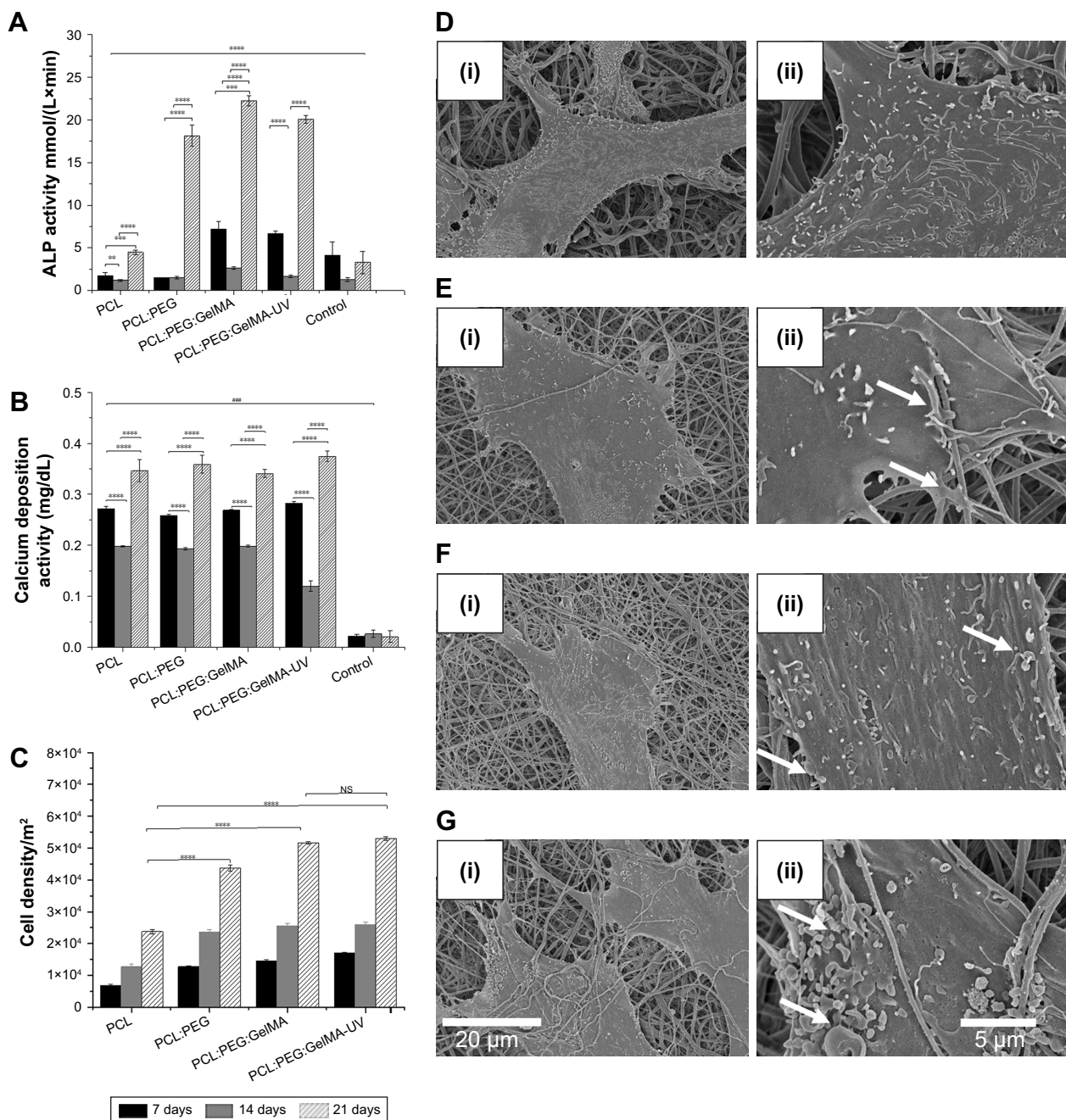


Figure 4 (A) ALP activity showed an increase of calcification of the extracellular matrix after inclusion of GelMA. (B) Calcium deposition demonstrated a further influence of GelMA to enhance the functions of osteoblasts. (C) MTS assay showing that osteoblastic cells were further influenced by hydrophilic properties after inclusion of PEG and GelMA. Data plotted in mean and SD (N=5). Values of $P < 0.01$ were considered significant. Data were normalized by the cells, and the y-axis was multiplied by 10^4 . For the ALP and calcium deposition, the data were compared to control (cells) and between each time. For cellular proliferation assays, the data were compared to pure PCL. N=5. $**P < 0.01$, $***P < 0.001$, and $****P < 0.0001$ mean statistical differences. SEM of hFOB cells cultivated on scaffolds after 7 days. (D) (i) PCL and (ii) magnified view. (E) (i) PCL-PEG and (ii) magnified view. (F) (i) PCL-PEG-GelMA without UV crosslinking and (ii) magnified view. (G) (i) PCL-PEG-GelMA after UV crosslinking and (ii) magnified view. The cells are spreading on all produced scaffolds presenting filopodium and cytoplasmic extension.

Abbreviations: ALP, alkaline phosphatase; GelMA, gelatin methacryloyl; hFOB, human osteoblasts; MTS, (3-(4,5-dimethylthiazol-2-yl)-5-(3-carboxymethoxyphenyl)-2-(4-sulfophenyl)-2H-tetrazolium); NS, no significance; PCL, polycaprolactone; PEG, poly(ethylene glycol); SEM, scanning electron microscopy.

GelMA incorporation, an increase in proliferation of up to 2.5-fold was observed compared to pure PCL for all the time points ($P < 0.05$). Cell proliferation has a strong positive correlation with the hydrophilicity of a surface,⁴⁵ and therefore the groups containing PEG and GelMA (each greatly

hydrophilic) resulted in more cell proliferation compared to pure PCL (hydrophobic).

It has previously been reported that GelMA and PEG induced ECM calcification.^{46–52} For example, Turkkan et al⁵³ showed that electrospun PCL:PEG with hydroxyapatite

induced in vitro osteoblast mineralization. Tiwari et al¹⁸ electrospun different combinations of PCL and PEG and evaluated their potential to induce in vitro mineralization. However, the authors only investigated biocompatibility and in vitro mineralization using simulated body fluid.¹⁸ Differently, herein we investigated the ability of new scaffolds, fabricated from a unique combination of PCL:PEG:GelMA, to induce in vitro ECM calcification and calcium deposition when cultivated with human osteoblasts (hFOB).

The cellular adhesion of hFOBs were evaluated by SEM (Figure 4D–G). The presence of a significant number of filopodium was clearly noticed, independent of the type of scaffolds analyzed (depicted in Figure 4E(ii), F(ii), and G(ii)). The hydrophobicity of PCL scaffolds did not inhibit hFOB adhesion (Figure 4D). The same behavior was observed after incorporation of PEG (Figure 4E, more hydrophilic). Meanwhile, after inclusion of GelMA, more filopodia were noticed (Figure 4F), indicating monolayer formation, especially after UV crosslinking (Figure 4E). Additionally, the ultrathin scaffold obtained after incorporation of PEG and GelMA could also possibly be another factor promoting cellular adhesion, where microfibrillar fibers were obtained with only PCL (Figures 2A–C and S1A–C).

Conclusion

In summary, we report the preparation of electrospun scaffolds by a blend of PCL:PEG:GelMA polymers. Compared to previous reports, an improvement in efficacy was obtained due to the synergy of the desired properties of each polymer, including enhanced mechanical properties (stiffness) due to the presence of PCL, hydrophilicity due to the presence of PEG, and upregulation of hFOB cell functions from the incorporation of GelMA. The designed biomaterial also resulted in improved mechanical strength comparable to pure PCL. Furthermore, enhanced ALP activity, calcium deposition, and proliferation were obtained for our designed electrospun nanofibers compared to only PCL nanofibers.

Acknowledgments

AOL and FRM would like to thank the Sao Paulo Research Foundation (FAPESP, grants numbers: AOL – 2015/09697-0 and FRM – 2016/00575-1), Coordination for the Improvement of Higher Education Personnel (CAPES, grant numbers AOL – 88881.120138/2016-01 and FRM – 88881.120221/2016-01), Brazilian National Council for Scientific and Technological Development (CNPq, AOL – 303752/2017-3 and FRM – 304133/2017-5), and to the Universidade Brasil for scholarships. SA gratefully

acknowledges financial support from the Sweden–America Foundation (The Family Mix Entrepreneur foundation), Olle Engkvist Byggmästare Foundation, and Swedish Chemical Society (Bengt Lundqvist Memory Foundation) for a postdoctoral fellowship. AK acknowledges funding from the National Institutes of Health (AR057837, AR066193, EB022403, EB021148, HL137193, EB021857, AR070647, EB023052, CA214411, and EB024403). YSZ acknowledges funding from the National Institutes of Health (K99CA201603, R21EB025270, R21EB026175).

Disclosure

The authors report no conflicts of interest in this work.

References

1. Yoshimoto H, Shin YM, Terai H, Vacanti JP. A biodegradable nanofiber scaffold by electrospinning and its potential for bone tissue engineering. *Biomaterials*. 2003;24(12):2077–2082.
2. Schaap-Oziemlak AM, Kühn PT, van Kooten TG, van Rijn P. Biomaterial–stem cell interactions and their impact on stem cell response. *RSC Adv*. 2014;4(95):53307–53320.
3. Williams JM, Adewunmi A, Schek RM, et al. Bone tissue engineering using polycaprolactone scaffolds fabricated via selective laser sintering. *Biomaterials*. 2005;26(23):4817–4827.
4. Binulal NS, Natarajan A, Menon D, Bhaskaran VK, Mony U, Nair SV. PCL-gelatin composite nanofibers electrospun using diluted acetic acid-ethyl acetate solvent system for stem cell-based bone tissue engineering. *J Biomater Sci Polym Ed*. 2014;25(4):325–340.
5. Zhang Y, Ouyang H, Lim CT, Ramakrishna S, Huang ZM. Electrospinning of gelatin fibers and gelatin/PCL composite fibrous scaffolds. *J Biomed Mater Res B Appl Biomater*. 2005;72(1):156–165.
6. Fujihara K, Kotaki M, Ramakrishna S. Guided bone regeneration membrane made of polycaprolactone/calcium carbonate composite nano-fibers. *Biomaterials*. 2005;26(19):4139–4147.
7. Causa F, Netti PA, Ambrosio L, et al. Poly-epsilon-caprolactone/hydroxyapatite composites for bone regeneration: in vitro characterization and human osteoblast response. *J Biomed Mater Res A*. 2006;76(1):151–162.
8. Ren K, Wang Y, Sun T, Yue W, Zhang H. Electrospun PCL/gelatin composite nanofiber structures for effective guided bone regeneration membranes. *Mater Sci Eng C Mater Biol Appl*. 2017;78:324–332.
9. Bose S, Roy M, Bandyopadhyay A. Recent advances in bone tissue engineering scaffolds. *Trends Biotechnol*. 2012;30(10):546–554.
10. Yi H, Ur Rehman F, Zhao C, Liu B, He N. Recent advances in nano scaffolds for bone repair. *Bone Res*. 2016;4:16050.
11. Jang JH, Castano O, Kim HW. Electrospun materials as potential platforms for bone tissue engineering. *Adv Drug Deliv Rev*. 2009;61(12):1065–1083.
12. Pramanik S, Pingguan-Murphy B, Abu Osman NA. Progress of key strategies in development of electrospun scaffolds: bone tissue. *Sci Technol Adv Mater*. 2012;13(4):043002.
13. Zhu J. Bioactive modification of poly(ethylene glycol) hydrogels for tissue engineering. *Biomaterials*. 2010;31(17):4639–4656.
14. Pazarçeviren E, Erdemli Ö, Keskin D, Tezcaner A. Clinoptilolite/PCL-PEG-PCL composite scaffolds for bone tissue engineering applications. *J Biomater Appl*. 2017;31(8):1148–1168.
15. Koupaei N, Karkhaneh A, Daliri Joupari M. Preparation and characterization of (PCL-crosslinked-PEG)/hydroxyapatite as bone tissue engineering scaffolds. *J Biomed Mater Res A*. 2015;103(12):3919–3926.
16. Yao R, He J, Meng G, Jiang B, Wu F. Electrospun PCL/Gelatin composite fibrous scaffolds: mechanical properties and cellular responses. *J Biomater Sci Polym Ed*. 2016;27(9):824–838.

17. Yang G, Wang J, Wang Y, Li L, Guo X, Zhou S. An implantable active-targeting micelle-in-nanofiber device for efficient and safe cancer therapy. *ACS Nano*. 2015;9(2):1161–1174.
18. Tiwari AP, Joshi MK, Lee J, et al. Heterogeneous electrospun polycaprolactone/polyethylene glycol membranes with improved wettability, biocompatibility, and mineralization. *Colloids Surf A Physicochem Eng Asp*. 2017;520:105–113.
19. Shu XZ, Liu Y, Palumbo F, Prestwich GD. Disulfide-crosslinked hyaluronan-gelatin hydrogel films: a covalent mimic of the extracellular matrix for in vitro cell growth. *Biomaterials*. 2003;24(21):3825–3834.
20. Yue K, Trujillo-de Santiago G, Alvarez MM, Tamayol A, Annabi N, Khademhosseini A. Synthesis, properties, and biomedical applications of gelatin methacryloyl (GelMA) hydrogels. *Biomaterials*. 2015; 73:254–271.
21. Thakur T, Xavier JR, Cross L, et al. Photocrosslinkable and elastomeric hydrogels for bone regeneration. *J Biomed Mater Res A*. 2016; 104(4):879–888.
22. Echave MC, Sánchez P, Pedraz JL, Orive G. Progress of gelatin-based 3D approaches for bone regeneration. *J Drug Deliv Sci Technol*. 2017; 42:63–74.
23. Zhao X, Sun X, Yildirim L, et al. Cell infiltrative hydrogel fibrous scaffolds for accelerated wound healing. *Acta Biomater*. 2017;49:66–77.
24. Nichol JW, Koshy ST, Bae H, Hwang CM, Yamanlar S, Khademhosseini A. Cell-laden microengineered gelatin methacrylate hydrogels. *Biomaterials*. 2010;31(21):5536–5544.
25. Klossner RR, Queen HA, Coughlin AJ, Krause WE. Correlation of chitosan's rheological properties and its ability to electrospin. *Biomacromolecules*. 2008;9(10):2947–2953.
26. Chakrapani VY, Gnanamani A, Giridev VR, Madhusootheran M, Sekaran G. Electrospinning of type I collagen and PCL nanofibers using acetic acid. *J Appl Polym Sci*. 2012;125(4):3221–3227.
27. Fukushima K, Feijoo JL, Yang M-C. Comparison of abiotic and biotic degradation of PDLLA, PCL and partially miscible PDLLA/PCL blend. *Eur Polym J*. 2013;49(3):706–717.
28. Dallas P, Niarchos D, Vrbancic D, et al. Interfacial polymerization of pyrrole and in situ synthesis of polypyrrole/silver nanocomposites. *Polymers*. 2007;48(7):2007–2013.
29. Seifpoor M, Nouri M, Mokhtari J. Thermo-regulating nanofibers based on nylon 6,6/polyethylene glycol blend. *Fibers and Polymers*. 2011;12(6):706–714.
30. Chen H, Ma Q, Wang S, Liu H, Wang K, Morphology WK. Morphology, compatibility, physical and thermo-regulated properties of the electrospinning polyamide 6 and polyethylene glycol blended nanofibers. *Journal of Industrial Textiles*. 2016;45(6):1490–1503.
31. Shin H, Olsen BD, Khademhosseini A. The mechanical properties and cytotoxicity of cell-laden double-network hydrogels based on photocrosslinkable gelatin and gellan gum biomacromolecules. *Biomaterials*. 2012;33(11):3143–3152.
32. Li YF, Rubert M, Aslan H, et al. Ultraporous interweaving electrospun microfibers from PCL-PEO binary blends and their inflammatory responses. *Nanoscale*. 2014;6(6):3392–3402.
33. Xiao K, Zhai Y, Yu J, Ding B, Poly N-Structured. Nanonet-structured poly(m-phenylene isophthalamide)–polyurethane membranes with enhanced thermostability and wettability for high power lithium ion batteries. *RSC Adv*. 2015;5(68):55478–55485.
34. Guan J, Wagner WR, Synthesis WWR. Synthesis, characterization and cytocompatibility of polyurethaneurea elastomers with designed elastase sensitivity. *Biomacromolecules*. 2005;6(5):2833–2842.
35. Kwon IK, Kidoaki S, Matsuda T. Electrospun nano- to microfiber fabrics made of biodegradable copolyesters: structural characteristics, mechanical properties and cell adhesion potential. *Biomaterials*. 2005; 26(18):3929–3939.
36. Pant HR, Bajgai MP, Nam KT, Chu KH, Park S-J, Kim HY. Formation of electrospun nylon-6/methoxy poly(ethylene glycol) oligomer spider-wave nanofibers. *Mater Lett*. 2010;64(19):2087–2090.
37. Pant HR, Nam KT, Oh HJ, et al. Effect of polymer molecular weight on the fiber morphology of electrospun mats. *J Colloid Interface Sci*. 2011; 364(1):107–111.
38. Olszta MJ, Cheng X, Jee SS, et al. Bone structure and formation: A new perspective. *Mater Sci Eng: R: Rep*. 2007;58(3–5):77–116.
39. Correia TR, Ferreira P, Vaz R, et al. Development of UV cross-linked gelatin coated electrospun poly(caprolactone) fibrous scaffolds for tissue engineering. *Int J Biol Macromol*. 2016;93(Pt B):1539–1548.
40. Morouço P, Biscaia S, Viana T, et al. Fabrication of poly(ϵ -caprolactone) scaffolds reinforced with cellulose nanofibers, with and without the addition of hydroxyapatite nanoparticles. *Biomed Res Int*. 2016;2016:1596157.
41. Vogler EA. Structure and reactivity of water at biomaterial surfaces. *Adv Colloid Interface Sci*. 1998;74(1):69–117.
42. Yuk H, Zhang T, Lin S, Parada GA, Zhao X. Tough bonding of hydrogels to diverse non-porous surfaces. *Nat Mater*. 2016;15(2):190–196.
43. Mizuno M, Kuboki Y. Osteoblast-related gene expression of bone marrow cells during the osteoblastic differentiation induced by type I collagen. *J Biochem*. 2001;129(1):133–138.
44. Koroleva A, Deiwick A, Nguyen A, et al. Osteogenic differentiation of human mesenchymal stem cells in 3-D Zr-Si organic-inorganic scaffolds produced by two-photon polymerization technique. *PLoS One*. 2015;10(2):e0118164.
45. Lampin M, Warocquier-Clérout, Legris C, Degrange M, Sigot-Luizard MF. Correlation between substratum roughness and wettability, cell adhesion, and cell migration. *J Biomed Mater Res*. 1997;36(1):99–108.
46. Byambaa B, Annabi N, Yue K, et al. Bioprinted osteogenic and vasculogenic patterns for engineering 3D bone tissue. *Adv Healthc Mater*. 2017;6(16):1700015.
47. Khayat A, Monteiro N, Smith EE, et al. GelMA-Encapsulated hDPSCs and HUVECs for dental pulp regeneration. *J Dent Res*. 2017;96(2): 192–199.
48. Chen X, Bai S, Li B, et al. Fabrication of gelatin methacrylate/nanohydroxyapatite microgel arrays for periodontal tissue regeneration. *Int J Nanomedicine*. 2016;11:4707–4718.
49. Barati D, Shariati SRP, Moeinzadeh S, Melero-Martin JM, Khademhosseini A, Jabbari E. Spatiotemporal release of BMP-2 and VEGF enhances osteogenic and vasculogenic differentiation of human mesenchymal stem cells and endothelial colony-forming cells co-encapsulated in a patterned hydrogel. *J Control Release*. 2016;223:126–136.
50. Aparnathi MK, Patel JS. Biodegradable gelatin methacrylate gel as a potential scaffold for bone tissue engineering of canine adipose-derived stem cells. *J Stem Cells*. 2016;11(3):111–119.
51. Jiang P, Mao Z, Gao C. Combinational effect of matrix elasticity and alendronate density on differentiation of rat mesenchymal stem cells. *Acta Biomater*. 2015;19:76–84.
52. Visser J, Gawlitta D, Benders KE, et al. Endochondral bone formation in gelatin methacrylamide hydrogel with embedded cartilage-derived matrix particles. *Biomaterials*. 2015;37:174–182.
53. Türkkan S, Pazarçeviren AE, Keskin D, Machin NE, Duygulu Ö, Tezcaner A. Nanosized CaP-silk fibroin-PCL-PEG-PCL/PCL based bilayer membranes for guided bone regeneration. *Mater Sci Eng C Mater Biol Appl*. 2017;80:484–493.

Supplementary materials

Materials

The polycaprolactone (PCL) (80,000), poly(ethylene glycol) (PEG) (Mw 8,000), gelatin (Type A, 300 bloom from porcine skin), methacrylic anhydride (MA), Alizarin red S, dimethyl sulfoxide, and Irgacure 2959 were purchased from Sigma-Aldrich (St. Louis, MO, USA). Hexafluoroisopropan-2-ol was purchased from Oakhood Chemical (St. Louis, MO, USA). Ethylenediaminetetraacetic acid, Dulbecco's PBS, and antibiotics were purchased from Sigma-Aldrich. Alpha-MEM was supplied by Invitrogen. HyClone characterized FBS and precleaned microscope slides were obtained from Thermo Fisher Scientific (Waltham, MA, USA). 3-(4,5-dimethylthiazol-2-yl)-5-(3-carboxymethoxyphenyl)-2-(4-sulfophenyl)-2H-tetrazoli solution was provided by Promega (Fitchburg, WI).

Procedure for the synthesis of gelatin methacryloyl (GelMA)

GelMA was prepared in accordance with Nichol et al¹ (Figure 1A). PBS (100 mL) was heated at 50°C and 10 g of gelatin (Type A, porcine skin) was dissolved and stirred for up to 1 h. Next, 3 mL of methacrylate anhydride was dripped slowly and stirred in a closed system for 3 h (50°C). Separately, PBS (400 mL) was preheated at 50°C and then mixed (final volume 500 mL). The solution was divided in two portions and dialyzed using DI water for 7 days (dialysis tube, Sigma-Aldrich 12,000–14,000 Da, 40°C). The DI water was changed twice per day. Finally, the solution was transferred to falcon tubes, frozen at –80°C for 5 days, and then lyophilized for 7 days. Proton nuclear magnetic resonance (¹HNMR) determined the degree of methacryloyl substitution.

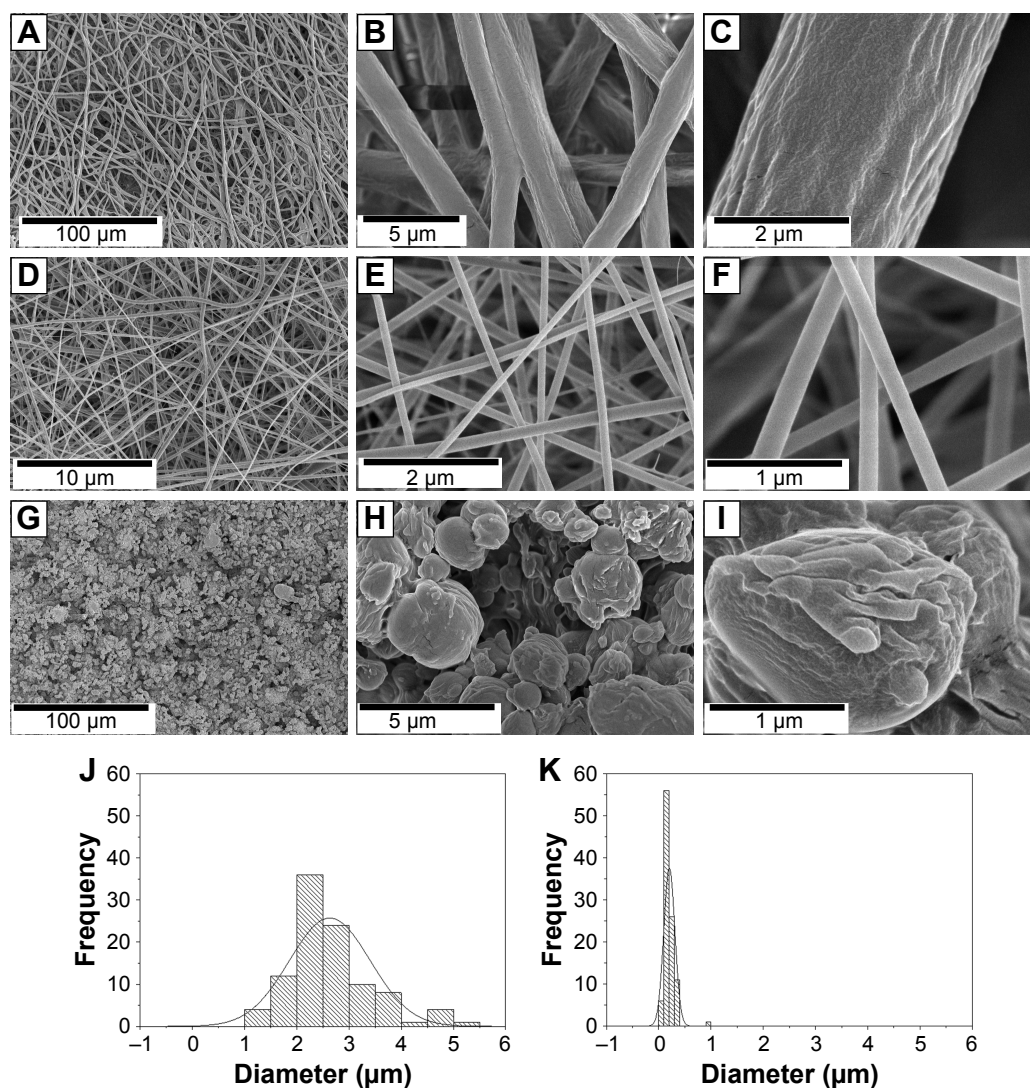


Figure S1 (A–I) Morphology of electrospun (A–C) PCL fibers, (D–F) GelMA fibers and (G–I) PEG beads. (A, D, G) The distribution of diameters for (J) PCL and (K) GelMA fibers.

Abbreviations: GelMA, gelatin methacryloyl; PCL, polycaprolactone; PEG, poly(ethylene glycol).

Table S1 Liquids and surface tension components

Surface tension data (mN/N)	γ_L^D	γ_L^P	γ_{LV}
Water	21.8	51.0	72.8
Diiodomethane	50.8	0.0	50.8

Note: Data extracted from Zhang et al.⁵

¹H NMR analysis

Thirty milligrams of GelMA was dissolved in 1 mL of deuterium oxide (D₂O) and run at 37°C. CD LABS 12.0 software analyzed the data. Comparison between methylene lysine protons (2H) around 2.8 ppm (peak b) of gelatin and GelMA were used to determine the degree of methacryloyl substitution (66% by NMR analysis, Figure 1B).

Preparation of the solutions

PCL, PEG, and GelMA were separately dissolved (Figure 1C) for 12 h (using a closed system). A classical electrospinning process was coupled using: a syringe (BD Yale, 3 mL), needle (Inbras, 24G), positive high voltage source (set to 17 kV, Nanospinner Machine, Inovenso), static stainless steel collector (100×100×2 mm) covered by aluminum foil, distance of 10 cm (needle tip to collector), infusion rate of 1 mL/h (Harvard, PHD 2000), temperature at 23°C, and humidity at 40%.

Crosslinking of scaffolds

PCL:PEG:GelMA mats (10×10 mm) (Figure 1C, Entry 4) were immersed in glutaraldehyde (25% in DI water) for 12 h. After, the mats were washed five times in a glycine solution (15 mg/mL of DI water). Next, the mats were immersed in a photoinitiator solution (1.0 g of Irgacure, 10 mL of ethanol, absence of light) for 2 h and photocrosslinked for 10 min (365-nm UV light, OminiCure®-2000 Series, 10 cm of working distance). Finally, the crosslinked PCL:PEG:GelMA were washed using the following sequence: ethanol (3×), DI water (3×) and dried overnight (vacuum). Figure 1D summarizes a possible mechanism after photocrosslinking.

Characterization of scaffolds

Micrographs were captured using an FEI Quanta 200, 3 kV, microscope. Previous to the analysis, a thin gold

layer was evaporated for 10 min (~10 nm). Attenuated total reflectance Fourier-transform infrared spectrometry (ATR-FTIR, Spotlight-400, Perkin Elmer) analyzed the vibrational chemical groups before and after UV photocrosslinking.

A goniometer (Krüss, Model DSA 100) operating in dynamic mode was used to measure the contact angle between the scaffold surface and air using water and diiodomethane. Two microliters of each liquid was dropped on each scaffold, and images were recorded after 1 min. An N=5 for each sample was used.

The surface energy was calculated using interfacial tension through the Young's (equation 1)² and Young-Duprè equations (equation 2) using surface tension data from water and diiodomethane liquids (Table S1).

$$\cos\theta \gamma_{LV} = \gamma_{SV} - \gamma_{SL} \quad (1)$$

$$W_\alpha = \gamma_{LV}(1 + \cos\theta) = \gamma_{SV} - \gamma_{SL} \quad (2)$$

where θ referred to contact angles between the liquid and solid, γ_{LV} (liquid/vapor), γ_{SV} (solid/vapor), γ_{SL} (solid/liquid interfaces), and W_α (adhesion energy). Equations (1) and (2) were combined and used to calculate equation (3):

$$\gamma_{LV}(1 + \cos\theta) = 2\sqrt{\gamma_L^P \gamma_S^P} + 2\sqrt{\gamma_L^D \gamma_S^D} \quad (3)$$

showing polar components of the surface energy of γ_L^P (liquid) and γ_S^P (solid phases), γ_L^D dispersive component of the surface energy of the liquid, and γ_S^D of solid phases. Table S2 shows the surface energy calculated from equation 3.^{3,4}

Differential scanning calorimetry (TA Q20, TA Instruments) was used to identify the thermal properties of the produced scaffolds. For this, we used the first heating data, collected from -60°C to 150°C, at 10°C/min. The second heating data were also acquired at 10°C/min until reaching 150°C. The glass transition and the crystalline melting temperatures of the samples were obtained from the second heating and used to calculate the

Table S2 Contact angle and surface free energy calculated for the PCL:PEG:GelMA and PCL:PEG:GelMA-UV scaffolds^a

Nanofiber formulation	Contact angle (°)		Surface free energy (mN m ⁻¹)			$\frac{\gamma_p}{(\gamma_d + \gamma_p)}$
	Water	Diiodomethane	Dispersive (γ_d)	Polar (γ_p)	Total	
PCL:PEG:GelMA	25±2.8	5±0.0	40.6	30.8	71.4	0.43
PCL:PEG:GelMA-UV	69±3.1	5±0.0	47.5	5.85	53.35	0.11

Notes: ^aEach mean value corresponds to the average value on three different samples. For PCL, the contact angle was 149° (water).

Abbreviations: GelMA, gelatin methacryloyl; PCL, polycaprolactone; PEG, poly(ethylene glycol).

degree of the crystallinity (Figure 3G and H) by using equation (4).

$$X_c (\%) = \frac{\Delta H_m - \Delta H_c}{\Delta H_m^\infty} \times 100 \quad (4)$$

where ΔH_c =enthalpy of crystallization, ΔH_m =melting enthalpy of the sample, ΔH_m^∞ =melting enthalpy of a 100% crystalline sample, and $\Delta H_m^\infty=148$ J/g is the melting enthalpy of 100% crystalline PCL. W is the height/mass fraction.⁶

A Dynamic Mechanical Analyzer (DMA Q800, TA Instruments) operating in tension mode (ASTM D 882-12 with some modifications) was used to measure the mechanical properties of the produced scaffolds before and after UV (elastic modulus, MPa; and elongation-at-break, expressed in a percentage) in tension mode. The scaffolds were then cut (30×5×0.1 mm) and preconditioned at 25°C and 50% humidity for 24 h before testing. Measurements were carried out at 25°C at a strain rate of 1 mm/min (N=3). The statistical difference was analyzed using Student's *t*-tests.

Biological assays

Cell culture and sample sterilization

Totally 5,000 cells/cm² of human osteoblast cells line (hFOB 1.19, bone-forming cells; Lonza, CRL-11372, second passage) were cultured using C27015 media (Osteoblast Basal Medium, Promocell GmbH), 1% penicillin/streptomycin (P/S; Hyclone), and an Osteoblast Growth Medium Supplement Mix under standard cell culture conditions (37°C, 5% CO₂, and 95% air). UV irradiation (30 min) was used to sterilize the scaffolds (10 mm²).

Cell Proliferation assay

An MTS CellTiter 96® ((3-(4,5-dimethylthiazol-2-yl)-5-(3-carboxymethoxyphenyl)-2-(4-sulphophenyl)-2H-tetrazolium), G3581; Promega Corporation) assay was used to determine cell density up to 21 days. The scaffolds were first immersed into 24-wells plates; 5,000 cells/cm² were placed onto scaffolds and cultivated for 14 days. The culture media was changed every 2 days. After 14 days, an MTS reagent (1:5 ratio with cell culture medium) was added to each well and incubated for 4 h. Absorbance from each well was measured by a SpectraMax M3(MT05412) at 490 nm, and a color change from pink to dark brown was seen. A standard curve was created with known numbers of cells to correlate absorbance to cell numbers.

ALP assay

A BioAssay QuantiChrom™ ALP Assay Kit (DALP-250) was used. After each incubation time (7, 14, and 21 days), 200 μL of the assay buffer, 5 μL of an acetate solution (final 5 mM), and 2 μL of the *p*-nitrophenylphosphate liquid substrate (10 mM) were mixed and added to each 96-well assay. Two hundred microliters of DI water and the same volume of a calibration solution was transferred into separate wells of a clear bottom 96-well plate. Then, 50 μL samples were carefully transferred into other wells, and 150 μL of the working solution was pipetted into sample wells. The final reaction volume in the sample wells was 200 μL. The optical density was measured at 405 nm (*t*=0) and again after 4 min (*t*=4 min) on a plate reader using the supernatant.

Calcium deposition

Totally 5,000 cells/cm² were cultivated on the scaffolds for 7, 14, and 21 days. After each time, the scaffolds were washed three times using DI water. After, 1 mL of 0.6 M hydrochloric acid was added to each well for 4 h while in a shaken incubator. Next, the resulting samples were collected after being centrifuged at 12,000 rpm at 4°C for 3 min, and the supernatants were collected. Next, the aliquots of the QuantiChrom Calcium Assay Kit (BioAssay Systems) were added. Finally, the contents were transferred to 96-well plates and placed into a SpectraMax M3 microplate reader (Molecular Device), and the absorbance was measured at 612 nm. The values were obtained in absorbance according to the manufacturer's instructions. The absorbance was measured (612 nm) and compared to a standard curve constructed at the beginning of each trial.

Cellular adhesion

Totally 5,000 cells/cm² were cultivated on each scaffold for 7 days. After time, the scaffolds were washed (3× using PBS) and fixed in paraformaldehyde (4%) at room temperature (20 min). Afterward, an ascending series of ethanol was used to dehydrate the samples. Finally, a thin gold layer was sputtered (10 nm) and micrographs were collected using a field emission gun scanning electron microscope (FEI Quanta 200, 3 kV).

Statistical analysis

The experiments were analyzed in triplicate and repeated three times. ANOVA and Student's *t*-tests were used to determine the significance and statistical differences. The populations were obtained from a normal distribution.

References

1. Nichol JW, Koshy ST, Bae H, Hwang CM, Yamanlar S, Khademhosseini A. Cell-laden microengineered gelatin methacrylate hydrogels. *Biomaterials*. 2010;31(21):5536–5544.
2. Young T. III. An essay of cohesion of fluids. *Philos Trans R Soc London*. 1809;95:65.
3. Van Oss CJ, Good RJ, Chaudhury MK. The role of van der Waals forces and hydrogen bonds in “hydrophobic interactions” between biopolymers and low energy surfaces. *J Colloid Interface Sci*. 1986; 111:378–390.
4. Flahaut E, Durrieu MC, Remy-Zolghadri M, Bareille R, Baquey C. Investigation of the cytotoxicity of CVVD carbon nanotubes towards human umbilical vein endothelial cells. *Carbon*. 2006;44:1093–1099.
5. Zhang Y, Ouyang H, Lim CT, Ramakrishna S, Huang Z-M. Electrospinning of gelatin fibers and gelatin/PCL composite fibrous scaffolds. *J Biomed Mater Res B Appl Biomater*. 2005;72B(1):156–165.
6. Navarro-Baena V, Sessini V, Dominici F, Torre L, Kenny JM, Peponi L. Design and biodegradable blends based on PLA and PCL: from morphological, thermal and mechanical studies to shape memory behavior. *Polym Degrad Stab*. 2016, 132, 97–108.

International Journal of Nanomedicine

Publish your work in this journal

The International Journal of Nanomedicine is an international, peer-reviewed journal focusing on the application of nanotechnology in diagnostics, therapeutics, and drug delivery systems throughout the biomedical field. This journal is indexed on PubMed Central, MedLine, CAS, SciSearch®, Current Contents®/Clinical Medicine,

Submit your manuscript here: <http://www.dovepress.com/international-journal-of-nanomedicine-journal>

Dovepress

Journal Citation Reports/Science Edition, EMBase, Scopus and the Elsevier Bibliographic databases. The manuscript management system is completely online and includes a very quick and fair peer-review system, which is all easy to use. Visit <http://www.dovepress.com/testimonials.php> to read real quotes from published authors.