

# RAP80 expression in breast cancer and its relationship with apoptosis in breast cancer cells

This article was published in the following Dove Press journal:  
OncoTargets and Therapy

Guanghua Jin  
Xiaoyun Mao  
Zhen Qiao  
Bo Chen  
Feng Jin

Department of Breast Surgery,  
The First Affiliated Hospital of China  
Medical University, Shenyang, Liaoning  
110001, People's Republic of China

**Background:** RAP80 is a member of BRCA1-A complex, which plays an important role in regulating the cell cycle checkpoint and DNA damage repair in the nucleus.

**Method:** We investigated RAP80 expression in breast cancer and its paired normal breast tissues to further analyze its role in the biological behavior of breast cancer cells.

**Results:** RAP80 expression in breast cancer (62.3%, 101/162) was significantly lower than that in adjacent normal breast tissues ( $P < 0.05$ ). RAP80 expression was related to tumor size, lymph node metastasis, TNM stage, and molecular subtype ( $P < 0.05$ ). RAP80 mRNA expression was significantly lower in triple-negative breast cancer than other types. The mRNA and protein of RAP80 were obvious in MCF-7 and very weak in ZR-75 or MDA-MB-231, so we picked MCF-7 to be transfected with RAP80 siRNA. The survival rate of both cells decreased in a dose-dependent manner and the IC<sub>50</sub> value for cisplatin in MCF-7 RAP80 siRNA cells was 0.83 μg/mL, and 1.69 μg/mL in wild-type MCF-7 according to MTT. RAP80 siRNA transfection upregulated the apoptosis and downregulated invasive or migrating ability of MCF-7. RAP80 siRNA also upregulated the protein expression of Caspase-3, cleaved Caspase-3, Apaf-1, Cytochrome C, Bax, and Fas, and downregulated the protein expression of Bcl-2.

**Conclusion:** RAP80 expression was related to ER or PR activity. Inhibition of RAP80 expression can induce apoptosis in breast cancer cells and improve chemosensitivity to cisplatin. Tumor cells can activate protective responses to inhibit cell cycle progression, which may be related to RAP80, and repair cisplatin-induced DNA damage. RAP80 is related to BRCA1's effect, which can be used as an interesting target for pharmacological modulation that can increase the efficiency of cisplatin chemotherapy.

**Keywords:** RAP80, apoptosis, breast cancer, chemosensitivity

## Introduction

RAP80 is a member of BRCA1-A complex, which regulates the cell cycle checkpoint and DNA damage repair in the nucleus.<sup>1</sup> DNA damage, mutations of tumor suppressor genes, and defects in DNA damage response (DDR) are critical events in carcinogenesis.<sup>2,3</sup> RAP80 is a key regulator of DDR, which is crucial for the recruitment of BRCA1 complex in DDR.<sup>4</sup> Breast cancer carcinogenesis and advancement associated with DDR, and most of the breast cancer susceptibility genes are involved in DNA repair.<sup>5,6</sup> RAP80 works upstream of BRCA1 and is essential for the localization of BRCA1 to the site of damaged DNA. A previous study indicated that RAP80 and BRCA1 mRNA expression can be predictive markers in advanced non-small-cell lung cancer patients treated with platinum-based chemotherapy.<sup>7</sup> What about RAP80's role in breast cancer? In the present study, we sought to investigate the expression of RAP80 in invasive breast cancer and its paired normal breast tissues, and further analyzed its role in the biological behavior of breast cancer cells.

Correspondence: Feng Jin  
Department of Breast Surgery, The  
First Affiliated Hospital of China Medical  
University, 155 Nanjing North Street,  
Heping District, Shenyang, Liaoning  
Province 110001, People's Republic  
of China  
Tel/fax +86 24 8328 2618  
Email jinfeng66cn@hotmail.com

## Materials and methods

### Patients and tissue samples

Fresh breast tissue samples were collected from Department of Breast Surgery, the First Affiliated Hospital of China Medical University between February 2010 and September 2011, including ductal carcinoma in situ, invasive breast ductal cancer tissues and its paired normal breast tissues (with >2 cm distance from the primary cancer tissue). None of the patients underwent chemotherapy, radiotherapy or adjuvant treatment before surgery. Patients' ages ranged from 24 to 79, with an average age of 51.8 years old. Clinicopathological information was reviewed using the hospital medical records. All patients enrolled in this study signed an informed consent form agreeing to participate in this study and for publication of the results. The study protocol was reviewed and approved by the ethics committee of China Medical University (Shenyang, People's Republic of China) and the participating hospital.

### Immunohistochemistry

Formalin-fixed paraffin-embedded specimens (4  $\mu$ m thick) were incubated with RPA80 monoclonal antibody (no 14466, diluted 1:200, Cell Signaling Technology, Danvers, MA, USA). Immunohistochemical staining was performed using UltraSensitive™ S-P kits (Maixin-Bio, Fujian, People's Republic of China) according to the manufacturer's instructions and using the reagent supplied with the kit. PBS was used in place of the primary antibodies for negative control. The staining intensity and area extent were scored by the German semiquantitative scoring system as previously described.<sup>8</sup>

### Breast cancer cell lines and cell culture conditions

Breast cancer cell lines including MCF-7 (chemotherapy responsive, ER+, PR+/-, Her-2-, Ki67 low), ZR-75 (usually endocrine responsive, variable response to chemotherapy, ER+, PR+/-, HER2+, Ki67 high), and MDA-MB-231 (intermediate response to chemotherapy, ER-, PR-, HER2-) were chosen for this study and maintained under recommended culture conditions. They were obtained from the American Type Culture Collection (Manassas, VA, USA) and stored in the laboratory of Pathology Department, the First Affiliated Hospital and College of Basic Medical Sciences of China Medical University (Shenyang, People's Republic of China). All the cells were cultured in RPMI 1640 medium (Gibco, Thermo Fisher Scientific, Waltham, MA, USA) or DMEM (Gibco, Thermo Fisher Scientific) supplemented with 10% FBS (Sigma-Aldrich, Buchs, Switzerland) in a 5% CO<sub>2</sub> humidified atmosphere at 37°C.

### Western blot and quantitative real-time polymerase chain reaction (qRT-PCR) analysis of RAP80 in breast cancer cell lines or breast tissues

The tissue or cells of breast were washed with ice-cold PBS and then lysed in lysis buffer containing 10 mM Tris (pH 7.5), 1% sodium dodecyl sulfate (SDS), 10 mM EDTA, 150 mM NaCl, 1 mM sodium orthovanadate, and a mixture of protease inhibitors (1 mM phenylmethylsulfonyl fluoride, 1  $\mu$ g/mL pepstatin A, 2  $\mu$ g/mL aprotinin). The lysates were sonicated for 10 seconds, centrifuged for 20 minutes at 20,000 $\times$  g and then stored at -70°C. Equal amounts (25  $\mu$ g) of the cell lysates were resolved by 12% SDS-PAGE and transferred to polyvinylidene fluoride membranes. After blocking, blots were incubated with mouse anti-RAP80 monoclonal antibody (no 14466, diluted 1:400, Cellsignal) or  $\beta$ -actin (1:1,000, Zhongshan Golden Bridge Biotechnology, Beijing, People's Republic of China) overnight at 4°C, followed by each corresponding second antibody at room temperature for 1 hour at 37°C. Then, the results were obtained by enhanced chemiluminescence (Pierce Biotechnology, Waltham, MA, USA). The protein bands were then analyzed using the BioImaging System (UVP, Upland, CA, USA). The grayscale values of the RAP80 were normalized to the values of the corresponding  $\beta$ -actin band to determine the expression level of the protein. The experiments were repeated at least three times independently. Total RNA from breast cancer cell lines was extracted with TRIzol reagent (Thermo Fisher Scientific, Waltham, MA, USA) and the quality of RNA was analyzed by A260/A280 ratio by Nano-Photometer (IMPIEN, Gttingen, Germany). The ratios were between 1.6 and 1.8. The reverse transcription was performed with RNA PCR Kit (AMV Ver.3.0, Takara, Kyoto, Japan) according to the manufacturer's protocols. qRT-PCR was performed by SYBR® Premix Ex Taq™ II Kit (Takara) using 7500 Real-Time PCR system (Applied Biosystems, Thermo Fisher Scientific). An amount of 2  $\mu$ L template cDNA was added to the final volume of 20  $\mu$ L of reaction mixture. Expression of the selected genes was normalized to GAPDH, which was used as an internal housekeeping control. The experiments were repeated at least three times independently. The results showed that mRNA and protein expression of RAP80 were obvious in MCF-7 and very weak in ZR-75 or MDA-MB-231. So we picked MCF-7 to be transfected with RAP80 siRNA, to further investigate the role of RAP80 in MCF-7.

### RAP80 siRNA transfection

The human RAP80 gene sequence was obtained from GeneBank. According to the design principle of siRNA, an

siRNA Target Designer (GenePharma, Shanghai, People's Republic of China) was used to design siRNAs and synthesized targeting the specific RAP80. The MCF-7 cells were cultured in a 24-well plate for 24 hours before the experiment of transient transfection. The cells were transfected with Lipofectamine 2000 (Thermo Fisher Scientific) according to the manufacturer's instructions. Following the transfection, the cells were harvested at 48 hours to measure the protein levels. Control RAP80 siRNA (sc-92007, 1:500, Santa Cruz Biotechnology Inc., Dallas, TX, USA) and negative control siRNA (sc-36869, 1:500, Santa Cruz Biotechnology Inc.) were used in Western blot analysis to verify the downregulation of RAP80. A control study using non-specific siRNA was carried out under the same conditions.

### MTT assay

Cell proliferation was assessed at various time points by MTT assay. Briefly, 2,000 cells were seeded in each well of a 96-well plate (eight repeats) and allowed to adhere for 8 hours. Then, 5 mg/mL MTT (Sigma-Aldrich Co., St Louis, MO, USA) was added to each well and incubated for 24 hours. Then, cells were further treated with different concentrations of cisplatin for 72 hours. The cells were lysed by adding 150  $\mu$ L/well of dimethyl sulfoxide and absorbance was read at 570 nm wavelength in a microplate reader. The experiments were repeated at least three times independently. IC50 values were calculated for cisplatin from the respective sigmoidal dose–response curves.

### Flow cytometry apoptosis assay

Analysis of apoptosis was carried out using an Annexin V-FITC/propidium iodide (PI) double staining kit (Beyotime, Nanjing, People's Republic of China) following the manufacturer's protocols. In brief, each group was plated in six wells. An amount of 1  $\mu$ M of brivudine was treated. Cells were continuously cultured for 48 hours and 72 hours, and then harvested. Before flow cytometry analysis, cell suspensions were washed in PBS, resuspended with a 1 $\times$  binding buffer, and exposed to 5  $\mu$ L of Annexin V-FITC (20  $\mu$ g/mL) and 10  $\mu$ L of PI (50  $\mu$ g/mL). After incubation for 20 minutes in the dark, the samples were subjected to FACScan flow cytometry (CellQuest and ModFITLT for Mac V1.01 software [BD Biosciences, San Jose, CA, USA]). The experiments were repeated at least three times independently.

### Western blot analysis of apoptosis

The expression of apoptotic proteins of each group was analyzed by Western blot as previous described using specific antibody against Caspase-3 (sc-271759, 1:100, Santa Cruz Biotechnology Inc.), cleaved Caspase-3 (asp175) (no 9661, 1:1,000,

Cellsignal), Bcl-2 (sc-7382, 1:250, Santa Cruz Biotechnology Inc.), Apaf-1 (sc-135625, 1:500, Santa Cruz Biotechnology Inc.), Cytochrome C (sc-13156, 1:200, Santa Cruz Biotechnology Inc.), Bax (sc-70406, 1:200, Santa Cruz Biotechnology Inc.) or  $\beta$ -actin (1:1,000, Zhongshan Golden Bridge Biotechnology). The experiments were repeated at least three times independently.

### Matrigel invasion assay

Cell invasive ability was examined using a 24-well Transwell with 8.0  $\mu$ m pore polycarbonate membrane inserts (Corning Incorporated, Corning, NY, USA) according to the manufacturer's protocol. The Matrigel (100  $\mu$ L/mL) was applied to the upper surface of the membranes. After the transfection for 48 hours and 72 hours, cells of each group were seeded on the upper chamber (5 $\times$ 10<sup>4</sup> cells/well) and incubated for 18 hours. Cells that had invaded the surface of the membrane were fixed with methanol and stained with hematoxylin. The cells that invaded and moved onto the lower surface of the filter membrane were counted in ten random high-power fields (400 $\times$ ) by an inverted microscope. The experiment was repeated five times and the data were shown as mean  $\pm$  SD.

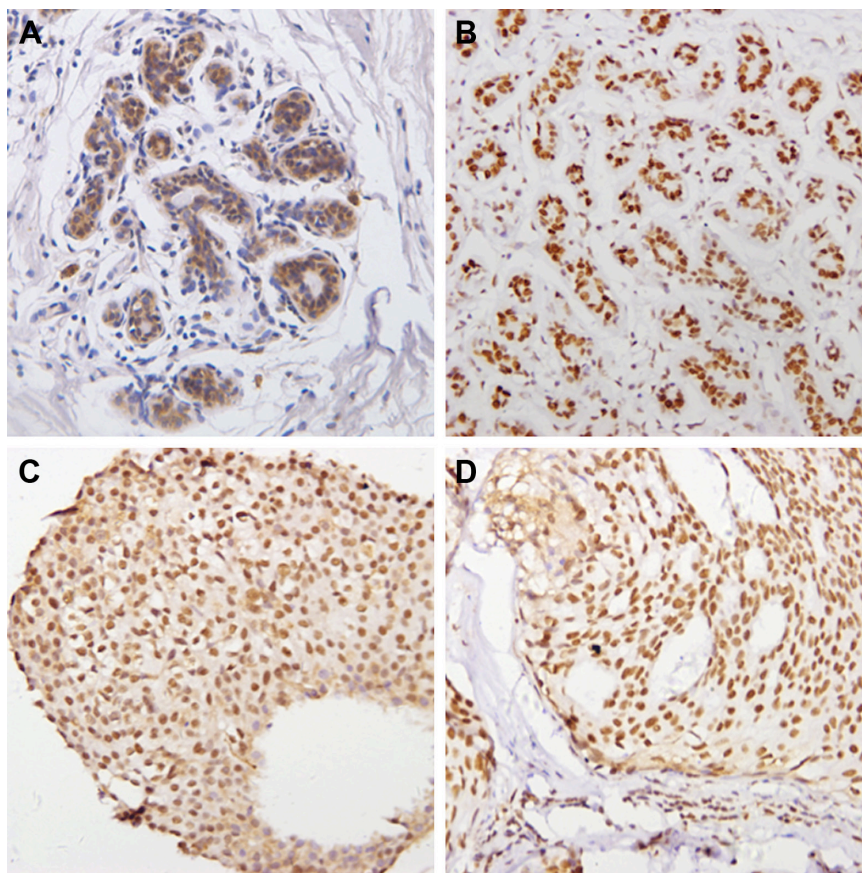
### Statistical analyses

SPSS version 13.0 for Windows was used for all analyses. The Pearson's chi-squared test was used to analyze the relationship between RAP80 expression with clinicopathological factors in breast cancer. One-way ANOVA was performed to compare data from the densitometry analysis of MTT, flow cytometry analysis, Western blotting, RT-PCRq, and Matrigel invasion assay. Statistical significance in this study was set at  $P < 0.05$ . All reported  $P$ -values are two-sided.

## Result

### Expression of RAP80 in invasive ductal breast cancer tissues and paired normal breast tissues by immunohistochemistry

The results of immunohistochemistry revealed mainly nucleus staining of the RAP80 protein in the mammary epithelium of paired normal breast tissues, and the breast cancer cells showed staining on the nucleus (Figure 1). Total positive rate of RAP80 expression was 62.3% in invasive ductal breast cancer, whereas it was 86.75% in its paired normal breast tissues. RAP80 expression in breast cancer (62.3%, 101/162) was significantly lower than that in adjacent normal breast tissues ( $P < 0.05$ ). The relationship between RAP80 expression and different clinicopathological factors in breast cancer is shown in Table 1. RAP80 expression was not associated with age or histological grade ( $P > 0.05$ ). Its expression was



**Figure 1** Representative immunohistochemical staining of RAP80 positive expression in breast cancer tissue and paired normal breast tissue.

**Note:** Positive nucleus staining of RAP80 in the paired normal breast mammary epithelium (A, B), RAP80 expression in ductal carcinoma in situ (C), and invasive ductal cancer (D); original magnification, all  $\times 200$ .

related with tumor size, lymph node metastasis, TNM stage, ER or PR expression, and Ki67 status ( $P < 0.05$ ). RAP80 expression was related with molecular subtype ( $P < 0.05$ ).

### Expression of RAP80 mRNA expression in invasive ductal breast cancer by qRT-PCR

The results of qRT-PCR revealed that RAP80 mRNA was significantly lower in triple-negative breast cancer than other types, as shown in Table 2. RAP80 mRNA expression was correlated with ER or PR expression, lymph node metastasis, and Ki67 status ( $P > 0.05$ ). RAP80 mRNA expression was not associated with age, TNM stage, C-erbB-2 status or histology grade ( $P > 0.05$ ).

### The RAP80 expression in breast cancer cell lines and RAP80 siRNA in MCF-7

As shown in Figure 2, the mRNA and protein expression of RAP80 were obvious in MCF-7 and very weak in ZR-75 or MDA-MB-231 (Figure 2). So we picked MCF-7 to be transfected with RAP80 siRNA, and to further investigate the role of RAP80 in MCF-7's biological behavior. Using Western blot and RT-PCRq analysis, RAP80 protein and

mRNA expression was obviously observed in RAP80 siRNA-normal control (NC) transfection group or wild-type MCF-7, and it was very weak in RAP80 siRNA transfection group (Figure 2). This indicates the effective downregulation of RAP80 in MCF-7 by RAP80 siRNA.

### Effect of RAP80 siRNA transfection on cell proliferation by MTT

The IC<sub>50</sub> value of cisplatin in wild-type MCF-7 or MCF-7 RAP80 siRNA was shown in Figure 3. The survival rate of both cell lines decreased in a dose-dependent manner and the IC<sub>50</sub> value for cisplatin in MCF-7 RAP80 siRNA cells was 0.83  $\mu\text{g/mL}$ , and 1.69  $\mu\text{g/mL}$  in wild-type MCF-7.

### RAP80 siRNA transfection upregulated the apoptosis of MCF-7 cells

We monitored the level of apoptosis induction by flow cytometry analysis. As shown in Figure 4, MCF-7 transfected with RAP80 siRNA showed a different percentage of apoptosis than the siRNA-NC transfection group or the group of MCF-7 without treatment at 48 hours and 72 hours after transfection. Apoptotic cells' ratio of RAP80 siRNA transfection

**Table 1** Expression of RAP80 in 162 patients with breast cancer by immunohistochemistry

Characteristics	n	Expression of RAP80		P-value
		Positive n=101	Negative n=61	
Age				$\chi^2=3.08$
≤50 years	70	49	21	$P>0.05$
>50 years	92	52	40	
Tumor stage				$\chi^2=12$
III+IV	55	24	31	$P>0.05$
I+II	107	77	30	
Tumor size				$\chi^2=6.30$
≤2 cm	70	28	42	$P<0.05$
>2 cm	90	54	36	
Lymph node metastasis				$\chi^2=4.59$
Negative	65	47	18	$P<0.05$
Positive	97	54	43	
ER expression				$\chi^2=5.57$
Negative	96	67	29	$P<0.05$
Positive	66	34	32	
PR expression				$\chi^2=5.18$
Negative	85	60	25	$P<0.05$
Positive	77	41	36	
C-erbB-2				$\chi^2=0.21$
+ or not amplified by FISH	120	77	43	$P>0.05$
+++ or amplified by FISH	42	24	18	
Ki67				$\chi^2=13.9$
<14%	58	42	16	$P<0.05$
≥15%	104	59	45	
Histology grade				$\chi^2=4.14$
I	10	9	1	$P>0.05$
II	107	67	40	
III	45	25	20	
Molecular subtype				$\chi^2=11.23$
Luminal A	15	13	2	$P<0.05$
Luminal B	89	53	36	
Her-2 enriched	30	23	7	
TNBC	28	12	16	

**Abbreviations:** ER, estrogen receptor; PR, progesterone receptor; TNBC, triple-negative breast cancer.

group was 46.8% at 48 hours and 52.7% at 72 hours after transfection, which was higher than the siRNA-NC transfection group (13.1% at 48 hours after transfection, 10.7% at 72 hours after transfection) or the group of MCF-7 without treatment (15.1% at 48 hours after transfection, 12.9% at 72 hours after transfection) ( $P<0.05$ ).

### RAP80 siRNA transfection decreased invasive ability of MCF-7 cells

Matrigel invasion and migration assays showed that the invasive and migrating ability of the MCF-7 cells was decreased with RAP80 siRNA transfection after the treatment for 72 hours compared to that in MCF-7 cells without any additive or control cells with scrambled siRNA ( $P<0.05$ ; Figure 5).

**Table 2** Expression of RAP80 in 67 patients with breast cancer by qRT-PCR

Characteristics	n	Mean expression of RAP80	P-value
Age			$P>0.05$
≤50 years	31	6.90±0.91	
>50 years	36	6.97±0.96	
Tumor stage			$P>0.05$
III+IV	20	7.14±1.56	
I+II	47	6.93±0.80	
Tumor size			$P>0.05$
≤2 cm	16	7.30±0.87	
>2 cm	51	6.91±0.66	
Lymph node metastasis			$P<0.05$
Negative	33	7.89±0.95	
Positive	34	6.24±0.41	
ER expression			$P<0.05$
Negative	19	7.93±0.83	
Positive	48	6.12±0.56	
PR expression			$P<0.05$
Negative	28	7.05±1.35	
Positive	39	8.84±0.74	
C-erbB-2			$P>0.05$
+ or not amplified by FISH	50	6.90±1.10	
+++ or amplified by FISH	19	7.34±0.79	
Ki67			$P<0.05$
<14%	15	7.89±0.45	
≥15%	54	6.25±0.91	
Histology grade			$P>0.05$
I	3	6.89±1.01	
II	52	7.23±0.88	
III	14	7.51±1.56	
Molecular subtype			$P<0.05$
Luminal A	4	7.76±0.45	
Luminal B	45	7.45±0.71	
Her-2 enriched	8	7.13±0.65	
TNBC	10	5.93±0.62	

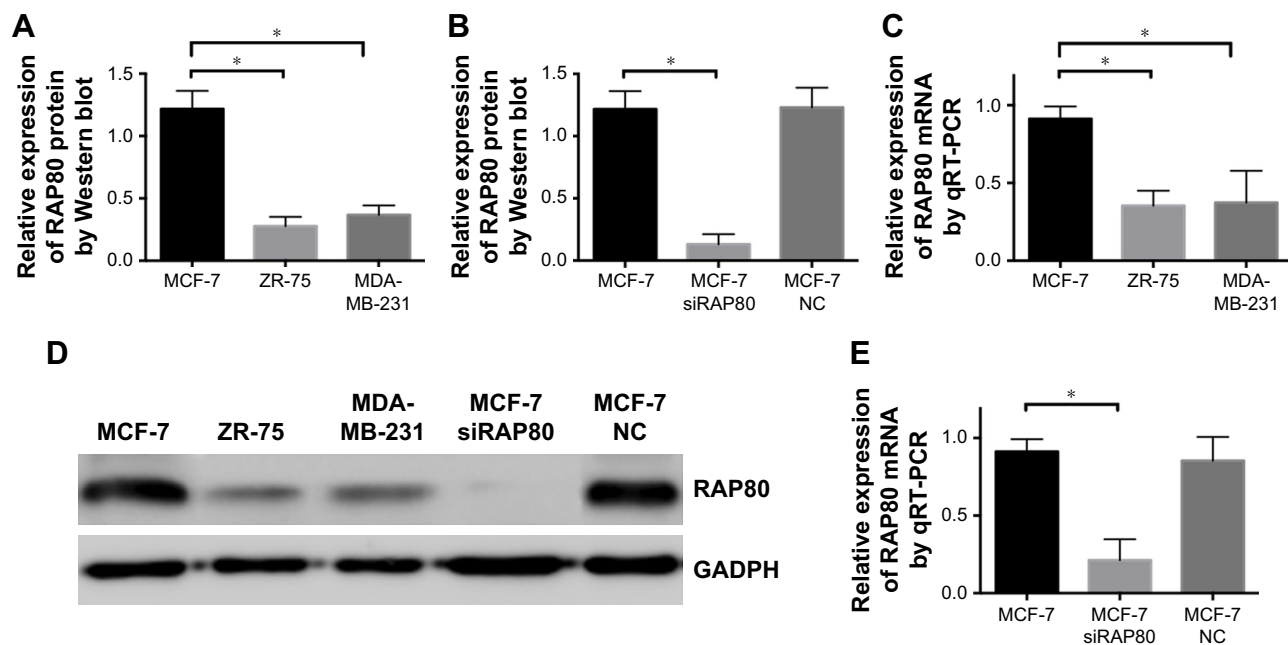
**Abbreviations:** ER, estrogen receptor; PR, progesterone receptor; qRT-PCR, quantitative real-time polymerase chain reaction; TNBC, triple-negative breast cancer.

### Effect of RAP80 siRNA on the expression of apoptosis-related proteins

Western blot results showed that siRNA transfection upregulated the protein expression of Caspase-3, cleaved Caspase-3, Apaf-1, Cytochrome C, and Bax ( $P<0.05$ , Figure 6), and it downregulated the mRNA and protein expression of Bcl-2 ( $P<0.05$ , Figure 6). Protein levels analyzed by Western blot also confirmed this result (Figure 6).

### Discussion

DDR is a series of regulatory events including DNA damage, regulation of DNA replication, cell cycle arrest, and repair or bypass of DNA damage to ensure the maintenance of genomic stability and cell viability.<sup>9</sup> The deregulation



**Figure 2** Expression patterns of RAP80 in breast cancer cell lines.

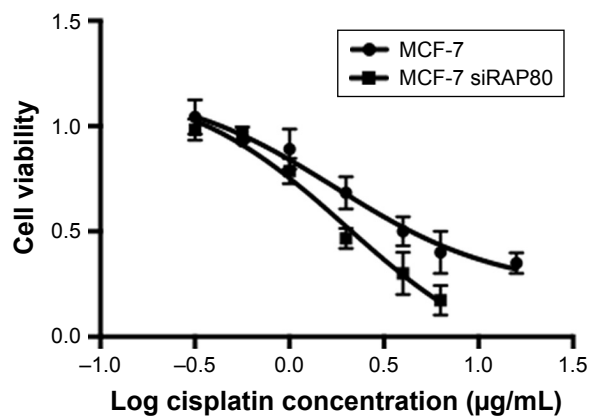
**Notes:** Total RNA and proteins were extracted from wild-type MCF-7, ZR-75, and MDA-MB-231, then subjected to qRT-PCR and Western blotting for RAP80. Both protein (A–D) and mRNA (C, E) expression of RAP80 were observed consistently in MCF-7, but ZR-75 and MDA-MB-231 had very weak RAP80 mRNA and protein expression. Therefore, we picked MCF-7 for transfection with RAP80 siRNA. Data are presented as mean  $\pm$  SD of three independent experiments, \* $P$ <0.05 vs MCF-7 group.

**Abbreviations:** NC, normal control; qRT-PCR, quantitative real-time polymerase chain reaction.

of DDR results in genomic instability, which can lead to tumorigenesis.<sup>10</sup> A complete DDR can help prevent malignancy; however, once cancer is present DDR can blunt the efficacy of chemotherapy and radiotherapy that causes lethal DNA breakage in cancer cells.<sup>11</sup> RAP80, a UIMC1 protein which contains a tandem SUMO UIM, plays a key role in DDR signaling.<sup>12,13</sup> What about RAP80's role in breast cancer? In the present study, we sought to investigate the expression of RAP80 in invasive breast cancer and its paired normal

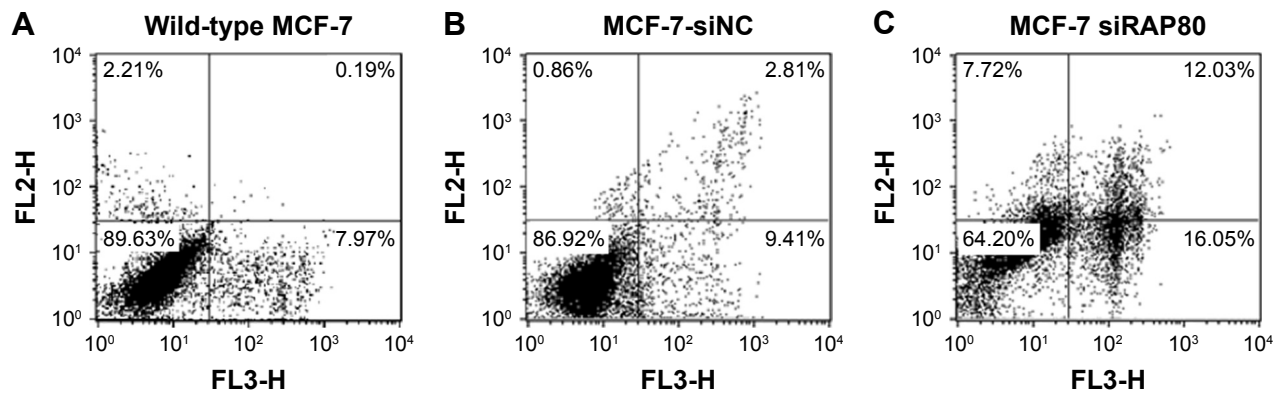
breast tissues. Our results indicated that RAP80 expression in breast cancer (62.3%, 101/162) was significantly lower than that in adjacent normal breast tissues ( $P$ <0.05). And the low expression of RAP80 was related to positive lymph node metastasis, TNM stage, negative ER or PR expression, and high level of Ki67 proliferation index in breast cancer patients. A previous study indicated that RAP80 is a well-known DNA repair protein related to DDR – the existence of crosstalk mechanisms linking the DDR mechanism and hormone signaling pathways cooperate to influence both cancer progression and therapeutic response.<sup>14</sup> Recent evidence has suggested that the suppression effect of DDR by estrogen altered the response of cancers to antihormone treatment or chemotherapy that induces DNA damage.<sup>15</sup> Downregulation of endogenous RAP80 expression by siRNA reduced ER $\alpha$  protein level, and RAP80 may be an important modulator of ER $\alpha$  activity.<sup>16</sup>

Ki67 proliferation index is an important prognostic factor in breast cancer, it is expressed in all phases of cell cycle except G0 and serves as a prognostic and predictive marker for breast cancer.<sup>17,18</sup> Our results suggested that low RAP80 expression was correlated with high Ki67 levels. What about its role in breast cancer? Is it related to breast cancer cell proliferation? We found that mRNA and protein expression of RAP80 were obvious in MCF-7 and very weak in ZR-75 or MDA-MB-231. So we transfected MCF-7 with



**Figure 3** The Effect of RAP80 siRNA transfection on cell proliferation by MTT in wild-type MCF-7 or MCF-7 RAP80 siRNA.

**Notes:** The survival rate of both cells decreased in a dose-dependent manner and the IC50 value for cisplatin in MCF-7 RAP80 siRNA cells was 0.83  $\mu$ g/mL, and 1.69  $\mu$ g/mL in wild-type MCF-7. Cell viability was measured by MTT; n=3 for each data point.



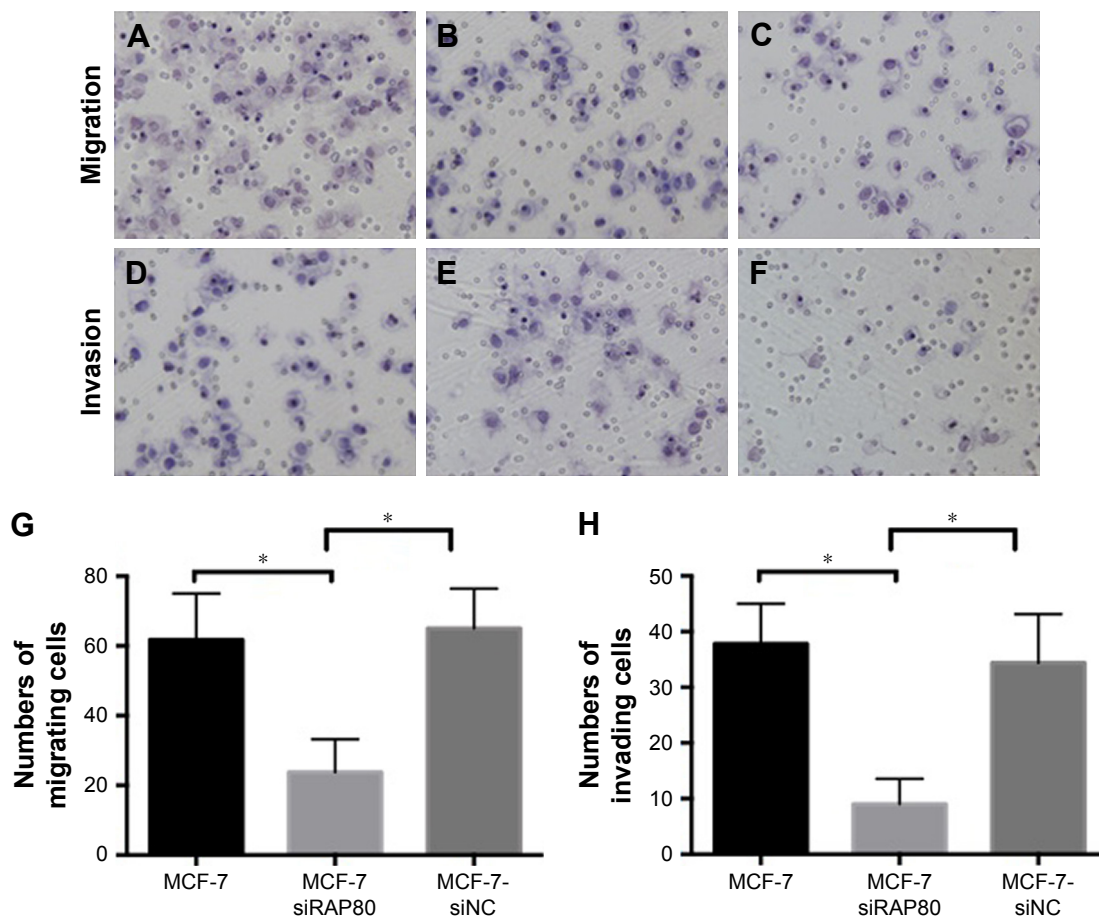
**Figure 4** Apoptosis rates.

**Notes:** Apoptosis rate of wild-type MCF-7 (A), MCF-7-siNC (B), and MCF-7-siRAP80 (C) was assessed by the Annexin V-FITC-labeled FACS method. MCF-7 transfected with siRAP80 showed a higher percentage of apoptotic cells than wild-type MCF-7 or MCF-7-siNC.

**Abbreviation:** NC, normal control.

RAP80 siRNA to further investigate the role of RAP80 in MCF-7. Kim et al reported that the knockdown of RAP80 in HeLa cells treated with ionizing radiation showed a defective G2/M checkpoint control.<sup>19</sup> Our results indicated that

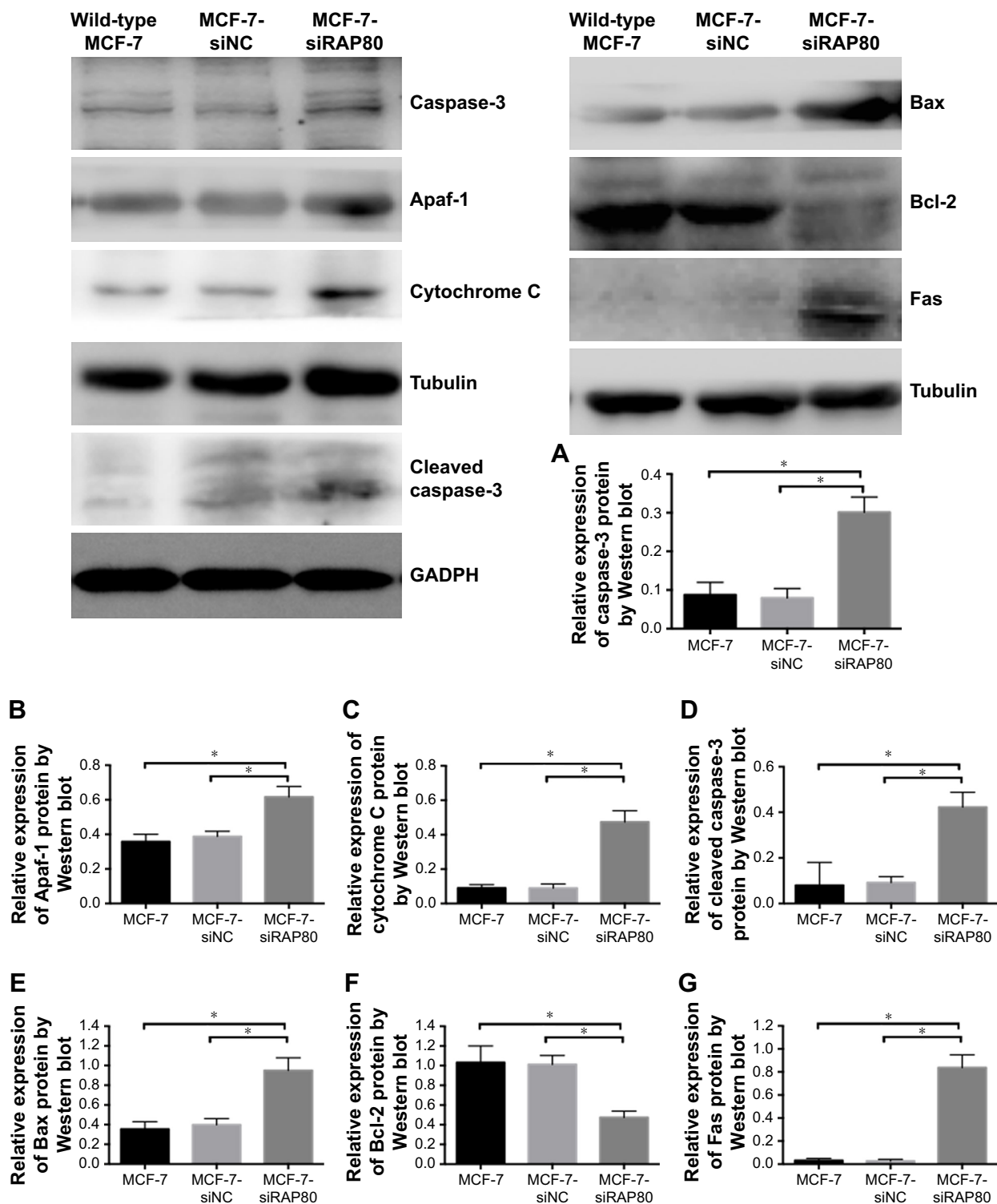
RAP80 can significantly inhibit cell growth, participate in G2/M checkpoint regulation, and promote cell apoptosis in MCF-7. RAP80 siRNA also promoted expression of apoptosis-related proteins and decreased invasive ability. If



**Figure 5** RAP80 siRNA transfection decreased the invasive or migrating ability of MCF-7 breast cancer cells.

**Notes:** Transwell migration assay shows the migrating ability of wild-type MCF-7 (A), MCF-7-siNC (B), and MCF-7 siRAP80 (C) at 72 hours after transfection. (G) Number of cells migrating onto the lower surfaces of the filter was counted. The transwell migration assay shows the invasive ability of wild-type MCF-7 (D), MCF-7-siNC (E), and MCF-7 siRAP80 (F) at 72 hours after transfection (H). Number of cells invading onto the lower surfaces of the filter was counted. Data are presented as mean  $\pm$  SD of three independent experiments. \* $P < 0.05$  vs MCF-7 siRAP80 group.

**Abbreviation:** NC, normal control.



**Figure 6** RAP80 siRNA transfection upregulated the expression of apoptotic proteins in MCF-7 cells. **Notes:** Western blot results showed that the siRNA transfection upregulated the protein expression of Caspase-3, cleaved Caspase-3, Apaf-1, Cytochrome C, Bax, and Fas, and it downregulated the mRNA and protein expression of Bcl-2. Protein levels analyzed by Western blot also confirmed this result (A–G). Data are presented as mean ± SD of three independent experiments, \**P*<0.05 vs MCF-7 siRAP80 group.

cells detect DNA damage, they relay the signal via kinases to executors, which in turn evoke a process that inhibits cell cycle progression and provokes DNA repair or, if this fails, activate the receptor and/or mitochondrial apoptotic

cascade. It is well known that RAP80 plays a central role in the damage response by targeting BRCA1/BRCA2 tumor suppressors to DNA damage foci.<sup>20</sup> DDR proteins are potent inducers of cell death triggered by apoptosis.<sup>21</sup>



Previous research indicated that RAP80 interacts with BRCA1 and is critical for efficient repair through DNA damage-induced homology-directed recombination and in cell cycle checkpoint control. They found that UV irradiation can induce the RAP translocation to DNA damage foci, which is dependent on the UIMs of RAP80 and that the UV-induced phosphorylation of RAP80 at Ser205 is mediated by ATR.<sup>22</sup> RAP80 opposes homologous recombination by inhibiting DNA end-resection and sequestering BRCA1 into the BRCA1-A complex.<sup>23</sup> BRCA1 can reduce apoptosis caused by chemotherapy drugs, and it can be used as a marker for predicted chemoresistance. Cisplatin is an antitumor drug widely used to treat breast cancer, especially triple negative breast cancer. Its primary biological target is genomic DNA, and it causes a plethora of DNA lesions that block transcription and replication.<sup>24</sup> DNA repair and DNA damage tolerance play crucial roles in the response to cisplatin treatment, making DDR and repair proteins tempting therapeutic targets to modulate chemoresistance, sensitize tumor cells to cisplatin, and enhance chemotherapeutic efficiency.<sup>25</sup> Our results showed that the apoptosis of MCF-7 was significantly higher after RAP80 siRNA combined with cisplatin than after treatment with control siRNA with cisplatin. Tumor cells can activate protective responses to inhibit cell cycle progression, which may be related to RAP80, and repair cisplatin-induced DNA damage. RAP80 is related to BRCA1's effect, which can be used as an interesting target for pharmacological modulation that can increase the efficiency of cisplatin chemotherapy.

## Conclusion

RAP80 expression is related to ER or PR activity. RAP80 siRNA can also increase the chemosensitivity of MCF-7 to cisplatin. It is related to carcinogenesis of ER negative breast cancer, and it may be a potential target for future breast cancer therapy. More clinical investigations are required to determine a drug which targets RAP80 which can be used in breast cancer therapy.

## Ethics statement

The clinicopathological information of each patient was reviewed. All the patients who enrolled in this study had signed an informed consent form agreeing to participate in this study and for publication of the results. The study was reviewed and approved by the Ethics Committee of China Medical University (Shenyang, People's Republic of China) and the participating hospital, the First Hospital of China Medical University. The study was carried out in accordance with the principles of the Declaration of Helsinki.

## Acknowledgments

This work was supported by National Natural Science Foundation of China (no 81201886). The funders had no role in study design, data collection and analysis, decision to publish, or preparation of the manuscript.

## Author contributions

GJ and XM wrote the manuscript. ZQ and GJ collected the data, ZQ and XM analyzed the data. FJ supervised the research. All authors contributed to data analysis, drafting and revising the article, gave final approval of the version to be published, and agree to be accountable for all aspects of the work.

## Disclosure

The authors report no conflicts of interest in this work.

## References

1. Chung HJ, Korm S, Lee SI, et al. RAP80 binds p32 to preserve the functional integrity of mitochondria. *Biochem Biophys Res Commun*. 2017;492(3):441–446.
2. Morgan CJ, Dodds CM, Furby H, et al. Long-term heavy ketamine use is associated with spatial memory impairment and altered hippocampal activation. *Front Psychiatry*. 2014;5:149.
3. Kang DH, Stress O. DNA damage, and breast cancer. *AACN Clin Issues*. 2002;13(4):540–549.
4. Wang B, Matsuoka S, Ballif BA, et al. Abraxas and RAP80 form a BRCA1 protein complex required for the DNA damage response. *Science*. 2007;316(5828):1194–1198.
5. Ali R, Rakha EA, Madhusudan S, Bryant HE. DNA damage repair in breast cancer and its therapeutic implications. *Pathology*. 2017; 49(2):156–165.
6. Akbari MR, Ghadirian P, Robidoux A, et al. Germline RAP80 mutations and susceptibility to breast cancer. *Breast Cancer Res Treat*. 2009;113(2):377–381.
7. Bonanno L, Costa C, Majem M, Favaretto A, Ruge M, Rosell R. The predictive value of BRCA1 and RAP80 mRNA expression in advanced non-small-cell lung cancer patients treated with platinum-based chemotherapy. *Ann Oncol*. 2013;24(4):1130–1132.
8. Mao X, Fan C, Yu X, Chen B, Jin F. DDEF1 correlated with Rho GTPases activity in breast cancer. *Oncotarget*. 2017;8(68):112487–112497.
9. Liu W, Li J, Song YS, Li Y, Jia YH, Zhao HD. Cdk5 links with DNA damage response and cancer. *Mol Cancer*. 2017;16(1):60.
10. O'Connor MJ. Targeting the DNA damage response in cancer. *Mol Cell*. 2015;60(4):547–560.
11. Sahin I, Mega AE, Carneiro BA. Androgen receptor-independent prostate cancer: an emerging clinical entity. *Cancer Biol Ther*. 2018; 19(5):347–348.
12. Guzzo CM, Berndsen CE, Zhu J, et al. RNF4-dependent hybrid SUMO-ubiquitin chains are signals for RAP80 and thereby mediate the recruitment of BRCA1 to sites of DNA damage. *Sci Signal*. 2012; 5(253):ra88.
13. Yan J, Menendez D, Yang XP, Resnick MA, Jetten AM. A regulatory loop composed of RAP80-HDM2-p53 provides RAP80-enhanced p53 degradation by HDM2 in response to DNA damage. *J Biol Chem*. 2009;284(29):19280–19289.
14. Schiewer MJ, Knudsen KE. Linking DNA damage and hormone signaling pathways in cancer. *Trends Endocrinol Metab*. 2016;27(4): 216–225.
15. Caldon CE. Estrogen signaling and the DNA damage response in hormone dependent breast cancers. *Front Oncol*. 2014;4:106.

16. Yan J, Kim YS, Yang XP, Albers M, Koegl M, Jetten AM. Ubiquitin-interaction motifs of RAP80 are critical in its regulation of estrogen receptor alpha. *Nucleic Acids Res.* 2007;35(5):1673–1686.
17. Pathmanathan N, Balleine RL. Ki67 and proliferation in breast cancer. *J Clin Pathol.* 2013;66(6):512–516.
18. Yerushalmi R, Woods R, Ravdin PM, Hayes MM, Gelmon KA. Ki67 in breast cancer: prognostic and predictive potential. *Lancet Oncol.* 2010;11(2):174–183.
19. Kim H, Chen J, Yu X. Ubiquitin-binding protein RAP80 mediates BRCA1-dependent DNA damage response. *Science.* 2007;316(5828):1202–1205.
20. Yang Q, Lin W, Liu Z, et al. RAP80 is an independent prognosis biomarker for the outcome of patients with esophageal squamous cell carcinoma. *Cell Death Dis.* 2018;9(2):146.
21. Roos WP, Kaina B. DNA damage-induced cell death: from specific DNA lesions to the DNA damage response and apoptosis. *Cancer Lett.* 2013;332(2):237–248.
22. Yan J, Yang XP, Kim YS, Jetten AM. RAP80 responds to DNA damage induced by both ionizing radiation and UV irradiation and is phosphorylated at Ser 205. *Cancer Res.* 2008;68(11):4269–4276.
23. Lombardi PM, Matunis MJ, Wolberger C. RAP80, ubiquitin and SUMO in the DNA damage response. *J Mol Med (Berl).* 2017;95(8):799–807.
24. Basu A, Krishnamurthy S. Cellular responses to Cisplatin-induced DNA damage. *J Nucleic Acids.* 2010:Article ID 201367.
25. Rocha CR, Silva MM, Quinet A, Cabral-Neto JB, Menck CFM. DNA repair pathways and cisplatin resistance: an intimate relationship. *Clinics (Sao Paulo).* 2018;73(suppl 1):e478s.

## OncoTargets and Therapy

### Publish your work in this journal

OncoTargets and Therapy is an international, peer-reviewed, open access journal focusing on the pathological basis of all cancers, potential targets for therapy and treatment protocols employed to improve the management of cancer patients. The journal also focuses on the impact of management programs and new therapeutic agents and protocols on

Submit your manuscript here: <http://www.dovepress.com/oncotargets-and-therapy-journal>

patient perspectives such as quality of life, adherence and satisfaction. The manuscript management system is completely online and includes a very quick and fair peer-review system, which is all easy to use. Visit <http://www.dovepress.com/testimonials.php> to read real quotes from published authors.

Dovepress