

# Characterization of a novel *bla*<sub>NDM-5</sub>-harboring IncFII plasmid and an *mcr-1*-bearing IncI2 plasmid in a single *Escherichia coli* ST167 clinical isolate

Lijuan Xu<sup>1,\*</sup>  
Ping Wang<sup>2,\*</sup>  
Jing Cheng<sup>2</sup>  
Shangshang Qin<sup>2,3</sup>  
Weihong Xie<sup>1</sup>

<sup>1</sup>The First Affiliated Hospital of Zhengzhou University, Zhengzhou, Henan 450001, China; <sup>2</sup>School of Pharmaceutical Sciences, Zhengzhou University, Zhengzhou, Henan 450001, China; <sup>3</sup>Key Laboratory of Advanced Drug Preparation Technologies, Ministry of Education, Zhengzhou University, Zhengzhou, Henan 450001, China

\*These authors contributed equally to this work

**Background and purpose:** The spread of the plasmid-mediated, colistin-resistance gene *mcr-1* into New Delhi metallo-β-lactamase (NDM)-producing bacterial isolates can cause untreatable infections. In this study, we conducted a molecular characterization of a novel, conjugative, *bla*<sub>NDM-5</sub>-positive IncFII plasmid (pNDM-EC16-50) together with an *mcr-1*-bearing IncI2 plasmid in a single *Escherichia coli* ST167 clinical isolate EC16-50.

**Methods and results:** EC16-50, which belongs to the *E. coli* strain ST167 and phylogroup A, was identified to co-produce NDM-5 and MCR-1. S1-PFGE and Southern blotting showed that *bla*<sub>NDM-5</sub> and *mcr-1* genes were located on ~95 kb and ~65 kb plasmids, respectively. A conjugation assay revealed that both *bla*<sub>NDM-5</sub>- and *mcr-1*-bearing plasmids were self-transmissible. Comparative plasmid analysis suggested that *bla*<sub>NDM-5</sub>-harboring F2:A-:B-plasmid might have evolved from the well-reported NDM-carrying pMC-NDM-like plasmid via recombination with a locally emerged pSJ\_94 plasmid, whereas the *mcr-1*-carrying IncI2 plasmid was similar to previously reported *mcr-1*-bearing plasmids in China.

**Conclusion and impact:** This study represents the first report of the NDM-5 carrying IncFII- but not IncX3-type plasmid in an MCR-1-producing *E. coli* isolate. More striking was the dissemination of *mcr-1* in a successful epidemic NDM-5-producing *E. coli* clone ST167, which could facilitate the spread of colistin resistance in carbapenemase-producing *E. coli* isolates.

**Keywords:** *Escherichia coli*, ST167, MCR-1, IncFII plasmid, NDM-5

## Introduction

Colistin is considered to be the last resort for the treatment of serious infections caused by carbapenem-resistant *Enterobacteriaceae* (CRE). However, the emergence and dissemination of the plasmid-mediated, colistin-resistance gene *mcr-1* have seriously compromised current treatment options for CRE infections.<sup>1</sup> The spread of the *mcr-1* gene into CRE, such as New Delhi metallo-β-lactamase (NDM)-producing isolates, is of great clinical concern as this results in the emergence of true pan-drug-resistant pathogens. NDM-5, which differs from NDM-1 by two amino-acid substitutions (Val88Leu and Met154Leu) and possesses increased resistance to carbapenems and extended-spectrum cephalosporins, has become a predominant variant expressed by NDM-producing *Escherichia coli* since they were first reported in 2014 in China.<sup>2,3</sup> To date, several cases of infection caused by NDM-5 and MCR-1 co-producing *E. coli* have been reported in the United States and China.<sup>4-10</sup> In these bacterial isolates, the *mcr-1* gene was carried by plasmids of different replicon types, including IncX4, HI2, and I2, whereas the *bla*<sub>NDM-5</sub> gene in each isolate was located on IncX3 plasmids. Nearly all of the published studies

Correspondence: Shangshang Qin  
School of Pharmaceutical Sciences,  
Zhengzhou University, Kexuedadao Road  
No.100, Zhengzhou, Henan 450001,  
China  
Tel/Fax +86 371 6778 1895  
Email qinshangshang@126.com

Weihong Xie  
The First Affiliated Hospital of  
Zhengzhou University, Zhengzhou,  
Henan 450001, China  
Tel +86 371 6769 6508  
Email xiewh1973@sina.com

from China revealed that the *bla*<sub>NDM-5</sub> gene was carried by IncX3-type plasmids in *E. coli* isolates, and *E. coli* ST167 was regarded as an epidemic clone involved in the transmission of the *bla*<sub>NDM-5</sub> gene.<sup>11–14</sup> More recently, two NDM-5-carrying IncF plasmids were identified in *E. coli* ST167 strains from China (pNDM5\_020007, CP025626) and Italy (pNDM-5-IT, MG649062),<sup>15,16</sup> but there have been no reports of NDM-5-encoding IncF plasmids in MCR-1-producing *E. coli*.

In this study, we conducted a molecular characterization of a novel NDM-5-carrying F2:A-:B-plasmid and an IncI2 plasmid co-harboring *mcr-1* and *bla*<sub>CTX-M-55</sub> in a single *E. coli* ST167 clinical isolate. Our results revealed new molecular features of *E. coli* that co-produce NDM-5 and MCR-1.

## Materials and methods

### Bacterial isolates and antimicrobial susceptibility testing

A male patient without a history of foreign travel was admitted to the department of hepatobiliary surgery in a teaching hospital of Zhengzhou University in July 2016. He was diagnosed with bile-duct stones complicated by cholangitis. During the surgery, a bile sample was collected from this patient for microbiological analysis. A multidrug-resistant *E. coli* isolate named EC16-50 was recovered from this bile culture; the isolate was identified using the VITEK<sup>®</sup>2 system (bioMérieux, Marcy-l'Étoile, France) and further confirmed by 16S-rRNA sequencing. Antimicrobial susceptibility testing was conducted using several different assays: the broth microdilution method for ampicillin, piperacillin-tazobactam, cefazolin, ceftazidime, aztreonam, imipenem, meropenem, ciprofloxacin, gentamicin, amikacin, chloramphenicol, doxycycline, tigecycline, and colistin; the agar dilution method for fosfomycin; and the Etest method (AB bioMérieux, Sweden) for trimethoprim/sulfamethoxazole. The results were analyzed according to the Clinical and Laboratory Standards Institute (CLSI) guidelines.<sup>17</sup> Breakpoints for colistin and tigecycline were interpreted according to European Committee on Antimicrobial Susceptibility testing (EUCAST) guidelines ([http://www.eucast.org/clinical\\_breakpoints/](http://www.eucast.org/clinical_breakpoints/)). *E. coli* ATCC 25922 was used as a quality control strain.

### Detection of resistance determinants and bacterial genotyping

The modified Hodge test and the imipenem-EDTA double-disk synergy test were performed according to CLSI guidelines to detect carbapenemase activity.<sup>17</sup> PCR and nucleotide sequencing were employed to screen for the presence of carbapenemase-encoding genes (*bla*<sub>OXA-48-like</sub>, *bla*<sub>IMP</sub>, *bla*<sub>VIM</sub>,

*bla*<sub>KPC</sub> and *bla*<sub>NDM</sub>) and the *mcr-1* gene as described previously.<sup>1,18</sup> Multi-locus sequence typing and phylogenetic grouping were performed according to published protocols (<http://mlst.warwick.ac.uk/mlst/dbs/Ecoli/>) and a previously described method, respectively.<sup>19</sup>

### SI nuclease-pulsed-field gel electrophoresis (SI-PFGE) and Southern blot analysis

To evaluate whether the *bla*<sub>NDM</sub> and *mcr-1* genes were present in plasmids, genomic DNA of *E. coli* EC16-50 was used for SI-PFGE and Southern blotting with *bla*<sub>NDM</sub>- and *mcr-1*-specific probes as previously described.<sup>18</sup> The *Salmonella enterica* serotype Braenderup H9812 was used as the size marker.

### Conjugation assay

A conjugation assay was conducted as previously described using *E. coli* J53 (sodium-azide-resistant strain) as the recipient. Transconjugants were selected on Mueller-Hinton (MH) agar supplemented with sodium azide (100 µg/mL) and imipenem (1 µg/mL) or colistin (2 µg/mL).<sup>18</sup> PCR sequencing and antimicrobial susceptibility testing of the transconjugants were subsequently performed to confirm whether the plasmid was successfully transferred to the recipient.

### Plasmid analysis

For plasmid analysis, each plasmid was transferred to *E. coli* DH5α by electroporation. Transformant colonies were selected on Luria-Bertani agar plates containing imipenem (1 µg/mL) or colistin (2 µg/mL) and were examined for the presence of the *bla*<sub>NDM</sub> and *mcr-1* genes by PCR and sequencing. Plasmid DNA was extracted from a confirmed transformant using a QIAGEN Midi Kit (QIAGEN, Hilden, Germany) and subjected to complete plasmid sequencing using an Illumina MiSeq platform (Shanghai Majorbio Company, Shanghai, China). Sequencing reads were assembled de novo using SOAPdenovo v.2.04 (<http://soap.genomics.org.cn/>). The gaps between different contigs were closed by PCR and sequencing. Prediction and annotation of open reading frames (ORFs) were done with Glimmer 3.02 (<http://cbsc.umd.edu/software/glimmer/>) and Basic Local Alignment Search Tool (BLAST) of the National Center for Biotechnology Information (NCBI) (<https://blast.ncbi.nlm.nih.gov/Blast.cgi>).

### Nucleotide sequence accession numbers

The complete nucleotide sequences of plasmids pEC16-50-MCR and pNDM-EC16-50 have been deposited in GenBank under accession nos. MG515249 and MG515250, respectively.

## Ethics statement

The bile sample and clinical isolate of *E. coli* EC16-50 were generated as part of routine hospital laboratory procedures. The patient's next of kin provided written, informed consent for details that were included in the manuscript.

## Results and discussion

### Isolate characteristics

The antimicrobial susceptibility testing results showed that strain EC16-50 was resistant to all of the  $\beta$ -lactams including carbapenems, fluoroquinolones, gentamicin, amikacin, doxycycline, and colistin, but susceptible to fosfomycin, tigecycline, and trimethoprim/sulfamethoxazole (Table 1). The positive result for the imipenem-EDTA double-disk synergy test revealed that EC16-50 was a metallo- $\beta$ -lactamase producer. Finally, PCR and sequencing showed that EC16-50 co-harbored both *bla*<sub>NDM-5</sub> and *mcr-1* genes.

Strain EC16-50 was assigned to the *E. coli* ST167 strain and phylogroup A. To date, *E. coli* ST167 is classified as an internationally disseminated clonal lineage associated with the global spread of CTX-M-15 extended-spectrum- $\beta$ -lactamase and NDM metallo- $\beta$ -lactamases in humans and

other animals.<sup>20,21</sup> Recently, reports from different parts of China indicated that *E. coli* ST167 exhibited close linkages with the *bla*<sub>NDM-5</sub> gene,<sup>13,14</sup> and dissemination of *mcr-1* within the successful epidemic clone may facilitate further spread of colistin resistance in carbapenemase-producing *E. coli* isolates. This led to the emergence of extensively drug-resistant pathogens. To prevent such pathogens from developing further, the spread of *E. coli* ST167 that co-produces MCR-1 and NDM-5 should be closely monitored in China.

### Plasmid location

S1-PFGE followed by Southern blotting was able to identify that the *bla*<sub>NDM-5</sub> and *mcr-1* genes in EC16-50 were on ~95 kb and ~65 kb plasmids, respectively (Figures S1 and S2). Then we performed conjugative assays to confirm their transferability, and both *mcr-1*- and *bla*<sub>NDM-5</sub>-carrying plasmids in EC16-50 were successfully transferred into *E. coli* J53.

### Characterization of the *bla*<sub>NDM-5</sub>-carrying plasmid

We found that the *bla*<sub>NDM-5</sub>-carrying plasmid, named pNDM-EC16-50, was 95,724 base pairs (bp) in size. It consisted of an

**Table 1** Antibiotic susceptibilities of *E. coli* EC16-50, its transformants *E. coli* T-MCR and *E. coli* T-NDM, its conjugants *E. coli* J53-MCR and *E. coli* J53-NDM, and their recipient strains *E. coli* J53 and DH5 $\alpha$

Antimicrobial category	Antimicrobial agent	MIC ( $\mu$ g/mL) <sup>a</sup>						
		EC16-50 <sup>a</sup>	T-MCR <sup>b</sup>	T-NDM <sup>b</sup>	J53-MCR <sup>c</sup>	J53-NDM <sup>c</sup>	J53	DH5 $\alpha$
Penicillins	Ampicillin	>512	>512	>512	>512	>512	4	<2
Antipseudomonal penicillins + $\beta$ -lactamase inhibitors	Piperacillin/tazobactam	>512	>512	>512	>512	>512	4	<4
Non-extended-spectrum cephalosporins	Cefazolin	>512	>512	>512	>512	>512	2	<4
Extended-spectrum cephalosporins	Ceftazidime	>512	32	256	32	512	<0.25	<0.06
Carbapenems	Imipenem	128	<0.25	32	<0.25	64	<0.25	<0.06
	Meropenem	128	<0.25	32	0.25	32	4	<0.06
Monobactams	Aztreonam	512	32	1	64	<1	0.25	<0.06
Fluoroquinolones	Ciprofloxacin	64	<0.25	<0.25	<0.25	<0.25	<0.25	<0.06
Aminoglycosides	Gentamicin	>512	2	64	<1	64	<0.25	1
	Amikacin	>512	2	512	1	>512	4	1
Folate pathway inhibitors	Trimethoprim/sulfamethoxazole	2.5	2.5	5	2.5	2.5	<0.15	<0.15
Phenicol	Chloroamphenicol	128	4	2	256	4	4	1
Phosphonic acids	Fosfomycin	<1	<1	<1	<1	<1	<1	<1
Tetracyclines	Doxycycline	32	1	1	16	2	1	1
Glycylcyclines	Tigecycline	0.5	0.25	0.5	0.5	0.25	0.25	0.25
Polymyxins	Colistin	8	2	<0.25	4	1	1	1

**Notes:** <sup>a</sup>MICs were determined by broth dilution as proposed by CLSI and interpreted using its guidelines. <sup>b</sup>*E. coli* EC16-50 is positive for *mcr-1* and NDM-5. <sup>c</sup>T-MCR and T-NDM are transformants of *E. coli* EC16-50. <sup>d</sup>J53-MCR and J53-NDM are conjugants of *E. coli* EC16-50.

**Abbreviations:** MIC, minimum inhibitory concentration; CLSI, Clinical and Laboratory Standards Institute.

average guanine and cytosine (GC) content of 51.2% and 84 predicted ORFs. The replication region of pNDM-EC16-50 comprised *repA2*, *repA1*, and *repA4* and was completely identical to other F2:A-B-plasmids, such as pMC-NDM (HG003695) and pGUE-NDM (JQ364967). BLASTn results for pNDM-EC16-50 against the NCBI non-redundant database showed that the plasmid shared 99% identity with several IncFII-type plasmids carrying *bla*<sub>NDM</sub> (including pMC-NDM, pGUE-NDM, pEC1188-NDM16 [MH213345], pLZ135-NDM [MF353156], and pCC1409 [KT725789]), with query coverages ranging from 70% to 81%. The *bla*<sub>NDM-5</sub>-containing multidrug resistance mosaic region (MRR) in pNDM-EC16-50 was almost identical to that of pMC-NDM, except for 1) two point mutations in *bla*<sub>NDM-1</sub> leading to the occurrence of the *bla*<sub>NDM-5</sub> allele, 2) a 160-bp sequence insertion between the IS26 and  $\Delta$ IS*Aba125* elements, and 3) an intact ISCR1 element without IS26 inserted. The extensive backbone region upstream of the conjugative transfer operon *tra-trb* in pNDM-EC16-50 showed new features compared to typical *bla*<sub>NDM</sub>-harboring IncFII plasmids, such as pGUE-NDM (*bla*<sub>NDM-1</sub>) and pMC-NDM (*bla*<sub>NDM-1</sub>) reported in Europe

and pCC1409 (*bla*<sub>NDM-5</sub>) reported in Korea (Figure 1B).<sup>22-24</sup> A 13,592 bp fragment in pNDM-EC16-50's backbone region included scaffold genes responsible for plasmid partition (*parM*) and stability (*stbB*) and a group II intron that was virtually identical (100% query coverage, 99.6% identity by BLASTn analysis in NCBI) to the plasmid pGUE-NDM/pMC-NDM (the group II intron is missing from pMC-NDM). As shown in Figure 1A, Region 1 (*ydaAB-ydbA-ycdA-ssb-parB-plsB-plsA-mok-hok-yubOP-X-polypeptide*), which is present in both pGUE-NDM and pMC-NDM, was replaced by a 16,182 bp pSJ\_94 (CP011064)-derived accessory module (100% query coverage and 100% nucleotide identity; designated as Region 2) composed of mobile genetic elements and a number of functional genes, such as those encoding putative alpha-galactosidase, lactose permease, and sucrose-6-phosphate hydrolase (Figure 1A). In addition, we observed that the entire *tra-trb* region, excluding *traX* gene in pNDM-EC16-50, was more similar to its counterpart on pSJ\_94, except for 1) a 50-nucleotide difference in the *traI* gene, 2) a 1-nucleotide difference in the *traT* and *traP* genes, and 3) the number of CAACAGCCA tandem repeats in the *traD* gene

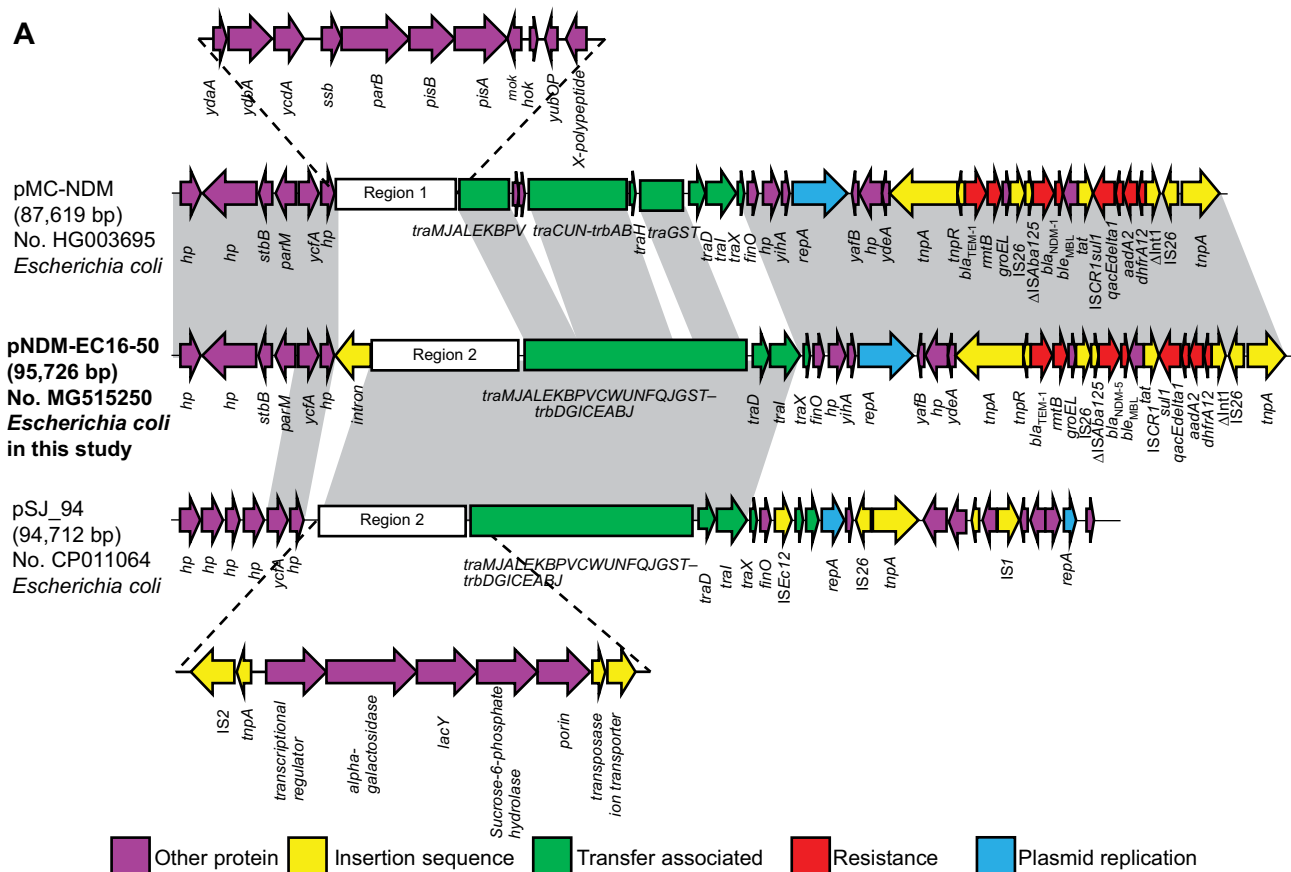
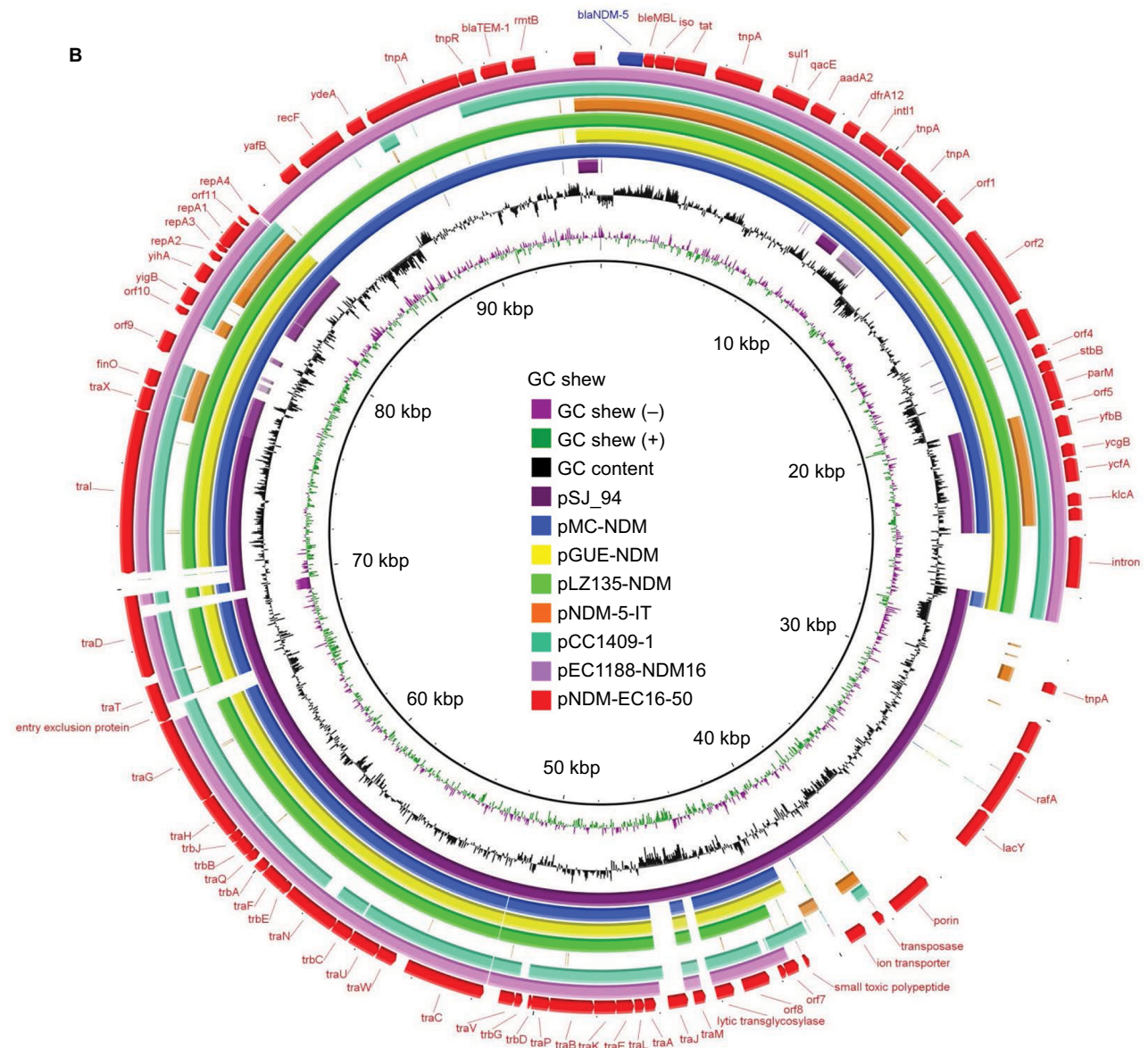


Figure 1 (Continued)



**Figure 1** Plasmid characterization of NDM-5-bearing plasmids and closely related plasmids.

**Notes:** Light gray shading indicates homologous regions (>99% DNA identity). **(A)** A linear depiction of the primary structural characteristics of pNDM-EC16-50 compared to plasmids pMC-NDM (HG003695) and pSJ\_94 (CP011064). The different boxed arrows indicate the positions, directions of transcription, and predicted function of the genes. **(B)** Circular comparison between the FII plasmid pNDM-EC16-50 and other reported similar plasmids. The plasmid pNDM-EC16-50 (the outer circle) was used by the BRIG software as a reference plasmid to perform the sequence alignment with BLASTn. The different colors indicate different plasmids and are listed in the color key.

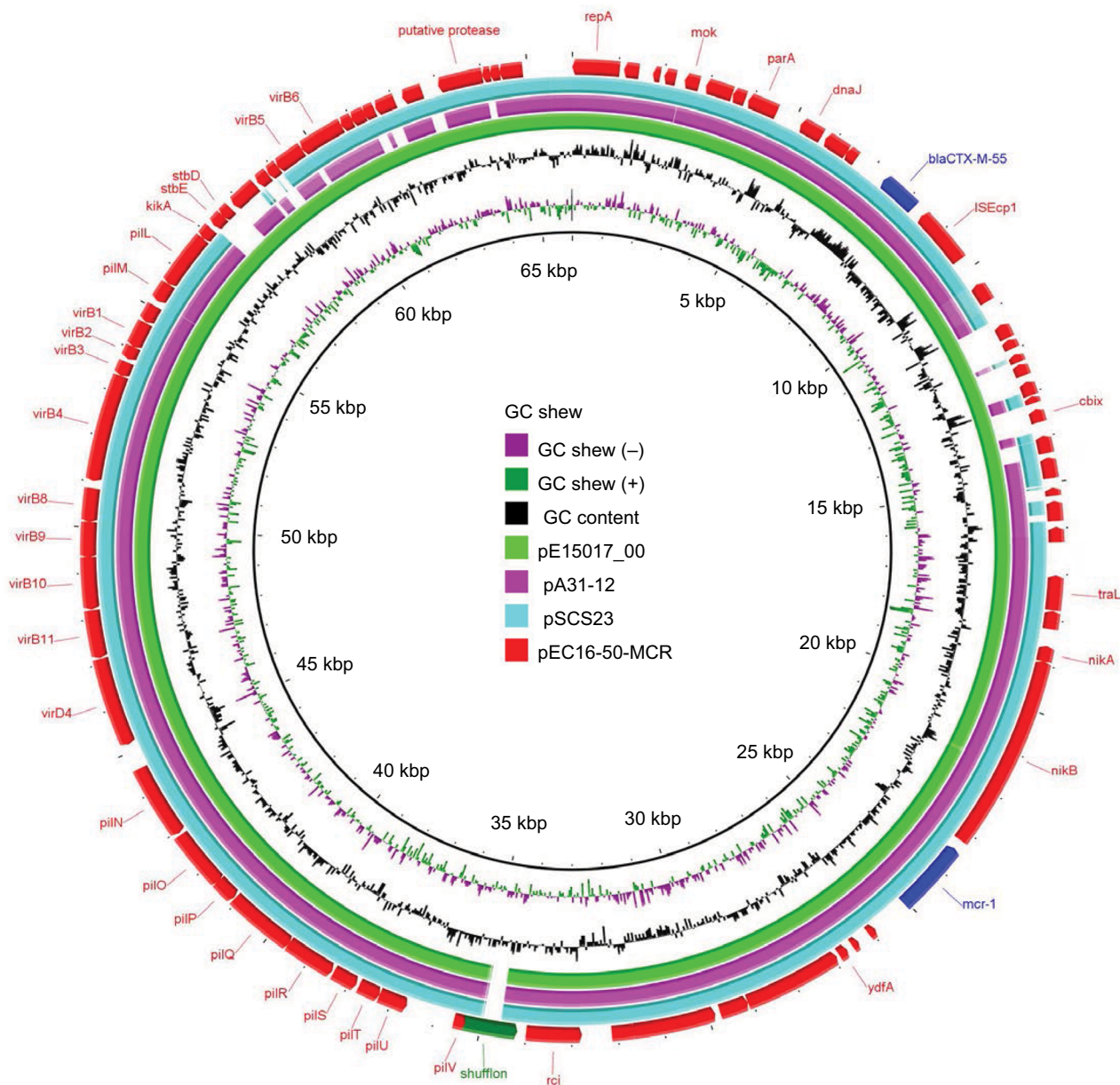
(61 and 11 repeats in pNDM-EC16-50 and pSJ\_94, respectively). Thus, the overall structure of pNDM-EC16-50 can be divided into two distinct modules (Figure 1A): an ~47.9 kb pMC-NDM-derived module containing the IncFII replication region, partial backbone region, and the entire MRR and an ~47.8 kb pSJ\_94-like module encompassing multiple functional genes and the *tra-trb* gene clusters. These findings suggested that pNDM-EC16-50 might have evolved from a recombination of the *bla*<sub>NDM-5</sub>-carrying F2:A-A:B- type pMC-NDM-like plasmid and the pSJ\_94-like plasmid belonging to

F36:A4:A20:B- type. Moreover, we speculated that pNDM-EC16-50 may have been created by Region 2 of a pSJ\_94-like plasmid displacing Region 1 on a pMC-NDM-like plasmid.

Previous studies from China revealed that the IncX3-type pNDM-MGR194-like plasmid contributed to the dissemination of the *bla*<sub>NDM-5</sub> gene among *Enterobacteriaceae*, and *bla*<sub>NDM-5</sub> gene is mostly carried on this type of plasmid in *E. coli* ST167.<sup>12,13</sup> Recently, two novel *bla*<sub>NDM-5</sub>-positive IncF plasmids harboring two or more IncF replicons belonging to F36:A4:B- (pNDM5\_020007, China) and F36:F31:A4:B1

(pNDM-5-IT, Italy) plasmid types were identified in *E. coli* ST167 strains.<sup>15,16</sup> In addition, three *bla*<sub>NDM-5</sub>-carrying IncFII-type plasmids, whose sequences were submitted to the GenBank database in 2017, were detected in clinical *E. coli* (pGZ3\_NDM5, CP017981 and pLZ135-NDM, MF353156) isolates and the *S. enterica* serovar Typhimurium strain (pST41-NDM, CP019444) in China.<sup>8,25</sup> These observations, together with our findings, suggested that conjugative IncFII-type plasmids might have emerged as a potential vehicle (other than the IncX3-type plasmid) to mediate the spread of *bla*<sub>NDM-5</sub> in China. In this study, the transfer fre-

quency of pNDM-EC16-50 determined by conjugation assay ( $2.5 \times 10^{-7}$  transconjugants per donor cell) was much lower than that of the representative *bla*<sub>NDM</sub>-bearing IncFII plasmids pGUE-NDM ( $2.5 \times 10^{-4}$  transconjugants per donor cell) and pMC-NDM ( $2 \times 10^{-3}$  transconjugants per donor cell)<sup>22,23</sup> and *bla*<sub>NDM-1</sub>-bearing IncX3 plasmids ( $10^{-1}$  to  $10^{-5}$  transconjugants per donor cell).<sup>26</sup> In addition, Shin et al reported a prominent instability profile of the *bla*<sub>NDM-5</sub>-bearing IncFII plasmid in a *Klebsiella pneumoniae* isolate.<sup>27</sup> In light of such evidence, we speculated that the low transfer frequency and instability in the host of the IncFII-type plasmid compared to the



**Figure 2** Circular comparison between the *mcr-1*-bearing plasmid pEC16-50-MCR and other reported similar plasmids.

**Notes:** The plasmid pEC16-50-MCR (the outer circle) was used by the BRIG software as a reference plasmid to perform sequence alignments with BLASTn. The different colors indicate different plasmids and are listed in the color key.

IncX3-type plasmid may be responsible for the scarce reporting of *bla*<sub>NDM-5</sub>-bearing IncFII plasmids in NDM-producing *E. coli* isolates. Clearly, these elusive plasmids need closer investigation.

## Characterization of the plasmid bearing *mcr-I*

We found that the *mcr-I*-carrying plasmid in EC16-50, named pEC16-50-MCR, was 65,978 bp in size and belonged to the IncI2 incompatibility group. It contained 80 ORFs and had an average GC content of 42.6%. We further revealed that pEC16-50-MCR consisted of 1) a typical IncI2 plasmid backbone region that is responsible for plasmid replication, maintenance, and transfer, 2) a 3,090 bp *ISEcpI-bla*<sub>CTX-M-55</sub> transposition unit, and 3) a 2,471 bp *mcr-I* cassette composed of the *mcr-I* gene and a PAP2-like ORF (Figure 2). Similar IncI2 plasmids co-harboring *mcr-I* and *bla*<sub>CTX-M-55</sub> genes have been described, such as pA31-12 (KX034083) and pSCS23 (KU934209) in *E. coli* and *S. enterica* isolates, respectively.<sup>28,29</sup> It is noteworthy that an *ISApI1* mobile element was present upstream of the *mcr-I* cassette in both pA31-12 and pSCS23, whereas it was absent in pEC16-50-MCR. Snedrud et al hypothesized that the loss of *ISApI1* during the course of evolution increased the stability of *mcr-I* in plasmid vectors due to *ISApI1*'s pivotal role in the mobilization of *mcr-I*.<sup>30</sup> Therefore, the *mcr-I* cassette lacking *ISApI1* and co-occurring with *bla*<sub>CTX-M</sub> genes on pEC16-50-MCR-like conjugative plasmids may facilitate widespread dissemination of *mcr-I*. A BLASTn comparison revealed that the sequence of pEC16-50-MCR was very similar to that of the plasmid pE15017\_00 (KX772778), with 99% query coverage and 99% nucleotide identity. We found that the major difference between pEC16-50-MCR and pE15017\_00 lay in the shufflon region, a DNA segment that consists of multiple DNA inversions and is involved in site-specific recombination in IncI2-type plasmids.<sup>31</sup> Both segments C and BD of IncI2 shufflons were found to be present in the shufflon region of pEC16-50-MCR, while segment C was found to be missing from pE15017\_00, indicating that rearrangement events had taken place in the shufflon region of pE15017\_00 mediated by the recombinase (Figure 2).

## Conclusion

In summary, we characterized a novel, conjugative, *bla*<sub>NDM-5</sub>-carrying IncFII plasmid that coexists with a self-transmissible IncI2 plasmid harboring both *mcr-I* and *bla*<sub>CTX-M-55</sub> genes in a successful epidemic *E. coli* clone ST167. Unlike IncX3-type plasmids, which are common vehicles for

dissemination of *bla*<sub>NDM-5</sub>, the IncF plasmid is currently only sporadically reported to carry *bla*<sub>NDM-5</sub> in *E. coli* from China. Therefore, the role of this type of plasmid in the dissemination of *bla*<sub>NDM-5</sub> in *E. coli* needs further investigation. In addition, the acquisition of *mcr-I*-bearing plasmids in widespread NDM-5-producing *E. coli* ST167 clones could contribute to the spread of polymyxin resistance within CRE strains. Overall, our study highlights the urgent need for enhanced surveillance of the spread of *E. coli* ST167 strains co-producing MCR-1 and NDM-5.

## Acknowledgments

This work was supported by grant 81501782 from the National Natural Science Foundation of China and the Outstanding Young Teacher Research Fund of Zhengzhou University (32210464).

## Author contributions

All authors contributed toward data analysis, drafting and critically revising the paper and agree to be accountable for all aspects of the work. LX, SQ, and WX designed and supervised the study. PW conducted the primary and confirmatory diagnostics for carbapenemase gene presence, species identification, and bacterial genotyping. PW and JC prepared the samples for Illumina MiSeq, performed the data analyses, and conducted most of the molecular experiments. SQ wrote the manuscript. All of the authors reviewed and approved the final manuscript.

## Disclosure

The authors report no conflicts of interest in this work.

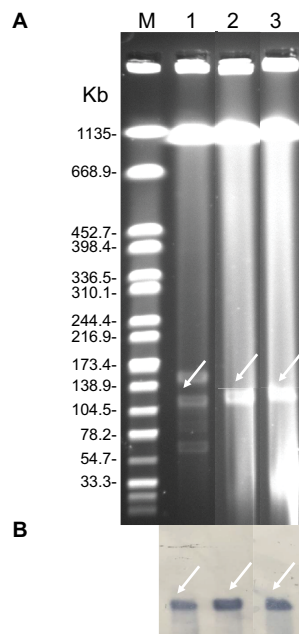
## References

1. Liu Y-Y, Wang Y, Walsh TR, et al. Emergence of plasmid-mediated colistin resistance mechanism MCR-1 in animals and human beings in China: a microbiological and molecular biological study. *Lancet Infect Dis*. 2016;16(2):161–168.
2. Yang P, Xie Y, Feng P, et al. *bla*<sub>NDM-5</sub> carried by an IncX3 plasmid in *Escherichia coli* sequence type 167. *Antimicrob Agents Chemother*. 2014;58:7548–7452.
3. Zhang Y, Wang Q, Yin Y, et al. Epidemiology of Carbapenem-Resistant *Enterobacteriaceae* Infections: report from the China CRE Network. *Antimicrob Agents Chemother*. 2018;62:e01882–17.
4. Mediavilla JR, Patrawalla A, Chen L, et al. Colistin- and carbapenem-resistant *Escherichia coli* Harboring *mcr-I* and *bla*<sub>NDM-5</sub>, causing a complicated urinary tract infection in a patient from the United States: TABLE 1. *mBio*. 2016;7(4):e01191–16.
5. Yu H, Qu F, Shan B, et al. Detection of the *mcr-I* Colistin resistance gene in Carbapenem-resistant *Enterobacteriaceae* from different hospitals in China. *Antimicrob Agents Chemother*. 2016;60(8):5033–5035.
6. Mao J, Liu W, Wang W, et al. Antibiotic exposure elicits the emergence of colistin- and carbapenem-resistant *Escherichia coli* coharboring MCR-1 and NDM-5 in a patient. *Virulence*. 2018;9(1):1001–1007.

7. Feng S, Shen C, Chen H, et al. Co-production of MCR-1 and NDM-5 in *Escherichia coli* isolated from a colonization case of inpatient. *Infect Drug Resist.* 2018;11:1157–1161.
8. Zhang Y, Liao K, Gao H, et al. Decreased Fitness and Virulence in ST10 *Escherichia coli* Harboring  $bla_{NDM-5}$  and *mcr-1* against a ST4981 Strain with  $bla_{NDM-5}$ . *Front Cell Infect. Microbiol.* 2017;7:242.
9. Zheng B, Lv T, Xu H, et al. Discovery and characterisation of an *Escherichia coli* ST206 strain producing NDM-5 and MCR-1 from a patient with acute diarrhoea in China. *Int J Antimicrob Agents.* 2018;51(2):273–275.
10. Liu L, Feng Y, Zhang X, McNally A, Zong Z. New Variant of *mcr-3* in an Extensively Drug-Resistant *Escherichia coli* Clinical Isolate Carrying *mcr-1* and  $bla_{NDM-5}$ . *Antimicrob. Agents Chemother.* 2017;61(12):01757–17.
11. Chen D, Gong L, Walsh TR, et al. Infection by and dissemination of NDM-5-producing *Escherichia coli* in China: Table 1. *J. Antimicrob. Chemother.* 2016;71(2):563–565.
12. Zhang F, Xie L, Wang X, et al. Further Spread of  $bla_{NDM-5}$  in *Enterobacteriaceae* via IncX3 Plasmids in Shanghai, China. *Front Microbiol.* 2016;7:424.
13. Li X, Fu Y, Shen M, et al. Dissemination of  $bla_{NDM-5}$  gene via an IncX3-type plasmid among non-clonal *Escherichia coli* in China. *Antimicrob Resist Infect Control.* 2018;7(1):59.
14. Huang Y, Yu X, Xie M, et al. Widespread Dissemination of Carbapenem-Resistant *Escherichia coli* Sequence Type 167 Strains Harboring  $bla_{NDM-5}$  in Clinical Settings in China. *Antimicrob. Agents Chemother.* 2016;60(7):4364–4368.
15. Feng Y, Liu L, McNally A, Zong Z. Coexistence of Two  $bla_{NDM-5}$  Genes on an IncF Plasmid as Revealed by Nanopore Sequencing. *Antimicrob Agents Chemother.* 2018;62(5):00110–00118.
16. Giufrè M, Errico G, Accogli M, et al. Emergence of NDM-5-producing *Escherichia coli* sequence type 167 clone in Italy. *Int J Antimicrob Agents.* 2018;52(1):76–81.
17. Clinical and Laboratory Standards Institute (CLSI). *Performance Standards for Antimicrobial Susceptibility Testing. CLSI Supplement M100.* 27th ed. Wayne, PA: Clinical and Laboratory Standards Institute; 2017.
18. Qin S, Fu Y, Zhang Q, et al. High incidence and endemic spread of NDM-1-positive *Enterobacteriaceae* in Henan Province, China. *Antimicrob Agents Chemother.* 2014;58(8):4275–4282.
19. Qin S, Zhou M, Zhang Q, et al. First identification of NDM-4-producing *Escherichia coli* ST410 in China. *Emerg Microbes Infect.* 2016;5(1):e118:1–3.
20. Irrgang A, Falgenhauer L, Fischer J, et al. CTX-M-15-producing *E. coli* isolates from food products in Germany are mainly associated with an IncF-Type plasmid and belong to two predominant clonal *E. coli* lineages. *Front. Microbiol.* 2017;8:2318.
21. Grönthal T, Österblad M, Eklund M, et al. Sharing more than friendship – transmission of NDM-5 ST167 and CTX-M-9 ST69 *Escherichia coli* between dogs and humans in a family, Finland, 2015. *Euro Surveill.* 2018;23(27):1560–7917.
22. Bonnin RA, Poirel L, Carattoli A, Nordmann P. Characterization of an IncFII plasmid encoding NDM-1 from *Escherichia coli* ST131. *PLoS One.* 2012;7(4):e34752.
23. Fiett J, Baraniak A, Izdebski R, et al. The first NDM metallo- $\beta$ -lactamase-producing *Enterobacteriaceae* isolate in Poland: evolution of IncFII-type plasmids carrying the  $bla_{(NDM-1)}$  gene. *Antimicrob Agents Chemother.* 2014;58(2):1203–1207.
24. Shin J, Baek JY, Cho SY, et al.  $bla_{NDM-5}$ -bearing IncFII-type plasmids of *Klebsiella pneumoniae* sequence type 147 transmitted by cross-border transfer of a patient. *Antimicrob. Agents Chemother.* 2016;60(3):1932–1934.
25. Li X, Jiang Y, Wu K, et al. Whole-genome sequencing identification of a multidrug-resistant *Salmonella enterica* serovar Typhimurium strain carrying  $bla_{NDM-5}$  from Guangdong, China. *Infect Genet Evol.* 2017;55:195–198.
26. Ho P-L, Li Z, Lo W-U, et al. Identification and characterization of a novel incompatibility group X3 plasmid carrying  $bla_{NDM-1}$  in *Enterobacteriaceae* isolates with epidemiological links to multiple geographical areas in China. *Emerg Microbes Infect.* 2012;1(1):e39:1–6.
27. Shin J, Baek JY, Chung DR, Ko KS. Instability of the IncFII-type plasmid carrying  $bla_{NDM-5}$  in a *Klebsiella pneumoniae* isolate. *J Microbiol Biotechnol.* 2017;27(9):1711–1715.
28. Sun J, Li XP, Yang RS, et al. Complete nucleotide sequence of an IncI2 plasmid coharboring  $bla_{CTX-M-55}$  and *mcr-1*. *Antimicrob Agents Chemother.* 2016;60(8):5014–5017.
29. Yang Y-Q, Zhang A-Y, Ma S-Z, et al. Co-occurrence of *mcr-1* and ESBL on a single plasmid in *Salmonella enterica*. *J Antimicrob Chemother.* 2016;71(8):2336–2338.
30. Snesrud E, He S, Chandler M, et al. A Model for Transposition of the Colistin Resistance Gene *mcr-1* by IS *Apl1*. *Antimicrob. Agents Chemother.* 2016;60(11):6973–6976.
31. Sekizuka T, Kawanishi M, Ohnishi M, et al. Elucidation of quantitative structural diversity of remarkable rearrangement regions, shufflons, in IncI2 plasmids. *Sci Rep.* 2017;7(1):928.

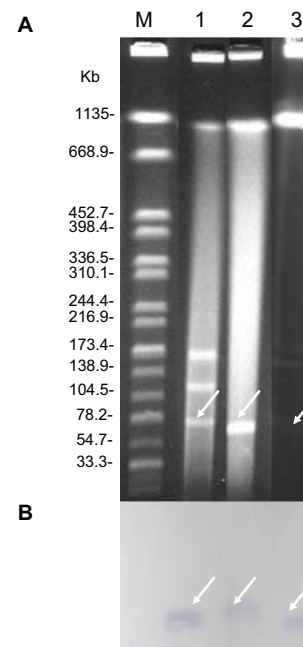


## Supplementary materials



**Figure S1** Identification of NDM-5-carrying plasmids.

**Notes:** (A) Plasmid profiles revealed by S1 nuclease pulsed-field gel electrophoresis. (B) Southern blotting with *bla*<sub>NDM-5</sub>-specific probe. Lane M, reference standard strain H9812 restricted with *Xba*I; Lane 1, 2, and 3 were *E. coli* EC16-50, its transformant T-NDM, and its conjugant J53-NDM, respectively.



**Figure S2** Identification of *mcr-1*-carrying plasmids.

**Notes:** (A) Plasmid profiles revealed by S1 nuclease pulsed-field gel electrophoresis. (B) Southern blotting with *mcr-1*-specific probe. Lane M, reference standard strain H9812 restricted with *Xba*I; Lane 1, 2, and 3 were *E. coli* EC16-50, its transformant T-MCR, and its conjugant J53-MCR, respectively.

### Infection and Drug Resistance

#### Publish your work in this journal

Infection and Drug Resistance is an international, peer-reviewed open-access journal that focuses on the optimal treatment of infection (bacterial, fungal and viral) and the development and institution of preventive strategies to minimize the development and spread of resistance. The journal is specifically concerned with the epidemiology of antibiotic

Submit your manuscript here: <https://www.dovepress.com/infection-and-drug-resistance-journal>

resistance and the mechanisms of resistance development and diffusion in both hospitals and the community. The manuscript management system is completely online and includes a very quick and fair peer-review system, which is all easy to use. Visit <http://www.dovepress.com/testimonials.php> to read real quotes from published authors.

Dovepress