

Severe maternal morbidity (near-miss) and its correlates in the world's newest nation: South Sudan

This article was published in the following Dove Medical Press journal:
International Journal of Women's Health

Fekadu Mazengia Alemu¹
Martina C Fuchs²
Taban Martin Vitale³
Mergani Abdalla Mohamed Salih⁴

¹Department of Midwifery, Juba College of Nursing and Midwifery, Juba, South Sudan; ²Real Medicine Foundation, Los Angeles, CA, USA; ³Real Medicine Foundation, Juba, South Sudan; ⁴Department of Obstetrics and Gynecology, Juba Teaching Hospital, Juba, South Sudan

All authors contributed equally to this work

Background: This study investigates the frequency of near-miss events and compares correlates in the world's newest nation.

Methods: A cross-sectional study was carried out to audit near-miss events and their causes. A total of 1,041 mothers were sampled. Data were gathered using World Health Organization near-miss evaluation tools according to morbidity and organ failure-based criteria. Intensive care unit admission criteria were not used (as there is no functional intensive care unit in Juba Teaching Hospital). Descriptive statistics and bivariate and multivariable logistic regression were used to analyze the data. The study adhered to the Declaration of Helsinki.

Results: Nearly half (49.7%) of the clients were young pregnant women (aged 15–24 years), with a mean age of 25.07±5.65 years. During the study period, there were 994 deliveries, 94 near-misses, and 10 maternal deaths. This resulted in maternal near-miss and mortality rates of 94.1 per 1,000 and 1,007 per 100,000 live births, respectively. Severe maternal outcome and maternal near-miss rates were 10.47 per 1,000 (morbidity-based criteria) and 41.3 per 1,000 (organ failure-based criteria), respectively. The likelihood of mortality was 25% (95% CI 10%–51%) for a ruptured uterus, 9% (95% CI 4%–17%) for severe postpartum hemorrhage, and 11% (95% CI 3%–30%) for eclampsia. Anemia, hemorrhage, and dystocia were the highest contributory factors in the occurrence of maternal near-misses.

Conclusion: The near-miss rate was high. Contributing factors were lack of resources, low quality of primary health care, and delays in care. All near-misses should be regarded as opportunities to improve the quality of maternity care. Health institutes should address delays in conducting interventions, referral barriers, and personnel gaps. Fully functional intensive-care units must be created in all facilities, including Juba Teaching Hospital and other hospitals. Notification policies for all near-miss cases should be in place in all health care units, with a “no shame, no blame” approach.

Keywords: severe maternal morbidity, near-miss, Juba Teaching Hospital, near-miss audit, severe acute morbidity, South Sudan

Introduction

An obstetric near-miss (NM) is a situation in which a woman would have died had she not received quality medical care.¹ Women who endure severe morbidities in the course of pregnancy, childbirth, and the postpartum period can help us to better understand the set of circumstances and avoidable factors that contribute to maternal deaths.² Maternal NM (MNM) was recently defined by the World Health Organization (WHO) as “the near death of a woman from a complication during pregnancy, childbirth, or within 42 days after the termination of pregnancy”.³ NM cases and maternal deaths are together referred to as severe maternal outcomes (SMOs). Data on severe morbidity are vital for policymakers to recognize essential obstetric care. NM findings are also better indicators than maternal mortality alone for planning, monitoring, follow-up, and evaluating safe-motherhood programs.^{1,4,5}

Correspondence: Fekadu Mazengia Alemu
Juba College of Nursing and Midwifery,
PO Box 88, Juba, South Sudan
Email mazengiafek23@gmail.com

The WHO sums up the identification of NM cases in three main classes of criteria: clinical criteria, intervention based or the process of management of NMs, and organ system-dysfunction criteria, such as cardiovascular or respiratory failure.^{3,6} In sub-Saharan Africa, the unacceptably high number of maternal deaths overshadows severe maternal morbidity. For this reason, comprehensive studies on MNMs are of great value to clinical audit and quality improvement.⁷⁻¹⁰

In a WHO survey of maternal and prenatal health in Latin America, for eight countries the mean proportional ratio of NMs was 34 per 1,000 deliveries. Age >35 years, being single, primipara/parity above three, and delivery at public institutions were associated with the occurrence of an NM.¹¹

A study conducted in Sudan's Kassala found that among 9,578 deliveries, the MNM and maternal mortality rates were 22.1 per 1,000 live births and 432 per 100,000 live births, respectively. Hemorrhage accounted for the most common event (40.8%), followed by infection (21.5%). Mortality rates were 22.2%, 10.0%, 10.0%, 8.8%, and 2.4% for infection, dystocia, anemia, hemorrhage, and hypertensive disorders, respectively.¹²

Reproductive health indicators in South Sudan are among the poorest in the world: only about 25% of the population in South Sudan have access to health care. Maternal mortality is 2,054 per 100,000 live births. Since women in South Sudan have an average of six to seven births in their lifetime, this corresponds to approximately 20% of women dying in the process of giving birth.¹³ The major causes of maternal death in South Sudan are similar to most developing countries: infection, hemorrhage, obstructed labor, abortion, and hypertension in pregnancy.^{14,15}

In 2015, South Sudan, a mainly rural country, had an estimated population of around 12,152,000, projected from the 2008 census.¹⁶ After five decades of civil war, the Comprehensive Peace Agreement provided for a referendum in January 2011 and full independence in July 2011. South Sudan is among the least developed countries in the world. The society's infrastructure has been devastated by decades of civil war, and infectious and malnutrition-related diseases run rife, with unacceptably low provisions for health care.¹⁷

Nearly 46.7% of pregnant women attend at least one antenatal-care session. However, only 19.4% of deliveries are institutional deliveries by skilled professionals.^{18,19} Access to comprehensive emergency obstetric and neonatal care is limited. For instance, only 0.5% of pregnancies were delivered by cesarean section at the three teaching hospitals in Juba, Malakal, and Wau.²⁰

Documentation and reporting at health institutions in South Sudan is often poor, and statistics on morbidity and

mortality are scarce, with poor reliability, even in large teaching hospitals like Juba Teaching Hospital (JTH).²¹ No data are available on severe maternal morbidity or NM events in South Sudan. This study investigates the proportion of NM events and their causes, analyzes the mortality index of each event, and compares correlates of NM cases with maternal deaths. These data will be beneficial for program planners in developing countries, specifically South Sudan.

Methods

A cross-sectional study was conducted to audit NM cases from March 20 to June 12, 2016 in JTH. Juba is the nation's capital, and the hospital itself serves >3 million people. It has more than 524 beds and provides all types of services, including obstetric and gynecologic services. Deliveries take place in the maternity ward, where the quantitative data were collected. JTH's maternity unit provides an average of 500 deliveries per month. All women with obstetric and gynecology complications are referred to JTH.

Blood transfusion unfortunately is not a common practice in JTH, because of the scarcity of blood and poor performance of blood banks. Voluntary blood donation is almost nonexistent, and patients' relatives (if they are present) will donate when a need for blood arises. This process usually takes >2 hours. Drugs, including essential drugs, anesthetics, antiseptic solution, and basic consumables, such as gloves, are often unavailable in the hospital. Access to JTH is sometimes difficult, especially at night from some neighborhoods, such as Gumbo and Sherikat, where the bridge is closed every day from 2 pm until morning.

Overall, there is a lack of agreed criteria for documentation of cases of severe maternal morbidity (NMs). Identification of cases varies across studies and is often complex to apply in a developing-country setting.^{22,23} The sample-size formula to estimate a single population proportion is based on the following assumptions: level of confidence 95%, 3% margin of error, and 8% prevalence of NM cases for developing countries.³ Therefore, after adding a 5% nonresponse rate (for refusal to consent and erratum data sheets), the final sample size calculated is 1,041. The sample size was calculated using OpenEpi (<http://www.openepi.com/SampleSize/SSCohort.htm>).

MNM cases

MNM cases were operationalized as any event of obstetric complication that threatened life, near death but not resulting in death, either by chance or because of medical care received during pregnancy, labor, and delivery or within the puerperium period.²⁴ Disease-specific criteria employed by

Filippi et al⁹ were applied. Complications considered were: hemorrhage leading to shock; emergency hysterectomy, coagulation defects and/or blood transfusion ≥ 2 L, hypertensive disorders in pregnancy, including eclampsia, severe preeclampsia, and dystocia, uterine rupture; and impending rupture as a result of prolonged obstructed labor, infection, and severe anemia (hemoglobin level < 7 g/dL).^{9,25}

The WHO tool for evaluating maternal health was adopted to collect the data. The validity and reliability of this tool has been tested elsewhere.²⁶ Data were gathered using the operational definition of NM and morbidity-based and organ failure-based criteria. As there is no functional intensive-care unit (ICU) in JTH, ICU-admission criteria were not used. For each case, data were also collected on sociodemographic characteristics, nature of obstetric complication(s), data on organ and/or system dysfunction, and source of referral. Six senior midwives and house officers were involved in the data collection.

Data entry was carried out using Epi Info version 2000 and analysis using SPSS for Windows version 21. For each obstetric event, the mortality index was calculated to determine the standard of care delivered for each complication. The association of maternal characters with outcome was established using χ^2 tests. $P < 0.05$ indicated statistical significance. A logistic regression model was fitted to the data to determine the effects of predictor variables on the main outcome, which was NM event. The likelihood-ratio statistic was calculated to determine the effect of each cause of NM events to maternal death.

MNM results were calculated: MNM-incidence ratio as number of MNM cases per 1,000 live births, MNM mortality rat as MNMs divided by maternal deaths (higher ratios indicate better care), and mortality index as number of maternal deaths to number of women with NM conditions (higher index values show more women with life-threatening conditions are dying [low quality of care], while lower values suggest good-quality health care).

The study was approved by the Ethical Review Board at the Ministry of Health, Republic of South Sudan, and was performed in accordance with the ethical standards laid down in the 1964 Declaration of Helsinki and its later amendments or comparable ethical standards. Each participant was given a consent form to sign after the purpose and objective of the study had been explained (Figure S1). If the pregnant individual was found to be aged < 18 years, the guardian was given a parent/guardian consent form (Figure S2). Pregnant girls were also given informed-consent forms to ensure their right to decline.

Results

Sociodemographic characteristics

A total of 1,010 mothers at JTH participated in the study (from a total of 1,041 sampled), making the response rate 97.5%. Nearly half (49.7%) the clients visiting JTH's Maternity and Gynecology Unit were young pregnant women (15–24 years of age) at the time of the visit, with a mean age of 25.07 (SD 5.65) years. The majority of respondents (96.6%) were married, with mean and median ages at marriage of 18 and 17 years, respectively (Figure 1). Nearly a third (32.6%) of

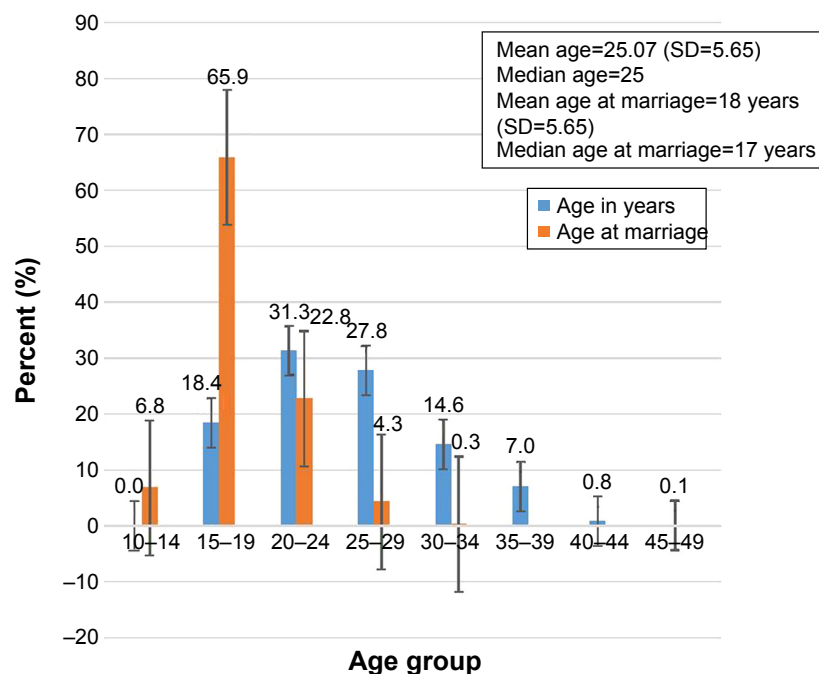


Figure 1 Age at marriage and age distribution of others visiting Juba Teaching Hospital, May–August, 2016.

the mothers did not have formal education. Almost all ethnic groups were represented in the study. The median distance clients traveled was 17.8 km (IQR 799 km; Table 1).

Obstetric characteristics of participants

Table 2 shows obstetric characteristics of the women. Two-thirds (62.8%) of the pregnancies were planned and wanted, which is typical of a country where there is high demand for fertility. Only 128 (12.6%) women were referred from primary health care centers, while the majority of referrals (88.6%) were initiated by either their neighbors or themselves, indicating a poor referral system.

The mean duration of labor among clients was 9.5 hours, with a range of 95 hours. Factors associated with SMOs

(MNM and maternal death) included history of obstetric morbidity ($P=0$), being primigravida ($P=0.03$), and being referred from other health institutes. The evidence of association of the latter was expected, since a referral entails observing signs of some abnormal pregnancy indicators. However, the status of pregnancy (planned vs unplanned), gestational age, and duration of labor were not predictors of SMOs (Table 2).

MNM indicators

Table 3 shows NM indicators of women who received care at JTH during the study period. The total number of live births that took place at JTH during the data-collection period (source population) was documented and used for calculations to produce consistency with maternal mortality-rate results. The severe maternal outcome ratio (SMOR) and MNM ratio were outcome indicators of maternal morbidity events occurring in the population. Accordingly, during the study period there were 994 deliveries, 993 live births, 94 NM cases, ten maternal deaths, and 165 NM events, giving a mean of 1.7 severe life-threatening morbidities per case. This resulted in a total MNM and maternal mortality rate of 94.1 per 1,000 live births and 1,007/100,000 live births, respectively, based on morbidity-based criteria.

The SMOR and MNM ratio were 10.47, based on morbidity-based criteria, and 41.3 per 1,000, based on organ failure-based criteria, respectively. These NM indicators provide a means to estimate the complexity of service that is required by the community served by the health system, and a significant proportion of clients require more multifaceted interventions to endure their complications. The total mortality-index value for NM cases was 9.56% (NM:fatality ratio 1:5.1). The mortality index and MNM mortality ratios provide an estimate of performance. The high mortality-index value highlights that the quality of care provided to severely morbid mothers may need to be reviewed.

Various causes of maternal deaths were identified (Table 4). The likelihood of mortality (posttest odds) was 25% (95% CI 10%–51%) for ruptured uterus (ie, one in four), for severe postpartum hemorrhage 9% (95% CI 4%–17%; ie, around one in eleven), eclampsia 11% (95% CI 3%–30%), sepsis 6% (95% CI 1%–28%), and abortion complications 5% (95% CI 1%–25%). We found eight obstetric fistulae, contributing to 7.7% of the NM cases, giving 8.05 per 1,000 live births. Obstetric fistula cases provide an indicator of the health system’s failure to provide accessible, timely, and appropriate maternal care. Although a cesarean section could

Table 1 Sociodemographic characteristics of clients admitted to JTH, May–August, 2016

	n (%)
Residence	
Urban	828 (82.0)
Rural	182 (18.0)
Total	1,010 (100)
Ethnicity	
Dinka	146 (14.5)
Nuer	55 (5.4)
Bari	261 (25.8)
Zande	25 (2.5)
Other	523 (51.8)
Total	1,010 (100)
Educational status	
Unable to read and write	244 (24.2)
Able to read and/or write only	85 (8.4)
Primary education	368 (36.4)
Senior level	227 (22.5)
Some certificate training	20 (2.0)
College-level education	66 (6.5)
Total	1,010 (100)
Religion	
Catholic	469 (46.4)
Protestant	400 (39.6)
Muslim	89 (8.8)
Others (traditional)	52 (5.1)
Total	1,010 (100)
Marital status	
Single	55 (5.4)
Married	955 (96.6)
Total	1,010 (100)

Abbreviation: JTH, Juba Teaching Hospital.

Table 2 Distribution of respondents by obstetric characteristics among clients admitted to JTH, May–August, 2016

	Severe maternal outcomes			P-value	Remarks
	No	Yes	Total		
Current pregnancy wanted or unwanted					
Wanted and planned	571 (90.1%)	63 (9.9%)	634 (100%)	0.228	
Wanted but unplanned	285 (90.2%)	31 (9.8%)	316 (100%)		
Unwanted and unplanned	50 (83.3%)	10 (16.7%)	60 (100%)		
Total	906 (89.7%)	104 (10.3%)	1,010 (100%)		
History of obstetric morbidity* (eg, PPH, abortion, dystocia, eclampsia)					
No	444 (91.7%)	40 (8.3%)	484 (100%)	<0.0001**	
Yes	200 (85.5%)	34 (14.5%)	234 (100%)		
Total	644 (89.7%)	74 (10.3%)	718* (100%)		
Parity					
Primipara	266 (89.9%)	30 (10.1%)	296 (100%)	0.038*	Mean gravidity 3.1 (SD 2.1) Mean parity 2.9 (SD 2.1)
Multipara	640 (89.6%)	74 (10.4%)	714 (100%)		
Total	906 (89.7%)	104 (10.3%)	1,010 (100%)		
Gestational age					
First trimester (1–12 weeks)	80 (90.9%)	8 (9.1%)	88 (100%)	0.61	Mean 33.6 (SD 12.1)
Second trimester (13–28 weeks)	102 (87.2%)	15 (12.8%)	117 (100%)		
Third trimester (>28 weeks)	724 (89.9%)	81 (10.1%)	805 (100%)		
Total	906 (89.7%)	104 (10.3%)	1,010 (100%)		
Duration of labor					
<24 hours	797 (89.3%)	95 (10.7%)	892 (100%)	0.069	Median 9.5 hours Range 95 hours
>24 hours	27 (79.4%)	7 (20.6%)	34 (100%)		
Total	824 (89.0%)	102 (11.0%)	926 (100%)		
Source of referral					
Health institute	95 (74.2%)	33 (25.8%)	128 (100%)	<0.0001	
Self-referral	648 (91.8%)	58 (8.2%)	706 (100%)		
Neighbor/family	32 (86.5%)	5 (13.5%)	37 (100%)		
Other	131 (94.2%)	8 (5.8%)	139 (100%)		
Total	906 (89.7%)	104 (10.3%)	1,010 (100%)		

Notes: *Associated; **strongly associated.

Abbreviations: JTH, Juba Teaching Hospital; PPH, postpartum hemorrhage.

Table 3 MNM indices among clients admitted to JTH, May–August, 2016

	Morbidity-based	Organ failure-based*	Maternal death	Live births	IUFD	Stillbirths
Total NM cases (n)	94	31	10	993	22	23
MNMR (MNM/LBs) (%)	9.47%	3.12%				
WLTCs (MNM + MDs) (ratio)	10.4	41				
SMOR** (n)	10.47	41.3				
Mortality index (MDs/MNMs + MDs) [#] (n)	9.62	24.4				
MNM mortality ratio (MNM:MDs) ^{###} (n)	10.04	4.1				
MMR (MD/LBs) (n)	1,007.05					
Stillbirth rate						45.3 per 1,000 LBs

Notes: *Only clinical criteria were used; **only laparotomy and fistula combined were considered; [#]the higher the index, the more women with life-threatening conditions die (low quality of care), whereas the lower the index, the fewer women with life-threatening conditions die (better quality of care); ^{###}higher ratios indicate better care.

Abbreviations: MNM, maternal near-miss; JTH, Juba Teaching Hospital; MNMR, MNM ratio; LBs, live births; WLTCs, women with life-threatening conditions; MD, maternal death; SMOR, severe maternal outcome ratio; MMR, maternal mortality ratio; IUFD, intrauterine fetal death; NM, near-miss.

Table 4 Positive likelihood ratio for each near-miss event leading to the probability of presence of maternal death at JTH

	Frequency (n)	Per 100 deliveries	Maternal deaths	Ratio to deaths	Sensitivity	Specificity	Likelihood ratio	Posttest odds (95% CI)
Severe postpartum hemorrhage	46	46.23	4	12:1	40%	55.40%	0.90 (0.41–1.98)	9% (4%–17%)
Eclampsia	19	19.13	2	10:1	20%	87.10%	1.11 (0.30–4.11)	11% (3%–30%)
Sepsis	18	18.12	1	18:1	10%	83.60%	0.52 (0.08–3.51)	6% (1%–28%)
Ruptured uterus	9	9.06	3	3:1	33%	93.70%	3.13 (1.01–9.72)	25% (10%–51%)
Abortion complications	20	20.14	1	20:1	10%	80.00%	0.47 (0.07–3.14)	5% (1%–25%)
Given critical care in isolation ward	40	40.28	5	8:1	50%	62.76%	1.34 (0.69–2.63)	12% (7%–22%)
Fistula	8	8.05	1	8:1	10%	92.56%	1.17 (0.16–8.46)	11% (2%–47%)

Abbreviation: JTH, Juba Teaching Hospital.

have saved many women from death, the overall cesarean section rate at JTH was only 4.49%, which is lower than the WHO recommendation.

Process and outcome indicators related to specific conditions

Based on current evidence, use of the first imposed intervention recommended should be 100%. If first-line intervention use is <95%, this should be taken as an opportunity to improve service. Any laparotomy for uterine rupture done after 3 hours of hospital stay indicates a delay in addressing obstructed labor/uterine rupture. Nearly one in three (33.3%) of laparotomies for ruptured uteri were not done within 3 hours. One mother died before she received laparotomy service for a ruptured uterus. A gap was identified in the use of magnesium sulfate in JTH. Among all women that had eclampsia, 84.2% received magnesium sulfate. Only 36.4% of preterm births received corticosteroid therapy (Table 5).

Table 6 compares the characteristics of MNM cases with those women without severe complications. Having no or lower income, age <18 years, and previous cesarean section were independently associated with MNM incidence. The association between parity, past obstetric complications, current pregnancy complications, and maternal morbidity remained statistically significant after adjustment. As depicted in Figure 2, anemia, pregnancy-related hemorrhage, and dystocia were the highest associated and contributory factors for MNM incidents. A higher adverse pregnancy outcome of 23% (death or admitted to isolation unit was recorded in women who suffered NM complications compared to not-NM cases; *P*=0, Figure 3).

Discussion

This study sought to report MNM and its associated factors in the newest nation – South Sudan. Severe maternal morbidity and maternal mortality indices highlight the standard

of care provided by health institutions. The finding also reveals facility-level and health care system-level opportunities to improve quality of care. Evidence-based practices in the management of women experiencing severe morbidity are lacking.

The present study identified a total of 165 NM events, with a mean of 1.7 severe morbidities per case. This gives an NM prevalence of 9.41% on morbidity-based criteria and 3.1% on organ failure-based criteria. In a recent review in sub-Saharan Africa, the incidence and case-fatality rates for MNMs ranged 1.1%–10.1% and 3.1%–37.4%, respectively.²⁷ Based on Mantel criteria, the WHO systematic review of articles identified MNM-prevalence rates of 0.6% and 14.98% for disease-specific criteria and 0.14%–0.92% for organ dysfunction-based criteria.²⁸

Our results may not be compared to those of developed countries, as we used different selection criteria for NM cases. For instance, criteria for admission to an ICU may be used to select NMs, yet <10% of NM cases in developing countries have access to an ICU.⁸ We did not use these criteria in our study, as there is no ICU at JTH. The hospital offers only a small room with two beds assigned as an ICU in the maternity unit, and the equipment necessary for an ICU is almost nonexistent.

Our findings are in the highest margin compared to average sub-Saharan Africa and WHO findings. Similar trends in NM incidence have been reported in Nepal, Syria, and Indonesia.^{25,27–30} In resource-limited areas, many women’s health condition deteriorates before they reach a higher-level health facility as a result of delays in recognizing the danger signs by these women, their family members, or the first-level health care provider who would then fail to arrange early transfer.⁹

The SMOR and MNM rate were 10.47 per 1,000 live births on morbidity-based criteria and 41.3 per 1,000 live births on organ failure-based criteria. According to the WHO, higher SMOR (eg, over ten per 1,000 live births) indicates

Table 5 Process and outcome indicators related to specific conditions

	n (%)
Prevention of postpartum hemorrhage	
Target population: women giving birth in health care facilities	1,001
Oxytocin use	79.5
Use of any uterotonic (including oxytocin)	29.7
Treatment of severe postpartum hemorrhage	
Target population: women with severe postpartum hemorrhage	46
Oxytocin use	39 (84.8)
Ergometrine	0
Misoprostol	11 (10.6)
Any of the above uterotonics	39 (84.6)
Tranexamic acid	0
Removal of retained products	1 (0.96)
Balloon or condom tamponade	1 (0.96)
Artery ligation	0
Hysterectomy	12 (11.5)
Abdominal packing	0
Anticonvulsants for eclampsia	
Target population: women with eclampsia	19
Magnesium sulfate	16 (84.2)
Other anticonvulsant	0
Any anticonvulsant	16 (84.2)
Prevention of cesarean section-related infection	
Target population: women undergoing cesarean section	45
Prophylactic antibiotic during cesarean section	39 (86.7)
Treatment for sepsis	
Target population: women with sepsis	18
Parenteral therapeutic antibiotics	15 (83.3)
Ruptured uterus	
Target population: women with ruptured uteri	9
Laparotomy	8 (88.9)
Laparotomy after 3 hours of hospital stay	3 (33.3)
Preterm birth	
Target population: women having a preterm delivery	22
Corticosteroids for fetal lung maturation	8 (36.4)

that a considerable proportion of mothers need more complex management to survive complications.²⁶ This is true in the case of JTH. The total mortality index for NM cases was 9.56% (NM:fatality ratio of 1:5.1). This was lower than a report from Sudan (19.5%).¹²

Nine maternal deaths occurred during the study period, showing a relatively high NM:maternal mortality ratio

(10.04). The maternal mortality rate was calculated as 1,007 per 100,000 live births. It has been suggested that maternal mortality of 50–250 per 100,000 live births indicates problems with quality of care, and that >250 per 100,000 live births indicates problems with both quality of care and access.³¹ Therefore, this finding entails auditing and investigating the quality of care in JTH, as well as strengthening the referral system. According to WE Deming, 15% of errors are worker-related, 85% of errors are system-related, and managers are responsible for systems, which bears the truth considering the process indicators obtained in the present study.

In resource-poor settings, it is important to separate NM events that occurred before arrival at the health facility from those that develop after arrival, as the former show a lack of access to health facilities and/or a defect in the referral system.^{2,32} More than two-thirds (70.3% for postpartum hemorrhage and 73% for sepsis) of women in this study with complications developed them within the first 12 hours of admission. More than two-thirds of women were admitted without referral, which demonstrates a defect in the referral system and/or failure of the primary health care units to detect a pregnant women with severe morbidities, which demonstrates a delay in either seeking or reaching care.

Matching the degree of care to severity of complications is the key principle in the management of complications related to pregnancy, labor, and delivery. As a rule, a woman usually requires tailored care from basic emergencies to intensive care at a well-equipped ICU.^{9,33} This study revealed a substantial proportion of women developing organ failure and dying being attributable to the nonexistence of an ICU and dire shortage of essential drug facilities. It can be argued that well-equipped facilities, skilled personnel, and an efficient working system can contribute to averting the toll of severe disability and death.

Our findings indicate an underusage of drugs, such as magnesium sulfate and oxytocin, to treat and/or prevent eclampsia and postpartum hemorrhage, respectively, as well as corticosteroids to induce fetal lung maturation in preterm babies and prophylactic antibiotics during cesarean section. Third delay in the management of obstructed labor was noted.²⁶ Three women with ruptured uteri were operated on after 3 hours, and one woman died before she could be operated on.

In evaluation of the factors associated with the occurrence of severe maternal morbidity/NMs, multiple logistic regression analysis showed only four variables had significant effects: having to undergo a cesarean section in the current pregnancy, presence of comorbidity, having no

Table 6 Characteristics of women who experienced a maternal near-miss (crude and adjusted estimates) in JTH, May–August, 2016

	Near-miss		Crude OR (95% CI)	Adjusted OR (95% CI)	P-value
	No	Yes			
Residence					0.157
Urban	748 (90.3%)	80 (9.7%)	1	–	
Rural	158 (86.8%)	24 (13.2%)	1.42 (0.90–2.31)	0.33 (0.12–0.92)	
Income					0.006*
Have source of income	144 (96.0%)	6 (4.0%)	1	1	
No income/no job	762 (88.6%)	98 (11.4%)	3.09 (1.33–7.17)	3.01 (1.16–7.84)	
Age at marriage, years					
10–18	385 (89.5%)	45 (10.5%)	1	1	
19–30+	333 (90.9%)	35 (9.1%)	0.85 (0.673–1.08)	–	
Estimated distance from home to the JTH					0.516
<10 km	554 (89.2%)	67 (10.8%)	0.13 (0.78–1.66)	–	
>10 km	352 (90.5%)	37 (9.5%)	1	–	
Education					0.053
No formal education	214 (87.7%)	30 (12.3%)	0.985 (0.59–1.64)	–	
Primary education	418 (92.3%)	35 (7.7%)	0.59 (0.36–.95)	–	
Senior and some college	274 (87.5%)	39 (12.5%)	1	–	
Current pregnancy status					0.228
Wanted and planned	571	63	1	–	
Wanted but unplanned	285	31	1.01 (0.64–1.62)	–	
Unwanted and unplanned	50	10	1.68 (0.79–3.57)	–	
Bad obstetric history* (eg, PPH, abortion, dystocia, eclampsia)					0.01*
Yes	444 (91.7%)	40 (8.3%)	1.89 (1.16–3.07)	1.81 (1.26–2.89)	
No	200 (85.5%)	34 (14.5%)	1	–	
Parity					0.038*
Primipara	266 (89.9%)	30 (10.1%)	1	–	
Multipara	640 (89.6%)	74 (10.4%)	0.24 (0.023–2.45)	–	
Medical complications during current pregnancy					0.263
No	418 (88.6%)	54 (11.4%)	1	–	
Yes	488 (90.7%)	50 (9.3%)	0.79 (0.53–1.19)	–	
Current obstetric complications					<0.0001**
No	571 (99.8%)	1 (0.2%)	1	–	
Yes	335 (76.5%)	103 (23.5%)	75.5 (24.38–126)	69.5 (22.2–111)	

Notes: *Associated; **strongly associated.

Abbreviations: JTH, Juba Teaching Hospital; PPH, postpartum hemorrhage.

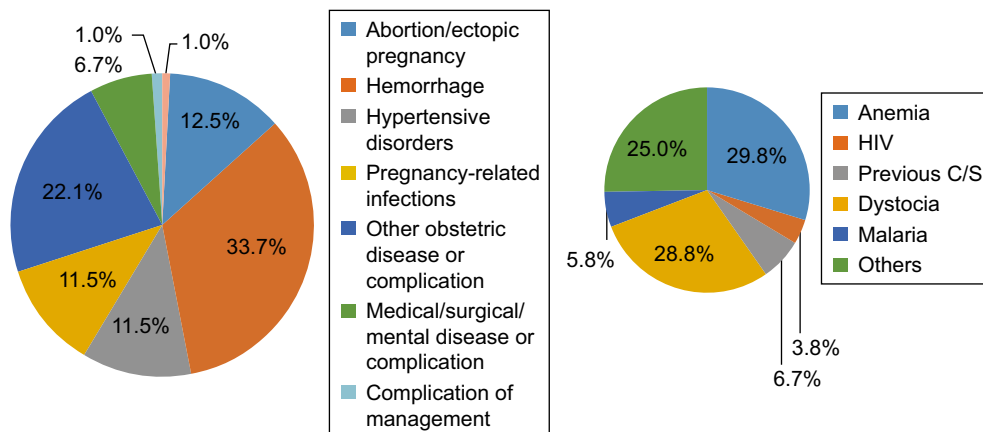


Figure 2 Factors associated and contributing to maternal near misses near at Juba Teaching Hospital.

Abbreviation: C/S, cesarean section.

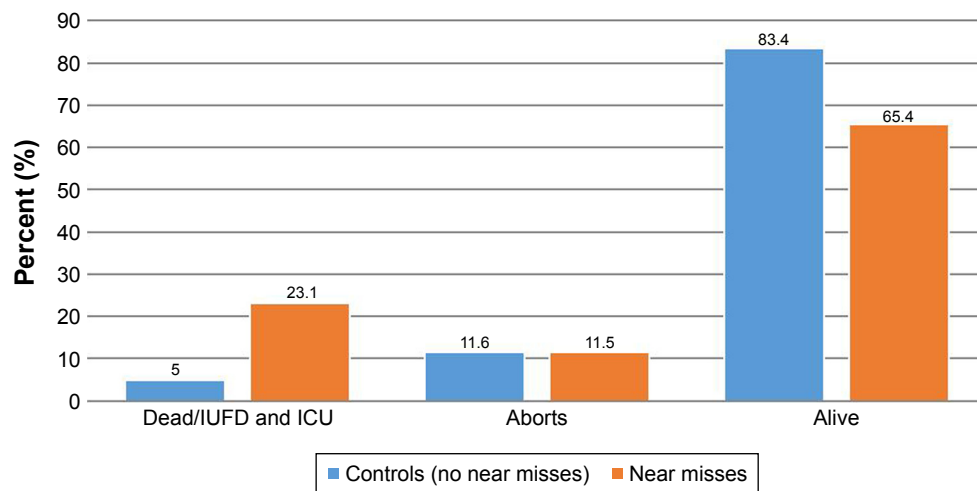


Figure 3 Pregnancy outcomes among women who experienced maternal near misses and controls (no near misses) at Juba Teaching Hospital, August 2016. **Abbreviations:** IUFD, intrauterine fetal death; ICU, intensive-care unit.

or lower income, and age <18 years. In addition, associations between parity, past obstetric complications, current pregnancy complications, and maternal morbidity were independently associated with the occurrence of an NM. A higher adverse pregnancy outcome of 23% (death or admitted to isolation unit) was recorded in women who suffered NM complications compared to not-NM cases ($P=0$). Similar findings have been demonstrated elsewhere.^{27,34,35} It is important to realize that a cesarean section can be the cause of severe morbidity, but can also represent the result of it, as it is often performed because of compromised maternal condition. The WHO recommendation is that a population-based cesarean rate of 5%–15% is optimal. However, at JTH only 4.3% of pregnant women have access to a cesarean section.

In contrast to our findings, the results of the WHO multi-country survey³⁶ showed that older, less educated, and higher-parity mothers with cesarean deliveries were more likely to have SMOs. These findings may be related to the very low rate of female literacy in South Sudan, which may show the true effect of education. Perinatal outcome was dismal in SMO cases, with a perinatal mortality rate 15 times higher and a proportionate increase in preterm labor and neonatal ICU admissions.

This study tried to assess quality in care at the national referral hospital in South Sudan for the first time. As the primary national tertiary health care center, JTH receives many complicated cases. Therefore, the findings can be useful to the rest of South Sudan. There are some limitations to our study that can be ameliorated by continuous surveillance and establishing auditing systems to improve quality of care.

Recommendations posited based on the findings

To policy makers:

- There is a high frequency of maternal morbidity and mortality at JTH. Therefore, maternal health policy needs to be concerned not only with averting the loss of life but also with preventing MNM events at all care levels, including the primary level.
- Policies for the notification of cases of severe maternal morbidity should be in place in all health care units, with a “no shame, no blame” approach.
- Contributing factors are shortage of resources, poor-quality primary health care, and the three delays. Further, factors related to maternal mortality are social, as well as medical, and thus multifaceted strategies are needed to address all these areas if maternal mortality is to be reduced. Distrust and a lack of personal empowerment are integral in modeling health care-seeking behavior. Specific barriers related to cost and distance with strategies that reduce social marginalization need to be addressed. Such strategies may include women-empowerment projects including girls’ education and participation in the economy.

To health care institutes:

- Quality auditing and organizational change need to be implemented that address delays in intervention, especially in emergency cesarean sections, referral barriers, and manpower problems, in the health system. Fully functional ICUs (structure, supplies, and well-trained providers) need to be available in territorial care units.

- Magnesium sulfate, improved blood transfusion, and essential obstetric services need to be consistently available throughout the country.
- Performance audits of MNMs in particular and essential obstetric care in general should be encouraged at county, state, and teaching-hospital levels, in order to improve the quality of obstetric care.
- All maternity units ought to collect and submit complete data on severe maternal morbidity to national audits.
- Standard comprehensive essential obstetric care in comprehensive emergency obstetric and neonatal care facilities (teaching, state, and county hospitals) and basic emergency obstetric and newborn-care facilities should be in place, accessible, and fully functional. Skilled manpower needs to be provided for these facilities, with regular and progressive assessment.
- All maternity units should ensure access to the national/international guidelines on the management of obstetric emergencies.
- Fast emergency obstetric responses need to be implemented, such as frequent multidisciplinary training in skills and drill programs (including maternal collapse). These should be prioritized in all maternity units for all professionals at all health care-institute levels.
- Strengthen the referral system at all levels by arranging maternity homes for identified complicated maternity cases.
- Women need individual birth preparedness and a complication-readiness plan. This should include community birth preparedness and complication-readiness plans, which can be integrated with the Boma Health Initiative.
- The referral system needs to be strengthened.
- Health institutes in South Sudan need to have a department of quality assurance, which would make periodic quality appraisals and perform continuous clinical audits of staff. Standard-based management and recognition need to be in place in hospitals.
- Ensure a continuous supply of consumables and essential drugs. In addition, there should be a workable and efficient system for supply and personnel management.

For researchers

There is a need for research focusing on sociocultural correlates and policy issues of MNMs to validate these findings and improve our knowledge of the extent of the problem. Similar studies should also be extended to state hospitals. Further research is recommended to explore factors leading to the identified higher maternal morbidity rate in South Sudan at large.

Conclusion

The proportion of women requiring comprehensive and basic emergency obstetric care is high. Our estimates of the prevalence of women experiencing severe maternal morbidity (9.41%) and the mortality index (9.2%) are higher than available literature recommendations. The study revealed uterine rupture (sequela of obstructed labor), sepsis, eclampsia, and abortion complications carried a very high risk of death. This suggests poor quality of care. Evidence from this study indicates there exists a gap between practice and WHO-recommended interventions in women experiencing MNMs and mortality.

Notably, laparotomy was performed after 3 hours of hospital stay for three cases of ruptured uterus, and one died before the procedure was performed, suggesting the third delay in managing obstructed labor. The nonexistence of an ICU unit contributed to the higher proportion of women experiencing organ dysfunction or dying due to lack of intensive care. This also entails another third delay. More than two-thirds of women had NM events <12 hours after admission, and the same proportion were admitted bypassing the referral system, attributable to the poor link in the referral system, demonstrating first and second delays (delay in seeking or delay in reaching care). The majority of the causes of maternal mortality and severe morbidities are preventable, even in resource-limited situations.

Ethics approval and consent to participate

The Ethical Review Board, Directorate of Research and Planning at the Ministry of Health, Republic of South Sudan, approved the study (letter dated August 5, 2015). Juba Teaching Hospital administration and the Obstetric Department also signed a consent form and gave a letter of permission. An information sheet was prepared in the local language for each participant. Written consent (signature) was secured from each participant after explaining the procedure and aim of the study. Confidentiality was maintained at each stage.

Acknowledgments

We acknowledge all participants in the study, who gave us their precious time and honest answers. We are grateful to all data collectors and supervisors. The Ministry of Health, Republic of South Sudan, the Directorate of Research and Planning, Juba Teaching Hospital, and Juba College of Nursing and Midwifery are also greatly acknowledged. This research was funded by the Real Medicine Foundation, South Sudan Country Office.

Author contributions

All authors contributed toward data analysis, drafting and critically revising the paper, gave final approval of the version to be published, and agree to be accountable for all aspects of the work.

Disclosure

The authors report no conflicts of interest in this work.

References

- Pattinson R, Say L, Souza JP, Broek NVD, Rooney C. WHO maternal death and near-miss classifications. *Bull World Health Organ.* 2009; 87(10):734.
- Filippi V, Ronsmans C, Gohou V, et al. Maternity wards or emergency obstetric rooms? Incidence of near-miss events in African hospitals. *Acta Obstet Gynecol Scand.* 2005;84(1):11–16. doi:10.1111/j.0001-6349.2005.00636.x
- Say L, Souza JP, Pattinson RC. Maternal near miss—towards a standard tool for monitoring quality of maternal health care. *Best Pract Res Clin Obstet Gynaecol.* 2009;23(3):287–296. doi:10.1016/j.bpobgyn.2009.01.007
- Chhabra P. Maternal near miss: an indicator for maternal health and maternal care. *Indian J Community Med.* 2014;39(3):132–137.
- Pattinson R, Buchmann E, Mantel G, Schoon M, Rees H. Can enquiries into severe acute maternal morbidity act as a surrogate for maternal death enquiries? *BJOG.* 2003;110(10):889–893.
- WHO. *Evaluating the Quality of Care for Severe Pregnancy Complications: The WHO Near-Miss Approach for Maternal Health.* Geneva: World health organization; 2011.
- Hinton L, Locock L, Knight M, Harris F. Partner experiences of “near-miss” events in pregnancy and childbirth in the UK: a qualitative study. *PLoS One.* 2014;9(4):e91735.
- Adisasmita A, Deviany P, Nandiati F, Stanton C, Ronsmans C. Obstetric near-miss and deaths in public and private hospitals in Indonesia. *BMC Pregnancy Childbirth.* 2008;8:10.
- Filippi V, Brugha R, Browne E, et al. Obstetric audit in resource-poor settings: lessons from a multi-country project auditing ‘near miss’ obstetrical emergencies. *Health Policy Plan.* 2004;19(1):57–66.
- Hinton L, Locock L, Knight M. Experiences of the quality of care of women with near-miss maternal morbidities in the UK. *BJOG.* 2014;121(Suppl 4):20–23.
- Souza JP, Cecatti JG, Faundes A, et al. Maternal near miss and maternal death in the World Health Organization’s 2005 global survey on maternal and perinatal health. *Bull World Health Organ.* 2010;88(2):113–119.
- Ali A, Khojali A, Okud A, Adam G, Adam I. Maternal near-miss in a rural hospital in Sudan. *BMC Pregnancy Childbirth.* 2011;11(1):48.
- Government of South Sudan MoH. Basic Package of Health Service and Nutrition service for South Sudan, January 2009. Juba, South Sudan; 2009.
- Government of South Sudan Statistics Agency. Sudan household health survey (Southern Sudan Report). Juba, South Sudan; 2006.
- St Mary’s Hospital. *Report on a Visit to Juba, Southern Sudan by a Team of Health Professionals 3rd-7th March.* Newport, Isle of Wight, UK: St Mary’s Hospital; 2008.
- National Bureau of Statistics (South Sudan). Census Priority Results (June, 2009). Juba, South Sudan; 2015.
- Downie R. A report of the CSIS global health policy center, The state of Public Health in south Sudan; 2012.
- Bucyabahgia J. Nursing and Midwifery in Southern Sudan undersubscribed in high demand environment. *South Sudan Med J.* 2010;3:3.
- Ministry of Health, (NBS) NBoS. The Republic of South Sudan: The Sudan Household Health Survey 2010. Vol II. Juba, South Sudan; 2010:1–146.
- Ministry of Health Republic of South Sudan. Health Sector Development Program 2012–2016. Juba, South Sudan; 2012.
- Ayrton J, Attwood D, Kuron LD. A retrospective analysis of mortality distribution in Juba teaching hospital, Southern Sudan. *South Sudan Med J.* 2009;2(1). Available from: <http://www.southsudanmedicaljournal.com/archive/2009-02/untitled-resource.html>.
- Mantel GD, Buchmann E, Rees H, Pattinson RC. Severe acute maternal morbidity: a pilot study of a definition for a near-miss. *Br J Obstet Gynaecol.* 1998;105(9):985–990.
- Say L, Pattinson RC, Gülmezoglu AM. WHO systematic review of maternal morbidity and mortality: the prevalence of severe acute maternal morbidity (near miss). *Reprod Health.* 2004;1:3.
- Souza JP, Gülmezoglu AM, Carroli G, Lumbiganon P, Qureshi Z. The world health organization multicountry survey on maternal and newborn health: study protocol. *BMC Health Serv Res.* 2011;11:286.
- Weeks A, Lavender T, Nazziwa E, Mirembe F. Personal accounts of ‘near-miss’ maternal mortalities in Kampala, Uganda. *BJOG.* 2005; 112(9):1302–1307.
- World Health Organization (WHO). Evaluating the quality of care for severe pregnancy complications: the WHO near-miss approach for maternal health. In: Research DoRHa, editor. *Avenue Appia 20, CH-1211 Geneva 27.* Switzerland: World Health Organization; 2011.
- Kaye DK, Kakaire O, Osinde MO. Systematic review of the magnitude and case fatality ratio for severe maternal morbidity in sub-Saharan Africa between 1995 and 2010. *BMC Pregnancy Childbirth.* 2011;11(65):1–9.
- Tunçalp O, Hindin M, Souza J, Chou D, Sayb L. The prevalence of maternal near miss: a systematic review. *BJOG.* 2012;119:653–661. doi:10.1111/j.1471-0528.2012.03294.x
- Shrestha NS, Saha R, Karki C. Near miss maternal morbidity and maternal mortality at Kathmandu medical college teaching hospital. *Kathmandu Univ Med J (KUMJ).* 2010;8(30):222–226.
- Almerie Y, Almerie M, Matar H, Shahrour Y, Al Chamat A, Abdulsalam A. Obstetric near-miss and maternal mortality in maternity university hospital, Damascus, Syria: a retrospective study. *BMC Pregnancy Childbirth.* 2010;10(1):65.
- Campbell O, Koblinsky M, Marshall T, et al. Lessons learnt: a decade of measuring the effects of safe motherhood programmes. London: London School of Hygiene and Tropical Medicine; 1997.
- Jabir M, Abdul-Salam I, Suheil DM, et al. Maternal near miss and quality of maternal health care in Baghdad, Iraq. *BMC Pregnancy Childbirth.* 2013;13:11.
- Filippi V, Richard F, Lange I, Ouattara F. Identifying barriers from home to the appropriate hospital through near-miss audits in developing countries. *Best Pract Res Clin Obstet Gynaecol.* 2009;23(3):389–400.
- Bashour H, Abdulsalam A, Jabr A, et al. Maternal mortality in Syria: causes, contributing factors, and preventability. *Trop Med Int Health.* 2009;14(9):1122–1127.
- Jabir M, Abdul-Salam I, Suheil MD, et al. Maternal near miss and quality of maternal health care in Baghdad, Iraq. *BMC Pregnancy Childbirth.* 2013;13:11.
- Souza JP, Cecatti JG, Haddad SM, et al. The WHO maternal near-miss approach and the Maternal Severity Index model (MSI): tools for assessing the management of severe maternal morbidity. *PLoS One.* 2012;7(8):e44129.

Supplementary materials

Informed Consent	Date _____
	Code no. _____
<p>Good day!</p> <p>Your child is being asked to participate in a research study conducted by Fekadu Mazengia Alemu, Dr Martina Fuchs, Dr Mergani Abdala and Dr Taban Martin from JCONAM, RMF and JTH.</p> <p>We are conducting research on “Maternal Near-Miss Audit and Factors Associated With Maternal Near-Miss in Juba, Republic Of South Sudan” in collaboration with the Real Medicine Foundation, Juba Teaching Hospital, and Juba College of Nursing and Midwifery. The objective of the study is to investigate the frequency of near-miss events, to calculate the mortality index for each event and to compare the sociodemographic and obstetrical correlates of the near-miss cases with maternal deaths. This is helpful to prevent maternal mortality, to improve the quality of obstetric care, and achieve SDG 3 in South Sudan. This study has been approved by the ethical review board of the Minister of Health, Republic of South Sudan, for preserving the ethical and scientific standards for research done on human subjects. You have been selected to participate in this study randomly.</p> <p>This questionnaire asks about near-miss events, including cause of maternal deaths and near-misses. The name of the client or any other identifier will not be written on this questionnaire, and will never be used in connection with any of the information we collect. Your participation is voluntary.</p> <p>You can stop the data collection process at any time you want to stop or whenever you feel uncomfortable. However, your accurate and honest information is highly important to achieve the aim of the study. Therefore, we are requesting you to provide information and have access to your medical information to collect data on the care you get. There are 3 groups of questions, and it takes approximately “20–25 minutes” to collect the data.</p> <p>Are you willing participate?</p> <p>Yes _____</p> <p>Signature _____</p> <p>No _____</p> <p>Thank you for agreeing to participate in this survey/research project!!!</p> <p>Name of data collector _____ Signature _____</p> <p>Date _____</p>	

Figure S1 Adult informed consent form.

Abbreviations: JCONAM, Juba College of Nursing and Midwifery; JTH, Juba Teaching Hospital; RMF, Real Medicine Foundation; SDG, Sustainable development goals.

Identification of investigators and purpose of study

Your child is being asked to participate in a research study conducted by Fekadu Mazengia Alemu, Dr Martina Fuchs, Dr Mergani Abdala and Dr Taban Marthin from JCONAM, RMF and JTH.

We are conducting research on “**Maternal Near-Miss Audit and Factors Associated With Maternal Near-Miss in Juba, Republic Of South Sudan**” in collaboration with the Real Medicine Foundation, Juba Teaching Hospital, and Juba College of Nursing and Midwifery. The objective of the study is to investigate the frequency of near-miss events, to calculate the mortality index for each event, and to compare the sociodemographic and obstetrical correlates of the near-miss cases with maternal deaths. This is helpful to prevent maternal mortality, to improve the quality of obstetric care, and achieve SDG 3 in South Sudan. This study has been approved by the ethical review board of the Minister of Health, Republic of South Sudan, for preserving the ethical and scientific standards for research done on human subjects. You have been selected to participate in this study randomly.

This questionnaire asks about near-miss events, including cause of maternal deaths and near-misses.

Research procedures

Should you decide to allow your child to participate in this research study, you will be asked to sign this consent form once all your questions have been answered to your satisfaction. This study consists of a checklist and interview that will be administered to individual participants in the hospitals and health centers. You will be asked to provide answers to a series of questions related to health and related issues of your child after birth.

Time required

Participation in this study will require 20 minutes of your time.

Risks

The investigator does not perceive more than minimal risks from your child’s involvement in this study (that is, no risks beyond the risks associated with everyday life).

Benefits

In the long run this study will help the concerned organization and policy makers to have a policy consideration and direction and formulation of strategy and design maternal health intervention programs and policies specially related to pregnancy delivery and neonatal care. Moreover, your child will be linked to the regular service for any conditions diagnosed at any time during the process of this study.

Confidentiality

Your child will be identified in the research records by a code name or number. The researchers retain the right to use and publish nonidentifiable data. When the results of this research are published or discussed in conferences, no information will be included that would reveal your child’s identity. All data will be stored in a secure location accessible only to the researchers. Upon completion of the study, all information that matches up individual respondents with their answers will be destroyed.

There is one exception to confidentiality we need to make you aware of. In certain research studies, it is our ethical responsibility to report situations of child abuse, child neglect, or any life-threatening situation to appropriate authorities. However, we are not seeking this type of information in our study nor will you be asked questions about these issues.

Participation and withdrawal

Your child’s participation is entirely voluntary. You on your child’s behalf are free to choose not to participate. Should you choose to participate, you can withdraw at any time without consequences of any kind.

Questions about the study

If you have questions or concerns during the time of your child’s participation in this study, or after its completion or you would like to receive a copy of the final aggregate results of this study, please contact: Dr Richard Laku, Director General Planning, Budgeting and Policy, MOH; Tel +211956433666.

If you want more information and to check about this project you can contact the Principal Investigator: Fekadu Mazengia; Tel +211956235550.

Giving of consent

I have read this consent form and I understand what is being requested of my child as a participant in this study. I freely consent for my child to participate. I have been given satisfactory answers to my questions. The investigator provided me with a copy of this form. I certify that I am at least 18 years of age.

I give consent for my child to participate during their interview.

Initial of parent/guardian

Parent/guardian (signed)

Date

Name of researcher/data collector (signed)

Date

Figure S2 Parent/guardian informed consent form.

International Journal of Women's Health**Dovepress****Publish your work in this journal**

The International Journal of Women's Health is an international, peer-reviewed open-access journal publishing original research, reports, editorials, reviews and commentaries on all aspects of women's healthcare including gynecology, obstetrics, and breast cancer. The manuscript management system is completely online and includes

a very quick and fair peer-review system, which is all easy to use. Visit <http://www.dovepress.com/testimonials.php> to read real quotes from published authors.

Submit your manuscript here: <http://www.dovepress.com/international-journal-of-womens-health-journal>