

# *KIF5B-RET* fusion gene and its correlation with clinicopathological and prognostic features in lung cancer: a meta-analysis

This article was published in the following Dove Medical Press journal:  
*OncoTargets and Therapy*

Xiao-Feng Cong  
Lei Yang  
Chen Chen  
Ziling Liu

Department of Oncology, The  
First Hospital of Jilin University,  
Changchun, Jilin 130021, People's  
Republic of China

**Background:** The *KIF5B-RET* fusion gene is a novel oncogene that has been observed in a subset of lung cancers in recent years. However, the results of related epidemiological studies remain unclear. Thus, a meta-analysis was conducted to evaluate the correlation of *KIF5B-RET* expression based on RT-PCR detection with clinicopathological features and prognosis of lung cancer.

**Methods:** The PubMed, Google Scholar, Wiley Online, SpringerLink and Chinese National Knowledge Infrastructure databases were searched to identify the eligible studies. The association of the occurrence of *KIF5B-RET* fusion gene in lung cancer with age, gender, smoking status, histology type, differentiation and TNM stage was analyzed. HR, overall survival (OS) and progression-free survival (PFS) were used to describe the prognosis of patients with lung cancer. The OR and 95% CI were calculated to assess the correlations. Random- and fixed-effects models were used to analyze the data.

**Results:** A total of 13 studies, which included 8,859 lung cancer patients, were included in the study based on the inclusion criteria. A total of 121 patients with positive *KIF5B-RET* fusion gene status were detected, with a positive expression rate of 1.36%. *KIF5B-RET* fusion gene status was identified at significantly higher frequencies in female (OR=0.67, 95% CI=0.48–0.94) than male patients, and the same trend was found in young (<60 years) patients (OR=0.08, 95% CI=0.01–0.45) compared with old patients ( $\geq 60$  years). No differences were found in the TNM stage, histology, differentiation and smoking. Based on the prognosis, no difference was found between the status of the positive and negative *KIF5B-RET* fusion genes in OS and PFS of patients.

**Conclusion:** The *KIF5B-RET* fusion gene occurred predominantly in young female patients with lung cancer. However, the relationship between the expression of the fusion gene and the prognosis of lung patients remains unclear.

**Keywords:** pathological parameters, *KIF5B-RET*, lung cancer, fusion gene

## Introduction

Research has shown that lung cancer is one of the most fatal tumors among the various malignant tumors, resulting in more than one million deaths every year worldwide.<sup>1,2</sup> In China, lung cancer-related mortality ranks first among malignant tumors.<sup>3</sup> The vast majority of lung cancer patients have deteriorated at the time of initial diagnosis, making it difficult for them to undergo surgery. In recent years, chemotherapy has remained the main treatment for lung cancer. Despite continuous improvements in treatment technology, the prognosis of lung cancer remains poor, and the 5-year survival rate is only approximately 15%.<sup>4,5</sup>

Correspondence: Ziling Liu  
Department of Oncology, The First  
Hospital of Jilin University, Changchun,  
Jilin 130021, People's Republic of China  
Email drzilingliu@163.com

Smoking is a major cause of lung cancer. More than 161,000 lung cancer deaths are projected to occur in the USA in 2008. Of these, an estimated 10%–15% will be caused by factors other than active smoking.<sup>6</sup> The majority of lung cancer patients without a history of smoking develop cancer because of cancer-related driver genes.<sup>7</sup> In the past decade, with the development of tumor molecular biology, a series of driver genes related to non-small-cell lung cancer (NSCLC) has been discovered, and these genes include *EGFR*, *KRAS* and *EML4-ALK*, which are often referred to as lung cancer treatment targets.<sup>8</sup> However, in more than 40% of NSCLC patients, the driver genes are not determined.

Since 2012, approximately 4.3%–8% of patients with lung adenocarcinoma have presented with *RET* gene rearrangement, whereas the *RET* gene encodes RET receptor tyrosine kinase.<sup>9</sup> *RET* fusion genes, including kinesin family member 5B (*KIF5B*), coiled-coil domain-containing protein 6 (*CDC6*), nuclear receptor coactivator 4 (*NCOA4*) and tripartite motif containing 33 (*TRIM33*), have been discovered, and *KIF5B-RET* is one of the most important genotypes.<sup>10</sup> The *KIF5B-RET* fusion gene was first discovered in the liver metastases of an NSCLC patient in 2011, and has been considered to be another important tyrosine kinase inhibitor (TKI) target for NSCLC.<sup>11</sup> The *RET* fusion gene can induce the occurrence of thyroid cancer, which is controlled by tumor progression via the RET inhibitor, but it has been rarely observed in lung cancer.<sup>12,13</sup> *KIF5B-RET* is not expressed in normal lung tissue but is highly expressed in lung cancer tissues.<sup>14</sup> Patients with the *KIF5B-RET* genotype have unique clinical features, suggesting that the target may be a more specific molecular marker in NSCLC. The *KIF5B-RET* fusion gene is a chimeric tyrosine kinase, consisting of 638 N-terminal amino acid residues of the *KIF5B* protein and 402 C-terminal amino acid residues of the *RET* protein, including the *RET* gene coding.<sup>15,16</sup> A structural region is present, having tyrosine protein kinase activity, a supercoiled domain and a motor domain encoded by the *KIF5B* gene.<sup>17</sup> The supercoiled domain of the *KIF5B-RET* fusion protein can undergo homodimerization, activate the intracellular tyrosine kinase protein and open the oncogenic signaling pathway, and ultimately regulates cell growth and differentiation mainly through the Ras–Raf–MAPK and PI3K–Akt pathway.<sup>17</sup> In summary, the related targeted drugs, diagnostic methods, clinical trials and transformational studies of *KIF5B-RET/EML4-ALK* fusion genes need further study.<sup>18</sup>

In this study, a meta-analysis was employed to study the expression of *KIF5B-RET* in lung cancer and related

pathological data of lung cancer patients, including age, sex, TNM stage, smoking status, histological classification and differentiation. The expression of *RET* in patients was also studied. The prognosis of lung cancer patients was analyzed to predict the expression of the *KIF5B-RET* fusion gene for the treatment of lung cancer.

## Methods

### Data sources and search strategy

This meta-analysis was performed according to the PRISMA recommendations. The articles were retrieved by PubMed, Google Scholar, Wiley Online, SpringerLink and China National Knowledge Infrastructure and were collected from January 2012 to August 2018. The search keywords adoption strategy included (“Lung Cancer” or “Lung Neoplasms” or “Pulmonary Neoplasm”) and (“rearranged during transfection” or “*RET*”) and (“kinesin family member 5B” or “*KIF5B*” or “*KIF5B-RET*”) and/or “prognosis”. The search was restricted to RT-PCR detection studies, which were published in English and other languages. Detailed retrieval strategies are presented in the Supplementary material.

### Inclusion and exclusion criteria

The inclusion criteria for the article included the following: 1) patients with pathology confirmed as lung cancer; 2) with available patient epidemiological and clinicopathological data or patient prognosis; 3) with available data forms for analysis and 4) articles published in English or Chinese. The exclusion criteria included the following: 1) patients with pathology confirmed as benign lung tumors; 2) no relevant pathology and patient prognosis data; 3) article data could not be used for statistical analysis; 4) non-human lung cancer tissues and 5) review studies and articles published with the same patient data. In cases of repeated publication of patient data, we used the latest article version for statistical analysis.

### Data extraction

The data extracted from the article were collected independently by two investigators, and disputes were resolved through negotiation. Table 1 summarizes the basic data of each article, including the author’s first name, year of publication, area of patient data collection, detection method of related genes and positive expression rate of gene fusion.

### Statistical analyses

Stata 12.0 (StataCorp., College Station, TX, USA) was used to analyze the data related to lung cancer patients.

Table 1 Basic information on the patients with lung cancer

Study no	First author	Year	Country	Method	Cases	Age (years)	RET fusion positive				OS (months)			
							KIF5B	Others	Total	Fusion-positive patients		Fusion-negative patients		
										Median	Range	Median	Range	
1	Takeuchi <sup>28</sup> et al	2012	Japan	RT-PCR	1,529	NA	12	2	14	NA	NA	NA	NA	
2	Yokota <sup>29</sup> et al	2012	Japan	RT-PCR	371	NA	3	0	3	51.7	0.6–60.7	36.2	0.5–146.6	
3	Suehara <sup>18</sup> et al	2012	USA	RT-PCR	69	67.8	1	0	1	NA	NA	NA	NA	
4	Wang <sup>24</sup> et al	2012	China	RT-PCR	936	59.7	9	4	13	NA	NA	NA	NA	
5	Kohno <sup>11</sup> et al	2012	Japan, USA	RT-PCR	433	62.3	7	0	7	NA	NA	NA	NA	
6	Ca <sup>7</sup> et al	2013	China	RT-PCR	392	60	6	0	6	21	12.01–30.02	52.6	42.39–62.88	
7	Yoo <sup>30</sup> et al	2013	Korean	RT-PCR	156	63.8	2	1	3	NA	NA	NA	NA	
8	Tsuta <sup>31</sup> et al	2014	Japan	RT-PCR	1,874	63.1	19	3	22	NA	NA	NA	NA	
9	Pan <sup>32</sup> et al	2014	China	RT-PCR	1,139	59.4	15	0	15	NA	NA	NA	NA	
10	Kim <sup>21</sup> et al	2015	Korea	RT-PCR	533	67.2	21	30	51	NA	NA	NA	NA	
11	Tsai <sup>33</sup> et al	2015	Taiwan	RT-PCR	722	66	11	6	17	22.4	8.8–36.0	12	9.0–15.0	
12	Song <sup>34</sup> et al	2016	China	RT-PCR	615	54	9	2	11	58.1	NA	52	NA	
13	Yu <sup>35</sup> et al	2018	China	RT-PCR	90	60	6	0	6	17.5	14.0–21.1	15.8	13.6–18.0	

Abbreviations: OS, overall survival; NA, not available.

Engauge Digitizer software was used to organize the survival curves of patient overall survival (OS) and progression-free survival (PFS). The summarized indicators included the patient's *KIF5B-RET* expression rate, patient-related clinicopathological parameters and patient prognosis. The OR and corresponding 95% CI were used to describe the patient's clinicopathological parameters. HRs, OS and PFS were used to analyze the prognosis of patients. The selection of the effect model of the data was based on the specific value of  $I^2$ . When  $I^2 \leq 50\%$ , the data have moderate or low heterogeneity, and the fixed-effects model is used for simulation. When  $I^2 > 50\%$ , the data have high heterogeneity, and the random-effects model is used for simulation. The publication bias for patient prognosis was simulated using a funnel plot and Egger's test.

## Results

### Study selection and characteristics of included studies

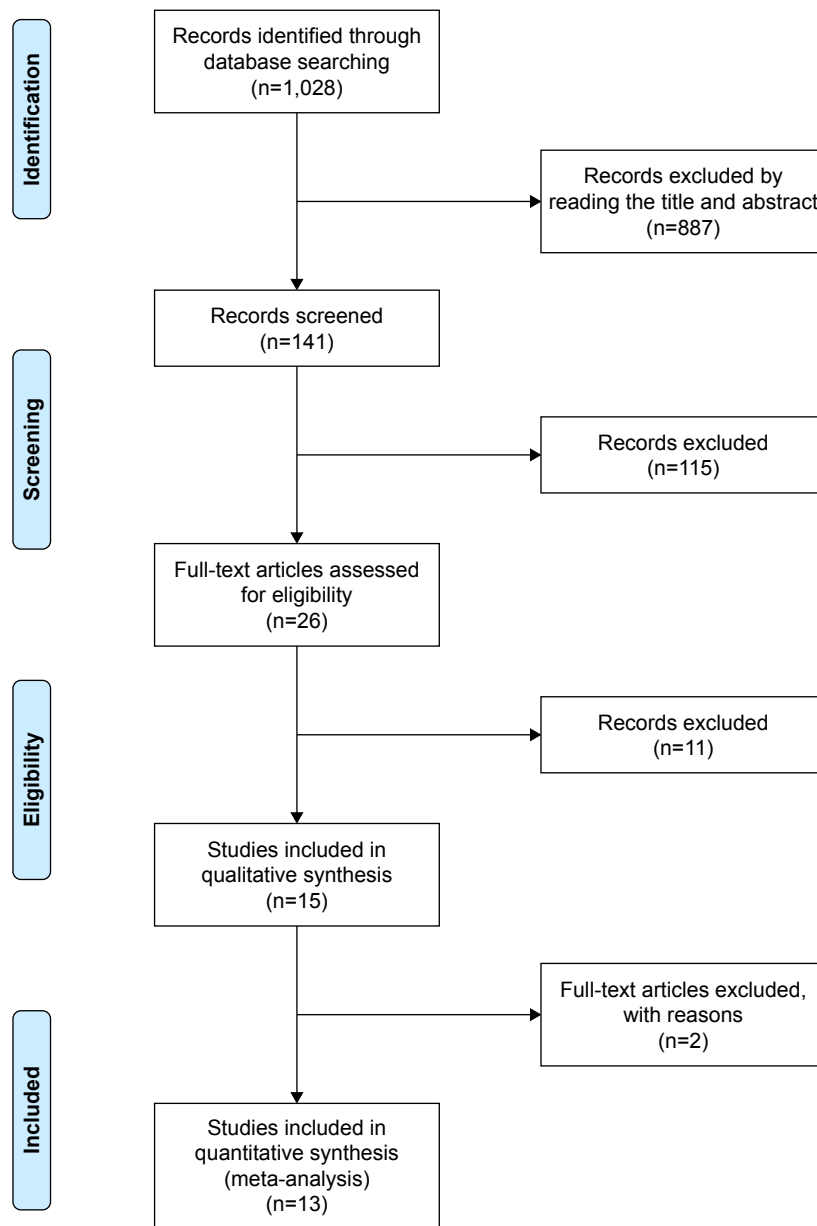
A total of 1,028 articles were retrieved from relevant databases. Through the preliminary reading and analysis of the title and abstract, 887 articles were excluded because of a lack of significant relevance to the paper. The full text of the remaining 141 articles was downloaded and viewed, excluding the abstract, and the *KIF5B-RET*-related factors in animal lung cancer models and cell experiments were detected. Further analysis of the articles excluded 16 articles that could not be extracted and published using the same patient data. Finally, 13 related articles were included. The search results are presented in Figure 1.

A total of 8,859 patients were included in the 13 articles, including 169 patients with *RET*-positive disease, with a positive expression rate of 1.91%. A total of 121 patients had the *KIF5B-RET* fusion gene, with a positive expression rate of 1.36%.

### Clinicopathological parameters

The *KIF5B-RET* fusion gene was identified at significantly lower frequencies in male (OR=0.67, 95% CI=0.48–0.94;  $Z=2.30$ ,  $p=0.022$ ) than in female patients, and the same trend was present in older ( $\geq 60$  years) patients (OR=0.08, 95% CI=0.01–0.45;  $Z=2.87$ ,  $p=0.004$ ) compared with younger patients ( $< 60$  years) (all  $p < 0.05$ ) (Figures 2 and 3).

No differences were found in the TNM stage (I+II vs III+IV;  $Z=1.63$ ,  $p=0.104$ ;  $I^2=0.0\%$ ,  $p=0.998$ ), histology (adenocarcinoma of the lung vs non-adenocarcinoma;  $Z=1.41$ ,  $p=0.158$ ;  $I^2=57.7\%$ ,  $p=0.021$ ), differentiation



**Figure 1** Flow diagram of the study selection procedure and specific reasons for exclusion in the meta-analysis.

(High vs Poor + Mod;  $Z=1.00, p=0.316; I^2=89.7%, p=0.002$ ) and smoking (Yes vs No;  $Z=1.88, p=0.061; I^2=72.1%, p=0.000$ ). The details are shown in Figures 2 and 3.

### Prognosis

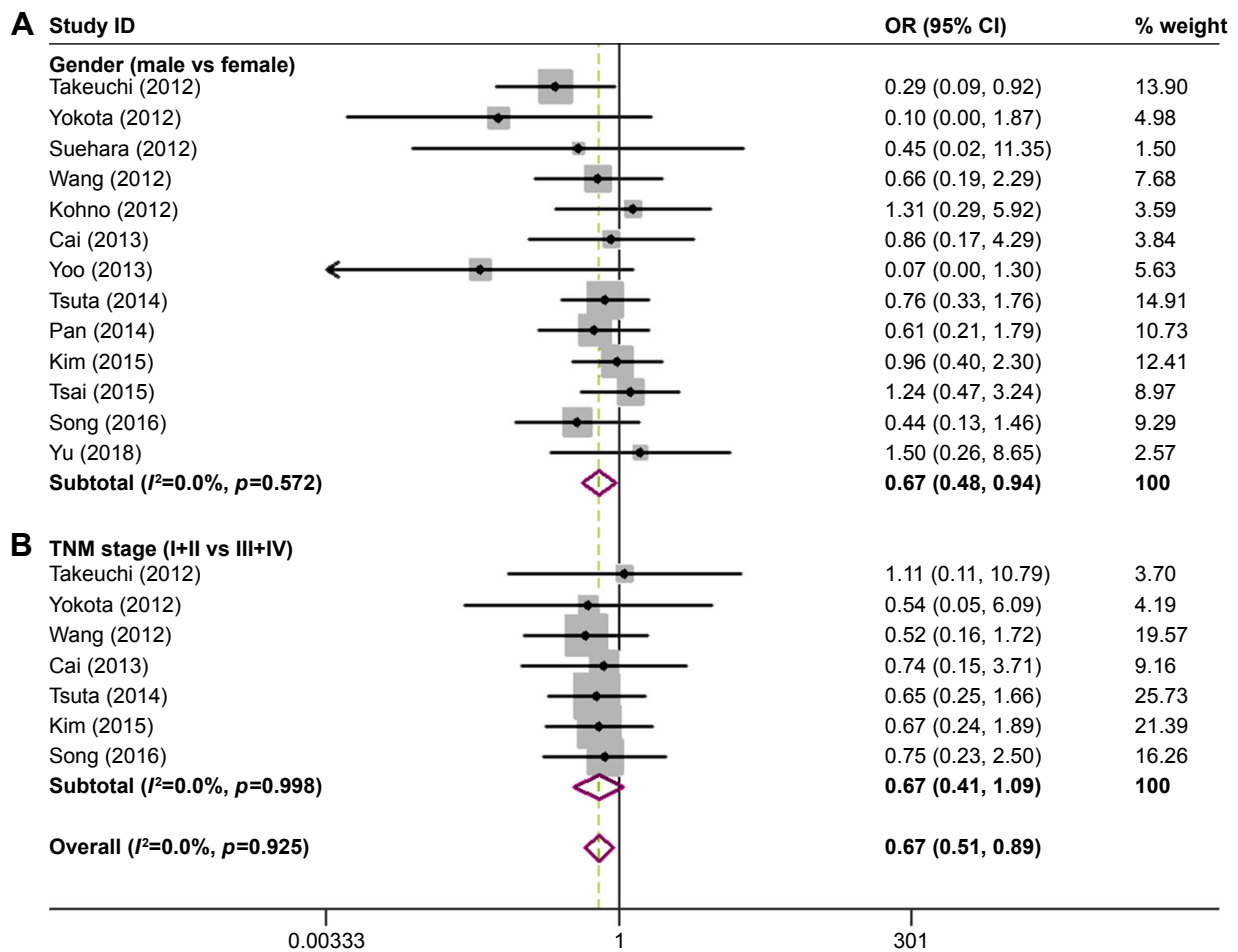
We analyzed six articles reporting OS and two articles reporting PFS for the *KIF5B-RET* fusion gene. The results showed no difference in OS and PFS between the positive and negative *RET* fusion genes (OS:  $Z=1.6, p=0.109; I^2=67.3%, p=0.009$ ; PFS:  $Z=1.75, p=0.080; I^2=0.0%, p=0.723$ ) (Figure 4).

### Publication bias

Egger’s test showed that no publication bias was observed in the comparison between the positive and negative *RET* fusion gene. Funnel plots are presented in Figures 5 and 6. A graph of risk of bias (Figure 7) and a summary of risk of bias (Figure 8) were generated to describe the risk of bias of each study.

### Discussion

In recent years, genetic testing has been used to divide the same pathological type of lung cancer into various “molecular

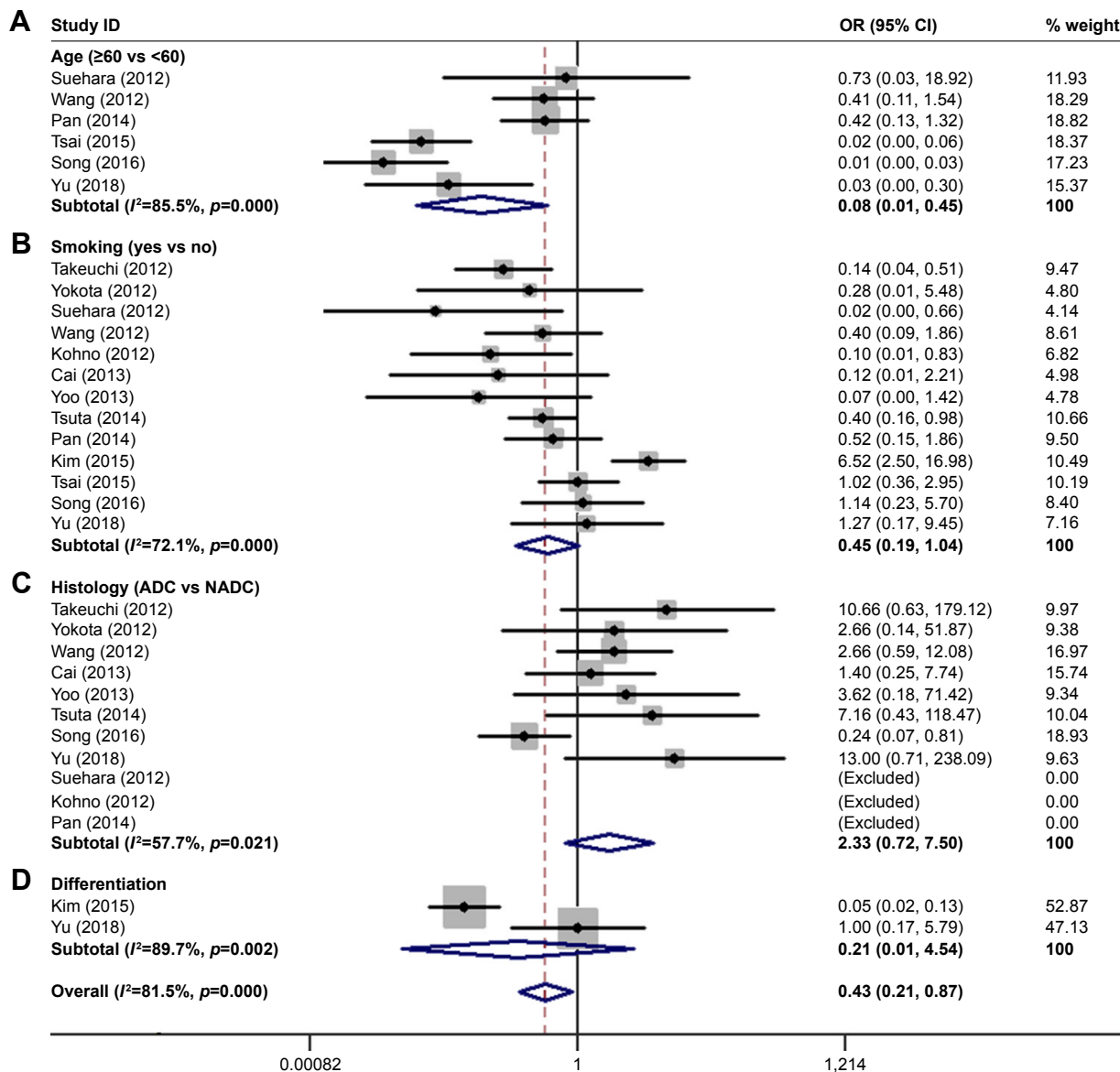


**Figure 2** Meta-analysis of the association between *RET* fusion genes and clinicopathological features. (A) Gender: female vs male patients ( $Z=2.30$ ,  $p=0.022$ ); (B) TNM stage: I+II vs III+IV ( $Z=1.63$ ,  $p=0.106$ ).

subtypes”, and individualized treatments can be achieved by selecting molecularly targeted drugs.<sup>19</sup> The *KIF5B-RET* fusion gene is an independent and key molecular target for the development and progression of lung cancer, mainly in patients with *EGFR*, *KRAS* wild-type, non-smoker and young male lung adenocarcinoma.<sup>20–22</sup> Several multi-target molecular targeted drugs are available internationally that may provide individualized treatment for patients with *RET* fusion genes.<sup>23</sup> The emergence of the molecular subtype of *KIF5B-RET* fusion genotype lung cancer has further improved the pattern of NSCLC molecular typing diagnosis and treatment.

A total of 13 articles meeting the inclusion criteria were included in this meta-analysis, including 8,859 patients with lung cancer. Among them, 169 patients were *RET* positive, with a positive expression rate of 1.91%, whereas 121 patients had the *KIF5B-RET* fusion gene, with a positive expression rate of 1.36%. Analysis of clinicopathological

parameters showed that the *KIF5B-RET* fusion gene was differentially expressed according to age and sex ( $p<0.05$ ). In the TNM stage, histology, differentiation and smoking, *RET* was expressed between the higher frequencies and lower frequencies groups, and no difference was observed in the expression (all  $p$ -values  $>0.05$ ). In particular, smoking was significantly associated with lung cancer. The *KIF5B-RET* fusion gene was originally found in the liver metastases of a lung cancer patient who did not have a history of smoking. Increasing evidence has indicated that the *KIF5B-RET* fusion gene is present in lung cancer patients who do not smoke or only smoke lightly. Kohno et al found that the proportion of non-smokers in patients with *KIF5B-RET* fusion gene-positive lung adenocarcinoma was 85.7% (6/7).<sup>11</sup> Wang et al examined the status of the *RET* fusion gene in 936 patients with NSCLC who underwent lung resection in China.<sup>24</sup> The proportion of non-smokers in lung adenocarcinoma patients with positive *RET* fusion gene was 81.8% (9/11). In *KIF5B*, the proportion



**Figure 3** Meta-analysis of the association between *RET* fusion genes and clinicopathological features. (A) Age: ≥60 vs <60 years ( $Z=2.87$ ,  $p=0.004$ ); (B) smoking: yes vs no ( $Z=1.88$ ,  $p=0.061$ ); (C) histology: adenocarcinoma of the lung (ADC) vs non-adenocarcinoma (NADC) ( $Z=1.41$ ,  $p=0.158$ ); (D) differentiation: high vs poor + moderate ( $Z=1.00$ ,  $p=0.316$ ).

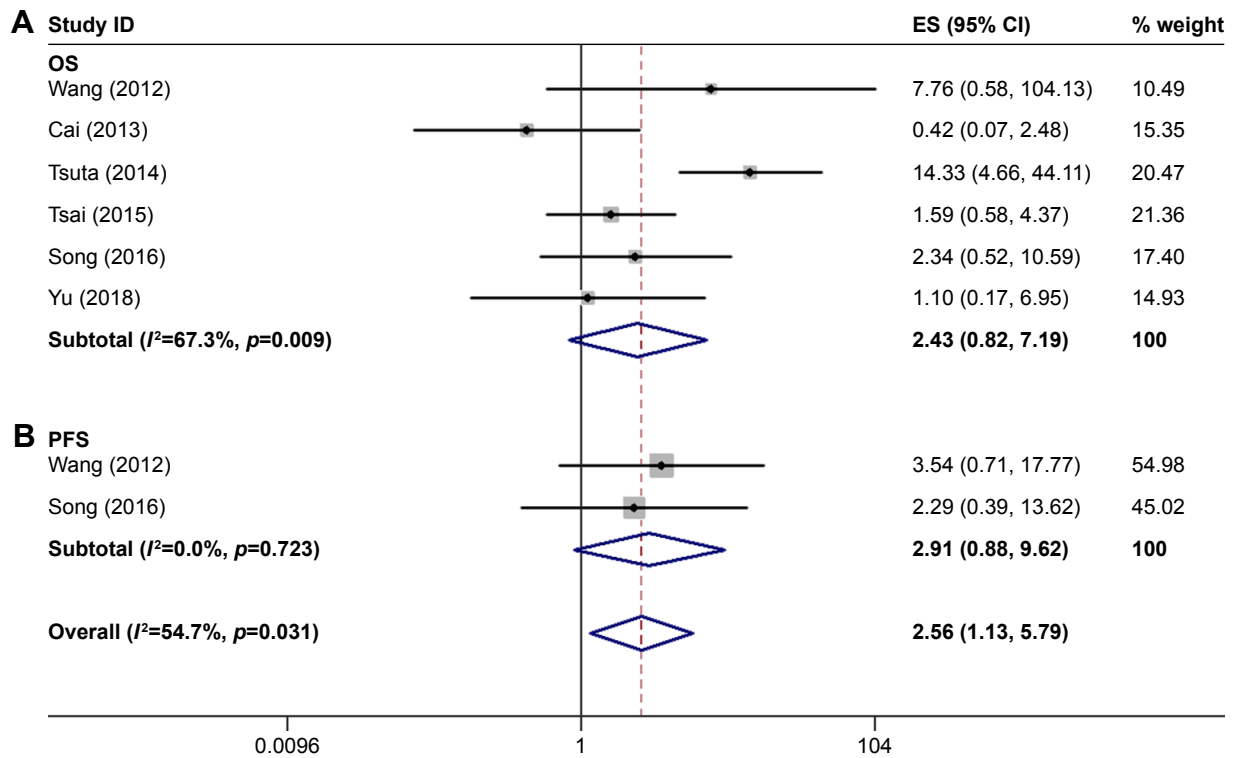
**Note:** Weights are from random-effects analysis.

of non-smokers in patients with positive *RET* fusion gene lung adenocarcinoma was 63.6% (7/11). These findings suggest that the *KIF5B-RET* fusion gene is more common in patients who do not smoke or only smoke lightly. Furthermore, the above data objectively support the research results of this paper.

Specific targeted drugs against the *KIF5B-RET* fusion gene have not been developed, but some TKIs that inhibit the activity of RET proteins have been widely clinically tested in thyroid cancer, and the US Food and Drug Administration has approved vandetanib for the treatment of hereditary thyroid gland medullary carcinoma. Kohno et al<sup>11</sup> showed

that vandetanib can inhibit the growth of NIH3T3 lung cancer cells containing the *KIF5B-RET* fusion gene. Lipson et al found that Ba/F3 cells transfected with the *KIF5B-RET* fusion gene showed high expression and phosphorylation activation of RET, whereas in vitro studies found that multi-targeted drugs, sunitinib, sorafenib and vandetanib, are effective in inhibiting the proliferation of this cell, whereas gefitinib did not have this effect.<sup>25</sup>

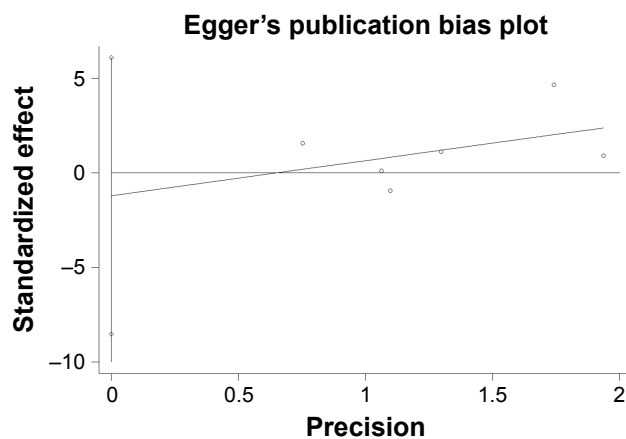
Lung cancer driver genes have been a hotspot in NSCLC-targeted therapy research. TKI treatment targeting the *EGFR* mutation and *EML4-ALK* fusion gene has introduced new



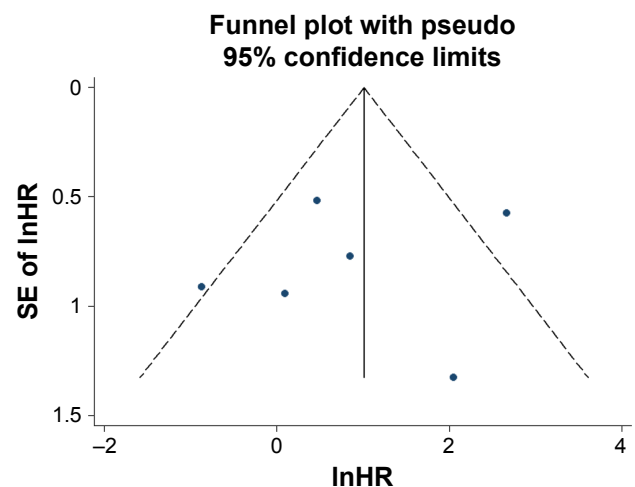
**Figure 4** Meta-analysis of the association between *RET* fusion genes and prognosis. (A) OS ( $Z=1.6$ ,  $p=0.109$ ); (B) PFS ( $Z=1.75$ ,  $p=0.080$ ).  
**Note:** Weights are from random-effects analysis.  
**Abbreviations:** ES, effect size; OS, overall survival; PFS, progression-free survival.

ideas for NSCLC treatment.<sup>26</sup> However, more than 40% of NSCLC-driven genes remain unclear.<sup>27</sup> The discovery of the *KIF5B-RET* fusion gene has injected new vitality into the field of lung cancer research. However, to establish a diagnosis and treatment model that is truly similar to the current *EGFR* mutation, the *ALK* fusion gene requires a large amount of preclinical research and a high level of clinical evidence.

The results of this study showed that the expression of the *KIF5B-RET* fusion gene does not affect the patient’s OS and PFS. This finding may be partly due to the low expression rate of the *KIF5B-RET* fusion gene in lung cancer. Hence, more research data are needed to supplement this result. In the near future, we predict that researchers worldwide will



**Figure 5** Egger’s publication bias plot of overall survival.



**Figure 6** Funnel plot of overall survival.  
**Abbreviation:** lnHR, natural log of the hazard ratio.

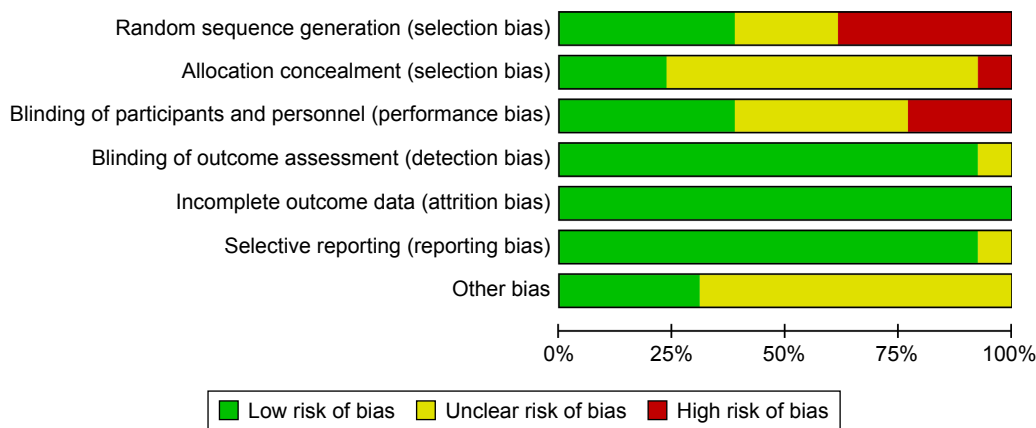


Figure 7 Graph of risk of bias.

	Random sequence generation (selection bias)	Allocation concealment (selection bias)	Blinding of participants and personnel (performance bias)	Blinding of outcome assessment (detection bias)	Incomplete outcome data (attrition bias)	Selective reporting (reporting bias)	Other bias
Takeuchi	?	?	-	+	+	+	?
Kim	+	?	-	+	+	+	+
Tsai	-	?	+	+	+	+	+
Song	-	+	?	+	+	+	?
Yu	-	-	?	+	+	+	?
Yokota	-	?	+	?	+	+	?
Suehara	?	?	?	+	+	+	?
Wang	+	+	+	+	+	+	?
Kohno	-	+	-	+	+	?	?
Cai	+	?	+	+	+	+	+
Yoo	+	?	?	+	+	+	?
Tsuta	?	?	+	+	+	+	?
Pan	+	?	?	+	+	+	+

Figure 8 Summary of risk of bias.

continue to actively explore the diagnostic techniques and undertake clinical trials on *KIF5B-RET* fusion genes.

### Disclosure

The authors report no conflicts of interest in this work.

### References

1. Dela Cruz CS, Tanoue LT, Matthay RA. Lung cancer: epidemiology, etiology, and prevention. *Clin Chest Med.* 2011;32(4):605–644. doi:10.1016/j.ccm.2011.09.001
2. Miller RA, Cagle PT. Lung Cancer Epidemiology and Demographics. In: Cagle PT, Allen TC, Beasley MB, Chirieac LR, Dacic S, Borczuk AC, Kerr KM, Sholl LM, Portier B, Bernicker EH, editors. *Precision Molecular Pathology of Lung Cancer.* Houston: Molecular Pathology Library; 2018:15–17.
3. Chen W, Zheng R, Zeng H, Zhang S. Epidemiology of lung cancer in China. *Thoracic Cancer.* 2015;6(2):209–215. doi:10.1111/1759-7714.12169
4. Shi L, Wang Z, Yu T, Xia L. Chronic disease and its therapeutic drugs may effect on the postoperative 5-year survival rate of lung cancer patients. *J Chin Pharm Sci.* 2017;26(2). doi:10.5246/jcps.2017.02.014
5. Noori FF, Karippot A, Kabak B, et al. 5-year survival rate of lung cancer patients in an inner city hospital. *Chest.* 2009;136(4):21. doi:10.1378/chest.136.4\_MeetingAbstracts.21S-c
6. Jonathan MS, Erika AT, Paolo B, et al. Lung cancer in never smokers: clinical epidemiology and environmental risk factors. *Clin Cancer Res.* 2009;15(18):5626–5645. doi:10.1158/1078-0432.CCR-09-0376
7. Aisner DL, Sholl LM, Berry L, et al; LCMC2 investigators. The impact of smoking and TP53 mutations in lung adenocarcinoma patients with targetable mutations – the Lung Cancer Mutation Consortium (LCMC2). *Clin Cancer Res.* 2017;24(5):1038–1047.
8. Wang J, Suqin YI, Wang H, Zhou J, Guo F, Lab C. The analysis of c-Met, EGFR, K-Ras, and EML4-ALK in non-small cell lung cancer. *Chin Clin Oncol.* 2015;20(10):902–908.
9. Cai W, Su C, Li X, et al. KIF5B-RET fusions in Chinese patients with non-small cell lung cancer. *Cancer.* 2013;119(8):1486–1494. doi:10.1002/cncr.27940
10. Engelman JA, Jänne PA. Mechanisms of acquired resistance to epidermal growth factor receptor tyrosine kinase inhibitors in non-small cell lung cancer. *Clin Cancer Res.* 2008;14(10):2895–2899. doi:10.1158/1078-0432.CCR-07-2248
11. Kohno T, Ichikawa H, Totoki Y, et al. KIF5B-RET fusions in lung adenocarcinoma. *Nat Med.* 2012;18(3):375–377. doi:10.1038/nm.2644



12. Hart CD, De Boer RH. Profile of cabozantinib and its potential in the treatment of advanced medullary thyroid cancer. *Onco Targets Ther.* 2013;6(1):1–7.
13. Samadi AK, Mukerji R, Shah A, Timmermann BN, Cohen MS. A novel RET inhibitor with potent efficacy against medullary thyroid cancer in vivo. *Surgery.* 2010;148(6):1228–1236. doi:10.1016/j.surg.2010.09.026
14. Andrew IS, Michael PC, Keith AC, et al. Large-scale analysis of the human and mouse transcriptomes. *Proc Natl Acad Sci U S A.* 2002;99(7):4465–4470. doi:10.1073/pnas.012025199
15. Sasaki H, Shimizu S, Tani Y, et al. RET expression and detection of KIF5B/RET gene rearrangements in Japanese lung cancer. *Cancer Med.* 2012;1(1):68–75. doi:10.1002/cam4.13
16. Huang Q, Schneeberger VE, Luettker N, et al. Preclinical modeling of KIF5B-RET fusion lung adenocarcinoma. *Mol Cancer Ther.* 2016;15(10):2521. doi:10.1158/1535-7163.MCT-15-0003
17. Roskoski JR, Sadeghnejad A. Role of RET protein-tyrosine kinase inhibitors in the treatment RET-driven thyroid and lung cancers. *Pharmacol Res.* 2017;128:1. doi:10.1016/j.phrs.2017.12.021
18. Suehara Y, Arcila M, Wang L, et al. Identification of KIF5B-RET and GOPC-ROS1 fusions in lung adenocarcinomas through a comprehensive mRNA-based screen for tyrosine kinase fusions. *Clin Cancer Res.* 2012;18(24):6599–6608. doi:10.1158/1078-0432.CCR-12-0838
19. Ni J, Li Z. Evaluation of three small molecular drugs for targeted therapy to treat non-small cell lung cancer. *Chin Med J (Engl).* 2016;129(3):332–340. doi:10.4103/0366-6999.174484
20. Borrelli N, Giannini R, Proietti A, et al. KIF5B/RET fusion gene analysis in a selected series of cytological specimens of EGFR, KRAS and EML4-ALK wild-type adenocarcinomas of the lung. *Lung Cancer.* 2013;81(3):377–381. doi:10.1016/j.lungcan.2013.06.026
21. Kim JO, Lee J, Shin JY, et al. KIF5B-RET fusion gene may coincide oncogenic mutations of EGFR or KRAS gene in lung adenocarcinomas. *Diagn Pathol.* 2015;10(1):143. doi:10.1186/s13000-015-0368-z
22. Akcay S, Er Dedekarginoglu B. Smoking cessation in lung cancer. *J Lung Cancer Diagn Treat.* 2016;1:105. doi:10.4172/jlcdt.1000105
23. Yano S, Takeuchi S, Nakagawa T, Yamada T. Ligand-triggered resistance to molecular targeted drugs in lung cancer: roles of hepatocyte growth factor and epidermal growth factor receptor ligands. *Cancer Sci.* 2012;103(7):1189–1194. doi:10.1111/j.1349-7006.2012.02279.x
24. Wang R, Hu H, Pan Y, et al. RET fusions define a unique molecular and clinicopathologic subtype of non-small-cell lung cancer. *J Clin Oncol.* 2012;30(35):4352–4359. doi:10.1200/JCO.2012.44.1477
25. Lipson D, Capelletti M, Yelensky R, et al. Identification of new ALK and RET gene fusions from colorectal and lung cancer biopsies. *Nat Med.* 2012;18(3):382–384.
26. Antonicelli A, Cafarotti S, Indini A, et al. EGFR-targeted therapy for non-small cell lung cancer: focus on EGFR oncogenic mutation. *Int J Med Sci.* 2013;10(3):320–330. doi:10.7150/ijms.4609
27. Pao W, Girard N. New driver mutations in non-small-cell lung cancer. *Lancet Oncol.* 2011;12(2):175–180. doi:10.1016/S1470-2045(10)70087-5
28. Takeuchi K, Soda M, Togashi Y, et al. RET, ROS1 and ALK fusions in lung cancer. *Nat Med.* 2012;18(3):378–381. doi:10.1038/nm.2658
29. Yokota K, Sasaki H, Okuda K, et al. KIF5B/RET fusion gene in surgically-treated adenocarcinoma of the lung. *Oncol Rep.* 2012;28(4):1187–1192. doi:10.3892/or.2012.1908
30. Yoo SS, Jin G, Jung HJ, et al. RET fusion genes in Korean non-small cell lung cancer. *J Korean Med Sci.* 2013;28(10):1555–1558. doi:10.3346/jkms.2013.28.10.1555
31. Tsuta K, Kohno T, Yoshida A, et al. RET-rearranged non-small-cell lung carcinoma: a clinicopathological and molecular analysis. *Br J Cancer.* 2014;110(6):1571–1578. doi:10.1038/bjc.2014.36
32. Pan Q, Wang Y, Chen J, et al. Investigation of the epidermal growth factor receptor mutation rate in non-small cell lung cancer patients and the analysis of associated risk factors using logistic regression. *Oncol Lett.* 2014;8(2):813–818. doi:10.3892/ol.2014.2160
33. Tsai TH, Wu SG, Hsieh MS, Yu CJ, Yang JC, Shih JY. Clinical and prognostic implications of RET rearrangements in metastatic lung adenocarcinoma patients with malignant pleural effusion. *Lung Cancer.* 2015;88(2):208–214. doi:10.1016/j.lungcan.2015.02.018
34. Song Z, Yu X, Zhang Y. Clinicopathologic characteristics, genetic variability and therapeutic options of RET rearrangements patients in lung adenocarcinoma. *Lung Cancer.* 2016;101:16–21. doi:10.1016/j.lungcan.2016.09.002
35. Yu T, Xue S, Jia C, Wang R. KIF5B-RET and EML4-ALK fusion gene expression status and survival analysis of stage IV Uyghur NSCLC patients. *J Pract Oncol.* 2018.

## Supplementary material

### Electronic search strategy

#### PICOS

P (patient or population): Lung Cancer

[MESH] (((((Lung Cancer) OR Pulmonary Neoplasm) OR Neoplasms, Lung) OR Neoplasms, Pulmonary) OR Cancer, Lung) OR Pulmonary Neoplasm.

I (intervention/exposure): RT-PCR detection the KIF5B-RET fusion gene expression

[MESH] (((((kinesin family member 5B) OR KIF5B protein, human) OR kinesin family member 5B, human) OR KIF5B-RET) OR KIF5B-RET fusion protein, human.

RET [MESH] (((((((Proto Oncogene Proteins) OR Proto-Oncogene Products, Cellular) OR Cellular Proto-Oncogene

Products) OR RET) OR Proto Oncogene Products, Cellular) OR c-onc Proteins) OR Cellular Proto-Oncogene Proteins) OR Proto-Oncogene Proteins, Cellular.

C (comparison/control): Negative expression of KIF5B-RET fusion gene.

O (outcome): Clinicopathological (age, sex, TNM stage, smoking status, histological classification and differentiation); Prognosis (PFS, OS).

Prognosis [MESH] (((((Prognoses) OR Prognostic Factors) OR Factor, Prognostic) OR Prognostic Factor) OR Factors, Prognostic.

S (study design): Diagnostic study.

#### OncoTargets and Therapy

### Publish your work in this journal

OncoTargets and Therapy is an international, peer-reviewed, open access journal focusing on the pathological basis of all cancers, potential targets for therapy and treatment protocols employed to improve the management of cancer patients. The journal also focuses on the impact of management programs and new therapeutic agents and protocols on

Submit your manuscript here: <http://www.dovepress.com/oncotargets-and-therapy-journal>

patient perspectives such as quality of life, adherence and satisfaction. The manuscript management system is completely online and includes a very quick and fair peer-review system, which is all easy to use. Visit <http://www.dovepress.com/testimonials.php> to read real quotes from published authors.

Dovepress