

Resistance Mechanism of PD-1/PD-L1 Blockade in the Cancer-Immunity Cycle

This article was published in the following Dove Press journal:
OncoTargets and Therapy

Yuan Zhuang
Chang Liu
Jiaqing Liu
Guang Li

Department of Radiation Oncology, The First Affiliated Hospital of China Medical University, Shenyang 110001, Liaoning, People's Republic of China

Abstract: In recent years, the PD-1/PD-L1 axis blockade has become a very promising therapy with significant clinical benefits for multiple tumor types. However, some patients still do not respond sufficiently to PD-1/PD-L1 targeted monotherapy. Therefore, investigating the mechanism of PD-1 blockade resistance will assist in exploring new immunotherapy strategies, controlling the progress of the disease, and thus bringing more sustainable survival benefits to patients. The tumor-immune cycle is divided into the following seven steps: the release of cancer antigens, cancer antigen presentation, priming and activation, trafficking of T cells to tumors, infiltration of T cells into tumors, recognition of cancer cells by T cells, and killing of cancer cells. Given that PD-1/PD-L1 blockade is primarily involved in step 7, any abnormalities in the previous steps may affect the efficacy of PD-1/PD-L1 inhibitors and lead to drug resistance. This review discussed the resistance mechanisms of PD-1/PD-L1 blockade in each cancer-immunity step to finding a more suitable treatment population and an optimized combination therapy to exert immunotherapy in tumor treatment to a greater extent.

Keywords: immunotherapy, PD-1, PD-L1, resistance

Introduction

Immunotherapy is considered as a promising method of treating cancers.¹ The 2018 Nobel Prize in Physiology or Medicine was awarded to James P. Allison and Tasuku Honjo, who discovered CTLA-4, and PD-1 separately. Immunotherapy has brought new directions to cancer treatment. PD-1/PD-L1 blockade has been used in the treatment of melanoma, non-small cell lung cancer (NSCLC),² bladder carcinoma,^{3,4} Hodgkin's lymphoma,^{5,6} and Merkel cell carcinoma.^{7,8} However, in the actual clinical practice, the presence of drug resistance reduces the efficacy of PD-1/PD-L1 blockade.

Chen and Mellman (2013) proposed the concept of “the Cancer-Immunity Cycle”, helping us to understand the multi-step complexity of cancer-immunity clearly.⁹ Tumor antigen is captured and processed into an immunogenic polypeptide by antigen-presenting cells (APCs) and is present on the APCs surface in the form of an antigen peptide-MHC molecular complex. The antigenic peptide-MHC molecules on the surface of the APCs bind to the TCR on the surface of the T cells. At the same time, the costimulatory molecules expressed by APC bind to the corresponding ligands on the surface of T cells and then activate antigen-specific T cell immune responses. PD-1/PD-L1 blockade targets the final step. It can be affected by abnormalities in any of the previous steps to produce resistance. This review discussed the resistance mechanisms of PD-1/PD-L1 blockade at each step (Figure 1).

Correspondence: Guang Li
Department of Radiation Oncology, The First Hospital of China Medical University, 155 North Nanjing Street, Heping District, Shenyang, Liaoning 110001, People's Republic of China
Tel +86-13804058616
Email zyyannis0701@163.com

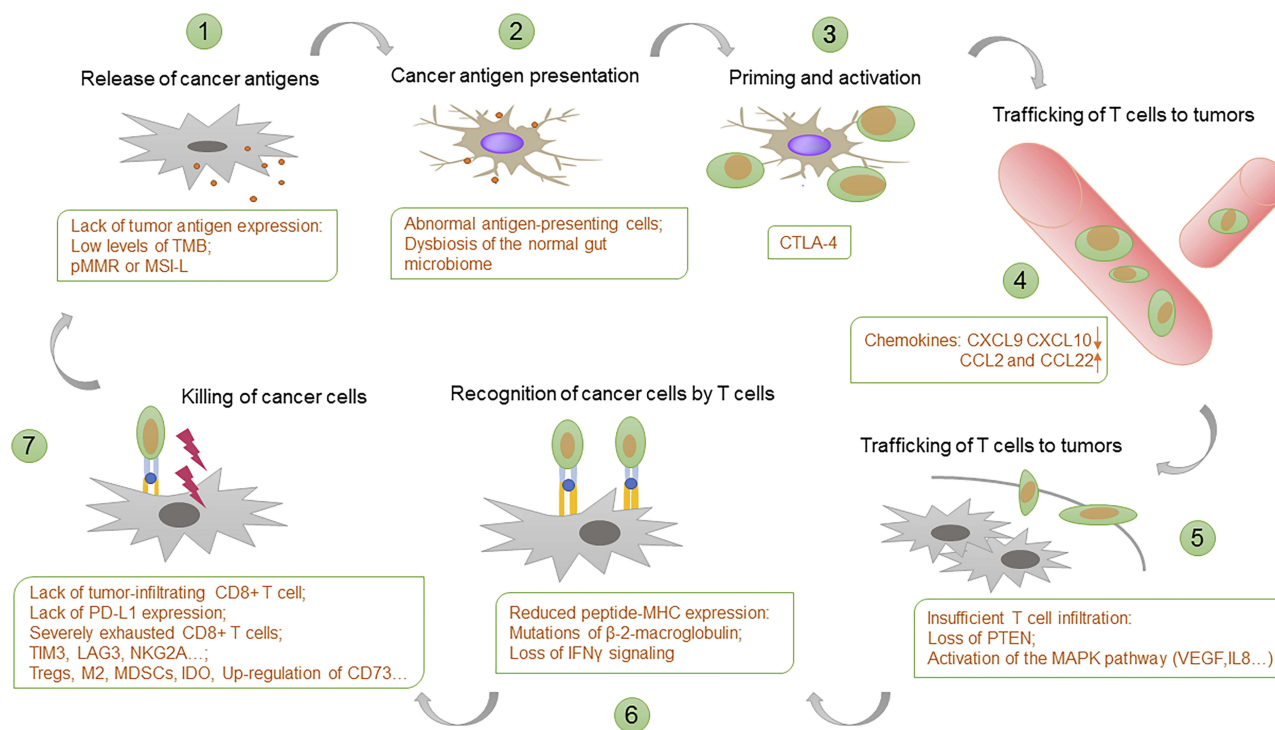


Figure 1 Resistance mechanism of PD-1/PD-L1 blockade in the cancer-immunity cycle. Each step of the cancer-immunity cycle requires the coordination of numerous factors. PD-1/PD-L1 blockade targets the final step. It can be affected by abnormalities in any of the previous steps to produce resistance. Examples of such abnormalities and the primary steps at which they can act are shown.

Lack of Tumor Antigen Expression

Tumor Mutation Burden (TMB) is defined as the total number of somatic gene coding errors, base substitutions, gene insertions, or deletion errors detected per million bases. Mutations of somatic cells can be transcribed or expressed into RNA and protein levels to produce neoantigen, protein fragments, or polypeptide segments, which can be recognized by the immune system as “non-self,” activating T cells and resulting in an immune response.^{10,11} Therefore, when the number of gene mutations accumulated per megabase increases, many neoantigens are produced. This outcome caused the tumor to be attacked by tumor-specific T cells, increasing its sensitivity to PD-1 treatment.^{12–14} High levels of TMB (>20 mut/Mb) results in high immunogenicities, which are sensitive to PD-1 blockade, as in melanomas, renal cell carcinomas, and non-small cell carcinomas.¹¹ Low levels of TMB (<10 mut/Mb) results in poor immunogenicities, as in pancreatic cancers and prostate cancers.¹⁴

Tumors lacking DNA Damage Response (DDR) pathway are less efficient at correcting genetic damage and are therefore associated with increased TMB, new antigen loading, and a better response to Immune-Checkpoint Blockers (ICBs).¹⁵ The human mismatch repair genes (MMR genes), such as MLH1, MSH2, MSH6, and PMS2, are responsible for

repairing DNA mismatches in the genome.¹⁶ MMR defects lead to the accumulation of base mismatch in the DNA replication process, resulting in the occurrence of microsatellite instability (MSI). About 15% of colorectal cancers are related to the MSI pathway. MSI is classified into high-level instability (MSI-H), low-level instability (MSI-L) and microsatellite-stable subtype (MS-S). MMR is classified into defective DNA mismatch repair (dMMR) and proficient mismatch repair (pMMR). dMMR is equivalent to MSI-H, and pMMR is equivalent to MSI-L or MSS. Patients with colorectal cancer experiencing dMMR or MSI-H are more likely to benefit from immunotherapy.¹⁷ However, PD-1/PD-L1 drug therapy is unsatisfactory in patients with pMMR or MSI-L. The antigen expression is low, and the immunogenicity is deficient in these patients, failing T cell activation.

Lack of Effective Antigen Presentation and T Cell Initiation

Abnormal Antigen-Presenting Cells

Antigen-presenting cells (APCs) process antigens and present them to T-cells and are therefore vital for an effective adaptive immune response. Dendritic cells (DCs) are one of the essential APCs which can activate unsensitized naive

T cells. Most of the DCs in the human body are in an immature state, expressing low levels of costimulatory factors and adhesion factors. Immature DCs have the powerful antigenic phagocytic ability. When stimulated by antigens, immature DCs differentiate into mature DCs, which express high levels of costimulatory and adhesion factors. During the maturation process, DCs migrate from the peripheral tissues into the secondary lymphoid organs, contacting T cells and stimulating an immune response. DCs, as the most potent APCs currently discovered, are capable of inducing specific cytotoxic T lymphocytes (CTLs) production.¹⁸

However, DCs often do not function efficiently in the tumor environment. The tumor microenvironment can affect the distribution, differentiation, and maturation of DCs. (1) The tumor microenvironment affects DCs distribution. Studies have shown that the number of DCs in peripheral blood of patients with head and neck squamous cell carcinoma is different from that of healthy people. The bone marrow-derived DCs precursor cells in peripheral blood of patients with tumors were significantly lower than normal. In a series of studies on tumor prognosis, it was found that there was a significant correlation between abnormalities in the number of DCs in peripheral blood and poor prognosis. DCs infiltrated in tumor tissues are mostly immature phenotypes, while DCs in adjacent tissues are mostly mature DCs. Tumor-derived cytokines and chemokines can recruit immature DCs to migrate to tumor tissue, subsequently limit their maturation and function. (2) The tumor microenvironment affects DCs differentiation. DCs are antigen-presenting cell populations derived from CD34 hematopoietic stem cells. Studies showed that tumor cells and related factors in the tumor microenvironment could interfere with the differentiation of DC precursor cells, resulting in decreased or even loss of DCs' activities. It was confirmed that IL-6 and granulocyte colony-stimulating factor (G-CSF) secreted by tumor cells blocked the differentiation of CD34 cells into DCs. IL-6 inhibits the differentiation of precursor cells into DCs by activating the STAT3 signaling pathway. VEGF secreted by tumor cells, which promotes tumor blood vessel growth, is directly involved in local immunosuppression. VEGF can block the differentiation of CD34 cells into DCs by inhibiting the activity of NF- κ B in cells. Recent studies showed that prostaglandin E₂ (PGE₂) produced by tumor cells inhibited the differentiation of bone marrow precursor cells and monocytes into DCs.¹⁹ (3) The tumor microenvironment affects DCs maturation. IL-10 is an essential regulator of DCs

maturation and function. Studies showed that IL-10 mainly plays a role in blocking DCs maturation and activation of T cells, but does not affect the migration of mature DCs to regional lymph nodes. IL-10 negatively regulates the expression of DCs co-stimulatory molecules and the secretion of pro-inflammatory factors such as IL-12 and TNF by activating the STAT3 signaling pathway in immature DCs, making it unable to provide a second signal for T cells activation. Tumor cells, stromal cells, and various infiltrating immune cells in the tumor microenvironment can highly express PGE₂. Functions of PGE₂ are different due to different maturity degree and distribution of DCs. In peripheral tissues, PGE₂ allows DCs to overexpress CCR7 and promote DCs migration to secondary lymphoid organs. When DCs migrate to the secondary lymphoid organs, PGE₂ increases the secretion of IL-10 by DCs themselves, inhibits DCs maturation, significantly decreases the expression of MHC molecules, and decreases the ability to activate T cells.^{20–22}

Dysbiosis of the Normal Gut Microbiome

An increasing number of studies have shown that the human gut microbiome can affect the development of cancer and the effect of immunotherapy.²³ Patients who respond well to treatment with PD-1 inhibitors show a notable difference in gut microbiome structure compared to patients who do not respond well to the same treatment.²⁴ Through large-scale tests, it was found that bifidobacteria may enhance the body's immune response by stimulating DCs directly, inducing DCs maturation and cytokine secretion, contributing to the activation of tumor-killing T cells and the enhancement of PD-1/PD-L1 blockade.^{25,26} Akkermansia muciniphila can enhance the response of PD-1/PD-L1 blockade by increasing CD4⁺ central memory T cell (T_{CM}), CD4/Foxp3 ratio, and IL-12 production in the tumor bed and increasing IFN- γ production.²³ T_{CM} expresses chemokine receptor CXCR3 or CCR9. CXCR3 is related to the recruitment of Th1 cells to inflamed lesions, while the CCR9/CCL25 axis is associated with chemotactic migration of T cells, especially in intestine and colon.²⁷ Besides, Enterococcus hirae combined with Akkermansia muciniphila may elevate T_{CM} and increase the production of IFN- γ so that it had a synergistic effect with PD-1 blockade combined with Akkermansia muciniphila.²³ Collinsella aerofaciens and Enterococcus faecium were related to enhanced efficacy of PD-1 blockade by leading to decreased peripherally derived Tregs.²⁸ Significant differences were observed

in the diversity and composition of the patient gut microbiome of responders (R) versus non-responders (NR) in melanoma patients receiving PD-1 blockade therapy. Immune profiling suggested enhanced systemic and anti-tumor immunity in responding patients with a favorable gut microbiome.²⁷ In conclusion, the gut microbiome can affect at a critical point in the anti-tumor response, and the stable gut microbiome can enhance the immune surveillance of tumor cells.

Migration Disorders of T Cells

Chemokines are low molecular weight proteins that are capable of attracting immune cells to the site of infection. They play a two-way regulatory role in tumor immune microenvironment. On the one hand, stromal cells in tumors and tumor tissues recruit CXCL9, CXCL10, CXCL11, CCL3, CCL4, CCL5, and other chemokines to recruit NK cells and CTLs, causing anti-tumor immune response.^{29,30} On the other hand, high levels of chemokines such as CCL2 and CCL22 in the tumor microenvironment, inhibit the immune response by recruiting immunosuppressive cells such as MDSCs, Tregs, and M2 cells. Therefore, the level of chemokines in the tumor tissue determines the immune status of the tumor. For example, CXCL9 and CXCL10 silencing caused by DNA methylation inhibit T cells homing and thus cause resistance to immune checkpoint drugs.^{30,31} The use of Hypomethylating agents (HMAs) reduces the inhibition of chemokines and increases TILs, thereby increasing the therapeutic effect of PD-1/PD-L1 blockade.³²

Insufficient T Cell Infiltration

Loss of PTEN

The PI3K-AKT-mTOR pathway is a crucial signal transduction pathway encompassing several oncogenes. This pathway is involved in essential cellular processes such as cell survival, proliferation, and differentiation. In patients, the loss of PTEN is associated with a reduction of T cells infiltration in the tumor microenvironment and a weaker effect of PD-1 blockade treatment. In the mouse model of melanoma, Peng et al (2016) observed that the loss of PTEN in tumor cells increased the expression of immunosuppressive cytokines, which reduced the infiltration of T cells and inhibited autophagy. Treatment with a selective PI3K β inhibitor improved the efficacy of anti-PD-1 antibodies.³³ In a mouse model of prostate tumor, Garcia et al (2014) found that PTEN-null mice exhibited high levels of infiltration of MDSCs, which excluded

CD8⁺ and NK cells from TME and reduced their cytotoxic activity.³⁴ Besides, PTEN-loss reduced autophagic activities in melanoma, reducing T cell-mediated tumor apoptosis.³⁵ Overexpressing MAP1LC3B, which is critical in autophagy initiation, improved T-cells killing, while the resistance to T cells killing was observed in MAP1LC3B-silenced tumor cells. Studies showed that overexpression of MAP1LC3B in PTEN-silenced tumor cells completely restored sensitivity to T-cells killing. Furthermore, pre-treatment of melanoma cells with the autophagy inhibitor hydroxychloroquine (HCQ) reduced the apoptosis induced by autologous TILs.³³

Activation of the MAPK Pathway

The MAPK pathway involves many different cellular processes such as proliferation, differentiation, movement, apoptosis, and survival. The pathway's carcinogenic effects have been confirmed.³⁶ Emerging evidence established the role of the MAPK pathway in regulating the immune response in TME. Activation of the MAPK pathway leads to the production of VEGF and IL-8, both of which are angiogenic factors that inhibit the recruitment and infiltration of T cells.^{37,38} In human melanoma samples, inhibition of the MAPK pathway promotes CD8⁺ T cells activation and infiltration. Experiments showed that a combination of PD-1 antibody and MEK blockade treatment strategy enhanced immunocyte infiltration in the tumor bed and can improve treatment outcomes.³⁹

Incompetent Recognition of Tumor Cells by T Cells

Mutations of β -2-Microglobulin

Two signals are required for T cells activation. The first signal is initiated by TCR recognition of the antigenic peptide-MHC complex (p-MHC) on the surface of the APCs; the second signal is initiated by the interaction of co-stimulatory molecules between the T cells and the APCs. Both are required to produce an effective immune response. Tumors become targets of specific cytotoxic T lymphocytes (CTLs) by expressing many different antigen peptide MHC molecule complexes. However, in some cases, tumors lose their antigen-presenting ability by genetic mutation or epigenetic modification, thereby escaping immune recognition.

The lack of MHC class I molecules is one of the leading causes of PD-1 blockade resistance. The lack can be caused by the decrease of mRNA transcription level of

MHC molecules, the loss of genome, and the mutation of B microglobulin gene.⁴⁰ The B2M gene encodes B2M protein, which is an indispensable component of MHC class I molecules.⁴¹ Thus, mutation of the B2M gene is a mechanism of anti-PD-1 antibody treatment for resistance.⁴²

Loss of IFN γ Signaling

IFN γ produced by tumor-specific T cells can recognize tumor cells or corresponding receptors on APC, thereby exerting a powerful anti-tumor immune effect. IFN γ up-regulates the expression of MHC molecules and PD-L1, thus enhancing tumor antigen presentation and response to PD-1 treatment.⁴¹ IFN γ can also recruit other immune cells or directly inhibit tumor cell proliferation and promote apoptosis. Therefore, mutations and deletions of tumor cells IFN γ pathway-related proteins (such as IFN γ receptor IFNGR1 and IFNGR2, IFN γ receptor chain JAK1 and JAK2, STATs, and IRF1) can lead to resistance to ICIs.^{43,44}

Abnormalities of T Cell Killing Tumors

Lack of Tumor-Infiltrating CD8⁺ T Cells

A certain amount of TILs in TME is the basis for judging the efficacy of checkpoint blockade. Chen DS and Mellman I (2017) published a review proposing a new classification of immune tumors with three phenotypes; immune-desert, immune-excluded, and inflamed. Among these phenotypes, the immune-desert and immune-excluded phenotypes are cold tumors (non-inflamed), and the density of CD8⁺ T cells in the tumors is low.⁴⁵

Lack of PD-L1 Expression

Of course, it is not enough to focus on CD8⁺ T cells, but also on PD-L1 expression.⁴⁶ A threshold of 5% PD-L1 positive expression is used to determine PD-L1 positivity. Subsequent studies showed a higher objective response rate for anti-PD-1 therapy in a population of patients with PD-L1 positive disease. Progression-free survival (PFS) and overall survival (OS) were also improved in PD-L1-positive advanced melanoma and NSCLC patients when PD-L1 expression subgroup analysis was performed.^{47,48} However, there are still some problems with PD-L1 detection. The most important thing is that the expression of PD-L1 is very dynamic and unevenly distributed in tumor tissues, which is likely

to cause false-negative results. Besides, antibodies used in some tests may be insufficiently sensitive and may also cause false negatives. Now some researchers are optimizing the method of detecting PD-L1 and hoping to bring better prediction results by then.

Based on TILs and PD-L1 expression, Teng et al (2015) divided the tumor microenvironment into four categories. These include type I, (PD-L1⁺ with TILs), type II (PD-L1⁻ with no TILs), type III (PD-L1⁺ with no TILs), and type IV (PD-L1⁻ with TILs).⁴⁹ Among these four types, type I is the optimal candidate for PD-1/PD-L1 treatment.

Severely Exhausted CD8⁺ T Cells

In vitro studies have shown that the intensity of the PD-1 signal, namely its relative expression level or ligand abundance, can determine the severity of T cells exhaustion and thus affect the sensitivity to anti-PD-1 therapy. In some mouse models, PD-1 expression is high, and T cells are severely anergic, which is associated with resistance to anti-PD-1 therapy.⁵⁰ After PD-1 treatment in patients with low or moderate expression of PD-1, exhausted T cells can be reactivated to exert their immune effects. Therefore, whether PD-1 blockade intervention can effectively reverse T cells anergy may depend on the ratio of low-medium expression to high expression of T cells before treatment.

Activation of Other Inhibitory Immune Checkpoints

In the anti-tumor immunity process, there are some other immune checkpoints, including CTLA-4, TIM3, LAG3, NKG2A, and so on, which are gradually recognized and participate in co-regulating immune responses with PD-1/PD-L1 treatment. However, which immunological checkpoints are dominant and whether the intensity of different immune checkpoints is different in different tumors or tumor development stages remains to be studied.

CTLA-4

CTLA-4 is also an inhibitory immune checkpoint molecule whose ligands are CD80 and CD86 on APCs. CTLA-4 is primarily expressed on regulatory T cells (Tregs), Tregs are negative immunoregulatory cells which have inhibitory effects on tumor immunity.^{51,52} The combination of anti-PD-1 and anti-CTLA-4 synergistically reduces inhibitory signals and enhances anti-tumor response.⁵³ The efficacy of the clinical combination of CTLA-4 and PD-1/PD-L1 mAbs has been confirmed.⁵⁴ Therefore, screening

of the best combination of immune checkpoints to achieve optimal clinical efficacy will be the direction of future research.⁵⁵

LAG-3

Lymphocyte activating gene 3 (LAG-3) is an inhibitory immune checkpoint molecule expressed by T cells, NK cells, and B cells. LAG-3 blockade can increase the number of activated CD8⁺ T cells⁵⁶ and inhibit the activity of Tregs⁵⁷ in the tumor microenvironment, thereby restoring anti-tumor immunity.⁵⁸ Additionally, anti-LAG-3 checkpoint blockade, in combination with tumor-specific CD4⁺ T cells and irradiation, overcame PD-L1 mAbs primary resistance and treated established tumors resulting in fewer recurrences.⁵⁹ LAG-3 expression on TILs was significantly correlated with that of PD-1 expression and was also significantly associated with negative prognostic factors.^{60,61} Surprisingly, the combination of the LAG-3 blockade and PD-1 blockade was more effective than the PD-1 blockade alone. Studies in other multiple models have shown significant inhibition of tumors by the combination of LAG-3 blockade and PD-1 blockade.⁶²

TIM-3

T cell immunoglobulin mucin-3 (TIM-3) plays a vital role in regulating TH1 cell-mediated immune responses. Inhibition of the TIM-3 pathway reduced the infiltration of Tregs and thus slowed down the growth of mouse Lewis lung cancer.⁶³ Koyama et al (2016) observed an increase in TIM-3 expression in TILs following PD-1 blockade acquired resistance. The expression degree of TIM-3 was also significantly correlated with the stage of PD-1 treatment. The positive expression was lower before treatment and during the sensitive period and was significantly increased after drug resistance. Moreover, the positive expression of TIM-3 was also significantly correlated with the degree of PD-1 antibody binding in T cells. The higher the degree of T cells binding to PD-1 blocking, the stronger the TIM-3 positive expression.⁶⁴

Limagne et al (2019) observed that the accumulation of lymphocytes and monocytes MDSCs (mMDSCs) expressing Tim-3 and galectin-9 after nivolumab treatment of a cohort of NSCLC was associated with primary or acquired resistance.⁶⁵ This result indicated that the Galectin-9/Tim-3 pathway might be a vital mechanism for resistance to PD-1 treatment and maybe a new target for immunotherapy drug combinations.

NKG2A

NKG2A is an inhibitory receptor-expressing both on CD8⁺ T cells and NK cells, whose main ligand is a non-canonical MHC-I molecule: HLA-E (human) or Qa-1b (murine). Blocking NKG2A can simultaneously abolish the immunosuppression of CD8⁺ T cells and NK cells.⁶⁶ Mingari et al (2019) used a kind of humanized anti-NKG2A antibody (Monalizumab), which enhanced the anti-tumor activity of NK cells. The effects of CTLs was restored when it was combined with PD-1/PD-L1 blockade. Therefore, the NKG2A blockade can adequately compensate for the deficiency of PD-1/PD-L1 treatment by improving the effect of NK cells.⁶⁷

Other Tumor-Suppressing Microenvironments

In the tumor microenvironment, there are also some potentially drug-related components, including immunosuppressive cells such as regulatory T cells (Tregs), bone marrow-derived suppressor cells (MDSCs) and M2 macrophages and some other inhibitory enzymes and cytokines.

Tregs

Tregs inhibit the function of effector T cells (Teffs) by secreting certain inhibitory cytokines, including IL-10 and TGF- β .⁶⁸ In vivo studies showed that removal of Tregs from the tumor microenvironment enhanced anti-tumor immunity. Besides, the efficacy of the PD-1/PD-L1 antibody was associated with an increased Teff to Tregs ratio.⁶⁹ The acquired resistance of PD-1 blockade alone or PD-1 blockade combined radiotherapy was associated with the increased Tregs infiltration. Furthermore, this resistance can be restored after the use of anti-CD25 treatment due to the depletion of Tregs.⁷⁰

MDSCs

Myeloid-derived suppressor cells (MDSCs) are a heterogeneous population of cells, including myeloid cell precursors, immature granulocytes, monocytes, and dendritic cells. Tumors can be seen as a long-term unhealed inflammatory process. There are many inflammation-related factors in the tumor microenvironment. Inflammatory factors IL-6, VEGF, proinflammatory factor COX2, PGE2, GM-CSF, M-CSF, and stem cell factor 1 (SCF-1) all can induce the expansion and activation of MDSCs. MDSCs not only inhibit the innate immune response by inhibiting the anti-tumor effect of NK cells and macrophages but also inhibit the adaptive immune

response by blocking the activation of CD4⁺/CD8⁺ T cells and increasing the infiltration of Tregs.⁷¹

Furthermore, the presence of MDSCs in the tumor microenvironment reduces the effectiveness of immunotherapy.^{72,73} A series of mouse models studies indicated that PI3K inhibitors could be used as potential therapeutic targets in combination with PD-1/PD-L1 blockade.⁷⁴ The STING/type I interferon pathway enhanced suppressive inflammation in tumors by recruiting myeloid cells in part via the CCR2 pathway. Knockout of CCR2 or treatment with anti-CCR2 blockade resulted in a blockade of radiation-induced MDSCs infiltration, thereby increasing the anti-tumor effect of radiotherapy combined with PD-1⁷⁵ treatment.

M2 Macrophages

Tumor-associated macrophages (TAMs) affect the efficacy of immunotherapy. TAMs include M1 macrophages promoting anti-tumor immunity and M2 macrophages suppressing anti-tumor immunity.⁷⁶ M2 is involved in the whole process of tumorigenesis, growth, invasion, and metastasis. In the early stage of tumor formation, M2 can promote tumor neovascularization and enhance the invasion ability of tumor cells. In the process of tumor metastasis, M2 promotes the formation of tumor “microenvironment before metastasis,” and promotes extravasation, survival and sustained the growth of tumor cells at the metastatic site. Besides, TAMs can also play a role in immunosuppressive function by releasing IL-10, TGF- β , and some other cytokines and protecting tumor cells from NK cells and T cells. In a mouse model of lung adenocarcinoma, reducing the recruitment of M2 macrophages inhibits the tumor growth, which may be related to CCL2 and CCR2 signal inactivation.⁷⁷ To overcome macrophage-associated potential drug resistance, blocking the colony-stimulating growth factor receptor (CSF-1R) in a mouse model of pancreatic cancer reduced the frequency of TAMs, increased IFN production, and enhanced the response of PD-1 treatment.⁷⁸ Rodell et al (2019) designed TLR7/8 agonist-loaded nanoparticles to promote the polarization of tumor-associated macrophages to M1 rather than M2 to enhance PD-1 blockade efficacy.⁷⁹

IDO

Indoleamine 2,3-dioxygenase 1 (IDO) produced by tumors or immune cells can increase the production and activity of Tregs and MDSCs. IDO can lower tryptophan levels, cause GCN2 activation and mTOR inhibition, inhibit the

proliferation of effector T cells, and promote its apoptosis.⁸⁰ On the other hand, IDO up-regulates kynurenine, activates Aryl hydrocarbon receptor (AhR), promotes differentiation of Tregs, and ultimately suppresses immune responses.^{81,82} Studies showed that when B16 melanoma was treated with PD-1 blockade, the tumor growth of IDO knockout mice was significantly delayed, and the overall survival rate was improved compared with wild type mice.⁸³ Based on these studies, the combination of IDO inhibitors with PD-1/PD-L1 antibodies may be more effective than single agents.⁸⁴ However, on April 6, 2018, Incyte and Merck announced that an external Data Monitoring Committee (eDMC) review of the pivotal Phase 3 ECHO-301/KEYNOTE-252 study results evaluating Incyte's epacadostat in combination with Merck's KEYTRUDA[®] in patients with unresectable or metastatic melanoma determined that the study did not meet the primary endpoint of improving PFS in the overall population compared to KEYTRUDA monotherapy. The study's second primary endpoint of OS also was not expected to reach statistical significance. Based on these results, and at the recommendation of the eDMC, the study was stopped.⁸⁵ This proves that immunotherapy has a long way to go. We should continue to explore other novel mechanisms that can potentially improve outcomes for patients in need.

Up-Regulation of CD73

CD39 is capable of hydrolyzing ATP to AMP and further processing AMP into immunosuppressive molecule adenosine by extracellular nucleosidase CD73. Adenosine can inhibit T cells proliferation and activity through the A2A receptor of T cells and can promote tumor metastasis through the A2B receptor of tumor cells.⁸⁶ Besides, the co-expression of CD39 and CD73 is considered a key mechanism for Tregs-mediated immunosuppression. In many types of tumors, the high expression of CD73 is accompanied by a poor prognosis and efficiency of PD-1 blockade.⁸⁷ Antisense oligonucleotide targeting CD39 can improve T cell anti-tumor immunity.⁸⁸

Expression of Specific Driver Genes EGFR Mutation

NSCLC patients with an EGFR mutation have limited benefits.⁸⁹ Firstly, a patient with an EGFR mutation was found to have a low tumor mutation load (TMB). Patients with a dominant gene had lower overall TMB, resulting in unsatisfactory benefits for patients from immunotherapy. Secondly, PD-L1 expression levels were lower for EGFR⁺

NSCLC. The global multicenter EXPRESS study analyzed global data on PD-L1 expression in patients with late NSCLC and found that PD-L1 expression was lower in EGFR⁺ NSCLC patients than in wild-type patients.⁹⁰ Finally, the tumor microenvironment of EGFR⁺ NSCLC patients was mostly immune-desert or immune-excluded. A retrospective study found that patients with EGFR⁺ NSCLC had lower levels of PD-L1 expression and less CD8⁺ TILs infiltration.⁹¹

KRAS Mutation

In tumor cells, KRAS mutation (KRAS*) can significantly inhibit the expression of interferon regulatory factor 2 (IRF2), thereby suppressing the inhibition of CXCL3 transcription by IRF2, namely up-regulating the expression and secretion of CXCL3. When CXCL3 binds to CXCR2, it can recruit MDSCs into TME and inhibit the effect of PD-1 treatment. Enhancing the expression of IRF2 or a combination of CXCR2 inhibitors can relieve PD-1 resistance in CRC patients.⁹²

Previous studies showed that different subgroups of KRAS mutant LUAC could be distinguished based on whether there was STK11/LKB1 or TP53 co-mutation. STK11/LKB1-type lung adenocarcinoma exhibited shorter PFS in the KRAS mutant lung adenocarcinoma cohort. Skoulidis et al (2018) reported that STK11/LKB1 alteration was a major driver of primary resistance to PD-1 inhibitors in KRAS mutant lung adenocarcinoma patients. In the KRAS mutant mouse lung adenocarcinoma model, STK11/LKB1 deletion promoted PD-1/PD-L1 inhibitor resistance.⁹³

KIR Mutation

Killer cell immunoglobulin-like receptor (KIR) interacts with human leukocyte antigen (HLA) to affect NK cells' reactivity and the total number of mature NK cells. Therefore, blocking KIR can induce anti-tumor effects by activating NK cells. Trefny et al (2019) identified a genetic variant of KIR (KIR3DS1) that was associated with primary resistance to PD-1 blockade in patients with NSCLC.⁹⁴

Conclusion

Based on the current limitations of PD-1/PD-L1 blockade, the combination of PD-1/PD-L1 blockade with other therapies has gradually become another significant development direction.⁹⁵ Radiotherapy can lead to the release of tumor antigens and increase the immunogenicity of tumors.

Combining PD-1/PD-L1 blocking therapy with radiotherapy has been proposed.^{96,97} Vaccines, CD40 agonists, and TLR agonists can primarily promote cross-presentation of DCs to enhance T cell anti-tumor responses. CTLA-4 blockade, CD137 agonists, and inflammatory cytokines such as IL-2 and IL-12 can enhance priming and activation of T cells. Bevacizumab, an anti-VEGF antibody, can disrupt immunosuppressive states and neutralize inhibitory cytokines and enzymes such as IL-10, TGF- β ⁹⁸ and IDO. Besides, by blocking TIM-3, Lag-3, and other inhibitory immune checkpoint molecules, it is also expected to enhance anti-tumor immunity by assisting PD-1 treatment.

Abbreviations

AhR: Aryl hydrocarbon receptor; APCs, Antigen-presenting cells; B2M, β 2 microglobulin; CSF-1R, Colony-stimulating growth factor receptor; CTLs, Cytotoxic T lymphocytes; CTLA-4, Cytotoxic T-lymphocyte-associated antigen-4; DCs, Dendritic cells; DDR, DNA damage repair; EGFR, Epidermal growth factor receptor; ICBs, Immune-Checkpoint Blockers; IDO, Indolamine-2,3-dioxygenase; IFN- γ , Interferon- γ ; IL-2, Interleukin-2; IL-8, Interleukin-8; IL-10, Interleukin-10; IL-12, Interleukin-12; IRF2, interferon regulatory factor 2; JAK, Janus Kinase; LAG-3, Lymphocyte activating gene 3; KIR, Killer cell immunoglobulin-like receptor; MAPK, Mitogen-activated protein kinase; MDSC, Marrow-derived inhibitory cells; MHC, Major histocompatibility complex; MMR, Mismatch repair; MSS, microsatellite stabilization; NSCLC, Non-small cell lung cancer; OS, Overall survival; PD-1, Programmed death-1; PD-L1, Programmed cell death 1 ligand 1; PFS, Progression-free survival; PTEN, Phosphatase and tensin homolog deleted on chromosome ten; SCF-1, stem cell factor 1; STAT, Signal transducers and activators of transcription; TAMs, Tumor-associated macrophages; Tcm, memory T cell; TCR, T cell receptors; Teff, effector T cells; TIL, Tumor infiltrating lymphocyte; TIM-3, T cell immunoglobulin mucin-3; TMB, Tumor mutation burden; TME, Tumor microenvironment; VEGF, Vascular endothelial growth factor.

Statement of Human and Animal Rights

No experiments have been performed, including patients or animals.

Statement of Informed Consent

Patients have not been involved in the study.

Acknowledgments

The Chinese Society of Clinical Oncology supported this work.

Author Contributions

All authors contributed to data analysis, drafting or revising the article, gave final approval of the version to be published, and agree to be accountable for all aspects of the work.

Funding

This study was supported by funding from the CSCO-QiLu Oncology Research Fund (No. Y-G201801-055).

Disclosure

The authors declare that they have no conflicts of interest.

References

1. Rotte A, D'Orazi G, Bhandaru M. Nobel committee honors tumor immunologists. *J Exp Clin Cancer Res*. 2018;37(1):262. doi:10.1186/s13046-018-0937-6
2. Wang S, Hao J, Wang H, Fang Y, Tan L. Efficacy and safety of immune checkpoint inhibitors in non-small cell lung cancer. *Oncotarget*. 2018;7(8):e1457600. doi:10.1080/2162402X.2018.1457600
3. Bellmunt J, Powles T, Vogelzang NJ. A review on the evolution of PD-1/PD-L1 immunotherapy for bladder cancer: the future is now. *Cancer Treat Rev*. 2017;54:58–67. doi:10.1016/j.ctrv.2017.01.007
4. Suzman DL, Agrawal S, Ning YM, et al. FDA approval summary: atezolizumab or pembrolizumab for the treatment of patients with advanced urothelial carcinoma ineligible for cisplatin-containing chemotherapy. *Oncologist*. 2019;24(4):563–569. doi:10.1634/theoncologist.2018-0084
5. Ansell SM, Lesokhin AM, Borrello I, et al. PD-1 blockade with nivolumab in relapsed or refractory Hodgkin's lymphoma. *N Engl J Med*. 2015;372(4):311–319. doi:10.1056/NEJMoa1411087
6. Kasamon YL, de Claro RA, Wang Y, Shen YL, Farrell AT, Pazdur R. FDA approval summary: nivolumab for the treatment of relapsed or progressive classical hodgkin lymphoma. *Oncologist*. 2017;22(5):585–591. doi:10.1634/theoncologist.2017-0004
7. Nghiem PT, Bhatia S, Lipson EJ, et al. PD-1 blockade with pembrolizumab in advanced merkel-cell carcinoma. *N Engl J Med*. 2016;374(26):2542–2552. doi:10.1056/NEJMoa1603702
8. Mitteldorf C, Berisha A, Tronnier M, Pfaltz MC, Kempf W. PD-1 and PD-L1 in neoplastic cells and the tumor microenvironment of merkel cell carcinoma. *J Cutan Pathol*. 2017;44(9):740–746. doi:10.1111/cup.2017.44.issue-9
9. Chen DS, Mellman I. Oncology meets immunology: the cancer-immunity cycle. *Immunity*. 2013;39(1):1–10. doi:10.1016/j.immuni.2013.07.012
10. Chalmers ZR, Connelly CF, Fabrizio D, et al. Analysis of 100,000 human cancer genomes reveals the landscape of tumor mutational burden. *Genome Med*. 2017;9(1):34. doi:10.1186/s13073-017-0424-2
11. Goodman AM, Kato S, Bazhenova L, et al. Tumor mutational burden as an independent predictor of response to immunotherapy in diverse cancers. *Mol Cancer Ther*. 2017;16(11):2598–2608. doi:10.1158/1535-7163.MCT-17-0386
12. Riaz N, Morris L, Havel JJ, Makarov V, Desrichard A, Chan TA. The role of neoantigens in response to immune checkpoint blockade. *Int Immunol*. 2016;28(8):411–419. doi:10.1093/intimm/dxw019
13. Furness AJ, Quezada SA, Peggs KS. Neoantigen heterogeneity: a key driver of immune response and sensitivity to immune checkpoint blockade? *Immunotherapy*. 2016;8(7):763–766. doi:10.2217/imt-2016-0064
14. Schumacher TN, Schreiber RD. Neoantigens in cancer immunotherapy. *Science*. 2015;348(6230):69–74. doi:10.1126/science.aaa4971
15. Le DT, Durham JN, Smith KN, et al. Mismatch repair deficiency predicts response of solid tumors to PD-1 blockade. *Science*. 2017;357(6349):409–413. doi:10.1126/science.aan6733
16. AACR Project GENIE. Powering precision medicine through an international consortium. *Cancer Discov*. 2017;7(8):818–831. doi:10.1158/2159-8290.CD-17-0151
17. Sclafani F. PD-1 inhibition in metastatic dMMR/MSI-H colorectal cancer. *Lancet Oncol*. 2017;18(9):1141–1142. doi:10.1016/S1470-2045(17)30512-0
18. Xu A, Zhang L, Yuan J, et al. TLR9 agonist enhances radiofrequency ablation-induced CTL responses, leading to the potent inhibition of primary tumor growth and lung metastasis. *Cell Mol Immunol*. 2018;16(10):820–832.
19. Ye F, Chen HZ, Xie X, Ye DF. [Effects of vascular endothelial growth factor on differentiation and function of dendritic cells generated from CD34+ hematopoietic progenitor cells in vitro]. *Zhonghua Xue Ye Xue Za Zhi*. 2004;25(9):532–535.
20. Wolffe SJ, Strebosky J, Bartz H, et al. PD-L1 expression on tolerogenic APCs is controlled by STAT-3. *Eur J Immunol*. 2011;41(2):413–424. doi:10.1002/eji.201040979
21. Koga MM, Bizzarro B, Sa-Nunes A, Rios FJ, Jancar S. Activation of PAF-receptor induces regulatory dendritic cells through PGE2 and IL-10. *Prostaglandins Leukot Essent Fatty Acids*. 2013;89(5):319–326. doi:10.1016/j.plefa.2013.09.003
22. Youlin K, Weiyang H, Simin L, Xin G. Prostaglandin E2 inhibits prostate cancer progression by countervailing tumor microenvironment-induced impairment of dendritic cell migration through LXRalpha/CCR7 pathway. *J Immunol Res*. 2018;2018:5808962. doi:10.1155/2018/5808962
23. Routy B, Le Chatelier E, Derosa L, et al. Gut microbiome influences efficacy of PD-1-based immunotherapy against epithelial tumors. *Science*. 2018;359(6371):91–97. doi:10.1126/science.aan3706
24. Burki TK. Gut microbiome and immunotherapy response. *Lancet Oncol*. 2017;18(12):e717. doi:10.1016/S1470-2045(17)30841-0
25. Ruiz L, Delgado S, Ruas-Madiedo P, Sanchez B, Margolles A. Bifidobacteria and their molecular communication with the immune system. *Front Microbiol*. 2017;8:2345. doi:10.3389/fmicb.2017.02345
26. Sivan A, Corrales L, Hubert N, et al. Commensal Bifidobacterium promotes antitumor immunity and facilitates anti-PD-L1 efficacy. *Science*. 2015;350(6264):1084–1089. doi:10.1126/science.aac4255
27. Gopalakrishnan V, Spencer CN, Nezi L, et al. Gut microbiome modulates response to anti-PD-1 immunotherapy in melanoma patients. *Science*. 2018;359(6371):97–103.
28. Matson V, Fessler J, Bao R, et al. The commensal microbiome is associated with anti-PD-1 efficacy in metastatic melanoma patients. *Science*. 2018;359(6371):104–108. doi:10.1126/science.aao3290
29. Tokunaga R, Zhang W, Naseem M, et al. CXCL9, CXCL10, CXCL11/CXCR3 axis for immune activation - A target for novel cancer therapy. *Cancer Treat Rev*. 2018;63:40–47. doi:10.1016/j.ctrv.2017.11.007
30. Herbst RS, Soria JC, Kowanetz M, et al. Predictive correlates of response to the anti-PD-L1 antibody MPDL3280A in cancer patients. *Nature*. 2014;515(7528):563–567. doi:10.1038/nature14011
31. Hu J, Sun C, Bernatchez C, et al. T-cell homing therapy for reducing regulatory T cells and preserving effector T-cell function in large solid tumors. *Clin Cancer Res*. 2018;24(12):2920–2934. doi:10.1158/1078-0432.CCR-17-1365

32. Peng D, Kryczek I, Nagarsheth N, et al. Epigenetic silencing of TH1-type chemokines shapes tumour immunity and immunotherapy. *Nature*. 2015;527(7577):249–253. doi:10.1038/nature15520
33. Peng W, Chen JQ, Liu C, et al. Loss of PTEN promotes resistance to T cell-mediated immunotherapy. *Cancer Discov*. 2016;6(2):202–216. doi:10.1158/2159-8290.CD-15-0283
34. Garcia AJ, Ruscetti M, Arenzana TL, et al. Pten null prostate epithelium promotes localized myeloid-derived suppressor cell expansion and immune suppression during tumor initiation and progression. *Mol Cell Biol*. 2014;34(11):2017–2028. doi:10.1128/MCB.00090-14
35. Lorin S, Hamai A, Mehrpour M, Codogno P. Autophagy regulation and its role in cancer. *Semin Cancer Biol*. 2013;23(5):361–379. doi:10.1016/j.semcancer.2013.06.007
36. Dhillon AS, Hagan S, Rath O, Kolch W. MAP kinase signalling pathways in cancer. *Oncogene*. 2007;26(22):3279–3290. doi:10.1038/sj.onc.1210421
37. Whipple CA, Boni A, Fisher JL, et al. The mitogen-activated protein kinase pathway plays a critical role in regulating immunological properties of BRAF mutant cutaneous melanoma cells. *Melanoma Res*. 2016;26(3):223–235. doi:10.1097/CMR.0000000000000244
38. Hugo W, Zaretsky JM, Sun L, et al. Genomic and transcriptomic features of response to anti-PD-1 therapy in metastatic melanoma. *Cell*. 2016;165(1):35–44. doi:10.1016/j.cell.2016.02.065
39. Deken MA, Gadiot J, Jordanova ES, et al. Targeting the MAPK and PI3K pathways in combination with PD1 blockade in melanoma. *Oncoimmunology*. 2016;5(12):e1238557. doi:10.1080/2162402X.2016.1238557
40. Gettinger S, Choi J, Hastings K, et al. Impaired HLA class I antigen processing and presentation as a mechanism of acquired resistance to immune checkpoint inhibitors in lung cancer. *Cancer Discov*. 2017;7(12):1420–1435. doi:10.1158/2159-8290.CD-17-0593
41. Zaretsky JM, Garcia-Diaz A, Shin DS, et al. mutations associated with acquired resistance to PD-1 blockade in melanoma. *N Engl J Med*. 2016;375(9):819–829. doi:10.1056/NEJMoa1604958
42. Sucker A, Zhao F, Real B, et al. Genetic evolution of T-cell resistance in the course of melanoma progression. *Clin Cancer Res*. 2014;20(24):6593–6604. doi:10.1158/1078-0432.CCR-14-0567
43. Shin DS, Zaretsky JM, Escuin-Ordinas H, et al. Primary resistance to PD-1 blockade mediated by JAK1/2 mutations. *Cancer Discov*. 2017;7(2):188–201. doi:10.1158/2159-8290.CD-16-1223
44. Sucker A, Zhao F, Pieper N, et al. Acquired IFN γ resistance impairs anti-tumor immunity and gives rise to T-cell-resistant melanoma lesions. *Nat Commun*. 2017;8:15440. doi:10.1038/ncomms15440
45. Chen DS, Mellman I. Elements of cancer immunity and the cancer-immune set point. *Nature*. 2017;541(7637):321–330. doi:10.1038/nature21349
46. Bocanegra A, Fernandez-Hinojal G, Zuazo-Ibarra M, et al. PD-L1 expression in systemic immune cell populations as a potential predictive biomarker of responses to PD-L1/PD-1 blockade therapy in lung cancer. *Int J Mol Sci*. 2019;20:7. doi:10.3390/ijms20071631
47. Rizk EM, Gartrell RD, Barker LW, et al. Prognostic and predictive immunohistochemistry-based biomarkers in cancer and immunotherapy. *Hematol Oncol Clin North Am*. 2019;33(2):291–299. doi:10.1016/j.hoc.2018.12.005
48. Naidoo J, Iyriboz T, Cunningham J, Hellmann MD. Reply to M. Nishino et al. *J Clin Oncol*. 2017;35(14):1629–1630. doi:10.1200/JCO.2016.71.6639
49. Teng MW, Ngiow SF, Ribas A, Smyth MJ. Classifying cancers based on T-cell infiltration and PD-L1. *Cancer Res*. 2015;75(11):2139–2145. doi:10.1158/0008-5472.CAN-15-0255
50. Ngiow SF, Young A, Jacquelot N, et al. A threshold level of intratumor CD8 $^{+}$ T-cell PD1 expression dictates therapeutic response to anti-PD1. *Cancer Res*. 2015;75(18):3800–3811. doi:10.1158/0008-5472.CAN-15-1082
51. Buchbinder EI, Desai A. CTLA-4 and PD-1 pathways: similarities, differences, and implications of their inhibition. *Am J Clin Oncol*. 2016;39(1):98–106. doi:10.1097/COC.0000000000000239
52. Son CH, Bae J, Lee HR, Yang K, Park YS. Enhancement of anti-tumor immunity by combination of anti-CTLA-4 antibody and radioimmunotherapy through the suppression of Tregs. *Oncol Lett*. 2017;13(5):3781–3786. doi:10.3892/ol.2017.5933
53. Beavis PA, Henderson MA, Giuffrida L, et al. Dual PD-1 and CTLA-4 checkpoint blockade promotes antitumor immune responses through CD4(+)Foxp3(-) cell-mediated modulation of CD103(+) dendritic cells. *Cancer Immunol Res*. 2018;6(9):1069–1081. doi:10.1158/2326-6066.CIR-18-0291
54. Swanson MS, Sinha UK. Rationale for combined blockade of PD-1 and CTLA-4 in advanced head and neck squamous cell cancer-review of current data. *Oral Oncol*. 2015;51(1):12–15. doi:10.1016/j.oraloncology.2014.10.010
55. Tanvetyanon T, Gray JE, Antonia SJ. PD-1 checkpoint blockade alone or combined PD-1 and CTLA-4 blockade as immunotherapy for lung cancer? *Expert Opin Biol Ther*. 2017;17(3):305–312. doi:10.1080/14712598.2017.1280454
56. Grosso JF, Kelleher CC, Harris TJ, et al. LAG-3 regulates CD8 $^{+}$ T cell accumulation and effector function in murine self- and tumor-tolerance systems. *J Clin Invest*. 2007;117(11):3383–3392. doi:10.1172/JCI31184
57. Huang CT, Workman CJ, Flies D, et al. Role of LAG-3 in regulatory T cells. *Immunity*. 2004;21(4):503–513. doi:10.1016/j.immuni.2004.08.010
58. Goding SR, Wilson KA, Xie Y, et al. Restoring immune function of tumor-specific CD4 $^{+}$ T cells during recurrence of melanoma. *J Immunol*. 2013;190(9):4899–4909. doi:10.4049/jimmunol.1300271
59. Goding SR, Wilson KA, Rosinsky C, Antony PA. PD-L1-independent mechanisms control the resistance of melanoma to CD4(+) T cell adoptive immunotherapy. *J Immunol*. 2018;200(9):3304–3311. doi:10.4049/jimmunol.1701617
60. He Y, Yu H, Rozeboom L, et al. LAG-3 protein expression in non-small cell lung cancer and its relationship with PD-1/PD-L1 and tumor-infiltrating lymphocytes. *J Thorac Oncol*. 2017;12(5):814–823. doi:10.1016/j.jtho.2017.01.019
61. Lee WJ, Lee YJ, Choi ME, et al. LAG-3 and TIGIT protein expressions in cutaneous melanoma and their relationship with PD-1 tumor-infiltrating lymphocytes. *J Am Acad Dermatol*. 2019;70(2):394.
62. Burugu S, Gao D, Leung S, Chia SK, Nielsen TO. LAG-3 $^{+}$ tumor infiltrating lymphocytes in breast cancer: clinical correlates and association with PD-1/PD-L1 $^{+}$ tumors. *Ann Oncol*. 2017;28(12):2977–2984. doi:10.1093/annonc/mdx557
63. Sakuishi K, Apetoh L, Sullivan JM, Blazar BR, Kuchroo VK, Anderson AC. Targeting Tim-3 and PD-1 pathways to reverse T cell exhaustion and restore anti-tumor immunity. *J Exp Med*. 2010;207(10):2187–2194. doi:10.1084/jem.20100643
64. Koyama S, Akbay EA, Li YY, et al. Adaptive resistance to therapeutic PD-1 blockade is associated with upregulation of alternative immune checkpoints. *Nat Commun*. 2016;7:10501. doi:10.1038/ncomms10501
65. Limagne E, Richard C, Thibaudin M, et al. Tim-3/galectin-9 pathway and mMDSC control primary and secondary resistances to PD-1 blockade in lung cancer patients. *Oncoimmunology*. 2019;8(4):e1564505. doi:10.1080/2162402X.2018.1564505
66. Andre P, Denis C, Soulas C, et al. Anti-NKG2A mAb is a checkpoint inhibitor that promotes anti-tumor immunity by unleashing both T and NK cells. *Cell*. 2018;175(7):1731–1743.e1713. doi:10.1016/j.cell.2018.10.014
67. Mingari MC, Pietra G, Moretta L. Immune checkpoint inhibitors: anti-NKG2A antibodies on board. *Trends Immunol*. 2019;40(2):83–85. doi:10.1016/j.it.2018.12.009

68. Li M, Eckl J, Geiger C, Schendel DJ, Pohla H. A novel and effective method to generate human porcine-specific regulatory T cells with high expression of IL-10, TGF-beta1 and IL-35. *Sci Rep.* 2017;7(1):3974. doi:10.1038/s41598-017-04322-3
69. Arce Vargas F, Furness AJS, Solomon I, et al. Fc-optimized anti-CD25 depletes tumor-infiltrating regulatory T cells and synergizes with PD-1 blockade to eradicate established tumors. *Immunity.* 2017;46(4):577–586. doi:10.1016/j.immuni.2017.03.013
70. Oweida A, Hararah MK, Phan A, et al. Resistance to radiotherapy and PD-L1 blockade is mediated by TIM-3 upregulation and regulatory T-cell infiltration. *Clin Cancer Res.* 2018;24(21):5368–5380. doi:10.1158/1078-0432.CCR-18-1038
71. Lu LC, Chang CJ, Hsu CH. Targeting myeloid-derived suppressor cells in the treatment of hepatocellular carcinoma: current state and future perspectives. *J Hepatocell Carcinoma.* 2019;6:71–84. doi:10.2147/JHC.S159693
72. Srivastava MK, Andersson A, Zhu L, et al. Myeloid suppressor cells and immune modulation in lung cancer. *Immunotherapy.* 2012;4(3):291–304. doi:10.2217/imt.11.178
73. Meyer C, Cagnon L, Costa-Nunes CM, et al. Frequencies of circulating MDSC correlate with clinical outcome of melanoma patients treated with ipilimumab. *Cancer Immunol Immunother.* 2014;63(3):247–257.
74. Kim K, Skora AD, Li Z, et al. Eradication of metastatic mouse cancers resistant to immune checkpoint blockade by suppression of myeloid-derived cells. *Proc Natl Acad Sci U S A.* 2014;111(32):11774–11779. doi:10.1073/pnas.1410626111
75. Liang H, Deng L, Hou Y, et al. Host STING-dependent MDSC mobilization drives extrinsic radiation resistance. *Nat Commun.* 2017;8(1):1736. doi:10.1038/s41467-017-01566-5
76. Santoni M, Romagnoli E, Saladino T, et al. Triple negative breast cancer: key role of tumor-associated macrophages in regulating the activity of anti-PD-1/PD-L1 agents. *Biochim Biophys Acta Rev Cancer.* 2018;1869(1):78–84. doi:10.1016/j.bbcan.2017.10.007
77. Lehmann B, Biburger M, Bruckner C, et al. Tumor location determines tissue-specific recruitment of tumor-associated macrophages and antibody-dependent immunotherapy response. *Sci Immunol.* 2017;2:7. doi:10.1126/sciimmunol.aah6413
78. Dammeijer F, Lievens LA, Kaijen-Lambers ME, et al. Depletion of tumor-associated macrophages with a CSF-1R kinase inhibitor enhances antitumor immunity and survival induced by DC immunotherapy. *Cancer Immunol Res.* 2017;5(7):535–546. doi:10.1158/2326-6066.CIR-16-0309
79. Rodell CB, Arlauckas SP, Cuccarese MF, et al. TLR7/8-agonist-loaded nanoparticles promote the polarization of tumour-associated macrophages to enhance cancer immunotherapy. *Nat Biomed Eng.* 2018;2:578–588. doi:10.1038/s41551-018-0236-8
80. Brochez L, Chevolet I, Kruse V. The rationale of indoleamine 2,3-dioxygenase inhibition for cancer therapy. *Eur J Cancer.* 2017;76:167–182. doi:10.1016/j.ejca.2017.01.011
81. Labadie BW, Bao R, Luke JJ. Reimagining IDO pathway inhibition in cancer immunotherapy via downstream focus on the tryptophan-kynurenine-aryl hydrocarbon axis. *Clin Cancer Res.* 2019;25(5):1462–1471. doi:10.1158/1078-0432.CCR-18-2882
82. Eleftheriadis T, Pissas G, Liakopoulos V, Stefanidis I. IDO decreases glycolysis and glutaminolysis by activating GCN2K, while it increases fatty acid oxidation by activating AhR, thus preserving CD4+ T cell survival and proliferation. *Int J Mol Med.* 2018;42(1):557–568. doi:10.3892/ijmm.2018.3624
83. Holmgaard RB, Zamarin D, Munn DH, Wolchok JD, Allison JP. Indoleamine 2,3-dioxygenase is a critical resistance mechanism in antitumor T cell immunotherapy targeting CTLA-4. *J Exp Med.* 2013;210(7):1389–1402. doi:10.1084/jem.20130066
84. Khair DO, Bax HJ, Mele S, et al. Combining immune checkpoint inhibitors: established and emerging targets and strategies to improve outcomes in melanoma. *Front Immunol.* 2019;10:453. doi:10.3389/fimmu.2019.00453
85. Long GV, Dummer R, Hamid O, et al. Epcadostat plus pembrolizumab versus placebo plus pembrolizumab in patients with unresectable or metastatic melanoma (ECHO-301/KEYNOTE-252): a phase 3, randomised, double-blind study. *Lancet Oncol.* 2019;20(8):1083–1097. doi:10.1016/S1470-2045(19)30274-8
86. Allard B, Beavis PA, Darcy PK, Stagg J. Immunosuppressive activities of adenosine in cancer. *Curr Opin Pharmacol.* 2016;29:7–16. doi:10.1016/j.coph.2016.04.001
87. Deng WW, Li YC, Ma SR, et al. Specific blockade CD73 alters the “exhausted” phenotype of T cells in head and neck squamous cell carcinoma. *Int J Cancer.* 2018;143(6):1494–1504. doi:10.1002/ijc.31534
88. Kashyap AS, Thelemann T, Klar R, et al. Antisense oligonucleotide targeting CD39 improves anti-tumor T cell immunity. *J Immunother Cancer.* 2019;7(1):67. doi:10.1186/s40425-019-0545-9
89. Gainor JF, Shaw AT, Sequist LV, et al. EGFR mutations and ALK rearrangements are associated with low response rates to PD-1 pathway blockade in non-small cell lung cancer: a retrospective analysis. *Clin Cancer Res.* 2016;22(18):4585–4593. doi:10.1158/1078-0432.CCR-15-3101
90. Ji M, Liu Y, Li Q, et al. PD-1/PD-L1 expression in non-small-cell lung cancer and its correlation with EGFR/KRAS mutations. *Cancer Biol Ther.* 2016;17(4):407–413. doi:10.1080/15384047.2016.1156256
91. Dong ZY, Zhang JT, Liu SY, et al. EGFR mutation correlates with uninfamed phenotype and weak immunogenicity, causing impaired response to PD-1 blockade in non-small cell lung cancer. *Oncoimmunology.* 2017;6(11):e1356145. doi:10.1080/2162402X.2017.1356145
92. Liao W, Overman MJ, Boutin AT, et al. KRAS-IRF2 axis drives immune suppression and immune therapy resistance in colorectal cancer. *Cancer Cell.* 2019;35(4):559–572.e557. doi:10.1016/j.ccell.2019.02.008
93. Skoulidis F, Goldberg ME, Greenawalt DM, et al. STK11/LKB1 mutations and PD-1 inhibitor resistance in KRAS-mutant lung adenocarcinoma. *Cancer Discov.* 2018;8(7):822–835. doi:10.1158/2159-8290.CD-18-0099
94. Trefny MP, Rothschild SI, Uhlenbrock F, et al. A variant of a killer cell immunoglobulin-like receptor is associated with resistance to PD-1 blockade in lung cancer. *Clin Cancer Res.* 2019. doi:10.1158/1078-0432.CCR-18-3041
95. Fan L, Li Y, Chen JY, Zheng YF, Xu XM. Immune checkpoint modulators in cancer immunotherapy: recent advances and combination rationales. *Cancer Lett.* 2019. doi:10.1016/j.canlet.2019.03.050
96. Twyman-Saint Victor C, Rech AJ, Maity A, et al. Radiation and dual checkpoint blockade activate non-redundant immune mechanisms in cancer. *Nature.* 2015;520(7547):373–377. doi:10.1038/nature14292
97. Takamori S, Toyokawa G, Takada K, Shoji F, Okamoto T, Maehara Y. Combination therapy of radiotherapy and anti-PD-1/PD-L1 treatment in non-small-cell lung cancer: a mini-review. *Clin Lung Cancer.* 2018;19(1):12–16. doi:10.1016/j.clcc.2017.06.015
98. Mariathasan S, Turley SJ, Nickles D, et al. TGFbeta attenuates tumour response to PD-L1 blockade by contributing to exclusion of T cells. *Nature.* 2018;554(7693):544–548. doi:10.1038/nature25501

OncoTargets and Therapy

Dovepress

Publish your work in this journal

OncoTargets and Therapy is an international, peer-reviewed, open access journal focusing on the pathological basis of all cancers, potential targets for therapy and treatment protocols employed to improve the management of cancer patients. The journal also focuses on the impact of management programs and new therapeutic

agents and protocols on patient perspectives such as quality of life, adherence and satisfaction. The manuscript management system is completely online and includes a very quick and fair peer-review system, which is all easy to use. Visit <http://www.dovepress.com/testimonials.php> to read real quotes from published authors.

Submit your manuscript here: <https://www.dovepress.com/oncotargets-and-therapy-journal>