

CIRP Regulates BEV-Induced Cell Migration in Gliomas [Corrigendum]

Liu Y, Zhou JN, Liu K, et al. *Cancer Manag Res.* 2019;11:2015–2025.

labelling the images the Bev-treated images of U87 and U251 are incorrect.

The authors have advised there are errors in Figures 2 and 4 on pages 2019 and 2021, respectively.

The correct Figures are shown below. These errors do not affect the interpretation of data or the conclusion of the study.

Figure 2B, mistakes were made in the labelling of the treatment method. Figure 4B, due to errors in saving and

The authors apologize for these errors.

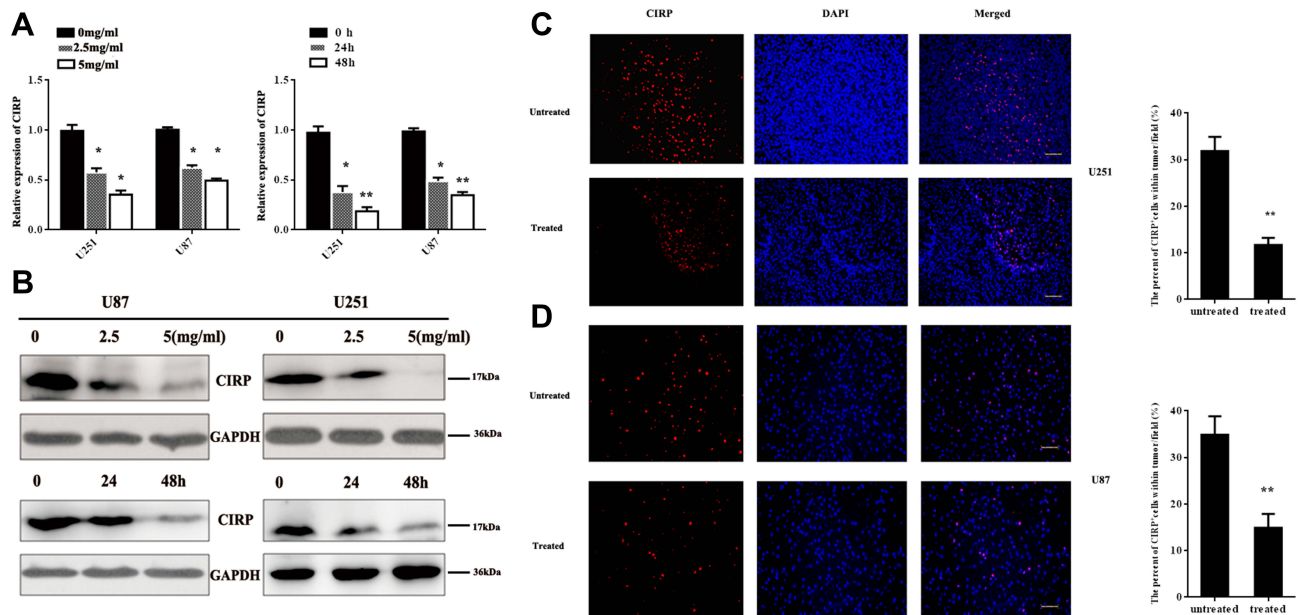


Figure 2 CIRP was downregulated after BEV treatment in vitro and in vivo.

Notes: (A, B) The mRNA and protein expressions of CIRP in U251 cells and U87 cells before and after BEV treatment were analyzed by real-time PCR and Western blot. (C, D) Representative images (left) and quantification (right) of protein levels of CIRP in tumors. U251 cells and U87 cells were implanted into the brains of anesthetized athymic nu/nu mice. Protein levels of CIRP in tumors from the mice were analyzed by immunofluorescence staining, 6 weeks after drug treatment. Untreated: without treated with BEV; treated: treated with BEV. Data represent mean \pm SD. * $P < 0.05$, ** $P < 0.01$, compared with untreated group.

Abbreviations: BEV, bevacizumab; CIRP, cold-inducible RNA-binding protein.

Cancer Management and Research downloaded from <https://www.dovepress.com/> For personal use only.

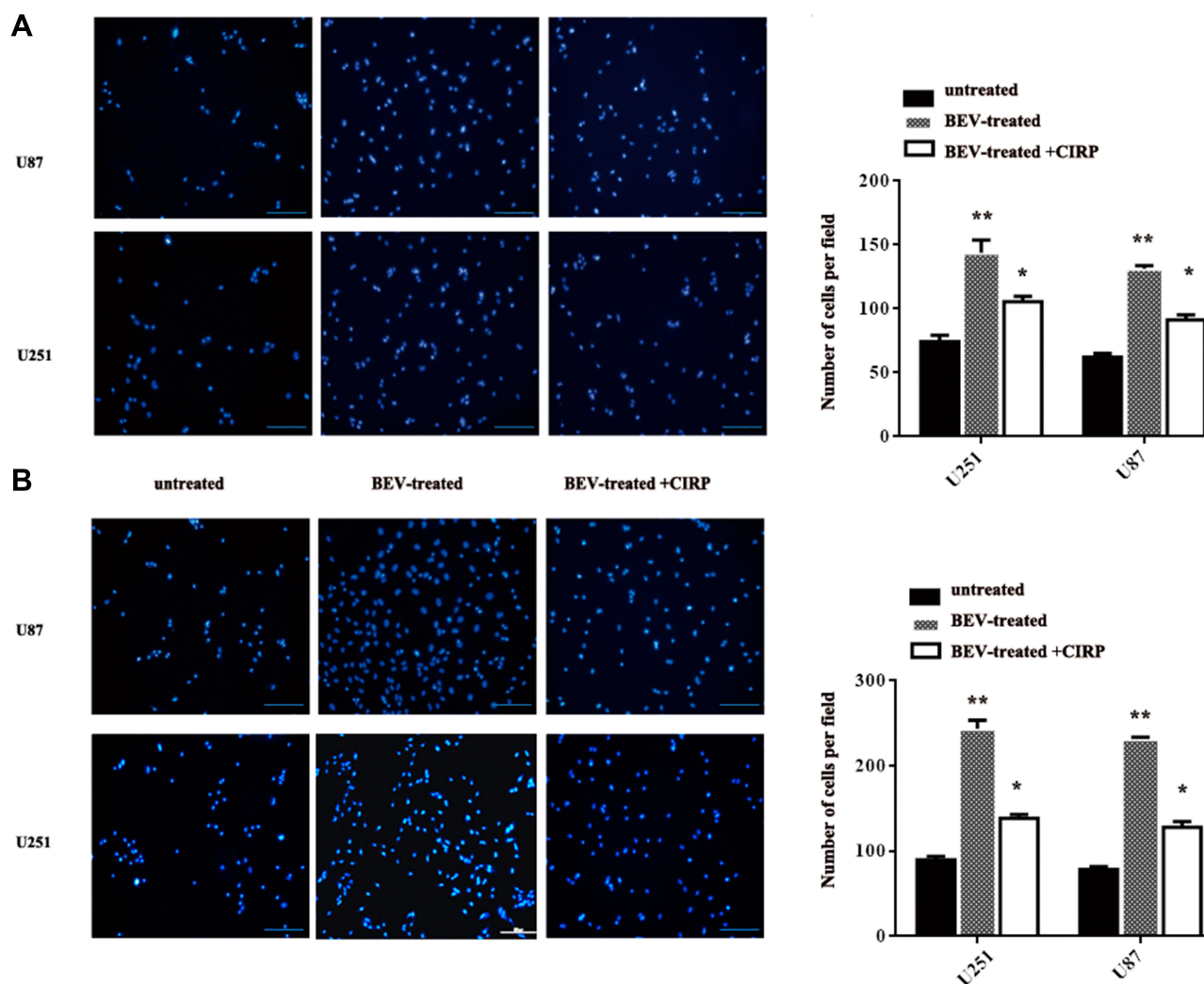


Figure 4 Transwell invasion assays of human glioma cells.

Notes: (A) Representative images (left) and quantification (right) of DAPI-stained invasive cells in transwell assay (with matrix gel). (B) Representative images (left) and quantification (right) of DAPI-stained migratory cells in transwell assay (without matrix gel). Average number of migratory invasive cells/field was analyzed. Data represent mean \pm SD, n=10. * P <0.05, ** P <0.01, compared with untreated group.

Abbreviations: BEV, bevacizumab; CIRP, cold-inducible RNA-binding protein.

Cancer Management and Research

Dovepress

Publish your work in this journal

Cancer Management and Research is an international, peer-reviewed open access journal focusing on cancer research and the optimal use of preventative and integrated treatment interventions to achieve improved outcomes, enhanced survival and quality of life for the cancer patient.

The manuscript management system is completely online and includes a very quick and fair peer-review system, which is all easy to use. Visit <http://www.dovepress.com/testimonials.php> to read real quotes from published authors.

Submit your manuscript here: <https://www.dovepress.com/cancer-management-and-research-journal>