

Prevalence and Determinants of Hypertension Among Diabetic Patients in Jimma University Medical Center, Southwest Ethiopia, 2019

This article was published in the following Dove Press journal:
Diabetes, Metabolic Syndrome and Obesity: Targets and Therapy

Daba Abdissa ¹
Kumsa Kene ²

¹Department of Biomedical Sciences
Division of Clinical Anatomy, College of
Medical Sciences, Institute of Health
Sciences, Jimma University, Jimma,
Ethiopia; ²Department of Biomedical
Sciences Division of Medical
Biochemistry, College of Medical
Sciences, Institute of Health Sciences,
Jimma University, Jimma, Ethiopia

Purpose: Hypertension is a growing public health problem with a remarkable contribution to morbidity and mortality. It is a common condition which usually coexists with diabetes and aggravates its complications. The objective of this study was to assess the prevalence and determinants of hypertension among diabetic patients attending their follow-up at Jimma University Medical Center (JUMC) from June 1 to August 30, 2019.

Methods: A hospital-based cross-sectional study was conducted in diabetic patients attending their follow-up at JUMC. Systematic random sampling and a pretested interviewer-administered structured questionnaire were used to collect information. Data were entered into EPI data 3.1 and exported to SPSS version 20. A variable having a p-value of <0.25 in the bivariate model was subjected to multivariate analysis to avoid the confounding variable's effect. Adjusted odds ratios were calculated at the 95% confidence interval and considered significant with a p-value of <0.05 .

Results: A total of 366 diabetic patients were included in the study. Their mean age was 50.1 ± 14.28 years, and the mean duration of diabetes was 6.8 ± 5.3 years. The study finding showed that the prevalence of hypertension among diabetic patients was 37.4%. According to the multivariate logistic regression analysis, age of ≥ 50 years [AOR = 4.79; 95% CI: 1.4, 16.4], having body mass index (BMI) of ≥ 25 [AOR = 3.11; 95% CI: 1.58, 6.12] and khat chewing [AOR = 19.34; 95% CI: 10.26, 36.44] were independent predictors of hypertension among diabetic patients.

Conclusion: Our study found that there is high prevalence of hypertension among diabetic patients. Age of ≥ 50 years, having BMI of ≥ 25 kg/m² and khat chewing were associated with hypertension among participants. Early detection and appropriate interventions should be an important action among patients with age ≥ 50 years, having BMI ≥ 25 kg/m² and khat chewers.

Keywords: prevalence, determinants, hypertension, diabetes, Southwest Ethiopia

Introduction

Hypertension (HTN) is the persistent elevation of systemic arterial blood. There is no sharp demarcation between normal blood pressure (BP) and HTN. However, for clinical purposes, it is defined as systolic blood pressure (SBP) of ≥ 140 millimeters of mercury (mmHg) and/or diastolic BP (DBP) of ≥ 90 mmHg or any prior diagnosis of HTN made by a health professional, and taking antihypertensive drugs.^{1,2}

Hypertension, among diabetic patients, is a worldwide public-health challenge.³ The frequency of HTN among the diabetic population is almost twice that of non-diabetic patients.⁴ Compared with other cardiovascular disorders, HTN is the most

Correspondence: Daba Abdissa
Tel +251 923503701
Email dhaabaa4@gmail.com

common comorbid disease in diabetic patients and its effects are devastating if not controlled.^{5,6} Hypertension is estimated to cause 7.5 million deaths annually, accounting for 57 million disability-adjusted life years, and accounts for about 6% of deaths worldwide.^{2,7} Globally, nearly one billion people have HTN; of these, two-thirds are in developing countries.⁸

The coexistence of HTN and diabetes mellitus (DM) is a major contributor to the development and progression of microvascular and macrovascular complications⁹. Furthermore, the development of HTN in diabetic individuals complicates the treatment strategy and increases healthcare costs.¹⁰ Up to 80% of people with diabetes will die of cardiovascular disease, especially HTN and stroke.^{9,11} The coexistence of hypertension in DM is attributed to the risk of death and cardiovascular events by 44% and 41%, respectively, as compared to 7% and 9% of these risks in people with diabetes alone.¹²

The United Kingdom Prospective Diabetes Study showed that BP control helps to prevent cardiovascular complications in patients with diabetes. Each 10 mmHg decrease in mean SBP was associated with a 12% reduction in the risk for any complication related to diabetes and a 15% reduction in deaths related to diabetes.¹³ Older age, overweight/obesity, unhealthy diet, lack of physical exercise, smoking and family history of hypertension are major risk factors for HTN.^{14,15} Focusing on detecting and managing hypertension in patients with diabetes is one of the most effective things that can be done to prevent diabetes complications.

Many countries in sub-Saharan Africa, including Ethiopia, lack detailed basic data on the prevalence and determinants of hypertension.¹⁶ Only a few studies have reported on the proportion of persons with hypertension who are aware of their hypertension and were not given due attention. To date, there is no established evidence regarding the prevalence and determinants of hypertension among diabetic patients in Jimma. Hence, this study was aimed at assessing the prevalence and determinants of hypertension among diabetic patients for better management and risk minimization in Jimma University Medical Center (JUMC), Southwest Ethiopia. This study will help provide further information regarding the magnitude of hypertension and its determinants to plan further interventions.

Methods and Materials

Study Setting, Design and Period

An institution-based cross-sectional study was conducted on 366 diabetic patients attending their follow-up at the

chronic illness clinic of JUMC, Southwest Ethiopia. It is located in Jimma city 352 km southwest of Addis Ababa. It is a teaching and referral hospital in our country serving a very large catchment area in the Southwestern Oromia region. The data collection period was from June 1 to August 30, 2019.

Population

The source population includes all adult diabetic patients at the follow-up clinic at JUMC, while the study population was all adult diabetic patients who were under routine follow-up at the JUMC during the data collection period. A total of 2500 DM patients constituted the source population.

Eligibility Criteria

Participants of age ≥ 18 years who had follow-up for at least 1 month were included and those who were critically ill, had incomplete medical records, with newly diagnosed diabetes who were not registered, with hearing difficulty and pregnant women were excluded.

Sample Size Determination

The sample size was calculated using a single population proportion formula with 95% confidence interval, 50% proportion and a margin of error 5%. This gives an initial sample size of 384. Since the estimated total population of diabetes patients was less than 10,000, we employed a population correction formula for a finite population. The final sample size according to this equation yields 333, and then adding 10% for nonresponse the final sample size was 366.

Sampling Technique

A systematic random sampling technique was employed to select study participants. There were 2500 diabetic patients registered at the follow-up clinic at JUMC. These patients were our sampling frame and the patients included in the sample were selected every six intervals based on their medical record registration numbers. The first patient was selected randomly from the first six by a lottery method, and the next patient was interviewed and examined every sixth interval until the required sample was attained (Figure 1).

Data Collection Tool and Procedure

Data were collected using a structured interviewer-administered questionnaire through face to face interviews, patient record reviews and physical examination. Behavioral

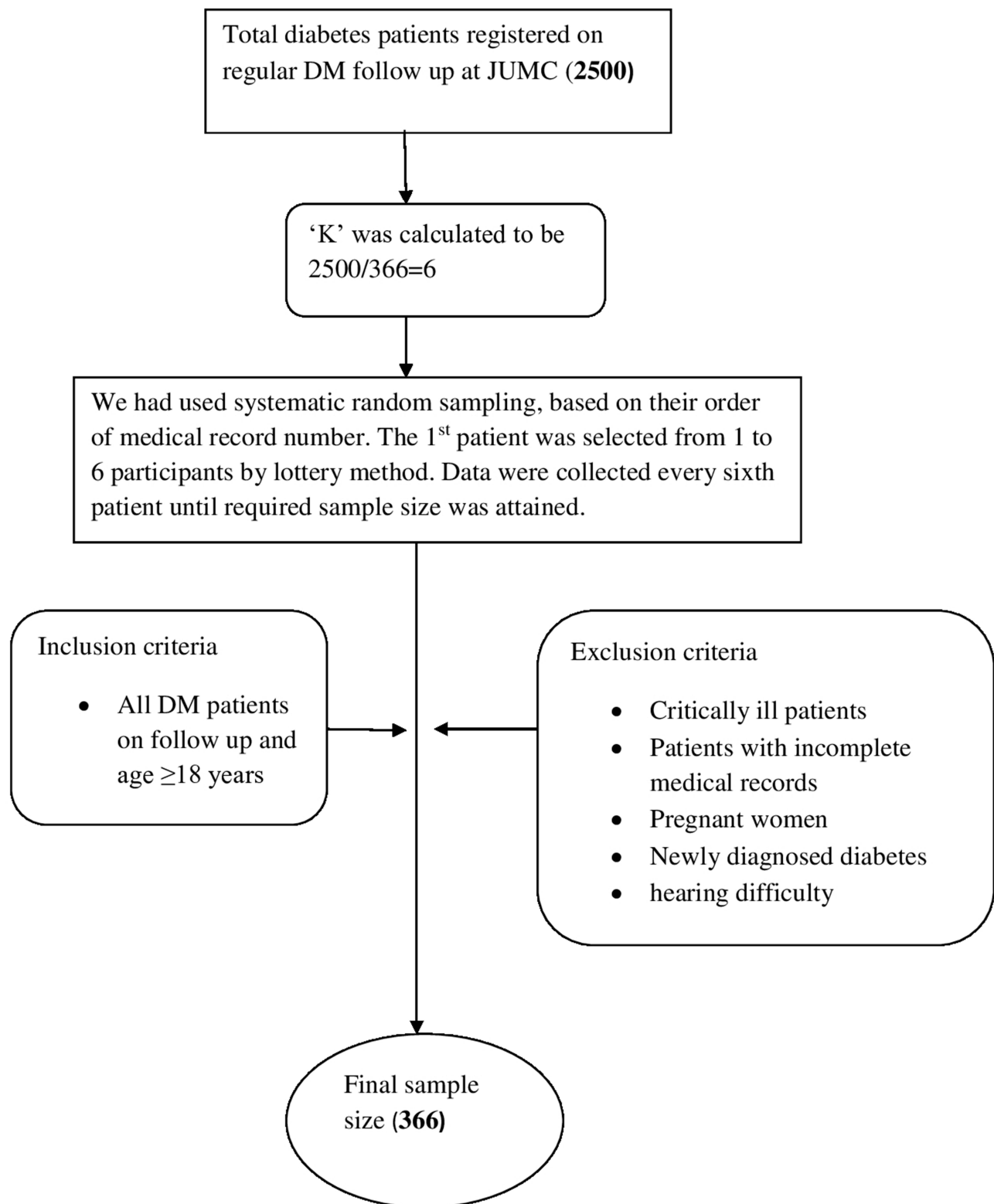


Figure 1 Flow chart to select study participants at JUMC 2019, Jimma, Ethiopia.

variables were assessed based on the WHO STEPwise approach for chronic disease risk factor surveillance.¹⁷ Clinical variables were taken from the patient record review

and physical measurements were conducted. Body weight was measured to an accuracy of 0.1 kg using a portable weight scale machine. Subjects were barefoot and wearing

light indoor clothing. Height was measured in meters, standing upright on a flat surface by a stadiometer. Body mass index (BMI) was calculated as the ratio of weight in kilograms (kg) to the square of height in meters (m²). Systolic blood pressure (SBP) and diastolic blood pressure (DBP) were measured from the left arm at the level of the heart using a mercury-based sphygmomanometer after the subjects take a rest for more than 10 minutes and 30 minutes for those who take hot drinks like coffee. For those study subjects with SBP \geq 140 mm of mercury (mmHg) and DBP \geq 90 mmHg, blood pressure was measured again and finally the average value was taken. Three BSC nurses and two medical interns collected the data with the supervision of two supervisors and principal investigator.

Operational Definition

Hypertension

A study participant was classified as hypertensive if the average SBP/DBP was \geq 140/90 mmHg and/or taking anti-hypertensive drugs.

BMI \geq 25 kg/m²

Overweight or obese.

Critically Ill

Patients who are unable to communicate and abnormal consciousness.

Controlled Fasting Blood Sugar

Fasting blood sugar \leq 130 mg/dl.¹⁸

Uncontrolled Blood Sugar

Fasting blood sugar $>$ 130 mg/dl.¹⁸

Diabetes Patient

Known diabetic patient on follow-up who has a medical record number at JUMC.

Diabetes Duration

The duration of DM was calculated as age at data collection minus age at onset of DM.

Khat Chewer

Participants who chewed khat for 4 or more days in a week.

Non-Chewers

Those who never chewed khat.

Data Quality Management and Statistical Analysis

Before data analysis took place, training was given to the data collectors by the principal investigator on how to use the questionnaire and guideline, objectives of the study on chart review and measurement techniques. A pretest was conducted in 5%¹⁸ of the sample size in Shenen Gibe Hospital and amendment of the questionnaire was done. After analyzing pretest results, necessary corrections and modifications were made. Continuous follow-up and supervision were made by the two supervisors and principal investigator and collected data were reviewed and checked daily for completeness, clarity and consistency. After that, data were entered into Epidata version 3.1 and then exported to SPSS, IBM 20 for analysis. Frequency, proportion and mean were computed to describe the relevant variables. The data output was presented using tables. A logistic regression model was computed to see the association of independent variables and dependent variables. Bivariate analysis was done and those independent variables whose p-values less were than $<$ 0.25 were shifted into the multivariate logistic model. Finally, significance of statistical association was assured or tested using the 95% confidence interval and a p-value of $<$ 0.05 was considered significant in multivariable regression. Model fitness was also checked through the Hosmer and Lameshow test, $p >$ 0.05.

Result

Socio-Demographic Characteristics of Participants

A total of 366 participants were involved in this study. More than half (55.5%, 203) of the respondents were males. The mean age of the respondents was 50.1 ± 14.28 years. Of the respondents, 44.3% were Muslim followed by orthodox 39.6% in religion. Regarding the marital status of the respondents, more than three-quarters (289, 79%) were married followed by single (60, 16.4%) (Table 1).

Clinical and Behavioral Characteristics of Participants

Almost half (54.9%) of study participants were diagnosed with diabetes for less than 5 years. A total of 231 (63.1%) study participants were in the normal category of BMI. Fifty-four (14.8%) participants were active smokers currently, while 244 (66.7%) had never smoked (Table 2).

Table 1 Socio-Demographic Characteristics of Patients with Diabetes Mellitus at JUMC 2019, Jimma, Ethiopia

Variables	Category	Number	Percentage
Sex	Male	203	55.5
	Female	163	44.5
Age	<30 years	43	11.7
	30 to 39 years	30	8.2
	40 to 49 years	87	23.8
	≥50 years	206	56.3
Marital status	Married	289	79
	Single	60	16.4
	Others ^a	17	4.6
Religion	Muslim	162	44.3
	Orthodox	145	39.6
	Protestants	46	12.6
	Others ^b	13	3.6
Educational status	Illiterate	108	29.5
	Primary	167	45.6
	Secondary	44	12
	College and above	47	12.8
Occupational status	Housewife	108	29.5
	Farmer	113	30.9
	Employer	78	21.3
	Private worker	51	13.9
	Others ^c	16	4.4
Residence	Urban	177	48.4
	Rural	189	51.6
Family history of hypertension	Yes	94	25.7
	No	272	74.3
Average monthly income (ETB)	<1000	96	26.2
	1000 to 1999	40	10.9
	2000 to 2999	95	26
	≥3000	135	36.9

Notes: ^aWidowed, divorced. ^bCatholic, Wakefata. ^cRetired, unemployed.

Prevalence of Hypertension Among Diabetic Patients

The overall prevalence of hypertension among diabetic patients was found to be 37.4% (137) [95% CI: 32.8, 42.6]. Out of hypertensive diabetics, most (40%) of them were newly discovered during this study period and the least (7.29%) of them were diagnosed together with DM simultaneously (Figure 2).

Factors Independently Associated with Hypertension

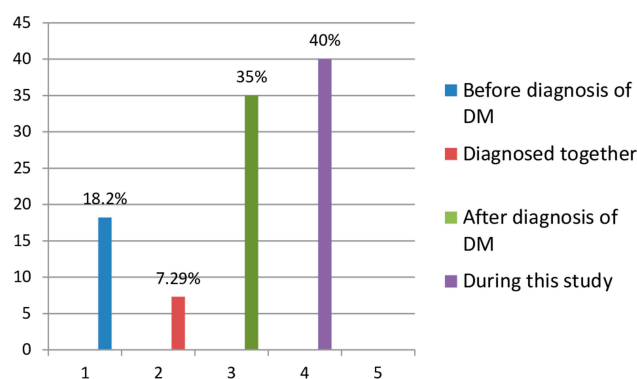
A multivariable logistic regression model was fitted to identify factors independently associated with hypertension

Table 2 Clinical and Behavioral Characteristics of Patients with Diabetes Mellitus at JUMC 2019, Jimma, Ethiopia

Variables	Category	Number	Percentage
Type of DM	1	70	19.1
	2	296	80.9
Duration of DM	<5 years	201	54.9
	≥5 years	165	45.1
Hypertension	Yes	137	37.4
	No	229	62.6
Treatment regimen	Noninsulin	244	66.7
	Insulin	99	27
	Both	23	6.3
BMI (kg/m ²)	18.5 to 24.9	231	63.1
	<18.5	30	8.2
	≥25	84	23
Alcohol intake	Current	44	12
	Former	31	8.5
	Never	291	79.5
Smoking	Current	54	14.8
	Former	68	18.6
	Never	244	66.7
Physical exercise	Active	179	48.9
	Inactive	187	51.1
Other comorbid disease ^a	Yes	42	11.5
	No	324	88.5
Fasting blood sugar (mg/dl)	<130	263	71.9
	≥130	103	28.1
Khat chewing	Yes	157	42.8
	No	209	57.1

Notes: ^a24 chronic kidney disease, 9 congestive heart failure, 5 asthma, 4 cancer.

among DM patients at $p < 0.05$. On bivariate evaluation, 10 variables showed evidence of some association with the outcome at a p -value < 0.25 , hence were included in the multivariate logistic regression analysis. These variables include

**Figure 2** Prevalence rate of HTN based on the time it was diagnosed.

educational level, age, duration of diabetes, physical inactivity, smoking, type of DM, family history of hypertension, khat chewing, BMI ≥ 25 kg/m² and treatment regimen. The Hosmer and Lemeshow goodness of fit test gave a p-value of 0.145, indicating evidence of fitness of the model.

From those variables, age of participant was one of the independent factors in predicting hypertension. Participants of age ≥ 50 years were 4.57 times more likely to develop hypertension compared to patients younger than 30 years [AOR = 4.57; 95% CI: 1.40, 16.4, $p = 0.012$] controlling for all other factors in the model. The other factor identified was BMI; clients whose BMI was ≥ 25 kg/m² were 3.11 times more likely to develop hypertension compared to patients with those normal BMI [AOR = 3.11; 95% CI: 1.58, 6.12, $p = 0.001$]

controlling for all other factors in the model. Finally, diabetic patients who were khat chewers were 19.3 times more likely to develop hypertension as compared with non-chewers [AOR = 19.3; 95% CI: 10.26, 36.44, $p < 0.001$] provided other factors remain the same (Table 3).

Discussion

The overall prevalence of hypertension among diabetic patients was found to be 37.4% [95% CI: 32.8, 42.6]. This result was in line with several studies conducted so far. Accordingly, studies conducted in Pakistan 40.45%,¹⁹ 38% in Bahrain,²⁰ Taiwan 39%²¹ and Jos, Nigeria 35%.²² However, the finding of the current study is lower than a study conducted in Botswana 61.2%,²³ 85.6% in Benghazi,

Table 3 Multivariate Logistic Regression Analysis of Factors Associated with Hypertension Among Diabetes Patients in JUMC, 2019

Variables	Category	HTN		Bivariate Analysis		Multivariate Analysis	
		Yes	No	P-value	COR (95% CI)	P-value	AOR (95% CI)
Age (years)	<30	5	39				
	30 to 39	7	23	0.178	2.37 [0.67, 8.35]	0.226	*
	40 to 49	26	61	0.023	3.32 [1.17, 9.388]	0.082	*
	≥ 50	99	106	0.00	7.28 [2.76, 19.226]	0.012 ^a	4.79 [1.4, 16.4]
Educational level	Illiterate	49	59	0.072	1.95 [0.942, 4.066]	0.088	*
	Primary	60	107	0.435	1.32 [0.65, 2.66]	0.118	*
	Secondary	14	30	0.834	1.1 [0.451, 2.68]	0.111	*
	College and above	14	33				
Type of DM	1	12	58				
	2	125	171	0.00	3.53 [1.82, 6.85]	0.197	*
Smoking	Current	20	47	0.392	0.77 [0.429, 1.39]	0.587	*
	Former	35	33	0.019	1.927 [1.116, 3.33]	0.138	*
	Never	82	149				
Family history of HTN	Yes	43	51	0.054	1.59 [0.991, 2.57]	0.124	*
	No	94	178				
Physical exercise	Active	56	123				
	Inactive	81	106	0.018	1.678 [1.094, 2.58]	0.999	*
Khat chewing	No	29	180				
	Yes	49	108	≤ 0.01	13.6 [8.1, 22.95]	≤ 0.01 ^a	19.34 [10.26, 36.44]
BMI (kg/m ²)	18.5 to 24.9	71	153				
	<18.5	9	18	0.863	1.07 [0.461, 2.516]	0.487	*
	≥ 25	57	55	0.001	2.233 [1.40, 3.55]	0.001 ^a	3.11 [1.58, 6.12]
Duration of DM (years)	<5	65	136				
	≥ 5	72	93	0.027	1.62 [1.057, 2.48]	0.275	*
Treatment regimen	Insulin	31	68				
	Noninsulin	94	150	0.209	1.375 [0.836, 2.26]	0.894	*
	Both	12	11	0.064	2.393 [0.95, 6.01]	0.635	*

Notes: ^aValue statistically significant. *Value not statistically significant. AOR, adjusted odds ratio; COR, crude odds ratio; CI, confidence interval; |, reference.

Libya,²⁴ 70.4% in Morocco,²⁵ in Jordan 76%²⁶ and 89.6% in Iraq 89.6%.²⁷ The possible reason for such discrepancy might be due to differences in study population used, socio-demographic characteristics, study settings, study design, the habit of visits to health setups and difference in lifestyle of study participants.

In contrast, the finding of the current study is higher than a study conducted in Southern Ethiopia at Sidama zone which reported 18.8%,²⁸ 29% in Turkey²⁹ and 25.6% in India.³⁰ The possible reasons for difference with our finding might be due to differences in socio-demographic, study design, type of study population, sample size variation and/or awareness differences.

Our study showed that age ≥ 50 years was independently associated with HTN among diabetic patients. This report is in line with the previous studies.^{23,24,27} This might be due to aging being generally associated with a decline in various physiological functions and non-communicable diseases including HTN. Furthermore, increasing age has also been linked with a higher incidence of disease.^{31,32}

In addition, our study showed that patients with higher BMI (≥ 25 kg/m²) have a higher risk of developing hypertension than ones with normal BMI. This finding agreed with the findings of previous studies.^{23,25,27} The possible explanation for this is excess weight gain leads to enhanced cardiovascular risk, endothelial dysfunction, inflammation, hemodynamic changes, and atherosclerosis.³³ In addition, when an individual becomes overweight he/she will have insulin resistance, excess bad cholesterol in blood vessels and this makes narrow blood vessels, and progressively the person develops HTN. Besides, as BMI levels increase, the risk of chronic diseases increases including hypertension.^{34,35}

Finally, our study indicated that hypertension is associated with khat (*Catha edulis*) chewing. This result is consistent with prior studies.^{36,39} The possible reason might be cathinone, which is the main active ingredient in khat leaves, releases noradrenaline, which might have a sustained effect as a peripheral vasoconstrictor among regular khat chewers.^{38,40}

Limitation of the Study

The cross-sectional design of this study was unable to identify a causal relationship. Since the study was hospital based, it may not be representative of the community and some questions were exposed for recall bias. Finally, we did not include concomitant medications.

Conclusion

The study found that a majority of diabetes patients suffer from coexisting hypertension. So active search for early detection of hypertension and related cardiovascular risk factors should be an important part of diabetes follow-up. Furthermore, the study pointed out that BMI ≥ 25 kg/m², khat chewing and older age were associated with hypertension coexisting with DM, which may be used in tailoring management of hypertension among diabetics.

Abbreviations

AOR, adjusted odds ratio; BMI, body mass index; BSC, Bachelor of Science; CI, confidence interval; COR, crude odds ratio; DBP, diastolic blood pressure; DM, diabetes mellitus; ETB, Ethiopian birr; FBS, fasting blood sugar; HTN, hypertension; JUMC, Jimma University Medical Center; mmHg, millimeter of mercury; SBP, systolic blood pressure; WHO, World Health Organization.

Ethical Consideration

The study approved and ethical clearance was obtained from Jimma University institutional review board. Official letter of permission was obtained from Jimma Institute of Health Ethical review board and given to Jimma University Medical Center director office to conduct the study. Then selected respondents were well informed about the purpose, benefit and method of the study. Then information was collected after written consent from each participant was obtained. Information was recorded anonymously and confidentiality and beneficence were assured throughout the study period.

Acknowledgment

We would like to thank Jimma University for funding this study and JMC staff for their cooperation while conducting this study. Also, we would like to convey heartfelt gratitude for the study participants for their kind and unlimited cooperation, support and participation in the study.

Disclosure

There are no conflicts of interest.

References

1. WHO A. *Global Brief on Hypertension*. Silent killer, global public health crisis; 2013.

2. Kotchen TA. Hypertension control: trends, approaches, and goals. *Hypertension*. 2007;49(1):19–20. doi:10.1161/01.HYP.0000250394.05703.06
3. Lopez-Jaramillo P, Lopez-Lopez J, Lopez-Lopez C, Rodriguez-Alvarez MI. The goal of blood pressure in the hypertensive patient with diabetes is defined: now the challenge is go from recommendations to practice. *Diabetol Metab Syndr*. 2014;6(1):31. doi:10.1186/1758-5996-6-31
4. Paul B, Sapra B, Maheshwari S, Goyal R. Role of losartan therapy in the management of diabetic hypertension. *J Assoc Physicians India*. 2000;48(5):514–518.
5. Mendis S. Challenges for the management of hypertension in low-resource settings. *Ethn Dis*. 2003;13(2 Suppl 2):S67–70.
6. Kahya NE, Harman E, Dolek D, et al. Rate of blood pressure control and antihypertensive treatment approaches in diabetic patients with hypertension. *Turk Kardiyol Dern Ars*. 2014;42(8):7.
7. Geneva W. *Global Health Risks: Mortality and Burden of Disease Attributable to Selected Major Risks*. Geneva: World Health Organization; 2009.
8. World Health Organization. *Regional Office for Southeast Asia*. Hypertension fact sheet.
9. Katon WJ, Rutter C, Simon G, et al. The association of comorbid depression with mortality in patients with type 2 diabetes. *Diabetes Care*. 2005;28(11):2668–2686. doi:10.2337/diacare.28.11.2668
10. Aroda VR, Knowler WC, Crandall JP, et al. Metformin for diabetes prevention: insights gained from the diabetes prevention program/diabetes prevention program outcomes study. *Diabetologia*. 2017;60(9):1601–1611. doi:10.1007/s00125-017-4361-9
11. WHO. *A Global Brief on Hypertension*. World Health Organization Press; 2013.
12. Emdin CA, Rahimi K, Neal B, Callender T, Perkovic V, Patel A. Blood pressure lowering in type 2 diabetes: a systematic review and meta-analysis. *JAMA*. 2015;313(6):603–615. doi:10.1001/jama.2014.18574
13. Prospective Diabetes Study Group UK, United Kingdom Prospective Diabetes Study Group. Tight blood pressure control and risk of macrovascular and microvascular complications in type 2 diabetes: UKPDS 38. *BMJ*. 1998;317(7160):703–713. doi:10.1136/bmj.317.7160.703
14. Alwan A. *Global Status Report on Noncommunicable Diseases 2010*. World Health Organization; 2011.
15. Koly KN, Biswas T, Islam A. Increasing prevalence of hypertension in Bangladesh: a review. *Cardiovasc J*. 2015;8(1):59–64. doi:10.3329/cardio.v8i1.24771
16. Hendriks ME, Wit FWNM, Roos MTL, et al. Hypertension in sub-Saharan Africa: cross-sectional surveys in four rural and urban communities. *PLoS One*. 2012;7(3):e32638. doi:10.1371/journal.pone.0032638
17. Riley L, Guthold R, Cowan M, et al. The World Health Organization STEPwise approach to non-communicable disease risk-factor surveillance: methods, challenges, and opportunities. *Am J Public Health*. 2016;106(1):74–78. doi:10.2105/AJPH.2015.302962
18. Jansson SP, Svärdsudd K, Andersson DK. Effects of fasting blood glucose levels and blood pressure and treatment of diabetes and hypertension on the incidence of cardiovascular disease: a study of 740 patients with incident Type 2 diabetes with up to 30 years' follow-up. *Diabetic Med*. 2014;31(9):1055–1063. doi:10.1111/dme.12514
19. Arshad AR. Control of blood pressure in hypertensive patients with diabetes mellitus type 2. *Pak Hear J*. 2014;47(02):78–83.
20. Al-mahroos F, Al-roomi K, Mckeigue PM. Relation of high blood pressure to glucose intolerance, plasma lipids and educational status in an Arabian Gulf population. *Int J Epidemiol*. 2000;29(1):71–76. doi:10.1093/ije/29.1.71
21. Tseng CH. Higher risk of hypertension in indigenous type 2 diabetic patients in Taiwan. *J Hypertens*. 2006;24(9):1817–1821. doi:10.1097/01.hjh.0000242406.76085.c4
22. Chuhwak EK, Puepet FH, Okeahialam BN, Ohwovoriole AE. Hypertension and Diabetes in Jos, Nigeria. *Diabetes Int*. 2002;12:25–26.
23. Mengesha AY. Hypertension and related risk factors in type 2 diabetes mellitus (DM) patients in Gaborone City Council (GCC) clinics, Gaborone. *Afr Heal Sci*. 2007;7(4):244–245.
24. Nouh F, Omar M, Younis M. Prevalence of Hypertension among Diabetic Patients in Benghazi: A Study of Associated Factors. *Asian J Med Heal*. 2017;6(4):1–11. doi:10.9734/AJMAH/2017/35830
25. Berraho M, Youness E. Achhab, Hypertension and type 2 diabetes: a cross-sectional study in Morocco (EPIDIAM Study) Mohamed. *Pan Afr Med J*. 2012;11.
26. Alqudah BM, Mahmoud H, Alhusamia S, Sh A, Al L, Alawneh ZE. Prevalence of hypertension among diabetic type 2 patients attending medical clinic at Prince Hashem bin Abdullah Hospital in Aqaba. *Indian J Med Res Pharm Sci*. 2017;4:(June):47–54.
27. Mansour AA. Prevalence and control of hypertension in Iraqi diabetic patients: a prospective cohort study. *Open Cardiovasc Med J*. 2012;1:68–71. doi:10.2174/1874192401206010068
28. Giday A, Wolde M, Yihdego D. Hypertension, obesity and central obesity in diabetics and non-diabetics in Southern Ethiopia. *Ethiop J Health Dev*. 2010;24.
29. Satman I, Yilmaz T. Population-based study of diabetes and risk characteristics in Turkey. *Diabetes Care*. 2002;25(9):1551–1556. doi:10.2337/diacare.25.9.1551
30. Venugopal K, Mohammed MZ. Prevalence of hypertension in type-2 diabetes mellitus. *J Heal Res*. 2014;1:4.
31. Satman I, Omer B, Tutuncu Y. Twelve-year trends in the prevalence and risk factors of diabetes and prediabetes in Turkish adults. *Eur J Epidemiol*. 2013;28(2):169–180. doi:10.1007/s10654-013-9771-5
32. Colosia AD, Roberto P, Shahnaz K. Prevalence of hypertension and obesity in patients with type 2 diabetes mellitus in observational studies: A systematic literature review. *Diabetes Metab Syndr Obes*. 2013;6(1):327–338. doi:10.2147/DMSO.S51325
33. Csige I, Ujvárosy D, Szabó Z, et al. The impact of obesity on the cardiovascular system. *J Diabetes Res*. 2018;2018.
34. Brown CD, Higgins M, Donato KA, et al. Body mass index and the prevalence of hypertension and dyslipidemia. *Obes Res*. 2000;8(9):605–619. doi:10.1038/oby.2000.79
35. Velásquez-Rodríguez CM, Velásquez-Villa M, Gómez-Ocampo L, Bermúdez-Cardona J. Abdominal obesity and low physical activity are associated with insulin resistance in overweight adolescents: a cross-sectional study. *BMC Pediatr*. 2014;14(1):258. doi:10.1186/1471-2431-14-258
36. Al-Habori M. The potential adverse effects of habitual use of Catha edulis (khat). *Expert Opin Drug Saf*. 2005;4(6):1145–1154. doi:10.1517/14740338.4.6.1145
37. Hassan NA, Gunaid AA, Murray-Lyon IM. Khat (Catha edulis): health aspects of Khat chewing. *East Mediterr Health J*. 2007;13(3):706–718.
38. Getahun W, Gedif T, Tesfaye F. Regular Khat (Catha edulis) chewing is associated with elevated diastolic blood pressure among adults in Butajira, Ethiopia: A comparative study. *BMC Public Heal*. 2010;10:4–11.
39. Toennes SW, Harder S, Scharmm M, Niess C, Kauert GF. Pharmacokinetics of Cathinone and norephedrine after the chewing of Khat leaves. *Br J Clin Pharmacol*. 2003;56(1):125–130. doi:10.1046/j.1365-2125.2003.01834.x
40. Hassan NA, Gunaid AA, Abdo-Rabbo AA, Abdel-Kader ZY. The effect of Qat chewing on blood pressure and heart rate in healthy volunteers. *Trop Doct*. 2000;30(2):107–108. doi:10.1177/004947550003000219

Diabetes, Metabolic Syndrome and Obesity: Targets and Therapy

Dovepress

Publish your work in this journal

Diabetes, Metabolic Syndrome and Obesity: Targets and Therapy is an international, peer-reviewed open-access journal committed to the rapid publication of the latest laboratory and clinical findings in the fields of diabetes, metabolic syndrome and obesity research. Original research, review, case reports, hypothesis formation, expert opinion

and commentaries are all considered for publication. The manuscript management system is completely online and includes a very quick and fair peer-review system, which is all easy to use. Visit <http://www.dovepress.com/testimonials.php> to read real quotes from published authors.

Submit your manuscript here: <https://www.dovepress.com/diabetes-metabolic-syndrome-and-obesity-targets-and-therapy-journal>