

Preoperative Inversed Albumin-to-Globulin Ratio Predicts Worse Oncologic Prognosis Following Curative Hepatectomy for Hepatocellular Carcinoma

This article was published in the following Dove Press journal:
Cancer Management and Research

Cheng-Cheng Zhang,^{1,*} Cheng-Wu Zhang,^{2,*} Hao Xing,^{3,*} Yu Wang,^{4,*} Lei Liang,^{5,*} Yong-Kang Diao,^{2,5,*} Ting-Hao Chen,⁶ Wan Yee Lau,^{3,7} Ping Bie,⁸ Zhi-Yu Chen,¹ Tian Yang^{1,3}

¹Department of Hepatobiliary Surgery, Southwest Hospital, Third Military Medical University (Army Medical University), Chongqing, China; ²Department of Hepatobiliary, Pancreatic and Minimal Invasive Surgery, Zhejiang Provincial People's Hospital, People's Hospital of Hangzhou Medical College, Zhejiang, China; ³Department of Hepatobiliary Surgery, Eastern Hepatobiliary Surgery Hospital, Second Military Medical University (Navy Medical University), Shanghai, China; ⁴Department of Hepatobiliary Surgery, Chongqing University Cancer Hospital, Chongqing, China; ⁵Key Laboratory of Tumor Molecular Diagnosis and Individualized Medicine of Zhejiang Province, Hangzhou, China; ⁶Department of General Surgery, Ziyang First People's Hospital, Sichuan, China; ⁷Faculty of Medicine, The Chinese University of Hong Kong, Shatin, New Territories, Hong Kong SAR, China; ⁸Department of Hepatobiliary, The Third Affiliated Hospital, Chongqing Medical University, Chongqing, China

*These authors contributed equally to this work

Background: A normal albumin-to-globulin ratio (NAGR) in serum is greater than 1. Inversed albumin-to-globulin ratio (IAGR < 1) indicates poor synthetic liver function or malnutrition. The aim of this study is to evaluate whether preoperative IAGR was associated with worse oncologic survival after hepatectomy for hepatocellular carcinoma (HCC).

Patients and Methods: Patients who underwent curative hepatectomy for HCC between 2009 and 2016 in four centers were divided into the IAGR and NAGR groups based on their preoperative levels, and their clinical characteristics and long-term survival outcomes were compared. Univariable and multivariable Cox regression analyses were performed to identify risk factors of overall survival (OS) and recurrence-free survival (RFS).

Results: Of 693 enrolled patients, 136 (19.6%) were in the IAGR group. Their 5-year OS and RFS rates were 31.6% and 21.3%, respectively, which were significantly worse than the NAGR group (43.4% and 28.7%, both $P < 0.001$). The area under the receiver operating characteristic curves in predicting 5-year OS and RFS using the albumin-to-globulin ratio were 0.68 and 0.67, respectively, which were significantly higher than albumin (0.60 and 0.59), globulin (0.56 and 0.57), Child-Pugh grading (0.61 and 0.60), Model for End-Stage Liver Disease Score (0.59 and 0.58), and Albumin-Bilirubin grading (0.64 and 0.63). Multivariable analyses identified that preoperative IAGR was independently associated with worse OS (HR: 1.444, 95% confidence interval (CI): 1.125–1.854, $P = 0.004$) and RFS (HR: 1.463, 95% CI: 1.159–1.848, $P = 0.001$).

Conclusion: Preoperative IAGR was useful in predicting worse OS and RFS in patients who underwent curative hepatectomy for HCC.

Keywords: hepatocellular carcinoma, hepatectomy, albumin, globulin, survival, recurrence

Correspondence: Zhi-Yu Chen
Department of Hepatobiliary Surgery,
Southwest Hospital, Third Military
Medical University (Army Medical
University), No. 30, Gaotanyan Street,
Chongqing 400038, China
Email chenzhiyu_umn@163.com

Tian Yang
Department of Hepatobiliary Surgery,
Eastern Hepatobiliary Surgery Hospital,
Second Military Medical University (Navy
Medical University), No. 225, Changhai
Road, Shanghai 200438, China
Email yangtian6666@hotmail.com

Introduction

Hepatocellular carcinoma (HCC) has high morbidity and poor survival rates all over the world.¹ Hepatectomy is the first-line treatment aiming at cure in selected patients.^{2,3} However, a high post-hepatectomy tumor recurrence rate limits the long-term prognosis.^{4,5} Most studies reported 5-year HCC recurrence rates of 60% to 70% after curative resection.^{5,6} A better understanding of perioperative risk factors associated with tumor recurrence and long-term survival helps in surgical decision-making, although whether adjuvant therapy can improve long-term oncological prognosis following hepatectomy for HCC is still debatable.

Liver function tests used in clinical practice routinely include serum albumin, globulin, bilirubin and transaminases levels.^{7,8} A low serum level of albumin (normal range 35–50 g/L) reflects either poor nutritional status of the patient or poor synthetic function of the liver. A high level of globulin (normal range 20–35 g/L) indicates immune system overactivity, which is often found in patients with chronic inflammatory diseases such as chronic hepatitis.⁸ A surrogate index by combining albumin with globulin to form the albumin-to-globulin ratio is often used clinically to assess liver function.⁹ The normal threshold value of the albumin-to-globulin ratio is 1.0 to 2.0. Underproduction of albumin or overproduction of globulin leads to decrease of the albumin-to-globulin ratio. An inversed albumin-to-globulin ratio (IAGR, <1.0) is often found in patients with severe inflammatory liver diseases or cirrhosis.^{10,11} Moreover, the albumin-to-globulin ratio has also been demonstrated to correlate with prognosis of patients with various diseases, especially with malignant tumors such as colorectal cancer,^{12–14} urothelial carcinoma,^{15–19} gastric cancer,^{20–23} and lung cancer.^{24–26} The correlation between preoperative albumin-to-globulin ratio with long-term prognosis in patients treated with hepatectomy for HCC has only been reported in 3 single-center studies with small sample sizes.^{27–29} Furthermore, two of these studies only performed prognostic analyses on overall survival but not on recurrence-free survival.^{27,29}

Based on a multicenter database with more than 10 years of follow-up, the present study aimed to identify whether preoperative albumin-to-globulin ratio independently predicted long-term overall survival and recurrence-free survival outcomes in patients with HCC after partial hepatectomy with curative-intent.

Patients and Methods

Patient Enrollment

Patients with HCC who underwent partial hepatectomy with curative intent from January 2009 to December 2016 at four Chinese medical centers (Southwest Hospital, Zhejiang Provincial People's Hospital, Eastern Hepatobiliary Surgery Hospital, and Chongqing University Cancer Hospital) were identified, and their clinical data were retrospectively analyzed. Curative hepatectomy was defined as complete resection of all microscopic and macroscopic HCC tumors with microscopically clear resection margins in the surgical specimens (R0 resection). The exclusion criteria included patients:

(1) less than 18 years old; (2) with chronic renal dysfunction which can lead to abnormalities in serum globulin; (3) with recurrent HCC, R1 (microscopically positive) or R2 resection (macroscopically positive); (4) who died within 30 days of operation; (5) lost to follow-up within 90 days of surgery; and (6) who had missing data on important prognostic variables. Informed consent was obtained from all enrolled patients to use their data for clinical research, either on hospital admission or during routine preoperative interviews. The study was conducted in accordance with the Declaration of Helsinki. The study was approved by the Institutional Review Board of the Eastern Hepatobiliary Surgery Hospital of Shanghai, China (No: EHBHKY2019-K-005) and individual consent for this retrospective analysis was waived.

Clinicopathological and Operative Variables

The following clinical variables were reviewed: age, sex, American Society of Anesthesiologists (ASA) score, hepatitis B virus (HBV) or hepatitis C virus (HCV) infection, cirrhosis, portal hypertension, preoperative hemoglobin, platelet, international normalized ratio (INR), creatinine, alpha-fetoprotein (AFP), Child-Pugh grading, Model for End-Stage Liver Disease (MELD) Score, and Albumin-Bilirubin (ALBI) grading; and liver function tests, which included bilirubin, alanine aminotransferase (ALT), aspartate transaminase (AST), albumin, and globulin levels. All laboratory tests were performed within one week prior to hepatectomy. Cirrhosis was confirmed by histopathological examination. Portal hypertension was defined when there was presence of esophageal varices or splenomegaly with a low platelet count ($<100 \times 10^9/L$). Pathological variables of HCC included maximum tumor size, tumor number, macrovascular or microvascular invasion, satellite nodules, tumor differentiation and tumor encapsulation. Operative variables included intraoperative blood loss, intraoperative blood transfusion, type of liver resection, and extent of hepatectomy. Major hepatectomy was defined as resection of three or more Couinaud liver segments, and minor hepatectomy as resection of fewer than three segments. Anatomical liver resections were defined by the Brisbane 2000 nomenclature of liver anatomy,³⁰ while non-anatomical liver resection included wedge resection or limited resection.

Follow-Up After Surgery

Patients were regularly followed-up at each medical center after discharge from hospital using a standard protocol for

surveillance of HCC recurrence. The protocol at each of the follow-up visits included a detailed history taking, physical examination, blood tests (liver function and serum AFP level) and radiological examinations using abdominal ultrasonography or magnetic resonance imaging (MRI) or contrast-enhanced computed tomography (CT).³¹ The follow-up visits were conducted once every two months for the first 6 months after surgery, then once every 3 months for the next 18 months, and then once every 6 months subsequently. When recurrence of HCC was suspected, CT/MRI, bone scanning or positron emission tomography-CT were performed as clinically indicated. Tumor recurrence was defined as new appearance of intrahepatic or extrahepatic tumor nodule (s) with typical imaging features consistent with HCC on contrast-enhanced CT or MRI, with or without a rise in serum AFP level. The treatment for patients with tumor recurrence included re-resection, liver transplantation, transcatheter arterial chemoembolization (TACE), local ablation, targeted drug therapy or supportive therapy.

Study Endpoints

The primary endpoint of the study was overall survival (OS) and the secondary endpoint was recurrence-free survival (RFS). OS was calculated from the date of hepatectomy to the date of death, or to the date of last follow-up. RFS was calculated from the date of hepatectomy to the date of diagnosis of tumor recurrence for patients with recurrence, or from the date of operation to the date of death or date of last follow-up for patients without recurrence. All patients were followed-up until death or loss to follow-up until the date this study was censored on December 31, 2019.

Statistical Analysis

The variables were exhibited using frequency and percentage for categorical covariates, and mean \pm standard deviation (SD) or median (range) for continuous covariates. The Pearson's chi-square test was applied for categorical covariates, while the Student *t*-test or Mann-Whitney U-test was adopted for continuous covariates. For laboratory results, the upper and lower limits of the normal values were used to divide patients into the normal or abnormal groups. Patients were divided into two groups using the frequently used 400 μ g/L as the cut-off value for preoperative AFP level. The OS and RFS rates were compared between the IAGR and NAGR groups using the Kaplan-Meier method generated by the Log rank test. A receiver operating characteristic (ROC) analysis was performed to evaluate the power of prediction of 5-year OS and RFS,

and the area under the receiver operating characteristic curve (AUROC) and the 95% confidence intervals (CIs) were calculated. The AUROCs were compared among the laboratory variables and the clinical scores reflecting liver function (including Child-Pugh grading, MELD score and ALBI grading). Only significant variables with a *P* value $<$ 0.1 on univariable analyses were put into multivariate analyses using the Cox proportional hazard model. Hazard ratios (HRs) and their 95% confidence intervals (CIs) were estimated in the univariable and multivariable Cox regression analyses. Statistical analysis was performed using SPSS[®] version 25.0 (IBM, Armonk, New York, USA). *P* values were 2-sided and a *P* value $<$ 0.05 was considered as statistically significant.

Results

Patient Characteristics

With predetermined inclusion criteria, 693 patients were enrolled into this study (Figure 1). There were 610 (88%) males and 83 (12%) females. Using 1.0 as the cut-off value for preoperative albumin-to-globulin ratio taken within one week prior to surgery, patients were divided into the NAGR (n=557, 80.4%) and IAGR (n=136, 19.6%) groups (mean albumin-to-globulin ratio: 1.48 vs 0.89, respectively). The patients' clinical characteristics and operative variables of these two groups are summarized in Table 1. Patients in the IAGR group, when compared with the NAGR group, were significantly older (mean: 53.2 vs 50.7 years), had higher percentages of female (19.1% vs 10.2%), cirrhosis (79.4% vs 68.9%) and portal hypertension (45.6% vs 30.2%), but had worse Child-Pugh grading (grade B: 11.3% vs 3.5%), and larger tumors (mean: 6.7 cm vs 5.9 cm). The laboratory parameters showed significant differences in most variables between the two groups, including hemoglobin, platelet, creatinine, INR, bilirubin, albumin, globulin, ALT, and AST. In addition, the IAGR group had significantly more intraoperative blood loss (median 400 mL vs 300 mL, *P* $<$ 0.001) and a higher percentage of patients receiving intraoperative blood transfusion (26.5% vs 18.0%, *P* = 0.025) than the NAGR group.

Long-Term Oncological Outcomes

The long-term oncological outcomes between the IAGR and NAGR groups are shown in Table 2. The death rate in the IAGR group was significantly higher than the NAGR group (73.5% vs 52.6%, *P* $<$ 0.001). However, the difference in recurrence was not significant (64.7% vs 61.2%, *P* = 0.453). The OS and RFS curves between the two

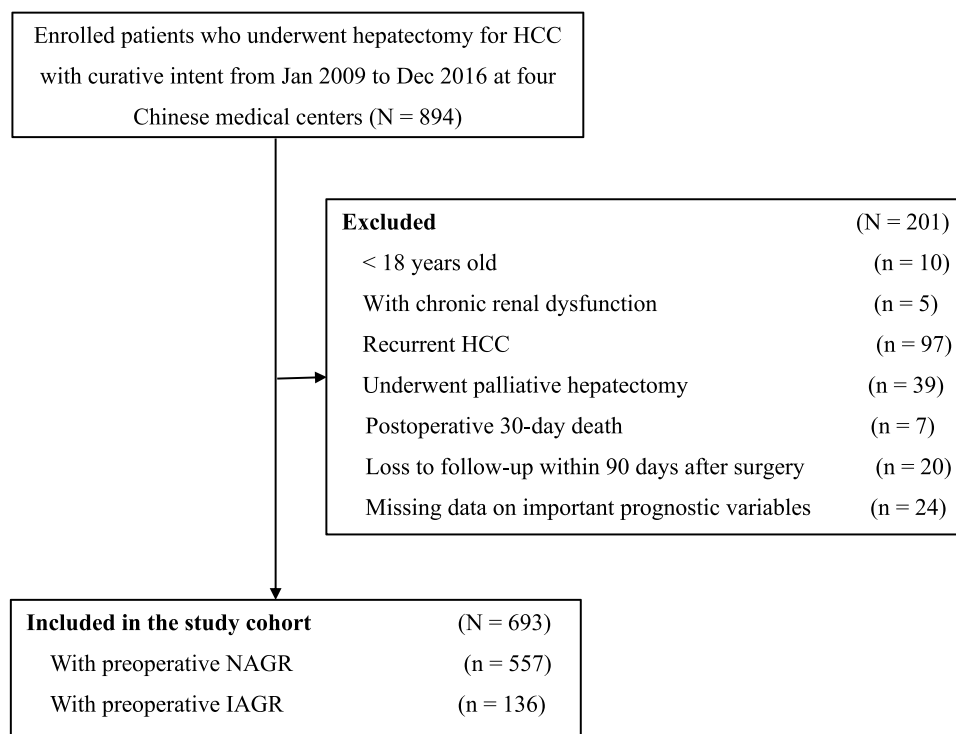


Figure 1 Selection of the study population.

Abbreviations: HCC, hepatocellular carcinoma; IAGR, inversed albumin-to-globulin ratio; NAGR, normal albumin-to-globulin ratio

groups are shown in [Figure 2A](#) and [B](#). The median OS and RFS in the IAGR group were significantly worse in the NAGR group (50.8 vs 61.7 months, and 34.9 vs 45.4 months, both $P < 0.001$). The 5-year OS and RFS rates in the IAGR group were 31.6% and 21.3%, respectively, which were significantly worse than the NAGR group (43.4% and 28.7%, respectively, both $P < 0.001$).

ROC Analysis in Predicting 5-Year OS and RFS

[Table 3](#) shows the ROC analysis in the prediction of 5-year OS and RFS using the various laboratories and clinical variables. The AUROCs for 5-year OS and RFS using the albumin-to-globulin ratio were 0.68 and 0.67, respectively, which were significantly better than the corresponding values using albumin only (0.60 and 0.59), globulin only (0.56 and 0.57), bilirubin only (0.55 and 0.55), Child-Pugh grading (0.61 and 0.60), MELD score (0.59 and 0.58), and ALBI grading (0.64 and 0.63). The best predictor for 5-year OS and RFS was the albumin-to-globulin ratio among all of these variables.

Prognostic Analyses for OS and RFS

The results on univariable and multivariable Cox regression analyses in predicting OS and RFS after curative

hepatectomy for HCC are shown in [Tables 4](#) and [5](#). Multivariate Cox regression analyses demonstrated that IAGR was an independent risk factor in predicting worse OS (HR: 1.444, 95% CI: 1.125–1.854, $P = 0.004$) and RFS (HR: 1.463, 95% CI: 1.159–1.848, $P = 0.001$).

Discussion

The present study was conducted to evaluate the relationship between albumin-to-globulin ratio with long-term survival outcomes after curative hepatectomy in patients with HCC. The albumin-to-globulin ratio combines both albumin and globulin levels to reflect the nutritional and inflammatory status of the patient. The commonly used normal value in clinical practice (<1.0) was used to define an abnormal albumin-to-globulin ratio in this study. This threshold was then used to divide the enrolled patients into the IAGR and NAGR groups. Multivariable analyses revealed that IAGR was significantly associated with worse OS and RFS after curative hepatectomy for HCC. Hepatic surgeons should be alerted to the importance of preoperative albumin-to-globulin ratio in predicting long-term prognosis following HCC resection. In spite of the retrospective nature, the present study has the advantages

Table 1 Comparisons of Clinicopathological and Operative Variables Between the IAGR and NAGR Groups

Variables	Total (N=693)	IAGR Group (N=136)	NAGR Group (N=557)	P value
Age, years*	51.5 ± 11.6	53.2 ± 10.4	50.7 ± 11.3	0.001
Male sex	610 (88.0)	110 (80.9)	500 (89.8)	0.004
ASA score > 2	82 (11.8)	20 (14.7)	62 (11.1)	0.247
HBV (+)	632 (91.2)	127 (93.4)	505 (90.7)	0.316
HCV (+)	38 (5.6)	7 (5.4)	31 (5.7)	0.471
Cirrhosis	492 (71.0)	108 (79.4)	384 (68.9)	0.016
Portal hypertension	230 (33.2)	62 (45.6)	168 (30.2)	0.001
Preoperative hemoglobin, g/L*	142.1 ± 17.3	135.5 ± 20.6	144.2 ± 16.9	< 0.001
Preoperative platelet, 10 ⁹ /L*	126.4 ± 67.1	121.5 ± 68.3	139.2 ± 66.7	0.001
Preoperative INR*	1.09 ± 0.12	1.14 ± 0.13	1.08 ± 0.11	< 0.001
Preoperative creatinine, μmol/L*	73.2 ± 16.8	69.4 ± 14.6	74.1 ± 17.1	0.003
Preoperative bilirubin, μmol/L*	15.0 ± 5.8	16.5 ± 6.3	14.6 ± 5.6	0.002
Preoperative albumin, g/L*	40.9 ± 4.0	37.5 ± 3.5	41.8 ± 3.7	< 0.001
Preoperative globulin, g/L*	30.4 ± 5.1	36.9 ± 4.0	28.7 ± 3.9	< 0.001
Preoperative albumin-to-globulin ratio*	1.39 ± 0.27	0.89 ± 0.09	1.48 ± 0.21	< 0.001
Preoperative ALT, U/L*	43.3 (7.5–467.2)	49.1 (9.7–324.1)	42.7 (7.5–467.2)	0.004
Preoperative AST, U/L*	40.4 (13.3–346.6)	54.8 (16.6–346.6)	38.4 (13.3–273)	< 0.001
Child-Pugh grade, A/B	631/62(91.8/8.2)	120/16(88.7/11.3)	537/20(96.5/3.5)	0.049
MELD score*	6.34 ± 2.13	7.18 ± 2.31	6.15 ± 2.03	< 0.001
ALBI grade*	−2.7 ± 0.36	−2.4 ± 0.33	−2.8 ± 0.32	< 0.001
Preoperative AFP > 400 μg/L	253 (36.5)	49 (36.0)	204 (36.6)	0.897
Maximum tumor size, cm*	6.0 ± 3.9	6.7 ± 4.2	5.9 ± 3.8	0.046
Multiple tumors	153 (22.1)	28 (20.6)	125 (22.4)	0.640
Macrovascular invasion	23 (3.3)	8 (5.9)	15 (2.7)	0.063
Microvascular invasion	353 (50.9)	66 (48.5)	287 (51.5)	0.531
Satellite nodules	162 (23.4)	31 (22.8)	131 (23.5)	0.858
Poor tumor differentiation	551 (79.5)	107 (78.7)	444 (79.7)	0.788
Incomplete tumor encapsulation	405 (58.4)	81 (59.6)	324 (58.2)	0.768
BCLC staging, A/B+C	428/265(61.8/38.2)	68/68 (50/50)	360/197(64.6/35.4)	0.002
Intraoperative blood loss, mL*	300 (30–8000)	400 (50–8000)	300 (30–4600)	< 0.001
Intraoperative blood transfusion	136 (19.6)	36 (26.5)	100 (18.0)	0.025
Major hepatectomy	165 (23.8)	31 (22.8)	134 (24.1)	0.756
Anatomical resection	497 (71.7)	105 (77.2)	392 (70.4)	0.113
Resection margin < 1 cm	246 (35.5)	61 (44.9)	185 (33.2)	0.011

Note: *Values are mean ± standard deviation or median (range) unless otherwise indicated.

Abbreviations: AFP, alpha-fetoprotein; ALBI, Albumin-Bilirubin; ALT, alanine aminotransferase; ASA, American Society of Anesthesiologists; AST, aspartate transaminase; BCLC, Barcelona Clinic Liver Cancer; HBV, hepatitis B virus; HCV, hepatitis C virus; IAGR, inversed albumin-to-globulin ratio; INR, international normalized ratio; MELD, Model for End-Stage Liver Disease; NAGR, normal albumin-to-globulin ratio.

of being a multicenter study using a large sample size with adequately long periods of follow-up, and carrying out analysis on multiple prognostic risk factors.

Serum albumin is commonly used in clinical practice as an indicator of liver function and nutritional status. It forms an important component in many clinical scores which are designed to reflect liver function, such as the Child-Pugh grading and the ALBI grading.^{32–34} When compared with albumin alone, the albumin-to-globulin ratio not only reflects liver function and nutritional status but also predicts the severity of chronic inflammation.⁹

As HCCs commonly have a background of chronic hepatitis (91.2% HBV infection and 5.6% HCV infection in the present study), or even liver cirrhosis (71.0% in the present study), and many studies have demonstrated that the severity of chronic hepatitis is associated with long-term survival outcomes and recurrence after HCC resection,^{35–38} the albumin-to-globulin ratio should be a more sensitive and specific test in predicting long-term prognosis than albumin only. In this study, the AUROCs in predicting 5-year OS and RFS were 0.68 and 0.67 using the albumin-to-globulin ratio, respectively,

Table 2 Comparisons of Long-Term Oncologic Outcomes Between the IAGR and NAGR Groups

N (%)	Total (N=693)	IAGR Group (N=136)	NAGR Group (N=557)	P value
Period of follow-up, months*	47.6 ± 35.5	42.9 ± 33.9	49.2 ± 35.9	0.131
Death during the follow-up	393 (56.7)	100 (73.5)	293 (52.6)	< 0.001
Recurrence during the follow-up	429 (61.9)	88 (64.7)	341 (61.2)	0.453
Initial recurrence site				0.076
Intrahepatic only	338 (78.6)	68 (77.1)	270 (79.2)	
Extrahepatic only	36 (8.7)	6 (6.3)	32 (9.3)	
Intrahepatic and Extrahepatic	55 (12.7)	14 (16.6)	39 (11.5)	
OS, months**	59.6 (56.9–62.2)	50.8 (44.8–56.7)	61.7 (58.8–64.6)	< 0.001
1-year OS rate, %	93.9	89.7	95.0	
3-year OS rate, %	71.6	60.3	74.3	
5-year OS rate, %	41.1	31.6	43.4	
RFS, months**	43.3 (40.7–45.9)	34.9 (29.3–40.5)	45.4 (42.5–48.3)	< 0.001
1-year RFS rate, %	77.3	67.0	79.9	
3-year RFS rate, %	53.0	41.2	55.8	
5-year RFS rate, %	27.3	21.3	28.7	

Notes: *Values are mean ± standard deviation. **Values are median and 95% confidence interval.

Abbreviations: IAGR, inversed albumin-to-globulin ratio; NAGR, normal albumin-to-globulin ratio; OS, overall survival; RFS, recurrence-free survival.

which were significantly better than using albumin only (0.60 and 0.59). Furthermore, the albumin-to-globulin ratio predicted even significantly better than the commonly used clinical scoring systems, including the Child-Pugh grading (0.61 and 0.60), the MELD scoring (0.59 and 0.58, respectively), and the ALBI grading (0.64 and 0.63, respectively). Thus, in patients with HCC with a background of chronic hepatitis, the performance of the albumin-to-globulin ratio in predicting prognosis after liver resection was the best among the existing liver functional scoring systems in the present study.

To avoid overlapping of variables on univariable and multivariable analyses of OS and RFS, only the albumin-to-globulin ratio, bilirubin, ALT, and AST were put into the final model in the analysis. The following variables, including albumin, globulin, Child-Pugh grading, MELD scoring and ALBI grading (these scores contain albumin and/or bilirubin), were not put into the final model. The albumin-to-globulin ratio was shown to be an independent predictive factor of OS and RFS. Patients with resectable HCC but with an albumin-to-globulin ratio of less than 1.0 are predicted to have bad prognosis after surgery. If the surgical risk in these patients is high, or when hepatectomy is expected to be technically difficult, surgeons should be very cautious in recommending liver resection to such patients. A safer treatment modality in the form of local ablation or TACE should be considered.

In the present study, there were significant differences between the IAGR and NAGR groups of patients. The use of propensity score matching to examine the relationship between the preoperative albumin-to-globulin ratio and long-term oncologic outcomes for the purpose of balancing baseline characteristics before comparative analyses between the two groups may not be appropriate as this can lead to increase in selection biases between the two groups. As a consequence, the classical statistical approaches using univariable and multivariable Cox regression analyses were adopted in this study to find out whether IAGR was independently associated with worse OS and RFS following curative hepatectomy for HCC, while adjusting for the other prognostic risk factors.

In addition to the albumin-to-globulin ratio, a number of other independent risk factors for worse OS and RFS were found in the present study. These risk factors included portal hypertension, preoperative AFP level >400 µg/L, maximum tumor size >5.0 cm, multiple tumors, macroscopic and microscopic vascular invasion, satellite nodules, and intraoperative blood transfusion. All these risk factors have been reported previously.^{31,37,39–41}

The present study has limitations. First, HBV infection is the predominant etiology of HCC in this study from China, while the predominant etiology in most western countries and Japan is hepatitis C infection. Thus, the results from this study may not be applicable to HCC with other etiologies. Second, the retrospective study

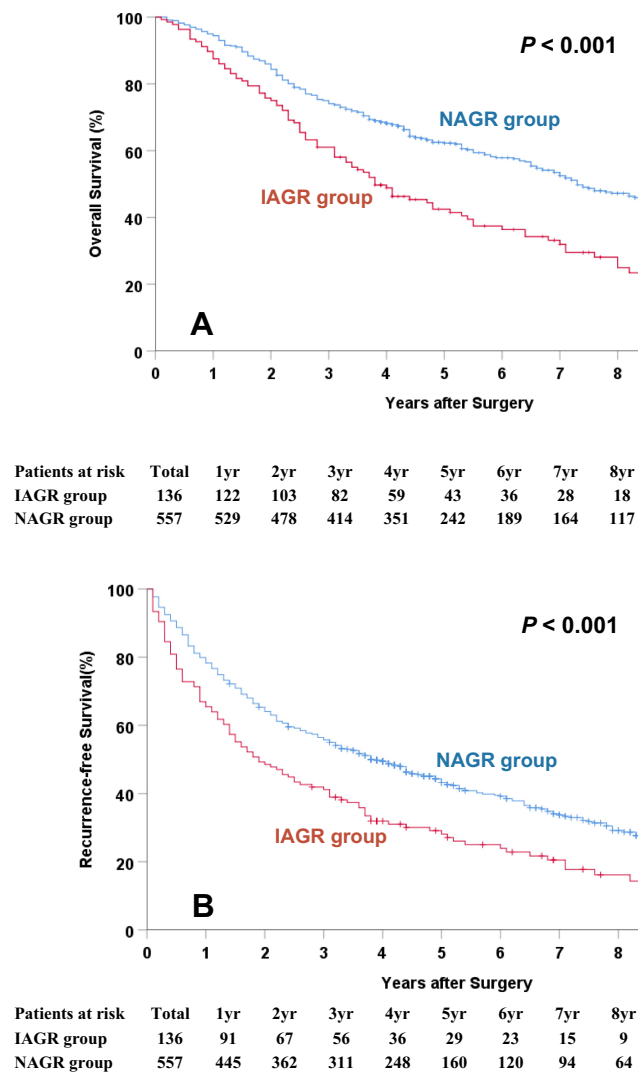


Figure 2 Overall survival (A) and recurrence-free survival (B) curves comparisons between the IAGR and NAGR groups. **Abbreviations:** IAGR, inversed albumin-to-globulin ratio; NAGR, normal albumin-to-globulin ratio.

with data collected from multi-centers has inherent defects. Third, some inflammatory and nutritional factors, such as neutrophil-lymphocyte ratio, platelet-lymphocyte ratio and sarcopenia, and other variables which can reflect liver functional reserves such as indocyanine green test and hepatic venous pressure gradient were not evaluated in the current study.⁴²⁻⁴⁷ For example, indocyanine green test has not always been carried out as a routine test in all participating hospitals as it did not cover by local Medicare in almost all Chinese provinces. More studies should be conducted in the future to incorporate these variables. Fourth, this study divided patients into the IAGR and NAGR groups by the commonly used value in clinical practice i.e. 1.0, as the cut-off value of the albumin-to-globulin ratio. Further studies should be

carried out to identify the optimal threshold to separate the two groups of patients. In addition, further studies should be conducted to find out whether the albumin-to-globulin ratio can improve the commonly used Child-Pugh grading, MELD scoring and ALBI grading systems in assessing liver function, and in predicting outcomes after hepatectomy for HCC. Fifth, even indocyanine green (ICG) test was recognized as one of the most reliable prognostic factors for tolerance of hepatic surgery, routinely administrated in every patient especially in past years was not done. This variable was missing in characteristics in this study.

In conclusion, this multicenter study identified that preoperative IAGR was independently associated with worse OS and RFS following curative hepatectomy for HCC. This

Table 3 Comparisons of ROC Analysis for the Prediction of Postoperative 5-Year Overall Survival and Recurrence-Free Survival

Preoperative Laboratory Indexes or Clinical Scores Reflecting Liver Function	AUROC for 5-Year OS	95% CI	AUROC for 5-Year RFS	95% CI
Albumin	0.60	0.54–0.64	0.59	0.55–0.63
Globulin	0.56	0.52–0.61	0.57	0.51–0.62
Bilirubin	0.55	0.52–0.60	0.55	0.53–0.61
ALT	0.54	0.52–0.58	0.56	0.51–0.59
AST	0.60	0.55–0.64	0.61	0.56–0.65
Albumin-to-globulin ratio	0.68	0.63–0.74	0.67	0.63–0.73
Child-Pugh grade	0.61	0.57–0.67	0.60	0.57–0.64
MELD score	0.59	0.52–0.63	0.58	0.52–0.62
ALBI grade	0.64	0.58–0.68	0.63	0.55–0.67

Abbreviations: ALBI, Albumin-Bilirubin; ALT, alanine aminotransferase; AST, aspartate transaminase; AUROC, area under the receiver operating characteristic curve; CI, confidence interval; MELD, Model for End-Stage Liver Disease; ROC, receiver operating characteristic; OS, overall survival; RFS, recurrence-free survival.

Table 4 Univariable and Multivariable Cox Regression Analyses in Predicting Overall Survival

Variables	HR Comparison	UV HR (95% CI)	UV P value	MV HR (95% CI)	MV P value *
Age	> 60 vs ≤ 60 years	0.897 (0.698–1.152)	0.395		
Sex	Male vs Female	1.054 (0.777–1.430)	0.395		
ASA score	> 2 vs ≤ 2	0.967 (0.714–1.309)	0.829		
HBV (+)	Yes vs No	1.376 (0.937–2.022)	0.104		
HCV (+)	Yes vs No	1.307 (0.717–2.383)	0.382		
Cirrhosis	Yes vs No	1.660 (1.307–2.109)	< 0.001	NS	0.213
Portal hypertension	Yes vs No	1.408 (1.148–1.726)	0.001	1.296 (1.108–1.701)	0.041
Preoperative hemoglobin	< 110 vs ≥ 110 g/L	1.641 (1.117–2.411)	0.012	NS	0.909
Preoperative platelet	< 100 vs ≥ 100 × 10 ⁹ /L	1.217 (1.042–1.326)	0.009	NS	0.276
Preoperative bilirubin	> 17.1 vs ≤ 17.1 μmol/L	1.359 (1.105–1.673)	0.004	NS	0.114
Preoperative albumin-to-globulin ratio	IAGR (< 1) vs NAGR (≥ 1)	1.736 (1.383–2.181)	< 0.001	1.444 (1.125–1.854)	0.004
Preoperative ALT	> 40 vs ≤ 40 U/L	1.279 (1.045–1.565)	0.017	NS	0.625
Preoperative AST	> 40 vs ≤ 40 U/L	1.425 (1.129–1.639)	< 0.001	NS	0.109
Preoperative INR	< 1.17 vs ≥ 1.17	1.601 (1.310–1.955)	0.173		
Preoperative creatinine	> 80 vs ≤ 80 μmol/L	1.003 (0.997–1.009)	0.338		
Preoperative AFP	> 400 vs ≤ 400 μg/L	1.659 (1.356–2.028)	< 0.001	1.311 (1.058–1.624)	0.013
Maximum tumor size	> 5.0 cm vs ≤ 5.0 cm	2.015 (1.650–2.462)	< 0.001	1.464 (1.148–1.867)	0.002
Tumor number	Multiple vs Solitary	2.122 (1.694–2.656)	< 0.001	1.151 (0.804–1.649)	0.441
Macrovascular invasion	Yes vs No	2.388 (1.468–3.886)	< 0.001	2.761 (1.860–3.925)	< 0.001
Microvascular invasion	Yes vs No	1.803 (1.473–2.206)	< 0.001	1.076 (0.857–1.350)	0.005
Satellite nodules	Yes vs No	2.413 (1.942–2.998)	< 0.001	NS	0.528
Tumor differentiation	Poor vs Well/moderate	1.769 (1.352–2.314)	< 0.001	NS	0.166
Tumor encapsulation	Incomplete vs Complete	1.812 (1.472–2.232)	< 0.001	NS	0.193
Intraoperative blood loss	> 400 vs ≤ 400 mL	1.588 (1.276–1.903)	< 0.001	NS	0.181
Intraoperative blood transfusion	Yes vs No	1.842 (1.463–2.319)	< 0.001	NS	0.089
Extent of hepatectomy	Major vs Minor	1.819 (1.458–2.270)	< 0.001	NS	0.435
Type of resection	Non-anatomical vs Anatomical	0.883 (0.703–1.107)	0.280		
Resection margin	< 1 vs ≥ 1 cm	2.271 (1.858–2.775)	< 0.001	NS	0.153

Note: *Those variables found significant at $P < 0.1$ in univariable analyses were entered into multivariable Cox regression analyses.

Abbreviations: AFP, alpha-fetoprotein; ALT, alanine aminotransferase; ASA, American Society of Anesthesiologists; AST, aspartate transaminase; CI, confidence interval; HBV, hepatitis B virus; HCV, hepatitis C virus; HR, hazard ratio; IAGR, inversed albumin-to-globulin ratio; INR, international normalized ratio; MV, multivariable; NAGR, normal albumin-to-globulin ratio; NS, not significant; UV, univariable.

information allows hepatic surgeons to have a better preoperative prediction on the long-term oncologic prognosis for patients with HCC. The albumin-to-globulin ratio can be

used as an easy, cheap, objective, and noninvasive biomarker for prognostication of patients with HCC undergoing curative hepatectomy.

Table 5 Univariable and Multivariable Cox Regression Analyses in Predicting Recurrence-Free Survival

Variables	HR Comparison	UV HR (95% CI)	UV P value	MV HR (95% CI)	MV P value *
Age	> 60 vs ≤ 60 years	0.803 (0.633–1.019)	0.071	NS	0.262
Sex	Male vs Female	0.989 (0.751–1.302)	0.939		
ASA score	> 2 vs ≤ 2	1.193 (0.814–1.749)	0.240		
HBV (+)	Yes vs No	1.404 (0.999–1.974)	0.051	NS	0.378
HCV (+)	Yes vs No	1.356 (0.811–2.270)	0.246		
Cirrhosis	Yes vs No	1.472 (1.192–1.819)	< 0.001	NS	0.252
Portal hypertension	Yes vs No	1.211 (1.004–1.460)	0.045	NS	0.147
Preoperative hemoglobin	< 110 vs ≥ 110 g/L	1.294 (0.888–1.884)	0.180		
Preoperative platelet	< 100 vs ≥ 100 × 10 ⁹ /L	1.105 (0.912–1.340)	0.309		
Preoperative bilirubin	> 17.1 vs ≤ 17.1 μmol/L	1.077 (0.888–1.306)	0.453		
Preoperative albumin-to-globulin ratio	IAGR (< 1) vs NAGR (≥ 1)	1.574 (1.271–1.950)	< 0.001	1.463 (1.159–1.848)	0.001
Preoperative ALT	> 40 vs ≤ 40 U/L	1.317 (1.096–1.582)	0.003	NS	0.626
Preoperative AST	> 40 vs ≤ 40 U/L	1.168 (1.348–1.941)	< 0.001	NS	0.157
Preoperative INR	< 1.17 vs ≥ 1.17	1.279 (1.104–1.395)	0.361		
Preoperative creatinine	> 80 vs ≤ 80 μmol/L	1.003 (0.995–1.011)	0.427		
Preoperative AFP	> 400 vs ≤ 400 μg/L	1.528 (1.270–1.839)	< 0.001	1.239 (1.021–1.504)	0.030
Maximum tumor size	> 5.0 cm vs ≤ 5.0 cm	1.924 (1.603–2.308)	< 0.001	1.373 (1.106–1.704)	0.004
Tumor number	Multiple vs Solitary	1.851 (1.503–2.279)	< 0.001	1.292 (1.103–1.681)	0.036
Macrovascular invasion	Yes vs No	3.420 (2.199–5.320)	< 0.001	2.548 (1.610–4.033)	< 0.001
Microvascular invasion	Yes vs No	1.679 (1.398–2.017)	< 0.001	1.803 (1.305–2.491)	0.001
Satellite nodules	Yes vs No	2.217 (1.811–2.714)	< 0.001	1.314 (1.148–1.774)	0.025
Tumor differentiation	Poor vs Well/moderate	1.787 (1.404–2.275)	< 0.001	NS	0.626
Tumor encapsulation	Incomplete vs Complete	1.795 (1.486–2.167)	< 0.001	NS	0.112
Intraoperative blood loss	> 400 vs ≤ 400 mL	1.413 (1.177–1.696)	< 0.001	NS	0.148
Intraoperative blood transfusion	Yes vs No	1.680 (1.355–2.082)	< 0.001	1.515 (1.132–2.207)	0.012
Extent of hepatectomy	Major vs Minor	1.829 (1.493–2.242)	< 0.001	NS	0.251
Type of resection	Non-anatomical vs Anatomical	1.486 (1.119–1.973)	0.505		
Resection margin	< 1 vs ≥ 1 cm	2.282 (1.898–2.744)	< 0.001	NS	0.261

Note: *Those variables found significant at $P < 0.1$ in univariable analyses were entered into multivariable Cox regression analyses.

Abbreviations: AFP, alpha-fetoprotein; ALT, alanine aminotransferase; ASA, American Society of Anesthesiologists; AST, aspartate transaminase; CI, confidence interval; HBV, hepatitis B virus; HCV, hepatitis C virus; HR, hazard ratio; IAGR, inverted albumin-to-globulin ratio; INR, international normalized ratio; MV, multivariable; NAGR, normal albumin-to-globulin ratio; NS, not significant; UV, univariable.

Abbreviations

AFP, alpha-fetoprotein; ALBI, Albumin-Bilirubin; ALT, alanine aminotransferase; AST, aspartate transaminase; ASA, American Society of Anesthesiologists; AUROC, area under the receiver operating characteristic curve; CI, confidence interval; CT, computed tomography; HCC, hepatocellular carcinoma; HR, hazard ratio; HBV, hepatitis B virus; HCV, hepatitis C virus; IAGR, albumin-to-globulin ratio; INR, international normalized ratio; MELD, Model for End-Stage Liver Disease; MRI, magnetic resonance imaging; NAGR, normal albumin-to-globulin ratio; NS, not significant OS, overall survival; SD, standard deviation; RFS, recurrence-free survival; ROC, receiver operating characteristic; TACE, transcatheter arterial chemoembolization.

Author Contributions

All authors made a significant contribution to the work reported, whether that is in the conception, study design,

execution, acquisition of data, analysis and interpretation, or in all these areas; took part in drafting, revising or critically reviewing the article; gave final approval of the version to be published; have agreed on the journal to which the article has been submitted; and agree to be accountable for all aspects of the work.

Funding

New technique of laparoscope hepatobiliary surgery, 2010GXJ567 and Chinese National Key Projects, 201502014.

Disclosure

The authors report no conflicts of interest for this work.

References

- Villanueva A. Hepatocellular carcinoma. *N Engl J Med*. 2019;380:1450–1462. doi:10.1056/NEJMra1713263

2. Vibert E, Schwartz M, Olthoff KM. Advances in resection and transplantation for hepatocellular carcinoma. *J Hepatol*. 2020;72:262–276. doi:10.1016/j.jhep.2019.11.017
3. Zhong JH, Torzilli G, Xing H, et al. Controversies and evidence of hepatic resection for hepatocellular carcinoma. *BBA Clin*. 2016;6:125–130. doi:10.1016/j.bbacli.2016.10.001
4. Maluccio M, Covey A. Recent progress in understanding, diagnosing, and treating hepatocellular carcinoma. *CA Cancer J Clin*. 2012;62:394–399. doi:10.3322/caac.21161
5. Tung-Ping PR, Fan ST, Wong J. Risk factors, prevention, and management of postoperative recurrence after resection of hepatocellular carcinoma. *Ann Surg*. 2000;232:10–24. doi:10.1097/0000658-200007000-00003
6. Poon RT. Prevention of recurrence after resection of hepatocellular carcinoma: a daunting challenge. *Hepatology*. 2011;54:757–759. doi:10.1002/hep.24569
7. Hoekstra LT, de Graaf W, Nibourg GA, et al. Physiological and biochemical basis of clinical liver function tests: a review. *Ann Surg*. 2013;257:27–36. doi:10.1097/SLA.0b013e31825d5d47
8. Agrawal S, Dhiman RK, Limdi JK. Evaluation of abnormal liver function tests. *Postgrad Med J*. 2016;92:223–234. doi:10.1136/postgradmedj-2015-133715
9. Knight JA. Liver function tests: their role in the diagnosis of hepatobiliary diseases. *J Infus Nurs*. 2005;28:108–117. doi:10.1097/00129804-200503000-00004
10. Tsochatzis EA, Bosch J, Burroughs AK. Liver cirrhosis. *Lancet*. 2014;383:1749–1761. doi:10.1016/S0140-6736(14)60121-5
11. Beardwood C, Gilbert C, Gillman J. Endocrine control of the plasma albumin/globulin ratio. *Nature*. 1962;195:710–711. doi:10.1038/195710a0
12. Azab B, Kedia S, Shah N, et al. The value of the pretreatment albumin/globulin ratio in predicting the long-term survival in colorectal cancer. *Int J Colorectal Dis*. 2013;28:1629–1636. doi:10.1007/s00384-013-1748-z
13. Fujikawa H, Toiyama Y, Inoue Y, et al. Prognostic impact of preoperative albumin-to-globulin ratio in patients with colon cancer undergoing surgery with curative intent. *Anticancer Res*. 2017;37:1335–1342.
14. Xu Y, Xu X, Xi C, et al. Prognostic value of preoperative albumin to globulin ratio in elderly patients with rectal cancer. *Medicine*. 2019;98:e16066. doi:10.1097/MD.000000000016066
15. Zhang B, Yu W, Zhou LQ, et al. Prognostic significance of preoperative albumin-globulin ratio in patients with upper tract urothelial carcinoma. *PLoS One*. 2015;10:e0144961. doi:10.1371/journal.pone.0144961
16. Liu J, Dai Y, Zhou F, et al. The prognostic role of preoperative serum albumin/globulin ratio in patients with bladder urothelial carcinoma undergoing radical cystectomy. *Urol Oncol*. 2016;34:484.e1484.e8. doi:10.1016/j.urolonc.2016.05.024
17. Liu Z, Huang H, Li S, et al. The prognostic value of preoperative serum albumin-globulin ratio for high-grade bladder urothelial carcinoma treated with radical cystectomy: A propensity score-matched analysis. *J Cancer Res Ther*. 2017;13:837–843. doi:10.4103/jcrt.JCRT_237_17
18. Fukushima H, Kobayashi M, Kawano K, et al. Prognostic value of albumin/globulin ratio in patients with upper tract urothelial carcinoma patients treated with radical nephroureterectomy. *Anticancer Res*. 2018;38:2329–2334.
19. Xu H, Tan P, Ai J, et al. Prognostic impact of preoperative albumin-globulin ratio on oncologic outcomes in upper tract urothelial carcinoma treated with radical nephroureterectomy. *Clin Genitourin Cancer*. 2018;16:e10591059e1068. doi:10.1016/j.clgc.2018.06.003
20. Xue F, Lin F, Yin M, et al. Preoperative albumin/globulin ratio is a potential prognosis predicting biomarker in patients with resectable gastric cancer. *Turk J Gastroenterol*. 2017;28:439–445. doi:10.5152/tjg.2017.17167
21. Toiyama Y, Yasuda H, Ohi M, et al. Clinical impact of preoperative albumin to globulin ratio in gastric cancer patients with curative intent. *Am J Surg*. 2017;213:120–126. doi:10.1016/j.amjsurg.2016.05.012
22. Mao MJ, Wei XL, Sheng H, et al. Clinical significance of preoperative albumin and globulin ratio in patients with gastric cancer undergoing treatment. *Biomed Res Int*. 2017;3083267.
23. Bozkaya Y, Erdem GU, Demirci NS, et al. Prognostic importance of the albumin to globulin ratio in metastatic gastric cancer patients. *Curr Med Res Opin*. 2019;35:275–282. doi:10.1080/03007995.2018.1479683
24. Yao Y, Zhao M, Yuan D, et al. Elevated pretreatment serum globulin albumin ratio predicts poor prognosis for advanced non-small cell lung cancer patients. *J Thorac Dis*. 2014;6:1261–1270.
25. Zhou T, He X, Fang W, et al. Pretreatment albumin/globulin ratio predicts the prognosis for small-cell lung cancer. *Medicine*. 2016;95:e3097. doi:10.1097/MD.0000000000003097
26. Wang Y, Li S, Hu X, et al. The prognostic value of serum albumin-globulin ratio in early-stage non-small cell lung cancer: a retrospective study. *Cancer Manag Res*. 2019;11:3545–3554. doi:10.2147/CMAR.S191288
27. Deng Y, Pang Q, Miao RC, et al. Prognostic significance of pretreatment albumin/globulin ratio in patients with hepatocellular carcinoma. *Onco Targets Ther*. 2016;9:5317–5328. doi:10.2147/OTT.S109736
28. Shimizu T, Ishizuka M, Suzuki T, et al. The preoperative globulin-to-albumin ratio, a novel inflammation-based prognostic system, predicts survival after potentially curative liver resection for patients with hepatocellular carcinoma. *J Surg Oncol*. 2017;116:1166–1175. doi:10.1002/jso.24772
29. Zhang J, Liu X, Yang Z, et al. The pretreatment albumin to globulin ratio, a validated biomarker, predicts prognosis in hepatocellular carcinoma. *J BUON*. 2016;21:925–934.
30. Strasberg SM, Phillips C. Use and dissemination of the brisbane 2000 nomenclature of liver anatomy and resections. *Ann Surg*. 2013;257:377–382. doi:10.1097/SLA.0b013e31825a01f6
31. Xu XF, Xing H, Han J, et al. Risk factors, patterns, and outcomes of late recurrence after liver resection for hepatocellular carcinoma: a multicenter study from China. *JAMA Surg*. 2019;154:209–217. doi:10.1001/jamasurg.2018.4334
32. Spiekerman AM. Nutritional assessment (protein nutriture). *Anal Chem*. 1995;67:429R436R. doi:10.1021/ac00108a026
33. Pagliaro L. MELD: the end of Child-Pugh classification. *J Hepatol*. 2002;36:141–142. doi:10.1016/S0168-8278(01)00302-6
34. Johnson PJ, Berhane S, Kagebayashi C, et al. Assessment of liver function in patients with hepatocellular carcinoma: a new evidence-based approach—the ALBI grade. *J Clin Oncol*. 2015;33:550–558. doi:10.1200/JCO.2014.57.9151
35. Franssen B, Alshebeeb K, Tabrizian P, et al. Differences in surgical outcomes between hepatitis B- and hepatitis C-related hepatocellular carcinoma: a retrospective analysis of a single north american center. *Ann Surg*. 2014;260:650–658.
36. Russell PS. Influence of accompanying chronic hepatitis status on recurrence of hepatocellular carcinoma after hepatectomy. *Ann Surg*. 1996;224:596–597. doi:10.1097/0000658-199611000-00002
37. Sasaki Y, Yamada T, Tanaka H, et al. Risk of recurrence in a long-term follow-up after surgery in 417 patients with hepatitis B- or hepatitis C-related hepatocellular carcinoma. *Ann Surg*. 2006;244:771–780. doi:10.1097/01.sla.0000225126.56483.b3
38. Chen VL, Le AK, Kim NG, et al. Effects of cirrhosis on short-term and long-term survival of patients with hepatitis b-related hepatocellular carcinoma. *Clin Gastroenterol Hepatol*. 2016;14:887–895.e1. doi:10.1016/j.cgh.2015.12.044
39. Poon RT, Fan ST, Lo CM, et al. Improving survival results after resection of hepatocellular carcinoma: a prospective study of 377 patients over 10 years. *Ann Surg*. 2001;234:63–70. doi:10.1097/0000658-200107000-00010

40. Zheng J, Chou JF, Gönen M, et al. Prediction of hepatocellular carcinoma recurrence beyond milan criteria after resection: validation of a clinical risk score in an international cohort. *Ann Surg.* 2017;266:693–701. doi:10.1097/SLA.0000000000002360
41. Pinna AD, Yang T, Mazzaferro V, et al. Liver transplantation and hepatic resection can achieve cure for hepatocellular carcinoma. *Ann Surg.* 2018;268:868–875. doi:10.1097/SLA.0000000000002889
42. Voron T, Tselikas L, Pietrasz D, et al. Sarcopenia impacts on short- and long-term results of hepatectomy for hepatocellular carcinoma. *Ann Surg.* 2015;261:1173–1183. doi:10.1097/SLA.0000000000000743
43. Zhao Z, Liu J, Wang J, et al. Platelet-to-lymphocyte ratio (PLR) and neutrophil-to-lymphocyte ratio (NLR) are associated with chronic hepatitis B virus (HBV) infection. *Int Immunopharmacol.* 2017;51:1–8. doi:10.1016/j.intimp.2017.07.007
44. Ji F, Liang Y, Fu S, et al. Prognostic value of combined preoperative prognostic nutritional index and body mass index in HCC after hepatectomy. *HPB (Oxford).* 2017;19:695–705. doi:10.1016/j.hpb.2017.04.008
45. Pinato DJ, North BV, Sharma R. A novel, externally validated inflammation-based prognostic algorithm in hepatocellular carcinoma: the prognostic nutritional index (PNI). *Br J Cancer.* 2012;106:1439–1445. doi:10.1038/bjc.2012.92
46. Stremitzer S, Tamandl D, Kaczirek K, et al. Value of hepatic venous pressure gradient measurement before liver resection for hepatocellular carcinoma. *Br J Surg.* 2011;98:1752–1758. doi:10.1002/bjs.7672
47. Wang Y, Peng C, Cheng Z, et al. The prognostic significance of pre-operative neutrophil-lymphocyte ratio in patients with hepatocellular carcinoma receiving hepatectomy: A systematic review and meta-analysis. *Int J Surg.* 2018;55:73–80. doi:10.1016/j.ijssu.2018.05.022

Cancer Management and Research

Dovepress

Publish your work in this journal

Cancer Management and Research is an international, peer-reviewed open access journal focusing on cancer research and the optimal use of preventative and integrated treatment interventions to achieve improved outcomes, enhanced survival and quality of life for the cancer patient.

The manuscript management system is completely online and includes a very quick and fair peer-review system, which is all easy to use. Visit <http://www.dovepress.com/testimonials.php> to read real quotes from published authors.

Submit your manuscript here: <https://www.dovepress.com/cancer-management-and-research-journal>