

Clinical Molecular Epidemiology of Carbapenem-Resistant *Klebsiella pneumoniae* Among Pediatric Patients in Jiangsu Province, China

This article was published in the following Dove Press journal:
Infection and Drug Resistance

Ziyan Kong^{1,2,*}
Xuemei Liu^{3,*}
Chenxi Li^{1,*}
Siyun Cheng¹
Fei Xu³
Bing Gu^{1,4}

¹Medical Technology School, Xuzhou Medical University, Xuzhou, Jiangsu Province, People's Republic of China;

²Department of Laboratory Medicine, The First People's Hospital of Lianyungang, Lianyungang, Jiangsu Province, People's Republic of China;

³Department of Laboratory Medicine, Children's Hospital of Nanjing Medical University, Nanjing, Jiangsu Province, People's Republic of China; ⁴Department of Laboratory Medicine, Affiliated Hospital of Xuzhou Medical University, Xuzhou, Jiangsu Province, People's Republic of China

*These authors contributed equally to this work

Correspondence: Fei Xu
Department of Laboratory Medicine,
Children's Hospital of Nanjing Medical
University, Nanjing 210009, People's
Republic of China
Email 350826448@qq.com

Bing Gu
Department of Laboratory Medicine,
Affiliated Hospital of Xuzhou Medical
University, Xuzhou 221006, People's
Republic of China
Email gb20031129@163.com

Purpose: The continuous emergence of carbapenem-resistant *Klebsiella pneumoniae* (CRKP) has become a serious public health problem globally, especially for children, but data on CRKP infection in pediatric patients are limited. This study aimed to identify epidemiological and molecular patterns of CRKP among pediatric patients in Jiangsu province, China.

Patients and Methods: CRKP were consecutively collected from the Children's Hospital of Nanjing Medical University in China from July 2018 to May 2019. Then, CRKP strains were performed for further study: antimicrobial susceptibility testing, drug-resistance determinants screening and homology analysis.

Results: We collected 94 CRKP from 94 children. Overall, *bla*_{KPC-2} (79.8%) was the predominant carbapenemase gene, followed by *bla*_{NDM-1} (14.9%), *bla*_{IMP-4} (5.3%) and *bla*_{NDM-5} (4.3%). Notably, two isolates harbored *bla*_{KPC-2} and *bla*_{IMP-4}, and two isolates harbored *bla*_{KPC-2} and *bla*_{NDM-5}. MLST analysis revealed that 14 distinct sequence types (STs) were identified, of which ST11 was the most common sequence type identified. Moreover, two novel STs, ST4854 and ST4855, were detected in this study. PFGE revealed that a predominant cluster consisting of KPC-2-producing CRKP ST11 clone isolates was identified and was distributed mainly in the pediatric intensive care unit (PICU) and cardiac intensive care unit (CCU). Moreover, this is the first report to identify the dissemination of ST716 CRKP coproducing KPC-2 and IMP-4 clones.

Conclusion: Clonal dissemination of KPC-2-producing CRKP ST11 was observed in multiple departments. Moreover, two novel STs (ST4854 and ST4855) were identified, which indicates an increased diversity of CRKP strains. To our knowledge, this is the first report that identified the dissemination of *Klebsiella pneumoniae* coproducing KPC-2 and IMP-4 clones among children, which represents a significant health risk to pediatric patients. Active surveillance and effective control measures are urgently needed to prevent further transmission of these strains among children.

Keywords: *Klebsiella pneumoniae*, carbapenemase, KPC-2, ST11, clonal dissemination, children

Introduction

The emergence of carbapenem-resistant *Klebsiella pneumoniae* (CRKP) has become a serious global public health problem that spreads among our most vulnerable population, children.¹ In 2017, the World Health Organization (WHO) published its first list of antibiotic-resistant "priority pathogens" - a catalog of 12 families of bacteria

that pose the greatest threat to human health, and CRKP was listed as a critical priority pathogen.² According to data from the China Antimicrobial Surveillance Network (CHINET) for 2005–2017, the prevalence of CRKP in children dramatically increased from 2.2% (5.0% in adults) to 25.4% (21.2% in adults).³ The production of carbapenemase is the major mechanism of CRKP strain resistance to carbapenem. Carbapenemases reported worldwide mainly include class A enzyme *Klebsiella pneumoniae* carbapenemase (KPC), class B enzyme New Delhi metallo- β -lactamase (NDM) and class D enzyme oxacillinase type 48 (OXA-48). In China, previous studies revealed that the main carbapenemase of adults was KPC-2, while the predominant carbapenemase of pediatric patients was NDM-1.^{4,5}

Children, as naturally vulnerable groups, have a limited choice of antibiotics due to side effects. In addition, carbapenem resistance genes and other resistance genes are often detected in CRKP strains simultaneously, which increases the difficulty of anti-infection treatment in children.⁶ Previous studies showed high morbidity and mortality in pediatric patients infected with CRKP.¹ Therefore, more information about the molecular characteristics of CRKP is needed to effectively control the spread of CRKP and prevent outbreaks in pediatric patients in the future. We aimed to investigate the resistance determinants, antibiotic resistance characteristics, and genetic relatedness among CRKP isolates from pediatric patients at the Children's Hospital of Nanjing Medical University in Jiangsu Province, China.

Patients and Methods

Collection of Bacterial Strains

Consecutive nonduplicated strains of CRKP were prospectively collected from July 2018 to May 2019 from inpatients who were admitted to Children's Hospital of Nanjing Medical University, which is one of the largest Children's hospitals in Jiangsu, China. There are approximately 1400 beds in the hospital with an estimated population of two million patient visits per year. Strain identification was performed by matrix-assisted laser desorption/ionization time-of-flight mass spectrometry. In vitro antimicrobial susceptibility testing of isolates was analyzed with a VITEK-2 compact system (bioMérieux, Marcy-l'Étoile, France). The electronic medical records of the children, including patient age, sex, ward, underlying diseases and specimen source, were retrospectively reviewed.

Antimicrobial Susceptibility Testing

The minimum inhibitory concentrations (MICs) of imipenem, meropenem, cefazolin, cefuroxime, ceftazidime, cefepime, piperacillin-tazobactam, aztreonam, amikacin, ciprofloxacin, colistin, tigecycline, and sulfamethoxazole were detected by the broth microdilution method. Susceptibility breakpoints were interpreted in accordance with the Clinical and Laboratory Standards Institute (CLSI), except for tigecycline and colistin, which were interpreted based on the European Committee for Antimicrobial Susceptibility Testing (EUCAST) criteria.^{7,8}

Detection of Resistance Determinant

PCR using the primers was conducted as previously described and used to detect carbapenemase genes (*bla*_{KPC}, *bla*_{NDM}, *bla*_{IMP}, *bla*_{VIM}, *bla*_{OXA-48}), common extended-spectrum β -lactamase (ESBL) genes (*bla*_{CTX-M}, *bla*_{SHV} and *bla*_{TEM}) and plasmid-encoding AmpC genes (*bla*_{DHA}, *bla*_{CIT}, *bla*_{MOX}, *bla*_{EBC}, *bla*_{FOX}).^{9–15} The amplicons were screened by electrophoresis on a 1.5% agarose gel. The positive amplicons were sequenced using Sanger sequencing, and the entire sequences obtained were compared to the reported sequences in GenBank using the BLAST algorithm (<http://www.ncbi.nlm.nih.gov/blast/>).

Molecular Typing

Multilocus sequence typing (MLST) was performed for genotyping according to the protocol described previously on the MLST website of the Pasteur Institute (<http://bigsgdb.pasteur.fr/klebsiella/klebsiella.html>). The sequences of seven housekeeping genes (*infB*, *pgi*, *mdh*, *phoE*, *gapA*, *tonB* and *rpoB*) were compared with those in the *Klebsiella pneumoniae* MLST database. A minimum spanning tree of 94 *Klebsiella pneumoniae* strains was constructed in BioNumerics software version 7.6.

The clonal relationships of *Klebsiella pneumoniae* isolates were determined by pulsed-field gel electrophoresis (PFGE). PFGE was performed according to the protocol established by the Centers for Disease Control and Prevention (Atlanta, GA). The PFGE patterns were also compared using BioNumerics software version 7.6, with a cutoff at 80% similarity to indicate identical PFGE types.

Results

Clinical Characteristics of CRKP Isolates

During the study period, 942 nonrepetitive *Klebsiella pneumoniae* were isolated from pediatric patients in

Children's Hospital of Nanjing Medical University, of which 94 (10.0%) were identified as carbapenem-resistant *Klebsiella pneumoniae*. The clinical and epidemiological characteristics of these isolates are summarized in Table 1. Children who were colonized or infected with CRKP had a median age of 4 months (interquartile range, 2–12 months), and the male-to-female ratio was 1.7. The isolated CRKP strains were collected from clinical specimens, which included sputum (72.3%, 68/94), urine (9.6%, 9/94), blood (8.5%, 8/94), and other samples (9.6%, 9/94). The CRKP strains were isolated from pediatric patients in 16 different wards but were primarily from PICU (26.6%, 25/94), pneumology department (13.9%, 13/94) and CCU (13.9%, 13/94). From electronic medical records, the most common diseases in patients were pneumonia (62.8%, 59/94) and sepsis (18.1%, 17/94), and the most common underlying conditions was chronic heart disease (8.5%, 8/94).

Table 1 Clinical Characteristics of the CRKP Strains

Characteristics	n=94
Age in months (median)	4
Male gender	59 (62.8%)
Specimen	
Sputum	68 (72.3%)
Urine	9 (9.6%)
Blood	8 (8.5%)
Others	9 (9.6%)
Wards	
PICU	25 (26.6%)
Pneumology department	13 (13.9%)
CCU	13 (13.9%)
Neonatal medicine	12 (12.8%)
Others	31 (33.0%)
Diseases	
Pneumonia	59 (62.8%)
Sepsis	17 (18.1%)
Cerebral disease	3 (3.2%)
Urinary tract infection	1 (1.1%)
Underlying conditions	
Chronic Heart Disease	8 (8.5%)
Neonatal Respiratory Distress Syndrome	3 (3.2%)
Gastroenteritis	2 (2.1%)
Immunodeficiency	2 (2.1%)
Outcome	
Cure	90 (95.7%)
Death	4 (4.3%)

Abbreviations: PICU, pediatric intensive care unit; CCU, cardiac care unit.

Antibiotic Susceptibility Testing

The results of the antimicrobial susceptibility testing of the 94 CRKP strains are shown in Table 2 and the minimum inhibitory concentration (MIC) values are showed Supplementary Table 1. All 94 clinical isolates were observed as multidrug-resistant bacteria and exhibited resistance to meropenem, cephalosporins and enzyme inhibitors. The rates of susceptibility to imipenem, aztreonam, ciprofloxacin, amikacin and sulfamethoxazole were 1.1%, 4.3%, 18.1%, 43.6% and 85.1%, respectively. Additionally, the CRKP strains showed a high susceptibility rate to tigecycline and colistin (100.0%).

Detection of Resistance Determinants

All 94 isolates carried the carbapenemase genes, and *bla*_{KPC-2} (79.8%, 75/94) was predominantly detected, followed by *bla*_{NDM-1} (14.9%, 14/94), *bla*_{IMP-4} (5.3%, 5/94) and *bla*_{NDM-5} (4.3%, 4/94).

Notably, two strains coharboring *bla*_{KPC-2} and *bla*_{IMP-4} were obtained from two children in the PICU who underwent mechanical ventilation and died of severe lung infection. In addition, two strains coharboring *bla*_{KPC-2} and *bla*_{NDM-5} were also isolated from two children in the PICU.

All isolates were successfully identified with ESBL genes. *Bla*_{SHV} was the most prevalent among the ESBL

Table 2 Antimicrobial Susceptibility Patterns of CRKP Strains, % (n)

Antibiotics	Susceptible	Intermediate	Resistant
Imipenem	1.1 (1)	0.0 (0)	98.9 (93)
Meropenem	0.0 (0)	0.0 (0)	100.0 (94)
Piperacillin-tazobactam	0.0 (0)	0.0 (0)	100.0 (94)
Cefazolin	0.0 (0)	0.0 (0)	100.0 (94)
Cefuroxime	0.0 (0)	0.0 (0)	100.0 (94)
Ceftazidime	0.0 (0)	0.0 (0)	100.0 (94)
Cefepime	0.0 (0)	0.0 (0)	100.0 (94)
Aztreonam	4.3 (4)	0.0 (0)	95.7 (90)
Ciprofloxacin	18.1 (17)	2.1% (2)	79.8 (75)
Amikacin	43.6 (41)	0.0 (0)	56.4 (53)
Sulfamethoxazole	85.1 (80)	0.0 (0)	14.9 (14)
Tigecycline	100.0 (94)	0.0 (0)	0.0 (0)
Colistin	100.0 (94)	0.0 (0)	0.0 (0)

genes. The common subtypes of *bla*_{SHV} in these strains were *bla*_{SHV-11} (46.8%, 44/94), *bla*_{SHV-12} (24.5%, 23/94), *bla*_{SHV-2a} (7.4%, 7/94), *bla*_{SHV-1} (6.4%, 6/94), *bla*_{SHV-27} (2.1%, 2/94), *bla*_{SHV-26} (1.1%, 1/94), *bla*_{SHV-28} (1.1%, 1/94) and *bla*_{SHV-187} (1.1%, 1/94). Other ESBL genes were *bla*_{TEM-1} (n=68), *bla*_{CTX-M-15} (n=13), *bla*_{CTX-M-65} (n=6), *bla*_{CTX-M-27} (n=1) and *bla*_{CTX-M-14} (n=1). The *bla*_{DHA-1} gene, which is an AmpC β-lactamase gene, was detected in one strain.

Molecular Typing

Among the 94 CRKP strains, a total of 14 different sequence types (STs) (12 previously described STs and 2 novel STs) were identified. ST11 (75.5%, 71/94) was the most common type, followed by ST76 (8.5%, 8/94) and other uncommon STs that were identified in one or two strains each. Furthermore, ST4854 (gapA = 2, infB = 3, mdh = 1, pgi = 1, phoE = 4, rpoB = 4, tonB = 56) and ST4855 (gapA = 18, infB = 22, mdh = 63, pgi = 96, phoE = 167, rpoB = 13, tonB = 192) represented two novel allelic profiles of seven housekeeping genes. ST4854 is

close to the 10 known STs including ST20, ST422, ST691, ST924, ST1188, ST1482, ST2806, ST2807, ST3640, ST4682. ST4855 is the closest to the discovered ST1105.

The distributions of carbapenemases among different STs are shown in Figure 1. This study showed that most KPC-2 producers (94.7%, 71/75) belonged to ST11, whereas NDM-1 producers belonged to many STs such as ST76 (n=7), ST20 (n=2), ST17 (n=1), ST35 (n=1), ST193 (n=1), ST690 (n=1), and ST4854 (n=1). Strains carrying the IMP-4 gene belonged to ST716 (n=2), ST34 (n=1), ST76 (n=1), and ST307 (n=1). The NDM-5 gene belonged to ST1140 (n=2), ST11 (n=1) and ST4855 (n=1). Additionally, two isolates coharboring KPC-2 and IMP-4 were typed as ST716, and two strains coharboring KPC-2 and NDM-5 were typed as ST11 and ST4855, respectively.

PFGE patterns of XbaI-digested genomic DNA of 94 CRKP isolates revealed 12 different clusters. PFGE profiles of 71 ST11 CRKP isolates were grouped into 3 different PFGE clusters. The predominant cluster consisting of 63 KPC-2-producing CRKP ST11 clone strains was

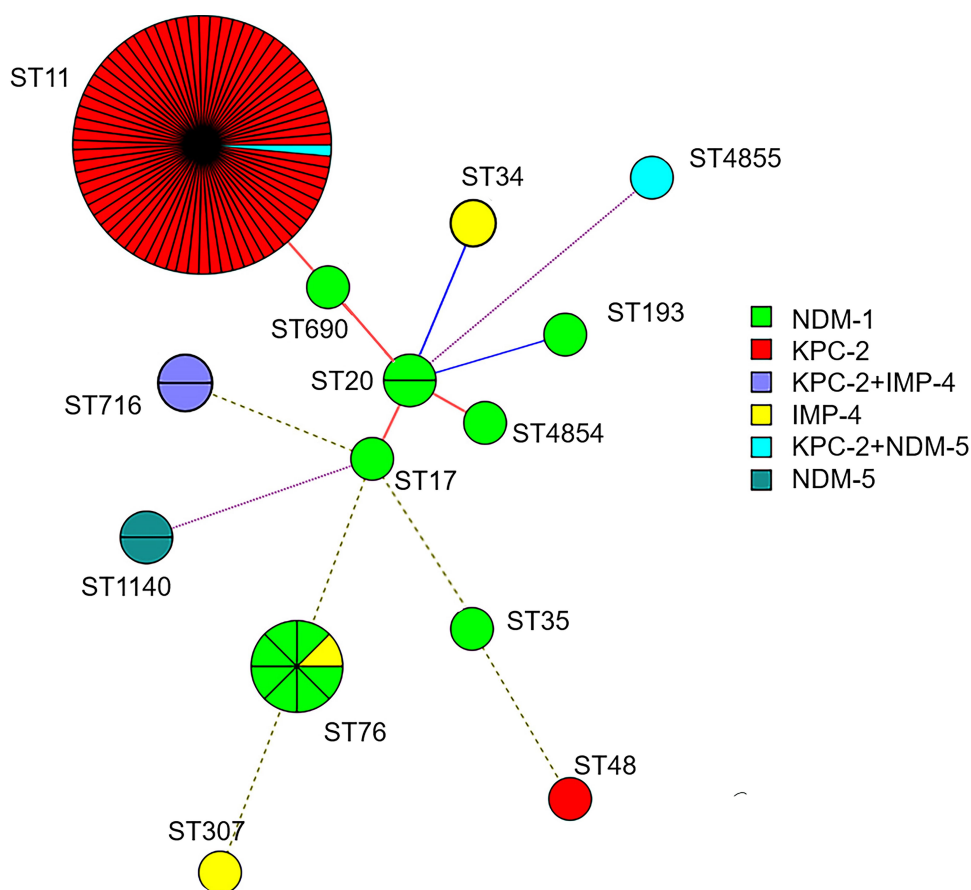


Figure 1 Minimum spanning trees of 94 CRKP isolates. Each node represents a single ST. The size of the nodes was proportional to the number of strains within the represent ST. The color distribution represents distribution of carbapenemase genes among different STs.

identified, indicating clone dissemination of those isolates mainly from the PICU (n=16), CCU (n=11) and pneumology department (n=9) (Figure 2). Furthermore, the PFGE profiles of the other 23 non-ST11 CRKP isolates were grouped into nine different PFGE clusters (Figure 3). Among them, 7 NDM-1-producing CRKP ST76 clones displayed the same PFGE profiles, which revealed clonal dissemination of these strains from the pneumology

department (n=3), neonatal medicine department (n=3), and infectious disease department (n=1). Two isolates coharboring KPC-2 and IMP-4 belonged to ST716 from the PICU and shared highly similar PFGE patterns. In addition, two NDM-5-producing ST1140 clones and two NDM-1-producing CRKP ST20 clones from the surgical intensive care unit (SICU) shared the same PFGE profiles. In general, the clonal dissemination of CRKP was

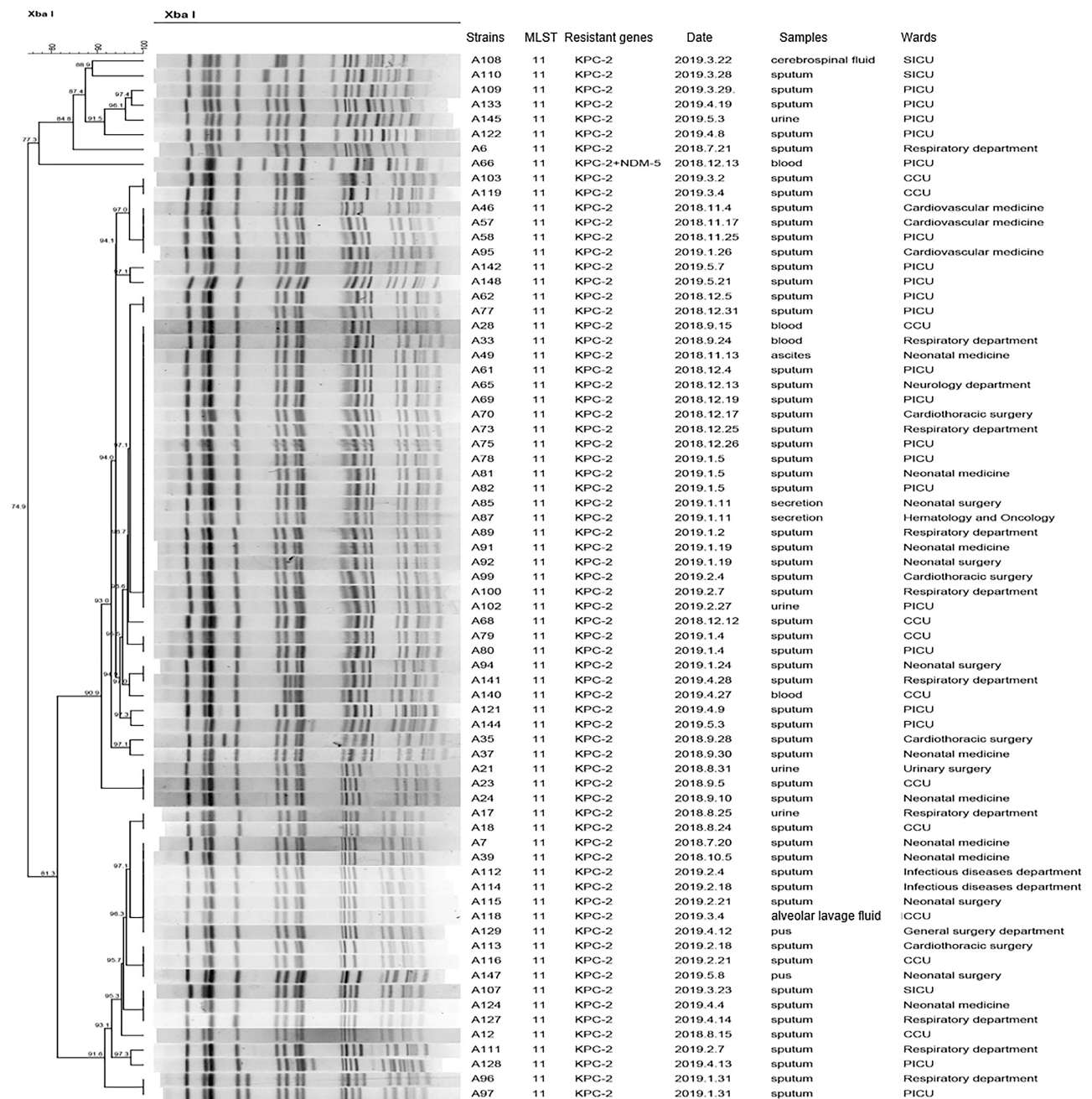


Figure 2 Dendrogram of PFGE profiles of 71 CRKP ST11 isolates. The UPGMA algorithm was performed to construct a dendrogram based on the dice similarity coefficient. Strains were classified as the same clone cluster when their dice similarity index was $\geq 80\%$.

Abbreviations: SICU, surgical intensive care unit; PICU, pediatric intensive care unit; CCU, cardiac care unit.

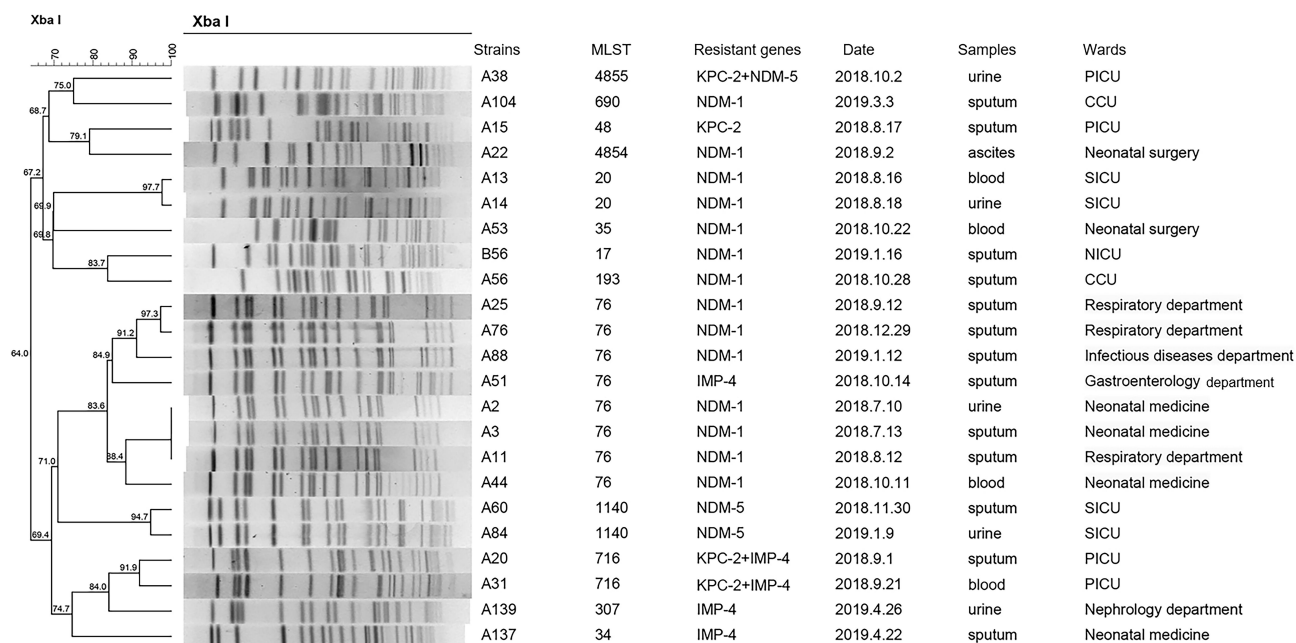


Figure 3 Dendrogram of PFGE profiles of 23 CRKP non-ST11 strains. The UPGMA algorithm was performed to construct dendrogram based on the dice similarity coefficient. Strains were classified as the same clone cluster when their dice similarity index was $\geq 80\%$.

Abbreviations: PICU, pediatric intensive care unit; CCU, cardiac care unit; SICU, surgical intensive care unit; NICU, cardiac care unit.

identified in multiple departments, with the intensive care unit being the most common.

Discussion

CRKP is an emerging problem that spreads among our most vulnerable population, children. Previous studies have mostly focused on adults, and molecular epidemiological data on children are limited. The aim of the present study was to describe the microbial resistance characteristics and epidemiological clinical characteristics of CRKP, which may help to prevent CRKP from becoming an epidemic in children. To the best of our knowledge, this is the first report of the clonal spread of *Klebsiella pneumoniae* ST716 coproducing KPC-2 and IMP-4 among pediatric patients.

In this study, all 94 CRKPs were multidrug-resistant bacteria, but the resistance rate of strains to sulfamethoxazole, tigecycline and colistin was low, which may be due to their less use in children. In China, sulfamethoxazole, tigecycline and colistin were not recommended for children due to their potential side effects. A previous study revealed that colistin in combination with other antimicrobial agents resulted in relatively low nephrotoxicity and a favorable outcome in $>70\%$ of pediatric patients with infections due to carbapenem-resistant bacteria.¹⁶ It is worth noting that with the continuous use of colistin in

clinical practice, *Klebsiella pneumoniae* has been reported to be resistant to colistin, and its resistance mechanism is different from previous chromosomal mutations but is caused by the colistin resistance gene (*mcr-1*) carried by plasmids.¹⁷ With the limited choice of antimicrobial agents in children, there is an urgent need to take effective infection control measures and strengthen continuous surveillance to prevent further dissemination of CRKPs among pediatric patients.

KPC was previously described as the most common type of carbapenemase in *Klebsiella pneumoniae* strains in adults,¹⁸ which is consistent with the current results that the 75 (79.8%) CRKPs collected from children mainly produced the KPC-2 enzyme. In addition, homology analysis showed that KPC-2-producing CRKP ST11 clones were widely spread in multiple departments, mainly in the PICU and CCU. ST11 was the dominant clone of KPC-2-producing CRKP isolates in China. A previous study revealed that ST11 *Klebsiella pneumoniae* showed a pandrug-resistant phenotype with a high prevalence of virulence factors favoring the binding, biofilm formation, colonization and escape from phagocytosis, which can make clones of this pathogen successfully spread worldwide.¹⁹ In this study, NDM-1-producing *Klebsiella pneumoniae* were identified, accounting for 14.9% of the CRKPs collected. A 5-year surveillance of CRKP strains

in China revealed that NDM-1 enzymes gradually became the most prevalent type of carbapenemase in children.⁵ The current findings revealed that ST76 and ST20 *Klebsiella pneumoniae* cause clonal dissemination of NDM-1-producing *Klebsiella pneumoniae* in our hospital. It has been reported that NDM-1-producing *Klebsiella pneumoniae* ST76 caused an infection outbreak in the neonatal unit in Shanghai and that NDM-1-producing *Klebsiella pneumoniae* ST20 caused an infection outbreak in the neonatal unit in Shandong Province, suggesting that ST76 and ST20 are potentially high-risk clones that need more attention.^{20,21} Moreover, NDM-1-producing *Klebsiella pneumoniae* had different clonal backgrounds, and NDM-1 was also observed in ST17, ST35 and ST690 isolates in our study. To our knowledge, ST690 and ST4854 NDM-1-producing *Klebsiella pneumoniae* have never been reported globally, indicating that the diversity of NDM-1-producing *Klebsiella pneumoniae* is increasing. The NDM-5 enzyme, first identified in the *Escherichia coli* strain in the UK, appeared to show increased hydrolytic activity to carbapenems and extended-spectrum cephalosporins.^{22,23} Notably, our previous research found that the NDM-5 enzyme was associated with nosocomial outbreaks of ST337 *Klebsiella pneumoniae* in a neonatal unit in Jiangsu Province.²⁴ Our current results show that the spread of *bla*_{NDM-5}-harboring ST1140 clone strains was first identified in the SICU at the Children's Hospital of Nanjing Medical University, revealing rapid evolution of CRKP strains among pediatric patients.

Notably, two ST716 *Klebsiella pneumoniae* strains coharboring *bla*_{KPC-2} and *bla*_{IMP-4} and a novel *Klebsiella pneumoniae* sequence type 4855 carrying both *bla*_{KPC-2} and *bla*_{NDM-5} were identified. The KPC enzyme has the ability to hydrolyze monobactam antibiotics but can be inhibited by some β -lactamase inhibitors, such as avibactam. However, avibactam is inactive against metallo- β -lactamase (MBL) producers, including NDM and IMP, and monobactam antibiotics are active against MBL producers.²⁵ Therefore, the synergistic effects of different carbapenemase classes may lead to higher levels of resistance to carbapenems and other antimicrobials. Due to the limited choice of antibiotics in children, the emergence of these strains brings great challenges to clinical treatment.

Up to now, only one KPC-2 and IMP-4 co-producing CRKP isolate and one strain harbored *bla*_{KPC-2} and *bla*_{NDM-5} have been identified from children.^{26,27} To our knowledge, this is the first report of the dissemination of *Klebsiella pneumoniae* coproducing KPC-2 and IMP-4

clones among children. Something of concern is that these two pediatric patients died of severe lung infection, which suggests that the *Klebsiella pneumoniae* isolates coproducing two carbapenemases may pose a significant health risk to pediatric patients. A previous study revealed that *Klebsiella pneumoniae* coproducing the KPC-2 and NDM-1 enzymes are highly stable, have interhost transmission capacity, and are resistant to the newly marketed ceftazidime-avibactam.²⁸ Therefore, effective infection control measures are urgently required to prevent the further spread of the strains coproducing two carbapenemases among children.

There are some limitations to this study. First, it was performed at a third-grade children's hospital in Jiangsu province, and molecular epidemiology and drug-resistance mechanisms of CRKP strains in our children may not be generalizable to children patients throughout our country. In addition, the clinical characteristics of patients with CRKP isolates were briefly reviewed in our study, and we did not identify independent risk factors for CRKP strains infections due to a lot of related research has been performed, and our study focused mainly on clinical molecular epidemiology of carbapenem-resistant *Klebsiella pneumoniae* among pediatric patients.

Conclusion

In summary, the production of KPC-2 was the main mechanism of carbapenem resistance among pediatric patients in Nanjing, Jiangsu Province. Clonal dissemination of KPC-2-producing *Klebsiella pneumoniae* ST11 isolates was observed in multiple departments, with PICU and CCU being the most common, showing extensive cross-transmission of CRKP strains among high-risk wards. This was the first report of the dissemination of ST716 *Klebsiella pneumoniae* coproducing KPC-2 and IMP-4 clones in children, and the detection of the *Klebsiella pneumoniae* isolates coproducing two carbapenemases represents a significant health risk to pediatric patients. Therefore, active surveillance and strict infection control measures are urgently needed to prevent *Klebsiella pneumoniae* strains coproducing two or more carbapenemases from becoming epidemic among children in the future.

Ethical Approval

The guardian of the child patient signed informed consent to participate in the study before the study began and this study was conducted in accordance with the Declaration of

Helsinki. The Clinical Research Ethics Committee of the Children's Hospital of Nanjing Medical University approved the study (201907222-1), as all samples collected in this work were initially used to diagnose patient care without increasing the patient's medical costs and suffering.

Acknowledgments

This research was supported by the National Natural Science Foundation of China (16611840).

Disclosure

The authors report no conflicts of interest in this work.

References

- Logan LK. Carbapenem-resistant enterobacteriaceae: an emerging problem in children. *Clin Infect Dis*. 2012;55(6):852–859. doi:10.1093/cid/cis543
- WHO publishes list of bacteria for which new antibiotics are urgently needed; 2017. Available from: <https://www.who.int/news-room/detail/27-02-2017-who-publishes-list-of-bacteria-for-which-new-antibiotics-are-urgently-needed>. Accessed December 17, 2020.
- Guo Y, Hu FP, Zhu DM, et al. Antimicrobial resistance changes of carbapenem-resistant strains isolated from children. *Zhonghua Er Ke Za Zhi*. 2018;56(12):907–914. doi:10.3760/cma.j.issn.0578-1310.2018.12.005
- Zhang Y, Wang Q, Yin Y, et al. Epidemiology of carbapenem-resistant enterobacteriaceae infections: report from the China CRE network. *Antimicrob Agents Chemother*. 2018;62(2):e01882–17. doi:10.1128/AAC.01882-17
- Dong F, Lu J, Wang Y, et al. A five-year surveillance of carbapenemase-producing *Klebsiella pneumoniae* in a pediatric hospital in China reveals increased predominance of NDM-1. *Biomed Environ Sci*. 2017;30(8):562–569. doi:10.3967/bes2017.075
- Munoz-Price LS, Quinn JP. The spread of *Klebsiella pneumoniae* carbapenemases: a tale of strains, plasmids, and transposons. *Clin Infect Dis*. 2009;49(11):1739–1741. doi:10.1086/648078
- Clinical and Laboratory Standards Institute. *Performance Standards for Antimicrobial Susceptibility Testing. M100 -S28*. Wayne, PA: CLSI; 2018.
- Kahlmeter G, Brown D, Goldstein F, et al. European Committee on Antimicrobial Susceptibility Testing (EUCAST) technical notes on antimicrobial susceptibility testing. *Clin Microbiol Infect*. 2006;12(6):501–503. doi:10.1111/j.1469-0691.2006.01454.x
- Endimiani A, Carias LL, Hujer AM, et al. Presence of plasmid-mediated quinolone resistance in *Klebsiella pneumoniae* isolates possessing *blaKPC* in the United States. *Antimicrob Agents Chemother*. 2008;52(7):2680–2682. doi:10.1128/AAC.00158-08
- Yang J, Chen Y, Jia X, et al. Dissemination and characterization of NDM-1-producing acinetobacter pittii in an intensive care unit in China. *Clin Microbiol Infect*. 2012;18(12):E506–E13. doi:10.1111/1469-0691.12035
- Senda K, Arakawa Y, Ichiyama S, et al. PCR detection of metallo-beta-lactamase gene (*blaIMP*) in gram-negative rods resistant to broad-spectrum beta-lactams. *J Clin Microbiol*. 1996;34(12):2909–2913. doi:10.1128/JCM.34.12.2909-2913.1996
- Tsakris A, Pournaras S, Woodford N, et al. Outbreak of infections caused by *Pseudomonas aeruginosa* producing VIM-1 carbapenemase in Greece. *J Clin Microbiol*. 2000;38(3):1290–1292. doi:10.1128/JCM.38.3.1290-1292.2000
- Poirel L, Héritier C, Tolün V, Nordmann P. Emergence of oxacillinase-mediated resistance to imipenem in *Klebsiella pneumoniae*. *Antimicrob Agents Chemother*. 2004;48(1):15–22. doi:10.1128/AAC.48.1.15-22.2004
- Yu Y, Ji S, Chen Y, et al. Resistance of strains producing extended-spectrum beta-lactamases and genotype distribution in China. *J Infect*. 2007;54(1):53–57. doi:10.1016/j.jinf.2006.01.014
- Pérez-Pérez FJ, Hanson ND. Detection of plasmid-mediated AmpC beta-lactamase genes in clinical isolates by using multiplex PCR. *J Clin Microbiol*. 2002;40(6):2153–2162. doi:10.1128/JCM.40.6.2153-2162.2002
- Antachopoulos C, Iosifidis E. Colistin use in neonates and children with infections due to carbapenem-resistant bacteria. *Pediatr Infect Dis J*. 2017;36(9):905–907. doi:10.1097/INF.0000000000001655
- Quan J, Li X, Chen Y, et al. Prevalence of *mcr-1* in *Escherichia coli* and *Klebsiella pneumoniae* recovered from bloodstream infections in China: a multicentre longitudinal study. *Lancet Infect Dis*. 2017;17(4):400–410. doi:10.1016/S1473-3099(16)30528-X
- Wang Q, Wang X, Wang J, et al. Phenotypic and genotypic characterization of carbapenem-resistant Enterobacteriaceae: data from a longitudinal large-scale CRE study in China (2012–2016). *Clin Infect Dis*. 2018;67(suppl_2):S196–S205. doi:10.1093/cid/ciy660
- Andrade LN, Vitali L, Gaspar GG, Bellissimo-Rodrigues F, Martinez R, Darini AL. Expansion and evolution of a virulent, extensively drug-resistant (polymyxin B-resistant), QnrS1-, CTX-M-2-, and KPC-2-producing *Klebsiella pneumoniae* ST11 international high-risk clone. *J Clin Microbiol*. 2014;52(7):2530–2535. doi:10.1128/JCM.00088-14
- Zhu J, Sun L, Ding B, et al. Outbreak of NDM-1-producing *Klebsiella pneumoniae* ST76 and ST37 isolates in neonates. *Eur J Clin Microbiol Infect Dis*. 2016;35(4):611–618. doi:10.1007/s10096-016-2578-z
- Jin Y, Shao C, Li J, Fan H, Bai Y, Wang Y. Outbreak of multidrug resistant NDM-1-producing *Klebsiella pneumoniae* from a neonatal unit in Shandong Province, China. *PLoS One*. 2015;10(3):e0119571. doi:10.1371/journal.pone.0119571
- Hornsey M, Phee L, Wareham DW. A novel variant, NDM-5, of the New Delhi metallo-beta-lactamase in a multidrug-resistant *Escherichia coli* ST648 isolate recovered from a patient in the United Kingdom. *Antimicrob Agents Chemother*. 2011;55(12):5952–5954. doi:10.1128/AAC.05108-11
- Rahman M, Shukla SK, Prasad KN, et al. Prevalence and molecular characterisation of New Delhi metallo-beta-lactamases NDM-1, NDM-5, NDM-6 and NDM-7 in multidrug-resistant enterobacteriaceae from India. *Int J Antimicrob Agents*. 2014;44(1):30–37. doi:10.1016/j.ijantimicag.2014.03.003
- Kong Z, Cai R, Cheng C, et al. First reported nosocomial outbreak of NDM-5-producing *Klebsiella pneumoniae* in a neonatal unit in China. *Infect Drug Resist*. 2019;12:3557–3566. doi:10.2147/IDR.S218945
- Chiotos K, Hayes M, Gerber JS, Tamma PD. Treatment of carbapenem-resistant enterobacteriaceae infections in children. *J Pediatric Infect Dis Soc*. 2020;9(1):56–66. doi:10.1093/jpids/piz085
- Tian D, Pan F, Wang C, Sun Y, Zhang H. Resistance phenotype and clinical molecular epidemiology of carbapenem-resistant *Klebsiella pneumoniae* among pediatric patients in Shanghai. *Infect Drug Resist*. 2018;11:1935. doi:10.2147/IDR.S175584
- Zhou J, Yang J, Hu F, Gao K, Sun J, Yang J. Clinical and molecular epidemiologic characteristics of ceftazidime/avibactam-resistant carbapenem-resistant *Klebsiella pneumoniae* in a neonatal intensive care unit in China. *Infect Drug Resist*. 2020;13:2571. doi:10.2147/IDR.S256922
- Gao H, Liu Y, Wang R, Wang Q, Jin L, Wang H. The transferability and evolution of NDM-1 and KPC-2 co-producing *Klebsiella pneumoniae* from clinical settings. *EBioMedicine*. 2020;51:102599. doi:10.1016/j.ebiom.2019.102599

Infection and Drug Resistance

Dovepress

Publish your work in this journal

Infection and Drug Resistance is an international, peer-reviewed open-access journal that focuses on the optimal treatment of infection (bacterial, fungal and viral) and the development and institution of preventive strategies to minimize the development and spread of resistance. The journal is specifically concerned with the epidemiology of

antibiotic resistance and the mechanisms of resistance development and diffusion in both hospitals and the community. The manuscript management system is completely online and includes a very quick and fair peer-review system, which is all easy to use. Visit <http://www.dovepress.com/testimonials.php> to read real quotes from published authors.

Submit your manuscript here: <https://www.dovepress.com/infection-and-drug-resistance-journal>