



CORRIGENDUM

Overexpression of HOXB4 Promotes Protection of Bone Marrow Mesenchymal Stem Cells Against Lipopolysaccharide-Induced Acute Lung Injury Partially Through the Activation of Wnt/ β -Catenin Signaling [Corrigendum]

Lin S, Chen Q, Zhang L, et al. *J Inflamm Res.* 2021;14:3637–3649.

Control and BMSC^{WT}+LPS in the 0 h row in figure part C were duplicated. The correct Figure 2 is shown below.

The authors have advised Figure 2C on page 3641 is incorrect. Due to an error at the time of figure assembly

The authors apologize for this error and advise it does not affect the results of the paper.



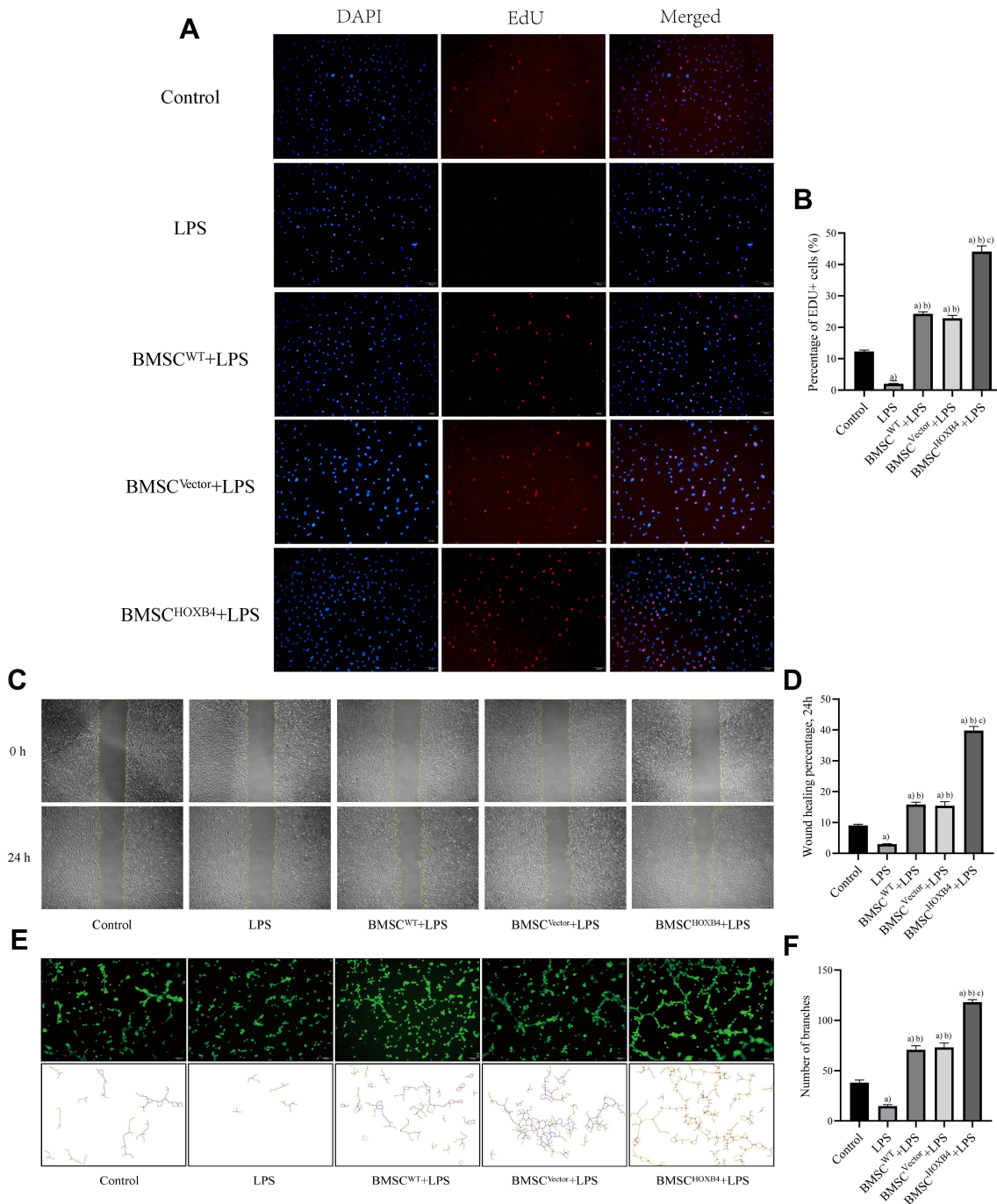


Figure 2 BMSC^{HOXB4} coculture promotes the proliferation, migration, and tube formation ability of ECs. **(A)** EdU was measured for EC proliferative capacity, of which the blue color indicated the nuclear localization and the red color indicated the proliferation-active cells (magnification 100×). **(B)** Quantitative analysis was conducted by calculating the percentage of proliferation-active cells, and the results suggested that BMSC^{HOXB4} coculture dramatically promoted EC proliferation capacity after LPS-induced injury compared to BMSC^{WT} and BMSC^{Vector} coculture groups. **(C)** The scratch assay was conducted to assess the migration capability of EC, and representative images of the scratches at different time points at 0 h and 24 h are shown (magnification 40×). **(D)** Quantitative analysis of the changes in the scratched areas was performed using Image J software, and results suggested that the migration ability of ECs was significantly increased in the BMSC^{HOXB4} coculture group compared to BMSC^{WT} and BMSC^{Vector} coculture groups. **(E)** Tube formation assay was performed to detect EC angiogenic capacity, and Calcein AM fluorescent dye was used to enhance the visibility of tube and network formation in Matrigel (magnification 100×), along with the trajectories of tubes and networks were also depicted accordingly. **(F)** Quantitative analysis suggested that coculture with BMSC^{HOXB4} significantly promoted the EC tube formation ability compared to that in BMSC^{WT} and BMSC^{Vector} coculture groups. Data were expressed as mean±SD (n=3). ^{a)}Compared to control group, *P* < 0.01; ^{b)}compared to LPS group, *P* < 0.01; ^{c)}compared to BMSC^{WT}+LPS group, *P* < 0.01.

Abbreviations: WT, wild-type; HOXB4, homeobox B4; BMSC, bone marrow mesenchymal stem cell; SD, standard deviation; EC, endothelial cell; EdU, 5-ethynyl-20-deoxyuridine.

Journal of Inflammation Research

Dovepress

Publish your work in this journal

The Journal of Inflammation Research is an international, peer-reviewed open-access journal that welcomes laboratory and clinical findings on the molecular basis, cell biology and pharmacology of inflammation including original research, reviews, symposium reports, hypothesis formation and commentaries on: acute/chronic inflammation; mediators of inflammation; cellular processes; molecular

mechanisms; pharmacology and novel anti-inflammatory drugs; clinical conditions involving inflammation. The manuscript management system is completely online and includes a very quick and fair peer-review system. Visit <http://www.dovepress.com/testimonials.php> to read real quotes from published authors.

Submit your manuscript here: <https://www.dovepress.com/journal-of-inflammation-research-journal>