

The National Danish Cardiac Arrest Registry for Out-of-Hospital Cardiac Arrest – A Registry in Transformation

Theo Walter Jensen^{1,2}, Stig Nikolaj Blomberg^{1,2}, Fredrik Folke¹⁻³, Søren Mikkelsen^{4,5}, Martin Rostgaard-Knudsen⁶, Palle Juulsgaard⁷, Erika Frishknecht Christensen^{6,8}, Christian Torp-Pedersen^{9,10}, Freddy Lippert^{1,2}, Helle Collatz Christensen^{1,2,11,12}

¹Research, Copenhagen Emergency Medical Services, Copenhagen, Denmark; ²Department of Clinical Medicine, Faculty of Health and Medical Sciences, University of Copenhagen, Copenhagen, Denmark; ³Department of Cardiology, Herlev and Gentofte Hospital, Copenhagen, Denmark; ⁴Emergency Medical Services, The Region of Southern Denmark, Odense, Denmark; ⁵Department of Regional Health Research, University of Southern Denmark, Odense, Denmark; ⁶Emergency Medical Services, North Region of Denmark, Aalborg, Denmark; ⁷Emergency Medical Services, Central Denmark Region, Viborg, Denmark; ⁸Center for Prehospital and Emergency Research, Aalborg University Hospital and Aalborg University, Aalborg, Denmark; ⁹Department of Cardiology and Clinical Investigation, Nordsjællands Hospital, Hillerød, Denmark; ¹⁰Department of Cardiology, Aalborg University Hospital, Aalborg, Denmark; ¹¹Emergency Medical Services, Naestved, Region Zealand, Denmark; ¹²Danish Clinical Quality Program (RKKP) • National Clinical Registries, Copenhagen, Denmark

Correspondence: Helle Collatz Christensen, Email helle.collatz.christensen.02@regionh.dk

Aim of the Database: The aim of the Danish Cardiac Arrest Registry is to monitor the quality of prehospital cardiac arrest treatment, evaluate initiatives regarding prehospital treatment of cardiac arrest, and facilitate research.

Study Population: All patients with prehospital cardiac arrest in Denmark treated by the emergency medical services in whom resuscitation or defibrillation has been attempted.

Main Variables: The Danish Cardiac Arrest Register records descriptive and qualitative variables as outlined in the “Utstein” template for reporting out-of-hospital-cardiac arrest. Main variables include whether the case was witnessed, whether the cardiac arrest was electrocardiographically monitored, the timing of cardiopulmonary resuscitation, and the timing of the first analysis of the cardiac rhythm. The outcome measures are the status of the patient at handover to the hospital, return of spontaneous circulation, and 30-day survival after event.

Database Status: The Danish Cardiac Arrest Registry was established in June 2001, and all Danish emergency medical services are reporting to the database.

Conclusion: The Danish Cardiac Arrest Registry is among the oldest Danish national clinical registries, with a high quality of clinical data and coverage. This registry provides the prerequisite for all research on out-of-hospital cardiac arrest research in Denmark and is essential for monitoring and improving the quality of care for patients suffering from out-of-hospital cardiac arrest.

Keywords: cardiac arrest, OHCA, cardiopulmonary resuscitation, Denmark, quality, survival

Introduction

The Danish Cardiac Arrest Registry (DCAR) for Out-of-Hospital Cardiac Arrest (OHCA) collects data on prehospital treatment and post-event outcomes for patients with OHCA in Denmark since 2001. The registry was implemented to provide a tool for benchmarking the initiatives in the treatment of prehospital cardiac arrest. The objective of this paper is to describe the register, the results from the register and the quality indicators associated to the registry. The results obtained from the registry have supported some central initiatives to increase survival in the treatment of Danish OHCA.

Among the examples is the continuous monitoring of bystander-assisted cardiopulmonary resuscitation (CPR) rate, which serves as a vital indicator for large-scale national programs to increase survival.^{1,2} Furthermore, specific indicators related to the treatment of patients with OHCA have been developed. Therefore, to describe the use of automatic external

defibrillators (AED) by bystanders or citizen responders, the registry has implemented an indicator on the use of AED before the arrival of the Emergency Medical Services (EMS) personnel. Indicators such as this have enabled the national steering committee of the registry to support campaigns nudging the society to increase the public willingness to intervene in cases of OHCA by providing numbers and figures on the activity of citizen responders activity. This, undoubtedly, has led to an increase in the survival of patients suffering from OHCA.¹ See Figure 1.

The data available from the registry also enabled reports documenting an improved overall survival of all patients with OHCA significantly, and in particular of patients in public spaces with easy access to AEDs.¹ See Figure 2.

The registry has further spurred different projects in Denmark: A National AED register providing an overview of all publicly available AEDs has been implemented.³ This registry has been made available to all emergency medical dispatch centers (EMDC). Thus, in cases of OHCA, the dispatcher can guide bystanders and citizen responders over the phone to access the nearest AED and bring it to the scene of the cardiac arrest.⁴ This effort further led to a different project where the individual EMDC could activate citizen responders to go to the scene of the cardiac arrest or to pick up

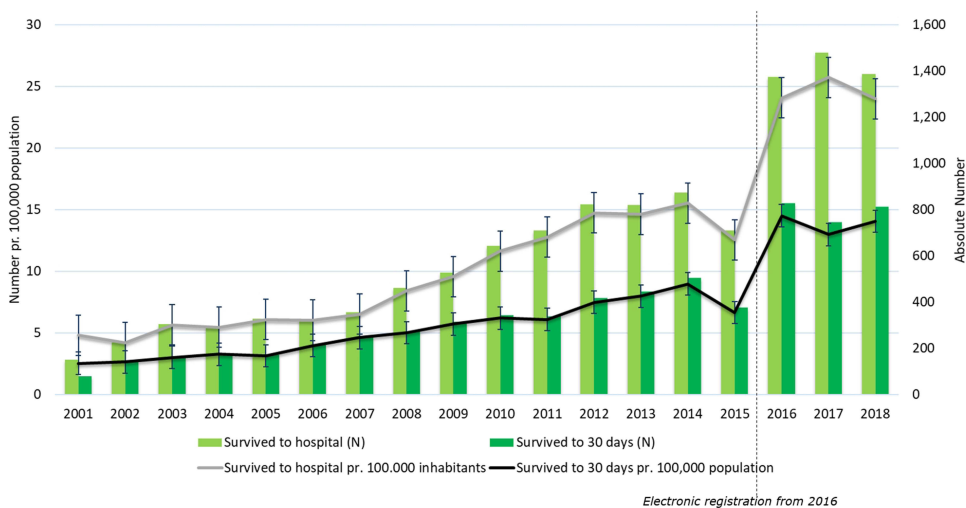


Figure 1 Number of survivors of cardiac arrest outside hospital per 100,000 inhabitants and in absolute numbers 2001–2018.

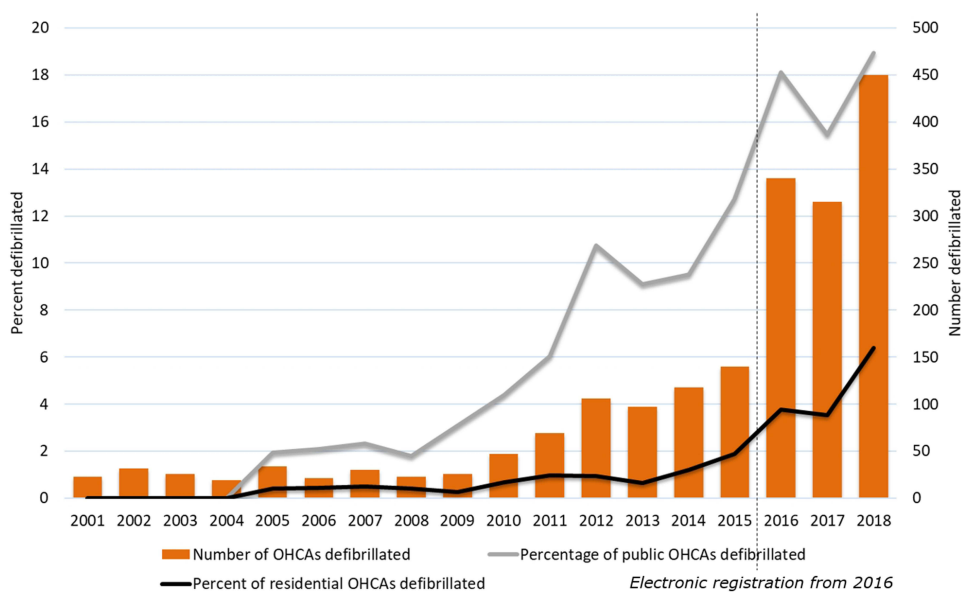


Figure 2 Number of AED used in public and residential areas from 2001–2018.

an AED on their way to the scene of the OHCA. If a citizen responder arrived at the scene before the ambulance, the citizen responder could thus contribute to the treatment of the patient by defibrillating patients with shockable rhythm and perform CPR. This project, the national Heart Runner Project, is presently awaiting evaluation that will be based on data from the DCAR. Yet another project inspired by the results from the registry was a study on improving recognition of OHCA by medical dispatchers over the phone.⁵ The use of artificial intelligence (AI) on the actual conversations to 1-1-2 emergency helpline has proven so good in recognising over 85% of all OHCA that it has been decided to implement this AI model in all EMSs in Denmark to assist the medical dispatchers in their work.^{2,6} Furthermore, the registry has been used in formal quality assurance projects.⁷

All Danish emergency medical services are reporting to the registry using a standardized electronic reporting system based via a tablet for data entry at the scene of the cardiac arrest (see Figure 3). During the last 20 years, the register has undergone a transition from manual data collection (2001–2015) to the use of digital, online data registering (from 2016). The registry has been accepted as a National Clinical Registry in the program of the National Clinical Registries under the Danish Health Law. Moreover, the results of the quality measured on bystander CPR, use of a public AED and the treatment given by the EMS personnel have improved a lot over the years.¹ Delivery of data to the registry has been changed from paper-based forms that were electronically entered into the database. These data are now automatically extracted from prehospital medical records allowing daily delivery of reliable data back to each regional EMS organization and is in scope for the register to work upon as a part of the National Clinical Registries.⁸ Immediate detection of particular trends in the treatment of OHCA has been made possible. In collaboration with a wide range of bodies, the national steering committee of the DCAR together with the Danish National Clinical Registries has attempted to make the DCAR more resilient and more comparable to other national registers in Europe and the world. In 2019,

Action before arrival			Condition upon arrival				Action on the spot			
Witnessed			Breathing				Start of CPR by crew			
Yes	No	[indicate time]	Normal	Difficult	Agonal	None	Yes	No	[indicate time]	
Begin CPR			Rhythm		Glasgow coma score		First rhythm analyzed by EMS personnel			
Yes	No	[indicate time]	[click here to enter]		[click here to enter]		Yes	No	[indicate time]	
Defibrillation			Cardiac arrest witnessed				Did EMS personnel defibrillate?			
		No	[indicate time]	Yes	No	Yes	No	Yes	No	[indicate time]
AED brought to hospital?			Status after action				Energy		Amount of times	
Yes	No		ROSC				[click here to enter]		[click here to enter]	
			Yes	No	[indicate time]					
Place of cardiac arrest			Returned respiration				AED modus			
[click here to enter]			Yes	No	[indicate time]		Yes	No		
Patients condition upon arrival at hospital			Continued cardiac arrest				Dr. Involved before arrival to hospital			
[click here to enter]			Yes	No	[indicate time]		[click here to enter]			
			Mechanical compression							
			Yes	No	[indicate time]					

Figure 3 The section of the tablet used in the ambulances for entering data to the Danish Cardiac Arrest Registry in 2020.

a study from the International Liaison Committee on Resuscitation (ILCOR) showed that in comparison with other national registries on OHCA, the DCAR does not quite live up to the Utstein Guidelines for registration of OHCA⁹ and the international development in the treatment of OHCA. In the paper, ILCOR pointed out that especially the treatment as well as the rehabilitation in the hospitals was needed as a part of the registry. Also, variables on AEDs and registering the specifics of the resuscitative effort need to be improved.

The Danish Cardiac Arrest Register records a set of descriptive and quality of care variables according to international standards. This is a description of these variables and the indicators as they are at the time of writing as well as the intentions from the steering committee of the register to increase the quality on the hospital treatment of the patients.

Method Section

Setting

Denmark has a population of 5.8 million inhabitants (Statistics Denmark, Q4 – 2018). The geographical area of Denmark is 42.933 square kilometers. Healthcare is provided by The Danish National Health Service as a tax-supported public service. Redistributionist taxation finances approx. 85% of overall health care costs, including access to general practitioners (GPs), EMS, hospitals, outpatient specialty clinics, and partial reimbursement of prescribed medications. Acute disease and emergencies are also covered by the National Health Services. Therefore, EMS, as well as hospitalization, is without immediate cost for the person involved.¹⁰

In Denmark, every resident is assigned a personal identification number in The Danish Civil Registration System.¹¹ This nationwide registry of administrative information was established on April 2, 1968. It assigns a unique ten-digit Civil Personal Register Number (CPR-number) to all persons residing in Denmark.¹¹ This number is used for identification and registration in public and private services. Having this system allows for exact individual-level record linkage of all Danish registries facilitating research.¹² For patients without Danish citizenship, a temporary CPR-number will be assigned upon contact with the public health care system.

Data Collection

Inclusion in the DCAR takes place if a patient for a cardiac arrest outside of the hospitals receives CPR or is defibrillated by bystander or EMS personnel.^{9,13} Data is collected from the section on the electronic tablet used by EMS personnel to collect daily medical records in their everyday work. See [Figure 3](#).

The inclusion and coverage of cardiac arrest cases are regarded as high because the EMS system is activated for all emergencies concerning cardiac arrest. Exclusion criteria are cases with late signs of death (decomposition, rigor mortis or livor mortis) or lesions incompatible with sustained life or if the patients did not have a cardiac arrest but had another reason to be unconscious such as suffering from a drug overdose, a stroke, or where resuscitative efforts are obviously futile from the onset. Since the implementation of the Cardiac Arrest Registry in 2001, EMS personnel have been required to complete a short case report paper form for the Danish Cardiac Arrest Register in every out-of-hospital cardiac. The paper registrations were collected and manually entered the registry. In 2015, an electronic medical record was introduced nationally in all ambulances and medical critical care units.¹⁰ Data were to be registered on an electronic tablet with internet connection, whenever an OHCA was treated by EMS personnel. Through the year 2016, the short paper-based form was gradually abandoned. Data is now recorded in immediate connection to the OHCA and acts as a documentation of the treatment and outcome. Data on long-term survival (30-days) is collected from the Civil Personal Register and linked to the DCAR via the CPR-number.¹¹

Ethics Statement

Retrospective registry research does not require ethical approval by Danish law. The Danish Cardiac Arrest Registry is a part of the National Registries (with health records) collected and administered under the legislation of the Danish Health law. In this, the legislation sanctions the collection of health data on every person, who has been treated with the diseases described, without obtaining informed consent (85 different areas of disease are currently described). These data

must be used for the development of quality indicators formed in a national consensus format and exposed to every professional who has reported patients to the register.

Variables

The variables included in the register have been adjusted in accordance with other registries such as Utstein¹⁴ and Cardiac Arrest Registry to Enhance Survival¹⁵(CARES). The variables are further defined in alignment with the Utstein criteria on OHCA and have been continuously modified accordingly to the Utstein criteria over the years. See Table 1 for the present variables.

The tabulation in the electronic medical record used from 2015 and onwards contains the same variables in the same order to accommodate recognition and ease when filling it in. Variables contain information on the identification number of the prehospital response unit (ambulance, Mobile Critical Care Unit, physician-manned Helicopter), CPR-number, the hospital to which the patient is subsequently referred, the location of the incident, time, whether the arrest was witnessed by laymen or EMS, any treatment given before the arrival of EMS personnel, involvement of a physician in prehospital

Table 1 Variables in the Danish Cardiac Arrest Registry

Variable Name [Abbreviated, Danish]	Definition of Variable
EVA	Medical record number assigned by the dispatch centre. This variable has different formats during the years
CPR	Civil Personal Registry number of the patient where available
Hospital	Receiving hospital
Sted	Place of the cardiac arrest
Dato stop	Date for creation of the medical record
HLR	Was cardiopulmonary resuscitation attempted prior the arrival of the EMS personnel.
Bevid	Was the cardiac arrest witnessed by bystanders?
EMS_HLR	Did ambulance personnel start cardiopulmonary resuscitation
Defibi	Was the patient treated with DC shock BEFORE the arrival of the ambulance
Defibitid	Timestamp of DC-shock by bystanders prior to ambulance arrival
DOC	Was a medical doctor involved in resuscitation BEFORE arrival to the hospital
BevidEMS	Did the EMS personnel observe that the patient went into arrest
EKG	Did the ambulance personnel analyze the patient's cardiac rhythm
TidRytmeCheck	Timestamp of rhythm analysis
EMSDC	Did the ambulance personnel defibrillate the patient
EMSDCTid	Timestamp of EMS provided defibrillation
Irytme	Initial cardiac rhythm
ROSCInt	Did the patient at any time get a return of spontaneous circulation (ROSC)
ROSCtid	Timestamp for ROSC
Status_Ny	Patient's condition upon arrival to the hospital
Responstid	Time of arrival of the first prehospital resource at the scene of the cardiac arrest
Geo-data	Geo-coordinates for the place of the cardiac arrest

treatment, the observations made by and treatment given by the EMS staff, and finally, the condition of the patient upon arrival to the hospital (see Table 1 for more detailed information). All fields are required to be filled in with the option “No” if the question asked is irrelevant to the patient’s treatment.

Indicators

In Table 2, the indicators presently describing and measuring the entire process of events in the treatment of an OHCA are shown. There are indicators to measure the survival of patients to the hospital and 30-days survival in certain

Table 2 The Indicators in the Danish Cardiac Arrest Registry

Indicator	Measurement	Type
Number of Out-of-Hospital cardiac arrests	All patients who are registered with a OHCA and a valid CPR	Absolute number and incidence ^a
The proportion of patients treated with Out-of-Hospital cardiac arrest in their own home	All patients with OHCA in their home/All OHCA ^b	Proportion
The proportion of patients treated with Out-of-Hospital cardiac arrest in a public space	All patients with OHCA in a public space/All OHCA ^b	Proportion
The proportion of witnessed Out-of-Hospital cardiac arrests	All patients with OHCA where the OHCA is witnessed by a layperson (bystander)/All OHCA ^b	Proportion
The proportion of Out-of-Hospital cardiac arrests witnessed by EMS personnel	All patients with OHCA where the OHCA is witnessed by EMS personnel (ambulance personnel, doctor in a car or helicopter)/All OHCA ^b	Proportion
The proportion of Cardiopulmonary resuscitation given by a bystander or a first responder	All patients who receive Cardiopulmonary resuscitation from a bystander or a citizen first responder (Heartrunner)/All OHCA ^b	Proportion
The proportion of patients treated with a defibrillator before the arrival of EMS personnel	All patients who are treated with a defibrillator before the arrival of an ambulance/All OHCA ^b	Proportion
Time to the arrival of the ambulance (response-time) to patients with Out-of-Hospital cardiac arrest	Time from dispatch of a vehicle to the arrival of the first prehospital resource at the scene of the OHCA/all 1-1-2-incidents	Median time (and Interquartile Range)
The proportion of survivors after Out-of-Hospital cardiac arrest	All patients who are treated for OHCA and a) has ROSC before arrival or upon arrival to the hospital/ All OHCA ^b b) has survived at least 30 days after the date of OHCA/All OHCA ^b	Proportion and incidence ^a
The proportion of survivors after Out-of-Hospital cardiac arrest for the patients suffering Out-of-Hospital cardiac arrest with a shockable rhythm and witnessed (“Utstein” population)	“Utstein-population”: All patients who are treated for OHCA, has a witnessed arrest and the first measured rhythm is shockable a) has ROSC before arrival or upon arrival to the hospital/ All OHCA ^b b) has survived at least 30 days after the date of OHCA/All OHCA ^b	Proportion and incidence ^a
The proportion of survivors after Out-of-Hospital cardiac arrest with initial non-shockable rhythm	All patients who are treated for OHCA and has an initial non-shockable rhythm a) has ROSC before arrival or upon arrival to the hospital/ All OHCA ^b b) has survived at least 30 days after the date of OHCA/All OHCA ^b	Proportion and incidence ^a

Notes: ^aIncidence derived per 100,000 inhabitants. ^bAll patients who are registered with a OHCA and a valid CPR.

Table 3 New Indicators and Variables Suggested for the Danish Cardiac Arrest Registry

Indicator Text	Measurement	New Variable
The proportion of survivors after Out-of-Hospital cardiac arrest with initial non-shockable rhythm	All patients who are treated for OHCA and has an initial non-shockable rhythm and have survived at least 30 days after the date of OHCA/All OHCA ^a	Initial rhythm described as Sinus rhythm, Bradycardia, tachycardia, Atrial defibrillation, 3. Degree AV blockage, Pulseless electrical activity (PEA), Asystole
Time from the telephone call to the emergency medical dispatch center till the arrival of the ambulance with the patient (response-time) at the hospital	Time from registered telephone call at the EMS dispatch to arrival with the patient at the hospital	Time and date for incident record creation, Time and date for arrival to the hospital
The proportion of AED brought to the patient but did not administer a shock	Number of AED brought to the scene of the OHCA, placed on the patient, but no shock delivered/All OHCA ^a	AED forwarded to the scene, but no shock was delivered
The proportion of Out-of-Hospital cardiac arrests with non-medical cause	Number of OHCA with no medical cause/All OHCA ^a	Description of etiology of cardiac arrest: Trauma, Drug, overdose, Drowning, Electrocutation, or Asphyxia

Note: ^aAll patients who are registered with a OHCA and a valid CPR.

categories. Moreover, there is also an indicator for ambulance time to arrive at the scene (median time). Documentation of variables and indicators in the register can be found at <https://www.rkkp-dokumentation.dk/> where new and old versions of the register are held.

In the future, the steering committee of the registry intends to increase the number of variables in several areas. The suggested new indicators are shown in [Table 3](#).

At present, the data for the DCAR is supplied for central analysis once every year where a yearly report is made to illustrate the treatment and outcomes of the past year (WWW.OHCA.DK). The goal of the national steering committee is to have data available every month for quality assessment and outcome measures.

Discussion

In 2001–2020 a total of 57,000 patients with OHCA have been included in the register. These data have proven to be useful not only in benchmarking daily activity but also when evaluating the outcome of local or national projects in OHCA treatment. The register steering committee aims to implement further indicators on the treatment and thereby the outcome of OHCA by increasing the number of indicators in the next coming years.

Other registries have undergone the development from paper to electronic records similar to the DCAR has with the same success^{16,17} In 2016 the validation of data became more substantial and additional variables were added. Survival after 30 days has increased throughout the years along with the rising incidence of OHCA, and in 2018, the 30-day survival following OHCA was 16%. The core findings of the register in 2018 are a substantial yearly increase in bystander CPR to 77%, an increase in the use of AED before ambulance arrival to 9.3%, and an increase in survival (ROSC on arrival to hospital) to 24%. In the selected group of patients, the Utstein population, patients with witnessed cardiac arrest with a shockable rhythm, survival increased from 12.5% in 2001 to 62% in 2018. In the early years of the registry, the average age of the patients was 69 years but as the inclusion of cases rose, the age has stabilized at 72 years.^{1,8,18} During the years 2001–2018, the 30-day survival has increased ([Figure 2](#)). However, there is a non-significant decrease in both 30-day survival and immediate survival in the years 2017 and 2018, probably reflecting a change in registration practice following the transition to an electronic medical record.¹

The completeness of the register is high, as the incidence of OHCA was 93 per 100,000 inhabitants in 2018. A comparison was made in a European collaboration, the EURECA study, where the Danish incidences were among the highest.¹⁹ The registry has been used in numerous publications and are highly active (see [Appendix 1](#) Publications made with data from the DCAR in 2021).

Strengths and Limitations

A key strength of the registry is the complete national coverage of all people treated for OHCA in Denmark. This allows for calculations representative of national epidemiological measures and benchmarks. Another strength is the Danish Civil Personal Registration System, where all citizens are identified. Thus, it is possible to have an almost complete follow-up. The latest data from the DCAR comprise the years 2001 through 2018, covering a period when the registration has been transferred from paper-based case record forms to electronic registration. The centralized education of the validators, the possibility to draw data out of the entire medical record uniformly and the use of electronic medical records enables an even more thorough validation of data than the paper form did. Thus, data from 2016 and forward are therefore not necessarily immediately comparable to the previous years. In the new electronic medical records, several new variables can be used to widen the perspective of the registry. Among these new variables are medication administered, time spent at the scene, or the number of shocks delivered during resuscitation.

A limitation to the registry is the measurement of data completeness. There are many public registries but none of these describe the area of EMS or OHCA. Over the years, we have experienced an increase in the number of reported OHCA without a markedly effect on the indicators. This could indicate underreporting in the initial years. The inclusion criteria for registering an OHCA in the DCAR, namely OHCA with either non-professional or professional resuscitation attempts, may further influence the number of registered OHCA in Denmark. The increased willingness from the general population to initiate CPR on any person who falls unconscious onto the ground has probably changed the number of patients included in the registry.

A Registry Steering Committee is assigned to the registry by the five regional EMS', the national scientific societies, and other stakeholders. The major role of the committee is to assure national consensus on the quality measures for the treatment and outcome of OHCA, to assure a proper framework for the register, to oversee the process of data collection, to develop the means of quality improvement, and to approve research projects that require the use of data from the registry.

Data from the DCAR are available upon reasonable request. More can be learned by entering this website: WWW.OHCA.DK. Here, all the links to the steering committee to request the relevant data can be found. To ascertain data from the registry, a detailed protocol for the proposed study and supplemental information about the funding and the scientific resources available to conduct the study should be forwarded.

Most of the external funding required for the DCAR has been provided by The TrygFoundation. Grants are provided to maintain, develop and report national data, to support data processing, as well as to financing associated Ph.D. students. In addition, the TrygFoundation supports the dissemination of the annual report and its results in connection to the publication. The TrygFoundation is a Danish non-profit private foundation with core areas that include safety, health, and well-being.

Conclusion

The Danish cardiac arrest registry has been used to work with the quality of the resuscitative effort performed prehospitally, or outside of the hospitals, for 20 years. Between 2001 and 2021, the number of bystanders who have performed CPR in OHCA before the arrival of the ambulance has tripled. Coincidentally, the overall survival has tripled. The registry has recently been accepted as a national clinical registry within the National Clinical Registries, and through this collaboration, further improvements will be sought by the national steering committee in the coming years.

Acknowledgments

A very special thanks to the Danish Cardiac Arrest Registry Group: Members of the collaborative group, Danish Cardiac Arrest Registry Group, are Gunhild Kjærgaard-Andersen, Louise Milling, René Arne Bergmann, Heinrich Dedenroth Larsen, Lars Borup, Theo Walther Jensen, Mathias Geldermann Holgersen, Stig Nikolaj Fasmer Blomberg, Julie Linding Bogh Kjerulff, Kristian Bundgaard Ringgren and Kenneth Lübcke. All members of the Danish Cardiac Arrest Registry validation group are affiliated to The Danish Clinical Quality Program, National Clinical Registries, Copenhagen, Denmark.

Special thanks to the ambulance staff and physicians in the emergency medical services in Denmark that have collected data for the Danish Cardiac Arrest Registry. The documentation is important and without it, the recorded monitoring of real improvements would not have been possible.

This work is supported by the TrygFoundation (TrygFonden), who has supported the Danish Cardiac Arrest Registry in the collection and analysis of 18 years of data.

Disclosure

Professor Christian Torp-Pedersen reports grants from Bayer, grants from Novo Nordisk, outside the submitted work.

The Copenhagen Emergency Medical Services have received unrestricted grants from the Laerdal Foundation. The TrygFoundation has supported a large number of projects, where several of the authors have participated. None of these occurrences has influenced data collection, data processing, analysis, or interpretation of data.

The authors report no other conflicts of interest in this work.

References

1. Ringreen KC, Schoenau L, Lippert F, et al. Yearly report for the Danish Cardiac Arrest Registry 2016–2018 [Årsrapport for Dansk Hjertestop Register 2016–2018]; August 16, 2018. Available from: <https://hjertestopregister.dk/wp-content/uploads/2019/11/Dansk-Hjertestopregister-2018-2.pdf>. Accessed March 9, 2022.
2. Blomberg SN, Christensen HC, Lippert F, et al. Effect of machine learning on dispatcher recognition of out-of-hospital cardiac arrest during calls to emergency medical services: a randomized clinical trial. *JAMA Netw Open*. 2021;4(1):e2032320–e2032320. doi:10.1001/jamanetworkopen.2020.32320
3. Karlsson L, Hansen CM, Wissenberg M, et al. Automated external defibrillator accessibility is crucial for bystander defibrillation and survival: a registry-based study. *Resuscitation*. 2019;136:30–37. doi:10.1016/j.resuscitation.2019.01.014
4. Andelius L, Malta Hansen C, Lippert FK, et al. Smartphone activation of citizen responders to facilitate defibrillation in out-of-hospital cardiac arrest. *J Am Coll Cardiol*. 2020;76(1):43–53. doi:10.1016/j.jacc.2020.04.073
5. Viereck S, Møller TP, Ersbøll AK, et al. Recognising out-of-hospital cardiac arrest during emergency calls increases bystander cardiopulmonary resuscitation and survival. *Resuscitation*. 2017;115:141–147. doi:10.1016/j.resuscitation.2017.04.006
6. Blomberg SN, Folke F, Ersbøll AK, et al. Machine learning as a supportive tool to recognize cardiac arrest in emergency calls. *Resuscitation*. 2019;138:322–329. doi:10.1016/j.resuscitation.2019.01.015
7. Gram KH, Præst M, Laulund O, Mikkelsen S. Assessment of a quality improvement programme to improve telephone dispatchers' accuracy in identifying out-of-hospital cardiac arrest. *Resuscitation Plus*. 2021;6:100096. doi:10.1016/j.resplu.2021.100096
8. Ringreen KC, Schoenau L, Lippert F, et al. Yearly report on the Danish Cardiac Arrest Registry [årsrapport for Dansk Hjertestop Register] (2020); October 16, 2021. Available from: https://hjertestopregister.dk/wp-content/uploads/2022/01/Dansk-Hjertestopregister-aarsrapport-2020_opdateret-jan21.pdf. Accessed March 11, 2022.
9. Kiguchi T, Okubo M, Nishiyama C, et al. Out-of-hospital cardiac arrest across the World: first report from the International Liaison Committee on Resuscitation (ILCOR). *Resuscitation*. 2020;152:39–49. doi:10.1016/j.resuscitation.2020.02.044
10. Lindskou TA, Mikkelsen S, Christensen EF, et al. The Danish prehospital emergency healthcare system and research possibilities. *Scand J Trauma Resusc Emerg Med*. 2019;27(1):100. doi:10.1186/s13049-019-0676-5
11. Schmidt M, Pedersen L, Sørensen HT. The Danish civil registration system as a tool in epidemiology. *Eur J Epidemiol*. 2014;29(8):541–549. doi:10.1007/s10654-014-9930-3
12. Frank L. When an entire country is a cohort. *Science*. 2000;287(5462):2398–2399. doi:10.1126/science.287.5462.2398
13. Akahane M, Tanabe S, Ogawa T, et al. Characteristics and outcomes of pediatric out-of-hospital cardiac arrest by scholastic age category. *Pediatr Crit Care Med*. 2013;14(2):130–136. doi:10.1097/PCC.0b013e31827129b3
14. Eisenberg MSL, Castren M, Moor F, et al. Acting on the Call. 2018 update from the global resuscitation alliance – report; April, 2018. Available from: https://www.globalresuscitationalliance.org/wp-content/pdf/acting_on_the_call.pdf. Accessed June, 2020.
15. McNally B, Robb R, Mehta M, et al. Out-of-hospital cardiac arrest surveillance—cardiac arrest registry to enhance survival (CARES), United States, October 1, 2005–December 31, 2010. *MMWR Morb Mortal Wkly Rep*. 2011;60(8):1–19.
16. Odone A, Buttigieg S, Ricciardi W, Azzopardi-Muscat N, Staines A. Public health digitalization in Europe: EUPHA vision, action and role in digital public health. *Eur J Public Health*. 2019;29(Supplement_3):28–35. doi:10.1093/eurpub/ckz161
17. Taber N, Mehmood A, Vedagiri P, Gupta S, Pinto R, Bachani AM. Paper versus digital data collection methods for road safety observations: comparative efficiency analysis of cost, timeliness, reliability, and results. *J Med Internet Res*. 2020;22(5):e17129. doi:10.2196/17129
18. Ringreen KC, Schoenau L, Lippert F, et al. Yearly report for the Danish Cardiac Arrest Registry [Årsrapport for Dansk Hjertestop Register] (2019); October 16, 2020. Available from: https://hjertestopregister.dk/wp-content/uploads/2020/12/%C3%85rsrapport_Dansk_Hjertestopregister_2019.pdf. Accessed March 11, 2022.
19. Gräsner J-T, Lefering R, Koster RW, et al. EuReCa ONE–27 Nations, ONE Europe, ONE Registry: a prospective one month analysis of out-of-hospital cardiac arrest outcomes in 27 countries in Europe. *Resuscitation*. 2016;105:188–195. doi:10.1016/j.resuscitation.2016.06.004

Clinical Epidemiology

Dovepress

Publish your work in this journal

Clinical Epidemiology is an international, peer-reviewed, open access, online journal focusing on disease and drug epidemiology, identification of risk factors and screening procedures to develop optimal preventative initiatives and programs. Specific topics include: diagnosis, prognosis, treatment, screening, prevention, risk factor modification, systematic reviews, risk & safety of medical interventions, epidemiology & biostatistical methods, and evaluation of guidelines, translational medicine, health policies & economic evaluations. The manuscript management system is completely online and includes a very quick and fair peer-review system, which is all easy to use.

Submit your manuscript here: <https://www.dovepress.com/clinical-epidemiology-journal>