

Correlation Between Postpartum Myometrial Elasticity and Obstetric Complications in Pregnant Women with Gestational Diabetes Mellitus [Corrigendum]

Jin J, Xia H, Su Y, et al. *J Multidiscip Healthc.* 2023;16:4139-4147.

The authors wish to correct [Figure 1](#) on page 4143 and [Figure 2](#) on page 4144 after it came to their attention an error had been made during the process of composing images.

The corrected [Figure 1](#) is shown below:

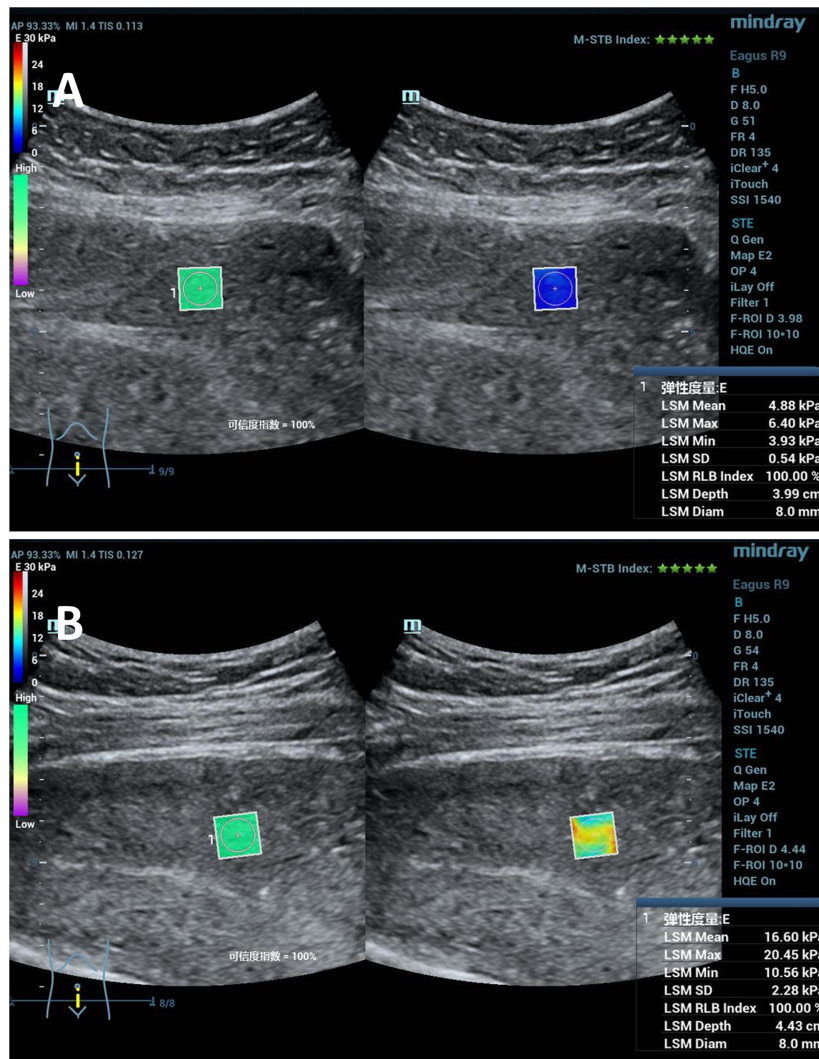


Figure 1 Continued.

Journal of Multidisciplinary Healthcare downloaded from <https://www.dovepress.com/> For personal use only.

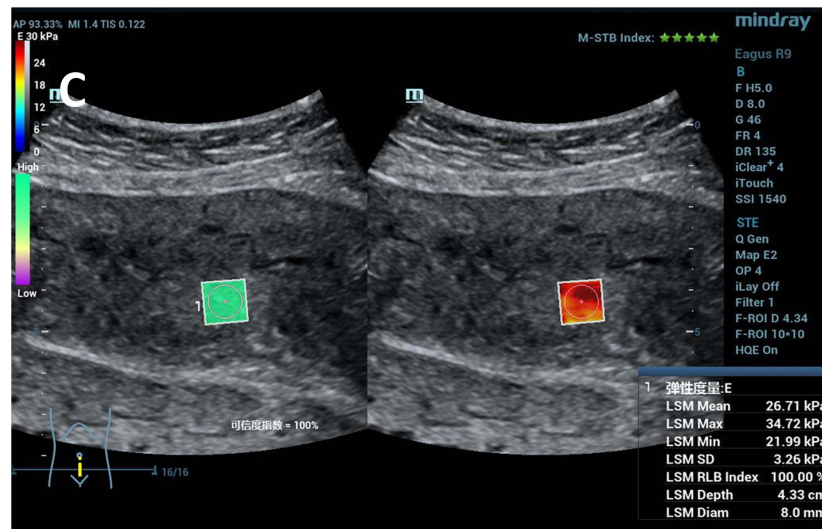


Figure 1 SWVE images of postpartum anterior uterine walls.

Notes: (A). The SWVV of 4.88kPa in the postpartum anterior uterine wall for normal pregnant woman with the placenta not located on the anterior wall during pregnancy. (B). The SWVV of 16.60kPa in the postpartum anterior uterine wall for normal pregnant woman with the placenta located on the anterior wall during pregnancy. (C). The SWVV of 26.71 kPa in the postpartum anterior uterine wall for pregnant woman complicated by diabetes mellitus with the placenta located on the anterior wall during pregnancy.

The corrected Figure 2 is shown below:

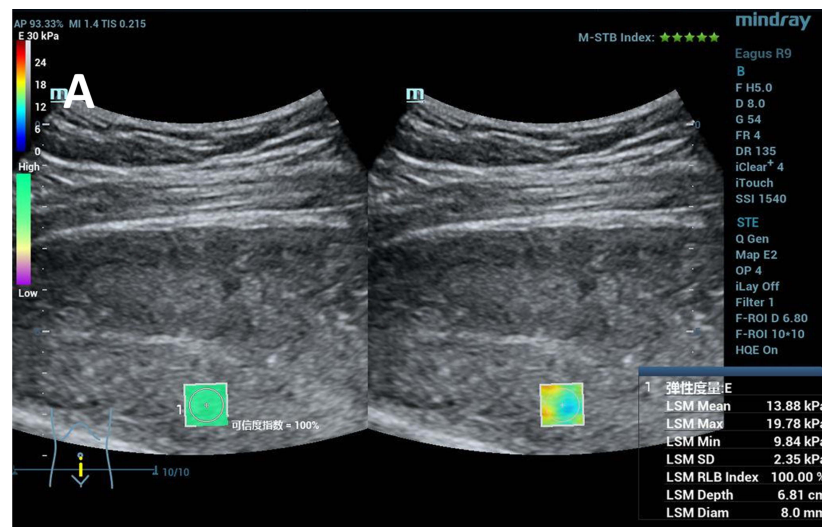


Figure 2 Continued.

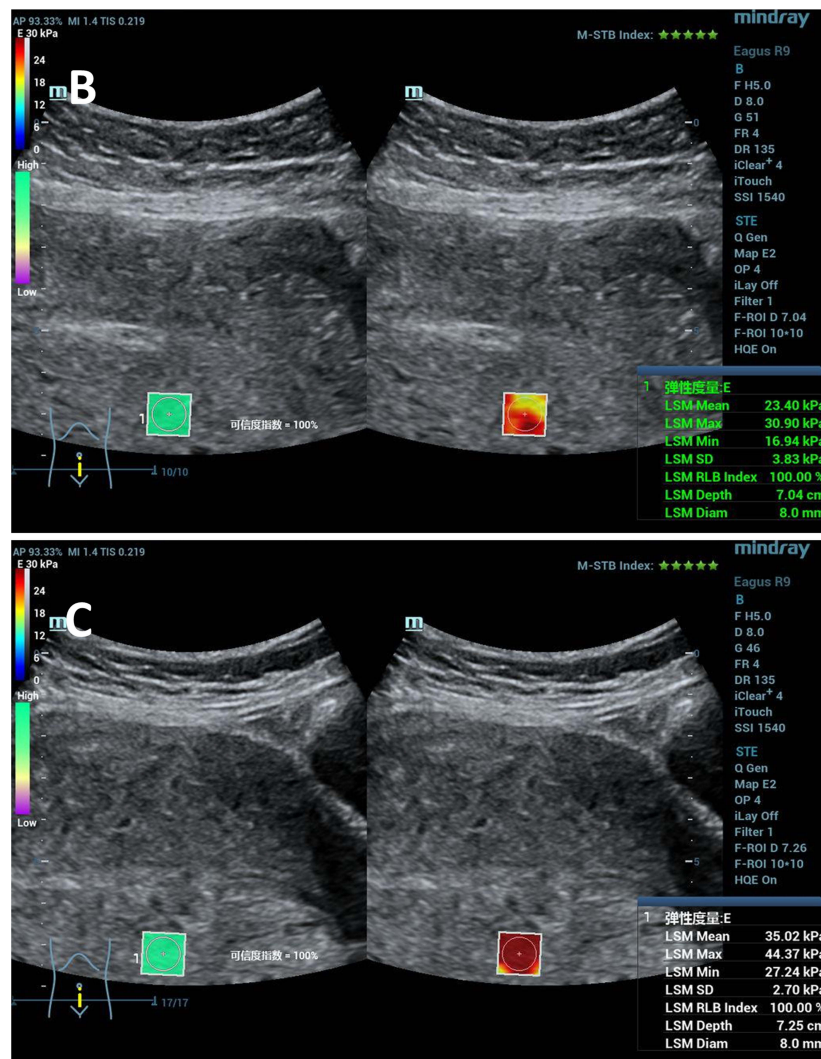


Figure 2 SWE images of postpartum posterior uterine walls.

Notes: (A) The SWV of 13.88kPa in the postpartum posterior uterine wall for normal pregnant woman with the placenta not located on the posterior wall during pregnancy. (B) The SWV of 23.40kPa in the postpartum posterior uterine wall for normal pregnant woman with the placenta located on the posterior wall during pregnancy. (C) The SWV of 35.02kPa in the postpartum posterior uterine wall for pregnant woman complicated by diabetes mellitus with the placenta located on the posterior wall during pregnancy.

The authors apologize for any inconvenience caused by these errors and for any confusion that may have arisen as a result. They would like to assure the readers that these corrections do not affect the results or conclusions of the paper.

Journal of Multidisciplinary Healthcare

Dovepress

Publish your work in this journal

The Journal of Multidisciplinary Healthcare is an international, peer-reviewed open-access journal that aims to represent and publish research in healthcare areas delivered by practitioners of different disciplines. This includes studies and reviews conducted by multidisciplinary teams as well as research which evaluates the results or conduct of such teams or healthcare processes in general. The journal covers a very wide range of areas and welcomes submissions from practitioners at all levels, from all over the world. The manuscript management system is completely online and includes a very quick and fair peer-review system. Visit <http://www.dovepress.com/testimonials.php> to read real quotes from published authors.

Submit your manuscript here: <https://www.dovepress.com/journal-of-multidisciplinary-healthcare-journal>