

Improvement of in vivo efficacy of recombinant human erythropoietin by encapsulation in PEG–PLA micelle

Yanan Shi^{1,2,*}

Wan Huang^{1,*}

Rongcai Liang^{1–3}

Kaoxiang Sun^{2,3}

Fangxi Zhang^{2,3}

Wanhui Liu^{2,3}

Youxin Li^{1–3}

¹College of Life Science, Jilin University, Changchun, China; ²State Key Laboratory of Long-acting and Targeting Drug Delivery System, Luye Pharmaceutical Co, Ltd, Yantai, China; ³School of Pharmacy, Yantai University, Yantai, China

*These authors contributed equally to this work

Abstract: To improve the pharmacokinetics and stability of recombinant human erythropoietin (rhEPO), rhEPO was successfully formulated into poly(ethylene glycol)–poly(D,L-lactide) (PEG–PLA) di-block copolymeric micelles at diameters ranging from 60 to 200 nm with narrow polydispersity indices (PDIs; PDI < 0.3) and trace amount of protein aggregation. The zeta potential of the spherical micelles was in the range of –3.78 to 4.65 mV and the highest encapsulation efficiency of rhEPO in the PEG–PLA micelles was about 80%. In vitro release profiles indicated that the stability of rhEPO in the micelles was improved significantly and only a trace amount of aggregate was found. Pharmacokinetic studies in rats showed highly enhanced plasma retention time of the rhEPO-loaded PEG–PLA micelles in comparison with the native rhEPO group. Increased hemoglobin concentrations were also found in the rat study. Native polyacrylamide gel electrophoresis results demonstrated that rhEPO was successfully encapsulated into the micelles, which was stable in phosphate buffered saline with different pHs and concentrations of NaCl. Therefore, PEG–PLA micelles can be a potential protein drug delivery system.

Keywords: rhEPO, PEG–PLA micelle, in vitro, pharmacokinetics, pharmacodynamics

Introduction

During the last decade, protein drug delivery has become a focus of research due to the large number of recombinant proteins being investigated for therapeutic applications. Most therapeutic proteins that are administered in the native form are susceptible to biodegradation or metabolism, have low membrane permeability, or can be rapidly eliminated from the blood circulation. Recombinant human erythropoietin (rhEPO), a glycoprotein with 165 amino acids and about 40% carbohydrates,^{1–3} has been widely used for the treatment of anemia. Clinically, rhEPO was given by long-term multiple weekly injections subcutaneously or intravenously (three injections per week for years). There are several known issues associated with rhEPO-based therapeutic applications that should be strongly considered: short protein half-life in vivo; side effects caused by multiple or high doses administered; and possible aggregation of the protein during manipulation, leading to adverse antibody response which may convert the anemia curer to anemia causer.⁴ Therefore, it is crucial to develop a novel formulation of rhEPO with sustained release, less aggregation, and improvements in patient compliance and therapeutic efficiency.

PEGylation can stabilize rhEPO, reduce renal excretion, and prolong blood circulation,⁵ but pharmacological activity is reduced.^{6,7} rhEPO has also been investigated in the formulations of microspheres, gelatin hydrogels, microneedles, and gastro-intestinal patches to resolve the problems,^{8–12} but with limited progress.

Correspondence: Youxin Li
Life Science Building, Jilin University,
2699 Qianjin Street, Changchun, China
Tel +86 431 8516 8648
Fax +86 431 8516 8637
Email liyouxin@jlu.edu.cn

Nanoscale vehicles have also been used as a versatile carrier for the delivery of therapeutic proteins.^{13,14} Polymeric micelles have recently received considerable attention as a promising nanoscale delivery system.^{15,16} Polymeric micelles consist of a hydrophobic inner core surrounded by a hydrophilic outer shell, which are easy to prepare and can incorporate various drugs into their inner cores with relatively high stability by chemical conjugation or physical entrapment.^{17–19} Polyethylene glycol (PEG), which is the most popular hydrophilic outer shell, has been used as a source of hydrophilicity due to its outstanding physicochemical and biological properties, including solubility in water and organic solvents, non-toxicity, and providing a stabilizing interface between the micelle core and the aqueous phase. In addition, PEG is able to avoid protein adsorption and subsequent non-specific uptake by the reticuloendothelial system following intravenous injection.^{20–22} As one of the most prominent biodegradable polymers, polylactic acid (PLA) is widely used in the fields of protein delivery and tissue engineering due to its non-toxic, biocompatible, and biodegradable characteristics.^{23–26} PEG–PLA micelles have been used as carriers of hydrophobic compounds to increase solubility and loading capability.¹⁷ However, only a few studies on proteins encapsulated in PEG–PLA micelles have been reported up to date.

In the present study, rhEPO was encapsulated into PEG–PLA micelles to extend its plasma half-life ($t_{1/2}$) and increase its area under curve (AUC) and efficacy. In vitro and in vivo studies were carried out and the results showed strong promise for use of micelles to encapsulate proteins.

Materials and methods

Materials

The rhEPO was purchased from Shenzhen Xinpeng Bioengineering Co, Ltd (Shenzhen, China). Methoxypolyethylene glycol ($M_n = 2000, 5000, 10,000$ g/mol) was purchased from Aladdin Chemistry Co, Ltd (Shanghai, China). D, L-lactide was obtained from Purac Biomaterials (Shanghai, China). A human erythropoietin enzyme-linked immunosorbent assay (ELISA) kit was purchased from R&D Systems (Minneapolis, MN, USA). All other chemicals used were of analytical grade.

The experiments were performed on female Sprague–Dawley (SD) rats weighing 250 ± 20 g. The animals were kept in plastic cages in a room maintained at $20^\circ\text{C} \pm 4^\circ\text{C}$, with a 12:12 light-dark cycle. Food and water were freely available. All experiments were performed in strict accordance with the Guide for the Care and Use of Laboratory Animals as adopted by the China National Institutes of Health.

Synthesis and characterization of PEG–PLAs

Synthesis of PEG–PLAs

Different amounts of D, L-lactide were mixed with pre-dried PEG ($M_n = 2000, 5000, 10,000$ g/mol) under nitrogen. Anhydrous toluene was added and followed by stannous octoate [0.1% (w/w), in toluene] as a catalyst. The mixture was heated to 120°C and refluxed for 24 hours. All reactions were carried out under an environment free of oxygen and moisture. The products were purified by repeated dissolution into dichloromethane and precipitated by cold ethyl ether. The isolated polymer was vacuum dried at 25°C .

Characterization of PEG–PLAs

The structure of the copolymer was analyzed by ^1H NMR (Bruker ARX-400; Bruker Spectrospin Inc, Zurich, Switzerland). The molecular weight and the polydispersity of PEG–PLA were determined by gel permeation chromatography. The thermo-properties of the copolymers were studied by differential scanning calorimetry (DSC821E; Mettler Toledo, Greifensee, Switzerland). The characteristics of the block copolymer PEG–PLAs were listed in Table 1.

Preparation and characterization of micelles

PEG–PLA micelles preparation

The solvent evaporation method was chosen to construct PEG–PLA micelles. First, the appropriate amount of PEG–PLA was dissolved in 1 mL of acetone. Then the PEG–PLA/acetone solution and rhEPO solution ($50,000$ IU/mL, 400 μL) were added dropwise into 10 mL phosphate buffered saline (PBS; 10 mM, different pHs) under stirring (Magnetism Msier 85-2B; Jingtian Medical Instrument Factory, Jiangsu, China), and the theoretical drug loading was 1%. After evaporation for 3 hours, the pH value of the product was adjusted to 7.4, before being passed through a 0.45 μm filter. Finally, the micelles were obtained and stored at 4°C for further use. Blank PEG–PLA micelles were prepared without rhEPO by the same method as described above. The preparation conditions for the micelles are shown in Table 2.

Critical micelle concentration (CMC)

The CMC was determined by the fluorescence spectroscopy method.²⁷ First, blank PEG–PLA micelles were prepared as described above. Ten milligrams of PEG–PLA dissolved in 1 mL of acetone was added dropwise to 10 mL

Table 1 Characteristics of PEG-PLA synthesized polymers

Batch	Copolymer weight ratio M_{nPEG}/M_{nPLA}^a	EG/LA ^b	GPC			DSC		CMC (mol/L)
			M_n (kDa)	M_w (kDa)	M_w/M_n	T_m (°C)	ΔH_m (J/g)	
1	5000:3900	2.1	14.16	15.48	1.07	53.81	-85.13	1.8×10^{-8}
2	5000:5800	1.4	15.89	17.00	1.09	51.96	-56.97	1.3×10^{-8}
3	5000:7600	1.1	17.55	23.06	1.36	53.03	-48.36	1.1×10^{-8}
4	2000:3800	0.9	6.16	8.19	1.32	54.13	-49.86	1.6×10^{-8}
5	10000:3600	4.5	19.24	21.01	1.09	63.16	-105.35	5.2×10^{-8}

Notes: ^aCopolymer weight ratio of PEG and PLA calculated from ¹H NMR; ^bmolar ratio of PEG to PLA in the copolymers, calculated from ¹H NMR spectra.

Abbreviations: PEG-PLA, poly(ethylene glycol)-poly(d,l-lactide); GPC, gel permeation chromatography; DSC, differential scanning calorimetry; EG/LA, Poly(ethylene glycol)/Poly(d,l-lactide); CMC, critical micelle concentration; ¹H NMR, proton nuclear magnetic resonance.

PBS (10 mM, pH 7.4) with stirring and evaporated for 3 hours. The product was serially diluted to concentrations of 0.5–0.00005 mg/mL. After addition of pyrene (1% in acetone solution), the solutions were stirred at room temperature for 24 hours in the dark. The fluorescence emission ratio of I_{373nm}/I_{392nm} of the solutions was recorded by a fluorescence spectrometer (RF-5301PC; Shimadzu Scientific Instruments, Kyoto, Japan) at 333 nm excitation wavelength. The CMC values were determined from the best-fit curves of the I_{373nm}/I_{392nm} ratio against the various concentrations.

Characterization of micelles

The morphology of the PEG-PLA micelles was observed using a transmission electron microscope (TEM) (JEOL

JEM-1400; JEOL Ltd, Tokyo, Japan). The particle size, PDI, and zeta potential of the micelles were determined under room temperature by a dynamic light scattering (DLS) instrument (Nicomp 380 ZLS; PSS, Santa Barbara, CA, USA) operating at 633 nm. The light scattering angle was set at 90 degrees, Sartorius Stedim Biotech, Goettingen, Germany.

Evaluation of rhEPO entrapment and aggregation

rhEPO-loaded PEG-PLA micelle solution (1 mL) was disintegrated completely by acetone and then extracted with PBS to obtain the total concentration of rhEPO. The micelle solution was ultrafiltrated using Vivaspin ultrafiltration spin columns (molecular weight cutoff = 100 kDa) (Sartorius Stedim Biotech, Goettingen, Germany) and centrifuged at a rotational speed of 3500 rpm for 30 minutes at 4°C (Sorvall Biofuge Primo R; Thermo Fisher Scientific, Waltham, MA, USA). The supernatant was washed with water to remove free rhEPO, then disintegrated and extracted by the same method as described above to determine the content of the encapsulated rhEPO. The aggregation of rhEPO was quantitated by size-exclusion high performance liquid chromatography (SEC-HPLC) using bovine serum albumin (BSA) as a standard (the retention time of BSA was 8.49 minutes, almost the same as the rhEPO aggregation product of 8.36 minutes). The concentrations of rhEPO and BSA were determined by an Agilent 1260 HPLC system equipped with a TSK-GEL G3000SWXL size-exclusion column and a TSK SWXL guard column (Tosoh Co, Tokyo, Japan). PBS (50 mM PBS, 300 mM NaCl, pH 7.4) was used in the mobile phase, running at the rate of 0.7 mL/minute. Excitation and emission wavelengths were 280 nm and 340 nm, respectively. The encapsulation efficiency (EE) was calculated according to the equation:

Table 2 Preparation conditions for rhEPO-loaded PEG-PLA micelles

Batch	PEG-PLA ^a	PEG-PLA concentration (mg/ml)	Rotation speed (rpm)	pH of PBS
1	PEG ₅₀₀₀ -PLA ₃₉₀₀	1	1300	7.4
2	PEG ₅₀₀₀ -PLA ₅₈₀₀	1	1800	7.4
3	PEG ₅₀₀₀ -PLA ₇₆₀₀	1	1800	7.4
4	PEG ₅₀₀₀ -PLA ₅₈₀₀	1	1000	7.4
5	PEG ₅₀₀₀ -PLA ₅₈₀₀	1	2300	7.4
6	PEG ₅₀₀₀ -PLA ₃₉₀₀	2	1800	7.4
7	PEG ₅₀₀₀ -PLA ₃₉₀₀	3	1800	7.4
8	PEG ₅₀₀₀ -PLA ₃₉₀₀	5	1800	7.4
9	PEG ₅₀₀₀ -PLA ₃₉₀₀	2	1800	2.5
10	PEG ₅₀₀₀ -PLA ₃₉₀₀	2	1800	3.6
11	PEG ₅₀₀₀ -PLA ₃₉₀₀	2	1800	3.8
12	PEG ₅₀₀₀ -PLA ₃₉₀₀	2	1800	4.0
13	PEG ₅₀₀₀ -PLA ₃₉₀₀	2	1800	4.5
14	PEG ₅₀₀₀ -PLA ₃₉₀₀	2	1800	7.4
15	PEG ₂₀₀₀ -PLA ₃₈₀₀	2	1800	3.8
16	PEG ₁₀₀₀₀ -PLA ₃₆₀₀	2	1800	3.8

Note: ^aPolymer terminology, whereas the numbers after PEG and PLA and M_n (determined by ¹H NMR spectroscopy) of PEG and PLA respectively.

Abbreviations: rhEPO, recombinant human erythropoietin; PEG-PLA, poly(ethylene glycol)-poly(d,l-lactide); PBS, phosphate buffered saline.

$$EE (\%) = \frac{\text{the rhEPO in supernatant/the total rhEPO before ultrafiltration}}{\text{before ultrafiltration}} \times 100\% \quad (1)$$

In vitro rhEPO release

After the free rhEPO was removed, the rhEPO-loaded micelles were evaluated in vitro and in vivo. rhEPO-loaded PEG–PLA micelles or an equivalent amount of native rhEPO solution in a dialysis bag (Spectra/Por CE Biotech Membrane; Spectrum Laboratories, Inc, Rancho Dominguez, CA, USA) (molecular weight cutoff = 300 kDa) was directly immersed into 100 mL of PBS (100 mM, pH 7.4). Dialyzate (5 mL) was withdrawn and replaced with an equivalent volume of fresh PBS at different time points of 0.25, 0.5, 1, 2, 4, 6, 8, 10, and 24 hours. The concentrations of free rhEPO released and residual aggregation of rhEPO recovered from the dialysis bag were assayed by SEC-HPLC in the same method as described above.

Pharmacokinetic study of rhEPO-loaded PEG–PLA micelles

SD rats (230–270 g, female), five of each group, were administered intravenously with 2000 IU/kg of rhEPO-loaded PEG–PLA micelles or an equivalent dose of native rhEPO. Blood samples (200 μ L) were drawn from the retro-orbital venous plexus of the rats at 0, 5, 15, 30, and 45 minutes, and 1, 4, 8, and 12 hours after intravenous (IV) dosing. The blood samples were centrifuged and the plasma was stored at -70°C until analysis. Plasma levels of rhEPO were quantitated using an ELISA kit, according to the manufacturer's instructions (MEP00, R&D Systems).

Pharmacodynamic study of rhEPO-loaded PEG–PLA micelles

SD rats (230–270 g, female), five of each group, were administered intravenously with 2000 IU/kg of rhEPO-loaded PEG–PLA micelles or an equivalent dose of native rhEPO and PBS as a control. Blood samples (200 μ L) were drawn from the retro-orbital venous plexus of the rats at 0, 1, 2, 3, and 4 days after IV dosing. The blood samples were mixed with a dilution buffer provided by the manufacturer immediately, and hemoglobin (HGB) levels were determined with an automated blood analyzer (Hemavet 950; Drew Scientific, Oxford, CT, USA).

The percentage increase of HGB concentration (compared with the control group) was used to characterize the pharmacodynamics of the rhEPO-loaded PEG–PLA micelles and the native rhEPO as reported previously.⁸

Native-PAGE

To demonstrate the encapsulation of rhEPO within the PEG–PLA micelle, native-PAGE was conducted by a mini-gel apparatus (gel size: $83 \times 75 \times 1$ mm; model DYCZ-24DN;

Beijing Liuyi Scientific Equipment Ltd, Beijing, China) using a 12% separating gel and a 5% stacking gel. The electrophoresis was run under non-reducing conditions. Blank PEG–PLA micelles, rhEPO, rhEPO-loaded PEG–PLA micelles, a mixture of blank micelles with rhEPO, and disintegrated rhEPO-loaded PEG–PLA micelles were analyzed. Protein samples were mixed with 5X non-reducing loading buffer [0.1 M Tris-HCl, pH 6.8; 20% (v/v) glycerol; 0.01% bromophenol blue]. Gels were stained in 0.1% (w/v) R250 Coomassie Brilliant Blue and destained with a solution of 10% (v/v) ethanol and 10% (v/v) acetic acid.

Physical stability of micelles

For physical stability of the micelles in PBS, 2 mL of PEG–PLA micelle solution was mixed with PBS (10 mM) under different conditions (different pHs of 2.0, 4.5, 7.4, and 10.4; different NaCl concentrations of 0, 80, 150, 300, and 600 mM).

The micelle solution was stored at 2°C – 8°C for 2 months to test the storage stability.

Statistical analysis

All data were reported as mean \pm standard deviation. Statistical analysis between groups was determined by one-way analysis of variance followed by Dunnett's test. A value of $P < 0.05$ was considered statistically significant.

Results

Characterization of PEG–PLAs

A series of PEG–PLA copolymers was synthesized successfully in our lab. The characteristics of the copolymers are listed in Table 1. M_n of the PEG–PLA block copolymers was in the range of 6000–19,000. Melting enthalpies decreased as the content of lactide increased, due to the reduction in crystallization of PEG in the copolymer. CMC values of the copolymers (Table 1) were well associated with hydrophobic block lengths,²⁷ which decreased with the increase of lactide content in the copolymers. This was consistent with the data reported previously.^{28–31} All the CMC values were low enough (0.52 – 1.8×10^{-8} mol/L) to maintain thermodynamic stability of micelles after intravenous injection which induced severe dilution.^{32,33}

Physicochemical characterization of micelles

Morphology of micelles

The morphology of PEG–PLA micelles were visualized by TEM. As shown in Figure 1A, the bright entities were

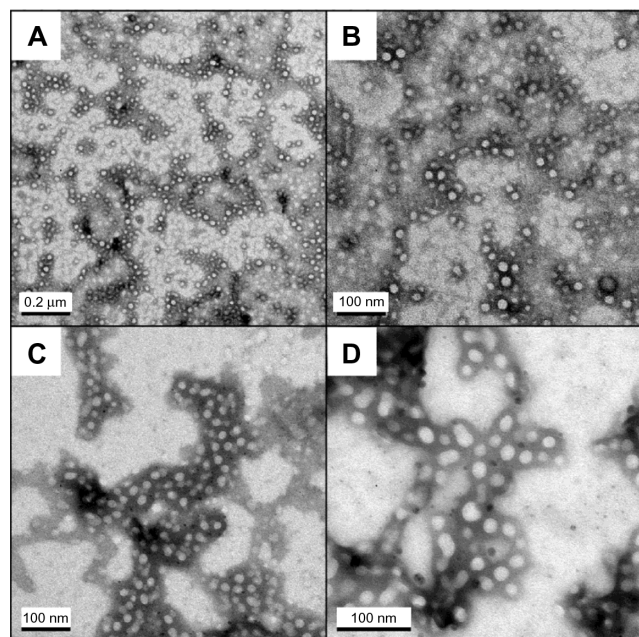


Figure 1 TEM images of PEG-PLA micelles. (A) PEG₅₀₀₀-PLA₃₉₀₀ blank micelle. (B) rhEPO-loaded PEG₂₀₀₀-PLA₃₈₀₀ micelle. (C) rhEPO-loaded PEG₅₀₀₀-PLA₃₉₀₀ micelle. (D) rhEPO-loaded PEG_{10,000}-PLA₃₆₀₀ micelle.

Abbreviations: TEM, transmission electron microscopy; PEG-PLA, poly(ethylene glycol)-poly(d,l-lactide).

surrounded by dark staining, which clearly indicated the presence of spherical particulates. The micelles were discrete; fairly uniform in size. Additionally, the PEG_{10,000}-PLA₃₆₀₀ micelles showed a larger size (Figure 1D) than the other two micelles (Figure 1B and C).

The particle size and zeta potential of micelles

Particle size and zeta potential were main factors for in vivo circulation of nanoparticles.³⁴ The PEG-PLA micelles were characterized by DLS in terms of mean size, PDI, and zeta potential (Table 3). The zeta potential of micelles was found to be neutral in the range of -3.78 mV to 4.65 mV. Micelles had a size in the range of 60–200 nm with a PDI between 0.15 and 0.31 suggesting good polydispersity. The increase in either block length of PLA or that of PEG when the other block was kept unchanged increased the size of the micelle. The size of PEG₅₀₀₀-PLA₃₉₀₀ micelles (73.4 nm) was smaller than that of PEG₅₀₀₀-PLA₇₆₀₀ and PEG₁₀₀₀₀-PLA₃₆₀₀ micelles. The effect on the size and PDI of PEG-PLA micelles with respect to stirring speed, polymer concentration, and pH value of PBS were also studied. At a lower stirring speed of 1000 rpm, the size of the micelle was 196.4 nm, and it was reduced to 137.5 nm at a stirring speed of 1800 rpm, but the size increased to 187.6 nm when the stirring speed was accelerated to 2300 rpm. The size also

Table 3 Characteristics of rhEPO-loaded PEG-PLA micelles

Batch	Particle size (nm)	PDI	Zeta potential (mV)	EE (%)	Aggregation (%)
1	73.4 ± 3.6	0.23	-3.78 ± 2.12	8.2 ± 2.1	5.16 ± 1.03
2	137.5 ± 5.3	0.22	4.65 ± 1.65	7.4 ± 3.4	3.35 ± 1.52
3	177.8 ± 6.2	0.31	4.55 ± 1.38	3.1 ± 1.2	23.02 ± 4.37
4	196.4 ± 4.9	0.22	1.14 ± 1.65	10.4 ± 3.1	4.70 ± 1.46
5	187.6 ± 3.2	0.25	-3.06 ± 2.39	3.3 ± 1.2	3.68 ± 1.21
6	80.4 ± 1.6	0.22	0.68 ± 1.26	14.7 ± 3.2	Trace*
7	83.4 ± 3.1	0.27	0.92 ± 1.53	5.2 ± 1.6	3.38 ± 0.95
8	77.4 ± 1.6	0.43	0.43 ± 4.29	N	N
9	67.2 ± 2.6	0.19	-0.46 ± 1.14	47.2 ± 3.5	Trace*
10	70.1 ± 1.7	0.21	-0.75 ± 0.96	57.5 ± 4.3	Trace*
11	71.5 ± 2.3	0.15	0.21 ± 1.32	71.5 ± 1.6	Trace*
12	72.3 ± 1.5	0.19	-0.54 ± 0.95	58.3 ± 1.8	Trace*
13	69.8 ± 1.8	0.25	1.86 ± 0.91	60.4 ± 4.6	Trace*
14	80.2 ± 2.1	0.23	-1.35 ± 1.46	20.6 ± 3.4	Trace*
15	73.4 ± 2.8	0.24	1.28 ± 0.98	54.9 ± 3.2	Trace*
16	131.2 ± 4.3	0.28	-0.76 ± 1.23	79.2 ± 4.9	Trace*

Notes: *Trace meant below the limit of detection. N demonstrated didn't detect. **Abbreviations:** rhEPO, recombinant human erythropoietin; PEG-PLA, poly(ethylene glycol)-poly(d,l-lactide); PDI, polydispersity index; EE, encapsulation efficiency.

increased slightly with increased PEG-PLA concentration. There was no significant difference in size of the micelles prepared at different pHs.

EE of micelles and aggregation of rhEPO

The EE and percentage of the protein aggregation of rhEPO-loaded PEG-PLA micelles were investigated (Table 3). Figure 2 shows that pH played a pivotal role in the EE. At pH 7.4, the EE of the optimized PEG-PLA micelle was 21% with trace aggregation of rhEPO (Batch 14). A significant

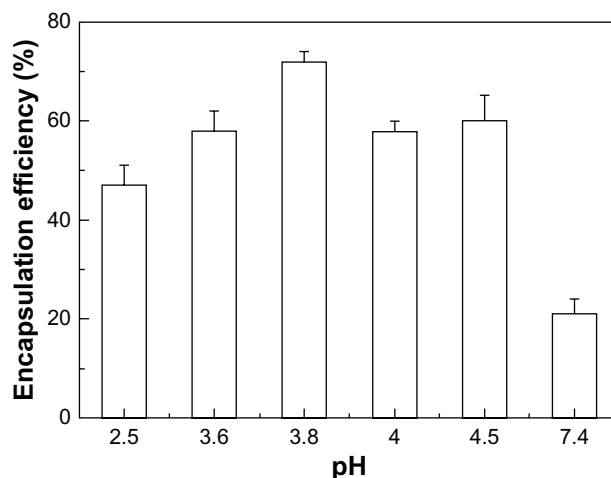


Figure 2 The encapsulation efficiency of the PEG-PLA micelles prepared at different pHs.

Abbreviation: PEG-PLA, poly(ethylene glycol)-poly(d,l-lactide).

improvement of EE was found when the pH was in the range of 3.5–4.5 and the highest EE of 79.2% was obtained at pH 3.8 with only a trace amount of aggregate. The EE increased with lengthening of the PEG block; eg, the EE of PEG_{10,000}-PLA₃₆₀₀ micelle was about 20% higher than that of PEG₂₀₀₀-PLA₃₈₀₀ micelle (Table 3).

In vitro release

Figure 3 shows the in vitro cumulative release of rhEPO from the micelles with different PEG-PLAs compared to that of the native rhEPO solution. The cumulative release of rhEPO from all micelles reached almost 80%, while native rhEPO was only 50%. The PEG₅₀₀₀-PLA_{5800,7600} micelles weren't evaluated in vitro in our study due to their larger size (137.5, 177.8 nm). It was previously reported that nanoparticles with larger size (>100 nm) were cleared quickly in blood.³⁵ The micelles of batch 11, 15, and 16 (Table 3) were carried out in vitro to investigate the effect of block length of PEG. The results demonstrated that PEG₅₀₀₀-PLA₃₉₀₀ micelles released slower than the other two micelles. After the release of rhEPO in vitro, the amount of aggregated rhEPO in the dialysis bag was assayed in both the PEG₅₀₀₀-PLA₃₉₀₀ micelle group and the native rhEPO group. About 30% less aggregation was found in the PEG₅₀₀₀-PLA₃₉₀₀ micelle group indicating that the stability of rhEPO was improved significantly in the micelle (Figure 4).

Pharmacokinetic study

Circulating levels of rhEPO were measured by ELISA following IV injection in rats. The mean plasma concentration-time curves are shown in Figure 5. The pharmacokinetic parameters were calculated by the pharmacokinetic software

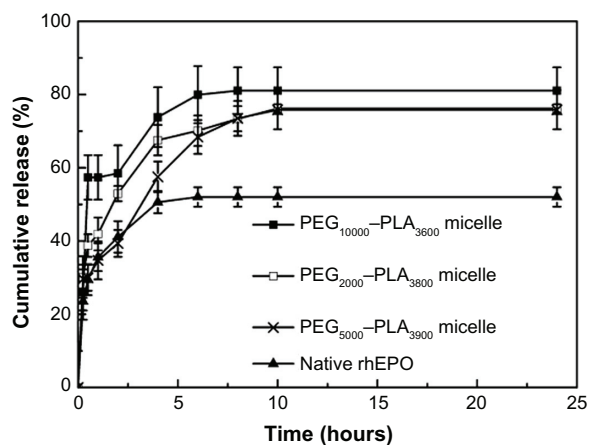


Figure 3 In vitro release behaviors of rhEPO-loaded PEG-PLA micelles (Table 2, batch 11, 15, and 16) in PBS (n = 3).

Abbreviations: PEG-PLA, poly(ethylene glycol)-poly(d,l-lactide); rhEPO, recombinant human erythropoietin; PBS, phosphate buffered saline.

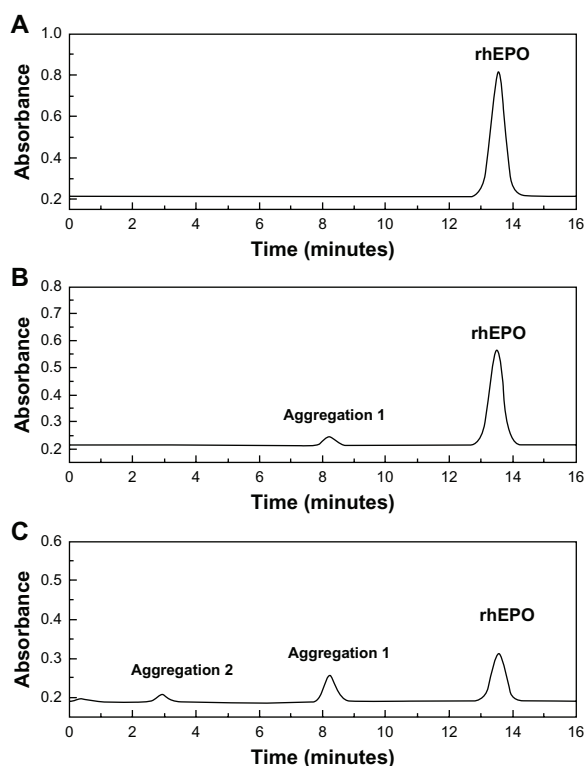


Figure 4 SEC-HPLC chromatograms of rhEPO. (A) Native rhEPO solution; (B) RhEPO recovered from the dialysis bag after in vitro release of rhEPO-loaded PEG₅₀₀₀-PLA₃₉₀₀ micelle; (C) RhEPO recovered from the dialysis bag after in vitro release of native rhEPO solution.

Abbreviations: SEC-HPLC, size-exclusion high performance liquid chromatography; rhEPO, recombinant human erythropoietin; PEG-PLA, poly(ethylene glycol)-poly(d,l-lactide).

DAS 2.1.1 (Drug And Statistics; a computer program produced by the Clinical Trial Center of Shanghai University of Traditional Chinese Medicine, Shanghai, China) and summarized in Table 4. C_{max} of the PEG₂₀₀₀-PLA₃₈₀₀ and PEG₅₀₀₀-PLA₃₉₀₀ micelle groups were 32.83 and 39.88 ng/mL, respectively, much higher than that of the native rhEPO group (12.07 ng/mL) ($P < 0.05$). Plasma half-lives of the two micelle groups were also prolonged compared to that of the native rhEPO group (4.36 or 4.12 hours vs 2.02 hours, $P < 0.05$). Though a longer PEG block reduced the improvement of C_{max} , the C_{max} (16.65 ng/mL) of the PEG_{10,000}-PLA₃₆₀₀ micelles was still significantly higher than that of the native rhEPO group. The PEG_{10,000}-PLA₃₆₀₀ micelles didn't prolong $t_{1/2}$ significantly (3.62 hours vs 2.02 hours, $P > 0.05$). The AUC of all the micelles increased compared to that of the native rhEPO group. Moreover, a 2-fold increase in AUC was found in the PEG₅₀₀₀-PLA₃₉₀₀ micelle group.

Pharmacodynamic study

HGB concentration changes of the rats after the injections of the micelles, native rhEPO (2000 IU/kg), and PBS were

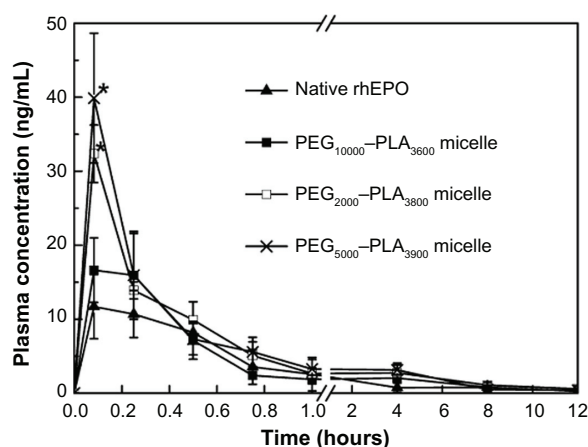


Figure 5 Plasma concentration versus time curve for rhEPO after IV administration of rhEPO-loaded PEG-PLA micelles (Table 2, batch 11, 15, and 16) (2000 IU/kg).

Notes: Each point represents mean \pm SD (n = 5); * $P < 0.05$ (micelle group vs native rhEPO group).

Abbreviations: rhEPO, recombinant human erythropoietin; IV, intravenous; PEG-PLA, poly(ethylene glycol)-poly(D,L-lactide); SD, standard deviation.

determined by automated blood analyzer (Figure 6). On the second day after IV administration, the HGB level started to increase. In the case of the PEG₅₀₀₀-PLA₃₉₀₀ and PEG₁₀₀₀₀-PLA₃₆₀₀ micelles, the percentage increase of HGB concentration was enhanced to 43.45% and 48.72%, respectively, much higher ($P < 0.05$) than that of the native rhEPO group (25.59%). The percentage increase of HGB concentration of 38.43% in the case of the PEG₂₀₀₀-PLA₃₈₀₀ micelles indicated that a short PEG block might reduce the improvement lightly. On the third day, the percentage increase of HGB concentration of the PEG₂₀₀₀-PLA₃₈₀₀ and PEG₅₀₀₀-PLA₃₉₀₀ micelles were at 48.21% and 48.71%, significantly higher than that of the native rhEPO group (22.49%, $P < 0.05$). In the case of the PEG₁₀₀₀₀-PLA₃₆₀₀ micelles, the percentage increase of HGB concentration (34.04%) on the third day was reduced from 48.72% achieved on the second day, still higher than the 22.48% increase of the native rhEPO group.

Table 4 Pharmacokinetic parameters of rhEPO in the Sprague-Dawley rats

Parameters	AUC $\mu\text{g/L} \cdot \text{h}$	T _{1/2} h	C _{max} ng/mL	Ratio*
Native rhEPO	15.96 \pm 8.02	2.02 \pm 0.59	12.07 \pm 4.33	1.00
PEG ₁₀₀₀₀ - PLA ₃₆₀₀ micelle	23.01 \pm 2.56	3.62 \pm 0.09	16.65 \pm 4.35	1.44
PEG ₅₀₀₀ - PLA ₃₉₀₀ micelle	32.83 \pm 3.87	4.36 \pm 0.36	39.88 \pm 8.76	2.00
PEG ₂₀₀₀ - PLA ₃₈₀₀ micelle	31.75 \pm 6.53	4.12 \pm 0.41	32.36 \pm 3.89	1.99

Note: *Ratio = (AUC of rhEPO-loaded PEG-PLA micelles)/(AUC of native rhEPO).

Abbreviations: rhEPO, recombinant human erythropoietin; AUC, area under curve; T_{1/2}, plasma half-life; PEG-PLA, poly(ethylene glycol)-poly(D,L-lactide).

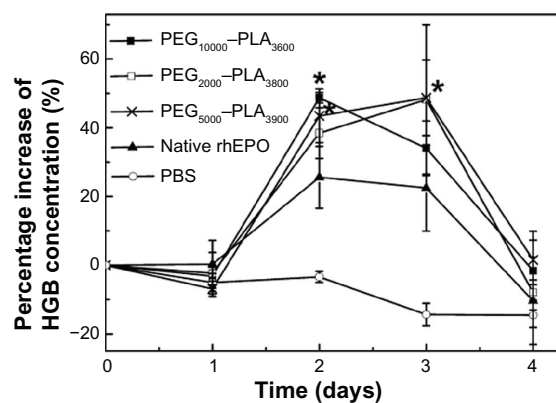


Figure 6 Percentage increase of hemoglobin concentration of the rats after IV administration of rhEPO-loaded PEG-PLA micelles (Table 2, batch 11, 15, and 16), native rhEPO and PBS (2000 IU/kg).

Notes: Each point represents mean \pm SD (n = 5); * $P < 0.05$ (micelle group vs native rhEPO group).

Abbreviations: IV, intravenous; rhEPO, recombinant human erythropoietin; PEG-PLA, poly(ethylene glycol)-poly(D,L-lactide); PBS, phosphate buffered saline; SD, standard deviation.

The significantly higher HGB concentrations of all the micelles were maintained until the fourth day.

Native-PAGE

No protein bands in the lanes of blank PEG-PLA micelles and rhEPO-loaded PEG-PLA micelles were observed (Figure 7), which could be found in the lanes of native rhEPO, the mixture of blank micelles with rhEPO, and the disintegrated rhEPO-loaded PEG-PLA micelle.

Physical stability of micelles

Particle size and PDI were the main characteristics we used to measure the physical stability of the micelles. A 2-month

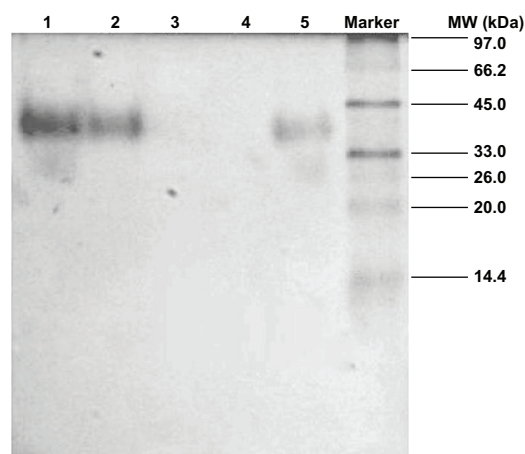


Figure 7 Native-PAGE analysis.

Notes: Lanes: 1, native rhEPO solution; 2, the mixture of blank PEG-PLA micelle with rhEPO; 3, blank PEG-PLA micelle; 4, rhEPO-loaded PEG-PLA micelle; 5, rhEPO-loaded PEG-PLA micelle destroyed by acetone.

Abbreviations: rhEPO, recombinant human erythropoietin; PEG-PLA, poly(ethylene glycol)-poly(D,L-lactide).

stability test of the PEG–PLA micelles at 2°C–8°C was carried out (Table 5). The particle size of the micelles kept almost the same and PDI was lower than 0.3 until 1 month, which showed that the micelle was stable within 1 month.

The micelle was stable in a wide range of pH (2.0–10.4, data not shown). The size of the micelles was not changed with NaCl concentration up to 300 mM (Figure 8), but when the concentration of NaCl was increased to 600 mM, the particle size started to increase, indicating aggregation of micelles.

Discussion

This study was designed to investigate the effect of encapsulation of rhEPO in polymeric micelles on in vitro release, pharmacokinetics, and efficacy. rhEPO was successfully formulated into polymer micelles of PEG–PLA diblock copolymers with a relatively high EE. Results showed the polymeric micelles increased AUC, prolonged $t_{1/2}$, and enhanced drug efficacy.

The DLS method was used to analyze the particle size and zeta potential of the micelles. The results demonstrated that the PEG–PLA micelles showed a growing size with the increase of lactide content in the polymer due to interfacial tension between the polymer solution and the aqueous phase.³⁶ The mean size of the PEG_{10,000}–PLA₃₆₀₀ micelles (131.2 nm) was larger than that of the PEG₅₀₀₀–PLA₃₉₀₀ micelles, due to a larger corona thickness of the micelle with the increase of PEG block length in the PEG–PLA. For example, the corona thickness of PEG ($M_w = 12,000$) in the micelles was 16.7–26.2 nm.³⁷ The particle size of the PEG–PLA micelles was also influenced by stirring speed. The balance between the mutual attraction of hydrophobic segments and repulsion of hydrophilic segments to formulate micelles was influenced by the existence of stirring to a certain extent, leading to an increase of the energy in the system. In order to decrease the interfacial energy, the particle size of the micelles was increased.³⁸ Thus, at a higher stirring speed of 2300 rpm, the mean particle size of the micelles was 50 nm larger than that prepared at 1800 rpm. Due to influences of the dehydration and collapse of the hydrophilic PEG corona of the micelles, TEM (Figure 1) showed much smaller particle size than that determined by DLS.³⁹

Table 5 The stability of the micelle (Table 2, batch 11) at 2°C–8°C

Time (day)	0	1	3	7	15	30	60
Particle size (nm)	71.5	67.1	66.3	66.2	65.1	62.9	62.5
PDI	0.26	0.26	0.26	0.30	0.29	0.28	0.42

Abbreviation: PDI, polydispersity index.

Nanoparticles with a positive charge are easy to absorb with albumin in blood; while those with a negative charge tend to adhere to the surface of platelets.⁴⁰ Due to a neutral PEG corona of the micelles in PBS at pH 7.4, the zeta potential of the micelles was close to zero, which could reduce the absorbance of the micelle with components in blood, increase the stability, and provide a longer circulation in vivo.

To remove free non-encapsulated rhEPO, a filtration/centrifugation separation technique was applied. The particle size and PDI of the micelles were not modified by the filtration/centrifugation process, but about 50% of the free rhEPO remained adsorbed in the filter. Therefore, the ratio of rhEPO encapsulated in PEG–PLA micelles to the total rhEPO was calculated as EE. The highest EE of 79% was obtained at pH 3.8, in which rhEPO had the lowest solubility (the isoelectric point of rhEPO is pH 3.7–4.1). The hydrophilicity reduction of rhEPO at this pH led to more rhEPO molecules encapsulated into PEG–PLA micelles. The result of native-PAGE (Figure 7) also verified that almost all of the rhEPO molecules encapsulated into the micelles remained in their original native form.

Based on the rhEPO release curves in vitro (Figure 3), we speculated that the release of rhEPO within 0.5 hours was due to the effusion of rhEPO from the surface of the micelles. After 1 hour, a consistent and stable tendency was observed in the release curves because a constant quantity of rhEPO was exposed at the surface of the micelles owing to the constant effusion speed of the rhEPO (Figure 3). Due to an improved stability, the rhEPO released from PEG–PLA micelles in vitro was significantly more than that released from the native rhEPO group (Figure 3), which was consistent with a 30% less residual aggregation of rhEPO in the dialysis bag of the micelle group (Figure 4). PEG conjugated to PLA helped prevent protein aggregation and protein interfacial interactions with the solid surface of the container.^{41,42} PEG_{10,000}–PLA₃₆₀₀ micelles released faster than PEG₅₀₀₀–PLA₃₉₀₀ micelles, which might be explained due to the higher hydrophilicity of the micelles containing the longer PEG chain.

The results of rat study showed improved $t_{1/2}$ and AUC of the micelles compared to that of native rhEPO group (Figure 5 and Table 4). Although the main site and mechanism of the clearance of rhEPO from circulation is not fully known yet, the kidneys have been shown to play a role in its metabolic removal.^{43–45} Polymer nanoparticles larger than 10 nm in diameter could avoid first-pass renal filtration.⁴⁶ Improved pharmacokinetic performances of rhEPO in the PEG–PLA micelles with a size of 60–150 nm were attributed to reduced renal filtration as well as the reduction of the aggregation of rhEPO in the micelles. PEG prevented the uptake and rapid

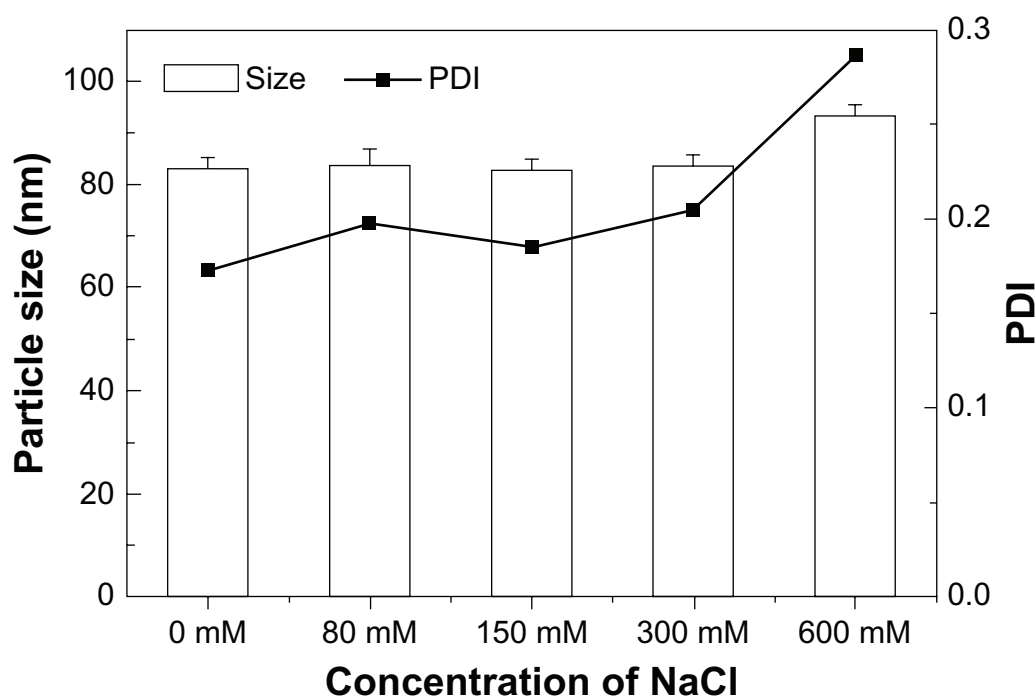


Figure 8 The mean particle size and PDI of the PEG-PLA micelle in PBS with different concentrations of NaCl.

Abbreviations: PDI, polydispersity index; PEG-PLA, poly(ethylene glycol)-poly(D,L-lactide); PBS, phosphate buffered saline.

clearance of the micelles in vivo by the reticuloendothelial system and also prevented the interaction of the payload with proteolytic enzymes, and thus increased the AUC and prolonged the $t_{1/2}$.⁴⁷ The $t_{1/2}$ of the PEG_{10,000}-PLA₃₆₀₀ micelles was shorter than the other two PEG-PLA micelles in vivo (3.62 hours vs 4.36 hours or 4.12 hours, Table 4), which was due to its larger particle size (131.2 nm vs 71.5 nm or 73.4 nm), a main factor for the clearance in vivo. As previously reported, the blood clearance of 80 nm nanoparticles was half as fast as the clearance of 170 nm and 240 nm particles.³⁵

The pharmacological activity of rhEPO relies on its specific binding on cell surface receptors. Activation of the rhEPO receptor can trigger intracellular signaling events which leads to proliferation and differentiation of the cells.⁴⁸ Therefore, HGB concentration of all the rats after administration of the micelles and native rhEPO started to increase on the second day. The percentage increase of HGB concentration of all the micelles was much higher on the second and the third day as compared to that of the native rhEPO group (Figure 6). Since the PEG_{10,000}-PLA₃₆₀₀ micelles cleared faster than the other two micelles (Table 4) in vivo, on the third day, the percentage increase of HGB concentration was relatively lower for the PEG_{10,000}-PLA₃₆₀₀ micelles as compared to the PEG₂₀₀₀-PLA₃₈₀₀ or PEG₅₀₀₀-PLA₃₉₀₀ micelles (34.04% vs 48.21% or 48.71%). However, there was no significant difference in efficacy among the PEG-PLA micelles.

In summary, the studies indicated that the rhEPO was successfully encapsulated in the micelles, and the protein was maintained in its native conformation and had improved stability both in vitro and in vivo. The micelles could improve the pharmacokinetics of rhEPO significantly, and a double AUC and prolonged $t_{1/2}$ might benefit the patient.

Conclusion

A novel formulation of rhEPO in PEG-PLA micelles, which is spherical, highly monodispersed, and stable physically in PBS for at least 1 month, has been developed and characterized. The rhEPO has been shown to be encapsulated into PEG-PLA micelles with high efficiency, which reduces its propensity to aggregate and provides conformational stability to the rhEPO molecules, and thus increases AUC, prolongs $t_{1/2}$, and enhances drug efficacy. Improved stability of rhEPO in the micelles may decrease the need to administer large doses of the protein through continuous IV or subcutaneous injection administration for achieving therapeutic efficacy. Meanwhile, our research presents great promise for the use of micelles to encapsulate proteins.

Acknowledgments

This work was supported by the National Basic Research Program of China. (No 2010CB735602, No 2012CB724003).

Disclosure

The authors report no conflicts of interest in this work.

References

- Krantz SB. Erythropoietin. *Blood*. 1991;77(3):419–434.
- Fukuda MN, Sasaki H, Lopez L, Fukuda M. Survival of recombinant erythropoietin in the circulation: the role of carbohydrates. *Blood*. 1989;73(1):84–89.
- Dordal MS, Wang FF, Goldwasser E. The role of carbohydrate in erythropoietin action. *Endocrinology*. 1985;116(6):2293–2299.
- Schellekens H. Immunologic mechanisms of EPO-associated pure red cell aplasia. *Best Pract Res Clin Haematol*. 2005;18(3):473–480.
- Macdougall IC, Eckardt KU. Novel strategies for stimulating erythropoiesis and potential new treatments for anaemia. *Lancet*. 2006;368(9539):947–953.
- Francis GE, Fisher D, Delgado C, Malik F, Gardiner A, Neale D. PEGylation of cytokines and other therapeutic proteins and peptides: the importance of biological optimisation of coupling techniques. *Int J Hematol*. 1998;68(1):1–18.
- Veronese FM, Mero A. The impact of PEGylation on biological therapies. *Biodrugs*. 2008;22(5):315–329.
- He J, Feng M, Zhou X, et al. Stabilization and encapsulation of recombinant human erythropoietin into PLGA microspheres using human serum albumin as a stabilizer. *Int J Pharm*. 2011;416(1):69–76.
- Geng Y, Yuan W, Wu F, Chen J, He M, Jin T. Formulating erythropoietin-loaded sustained-release PLGA microspheres without protein aggregation. *J Control Release*. 2008;130(3):259–265.
- Venkatesan N, Uchino K, Amagase K, Ito Y, Shibata N, Takada K. Gastro-intestinal patch system for the delivery of erythropoietin. *J Control Release*. 2006;111(1–2):19–26.
- Pistel K, Bittner B, Koll H, Winter G, Kissel T. Biodegradable recombinant human erythropoietin loaded microspheres prepared from linear and star-branched block copolymers: influence of encapsulation technique and polymer composition on particle characteristics. *J Control Release*. 1999;59(3):309–325.
- Hahn SK, Oh EJ, Miyamoto H, Shimobouji T. Sustained release formulation of erythropoietin using hyaluronic acid hydrogels crosslinked by Michael addition. *Int J Pharm*. 2006;322(1–2):44–51.
- Almeida AJ, Souto E. Solid lipid nanoparticles as a drug delivery system for peptides and proteins. *Adv Drug Deliv Rev*. 2007;59(6):478–490.
- Martins BS, Sarmento B, Ferreira DC, Souto EB. Lipid-based colloidal carriers for peptide and protein delivery – liposomes versus lipid nanoparticles. *Int J Nanomedicine*. 2007;2(4):595–607.
- Osada K, Christie RJ, Kataoka K. Polymeric micelles from poly(ethylene glycol)-poly(amino acid) block copolymer for drug and gene delivery. *J R Soc Interface*. 2009;6 Suppl 3:S325–S339.
- Lee Y, Ishii T, Cabral H, et al. Charge-conversional polyionic complex micelles-efficient nanocarriers for protein delivery into cytoplasm. *Angew Chem Int Ed Engl*. 2009;48(29):5309–5312.
- Nishiyama N, Kataoka K. Nanostructured devices based on block copolymer assemblies for drug delivery: Designing structures for enhanced drug function. *Polymer Therapeutics II*. 2006;193:67–101.
- Lavasanifar A, Samuel J, Kwon GS. Poly(ethylene oxide)-block-poly(L-amino acid) micelles for drug delivery. *Adv Drug Deliv Rev*. 2002;54(2):169–190.
- Kataoka K, Harada A, Nagasaki Y. Block copolymer micelles for drug delivery: design, characterization and biological significance. *Adv Drug Deliv Rev*. 2001;47(1):113–131.
- Layre A, Couvreur P, Chacun H, et al. Novel composite core-shell nanoparticles as busulfan carriers. *J Control Release*. 2006;111(3):271–280.
- Discher DE, Ahmed F. Polymersomes. *Annu Rev Biomed Eng*. 2006;(8):323–341.
- Chen GX, Kim HK, Kim ES, Yoon JS. Synthesis of high-molecular-weight poly(L-lactic acid) through the direct condensation polymerization of L-lactic acid in bulk state. *Eur Polym J*. 2006;42(2):468–472.
- Nagarwal RC, Kant S, Singh PN, Maiti P, Pandit JK. Polymeric nanoparticulate system: a potential approach for ocular drug delivery. *J Control Release*. 2009;136(1):2–13.
- Jain AK, Goyal AK, Gupta PN, et al. Synthesis, characterization and evaluation of novel triblock copolymer based nanoparticles for vaccine delivery against hepatitis B. *J Control Release*. 2009;136(2):161–169.
- Garlotta DA. A literature review of poly(lactic acid). *J Polym Environ*. 2001;9(2):63–84.
- Chen C, Yu CH, Cheng YC, Yu PH, Cheung MK. Biodegradable nanoparticles of amphiphilic triblock copolymers based on poly(3-hydroxybutyrate) and poly(ethylene glycol) as drug carriers. *Biomaterials*. 2006;27(27):4804–4814.
- Li S, Vert M. Synthesis, characterization and stereocomplex-Induced gelation of block copolymers prepared by ring-opening polymerization of (D)-Lactide in the presence of poly(ethylene glycol). *Macromolecules*. 2003;36(21):8008–8014.
- Kataoka K, Harada A, Nagasaki Y. Block copolymer micelles for drug delivery: design, characterization and biological significance. *Adv Drug Deliv Rev*. 2001;47(1):113–131.
- Yasugi K, Nagasaki Y, Kato M, Kataoka K. Preparation and characterization of polymer micelles from poly(ethylene glycol)-poly(D, L-lactide) block copolymers as potential drug carrier. *J Control Release*. 1999;62(1–2):89–100.
- Porjazoska A, Dimitrov P, Dimitrov I, Cvetkovska M, Tsvetanov CB. Synthesis and aqueous solution properties of functionalized and thermo-responsive poly(D, L-lactide)/polyether block copolymers. *Macromol Symp*. 2004;210(1):427–436.
- Yang L, Zhao Z, Wei J, El Ghzaoui A, Li S. Micelles formed by self-assembly of polylactide/poly(ethylene glycol) block copolymers in aqueous solutions. *J Colloid Interface Sci*. 2007;314(2):470–477.
- Pierri E, Avgoustakis K. Poly(lactide)-poly(ethylene glycol) micelles as a carrier for griseofulvin. *J Biomed Mater Res A*. 2005;75(3):639–647.
- Kim SY, Shin IG, Lee YM. Preparation and characterization of biodegradable nanospheres composed of methoxy poly(ethylene glycol) and dl-lactide block copolymer as novel drug carriers. *J Control Release*. 1998;56(1–3):197–208.
- Domínguez A, Fernández A, González N, Iglesias E, Montenegro L. Determination of critical micelle concentration of some surfactants by three techniques. *J Chem Educ*. 1997;74(10):1227–1231.
- Fang C, Shi B, Pei YY, Hong MH, Wu J, Chen HZ. In vivo tumor targeting of tumor necrosis factor- α -loaded stealth nanoparticles: effect of MePEG molecular weight and particle size. *Eur J Pharm Sci*. 2006;27(1):27–36.
- Caliceti P, Salmasso S, Elvassore N, Bertucco A. Effective protein release from PEG/PLA nano-particles produced by compressed gas anti-solvent precipitation techniques. *J Control Release*. 2004;94(1):195–205.
- Harada A, Kataoka K. Novel polyion complex micelles entrapping enzyme molecules in the core: Preparation of narrowly-distributed micelles from lysozyme and poly(ethylene glycol)-poly(aspartic acid) block copolymer in aqueous medium. *Macromolecules*. 1998;31(2):288–294.
- Gao J, Ming J, Gu Z, Zhang X. Investigations on preparation and release behavior in vitro of 9-nitro camptothecin encapsulated micelles. *Sheng Wu Yi Xue Gong Cheng Xue Za Zhi*. 2008;25(6):1338–1343.
- Yang KW, Li XR, Yang ZL, Li PZ, Wang F, Liu Y. Novel polyion complex micelles for liver-targeted delivery of diammonium glycyrhizinate: in vitro and in vivo characterization. *J Biomed Mater Res A*. 2009;88(1):140–148.
- Wei S. *Biopharmaceutics and Pharmacokinetics*. 2nd ed. Beijing: People's Medical Publishing House; 2003:113.
- Harris JM. Introduction to biotechnical and biomedical applications of poly(ethylene glycol). In: Harris JM, editor. *Poly(ethylene glycol) Chemistry: Biochemical and Biomedical Applications*. New York: Plenum Press; 1992.

42. Hinds K, Koh JJ, Joss L, Liu F, Baudys M, Kim SW. Synthesis and characterization of poly(ethylene glycol)-insulin conjugates. *Bioconjug Chem.* 2000;11(2):195–201.
43. MacDougall IC, Roberts DE, Coles GA, Williams JD. Clinical pharmacokinetics of epoetin (recombinant human erythropoietin). *Clin Pharmacokinet.* 1991;20(2):99–113.
44. Emmanouel DS, Goldwasser E, Katz AI. Metabolism of pure human erythropoietin in the rat. *Am J Physiol.* 1984;247(1 Pt 2):F168–F176.
45. Kinoshita H, Ohishi N, Kato M, Tokura S, Okazaki A. Pharmacokinetics and distribution of recombinant erythropoietin in rats. *Arzneimittelforschung.* 1992;42(2):174–178.
46. Davis ME, Chen ZG, Shin DM. Nanoparticle therapeutics: an emerging treatment modality for cancer. *Nat Rev Drug Discov.* 2008;7(9):771–782.
47. Banerjee A, Onyuksel H. Human pancreatic polypeptide in a phospholipid-based micellar formulation. *Pharm Res.* 2012;29(6):1698–1711.
48. Elliott S, Lorenzini T, Chang D, Barzilay J, Delorme E. Mapping of the active site of recombinant human erythropoietin. *Blood.* 1997;89(2):493–502.

International Journal of Nanomedicine

Publish your work in this journal

The International Journal of Nanomedicine is an international, peer-reviewed journal focusing on the application of nanotechnology in diagnostics, therapeutics, and drug delivery systems throughout the biomedical field. This journal is indexed on PubMed Central, MedLine, CAS, SciSearch®, Current Contents®/Clinical Medicine,

Submit your manuscript here: <http://www.dovepress.com/international-journal-of-nanomedicine-journal>

Journal Citation Reports/Science Edition, EMBase, Scopus and the Elsevier Bibliographic databases. The manuscript management system is completely online and includes a very quick and fair peer-review system, which is all easy to use. Visit <http://www.dovepress.com/testimonials.php> to read real quotes from published authors.

Dovepress