

POPE study: rationale and methodology of a study to phenotype patients with COPD in Central and Eastern Europe

Zuzana Zbozinkova,¹ Adam Barczyk,² Ruzena Tkacova,³ Arshang Valipour,⁴ Neven Tudoric,⁵ Kirill Zykov,⁶ Attila Somfay,⁷ Marc Miravitlles,⁸ Vladimir Koblizek⁹

¹Institute of Biostatistics and Analyses, Faculty of Medicine, Masaryk University, Brno, Czech Republic;

²Department of Pneumology, School of Medicine in Katowice, Medical University of Silesia, Katowice, Poland; ³Department of Respiratory Medicine, Faculty of Medicine, P.J. Safarik University, Kosice, Slovakia;

⁴Department of Respiratory and Critical Care Medicine, Ludwig-Boltzmann-Institute for COPD and Respiratory Epidemiology, Otto-Wagner-Spital, Wien, Austria; ⁵School of Medicine Zagreb, University Hospital Dubrava, Zagreb, Croatia;

⁶Laboratory of Pulmonology, Moscow State University of Medicine and Dentistry named after A.I. Evdokimov, Moscow, Russia; ⁷Department of Pulmonology, University of Szeged, Deszk, Hungary; ⁸Pneumology Department, Hospital Universitari Vall d'Hebron, CIBER de Enfermedades Respiratorias (CIBERES), Barcelona, Spain; ⁹Department of Pneumology, Faculty of Medicine in Hradec Kralove, University Hospital Hradec Kralove, Charles University in Prague, Hradec Kralove, Czech Republic

Correspondence: Vladimir Koblizek
Department of Pneumology, Faculty of Medicine in Hradec Kralove, University Hospital Hradec Kralove, Charles University in Prague, Sokolska 581, 500 05 Hradec Kralove, Czech Republic
Tel +420 723 448 641
Email vladimir.koblizek@fnhk.cz

Introduction: Chronic obstructive pulmonary disease (COPD) constitutes a major health challenge in Central and Eastern European (CEE) countries. However, clinical phenotypes, symptom load, and treatment habits of patients with COPD in CEE countries remain largely unknown. This paper provides a rationale for phenotyping COPD and describes the methodology of a large study in CEE.

Methods/design: The POPE study is an international, multicenter, observational cross-sectional survey of patients with COPD in CEE. Participation in the study is offered to all consecutive outpatients with stable COPD in 84 centers across the CEE region if they fulfill the following criteria: age >40 years, smoking history ≥ 10 pack-years, a confirmed diagnosis of COPD with postbronchodilator $FEV_1/FVC < 0.7$, and absence of COPD exacerbation ≥ 4 weeks. Medical history, risk factors for COPD, comorbidities, lung function parameters, symptoms, and pharmaceutical and nonpharmaceutical treatment are recorded. The POPE project is registered in ClinicalTrials.gov with the identifier NCT02119494.

Outcomes: The primary aim of the POPE study was to phenotype patients with COPD in a real-life setting within CEE countries using predefined classifications. Secondary aims of the study included analysis of differences in symptoms, and diagnostic and therapeutic behavior in participating CEE countries.

Conclusion: There is increasing acceptance toward a phenotype-driven therapeutic approach in COPD. The POPE study may contribute to reveal important information regarding phenotypes and therapy in real-life CEE.

Keywords: COPD, phenotypes, Central Europe, Eastern Europe, study, GOLD, comorbidity

Introduction

Chronic obstructive pulmonary disease (COPD) is a major cause of death worldwide and represents an important public health challenge.¹ On the basis of multiple studies that have been published since the 1970s, the estimate of COPD prevalence ranges between 5% and 10%.^{2,3} According to the World Health Organization estimates, COPD is predicted to become the third leading cause of death by 2030, and the burden of COPD is projected to further increase in coming decades due to continued exposure to COPD risk factors and aging of the population.⁴⁻⁶ While the major risk factor is tobacco smoking, other risk factors include age, a previous history of bronchial asthma, genetic predisposition, and respiratory infections.⁷⁻¹² In addition to these factors, environmental and occupational exposure to gases and particles and indoor biomass inhalation may also substantially contribute to the development of COPD in affected populations.^{13,14}



Although numerous studies and clinical trials regarding clinical presentation, diagnosis, and management of COPD have been recently published, very few of these studies have specifically focused on Central and Eastern Europe (CEE).^{15–23} However, patients with COPD in CEE might present with different features of the disease due to differences in environmental and nonenvironmental risk factors, age of onset of disease, comorbidities, health care access, and the level of reimbursement for COPD treatment. Thus, the objectives of the “Phenotypes of COPD in Central and Eastern Europe Study” (POPE study) are to gain a better understanding of these patient characteristics and treatment patterns of patients diagnosed with COPD among different CEE countries. This is the first CEE, multicenter, investigator-initiated, collaborative project of its kind. The purposes of this paper are to provide an introduction to the study methodology and to raise awareness toward a current hot topic in COPD research, namely, the issue of COPD phenotyping.

Methods/design

Study design

The POPE study is an international, multicenter, observational cross-sectional survey in patients with COPD in CEE. Eleven

CEE countries participated in the study: Austria, Bulgaria, Croatia, Czech Republic, Hungary, Latvia, Poland, Russia, Serbia, Slovakia, and Slovenia (Figure 1). The complete list of participating centers is listed in Table 1. A Steering Committee consisting of eight physicians is responsible for the scientific integrity of the study (Table 2). Each participating country is represented by one national leading expert, who coordinates the study at the national level (Table 1). Within each participating country, investigators selected by the national expert are appointed and are responsible for local data collection and organization of care. The first patient (FPI) in the database was documented in April 2014. The expected end of patient enrollment in all countries was July 2015.

The objectives

The primary aim of this study was to assess the prevalence of COPD phenotypes according to predefined criteria in an unselected group of consecutively examined patients with stable COPD in the CEE region in a real-life setting (Figure 2). Secondary aims of the study included analysis of differences in symptom load, and diagnostic and therapeutic behavior in patients classified into different phenotypes. As the POPE study will actively recruit patients with COPD due to environmental risk factors other than smoking, separate analysis will be



Figure 1 Map of participating countries.

Table I POPE study – participating centers

| | |
|-----------------------|--|
| Austria | |
| National expert | Assoc Prof Arschang Valipour, MD, PhD Ludwig Boltzmann Institute, Wien AKH Linz, Department of Pulmonary Medicine Pulmonary Rehab Centre, Therme Wien Department of Internal Medicine, University Innsbruck SKA der PV Weyer/Enns, Mühleln |
| Bulgaria | |
| National expert | Assoc Prof Kosta Kostov, MD, PhD Pulmonary Diseases Clinic, Military Medical Academy, Sofia Clinic for Pneumology and Phisiatry, UMHAT “Dr Georgi Stranski”, Pleven Clinic of Pulmonology, MHAT “St Marina”, Varna Department of Respiratory Diseases, Medical University, Plovdiv |
| Croatia | |
| National expert | Prof Neven Tudoric, MD, PhD University Hospital Dubrava, Zagreb University Hospital Centre, Zagreb University Hospital Centre, Split University Hospital Centre, Rijeka Clinical Hospital, Osijek |
| Czech Republic | |
| National expert | Vladimir Koblizek, MD, PhD Outpatient Department of Pneumology and Pulmonary Diagnostics, Karlovy Vary Pneumological Outpatient Department, Mepha-Centrum, Ostrava Pneumology Centre, Teplice Department of Pneumology, University Hospital Hradec Králové and Faculty of Medicine in Hradec Králové of the Charles University in Prague |
| Hungary | |
| National expert | Prof Attila Somfay, MD, PhD Csongrád County Hospital for Chest Diseases, Deszk IZO PULM Health Service Ltd., Budapest St Elizabeth Hospital Pulmonary Care Institute, Jászberény Szarvas Respiratory Ltd., Szarvas Újpest Non-Profit Health Care Services Ltd., Budapest Elizabeth House Care Ltd., Gödöllő Medical Institution of Dr Laszlo Romics Pulmonary Care, Érd Szabolcs-Szatmár-Bereg County Hospitals and University Teaching Hospital, Nyíregyháza Baja St Rókus Hospital Patient Lung Care Institute, Baja |
| Latvia | |
| National expert | Prof Alvis Krams, MD, PhD Regional Hospital of Liepaja Kuldīga Hospital SIA “BINI”, Ventspils Health Centre Talsi Ambulatory Clinic Jelgava Bauska Hospital Ambulatory Clinic Dubulti, Jurmala Privat practice Ilona Uzbeka, Valka Privat practice Dace Harasimjuka, Valmiera Madona Hospital Health Centre Balvi Private practice Viktorija Vevere, Rezekne Regional Hospital of Jekabpils Pauls Stradins Clinical University Hospital, Riga Riga East Clinical University Hospital, “Gailezers”, Riga Riga East Clinical University Hospital, In-patient Department “Centre of Tuberculosis and Lung Diseases”, Riga LU MPI Institute private practice, Riga Riga 1st Hospital, Riga |

(Continued)

Table 1 (Continued)

| | |
|-----------------|---|
| | Health Centre 4, Ltd, Riga UniClinic, Riga |
| Poland | |
| National expert | Assoc Prof Adam Barczyk, MD, PhD Oddział Chorób Płuc i Niewydolności Oddychania, Kujawsko – Pomorskie, Centrum Pulmonologii w Bydgoszczy, Bydgoszcz Katedra i Klinika Chorób Wewnętrznych, Pneumonologii i Alergologii, Samodzielny Publiczny Centralny Szpital Kliniczny, Warszawa Klinika Alergologii i Pneumonologii, Uniwersyteckie Centrum Kliniczne, Szpital Gdańskiego Uniwersytetu Medycznego, Gdańsk Oddział Chorób Płuc, Wojewódzkie Centrum Szpitalne Kotliny Jeleniogórskiej, Jelenia Góra Katedra i Klinika Pulmonologii, Alergologii i Onkologii Pulmonologicznej, Uniwersytet Medyczny im. Karola Marcinkowskiego w Poznaniu, Poznań Szpital Uniwersytecki, Oddział Kliniczny Kliniki Pulmonologii, Kraków Katedra i Klinika Pneumonologii, Śląski Uniwersytet Medyczny, Katowice |
| Russia | |
| National expert | Prof Kirill Zykov, MD, PhD Pulmonology Research Institute, Moscow Ufa State City Clinical Hospital 21, Ufa Clinic of Pulmonology of Scientific and Clinical Center of Interstitial and Orphan Lung Diseases, St Petersburg State Budget Educational Institution of High Professional Education “Kazan State Medical University”, Kazan Vladivostok Clinical Hospital #1, Vladivostok I.M. Sechenov First Moscow State Medical University, University Hospital #1, Outpatient Department, Moscow GBOU VPO Samara State Medical University, Samara Moscow State University of Medicine and Dentistry named after A.I. Evdokimov, Moscow |
| Serbia | |
| National expert | Prof Branislava Milenkovic, MD, PhD Clinic for Pulmonary Diseases, Clinical Centre of Serbia, Belgrade Institute for Pulmonary Diseases and TB, Clinical Centre Vojvodina, Novi Sad Clinic for Pulmonary Diseases, Clinical Center of Niš Clinic for Pulmonary Diseases, Clinical Centre Kragujevac Municipal Institute for Lung Diseases and Tuberculosis, Belgrade |
| Slovakia | |
| National expert | Prof Ruzena Tkacova, MD, PhD Ambulancia pneumológie a ftizeológie Doc. MUDr Ján Plutinský, CSc, Levice Pľúcna ambulancia, Poprad MUDr Katarína Arpášová – Dionea, s.r.o., Nové Zámky Klinika pneumológie a ftizeológie LF SZU a UNB, Bratislava NsP, Považská Bystrica Zdravotné stredisko Fedinova, Bratislava Klinika tuberkulózy a respiračných chorôb JLF UK a UNM, Martin FNsP F.D. Roosevelta, Banská Bystrica NsP Sv. Jakuba, Bardejov Zdravotné stredisko Rimava, Rimavská Sobota |
| Slovenia | |
| National expert | Jurij Šorli, MD, PhD Bolnišnica Topolšica, Topolšica Alveola, d.o.o., Maribor Zdravstveni dom Murska Sobota, Murska Sobota |

Table 2 POPE study – Steering Committee

| Steering Committee members | |
|----------------------------|---------------------------------------|
| Austria | Assoc Prof Arschang Valipour, MD, PhD |
| Croatia | Prof Neven Tudoric, MD, PhD |
| Czech Republic | Vladimir Koblizek, MD, PhD |
| Hungary | Prof Attila Somfay, MD, PhD |
| Poland | Assoc Prof Adam Barczyk, MD, PhD |
| Russia | Prof Kirill Zykov, MD, PhD |
| Slovakia | Prof Ruzena Tkacova, MD, PhD |
| Spain | Prof Marc Miravittles, MD, PhD |

conducted to ascertain differences with a matched cohort of “smokers-related” COPD. The long-term aims of the POPE study are to educate and raise awareness for COPD phenotypes among both physicians and patients to support an individualized patient treatment approach in clinical practice.

Participants

All consecutive patients with COPD examined at office-based physician and outpatient clinics from different institutions

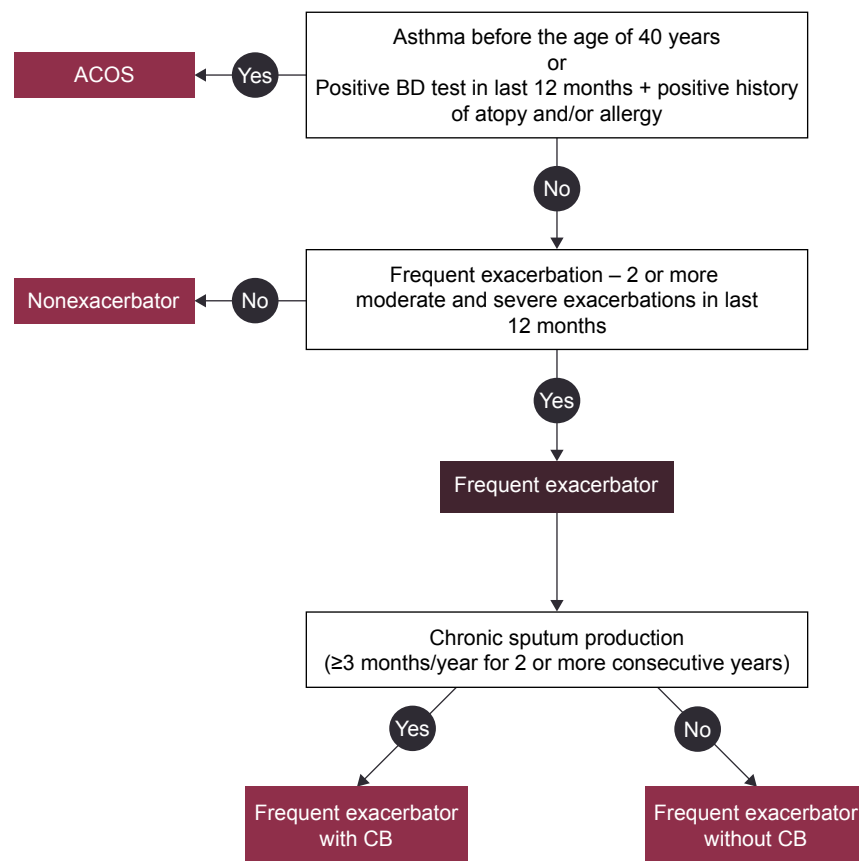


Figure 2 Definition of phenotypes.

Abbreviations: ACOS, asthma–COPD overlap syndrome; BD, bronchodilator; CB, chronic bronchitis.

were enrolled in this study if they fulfill the following inclusion criteria: age more than 40 years, confirmed diagnosis of COPD with postbronchodilator forced expired volume in 1 second/forced vital capacity (FEV_1/FVC) <0.7 , and absence of exacerbation for at least 4 weeks. The rationale for inclusion criteria imply the following points. The presence of postbronchodilator airflow limitation among persons over age 40 years is the common definition of COPD cases used worldwide. Younger subjects with bronchial obstruction represent rather a rarity. Moreover, airflow limitation in people below 40 years of age may be due to other causes (asthma, bronchiolitis, primary ciliary dyskinesia, etc). Acute exacerbation of COPD has multiple negative effects on lung functions and respiratory symptoms (important parameters of our research). Therefore, we have used 4-week exacerbation-free interval as an elimination factor against bias (in term of symptoms and pulmonary functions). POPE study patients were divided into Group A if they have a smoking history equal and/or more than 10 pack-years and Group B if they were nonsmokers or smokers of less than 10 pack-years with evidence of inhalation exposure to other risk factors. Other risk factors were also counted: workplace

environment, frequent exposure to outdoor pollution, frequent exposure to indoor pollution, and cooking without ventilation. COPD is clearly defined as an enhanced chronic inflammatory response to inhaled noxious particles and/or gases. Accordingly, non-/low-smoking patients without the aforementioned predefined risk factors were excluded from POPE study. Patient enrollment started in April 2014 and continued through July 2015; thus, a relevant seasonal bias of recruitment was prevented.

Study protocol

The study protocol was conceived to capture all data routinely available for clinical phenotyping during one visit. The parameters selected were identified by the Steering Committee (Table 2) together with a panel of national experts. An electronic case report form (eCRF) was used for local data collection.

For each patient, an in-depth history was obtained, including information on allergy and atopy, COPD symptoms (dyspnoea at rest/during exercise, fatigue, cough, chronic sputum production, purulent expectoration, and hemoptysis), smoking status and other respiratory risk factors, history of

acute respiratory events, including the number of COPD exacerbations with or without hospitalization, concomitant respiratory and nonrespiratory diseases, and assessment of the body composition (weight and height were routinely measured before spirometry, and self-reported weight loss or weight gain [absolute, relative rate] were registered as well). Comorbidities were scored using the Charlson comorbidity index.²⁴ Physical examination was performed on each patient. Pulmonary function data were obtained using standard equipment according to the ATS/ERS consensus guidelines.²⁵ The European Community of Coal and Steel reference equations were used in the POPE study. Postbronchodilator spirometry values for assessing COPD disease severity were reported in all patients (mandatory data). Furthermore, additional information regarding results obtained from bronchodilator reversibility testing, body plethysmography, diffusion capacity, fractional exhaled nitric oxide (FeNO), thoracic computed tomography, echocardiography, blood/sputum eosinophil assessment, serum immunoglobulin (IgE) measurement, arterial blood gases (ABG), and hematocrit (HCT) were recorded, if available, and performed within the last 12 months. Because this is a noninterventional study, obtaining the aforementioned additional information was considered optional. Thus, the information provided in this context represents the true level of diagnostic investigations for COPD in CEE countries. Patients included were classified into the Global Initiative for chronic Obstructive Lung Disease (GOLD) risk classification category on the basis of postbronchodilator FEV₁, history of COPD exacerbations, respiratory symptoms using the modified Medical Research Council (mMRC) dyspnea scale, and the COPD Assessment Test (CAT).^{1,26,27} With regard to CAT, total CAT score and all CAT subitems were separately noted. Any pharmaceutical treatment prescribed for COPD for at least 1 month was recorded together with medications for typical comorbidities. Nonpharmaceutical therapeutic options, including long-term oxygen therapy (LTOT), use of noninvasive ventilation, bronchoscopic or surgical volume reduction procedures, and/or relevant vaccinations for individual patients were recorded as well. An overview of the collected data is listed in Table 3. Patients were stratified according to predefined phenotypes. The phenotypes proposed by the Steering Committee consensus were consistent with a recent recommendation from Spain proposing four clinically defined groups (Figure 2).²⁸ The following simple algorithm was used to determine the phenotype: 1) patients with a previous diagnosis of asthma were considered a mixed COPD–asthma phenotype (asthma–COPD overlap syndrome, ACOS), 2) patients with less than two exacerbations in the previous year were classified as

Table 3 POPE study – captured parameters

| Form | Parameter | |
|--|---|----------------------------|
| History | Demographic data | |
| | Age of first diagnosis | |
| | History of allergy/atopy | |
| | COPD symptoms | |
| | Smoking history | |
| | Other than tobacco smoking risk factors ^a | |
| | History of acute respiratory events | |
| | Concomitant respiratory diseases | |
| | Weight assessment | |
| | Comorbidities – Charlson comorbidity index | |
| | Comorbidities – others | |
| | Physical examination | BMI |
| | | Heart and breath frequency |
| Physical signs of COPD and heart failure signs | | |
| Pulmonary function tests, laboratory | Postbronchodilator spirometry values | |
| | Body plethysmography (TLC and RV) ^b | |
| | TL _{CO} and K _{CO} ^b | |
| | Bronchodilator test ^b | |
| | Bronchial challenge test ^b | |
| | FeNO ^b | |
| | HRCT of thorax ^b | |
| | Echocardiography ^b | |
| | Blood/sputum eosinophil assessment ^b | |
| | 6-minute walk test ^b | |
| | Total serum IgE measurement ^b | |
| | ABG ^b | |
| | HCT ^b | |
| Questionnaires | CAT (total score and all 8 items separately) | |
| | mMRC | |
| Treatment | COPD pharmacological and nonpharmacological treatment | |
| | Other respiratory treatment | |
| | LTOT | |
| | Surgery and BVR | |
| | Vaccination | |
| | Nonrespiratory concomitant treatment | |

Notes: ^aRequired in nonsmokers, ^boptional.

Abbreviations: ABG, arterial blood gas; BMI, body mass index; BVR, bronchoscopic lung volume reduction; CAT, the COPD assessment test; COPD, chronic obstructive pulmonary disease; FeNO, fractional exhaled nitric oxide; HCT, hematocrit; HRCT, high-resolution computed tomography; IgE, immunoglobulin E; K_{CO}, Krogh factor; LTOT, long-term oxygen therapy; mMRC, modified Medical Research Council dyspnea scale; RV, residual volume; TLC, total lung capacity; TL_{CO}, transfer factor.

nonexacerbators, 3) exacerbators with self-reported chronic cough and expectoration for more than 3 months of the year over 2 consecutive years were described as exacerbators with chronic bronchitis, and 4) the remaining exacerbators were classified as exacerbators without chronic bronchitis (predominantly with emphysema).²⁹

Analytical methods

Categorical variables were described by absolute and relative values. Median supplemented by the 5th–95th percentile range was used for continuous variables; a valid N was

reported in the case of missing values in continuous variables. Mean supplemented by standard deviation or 95% confidence interval was adopted for continuous variables when normality of the data was proven. Statistical significance of differences in continuous variables between/among groups of patients was analyzed using the Mann–Whitney *U*-test and Kruskal Wallis test, and Student's *t*-test for two groups or analysis of variance (ANOVA) followed by Tukey post hoc test. Paired *t*-test and/or the Wilcoxon paired test was used to analyze the statistical significance of differences of continuous variables between study time points; the McNemar test was used for the same purpose for categorical variables. Factors influencing binary end points without time to event and censoring (1 year mortality, etc) were analyzed using logistic regression. $\alpha=0.05$ was used as a level of statistical significance. Analyses were performed using SPSS 22.0.0 (IBM Corporation, Armonk, NY, USA, 2013).

Sample size calculation

The background information from the available literature regarding the proportion of patients in different GOLD categories and occurrence of COPD phenotypes was utilized in the power analysis prior to the study.^{9,10,30} The aim of the power analysis was to determine the sample size required to detect statistically significant differences in the prevalence of COPD phenotypes and other classification groups of interest, such as GOLD (1–4) and GOLD (A–D) measured as relative risk (RR) between participating countries within POPE study. Power analysis revealed that the optimal number of patients from the CEE region should be 3,500. This total number enables the observation of differences between various countries or groups of countries within the entire CEE region (sufficient precision guaranteed: approximately $\pm 4\%$ or $\pm 2\%$ within each participating country with categories/phenotypes of 20% or 5% prevalence, respectively; detectable RR of categories/phenotypes of 20% prevalence at least 1.5; detectable RR of categories of 5% prevalence nearly 2.0). Finally, we estimated a prevalence of nonsmoking subjects in approximately 5%–10% of the CEE COPD population.^{31,32}

Organization of the study

The POPE study was an investigator-initiated study by a group of COPD researchers predominantly from CEE countries who recently formed a research forum called the “COPD Platform”. This study was managed and supervised by the Steering Committee, which was responsible for the design and scientific integrity of the study (Table 2). The project management and statistical background was provided by the Institute of Biostatistics and Analyses, Masaryk University

(Brno, Czech Republic). Data in the POPE study were entered into a database system, which was originally based on a modified version of the TrialDB system.^{33–35} The TrialDB system is an easy and accessible tool for parametric data collection, validation, statistical processing, and online data management in compliance with respective legislation. A similar design was used in the multicenter, observational, cross-sectional PUMA study performed in Argentina, Colombia, Uruguay, and Venezuela.³⁶ The online application is accessible to users via the Internet browser. The security of individual records within the registry is ensured via deidentified data collection. An encryption protocol is used for data transfer between the user and central database to prevent tapping the communication between the client and server. For this reason, any communication between the client and server is achieved via the secure protocol HyperText Transfer Protocol Secure, using Secure Socket Layer encryption. The security of individual records within the registry is ensured via deidentified data collection.

The POPE study was registered in ClinicalTrials.gov with the identifier NCT02119494. More information can be obtained at <http://www.copdplatform.com/>. The sponsor of the study is the Ludwig Boltzmann Institute for COPD and Respiratory Epidemiology, Vienna, Austria. The research institute received an unrestricted research grant from Boehringer Ingelheim RCV GmbH & Co. KG, which provided partial support for this study but had no influence on the rationale, methodology, or analysis.

Ethics

This study was performed in accordance with the European Union laws and the respective laws of participating countries. The study, protocol, informed consent, and patient information were submitted to ethic committees in the respective countries and to regulatory agencies, where required. The rights, safety, and well-being of clinical investigation subjects were protected according to the ethical principles of the Declaration of Helsinki. All patients (except Poland, where Ethic Committee approval was not required) were requested to provide their informed consent.

Discussion

Phenotyping patients with COPD has received increasing awareness in recent years.^{37–41} A phenotype is defined as “a single or combination of disease attributes that describe differences between individuals with COPD as they relate to clinically meaningful outcomes”.³⁷ A phenotypic approach to classify COPD has been adopted by a number of national and international societies.^{9,29,42–44} It is actively used by the

Czech and Spanish COPD guidelines to promote treatment tailored to disease presentation, beyond singular treatment of airflow obstruction.^{42,43} However, there is no general consensus on the number of phenotypes and the precise definition. Furthermore, we may need to acknowledge that individual patients may qualify for more than one phenotype.⁴² A recent Spanish guideline proposed a classification of patients with COPD according to phenotypes similar to those used in the POPE study: infrequent exacerbators, frequent exacerbators with emphysema, frequent exacerbators with chronic bronchitis predominance, and the ACOS.^{29,43} The definition of ACOS remains controversial; however, it may include the presence of COPD with either allergic rhinitis, bronchial hyperresponsiveness, and/or a previous diagnosis of asthma with reversible airflow obstruction.⁴⁵ The four (aforementioned) elementary COPD phenotypes used in the POPE study were based on routine clinical practice as they have some treatment consequences. Undoubtedly, wide scope of gathered parameters allows to evaluate the presence of COPD subjects with other disease “phenotypes”, for example, COPD with pulmonary cachexia, COPD with high burden of comorbidities. Using these patient profiles in a recently published, observational, multicenter study of 3,125 patients with COPD, Miravittles et al²⁸ observed a distribution of 60% nonexacerbators, 18% patients with ACOS, 19% exacerbators with chronic bronchitis, and 4% exacerbators without chronic bronchitis. While ACOS patients were more frequently females with better lung function, exacerbators presented with the most severe disease, with little difference between those with and without chronic bronchitis.

What is the clinical relevance of phenotyping patients with COPD?

First, there is evidence of differences in outcomes between different phenotypes. Burgel et al⁴⁶ observed significant differences in mortality when stratifying patients into phenotypes on the basis of airflow obstruction, evidence of emphysema, body mass index, and comorbidities. Using a very comprehensive and in-depth assessment of 342 patients with COPD, including symptoms, quality of life, exercise capacity, nutritional status, biomarkers of systemic and bronchial inflammation, sputum microbiology, computed tomography of the thorax, and echocardiography in addition lung function, Garcia-Aymerich et al⁴⁷ similarly demonstrated substantial differences in hospitalization rates and all-cause mortality between patient clusters. Second, there is increasing recognition and clinical acceptance to treat patients according to their phenotypic predominance.

Infrequent exacerbators, defined as patients experiencing <2 exacerbations per year, may be treated with bronchodilation alone, and withdrawal of inhaled glucocorticoids may be safe in this particular population, according to data from recent studies.^{48,49} Patients with COPD and a diagnosis of asthma may in turn have a survival benefit when treated with inhaled corticosteroids.⁵⁰ Similarly, augmented anti-inflammatory treatment, such as Roflumilast, may only improve exacerbation rates in patients with chronic bronchitis and frequent exacerbations, whereas in patients with emphysema, there is no therapeutic benefit.⁵¹ The POPE study furthermore investigated whether patients received nonpharmacological treatments in the past, such as long-term oxygen therapy, noninvasive ventilation, or lung volume reduction procedures (surgical or endoscopic).

Why performing a study of COPD phenotypes in CEE?

Many previous studies have attempted to identify and quantify the prevalence of different phenotypes of COPD using populations of various sources, severities, and particularities. The health care system, however, may substantially differ in CEE compared with other systems around the globe. Differences in environmental pollution, smoking prevalence, and comorbidities may substantially contribute to differences in the level of burden of COPD across the CEE region.^{52,53} The POPE study specifically investigated symptom load, comorbidities, lung function, and exacerbation rates in both smoking and never-smoking patients with COPD in CEE and compared the results between these two groups. In fact, the prevalence of COPD in lifelong nonsmoking subjects in Poland was found to be 12%, whereas the prevalence of COPD in the nonsmoking population from Western countries usually ranged between 2% and 4%.^{31,32} These differences may potentially be due to differences in mean fine particulate matter (PM_{2.5}) concentrations in CEE compared with Western Europe.⁵⁴ Moreover, different risks could lead to different clinical presentation of COPD syndrome. COPD of nonsmoking females due to biomass smoke exposure for instance is characterized by less emphysema but more air trapping than COPD due to tobacco smoke exposure.⁵⁵ On the other hand, access to modern therapeutic modalities due to differences in copayment may be different between Western and Eastern European countries, thus affecting prescribing behavior.⁵⁶ The POPE study shed new light onto the therapeutic relevance of phenotypes in a real-life setting in CEE. The multinational and multicenter approach in the POPE study was chosen not only to describe the status of patient care across the CEE region but also within the individual

participating countries. Finally, in contrast to many Western European countries where patients with COPD are mostly under the long-term supervising care of general practitioners, in CEE countries, these patients are rather taken care of by respiratory specialists (Table 4).^{30,42,57–59}

Limitations

The POPE study design has a number of limitations that need to be acknowledged. First, it is a purely cross-sectional study aimed at assessing the prevalence of predefined phenotypes, without being able to validate these phenotypes prospectively on the basis of outcomes. Nevertheless, eligible patients underwent pre- and postbronchodilator spirometry, and completed a standardized questionnaire on demographics, environmental risk factors, symptoms, comorbidities, management, and use of health care resources.³⁶ The information provided through this comprehensive assessment is novel for the CEE region. Second, the POPE study was performed in multiple centers with different levels of health care access and differences in diagnostic and therapeutic approaches. Lung function assessment was performed in accordance with international guidelines, but without further standardizations or core laboratory evaluations. Thus, we cannot rule out differences in quality measures of performing these and other tests that might impact the comparability between sites and between countries. Nevertheless, the information provided in this context might also be considered the strength of the POPE study, as it provides real-life data regarding important information about the diagnostic approach and treatment modalities of patients with COPD in CEE.

Table 4 POPE study – distribution of COPD patients between general practitioners and pulmonologists in CEE

| Country | PoPe study cohort ^a | | General approach in country ^b | |
|----------------|--------------------------------|---------|--|---------|
| | Pulmonologists (%) | GPs (%) | Pulmonologists (%) | GPs (%) |
| Austria | 100 | 0 | 60 | 40 |
| Bulgaria | 100 | 0 | 50 | 50 |
| Croatia | 100 | 0 | 50 | 50 |
| Czech Republic | 100 | 0 | 95 | 5 |
| Hungary | 100 | 0 | 100 | 0 |
| Latvia | 100 | 0 | NA | NA |
| Poland | 100 | 0 | 50 | 50 |
| Russia | 100 | 0 | 50 | 50 |
| Serbia | 100 | 0 | 100 | 0 |
| Slovakia | 100 | 0 | 100 | 0 |
| Slovenia | 100 | 0 | NA | NA |
| Spain | Nonparticipant | | 25 | 75 |

Notes: ^aClear data, ^bapproximation by Steering Committee members.

Abbreviations: CEE, Central and Eastern Europe; GPs, general practitioners; NA, nonavailable.

Conclusion

The POPE provides new data regarding symptoms, clinical presentation, and treatment modalities of patients with COPD observed in daily clinical practice in the CEE region. This study may further prompt future research collaborations within participating countries with the intention to answer a number of other important unaddressed questions, such as the natural course of phenotypes, real-life prescription behavior in treatment-naïve patients, and/or regional differences in treatment adherence. The long-term aims of the POPE study, however, are to educate and raise awareness for phenotypes of COPD and its potential implications regarding treatment and outcomes among both physicians and patients.

Acknowledgments

The authors thank the staff of all of the study centers for their cooperation in collecting the study data. The POPE study was supported by an unrestricted scientific grant by Boehringer Ingelheim, RCV. Special thanks to the participating countries and their national experts, who were not a part of the Steering Committee, but who greatly contributed to the enrollment of patients. National experts are part of the author collective of the main manuscript describing results of the project. The eCRF design and statistical analysis for sample size calculation was performed by J Jarkovsky, J Svancara, and M Uher, from the Institute of Biostatistics and Analyses.

Author contributions

All authors contributed to this manuscript: ZZ and VK wrote the manuscript; MM, AV, RT, AB, NT, AS, and KZ provided valuable reviews and comment. The study design was prepared by the Steering Committee: AV, VK, RT, NT, AS, KZ, AB, and MM. MM carried out the phenotype-based view of study design and coordinated the entire project proposal. AV and VK carried out the CRF and study protocol. ZZ participated in the electronic CRF design and performed statistical analysis plan and sample size calculation. RT, AB, and ZZ carried out the study validation. NT, AS, and KZ participated in the design of the study. All authors contributed toward data analysis, drafting and revising the paper and agree to be accountable for all aspects of the work.

Disclosure

Zuzana Zbozinkova is an employee of Institute of Biostatistics and Analyses, Masaryk University. Institute of Biostatistics and Analyses has received research grants

from (in alphabetical order) AstraZeneca, Bayer, Boehringer Ingelheim, GlaxoSmithKline, Novartis, Pfizer, and Roche.

Adam Barczyk gave presentations at symposia sponsored and received fees for advisory board participation and travel grants from Boehringer Ingelheim, Chiesi, Novartis, Pfizer, Takeda, and Teva.

Ruzena Tkacova has received speaker and consulting fees from AstraZeneca, Boehringer Ingelheim, GlaxoSmithKline, and Novartis.

Arschang Valipour received honoraria for consultancy services during advisory board meetings and/or lecture fees from AstraZeneca, Boehringer Ingelheim, Chiesi, GlaxoSmithKline, and Novartis. He received research grants from Boehringer Ingelheim.

Neven Tudoric has received reimbursement for attending scientific conferences, and/or fees for speaking and/or consulting from AstraZeneca, Boehringer Ingelheim, Cipla, Chiesi, GlaxoSmithKline, Novartis, Pliva-Teva, Sandoz, and Takeda. He was reimbursed for participation on the advisory boards for AstraZeneca, Boehringer Ingelheim, and Novartis.

Kirill Zykov is an investigator for, has received research support from, and is a consultant and/or speaker for AstraZeneca, Bayer, Boehringer Ingelheim, KrKa, Novartis, Takeda, and Thermo Fisher Scientific.

Atilla Somfay has received speaker fees from AstraZeneca, Berlin-Chemie, Boehringer Ingelheim, Chiesi, GlaxoSmithKline, Novartis, and Orion Pharma and has received consulting fees from AstraZeneca, Berlin-Chemie, Boehringer Ingelheim, Chiesi, GlaxoSmithKline, Novartis, and Orion Pharma.

Marc Miravittles has received speaker fees from Almirall, AstraZeneca, Boehringer Ingelheim, Esteve, Chiesi, GlaxoSmithKline, Grifols, Menarini, Novartis, and Pfizer and has received consulting fees from Almirall, Boehringer Ingelheim, CSL Behring, Gebro Pharma, GlaxoSmithKline, Grifols, MedImmune, Novartis, Pfizer, and Takeda.

Vladimir Koblicek gave presentations at symposia and sponsored and received fees for advisory board participation and travel grants from AstraZeneca, Berlin-Chemie, Boehringer Ingelheim, GlaxoSmithKline, Medicom, Mundipharma, Novartis, and Takeda. He received research grants from AstraZeneca, Boehringer Ingelheim, and Novartis. The authors report no other conflicts of interest in this work.

References

1. Goldcopd.com [homepage on the Internet]. Global Initiative for Chronic Obstructive Lung Disease; Global Strategy for the Diagnosis, Management, and Prevention of Chronic Obstructive Pulmonary Disease; c2013 [updated January 2014; cited November 8, 2014]. Available from: http://www.goldcopd.org/uploads/users/files/GOLD_Report_2014_Jun11.pdf. Accessed November 8, 2014.
2. Erswitebook.org [homepage on the Internet]. European Lung White Book; European Respiratory Society; c2013 [updated 2015; cited August 6, 2015]. Available from: <http://www.erswhitebook.org/chapters/chronic-obstructive-pulmonary-disease/>. Accessed August 6, 2015.
3. Buist AS, McBurnie MA, Vollmer WM, et al. International variation in the prevalence of COPD (the BOLD Study): a population-based prevalence study. *Lancet*. 2007;370(9589):741–750.
4. Who.int [homepage on the Internet]. Chronic obstructive pulmonary disease (COPD). World Health Organisation; c2007 [updated January 2015; cited August 6, 2015]. Available from: <http://www.who.int/mediacentre/factsheets/fs315/en/>. Accessed August 6, 2015.
5. Lopez AD, Shibuya K, Rao C, et al. Chronic obstructive pulmonary disease: current burden and future projections. *Eur Respir J*. 2006;27(2):397–412.
6. Qaseem A, Wilt TJ, Weinberger SE, et al. Diagnosis and management of stable chronic obstructive pulmonary disease: a clinical practice guideline update from the American College of Physicians, American College of Chest Physicians, American Thoracic Society, and European Respiratory Society. *Ann Intern Med*. 2011;155(3):179–191.
7. De Marco R, Accordini S, Antò JM, et al. Long-term outcomes in mild/moderate chronic obstructive pulmonary disease in the European Community Respiratory Health Survey. *Am J Respir Crit Care Med*. 2009;180(10):956–963.
8. Gould NS, Min E, Gauthier S, et al. Aging adversely affects the cigarette smoke-induced glutathione adaptive response in the lung. *Am J Respir Crit Care Med*. 2010;182(9):1114–1122.
9. Barrecheguren M, Esquinas C, Miravittles M. The asthma-chronic obstructive pulmonary disease overlap syndrome (ACOS): opportunities and challenges. *Curr Opin Pulm Med*. 2015;21(1):74–79.
10. Soler-Cataluña JJ, Cosío B, Izquierdo JL, et al. Consensus document on the overlap phenotype COPD-asthma in COPD. *Arch Bronconeumol*. 2012;48(9):331–337.
11. Weiss ST. What genes tell us about the pathogenesis of asthma and chronic obstructive pulmonary disease. *Am J Respir Crit Care Med*. 2010;181(11):1170–1173.
12. Matkovic Z, Tudoric N, Miravittles M. Impact of chronic bronchial infection in the lung and beyond. *Eur Respir Mon*. 2013;60:46–57.
13. Hnizdo E, Sullivan PA, Bang KM, Wagner G. Association between chronic obstructive pulmonary disease and employment by industry and occupation in the US population: a study of data from the Third National Health and Nutrition Examination Survey. *Am J Epidemiol*. 2002;156(8):738–746.
14. Torres-Duque C, Maldonado D, Pérez-Padilla R, et al. Biomass fuels and respiratory diseases. *Proc Am Thorac Soc*. 2008;5(5):577–590.
15. Leuppi JD, Schuetz P, Bingisser R, et al. Short-term vs conventional glucocorticoid therapy in acute exacerbations of chronic obstructive pulmonary disease: the REDUCE randomized clinical trial. *JAMA*. 2013;309(21):2223–2231.
16. Qaseem A, Hopkins R, Kutty K, et al [homepage on the Internet]. Management of Chronic Obstructive Pulmonary Disease: Review of the Performance Measures by the Performance Measurement Committee of the American College of Physicians. American College of Physicians; c2015 [updated 2015; cited August 6, 2015]. Available from: http://www.acponline.org/clinical_information/performance_measurement/measures/pmc_copd_review.pdf. Accessed August 6, 2015.
17. Tashkin DP, Rennard SI, Uryniak T, et al. Effect Of Budesonide/Formoterol (BUD/FM) Versus FM Alone On The Rate Of Exacerbations (Either Including Or Excluding The Use Of Antibiotics As Part Of Exacerbation Definition), Lung Function, And Rescue Medication Use In Patients With Moderate To Very Severe Chronic Obstructive Pulmonary Disease (COPD). B39 COPD exacerbations: precipitating factors, prevention, and outcome [homepage on the Internet]. American Thoracic Society 2014; A2882–A2882; c1998–2015 [updated 2015; cited August 6, 2015]. Available from: http://www.atsjournals.org/doi/abs/10.1164/ajrccm-conference.2014.189.1_MeetingAbstracts.A2882. Accessed August 6, 2015.

18. Montuschi P, Malerba M, Santini G, Miravittles M. Pharmacological treatment of chronic obstructive pulmonary disease: from evidence-based medicine to phenotyping. *Drug Discov Today*. 2014;19(12):1928–1935.
19. Dong YH, Lin HH, Shau WY, et al. Comparative safety of inhaled medications in patients with chronic obstructive pulmonary disease: systematic review and mixed treatment comparison meta-analysis of randomised controlled trials. *Thorax*. 2013;68(1):48–56.
20. Wedzicha JA, Decramer M, Ficker JH, et al. Analysis of chronic obstructive pulmonary disease exacerbations with the dual bronchodilator QVA149 compared with glycopyrronium and tiotropium (SPARK): a randomised, double-blind, parallel-group study. *Lancet Respir Med*. 2013;1(3):199–209.
21. Barnes N, Calverley PM, Kaplan A, Rabe KF. Chronic obstructive pulmonary disease and exacerbations: patient insights from the global Hidden Depths of COPD survey. *BMC Pulm Med*. 2013;13:54.
22. Emerman CL. Effectiveness of inhaled steroids in the management of chronic obstructive pulmonary disease. *Curr Emerg Hosp Med Rep*. 2013;1(4):189–192.
23. Jayaram L, Wong C, McAuley S, et al. Combined therapy with tiotropium and formoterol in chronic obstructive pulmonary disease: effect on the 6-minute walk test. *COPD*. 2013;10(4):466–472.
24. Charlson ME, Pompei P, Ales KL, MacKenzie CR. A new method of classifying prognostic comorbidity in longitudinal studies: development and validation. *J Chronic Dis*. 1987;40(5):373–383.
25. Thoracic.org [homepage on the Internet]. ATS documents: statements, guidelines & reports. American Thoracic Society; c1998–2015 [updated 2015; cited February 12, 2015]. Available from: <http://www.thoracic.org/statements/>. Accessed February 12, 2015.
26. Bestall JC, Paul EA, Garrod R, et al. Usefulness of the Medical Research Council (MRC) dyspnoea scale as a measure of disability in patients with chronic obstructive pulmonary disease. *Thorax*. 1999;54(7):581–586.
27. Jones PW, Harding G, Berry P, et al. Development and first validation of the COPD assessment test. *Eur Respir J*. 2009;34(3):648–654.
28. Miravittles M, Barrecheguren M, Roman-Rodriguez M. Frequency and characteristics of different clinical phenotypes of COPD. *Int J Tuberc Lung Dis*. 2015;19(8):992–998.
29. Miravittles M, Soler-Cataluña JJ, Calle M, Soriano JB. Treatment of COPD by clinical phenotypes: putting old evidence into clinical practice. *Eur Respir J*. 2013;41(6):1252–1256.
30. Higgins V, Price D, Baker CL, et al. Real-world characterization and differentiation of the Global Initiative for Chronic Obstructive Lung Disease strategy classification. *Int J Chron Obstruct Pulmon Dis*. 2014;9:551–561.
31. Bang KM. Chronic obstructive pulmonary disease in nonsmokers by occupation and exposure: a brief review. *Curr Opin Pulm Med*. 2015;21(2):149–154.
32. Zielinski J, Bednarek M, Górecka D, et al. Increasing COPD awareness. *Eur Respir J*. 2006;27(4):833–852.
33. Nadkarni PM, Brandt CM, Frawley S, et al. Managing attribute – value clinical trials data using the ACT/DB client – server database system. *J Am Med Inform Assoc*. 1998;5(2):139–151.
34. Nadkarni PM, Brandt CM, Marengo L. WebEAV: automatic metadata-driven generation of web interfaces to entity-attribute-value databases. *J Am Med Inform Assoc*. 2000;7(4):343–356.
35. Nadkarni PM, Marengo L. Easing the transition between attribute-value databases and conventional databases for scientific data. *Proc AMIA Symp*. 2001;483–487.
36. Schiavi E, Stirbulov R, Hernández Vecino R, et al. COPD screening in primary care in four Latin American countries: methodology of the PUMA study. *Arch Bronconeumol*. 2014;50(11):469–474.
37. Han MK, Agusti A, Calverley PM, et al. Chronic obstructive pulmonary disease phenotypes. *Am J Respir Crit Care Med*. 2010;182(5):598–604.
38. Lee YM. Chronic obstructive pulmonary disease: respiratory review of 2014. *Tuberc Respir Dis (Seoul)*. 2014;77(4):155–160.
39. Blasi F, Chalmers JD, Aliberti S. COPD and bronchiectasis: phenotype, endotype or co-morbidity? *COPD*. 2014;11(6):603–604.
40. Novotna B, Koblizek V, Zatloukal J, et al. Czech multicenter research database of severe COPD. *Int J Chron Obstruct Pulmon Dis*. 2014;9:1265–1274.
41. Allen-Ramey FC, Gupta S, DiBonaventura MD. Patient characteristics, treatment patterns, and health outcomes among COPD phenotypes. *Int J Chron Obstruct Pulmon Dis*. 2012;7:779–787.
42. Koblizek V, Chlumsky J, Zindr V, et al. Chronic Obstructive Pulmonary Disease: official diagnosis and treatment guidelines of the Czech Pneumological and Phthysiological Society; a novel phenotypic approach to COPD with patient-oriented care. *Biomed Pap Med Fac Univ Palacky Olomouc Czech Repub*. 2013;157(2):189–201.
43. Miravittles M, Soler-Cataluña JJ, Calle M, et al. Spanish guideline for COPD (GesEPOC). Update 2014. *Arch Bronconeumol*. 2014;50(Suppl 1):1–16.
44. Louie S, Zeki AA, Schivo M, et al. The asthma-chronic obstructive pulmonary disease overlap syndrome: pharmacotherapeutic considerations. *Expert Rev Clin Pharmacol*. 2013;6(2):197–219.
45. Miravittles M, Soler-Cataluña JJ, Cale M, et al. A new approach to grading and treating COPD based on clinical phenotypes: summary of the Spanish COPD guidelines (GesEPOC). *Prim Care Respir J*. 2013;22(1):117–121.
46. Burgel PR, Paillasseur JL, Peene B, et al. Two distinct chronic obstructive pulmonary disease (COPD) phenotypes are associated with high risk of mortality. *PLoS One*. 2012;7(12):e51048.
47. Garcia-Aymerich J, Gómez FP, Benet M, et al. Identification and prospective validation of clinically relevant chronic obstructive pulmonary disease (COPD) subtypes. *Thorax*. 2011;66(5):430–437.
48. Magnussen H, Disse B, Rodriguez-Roisin R, et al. Withdrawal of inhaled glucocorticoids and exacerbations of COPD. *N Engl J Med*. 2014;371(14):1285–1294.
49. Rossi A, Guerriero M, Corrado A. Withdrawal of inhaled corticosteroids can be safe in COPD patients at low risk of exacerbation: a real-life study on the appropriateness of treatment in moderate COPD patients (OPTIMO). *Respir Res*. 2014;15:77.
50. Gershon AS, Campitelli MA, Croxford R, et al. Combination long-acting β -agonists and inhaled corticosteroids compared with long-acting β -agonists alone in older adults with chronic obstructive pulmonary disease. *JAMA*. 2014;312(11):1114–1121.
51. Rennard SI, Calverley PM, Goehring UM, et al. Reduction of exacerbations by the PDE4 inhibitor roflumilast—the importance of defining different subsets of patients with COPD. *Respir Res*. 2011;12:18.
52. Nizankowska-Mogilnicka E, Mejza F, Buist AS, et al. Prevalence of COPD and tobacco smoking in Malopolska region—results from the BOLD study in Poland. *Pol Arch Med Wewn*. 2007;117(9):402–410.
53. Golec M, Skórska C, Mackiewicz B, et al. Relationship between COPD and lower socioeconomic status in farmers from South-Eastern Poland (Lublin region). *Rural Remote Health*. 2014;14:2531.
54. Eea.europa.eu [homepage on the Internet]. European environment agency; Air quality in Europe – 2014 report; 35; c2015 [updated July 30, 2015; cited August 6, 2015]. Available from: <http://www.eea.europa.eu/publications/air-quality-in-europe-2014>. Accessed August 6, 2015.
55. Camp PG, Ramirez-Venegas A, Sansores RH, et al. COPD phenotypes in biomass smoke-versus tobacco smoke-exposed Mexican women. *Eur Respir J*. 2014;43(3):725–734.
56. Davidova J, Praznovcova L, Lundborg CS. Pricing and reimbursement of pharmaceuticals in the Czech Republic and Sweden. *Pharm World Sci*. 2008;30(1):57–64.
57. Celli BR, MacNee W, Agusti A, et al. Standards for the diagnosis and treatment of patients with COPD: a summary of the ATS/ERS position paper. *Eur Respir J*. 2004;23(6):932–946.
58. Bellamy D, Bouchard J, Henrichsen S, et al. International Primary Care Respiratory Group (IPCRG) guidelines: management of chronic obstructive pulmonary disease (COPD). *Prim Care Respir J*. 2006;15(1):48–57.
59. Jones PW, Brusselle G, Dal Negro RW, et al. Patient-centred assessment of COPD in primary care: experience from a cross-sectional study of health-related quality of life in Europe. *Prim Care Respir J*. 2012;21(3):329–336.

International Journal of COPD

Dovepress

Publish your work in this journal

The International Journal of COPD is an international, peer-reviewed journal of therapeutics and pharmacology focusing on concise rapid reporting of clinical studies and reviews in COPD. Special focus is given to the pathophysiological processes underlying the disease, intervention programs, patient focused education, and self management protocols.

This journal is indexed on PubMed Central, MedLine and CAS. The manuscript management system is completely online and includes a very quick and fair peer-review system, which is all easy to use. Visit <http://www.dovepress.com/testimonials.php> to read real quotes from published authors.

Submit your manuscript here: <http://www.dovepress.com/international-journal-of-chronic-obstructive-pulmonary-disease-journal>