

Changes in respiratory function impairment following the treatment of severe pulmonary tuberculosis – limitations for the underlying COPD detection

Milan Radovic^{1,2}Lidija Ristic^{1,2}Zorica Ciric^{1,2}Violeta Dinic-Radovic³Ivana Stankovic^{1,2}Tatjana Pejic^{1,2}Milan Rancic^{1,2}Dragan Bogdanovic⁴¹Department of Internal Medicine, Faculty of Medicine, University of Nis,²Clinic for Lung Diseases, ³Clinic for Gastroenterology and Hepatology, Clinical Centre of Nis, ⁴Public Health Institute Nis, Nis, Republic of Serbia

Background: During the treatment phase of active pulmonary tuberculosis (PTB), respiratory function impairment is usually restrictive. This may become obstructive, as a PTB-associated airflow obstruction (AFO) or as a later manifestation of underlying COPD.

Purpose: The aim of the study was to examine the potential causes and risks for AFO development in PTB by exploring the aspects of spirometry limitations and clinical implications for the underlying COPD detection, taking into account various confounding factors.

Patients and methods: Prospective, nest case-control study on 40 new cases of PTB with initial restrictive respiratory function impairment, diagnosed and treated according to the directly observed treatment short course (DOTS) strategy.

Results: From all observed patients, 37.5% of them developed AFO upon the completion of PTB treatment, with significantly increased average of forced vital capacity (%) ($P < 0.01$). Their changes in forced expiratory volume in the first second (%) during the PTB treatment were strongly associated with the air pollution exposure in living (0.474%–20.971% for 95% confidence interval [CI]; $P = 0.041$) and working environments (3.928%–20.379% for 95% CI; $P = 0.005$), initial radiological extent of PTB lesions (0.018%–0.700% for 95% CI; $P = 0.047$), leukocyte count (0.020%–1.328% for 95% CI; $P = 0.043$), and C-reactive protein serum level (0.046%–0.205% for 95% CI; $P = 0.003$) compared to the other patients. The multivariate logistic regression analysis model shows initial radiological extent of pulmonary tuberculosis lesions (OR 1.01–1.05 for 95% CI; $P = 0.02$) and sputum conversion rate on culture (OR 1.02–1.68 for 95% CI; $P = 0.04$) as the most significant predictors for the risk of AFO development.

Conclusion: AFO upon PTB treatment is a common manifestation of underlying COPD, which mostly occurs later, during the reparative processes in active PTB, even in the absence of major risk factors, such as cigarette smoking and biomass fuel dust exposure. Initial spirometry testing in patients with active PTB is not a sufficient and accurate approach in the detection of underlying COPD, which may lead to their further potential health deterioration.

Keywords: tuberculosis, pulmonary, respiratory function tests, lung diseases, obstructive

Correspondence: Milan Radovic
Department of Internal Medicine, Faculty of Medicine, University of Nis, Boulevard Dr Zorana Djindjica 81, 18000 Nis, Republic of Serbia
Tel/fax +381 1865 2035
Email milanradovic@ptt.rs

Introduction

Severe (extensive) forms of active pulmonary tuberculosis (PTB), with its long-term evolution in cases of bronchogenic forms of the disease, contribute to serious destruction of lung parenchyma, including permanent scarring, bronchiectasis, and fibrosis, leading to significant respiratory function impairment.^{1,2} It is estimated that COPD

affects 65 million people worldwide, most of them in low- and middle-income countries, where the prevalence of PTB remains high.^{3,4}

During the treatment phase of active PTB, respiratory ventilation impairment is usually restrictive. This may persist, resolve, or become obstructive in nature, as a PTB-associated airflow obstruction (AFO) or as a late manifestation of already existing (underlying) COPD itself.^{4,5} Causes and development of AFO in patients with active PTB, in addition to the factors of infection, involve contributing factors of the patient (genetic factors, systemic inflammation response, and initial extent of PTB lesions), as well as from the environment (tobacco-smoking habits, air pollution, and economic income), while clinically manifested bronchial obstruction occurs as their mutual interplay.⁶⁻⁸ Recent studies indicate the strong association of matrix-metalloproteinase system in remodeling mechanisms of pulmonary extracellular matrix in the pathogenesis of AFO and also in extensive PTB, as in COPD.⁹⁻¹¹ A relationship between active PTB and COPD developments has been suggested in several reports, but a serious limitation in these studies was the lack of diagnostic precision in distinguishing COPD from the other forms of structural lung disease (eg, bronchiectasis, bullous parenchymal destruction, and fibrosis), which are common in PTB.^{12,13} Based on the results of the few available longitudinal studies, the association of PTB and AFO appears to be causal.⁴ Several mechanisms may account for the development of AFO and even clinically manifested COPD, after the active infection in PTB, including the structural damage of airways, bronchiolar narrowing, and bronchiolitis obliterans, as well as accelerated emphysematous change, caused by residual, chronic, or recurrent inflammation.¹³ Previous studies of the origin of AFO in active PTB in individuals with or without underlying COPD have not shown the reliable solutions for adequate detection and differentiation of the major risks for the development of these pulmonary ventilation disorders.⁴⁻⁸

The aim of this study was to examine the potential causes and risks for AFO development in PTB, exploring the aspects of spirometry limitations and clinical implications for the presence of underlying COPD and its detection in patients with extensive PTB and initial restrictive respiratory function impairment, which are treated only with antituberculosis drugs over the standard 6-month regimen, taking into account the hereditary burden of COPD, air pollution exposure in living and working environments, smoking habits, radiological extent of PTB lesions, sputum conversion rate, and nonspecific systemic inflammatory response.

Patients and methods

Patients – the subjects of the study

The research was performed as a prospective, nest case-control study in the Clinic for Lung Diseases, Faculty of Medicine, University of Nis, Nis, Serbia, on 40 carefully selected patients defined as new cases of extensive (severe) PTB (new cases of PTB with cavities and pericavitary parenchymal fibrocavitory infiltrates on standard chest radiograph) and initial (according to the first lung function test results) restrictive respiratory function (pulmonary ventilation) impairment, who were diagnosed and treated according to the directly observed treatment short course (DOTS) strategy and National Tuberculosis Programme of the Republic of Serbia, in the period from January 2005 to December 2012.¹⁴ Among the 541 tuberculosis (TB) patients diagnosed in our clinic during the period, 83 patients were identified as new cases of extensive PTB with initial restrictive respiratory function impairment. After reviewing the obtained data by applying the exclusion criteria, 43 patients were excluded from the study, and 40 patients were enrolled for the final analysis. The criteria for initial restrictive respiratory function impairment according to the Official Statement of the European Respiratory Society were as follows: forced expiratory volume in the first second (FEV₁)/forced vital capacity (FVC) × 100% ≥ 70%, level of postbronchodilation FVC ≤ 80%, and level of total lung capacity (TLC) < 5% of the reference values.¹⁵

The study protocol was reviewed and approved by the Academic Council of Faculty of Medicine, University of Nis (No 04-642/04, December 13, 2005). The study procedures were conducted according to the tenets of the Declaration of Helsinki. Written informed consent was obtained from all study patients after an explanation of the nature of the study and confirmed by the Academic Council of Faculty of Medicine, University of Nis. All study patients were Serbian Caucasians recruited from the Clinic for Lung Diseases.

The inclusion criteria for the selection of patients in this study were as follows: 1) typical symptoms for PTB (cough, sputum production, fever, night sweat, and weight loss); 2) negative personal history of TB and/or TB treatment; 3) typical fibrocavitory pulmonary infiltrates on standard chest radiographs; 4) at least one smear positive sputum, with the subsequent positive culture of *Mycobacterium tuberculosis*; and 5) all study patients, at the time of inclusion in the study, were ≥ 20 years of age and could already have been on the antituberculosis treatment (processed with all necessary radiological, microbiological, and laboratory and spirometric examinations, before starting the antituberculosis treatment) but not for > 2 weeks.

The exclusion criteria for the patients in this study were as follows: 1) detection of mono- or multidrug-resistant TB bacilli in the first positive sputum culture; 2) coexisting lung disease, defined as reliable confirmation of lung pathology other than TB; and 3) patients with chronic heart, liver, and kidney failures, metabolic disorders, and pregnancy.

Risk factors for COPD, such as familial burden, air pollution exposure in living and working environments for >15 years, and smoking habits, were determined from medical history data, while the level of nicotine dependence in smoking patients was determined by filling the specific questionnaire of Fagerst orm's test.¹⁶

Determining the radiological extent of PTB lesions

Chest radiographs were collected at the beginning of PTB treatment and after 6 months, ie, at the end of PTB treatment. Interpretation of the extent of PTB lesions was performed by two clinicians who made an assessment and came to an agreement without prior access to the lung function test results, scoring the lesions, whereby each lung was divided into equal thirds, each of them scored on four-level scale from 0 to 3 points, with a maximal radiographic score of 18.¹²

Bacteriological sputum analysis

Initially, at the beginning of anti tuberculosis treatment, sputum samples were taken in a series of three consecutive morning samples and analyzed by direct smear microscopy (Ziehl–Neelsen stained) and plating the same samples to Lowenstein–Jensen culture, as well as the resistance test on the first-line anti tuberculosis drugs, from the first positive culture. Furthermore, during the intensive phase of treatment, sputum conversion rate was checked in a series of two consecutive morning samples on a weekly level, and during the continuation phase of treatment, the rate was checked in a series of two consecutive morning samples on a monthly level.¹⁴

Measurements of inflammatory serum markers

The following parameters were determined: erythrocyte sedimentation rate (ESR) in the first hour (mm/1 h), leukocyte (Le) count expressed in $10^9/L$, which was obtained by peripheral blood smear, serum levels of C-reactive protein (CRP) (mg/L), and fibrinogen (g/L). The parameters of hematological and biochemical analyses mentioned earlier were determined at the beginning and after 6 months of TB treatment.

Lung function measurements

Respiratory function measurements were carried out in the morning, by spirometry testing, determined by the standard spirometric parameters, as follows: FVC (%), FEV₁ (%), and their percentage ratio (FEV₁/FVC×100%) (%) and TLC (%), by body plethysmography testing (Version 4.54 gb; Master Lab system, E. Jaeger, W urzburg, Germany). For a final value of each of the examined lung function parameters, the best score of the respondents from three consecutive measurements was taken. A pharmacodynamic bronchodilation test of reversibility was performed, with 400 µg of salbutamol in metered dose inhalation spray on all patients, before entering the study. Remeasurement of FEV₁ was performed 30 minutes after the inhalation, and positive result was considered as an increase of 200 mL of FEV₁ or ≥12% from the baseline level. Criteria for restrictive respiratory function impairment were as follows: FEV₁/FVC×100%≥70%, level of postbronchodilation FVC ≤80%, and level of TLC <5% of the reference values.^{15,17,18} Pulmonary function test was performed on the following three occasions: 1) at the beginning of the intensive phase of TB treatment, 2) at the end of the intensive phase of TB treatment (ie, after 2 months), and 3) at the end of the continuation phase of TB treatment (after 6 months).

Statistical analysis

Statistical calculations were performed using the SPSS software Version 10.0. Comparison of mean values of numerical characteristics between the three separate occasions of lung function measurements was done by single factor analysis of variance with Tukey's post hoc test. The values of inflammatory markers at the beginning and at the end of the PTB treatment of observed patients were compared by Wilcoxon signed rank test. Analysis of the relationship between changes in FEV₁ (%) values and factors of interest (major risk factors for COPD, such as familial burden for COPD, air pollution exposure in living and working environments for >15 years, and smoking habits, such as smoker, nonsmoker, pack/years index, Fagerst orm's score, and nicotine dependence level), factor of PTB activity (radiographic score at the beginning and at the end of PTB treatment and sputum conversion rate by microscopy and on culture), and factors of systemic inflammatory response (values of inflammatory serum markers, such as ESR, CRP, and fibrinogen, at the beginning and at the end of PTB treatment), adjusted for age, sex, and body mass index (BMI) values during the PTB treatment was performed by univariate linear regression analysis (calculated the linear regression coefficient [β] and its 95% CI). The significance of the regression coefficient was checked by linear regression

t-test. To assess the impact of the same major risk factors for COPD, systemic inflammatory response, and PTB activity on the development and characterization of residual AFO upon the TB treatment, the logistic regression analysis was applied, adjusted for age, sex, and BMI values. Assessing the value of statistical significance was performed by calculating the odds ratio (OR) Wald values. Factors for which the univariate logistic regression showed significant influence on the occurrence of AFO were included in multivariate regression models.¹⁹

Results

Based on defined criteria, our study identified 83 out of 541 TB patients diagnosed as new cases of extensive PTB with restrictive respiratory function impairment from the territory of Nisava District, Republic of Serbia, with the population of 371,003 inhabitants, overall TB incidence of 25-14/10⁵, from 2005 to 2012, with 88%–85% of new cases, 5%–13.5% relapses, and successful treatment outcome of 34%–62.8% annually.

The obtained data were reviewed, and 43 patients were excluded for the following reasons: 1) seven patients were relapses of PTB (medical history data), 2) five patients also had TB pleurisy (high-resolution CT scan and thoracentesis), 3) 14 patients had coexisting lung diseases (five patients with massive bacterial pneumonia, three patients with lung cancer, four patients with chronic respiratory failure, and two patients with sarcoidosis) (medical history data, high-resolution CT scan, fiberoptic bronchoscopy with biopsy and bronchial lavage histopathology, cytology and microbiological confirmation, and arterial blood gas analysis), 4) eleven patients had chronic disease (four patients with heart failure, two patients with liver cirrhosis, three patients with renal failure, one patient with rheumatoid arthritis, and one patient with Crohn's disease), and 5) there was loss of data or all the measurements were not made for six patients. Thus, 40 patients with definitive diagnosis of new cases of extensive PTB with restrictive respiratory function impairment were enrolled for the final analysis.

Demographic, clinical, and laboratory profiles

Demographic and clinical aspects of examined patients are shown in Table 1. The majority of patients were

current smokers, with an average pack/year index of 1.36±0.67/29.61±12.83 and a high average nicotine dependence level of 6.26±2.14 Fargestörm score points (Table 2). Generally, ten (22.5%) patients did not have any risk factors for COPD (Table 3).

The average radiological extent of PTB lesions during TB treatment was significantly reduced from 10.23±4.04 radiographic score points at the beginning to 3.93±2.44 points at the end ($P<0.001$), with an average reduction of 6.30±2.65 points. The average sputum smear conversion rate was 2.90±2.07 weeks, while on culture it was 4.12±2.24 weeks. The average values of inflammation serum marker levels (ESR, Le count, CRP, and fibrinogen), were significantly reduced during the PTB treatment ($P<0.001$) (Table 4).

Pulmonary function test

Initially, 16 (39.0%) patients had mild restrictive pulmonary ventilation disorder, eleven (27.5%) patients had moderate restrictive pulmonary ventilation disorder, and three (8.0%) patients had severe restrictive pulmonary ventilation disorder (Figure 1).

A positive response to bronchodilation test was verified in 7.7% of patients, while the average baseline level of TLC (%) increased until the end of PTB treatment, with no significant difference. The average baseline level of FVC (%) was lower and significantly increased during the PTB treatment ($P<0.01$), as opposed to FEV₁ (%) (Table 5).

Linear regression analysis confirmed significant association between changes in the values of FEV₁ (%), resulting in TB treatment completion, and the value of some risk factors for COPD, PTB activity, and factors of systemic inflammation, adjusted for age, sex, and BMI. Patients exposed to air pollution in indoor living and working environments for >15 years had significant higher changes in FEV₁ (%) of 10.722% (0.474%–20.971% for 95% CI; $P=0.041$) and 12.153% (3.928%–20.379% for 95% CI; $P=0.005$), respectively, during the TB treatment when compared to the other patients. On the other hand, any increase in radiographic score, Le count, and CRP at the beginning of TB treatment for just one measurement unit was strongly associated with significantly increased changes in FEV₁ (%)

Table 1 General demographic profile of observed patients

General demographic characteristics of patients									
Age (years) (mean ± SD)	Weight (kg) (mean ± SD)	Sex (n/%)		Population settlement (n/%)		Social structure (n/%)			
		Male	Female	Urban	Rural	Employed	Retired	Unemployed	
55.8±16.31	62.98±14.35	32/80.0	8/20.0	20/50.0	20/50.0	16/40.0	15/37.5	9/22.5	

Abbreviation: SD, standard deviation.

Table 2 The major familial and environmental risks for COPD development among observed patients

Risk factors for COPD									
Familial burden for COPD (n/%)		Environmental air pollution exposure ≥ 15 years (n/%)				Smoking habits (n/%)			
		Indoor	Outdoor	Occupational		Smokers	Exsmokers	Nonsmokers	
11/27.5		7/17.5	2/5.0	12/30.0		27/67.5	1/2.5	12/30.0	
Fargestörm score (n/%)						Weight loss (n/%)			No COPD risks (n/%)
Without	Very low	Low	Moderate	High	Very high	≤ 10 kg	11–20 kg	21–30 kg	
1/3.7	1/3.7	2/7.4	4/14.8	8/29.6	11/40.7	4/10.0	21/52.5	15/37.5	11/27.5

Note: Fargestörm score, a score of nicotine dependence level.

after the TB treatment completion: radiographic score of 0.359% (0.018%–0.700% for 95% CI; $P=0.047$), Le count of 0.674% (0.020%–1.328% for 95% CI; $P=0.043$), and CRP of 0.126% (0.046%–0.205% for 95% CI; $P=0.003$) (Figure 2).

Outcome

From the initial findings of restrictive pulmonary ventilation disorder, upon the completion of PTB treatment, 15 (37.5%) of all observed patients developed the AFO. In those patients, a univariate logistic regression analysis, adjusted for age, sex, and BMI, confirmed that occupational air pollution exposure for >15 years increases the risk of AFO development for 7%, but the level of error estimates of such claim in the sample is at a level of $<10\%$ (OR 0.99–1.16 for 95% CI; $P=0.07$). On the other hand, any increase in initial value of radiographic score of one measurement unit increases the risk of AFO development for 4% (OR 1.02–1.06 for 95% CI; $P=0.01$), as well as initial CRP serum level for 3% (OR 1.01–1.05 for 95% CI; $P=0.02$), initial Le count for 2% (OR 1.01–1.03 for 95% CI; $P=0.03$), and sputum conversion rate on culture for 39% (OR 1.05–1.84 for 95% CI; $P=0.04$), while any increase in fibrinogen serum level upon the TB treatment completion decreases the risk of AFO development for 36% (OR 0.42–0.98 for 95% CI; $P=0.04$) (Figure 3).

In multivariate logistic regression analysis model, adjusted for age, sex, and BMI, the most significant predictors for the development of AFO in the observed patients upon TB treatment completion were radiographic score at the beginning of TB treatment and sputum conversion rate on

culture. Any increase in those predictors of one measurement unit significantly increases the risk of AFO development, as follows: radiographic score at the beginning of the TB treatment for 3% (OR 1.01–1.05 for 95% CI; $P=0.02$) and sputum conversion rate on culture for 31% (OR 1.02–1.68 for 95% CI; $P=0.04$) (Figure 4).

Discussion

According to the current GOLD criteria, there is increasing awareness of the heterogeneity of COPD. These criteria require the presence of chronic airflow limitation (CAO) that persists after use of a bronchodilator and a history of exposure to recognized risk factors for the development of AFO. Among these risks, the most common are cigarette smoking, biomass fuel dust exposure, childhood lung infections, and occupational exposures, including exposure to dust, gases, and fumes.^{4,20} The absence of tobacco-smoking history occurs in $>20\%$ of patients fulfilling the criteria for COPD by spirometry and has been reported in many population-based studies.^{21,22} Whether TB should be added to the list of recognized exposures for the future development of COPD is unclear.

A number of studies have shown that the treatment of pulmonary TB only with antituberculosis drugs may lead to the emergence or worsening of existing AFO in some patients.^{6,23} Some prospective studies with a longer follow-up period demonstrated a significant number of cases affected and/or treated for PTB, which had the same result in CAO, or the restrictive respiratory syndrome.^{22,24} In patients with active PTB, CAO occurs in 52.7% infiltrative, 56.6% fibrous

Table 3 Clinical signs for COPD among the observed patients

Respiratory symptoms and signs (n/%)						Average duration of symptoms in days (mean \pm SD)	Positive physical examination on AFO (n/%)	Presence of LRTI (n/%)
Dyspnea	Cough	Expectoration	Hemoptysis	Fever	Overnight sweating			
28/70.0	39/97.5	33/82.5	11/27.5	11/27.5	26/65.0	67.55 \pm 54.78	15/37.5	9/22.5

Abbreviations: AFO, airflow obstruction; LRTI, low respiratory tract infection; SD, standard deviation.

Table 4 Comparing the values of serum markers of systemic inflammation

Serum markers of systemic inflammation	I measurement (beginning of the PTB treatment)	II measurement (end [6 months] of the PTB treatment)	Significance*	Difference between measurements
ESR (mm/l hour)	67.20±30.54	17.85±17.02	Z=5.42; P<0.001	49.35±30.45
Le count (10 ⁹ L)	9.14±4.59	6.81±2.14	Z=3.48; P<0.001	2.33±4.12
CRP (mg/L)	58.45±45.95	7.58±9.23	Z=5.51; P<0.001	50.86±46.09
Fibrinogen (g/L)	7.77±3.52	4.57±1.66	Z=4.29; P<0.001	3.20±3.43

Notes: Le count, leukocyte count in peripheral blood smear. *Wilcoxon signed rank test. Data presented as mean ± standard deviation unless stated otherwise.

Abbreviations: CRP, C-reactive protein; ESR, erythrocyte sedimentation rate; Le, leukocyte; PTB, pulmonary tuberculosis.

and cavitory, and even 88.2% miliary forms.²³ It is debatable whether PTB-associated CAO should be considered as a part of the COPD spectrum, as a distinct phenotype of COPD, or as an unrelated disease. However, based on the results of the few available longitudinal studies, the association of PTB with CAO appears to be causal.⁴ The strongest body of evidence comes from three large population-based, cross-sectional studies that showed a statistically significant association between previous PTB and COPD. These cross-sectional studies, such as PLATINO (N=5,571), PREPOCOL (N=5,539), and the study by Lam et al (N=8,066), provide an adjusted OR of between 1.37 and 2.94 for this association between previous PTB and COPD, an association greater than that with either cigarette smoking or wood-smoke exposure in the PREPOCOL study.^{7,24,25} In addition, in the PLATINO study, a history of PTB was associated with more severe grades of bronchial obstruction.⁷ Our earlier case-control study on PTB patients with initial normal respiratory ventilation confirmed the influence of positive familial history on COPD together with initial radiological extent of PTB lesions and sputum conversion rate on culture as significant predictive factors for the residual AFO upon TB treatment completion, but the lack of further follow-up information could not confirm a subsequent diagnosis of COPD with certainty.²⁶ These findings are also supported by the smaller cross-sectional, cohort, and case-control studies.^{6,22,27}

Cigarette smoking is the only external agent, which is cause-related to the occurrence and development of CAO in COPD. Reviewing the smoking habits of patients in our study, our results corresponded to available literature data.²⁸ Den Boon et al²⁹ confirmed the increase in COPD morbidity and mortality as a consequence of various respiratory tract infections, including PTB. In our investigation, 22.5% of patients were without any risk factors for COPD, which is in accordance with similar results in the available literature.^{4,5,21}

Although the extensive destruction of lung parenchyma in PTB with consequent restriction of airflow through the bronchial tree is clinically relatively common, the severity of AFO and bronchodilator response have still not been evaluated objectively.^{6,8,22,23} Most of all symptoms and limitations, including AFO, of these patients in everyday practice consider as a consequence of active or cured pulmonary TB and in most cases ignored the emergence of severe clinical manifestations and complications. All the mechanisms of systemic inflammatory response in the pathogenesis of AFO in active PTB remained still unclear, but it is certain that some inflammatory conditions act as exclusively linked. In our study, the observed patients had initially pathologically elevated average values of all observed systemic proinflammatory indices, which were significantly decreased to the normal ones at the end of the treatment, or subclinical values, which can be explained by

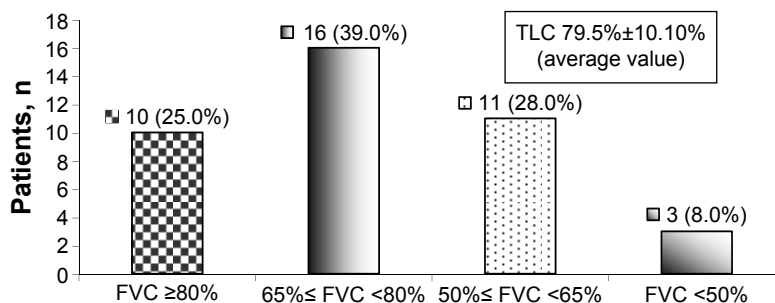


Figure 1 Distribution of patients according to the severity of the initially registered restrictive pulmonary ventilation disorder.

Note: Grading of severity was done according to the Official Statement of the European Respiratory Society.¹⁵

Abbreviations: FVC, forced vital capacity; TLC, total lung capacity.

Table 5 Comparing the values of pulmonary ventilation parameters between the measurements made at the beginning, during, and at the end of the PTB treatment with the differences between the same

Lung function parameter	I measurement (beginning of the PTB treatment)	II measurement (2 months of the PTB treatment)	III measurement (6 months of the PTB treatment)	Significance*	Differences between measurements*		
					I vs II	II vs III	I vs III
FVC (%)	71.36±13.62	74.25±19.14	77.39±15.36	I vs III: $P < 0.01$	-2.88±15.48	-3.14±12.44	-6.02±13.96
FEV ₁ (%)	73.54±16.33	72.77±17.85	71.99±20.08	No significance	0.77±10.22	0.78±8.23	1.55±12.17
FEV ₁ /FVC ×100%	80.93±8.59	76.16±7.51	74.46±10.47	I vs II: $P < 0.001$; I vs III: $P < 0.001$	4.76±6.75	1.70±7.48	6.46±9.00
TLC (%)	79.5±10.10	-	80.30±15.91	No significance	-	-	-0.80±13.05

Notes: FEV₁/FVC ×100%, percentage ratio of FEV₁/FVC. Data presented as mean ± standard deviation. *One-way ANOVA and Tukey's post hoc test.
Abbreviations: ANOVA, analysis of variance; FEV₁, forced expiratory volume in the first second; FVC, forced vital capacity; PTB, pulmonary tuberculosis; TLC, total lung capacity; -, no measurement made.

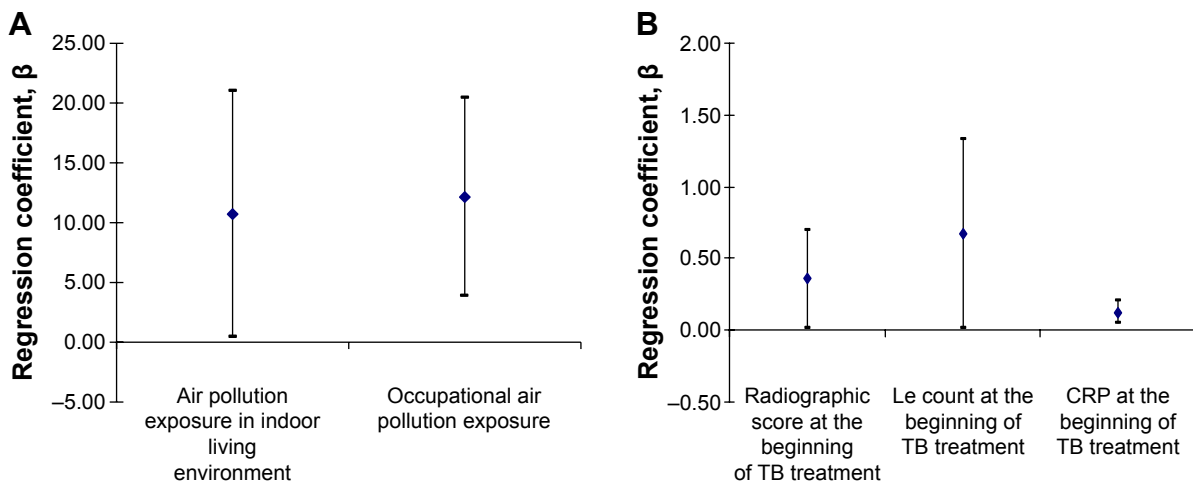


Figure 2 Significant factors of impact on the FEV₁ (%) values upon the TB treatment completion.
Notes: Linear regression analysis; (A) indoor living environment and occupational air pollution exposure impact on the FEV₁ (%); (B), radiographic score, Le count and CRP serum level at the beginning of the TB treatment impact on the FEV₁ (%); Le count, leukocyte count in peripheral blood smear.
Abbreviations: CRP, C-reactive protein; FEV₁, forced expiratory volume in the first second; Le, leukocyte; TB, tuberculosis.

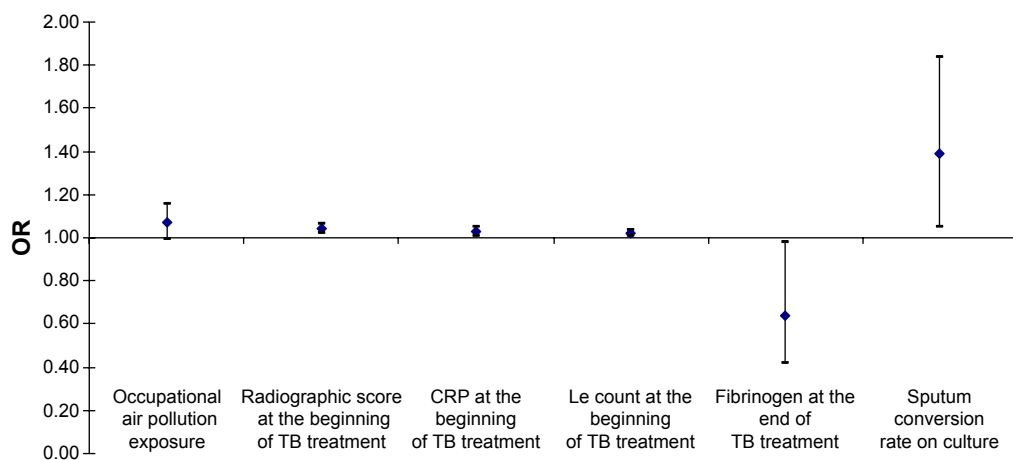


Figure 3 Predictors for the AFO occurrence and development upon the TB treatment completion.
Notes: Univariate logistic regression analysis; Le count, leukocyte count in peripheral blood smear.
Abbreviations: AFO, airflow obstruction; CRP, C-reactive protein; Le, leukocyte; OR, odds ratio; TB, tuberculosis.

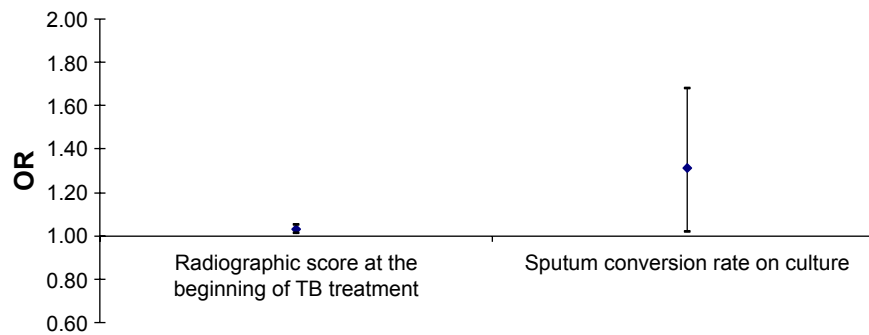


Figure 4 The impact of initial radiological extent of pulmonary TB lesions (Snider's radiological score) at the beginning of TB treatment and sputum conversion rate on culture as major risk factors for the AFO development upon the TB treatment completion.

Note: Multivariate logistic regression analysis.

Abbreviations: AFO, airflow obstruction; OR, odds ratio; TB, tuberculosis.

the high intensity of TB infection in active extensive disease, as well as their decline at the end of TB treatment, due to the effect of DOTS therapy regimen.^{27,30}

In our study, a positive response to bronchodilation test was verified in only 7.7% of patients, while some studies refer a positive test in overall 44%–88% of PTB patients, depending on the initial registered pulmonary ventilation disorder.^{23,31} From the initial restrictive pulmonary ventilation disorder upon the completion of PTB treatment, 37.5% of all observed patients in our study developed AFO and have a strong association between changes in FEV₁ (%) values, resulting in PTB treatment completion, and air pollution exposure in indoor living and working environments, the initial value of radiographic score, Le count, and CRP at baseline level, as well as the sputum conversion rate on culture, representing the most significant risk factors for AFO development. Many authors confirmed the study of strong association between the past history of PTB and the actual presence of AFO.^{4,13,22,26} Estimates of association are further influenced by the presence of powerful confounding factors, such as cigarette smoking, which predisposes to the development of both COPD and TB infections.^{20,31} However, in some of the reported studies, the influence of smoking was avoided by separate analyses in nonsmokers or by excluding smokers.^{13,23,25} In PLATINO and PREPOCOL studies, the association remained after adjusting for smoking and the use of biomass fuel.^{7,24} In our study, the influence of initial radiological extent of pulmonary TB lesions and sputum conversion rate on culture were significant predictive factors for the development of AFO upon TB treatment.^{4,6,27}

The strength of this study is that it was carried out in Nisava District, which is the capital city of Nis (Serbia's third largest city), with similar incidence of TB as on national level. The study included all eligible patients within the district catchment area, minimizing the effect of selection bias.

There were several limitations of this study: first, TB patients who were not detected by the National Health System could not be included, and although this group is a small one, it is also likely to include marginalized groups, such as homeless, foreign refugees, and migrants. Second, a considerable number of enrolled patients after the TB treatment completion were transferred out in the next 3 years, with further longer follow-up information made unavailable, emphasizing on study design and delays in the final analysis of obtained data. Finally, the living conditions, air pollution exposure, and socioeconomic factors considerably vary according to the different district area, especially within the urban, industrial, and rural regions, which could not be evaluated in this study.

Significant findings in this study include a high degree of suspicion of the existence of underlying COPD in severe PTB patients even in the presence of initial restrictive pulmonary ventilation disorder, with the identification of patient significant initial clinical characteristics associated with “adverse pulmonary ventilation outcomes” as an AFO, CAO, or COPD upon the TB treatment completion. These findings suggest several recommendations for improving further medical care and the general welfare among TB patients. Patients with active PTB with clinical characteristics of initial spirometric restrictive respiratory ventilation impairment, male sex, long-term exposure to occupational air pollution, prevalence of extensive radiological extent of pulmonary TB lesions, and slower sputum culture conversion rate should be considered as a high risk for “adverse pulmonary ventilation outcome”, in the form of CAO or COPD, which justifies an increased awareness and care. In these patients, initial spirometry testing has serious limitations and lack of diagnostic accuracy for underlying CAO or COPD. However, for a more accurate evaluation of coexisting COPD, besides the characteristic clinical signs and risk factors of the disease, demographic details

of the PTB patient's specific district, together with occupational and living conditions and environment characteristics, within the regional category, also need to be taken into account.

Conclusion

The clinical syndrome of AFO or CAO among PTB-treated patients is often a common initial manifestation of underlying COPD, which mostly occurs later and appears in the results of our investigation as a consequence and significant functional impairment of the respiratory system, during the reparative processes in active PTB, even in the absence of major risk factors for COPD, such as cigarette smoking and biomass fuel dust exposure. Given the small number of longitudinal studies on this clinical problem, the results of our investigation point to the fact that initial spirometry testing in patients with active PTB is not a sufficient and accurate approach in the detection of underlying COPD, which may lead to their further potential health deterioration.

Author contributions

All authors contributed toward data analysis, drafting and critically revising the paper and agree to be accountable for all aspects of the work.

Disclosure

The authors report no conflicts of interest in this work.

References

- Dheda K, Barry CE 3rd, Maartens G. Tuberculosis. *Lancet*. 2016; 387(10024):1211–1226.
- Chakrabarti B, Calverley PM, Davies PD. Tuberculosis and its incidence, special nature and relationship with chronic obstructive pulmonary disease. *Int J Chron Obstruct Pulmon Dis*. 2007;2(3):263–272.
- Lozano R, Naghavi M, Foreman K, et al. Global and regional mortality from 235 causes of death for 20 age groups in 1990 and 2010: a systematic analysis for the Global Burden of Disease Study 2010. *Lancet*. 2012;380(9859):2095–2128.
- Alwood BW, Myer L, Bateman ED. A systematic review of the association between pulmonary tuberculosis and the development of chronic airflow obstruction in adults. *Respiration*. 2013;86(1):76–85.
- Baig IM, Saeed W, Khalil KF. Post-tuberculous chronic obstructive pulmonary disease. *J Coll Physicians Surg Pak*. 2010;20(8):542–544.
- Pasipanodya JG, Miller TL, Vecino M, et al. Pulmonary impairment after tuberculosis. *Chest*. 2007;131(6):1817–1824.
- Menezes AM, Hallal PC, Perez-Padilla R, et al; Latin American Project for the Investigation of Obstructive Lung Disease (PLATINO) Team. Tuberculosis and airflow obstruction: evidence from the PLATINO study in Latin America. *Eur Respir J*. 2007;30(6):1180–1185.
- Hnizdo E, Singh T, Churchyard G. Chronic pulmonary function impairment caused by initial and recurrent pulmonary tuberculosis following treatment. *Thorax*. 2000;55(1):32–38.
- Ellington PT, Friedland JS. Matrix metalloproteinases in destructive pulmonary pathology. *Thorax*. 2006;61(3):259–266.
- Ong CW, Ellington PT, Friedland JS. Tuberculosis, pulmonary cavitation, and matrix metalloproteinases. *Am J Respir Crit Care Med*. 2014; 190(1):9–18.
- WHO. *An International Roadmap for Tuberculosis Research*. Geneva: World Health Organization; 2011.
- Plit ML, Anderson R, Rensburg CE, et al. Influence of antimicrobial chemotherapy on spirometric parameters and pro-inflammatory indices in severe pulmonary tuberculosis. *Eur Respir J*. 1998;12(2): 351–356.
- Jordan TS, Spencer EM, Davies P. Tuberculosis, bronchiectasis and chronic airflow obstruction. *Respirology*. 2010;15(4):623–628.
- WHO. *Tuberculosis-Treatment Guidelines for National Programs*. Geneva: WHO Regional Office for Europe; 2010:11–20.
- Official Statement of the European Respiratory Society. Standardized lung function testing. *Eur Respir J*. 1993;16:1–100.
- DiFranza JR, Wellman RJ, Savageau JA, Beccia A, Ursprung WW, McMillen R. What aspect of dependence does the Fagerström test for nicotine dependence measure? *ISRN Addict*. 2012;2013:906276.
- Pride NB. Tests of forced expiration and inspiration. In: Hughes JMB, Pride NM, editors. *Lung Function Tests*. London: W.B. Saunders; 2000:3–26.
- Goldman MD, Smith HJ, Ulmer WT. Whole-body plethysmography. In: Gosselink R, Stam H, editors. *Lung Function Testing*. Wakefield: European Respiratory Society Journals Ltd; 2005:15–43.
- Peacock J, Kerry S. Single group studies. In: Peacock J, Kerry S, editors. *Presenting Medical Statistics from Proposal to Publication*. London: Oxford University Press; 2007:45–50.
- Vestbo J, Hurd SS, Agustí AG, et al. Global strategy for the diagnosis, management, and prevention of chronic obstructive pulmonary disease: GOLD executive summary. *American Journal of Respiratory and Critical Care Medicine*. 2013;187(4):347–365.
- Lamprecht B, Mcburnie MA, Vollmer WM, et al; BOLD Collaborative Research Group. COPD in never smokers: results from the population-based burden of obstructive lung disease study. *Chest*. 2011;139(4): 752–763.
- Lee SW, Kim YS, Kim D, Oh Y, Lee S. The risk of obstructive lung disease by previous pulmonary tuberculosis in a country with intermediate burden of tuberculosis. *J Korean Med Sci*. 2011;26(2): 268–273.
- Smelev EI, Kuklina GM, Kalinina EE. Treatment of bronchial obstruction in patients with pulmonary tuberculosis. *Probl Tuberk Bolezn Legk*. 2004;8:57–61.
- Caballero A, Torres-Duque CA, Jaramillo C, et al. Prevalence of COPD in five Colombian cities situated at low, medium, and high altitude (PREPOCOL Study). *Chest*. 2008;133(2):343–349.
- Lam KB, Jiang CQ, Jordan RE, et al. Prior TB, smoking, and airflow obstruction: a cross-sectional analysis of the Guangzhou Biobank cohort study. *Chest*. 2010;137(3):593–600.
- Radovic M, Ristic L, Stankovic I, et al. Chronic airflow obstruction syndrome due to pulmonary tuberculosis treated with directly observed therapy – serious changes in lung function. *Med Arh*. 2011;65(5): 265–269.
- Ko Y, Lee YM, Lee HY, et al. Changes in lung function according to disease extent before and after pulmonary tuberculosis. *Int J Tuberc Lung Dis*. 2015;19(5):589–595.
- Kolappan C, Gopi PG. Tobacco smoking and pulmonary tuberculosis. *Thorax*. 2002;57(11):964–966.
- Den Boon S, Van Lill SW, Borgdorff MW, et al. Association between smoking and tuberculosis infection: a population survey in a high tuberculosis incidence area. *Thorax*. 2005;60(7):555–557.
- Lee JH, Chang JH. Lung function in patients with chronic airflow obstruction due to tuberculosis destroyed lung. *Respir Med*. 2003;97(11): 1237–1242.
- Van Zyl Smith RN, Pai M, Yew WW, et al. Global lung health: the colliding epidemics of tuberculosis, tobacco smoking, HIV and COPD. *Eur Respir J*. 2010;35(1):27–33.

International Journal of COPD

Dovepress

Publish your work in this journal

The International Journal of COPD is an international, peer-reviewed journal of therapeutics and pharmacology focusing on concise rapid reporting of clinical studies and reviews in COPD. Special focus is given to the pathophysiological processes underlying the disease, intervention programs, patient focused education, and self management protocols.

This journal is indexed on PubMed Central, MedLine and CAS. The manuscript management system is completely online and includes a very quick and fair peer-review system, which is all easy to use. Visit <http://www.dovepress.com/testimonials.php> to read real quotes from published authors.

Submit your manuscript here: <http://www.dovepress.com/international-journal-of-chronic-obstructive-pulmonary-disease-journal>