

Response of patients with locally advanced pancreatic adenocarcinoma to high-intensity focused ultrasound treatment: a single-center, prospective, case series in China

Yongshuo Ji¹
 Yu Zhang¹
 Junqiu Zhu¹
 Linglin Zhu¹
 Yanfei Zhu¹
 Kaimeng Hu²
 Hong Zhao¹

¹HIFU Center of Oncology
 Department, Huadong Hospital
 Affiliated to Fudan University,
 Shanghai 200000, China;

²Marketing Department, Shanghai
 A&S Science Technology
 Development Co., Ltd, Shanghai
 200000, China

Purpose: Patients with unresectable locally advanced pancreatic cancer (LAPC) are still in dire need of effective therapies. We performed this cohort study in order to assess the efficacy and safety of high-intensity focused ultrasound (HIFU) ablation in treating patients with unresectable LAPC.

Patients and methods: Eighty-seven cases with unresectable LAPC from January 2014 to December 2016 were finally recruited according to the inclusion criteria. The primary end point of our study was OS of all the cases, and the secondary end points included 6-month and 12-month survival rate, tumor response rate, carbohydrate antigen (CA) 19-9 response rate, VAS, quality of life, and safety.

Results: All the 87 patients received HIFU ablation successfully, and were included in the efficacy and safety analysis. With a median follow-up of 16 months, median OS was estimated to be 12.2 months, with 95% CI of 11.1–12.7 months. The 6-month and 12-month survival rates were 94.25% (95% CI =86.74–97.57) and 50.85% (95% CI =38.17–62.21), respectively. Multivariate analysis revealed that patients with VAS <4, Karnofsky performance status ≥80, and tumor size <3 cm have a significant improvement in their OS (adjusted HR [aHR] =0.26 [95% CI =0.12–0.57], $P=0.001$; aHR =0.34 [95% CI =0.17–0.68], $P=0.02$; and aHR =0.39 [95% CI =0.20–0.78], $P=0.007$; respectively). Tumor responses were observed in 32 (36.8%) of 87 patients and CA 19-9 response rate was 56.2%. Global health status, physical function, emotional function, and cognitive function of patients were significantly improved after HIFU treatment, and symptoms of fatigue and pain were significantly reduced. A total of 28.7% (25/87) of patients reported adverse events (AEs), mainly including fatigue (14/87), abdominal pain (7/87), fever (7/87), nausea (5/87), and rash (4/87). No severe AEs and HIFU-related deaths were reported.

Conclusion: HIFU ablation might be a potentially effective and safe therapeutic option for the patients with unresectable LAPC.

Keywords: HIFU, locally advanced pancreatic cancer, unresectable, survival, response, quality of life

Introduction

Pancreatic cancer is one of the most commonly diagnosed aggressive malignancies worldwide, with poor long-term prognosis.^{1,2} Patients with pancreatic carcinoma are often in the advanced stage and unresectable at the time of diagnosis, due to the difficulties in early diagnosis. Few of treatment options would be feasible for them. The latest report shows that pancreatic adenocarcinoma is the third cause of cancer-induced

Correspondence: Hong Zhao
 HIFU Center of Oncology Department,
 Huadong Hospital Affiliated to Fudan
 University, No. 139, West Yan'an Road,
 Jing'an District, Shanghai 200000, China
 Email hongzhhdyy@163.com

death worldwide, with a 5-year OS rate of 8%, while the survival is relatively better in the localized cases with the rate of 32%.¹ These patients with unresectable tumor lesions located in the celiac axis and the superior mesenteric artery without evidence of distant metastasis are defined as locally advanced pancreatic cancer (LAPC). Patients with LAPC account for ~30% of all the cases of pancreatic carcinoma,³ with a median survival time of less than 10 months.⁴

The front-line therapeutic options for LAPC patients are chemotherapy and radiotherapy, by which survival benefit is limited, and complications and adverse events (AEs) are frequent. Although some newer chemotherapy regimens like gemcitabine plus nab-paclitaxel,⁵ dasatinib plus gemcitabine,⁶ FOLFOX-6^{7,8} and FOLFIRINOX⁹⁻¹¹ appear and have shown a substantial survival benefit in patients with LAPC, the long-term prognosis is still poor and the heterogeneity between these studies is significant.¹² Therefore, an optimal treatment for LAPC patients should provide survival benefit, alleviate pain, improve quality of life, but not cause severe complications.

High-intensity focused ultrasound (HIFU) is an emerging noninvasive ablation procedure which can ablate various solid tumors including LAPC. It can focus ultrasound energy on the target lesions and induce tumor coagulation necrosis by thermal effect.¹³ Several clinical trials of HIFU palliative therapy for pancreatic carcinoma cases have provided promising results.^{14,15} HIFU monotherapy¹⁶⁻²¹ or in combination with systemic chemotherapy^{22,23} has been proved to be able to relieve pain and might bring an additional survival benefit with rare severe AEs.

However, the efficacy of HIFU treatment remains to be confirmed by more research and clinical practice. This single-center, prospective, case series was performed to assess the clinical benefit and safety of HIFU treatment for LAPC cases.

Patients and methods

Patients

From January 2014 to December 2016, cytologically or pathologically confirmed unresectable LAPC patients were eligible for treatment in our center. The inclusion criteria were as follows: patients with age ≥ 18 years; patients with adequate hepatic, renal, and bone marrow function (white blood cell $\geq 3.9 \times 10^9/L$, absolute neutrophil count $\geq 1.5 \times 10^9/L$, platelets $\geq 100 \times 10^9/L$, hemoglobin ≥ 10 g/dL, and serum creatinine ≤ 150 mmol/L); and patients with an Eastern Cooperative Oncology Group performance status (ECOG PS) of 1. In addition, some cases should be excluded including

pregnancy, lactation, metabolic disease, prior cerebrovascular event, active second malignancy, and uncontrolled intermittent illness.

Each patient signed a document of informed consent before enrollment. The research obtained the approval of the ethics committee of Huadong Hospital affiliated to Fudan University and was done according to the Declaration of Helsinki.

Procedures

HIFU was performed using HIFUINTE-9000 system (Shanghai A&S Sci-Tec Co., Ltd, Shanghai, China), which is a US-guided device.²² Firstly, tumor location, size, and the morphological characteristics are identified by b-mode sonography, CT, or MRI; in the meantime, the influence of tumor on adjacent organs and blood vessels is also evaluated. Next, the detecting head of this system will complete the re-localization of the therapy area. Finally, the ablation energy focus is controlled to move sequentially along the three-dimensional axis until the target lesion is totally covered. The main HIFU parameters of treatment in this study were the following: input power, 5–10 kW/cm²; therapy depth, 2–15 cm; practice-focused sphere, $3 \times 3 \times 8$ mm³; unit transmit time (t1) : intermission time (t2) =1:2; and HIFU times at each lesion, 8–10 times. All of the parameters can be varied depending on the depth of the tumor.

Observation and measurement

The primary outcome of this single-center, prospective cohort study was OS of patients. The secondary end points were 6- and 12-month survival rates, tumor response rate, carbohydrate antigen (CA) 19-9 response rate, VAS, quality of life, and safety. The evaluation of tumors was conducted by a CT or MRI scan before HIFU ablation, and at 1, 3, 6, and 12 months post-HIFU treatment. The response was determined according to the Response Evaluation Criteria in Solid Tumors (RECIST v1.1).²⁴ Serum levels of tumor biomarker CA 19-9 were measured before HIFU ablation and within 1 week after HIFU treatment, and CA 19-9 response was defined as $>50\%$ decline from baseline value. VAS pain scores and quality of life scores were also recorded and assessed before HIFU ablation, and at 1, 3, 6, and 12 months post-HIFU treatment. The European Organization for the Research and Treatment of Cancer Quality of Life Questionnaire-core 30 (EORTC-QLQ-C30) was adopted to evaluate the quality of life of patients. AEs were recorded, and the severity was graded in accordance with the Common Terminology Criteria for Adverse Events, version 4.²⁵

Statistical analyses

OS analysis of patients was conducted by the Kaplan–Meier method. To obtain more detailed descriptions of the survival, stratified analyses by the characteristics of cases were also performed. Potential clinicopathological factors influencing the OS rates were evaluated by log-rank test (univariate analysis) and then by Cox proportional hazards model (multivariate analysis). All the data analyses were performed by Stata 12.0 software (StataCorp LP, College Station, TX, USA). A *P*-value <0.05 indicated statistical significance.

Results

Patient baseline characteristics

In total, 87 patients were enrolled in this study. The cases included 41 males and 36 females, with a median age of 68 years (range: 38–80 years). Median Karnofsky performance status (KPS) was 80; 58 cases had a KPS score ≥80 and 29 cases <80. The median VAS prior to HIFU was 3 (range: 0–8); 70.1% of the cases had a VAS ≥4. The mean of maximum diameter was estimated to be 3.7 cm (range: 1.7–6.9 cm); 41 cases had a mean diameter ≥3 cm and 46 cases <3 cm. A majority (91%) of the tumors were located in the head and body of the pancreas. Many patients received other therapies before enrollment, including chemotherapy (26), radiotherapy (6), and surgery (12), however, some of them did not achieve remission, and others had relapsed in the short term. Details of the baseline characteristics of patients and tumors are described in Table 1.

OS and 6- and 12-month survival rate and the risk factors of OS

Median OS was estimated to be 12.2 months, with 95% CI of 11.1–12.7 months. The 6-month and 12-month survival was 94.25% (95% CI =86.74–97.57) and 50.85% (95% CI =38.17–62.21), respectively. The risk factors of survival were analyzed with a Cox proportional hazards model, which suggested that cases with VAS <4, KPS ≥80, and tumor size <3 cm have a significant improvement in the OS (HR =0.26 [95% CI =0.12–0.57], *P*=0.001; HR =0.34 [95% CI =0.17–0.68], *P*=0.02; and HR=0.39 [95% CI =0.20–0.78], *P*=0.007; respectively) after adjusting for age, VAS, KPS, and tumor size (Table 2 and Figure 1).

Clinical response and CA 19-9 response

Among 87 patients administrated with HIFU ablation, complete response (CR), partial response (PR), stable disease (SD), and progression disease (PD) were observed in 7, 25,

Table 1 Patient baseline characteristics

Characteristics		No of patients (%/range)
Gender	Male	41 (47.1%)
	Female	46 (52.9%)
Age (years) ^a	Median (range)	68 (38–80)
	≥70	34 (39.1%)
	<70	53 (60.9%)
BMI (kg/m ²)	Median (range)	22.6 (16.5–29.3)
	<18.5	34 (39.1%)
	18.5–24	39 (44.8%)
	>24	14 (16.1%)
KPS ^a	Median (range)	80 (60–100)
	≥80	58 (66.7%)
	<80	29 (33.3%)
VAS ^a	Median (range)	3 (0–8)
	≥4	61 (70.1%)
	<4	26 (29.9%)
Tumor location	Head	52 (59.8%)
	Body	29 (33.3%)
	Tail	6 (6.9%)
Prior treatment	Chemotherapy	26 (29.9%)
	Radiotherapy	6 (6.9%)
	Surgery	12 (13.8%)
	None	31 (35.6%)
Tumor size (cm)	Median (range)	3.7 (1.7–6.9)
	≥3	41 (47.1%)
	<3	46 (52.9%)
CA 19-9 (U/mL)	Median (range)	3,779 (0–23,790)
	Positive	77 (88.5%)
	Negative	10 (11.5%)

Notes: ^aData are median (range); n (%).

Abbreviations: BMI, body mass index; CA, carbohydrate antigen; KPS, Karnofsky performance status.

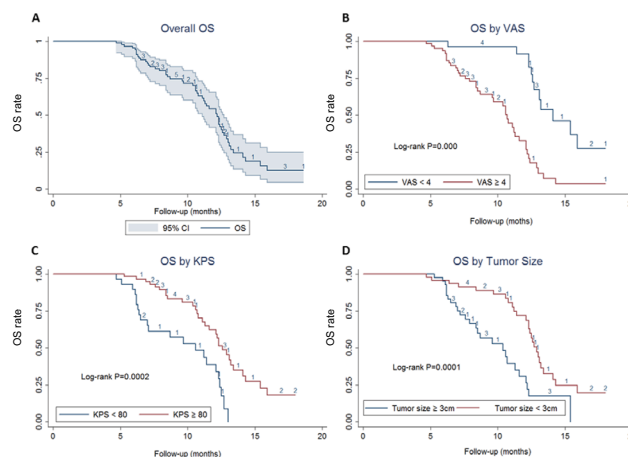


Figure 1 The Kaplan–Meier survival curve of all the 87 patients.

Notes: (A) Overall analysis, (B) stratified analysis by VAS, (C) stratified analysis by KPS, and (D) stratified analysis by tumor size.

Abbreviation: KPS, Karnofsky performance status.

36, and 19 patients, respectively. Objective response rate (ORR, CR+ PR) was found to be 36.8% (32/87). Disease control rate (CR+ PR+ SD) was observed to be 78.2% (68/87) (Table 3 and Figure 2).

Table 2 Patients' OS and the risk factor analysis of OS

Characteristics		Median OS (95% CI)	6-month OS (95% CI)	12-month OS (95% CI)	Log-rank P-value	aHR (95% CI) ^a	Cox P-value
Overall		12.2 (11.1–12.7)	94.25 (86.74–97.57)	50.85 (38.17–62.21)			
Gender	Male	12.3 (8.4–13.4)	92.68 (79.00–97.58)	53.52 (35.78–68.38)	0.736		
	Female	12.1 (10.8–12.5)	93.48 (81.13–97.85)	46.90 (28.71–63.17)			
Age (years)	≥70	11.1 (8.4–12.3)	88.24 (71.63–95.41)	31.35 (12.70–52.10)	0.0015	1.79 (0.88–3.65)	0.107
	<70	12.5 (11.3–14.1)	96.23 (85.74–99.04)	60.32 (44.26–73.09)			
BMI (kg/m ²)	<18.5	10.6 (7.6–12.5)	85.29 (68.21–93.60)	36.90 (16.96–57.10)	0.0147		
	18.5–24	12.1 (12.1–13.4)	100 (100–100)	67.13 (48.50–80.29)			
	>24	11.2 (6.2–16.7)	85.71 (53.94–96.22)	31.75 (5.56–63.41)			
Location	Head	11.2 (9.7–12.7)	90.38 (78.43–95.88)	46.82 (30.22–61.80)	0.784		
	Body	12.3 (10.8–13.4)	89.66 (71.26–96.54)	45.93 (24.75–64.82)			
	Tail	13.0 (12.1–17.6)	100 (100–100)	80.00 (20.38–96.92)			
VAS	≥4	10.7 (8.7–11.6)	90.18 (81.42–96.50)	26.66 (13.78–41.41)	0.0000	3.90 (1.76–8.62)	0.001
	<4	14.1 (12.6–18.0)	96.15 (75.69–99.45)	82.42 (59.53–90.34)			
KPS	≥80	12.6 (11.3–14.1)	96.55 (86.91–99.13)	59.50 (43.02–72.76)	0.0002	0.34 (0.17–0.68)	0.02
	<80	10.6 (6.5–12.3)	86.12 (67.31–94.59)	33.89 (16.05–52.73)			
Tumor size (cm)	≥3	10.4 (7.9–11.6)	92.68 (79.00–97.58)	26.32 (11.35–44.08)	0.0001	2.56 (1.28–5.01)	0.007
	<3	12.9 (12.3–13.4)	93.48 (81.13–97.85)	68.74 (51.14–81.09)			
Prior treatment	Chemotherapy	12.1 (7.0–12.4)	96.15 (80.52–99.27)	49.26 (31.19–79.07)	0.069		
	Radiotherapy	14.4 (8.4–17.6)	100 (100–100)	66.67 (23.08–88.36)			
	Surgery	11.3 (5.9–12.4)	91.30 (76.49–99.47)	53.97 (33.11–70.88)			
	None	12.3 (10.4–12.7)	93.61 (79.17–99.46)	51.51 (29.69–69.57)			

Note: ^aAdjusted by age, VAS, KPS, and tumor size.

Abbreviations: aHR, adjusted HR; BMI, body mass index; Karnofsky performance status.

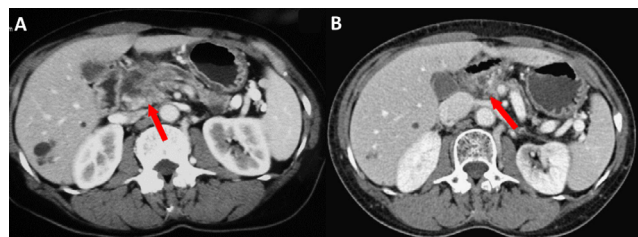


Figure 2 CT scans of a 63-year-old male patient with LAPC who received HIFU treatment.

Notes: (A) Before treatment, pancreatic cancer invaded local blood vessels. An irregular low-density mass with 2.6×3.0 cm could be seen in the head of the pancreas. The boundaries between the lesion and the hepatic artery, superior mesenteric vein, and the proximal end of the splenic vein were unclear, and the pancreatic duct was dilated. (B) One year after HIFU treatment, the pancreas atrophied, a small amount of pancreatic tissue was seen on the head of the pancreas, no obvious space-occupying lesions were seen, the gap of peripancreatic fat was clear, and there was no sign of pressure on the surrounding blood vessels.

Abbreviations: HIFU, high-intensity focused ultrasound; LAPC, locally advanced pancreatic cancer.

Results obtained for tumor biomarker CA 19-9 are also presented in Table 3. Patients achieved a CA 19-9 response at a median of 1 month (0.8–1.6). The mean nadir decrease from baseline was 4,077 U/mL. Nearly one-third of patients receiving HIFU treatment had a decrease exceeding 90% from the baseline level, and more than 50% of patients had a decrease exceeding 50% (Table 3).

VAS pain score

The mean VAS pain assessment score was 4.62 (±SD 2.07) at baseline, and was 3.20 (±SD 1.21), 3.18 (±SD 1.02), 3.36

Table 3 Maximum RECIST response, CA 19-9 response

Response		No of patients	%/range
RECIST best tumor response	Overall response rate (CR + PR)	32	36.8
	CR	7	8.0
	PR	25	28.7
	SD	36	41.4
CA 19-9 parameters ^a	DCR (CR + PR+ SD)	68	78.2
	Nadir change, U/mL; Mean (range)	–4,077	–43,065–18,845
	Decrease		
	>20%	66	75.8
	>50%	49	56.2
	>90%	27	31.0
	Time to response, months	1	0.8–1.6

Note: ^aBased on patients with baseline assessment above the upper limit of normal and at least one post-baseline CA 19-9 assessment.

Abbreviations: CA, carbohydrate antigen; CR, complete response; DCR, disease control rate; PR, partial response; RECIST, Response Evaluation Criteria in Solid Tumors; SD, stable disease.

(±SD 1.24), and 3.79 (±SD 1.36) at 1, 3, 6, and 12 months after HIFU ablation, respectively. As shown in Figure 3, a significant decrease from baseline levels (*P*<0.05) was observed at 1, 3, and 6 months post-HIFU therapy.

Quality of life

Function scores, global health scores, and symptom scores were converted into the centesimal system from 0 to 100. A

higher score in both function and global health scales post-conversion indicated an increased ability of patients to do daily activities. Meanwhile, high scores of symptom scales indicated suffering of the patients. The results are shown in Figure 4. Global health status, physical function, emotional function, and cognitive function of patients were significantly ($P<0.05$) improved after HIFU treatment. Symptom scales revealed that fatigue and pain were significantly ($P<0.05$) reduced after HIFU therapy.

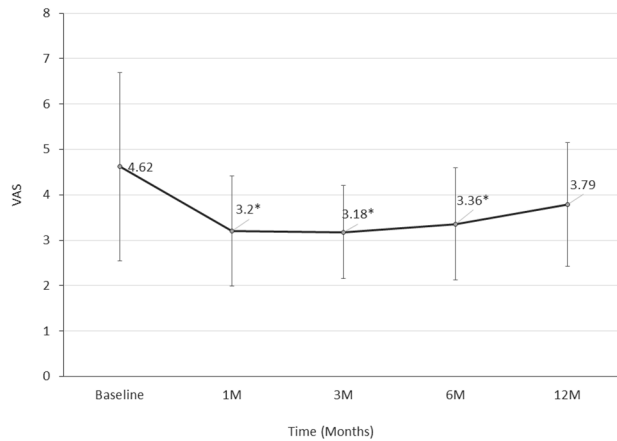


Figure 3 The VAS of patients at baseline and 1, 3, 6, and 12 months after HIFU treatment. * $p<0.05$ compared with Baseline.

Abbreviation: HIFU, high-intensity focused ultrasound.

Safety

All the reported AEs are listed in Table 4. Fatigue (14/87, 16.1%) is the most common AE, followed by abdominal pain (7/87, 8%), fever (7/87, 8%), nausea (5/87, 5.7%), and rash (4/87, 4.6%). Besides, elevated C-reactive protein levels, leucopenia and a subcutaneous nodule were reported by each of the two patients. It is worth mentioning that no patient complained of skin burns in our study. No cases of acute pancreatitis or peritonitis were observed during the follow-up period post-HIFU treatment. Moreover, no case withdrew from this research because of the side effects and no treatment-induced death was observed.

Table 4 Most frequent AEs (regardless of relationship to HIFU treatment)

AEs	No of patients	%
Fatigue	14	16.1
Abdominal pain	7	8.0
Fever	7	8.0
Nausea	5	5.7
Rash	4	4.6
Elevated CRP	2	2.3
Leucopenia	2	2.3
Subcutaneous nodule	2	2.3
Total	25	28.7

Abbreviations: AE, adverse event; CRP, C-reactive protein; HIFU, high-intensity focused ultrasound.

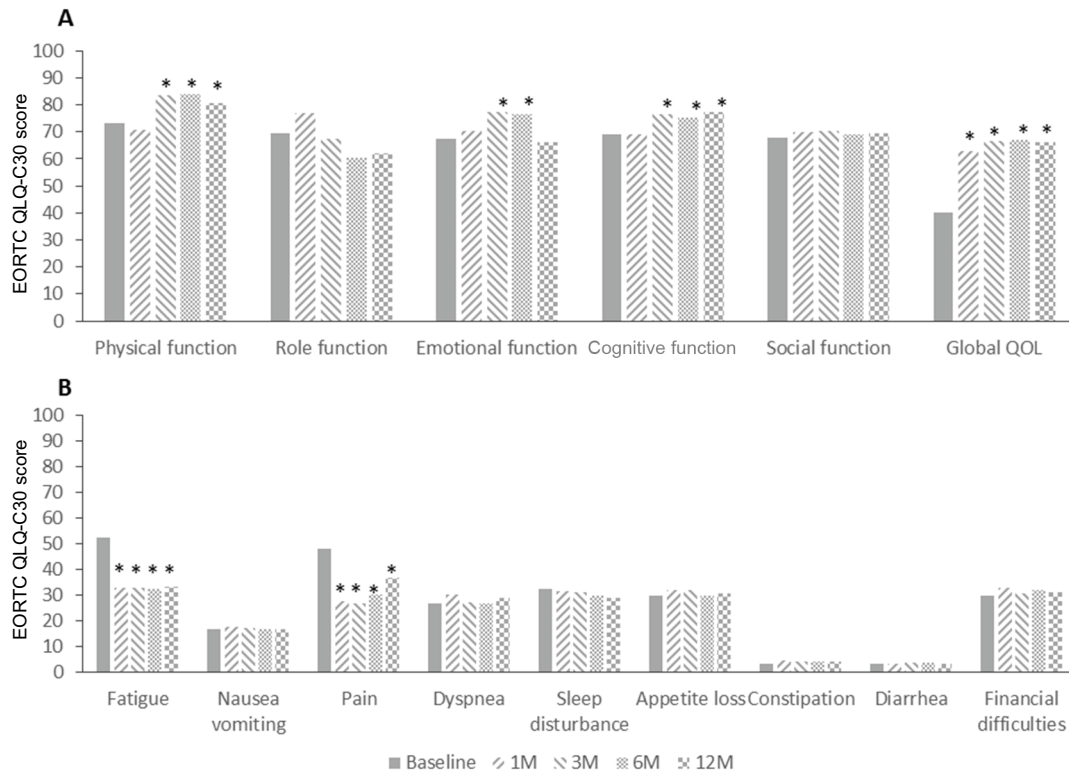


Figure 4 QOL of patients was evaluated by EORTC QLQ-C30 questionnaire.

Notes: High levels of global health and function scales (A) indicated a higher ability, and high scores of symptom-scales (B) indicated suffering of the patients. * $p<0.05$ compared with Baseline.

Abbreviations: EORTC QLQ-C30, European Organization for the Research and Treatment of Cancer Quality of Life Questionnaire-core 30; M, months; QOL, quality of life.

Discussion

Patients with unresectable LAPC are still in dire need of effective therapies, because of the limited efficacy of current therapeutic options. These treatments should improve patients' symptoms, relieve pain, and improve quality of life, rather than just achieving sufficient local tumor control. In this regard, HIFU ablation might be one of the appropriate therapies for patients with LAPC. During HIFU treatment, ultrasonic energy is focused on the target lesions, resulting in coagulative necrosis of lesions by thermal and cavitation effects.^{26,27} Moreover, HIFU treatment is reported to have the ability to enhance tumor immunity of patients.^{28–30}

HIFU ablation is an emerging therapy with encouraging clinical results. As reported by numerous studies, it could be applied in patients with advanced pancreatic carcinoma safely and effectively.^{19,31,32} In clinical practice, HIFU combined with chemotherapy is preferred, but not HIFU alone. However, in the present study, the patients did not receive chemotherapy. They refused chemotherapy either because of AEs or medical expenses associated with chemotherapy or fear of relapse following chemotherapy. Zhou¹⁴ over-viewed 241 articles with a total of 653 cases on the HIFU monotherapy for LAPC and revealed that median OS was 10 months and pooled pain remission rate was 71.3% (Table 5). The AEs associated with HIFU treatment were rare and tolerable, especially for patients of older age and with poor ECOG PS. Therefore, HIFU ablation could be considered as an optimal treatment for elderly cases and for those with low ECOG PS, who are unavailable for chemotherapy or radiotherapy.

In our subjects, the median OS was found to be 12.2 months, with 95% CI of 11.1–12.7 months. As a golden standard treatment for LAPC, patients undergoing first-line treatment with gemcitabine were reported to have a median OS of 5.6–9.2 months in numerous high-quality randomized controlled trials.^{33–39} HIFU treatment might prolong the survival of patients to a greater extent, when compared with gemcitabine monotherapy. The 6-month and 12-month OS rates of 94.25% and 50.85%, respectively, in this study are comparable to the rates obtained with chemotherapy and radiotherapy in LAPC.^{23,40} In a study by Zhao et al⁴¹ in 2017, the 6-month OS was found to be 44.4%–100% and 12-month OS was 11.1%–35.4% after HIFU treatment, which is numerically inferior to our results. Some factors such as sample size, statistical power, and baseline value might have contributed to this difference.

In terms of the AEs, during and after HIFU therapy, no serious adverse reactions were observed in this study. The treatment-related complication, as well as treatment cycle, was significantly reduced compared with chemotherapy or radiotherapy.^{42,43} However, recent reports have reported certain HIFU-related complications, especially skin burns, but our results did not show any evidence of complications due to skin burn. This can be attributed to the differences in the type of HIFU equipment used for treatment. HIFUNIT-9000 system used in this study adopts dual focus mode, and the energy upon the skin could be reduced effectively during operation compared with other equipment.

Several limitations of this study should be acknowledged. First, our results came from a single-center, non-blinded

Table 5 Summary of recent studies of HIFU monotherapy for advanced pancreatic cancer

Study	Pts	Characteristics of pts	Pain relief (%)	ORR (%)	MST (months)	6-month OS	12-month OS	24-month OS
Zhao et al 2017 ⁴¹	38	Unresectable, locally advanced; tumor size unclear	–	–	10.8	100%	36.40%	–
Marinova et al 2018 ⁴⁴	50	Unresectable, advanced; tumor size unclear	84%	–	16.2	–	–	–
Wang et al 2011 ¹⁸	40	Unresectable, advanced; tumor size 4.3 cm	87.50%	–	8	58.80%	30.10%	–
Sung et al 2011 ¹⁹	46	Unresectable, advanced; tumor size 4.2 cm	–	77.50%	12.4	52.20%	30.40%	–
Xiong et al 2009 ⁴⁵	89	Unresectable; tumor size unclear	80%	14.60%	11.2 for stage III 5.4 for stage IV	41.0% 6.5%	–	10.3% 0%
Li et al 2012 ⁴⁶	25	Unresectable, advanced; tumor size unclear	92%	–	10	–	42%	–
Zhou 2014 ^{14a}	653	Unresectable, advanced; tumor size unclear	71%	CR: 29.66% PR: 39.83%	10.03	–	–	–

Note: ^aThis article was a review of HIFU for advanced pancreatic cancer.

Abbreviations: CR, complete response; HIFU, high-intensity focused ultrasound; MST, median survival time; ORR, objective response rate; PR, partial response; pts, patients HIFU, high-intensity focused.

observation study, which would not provide the highest quality evidence of clinical practice. Second, our sample size is relatively small, and the follow-up period is relatively short. Therefore, top-level designed trials with a larger sample size are needed. Nevertheless, our investigation has provided a reliable clinical evidence for the new direction of LAPC ablation treatment.

Conclusion

Our results further confirmed the efficacy and safety of HIFU treatment for patients with LAPC. HIFU might be one of the optimal therapies for LAPC. However, further well-designed double-blind, randomized controlled trials are warranted to evaluate the clinical efficacy of HIFU ablation, especially in combination with chemotherapy or radiotherapy.

Acknowledgment

The authors are grateful to all the staff at the study center who contributed to this study.

Author contributions

Design of the study: Hong Zhao and Kaimeng Hu. Data management and analyses: Yongshuo Ji, Junqiu Zhu, and Yanfei Zhu. Writing and revising the manuscript: Yu Zhang and Linglin Zhu. All authors contributed toward data analysis, drafting and critically revising the paper and agree to be accountable for all aspects of the work.

Disclosure

The authors report no conflicts of interest in this work.

References

- Siegel RL, Miller KD, Jemal A. Cancer statistics, 2018. *CA Cancer J Clin.* 2018;68(1):7–30.
- Chen W, Zheng R, Baade PD, et al. Cancer statistics in China, 2015. *CA Cancer J Clin.* 2016;66(2):115–132.
- Heestand GM, Murphy JD, Lowy AM. Approach to patients with pancreatic cancer without detectable metastases. *J Clin Oncol.* 2015;33(16):1770–1778.
- Hsueh CT. Pancreatic cancer: current standards, research updates and future directions. *J Gastrointest Oncol.* 2011;2(3):123–125.
- Yamada S, Fujii T, Yokoyama Y, et al. Phase I study of chemoradiotherapy using gemcitabine plus nab-paclitaxel for unresectable locally advanced pancreatic cancer. *Cancer Chemother Pharmacol.* 2018;81(5):815–821.
- Evans TRJ, Van Cutsem E, Moore MJ, et al. Phase 2 placebo-controlled, double-blind trial of dasatinib added to gemcitabine for patients with locally-advanced pancreatic cancer. *Ann Oncol.* 2017;28(2):354–361.
- Ghosh M, Farhat F, Kattan J, et al. FOLFIRINOX combination as the first-line treatment of locally advanced and/or metastatic pancreatic cancer. *Am J Clin Oncol.* 2007;30(1):15–20.
- Ghosh M, Saroufim A, Kattan J, Chahine G, Nasr F, Farhat F. Sequential FOLFIRINOX and gemcitabine for locally advanced and/or metastatic pancreatic cancer. *Med Oncol.* 2012;29(4):2831–2837.
- Lakatos G, Petranyi A, Szücs A, et al. Efficacy and Safety of FOLFIRINOX in Locally Advanced Pancreatic Cancer. A Single Center Experience. *Pathol Oncol Res.* 2017;23(4):753–759.
- Suker M, Beumer BR, Sadot E, et al. FOLFIRINOX for locally advanced pancreatic cancer: a systematic review and patient-level meta-analysis. *Lancet Oncol.* 2016;17(6):801–810.
- Nywenning TM, Wang-Gillam A, Sanford DE, et al. Targeting tumour-associated macrophages with CCR2 inhibition in combination with FOLFIRINOX in patients with borderline resectable and locally advanced pancreatic cancer: a single-centre, open-label, dose-finding, non-randomised, phase 1b trial. *Lancet Oncol.* 2016;17(5):651–662.
- Sultana A, Smith CT, Cunningham D, Starling N, Neoptolemos JP, Ghaneh P. Meta-analyses of chemotherapy for locally advanced and metastatic pancreatic cancer. *J Clin Oncol.* 2007;25(18):2607–2615.
- Orsi F, Arnone P, Chen W, Zhang L. High intensity focused ultrasound ablation: a new therapeutic option for solid tumors. *J Cancer Res Ther.* 2010;6(4):414–420.
- Zhou Y. High-intensity focused ultrasound treatment for advanced pancreatic cancer. *Gastroenterol Res Pract.* 2014:205–325.
- Wu F. High intensity focused ultrasound: a noninvasive therapy for locally advanced pancreatic cancer. *World J Gastroenterol.* 2014;20(44):16480–16488.
- Orsi F, Zhang L, Arnone P, et al. High-intensity focused ultrasound ablation: effective and safe therapy for solid tumors in difficult locations. *AJR Am J Roentgenol.* 2010;195(3):W245–W252.
- Wu F, Wang ZB, Zhu H, et al. Feasibility of US-guided high-intensity focused ultrasound treatment in patients with advanced pancreatic cancer: initial experience. *Radiology.* 2005;236(3):1034–1040.
- Wang K, Chen Z, Meng Z, et al. Analgesic effect of high intensity focused ultrasound therapy for unresectable pancreatic cancer. *Int J Hyperthermia.* 2011;27(2):101–107.
- Sung HY, Jung SE, Cho SH, et al. Long-term outcome of high-intensity focused ultrasound in advanced pancreatic cancer. *Pancreas.* 2011;40(7):1080–1086.
- Wang K, Zhu H, Meng Z, et al. Safety evaluation of high-intensity focused ultrasound in patients with pancreatic cancer. *Onkologie.* 2013;36(3):88–92.
- Gao HF, Wang K, Meng ZQ, et al. High intensity focused ultrasound treatment for patients with local advanced pancreatic cancer. *Hepato-gastroenterology.* 2013;60(128):1906–1910.
- Zhao H, Yang G, Wang D, et al. Concurrent gemcitabine and high-intensity focused ultrasound therapy in patients with locally advanced pancreatic cancer. *Anticancer Drugs.* 2010;21(4):447–452.
- Li YJ, Huang GL, Sun XL, Zhao XC, Li ZG. The combination therapy of high-intensity focused ultrasound with radiotherapy in locally advanced pancreatic carcinoma. *World J Surg Oncol.* 2016;14:60.
- Therasse P, Arbuck SG, Eisenhauer EA, et al. New guidelines to evaluate the response to treatment in solid tumors. European Organization for Research and Treatment of Cancer, National Cancer Institute of the United States, National Cancer Institute of Canada. *J Natl Cancer Inst.* 2000;92(3):205–216.
- Liu YJ, Zhu GP, Guan XY. Comparison of the NCI-CTCAE version 4.0 and version 3.0 in assessing chemoradiation-induced oral mucositis for locally advanced nasopharyngeal carcinoma. *Oral Oncol.* 2012;48(6):554–559.
- Sofuni A, Moriyasu F, Sano T, et al. The current potential of high-intensity focused ultrasound for pancreatic carcinoma. *J Hepatobiliary Pancreat Sci.* 2011;18(3):295–303.
- Hwang JH, Wang YN, Warren C, et al. Preclinical in vivo evaluation of an extracorporeal HIFU device for ablation of pancreatic tumors. *Ultrasound Med Biol.* 2009;35(6):967–975.
- Wu F, Zhou L, Chen WR. Host antitumour immune responses to HIFU ablation. *Int J Hyperthermia.* 2007;23(2):165–171.
- Liu F, Hu Z, Qiu L, et al. Boosting high-intensity focused ultrasound-induced anti-tumor immunity using a sparse-scan strategy that can more effectively promote dendritic cell maturation. *J Transl Med.* 2010;8:7.
- Ran LF, Xie XP, Xia JZ, Xie FL, Fan YM, Wu F. Specific antitumor immunity of HIFU-activated cytotoxic T lymphocytes after adoptive trans-fusion in tumour-bearing mice. *Int J Hyperthermia.* 2016;32(2):204–210.

31. Vidal-Jove J, Perich E, Del Castillo MA. Ultrasound Guided High Intensity Focused Ultrasound for malignant tumors: The Spanish experience of survival advantage in stage III and IV pancreatic cancer. *Ultrason Sonochem*. 2015;27:703–706.
32. Ge HY, Miao LY, Xiong LL, et al. High-intensity focused ultrasound treatment of late-stage pancreatic body carcinoma: optimal tumor depth for safe ablation. *Ultrason Med Biol*. 2014;40(5):947–955.
33. Spano JP, Chodkiewicz C, Maurel J, et al. Efficacy of gemcitabine plus axitinib compared with gemcitabine alone in patients with advanced pancreatic cancer: an open-label randomised phase II study. *Lancet*. 2008;371(9630):2101–2108.
34. Borad MJ, Reddy SG, Bahary N, et al. Randomized Phase II Trial of Gemcitabine Plus TH-302 Versus Gemcitabine in Patients With Advanced Pancreatic Cancer. *J Clin Oncol*. 2015;33(13):1475–1481.
35. Cunningham D, Chau I, Stocken DD, et al. Phase III randomized comparison of gemcitabine versus gemcitabine plus capecitabine in patients with advanced pancreatic cancer. *J Clin Oncol*. 2009;27(33):5513–5518.
36. Loehrer PJ Sr, Feng Y, Cardenes H, et al. Gemcitabine alone versus gemcitabine plus radiotherapy in patients with locally advanced pancreatic cancer: an Eastern Cooperative Oncology Group trial. *J Clin Oncol*. 2011;29(31):4105–4112.
37. Colucci G, Labianca R, Di Costanzo F, et al. Randomized phase III trial of gemcitabine plus cisplatin compared with single-agent gemcitabine as first-line treatment of patients with advanced pancreatic cancer: the GIP-1 study. *J Clin Oncol*. 2010;28(10):1645–1651.
38. Gonçalves A, Gilabert M, François E, et al. BAYPAN study: a double-blind phase III randomized trial comparing gemcitabine plus sorafenib and gemcitabine plus placebo in patients with advanced pancreatic cancer. *Ann Oncol*. 2012;23(11):2799–2805.
39. Philip PA, Benedetti J, Corless CL, et al. Phase III study comparing gemcitabine plus cetuximab versus gemcitabine in patients with advanced pancreatic adenocarcinoma: Southwest Oncology Group-directed intergroup trial S0205. *J Clin Oncol*. 2010;28(22):3605–3610.
40. Marinova M, Rauch M, Mücke M, et al. High-intensity focused ultrasound (HIFU) for pancreatic carcinoma: evaluation of feasibility, reduction of tumour volume and pain intensity. *Eur Radiol*. 2016;26(11):4047–4056.
41. Zhao J, Zhao F, Shi Y, Deng Y, Hu X, Shen H. The efficacy of a new high intensity focused ultrasound therapy for locally advanced pancreatic cancer. *J Cancer Res Clin Oncol*. 2017;143(10):2105–2111.
42. Moureau-Zabotto L, Phélip JM, Afchain P, et al. Concomitant administration of weekly oxaliplatin, fluorouracil continuous infusion, and radiotherapy after 2 months of gemcitabine and oxaliplatin induction in patients with locally advanced pancreatic cancer: a Groupe Coordinateur Multidisciplinaire en Oncologie phase II study. *J Clin Oncol*. 2008;26(7):1080–1085.
43. Mahadevan A, Jain S, Goldstein M, et al. Stereotactic body radiotherapy and gemcitabine for locally advanced pancreatic cancer. *Int J Radiat Oncol Biol Phys*. 2010;78(3):735–742.
44. Marinova M, Huxold HC, Henseler J, et al. Clinical Effectiveness and Potential Survival Benefit of US-Guided High-Intensity Focused Ultrasound Therapy in Patients with Advanced-Stage Pancreatic Cancer. *Ultraschall Med*. Epub 2018 Apr 17.
45. Xiong LL, Hwang JH, Huang XB, et al. Early clinical experience using high intensity focused ultrasound for palliation of inoperable pancreatic cancer. *JOP*. 2009;10(2):123–129.
46. Li PZ, Zhu SH, He W, et al. High-intensity focused ultrasound treatment for patients with unresectable pancreatic cancer. *Hepatobiliary Pancreat Dis Int*. 2012;11(6):655–660.

Cancer Management and Research

Publish your work in this journal

Cancer Management and Research is an international, peer-reviewed open access journal focusing on cancer research and the optimal use of preventative and integrated treatment interventions to achieve improved outcomes, enhanced survival and quality of life for the cancer patient. The manuscript management system is completely online and includes

a very quick and fair peer-review system, which is all easy to use. Visit <http://www.dovepress.com/testimonials.php> to read real quotes from published authors.

Submit your manuscript here: <https://www.dovepress.com/cancer-management-and-research-journal>

Dovepress