

# The Summit Score Stratifies Mortality and Morbidity in Chronic Obstructive Pulmonary Disease

This article was published in the following Dove Press journal:  
*International Journal of Chronic Obstructive Pulmonary Disease*

Benjamin D Horne <sup>1,2</sup>  
Matthew J Hegewald <sup>3</sup>  
Courtney Crim <sup>4</sup>  
Susan Rea<sup>5</sup>  
Tami L Bair<sup>1</sup>  
Denitza P Blagev <sup>3</sup>

<sup>1</sup>Intermountain Medical Center Heart Institute, Salt Lake City, UT, USA;

<sup>2</sup>Division of Cardiovascular Medicine, Department of Medicine, Stanford University, Stanford, CA, USA; <sup>3</sup>Division of Pulmonary Medicine, Department of Internal Medicine, Intermountain Medical Center, Salt Lake City, UT, USA;

<sup>4</sup>Research and Development, GlaxoSmithKline, Research Triangle Park, NC, USA; <sup>5</sup>Care Transformation, Intermountain Healthcare, Salt Lake City, UT, USA

**Introduction:** Tobacco use and other cardiovascular risk factors often accompany chronic obstructive pulmonary disease (COPD). This study derived and validated the Summit Score to predict mortality in people with COPD and cardiovascular risks.

**Methods:** SUMMIT trial subjects (N=16,485) ages 40–80 years with COPD were randomly assigned 50%/50% to derivation (N=8181) and internal validation (N=8304). Three external COPD validations from Intermountain Healthcare included outpatients with cardiovascular risks (N=9251), outpatients without cardiovascular risks (N=8551), and inpatients (N=26,170). Cox regression evaluated 40 predictors of all-cause mortality. SUMMIT treatments including combined fluticasone furoate (FF) 100µg/vilanterol 25µg (VI) were not included in the score.

**Results:** Mortality predictors were FEV<sub>1</sub>, heart rate, systolic blood pressure, body mass index, age, smoking pack-years, prior COPD hospitalizations, myocardial infarction, heart failure, diabetes, anti-thrombotics, anti-arrhythmics, and xanthines. Combined in the Summit Score (derivation: c=0.668), quartile 4 vs 1 had HR=4.43 in SUMMIT validation (p<0.001, 95% CI=3.27, 6.01, c=0.662) and HR=8.15 in Intermountain cardiovascular risk COPD outpatients (p<0.001, 95% CI=5.86, 11.34, c=0.736), and strongly predicted mortality in the other Intermountain COPD populations. Among all SUMMIT subjects with scores 14–19, FF 100µg/VI 25µg vs placebo had HR=0.76 (p=0.0158, 95% CI=0.61, 0.95), but FF 100µg/VI 25µg was not different from placebo for scores <14 or >19.

**Conclusion:** In this post hoc analysis of SUMMIT trial data, the Summit Score was derived and validated in multiple Intermountain COPD populations. The score was used to identify a subpopulation in which mortality risk was lower for FF 100µg/VI 25µg treatment.

**Trial Registration:** The SUMMIT trial is registered at ClinicalTrials.gov as number NCT01313676.

**Keywords:** clinical decision tool, risk score, randomized controlled trial, Intermountain risk score, IMRS

## Plain Language Summary

The Summit Score was derived and internally validated to predict mortality in the SUMMIT trial population and externally validated at Intermountain Healthcare. The Summit Score also predicted COPD exacerbations, cardiovascular events, and changes in spirometry findings.

## Introduction

Chronic obstructive pulmonary disease (COPD) is a chronic, progressive lung disease often caused by tobacco use, a shared risk factor with cardiovascular disease that leads to a high rate of cardiovascular events and mortality.<sup>1,2</sup> Cardiovascular disease

Correspondence: Benjamin D Horne  
Intermountain Medical Center Heart  
Institute, 5121 S. Cottonwood Street, Salt  
Lake City, UT 84107, USA  
Tel +1801-507-4701  
Email benjamin.horne@gmail.com  
Twitter@DrBenjaminHorne

is the second most common cause of death in COPD patients,<sup>3</sup> and the most common cause of death in patients with moderate COPD.<sup>4,5</sup> In non-COPD populations, measures of COPD severity such as spirometry parameters are independently predictive of cardiovascular outcomes.<sup>6,7</sup> In COPD patients, mortality and other respiratory outcomes are also predicted by cardiovascular risk factors, including C-reactive protein, troponin, hypertension, and smoking.<sup>1,2,8</sup> Due to its complexity, COPD may require use of risk predictors related to pulmonary and cardiovascular diseases and to systemic health that existing risk stratification tools do not employ.

A pragmatic parsimonious prediction tool, the Intermountain Mortality Risk Score (IMRS) was created using a broad spectrum of physiologic variables [ie, complete blood count (CBC) and basic metabolic profile (BMP) parameters] to predict all-cause mortality in hospitalized patients.<sup>9</sup> It has been validated in various populations,<sup>9–13</sup> including pulmonary patients<sup>10</sup> and external populations.<sup>9,14,15</sup> Because CBC and BMP parameters can improve and deteriorate over time, IMRS can add unique risk information each time it is calculated.<sup>11</sup> It also predicts common events and diagnoses,<sup>16</sup> is used clinically,<sup>17</sup> and modified versions such as the pulmonary IMRS (pIMRS) for lower-risk COPD exist.<sup>10,17–19</sup>

Unfortunately, the unique needs of patients with moderate severity COPD and cardiovascular risk factors may not be addressed by IMRS, pIMRS, or COPD scores. Subjects in the Study to Understand Mortality and Morbidity in COPD (SUMMIT) trial were included in the original trial based on the presence of both COPD and cardiovascular risk factors.<sup>5,20</sup> Utilizing SUMMIT trial subjects and Intermountain patients, this study's aim was to develop and validate a risk score that predicts mortality and other COPD patient outcomes and that can be used to guide treatment decisions in COPD patients.

## Methods

### Objectives and Populations

The primary objective of this study was to derive and validate a risk score, the Summit Score, for all-cause mortality among individuals with moderate COPD. A secondary objective was to risk stratify SUMMIT trial subjects by the Summit Score to identify one or more subsets in which randomly assigned trial medical therapy was more and less effective for preventing mortality. Other secondary objectives ([Supplement](#)) were to evaluate the

association of the Summit Score with non-fatal outcomes, to derive and validate the Summit Lab Score, and to validate the associations of IMRS and pIMRS with all-cause mortality in the SUMMIT trial population. The Intermountain Healthcare Institutional Review Board approved this post hoc evaluation of SUMMIT trial data as a minimal risk study,<sup>5</sup> and approved evaluation of Intermountain data with a waiver of consent as a minimal risk study.

Populations studied here included subjects from the SUMMIT trial (N=16,485) who were individuals ages 40–80 years with COPD who had moderate airflow limitation and a history of or elevated risk of cardiovascular disease.<sup>5</sup> Moderate COPD in SUMMIT was defined as forced expiratory volume in 1 s (FEV<sub>1</sub>) of 50–70% of predicted, FEV<sub>1</sub>/forced vital capacity (FVC) ratio  $\leq 0.70$ , history of smoking  $\geq 10$  pack-years, and modified Medical Research Council dyspnea scale  $\geq 2$ .<sup>5</sup> Enrollees were randomly assigned 1:1:1:1 to one of four once-daily treatments: an inhaled placebo, vilanterol (VI) 25  $\mu\text{g}$ , fluticasone furoate (FF) 100  $\mu\text{g}$ , or the combination of FF 100  $\mu\text{g}$ /VI 25  $\mu\text{g}$ .<sup>5</sup> Additional details about the SUMMIT trial were previously published.<sup>5,20</sup> Herein, SUMMIT subjects were randomly divided 50%/50% into two populations using a binomial random number generator powered by a long-period Mersenne Twister. The first half of SUMMIT subjects constituted the derivation population in which the Summit Score was created and the other half was evaluated for internal validation.

Three Intermountain populations were evaluated as external validations of the Summit Score, with the primary validation being among outpatients with diagnosed COPD and elevated cardiovascular risks. Intermountain outpatients with elevated cardiovascular risks (N=9251) were ages 40–80 years with a history of CAD, MI, stroke, peripheral arterial disease, or diabetes, or ages 60–80 years who were receiving treatments for one or more of the following: hypercholesterolemia, hypertension, or vascular disease, approximating the cardiovascular risk definition from SUMMIT.<sup>5</sup> Outpatients with COPD but no cardiovascular risks (as defined in SUMMIT,<sup>[5]</sup> which did not include heart failure) and COPD inpatients were also studied ([Supplement](#)). All Intermountain outpatients were managed in an outpatient setting at their first COPD encounter between December 2008 and December 2015. The primary ICD-9 diagnostic codes were 490, 491, 492, 493, 494, 495, or 496. ICD-10 was not used since cohort inclusion ended in 2015. For patients with a primary code

of asthma, COPD was required as a secondary ICD-9 code. Outpatients were followed through March 2018. Mortality was determined from electronic health records, Utah death certificates, and the Social Security death master file. COPD exacerbation (defined as moderate when treated with antibiotics or systemic corticosteroids or as severe when requiring hospitalization) and cardiovascular endpoints (ie, myocardial infarction, unstable angina, stroke, and mortality) were determined from electronic health record data of Intermountain's 22 hospitals and >180 clinics that provide health services to about two thirds of the population of Utah and southeast Idaho.

## Development of the Summit Risk Scores

Derivation of the Summit Score was performed in half of SUMMIT subjects ( $n=8181$ ) using multivariable Cox regression analysis evaluating all-cause mortality, the primary SUMMIT trial outcome.<sup>5,20</sup> Variables evaluated in the Cox regression modeling were: age, sex, race, ethnicity, baseline weight, baseline body mass index (BMI), previous treatment for a COPD exacerbation, number of prior hospitalizations for a COPD exacerbation (categorized as 0, 1, or  $\geq 2$ ), number of prior treated or hospitalized COPD exacerbations (categorized as 0, 1, or  $\geq 2$ ), baseline clinical measures [heart rate (HR), systolic blood pressure (SBP), diastolic blood pressure, FEV<sub>1</sub>, FVC, FEV<sub>1</sub>/FVC ratio], history of smoking, number of pack-years, modified Medical Research Council dyspnea scale score, history of hypertension, history of hypercholesterolemia, diagnosis of diabetes mellitus, previous hospitalization for MI, prior HF diagnosis, previous hospitalization for stroke, history of coronary artery disease (CAD), history of pneumonia, and baseline medications: anti-arrhythmic agents, anti-hypertensives, anti-thrombotics, beta-blockers, calcium channel blockers, diuretics, inhaled corticosteroids, long-acting anticholinergics, long-acting  $\beta_2$  agonists, lipid lowering agents, mucolytics, renin-angiotensin-aldosterone system inhibitors, short-acting anticholinergics, and xanthines. Quantitative variables were categorized into quintiles of similar sample size and age was categorized by decade with ages 40–49 years used as the referent category. Comorbidities and medication variables were categorized as present or absent. Randomized SUMMIT treatments were not considered in the risk score derivation.

Initial analyses used univariable Cox regression to examine each variable above for association with all-cause mortality. Multivariable Cox models used both backward and forward stepwise selection of study covariables.

Additional models utilized forced variable entry for those with  $p < 0.10$  or confounders (ie, variables causing >10% change in another variable's  $\beta$ -coefficient). The final risk model entered predictors with  $p \leq 0.05$  and variables determined in the model building process to be important contributors to risk stratification. Risk score weightings were assigned based on variables'  $\beta$ -coefficients from the final model. The risk score was composed as the sum of scalar weightings for each category of each contributing variable based on a modification of the procedure used to compute IMRS.<sup>9</sup> The scalar weighting for each variable was calculated by subtracting 0.15 from the  $\beta$ -coefficient, dividing the result by 0.15, and rounding that value to the nearest integer. Referent categories (e.g., a comorbidity was not present, a medication was not used, or ages 40–49 years) were assigned a scalar value of zero. Baseline characteristics were evaluated between the SUMMIT derivation and validation populations using the chi-square test for discrete data or the *T*-test for continuous variables. Life table analysis was used to examine mortality rates in each of the derivation and validation populations. C-statistics, sensitivity, specificity, positive predictive value, negative predictive value, and accuracy were also computed for the Summit Score in the derivation and validation populations. The age, dyspnea, airflow obstruction (ADO) index was calculated using standard methodology and c-statistics were calculated.<sup>21</sup> Analyses were performed in SPSS v.23.0 (IBM SPSS Statistics, Armonk, NY).

## Validating the Summit Risk Scores

To validate the Summit Score, the derived scoring scheme was applied to the SUMMIT validation subjects and the Intermountain validations to predict all-cause mortality. Kaplan–Meier and Cox regression methods were used. Among Intermountain COPD patients, as is common among clinical datasets, most did not have spirometry available [only about 10% did, as noted previously<sup>22</sup>] and the data were contained in separate clinical machines (in part, this may be due to spirometry being performed in primary care offices or other locations). Further, although tobacco history is collected routinely, data before 2015 did not include electronic capture and thus pack-years were assigned a null value in the Intermountain validations. Quartiles of each score were created separately for each population. A  $p$ -value of  $p \leq 0.05$  was required in each independent population for validation.

## Stratification by the Summit Score for the Evaluation of Trial Treatments

Once validated, the Summit Score was utilized to identify a subset of SUMMIT trial subjects among whom the active treatment of a combination FF 100 µg/VI 25 µg provided a protective mortality benefit compared with placebo, separating those individuals from one or more subsets in whom the benefit was not evident. A minimum of one third of the population with contiguous risk score values was required as a clinically meaningful subset of individuals in whom a benefit may exist. The maximum number of subjects allowable in the subset was not defined because, if it existed, it was necessarily less than the full trial population [the original analysis (N=16,485) did not find an overall mortality benefit: HR=0.88, CI=0.74, 1.04, p=0.137<sup>5</sup>].

To do so, a bar graph was used to assess where a benefit of the FF 100 µg/VI 25 µg combination medication resided and to define the Summit score boundaries of that subset. A search pattern was defined in which no two contiguous Summit Score values could have greater mortality in those receiving FF 100 µg/VI 25 µg than placebo, and at least two thirds of the scores in the subset had to have lower mortality in the FF 100 µg/VI 25 µg arm than placebo. Hazard curves and Cox regression were used to evaluate the trial medications compared with placebo in the subset with benefit and secondarily in the lack of benefit subsets. Secondary endpoints of cardiovascular events, moderate to severe COPD exacerbations, and change in FEV<sub>1</sub>, FVC, and the FEV<sub>1</sub>/FVC ratio were also evaluated using survival methods or analysis of variance, as appropriate. Other methods are provided in the on-line [Supplement](#).

## Results

Baseline demographics, clinical, risk factor, medication, and other variables for the SUMMIT derivation population and the validation populations are provided in [Table 1](#). The randomization of SUMMIT subjects into derivation and validation groups resulted in the majority of variables being distributed similarly between the two subpopulations, with just two of the 38 variables listed in [Table 1](#) (ie, RDW and short-acting anticholinergic medications) having statistically significant (but not clinically meaningful) differences.

The derivation of the Summit Score discovered that significant predictors of all-cause mortality were: BMI, number of pack years, number of prior COPD hospitalizations, FEV<sub>1</sub>, HR, SBP, prior MI, prior HF diagnosis, prior diabetes diagnosis, age, and prescription of anti-

thrombotics, anti-arrhythmics, and xanthines. The c-statistic for the Summit Score in the derivation population was c=0.668, which was comparable to the SUMMIT validation population (c=0.662) and lower than the Intermountain cardiovascular outpatients (c=0.736). In comparison, the ADO index had c-statistics of c=0.592 (95% CI: 0.567, 0.617) in the SUMMIT derivation and c=0.618 (95% CI: 0.593, 0.644) in the SUMMIT validation populations.

Lengths of longitudinal follow-up and annual mortality rates differed between the populations ([Table 1](#)), but the Summit Score was validated as a mortality risk stratification tool in the SUMMIT validation population and Intermountain outpatient validation population ([Figure 1](#), [Supplemental Figure S1](#)), with risk differences of 4.4- to 7.6-fold between the lowest and highest risk score quartiles ([Table 2](#), [Supplemental Table S1](#)). Examining associations of the Summit Score with mortality among Intermountain populations using quartile thresholds from the SUMMIT validation population resulted in similar findings ([Supplemental Table S2](#) and [Supplemental Figure S2](#)). Predictive values and accuracy of the Summit Score are shown in [Supplemental Table S3](#). Associations were also found of the Summit Score with first COPD exacerbation or cardiovascular event ([Supplemental Table S4](#)) and with changes in spirometry findings ([Supplemental Table S5](#)). Associations are shown for IMRS and pIMRS with mortality in [Supplemental Figure S4](#) and for the Summit Lab Score with mortality in [Supplemental Table S6](#) and [Supplemental Figure S5](#).

Analyses of the four SUMMIT treatments were performed in risk-based substrata of the combined SUMMIT derivation and validation populations (N=16,485), with the substrata defined by levels of the Summit Score. Mortality in each Summit Score value ([Supplemental Figure S3](#)) identified risk score thresholds that differentiated mortality benefit between subjects taking the combination of FF 100 µg/VI 25 µg. Among SUMMIT subjects with a Summit Score of 14–19 (n=9243), [Figure 2](#) reveals that those with the combined FF 100 µg/VI 25 µg treatment had fewer events compared with placebo (HR=0.76, CI=0.61, 0.95, p=0.0158). No effect modification was found when an interaction variable of study treatment with SUMMIT derivation/validation was evaluated (for FF 100 µg/VI 25 µg vs placebo: HR=0.77 in derivation, HR=0.75 in validation; p-interaction= 0.87). In the Summit Score 14–19 subgroup, FF 100 µg/VI 25 µg also was associated with lower risk of moderate to severe COPD exacerbation (HR=0.86, CI=0.77, 0.96, p=0.005) and improved changes in FEV<sub>1</sub>, FVC, and FEV<sub>1</sub>/FVC ratio (all p<0.001) compared with placebo, but not with

**Table 1** Baseline Characteristics of the SUMMIT Derivation Population and the Four Risk Score Validation Populations

Characteristics	SUMMIT	SUMMIT	Intermountain	Intermountain	Intermountain
	Derivation	Validation	Cardiovascular	Non-Cardiovasc	
			Outpatients	Outpatients	Inpatients
Sample size	N=8181	N=8304	N=9251	N=8551	N=26,170
Demographics					
Age (years)	65.2 ± 7.9	65.2 ± 7.9	67.4 ± 11.0	59.9 ± 11.5	66.5 ± 14.6
Sex (female)	24.8%	26.1%	47.4%	53.6%	46.6%
Race (Non-White)	18.8%	19.1%	2.5%	2.4%	3.5%
Ethnicity (Hispanic)	6.8%	7.5%	0.2%	0.2%	0.5%
Body mass index (kg/m <sup>2</sup> )	28.0 ± 5.9	28.0 ± 6.0	30.9 ± 8.6	29.2 ± 7.9	29.2 ± 8.8
Randomized SUMMIT Trial Treatment					
Placebo	25.0%	24.8%	–	–	–
VI 25	25.0%	25.0%	–	–	–
FF 100	24.9%	25.3%	–	–	–
FF 100/VI 25	25.1%	24.9%	–	–	–
Clinical History (Selected Variables)					
Prior COPD exacerbations (≥1)	13.4%	13.3%	3.6%	1.3%	5.3%
Prior COPD treatments (≥1)	32.4%	32.4%	NA	NA	NA
Number of Prior COPD Hospitalizations					
0	86.6%	86.6%	97.3%	99.0%	82.1%
1	11.6%	11.7%	2.7%	1.0%	13.6%
2 or more	1.8%	1.6%	0%	0%	4.3%
Heart rate (beats per minute)	75.8 ± 9.9	76.0 ± 9.9	80.7 ± 15.6	83.6 ± 15.4	87.8 ± 19.7
Systolic blood pressure (mmHg)	133 ± 15	133 ± 15	130 ± 19	130 ± 19	133 ± 26
FEV <sub>1</sub> (mL)	1686 ± 425	1679 ± 422	NA	NA	NA
Mean corpuscular volume (fL)	94.7 ± 5.9†	94.8 ± 6.4†	91.8 ± 5.8	92.1 ± 5.9	92.0 ± 6.7
Red cell distribution width (%)	15.1 ± 1.5†	15.3 ± 1.6†‡	14.5 ± 1.8	14.1 ± 1.7	14.8 ± 2.2
Risk Factors and Comorbidities					
Smoking (current)	46.6%	46.5%	NA	NA	NA
Smoking: Pack Years	41.2 ± 24.4	40.3 ± 24.2	NA	NA	NA
Hypertension	89.9%	90.3%	85.8%	48.0%	73.6%
Hypercholesterolemia	70.0%	69.7%	80.4%	40.6%	55.4%
Diabetes mellitus	30.2%	30.5%	42.5%	0%	25.6%
Myocardial infarction	15.4%	14.8%	18.9%	0%	14.0%
Heart failure	21.2%	20.7%	30.7%	5.6%	23.7%
Stroke	7.2%	6.9%	24.8%	0%	15.5%
Coronary artery disease	50.8%	50.8%	63.1%	0%	42.2%
Pneumonia	16.5%	15.9%	42.0%	25.0%	42.4%
Baseline Medications					
Lipid lowering agent	65.1%	64.6%	6.3%	1.5%	25.9%
Anti-thrombotics	52.8%	52.5%	2.5%	0.5%	25.8%
Beta-blockers	31.6%	31.0%	4.9%	1.0%	26.2%
Diuretics	32.9%	33.2%	5.6%	1.6%	33.2%
Calcium channel blockers	34.5%	34.5%	2.8%	0.8%	14.7%
Anti-arrhythmic agents	5.4%	5.3%	2.7%	0.9%	19.8%
Renin-angiotensin-aldosterone inhib.	66.9%	66.3%	5.9%	1.8%	24.0%
Anti-hypertensives	4.5%	4.7%	5.8%	1.8%	24.4%
Xanthine	14.6%	15.3%	0.1%	0%	0.7%

(Continued)

Table 1 (Continued).

Characteristics	SUMMIT	SUMMIT	Intermountain	Intermountain	Intermountain
			Cardiovascular	Non-Cardiovasc	
	Derivation	Validation	Outpatients	Outpatients	Inpatients
Short-acting anticholinergic	10.5%	12.1%§	2.6%	1.9%	23.2%
Mucolytics	3.0%	3.0%	0.6%	0.2%	2.3%
Corticosteroids	0.6%	0.5%	4.2%	5.5%	22.1%
Long-acting beta-2 agonist	0.4%	0.4%	3.8%	3.2%	14.2%
Long-acting anticholinergic	0.1%	0.2%	2.5%	2.2%	9.3%
Mortality Outcomes					
Mortality, total	6.5%	6.1%	27.1%	12.6%	36.8%
Follow-up, mean±SD (years)	1.96 ± 0.78	1.95 ± 0.79	6.44 ± 2.12	6.36 ± 2.01	4.38 ± 1.97
Follow-up, range (years)	0.88–3.91	0.21–3.91	2.23–9.29	2.25–9.29	0.50–7.50
Mortality, annual rate	3.40%/year	3.01%/year	3.96%/year	1.71%/year	8.40%/year

Notes: †Laboratory data were only available for n=1745 SUMMIT subjects; ‡p=0.007 or §p<0.001 for the comparison of SUMMIT validation vs derivation populations. Abbreviation: NA, not available.

cardiovascular events ( $p=0.12$ ,  $HR=0.81$ ,  $CI=0.62$ ,  $1.06$ ). The impact of the medications on mortality in subjects with a Summit Score  $\leq 13$  ( $n=5610$ ) and  $\geq 20$  ( $n=1632$ ) are shown in [Supplemental Figures S2B](#) and [S2C](#), and results for secondary outcomes in these subsets are also provided in the [Supplement](#). No difference was found between those assigned to FF/VI or placebo based on Summit Score continuous values ( $p=0.36$ ) or categorizations ( $p=0.22$ ; 25%, 25%, and 24% of subjects received placebo and 24%, 25%, 26% received FF 100  $\mu\text{g}/\text{VI}$  25  $\mu\text{g}$  in Summit Scores  $\leq 13$ , 14–19, or  $\geq 20$ , respectively).

## Discussion

### Summary of Findings

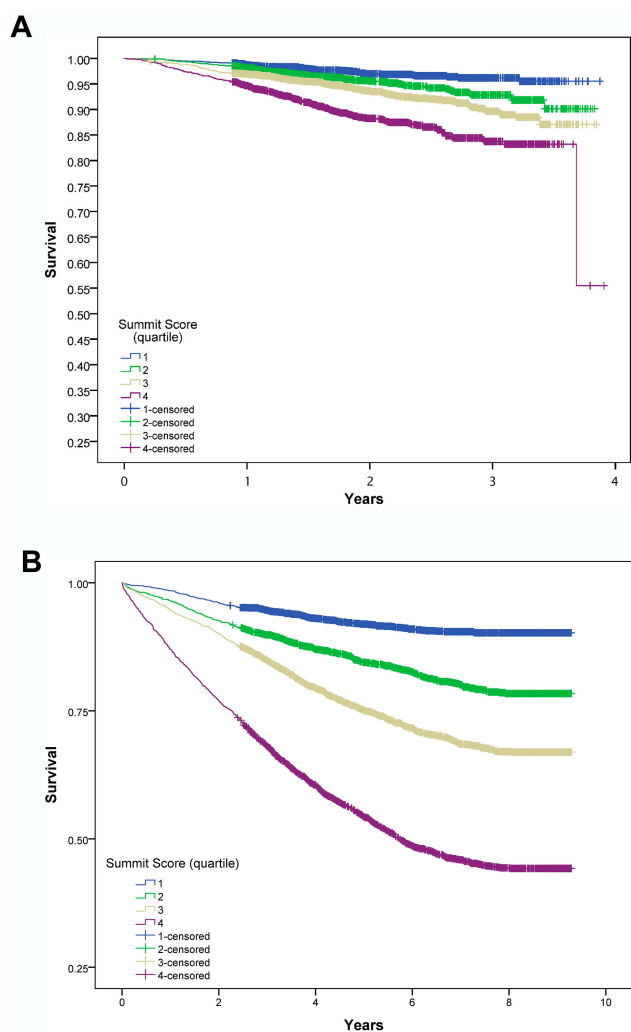
The Summit Score predicted all-cause mortality among a derivation population from the SUMMIT trial and was validated in the other half of the SUMMIT trial subjects and in Intermountain patients who had moderate COPD and cardiovascular risk factors. The Summit Score also predicted mortality in lower-risk Intermountain outpatients and higher-risk inpatients. Among a substratum of SUMMIT trial subjects with intermediate Summit Scores (ie, scores between 14–19, which constituted 56% of subjects), SUMMIT treatment with FF 100  $\mu\text{g}/\text{VI}$  25  $\mu\text{g}$  was associated with a lower risk of all-cause mortality; in contrast, no difference in mortality based on trial medical therapy was found in subjects with Summit Scores  $\leq 13$  or  $\geq 20$ . Finally, the Summit Score predicted COPD exacerbations, cardiovascular events (eg, unstable angina, MI, stroke), changes in

spirometric measures, incident heart failure, incident cardiac arrhythmias, and coronary revascularization.

### COPD, Cardiovascular Disease, and Decision Tools

COPD is a common complex disease that is challenging to diagnose and requires a thorough and encompassing management approach.<sup>1</sup> Patients with COPD frequently have other respiratory and cardiovascular comorbidities, some due to the shared risk factor of tobacco use.<sup>1,2,23–25</sup> COPD severity and prognosis may be stratified by composite risk tools,<sup>1</sup> such as the BODE Index,<sup>26</sup> ADO Index,<sup>21</sup> and DOSE Index,<sup>27</sup> but these scores use a very limited number of predictors and focus on pulmonary factors. Commonly utilized in COPD populations, these validated scores are the mainstay of risk prediction in pulmonary disease populations.<sup>1,21,26,27</sup> Analysis of the ADO Index in the derivation and SUMMIT validation populations herein found c-statistics of 0.592–0.618, which were 0.05–0.07 lower than the Summit Score.

Those risk indices were also derived in small populations (fewer than a thousand) with the intended application to all COPD patients. Their use among severely diseased patients or those with complex mixes of morbidities may not fit the originally derivation.<sup>21</sup> Similarly, while IMRS and pIMRS were predictive of mortality in SUMMIT trial subjects herein, those associations were weaker than in prior evaluations of lower-risk patients.<sup>10</sup> Given the challenges of applying a risk score to patients with moderate COPD and cardiovascular comorbidities, the Summit Score was developed to attune prediction models to that population.



**Figure 1** Kaplan–Meier survival curves displaying the association of the Summit Risk Score with all-cause mortality among: **(A)** the validation half of the SUMMIT trial population, N=8304 (for quartiles 4, 3, and 2 compared with quartile 1: Log rank  $p < 0.001$ ,  $p < 0.001$ , and  $p = 0.002$ , respectively; c-statistic:  $c = 0.662$ ), **(B)** an Intermountain Healthcare validation population of outpatients with COPD and cardiovascular risks, N=9251 (for quartiles 4, 3, and 2 compared with quartile 1: Log rank  $p < 0.001$ ,  $p < 0.001$ , and  $p < 0.001$ , respectively; c-statistic:  $c = 0.736$ ). Time intervals on the x-axes were designated in 365-day intervals for SUMMIT populations and years for Intermountain populations.

To predict mortality, the Summit Score employed a myriad of variables spanning the spectrum of pulmonary disease, cardiovascular disease, and general health. These included clinical exam findings, COPD-specific measurements, cardiovascular parameters, prescription data, and other variables that are not disease-specific. This score utilizes both static and dynamic factors, meaning that some component variables can respond to both positive and negative changes in health (eg, FEV<sub>1</sub>, SBP, and RDW). Static factors are strong predictors (eg, experiencing an MI) but will not return to being absent once they occur. While the scores provided moderate risk discrimination in the trial population and were useful in identifying

subjects who may receive benefit from FF 100 µg/VI 25 µg treatment, among real-world Intermountain patients the risk differences between Summit Score categories were greater. These findings require further study including whether the Summit Score can identify patients for whom FF 100 µg/VI 25 µg is effective in actual practice, and evaluation in implementation science.

Implementation of risk scores in clinical medicine has the goal of achieving best care, whether scores guide a patient care plan or are used to tailor a medication prescription to patient needs. Often today, clinical decision tools such as the Summit Score are used to guide medication prescriptions because the score reveals therapeutic need based on a favorable benefit to risk profile, while indicating which patients do not have a favorable risk-benefit. For example, among atrial fibrillation patients, the CHADS<sub>2</sub> and CHA<sub>2</sub>DS<sub>2</sub>-VASc scores are used to identify which patients should receive oral anticoagulation and which excessive bleeding risk.<sup>28</sup> Among post-stent patients, the DAPT Score is used in determining which patients should receive long-term (ie, >12 months) dual antiplatelet therapy after percutaneous coronary intervention.<sup>29</sup> Instead of guiding a specific medical therapy, IMRS and other scores are used as attention metrics to point clinicians to higher-risk patients and to inform them of which patients require less of their time because they will have the same outcomes from standard care as from intense evaluation and treatment.<sup>17</sup> This approach is associated with lower 30-day mortality and 30-day readmission in high-risk HF patients, with no worsening of outcomes for lower-risk patients.<sup>17</sup>

The Summit Score has the potential to indicate both therapeutic effect of a medical therapy and to be used as an attention metric for aggressive prevention (see the [Supplemental Use Cases](#)). This study suggests that FF 100 µg/VI 25 µg may have varying effectiveness across the spectrum of COPD patients, perhaps due to heterogeneity of disease severity or complexity. A biological rationale exists for the benefit of FF+VI and a reduction in cardiovascular benefits as this combination has been associated with a broad spectrum of anti-inflammatory effects in patients with COPD.<sup>30</sup> Study limitations are described in the [Supplemental Discussion](#).

## Limitations

This study was challenged by a number of issues in the process of developing a risk score since the predictive

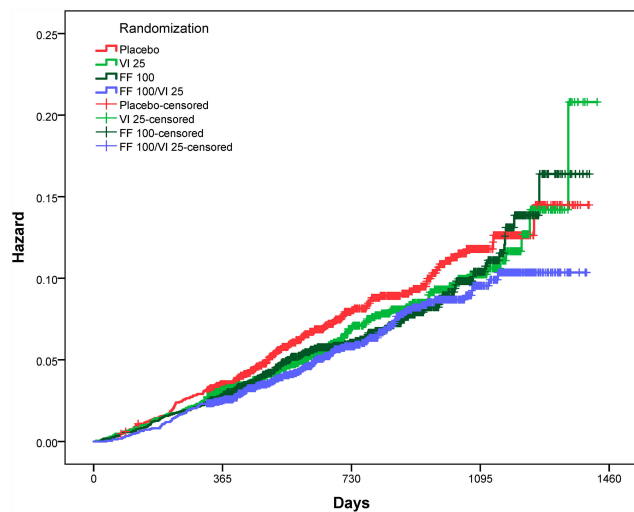
**Table 2** The Association of Quartiles of the Summit Risk Score with All-Cause Mortality in the Internal SUMMIT Validation Population Subset and in the Intermountain Outpatients with COPD and Cardiovascular Risks. As per Table 1, Length of Follow-Up for Mortality Differed Between Populations

Summit Score Category	Mortality	Hazard Ratio (95% CI)	p-value	Sample Size
SUMMIT Trial Internal Validation (N=8304)				
Quartile: 1 (Score: 1–12)	2.6%	1.0 (referent)	—	n=1977
2 (Score: 13–14)	4.5%	1.73 (1.22, 2.45)	0.002	n=1813
3 (Score: 15–17)	6.3%	2.50 (1.83, 3.42)	<0.001	n=2664
4 (Score: 18–32)	11.0%	4.43 (3.27, 6.01)	<0.001	n=1850
Intermountain COPD Outpatients with Cardiovascular Risks (External Validation) (N=9251)				
Quartile: 1 (Score: 0–9)	8.5%	1.0 (referent)	—	n=2207
2 (Score: 10–11)	17.9%	2.17 (1.82, 2.59)	<0.001	n=1932
3 (Score: 12–14)	28.4%	3.59 (3.06, 4.21)	<0.001	n=2795
4 (Score: 15–26)	50.9%	7.62 (6.53, 8.89)	<0.001	n=2317

performance is critically determined by the available data and the nature of the populations studied. One was that the primary study population consisted of individuals who were selected for inclusion in a large prospective randomized clinical trial based on stringent criteria and are unlikely to be broadly representative of clinical practice.<sup>5,20</sup> Actual medical practice includes a broad range of patients rather than those with a tightly defined COPD diagnosis as in a trial, which

may in part account for the greater ability for the Summit Score to stratify risk in the three Intermountain populations given that some parameters were not necessarily pulmonary-related. Further, the Intermountain clinical population was limited because a few Summit Score parameters were not available (i.e., FEV<sub>1</sub>—which was unavailable for ≈90% of patients and for the few who did have spirometry data it was housed in a proprietary vendor database not accessible to study personnel, and smoking status which was unavailable outside of free text reports).

Secondly, this study derived the risk scores among subjects in whom three quarters were assigned an active medication in the SUMMIT trial that may have some effect on mortality (the other quarter received placebo). The derivation of the score, though, did not account for the treatment variable so that subsequent analysis could examine using the score for therapeutic risk stratification. Analysis showed that the percentage of subjects receiving each medication assignment did not differ across levels of the risk score, indicating that the score did not include the treatment effects. If any bias existed due to the treatment effects, thus, it was toward the null hypothesis. Finally, despite that the c-statistics for mortality in the SUMMIT population were of only moderate strength, the risk was strongly stratified by the Summit Score. Further evaluation of the score is needed in additional populations and in studies using the risk score to identify people who will benefit from combined FF 100 µg/VI 25 µg treatment. Because the SUMMIT Trial did not use ICD codes and the Intermountain cohort inclusions ended in 2015, ICD-10 coding was not evaluated herein and could provide improved resolution.



**Figure 2** Hazard curves for the effects of the four SUMMIT trial randomized treatments on all-cause mortality among all SUMMIT trial subjects (ie, both the Summit Score derivation and validation groups). Trial randomizations included: once daily inhaled placebo, vilanterol (VI) 25 µg, fluticasone furoate (FF) 100 µg, or the combination of FF 100 µg and VI 25 µg. Here the combination of FF 100 µg/VI 25 µg (n=2347) had a statistically significantly lower mortality compared with placebo (n=2305) ( $p=0.0158$ , HR= 0.76, CI=0.61, 0.95) among subjects with a Summit Score  $\geq 14$  and  $\leq 19$  (n=9243, which is 56.1% of the SUMMIT trial subjects). The hazard curves for subject with Summit Score  $\leq 13$  and  $\geq 20$  are provided in [Supplemental Figures S2B](#) and [S2C](#).



## Conclusions

The Summit Score was developed and validated in geographically and constitutively distinct populations as a predictor of all-cause mortality. It also predicted COPD and cardiovascular endpoints. When modified to include common laboratory panels (ie, CBC and BMP), the resulting Summit Lab Score also predicted those outcomes (see [Supplement](#)). Uniquely, the Summit Score identified a subset of individuals with similar risk levels who may receive therapeutic benefit from a combination of FF 100 µg/VI 25 µg, which requires additional evaluation and validation. Further study of these therapeutic risk scores in research and clinical implementation environments is indicated.

## Abbreviation

ADO, age, dyspnea, airflow obstruction; BMI, body mass index; BMP, basic metabolic profile; CAD, coronary artery disease; CBC, complete blood count; COPD, chronic obstructive pulmonary disease; FEV<sub>1</sub>, forced expiratory volume in 1 s; FF, fluticasone furoate; FVC, forced vital capacity; HF, heart failure; HR, heart rate; hsCRP, high-sensitivity C-reactive protein; IMRS, Intermountain Mortality Risk Score; MCV, mean corpuscular volume; MI, myocardial infarction; pIMRS, pulmonary Intermountain Mortality Risk Score; RDW, red cell distribution width; SBP, systolic blood pressure; SUMMIT, study to understand mortality and morbidity in COPD; VI, vilanterol.

## Data Sharing

Information on GlaxoSmithKline plc's data sharing commitments and requesting access to anonymized individual participant data and associated documents can be found at [www.clinicalstudydatarequest.com](http://www.clinicalstudydatarequest.com). Intermountain Healthcare patient data are protected by law but may be accessed through collaborative contract by contacting Dr. Horne ([benjamin.horne@imail.org](mailto:benjamin.horne@imail.org)).

## Acknowledgments

The authors thank the SUMMIT Steering Committee members for the approval to conduct this study in the SUMMIT Trial data: Jorgen Vestbo (co-chair, UK), Robert D Brook (USA), Peter M A Calverley (UK), Bartolome R Celli (USA), Fernando Martinez (USA), David E Newby (UK), Courtney Crim, (co-chair, GlaxoSmithKline, USA), Julie A Anderson (GlaxoSmithKline, UK), and Julie Yates (GlaxoSmithKline, USA).

## Author Contributions

BDH had full access to all study data, takes responsibility for the integrity of the data and the accuracy of the data analysis, and had authority over manuscript preparation and the decision to submit the manuscript for publication. Conception and design: BDH, MJH, CC, DPB; acquisition, analysis, or interpretation of data: BDH, MJH, CC, SR, TLB, DPB; drafting of the manuscript: BDH; critical revision for important intellectual content: BDH, MJH, CC, SR, TLB, DPB; final approval of the submitted manuscript: BDH, MJH, CC, SR, TLB, DPB; agreement to be accountable for all aspects of the work: BDH, MJH, CC, SR, TLB, DPB. All authors contributed to data analysis, drafting or revising the article, gave final approval of the version to be published, and agree to be accountable for all aspects of the work.

## Funding

This study was funded by an in-kind grant from GlaxoSmithKline and by a grant from the Intermountain Healthcare Foundry innovation program. The funding sources had no role in the design of the study, the data analysis, the interpretation of the findings, or the writing or publication of the study manuscript.

## Disclosure

BDH is an inventor of clinical decision tools that are licensed to CareCentra and Alluceo and is the PI of grants related to clinical decision tools that were funded by Intermountain Healthcare's Foundry innovation program, the Intermountain Research and Medical Foundation, CareCentra, GlaxoSmithKline, and AstraZeneca. DPB and MH received research funding through AstraZeneca. DPB received grants outside the submitted work from ProLung and ZebraMedical. CC is employed by and holds restricted shares in GlaxoSmithKline. No other potential conflicts of interest exist.

## References

1. Vogelmeier CF, Criner GJ, Martinez FJ, et al. Global strategy for the diagnosis, management, and prevention of chronic obstructive lung disease 2017 report: GOLD executive summary. *Eur Respir J*. 2017;49(3):1700214. doi:10.1183/13993003.00214-2017
2. Fabbri LM, Luppi F, Beghé B, Rabe KF. Complex chronic comorbidities of COPD. *Eur Respir J*. 2008;31:204–212. doi:10.1183/09031936.00114307
3. McGarvey LP, John M, Anderson JA, Zvarich M, Wise RA. Ascertainment of cause-specific mortality in COPD: operations of the TORCH clinical endpoint committee. *Thorax*. 2007;62:411–415. doi:10.1136/thx.2006.072348

4. Calverley PMA, Anderson JA, Celli B, et al. Salmeterol and fluticasone propionate and survival in chronic obstructive pulmonary disease. *N Engl J Med.* 2007;356:775–789. doi:10.1056/NEJMoa063070
5. Vestbo J, Anderson JA, Brook RD, et al.; on behalf of the SUMMIT Investigators. Fluticasone furoate and vilanterol and survival in chronic obstructive pulmonary disease with heightened cardiovascular risk (SUMMIT): a double-blind randomized controlled trial. *Lancet.* 2016;387:1817–1826. doi:10.1016/S0140-6736(16)30069-1
6. Sin DD, Wu L, Man SF. The relationship between reduced lung function and cardiovascular mortality: a population-based study and a systematic review of the literature. *Chest.* 2005;127(6):1952–1959. doi:10.1378/chest.127.6.1952
7. Lee HM, Le H, Lee BT, Lopez VA, Wong ND. Forced vital capacity paired with Framingham risk score for prediction of all-cause mortality. *Eur Respir J.* 2010;36(5):1002–1006. doi:10.1183/09031936.00042410
8. Smith LJE, Moore E, Ali I, Smeeth L, Stone P, Quint JK. Prognostic variables and scores identifying the end of life in COPD: a systematic review. *Int J Chron Obstruct Pulmon Dis.* 2017;12:2239–2256. doi:10.2147/COPD.S137868
9. Horne BD, May HT, Muhlestein JB, et al. Exceptional mortality prediction by risk scores from common laboratory tests. *Am J Med.* 2009;122:550–558. doi:10.1016/j.amjmed.2008.10.043
10. Horne BD, Hegewald M, Muhlestein JB, et al. Pulmonary-specific intermountain risk score predicts all-cause mortality via spirometry, the red cell distribution width, and other laboratory parameters. *Respir Care.* 2015;60:1314–1323. doi:10.4187/respcare.03370
11. Horne BD, Lappé DL, Muhlestein JB, et al. Repeated measurement of the intermountain risk score enhances prognostication for mortality. *PLoS One.* 2013;8:e69160. doi:10.1371/journal.pone.0069160
12. Majercik S, Knight S, Horne BD. The intermountain risk score predicts mortality in trauma patients. *J Crit Care.* 2014;29:882.e1-4. doi:10.1016/j.jcrc.2014.03.016
13. Rassa AC, Horne BD, McCubrey RO, et al. Novel stratification of mortality risk by kidney disease stage. *Am J Nephrol.* 2016;42:443–450. doi:10.1159/000443776
14. Horne BD, Anderson JL, Muhlestein JB, Ridker PM, Paynter NP. The complete blood count risk score and its components including the RDW are associated with mortality in the JUPITER Trial. *Eur J Prev Cardiol.* 2015;22:519–526. doi:10.1177/2047487313519347
15. APP R, Sangoi MB, de Paiva LG, Parciannelo J, da Silva JE, Moresco RN. Complete blood cell count risk score as a predictor of in-hospital mortality and morbidity among patients undergoing cardiac surgery with cardiopulmonary bypass. *Int J Cardiol.* 2015;187:60–62. doi:10.1016/j.ijcard.2015.03.227
16. Horne BD, May HT, Kfoury AG, et al. The intermountain risk score (including the red cell distribution width) predicts heart failure and other morbidity endpoints. *Eur J Heart Fail.* 2010;12:1203–1213. doi:10.1093/eurjhf/hfq115
17. Horne BD, Roberts CA, Rasmussen KD, et al. Risk score-guided multidisciplinary team-based care for heart failure inpatients is associated with lower 30-day readmission and lower 30-day mortality. *Am Heart J.* 2020;219:78–88. doi:10.1016/j.ahj.2019.09.004
18. May HT, Anderson JL, Muhlestein JB, Lappé DL, Ronnow BS, Horne BD. Improvement in the predictive ability of the intermountain mortality risk score by adding routinely collected laboratory tests such as albumin, bilirubin, and white cell differential count. *Clin Chem Lab Med.* 2016;54:1619–1628. doi:10.1515/cclm-2015-1258
19. Horne BD, Muhlestein JB, Bhandary D, et al. Clinically feasible stratification of 1- to 3-year post-myocardial infarction risk. *Open Heart.* 2018;5:e000723. doi:10.1136/openhrt-2017-000723
20. Vestbo J, Anderson J, Brook RD, et al. The Study to Understand Mortality and Morbidity in COPD (SUMMIT) study protocol. *Eur Respir J.* 2013;41:1017–1022. doi:10.1183/09031936.00087312
21. Puhan MA, Garcia-Aymerich J, Frey M, et al. Expansion of the prognostic assessment of patients with chronic obstructive pulmonary disease: the updated BODE index and the ADO index. *Lancet.* 2009;374(9691):704–711. doi:10.1016/S0140-6736(09)61301-5
22. Blagev DP, Collingridge DS, Rea S, et al. The Laboratory-based Intermountain Validated Exacerbation (LIVE) score identifies chronic obstructive pulmonary disease patients at high mortality risk. *Front Med.* 2018;5:173. doi:10.3389/fmed.2018.00173
23. Song S, Yang PS, Kim TH, et al. Relation of chronic obstructive pulmonary disease to cardiovascular disease in the general population. *Am J Cardiol.* 2017;120:1399–1404. doi:10.1016/j.amjcard.2017.07.032
24. Bhatt SP, Dransfield MT. Chronic obstructive pulmonary disease and cardiovascular disease. *Transl Res.* 2013;162:237–251. doi:10.1016/j.trsl.2013.05.001
25. Høiseeth AD, Neukamm A, Karlsson BD, Omeland T, Brekke PH, Søyseth V. Elevated high-sensitivity cardiac troponin T is associated with increased mortality after acute exacerbation of chronic obstructive pulmonary disease. *Thorax.* 2011;66:775–781. doi:10.1136/thx.2010.153122
26. Celli BR, Cote CG, Marin JM, et al. The body-mass index, airflow obstruction, dyspnea, and exercise capacity index in chronic obstructive pulmonary disease. *N Engl J Med.* 2004;350(10):1005–1012. doi:10.1056/NEJMoa021322
27. Jones RC, Donaldson GC, Chavannes NH, et al. Derivation and validation of a composite index of severity in chronic obstructive pulmonary disease: the DOSE index. *Am J Respir Crit Care Med.* 2009;180:1189–1195. doi:10.1164/rccm.200902-0271OC
28. January CT, Wann LS, Alpert JS, et al. 2014 AHA/ACC/HRS guideline for the management of patients with atrial fibrillation: executive summary: a report of the American College of Cardiology/American Heart Association Task Force on practice guidelines and the Heart Rhythm Society. *Circulation.* 2014;130:2071–2104. doi:10.1161/CIR.0000000000000040
29. Yeh RW, Secemsky EA, Kereiakes DJ, et al.; DAPT Study Investigators. Development and validation of a prediction rule for benefit and harm of dual antiplatelet therapy beyond 1 year after percutaneous coronary intervention. *JAMA.* 2016;315:1735–1749. doi:10.1001/jama.2016.3775
30. Barnes NC, Qiu YS, Pavord ID, et al.; SCO30005 Study Group. Antiinflammatory effects of salmeterol/fluticasone propionate in chronic obstructive lung disease. *Am J Respir Crit Care Med.* 2006;173:736–743. doi:10.1164/rccm.200508-1321OC

## International Journal of Chronic Obstructive Pulmonary Disease

Dovepress

### Publish your work in this journal

The International Journal of COPD is an international, peer-reviewed journal of therapeutics and pharmacology focusing on concise rapid reporting of clinical studies and reviews in COPD. Special focus is given to the pathophysiological processes underlying the disease, intervention programs, patient focused education, and self management

protocols. This journal is indexed on PubMed Central, MedLine and CAS. The manuscript management system is completely online and includes a very quick and fair peer-review system, which is all easy to use. Visit <http://www.dovepress.com/testimonials.php> to read real quotes from published authors.

Submit your manuscript here: <https://www.dovepress.com/international-journal-of-chronic-obstructive-pulmonary-disease-journal>