

# Benefit/Risk Profile of Single-Inhaler Triple Therapy in COPD

This article was published in the following Dove Press journal:  
International Journal of Chronic Obstructive Pulmonary Disease

Jean Bourbeau<sup>1</sup>  
Mona Bafadhel<sup>2</sup>  
Neil C Barnes<sup>3,4</sup>  
Chris Compton<sup>3</sup>  
Valentina Di Boscio<sup>3</sup>  
David A Lipson<sup>5,6</sup>  
Paul W Jones<sup>3,7</sup>  
Neil Martin<sup>3,8</sup>  
Gudrun Weiss<sup>3</sup>  
David MG Halpin<sup>9</sup>

<sup>1</sup>Respiratory Epidemiology and Clinical Research Unit, Department of Medicine, McGill University and Research Institute of the McGill University Health Centre, Montreal, QC, Canada; <sup>2</sup>Nuffield Department of Medicine, University of Oxford, Oxford, Oxfordshire, UK; <sup>3</sup>Respiratory Therapy Area, GlaxoSmithKline, Brentford, Middlesex, UK; <sup>4</sup>William Harvey Institute, Bart's and the London School of Medicine and Dentistry, London, UK; <sup>5</sup>Clinical Sciences, GlaxoSmithKline, Collegeville, PA, USA; <sup>6</sup>Pulmonary, Allergy and Critical Care Division, Department of Medicine, Perelman School of Medicine, University of Pennsylvania, Philadelphia, PA, USA; <sup>7</sup>Institute of Infection and Immunity, St George's, University of London, London, UK; <sup>8</sup>University of Leicester, Leicester, UK; <sup>9</sup>University of Exeter Medical School, College of Medicine and Health, University of Exeter, Exeter, UK

**Abstract:** Chronic obstructive pulmonary disease (COPD) is associated with major healthcare and socioeconomic burdens. International consortia recommend a personalized approach to treatment and management that aims to reduce both symptom burden and the risk of exacerbations. Recent clinical trials have investigated single-inhaler triple therapy (SITT) with a long-acting muscarinic antagonist (LAMA), long-acting  $\beta_2$ -agonist (LABA), and inhaled corticosteroid (ICS) for patients with symptomatic COPD. Here, we review evidence from randomized controlled trials showing the benefits of SITT and weigh these against the reported risk of pneumonia with ICS use. We highlight the challenges associated with cross-trial comparisons of benefit/risk, discuss blood eosinophils as a marker of ICS responsiveness, and summarize current treatment recommendations and the position of SITT in the management of COPD, including potential advantages in terms of improving patient adherence. Evidence from trials of SITT versus dual therapies in symptomatic patients with moderate to very severe airflow limitation and increased risk of exacerbations shows benefits in lung function and patient-reported outcomes. Moreover, the key benefits reported with SITT are significant reductions in exacerbations and hospitalizations, with data also suggesting reduced all-cause mortality. These benefits outweigh the ICS-class effect of higher incidence of study-reported pneumonia compared with LAMA/LABA. Important differences in trial design, baseline population characteristics, such as exacerbation history, and assessment of outcomes, have significant implications for interpreting data from cross-trial comparisons. Current understanding interprets the blood eosinophil count as a continuum that can help predict response to ICS and has utility alongside other clinical factors to aid treatment decision-making. We conclude that treatment decisions in COPD should be guided by an approach that considers benefit versus risk, with early optimization of treatment essential for maximizing long-term benefits and patient outcomes.

**Keywords:** all-cause mortality, exacerbations, hospitalizations, ICS, LABA, LAMA

## Introduction

Chronic obstructive pulmonary disease (COPD), the third leading cause of death worldwide,<sup>1</sup> is a major healthcare burden and a common cause of hospital admissions. The progressive nature of the disease is likely to impact on work productivity and, in many countries, this may contribute to higher rates of premature retirement and subsequent loss of income.<sup>2</sup> The treatment and management of COPD also carries a significant economic burden,<sup>3,4</sup> which is mainly attributed to exacerbations of COPD, particularly those leading to hospitalization.<sup>5-8</sup> These have serious clinical implications, resulting in an expedited decline of lung function, decreased health-related quality of life, and increased risk of rehospitalization and mortality.<sup>9-11</sup> Prevention of

Correspondence: Jean Bourbeau  
McGill University Health Centre  
(MUHC), 1001 Decarie Boulevard,  
Montreal, QC, H4A 3J1, Canada  
Tel +1 514 934-1934  
Fax +1 514 934-8577  
Email jean.bourbeau@mcgill.ca

exacerbations and hospitalizations is a major goal of treatment strategies yet remains a significant unmet need.<sup>11</sup>

The Global Initiative for Chronic Obstructive Lung Disease (GOLD) 2020 Strategy report recommends a personalized approach for the treatment and management of patients with COPD.<sup>3</sup> The aim is to reduce both symptom burden and the risk of future exacerbations. Smoking cessation remains the most important modifiable risk factor influencing disease progression in COPD.<sup>3</sup> Despite treatment recommendations such as those in the GOLD report, observations from clinical practice suggest some divergence in prescribing.<sup>12–18</sup> There remains much inertia in how physicians manage and treat COPD, with many primary care providers either choosing to deviate from guideline-indicated treatment or being unaware of these guidelines.<sup>19</sup> It is unknown whether more clearly defined recommendations incorporating exacerbation risk and blood eosinophil count to guide therapy within recently developed frameworks will help to change this. One of the main challenges is to identify those patients whom optimizing therapy can help drive better disease outcomes.

Initial pharmacological therapy for COPD centers on the use of short- and long-acting bronchodilators. Escalation of treatment for patients with symptomatic COPD and at risk of exacerbations includes combined therapy of long-acting bronchodilator and/or inhaled corticosteroid (ICS) containing regimens.<sup>3</sup> The emerging clinical trial data examining single-inhaler triple therapy (SITT) with a long-acting muscarinic antagonist (LAMA), long-acting  $\beta_2$ -agonist (LABA) and ICS for patients with symptomatic COPD and at risk of exacerbations<sup>20–26</sup> has driven further debate around optimizing treatment for these patients.<sup>27–29</sup>

A recent systematic review and meta-analysis has highlighted the superior benefit/risk profile of triple therapy over dual or mono-bronchodilator therapy in patients with a history of exacerbations, noting that in such patients the reduction in exacerbations outweighs the risk of pneumonia.<sup>30</sup> This article reviews evidence from randomized controlled trials (RCTs) that investigated the benefits of SITT for improving lung function and reducing symptoms, exacerbations, hospitalizations, and mortality in patients with COPD compared with those on dual combination therapy, and weighs these against the risk of pneumonia associated with ICS use. We highlight the benefits of SITT on all-cause mortality, explore the limitations of cross-trial comparisons and discuss the role of blood eosinophils as a marker of response to ICS.

Finally, we summarize current treatment recommendations and the position of SITT in the management of COPD.

## Evaluating the Benefits of SITT in COPD: Lessons from the Literature

There is a growing body of evidence that treatment with SITT improves lung function, symptoms, and health-related quality of life and reduces moderate and severe exacerbations in patients with symptomatic COPD. Here, we present an overview of the clinical trials examining the efficacy and safety of SITT in patients with COPD.

### Trials with Lung Function as the Primary Endpoint

The TRILOGY, KRONOS and FULFIL trials had primary endpoints of lung function, symptoms and/or health-related quality of life (Table 1). Baseline patient characteristics for these studies are provided in Table 2. TRILOGY compared beclometasone dipropionate (BDP)/formoterol fumarate (FM)/glycopyrronium bromide (GLY) with BDP/FM over 52 weeks in 1367 patients with symptomatic COPD (with a post-bronchodilator forced expiratory volume in 1 second [FEV<sub>1</sub>] <50%, and at least one exacerbation in the previous year).<sup>25</sup> During the 2-week run-in period, patients received BDP/FM (Table 1).<sup>25</sup> KRONOS was a 24-week trial comparing budesonide (BUD)/GLY/FM with FM/GLY, BUD/FM and open-label BUD/FM (delivered by dry powder inhaler [DPI]) in 1896 patients with symptomatic but non-exacerbating COPD (74% of patients had no exacerbations in the preceding year).<sup>20</sup> Patients received ipratropium bromide as maintenance medication during the run-in period and the use of ICS was permitted (Table 1).<sup>20</sup> In the FULFIL trial, fluticasone furoate (FF)/umeclidinium (UMEC)/vilanterol (VI) was compared with BUD/FM (via DPI) over 24 weeks in 1810 patients with symptomatic COPD (either with FEV<sub>1</sub> <50% predicted, or with FEV<sub>1</sub> 50–<80% predicted and at least two moderate or one severe exacerbation in the preceding year).<sup>21</sup> Patients' COPD maintenance medication was unchanged during the run-in period (Table 1), to more closely resemble clinical practice.<sup>21</sup> A subset of patients remained on study treatment for up to 52 weeks.<sup>21</sup>

All three trials showed significant improvements in lung function with SITT versus dual therapy. In TRILOGY, SITT improved trough FEV<sub>1</sub> by 63 mL at 52 weeks (81 mL at 26 weeks) compared with ICS/LABA, in KRONOS a 59–74 mL improvement was seen with SITT

**Table 1** Exacerbation Rate, Lung Function, and Health-Related Quality of Life Outcomes in the TRILOGY, KRONOS, FULFIL, TRIBUTE, ETHOS, and IMPACT Trials

	Primary Endpoint: FEV <sub>1</sub> and/or SGRQ						Primary Endpoint: Exacerbation Rate	
	TRILOGY <sup>25</sup>	KRONOS <sup>20</sup>		FULFIL <sup>21,87</sup>		TRIBUTE <sup>23</sup>	ETHOS <sup>24,88</sup>	IMPACT <sup>22,89</sup>
	52 Weeks	24 Weeks	24 Weeks	24 Weeks	52 Weeks	52 Weeks	52 Weeks	52 Weeks
<b>Study arms</b>	BDP/FM/GLY BID (N=687) BDP/FM BID (N=680)	1. BUD/GLY/FM BID (N=639) 2. FM/GLY BID (N=625) 3. BUD/FM BID (N=314) 4. BUD/FM DPI open-label BID (N=318)	FF/UMEC/VI QD (N=911) BUD/FM BID (N=899)	FF/UMEC/VI QD (N=210) BUD/FM BID (N=220)	BDP/FM/GLY BID (N=764) IND/GLY QD (N=768)	1. BUD (320)/GLY/FM BID (N=2137) 2. BUD (160)/GLY/FM BID (N=2121) 3. FM/GLY BID (N=2120) 4. BUD/FM BID (N=2131)	1. FF/UMEC/VI QD (N=4151) 2. FF/VI QD (N=4134) 3. UMEC/VI QD (N=2070)	
<b>Run-in period</b>	BDP/FM BID	Ipratropium bromide QID ICS use allowed if patient on a stable dose 4 weeks prior to screening	Current COPD medications	Current COPD medications	IND/GLY QD	Ipratropium bromide QID ICS use allowed if used prior to screening	Current COPD medications	
<b>Recruitment criteria (FEV<sub>1</sub> % predicted, exacerbations, and CAT score)</b>	<ul style="list-style-type: none"> <li>• FEV<sub>1</sub> &lt;50%</li> <li>• ≥1 moderate/severe exacerbation in the preceding year</li> <li>• CAT ≥10</li> </ul>	<ul style="list-style-type: none"> <li>• FEV<sub>1</sub> ≥25–&lt;80%</li> <li>• No history of exacerbations required</li> <li>• CAT ≥10</li> </ul>	<ul style="list-style-type: none"> <li>• FEV<sub>1</sub> &lt;50%, or</li> <li>• FEV<sub>1</sub> ≥50–&lt;80% plus ≥2 moderate or ≥1 severe exacerbation in the preceding year</li> <li>• CAT ≥10</li> </ul>	<ul style="list-style-type: none"> <li>• FEV<sub>1</sub> &lt;50%</li> <li>• ≥1 moderate/severe exacerbation in the preceding year</li> <li>• CAT ≥10</li> </ul>	<ul style="list-style-type: none"> <li>• FEV<sub>1</sub> &lt;50%</li> <li>• ≥1 moderate/severe exacerbation in the preceding year; or</li> <li>• FEV<sub>1</sub> ≥50–&lt;80% plus ≥2 moderate or ≥1 severe exacerbation in the preceding year</li> <li>• CAT ≥10</li> </ul>	<ul style="list-style-type: none"> <li>• FEV<sub>1</sub> ≥25–&lt;65%</li> <li>• ≥1 moderate/severe exacerbation in the preceding year; or</li> <li>• FEV<sub>1</sub> ≥50–&lt;80% plus ≥2 moderate or ≥1 severe exacerbation in the preceding year</li> <li>• CAT ≥10</li> </ul>	<ul style="list-style-type: none"> <li>• FEV<sub>1</sub> &lt;50% plus ≥1 moderate or severe exacerbation in the preceding year; or</li> <li>• FEV<sub>1</sub> ≥50–&lt;80% plus ≥2 moderate or ≥1 severe exacerbation in the preceding year</li> <li>• CAT ≥10</li> </ul>	
<b>Results (ITT population)</b>	0.41 vs 0.53 Rate ratio: 0.77, 95% CI: 0.65, 0.92, P=0.005	0.46 vs 0.95 vs 0.56 vs 0.55 Rate ratio (1 vs 2): 0.48, 95% CI: 0.37, 0.64, P<0.0001 Rate ratio (1 vs 3): 0.82, 95% CI: 0.58, 1.17, P=0.2792 Rate ratio (1 vs 4): 0.83, 95% CI: 0.59, 1.18, P=0.3120	0.22 vs 0.34 Rate ratio: 0.65, 96% CI: 0.49, 0.86, P=0.002	0.20 vs 0.36 Rate ratio: 0.56, 95% CI: 0.37, 0.85, P=0.006	0.50 vs 0.59 Rate ratio: 0.848, 95% CI: 0.723, 0.995, P=0.043	1.08 vs 1.07 vs 1.42 vs 1.24 Rate ratio (1 vs 2): 1.00, 95% CI: 0.91, 1.10 (P-value not reported) Rate ratio (1 vs 3): 0.76, 95% CI: 0.69, 0.83, P<0.001 Rate ratio (1 vs 4): 0.87, 95% CI: 0.79, 0.95, P=0.003	0.91 vs 1.07 vs 1.21 Rate ratio (1 vs 2): 0.85, 95% CI: 0.80, 0.90, P<0.001 Rate ratio (1 vs 3): 0.75, 95% CI: 0.70, 0.81, P<0.001	

(Continued)

Table 1 (Continued).

	Primary Endpoint: FEV <sub>1</sub> and/or SGRQ				Primary Endpoint: Exacerbation Rate	
	TRILIOGY <sup>25</sup>	KRONOS <sup>20</sup>	FULFIL <sup>21,87</sup>		TRIBUTE <sup>23</sup>	IMPACT <sup>22,89</sup>
	52 Weeks	24 Weeks	24 Weeks	52 Weeks	52 Weeks	52 Weeks
Pre-dose FEV <sub>1</sub> (mean change from baseline, mL)	71 vs 8 Mean difference: 63, 95% CI: 32, 94, P<0.001	147 vs 125 vs 73 vs 88 Mean difference (1 vs 2): 22, 95% CI: 4, 39, P=0.014 Mean difference (1 vs 3): 74, 95% CI: 52, 95, P<0.0001 Mean difference (1 vs 4): 59, 95% CI: 38, 80, P<0.0001 <sup>a</sup>	142 vs -29 Mean difference: 171, 95% CI: 131, 194, P<0.001	126 vs -53 Mean difference: 179, 95% CI: 131, 226, P<0.001	Mean difference: 19, NS [22, P<0.05 (overall)]	94 vs -3 vs 40 Mean difference (1 vs 2): 97, 95% CI: 85, 109, P<0.001 Mean difference (1 vs 3): 54, 95% CI: 39, 69, P<0.001
TDI focal score	2.03 vs 1.81 Mean difference: 0.21, 95% CI: -0.10, 0.53, P=0.186	1.25 vs 1.07 vs 1.01 vs 0.78 Mean difference (1 vs 2): 0.18, 95% CI: -0.07, 0.43, P=0.1621 Mean difference (1 vs 3): 0.24, 95% CI: -0.07, 0.54, P=0.1283 Mean difference (1 vs 4): 0.46, 95% CI: 0.16, 0.77, P=0.0031	2.29 vs 1.72 Mean difference: 0.57, 95% CI: 0.30, 0.84, P<0.001	1.74 vs 1.39 Mean difference: 0.34, 95% CI: -0.28, 0.97, P=0.279	NR	0.98 vs 0.71 vs 0.89 <sup>f</sup> Mean difference (1 vs 2): 0.27, 95% CI: 0.04, 0.49, P=0.020 Mean difference (1 vs 3): 0.09, 95% CI: -0.19, 0.37, P=0.522
SGRQ total score (mean change from baseline)	Mean difference: -1.69, 95% CI: -3.20, -0.17, P=0.029	-7.5 vs -6.3 vs -7.1 vs -6.3 Mean difference (1 vs 2): -1.22, 95% CI: -2.30, -0.15, P=0.0259 <sup>b</sup> Mean difference (1 vs 3): -0.45, 95% CI: -1.78, 0.87, P=0.5036 Mean difference (1 vs 4): -1.26, 95% CI: -2.58, 0.06, P=0.0617	-6.6 vs -4.3 Mean difference: -2.2, 95% CI: -3.5, -1.0, P<0.001	-4.6 vs -1.9 Mean difference: -2.7, 95% CI: -5.5, 0.2, P=0.065	Mean difference: -1.64, P<0.01 [-1.68, P<0.001 (overall)]	-5.5 vs -3.7 vs -3.7 Mean difference (1 vs 2): -1.8, 95% CI: -2.4, -1.1, P<0.001 Mean difference (1 vs 3): -1.8, 95% CI: -2.6, -1.0, P<0.001

Notes: <sup>a</sup>Nominally significant; <sup>b</sup>pulmonary function test sub-study population (total N=3088); <sup>c</sup>TDI population (FFUJMEC/VI N=2029; FFVI N=2014; UMEC/VI N=1015).  
 Abbreviations: BDR, beclomethasone dipropionate; BID, twice daily; BUD, budesonide; CAT, COPD Assessment Test; CI, confidence interval; COPD, chronic obstructive pulmonary disease; FEV<sub>1</sub>, forced expiratory volume in 1 second; FF, fluticasone furoate; FM, formoterol; GLY, glycopyrronium; ICS, inhaled corticosteroid; IND, indacaterol; ITT, intent-to-treat; NR, not reported; NS, not significant; QD, once daily; QID, four times daily; SGRQ, St George's Respiratory Questionnaire; TDI, transition dyspnea index; UMEC, umeclidinium; VI, vilanterol.

**Table 2** Patient Characteristics in the TRILOGY, KRONOS, FULFIL, TRIBUTE, ETHOS, and IMPACT Trials

Baseline Characteristics (at Study Entry)	TRIOLOGY <sup>25</sup>	KRONOS <sup>20</sup>	FULFIL <sup>21,87a</sup>	TRIBUTE <sup>23b</sup>	ETHOS <sup>24,90</sup>	IMPACT <sup>22</sup>
<b>Sex</b>						
Female	24%	29%	26%	28%	40%	34%
Male	76%	71%	74%	72%	60%	66%
<b>Ethnicity</b>						
White	>99%	50%	85%	92% <sup>c</sup>	85% <sup>b</sup>	78%
Other	<1%	50%	15%	7% <sup>c</sup>	15% <sup>b</sup>	22%
<b>Age, mean (years)</b>	63.3–63.8	64.9–65.9	63.9	64.4–64.5	64.6–64.8	65.3
<b>BMI, mean (kg/m<sup>2</sup>)</b>	26.3–26.4	26.1–26.3	26.9	25.7–26.6	27.5 <sup>b</sup>	26.6
<b>GOLD classification</b>						
GOLD B	0%	NR	46%	NR	NR	30%
GOLD D	100%	NR	54%	NR	NR	70%
<b>FEV<sub>1</sub>, % predicted<sup>d</sup></b>						
Mean	36.2–36.9	50.0–50.7	45.3%	36.4	43.1–43.6	45.5
≥80%	0%	NR (inclusion criteria: <80%)	<1%	0%	0%	<1%
50% to <80%	0%	NR	33%	0%	29%	36%
30% to <50%	77%	NR	54%	80%	60%	48%
<30%	23%	NR	13%	20%	11%	16%
<b>CAT score, mean</b>	20.8	18.0–18.7	19.1	NR (inclusion criteria: ≥10)	19.5–19.7	20.1
<b>Moderate/severe exacerbations in the preceding year</b>						
0	NR (inclusion criteria: ≥1)	74%	35%	0%	<1%	<1%
1	NR	19%	28%	81%	43%	45%
≥2	NR	7%	37%	19%	57%	55%
Raw calculated annual rate	1.2	0.3–0.4	NR	1.2	1.7	NR

(Continued)

Table 2 (Continued).

Baseline Characteristics (at Study Entry)	TRILOGY <sup>25</sup>	KRONOS <sup>20</sup>	FULFIL <sup>21,87a</sup>	TRIBUTE <sup>23b</sup>	ETHOS <sup>24,90</sup>	IMPACT <sup>22</sup>
<b>Prior ICS use</b>						
ICS at study entry (alone or as any combination)	74%	72%	66%	66%	80%	71%
Triple therapy (ICS/LABA/LAMA)	0%	27% <sup>a</sup>	28%	0%	39% <sup>b</sup>	38%

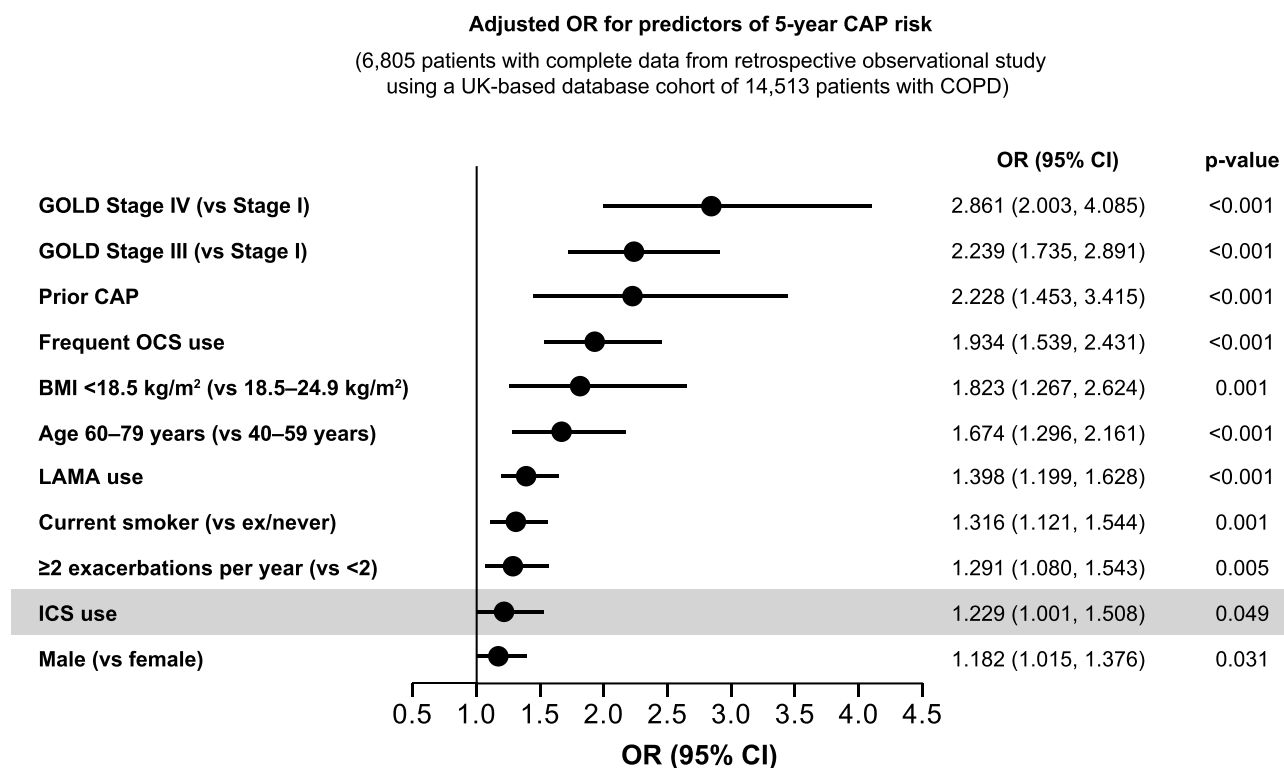
**Notes:** Unless otherwise indicated, data are % of patients in the intention-to-treat population. Mean values are given as a range over the treatment arms when data for the overall population were not provided. <sup>a</sup>Data presented for the ITT population (24 weeks); <sup>b</sup>data presented are for the safety population; <sup>c</sup>data missing for a total of 16 patients in the study; <sup>d</sup>post-salbutamol administration.

**Abbreviations:** BMI, body mass index; CAT, COPD Assessment Test; COPD, chronic obstructive pulmonary disease; FEV<sub>1</sub>, forced expiratory volume in 1 second; GOLD, Global Initiative for Chronic Obstructive Lung Disease; ICS, inhaled corticosteroid; LABA, long-acting  $\beta_2$ -agonist; LAMA, long-acting muscarinic antagonist; NR, not reported.

versus ICS/LABA over 24 weeks, and in FULFIL a 171 mL improvement at 24 weeks (179 mL at 52 weeks; Table 1). There were generally no significant improvements in Transition Dyspnea Index (TDI) scores, except for the comparison of BUD/GLY/FM with open-label BUD/FM in KRONOS (Table 1). Improvements in health-related quality of life measured by the St George's Respiratory Questionnaire (SGRQ) were seen in all trials, although results were not always statistically significant (Table 1).<sup>20,21,25</sup> Overall, data from these three trials demonstrated the lung function and health-related quality of life benefits with SITT versus ICS/LABA dual therapy in patients with symptomatic COPD.

The rate of moderate or severe exacerbations was a defined secondary endpoint in all three trials, although, in keeping with the patient population recruited, reported annual rates of exacerbations were low. Both TRILOGY and FULFIL reported significant reductions in moderate/severe exacerbation rates with SITT versus ICS/LABA (Table 1).<sup>21,25</sup> In the KRONOS trial, there was a significant reduction in exacerbation rates with BUD/GLY/FM versus FM/GLY but not versus BUD/FM or open-label BUD/FM.<sup>20</sup> Unusually, the raw exacerbation rate captured in the year before study entry was lower than the model-estimated exacerbation rate observed during the trial in all treatment arms; this was most notable in the FM/GLY arm (0.3 before study entry; 0.95 model-estimated at 24 weeks), where it increased to more than double the rate in the BUD/GLY/FM arm at the end of the trial (0.4 before study entry; 0.46 model-estimated at 24 weeks).<sup>20</sup> This observation is unexpected and these data thus need to be interpreted with caution.

The incidence of pneumonia was evaluated in the safety analyses of all three trials. It is important to note that inferences regarding ICS-induced pneumonia risk need to take into account interactions with other risk factors.<sup>31</sup> For example, a recent pooled analysis of studies in patients with COPD treated with ICS/LABA medications indicated that the only risk factor for ICS-induced pneumonia was a low body mass index (<25 kg/m<sup>2</sup>).<sup>31</sup> Previous studies have also shown that the highest risk factors for pneumonia are disease severity and exacerbation history (Figure 1). In the TRILOGY, KRONOS, and FULFIL trials, pneumonia rates were low and comparable with each SITT and comparator groups (Table 3). It is worth noting that these clinical trials assessed pneumonia



**Figure 1** Disease severity and exacerbation history are strongly correlated with pneumonia risk whereas ICS only adds a small additional risk.

**Abbreviations:** BMI, body mass index; CAP, community-acquired pneumonia; CI, confidence interval; COPD, chronic obstructive pulmonary disease; GOLD, Global Initiative for Chronic Obstructive Lung Disease; ICS, inhaled corticosteroid; LAMA, long-acting muscarinic antagonist; OCS, oral corticosteroid; OR, odds ratio. The graph has been independently created from the original data.<sup>49</sup>

in different ways, which limits cross-trial comparisons (Table 4).

## Trials with Exacerbation Reduction as the Primary Outcome

Exacerbation rate was the primary endpoint in the TRIBUTE, IMPACT, and ETHOS trials (Table 1). In TRIBUTE, BDP/FM/GLY was compared with indacaterol (IND)/GLY over 52 weeks in 1532 patients with symptomatic COPD with severe or very severe airflow limitation ( $FEV_1 < 50\%$  predicted) and at least one moderate or severe exacerbation in the previous year (baseline characteristics for this and the other studies discussed in this section are provided in Table 2).<sup>23</sup> Patients received one inhalation of IND/GLY per day during the run-in period (Table 1).<sup>23</sup> The IMPACT trial compared FF/UMEC/VI with FF/VI and UMEC/VI over 52 weeks in 10,355 patients with symptomatic COPD and at least one exacerbation in the previous year (55% had  $\geq 2$  moderate or severe exacerbations [Table 2]).<sup>22</sup> Patients continued on their COPD maintenance medication during the run-in

period (Table 1), reflecting clinical practice.<sup>22,32</sup> The ETHOS trial compared BUD/GLY/FM, at two different doses of BUD (320 and 160  $\mu\text{g}$ ), with FM/GLY and BUD/FM over 52 weeks in 8509 patients with symptomatic COPD and a history of exacerbations (57% had  $\geq 2$  moderate or severe exacerbations [Table 2]).<sup>24</sup> Patients discontinued maintenance medications during the run-in period, and received ipratropium bromide, which may have contributed to almost 50% of screened patients not being eligible for randomization (Table 1).<sup>24</sup>

In all studies, SITT reduced moderate/severe exacerbation rates and improved lung function and health-related quality of life (as measured by SGRQ total score) compared with dual therapies (Table 1).<sup>22–24</sup> In TRIBUTE, BDP/FM/GLY reduced the annual rate of moderate/severe exacerbations by 15% versus IND/GLY. The observed exacerbation rate with each treatment was low, reflecting the characteristics of the patients recruited (81% of patients had one, and only 19% two or more, moderate or severe exacerbations in the preceding year). Compared with IND/GLY, BDP/FM/GLY also significantly improved SGRQ (difference  $-1.6$  units) but did not significantly improve  $FEV_1$  at 52 weeks (difference 19 mL).<sup>23</sup> In

**Table 3** Pneumonia Incidence in the TRILOGY, KRONOS, FULFIL, TRIBUTE, ETHOS, and IMPACT Trials

	TRILOGY <sup>25</sup>		KRONOS <sup>20</sup>		FULFIL <sup>21,87</sup>		TRIBUTE <sup>23</sup>		ETHOS <sup>24</sup>		IMPACT <sup>22,89</sup>	
	52 Weeks	24 Weeks	24 Weeks	52 Weeks	24 Weeks	52 Weeks	52 Weeks	52 Weeks	52 Weeks	52 Weeks	52 Weeks	
<b>Study arms</b>	BDP/FM/GLY BID (N=687) BDP/FM BID (N=680)	1. BUD/GLY/FM BID (N=639) 2. FM/GLY BID (N=625) 3. BUD/FM BID (N=314) 4. BUD/FM DPI open-label BID (N=318)	FF/UMEC/VI QD (N=911) BUD/FM BID (N=899)	FF/UMEC/VI QD (N=210) BUD/FM BID (N=220)	BDP/FM/GLY BID (N=764) IND/GLY QD (N=768)	1. BUD (320)/GLY/FM BID (N=2137) 2. BUD (160)/GLY/FM BID (N=2121) 3. FM/GLY BID (N=2120) 4. BUD/FM BID (N=2131)	1. FF/UMEC/VI QD (N=4151) 2. FF/VI QD (N=4134) 3. UMEC/VI QD (N=2070)					
<b>Pneumonia AE</b>	3.3% vs 2.6%	1.9% vs 1.6% vs 1.9% vs 1.3% (over 24 weeks) <sup>a</sup>	2.2% vs 0.8% <sup>c</sup>	1.9% vs 1.8% <sup>c</sup>	3.7% vs 3.5%	4.2% vs 3.5% vs 2.3% vs 4.5% <sup>a</sup>	7.6% vs 7.1% vs 4.7% <sup>c</sup>					
<b>Pneumonia AE incidence in ICS- vs non-ICS-containing treatment arms</b>	N/A	Fold difference: 1 vs 2: 1.2-fold 3 vs 2: 1.2-fold 4 vs 2: 0.8-fold	N/A	N/A	Fold difference: 1.0-fold	Fold difference: 1 vs 3: 1.9-fold 2 vs 3: 1.6-fold 4 vs 3: 2.0-fold	Fold difference: 1 vs 3: 1.6-fold 2 vs 3: 1.5-fold					
<b>Pneumonia SAE</b>	2.2% vs 1.0%	1.3 vs 1.0 vs 0.3 vs 0 (over 24 weeks) <sup>a,b</sup>	1.2% vs 0.3% <sup>d</sup>	1.9% vs 1.8% <sup>d</sup>	2.4% vs 2.2%	3.0% vs 2.5% vs 1.3% vs 2.4% <sup>a</sup>	4.4% vs 3.7% vs 2.6%					
<b>Pneumonia SAE incidence in ICS- vs non-ICS-containing treatment arms</b>	N/A	Fold difference: 1 vs 2: 1.3-fold 3 vs 2: 0.3-fold 4 vs 2: N/A	N/A	N/A	Fold difference: 1.1-fold	Fold difference: 1 vs 3: 2.3-fold 2 vs 3: 1.9-fold 4 vs 3: 1.8-fold	Fold difference: 1 vs 3: 1.7-fold 2 vs 3: 1.4-fold					

**Notes:** AEs/serious AEs were defined as AEs/SAEs that are pharmacologically related to ICS, LAMA, or LABA. <sup>a</sup>Confirmed by clinical endpoint committee; <sup>b</sup>incidence based on un adjudicated cases of pneumonia classified by the investigator as serious; <sup>c</sup>reported as pneumonia AEs; <sup>d</sup>reported as pneumonia serious AEs.

**Abbreviations:** AE, adverse event; AEsI, adverse event of special interest; ICS, inhaled corticosteroid; N/A, not applicable; NR, not reported; SAE, serious adverse event.



Table 4 Capture and Assessment of Pneumonia in the TRILOGY, KRONOS, FULFIL, TRIBUTE, ETHOS, and IMPACT Trials

Pneumonia Capture and Assessment	TRILOGY <sup>25</sup>	KRONOS <sup>20</sup>	FULFIL <sup>21,87</sup>	TRIBUTE <sup>23</sup>	ETHOS <sup>24</sup>	IMPACT <sup>22,89</sup>
<b>Assessment method</b>	NR	According to a clinical diagnosis of pneumonia by the investigator and confirmatory radiography within 14 days of diagnosis and treatment with antibiotics and at least two clinical signs, symptoms, or laboratory findings <sup>a</sup>	A diagnosis of pneumonia was assigned according to the clinical judgement of the investigator. All suspected pneumonias were required to be confirmed by the presence of new infiltrate(s) on chest imaging and at least two signs or symptoms <sup>a</sup>	In cases of clinical features suggesting a diagnosis of pneumonia, investigators were asked to undertake, whenever possible, further investigations based on their clinical experience and judgement; over 80% of pneumonia cases were diagnosed based on medical imaging	According to a clinical diagnosis of pneumonia by the investigator and confirmatory radiography within 14 days of diagnosis and treatment with antibiotics and increased respiratory symptoms <sup>a</sup>	A diagnosis of pneumonia was assigned according to the clinical judgement of the investigator. All suspected pneumonias were required to be confirmed by the presence of new infiltrate(s) on chest imaging and at least two signs or symptoms <sup>a</sup>
<b>Capture and analysis/presentation method</b>	Events reported as AEs, according to MedDRA v16.0 preferred terms: pneumonia, bronchopneumonia, and pneumonia aspiration	Events reported as AEs	Events reported as AEs and analyzed/presented as AESIs (according to a selection of 69 MedDRA preferred terms)	Events reported as AEs, according to MedDRA v18.0 preferred terms: pneumonia, bronchopneumonia, lobar pneumonia, pneumonia bacterial, pneumonia streptococcal, pneumonia viral, and interstitial lung disease <sup>b</sup>	Events reported as AEs	Events reported as AEs and analyzed/presented as AESIs (according to a selection of MedDRA preferred terms)
<b>Adjudication</b>	No	All AEs reported as pneumonia were reviewed by an independent clinical endpoint committee	All SAEs were adjudicated by an independent clinical endpoint committee	No	All AEs reported as pneumonia were reviewed by an independent clinical endpoint committee	All SAEs were adjudicated by an independent adjudication committee blinded to treatment assignment

**Notes:** AESIs/serious AESIs were defined as AEs/SAEs that are pharmacologically related to the use of ICS, LAMA, or LABA. <sup>a</sup>Increased cough, increased sputum purulence or production, adventitious breath sounds on auscultation, dyspnea or tachypnoea, fever, elevated white blood cell counts, hypoxemia; <sup>b</sup>in addition, one event of pulmonary tuberculosis was considered, since the investigator reported that this was a tuberculous pneumonia; other events belonging to the pulmonary tuberculosis preferred term were not considered.

**Abbreviations:** AE, adverse event; AESI, adverse event of special interest; COPD, chronic obstructive pulmonary disease; ICS, inhaled corticosteroid; LABA, long-acting  $\beta_2$ -agonist; LAMA, long-acting muscarinic antagonist; MedDRA, Medical Dictionary for Regulatory Activities; NR, not reported; SAE, serious adverse event.

IMPACT, FF/UMEC/VI significantly reduced the annual rate of moderate or severe COPD exacerbations by 15% compared with FF/VI and by 25% compared with UMEC/VI.<sup>22</sup> FF/UMEC/VI also significantly improved trough FEV<sub>1</sub> (difference 97 mL vs FF/VI, 54 mL vs UMEC/VI) and SGRQ (difference -1.8 units vs each dual therapy). Recently published post hoc analyses of IMPACT show that the observed improvements in exacerbations, FEV<sub>1</sub>, and SGRQ with FF/UMEC/VI compared with UMEC/VI were not driven by abrupt ICS withdrawal in prior ICS users randomized to LAMA/LABA.<sup>32</sup> In ETHOS, both BUD/GLY/FM arms led to a significant reduction in the annual rate of moderate or severe exacerbations (13–25% reduction; Table 1). BUD 320 µg SITT also improved trough FEV<sub>1</sub> compared with FM/GLY and BUD/FM (difference 55 and 65 mL, respectively), and SGRQ total score (difference -1.6 and -1.4 units, respectively) (Table 1).

The incidence of pneumonia was evaluated in all three of these trials. Using the LAMA/LABA arm as a baseline in each of these studies, the results show no difference in pneumonia adverse event (AE) incidence in TRIBUTE between SITT and LAMA/LABA, a 1.6-fold difference in IMPACT and a 1.9-fold difference in ETHOS (for BUD 320 µg SITT vs LAMA/LABA) (Table 3). Data were similar with regards to pneumonia serious AEs, with a 1.1-fold difference in TRIBUTE, 1.7-fold in IMPACT and 2.3-fold in ETHOS (for BUD 320 µg SITT vs LAMA/LABA) (Table 3). ETHOS and IMPACT showed the clearest evidence for increased risk of pneumonia for ICS-containing medicines.<sup>22,24</sup> This was most likely related to the severity of the patient populations and the size of the studies, and the relative increase in risk with ICS use was comparable to LAMA/LABA treatment arms.<sup>22,24</sup> Cross-trial comparisons should be interpreted with extreme caution due to differences in trial design, baseline population characteristics, definitions of pneumonia (adjudicated vs all reported; Table 4), and assessment of outcomes. This was recognized in a 2016 report from the European Medicines Agency (EMA)'s Pharmacovigilance Risk Assessment Committee (PRAC), which recognized pneumonia as a class effect of ICS-containing therapies in patients with COPD, with no conclusive evidence of intra-class differences.<sup>33</sup> Similarly, a European public assessment report (EPAR) assessment report on BDP/FM/GLY published by the EMA in December 2018 concluded that: Differences in study design, methodology for confirming the diagnosis of pneumonia, sample size and populations assessed ... do not

allow drawing meaningful conclusions of whether Trimbrow® has a more favorable benefit/risk profile ... than the triple combination [FF/UMEC/VI] assessed in the IMPACT study.<sup>34</sup>

## Head-to-Head Trials of Triple Therapy with Different ICS Components

While it remains very difficult to make cross-trial comparisons, head-to-head trials comparing different ICS-containing treatments in the same population help to understand benefit and risk. The TRISTAR trial compared SITT using BDP/FM/GLY with multiple-inhaler triple therapy in the form of FF/VI plus tiotropium (TIO) as the comparator group.<sup>35</sup> The study was conducted over 26 weeks in 1157 patients with symptomatic COPD with severe or very severe airflow limitation and at least one exacerbation in the preceding year. Results showed that both triple therapies had comparable benefit and risk profiles. BDP/FM/GLY was non-inferior to FF/VI plus TIO for the primary endpoint of change from baseline in SGRQ total score at Week 26, with improvements of -6.77 and -7.82 units, respectively.<sup>35</sup> Improvements in trough FEV<sub>1</sub> at Week 26 were greater with FF/VI plus TIO (109 mL) compared with BDP/FM/GLY (59 mL), and rates of moderate and severe exacerbations over the 26 weeks of treatment were low and comparable between the treatment arms (0.516 for BDP/FM/GLY and 0.474 for FF/VI plus TIO).<sup>35</sup> Similar rates of serious AEs of pneumonia (captured using the preferred terms of bronchopneumonia, lobar pneumonia, pneumonia, and pneumonia staphylococcal) were reported for BDP/FM/GLY (1.4%) and FF/VI plus TIO (1.9%).<sup>35</sup>

Two different ICS-containing treatments were also compared in the FULFIL trial. As discussed above, FF/UMEC/VI significantly improved FEV<sub>1</sub> and SGRQ total score and reduced exacerbations at 24 weeks compared with BUD/FM.<sup>21</sup> The rate of pneumonia AEs of special interest (AESIs; defined as AEs that are pharmacologically related to the use of ICS, LAMA or LABA) was 2% with FF/UMEC/VI and 1% with BUD/FM at 24 weeks and was 2% for both treatments at 52 weeks. Thus, in both FULFIL and TRISTAR, pneumonia rates were comparable between treatment arms.

## Hospitalizations and All-Cause Mortality

Patients with COPD account for approximately one-quarter of all hospitalizations.<sup>36</sup> Severe exacerbations of COPD leading to hospitalization are associated with

substantial mortality and risk of recurrence, with the risk of death highest after a hospitalization and increasing with the frequency of such events.<sup>11,37–40</sup> Reducing exacerbation-related hospitalizations is an essential treatment goal for many patients with COPD. Typically, clinical trials have focused on the incidence of moderate and severe exacerbations combined (data for which have already been described); however, trials conducted in a population of patients at high risk of exacerbation, such as TRIBUTE, IMPACT, and ETHOS, have also assessed severe exacerbations (events leading to hospitalization or death) separately.<sup>22–24</sup> Two of these trials, IMPACT and ETHOS, also assessed the risk of all-cause mortality as a pre-specified endpoint.<sup>22,24</sup>

In TRIBUTE, there was a non-significant reduction in the rate of severe exacerbations with BDP/FM/GLY SITT compared with IND/GLY (Table 5).<sup>23</sup> In the ETHOS trial, BUD 320 µg SITT significantly reduced severe exacerbation rates versus BUD/FM (20% relative reduction) but not versus FM/GLY (16% relative reduction;  $P=0.09$ ); none of the comparisons between BUD 160 µg SITT and dual therapies were statistically significant (Table 5).<sup>24</sup> In IMPACT, SITT with FF/UMEC/VI significantly reduced the annual rate of severe exacerbations compared with UMEC/VI (34% relative reduction), but not FF/VI (13% relative reduction;  $P=0.06$ ) (Table 5).<sup>22</sup>

All-cause mortality was not a pre-specified outcome in the TRIBUTE trial; incidence of AEs leading to death was 2% in the BDP/FM/GLY arm and 3% in the IND/GLY arm.<sup>23</sup> A post hoc pooled analysis evaluated all fatal AEs reported in the TRILOGY, TRINITY, and TRIBUTE trials.<sup>26</sup> A non-significant trend was observed for reduced risk of a fatal AE in patients with severe/very severe COPD at increased risk for exacerbations who received ICS-containing versus non-ICS-containing treatments (29% relative risk reduction [0.71% absolute risk reduction];  $P=0.066$ ). A similar non-significant reduction in fatal AEs was seen for BDP/FM/GLY SITT versus non-ICS treatments (28% relative risk reduction [0.69% absolute risk reduction];  $P=0.096$ ).<sup>26</sup> These findings, however, should be interpreted with caution for several reasons: mortality was not a pre-specified endpoint in any of the studies; follow-up was incomplete; the absence of a non-ICS arm in TRILOGY; the majority of patients (58%) in the pooled comparator group received only LAMA and not dual therapy; and the analysis was based on the number of patients with AEs that led to a fatal outcome rather than on fatal events.

The TORCH and SUMMIT trials, both powered for the primary outcome of all-cause mortality, failed to show a statistically significant benefit on survival for ICS/LABA compared with placebo, despite fewer deaths with ICS/LABA.<sup>41,42</sup> However, there are key differences in study population between these earlier studies and the more recent studies of SITTs that should be taken into consideration when evaluating the potential value of ICS in reducing mortality. TORCH recruited patients with a pre-bronchodilator FEV<sub>1</sub> <60% predicted and post-bronchodilator increase in FEV<sub>1</sub>% predicted <10%, while SUMMIT recruited those with moderate airflow limitation (FEV<sub>1</sub> 50–70% predicted) and a history or increased risk of cardiovascular disease; in neither study was a history of exacerbations required, which is a major difference in the patients enrolled in these studies compared with the more recent IMPACT and ETHOS trials.

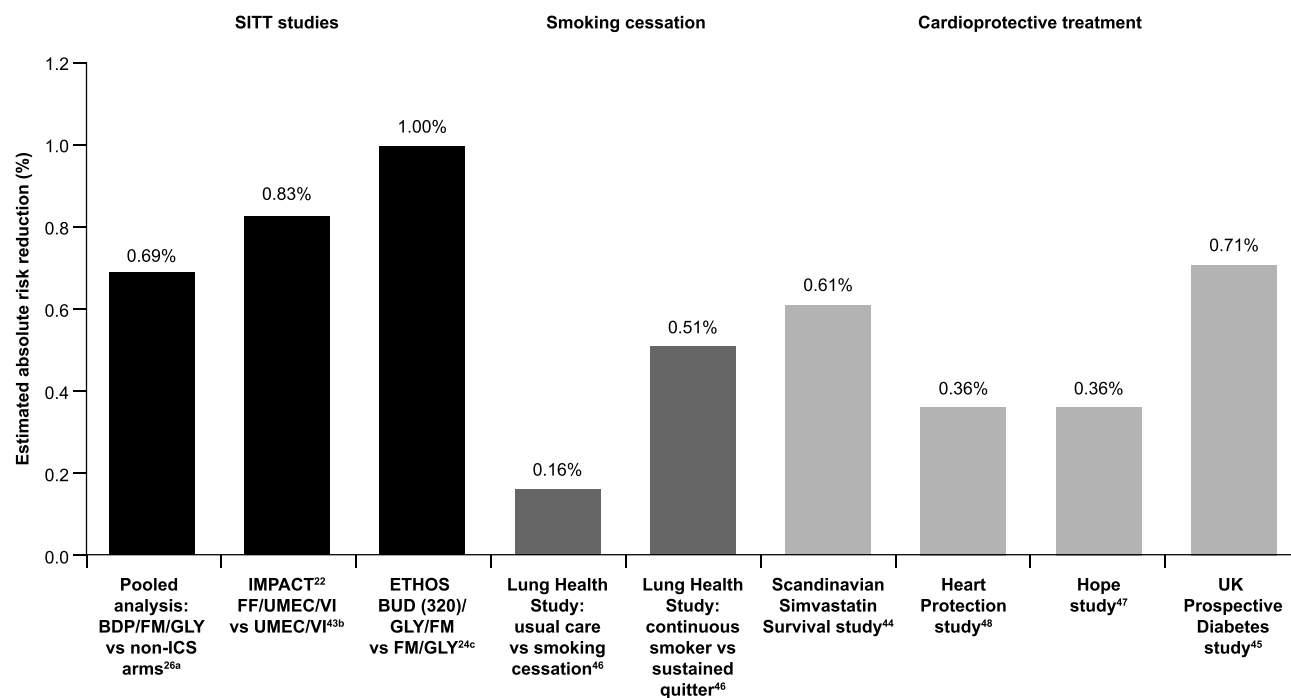
All-cause mortality was prospectively examined as a pre-specified endpoint in both the IMPACT and ETHOS trials. In IMPACT, FF/UMEC/VI significantly reduced the risk of all-cause on-treatment mortality by 42% compared with UMEC/VI in patients with symptomatic COPD and at high risk of exacerbations (absolute risk reduction: 0.68%).<sup>22</sup> The inclusion of off-treatment deaths showed a significant 29% reduction in the risk of all-cause mortality with FF/UMEC/VI (Table 5).<sup>22</sup> These findings have since been confirmed in a recent post hoc analysis following the collection of additional vital status data, which provides vital status at nominal Week 52 for 99.6% of the intent-to-treat population and identified 27 additional off-treatment deaths.<sup>43</sup> The data were consistent with the original analysis and showed a 28% reduction in the risk of on-/off-treatment all-cause mortality with FF/UMEC/VI versus UMEC/VI ( $P=0.042$ ; absolute risk reduction 0.83%).<sup>43</sup> This demonstrates the robustness of the reduction in all-cause mortality originally reported in IMPACT. These findings are now also supported by those from the ETHOS study, in which BUD 320 µg SITT reduced the risk of on-/off-treatment all-cause mortality by 46% versus FM/GLY (absolute risk reduction: 1.0%; Table 5). There was no reduction in all-cause mortality risk with BUD 160 µg SITT versus either dual-therapy comparator arms (Table 5). The consistency of effect on severe exacerbation and all-cause mortality observed in IMPACT with FF/UMEC/VI versus UMEC/VI was not seen in ETHOS, with BUD 320 µg SITT not leading to a statistically significant reduction in severe exacerbations compared with FM/GLY; it is the severe exacerbations

**Table 5** Severe Exacerbations and All-Cause Mortality in the TRIBUTE, ETHOS, and IMPACT Trials

Study arms	TRIBUTE <sup>23</sup>			ETHOS <sup>24</sup>			IMPACT <sup>22,89</sup>		
	BDP/FM/GLY BID (N=764)	IND/GLY QD (N=768)	BUD (320)/GLY/FM BID (N=2137)	BUD (160)/GLY/FM BID (N=2121)	FM/GLY BID (N=2120)	BUD/FM BID (N=2131)	FF/UMECMI QD (N=4151)	FF/MI QD (N=4134)	UMECMI QD (N=2070)
<b>On-treatment severe exacerbations</b>									
Rate, per year	0.07	0.09	0.13	0.14	0.15	0.16	0.13	0.15	0.19
Rate ratio (95% CI), SITT vs dual therapy	–	0.787 (0.551, 1.125), P=0.189	–	–	BUD 320 µg SITT: 0.84 (0.69, 1.03), P=0.09 BUD 160 µg SITT: 0.88 (0.72, 1.08), P-value not reported	BUD 320 µg SITT: 0.80 (0.66, 0.97), P=0.02 BUD 160 µg SITT: 0.83 (0.69, 1.01), P-value not reported	–	0.87 (0.76, 1.01), P=0.06	0.66 (0.56, 0.78), P<0.001
<b>On-/off-treatment death from any cause<sup>a</sup></b>									
Deaths, n (%)	16 (2.09%) <sup>b</sup>	21 (2.73%) <sup>b</sup>	28 (1.31%)	39 (1.84%)	49 (2.31%)	34 (1.60%)	89 (2.14%)	97 (2.35%)	60 (2.90%)
Relative risk reduction, SITT vs dual therapy: HR (95% CI)	–	NR	–	–	BUD 320 µg SITT: 0.54 (0.34, 0.87) <sup>c</sup> BUD 160 µg SITT: 0.79 (0.52, 1.20)	BUD 320 µg SITT: 0.78 (0.47, 1.30) BUD 160 µg SITT: 1.13 (0.72, 1.80)	–	0.90 (0.67, 1.20), P=0.458	0.71 (0.51, 0.99), P=0.043
Absolute risk difference, SITT vs dual therapy	–	0.64% <sup>b</sup>	–	–	BUD 320 µg SITT: 1.00% BUD 160 µg SITT: 0.47%	BUD 320 µg SITT: 0.29% BUD 160 µg SITT: –0.24%	–	0.21%	0.76%

**Notes:** Data are over 52 weeks in the ITT population, unless otherwise indicated. <sup>a</sup>ETHOS: analysis performed with the use of a treatment policy estimand, which included all observed data regardless of whether patients continued to receive their assigned treatment; <sup>24</sup>IMPACT: on- and off-treatment deaths included all observed data regardless of whether patients continued to receive their assigned treatment and are those which occurred between study treatment start date and 7 days after study treatment stop date (inclusive) for study treatment completers or up to the projected Week 52 date + 7 days for patients who prematurely discontinued study treatment; <sup>89</sup>AEs leading to a fatal outcome (safety population); <sup>c</sup>no statistical inferences can be made due to hierarchy broken on severe exacerbations.

**Abbreviations:** BDP, beclomethasone dipropionate; BUD, budesonide; CI, confidence interval; FF, fluticasone furoate; FM, formoterol; GLY, glycopyrronium; HR, hazard ratio; IND, indacaterol; NR, not reported; SITT, single-inhaler triple therapy; UMEC, umecidinium; Vi, vilanterol.



**Figure 2** All-cause mortality benefits with SITT are similar to, or better than, smoking cessation and cardioprotective treatments. <sup>a</sup>Pooled analysis of AEs leading to a fatal outcome (safety population); <sup>b</sup>on- and off-treatment deaths in post hoc analysis with additional vital status follow-up (vital status available for 99.6% of patients at nominal Week 52); <sup>c</sup>analysis included all observed data regardless of whether patients continued to receive their assigned treatment.

**Abbreviations:** BDP, beclomethasone dipropionate; BUD, budesonide; FF, fluticasone furoate; FM, formoterol; GLY, glycopyrronium; ICS, inhaled corticosteroid; IND, indacaterol; SITT, single-inhaler triple therapy; UMEC, umeclidinium; VI, vilanterol. The graph has been independently created from the original data.

leading to hospitalization that increase the risk of mortality.<sup>11,40</sup> Both IMPACT and ETHOS provide supporting evidence of the role of ICS in reducing all-cause mortality risk for patients with symptomatic COPD at high risk of exacerbations. The absolute risk reductions, while apparently small, are similar to, or better than, those seen in studies of smoking cessation or cardioprotective treatments (Figure 2).<sup>44–48</sup>

## Benefit versus Risk with SITT

In 2016, the EMA directed the PRAC to evaluate the benefit/risk balance of ICS-containing medicinal products for the treatment of patients with COPD. The PRAC concluded that while patients with COPD treated with ICS are at increased risk of pneumonia (an established risk associated with ICS use) the benefits of ICS continue to outweigh their risk.<sup>33</sup> Furthermore, there was no conclusive evidence of differences in this risk for different ICS-containing products (BDP, BUD, FF, FP or flunisolide).

Exacerbation history is one of the significant driving factors for pneumonia risk (Figure 1),<sup>49</sup> and this may be a factor in the differential incidences of pneumonia observed in the TRILOGY, KRONOS, FULFIL, TRIBUTE, ETHOS, and IMPACT trials.<sup>20–25</sup> Principal

eligibility criteria in these studies (Table 1) were largely similar: patients were 40 years or older, current or former smokers and had symptomatic COPD (COPD Assessment Test [CAT] score  $\geq 10$ ).<sup>20–25</sup> However, there were substantial differences in the exacerbation history of patients. At baseline, 74% of patients randomized in KRONOS and 35% in FULFIL had no exacerbations in the preceding year (Table 2). In contrast, enrollment criteria meant that <1% of the study population in both ETHOS and IMPACT had no exacerbations in the preceding year (43% and 45% had one, and 57% and 55% had  $\geq 2$  exacerbations, respectively; Table 2). In TRIBUTE, 81% of patients had experienced one exacerbation in the preceding year, with 19% experiencing  $\geq 2$  exacerbations (Table 2).

There were also differences in other characteristics at baseline, such as patients' prior receipt of ICS-containing triple therapy and lung function status (FEV<sub>1%</sub> predicted) (Table 2). It is worth noting that some of these differences relate to patients' characteristics that may influence the risk of pneumonia events.<sup>31</sup> Other notable differences between the studies included the definition and assessment methods used to capture AEs such as pneumonia (Table 4). The absolute rate of pneumonia thus differs between study

populations and definition criteria used (including the use or not of independent adjudication) but, in general, ICS approximately doubles the risk of pneumonia compared with non-ICS-containing regimens, as evidenced in multiple studies of SITT<sup>22,24,50</sup> and ICS/LABA.<sup>41,42,51–57</sup> Overall, baseline characteristics of patient populations are a key consideration for discussions about both efficacy and safety to aid clinicians in their treatment decision-making.

Tighter monitoring of the collection of safety data and differences in the definitions, method of assessment and independent adjudication of events, such as pneumonia, may influence the safety profile reported in different studies. The use in trials of broader definitions of pneumonia that do not rely on independent adjudication is more representative of routine clinical practice. Even so, pneumonia is a heterogeneous event with considerable clinical overlap with COPD exacerbations.<sup>58</sup> Differentiating between these two events poses significant challenges.<sup>58–61</sup> Both hospitalization due to severe exacerbations and pneumonia have a profound impact on patient outcomes, supporting the idea that clinical trials should evaluate these events together as a composite outcome of hospitalized respiratory events, as recently reported for the IMPACT trial.<sup>62</sup> In that trial, triple therapy with FF/UMEC/VI resulted in a significant 17% reduction in the risk of a severe exacerbation or hospitalized pneumonia compared with UMEC/VI ( $P=0.011$ ).<sup>62</sup> Ultimately, the key is to identify patients with COPD who will have a favorable benefit/risk ratio with triple therapy.

## ICS Responsiveness and Eosinophils

Identifying which patients are most likely to respond to ICS (and other treatments) is important to maximize the benefit/risk ratio and move toward a personalized medicine approach for COPD.<sup>63</sup> A recent post hoc analysis of three RCTs reported that only smoking history and blood eosinophil count were independent predictors of response to ICS (BUD/FM vs FM) in patients with severe or very severe COPD and a history of exacerbations.<sup>63</sup> This analysis showed that the relationship between blood eosinophil count and likely response to ICS is a continuum and not dichotomous.<sup>63</sup> An analysis of data from the IMPACT trial also modelled the relationship between blood eosinophil count as a continuous variable and ICS effects.<sup>64</sup> Consistent with previous findings,<sup>63</sup> this analysis of IMPACT showed that the response to ICS-containing therapy was modulated by both blood eosinophil count

and smoking status.<sup>64</sup> The benefits of ICS-containing treatments in terms of reduction in rates of moderate/severe and severe exacerbations increased with increasing blood eosinophil counts.<sup>64</sup> This was seen for both FF/UMEC/VI and FF/VI compared with UMEC/VI,<sup>64</sup> indicating that the relationship between blood eosinophil count and exacerbation reduction is independent of background bronchodilation. This relationship was modulated by smoking status, with greater benefits seen in former versus current smokers at all blood eosinophil counts.<sup>64</sup> This post hoc analysis emphasizes the importance of smoking cessation, with the observation that current smokers with lower blood eosinophil count ( $<200$  cells/ $\mu\text{L}$ ) showed no benefit of SITT over LAMA/LABA, while benefits were seen across the blood eosinophil continuum in former smokers.<sup>64</sup>

The GOLD 2020 Report now includes therapeutic recommendations for blood eosinophil counts and advises that thresholds of  $<100$  cells/ $\mu\text{L}$  and  $\geq 300$  cells/ $\mu\text{L}$  can be used to identify patients with a low likelihood and the greatest likelihood of benefiting from ICS-containing therapies, respectively.<sup>3</sup> However, recent analyses highlight that blood eosinophil count should be viewed as a continuum and evaluated in the context of other risk factors for exacerbations, and cut-offs should not be regarded as explicit.<sup>63–65</sup>

It is important to note that these eosinophil data are from large studies and reported at mean treatment group level, and the implications of population-based findings at the individual patient level remain to be established.

## Implications for Patient Management

Current GOLD treatment recommendations advocate approaches to the treatment and management of COPD that aim to reduce symptom burden and risk of future exacerbations.<sup>3</sup> Following a review of a patient's response to treatment initiation, adjustments in pharmacological treatment may be needed. After checking inhaler technique and compliance, treatment can be escalated/de-escalated based on the presence of the predominant symptoms of breathlessness and exercise limitation, and the continued occurrence of exacerbations whilst on maintenance therapy. Any change in treatment should always be undertaken under close medical supervision and considering whether there is a lack of clinical benefit and/or presence of side effects. Patients with COPD and their doctors should be

alert for signs and symptoms of pneumonia, bearing in mind that the clinical features of pneumonia overlap with those of exacerbations of the underlying disease.<sup>33</sup> This fact necessitates a more detailed exploration of the overlap of hospitalized respiratory events in future COPD trials.

Studies indicate that most patients with COPD would benefit from optimal bronchodilation with a combination of a LAMA and a LABA. Dual LAMA/LABA therapy has demonstrated improvements in patient outcomes compared with either agent used alone, including in symptomatic patients at low exacerbation risk not using concurrent ICS and those naïve to COPD maintenance therapy.<sup>66–79</sup> For patients with high risk of exacerbations and those who remain symptomatic despite treatment with LAMA/LABA combination therapy, the additional use of ICS should be considered, informed by the use of biomarkers such as blood eosinophils in conjunction with other clinical factors. As COPD is a progressive disease, ICS withdrawal should only be considered if there are adverse effects that seem to outweigh potential benefits, with particular caution in patients with blood eosinophil counts  $\geq 300$  cells/ $\mu\text{L}$ , who are at greatest risk of experiencing a relapse of exacerbations.<sup>3</sup>

Inappropriate prescribing of triple therapy, or, in some cases, lack thereof when clinically indicated,<sup>18</sup> may in part be due to confusion among healthcare professionals given the increasing number of medications, combinations, and inhaler devices available.<sup>80</sup>

Severe exacerbations resulting in hospitalization are key events for patients, with profound clinical implications. These include accelerated lung function decline, worsening of health-related quality of life, increased comorbidities, and significantly increased mortality.<sup>9–11</sup> Estimates suggest a survival rate of less than 50% at 5 years after hospitalization from a severe exacerbation.<sup>38</sup> The importance of preventing exacerbation-related hospitalizations and mortality should therefore be at the forefront of treatment and management strategies and, from recent evidence, SITT has a key role in these strategies and for improving overall patient outcomes. As a key driver of COPD-related healthcare costs, reducing severe exacerbations is also essential for reducing the substantial socioeconomic burden associated with COPD.<sup>6,11,81</sup> More studies in the usual care setting are required to better document the benefits and potential harms of therapy in the wider COPD population and to determine whether patients in routine practice are achieving expected outcomes.

In the appropriate patients, SITT also has a potential role to play in terms of simplifying treatment regimens, thereby potentially improving treatment adherence and

patient outcomes. Until recently, triple therapy required the use of multiple inhalers, sometimes several times per day.<sup>80</sup> Compared with single-inhaler use, the use of multiple inhalers has been shown to be associated with poorer persistence and adherence to COPD medication, which could, in turn, lead to poor symptom control, higher healthcare utilization and costs, and reductions in health-related quality of life.<sup>82–85</sup> The randomized, Phase IV effectiveness INTREPID study (NCT03467425) provides supporting evidence for the benefits of single- versus multiple-inhaler triple therapy.<sup>86</sup> The study evaluated SITT with FF/UMEC/VI versus multiple-inhaler triple therapy as a class over 24 weeks, in 3092 patients with symptomatic COPD and a history of exacerbations who were already receiving triple therapy or had a documented clinical indication for escalation from dual to triple therapy.<sup>86</sup> This study showed that, in usual clinical care, SITT with FF/UMEC/VI resulted in a significantly greater proportion of patients achieving clinically relevant health status improvements, and significantly improved lung function (in a subset of the overall population), compared with multiple-inhaler triple therapy, with a similar safety profile, including the incidence of pneumonia serious AEs.<sup>86</sup>

## Conclusions

Current evidence from recent RCTs of SITT compared with ICS/LABA and LAMA/LABA dual therapies confirms the benefits of SITT for symptomatic patients at high risk of exacerbations. The key benefits of SITT are significant reductions in exacerbations and hospitalizations, with encouraging data suggesting a reduction in all-cause mortality, which should be weighed against a higher incidence of study-reported pneumonia with ICS-containing treatment regimens. Beyond the benefits of reducing exacerbations, there are improvements in lung function and patient-reported outcomes. Treatment of COPD should follow an approach that weighs benefit versus risk at the individual patient level. Optimizing and simplifying treatment as early as possible in the course of the disease to prevent exacerbations, and their complications, and improve quality of life and adherence is critical for maximizing long-term benefits and patient outcomes. Avoiding therapies that are unlikely to be of benefit to an individual is also essential. Identifying and using the right treatment, for the right patient, at the right time should underpin the treatment and management of patients with COPD. If this is done, it will lead to better outcomes for patients.

## Abbreviations

AE, adverse event; BDP, beclometasone dipropionate; BUD, budesonide; COPD, chronic obstructive pulmonary disease; CAT, COPD Assessment Test; DPI, dry powder inhaler; EMA, European Medicines Agency; EPAR, European public assessment report; FF, fluticasone furoate; FEV<sub>1</sub>, forced expiratory volume in 1 second; FM, formoterol fumarate; GLY, glycopyrronium bromide; IND, indacaterol; ICS, inhaled corticosteroid; LAMA, long-acting muscarinic antagonist; LABA, long-acting  $\beta_2$ -agonist; PRAC, Pharmacovigilance Risk Assessment Committee; RCTs, randomized controlled trials; SITT, single-inhaler triple therapy; SGRQ, St George's Respiratory Questionnaire; UMEC, umeclidinium; VI, vilanterol.

## Acknowledgments

Editorial support (in the form of writing assistance, collating author comments, assembling tables/figures, grammatical editing, fact checking, and referencing) was provided by Carol A. Richter, PhD, of Gardiner-Caldwell Communications (Macclesfield, UK) and Chrystelle Rasamison, at Fishawack Indicia Ltd. part of Fishawack Health, UK, and was funded by GlaxoSmithKline (GSK).

## Author Contributions

All authors made a significant contribution to the work reported, whether the contribution was in the conception/design of this analysis, acquisition of the data, or analysis and interpretation of the data; took part in drafting, revising and critically reviewing the manuscript, and approved the final version of the manuscript before submission to an agreed upon journal. All authors agree to be accountable for all aspects of the work.

## Funding

Editorial support (in the form of writing assistance, collating author comments, assembling tables/figures, grammatical editing, fact checking, and referencing) was provided by Carol A. Richter, PhD, of Gardiner-Caldwell Communications (Macclesfield, UK) and Chrystelle Rasamison, at Fishawack Indicia Ltd. part of Fishawack Health, UK, and was funded by GlaxoSmithKline (GSK).

## Disclosure

J. Bourbeau reports grants from CIHR and Canadian Respiratory Research Network (CRRN), Foundation of the McGill University Health Center, Aerocrine, AstraZeneca,

Boehringer Ingelheim, Grifols, GSK, Novartis, and Trudell; personal conference and advisory board fees from Canadian Thoracic Society, CHEST, Astra Zeneca, Boehringer Ingelheim, Grifols, GSK, Novartis, and Trudell. M. Bafadhel reports grants from AstraZeneca; advisory board attendance for AstraZeneca, Chiesi, Boehringer Ingelheim, and GSK; attendance at educational meetings facilitated by AstraZeneca, Chiesi, and Boehringer Ingelheim; and scientific advisor for ProAxis and AlbusHealth. C. Compton, P.W. Jones, N.C. Barnes, D.A. Lipson, V. Di Boscio, and G. Weiss are employees of GSK and hold stocks and shares in GSK. N. Martin was an employee of GSK at the time the study was conducted. D.M.G. Halpin has received personal fees from AstraZeneca, Boehringer Ingelheim, Chiesi, GSK, Novartis, Pfizer, and Sanofi and non-financial support from Boehringer Ingelheim and Novartis. The authors report no other conflicts of interest in this work.

## References

1. World Health Organization. Health statistics and information systems: projections of mortality and causes of death, 2016 to 2060; 2016. Available from: [https://www.who.int/healthinfo/global\\_burden\\_disease/projections/en/](https://www.who.int/healthinfo/global_burden_disease/projections/en/). Accessed February 11, 2021.
2. Fletcher MJ, Upton J, Taylor-Fishwick J, et al. COPD uncovered: an international survey on the impact of chronic obstructive pulmonary disease [COPD] on a working age population. *BMC Public Health*. 2011;11(1):612. doi:10.1186/1471-2458-11-612
3. Global Initiative for Chronic Obstructive Lung Disease (GOLD). Global Strategy for the Diagnosis, Management, and Prevention of Chronic Obstructive Pulmonary Disease. 2020 Report. 2020; Available from: <https://goldcopd.org/>. Accessed February 11, 2021.
4. Guarascio AJ, Ray SM, Finch CK, Self TH. The clinical and economic burden of chronic obstructive pulmonary disease in the USA.. *Clinicoecon Outcomes Res*. 2013;5:235–245. doi:10.2147/CEOR.S34321
5. Miller JD, Foster T, Boulanger L, et al. Direct costs of COPD in the U.S.: an analysis of Medical Expenditure Panel Survey (MEPS) data. *COPD*. 2005;2(3):311–318.
6. Miravittles M, Murio C, Guerrero T, Gisbert R. EPOC DSGDs AyFel. Pharmacoeconomic evaluation of acute exacerbations of chronic bronchitis and COPD. *Chest*. 2002;121(5):1449–1455.
7. Strassels SA, Smith DH, Sullivan SD, Mahajan PS. The costs of treating COPD in the United States. *Chest*. 2001;119(2):344–352.
8. Anees UR, Ahmad Hassali MA, Muhammad SA, et al. The economic burden of chronic obstructive pulmonary disease (COPD) in the USA, Europe, and Asia: results from a systematic review of the literature. *Expert Rev Pharmacoecon Outcomes Res*. 2019:1–12.
9. Chenna PR, Mannino DM. Outcomes of severe COPD exacerbations requiring hospitalization. *Semin Respir Crit Care Med*. 2010;31(3):286–294.
10. Halpin DM, Decramer M, Celli C, Kesten S, Liu L, Tashkin DP. Exacerbation frequency and course of COPD. *Int J Chron Obstruct Pulmon Dis*. 2012;7:653–661. doi:10.2147/COPD.S34186
11. Halpin DM, Miravittles M, Metzdorf N, Celli B. Impact and prevention of severe exacerbations of COPD: a review of the evidence. *Int J Chron Obstruct Pulmon Dis*. 2017;12:2891–2908. doi:10.2147/COPD.S139470



12. Brusselle G, Price D, Gruffydd-Jones K, et al. The inevitable drift to triple therapy in COPD: an analysis of prescribing pathways in the UK. *Int J Chron Obstruct Pulmon Dis.* 2015;10:2207–2217. doi:10.2147/COPD.S91694
13. Chalmers JD, Tebbboth A, Gayle A, Ternouth A, Ramscar N. Determinants of initial inhaled corticosteroid use in patients with GOLD A/B COPD: a retrospective study of UK general practice. *NPJ Prim Care Respir Med.* 2017;27(1):43. doi:10.1038/s41533-017-0040-z
14. Fitch K, Iwasaki K, Pyenson B, Plauschinat C, Zhang J. Variation in adherence with Global Initiative for Chronic Obstructive Lung Disease (GOLD) drug therapy guidelines: a retrospective actuarial claims data analysis. *Curr Med Res Opin.* 2011;27(7):1425–1429. doi:10.1185/03007995.2011.583230
15. Gruffydd-Jones K, Brusselle G, Jones R, et al. Changes in initial COPD treatment choice over time and factors influencing prescribing decisions in UK primary care: a real-world study. *NPJ Prim Care Respir Med.* 2016;26(1):16002. doi:10.1038/npjperm.2016.2
16. Hurst JR, Dilleen M, Morris K, Hills S, Emir B, Jones R. Factors influencing treatment escalation from long-acting muscarinic antagonist monotherapy to triple therapy in patients with COPD: a retrospective THIN-database analysis. *Int J Chron Obstruct Pulmon Dis.* 2018;13:781–792. doi:10.2147/COPD.S153655
17. Price D, West D, Brusselle G, et al. Management of COPD in the UK primary-care setting: an analysis of real-life prescribing patterns. *Int J Chron Obstruct Pulmon Dis.* 2014;9:889–904. doi:10.2147/COPD.S62750
18. Halpin DMG, de Jong HJL, Carter V, Skinner D, Price D. Distribution, Temporal Stability and Appropriateness of Therapy of Patients with COPD in the UK in Relation to GOLD 2019. *EClinicalMedicine.* 2019;14:32–41. doi:10.1016/j.eclinm.2019.07.003
19. Han MK, Martinez CH, Au DH, et al. Meeting the challenge of COPD care delivery in the USA: a multiprovider perspective. *Lancet Respir Med.* 2016;4(6):473–526.
20. Ferguson GT, Rabe KF, Martinez FJ, et al. Triple therapy with budesonide/glycopyrrolate/formoterol fumarate with co-suspension delivery technology versus dual therapies in chronic obstructive pulmonary disease (KRONOS): a double-blind, parallel-group, multi-centre, Phase 3 randomised controlled trial. *Lancet Respir Med.* 2018;6(10):747–758.
21. Lipson DA, Barnacle H, Birk R, et al. fulfil trial: once-daily triple therapy for patients with chronic obstructive pulmonary disease. *Am J Respir Crit Care Med.* 2017;196(4):438–446. doi:10.1164/rccm.201703-0449OC
22. Lipson DA, Barnhart F, Brealey N, et al. Once-daily single-inhaler triple versus dual therapy in patients with COPD. *N Engl J Med.* 2018;378(18):1671–1680. doi:10.1056/NEJMoa1713901
23. Papi A, Vestbo J, Fabbri L, et al. Extrafine inhaled triple therapy versus dual bronchodilator therapy in chronic obstructive pulmonary disease (TRIBUTE): a double-blind, parallel group, randomised controlled trial. *Lancet.* 2018;391(10125):1076–1084. doi:10.1016/S0140-6736(18)30206-X
24. Rabe KF, Martinez FJ, Ferguson GT, et al. Triple Inhaled Therapy at Two Glucocorticoid Doses in Moderate-to-Very-Severe COPD. *N Engl J Med.* 2020;383(1):35–48. doi:10.1056/NEJMoa1916046
25. Singh D, Papi A, Corradi M, et al. Single inhaler triple therapy versus inhaled corticosteroid plus long-acting  $\beta_2$ -agonist therapy for chronic obstructive pulmonary disease (TRILOGY): a double-blind, parallel group, randomised controlled trial. *Lancet.* 2016;388(10048):963–973. doi:10.1016/S0140-6736(16)31354-X
26. Vestbo J, Fabbri L, Papi A, et al. Inhaled corticosteroid containing combinations and mortality in COPD. *Eur Respir J.* 2018;52(6):6. doi:10.1183/13993003.01230-2018
27. Agusti A, Fabbri LM, Singh D, et al. Inhaled corticosteroids in COPD: friend or foe? *Eur Respir J.* 2018;52(6):6. doi:10.1183/13993003.01219-2018
28. Lipworth B, Kuo CR, Jabbar S. Current appraisal of single inhaler triple therapy in COPD. *Int J Chron Obstruct Pulmon Dis.* 2018;13:3003–3009. doi:10.2147/COPD.S177333
29. Vanfleteren L, Fabbri LM, Papi A, Petruzzelli S, Celli B. Triple therapy (ICS/LABA/LAMA) in COPD: time for a reappraisal. *Int J Chron Obstruct Pulmon Dis.* 2018;13:3971–3981. doi:10.2147/COPD.S185975
30. Mammen MJ, Lloyd DR, Kumar S, et al. Triple therapy versus dual or monotherapy with long-acting bronchodilators for chronic obstructive pulmonary disease. a systematic review and meta-analysis. *Ann Am Thorac Soc.* 2020;17(10):1308–1318. doi:10.1513/AnnalsATS.202001-023OC
31. Hartley BF, Barnes NC, Lettis S, Compton CH, Papi A, Jones P. Risk factors for exacerbations and pneumonia in patients with chronic obstructive pulmonary disease: a pooled analysis. *Respir Res.* 2020;21(1):5. doi:10.1186/s12931-019-1262-0
32. Han MK, Criner GJ, Dransfield MT, et al. The effect of inhaled corticosteroid withdrawal and baseline inhaled treatment on exacerbations in the impact study. a randomized, double-blind, multicenter clinical trial. *Am J Respir Crit Care Med.* 2020;202(9):1237–1243. doi:10.1164/rccm.201912-2478OC
33. European Medicines Agency (EMA). Pharmacovigilance Risk Assessment Committee (PRAC), recommendation 2016. Inhaled corticosteroids (ICS) containing medicinal products indicated in the treatment of chronic obstructive pulmonary disease (COPD). 2016; Available from: <https://www.ema.europa.eu/medicines/human/referals/inhaled-corticosteroids-containing-medicinal-products-indicated-treatment-chronic-obstructive>. Accessed February 11, 2021.
34. European Medicines Agency (EMA). Committee for Medicinal Products for Human Use (CHMP), Assessment Report 2018. Trimbow International non-proprietary name: beclometasone dipropionate/formoterol fumarate dihydrate/glycopyrronium. Procedure No. EMEA/H/C/004257/II/0002. 2018; Available from: [https://www.ema.europa.eu/en/documents/variation-report/trimbow-h-c-4257-ii-0002-epar-assessment-report-variation\\_en.pdf](https://www.ema.europa.eu/en/documents/variation-report/trimbow-h-c-4257-ii-0002-epar-assessment-report-variation_en.pdf). Accessed February 11, 2021.
35. EU Clinical Trials Register. A multinational, multicentre, randomised, open-label, active-controlled, 26-week, 2-arm, parallel group study to evaluate the non-inferiority of fixed combination of beclometasone dipropionate plus formoterol fumarate plus glycopyrronium bromide administered via pMDI (CHF 5993) versus fixed combination of fluticasone furoate plus vilanterol administered via DPI (Relvar<sup>®</sup>) plus tiotropium bromide (Spiriva<sup>®</sup>) for the treatment of patients with chronic obstructive pulmonary disease. EudraCT number 2014-001487-35. 2018; Available from: <https://www.clinicaltrialsregister.eu/ctr-search/trial/2014-001487-35/results>. Accessed February 11, 2021.
36. Gershon AS, Guan J, Victor JC, Goldstein R, To T. Quantifying health services use for chronic obstructive pulmonary disease. *Am J Respir Crit Care Med.* 2013;187(6):596–601. doi:10.1164/rccm.201211-2044OC
37. Johannesdottir SA, Christiansen CF, Johansen MB, et al. Hospitalization with acute exacerbation of chronic obstructive pulmonary disease and associated health resource utilization: a population-based Danish cohort study. *J Med Econ.* 2013;16(7):897–906. doi:10.3111/13696998.2013.800525
38. Soler-Cataluna JJ. Severe acute exacerbations and mortality in patients with chronic obstructive pulmonary disease. *Thorax.* 2005;60(11):925–931. doi:10.1136/thx.2005.040527
39. Soler-Cataluna JJ, Martinez-Garcia M<sup>Á</sup>, Sanchez LS, Tordera MP, Sanchez PR. Severe exacerbations and BODE index: two independent risk factors for death in male COPD patients. *Respir Med.* 2009;103(5):692–699. doi:10.1016/j.rmed.2008.12.005
40. Rothnie KJ, Mullerova H, Smeeth L, Quint JK. Natural history of chronic obstructive pulmonary disease exacerbations in a general practice-based population with chronic obstructive pulmonary disease. *Am J Respir Crit Care Med.* 2018;198(4):464–471. doi:10.1164/rccm.201710-2029OC

41. Calverley PMA, Anderson JA, Celli B, et al. Salmeterol and fluticasone propionate and survival in chronic obstructive pulmonary disease. *N Engl J Med.* 2017;196(4):775–789. doi:10.1056/NEJMoa063070
42. Vestbo J, Anderson JA, Brook RD, et al. Fluticasone furoate and vilanterol and survival in chronic obstructive pulmonary disease with heightened cardiovascular risk (SUMMIT): a double-blind randomised controlled trial. *Lancet.* 2016;387(10030):1817–1826.
43. Lipson DA, Crim C, Criner GJ, et al. Reduction in all-cause mortality with fluticasone furoate/umeclidinium/vilanterol in patients with chronic obstructive pulmonary disease. *Am J Respir Crit Care Med.* 2020;201(12):1508–1516.
44. Randomised trial of cholesterol lowering in 4444 patients with coronary heart disease: the Scandinavian Simvastatin Survival Study (4S). *Lancet.* 1994;344(8934):1383–1389.
45. UK Prospective Diabetes Study (UKPDS) Group. Effect of intensive blood-glucose control with metformin on complications in overweight patients with type 2 diabetes (UKPDS 34). UK Prospective Diabetes Study (UKPDS) Group. *Lancet.* 1998;352(9131):854–865.
46. Anthonisen NR, Skeans MA, Wise RA, et al. The effects of a smoking cessation intervention on 14.5-year mortality: a randomized clinical trial. *Ann Intern Med.* 2005;142(4):233–239.
47. Yusuf S, Sleight P, et al.; Heart Outcomes Prevention Evaluation Study I. Effects of an angiotensin-converting-enzyme inhibitor, ramipril, on cardiovascular events in high-risk patients. *N Engl J Med.* 2000;342(3):145–153.
48. Heart Protection Study Collaborative G. MRC/BHF Heart Protection Study of cholesterol lowering with simvastatin in 20,536 high-risk individuals: a randomised placebo-controlled trial. *Lancet.* 2002;360(9326):7–22.
49. Williams NP, Coombs NA, Johnson MJ, et al. Seasonality, risk factors and burden of community-acquired pneumonia in COPD patients: a population database study using linked health care records. *Int J Chron Obstruct Pulmon Dis.* 2017;12:313–322.
50. Vestbo J, Papi A, Corradi M, et al. Single inhaler extrafine triple therapy versus long-acting muscarinic antagonist therapy for chronic obstructive pulmonary disease (TRINITY): a double-blind, parallel group, randomised controlled trial. *Lancet.* 2017;389(10082):1919–1929.
51. Dransfield MT, Bourbeau J, Jones PW, et al. Once-daily inhaled fluticasone furoate and vilanterol versus vilanterol only for prevention of exacerbations of COPD: two replicate double-blind, parallel-group, randomised controlled trials. *Lancet Respir Med.* 2013;1(3):210–223.
52. Papi A, Dokic D, Tzimas W, et al. Fluticasone propionate/formoterol for COPD management: a randomized controlled trial. *Int J Chron Obstruct Pulmon Dis.* 2017;12:1961–1971.
53. Sharafkhaneh A, Southard JG, Goldman M, Uryniak T, Martin UJ. Effect of budesonide/formoterol pMDI on COPD exacerbations: a double-blind, randomized study. *Respir Med.* 2012;106(2):257–268.
54. Vogelmeier C, Paggiaro PL, Dorca J, et al. Efficacy and safety of aclidinium/formoterol versus salmeterol/fluticasone: a phase 3 COPD study. *Eur Respir J.* 2016;48(4):1030–1039.
55. Wedzicha JA, Banerji D, Chapman KR, et al. Indacaterol-Glycopyrronium versus Salmeterol-Fluticasone for COPD. *N Engl J Med.* 2016;374(23):2222–2234.
56. Wedzicha JA, Calverley PM, Seemungal TA, et al. The prevention of chronic obstructive pulmonary disease exacerbations by salmeterol/fluticasone propionate or tiotropium bromide. *Am J Respir Crit Care Med.* 2008;177(1):19–26.
57. Wedzicha JA, Singh D, Vestbo J, et al. Extrafine beclomethasone/formoterol in severe COPD patients with history of exacerbations. *Respir Med.* 2014;108(8):1153–1162.
58. Williams NP, Ostridge K, Devaster JM, et al. Impact of radiologically stratified exacerbations: insights into pneumonia aetiology in COPD. *Respir Res.* 2018;19(1):143.
59. Hurst JR. Consolidation and Exacerbation of COPD. *Med Sci.* 2018;6:2.
60. Restrepo MI, Sibila O, Anzueto A. Pneumonia in Patients with Chronic Obstructive Pulmonary Disease. *Tuberc Respir Dis.* 2018;81(3):187–197.
61. Saleh A, Lopez-Campos JL, Hartl S. The effect of incidental consolidation on management and outcomes in COPD Exacerbations: data from the European COPD Audit. *PLoS One.* 2015;10(7):e0134004.
62. Dransfield M, Crim C, Criner G, et al. Risk of exacerbation and pneumonia with single inhaler triple therapy versus dual therapy in IMPACT. *Eur Respir J.* 2018;52(suppl62):PA1991.
63. Bafadhel M, Peterson S, De Blas MA, et al. Predictors of exacerbation risk and response to budesonide in patients with chronic obstructive pulmonary disease: a post-hoc analysis of three randomised trials. *Lancet Respir Med.* 2018;6(2):117–126.
64. Pascoe S, Barnes N, Brusselle G, et al. Blood eosinophils and treatment response with triple and dual combination therapy in chronic obstructive pulmonary disease: analysis of the IMPACT trial. *Lancet Respir Med.* 2019;7(9):745–756.
65. Pascoe S, Pavord I, Hinds D, Locantore N, Barnes N. The association between blood eosinophils and risk and treatment outcome in COPD is not dichotomised. *Lancet Respir Med.* 2018a;6(5):e18.
66. Bateman ED, Chapman KR, Singh D, et al. Aclidinium bromide and formoterol fumarate as a fixed-dose combination in COPD: pooled analysis of symptoms and exacerbations from two six-month, multicentre, randomised studies (ACLIFORM and AUGMENT). *Respir Res.* 2015;16:92.
67. Cazzola M, Molimard M. The scientific rationale for combining long-acting beta2-agonists and muscarinic antagonists in COPD. *Pulm Pharmacol Ther.* 2010;23(4):257–267.
68. Farne HA, Cates CJ. Long-acting beta2-agonist in addition to tiotropium versus either tiotropium or long-acting beta2-agonist alone for chronic obstructive pulmonary disease. *Cochrane Database Syst Rev.* 2015;10:CD008989.
69. Mahler DA, Decramer M, D'Urzo A, et al. Dual bronchodilation with QVA149 reduces patient-reported dyspnoea in COPD: the BLAZE study. *Eur Respir J.* 2014;43(6):1599–1609.
70. Singh D, Ferguson GT, Bolitschek J, et al. Tiotropium + olodaterol shows clinically meaningful improvements in quality of life. *Respir Med.* 2015;109(10):1312–1319.
71. van der Molen T, Cazzola M. Beyond lung function in COPD management: effectiveness of LABA/LAMA combination therapy on patient-centred outcomes. *Prim Care Respir J.* 2012;21(1):101–108.
72. Wilkie M, Finch S, Schembri S. Inhaled Corticosteroids for chronic obstructive pulmonary disease—the shifting treatment paradigm. *COPD.* 2015;12(5):582–590.
73. Bjermer L, Kerwin E, Maltais F, et al. Comparative efficacy and safety of umeclidinium/vilanterol, umeclidinium and salmeterol in symptomatic maintenance-naïve and maintenance-treated chronic obstructive pulmonary disease: a prospective analysis of the EMAX trial. *Am J Respir Crit Care Med.* 2019;199:A3317.
74. Maltais F, Bjermer L, Kerwin EM, et al. Efficacy of umeclidinium/vilanterol versus umeclidinium and salmeterol monotherapies in symptomatic patients with COPD not receiving inhaled corticosteroids: the EMAX randomised trial. *Respir Res.* 2019;20(1):238.
75. Decramer M, Anzueto A, Kerwin E, et al. Efficacy and safety of umeclidinium plus vilanterol versus tiotropium, vilanterol, or umeclidinium monotherapies over 24 weeks in patients with chronic obstructive pulmonary disease: results from two multicentre, blinded, randomised controlled trials. *Lancet Respir Med.* 2014;2(6):472–486.
76. Oba Y, Sarva ST, Dias S. Efficacy and safety of long-acting beta-agonist/long-acting muscarinic antagonist combinations in COPD: a network meta-analysis. *Thorax.* 2016;71(1):15–25.

77. Calzetta L, Rogliani P, Matera MG, Cazzola M, Systematic Review A. With meta-analysis of dual bronchodilation with LAMA/LABA for the Treatment of Stable COPD. *Chest*. 2016;149(5):1181–1196.
78. Maleki-Yazdi MR, Singh D, Anzueto A, Tombs L, Fahy WA, Assessing Short-term NI. Deterioration in maintenance-naive patients with COPD receiving umeclidinium/vilanterol and tiotropium: a pooled analysis of three randomized trials. *Adv Ther*. 2017;33(12):2188–2199.
79. Singh D, Gaga M, Schmidt O, et al. Effects of tiotropium + olodaterol versus tiotropium or placebo by COPD disease severity and previous treatment history in the OTEMTO(R) studies. *Respir Res*. 2016;17(1):73.
80. Gaduzo S, McGovern V, Roberts J, Scullion JE, Singh D. When to use single-inhaler triple therapy in COPD: a practical approach for primary care health care professionals. *Int J Chron Obstruct Pulmon Dis*. 2019;14:391–401.
81. Perera PN, Armstrong EP, Sherrill DL, Skrepnek GH. Acute exacerbations of COPD in the United States: inpatient burden and predictors of costs and mortality. *COPD*. 2012;9(2):131–141.
82. Yu AP, Guerin A, Ponce de Leon D, et al. Therapy persistence and adherence in patients with chronic obstructive pulmonary disease: multiple versus single long-acting maintenance inhalers. *J Med Econ*. 2011;14(4):486–496.
83. Zhang S, King D, Rosen VM, Ismaila AS. Impact of single combination inhaler versus multiple inhalers to deliver the same medications for patients with asthma or COPD: a systematic literature review. *Int J Chron Obstruct Pulmon Dis*. 2020;15:417–438.
84. Makela MJ, Backer V, Hedegaard M, Larsson K. Adherence to inhaled therapies, health outcomes and costs in patients with asthma and COPD. *Respir Med*. 2013;107(10):1481–1490.
85. Lopez-Campos JL, Quintana Gallego E, Carrasco Hernandez L. Status of and strategies for improving adherence to COPD treatment. *Int J Chron Obstruct Pulmon Dis*. 2019;14:1503–1515.
86. Halpin DMG, Worsley S, Ismaila AS, et al. INTREPID: clinical effectiveness of once-daily single-inhaler fluticasone furoate/umeclidinium/vilanterol versus multiple-inhaler triple therapy in usual clinical practice. *Am J Respir Crit Care Med*. 2020;201:A4313.
87. GlaxoSmithKline. A comparison study between the fixed dose triple combination of fluticasone furoate/umeclidinium/vilanterol trifenate (FF/UMEC/VI) with budesonide/formoterol in subjects with chronic obstructive pulmonary disease (COPD) – Study 116853 (NCT02345161). Available from: <https://www.gsk-studyregister.com/en/trial-details/?id=116853>. Accessed February 11, 2021.
88. Rabe KF, Martinez FJ, Singh D, et al. Improvements in lung function with budesonide/glycopyrrolate/formoterol fumarate metered dose inhaler (BGF MDI) versus dual therapies in patients with COPD: a sub-study of the ETHOS trial. American Thoracic Society - 116th International Conference; 2020.
89. GlaxoSmithKline. A study comparing the efficacy, safety and tolerability of fixed dose combination (FDC) of FF/UMEC/VI with the FDC of FF/VI and UMEC/VI; administered once-daily via a dry powder inhaler (DPI) in subjects with chronic obstructive pulmonary disease (COPD) – Study 116855 (NCT02164513). Available from: <https://www.gsk-studyregister.com/en/trial-details/?id=116855>. Accessed February 11, 2021.
90. Rabe KF, Martinez FJ, Ferguson GT, et al. A Phase III study of triple therapy with budesonide/glycopyrrolate/formoterol fumarate metered dose inhaler 320/18/9.6µg and 160/18/9.6µg using co-suspension delivery technology in moderate-to-very severe COPD: the ETHOS study protocol. *Respir Med*. 2019;158:59–66.

## International Journal of Chronic Obstructive Pulmonary Disease

Dovepress

### Publish your work in this journal

The International Journal of COPD is an international, peer-reviewed journal of therapeutics and pharmacology focusing on concise rapid reporting of clinical studies and reviews in COPD. Special focus is given to the pathophysiological processes underlying the disease, intervention programs, patient focused education, and self management

protocols. This journal is indexed on PubMed Central, MedLine and CAS. The manuscript management system is completely online and includes a very quick and fair peer-review system, which is all easy to use. Visit <http://www.dovepress.com/testimonials.php> to read real quotes from published authors.

Submit your manuscript here: <https://www.dovepress.com/international-journal-of-chronic-obstructive-pulmonary-disease-journal>