

# Baseline Level and Reduction in PaCO<sub>2</sub> are Associated with the Treatment Effect of Long-Term Home Noninvasive Positive Pressure Ventilation in Stable Hypercapnic Patients with COPD: A Systematic Review and Meta-Analysis of Randomized Controlled Trials

Zhipeng Wu<sup>1,\*</sup>, Zujin Luo<sup>2,\*</sup>, Zengtao Luo<sup>2</sup>, Jingyi Ge<sup>3</sup>, Jiawei Jin<sup>4</sup>, Zhixin Cao<sup>2</sup>, Yingmin Ma<sup>1</sup>

<sup>1</sup>Department of Respiratory and Critical Care Medicine, Beijing Youan Hospital, Capital Medical University, Beijing, People's Republic of China;

<sup>2</sup>Department of Respiratory and Critical Care Medicine, Beijing Chaoyang Hospital, Capital Medical University, Beijing, People's Republic of China;

<sup>3</sup>Department of Respiratory Medicine, Beijing Rehabilitation Hospital, Capital Medical University, Beijing, People's Republic of China; <sup>4</sup>The Clinical Research Center, Beijing Chaoyang Hospital, Capital Medical University, Beijing, People's Republic of China

\*These authors contributed equally to this work

Correspondence: Yingmin Ma, Department of Respiratory and Critical Care Medicine, Beijing Youan Hospital, Capital Medical University, Beijing, People's Republic of China, Tel +86 10-13501185982, Email mayingmin@ccmu.edu.cn

**Purpose:** The evidence of long-term home noninvasive positive pressure ventilation (LTHNIPPV) in patients with stable hypercapnic chronic obstructive pulmonary disease (COPD) is controversial. In this meta-analysis study, we sought to establish whether a baseline level and reduction in partial pressure of arterial carbon dioxide (PaCO<sub>2</sub>) were associated with the treatment effect of LTHNIPPV in these patients.

**Patients and Methods:** Six electronic databases were comprehensively searched from January 1980 until June 2020. Randomized clinical trials (RCTs) comparing LTHNIPPV with control treatment were included. Two authors independently extracted data, assessed the study quality, and used the GRADE approach to evaluate evidence quality. The main outcome was mortality.

**Results:** Nineteen studies involving 1482 patients (LTHNIPPV, n = 730; control, n = 752) were included. LTHNIPPV significantly reduced mortality (relative risk [RR] = 0.76; 95% confidence interval [CI]: 0.61–0.95; p = 0.02; I<sup>2</sup> = 14%), the frequency of hospital admissions, PaCO<sub>2</sub>, and improved partial pressure of oxygen (PaO<sub>2</sub>) compared to control treatment. LTHNIPPV also relieved dyspnea and improved exercise capacity and health-related quality of life (HRQL) but showed no significant benefit for improving the forced expiratory volume in one second in predicted (FEV<sub>1</sub>% pred). Subgroup analysis revealed that the baseline level and reduction in PaCO<sub>2</sub> were associated with decreased mortality (baseline PaCO<sub>2</sub> ≥ 55 mmHg RR = 0.69, P = 0.02; vs baseline PaCO<sub>2</sub> < 55 mmHg RR = 0.87, P = 0.32; and higher dPaCO<sub>2</sub> RR = 0.42, P < 0.0001; vs lower dPaCO<sub>2</sub> RR = 0.91, P = 0.38).

**Conclusion:** LTHNIPPV significantly reduced mortality. The baseline level and reduction in PaCO<sub>2</sub> were associated with the treatment effect of LTHNIPPV in patients with stable hypercapnic COPD. Large-scale, multicenter RCTs are needed to confirm our results.

**Keywords:** COPD, long-term home noninvasive positive pressure ventilation, mortality, meta-analysis study, RCTs, stable hypercapnic

## Introduction

Chronic obstructive pulmonary disease (COPD) is a common disease with nonreversible airflow limitation and persistent respiratory symptoms, such as cough. COPD is a primary cause of morbidity and mortality worldwide and represents a great social and economic burden for humans. <sup>1–3</sup>

Noninvasive positive pressure ventilation (NIPPV) is recommended as the first ventilation method for patients with COPD with acute exacerbation, but for stable patients with COPD, the evidence is still controversial.<sup>4,5</sup> The latest GOLD guideline (2019) reported that the evidence for regular use of long-term home NIPPV (LTHNIPPV) in stable COPD patients remains insufficient. However, the guideline also emphasized that LTHNIPPV can probably be used in patients with daytime hypercapnia.<sup>1</sup> Studies have found that patients with stable hypercapnia have poor prognosis compared to those with normocapnia and reversible hypercapnic COPD.<sup>6–11</sup>

Randomized clinical trials (RCTs) comparing LTHNIPPV with control treatment in patients with stable hypercapnic COPD have been conducted.<sup>12–18</sup> Köhnlein et al<sup>13</sup> found that LTHNIPPV could reduce mortality, but Murphy et al<sup>18</sup> found that the mortality rate was not significantly different between the LTHNIPPV group and the control group. Previous meta-analysis studies combined these RCTs and showed that LTHNIPPV reduced PaCO<sub>2</sub> but did not decrease all-cause mortality or improve PaO<sub>2</sub> compared to control treatment for patients with stable hypercapnic COPD.<sup>19–22</sup> The most recent meta-analysis study combined RCTs and observational studies and found that LTHNIPPV reduced all-cause mortality compared to control treatment for patients with stable hypercapnic COPD.<sup>23</sup> However, it remains unclear whether baseline level and reduction in PaCO<sub>2</sub> are associated with the treatment effect of NIPPV on reducing mortality.

Therefore, we performed a comprehensive systematic meta-analysis study comparing NIPPV with control treatment for patients with stable hypercapnic COPD. The analysis had no language restrictions and included more RCTs than previous meta-analysis studies.<sup>19–23</sup> The main outcome was all-cause mortality, and the secondary outcomes included frequency of hospital admissions, gas exchange, FEV<sub>1</sub>% pred, 6-min walk distance (6MWD), dyspnea, and health-related quality of life (HRQL). Subgroup analysis based on the baseline level of PaCO<sub>2</sub> and the degree of dPaCO<sub>2</sub> was performed to establish whether the baseline level of PaCO<sub>2</sub> and reduction in PaCO<sub>2</sub> were associated with treatment effect of LTHNIPPV in patients with stable hypercapnic COPD.

## Materials and Methods

We conducted this meta-analysis study in accordance with the Preferred Reporting Items for Systematic Reviews and Meta-Analyses (PRISMA) statement<sup>24</sup> and the Cochrane Handbook.<sup>25</sup>

### Literature Search Strategy

We conducted a comprehensive search of six databases: PubMed, EMBASE, Cochrane Central Register, China National Knowledge Infrastructure (CNKI), WANFANG DATA, and Wei Pu (China Science and Technology Journal Database). The publication time was limited from January 01, 1980, to June 30, 2020, and this study had no language restrictions. Three items were included in the search terms and combined with the Boolean operator “AND”: Patients (including “nasal ventilat\*” or “COPD,” “Chronic Obstructive Pulmonary Disease” or “COAD”); intervention (including “mechanical ventilat\*” or “noninvasive ventilat\*” or “noninvasive ventilat\*”); and study design (including RCTs). The detailed search strategies of all databases are presented in [Appendix 1](#). The references of each included study were also searched for additional papers.

### Inclusion/Exclusion Criteria and Study Selection

Types of studies: RCTs were included, and any other type of study was excluded.

Patients: Adults > 18 years old, diagnosed with moderate to severe COPD according to GOLD 2019, in a stable hypercapnic state.

Intervention: Patients in treatment groups underwent NIPPV treatment at least 4 h per day for > 3 months.

Predefined outcomes: All-cause mortality, exacerbation frequency, gas exchange, FEV<sub>1</sub>%predicted, 6MWD, dyspnea, and HRQL.

Two investigators (ZPW and ZJL) independently identified the title/abstract of each record that was eligible for further review, before retrieving the full text of the eligible studies. Subsequently, two reviewers independently read the full texts and decided which records to include. The two reviewers resolved any disagreements through consensus with a third investigator (YMM).

## Data Extraction, Quality Assessment, and Publication Bias

We designed a data form recommended by Cochrane to extract and record the relevant information of each study. The form included the author, study time, study type, study location, interventions, sample size, and outcomes. If there were any data or information unavailable, we contacted the corresponding authors by e-mail to request the data.

The bias risks of each study were assessed according to the Cochrane risk of bias tool implemented in RevMan 5.3 software.<sup>26</sup> Studies were assessed for seven domains as follows: selection bias, random sequence generation; selection bias, allocation concealment; performance bias, blinding of participants and personnel; detection bias, blinding of related outcomes assessment; attrition bias, incomplete outcome data; reporting bias, selective reporting; and other biases. Each study was graded as low, high, or unclear risk of bias.

Two reviewers (ZPW and ZJL) independently performed the data extraction and quality assessment; any disagreements were solved through discussion with a third investigator (YMM).

We used RevMan 5.3 software to generate Funnel plots to assess the publication bias. Funnel plot asymmetry was evaluated by The Egger regression test using Stata 15.1 (StataCorp LP, TX, USA).

## Quality of the Evidence

We used GRADE to judge the quality of evidence for outcomes. Five factors (risk of bias, indirectness, inconsistency, imprecision, and publication bias) were used to upgrade or downgrade the quality of evidence. The quality of evidence was defined as high, moderate, low, or very low using GRADE profiler 3.6.1.<sup>27–29</sup>

## Statistical Analysis

The Cochrane systematic review software Review Manager software (RevMan; Version 5.3.5) was used for all statistical analyses. The risk ratio (RR) and 95% confidence intervals (CIs) were calculated for dichotomous data, mortality, and exacerbation rates. The weighted mean difference (WMD) with 95% CIs was adopted for continuous variables, PaCO<sub>2</sub>, PaO<sub>2</sub>, FEV<sub>1</sub>%predicted, exercise capacity, dyspnea, and HRQL. RRs with 95% CIs were calculated using the Mantel-Haenszel method using a random-effects model. WMD with 95% CIs was estimated by inverse variance method using a random effects model. We used a weighted Mantel-Haenszel  $X^2$  and the  $I^2$  to test statistical heterogeneities; when  $P < 0.1$  and  $I^2 > 50\%$ , we regarded the heterogeneity of the study to be significant. If sufficient data were available, we conducted subgroup and sensitivity analyses to establish the source of heterogeneity. The interaction between subgroups was evaluated by the subgroup difference test described by Deeks et al. When  $P_{\text{interaction}} < 0.05$ , we considered that the difference was significant between subgroups and that there was a significant interaction between subgroups.

## Subgroup Analysis

We performed subgroup analysis based on baseline PaCO<sub>2</sub> level, degree of dPaCO<sub>2</sub>, whether PaCO<sub>2</sub> was decreased or increased in the control treatment group, prior screening time, and duration of follow-up. The higher baseline PaCO<sub>2</sub> subgroup included trials with patients with a mean PaCO<sub>2</sub>  $\geq 55$  mmHg at the beginning, while the baseline PaCO<sub>2</sub> lower subgroup included trials with patients with a mean  $45 \text{ mmHg} \leq \text{PaCO}_2 < 55 \text{ mmHg}$  at the beginning.

The definition of dPaCO<sub>2</sub> was as follows:

$$\text{dPaCO}_2 = (\text{baseline PaCO}_2 \text{ level of NIPPV group} - \text{endpoint PaCO}_2 \text{ level of NIPPV group}) - (\text{baseline PaCO}_2 \text{ level of control treatment group} - \text{endpoint PaCO}_2 \text{ level of control treatment group}).$$

As shown in the definition, dPaCO<sub>2</sub> could be a suitable index for two aspects: 1. the degree of change in PaCO<sub>2</sub> in the control treatment group, and 2. the treatment ability of NIPPV to reduce PaCO<sub>2</sub> compared to control treatment. For outcomes, we distributed the studies into two or three subgroups in high-to-low order.

## Results

A total of 1556 citations were identified by the electronic literature search: PubMed = 279, Embase = 585, Cochrane = 323, CNKI = 86, Wan Fang = 170, and Wei Pu = 113. Three articles were identified from reviewing the reference list. A total of 1559 records were included for initial screening; among them, 478 duplicates were removed, 758 were

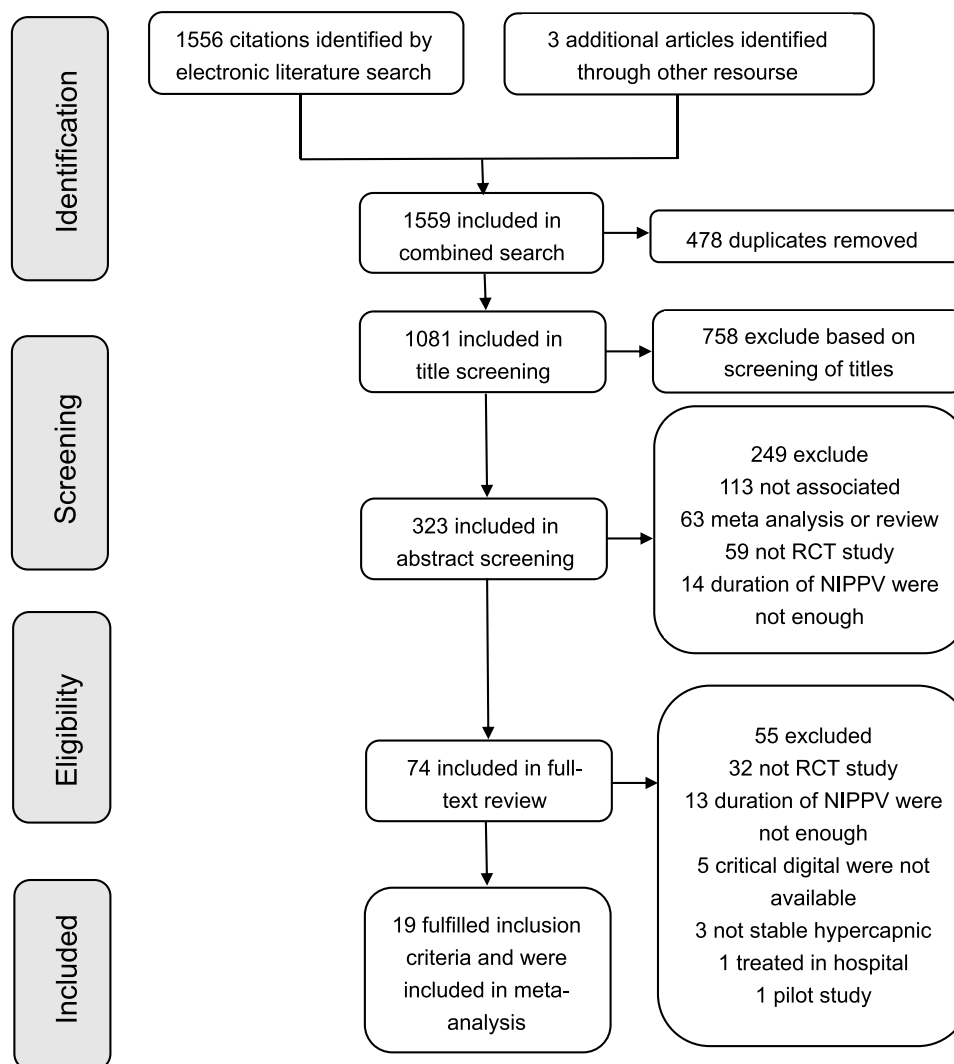
excluded based on screening of titles, and 249 were excluded after abstract screening. Finally, 55 studies were discarded through full-text review for the following reasons: not an RCT: 32, insufficient duration of NIPPV: 13, critical digital data unavailable: 5, not stable hypercapnic: 3, treated in hospital: 1, and pilot study: 1. Finally, 19 articles<sup>12–18,30–41</sup> were included for quality assessment and analysis. The study selection procedure details were shown in Figure 1.

## Study Description

All included articles were RCTs, 13 studies provided data on mortality, 17 studies showed data on PaCO<sub>2</sub>; 8 studies discussed the MRC-dyspnea scale, and 10 studies discussed SGRQ scores; further details are provided in Table 1. The characteristics of the included studies are shown in Table 1, and the baseline characteristics of patients in the included studies are shown in Table 2.

## Study Quality and Publication Bias

All studies were evaluated as having an unclear risk of bias. All studies with the exception of one were judged as low risk of bias for random sequence generation.<sup>40</sup> Four studies used proper allocation and concealment methods, while the others



**Figure 1** Flow diagram of the study selection.

**Abbreviation:** NIPPV, noninvasive positive pressure ventilation.

**Table 1** Characteristics of the Included Studies

Author (Year)	Study Design	Location	Duration of Screening Time	Main Characteristics of the Subjects	Population (n); Randomized (Treatment/Control)	Intervention (Treatment/Control)	Duration	Time of Use NIPPV Per Day	IPAP	EPAP	dPCO <sub>2</sub> (mmHg)	Main Outcome
Xiang et al. (2007) <sup>37</sup>	RCT	China	4 W	FEV1/FVC < 70%; FEV1 < 50% predicted; PaCO <sub>2</sub> ≥ 55 mmHg	20/20	NPPV + LTOT/LTOT	2 Y	> 8 h	16–20	2–4	12.4	1, 2, 3, 4, 5, 7, 8
Zhou et al. (2012) <sup>38</sup>	RCT	China	NR	FEV1/FVC < 70%; 30% < FEV1 < 50% predicted; stable hypercapnic	26/32	NPPV + LTOT/LTOT	3 M	6–9 h	8–12	2–4	NR	2, 3, 7, 9
Zhou et al. (2008) <sup>39</sup>	RCT	China	NR	FEV1/FVC < 70%; Chronic respiratory failure	15/21	NPPV + LTOT/LTOT	1 Y	9 h	12–16	2–4	7.24	1, 2, 3, 4
Tang et al. (2010) <sup>35</sup>	RCT	China	Frequent exacerbation	FEV1/FVC < 70%; PaCO <sub>2</sub> ≥ 55 mmHg	12/13	NPPV + LTOT/LTOT	6 M	4–8 h	14–20	2–4	3.8	1, 2, 3, 6, 7, 9
Shang et al. (2009) <sup>34</sup>	RCT	China	4 W	FEV1/FVC < 70%; FEV1 < 50% predicted; PaCO <sub>2</sub> ≥ 55 mmHg	20/20	NPPV + LTOT/LTOT	2 Y	> 8 h	12–18	4–8	6	1, 2, 3, 4, 5, 7
Li et al. (2015) <sup>33</sup>	RCT	China	NR	FEV1/FVC < 70%; FEV1 < 50% predicted	30/30	NPPV + LTOT/LTOT	6 M	> 5 h	10–20	4–10	18.9	2, 3
Lin et al. (2015) <sup>31</sup>	RCT	China	NR	FEV1/FVC < 70%; relative severe; stable hypercapnic	39/39	NPPV + LTOT/LTOT	1 Y	4–9 h	12–18	2–4	NR	5, 6, 9
Li et al. (2011) <sup>32</sup>	RCT	China	NR	FEV1/FVC < 70%; FEV1 < 50% predicted; type II respiratory failure	24/24	NPPV + LTOT/LTOT	1 Y	> 8 h	16–20	4–6	11.5	1, 2, 3, 4, 5, 7, 8
Guo et al. (2015) <sup>30</sup>	RCT	China	2 W	FEV1/FVC < 70%; 30% ≤ FEV1 < 50% predicted; PaCO <sub>2</sub> ≥ 45 mmHg	30/30	NPPV + LTOT/LTOT	1 Y	6–9 h	10–14	4–5	15	2, 3, 4, 6, 7, 8, 9
Wang et al. (2010) <sup>36</sup>	RCT	China	1M	FEV1/FVC < 70%; 30% ≤ FEV1 < 50% predicted; PaCO <sub>2</sub> ≥ 45 mmHg	18/18	NPPV + LTOT/LTOT	1 Y	4–14 h	12–20	4–8	17	2, 3, 4, 6
Zhou et al. (2017) <sup>41</sup>	RCT	China	4 W	FEV1/FVC < 70%; FEV1 < 50% predicted; PaCO <sub>2</sub> > 50 mmHg	57/58	NPPV + LTOT/LTOT	3 M	5.6 ± 1.4 h	17.8	4.2	6.06	1, 2, 3, 8, 9
Köhnlein et al. (2014) <sup>13</sup>	RCT	Germany, Austria	4 W	FEV1/FVC < 70%; FEV1 < 30% predicted; PaCO <sub>2</sub> > 51.9 mmHg	102/102	NPPV + LTOT/LTOT	1 Y	5.9 h	21.6	4.8	7.45	1, 2, 4, 9

(Continued)

Table I (Continued).

Author (Year)	Study Design	Location	Duration of Screening Time	Main Characteristics of the Subjects	Population (n); Randomized (Treatment/Control)	Intervention (Treatment/Control)	Duration	Time of Use NIPPV Per Day	IPAP	EPAP	dPCO <sub>2</sub> (mmHg)	Main Outcome
Struik et al. (2014) <sup>16</sup>	RCT	The Netherlands	48 h	FEV1/FVC < 70%; FEV1 < 50% predicted; PaCO <sub>2</sub> > 45mmHg	101/100	NPPV + LTOT/LTOT	1 Y	> 5 h	19.2	4.8	3	1, 2, 3, 5, 8, 9
McEvoy et al. (2009) <sup>12</sup>	RCT	Australia	6 M	FEV1/FVC < 60%; FEV1 < 1.5L or FEV1 < 50% predicted; PaCO <sub>2</sub> > 46mmHg	72/72	NPPV + LTOT/LTOT	2.21 Y	4.5 h	12.9	5.1	-1.1	1, 2, 3, 6
Clini et al. (2002) <sup>15</sup>	RCT	Italy, France	4 W	FEV1/FVC < 60%; FEV1 < 1.5L or FEV1 < 50% predicted; PaCO <sub>2</sub> > 50mmHg, PaO <sub>2</sub> < 60 mmHg	43/47	NPPV + LTOT/LTOT	2 Y	9 ± 2 h	14	2	3.5	1, 2, 3, 4, 6, 7, 8, 9
Casanova et al. (2000) <sup>14</sup>	RCT	Spain	3 M	FEV1/FVC < 70%; FEV1 < 45% predicted	26/26	NPPV + LTOT/LTOT	1 Y	> 6 h	12	4	-1.3	1, 2, 3, 5, 6, 8
Gay et al. (1996) <sup>40</sup>	RCT	America	Minimal 6 W	FEV1 < 40% predicted; PaCO <sub>2</sub> > 45 mmHg	7/6	NPPV + LTOT/Sham-NPPV + LTOT	3M	5.9 h	10	2	NR	2, 3, 5, 6, 7
Duiverman et al. (2011) <sup>17</sup>	RCT	The Netherlands	4 W	FEV1/FVC < 70%, FEV1 < 50% predicted, PaCO <sub>2</sub> > 45mmHg	31/35	NIPPV + PR/PR	2Y	6.9 h	23	6	NR	1, 8, 9
Murphy et al. (2017) <sup>18</sup>	RCT	UK	2–4 W	FEV1 < 50% predicted, FEV1/FVC < 60%, PaCO <sub>2</sub> > 53 mmHg	57/59	NPPV + LTOT/sham-NPPV +LTOT	1Y	7.6 h	24	4	2	1, 2, 3, 9

**Notes:** Main outcomes: 1, all-cause mortality; 2, PaCO<sub>2</sub>; 3, PaO<sub>2</sub>; 4, frequency of hospitalization; 5, FEV1 (L); 6, FEV1%pred; 7, 6-MWD; 8, MRC-dyspnea scale; 9, SGRQ.

**Abbreviations:** RCT, randomized controlled trial; NIPPV, noninvasive positive pressure ventilation; LTOT, long-term oxygen therapy; NR, not reported; PR, pulmonary rehabilitation; IPAP, intermittent positive airway pressure; EPAP, expiratory positive airway pressure; dPaCO<sub>2</sub> = (NPPV group baseline PaCO<sub>2</sub> – NIPPV group endpoint PaCO<sub>2</sub>) – (control group baseline PaCO<sub>2</sub> – control group endpoint PaCO<sub>2</sub>); PaCO<sub>2</sub>, partial pressure of arterial carbon dioxide; PaO<sub>2</sub>, partial pressure of arterial oxygen; FEV1 (L), forced expiratory volume in 1 s; FEV1% pred, forced expiratory volume in one second in predicted; 6-MWVD, 6-min walk distance; MRC-dyspnea scale, Medical Research Council scale; SGRQ, St. George's Respiratory Questionnaire; W, week; M, month; Y, year; h, hour.

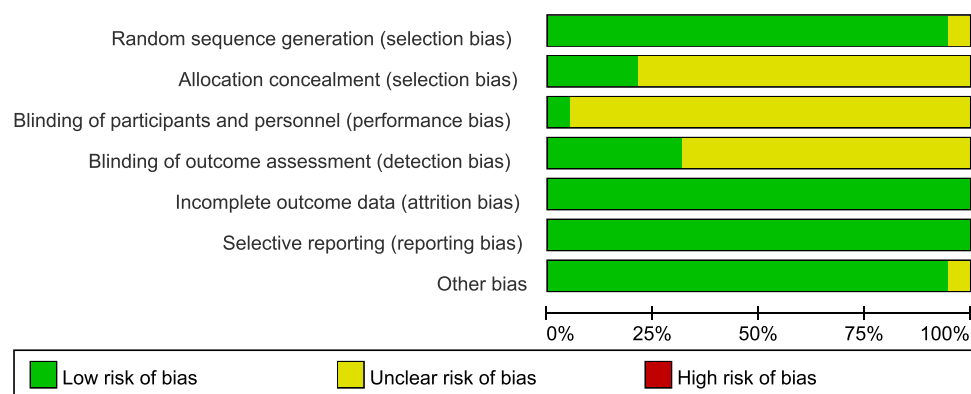
**Table 2** Baseline Characteristics of Patients

Author (Year)	LTHNPPV				Control			
	Age, Year Mean (SD)	Man N, (%)	PaCO <sub>2</sub> (mmHg)	PaO <sub>2</sub> (mmHg)	Age, Year Mean (SD)	Man N, (%)	PaCO <sub>2</sub> (mmHg)	PaO <sub>2</sub> (mmHg)
Xiang et al. (2007) <sup>37</sup>	71 (9)	15 (75%)	59.2 (2.8)	55 (4)	69 (10)	16 (80%)	58.8 (1.9)	54 (4)
Zhou et al. (2012) <sup>38</sup>	NR	21 (80.8%)	NR	NR	NR	20 (62.5%)	NR	NR
Zhou et al. (2008) <sup>39</sup>	72.81 (4.16)	16 (76.2)	59.28 (6.43)	57.42 (7.64)	69.76 (6.83)	23 (92%)	58.4 (9.21)	56.89 (8.26)
Tang et al. (2010) <sup>35</sup>	67.2 (6.7)	8 (66.7%)	61.2 (5.6)	56.3 (4.8)	68.3 (7.4)	9 (69.2)	61.8 (5.7)	57.2 (4.4)
Shang et al. (2009) <sup>34</sup>	70 (7)	11 (55%)	59 (6)	55 (7)	69 (5)	14 (70%)	58 (4)	54 (4)
Li et al. (2015) <sup>33</sup>	NR	NR	65.3 (4.5)	52.9 (3.8)	NR	NR	64.9 (2.5)	51.6 (4.3)
Lin et al. (2015) <sup>31</sup>	NR	NR	NR	NR	NR	NR	NR	NR
Li et al. (2011) <sup>32</sup>	72 (11)	16 (66.7%)	61.3 (3.2)	57.2 (4.8)	70 (9)	19 (79.2)	60.4 (2.2)	56 (4.3)
Guo et al. (2015) <sup>30</sup>	65.6 (4.3)	21 (70%)	72.12 (5.9)	52.11 (6.11)	64.1 (5.2)	20 (66.7%)	71.23 (6.7)	52.15 (6.57)
Wang et al. (2010) <sup>36</sup>	64.0	11 (61%)	67 (5)	52 (7)	62.44	8 (44.4%)	66 (6)	52 (7)
Zhou et al. (2017) <sup>41</sup>	66.91 (7.1)	36 (80)	57.78 (2.88)	69.76 (15.83)	68.47 (6.57)	35 (77.78%)	58.07 (3.5)	73.99 (27.85)
Köhnlein et al. (2014) <sup>13</sup>	62.2 (8.6)	65 (64%)	58.5 (6)	64.5 (15.75)	64.4 (8)	56 (60%)	57.75 (5.25)	62.25 (14.25)
Struik et al. (2014) <sup>16</sup>	61.9 (7.9)	36 (67%)	60 (9)	62.25 (12)	62.3 (7.9)	34 (63%)	56.25 (7.5)	59.25 (13.5)
McEvoy et al. (2009) <sup>12</sup>	67.2	50 (69%)	52.6	54.8	68.8	44 (61%)	54.4	52.5
Clini et al. (2002) <sup>15</sup>	64 (7)	32 (82%)	54 (4.5)	50.25 (6)	66 (14)	37 (79%)	55.5 (4.5)	49.5 (6)
Casanova et al. (2000) <sup>14</sup>	64 (5)	20 (100%)	50.7 (7.9)	55.7 (8.6)	68 (4)	23 (95.8)	53.2 (8.6)	57.5 (7.2)
Gay et al. (1996) <sup>40</sup>	71 (4.5)	5 (71.4%)	54.7 (8.8)	48.5 (2.5)	66.5 (9.1)	5 (83.3%)	66.4 (15.1)	57.8 (11.5)
Duiverman et al. (2011) <sup>17</sup>	63 (10)	16 (66.7%)	NR	NR	61 (8)	17 (53.1)	NR	NR
Murphy et al. (2017) <sup>18</sup>	66.4 (10.2)	28 (49%)	59 (7)	48 (9)	67.1 (9)	19 (32%)	59 (7)	48 (8)

**Abbreviations:** LTHNPPV, long-term home noninvasive positive pressure ventilation; SD, standard deviation; PaCO<sub>2</sub>, partial pressure of arterial carbon dioxide; PaO<sub>2</sub>, partial pressure of arterial oxygen; NR, not reported.

did not properly state their methods.<sup>12,13,15,41</sup> Due to the lack of a suitable sham option for NIPPV, only one study that used sham NIPPV was evaluated as low risk of performance bias.<sup>40</sup> Six studies used appropriate methods for outcome assessment, while the others did not.<sup>13–16,18,41</sup> One study did not provide baseline data and was judged as having another bias. The risk of bias graph and the risk of bias summary are shown in [Figures 2](#) and [3](#), respectively.

Publication bias for mortality was evaluated, and no significant publication bias was found by inspection of funnel plots (additional file: [Figure s1](#)). Asymmetry was tested by the Egger's regression test, which showed no significant asymmetry (RR, -0.63; 95% CI: -1.56–0.31; P = 0.166) (additional file: [Figure s2](#)). Publication bias for other endpoints was also evaluated by funnel plots (additional file: [Figures s3–s9](#)).

**Figure 2** Risk of bias graph.



	Random sequence generation (selection bias)	Allocation concealment (selection bias)	Blinding of participants and personnel (performance bias)	Blinding of outcome assessment (detection bias)	Incomplete outcome data (attrition bias)	Selective reporting (reporting bias)	Other bias
Casanova et al (2000) <sup>14</sup>	+	?	?	+	+	+	+
Clini et al (2002) <sup>15</sup>	+	+	?	+	+	+	+
Duiverman et al (2011) <sup>17</sup>	+	?	?	?	+	+	+
Gay et al (1996) <sup>40</sup>	?	?	+	?	+	+	+
Guo et al (2015) <sup>30</sup>	+	?	?	?	+	+	+
Köhnlein et al (2014) <sup>13</sup>	+	+	?	+	+	+	+
Li et al (2011) <sup>32</sup>	+	?	?	?	+	+	+
Li et al (2015) <sup>33</sup>	+	?	?	?	+	+	+
Lin et al (2015) <sup>31</sup>	+	?	?	?	+	+	+
McEvoy et al (2009) <sup>12</sup>	+	+	?	?	+	+	+
Murphy et al (2017) <sup>18</sup>	+	?	?	+	+	+	+
Shang et al (2009) <sup>34</sup>	+	?	?	?	+	+	+
struik et al (2014) <sup>16</sup>	+	?	?	+	+	+	+
Tang et al (2010) <sup>35</sup>	+	?	?	?	+	+	+
Wang et al (2010) <sup>36</sup>	+	?	?	?	+	+	+
Xiang et al (2007) <sup>37</sup>	+	?	?	?	+	+	+
Zhou et al (2008) <sup>39</sup>	+	?	?	?	+	+	+
Zhou et al (2012) <sup>38</sup>	+	?	?	?	+	+	?
Zhou et al (2017) <sup>41</sup>	+	+	?	+	+	+	+

Figure 3 Risk of bias summary.



## Quality of Evidence

The quality of evidence synthesis was evaluated using the GRADE approach according to GRADE Quality assessment, and the evidence syntheses are shown in additional file [Table s1](#).<sup>29</sup>

## Primary Outcomes

Thirteen studies ( $n = 1168$ ) that included mortality data were pooled and combined. Mortality was significantly lower in the NIPPV group compared to the control group (128/580 [22.1%] vs 172/588 [29.3%]; RR = 0.76; 95% CI: 0.61–0.95;  $P = 0.02$ ;  $I^2 = 14\%$ ). There was no significant heterogeneity between the studies ( $\chi^2 = 13.97$ , degrees of freedom [df] = 12,  $P = 0.30$ ,  $I^2 = 14\%$ ) ([Figure 4A](#)).

## Secondary Outcomes

Eight studies ( $n = 558$ ) that included data on the frequency of Hospital admissions were included in the meta-analysis and indicated a significant reduction of hospitalization in the NIPPV group compared to the control group (WMD,  $-1.74$ ; 95% CI:  $-2.30$  to  $-1.17$ ;  $P < 0.00001$ ) and had a high heterogeneity ( $\chi^2 = 85.85$ ,  $df = 7$ ;  $P < 0.00001$ ;  $I^2 = 92\%$ ) (additional file: [Figure s10](#)).

Seventeen studies ( $n = 1042$ ) that reported data on PaCO<sub>2</sub> were combined and analyzed. PaCO<sub>2</sub> decreased significantly in the NIPPV group compared to the control group (WMD,  $-7.07$ ; 95% CI:  $-9.78$  to  $-4.37$ ;  $P < 0.00001$ ) and had a high heterogeneity ( $\chi^2 = 488.95$ ;  $df = 16$ ;  $P < 0.00001$ ;  $I^2 = 97\%$ ) (additional file: [Figure s11](#)).

Sixteen studies ( $n = 831$ ) included PaO<sub>2</sub> data. These studies showed a significant improvement in PaO<sub>2</sub> in the NIPPV group compared to the control group (WMD,  $3.97$ ; 95% CI:  $1.86$ – $6.08$ ;  $P = 0.0002$ ;  $I^2 = 85\%$ ), with a high heterogeneity ( $\chi^2 = 100.03$ ;  $df = 15$ ;  $P < 0.00001$ ;  $I^2 = 85\%$ ) (additional file: [Figure s12](#)).

Our study found that LTHNIPPV was also beneficial in improving exercise capacity and HRQL and in relieving dyspnea but showed no significant benefit for FEV<sub>1</sub>% pred (additional file 1: [Figures s13–s16](#)).

### Association Between Baseline PaCO<sub>2</sub> Level and the Treatment Effect of NIPPV versus Control Treatment

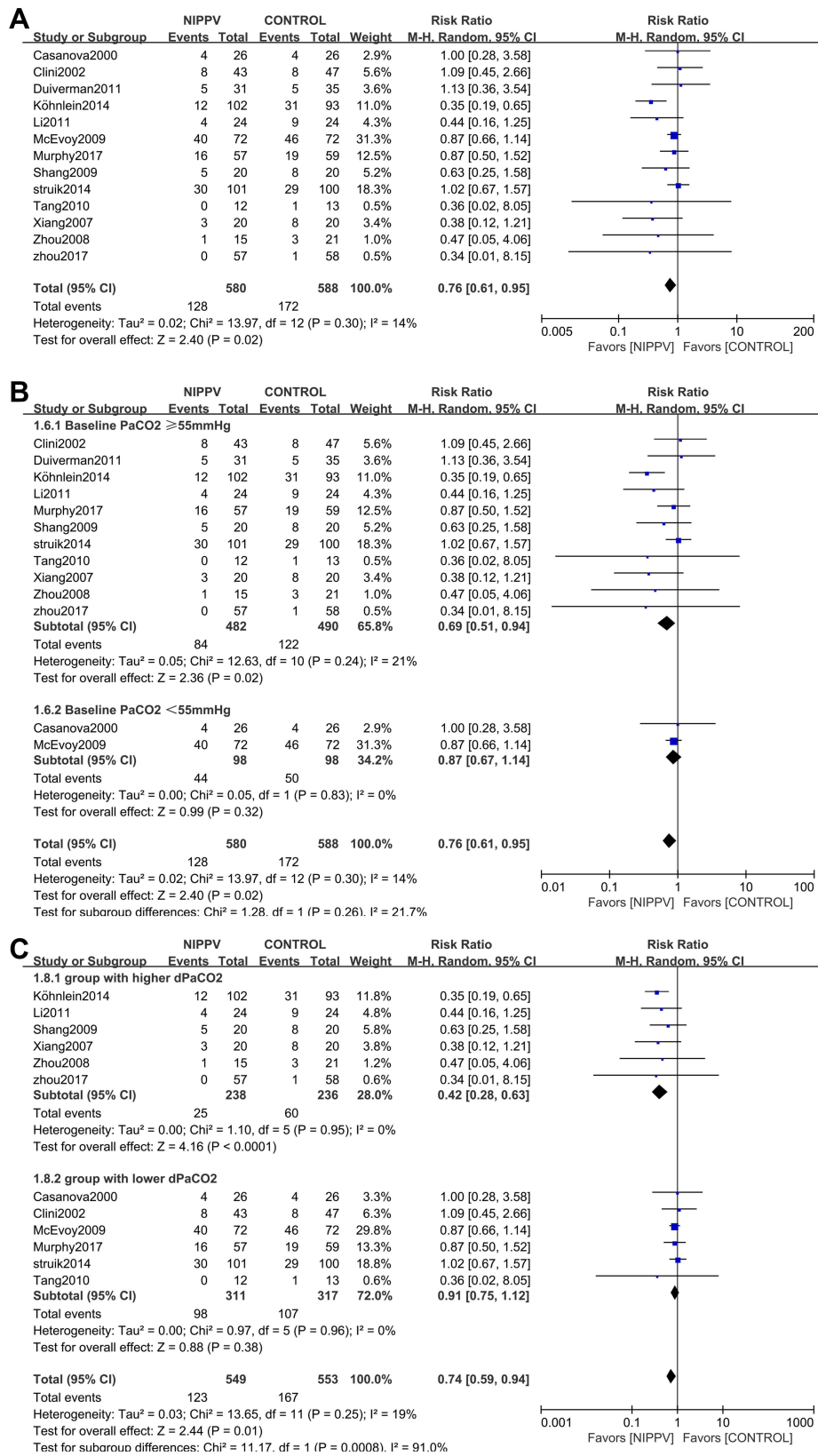
We performed subgroup analysis based on the baseline PaCO<sub>2</sub> level and found that mortality was significantly lower in the NIPPV group compared to the control group in the higher baseline PaCO<sub>2</sub>-level subgroup but not in the lower baseline PaCO<sub>2</sub>-level subgroup (baseline PaCO<sub>2</sub>  $\geq 55$  mmHg RR = 0.69; 95% CI: 0.51–0.94;  $P = 0.02$ ;  $I^2 = 21\%$  vs baseline PaCO<sub>2</sub>  $< 55$  mmHg RR = 0.87; 95% CI: 0.67–1.14;  $P = 0.32$ ;  $I^2 = 0\%$ ); the interactions were not significant ( $P$  interaction = 0.26; [Figure 4B](#)).

The frequency of hospital admissions was significantly lower in the NIPPV group compared to the control group in both higher and lower baseline PaCO<sub>2</sub>-level subgroups (baseline PaCO<sub>2</sub>  $\geq 55$  mmHg; WMD,  $-1.91$ ; 95% CI:  $-2.47$  to  $-1.35$ ;  $P < 0.00001$ ;  $I^2 = 91\%$  vs baseline PaCO<sub>2</sub>  $< 55$  mmHg WMD  $-0.50$ ; 95% CI:  $-1.26$  to  $0.26$ ;  $P = 0.20$ ); the interactions were significant ( $P$  interaction = 0.003; additional file: [Figure s17](#)).

End point PaCO<sub>2</sub> was significantly lower in the NIPPV group compared to the control group in both higher and lower baseline PaCO<sub>2</sub>-level subgroups (baseline PaCO<sub>2</sub>  $\geq 55$  mmHg; WMD,  $-8.76$ ; 95% CI:  $-11.67$  to  $-5.84$ ;  $P < 0.00001$ ;  $I^2 = 95\%$  vs baseline PaCO<sub>2</sub>  $< 55$  mmHg; WMD  $-2.73$ ; 95% CI:  $-4.52$  to  $-0.94$ ;  $P = 0.003$ ;  $I^2 = 42\%$ ); the interactions were significant ( $P$  interaction = 0.0005; additional file: [Figure s18](#)).

### Association Between Degree of dPaCO<sub>2</sub> and Treatment Effect of NIPPV versus Control Treatment

We performed subgroup analysis based on the degree of dPaCO<sub>2</sub> and found that mortality was significantly lower in the NIPPV group compared to the control group in the higher dPaCO<sub>2</sub> subgroup but not in the lower dPaCO<sub>2</sub> subgroup (higher dPaCO<sub>2</sub> RR = 0.42; 95% CI: 0.28–0.63;  $P < 0.0001$ ;  $I^2 = 0\%$  vs lower dPaCO<sub>2</sub> RR = 0.91; 95% CI: 0.75–1.12;  $P = 0.38$ ;  $I^2 = 0\%$ ); the interactions were significant ( $P$  interaction = 0.0008; [Figure 4C](#)). We then distributed the studies into three subgroups based on the degree of dPaCO<sub>2</sub> and found that mortality was significantly lower in the NIPPV group compared to the control group in the higher dPaCO<sub>2</sub> subgroup but not in the moderate and lower dPaCO<sub>2</sub> subgroups (higher dPaCO<sub>2</sub> RR = 0.38; 95% CI: 0.24–0.60;  $P < 0.0001$ ;  $I^2 = 0\%$  vs moderate dPaCO<sub>2</sub> RR = 0.94; 95% CI: 0.66–1.33;  $P = 0.72$ ;  $I^2 = 0\%$ ;



**Figure 4** Forest plot comparing mortality between NIPPV and control groups. **(A)** Overall result. **(B)** Subgroup analysis according to baseline PaCO<sub>2</sub> level. **(C)** Subgroup analysis according to the degree of dPaCO<sub>2</sub>.

**Abbreviations:** CI, confidence interval; M-H, Mantel–Haenszel.

vs lower dPaCO<sub>2</sub> RR = 0.87; 95% CI: 0.69–1.11; P = 0.27; I<sup>2</sup> = 0%); the interactions were significant (P interaction = 0.004; additional file: [Figure s19](#)).

The frequency of hospital admissions was significantly lower in the NIPPV group compared to the control group in both higher and lower dPaCO<sub>2</sub> subgroups (higher dPaCO<sub>2</sub> WMD –2.31; 95% CI: –2.87 to –1.74; P < 0.00001; I<sup>2</sup> = 89% vs lower dPaCO<sub>2</sub> WMD –1.13; 95% CI: –2.30 to –1.17; P < 0.00001; I<sup>2</sup> = 19%); the interactions were significant (P interaction = 0.0005; additional file: [Figure s20](#)). We then distributed the studies into three subgroups based on the degree of dPaCO<sub>2</sub> and found that the frequency of hospital admissions was significantly lower in the NIPPV group compared to the control group in all three subgroups (higher dPaCO<sub>2</sub> WMD –2.36; 95% CI: –3.06 to –1.67; P < 0.00001; I<sup>2</sup> = 92% vs moderate dPaCO<sub>2</sub> WMD –1.57; 95% CI: –2.32 to –0.83; P < 0.0001; I<sup>2</sup> = 55% vs lower dPaCO<sub>2</sub> WMD –0.98; 95% CI: –1.75 to –0.21; P = 0.01; I<sup>2</sup> = 72%); the interactions were significant (P interaction = 0.03; additional file: [Figure s21](#)).

## Others

As for mortality, we performed subgroup analyses based on change in PaCO<sub>2</sub> in the control treatment group, period of prior stable time, and duration of follow-up time (additional file: [Figures s22–s24](#)). The subgroup analysis results are shown in additional file: [Table s2](#).

## Discussion

The main finding of our study was that LTHNIPPV significantly reduced mortality, the frequency of hospital admissions, PaCO<sub>2</sub>, and dyspnea and improved PaO<sub>2</sub>, exercise capacity, and HRQL but showed no significant benefit for FEV<sub>1</sub>% pred compared to control treatment. Moreover, patients with higher baseline PaCO<sub>2</sub> level benefited from decreased mortality and frequency of hospital admissions when treated with LTHNIPPV, while patients with lower baseline PaCO<sub>2</sub> level did not. Reduction in PaCO<sub>2</sub> may be associated with decreased mortality and reduced frequency of hospital admissions.

Our results had some differences compared to those of previous meta-analyses of LTHNIPPV in patients with stable hypercapnic COPD. First, we included 1482 patients in 19 RCTs, while other studies included between six and nine RCTs.<sup>19,21,22</sup> Second, we found that LTHNIPPV could reduce mortality, while previous meta-analysis found that NIPPV reduced PaCO<sub>2</sub> but did not significantly reduce mortality in patients with stable hypercapnic COPD. The most recent meta-analysis study, which combined RCTs and observational studies, found that LTHNIPPV reduced all-cause mortality compared to control treatment for patients with stable hypercapnic COPD, but when evidence was limited to data from RCTs, the results were not statistically significant.<sup>23</sup> We hypothesize that patient selection and intensity of ventilation setting were the two main contributors to the different results of our study and previous studies.

With regard to patient selection, the stable hypercapnia criteria varied among the trials included in previous meta-analysis studies, and some of the included patients may have had reversible hypercapnia.<sup>20,22</sup> Reversible hypercapnic patients are those who have hypercapnia during acute exacerbation but return to normocapnia during follow-up.<sup>7</sup> Studies had found that patients with stable hypercapnia have a poor prognosis compared to those with reversible hypercapnia and normocapnia, but patients with reversible hypercapnia had a similar outcome as those with normocapnia.<sup>6–11</sup> It is possible that LTHNIPPV reduces mortality in patients with stable hypercapnic COPD but not in patients with reversible hypercapnic COPD. Trials with high numbers of patients with reversible hypercapnia may have diluted the treatment effect of LTHNIPPV on reducing mortality compared to control treatment. Murphy et al found that during a screening period of 2 weeks, as many as 50% of the patients had already become normocapnic. Struik et al found that after a 1-year follow-up, PaCO<sub>2</sub> decreased by 11.25 mmHg in the NIPPV group and by 8.25 mmHg in the control treatment group. The criteria of stable hypercapnia should be stricter and unified in future studies.

With regard to the intensity of ventilation setting, it is likely that many RCTs included in previous meta-analyses had insufficient ventilation settings to reduce PaCO<sub>2</sub>, leading to negative results. Two meta-analysis studies found that LTHNIPPV treatment, with the goal of reducing PaCO<sub>2</sub>, significantly decreased mortality in patients with stable hypercapnia when compared to control treatment.<sup>22,41</sup> The definition of high-intensity NIPPV is NIPPV treatment with the goal of normalizing or maximally reducing PaCO<sub>2</sub>.<sup>42</sup> Studies and reviews have proven that higher IPAP or high-intensity ventilation improves blood gas exchange, FEV<sub>1</sub>%predicted, and/or mortality.<sup>43–46</sup>

Baseline PaCO<sub>2</sub> level may be a good index for reversible hypercapnia and is associated with the degree of PaCO<sub>2</sub> reduction. After a period of screening, patients with a higher baseline PaCO<sub>2</sub> level (PaCO<sub>2</sub> ≥ 55 mmHg) seem less likely to have reversible hypercapnia than patients with a relatively lower baseline PaCO<sub>2</sub> (45 mmHg ≤ PaCO<sub>2</sub> < 55 mmHg). Our meta-analysis study found that patients with higher baseline PaCO<sub>2</sub> levels may have benefited from decreased mortality when treated with LTHNIPPV, while patients with lower baseline PaCO<sub>2</sub> levels did not. When treated with LTHNIPPV, patients with higher baseline PaCO<sub>2</sub> levels achieved a higher degree of PaCO<sub>2</sub> reduction than patients with lower baseline PaCO<sub>2</sub> levels ( $P_{\text{interaction}} = 0.0005$ ; additional file: [Figure s18](#)).

Compared to control treatment, the dPaCO<sub>2</sub> could be a suitable index for the treatment potential of NIPPV to reduce PaCO<sub>2</sub>. In trials with fewer patients with reversible hypercapnia, PaCO<sub>2</sub> would not significantly decrease in the control treatment group, but if the intensity of NIPPV was sufficient, PaCO<sub>2</sub> would significantly reduce in the NIPPV group, together with a higher degree of dPaCO<sub>2</sub>. Our study found that dPaCO<sub>2</sub> was associated with decreased mortality and reduced the frequency of hospital admissions ( $P_{\text{interaction}} = 0.0008$  and  $0.0004$  respectively; [Figure 4C](#) and additional file: [Figure s19](#)). Taken together, our results suggest that baseline level and reduction in PaCO<sub>2</sub> are associated with treatment effect of LTHNIPPV in patients with stable hypercapnic COPD in terms of decreasing mortality.

Several mechanisms might account for the association between decreased mortality and baseline level and reduction in PaCO<sub>2</sub>. First, previous studies have shown that the strength and endurance of the diaphragm decline as a result of hypercapnia<sup>47,48</sup> and that a reduction in PaCO<sub>2</sub> might relieve respiratory muscle dysfunction.<sup>21</sup> Second, CO<sub>2</sub>-associated vasodilatation in patients with hypercapnic COPD results in edema, which may be relieved by reducing the elevated PaCO<sub>2</sub>.<sup>49–51</sup> Finally, a reduction in PaCO<sub>2</sub> would be helpful for the central breathing center in terms of re-setting CO<sub>2</sub> sensitivity and improving blood gases during spontaneous breathing periods.<sup>43,52,53</sup>

## Limitations

This meta-analysis study has some limitations that warrant discussion. First, the prior screening time for the definition of stable hypercapnic varied, which may have affected our results. To address this problem, subgroup analysis was performed, and the results remained consistent. Moreover, there was no significant heterogeneity for the main outcome, mortality; so, our main findings were credible. Second, the measurement tools and data types were different in some outcomes; so, not all results were combined and analyzed for some secondary outcomes, and the quality of these results was evaluated as low or very low. Third, the quality of the included studies was inconsistent; many trials had uncertain bias for selection, performance, and detection, and these risks of bias were considered when assessing the quality of evidence. Finally, we concluded from our results based on clinical trials that the mechanisms of the association between the reduction in PaCO<sub>2</sub> and decreased mortality were still unclear; therefore, further studies are necessary to confirm our results.

## Conclusion

LTHNIPPV significantly reduced mortality. The baseline level and reduction in PaCO<sub>2</sub> may be associated with the treatment effect of LTHNIPPV in patients with stable hypercapnic COPD. Further large-scale, multicenter RCTs are needed to confirm our results.

## Abbreviations

LTHNIPPV, long-term home noninvasive positive pressure ventilation; COPD, chronic obstructive pulmonary disease; PaCO<sub>2</sub>, partial pressure of arterial carbon dioxide; RCT, randomized clinical trial; GRADE, Grading of Recommendations Assessment, Development, and Evaluation; RR, relative risk; CI, confidence interval; WMD, weighted mean difference; PaO<sub>2</sub>, partial pressure of oxygen; HRQL, health-related quality of life; FEV<sub>1</sub>% pred, forced expiratory volume in one second in predicted; 6-MWD, 6-min walk distance; dPaCO<sub>2</sub> = (NIPPV group baseline PaCO<sub>2</sub> - NIPPV group endpoint PaCO<sub>2</sub>) - (control group baseline PaCO<sub>2</sub> - control group endpoint PaCO<sub>2</sub>); GOLD, global initiative for chronic obstructive lung disease; Df, degrees of freedom; LTOT, long-term oxygen therapy; NR, not reported; PR, pulmonary rehabilitation; IPAP, intermittent positive airway pressure; EPAP, expiratory positive airway pressure; FEV<sub>1</sub> (L), forced expiratory volume in first second; MRC-dyspnea scale, Medical Research Council scale;

SGRQ, St. George's Respiratory Questionnaire; W, weeks; M, month, Y, year; h, hour; SD, standard deviation; WMD, weighted mean difference; SE, standard error; ARF, acute respiratory failure.

## Acknowledgments

The study was supported by the National Key Research and Development Program of China (2019YFC0121700), Beijing Hospitals Authority Clinical Medicine Development of Special Funding Support (XMLX201709), Beijing Municipal Commission of Science and Technology Cultivation Research Program of Biomedicine and Life Science Innovation (Z17110000417057), and Beijing Hospitals Authority Youth Program (QML20180303).

## Author Contributions

All authors have contributed toward this paper. YMM, ZXC, ZPW, and ZJL proposed the concepts and designed the study. ZPW and ZJL performed the acquisition, analysis, and interpretation of data and statistical analysis. All authors contributed to data analysis, drafting or revising the article, have agreed on the journal to which the article was submitted, gave final approval of the version to be published, and agree to be accountable for all aspects of the work.

## Disclosure

The authors declare no conflicts of interest in this work.

## References

1. GOLD reports for personal use. Global Initiative for Chronic Obstructive Lung Disease - GOLD. Available from: <https://www.nice.org.uk/guidance/ng115>. Accessed March 21, 2022.
2. Wang H, Naghavi M, Allen C, et al. Global, regional, and national life expectancy, all-cause mortality, and cause-specific mortality for 249 causes of death, 1980–2015: a systematic analysis for the Global Burden of Disease Study 2015. *Lancet*. 2016;388(10053):1459–1544.
3. Rabe KF, Watz H. Chronic obstructive pulmonary disease. *Lancet*. 2017;389(10082):1931–1940. doi:10.1016/S0140-6736(17)31222-9
4. McCurdy BR. Noninvasive positive pressure ventilation for acute respiratory failure in patients with chronic obstructive pulmonary disease (COPD): an evidence-based analysis. *Ont Health Technol Assess Ser*. 2012;12(8):1–102.
5. Struik FM, Lacasse Y, Goldstein RS, Kerstjens HA, Wijkstra PJ. Nocturnal noninvasive positive pressure ventilation in stable COPD: a systematic review and individual patient data meta-analysis. *Respir Med*. 2014;108(2):329–337. doi:10.1016/j.rmed.2013.10.007
6. Moser KM, Shibel EM, Beamon AJ. Acute respiratory failure in obstructive lung disease long-term survival after treatment in an intensive care unit. *JAMA*. 1973;225(7):705–707. doi:10.1001/jama.1973.03220340019004
7. Costello R, Deegan P, Fitzpatrick M, McNicholas WT. Reversible hypercapnia in chronic obstructive pulmonary disease: a distinct pattern of respiratory failure with a favorable prognosis. *Am J Med*. 1997;102(3):239–244. doi:10.1016/S0002-9343(97)00017-X
8. Matkovic Z, Huerta A, Soler N, et al. Predictors of adverse outcome in patients hospitalised for exacerbation of chronic obstructive pulmonary disease. *Respiration*. 2012;84(1):17–26. doi:10.1159/000335467
9. Yang H, Xiang P, Zhang E, et al. Is hypercapnia associated with poor prognosis in chronic obstructive pulmonary disease? A long-term follow-up cohort study. *BMJ open*. 2015;5(12):e008909. doi:10.1136/bmjopen-2015-008909
10. Cooper CB, Waterhouse J, Howard P. Twelve year clinical study of patients with hypoxic cor pulmonale given long term domiciliary oxygen therapy. *Thorax*. 1987;42(2):105–110. doi:10.1136/thx.42.2.105
11. Leger P, Bedicam JM, Cornette A, et al. Nasal intermittent positive pressure ventilation. Long-term follow-up in patients with severe chronic respiratory insufficiency. *Chest*. 1994;105(1):100–105. doi:10.1378/chest.105.1.100
12. McEvoy RD, Pierce RJ, Hillman D, et al. Nocturnal non-invasive nasal ventilation in stable hypercapnic COPD: a randomised controlled trial. *Thorax*. 2009;64(7):561–566. doi:10.1136/thx.2008.108274
13. Köhnlein T, Windisch W, Köhler D, et al. Non-invasive positive pressure ventilation for the treatment of severe stable chronic obstructive pulmonary disease: a prospective, multicentre, randomised, controlled clinical trial. *Lancet Respir med*. 2014;2(9):698–705. doi:10.1016/S2213-2600(14)70153-5
14. Casanova C, Celli BR, Tost L, et al. Long-term controlled trial of nocturnal nasal positive pressure ventilation in patients with severe COPD. *Chest*. 2000;118(6):1582–1590. doi:10.1378/chest.118.6.1582
15. Clini E, Sturani C, Rossi A, et al. The Italian multicentre study on noninvasive ventilation in chronic obstructive pulmonary disease patients. *Eur Respir J*. 2002;20(3):529–538. doi:10.1183/09031936.02.02162001
16. Struik FM, Sprooten RTM, Kerstjens HAM, et al. Nocturnal non-invasive ventilation in COPD patients with prolonged hypercapnia after ventilatory support for acute respiratory failure: a randomised, controlled, parallel-group study. *Thorax*. 2014;69(9):826–834. doi:10.1136/thoraxjnl-2014-205126
17. Duiverman ML, Wempe JB, Bladder G, et al. Two-year home-based nocturnal noninvasive ventilation added to rehabilitation in chronic obstructive pulmonary disease patients: a randomized controlled trial. *Respir Res*. 2011;12(1). doi:10.1186/1465-9921-12-112.
18. Murphy PB, Rehal S, Arbane G, et al. Effect of home noninvasive ventilation with oxygen therapy vs oxygen therapy alone on hospital readmission or death after an acute COPD exacerbation. *JAMA*. 2017;317(21):2177. doi:10.1001/jama.2017.4451



19. Banifadel M, Zayed Y, Awad MT, Yelang A, Ghanim MT, Srour K. Effect of home non-invasive ventilation in moderate-to-severe COPD with hypercapnia: a meta-analysis of randomized controlled trials. *Am J Respir Crit Care Med*. 2019;199(9). doi:10.1164/ajrccm-conference.2019.199.1\_MeetingAbstracts.A2448
20. Dretzke J, Moore D, Dave C, et al. The effect of domiciliary noninvasive ventilation on clinical outcomes in stable and recently hospitalized patients with COPD: a systematic review and meta-analysis. *Int J Chron Obstruct Pulmon Dis*. 2016;11:2269–2286. doi:10.2147/COPD.S104238
21. Liao H, Pei W, Li H, et al. Efficacy of long-term noninvasive positive pressure ventilation in stable hypercapnic COPD patients with respiratory failure: a meta-analysis of randomized controlled trials. *Int J Chron Obstruct Pulmon Dis*. 2017;12:2977–2985. doi:10.2147/COPD.S148422
22. Gantzorn EK, Prior TS, Hilberg O. Long-term non-invasive ventilation for stable chronic hypercapnic COPD. *Eur Clin Respir J*. 2019;6(1):1644893. doi:10.1080/20018525.2019.1644893
23. Wilson ME, Dobler CC, Morrow AS, et al. Association of home noninvasive positive pressure ventilation with clinical outcomes in chronic obstructive pulmonary disease. *JAMA*. 2020;323(5):455–465.
24. Liberati A, Altman DG, Tetzlaff J, et al. The PRISMA statement for reporting systematic reviews and meta-analyses of studies that evaluate healthcare interventions: explanation and elaboration. *BMJ*. 2009;339:b2700. doi:10.1136/bmj.b2700
25. Higgins JPT, Green S. *Cochrane handbook for systematic reviews of interventions* version 5.1.0. Oxford: The Cochrane Collaboration; 2011. Available from: <http://handbook-5-1-cochrane.org>. Accessed March 21, 2022.
26. Higgins JPT, Altman DG, Gotzsche PC, et al. The Cochrane collaboration's tool for assessing risk of bias in randomised trials. *BMJ*. 2011;343(oct18 2):d5928–d5928. doi:10.1136/bmj.d5928
27. Guyatt G, Oxman AD, Akl EA, et al. GRADE guidelines: 1. Introduction-GRADE evidence profiles and summary of findings tables. *J Clin Epidemiol*. 2011;64(4):383–394. doi:10.1016/j.jclinepi.2010.04.026
28. Murad MH. Clinical practice guidelines: a primer on development and dissemination. *Mayo Clin Proc*. 2017;92(3):423–433. doi:10.1016/j.mayocp.2017.01.001
29. Atkins D, Best D, Briss PA, et al. Grading quality of evidence and strength of recommendations. *BMJ*. 2004;328(7454):1490.
30. Guo JH, Feng ZJ, Wang HY, Huang ZY, Lu WJ, Li HP. Complicated associated Curative efficacy of long-term NIPPV on COPD with chronic respiratory failure. *Chin J Pract Med*. 2015;42(22):74–75.
31. Lin GY. Application value of long-term noninvasive positive pressure ventilation in stable chronic obstructive pulmonary disease (COPD) complicated with type II respiratory failure. *Mod Diagn Treat*. 2015;26(20):4752–4754.
32. Li H, Wang CY, Chu MH, Suo AY, Shi L, Mao QS. Clinical study of home noninvasive positive pressure mechanical ventilation in the treatment of stable severe chronic obstructive pulmonary disease. *Chin J Tuberc Respir Dis*. 2011;34(7):540–542.
33. Li YG, Xu XF, Zhao Y, Qiu SX. The observation of nocturnal noninvasive positive pressure ventilation in patients with stable chronic obstructive pulmonary disease. *Shanxi Med J*. 2015;44(17):1993–1995.
34. Shang YL, Luo W, Lu J. The treatment of long term noninvasive positive pressure ventilation in patients with stable severe chronic obstructive pulmonary disease. *J Clin Pulm Med*. 2009;14(09):1151–1152.
35. Tang M, Zhu JF, Chen X, Wu WL. Effect of long-term noninvasive positive pressure ventilation and home oxygen therapy in the treatment of stable chronic obstructive pulmonary disease with type II respiratory failure. *Chin J Postgrad Med*. 2010;33(22):39–41.
36. Wang F, Li YL, Liu ZX. Clinical value of home non-invasive positive pressure ventilation in patients with stable-phase chronic obstructive pulmonary disease. *Chin Pract Med*. 2010;37(16):36–37,40.
37. Xiang PC, Zhang X, Yang JN, et al. The efficacy and safety of long term home noninvasive positive pressure ventilation in patients with stable severe chronic obstructive pulmonary disease. *Chin J Tuberc Respir Dis*. 2007;30(10):746–750.
38. Zhou SX, Xiao XP, Tan J. Efficacy of noninvasive positive pressure ventilation in the treatment of stable hypercapnic COPD complicated with chronic respiratory failure. *Hainan Med J*. 2012;23(14):33–35.
39. Zhou XH, Yang JY, Shen C. Effect of non-invasive positive pressure ventilation and long-term oxygen therapy in patients with stable COPD. *Clinical Med J Chin*. 2008;14(4):486–488.
40. Gay PC, Hubmayr RD, Stroetz RW. Efficacy of nocturnal nasal ventilation in stable, severe chronic obstructive pulmonary disease during a 3-month controlled trial. *Mayo Clin Proc*. 1996;71(6):533–542. doi:10.4065/71.6.533
41. Zhou L, Li X, Guan L, et al. Home noninvasive positive pressure ventilation with built-in software in stable hypercapnic COPD: a short-term prospective, multicenter, randomized, controlled trial. *Int J Chron Obstruct Pulmon Dis*. 2017;12:1279–1286. doi:10.2147/COPD.S127540
42. Windisch W, Haesel M, Storre JH, Dreher M. High-intensity non-invasive positive pressure ventilation for stable hypercapnic COPD. *Int J Med Sci*. 2009;6(2):72–76. doi:10.7150/ijms.6.72
43. Schwarz SB, Magnet FS, Windisch W. Why high-intensity NPPV is favourable to low-intensity NPPV: clinical and physiological reasons. *Copd*. 2017;14(4):389–395. doi:10.1080/15412555.2017.1318843
44. van der Leest S, Duiverman ML. High-intensity non-invasive ventilation in stable hypercapnic COPD: evidence of efficacy and practical advice. *Respirology*. 2019;24(4):318–328. doi:10.1111/resp.13450
45. Dreher M, Storre JH, Schmoor C, Windisch W. High-intensity versus low-intensity non-invasive ventilation in patients with stable hypercapnic COPD: a randomised crossover trial. *Thorax*. 2010;65(4):303–308. doi:10.1136/thx.2009.124263
46. Windisch W, Vogel M, Sorichter S, et al. Normocapnia during nIPPV in chronic hypercapnic COPD reduces subsequent spontaneous PaCO<sub>2</sub>. *Respir Med*. 2002;96(8):572–579. doi:10.1053/rmed.2002.1326
47. Juan G, Calverley P, Talamo C, Schnader J, Roussos C. Effect of carbon dioxide on diaphragmatic function in human beings. *N Engl J Med*. 1984;310(14):874–879. doi:10.1056/NEJM198404053101402
48. Klimathianaki M, Vaporidi K, Georgopoulos D. Respiratory muscle dysfunction in COPD: from muscles to cell. *Curr Drug Targets*. 2011;12(4):478–488. doi:10.2174/138945011794751474
49. de Leeuw PW, Dees A. Fluid homeostasis in chronic obstructive lung disease. *Eur Respir J Suppl*. 2003;46(Supplement 46):33s–40s. doi:10.1183/09031936.03.00000603a
50. Elliott MW. Domiciliary non-invasive ventilation in stable COPD? *Thorax*. 2009;64(7):553–556. doi:10.1136/thx.2009.113423
51. Windisch W, Storre JH, Köhlein T. Nocturnal non-invasive positive pressure ventilation for COPD. *Expert Rev Respir Med*. 2015;9(3):295–308. doi:10.1586/17476348.2015.1035260

52. Windisch W, Dreher M, Storre JH, Sorichter S. Nocturnal non-invasive positive pressure ventilation: physiological effects on spontaneous breathing. *Respir Physiol Neurobiol*. 2006;150(2–3):251–260. doi:10.1016/j.resp.2005.05.017
53. Mehta S, Hill NS. Noninvasive ventilation. *Am J Respir Crit Care Med*. 2001;163(2):540–577. doi:10.1164/ajrccm.163.2.9906116

International Journal of Chronic Obstructive Pulmonary Disease

Dovepress

### Publish your work in this journal

The International Journal of COPD is an international, peer-reviewed journal of therapeutics and pharmacology focusing on concise rapid reporting of clinical studies and reviews in COPD. Special focus is given to the pathophysiological processes underlying the disease, intervention programs, patient focused education, and self management protocols. This journal is indexed on PubMed Central, MedLine and CAS. The manuscript management system is completely online and includes a very quick and fair peer-review system, which is all easy to use. Visit <http://www.dovepress.com/testimonials.php> to read real quotes from published authors.

Submit your manuscript here: <https://www.dovepress.com/international-journal-of-chronic-obstructive-pulmonary-disease-journal>