

# Controlled-release and preserved bioactivity of proteins from (self-assembled) core-shell double-walled microspheres

Weien Yuan<sup>1,2</sup>  
Zhenguo Liu<sup>1</sup>

<sup>1</sup>Department of Neurology, Xinhua Hospital, affiliated to Shanghai Jiao Tong University School of Medicine, Shanghai, <sup>2</sup>School of Pharmacy, Shanghai Jiao Tong University, Shanghai, People's Republic of China

**Abstract:** In order to address preserved protein bioactivities and protein sustained-release problems, a method for preparing double-walled microspheres with a core (protein-loaded nanoparticles with a polymer-suspended granule system formed core) and a second shell (a polymer-formed shell) for controlled drug release and preserved protein bioactivities has been developed using (solid-in-oil phase-in-hydrophilic oil-in-water (S/O/O<sub>II</sub>/W)) phases. The method, based on our previous microsphere preparation method (solid-in-oil phase-in-hydrophilic oil-in-water (S/O/O<sub>II</sub>/W)), employs different concentric poly(D,L-lactide-co-glycolide), poly(D,L-lactide), and protein-loaded nanoparticles to produce a suspended liquid which then self-assembles to form shell-core microspheres in the hydrophilic oil phase, which are then solidified in the water phase. Variations in the preparation parameters allowed complete encapsulation by the shell phase, including the efficient formation of poly(D,L-lactide) shell encapsulating a protein-loaded nanoparticle-based poly(D,L-lactide-co-glycolide) core. This method produces core-shell double-walled microspheres that show controlled protein release and preserved protein bioactivities for 60 days. Based upon these results, we concluded that the core-shell double-walled microspheres might be applied for tissue engineering and therapy for chronic diseases, etc.

**Keywords:** protein delivery, protein stability, core-shell microspheres, dextran nanoparticles

## Introduction

Encapsulation of proteins or peptides within biodegradable and biocompatible polymers is a successful and well-documented method for their sustained or controlled-release. The benefits of sustained or controlled-release microsphere systems include avoidance of resistance in bacteria<sup>1-4</sup> and pulsatile administration of vaccines to enhance immune response, etc.<sup>5,6</sup> Biodegradable and biocompatible polymer microspheres are most often prepared using water-in-oil-in-water (W/O/W), water-in-oil (W/O), or solid-in-oil-in-water (S/O/W) methods with poly(D,L-lactide-co-glycolide), and poly(D,L-lactide) due to their proven safety.<sup>7</sup> In this process, an aqueous solution of the protein, or of protein and an additive, is added to an organic solution of the polymer of choice to form an emulsion. This emulsion is then added to a large quantity of surfactant (polyvinyl alcohol, PVA) and an aqueous salt (sodium chloride) solution and the resulting solution is stirred until the solvent evaporates and the polymer microspheres solidify.

However, because proteins are large hydrophilic molecules and difficult to encapsulate within hydrophobic polymers, a high rate of mixing is employed to entrap the protein into pockets of water solution inside the hardened polymer microspheres, followed by freeze-drying.<sup>8</sup> This results in some proteins locating near the surfaces

Correspondence: Zhenguo Liu  
Department of Neurology,  
Xinhua Hospital affiliated to Shanghai Jiao  
Tong University School of Medicine, 1665  
Kongjiang Road, Shanghai 200092, People's  
Republic of China  
Tel/Fax +86 21 65790000  
Email zhenguoliu2004@yahoo.com.cn

Weien Yuan  
School of Pharmacy, Shanghai Jiao Tong  
University, 800 Dongchuan Road, Shanghai  
200240, People's Republic of China  
Tel/Fax +86 21 3420 5072  
Email yuanweien@126.com

of the microspheres. This can result in an initial burst of protein within the first 24 hours of placement in a PBS release solution both *in vitro* or *in vivo*.<sup>9,10</sup> While some formulation optimization can be employed to enhance the efficacy of controlled- or sustained-release of protein from single-walled polymer microspheres,<sup>11</sup> a better alternative for controlled- or sustained-release protein above that achievable for single-walled microspheres is through the use of core-shell (double-walled) microspheres.<sup>12,13</sup>

Core-shell polymer microspheres are often composed of two distinct polymers in a core and shell orientation. The mechanism for creation of core-shell polymer microspheres is through polymer-polymer phase separation of two immiscible polymers in solution.<sup>14</sup> Localizing the drug to the core of microspheres increases the amount of material through which the drug must diffuse, thereby slowing the drug-release rate.<sup>15</sup> Core-shell microspheres have been developed to encapsulate bovine serum albumin (BSA),<sup>12</sup> etanidazole,<sup>16</sup> doxorubicin,<sup>17</sup> 5-fluorouracil,<sup>18</sup> and piroxicam,<sup>19</sup> etc. These core-shell microspheres, to some extent, improve and extend the *in vitro* release profiles and release period of these compounds. These previous studies all used core-shell microspheres prepared using methods based on surface of water-oil or water-air (for example, water-in-oil-in-oil (W/O/O), or oil-in-oil-in-water (O/O/W) preparation.<sup>16,20</sup> However, these methods result in direct exposure of the protein molecule to water-air or water-oil interfaces, which can then result in protein denaturation.<sup>21</sup> For the same reason, core-shell microsphere systems often show low encapsulation efficiency for hydrophilic proteins.<sup>12</sup> Therefore, this paper concentrates on core-shell double-walled microspheres based upon a solid-in-oil-in-hydrophilic oil-in-water emulsion method, to address these problems.

To overcome the problems associated with core-shell microspheres (oil-water or water-air surface, low encapsulation efficiency, burst release, protein aggregation, etc) and to preserve protein bioactivity, we investigated the use of an aqueous phase-aqueous phase emulsion method for production of protein-loaded dextran nano/microparticles.<sup>21-24</sup> The dextran nano/microparticle preparation method was aimed at overcoming the issue of protein being directly exposed to all kinds of surfaces and used a solid-in-oil-in-hydrophilic oil-in-water (S/O/O<sub>h</sub>/W)<sup>25</sup> or solid-in-oil-in-hydrophilic oil-in-ethanol (S/O/O<sub>h</sub>/E)<sup>26</sup> method. This improved the encapsulation efficiency and the bioactivity of the released protein. Up till now, the encapsulation of protein-loaded dextran nanoparticles within core-shell microspheres has not been developed using S/O/O<sub>h</sub>/W or S/O/O<sub>h</sub>/E emulsion methods. The purpose of this study was to develop a method for preparing core-shell microspheres in

which the proteins BSA, myoglobin, and  $\beta$ -galactosidase) were encapsulated within a core of poly(D,L-lactide-co-glycolide) (PLGA), which was then further surrounded by a shell of poly(D,L-lactide) (PLA). The effects of different factors and the composition of the hydrophilic oil were also investigated. Myoglobin, BSA, and  $\beta$ -galactosidase were chosen as model proteins for characterizing the efficacy of protein-delivery systems from core-shell microspheres because of their small sizes (17.2 kDa, 66.2 kDa, and 130.0 kDa, respectively), which are similar to those of therapy proteins used in clinics. In addition, the bioactivity of  $\beta$ -galactosidase could be easily measured with a  $\beta$ -galactosidase kit, and the aggregations of myoglobin and BSA could also be easily quantified by size exclusion high-performance liquid chromatography (SEC-HPLC) detection.

To confirm the distribution of proteins within the polymer core, BSA and myoglobin were encapsulated and their localization to a particular polymer component was confirmed through microscopy. Burst release, encapsulation efficiency, protein aggregation, and preservation of protein bioactivity from the core-shell microspheres using the S/O/O<sub>h</sub>/W or S/O/O<sub>h</sub>/E emulsion method were investigated. The results confirmed that the core-shell microsphere systems had no bursting or aggregation, high encapsulation efficiency, and high preservation of protein bioactivities. The protein-release kinetics profiles from the core-shell microspheres studies were determined and the bioactivities of  $\beta$ -galactosidase were confirmed for the extended-release periods. The potential application of these core-shell microspheres might be in tissue engineering and therapy for chronic diseases, etc. Therefore, a controlled- or sustained-release period of proteins for 60 days was considered acceptable.

## Materials and methods

### Materials

PVA (biochemical reagent, average molecular weight [MW] 9000–10,000, 80% hydrolyzed), polyethylene glycol (biochemical reagent, PEG, MW 6000), dextran (biochemical reagent, MW 64,000–76,000),  $\beta$ -galactosidase (biochemical reagent,  $\beta$ -gal), and horse myoglobin (MGB) were purchased from Sigma-Aldrich (St Louis, MO). PLGA (lactide:glycolide 1A, 2A, and 3A, (50:50), MW 6500, 20,000, and 40,000–75,000 units) and PLA, Low IV and High IV (MW 40,000–75,000 units) were obtained from SurModics Pharmaceuticals (Birmingham, AL). Sodium dihydrogen phosphate (analytical reagent), ethylene glycol (EG, analytical reagent), 1,2-propylene glycol (PG, analytical reagent), glycerol (G, analytical reagent), PVA (biochemical reagent), polyvinyl-pyrrolidone

(PVP, biochemical reagent), poloxamer 188 (biochemical reagent), and trehalose were purchased from Chinese Medicine Group Chemical Reagent Corporation (Shanghai, People's Republic of China) (analytical reagent). Dichloromethane (DCM), ethyl acetate (analytical reagent), and PBS (analytical reagent) were all purchased from Sigma-Aldrich. The Micro Bicinchoninic Acid (BCA) Protein Assay Kit (23235) was purchased from Pierce Protein Research Products (Rockford, IL).

## Protein-loaded nano/microparticle preparation

A co-aqueous solution (3 mL) of dextran (0.5%, w/w), protein (0.25%, w/w), and PEG (5%, w/w) was mixed by vortex for 0.5 minutes and then frozen in a freezer at  $-80^{\circ}\text{C}$  overnight. The frozen samples were lyophilized using a Christ Alpha 1–2 laboratory freeze dryer (Osterode, Germany) operated at a pressure of  $5.25 \times 10^{-3}$  Pa for 24 hours. The lyophilized powders were suspended in 5 mL of DCM, followed by centrifugation at 12,000 rpm for 5 minutes on an Anker TGL-16C centrifuge (Shanghai, People's Republic of China) to remove the PEG continuous phase. The washing–centrifugation procedure was repeated three times, and the microparticles were evaporated at 1.33 Pa for 24 hours using a vacuum dryer (Fuma DZF-3, Shanghai Fuma Co, Ltd, Shanghai, People's Republic of China) to remove solvent residues. The obtained microparticles contained less than 0.5% (w/w) PEG after the washing process [2–24].

## Core-shell microsphere preparation

The protein-loaded nanoparticles and different concentrations of PLGA solution in DCM were vortexed for 30–60 seconds to achieve a homogenous mixture. The mixture was then transferred to different glass vials containing different concentrations of PLGA/DCM solutions and vortexed for an additional 30–60 seconds. This solid-in-oil emulsion was

added with a Pasteur pipette to 5 mL of different compositions of hydrophilic oil containing aqueous 0.5% PVA and stirred at 1200 rpm using a cruciform magnetic bar as a stirring rotor for 30–60 seconds. The resulting solid-in-oil-in-hydrophilic oil emulsion was then transferred to a beaker containing 5% w/w sodium chloride (1 L aqueous solution) or 200 mL ethyl alcohol and stirred at 120 rpm for 4 hours or 30 minutes, respectively. The microspheres were collected by centrifugation (1200 rpm for 5 minutes) and washed four times using purified water (Figure 1). The microspheres were then lyophilized and stored with a desiccant at  $-20^{\circ}\text{C}$ .

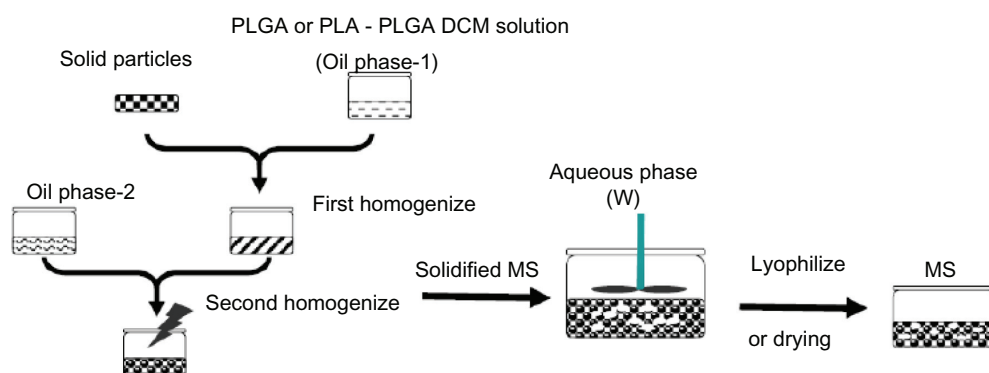
## Microscopy observations

Optical microscopy (Olympus CX41 microscope equipped with a digital camera [model #710, Tokyo, Japan]) was used to observe the progressive surface morphologies and core-shell thickness of the microspheres during preparation. A few droplets of microsphere suspension in hydrophilic oil phase or of solidifying microspheres in aqueous solution for 3 hours were placed directly on a microscopy sample holder, and the images or observed at various magnifications.

Scanning electron microscopy (SEM; FEI Sirion 2000 SEM system [Eindhoven, The Netherlands]) was also employed to image the surface and internal morphologies. Microsphere samples were cross-sectioned using a razor blade to allow observation of the internal structures of the microspheres. The samples were mounted on metal stubs with double-sided adhesive tape and vacuum-sputter-coated with two gold layers prior to the imaging at 5–10 keV.

## Particle or microsphere size distribution

The size distribution and average particle size of the various particle or microsphere preparations were determined using a Particle Size and Shape Analyzer (CIS-100; Ankersmid, Nijverdal, the Netherlands). A 10 mg sample of dry particles



**Figure 1** Schematic diagram showing microsphere preparation.

**Abbreviations:** PLGA, poly(D,L-lactide-co-glycolide); PLA, poly(D,L-lactide); DCM, dichloromethane; MS, microspheres.

or microspheres was re-suspended in the quartz cuvette filled with isopropyl alcohol and stirred with a magnetic bar during the examination.

## Protein content and $\beta$ -galactosidase activity assays

For determining protein content from core-shell microspheres, an accurately weighed 20 mg sample of dry core-shell microspheres was re-dissolved in 6 mL of DCM, and then centrifuged at 12,000 rpm for 5 minutes to remove soluble PLGA and PLA from the mixture and to collect the solid nanoparticles. This washing process was repeated three times, and the nanoparticles were collected after evaporation of dichloromethane residues under a vacuum of 1.33 Pa for 24 hours. Protein-loaded dextran nanoparticles obtained from the microspheres were then dissolved in an appropriate volume of PBS (0.45 mol/L, pH 7.4) and the protein content was determined with a Micro-BCA kit. The amount of protein from each formulation was divided by the amount added in the formulation to give encapsulation efficiency. Loading was calculated using the following equation: loading (%) =  $P/M \times 100$ , where P was the actual total weight of protein encapsulated into core-shell microspheres and M was the actual total weight of the harvested formulation microspheres.<sup>26</sup>

The activity of  $\beta$ -galactosidase from core-shell microspheres was measured as hydrolysis of o-nitrophenyl-D-galactopyranoside (ONPG) as previously described. Briefly, 0.1 mL of a solution of  $\beta$ -galactosidase (authentic or obtained from core-shell microspheres), was added to a reaction mixture consisting of 2.6 mL of PBS buffer (pH 7.3), 0.1 mL of 30 mM  $MgCl_2$ , 0.1 mL of 3.3 mM 2-mercaptoethanol, and 0.1 mL of 68 mM ONPG. The mixed solution was incubated at 37°C for 5 minutes, then immediately cooled to 0°C.  $\beta$ -galactosidase activity was determined from absorbance readings for the reaction product of ONPG at 420 nm.<sup>27</sup>

## Size-exclusion chromatography (SEC)

SEC assay was carried out using an HPLC system (Shimadzu, Kyoto, Japan) equipped with a TSK G2000SWXL size-exclusion column. The mobile phase was composed of 0.15 M sodium chloride and 50 mM sodium phosphate (PBS, pH 7.4). The chromatographic peaks were recorded at 214 nm. The aqueous protein solution sample was filtered through a 0.22  $\mu$ m film and then loaded onto the HPLC column. The flow rate of the mobile phase was 1.0 mL/minute. The amount of monomer or aggregate protein was calculated using Shimadzu Chromato-Solution-Light software (Kyoto, Japan).

## In vitro protein release studies

For determining the protein-release kinetics from core-shell microspheres, 20 mg of core-shell microspheres were incubated in 1 mL release medium (PBS) at 37°C and shaken at 150 rpm (Shanghai Fun Wa KYC 100C; Shanghai, People's Republic of China). The release medium was replaced by the same volume of fresh buffer each day and the protein concentration was assayed using the Micro-BCA or SEC-HPLC method.

## Statistical analysis

The data were expressed as means  $\pm$  standard deviation. Statistical difference was sought using Student's *t*-test. Differences were considered statistically significant for *P* values lower than 0.05.

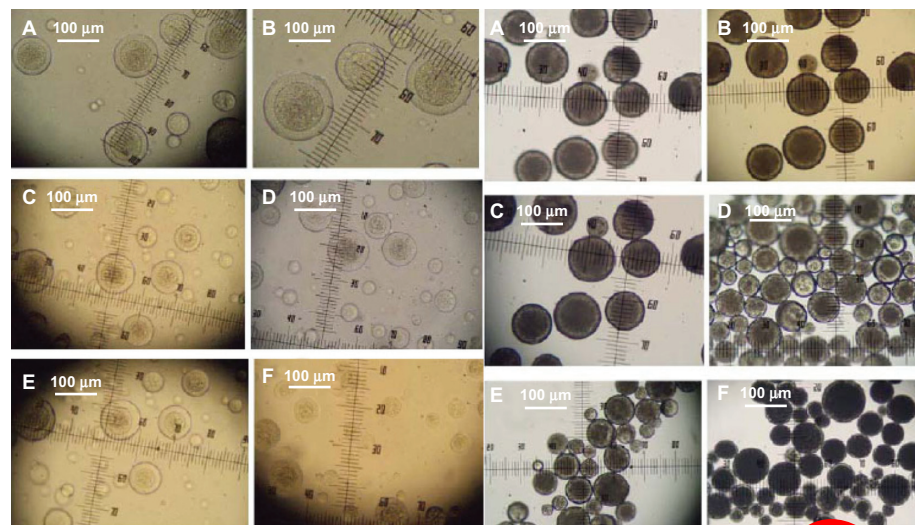
## Results

### Light microscopy analysis of core-shell microspheres

Core-shell microspheres were prepared using a solid-in-oil-in-hydrophilic oil-in-water or solid-in-oil-in-hydrophilic oil-in-ethanol emulsion method.<sup>22,23</sup> The structures of the microspheres appeared as core and shell double-walled spheres (Figure 2 and Figure S1) in the hydrophilic oil phase (un-solidified microspheres) or the water (ethanol) phase (solidified microspheres). The microspheres were prepared using a 1:4:6 weight ratio of BSA-loaded dextran nanoparticles, PLG, and PLA in a concentration range from 12.5% to 25% (w/w) polymer solution in DCM. After the PLG, BSA-loaded dextran nanoparticles, and PLA were thoroughly mixed and added to a hydrophilic oil phase, the PLGA, BSA-loaded dextran nanoparticles, and PLA phase precipitated around the PLGA25 resulting in the core and shell morphology (Figure 2 and Figure S1). The average yield of prepared microspheres was  $\sim 70\% \pm 10\%$  ( $n = 5$ ) from microspheres solidified in a water phase and  $80\% \pm 9\%$  from microspheres solidified in an ethanol phase ( $n = 5$ ). The mean microsphere diameter was  $67 \pm 20 \mu$ m, with the majority of microspheres ranging from 60 to 80  $\mu$ m (Figure 3). SEM of these microspheres showed smooth and non-porous surfaces.

### Protein-loaded dextran nanoparticle localization and polymer orientation of core-shelled microspheres

Light micrographs of core-shell microspheres encapsulating protein-loaded dextran nanoparticles revealed that the protein-loaded dextran nanoparticles were localized within the polymer core (Figures 2 and 4, and Figure S1). BSA-loaded and



I: Microspheres in the hydrophilic oil phase

II: Hardening microspheres in the water phase

**Figure 2** Light microscope images of core-shell microspheres (S/O/O<sub>h</sub>/W). (A) Oil phase (12.5% w/w HPLA/PLGA3A); (B) oil phase (12.5% w/w LPLA/PLGA3A); (C) oil phase (20% w/w HPLA/PLGA2A); (D) oil phase (20% w/w LPLA/PLGA2A); (E) oil phase (25% w/w HPLA/PLGA1A); (F) oil phase (25% w/w LPLA/PLGA1A).

**Notes:** HPLA: poly(D,L-lactide) (High IV) (MW 40,000–75,000 units); LPLA: poly(D,L-lactide) (Low IV) (MW 40,000–75,000 units); PLGA: poly(D,L-lactide-co-glycolide) (PLGA) (lactide:glycolide 3A, [50:50], MW 40,000–75,000 units); PLGA2A: poly(D,L-lactide-co-glycolide) (PLGA) (lactide:glycolide 2A [50:50], MW 20,000 units); PLGA1A: poly(D,L-lactide-co-glycolide) (PLGA) (lactide:glycolide 1A [50:50], MW 6500 units); solid phase: 10 mg protein-loaded dextran nanoparticles (BSA/dextran = 1); hydrophilic oil: EG/G = 4 (5.5 mL containing 0.5 mL 5% w/w PVA and NaCl); oil phase (PLA/PLGA = 60/40, 800 mg PLGA DCM solution).

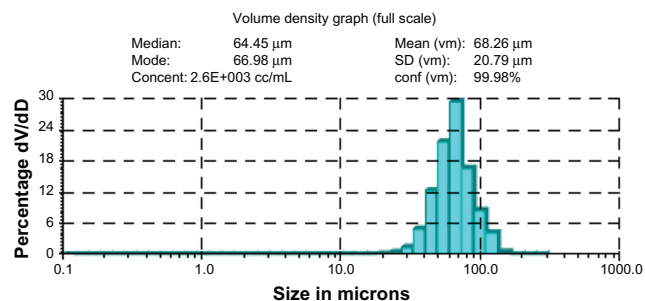
**Abbreviations:** BSA, bovine serum albumin; DCM, dichloromethane; EG, ethylene glycol; G, glycerol; PEG, polyethylene glycol; PLA, poly(D,L-lactide); PVA, polyvinyl alcohols.

myoglobin-loaded nanoparticles were encapsulated into the microspheres, and the protein-loaded nanoparticles were encapsulated within the microsphere core (Figures 2, 4, and Figure S1). The efficiency of core-shell microspheres.

Kokai et al reported that protein (hydrophilic molecule) was easily encapsulated within the PLGA core of core-shell microspheres.<sup>28</sup> We think that protein-loaded dextran nanoparticles were also encapsulated into PLGA cores, because the dextran and protein were also hydrophilic molecules.

## Protein encapsulation efficiency

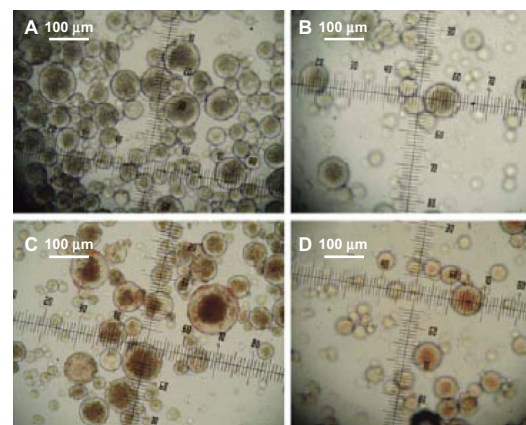
The protein payload and encapsulation efficiency of core-shell microspheres are shown in Tables 1–5. Factors such



**Figure 3** Size distributions of microspheres.

**Note:** The sample is the same as in Figure 2A.

**Abbreviations:** SD, standard deviation; vm, volume.



**Figure 4** Light microscope images of core-shell microspheres. (A) (Dextran/BSA = 1), HPLA/PLGA3A; (C) (dextran/MGB = 1) LPLA/PLGA3A; solid phase: 10 mg protein-loaded dextran nanoparticles (protein/dextran = 1); oil phase: PLA/PLGA3A = 60/40 (800 mg, 12.5% w/w DCM solution); hydrophilic oil: EG/G = 4 (5.7 mL containing 0.7 mL 5% PEG, DCM solvent); ethanol phase: 200 mL. (B) (Dextran/BSA = 1), HPLA/PLGA3A; (D) dextran/MGB = 1; LPLA/PLGA3A.

**Notes:** HPLA: poly(D,L-lactide) (High IV) (MW 40,000–75,000 units); LPLA: poly(D,L-lactide) (Low IV) (MW 40,000–75,000 units); PLGA3A: poly(D,L-lactide-co-glycolide) (PLGA) (lactide:glycolide 3A, [50:50], MW 40,000–75,000 units); solid phase: 10 mg protein-loaded dextran nanoparticles (protein/dextran = 1); oil phase: PLA/PLGA3A = 60/40 (800 mg, 12.5% w/w DCM solution); hydrophilic oil: PG/G = 4 (5.7 mL containing 0.7 mL, 5% w/w PVP, DCM solution); ethanol phase: 200 mL.

**Abbreviations:** BSA, bovine serum albumin; DCM, dichloromethane; EG, ethylene glycol; G, glycerol; PEG, polyethylene glycol; PLA, poly(D,L-lactide); PVA, polyvinyl alcohols.

**Table 1** Effect of surfactant on encapsulation efficiency (n = 5)

Formulation	Encapsulation efficiency
A	89.96% ± 8.64%
B	52.55% ± 0.61%
C	50.34% ± 5.06%
D	46.50% ± 3.40%

**Notes:** Surfactant: A, PVP; B, PVA; C, Pluronic F68; and D, PEG. HPLA: poly(D,L-lactide) (High IV) (MW 40,000–75,000 units); LPLA: poly(D,L-lactide) (Low IV) (MW 40,000–75,000 units); PLGA3A: poly(D,L-lactide-co-glycolide) (PLGA) (lactide:glycolide 3A, [50:50], MW 40,000–75,000 units); solid phase: 15 mg protein-loaded dextran nanoparticles (dextran/BSA = 1); oil phase: PLGA (50/50 3A)/LPLA = 40/60 (1000 mg 12.5% w/w, DCM); hydrophilic oil: EG/G = 4 (5.5 mL containing 0.8 mL 5% w/w surfactant DCM solution); ethanol phase: 200 mL.

**Abbreviations:** BSA, bovine serum albumin; DCM, dichloromethane; EG, ethylene glycol; G, glycerol; PEG, polyethylene glycol; PVA, polyvinyl alcohols; PVP, polyvinylpyrrolidone.

## Effect of surfactant

Table 1 shows that the encapsulation efficiency of core-shell microspheres decreased with surfactant choice, in the following order: PVP > PVA > Pluronic® F68 > PEG, from 89.96% ± 8.64% to 46.50% ± 3.40%.

## Effect of PLA and PLGA

Table 2A shows that the encapsulation efficiency of core-shell microspheres increased with increasing viscosity of PLA solutions in DCM, from 69.52% ± 3.74% to 70.84% ± 3.32%.

Table 2B shows that the encapsulation efficiency of core-shell microspheres increased with the increasing PLGA molecular weight, from 45.91% ± 1.11% to 52.55% ± 0.61%.

## Effect of the ratio of PLGA to PLA

Table 3 shows that the encapsulation efficiency of core-shell microspheres changed with increasing ratios of PLGA to PLA.

## Effect of hydrophilic oil

Table 4A and B shows that the encapsulation efficiency was lower for core-shell microspheres prepared in hydrophilic oil (EG/G = 4, 5.50 mL containing 0.50 mL 4% w/w PVA and NaCl) and hardened in a water phase compared to those

**Table 2A** Effect of PLA viscosity on encapsulation efficiency (n = 5)

Formulation	Encapsulation efficiency
A	70.84% ± 3.32%
B	69.52% ± 3.74%

**Notes:** A, high viscosity; B, low viscosity. HPLA: poly(D,L-lactide) (High IV) (MW 40,000–75,000 units); LPLA: poly(D,L-lactide) (Low IV) (MW 40,000–75,000 units); PLGA3A: poly(D,L-lactide-co-glycolide) (PLGA) (lactide:glycolide 3A, [50:50], MW 40,000–75,000 units); solid phase: 10 mg protein-loaded dextran nanoparticles (dextran/BSA = 1); oil phase: PLGA (50/50 3A)/PLA = 40/60 (1000 mg 12.5% w/w, DCM); hydrophilic oil: EG/G = 4 (5.5 mL containing 0.50 mL 4% w/w PVA and NaCl); water phase: 5% w/w NaCl solution 1000 mL.

**Abbreviations:** BSA, bovine serum albumin; DCM, dichloromethane; EG, ethylene glycol; G, glycerol; PEG, polyethylene glycol; PVA, polyvinyl alcohols; PVP, polyvinylpyrrolidone.

**Table 2B** Effect of PLA viscosity on encapsulation efficiency (n = 5)

Formulation	Encapsulation efficiency
C	52.55% ± 0.61%
D	45.91% ± 1.11%

**Notes:** C, MW of PLGA (50/50 3A, MW: 47,000 Da); D, mol wt of PLGA (50/50 2A, MW: 25,000 Da). HPLA: poly(D,L-lactide) (High IV) (MW 40,000–75,000 units); LPLA: poly(D,L-lactide) (Low IV) (MW 40,000–75,000 units); PLGA3A: poly(D,L-lactide-co-glycolide) (PLGA) (lactide:glycolide 3A, [50:50], MW 40,000–75,000 units); solid phase: 10 mg protein-loaded dextran nanoparticles (dextran/BSA = 1); oil phase: PLGA/PLA = 40/60 (1000 mg 12.5% w/w, DCM); hydrophilic oil: EG/G = 4 (5.5 mL containing 0.5 mL 4% w/w PVA and NaCl); ethanol phase: 200 mL.

**Abbreviations:** BSA, bovine serum albumin; DCM, dichloromethane; EG, ethylene glycol; G, glycerol; PEG, polyethylene glycol; PVA, polyvinyl alcohols; PVP, polyvinylpyrrolidone.

prepared in hydrophilic oil (PG/G = 4, 5.50 mL containing 0.50 mL 4% w/w PVA and NaCl), from 74.88% ± 3.48% to 86.04% ± 0.72%; or from 56.32% ± 7.00% to 86.04% ± 0.72% microspheres hardening in the ethanol phase.

## Effect of protein loading

Table 5A shows that the encapsulation efficiency of high-loading core-shell microspheres prepared in hydrophilic oil (EG/G = 4, 5.50 mL containing 0.50 mL 4% w/w PVA and NaCl) and hardening in water phase is more than low-loading microspheres, from 69.94% ± 3.52% to 86.04% ± 0.72%. The result was also fit for encapsulation efficiency of core-shell microspheres prepared in hydrophilic oil (PG/G = 4.00) (5.50 mL containing 0.80 mL 5% w/w PVP DCM solution) and hardening in water phase (Table 5B).

## Protein-loaded dextran nanoparticles from core-shell microspheres

To examine the changes of the protein-loaded dextran nanoparticles following encapsulation within the core-shell microspheres, the core-shell microspheres were re-dissolved in DCM to remove the PLGA and PLA, and solid particles were collected and viewed by SEM.

**Table 3** Effect of the ratio of PLGA to PLA on encapsulation efficiency (n = 5)

Formulation	Encapsulation efficiency
C	47.52% ± 1.32%
D	69.52% ± 3.74%
E	45.76% ± 1.54%

**Notes:** C, PLGA (50/50 3A)/LPLA = 20/80; D, PLGA (50/50 3A)/LPLA = 40/60; E, PLGA (50/50 3A)/LPLA = 40/80. HPLA: poly(D,L-lactide) (High IV) (MW 40,000–75,000 units); LPLA: poly(D,L-lactide) (Low IV) (MW 40,000–75,000 units); PLGA3A: poly(D,L-lactide-co-glycolide) (PLGA) (lactide:glycolide 3A, [50:50], MW 40,000–75,000 units); solid phase: 10 mg protein-loaded dextran nanoparticles (dextran/BSA = 1); oil phase: PLGA (50/50 3A)/PLA (1000 mg 12.5% w/w, DCM); hydrophilic oil: PG/G = 4 (5.5 mL containing 0.50 mL 4% w/w PVA and NaCl); water phase: 5% w/w NaCl solution 1000 mL.

**Abbreviations:** BSA, bovine serum albumin; DCM, dichloromethane; EG, ethylene glycol; G, glycerol; PEG, polyethylene glycol; PVA, polyvinyl alcohols; PVP, polyvinylpyrrolidone.

**Table 4A** Effect of the hydrophilic oil on encapsulation efficiency (n = 5)

Formulation	Encapsulation efficiency
A	56.32% ± 7.70%
B	91.96% ± 8.64%

**Notes:** A, hydrophilic oil (PG/G = 4); B, hydrophilic oil (EG/G = 4). HPLA: poly(D,L-lactide) (High IV) (MW 40,000–75,000 units); LPLA: poly(D,L-lactide) (Low IV) (MW 40,000–75,000 units); PLGA3A: poly(D,L-lactide-co-glycolide) (PLGA) (lactide:glycolide 3A, [50:50], MW 40,000–75,000 units); solid phase: 20 mg protein-loaded dextran nanoparticles (dextran/BSA = 1); oil phase: PLGA (50/50 3A)/LPLA = 40:60 (1000 mg 12.5% w/w, DCM); hydrophilic oil: 5.5 mL containing 0.8 mL 5% w/w PVP DCM solution; ethanol phase: 200 mL.

**Abbreviations:** BSA, bovine serum albumin; DCM, dichloromethane; EG, ethylene glycol; G, glycerol; PEG, polyethylene glycol; PVA, polyvinyl alcohols; PVP, polyvinylpyrrolidone.

Figure 5 shows that the morphology of the nanoparticles was unchanged.

## Aggregations of protein from core-shell microspheres

To evaluate protein aggregation, the protein from core-shell microspheres and the original protein solution were assessed using SEC-HPLC. Protein aggregation was unchanged from 82.13% ± 5.23% monomer BSA to 82.08% ± 4.96% monomer BSA; 96.52% ± 4.21% monomer myoglobin to 96.08% ± 5.32% monomer myoglobin (Figure 6).

## β-galactosidase activity from core-shell microspheres

The activity of β-galactosidase was assessed immediately from β-galactosidase-loaded dextran nanoparticles and again following encapsulation within the core-shell microspheres. The enzyme activity was not significantly different from that measured using freshly dissolved β-galactosidase (Table 6,  $P = 0.75$ ).

## In vitro protein release

The release efficacy from core-shell microspheres was examined by investigating the effects of surfactant, hydrophilic oil,

**Table 4B** Effect of the hydrophilic oil on encapsulation efficiency (n = 5)

Formulation	Encapsulation efficiency
C	74.88% ± 3.48%
D	86.04% ± 0.72%

**Notes:** C, hydrophilic oil (PG/G = 4); D, hydrophilic oil (EG/G = 4). HPLA: poly(D,L-lactide) (High IV) (MW 40,000–75,000 units); LPLA: poly(D,L-lactide) (Low IV) (MW 40,000–75,000 units); PLGA3A: poly(D,L-lactide-co-glycolide) (PLGA) (lactide:glycolide 3A, [50:50], MW 40,000–75,000 units); solid phase: 20 mg protein-loaded dextran nanoparticles (dextran/BSA = 1); oil phase: PLGA (50/50 3A)/LPLA = 40:60 (1000 mg 12.5% w/w, DCM); hydrophilic oil: 5.5 mL containing 0.5 mL 4% w/w PVA and NaCl; water phase: 5% w/w NaCl solution 1000 mL.

**Abbreviations:** BSA, bovine serum albumin; DCM, dichloromethane; EG, ethylene glycol; G, glycerol; PEG, polyethylene glycol; PVA, polyvinyl alcohols; PVP, polyvinylpyrrolidone.

**Table 5A** Effect of protein loading on encapsulation efficiency (n = 5)

Formulation	Loading	Encapsulation efficiency
A	3.49% ± 0.18%	69.94% ± 3.52%
B	8.60% ± 0.72%	86.04% ± 0.72%

**Notes:** A, solid phase: 10 mg protein-loaded dextran nanoparticles; B, 20 mg protein-loaded dextran nanoparticles. HPLA: poly(D,L-lactide) (High IV) (MW 40,000–75,000 units); LPLA: poly(D,L-lactide) (Low IV) (MW 40,000–75,000 units); PLGA3A: poly(D,L-lactide-co-glycolide) (PLGA) (lactide:glycolide 3A, [50:50], MW 40,000–75,000 units); solid phase: protein-loaded dextran nanoparticles (dextran/BSA = 1); oil phase: PLGA (50/50 3A)/HPLA = 40:60 (1000 mg 12.5% w/w, DCM); hydrophilic oil: EG/G = 4 (5.5 mL containing 0.5 mL 4% PVA and NaCl); water phase: 5% NaCl solution 1000 mL.

**Abbreviations:** BSA, bovine serum albumin; DCM, dichloromethane; EG, ethylene glycol; G, glycerol; PEG, polyethylene glycol; PVA, polyvinyl alcohols; PVP, polyvinylpyrrolidone.

and protein-loaded dextran nanoparticle loading on in vitro protein release.

## Effect of hydrophilic oil

Figure 7A and B show the long-term release kinetics for BSA from core-shell microspheres made using different hydrophilic oils (PG/G and EG/G, respectively) and hardening in an ethanol phase of 200 mL. Core-shell microspheres prepared with PG/G and EG/G oils showed a burst release near 22% w/w and 20% w/w, respectively; followed by a gradual release, reaching 86% w/w and 85% w/w of the loaded amount, respectively, over the next 60 days. This is possibly because the hydrophilic property of hydrophilic oil from EG/G is better than the hydrophilic oil from PG/G. It is easier for the hydrophilic oil (EG/G) phase to form interfaces with PLGA/PLA DCM oil phase than hydrophilic oil phase from PG/G.

## Effect of protein-loaded dextran nanoparticles loading

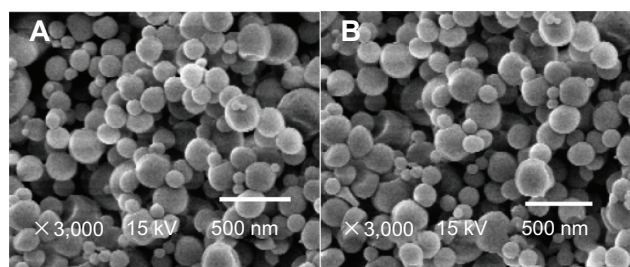
Core-shell microspheres prepared with low and high loading of protein-loaded dextran nanoparticles showed a burst release of about 9% w/w and 20% w/w, followed by

**Table 5B** Effect of protein loading on encapsulation efficiency (n = 5)

Formulation	Loading	Encapsulation efficiency
C	3.28% ± 0.19%	65.52% ± 3.74%
D	7.59% ± 0.34%	75.88% ± 3.48%

**Notes:** C, solid phase: 10 mg protein-loaded dextran nanoparticles; D, 20 mg protein-loaded dextran nanoparticles. HPLA: poly(D,L-lactide) (High IV) (MW 40,000–75,000 units); LPLA: poly(D,L-lactide) (Low IV) (MW 40,000–75,000 units); PLGA3A: poly(D,L-lactide-co-glycolide) (PLGA) (lactide:glycolide 3A, [50:50], MW 40,000–75,000 units); solid phase: protein-loaded dextran nanoparticles (dextran/BSA = 1); oil phase: PLGA (50/50 3A)/LPLA = 40:60 (1000 mg 12.5% w/w, DCM); hydrophilic oil: PG/G = 4 (5.5 mL containing 0.8 mL 5% w/w PVP DCM solution); water phase: 5% NaCl solution 1000 mL.

**Abbreviations:** BSA, bovine serum albumin; DCM, dichloromethane; EG, ethylene glycol; G, glycerol; PEG, polyethylene glycol; PVA, polyvinyl alcohols; PVP, polyvinylpyrrolidone.



**Figure 5** Scanning electron microscopy of protein-loaded dextran nanoparticles. **(A)** Original nanoparticles and **(B)** core-shell microspheres.

**Notes:** **(A)** Protein-loaded dextran nanoparticles; **(B)** protein-loaded dextran nanoparticles from core-shell microspheres (sample: Figure 2A).

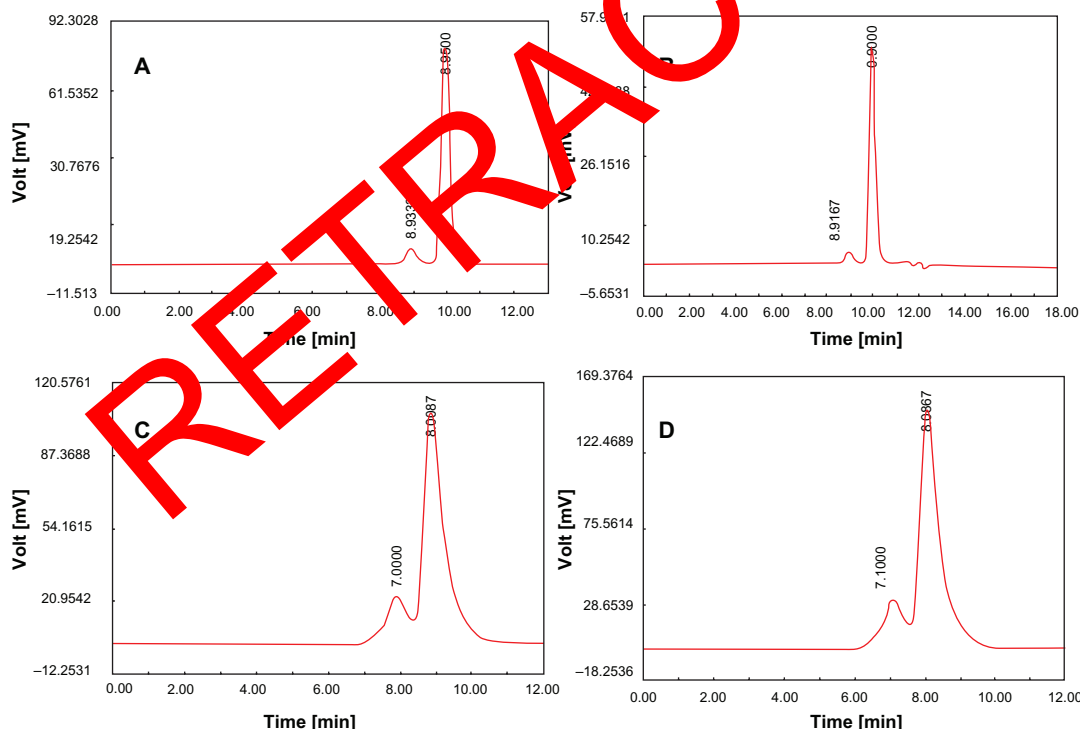
a controlled or sustained release of BSA up to 95% of the loaded dose for 60 days, respectively (Figure 8A and B). Core-shell microspheres with low- and high-loading protein-loaded dextran nanoparticles using PG/G and EG/G hydrophilic oil showed a burst release of 18% w/w and 43% w/w, followed by a sustained release of BSA up to 95% of the loaded dose in the next 60 days (Figure 8C and D). However, the burst release was greater for microspheres made from PG/G than from EG/G hydrophilic oil (Figure 8).

## Core-shell microsphere effect on the ratio and concentration of PLA and PLGA

Figure 9 shows the effect of the ratio of PLA to PLGA on distribution for protein-loaded dextran nanoparticles and formation of core-shell microspheres. The distribution of nanoparticles ranged from whole microsphere, core, to edge, and from core, edge, to whole microsphere, with decreases in the ratio of PLA to PLGA. Figure 9E shows core and shell walls of the microsphere.

## Discussion

In 1989, Mathiowitz and Langer developed a novel method for the preparation of core-shell microspheres for use as a controlled drug delivery system. Their protocol used two polymers to form a core and shell morphology through phase separation.<sup>29</sup> Since then, core-shell microspheres have been developed for controlled size distribution,<sup>30</sup> improved release kinetics, and enhanced biocompatibility and toxicological safety, etc.<sup>31</sup> However, the above researchers investigated the core-shell microsphere system for protein delivery using the water-in-oil-in-water (W/O/W) and water-in-oil-in-oil



**Figure 6** Spectra of recovery proteins from PLGA microspheres by SEC-HPLC. **(A)** Original myoglobin; **(B)** myoglobin from core-shell double-walled microspheres. [LPLA: poly(D,L-lactide) (Low IV) (MW 40,000–75,000 units); PLGA3A: poly(D,L-lactide-co-glycolide) (PLGA) (lactide:glycolide 3A, [50:50], MW 40,000–75,000 units); solid phase: 10 mg protein-loaded dextran nanoparticles (protein/dextran = 1); oil phase: PLA/PLGA3A = 60/40 (800 mg, 12.5% w/w DCM solution); hydrophilic oil: PG/G = 4 (5.7 mL containing 0.7 mL, 5% w/w PVP, DCM solution); ethanol phase: 200 mL; (dextran/MGB = 1) LPLA/PLGA3A]; **(C)** Original BSA; and **(D)** BSA from core-shell double-walled microspheres [LPLA: Poly(D,L-lactide) (Low IV) (MW 40,000–75,000 units); PLGA3A: poly(D,L-lactide-co-glycolide) (PLGA) (lactide:glycolide 3A, [50:50], MW 40,000–75,000 units); solid phase: 10 mg protein-loaded dextran nanoparticles (BSA/dextran = 1); hydrophilic oil:EG/G = 4 (5.5 mL containing 0.5 mL 5% w/w PVA and NaCl); oil phase (12.50% w/w LPLA/PLGA3A)].

**Abbreviations:** BSA, bovine serum albumin; DCM, dichloromethane; EG, ethylene glycol; G, glycerol; PEG, polyethylene glycol; PVA, polyvinyl alcohols; PVP, polyvinylpyrrolidone.



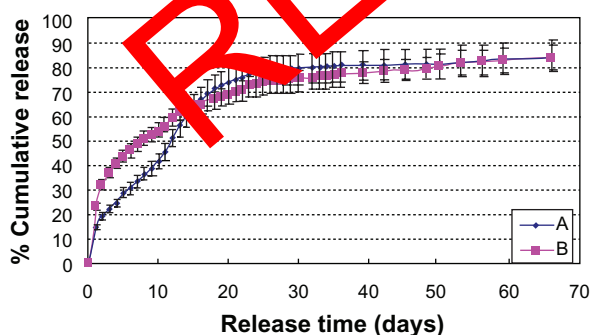
**Table 6**  $\beta$ -Galactosidase activity from core-shell microspheres (n = 5, P = 0.75)

$\beta$ -galactosidase	Activity
Original $\beta$ -galactosidase solution	98% $\pm$ 5.19%
Core-shell microspheres	97% $\pm$ 7.34%

(W/O/O) double emulsion method, which required the protein solution to be added directly to a PLGA organic solvent and resulted in loss of bioactivity. To overcome the problems, we developed a novel S/O/O/W multi-emulsion method for protein delivery systems, but the method is still flawed in terms of initial burst release.<sup>25</sup> So, we tried to develop a novel core-shell microsphere preparation method where the protein was first loaded into dextran nanoparticles and then encapsulated within core-shell microspheres using a solid-in-oil-in-hydrophilic oil-in-water (ethanol) (S/O/O<sub>n</sub>/W [E]) process.

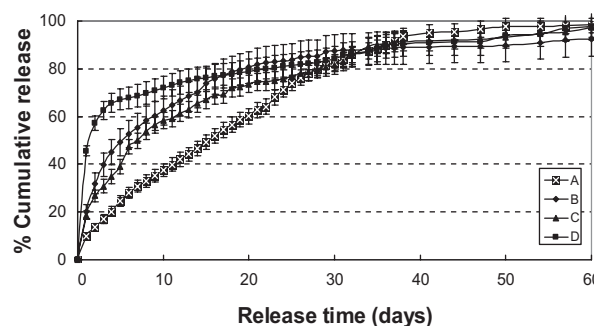
The formation of protein-loaded dextran nanoparticles or microparticles using aqueous phase–aqueous phase emulsions or low freezing phase separation methods has been investigated as a way to protect proteins during the encapsulation procedure.<sup>21–24</sup> The protein-loaded dextran nanoparticles formed through a low freezing phase separation method were chosen for use in this study because these are small size particles. The small size of the protein-loaded dextran nanoparticles was hypothesized to help in distribution within the initial PLGA solution, which would lead to a decrease in protein aggregation and therefore an improvement in retention of protein bioactivity.

An aqueous protein solution will readily self-assemble into a PLGA core using the oil-in-oil-in-water (O/O/W) or water-in-oil-

**Figure 7** Effect of hydrophilic oil on in vitro release (n = 5). A, hydrophilic oil (PG/G = 4); B, hydrophilic oil (EG/G = 4).

**Notes:** HPLA: poly(D,L-lactide) (High IV) (MW 40,000–75,000 units); LPLA: poly(D,L-lactide) (Low IV) (MW 40,000–75,000 units); PLGA3A: poly(D,L-lactide-co-glycolide) (PLGA) (lactide:glycolide 3A, [50:50], MW 40,000–75,000 units); solid phase: 20 mg protein-loaded dextran nanoparticles (dextran/BSA = 1); oil phase: PLGA (50/50 3A)/LPLA = 40:60 (1000 mg 12.5% w/w, DCM); hydrophilic oil: 5.5 mL containing 0.8 mL 5% w/w PVP DCM solution; ethanol phase: 200 mL.

**Abbreviations:** BSA, bovine serum albumin; DCM, dichloromethane; PVP, polyvinyl-pyrrolidone.

**Figure 8** The effect of protein-loaded dextran nanoparticles loading on in vitro protein release (n = 5). (A) Solid phase: 10 mg protein-loaded dextran nanoparticles; (B) 20 mg protein-loaded dextran nanoparticles. Solid phase: protein-loaded dextran nanoparticles (dextran/BSA = 1); oil phase: PLGA (50/50 3A)/LPLA = 40:60 (1000 mg 12.5% w/w, DCM); hydrophilic oil: PG/G = 4 (5.5 mL containing 0.8 mL 5% w/w PVP DCM solution); water phase: 5% NaCl solution 1000 mL; (C) solid phase: 10 mg protein-loaded dextran nanoparticles; (D) 20 mg protein-loaded dextran nanoparticles.

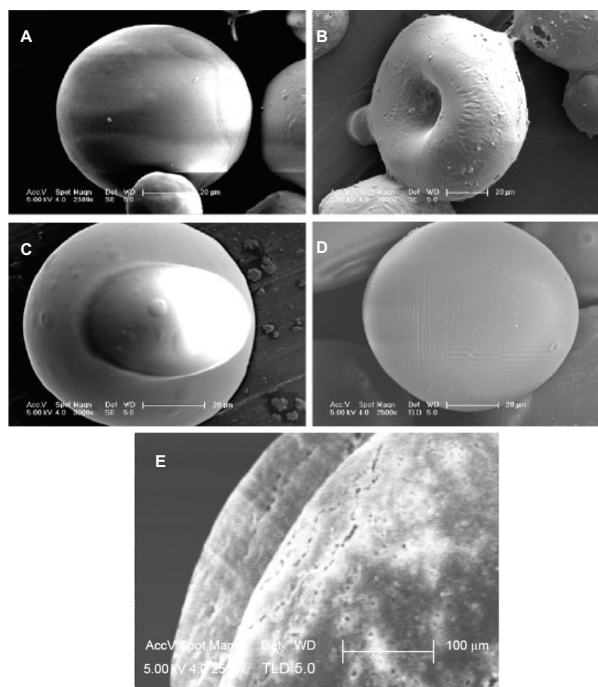
**Notes:** HPLA: poly(D,L-lactide) (High IV) (MW 40,000–75,000 units); LPLA: poly(D,L-lactide) (Low IV) (MW 40,000–75,000 units); PLGA3A: poly(D,L-lactide-co-glycolide) (PLGA) (lactide:glycolide 3A, [50:50], MW 40,000–75,000 units); solid phase: protein-loaded dextran nanoparticles (dextran/BSA = 1); oil phase: PLGA (50/50 3A)/HPLA = 40:60 (1000 mg 12.5% w/w, DCM); hydrophilic oil: EG/G = 4 (5.5 mL containing 0.8 mL 4% PVA and NaCl); water phase: 5% NaCl solution 1000 mL.

**Abbreviations:** BSA, bovine serum albumin; DCM, dichloromethane; EG, ethylene glycol; G, glycerol; PG, polyethylene glycol; PVA, polyvinyl alcohols; PVP, polyvinyl-pyrrolidone.

oil (W/O/O) double emulsion process.<sup>9</sup> However, the question of whether protein-loaded dextran nanoparticles will distribute into a PLGA core using solid-in-oil-in-water (S/O/W) or solid-in-oil-in-oil (S/O/O) double emulsion remained unanswered. We addressed this question by two methods and confirmed that nanoparticles could be distributed into a PLGA core.

The ratio of PLA to PLGA affected the distribution of the protein-loaded dextran nanoparticles within the microsphere (Figures 9 and Figure S3). When the amount of PLGA was low, no phase separation occurred between PLA and PLGA. When matched amounts of PLGA were supplied, both polymer phases separated. Because the nanoparticles were hydrophilic and readily interacted with hydrophilic PLGA, this resulted in the nanoparticles localizing within the core of the microspheres. When the amount of PLGA was equivalent, the PLGA microspheres could not engulf the PLA microspheres, which resulted in localization of the nanoparticles on the edges of the core-shell microspheres.

When the amount of PLGA was high, the PLA and PLGA again could not undergo phase separation, but the nanoparticles appeared within whole microspheres. These effects were probably due to the similar hydrophilicities of dextran nanoparticles and the PLGA solution, which resulted in more dextran nanoparticle distribution within the PLGA core of microspheres and fewer nanoparticles on the surface and shell of the microspheres. The nanoparticles on the surface



**Figure 9** Scanning electron microscopy of microspheres formed using different ratios of PLGA and PLA (S/O/O<sub>n</sub>/W). (A) PLA/PLGA = 80/20; (B and C) PLA/PLGA = 50/50; (D) PLA/PLGA = 80/40; (E) cross-sectional images of core-shell double-walled polymer microspheres (PLA/PLGA = 60/40).

**Notes:** LPLA: Poly(D,L-lactide) (Low IV) (MW 40,000–75,000 units); PLGA3A: poly(D,L-lactide-co-glycolide) (PLGA) (lactide:glycolide 3A, [50:50], MW 40,000–75,000 units); solid phase: 10 mg protein-loaded dextran nanoparticles (dextran BSA = 1.00); oil phase: PLGA (50/50 3A)/LPLA (1000 mg 12.50% w/w, DCM), hydrophilic oil: EG/G = 4.00 (5.50 mL containing 0.50 mL 4% PVA and NaCl); water phase: 5% NaCl solution 1000 mL.

**Abbreviations:** BSA, bovine serum albumin; DCM, dichloromethane; EG, ethylene glycol; G, glycerol; PVA, polyvinyl alcohols.

and shell would directly encounter the oil-water interfaces, which would lead to loss of protein bioactivities.

Encapsulation efficiency was also greatly affected by different surfactants, the molecular weight of PLGA and PLA, the ratio of PLGA to PLA, loading, and the formulation of the hydrophilic oil used during the process of fabrication. The best results occurred when the following conditions were met: (1) the activities and film-forming properties of the surfactants were optimal; (2) the viscosities and the ratios of PLGA and PLA were matched; (3) the protein loading was matched; (4) the hydrophilicity of the hydrophilic oil phase was optimal.

The protein-release kinetics in vitro from core-shell microspheres was also affected by many factors such as surfactant, hydrophilic oil choice, and protein-loaded dextran nanoparticle loading. When the activities and film-forming properties of surfactants were excellent, the release kinetics in vitro were also excellent and showed low burst release (eg, PVP in Figure S2). It is possible that protein release from protein-loaded dextran nanoparticles adsorbed to the PLA surface differed from that released from within the PLA

shell. In addition, PEG could enhance the porosity of the microspheres, resulting in a burst release pattern in the order of PVP < Pluronic F68 < PEG (Figure S2).

When the hydrophilicities of the hydrophilic oil phase and the polymer organic solution phases were different, the release kinetics were also different (Figures 7 and 8). The in vitro release kinetics were close to zero order, possibly because: (1) a better choice of hydrophilic oil phase, surfactant, and loading resulted in more nanoparticles encapsulated within the PLGA core and fewer on the shell and surface; (2) the release kinetics profile for BSA reveals that protein was delivered first from the surface of the microsphere and then from within the PLA shell, followed by formation of macropores in the PLA microsphere shells and slow rupture. The slow, zero-order release of BSA between day 1 and day 40 reflects the high water uptake of the inner PLGA core and dextran and the beginning of swelling and dissolution, resulting in short-term change in the amount of BSA diffused into the external water phase. Increasing osmotic pressure, in addition to the molecular weight of dextran being greater than that of BSA, and bulk degradation of the PLGA core by hydrolytic degradation eventually resulted in an increased rate of BSA diffusion into the external water phase from the core; these factors led to the release-kinetics profile observed.

Figure 8 shows the in vitro release profiles of low- and high-loading protein-loaded dextran nanoparticles. Burst release was lower with low loading than with high loading. This was probably because more high-loading particles distributed near the surfaces and shells of the microspheres. We observed that the nanoparticles were distributed near the surfaces and shell with the high-loading microspheres (Figure S5A and B).

## Conclusion

Core-shell microspheres were prepared using solid-in-oil-in-hydrophilic oil-in-water or ethanol (S/O/O<sub>n</sub>/W or E). Initial studies with microspheres encapsulating BSA-loaded dextran nanoparticles and horse myoglobin-loaded dextran nanoparticles indicated that protein-loaded dextran nanoparticle localization was restricted to the PLGA core. The recovered nanoparticles from the microspheres indicated that the encapsulated dextran nanoparticles almost changed. In addition, protein release studies were performed using core-shell microspheres with the model protein BSA-loaded dextran nanoparticles encapsulated using different surfactants and loadings, etc. The results confirmed that protein could achieve zero-order release for at least 40 days by adjusting different surfactants, loadings et al. Based on these results, it is suggested that the method could be used to create potential vehicles for long-efficacy delivery of protein drugs and cell factors.

## Acknowledgments

Weien Yuan performed all tests and experiments; data analysis and interpretation were performed by Zhenguo Liu.

The study was supported by the Project of National Science Foundation of China Committee (81071025 and 81171203), Shanghai Science and Technology Committee of Science and Technology Special Nanotechnology Grant (No. 1052nm03900 and No. 11nm0503300), the Key Foundational Program of the Shanghai Committee of Science and Technology, China (No. 09JC14 11000), PhD Programs Foundation of Ministry of Education of China (No. 20090073120085), and University Student Renovation Project of Shanghai Jiao Tong University (IPP2090). And we also appreciate the generous help from faculty members of the Institute of Instrumental Analysis Centre (IAC) of Shanghai Jiao Tong University.

## Disclosure

The authors report no competing financial interests in this work.

## References

- Wise DL, Trantolo DJ, Marino RT, Kitchell JP. Opportunities and challenges in the design of implantable biodegradable polymeric systems for the delivery of anti-microbial agents and vaccines. *Adv Drug Deliv Rev.* 1987;1:19–39.
- Patel ZS, Yamamoto M, Ueda H, Tabata Y, Mikos AG. Biodegradable gelatin microparticles as delivery systems for the controlled release of bone morphogenetic protein-2. *Acta Biomater.* 2008;4(11):1110–1138.
- Lee GS, Park JH, Shin US, Kim HW. Direct deposited porous scaffolds of calcium phosphate cement with alginate for drug delivery in bone tissue engineering. *Acta Biomater.* 2011;7:3178–3187.
- King WJ, Toepke MW, Murphy WJ. Facile formation of dynamic hydrogel microspheres for triggered growth factor delivery. *Acta Biomater.* 2011;7:975–985.
- Cleland JL, Lim A, Barron JL, Duenas ET, Powell MF. Development of a single-shot subunit vaccine for HIV-1: Part 4. Optimizing microencapsulation and controlled release of MDPgp120 from biodegradable microspheres. *J Control Release.* 1999;47:135–150.
- Cleland JL. Single-adjuvantation vaccines: controlled-release technology to mimic repeated immunizations. *Trends Biotechnol.* 1999;17:25–29.
- Jain R, Shah N, Marik A, Rhodes C. Controlled drug delivery by biodegradable poly(ester) devices: different preparative approaches. *Drug Dev Ind Pharm.* 1998;24(8):703–727.
- Fu K, Harrell R, Zinski K, et al. A potential approach for decreasing the burst effect of protein from PLGA microspheres. *J Pharm Sci.* 2003;92(8):1582–1591.
- Rothstein SN, Federspiel WJ, Little SR. A simple model framework for the prediction of controlled release from hydrated biodegradable polymer matrices. *J Mat Chem.* 2008;18:1873–1880.
- Rothstein SN, Federspiel WJ, Little SR. A unified mathematical model for the prediction of controlled release from surface and bulk eroding polymer matrices. *Biomaterials.* 2009;30(8):1657–1664.
- van de Weert M, Hennink WE, Jiskoot W. Protein instability in poly(lactic-co-glycolic acid) microparticles. *Pharm Res.* 2000;17(10):1159–1167.
- Ciombor DM, Jaklencic A, Liu AZ, et al. Encapsulation of BSA using a modified W/O/O emulsion solvent removal method. *J Microencapsul.* 2006;23(2):183–194.
- Lee WL, Loei C, Widjaja E, Loo SCJ. Altering the drug release profiles of double-layered ternary-phase microparticles. *J Control Release.* 2011;151:229–238.
- Srinivasan C, Katare YK, Muthukumaran T, Panda AK. Effect of additives on encapsulation efficiency, stability and bioactivity of entrapped lysozyme from biodegradable polymer particles. *J Microencapsul.* 2005;22(2):127–138.
- Choi DH, Park CH, Kim IH, Chun HJ, Park K, Han DK. Fabrication of core-shell microcapsules using PLGA and alginate for dual growth factor delivery system. *J Control Release.* 2010;147:193–201.
- Lee TH, Wang J, Wang C-H. Double-walled microspheres for the sustained release of a highly water soluble drug: characterization and irradiation studies. *J Control Release.* 2002;83(3):437–452.
- Tan EC, Lin R, Wang C-H. Fabrication of double-walled microspheres for the sustained release of doxorubicin. *J Colloid Interface Sci.* 2005;291(1):135–143.
- Babu VR, Sairam M, Hosamani KM, Aminabhavi TM. Development of 5-fluorouracil loaded poly(acrylamide-co-methylmethacrylate) novel core-shell microspheres: In vitro release studies. *Int J Pharm.* 2006;325:55–62.
- Berkland C, Cox A, Kim K, Pack DW. Three-month, zero-order piroxicam release from monodispersed double-walled microspheres of controlled shell thickness. *Biomed Mater Res.* 2004;70(4):576–584.
- Matsumoto A, Masukawa Y, Suzuki T, Yoshino H, Kobayashi M. The polymer albumin method as a new preparation method of biodegradable microspheres. Principle and application to cisplatin-loaded microspheres. *J Control Release.* 1997;48:19–27.
- Jin T, Zhu J, Wu F, Yuan W, Zhu H, Geng L. Preparing polymer-based sustained-release systems without exposing protein to water-oil or water-air interface and cross-linking reagents. *J Control Release.* 2008;128(1):50–59.
- Yuan W, Geng Y, Wu F, et al. Preparation of polysaccharide glassy nanoparticles with stabilization of proteins. *Int J Pharm.* 2009;366:154–159.
- Yuan W, Wu F, Geng Y, Xu S, Jin T. Preparation of dextran glassy particles through freezing-induced phase separation. *Int J Pharm.* 2007;339:76–83.
- Ren T, Yuan W, Zhao H, Jin T. Sustained-release polylactide-co-glycolide microspheres loaded with pre-formulated protein polysaccharide nanoparticles. *Micro Nano Lett.* 2011;6(2):70–74.
- Yuan W, Wu F, Guo M, Jin T. Development of protein delivery microsphere system by a novel S/O/O/W multi-emulsion. *Eur J Pharm Sci.* 2009;36:212–218.
- Yuan W, Zhang Y, Wu F, et al. Preparation of protein-loaded sustained-release microspheres via “solid-in-oil-in-hydrophilic oil-in-ethanol (S/O/hO/E)” emulsification. *Colloids Surf B Biointerfaces.* 2010;79(2):326–333.
- Volkin DB, Klibanov AM. Minimizing protein inactivation. In: Creighton TE, editor. *Protein Function: A Practical Approach.* Oxford: Information Press, 1989:1–24.
- Kokai LE, Huaping T, Jhunjunwala S, Little SR, Frank JW, Marra KG. Protein bioactivity and polymer orientation is affected by stabilizer incorporation for double-walled microspheres. *J Control Release.* 2010;141:168–176.
- Mathiowitz E, Langer R. Preparation of multiwall polymeric microcapsules from hydrophilic polymers, United States Patent (5985354), August 29, 1989.
- Berkland C, Pollauf E, Pack DW, Kim K. Uniform double-walled polymer microspheres of controllable shell thickness. *J Control Release.* 2004;96:101–111.
- Anderson JM, Shive MS. Biodegradation and biocompatibility of PLA and PLGA microspheres. *Adv Drug Deliv Rev.* 1997;28(1):5–24.

## Supplementary data

### Effect of surfactant

Figure S2 shows the long-term release kinetics for BSA from core-shell microspheres made using different surfactants (PVP, Pluronic F68, and PEG) in PBS (pH 7.4). Core-shell microspheres prepared with PEG showed a high burst release (near 60% w/w) followed by a gradual release, reaching 98% w/w of the loaded amount over the next 60 days. Microspheres made with Pluronic F68 and PVP showed high burst release near 40% w/w and near 20% w/w, respectively; followed by a gradual release, reaching 80% w/w and 82% w/w of the loaded amount, respectively, over the next 60 days.

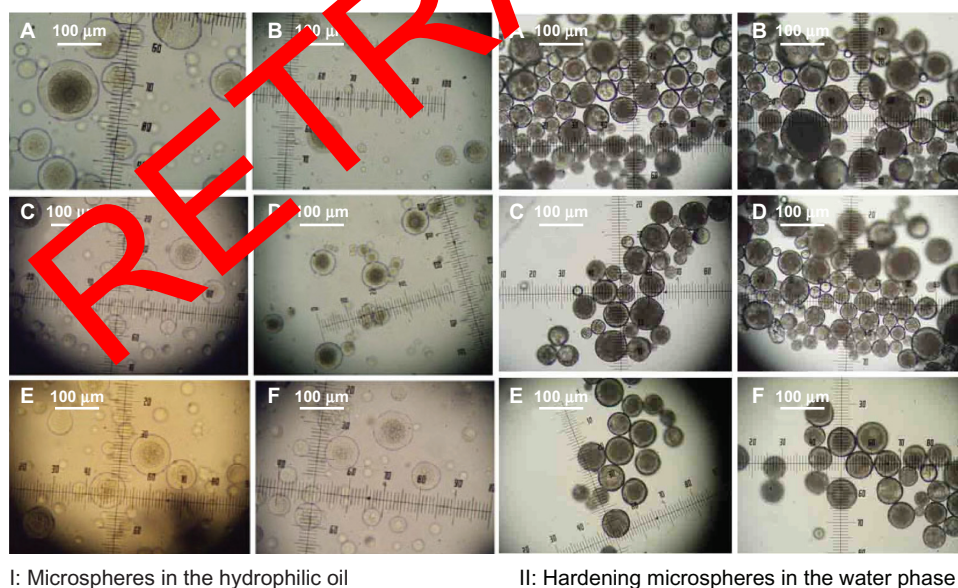
### Effect of hydrophilic oil

#### Core-shell microsphere effect on the ratio and concentration of PLA and PLGA

Figure S3 shows the effect of the ratio of PLA to PLGA on distribution for protein-loaded dextran nanoparticles and

formation of core-shell microspheres. The distribution of nanoparticles ranged from whole microsphere, core, to edge, and from core, edge, to whole microsphere, with decreases in the ratio of PLA to PLGA.

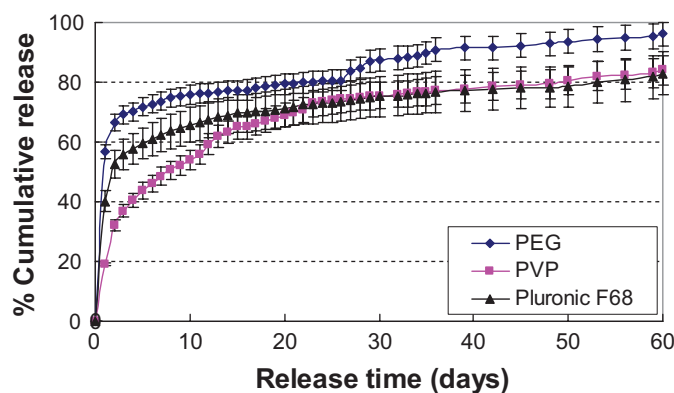
Figure S4 shows that when the concentration of PLGA and PLA was more than 12.5% w/w, the protein-loaded dextran nanoparticles were distributed in the PLGA core of the microspheres and formed core-shell microspheres. The result was the same as the formation of core-shell microspheres using the phase separation method according to the phase separation of PLGA and PLA at certain concentrations. However, the nanoparticles were distributed near the surfaces and shell with the high-loading microspheres.



**Figure S1** Light microscope images of core-shell microspheres. (A) oil phase (12.5% w/w HPLA/PLGA3A); (B) oil phase (12.5% w/w LPLA/PLGA3A); (C) oil phase (20% w/w HPLA/PLGA2A); (D) oil phase (20% w/w LPLA/PLGA2A); (E) oil phase (25% w/w HPLA/PLGA1A); (F) oil phase (25% w/w LPLA/PLGA1A = 60/40).

**Notes:** HPLA: poly(D,L-lactide) (High IV) (MW 40,000–75,000 units); LPLA: poly(D,L-lactide) (Low IV) (MW 40,000–75,000 units); PLGA3A: poly(D,L-lactide-co-glycolide) (PLGA) (lactide:glycolide 3A, [50:50], MW 40,000–75,000 units); PLGA2A: poly(D,L-lactide-co-glycolide) (PLGA) (lactide:glycolide 2A (50:50), MW 20000 units); PLGA1A: poly(D,L-lactide-co-glycolide) (PLGA) (lactide:glycolide 1A (50:50), MW 6500 units); solid phase: 10 mg protein-loaded dextran nanoparticles (BSA/dextran = 1); hydrophilic oil: PG/G = 4 (5.5 mL containing 0.5 mL 5% w/w PVA and NaCl); oil phase: (PLA/PLGA = 60/40, 800 mg, DCM solution).

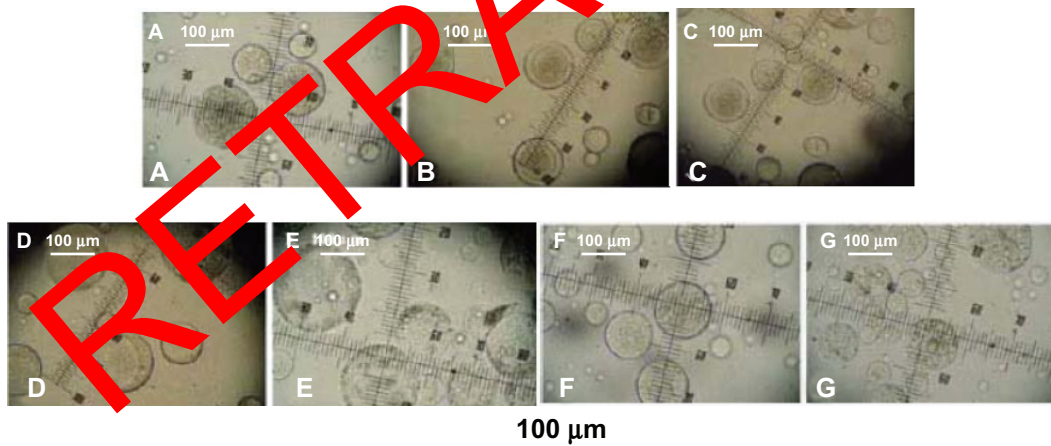
**Abbreviations:** BSA, bovine serum albumin; DCM, dichloromethane; PG, 1,2-propylene glycol; G, glycerol; PLA, poly(D,L-lactide); PVA, polyvinyl alcohols.



**Figure S2** Effect of surfactant on in vitro protein release (n = 5).

**Notes:** HPLA: poly(D,L-lactide) (High IV) (MW 40,000–75,000 units); LPLA: poly(D,L-lactide) (Low IV) (MW 40,000–75,000 units); PLGA3A: poly(D,L-lactide-co-glycolide) (PLGA) (lactide:glycolide 3A, (50:50), MW 40,000–75,000 units); solid phase: 15 mg protein-loaded dextran nanoparticles (dextran/BSA = 1); oil phase: PLGA (50/50 3A)/LPLA = 40/60 (1000 mg 12.5% w/w, DCM); hydrophilic oil: EG/G = 4 (5.5 mL containing 0.8 mL 5% w/w surfactant DCM solution); total oil phase: 200 mL; surfactant: PVP, Pluronic F68 and PEG.

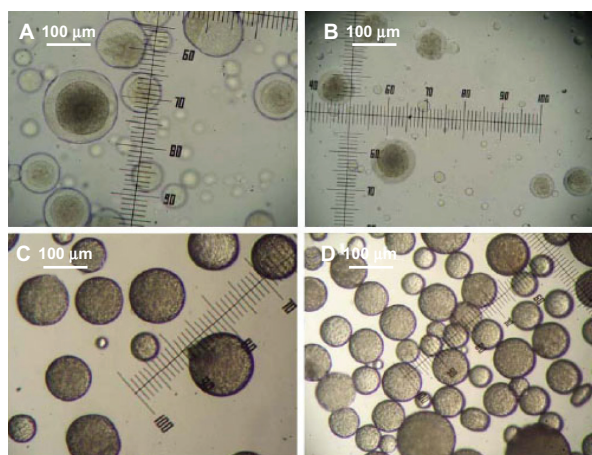
**Abbreviations:** BSA, bovine serum albumin; DCM, dichloromethane; EG, ethylene glycol; G, glycerol; PEG, polyethylene glycol; PLA, poly(D,L-lactide); PVA, polyvinyl alcohols.



**Figure S3** Light microscope images of microspheres formed using different ratios of PLGA and PLA. (A) PLGA/PLA = 80/20; (B) PLGA/PLA = 80/40; (C) PLGA/PLA = 60/40; (D) PLGA/PLA = 50/50; (E) PLGA/PLA = 40/60; (F) PLGA/PLA = 40/80; and (G) PLGA/PLA = 20/80; (G) solid phase: 10 mg protein-loaded dextran nanoparticles (dextran/BSA = 1.00); oil phase: LPLA/PLGA (50/50 3A) = 60/40 (1000 mg 12.50% w/w, DCM); water phase: 5% NaCl and 4% PVA solution 1000 mL.

**Notes:** HPLA: poly(D,L-lactide) (High IV) (MW 40,000–75,000 units); LPLA: poly(D,L-lactide) (Low IV) (MW 40,000–75,000 units); PLGA3A: poly(D,L-lactide-co-glycolide) (PLGA) (lactide:glycolide 3A [50:50], MW 40,000–75,000 units); PLGA2A: poly(D,L-lactide-co-glycolide) (PLGA) (lactide:glycolide 2A [50:50], MW 20,000 units); PLGA1A: poly(D,L-lactide-co-glycolide) (PLGA) (lactide:glycolide 1A (50:50), MW 6500 units); solid phase: 10 mg protein-loaded dextran nanoparticles (dextran/BSA = 1.00); oil phase: PLG (50/50 3A)/LPLA (1000 mg 12.50% w/w, DCM); hydrophilic oil: EG/G = 4.00 (5.50 mL containing 0.50 mL 4% PVA and NaCl); water phase: 5% NaCl solution 1000 mL.

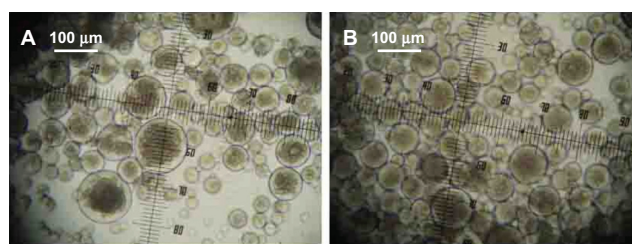
**Abbreviations:** BSA, bovine serum albumin; DCM, dichloromethane; EG, ethylene glycol; G, glycerol; PEG, polyethylene glycol; PLGA, poly(D,L-lactide-co-glycolide); PVA, polyvinyl alcohols.



**Figure S4** Light microscope images of microspheres formed using different concentrations of PLGA and PLA. Concentration of PLG (50/50 3A)/LPLA: (A) 15% w/w; (B) 12.5% w/w; (C) 10% w/w; (D) 7.5% w/w.

**Notes:** LPLA: poly(D,L-lactide) (Low IV) (MW 40,000–75,000 units); PLGA3A: poly(D,L-lactide-co-glycolide) (PLGA) (lactide:glycolide 3A, [50:50], MW 40,000–75,000 units); solid phase: 10 mg protein-loaded dextran nanoparticles (dextran/BSA = 1.00); oil phase: PLG (50/50 3A)/LPLA = 40/60; hydrophilic oil: EG/G = 4.00 (5.50 mL containing 0.50 mL 4% PVA and NaCl); water phase: 5% NaCl solution.

**Abbreviations:** BSA, bovine serum albumin; DCM, dichloromethane; EG, ethylene glycol; G, glycerol; PEG, polyethylene glycol; PLGA, poly(D,L-lactide-co-glycolide); PVA, polyvinyl alcohols.



**Figure S5** Light microscope images of microspheres with different loadings. (A) Solid phase: 10 mg protein-loaded dextran nanoparticles; (B) 20 mg protein-loaded dextran nanoparticles.

**Notes:** HPLA: poly(D,L-lactide) (High IV) (MW 40,000–75,000 units); PLGA3A: poly(D,L-lactide-co-glycolide) (PLGA) (lactide:glycolide 3A, [50:50], MW 40,000–75,000 units); solid phase: protein-loaded dextran nanoparticles (dextran/BSA = 1); oil phase: PLGA (50/50 3A)/HPLA = 40:60 (1000 mg 12.5% w/w, DCM); hydrophilic oil: EG/G = 4 (5.5 mL containing 0.5 mL 4% PVA and NaCl); water phase: 5% NaCl solution 1000 mL.

**Abbreviations:** BSA, bovine serum albumin; DCM, dichloromethane; EG, ethylene glycol; G, glycerol; PEG, polyethylene glycol; PVA, polyvinyl alcohols.

RETRACTED

### International Journal of Nanomedicine

### Publish your work in this journal

The International Journal of Nanomedicine is an international, peer-reviewed journal focusing on the application of nanotechnology in diagnostics, therapeutics, and drug delivery systems throughout the biomedical field. This journal is indexed on PubMed Central, MedLine, CAS, SciSearch®, Current Contents®/Clinical Medicine,

Submit your manuscript here: <http://www.dovepress.com/international-journal-of-nanomedicine-journal>

Dovepress

Journal Citation Reports/Science Edition, EMBASE, Scopus and the Elsevier Bibliographic databases. The manuscript management system is completely online and includes a very quick and fair peer-review system, which is all easy to use. Visit <http://www.dovepress.com/testimonials.php> to read real quotes from published authors.