

Knowledge Mapping Analysis of Research on Pregnancy-Related Pelvic Girdle Pain (PPGP) from 2002 to 2022 Using Bibliometrics [Corrigendum]

Xu L, Li Y, He Y, et al. *J Pain Res.* 2024;17:643–666.

The authors have advised [Figure 1](#) on page 645 is incorrect. Due to an error at the time of resubmission [Figure 1](#) and [Figure 2](#) were inadvertently duplicated. The correct [Figure 1](#) is shown below.

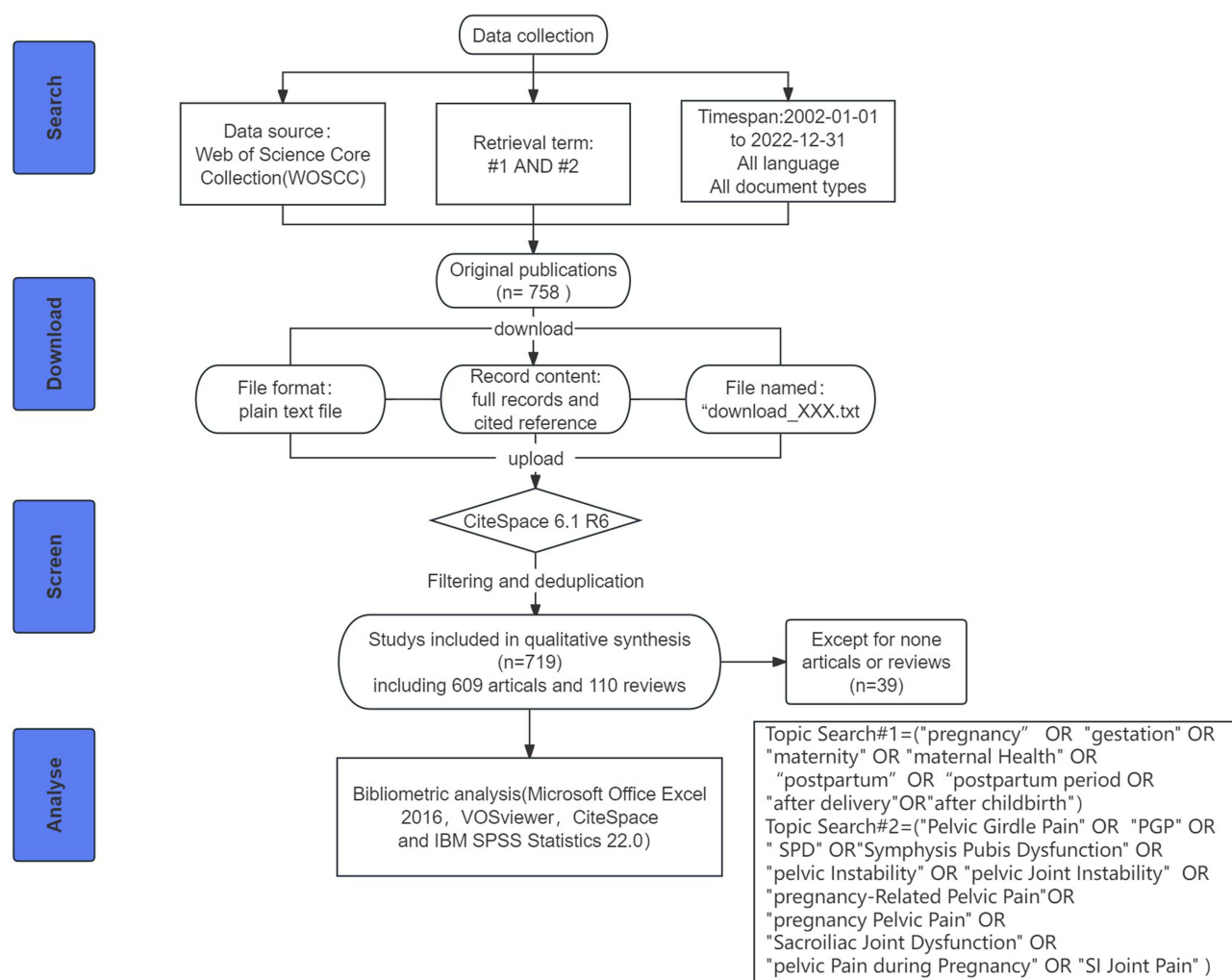


Figure 1 The flow chart of the screening process.

The authors apologize for the error.

Journal of Pain Research

Dovepress

Publish your work in this journal

The Journal of Pain Research is an international, peer reviewed, open access, online journal that welcomes laboratory and clinical findings in the fields of pain research and the prevention and management of pain. Original research, reviews, symposium reports, hypothesis formation and commentaries are all considered for publication. The manuscript management system is completely online and includes a very quick and fair peer-review system, which is all easy to use. Visit <http://www.dovepress.com/testimonials.php> to read real quotes from published authors.

Submit your manuscript here: <https://www.dovepress.com/journal-of-pain-research-journal>

<https://doi.org/10.2147/JPR.S466139>