

Investigation of Wound Healing and Anti-Inflammatory Activities of Solvent Fractions of 80% Methanol Leaf Extract of *Achyranthes aspera* L. (Amaranthaceae) in Rats

Teklie Mengie ¹
Solomon Mequanente ²
Dereje Nigussie ³
Belete Legesse ⁴
Eyasu Makonnen^{2,4}

¹Department of Pharmacy, College of Health Science, Debre Tabor University, Debre Tabor, Ethiopia; ²Department of Pharmacology & Clinical Pharmacy, School of Pharmacy, College of Health Science, Addis Ababa University, Addis Ababa, Ethiopia; ³Vaccines and Diagnostic Research Directorate, Ethiopian Public Health Institute, Addis Ababa, Ethiopia; ⁴Center for Innovative Drug Development & Therapeutics Trial in Africa (CDT-Africa), College of Health Science, Addis Ababa University, Addis Ababa, Ethiopia

Introduction: The various fractions of leaves of *Achyranthes aspera* L. (*A. aspera*) have not yet been explored scientifically for in-vivo wound healing and anti-inflammatory activities. The objective of this study was, therefore, to evaluate in-vivo wound healing and anti-inflammatory activities of solvent fractions of 80% methanol leaf extract of *A. aspera* in rats.

Methods: The 80% methanol leaf extract of *A. aspera* was fractionated with chloroform, n-butanol and water. Wound healing and anti-inflammatory activities were evaluated using excision and incision wound models, rat paw edema and cotton pellet-induced granuloma models, respectively. For wound healing activity, fractions were evaluated at 5 and 10% ointments. The positive control groups were treated with nitrofurazone 0.2% ointment. Simple ointment treated for excision wound model and untreated for incision wound model rats were assigned as negative controls. For anti-inflammatory activity, fractions were evaluated at 100, 200 and 400mg/kg. Positive control groups were treated with indomethacin 10mg/kg for both rat paw edema and cotton pellet-induced granuloma models. The 2% Tween 80 treated rats were assigned as negative controls for both anti-inflammatory activity models. All groups comprised of 6 rats and treatment administrations were made topically and orally for evaluation of wound healing and anti-inflammatory activities.

Results: The 10% w/w chloroform fraction ointment revealed a high percentage of wound contraction and reduced period of epithelialization ($p < 0.01$). Chloroform fraction was also found to be the most active fraction, which demonstrated the maximum percentage inhibition of edema (52.50%; $p < 0.01$) and transudative and proliferative component of chronic inflammation (37.52 and 52.81%; $p < 0.01$), which was comparable to indomethacin.

Conclusion: Data obtained from this study collectively indicated that a chloroform fraction of 80% methanol leaf extract of *A. aspera* possessed significant wound healing and anti-inflammatory activities.

Keywords: *Achyranthes aspera*, wound healing, carrageenan-induced paw edema, cotton pellet granuloma

Introduction

Wound is a rupture in the epithelial integrity of the skin which arises due to physical or chemical injuries or microbial infections.¹ On the basis of physiology of wound healing, wounds can be classified as acute or chronic. Acute wounds are tissue injuries that heal through an orderly sequence of physiological events which results in sustained restoration of anatomic and functional integrity, generally in less than 8 weeks. In this kind of

Correspondence: Teklie Mengie
Department of Pharmacy, College of Health Science, Debre Tabor University, P.O. Box: 272, Debre Tabor, 6300, Ethiopia
Tel +251 910111531
Email mikrmengie21@gmail.com

wound, *Staphylococcus aureus* is the most important pathogen.² On the other hand, chronic wounds are wounds that have failed to proceed through an orderly and timely process to produce anatomic and functional integrity even after 3 months.^{3,4}

Herbal preparations and their products are considered essential and major source of modern medicine, globally.⁵ Many plants have been proven to possess significant healing properties.⁶ In Ethiopia, herbal medicines are used to treat skin disorders, including wounds, and they are very common in the country.⁷

Achyranthes aspera L. (Figure 1), which belongs to the family *Amaranthaceae*, is found throughout tropical Asia, Africa, Australia and America and grows as a wasteland herb everywhere. It is used as folk medicine. Different researchers have investigated *A. aspera* both in-vitro and in-vivo for different biological activities; for instance, it is used in the indigenous system of medicine for its emenagogue, antiarthritic, antifertility, laxative, ecboic, abortifacient, antihelminthic, aphrodisiac, antiviral, antihypertensive, anticoagulant, diuretic, immunostimulant, antihyperlipidemic, antioxidant, and anti-tumor properties.⁸ Additionally, the crude and solvent fractions of *A. aspera* were investigated for their antimicrobial activity using



Figure 1 *Achyranthes aspera* from site of collection (Captured on 20/04/2019).

a variety of solvent systems for both clinically isolated and laboratory screened microorganisms.^{9–13}

In spite of many claims and in-vitro studies with supportive results in wound healing and anti-inflammatory activity, no study has been conducted on the wound healing and anti-inflammatory activities of solvent fractions of *A. aspera* leaves in animal models. The present study was, therefore, performed to investigate the wound healing and anti-inflammatory activities of the fractions.

Materials and Methods

Chemicals, Drugs, and Reagents

Chemicals, drugs, and reagents used in the study include: distilled water, chloroform, ethyl acetate and mercuric chloride (Bulex Laboratory, India), nitrofurazone ointment 0.2%, Ketamine (NEON Laboratories, India), sulphuric acid, n-butanol, methanol, hexane (LobaChemie, India), wool fat, hard paraffin, white soft paraffin, cetostearyl alcohol, indomethacin (Cadila, Ethiopia), Tween 80 (Uni-Chem, India), diethyl ether (BDH Laboratory Supplies, England) and carrageenan (Sigma Aldrich, Germany), acetic anhydride (Lot A13/45/67/A), ammonia and ferric chloride anhydrous (Sisco Research Laboratories, India), potassium iodide (Calibre Engineering, India), normal saline (Addis Pharmaceutical Factory, Ethiopia). Chemicals and reagents to be used were analytically graded.

Experimental Animals

Healthy, adult Wistar albino rats of both sexes (6–8 weeks of age), weighing 200–250 g obtained from the animal house of the Ethiopian Public Health Institute, Addis Ababa were used. They were kept in clean polypropylene cages with laced steel roofs under standard conditions (25 ± 2 °C, $55 \pm 5\%$ relative humidity, and 12 hr light and dark cycles), with free access to standard laboratory pellet and clean drinking water *ad libitum*. Rats were acclimatized to laboratory conditions for one week prior to the commencement of the experiments. All procedures and techniques used in this experiment were carried out in accordance with the National Institute of Health Guidelines for the Care and Use of Laboratory Animals.¹⁴

Plant Material

Fresh leaves of *Achyranthes aspera*, commonly called “Telenje” in Amharic and “Maxxannee” in Afaan Oromo, were collected from their natural habitat around Debre Tabor, South Gondar, North West Ethiopia. The plant was identified and authenticated by herbal

taxonomist Dr. Getachew Addis and a voucher specimen GDBT/002/19 was deposited at the Ethiopian Public Health Institute Herbarium.

Air-dried and powdered leaves of *A. aspera* were first defatted by macerating in n-hexane for 72 hrs at room temperature, with occasional shaking followed by filtration. The remnants of the solvent were removed from the residue through exposure to open air. The cold maceration extraction technique was used to extract the plant material. The 1.07 kg of powder was macerated in a flask containing 80% methanol (1:6 w/v) for 72 hrs. Then, the extract was filtered using Whatman filter paper (No. 1) and the marc was re-macerated for a second and third time by adding fresh solvent. The filtrates from the three batches of the 80% methanol were combined and concentrated in a rotary evaporator at a temperature of 40°C. The remaining solvent was removed using a lyophilizer. After solvent removal, a black sticky residue weighing 123.51 gm was obtained, giving a percentage yield of 11.54%. The 80% methanol extract was subjected to successive fractionation using methods previously mentioned,¹⁵ with solvents of different polarities (chloroform, n-butanol, and water).¹⁶ Next, 123 grams of the crude extract was suspended in a separatory funnel in 180 mL of distilled water. The same volume of chloroform was added and mixed well. The mixture was then allowed to form a distinct layer and the chloroform fraction was separated by eluting the lower layer. This was repeated three times. Then the aqueous residue was similarly mixed with an equal volume of n-butanol and separated. The chloroform and n-butanol fractions were concentrated by a rotary evaporator and dried in a dry oven at 40°C. The aqueous fraction was lyophilized. The percentage yields of the dried fractions were 48.3 g (39.11%), 35.21 g (28.5%) and 38.43 g (31.1%) of aqueous, n-butanol and chloroform, respectively. Then, the fractions were stored in tight containers at -4°C until the initiation of the actual experiment.¹⁷ All fractions were reconstituted in 2% Tween 80 at an appropriate concentration for the various experiments to be conducted.

Simple ointments and medicated ointments of aqueous, n-butanol and chloroform fractions were prepared as described in the *British Pharmacopoeia*. So, 2009. 2.5 g hard paraffin and 2.5 g Cetostearyl alcohol were melted in a beaker to prepare 50 g of simple ointment; 2.5 g wool fat and 42.5 g white soft paraffin were melted in another beaker (Table 1). The contents of the two beakers were then mixed and stirred until cooled. The 5% w/w and 10% w/w ointments of each fraction were prepared by incorporating 2.5 g and 5 g of the aqueous, n-butanol and chloroform fraction each into a 47.5 g and 45

Table 1 Master and Reduced Formula Used to Formulate Simple Ointment

Ingredients	Master Formula	Reduced Formula
Wool fat	50 g	2.5 g
Hared paraffin	50 g	2.5 g
Cetostearyl alcohol	50 g	2.5 g
White soft paraffin	850 g 1000 g	42.5 g 50 g

g simple ointment base, respectively, to get a 50 g medicated ointment of each fraction.

Acute Oral and Dermal Toxicity Tests

An acute oral toxicity test for solvent fractions of the leaves of *A. aspera* was performed as described in the Organization for Economic Cooperation and Development guideline (OECD) 425; "Limit Test at 2000 mg/kg".¹⁸ Four Wistar albino female rats, aged 6–8 weeks, were selected randomly and used for the test. The rats were fasted overnight before administering the fractions and 1–2 hrs after administering the fractions. First, a sighting study was performed to determine the starting dose, in which a single female rat for each fraction was given 2000 mg/kg of the respective fraction as a single dose using oral gavage. Since no death was observed within 24 hrs, an additional four rats were used for each of the fractions, and administered the same dose of fractions. The rats were observed continuously for 4 hrs at 30-min intervals and then for 14 consecutive days at an interval of 24 hrs for the general signs and symptoms of toxicities such as changes in skin and fur, eyes and mucous membranes, somatomotor activity, and behavioral pattern, salivation and diarrhea, weight loss, tremor and convulsions, lethargy and paralysis, food and water intake and mortality. Acute dermal toxicity was also carried out as per OECD guidelines.¹⁹ Three female rats with normal skin texture for each fraction were randomly selected and housed individually in a cage and acclimatized to the laboratory condition for a week prior to the test. Then, the rats were anesthetized using ketamine 50mg/kg intra-peritoneal (i.p) injection and about 10% of the body surface area fur was shaved from the dorsal area of the trunk 24 hrs before the study. A limit test dose of 2000mg/kg of the 10% w/w of the solvent fraction formulations was applied uniformly over the shaved area for 24 hrs. During the exposure period, rats were caged individually. At the end of the exposure period, residual test substance was removed and the rats were observed daily for the

development of any adverse skin reactions for 14 days. Erythema and edema were evaluated and graded according to the OECD404 grade (2002).

Grouping and Dosing of Animals

For the excision wound model, the animals were randomly divided into eight groups of six rats per group as follows: the first group was treated with simple ointment. The second group was treated with nitrofurazone 0.2% ointment. The third and fourth groups were treated with 5 and 10% ointments of aqueous fraction, respectively. The fifth and sixth groups were treated with 5 and 10% ointments of n-butanol fraction, respectively, while the seventh and eighth groups were treated with 5 and 10% ointments of chloroform fractions of leaves of *A. aspera*, respectively. For the incision wound model, the animals were randomly assigned into nine groups of 6 rats per group, with the same grouping and dosing as that of the excision wound model, with the exception of the untreated group. For anti-inflammatory activity evaluation in two models, the rats were randomly assigned into eleven groups of six rats in each group. The first two groups served as negative (2% Tween 80 at a dose of 10 mL/kg) and positive (indomethacin 10mg/kg) controls for both models. The first three test groups (3–5) received three different doses (100, 200, and 400mg/kg) of the aqueous fraction. The other three test groups (6–8) received n-butanol fraction at doses of 100, 200, and 400mg/kg, while the remaining three test groups (9–11) received the chloroform fraction at the same three dose levels. The fractions and indomethacin powder were dissolved in 2% Tween 80 to prepare suspension. The doses (100, 200 and 400mg/kg) were selected based on results of the oral limit test.

Wound Healing Models

Excision Wound Model

Rats were anesthetized with i.p 50mg/kg ketamine.²⁰ The fur was removed from the dorso-thoracic area. A circular mark of 314 mm², as described by Nagar,²¹ was prepared using a permanent marker and a full-thickness was excised using sharp sterilized scissors, and considered as day 0. Starting from day one, i.e after 24 hrs of creating a wound area, the rats were treated and ointments were applied as described above. All ointments were applied once daily to the wound area until the wound was completely healed. The rats were observed for wound closure, and measurements were taken every two days post-wounding using transparent paper and a permanent marker. Then, the traced area for each rat was calculated by measuring the diameter using a millimeter scaled ruler. The percentage of

wound contraction was evaluated as described in the previous study:²²

$$\% \text{ Wound contraction} = \frac{\text{wound area on day zero} - \text{wound area on day n}}{\text{wound area on day zero}} \times 100$$

where n = number of days, ie 2nd, 4th, 6th, 8th, 10th, 12th, 14th, 16th, 18th and 20th (the day the wound in the fraction-treated groups, including the standard, completely healed).

The number of days required for the dead tissue remnants to fall off the wound surface exclusive of leaving a raw wound behind was taken as the endpoint of complete epithelialization and the days required for this were considered to be a period of epithelialization.^{23,24}

Incision Wound Model

Rats were anesthetized and their fur was removed as described for the excision wound model. A 3-cm long, linear-paravertebral incision was made through the full thickness of the skin on either side of the vertebral column 1 cm from the midline. The removed skin was kept together and stitched using chromic catgut (2/0 metric-1/2 circle) with a curved needle at 1-cm intervals,²⁰ which was taken as day 0. Starting from day one, the ointments were applied as described in Grouping and Dosing of Animals. The ointments were applied topically once per day for 9 days. The sutures were removed on the eighth day post-wounding.²⁵ Then the tensile strength was measured²⁶ on the tenth day to determine the extent of healing using the continuous constant water flow technique:^{25,27}

Percentage tensile strength of fractions

$$= \frac{\text{Tensile Strength (fractions)} - \text{Tensile Strength (SO)}}{\text{Tensile Strength (SO)}} \times 100$$

Percentage tensile strength of reference

$$= \frac{\text{Tensile Strength (reference)} - \text{Tensile Strength (SO)}}{\text{Tensile Strength (SO)}} \times 100$$

Percentage tensile strength of simple ointment

$$= \frac{\text{Tensile strength (SO)} - \text{Tensile Strength (LU)}}{\text{Tensile Strength (LU)}} \times 100$$

where SO = simple ointment and LU = left untreated.²⁸

Determination of Anti-Inflammatory Activity

Carrageenan-Induced Paw Edema

The method described by Ayal²⁹ was followed with minor modification to study the effect of solvent fractions of 80% methanol leaf extract of *A. aspera* on acute inflammation. Rats fasted overnight with free access to water until the experiment commenced. The basal volume, ie displacement of water by the left hind paw of each rat, was determined using a calibrated plethysmometer and randomly assigned to their respective groups before administration of the substance as described in Grouping and Dosing of Animals. Then, the rats were treated with test substances by making use of oral gavage. After 1 hr of test administration, inflammation was induced in the left hind paw by injecting 0.05 mL of freshly prepared 1% carrageenan suspension in normal saline into the sub-plantar surface of the left hind paw. The change in volume of the injected paw was measured after 1, 2, 3 and 4 hrs post-induction with carrageenan using a plethysmometer.²⁸

$$\text{Percentage inhibition of edema} = \frac{\text{PEC} - \text{PET}}{\text{PEC}} \times 100$$

PEC = paw edema of negative control and PET = paw edema of test groups, including the standard.

Cotton Pellet-Induced Granuloma

The method previously used by Afsar et al³⁰ was used to evaluate the transudative and proliferative components of chronic inflammation. Male albino Wistar rats (200–250 g) were fasted overnight with free access to water until the commencement of the experiment. The control, standard and test groups of rats received 2% Tween 80, indomethacin and fractions, respectively, as mentioned in Grouping and Dosing of Animals.

Cotton pellets weighing 10±1 mg were sterilized in an autoclave for 30 min at 120 °C under 15Ib pressure. Twenty minutes after treatment with the standard drug and fractions, the rats were anesthetized with ketamine hydrochloride (50 mg/kg, i.p) and the subcutaneous tunnel was made aseptically using blunted forceps in both sides of the previously shaved groin region of each rat. Two sterilized cotton pellets weighing 10±1 mg each were then implanted bilaterally in the subcutaneous tunnel and stitched with chromic catgut (2/0 metric-1/2 circle). Treatment with 2% Tween 80, indomethacin and fractions continued for a total of seven consecutive days (p.o., once a day). On day 8, the rats were sacrificed with ether

anesthesia and the pellets surrounded by granuloma tissue were dissected out carefully and freed from extraneous tissue. The wet weight of the cotton was taken immediately after removal and then dried up to a constant weight at 60 °C for 24 hrs and the net dry weight, that is, after subtracting the weight of the cotton pellets, was determined.

The measure of exudate formation = Immediate wet weight of pellet – Constant dry weight of the pellet

The measure of granuloma tissue formation = Constant dry weight – Initial weight of the cotton pellet

The exudate amount (mg), granulation tissue formation (mg), the percentage inhibition of exudate and granuloma tissue formation were calculated according to the formula described below.³¹

$$\text{Exudate inhibition}(\%) = \left(1 - \frac{\text{exudate in treated group}}{\text{exudate in controls}} \times 100 \right)$$

Phytochemical Screening of Solvent Fractions

Preliminary phytochemical screening of secondary metabolites of aqueous, n-butanol and chloroform fractions of 80% methanol leaf extract of *A. aspera* were carried out using standard tests.^{32,33}

Test for Saponins

To 0.25 g of each fraction (AF, BF and CF) was added 5 mL of distilled water. Then, the solution was shaken vigorously and observed for a stable persistent froth. Formation of a stable froth that persisted for about half an hour indicated the presence of saponins.

Test for Terpenoids

To 0.25 g of each fraction was added 2 mL of chloroform. Then, 3mL of concentrated sulfuric acid was carefully added to form a layer. A reddish-brown coloration of the interface indicated the presence of terpenoids.

Test for Tannins

About 0.25 g of each fraction was boiled in 10 mL of water in a test tube and then filtered with filter paper (Whatman No. 1). A few drops of 0.1% ferric chloride were added to the filtrate. A brownish-green or a blue-black precipitate indicated the presence of tannins.

Test for Flavonoids

About 10 mL of ethyl acetate was added to 0.2 g of each fraction, and heated on a water bath for 3 min. The

mixture was cooled and filtered. Then, about 4 mL of the filtrate was taken and shaken with 1 mL of dilute ammonia solution. The layers were allowed to separate and the yellow color in the ammonia layer indicated the presence of flavonoids.

Test for Cardiac Glycosides

To 0.25 g of each fraction diluted with 5 mL of water was added 2 mL of glacial acetic acid containing one drop of ferric chloride solution. This was underlaid with 1 mL of concentrated sulfuric acid. A brown ring at the interface indicated the presence of a deoxysugar characteristic of cardenolides.

Test for Steroids

Two mL of acetic anhydride was added to 0.25 g of each fraction with 2 mL sulfuric acid. The color change from violet to blue or green in some samples indicated the presence of steroids.

Test for Alkaloids

A few drops of freshly prepared Mayer's reagent were added to 0.5 g of each fraction. The formation of cream was taken as positive for the presence of alkaloids.

Data Analysis

Data were analyzed using SPSS version 20.0 for Windows. Experimental results were expressed as mean \pm standard error of the mean (SEM) and statistical significance tests were carried out by using one-way analysis of variance (ANOVA) followed by the Tukey post hoc test for multiple comparisons to compare results among groups; p-values of <0.05 were considered statistically significant. The analyzed data were then presented using tables and figures.

Results

Acute Oral and Dermal Toxicity Test

The results of acute oral and dermal toxicity tests of fractions (AF, BF and CF) of 80% methanol leaf extract of *A. aspera* indicates that the solvent fractions did not show gross behavioral changes, dermal toxic effects or mortality within 24 hrs or over the next 14 days. According to the "Limit Test" of OECD guideline 425,¹⁸ the oral LD₅₀ of solvent fractions was greater than 2000 mg/kg in rats.

Evaluation of Wound Healing Activity

Rats treated with chloroform and n-butanol fraction ointments revealed wound healing in the excision wound model. The percentage of wound contraction of the rats treated with the 10% w/w ointment of chloroform fraction was significant ($p < 0.01$) in most post-wounding days compared with the negative control (Table 2 and Figure 2) and reduced period of epithelialization (Table 3). The wound contraction of the group treated with 10% w/w chloroform fraction ointment was comparable with that of the positive control (NF 0.2%) in most post-wounding days. These were, 44.96 and 47.59% on day 8; 97.85 and 98.17% on day 16; 99.37 and 99.56% on day 18; 99.92 and 99.95% on day 20, for 10% w/w CF and NF 0.2% ointments, respectively. On the other hand, rats treated with 5% w/w and 10% w/w ointments of aqueous and n-butanol fractions showed statistically insignificant wound healing activity compared with the negative control until the fourth day. In addition, all 5% w/w fraction ointments showed statistically insignificant wound contraction until the sixth day. There was a significant difference in the wound contractions between the rats treated with the three fraction ointments. However, 5% w/w CF ointment caused significant wound healing on the eighth day and revealed significant difference in wound contractions compared with 5% w/w AF and simple ointments ($p < 0.01$) on days 16, 18 and 20. The wound contraction of the group treated with 10% w/w CF ointment revealed significant wound healing activity compared with 5% w/w and 10% w/w AF and BF on the fourteenth day. Thus, CF is the most active fraction as evidenced by a higher percentage of wound contraction and a reduced period of epithelialization (Figure 2, Tables 2 and 4).

In the incision wound model, groups treated with 5% w/w and 10% w/w ointments of the three fractions showed a significant ($p < 0.01$) increase in tensile strength compared with the control groups (simple ointment treated and untreated). Tensile strength was significantly increased by NF 0.2% and 10% w/w CF ointments compared with the 5% w/w AF, BF and CF ointments ($p < 0.01$). The tensile strength recorded in the group treated with 10% n-butanol fraction was statistically significant compared with the group treated with 5% aqueous fraction (Table 4) ($p < 0.01$).

Anti-Inflammatory Activity

Sub-plantar injection of 0.05 mL of 1% carrageenan to the rat's left hind paw produced a progressive increment of

Table 2 Effect of Solvent Fractions of 80% Methanol Leaf Extract of *A. aspera* on Percentage Wound Contraction in Rats

Days of Wound Area Measurement in mm ² (Mean±SEM) and %			Contraction		
Treatment group	Day 2	Day 4	Day 6	Day 8	Day 10
SO	307.97±2.5[1.92]	297.85±2.91[5.14]	282.13±1.14[11.30]	247.82±2.56[21.08]	221.44±3.59[29.48]
NF 0.2%	297.85±2.91[4.3]	284.10±1.33[9.24]*a	240.60±7.52[31.15]*a	164.37±6.55[47.59] *aef	131.39±6.63[58.16]*a
5% w/w AF	303.93±1.79[3.2]	290.82±1.11[7.38]	247.82±2.56[26.77]	229.03±7.23[27.06]	131.75±15.89[58.04]*a
10% w/w AF	305.48±1.56[2.71]	286.05±1.34[8.9]	227.20±7.71[39.01]*a	186.14±10.55[40.72]*af	102.88±10.36[67.24]*a
5% w/w BF	308.22±2.1[1.83]	289.49±1.88[7.81]	252.85±7.70[24.74]	229.66±7.72[26.86]	157.84±6.81[49.73]*a
10% w/w BF	302.52±1.5[3.66]	284.130±1.27[9.51]	198.53±11.91[36.77]*a	170.09±5.36[45.83]*af	113.49±5.10[63.85]*ad
5% w/w CF	303.48±1.72[3.35]	290.67±2.83[7.43]	264.00±3.45[19.04]	201.29±7.26[35.89]*a	149.73±3.62[52.32]*a
10% w/w CF	298.06±0.89[5.08]	284.5±0.76	199.49±10.07[39.30]*abcd	172.82±8.51[44.96]*adf	127.80±4.29[59.30]*a
Day 12	Day 14	Day 16	Day 18	Day 20	
183.5±2.78[41.56]	95.50±6.31[69.59]	59.80±3.05[80.95]	38.99±4.02[87.58]	35.33±3.61[88.75]	
75.88±6.59[75.83]*a	30.24±2.10[90.37]*ae	5.76±0.83[98.17]*aef	1.39±0.41[99.56]*adef	0.15±0.13[99.95] *af	
107.64±13.01[65.72]*a	54.95±9.84[82.62]*a	30.23±4.21 [90.37]*a	26.36±3.52 [91.60]	15.99±2.15[94.0]*a	
83.81±8.17[73.31]*a	53.56±0.75[82.81]*a	10.50±1.18[96.66]*af	7.44±0.59[97.63]*af	5.33±0.77[98.30]*af	
114.21±8.4[63.63]*a	62.70±1.27[80.03]*a	21.23±4.29[92.51]*a	14.79±3.74[95.29]*a	8.87±2.14[97.18]*a	
73.58±7.04[76.57]*ad	41.07±2.81[86.92]*a	20.61±2.44[93.44]*a	15.19±1.65[95.31]*a	8.94±0.98[97.19]*a	
102.85±2.5[76.25]*a	43.00±2.94[86.31]*a	9.16±1.64[97.08]*af	5.69±0.67[98.19]*af	0.58±0.0999.82]*af	
67.52±4.75[78.50]*af	23.38±4.2[92.55]*adefg	6.74±1.31[97.85]*af	1.97±0.53[99.37]*aef	0.27±0.17[99.92]*af	

Notes: Values are expressed as mean ± SEM (n = 6 rats in each group) and analyzed by one-way ANOVA followed by post hoc Tukey test; ^acompared with simple ointment; ^bcompared with NF 0.2%; ^ccompared with 5% chloroform fraction; ^dcompared with 5% n-butanol fraction; ^ecompared with 10% n-butanol fraction; ^fcompared with 5% aqueous fraction; ^gcompared with 10% aqueous fraction; w/w = weight by weight; SO = Simple ointment; * = p <0.01; NF 0.2% = nitrofurazone 0.2% ointment; AF, BF and CF are aqueous, n-butanol and chloroform fractions of 80% methanol leaf extract of *A. aspera* (*Amaranthaceae*), respectively. Initial wound area was 314 mm². Values in the bracket are percentages of contractions.

paw thickness that reached its maximum value after 2 hr post-induction with 2% Tween 80 (negative control) (Table 5). All tested doses of the chloroform fraction showed a significant inhibition of paw edema starting from 1 hr and the effect lasted until 4 hrs post-induction compared with 2% Tween 80 (p <0.01). Maximum anti-inflammatory effect (% inhibition) in 100, 200 and 400 mg/kg doses of CF was observed at 4 hr post-induction with respective values of 31.85%, 51.25% and 52.5% in a dose dependent manner (R²= 0.891). Comparisons among doses of the CF with other fractions also showed significant differences. For instance, both the middle and the highest doses of CF showed a significantly different effect compared to 100 mg AF (p <0.01) at 1, 2, 3 and 4 hrs. The 200 mg/kg and 400 mg/kg doses of AF showed statistically significant inhibition of paw edema at 2 hr and 1 hr post-induction compared with 2% Tween 80, respectively (p <0.01). The effect ifrom both dose levels then persisted significantly at 3 and 4 hrs post-induction compared with the 2% Tween 80 and 100 mg/kg AF (p <0.01). However, 100 mg/kg AF did not show significant inhibition of paw edema compared with the 2% Tween 80 throughout the observation period except for 4 hrs post-induction. Maximum percentage inhibition by all tested

doses of AF was observed at 4 hrs post-induction with respective values of 22.50%, 45.00%, and 45.83%, dose-dependently (R²= 0.881). Comparison among doses of the BF also showed a significant anti-inflammatory effect. Hence, both middle and highest doses of BF showed statistically different effects compared to 100 mg/kg AF at 3 hrs and 1 hr post-induction (p <0.01), respectively, and the effects persisted up to 4 hrs post-induction.

Significant inhibition of paw edema occurred with 10 mg/kg indomethacin from the first^t hr until the fourth hr after carrageenan injection compared with 2% Tween 80 (p <0.01). Moreover, no difference in onset and duration of action was observed for all tested doses of CF and 200, 400 mg/kg BF, as all showed significant inhibition of paw edema from the first hr to the fourth hr post-induction (p <0.01). Nevertheless, throughout the observation both 200 and 400 mg/kg of CF had shown a comparable anti-inflammatory effect with 10 mg/kg of indomethacin. CF was the most active fraction, which is evidenced by the higher percentage of edema inhibition (%) values of all tested doses of CF throughout the observation period compared to the equivalent doses of the BF and AF (Table 5). Maximum percentage inhibition in all tested doses of BF was also observed at 4 hrs post-induction

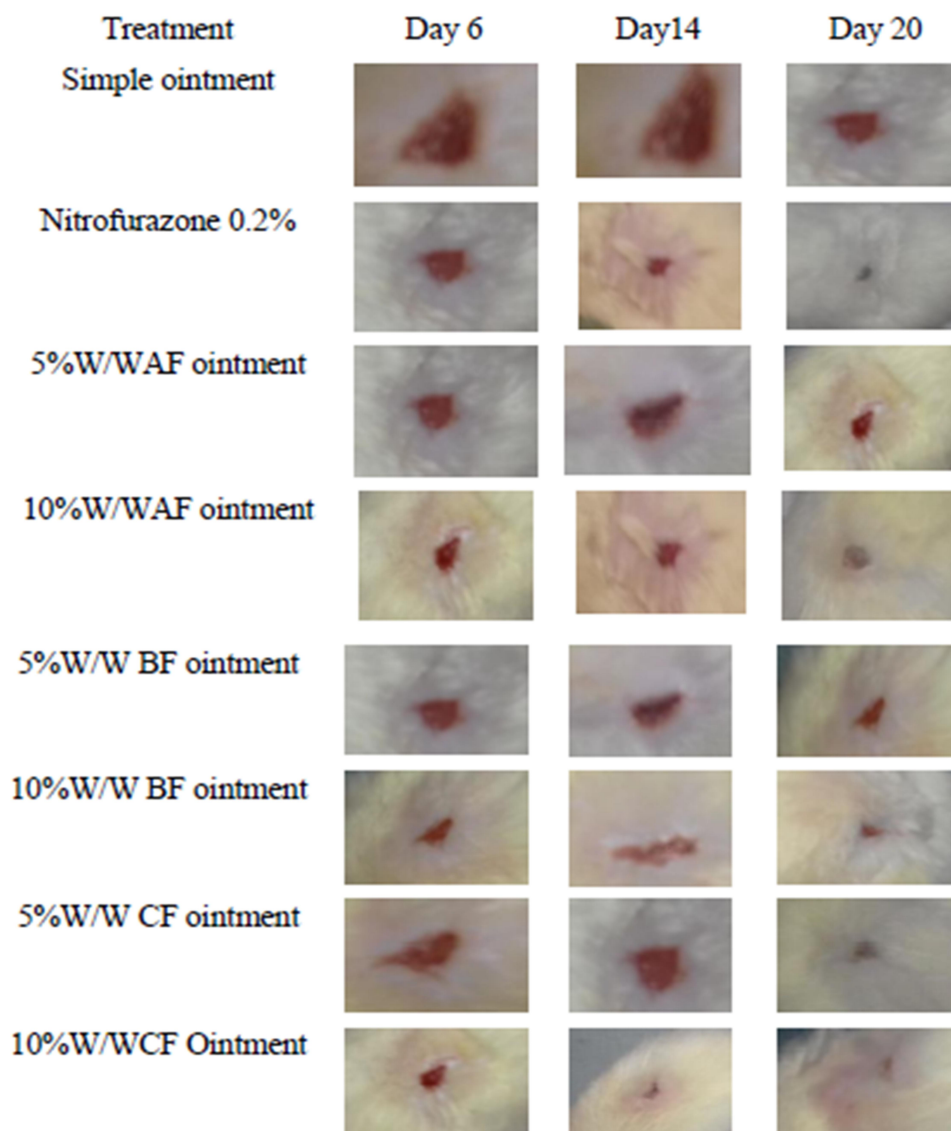


Figure 2 Excision wound on rats treated with solvent fraction ointments of leaves of *A. aspera* in rats.

with respective values of 39.16%, 42.50%, and 45.0% in a dose-dependent manner ($R^2 = 0.997$).

Chloroform fraction (CF) and n- butanol fraction (BF), at all tested doses, significantly inhibited the formation of inflammatory exudate and granuloma mass ($p < 0.01$) compared with 2% Tween 80. Comparisons among doses of the CF with other groups revealed significantly different effects at 400 mg versus 100 and 200 mg/kg AF and BF ($p < 0.01$) in both exudate and granuloma inhibition. Chloroform fraction also revealed statistically significant anti-inflammatory activity even at the lowest and middle doses compared with 100 and 200 mg/kg AF ($p < 0.01$) in both exudate and granuloma inhibition). Furthermore, the anti-inflammatory effect of the CF was found to increase

in a dose-dependent manner ($R^2 = 1$ for exudate inhibition; $R^2 = 0.994$ for granuloma inhibition). Maximum percentage inhibition of exudate and granuloma formation was indicated by 400 mg/kg of CF (37.50 and 52.81%), respectively, compared with all other doses of the CF, BF and AF.

The n-butanol fraction showed comparable effects at all tested doses in inhibiting cotton pellet-induced exudate and granuloma tissue formation. Intergroup comparisons among doses of the BF revealed a statistically significant different inhibition against exudate and granuloma formation in 400 mg versus 100 mg/kg AF, BF and CF ($p < 0.01$). In addition, the anti-inflammatory effect of the BF was ascertained to increase in a dose-dependent

Table 3 Effect of Topical Application of Solvent Fractions of 80% Methanol Leaf Extract of *A. aspera* on Period of Epithelialization (No. of Days) Post Wound Creation in Rats

Treatment Group	Period of Epithelialization in Days (Mean ± SEM)
SO	19.33±0.21
NF 0.2%	14.17±0.31*abc
5% w/w AF	16.67±0.21*a
10% w/w AF	15.50±0.22*a
5% w/w BF	16.17±0.21*a
10% w/w BF	14.83±0.21*a
5% w/w CF	15.33±0.33*a
10% w/w CF	14.00±0.26*abcd

Notes: Values are expressed as mean ± SEM (n = 6 rats in each group) and analyzed by one-way ANOVA followed by post hoc Tuckey test; *compared with simple ointment, ^bcompared with 5% n-butanol fraction, ^ccompared with 5% aqueous fraction, ^dcompared with 10% aqueous fraction; w/w = weight by weight; SO = Simple; * = p <0.01; NF 0.2% = nitrofurazone 0.2% ointment; AF, BF and CF are aqueous, n-butanol and chloroform fractions of 80% methanol leaf extract of *A. aspera* (Amaranthaceae), respectively.

Table 4 Effect of the Solvent Fraction Ointments of 80% Methanol Leaf Extract of *A. aspera* on Tensile Strength in Rats

Treatment Group	Tensile Strength (g)	Tensile Strength (%)
LU	445.82 ± 42.21	—
SO	484.37 ± 73.22	8.74
NF 0.2%	876.15 ± 42.32*abcde	80.89
5% w/w AF	698.10 ± 65.61*a	43.09
10% w/w AF	779.14 ± 65.89*ae	60.89
5% w/w BF	736.12 ± 51.66*ae	51.97
10% w/w BF	835.58 ± 21.68*ade	72.51
5% w/w CF	739.31 ± 51.19*ae	52.63
10% w/w CF	873.15 ± 69.38*abcde	80.26

Notes: Values are expressed as mean ± SEM (n = 6 rats in each group) and analyzed by one-way ANOVA followed by post hoc Tuckey test; *compared with simple ointment, ^bcompared with 5% chloroform fraction, ^ccompared with 5% n-butanol fraction, ^dcompared with 5% aqueous fraction, ^ecompared with untreated group; LU = left untreated; w/w = weight by weight; SO = Simple ointment; * = p <0.01; NF 0.2% = nitrofurazone 0.2% ointment; AF, BF and CF are aqueous, n-butanol and chloroform fractions of 80% methanol leaf extract of *A. aspera* (Amaranthaceae), respectively.

manner ($R^2 = 0.988$ for exudate inhibition; $R^2 = 0.981$ for granuloma inhibition).

Only the middle and highest doses of the aqueous fraction (AF) significantly inhibited the formation of both inflammatory exudate and granuloma mass compared with 2% Tween 80 (p <0.01). The dose-dependent activity was also observed in AF ($R^2 = 0.972$ for exudate inhibition; $R^2 = 0.993$ for granuloma inhibition). However, the lowest dose of AF failed to show significant inhibition of exudate formation.

The standard drug, 10 mg/kg of indomethacin, significantly inhibited the formation of both exudates and granuloma (39.31 and 53.10%), respectively, compared with 2% Tween 80. A statistically significant difference was noted when all doses of the three fractions were compared with 2% Tween 80 in terms of granuloma inhibition (p <0.01). The 400 mg/kg of both the CF and BF showed a comparable inhibition of exudate formation with the standard drug. But the chloroform fraction was the most active fraction in inhibiting the formation of exudate and granuloma mass, as evidenced by the higher percentage of inhibition (Table 6).

Discussion

Herbal medicines have been shown to be beneficial in wound care. Medicinal plants promote the rate of wound healing with minimal pain, discomfort, and scarring to the patient.³⁴ Ointment formulations of medicinal plants could achieve wound healing.³⁵ This enhanced wound contraction by crude extract ointments might be related to the ability of plant extracts to promote the proliferation of epithelial cells.³⁶

Ointments prepared from solvent fractions had different wound healing activities in an excision wound model. Fast contraction rate and decreased period of epithelialization was observed in rats treated with the chloroform fraction ointment. The findings of this study on wound healing activity of the CF and n-BF of 80% methanol leaf extract of *A. aspera* showed a significantly increased rate of wound contraction in most post-wound days (p <0.01) and decreased period of epithelialization (p <0.01). This might be attributed to secondary metabolites (Table 7).^{37,38} Secondary metabolites could facilitate wound healing either individually or through their additive effects.³⁹ Tannins enhance wound healing through improving regeneration and organization of the new tissue through their astringent and antioxidant properties.^{29,39} Flavonoids reduce lipid peroxidation by preventing or slowing the onset of cell necrosis and improving vascularity and have astringent and antimicrobial properties.^{27,40}

During the process of wound healing, an infection mostly from *S.aureus* and anaerobic bacteria may extend the inflammatory phase of the wound and thus lead to the failure of wound healing.^{2,41} In-vitro study form chloroform and methanol root and shoot extracts of *A. aspera* showed significant activity against *Klebsiella species*, which could support the findings

Table 5 Anti-Inflammatory Effect of the Solvent Fractions of 80% Methanol Leave Extract of *A. aspera* on Carrageenan-Induced Paw Edema in Rats

Treatment Group	Basal Volume (mL)	Change in Paw Volume (Mean ± SEM) (mL) [Percentage Inhibition (%)]			
		1 Hour	2 Hours	3 Hours	4 Hours
2% Tween 80,10mL/kg	0.22±0.01	0.42 ± 01	0.43 ± 0.01	0.41 ± 0.01	0.40 ± 0.01
Indo-10mg/kg	0.22±0.1	0.29±0.01(24.79) ^{*ab}	0.26±0.20(39.99) ^{*ab}	0.22±0.01(47.18) ^{*ab}	0.18±0.01(53.33) ^{*abc}
100mg/kg AF	0.18± 0.02	0.38 ± 0.15(3.85)	0.37 ± 0.02(14.67)	0.35 ± 0.01(14.92)	0.31 ± 0.03(22.50) ^{*a}
200mg/kg AF	0.22± 0.01	0.36± 0.01(8.55)	0.31 ± 0.02(27.41) ^{*a}	0.24±0.01(37.09) ^{*ab}	0.22± 0.01(45.00) ^{*ab}
400mg/kg AF	0.23± 0.00	0.31±0.02(20.94) ^{*a}	0.34±0.029(29.34) ^{*a}	0.28±0.03(42.33) ^{*ab}	0.24±0.01(45.83) ^{*ab}
100mg/kg BF	0.22± 0.01	0.35 ±0.02(11.11)	0.34 ±0.02(21.24) ^{*a}	0.28±0.03(31.85) ^{*a}	0.24 ±0.01(39.16) ^{*a}
200mg/kg BF	0.23± 0.00	0.32±0.02(16.23) ^{*a}	0.33 ±0.00(22.78) ^{*a}	0.26±0,01(37.10) ^{*ab}	0.23 ±0.00(42.5) ^{*ab}
400mg/kg BF	0.22± 0.01	0.30±0.00(24.36) ^{*ab}	0.27±0.01(36.67) ^{*ab}	0.24±0.00(42.74) ^{*ab}	0.22 ±0.01(45.0) ^{*ab}
100mg/kgCF	0.21 ±0.02	0.33±0.02(13.68) ^{*a}	0.33±0.01(22.78) ^{*a}	0.28±0.01(31.85) ^{*a}	0.27 ±0.02(31.25) ^{*a}
200mg/kgCF	0.15± 0.02	0.30±0.02(24.36) ^{*ab}	0.26 ± 0.02(37.12) ^{*ab}	0.23±0.02(42.75) ^{*ab}	0.12± 0.03(51.25) ^{*abc}
400mg/kgCF	0.20 ±0.01	0.30±0.02(23.93) ^{*ab}	0.28 ± 0.02(35.91) ^{*ab}	0.22±0.01(44.76) ^{*ab}	0.19±0.090(52.50) ^{*abc}

Notes: Values are expressed as mean ± SEM (n = 6 rats in each group) and analyzed by one-way ANOVA followed by post hoc Tuckey test; ^acompared with 2% Tween 80, ^bcompared with 100 mg/kg aqueous fraction, ^ccompared with 100 mg/kg chloroform fraction; * = p <0.01; Indo = Indomethacin; AF, BF and CF are aqueous, n-butanol and chloroform fractions of 80% methanol leaf extract of *A. aspera* (*Amaranthaceae*), respectively.

Table 6 Effects of Solvent Fractions of 80% Methanol Leave Extract of *A. aspera* on Cotton Pellet-Induced Granuloma in Rats

Treatment Group	Mean Weight of Exudates in mg (Mean ± SEM)	% Inhibition of Exudation	Mean Weight of Granuloma in (mg) (Mean ± SEM)	% Inhibition of Granulation
2% Tween 80,10mL/kg	123.33 ± 0.54	–	143.70 ±0.77	–
Indo 10mg/kg	74.85 ± 2.01 ^{*ab1b2c1d1}	39.31	67.39± 0.83 ^{*a b1b2c1d1}	53.10
AF 100mg/kg	121.83 ± 0.97	1.22	132.54 ± 2.45 ^{*a}	7.76
AF 200mg/kg	95.33 ± 2.64 ^{*ab1}	22.71	98.15 ± 3.17 ^{*a b1}	31.69
AF 400mg/kg	84.56 ± 0.72 ^{*ab1c1d1}	31.44	75.42 ± 0.55 ^{*ab1b2}	47.51
BF 100mg/kg	100.85 ± 0.61 ^{* ab1}	18.47	80.04 ± 1.37 ^{*a b1}	44.30
BF 200mg/kg	91.37 ± 2.27 ^{*ab1}	25.92	76.50 ±0.93 ^{*ab1b2}	46.75
BF 400mg/kg	85.92 ± 1.94 ^{*ab1c1d1}	30.33	69.36 ± 1.06 ^{*ab1b2c1d1}	51.73
CF 100mg/kg	98.54 ± 1.26 ^{*ab1b2}	20.10	79.71± 1.4 ^{*ab1b2}	44.53
CF 200mg/kg	88.32 ± 1.81 ^{*ab1b2}	28.39	74.87 ± 0.87 ^{*ab1b2}	47.90
CF 400mg/kg	77.06 ± 2.77 ^{*ab1b2c1c2d1}	37.52	67.81 ± 0.67 ^{*ab1b2c1c2d1}	52.81

Notes: Values are expressed as mean ± SEM (n = 6 rats in each group) and analyzed by one-way ANOVA followed by post hoc Tuckey test; ^acompared with 2% Tween 80, ^{b1}compared with 100 mg/kg aqueous fraction, ^{b2}compared with 200 mg/kg aqueous fraction, ^{c1}100 mg/kg n-butanol fraction, ^{c2}200 mg/kg n-butanol fraction, ^{d1}compared with 100 mg/kg chloroform fraction; * = p <0.01; Indo= indomethacin; AF, BF and CF are aqueous, n-butanol and chloroform fractions of 80% methanol leaf extract of *A. aspera* (*Amaranthaceae*), respectively.

of the current study.¹¹ Tannins found in chloroform extract of *A. aspera* were also shown to inhibit bacterial growth.⁴²

Triterpenoidal saponins induced bacterial cell membrane disruption.⁴³ Hence, increased wound contraction and a reduced period of epithelialization in groups treated with CF and n-BF were compared with AF and SO (simple ointment) treated groups. Flavonoids could also promote wound healing through their astringent and antibacterial activities. Ndhlala reported that flavonoids, rutin, chlorogenic acid, and genistein, found in *A. aspera* have an antimicrobial effect which could promote wound healing.¹²

In the group treated with SO, a prolonged period of epithelial restructuring and wound closure was observed. But solvent fractions of 80% methanol leaf extract of *A. aspera* and NF 0.2% treated wounds were clean with healthy tissues. This might be attributed to the occurrence of microorganisms and their metabolites in the SO treated group, which inhibit wound contraction and weaken wound healing activity.

The increased tensile strength may be due to collagen synthesis, maturation, angiogenesis and stabilization of fibers.⁴⁴ Thus, the fractions might have roles in collagen synthesis, maturation, and stabilization. Hence, antioxidant and antimicrobial properties of phytochemicals found in the fractions could fasten the wound healing process. For

Table 7 Preliminary Phytochemical Screening of Solvent Fractions of 80% Methanol Leaf Extract of *A. aspera*

Secondary Metabolite	Aqueous Fraction	n-Butanol Fraction	Chloroform Fraction
Saponin	+	+	-
Terpenoids	+	+	+
Tanins	-	-	+
Flavonoid	+	+	+
Glycosides	+	+	+
Steroids	-	+	+
Alkaloids	+	+	+

Notes: (+, Present); (-, Absent).

instance, flavonoids are potent antioxidants and free radical scavengers which prevent oxidative cell damage.^{45,46} The hydroxylation and alkoxylation pattern of flavonoids plays an important role in determining their activity as antioxidants.⁴⁷

The previous study reported that saponin rich n-BF of the whole plant of *A. aspera* showed significant inhibition of pro-inflammatory cells and improved oxidative stress possibly due to the direct antioxidant effect of saponin coupled with an improvement in the body's natural antioxidant enzyme mediated defense.⁴⁸

The present in-vivo study showed that solvent fractions of 80% methanol leaf extract of *A. aspera* possess anti-inflammatory activity in a carrageenan-induced paw edema model in rats. The dose of 100 mg/kg of AF did not show significant anti-inflammatory activity at 1, 2 and 3 hr post-carrageenan injection but percentage inhibition of inflammation was highest at 4 hrs after inflammation was induced. All test doses of chloroform fraction showed significant anti-inflammatory activity at all time points in different percentages of inhibition ($p < 0.01$) but the highest percentage edema inhibition was observed with 400 mg/kg (52.50%) at 4 hrs post-induction ($p < 0.01$). This is in line with the in-vitro anti-inflammatory activity of chloroform fraction of *A. aspera* leaves.⁴⁹ Lower doses, 100 mg/kg, of AF and BF also exhibit edema inhibition but are incapable of reaching a significant level. This may be due to an insufficient concentration of an active constituent in a lower dose of fractions. The observed edema inhibition was prominent in the later phase of inflammation, which was similar to the effect of nonsteroidal anti-inflammatory drugs, such as indomethacin, indicating that the antiedematogenic activity is possibly mediated through a cyclooxygenase enzyme inhibitory pathway.⁵⁰

The anti-inflammatory effect of the fractions may possibly be associated with the activities of secondary metabolites.

Flavonoids significantly inhibit a number of inflammatory mediators and prevent the synthesis of prostaglandins.⁵¹ *Achyranthes aspera* also contains alkaloids and showed anti-inflammatory activity.⁵² Alkaloids prevent inflammation by blocking the metabolic pathway of arachidonic acid. It is evidenced by the antioxidant and anticarcinogenic effects of alkaloid fractions of *A. aspera* leaves.⁵³ These could be the possible reason for the highest percentage inhibition of inflammation by chloroform fraction in the carrageenan-induced hind paw edema model.

In the cotton pellet-induced granuloma model, all tested doses of the solvent fractions of 80% methanol leaf extract of *A. aspera* showed statistically significant inhibition of both exudate and granuloma formation. In this model, all tested doses of the CF also showed a significant inhibition of granuloma formation. The significant inhibitory effect of *A. aspera* on formation of exudates ($p < 0.01$) (Table 6) substantiates the findings of the carrageenan-induced acute model, ie both results strengthen the effectiveness of the CF in inhibiting the exudative and proliferative component of inflammation. The statistical significant inhibition of granuloma formation ($p < 0.01$), on the other hand, rationalizes the effectiveness of this fraction in inhibiting the proliferative phase of inflammation evidenced by the highest percentage of granuloma inhibition (52.81%).

The overall order of efficacy in inhibiting the exudative phase of acute inflammation, as evidenced by the percentage inhibition of carrageenan-induced rat paw edema in the acute model and the cellular response of the proliferative phase of inflammation as evidenced by the percentage of exudate and granuloma inhibition in the chronic model, was found to be CF > BF > AF. Hence, the number of phytochemicals in the CF could be the highest and the most effective in inhibiting acute and chronic phases of inflammation.

In conclusion, all three fractions have wound healing and anti-inflammatory activities, of which the chloroform fraction was the most active. It was also observed that biologically active components were present which might be responsible for the activities. Further investigation, however, is required to confirm the present findings.

Disclosure

The authors reported no conflicts of interest in this work.

References

1. Farahpour MR, Habibi M. Evaluation of the wound healing activity of an ethanolic extract of Ceylon cinnamon in mice. *Vet Med (Praha)*. 2012;57(1):53–57. doi:10.17221/4972-VETMED

2. Bowler PG, Davies BJ. The microbiology of infected and noninfected leg ulcers. *Int J Dermatol.* 1999;38(8):573–578. doi:10.1046/j.1365-4362.1999.00738.x
3. Bowler PG. Wound pathophysiology, infection and therapeutic options. *Ann Med.* 2002;34(6):419–427. doi:10.1080/078538902321012360
4. Lazarus GS, Cooper DM, Knighton DR, et al. Definitions and Guidelines for Assessment of Wounds and Evaluation of Healing Back. *Arch Dermatol.* 1994;130:489–493. doi:10.1001/archderm.1994.01690040093015
5. Garg P, Sardana S. Pharmacological and therapeutic effects of ocimum sanctum. *Eur J Pharm Med Res.* 2016;3(8):637–640.
6. Mittal S, Dixit PK. International journal of comprehensive pharmacy natural remedies for wound healing: a literary review. *Int J Compr Pharm.* 2013;04(03):1–6.
7. Teklehaymanot T, Giday M, Medhin G, Mekonnen Y. Knowledge and use of medicinal plants by people around Debre Libanos monastery in Ethiopia. *J Ethnopharmacol.* 2006;13.
8. Dey A. Review Article *Achyranthes aspera* L: phytochemical and pharmacological aspects. *Int J Pharm Sci Rev Res.* 2011;9(2):72–82.
9. Begum RU. Antimicrobial studies of some selected medicinal plants. *Anc Sci Life.* 2002;XXI(4):230–239.
10. Jebashree HS, Kingsley SJ, Sathish ES, Devapriya D. Antimicrobial Activity of Few Medicinal Plants against Clinically Isolated Human Cariogenic Pathogens — an In Vitro Study. *Int Sch Res Netw.* 2011;2011:6.
11. Kaur M, Thakur Y, Rana RC. Antimicrobial Properties of *Achyranthes aspera*. *Anc Sci Life.* 2005;24(4):168–173.
12. Ndhilala AR, Ghebrehiwot HM, Ncube B, et al. Antimicrobial, anthelmintic activities and characterisation of functional phenolic acids of *Achyranthes aspera* Linn.: a medicinal plant used for the treatment of wounds and ringworm in east Africa. *Front Pharmacol.* 2015;6(NOV):1–8. doi:10.3389/fphar.2015.00274
13. Rao DS, Penmatsa T, Kumar AK, Reddy MN, Gautam NS. Antibacterial activity of aqueous extracts of Indian chewing sticks on dental plaque: an in vitro study. *J Pharm.* 2018;6(Suppl 1):s140–5.
14. National acadamy council. *Committee for the Update of the Guide for the Care and Use of Laboratory Animals. Guide for the Care and Use of Laboratory Animals.* 8th ed. Washinton DC: The national achadampy press; 2011:248.
15. Kalaivanan C, Chandrasekaran M, Venkatesalu V. Screening of selected medicinal plants for in vitro antidermatophytic activity. *J Mycol Med.* 2013;23(4):247–254. doi:10.1016/j.mycmed.2013.09.004
16. Sarker S, Latif Z, Gray AI. 2005. *Nat Products Isolation Springer Sci Business Media.* 2005;2005.
17. Fentahun S, Makonnen E, Awas T, Giday M. In vivo antimalarial activity of crude extracts and solvent fractions of leaves of *Strychnos mitis* in *Plasmodium berghei* infected mice. *BMC Complement Altern Med.* 2017;1–12. doi:10.1186/s12906-016-1529-7
18. Oecd guidelines for the testing of chemicals. 2008.
19. OECD 404 Guideline for the Testing of Chemicals: acute Dermal Irritation/Corrosion.2002. Adopted: 2017. OECD 402 Guideline for the testing of chemicals.AcuteDermal Toxicity: fixedDose Procedure; 2017. Available from: <http://www.oecd.org/termsandconditions/>. Accessed April 23, 2021.
20. Thakur R, Jain N, Pathak R, Sandhu SS. Practices in Wound Healing Studies of Plants. *Evidence-Based Complementary and Alternative Medicine: eCAM.* 2011;2011. doi:10.1155/2011/438056
21. Nagar HK, Srivastava AK, Srivastava R, Kurmi ML, Chandel HS, Ranawat MS. Pharmacological Investigation of the Wound Healing Activity of *Cestrum nocturnum* (L.). *Ointment in Wistar Albino Rats J Pharm.* 2016;2016:8.
22. Shivhare Y, Singour PK, Patil UK, Pawar RS. Wound healing potential of methanolic extract of *Trichosanthes dioica* Roxb (fruits) in rats. *J Ethnopharmacol.* 2010;127(3):614–619. doi:10.1016/j.jep.2009.12.015
23. Liu H, Lin S, Xiao D, Zheng X, Gu Y, Guo S. Evaluation of the wound healing potential of *resina draconis* (*Dracaena cochinchinensis*) in Animal Models Evaluation of the Wound Healing Potential of *Resina Draconis* (*Dracaena cochinchinensis*) in Animal Models. *Evidence-Based Complement Altern Med.* 2013;2014;(May):30. doi:10.1152/ajpplegacy.1975.229.3.570
24. Pawar RS, Chaurasiya PK, Rajak H, Singour PK. Wound healing activity of *Sida cordifolia* Linn. *rats.* 2013;45(5):474–479.
25. Wang J, Ruan J, Cai Y, Luo Q, Xu H, Wu Y. In vitro and in vivo evaluation of the wound healing properties of *Siegesbeckia pubescens*. *J Ethnopharmacol.* 2011;134(3):1033–1038. doi:10.1016/j.jep.2011.02.010
26. Ilango K, Chitra V. Wound Healing and Anti-oxidant Activities of the Fruit Pulp of *Limonia Acidissima* Linn (Rutaceae) in Rats. *Trop J Pharm Res.* 2010;9(June):223–230. doi:10.4314/tjpr.v9i3.56281
27. Fikru A, Makonnen E, Eguale T, Debella A, Abie G. Evaluation of in vivo wound healing activity of methanol extract of *Achyranthes aspera* L. *J Ethnopharmacol.* 2012;143(2):469–474. doi:10.1016/j.jep.2012.0
28. Mulisa E, Asres K, Engidawork E. Evaluation of wound healing and anti-inflammatory activity of the rhizomes of *Rumex abyssinicus* J. (Polygonaceae) in mice. *BMC Complement Altern Med.* 2015;15:341. doi:10.1186/s12906-015-0878-y
29. Ayal G, Belay A, Kahaliw W. Evaluation of wound healing and anti-inflammatory activity of the leaves of *calpurnia aurea* (ait.) Benth (fabaceae) in mice. *Biochem Pharmacol.* 2019;100:151. doi:10.1016/j.wndm.20
30. Afsar K, Rajesh kumar J, Venu Gopal PR. Assessment of Anti-inflammatory activity of *Artemisia vulgaris* leaves by Cotton Pellet Granuloma method in wistar albino rats. *J Pharm Res.* 2014;1:547.
31. Aziz TA, Marouf BH, Ahmed ZA, Hussain SA. Anti-Inflammatory Activity of Silibinin in Animal Models of Chronic Inflammation. *Am J Pharmacol Sci.* 2014;2(January):7–11.
32. Sasiidharan S, Chen Y, Saravanan D, et al. Extraction, Isolation And Characterization Of Bioactive Compounds From Plants Extracts Institute For Research In Molecular Medicine (INFORM), Universiti Sains Malaysia, Minden 11800. *African J Tradit Complement Altern Med.* 2011;8:1–10.
33. Ayoola GA, Coker HAB, Adesegun SA, et al. Phytochemical Screening and Antioxidant Activities of Some Selected Medicinal Plants Used for Malaria Therapy in Southwestern Nigeria. *Trop J Pharm Res.* 2008;7(September):1019–1024.
34. Schultz GS, Sibbald RG, Falanga V, et al. Wound bed preparation: a systematic approach to wound management. *Wound Rep Reg.* 2003;11(2):1–28. doi:10.1046/j.1524-475X.11.s2.1.x
35. Zeng Q, Xie H, Song H, et al. In Vivo Wound Healing Activity of *Abrus cantoniensis* Extract. *Evidence-Based Complement Altern Med.* 2016;2016:7. doi:10.1155/2016/6568528
36. Gebrehiwot M, Asres K, Bisrat D, Mazumder A, Lindemann P, Bucar F. Evaluation of the wound healing property of *Commiphora guidottii* Chiov. *BMC Complement Altern Med.* 2015;15(1):1–11. doi:10.1186/s12906-015-0813-2
37. Krishnaveni A, Thakur SR. Pharmacognostical And Preliminary Phytochemical Studies Of *Achyranthes*. *Anc Sci Life.* 2006;XXVI (1–2):1–5.
38. Mekonnen A, Sidamo T, Asres K, Engidawork E. In vivo wound healing activity and phytochemical screening of the crude extract and various fractions of *Kalanchoe petitiiana* A. Rich (Crassulaceae) leaves in mice. *J Ethnopharmacol.* 2013;145(2):638–646. doi:10.1016/j.jep.2012.12.002
39. Agyare C, Bempah SB, Boakye YD, Ayande PG, Adarkwa-yiadom M, Mensah KB. Evaluation of Antimicrobial and Wound Healing Potential of *Justicia flava* and *Lannea welwitschii*. *Evidence-Based Complement Altern Med.* 2013;2013:1–10. doi:10.1155/2013/632927

40. Talukder FZ, Khan KA, Uddin R, Jahan N, Alam A. In vitro free radical scavenging and anti-hyperglycemic activities of *Achyranthes aspera* extract in alloxan-induced diabetic mice. *Drug Discov Therapeutics*. 2012;6(6):298–305.
41. Abo A, Olugbuyiro JAO, Famakinde SA. Anti-infective and wound healing properties of *flabellaria paniculata*. *African J Biomed Res*. 2004;7:85–87.
42. Khan TJ, Abbas G, Ahmad B, et al. Antibacterial activity of vacuum liquid chromatography (vlc) isolated fractions of chloroform extracts of seeds of *achyranthes aspera*. *J Chem Soc Pakistan*. 2012;34(3):589–592.
43. Netala VR, Ghosh SB, Bobbu P, Anitha D, Tartte V. Triterpenoid saponins: a review on biosynthesis, Applications and mechanism of their action. *Int J Pharm Pharm Sci*. 2015;7(1):24–28.
44. Murti K, Kumar U. Enhancement of wound healing with roots of *Ficus racemosa* L. in albino rats. *Asian Pac J Trop Biomed*. 2012;2(4):276–280. doi:10.1016/S2221-1691(12)60022-7
45. Arun M, Satish S, Anima P. Evaluation of wound healing, antioxidant and antimicrobial efficacy of *Jasminum auriculatum* Vahl. *Leaves Avicenna J Phytomedicine*. 2016;6(3):295–304.
46. Raut BK. A study of antioxidant activity, mineral and total vitamin c contents of stem, leaves, and inflorescence spike of *achyranthes aspera* var. *Porphyrostachya* *Int J Phytopharm*. 2013;4(4):241–244.
47. Sharma V, Chaudhary U, Singh R, Janmeda P. Evaluation of quantitative and antioxidant activity of *Achyranthes aspera* roots and inflorescences. *Asian J Pharm*. 2014;8(1):1–7. doi:10.4103/0973-8398.134085
48. Kothavade PS, Bulani VD, Nagmoti DM, Deshpande PS, Gawali NB, Juvekar AR. Therapeutic Effect of Saponin Rich Fraction of *Achyranthes aspera* Linn. on Adjuvant-Induced Arthritis in Sprague-Dawley Rats. *Autoimmune Dis*. 2015;2015:8.
49. Khuda F, Iqbal Z, Khan A, Shah Y, Ahmad L. Evaluation of anti-inflammatory activity of selected medicinal plants of Khyber Pakhtunkhwa, Pakistan. *Pak J Pharm Sci*. 2014;27(July):365–368.
50. Burke A, Smyth E, FitzGerald GA. Analgesic - Antipyretic Agents, Pharmacotherapy of Goat. *Goodman Gilman's Pharmacology Basis Therapeutics*. 2006:671–715.
51. Sowemimo A, Onakoya M, Fageyinbo MS, Fadoju T. Studies on the anti-inflammatory and anti-nociceptive properties of *Blepharis maderaspatensis* leaves. *Brazilian J Pharmacogn*. 2013;23(5):830–835. doi:10.1590/S0102-695X2013000500016
52. Goyal BR, Mahajan SG, Goyal RK, Mehta AA, Pharmacy LMC. Beneficial Effect of *Achyranthes aspera* Linn. in Toluene-Di-Isocyanate Induced Occupational Asthma in Rats. *Pharmacology*. 2007;2:54.
53. Tahiliani P, Kar A. *Achyranthes aspera* elevates thyroid hormone levels and decreases hepatic lipid peroxidation in male rats. *J Ethnopharmacol*. 2000;71(3):527–532. doi:10.1016/S0378-8741(00)00170-7

Journal of Inflammation Research

Dovepress

Publish your work in this journal

The Journal of Inflammation Research is an international, peer-reviewed open-access journal that welcomes laboratory and clinical findings on the molecular basis, cell biology and pharmacology of inflammation including original research, reviews, symposium reports, hypothesis formation and commentaries on: acute/chronic inflammation; mediators of inflammation; cellular processes; molecular

mechanisms; pharmacology and novel anti-inflammatory drugs; clinical conditions involving inflammation. The manuscript management system is completely online and includes a very quick and fair peer-review system. Visit <http://www.dovepress.com/testimonials.php> to read real quotes from published authors.

Submit your manuscript here: <https://www.dovepress.com/journal-of-inflammation-research-journal>