

Association analysis of *DACT1* genetic variants and gastric cancer risk in a Chinese Han population: a case–control study

Chi Huang,^{1,*} Younan Wang,^{1,*} Hao Fan,^{1,*} Xiang Ma,^{1,*} Ran Tang,¹ Xiangkun Huan,¹ Yi Zhu,² Zekuan Xu,¹ Hao Xu,¹ Li Yang¹

¹Department of General Surgery, The First Affiliated Hospital of Nanjing Medical University, ²Institute of Tumor Biology, Jiangsu Province Academy of Clinical Medicine, Nanjing, People's Republic of China

*These authors contributed equally to this work

→ Video abstract



Point your SmartPhone at the code above. If you have a QR code reader the video abstract will appear. Or use:

<http://youtu.be/b-0-HFa7Gko>

Correspondence: Li Yang
Department of General Surgery,
The First Affiliated Hospital of Nanjing
Medical University, 300 Guangzhou
Road, Nanjing 210029, People's
Republic of China
Tel/fax +86 25 8371 8836
Email pwkyangli@163.com

Purpose: Disheveled-binding antagonist of beta-catenin 1 (*DACT1*) is involved in tumorigenesis through influencing cell apoptosis and proliferation. We aimed to investigate the effect of three tag single-nucleotide polymorphisms (SNPs) in *DACT1* (rs863091 C>T, rs17832998 C>T, and rs167481 C>T) on the occurrence of gastric cancer (GC), their association with specific clinical characteristics, and consideration of the functional relevance of GC-related SNPs.

Subjects and methods: In this hospital-based case–control study, the genotypes were acquired using the TaqMan-MGB method consisting of 602 cases and 602 controls. *DACT1* messenger RNA level was evaluated in 76 paired tumoral and normal tissues using quantitative reverse transcription–polymerase chain reaction. Logistic regression was used to evaluate the associations among the *DACT1* SNPs and GC.

Results: We found a significant association between the variant genotypes of rs863091 and decreased risk of GC (TT vs CC: $P=0.009$, adjusted odds ratio =0.34, 95% confidence interval =0.15–0.77; CT + TT vs CC: $P=0.030$, adjusted odds ratio =0.74, 95% confidence interval =0.57–0.97). In further stratified analyses, rs863091 variant genotypes were associated with a reduced risk of GC in younger individuals (<60 years) and males. No overall significant association with GC risk was observed in SNP rs17832998 or rs167481. Additionally, we assessed *DACT1* messenger RNA levels in GC and found that *DACT1* expressions of individuals carrying CT and TT genotypes were much higher than those with CC genotype.

Conclusion: Our findings suggest that the *DACT1* rs863091 C>T polymorphism may be associated with a decreased risk of GC in the Chinese Han population and influence *DACT1* expression.

Keywords: gastric cancer, *DACT1*, polymorphism, gene expression

Introduction

Gastric cancer (GC) is the third leading cause of cancer mortality worldwide, although the incidence in some areas has decreased.^{1,2} Since most patients are diagnosed at advanced stages with limited treatment approaches, GC continues to exhibit a serious health burden. The contributing factors for GC are complicated and not entirely clear. Cumulative evidence has shown that apart from environmental risk factors, genetic factors are also important for the development and progression of GC.³ Moreover, our previous studies have revealed the significant association of polymorphisms in H19, miR-34b/c, JAK2, and RAGE with the susceptibility to gastric carcinogenesis.^{4–7}

As a member of DACT family, disheveled-binding antagonist of beta-catenin 1 (*DACT1*) plays an important role in regulating the planar cell polarity (PCP) pathway.^{8–10} PCP pathway, a significant branch of noncanonical Wnt signaling, is activated through

the binding of noncanonical Wnt proteins to transmembrane receptors (Frizzled), which results in recruiting cytoplasmic disheveled (Dvl) to the plasma membrane. The PCP pathway affects various cellular processes and plays a significant role in the process of carcinogenesis.¹¹ Increasing evidence has shown that *DACT1* is associated with several human malignancies, such as GC,¹² breast cancer,¹³ liver cancer,¹⁴ lung cancer,¹⁵ and colorectal cancer.¹⁶ As to GC, *DACT1* is a functional antioncogene that is mainly deactivated by promoter methylation. *DACT1* may inhibit nuclear factor kappa B (NF- κ B) signaling pathway and thus suppresses tumorigenesis by promoting cell apoptosis and decreasing cell proliferation.¹² However, the associations of genetic variants in the *DACT1* with risk in malignant diseases have not been reported before, including GC.

In this research, we suggested that single-nucleotide polymorphisms (SNPs) in *DACT1* gene were likely to impact the susceptibility to GC. To certify this, we focused on three *DACT1* tag SNPs (rs863091, rs17832998, and rs167481) in a case–control study of 602 patients with GC and 602 healthy controls from the Chinese Han population. Furthermore, we studied the role of the risk-associated polymorphism in regulating its messenger RNA (mRNA) expression in GC tissues and normal tissues, in order to further explore its potential regulation mechanism in adjusting disease risk.

Subjects and methods

Subjects

This hospital-based case–control study consisted of 602 patients diagnosed with GC and 602 noncancer controls. All patients were successively enrolled with newly diagnosed, histopathologically confirmed GC in the First Affiliated Hospital of Nanjing Medical University between 2009 and 2015. The patients without previous history of cancer or previous chemotherapy or radiotherapy participated in our study. As a control group, all age- and sex-matched subjects without self-reported history of malignancies or precancerous condition of GC were randomly recruited from the Department of General Surgery in the same regions during the same period. The control group mainly suffered from varicose veins, aneurysm, hernia, and abdominal trauma. All subjects with no genetic relationship in this study were ethnic Han Chinese from Jiangsu Province or its circumjacent areas. After signing the written informed consent, each patient donated a 5 mL venous blood sample. Subjects' data including age, sex, diabetes, hypertension, smoking history, and residence were collected by a standard questionnaire.

Subjects were considered as smokers if they previously or currently smoked ≥ 10 cigarettes per day for at least 2 years. Individuals who had sustained systolic blood pressure > 140 mmHg and diastolic blood pressure > 90 mmHg and/or were presently receiving antihypertensive treatment were considered as hypertensive. Subjects were considered as diabetic if they had a fasting plasma glucose ≥ 7 mmol/L or random plasma glucose ≥ 11 mmol/L and with typical symptoms of hyperglycemia (polyuria, polydipsia, and weight loss) or requiring insulin or oral hypoglycemic agents. Rural or urban residence was determined by a questionnaire according to the addresses and data of the subjects collected. The Ethics Committee of the First Affiliated Hospital of Nanjing Medical University approved this study, and written informed consent was obtained from each participant before sample collection.

SNP selection

We obtained genotype data for Han Chinese within *DACT1* released by HapMap public database (HapMap Data Rel 27 Phase II + III, Feb09, on NCBI B36 assembly, dbSNP b126) and used the Haploview program (Broad Institute, Cambridge, MA, USA) to choose the tag SNPs with r^2 (linkage disequilibrium correlation coefficient) > 0.8 and minor allele frequency ≥ 0.05 . As a result, three tag SNPs were chosen in the present research: rs863091, rs17832998, and rs167481.

Genotyping

As described in our previous study, reference techniques were used to extract genomic DNA from peripheral blood leukocytes.¹⁷ TaqMan-MGB method (Thermo Fisher Scientific, Waltham, MA, USA) was used to acquire all the genotypes of the three SNPs (ie, rs863091, rs17832998, and rs167481). The sequences of the probes and primers used in genotyping are summed up in Table 1. Utilization of 5 μ L 2 \times TaqMan Genotyping Master Mix, 0.125 μ L probes, 0.25 μ L primers, 10 ng genomic DNA, and 2.5 μ L double distilled water composed the 10 μ L reaction mixture. Amplification was performed at 95°C for 10 minutes followed by 40 cycles of 95°C for 15 seconds and 60°C for 1 minute. In accordance with the manufacturer's instructions, the 96-well ABI StepOnePlus Real-Time PCR System (Thermo Fisher Scientific) was used to conduct the amplifications, and allelic discrimination was performed using Stepone v2.2.2 software (Thermo Fisher Scientific). In order to do quality control, each reaction plate contained two positive experimental controls with known genotype and two negative experimental controls (water).⁴ The call rate for each SNP was 100%.

Table 1 Information on primers and probes

SNPs	Primer sequence (5'-3')	Probe sequence
rs863091	F-CACCCTGTAAGGACCAACAAACC	C:FAM-TGTGTTCAGAGCCCCG-MGB
C>T	R-GCAGACACGCCTGTTTCGA	T:HEX-TGTGTTAGAGCCCCG-MGB
rs17832998	F-TGCCTCCGACCTTCAGAGTAAG	C:FAM-CATGCTCGGTGTTCC-MGB
C>T	R-GGGCTGTACAACCTTGTCTCCTG	T:HEX-CATGTTCCGGTGTTC-MGB
rs167481	F-GCACCTTTCACCTGGTGGAAA	C:FAM-ATATTCTGATAGCAG-MGB
C>T	R-AGACCTACAATATTGGGACAGGA	T:HEX-ATATTTTATAGCAG-MGB

Abbreviations: SNPs, single-nucleotide polymorphisms; FAM, carboxyfluorescein; HEX, hexachloro-fluorescein; MGB, Minor Groove Binder; F, forward; R, reverse.

Additionally, a random number of ~10% of the samples were subjected to repeated assays by a different person, and the repeatability was 100%.

Real-time polymerase chain reaction analysis of *DACT1*

DACT1 mRNA expression levels were analyzed by quantitative reverse transcription–polymerase chain reaction (PCR) using total RNA extracted from 76 pairs of cancerous and normal gastric tissue samples using Trizol reagent (Thermo Fisher Scientific). Total RNA was reversely transcribed to first-strand complementary DNA using Primescript RT Reagent (Takara, Otsu, Japan). The real-time PCR primers for *DACT1* were as follows: forward primer 5'-TGTGAATCCCAAGTACCAGTGT-3' and reverse primer 5'-CCGTCAGACAAAGGAGAAACATT-3'. β -Actin was used to normalize *DACT1* gene expression levels and amplified with forward primer 5'-AGAAAATCTGGCACCACACC-3' and reverse primer 5'-TAGCACAGCCTGGATAGCAA-3'. Amplification reactions were executed in a 10 μ L reaction volume containing 0.2 μ L primers, 5 μ L Master mix, and 100 ng complementary DNA. The cycling conditions were set at 95°C for 5 minutes, followed by 40 cycles at 95°C for 10 seconds and 60°C for 30 seconds. Real-time PCR was carried out using FastStart Universal SYBR-Green Master (Vazyme, Nanjing, People's Republic of China) with the StepOnePlus Real-Time PCR System in triplicate. The $2^{-\Delta CT}$ algorithm was used for calculating the expression of individual *DACT1* relative to expression of β -actin.⁴

Statistical analysis

Differences in genotype frequencies of the three SNPs between cases and controls and demographic characteristics were calculated using Pearson's χ^2 tests (for categorical variables) and Student's *t*-test (for continuous variables). The Mann–Whitney rank sum test was used to analyze the quantitative variables departing from the normal distribution. The Hardy–Weinberg equilibrium was assessed for

controls using the goodness-of- χ^2 test. Associations between the genotypes and alleles and risk of GC were estimated by odds ratios (ORs) and 95% confidence intervals (CIs). Woolf approximation method was used to compute the crude OR, and the unconditional logistic regression method was used to assess adjusted OR, with adjustments for age, sex, hypertension, diabetes, smoking status, and residence. We used the SPSS Version 22.0 (IBM Corporation, Armonk, NY, USA) to perform statistical analyses. All *P*-values in our study were two-sided, and *P*<0.05 was considered as significant.

Results

Characteristics of the study subjects

A total of 602 GC cases and 602 controls were recruited in this study. The baseline characteristics of GC cases and controls are presented in Table 2. No significant differences between GC cases and cancer-free controls regarding age and sex (*P*=0.087 and 0.067) were found, which indicated that the frequency matching was adequate. The mean age was 60.6±10.7 years for cancer patients and 59.5±12.9 years for controls, respectively. There was no significant difference in distributions of hypertension, diabetes, and residence between cases and controls. The only exception was that smoking was more frequently distributed among patients with GC than controls.

Associations of *DACT1* tag SNPs and GC risk

Table 3 presents the association between the genotype of *DACT1* SNPs and risk of GC. In the controls, all observed genotype frequencies were in accordance with the Hardy–Weinberg equilibrium (*P*=0.055 for rs863091, *P*=0.404 for rs17832998, and *P*=0.659 for rs167481). To our data, we found that SNP rs863091 was associated with GC risk. In SNP rs863091, the T allele frequency was obviously lower in the case group (12.2%; T vs C: *P*=0.007, adjusted OR =0.72, 95% CI =0.58–0.91) than the control group (16.1%). Compared with the CC genotype, the genotypes

Table 2 Demographic information

Characteristics	Cases (N=602)	Controls (N=602)	P-value
Age (years) ^a	60.6±10.7	59.5±12.9	0.087
Sex, n (%)			0.067
Female	164 (27.2)	193 (32.1)	
Male	438 (72.8)	409 (67.9)	
Hypertension, n (%)			0.569
No	430 (71.4)	421 (69.9)	
Yes	172 (28.6)	181 (30.1)	
Diabetes, n (%)			0.174
No	541 (89.9)	526 (87.4)	
Yes	61 (10.1)	76 (12.6)	
Smoking, n (%)			0.012
Never	474 (78.7)	508 (84.4)	
Ever	128 (21.3)	94 (15.6)	
Residence, n (%)			0.116
Rural	358 (52.6)	331 (48.0)	
Urban	244 (47.4)	271 (52.0)	
Tumor differentiation, n (%)			
Well	34 (5.6)		
Moderate	122 (20.3)		
Poor	446 (74.1)		
Depth of tumor infiltration, n (%)			
T1	90 (14.9)		
T2	68 (11.3)		
T3	270 (44.9)		
T4	174 (28.9)		
Lymph node metastasis, n (%)			
Negative	196 (32.6)		
Positive	406 (67.4)		
Localization, n (%)			
Cardia	265 (44.0)		
Noncardia	337 (56.0)		

Notes: The bold value indicates statistically significant data. ^aMean ± SD.

TT and (CT + TT) were associated with a significantly decreased risk of GC (TT vs CC: $P=0.009$, adjusted OR =0.34, 95% CI =0.15–0.77; CT + TT vs CC: $P=0.030$, adjusted OR =0.74, 95% CI =0.57–0.97) after adjustment for age, sex, smoking status, residence, hypertension, and diabetes. However, no significant association with GC risk was observed in SNP rs17832998 or rs167481.

The genotype–phenotype correlation between rs863091 and *DACT1* expression

In order to investigate the genotype–phenotype correlation between rs863091 and *DACT1* expression, we further analyzed the *DACT1* mRNA expression levels in 76 pairs of GC and normal tissue samples with different genotypes. As illustrated in Figure 1A, compared with the CC genotypes (0.10±0.12 [n=47]), the relative *DACT1* mRNA expression

levels in samples with CT (0.21±0.18 [n=25]), TT (0.28±0.16 [n=4]), and CT + TT (0.22±0.17 [n=29]) genotypes were significantly higher ($P<0.05$, $P<0.01$, and $P<0.05$, respectively) in GC tissue specimens. However, as to the relative *DACT1* mRNA expression levels in normal tissue samples, no significant differences between CC (0.10±0.12 [n=47]) and CT (0.08±0.07 [n=25]), TT (0.10±0.07 [n=4]), or CT + TT (0.09±0.07 [n=29]) genotypes of the rs863091 were found (Figure 1B). We did not investigate the allele-specific effect of rs17832998 and rs167481 on *DACT1*, because their associations with GC risk were not observed.

Stratified analysis of polymorphism and GC risk

We conducted stratified analyses for *DACT1* rs863091, rs17832998, and rs167481 polymorphisms based on age, sex, smoking, and residence status, which may have potential influence on genetic effect (Tables 4–6). As to rs863091, a reduced risk of GC associated with the variant genotypes was observed in younger subjects (age <60 years) ($P=0.006$, adjusted OR =0.58, 95% CI =0.39–0.85) but not in older subjects ($P=0.725$, adjusted OR =0.94, 95% CI =0.66–1.34). In male subjects, the rare genotypes were associated with a decreased risk of GC ($P=0.025$, adjusted OR =0.70, 95% CI =0.51–0.96), whereas the association was not statistically significant in female subjects ($P=0.482$, adjusted OR =0.84, 95% CI =0.50–1.38). We did not find significant association of polymorphism with the GC susceptibility in terms of smoking status and residence. No significant association with GC risks in any stratified analysis was evident in *DACT1* rs17832998 or rs167481.

We also conducted stratified analyses according to tumor differentiation, depth of tumor infiltration, lymph node metastasis, and localization and found no obvious correlations between the variant genotypes and the clinical features of GC (Tables 7–9).

Discussion

This case–control study is the first to evaluate the association between three tag SNPs in *DACT1* genes and the risk of GC in a Chinese Han population. In our findings, the *DACT1* rs863091 SNP was related to a decreased risk of GC, especially in younger subjects (age <60 years) and male subjects. The results indicate that the T allele of *DACT1* rs863091 may be a protective factor against GC. In the stratified analysis, we identified more prominent protective effect of rs863091 GC variant genotypes in younger subjects (age <60 years) and males. The difference in age may be

Table 3 Association between *DACT1* gene polymorphisms and risk of gastric cancer

Genotypes	Cases, n (%)	Controls, n (%)	Crude OR (95% CI)	P-value	Adjusted OR (95% CI) ^a	P-value
Overall	602	602				
rs863091						
CC	463 (76.9)	430 (71.4)	1		1	
CT	131 (21.8)	150 (24.9)	0.81 (0.62–1.06)	0.127	0.80 (0.61–1.05)	0.101
TT	8 (1.3)	22 (3.7)	0.34 (0.15–0.77)	0.009	0.34 (0.15–0.78)	0.011
CT + TT	139 (23.1)	172 (28.6)	0.75 (0.58–0.97)	0.030	0.74 (0.57–0.97)	0.026
Allelic						
C	1,057 (87.8)	1,010 (83.9)	0.72 (0.58–0.91)	0.007		
T	147 (12.2)	194 (16.1)				
HWE		0.055				
rs17832998						
CC	365 (62.6)	377 (62.6)	1		1	
CT	218 (36.2)	203 (33.7)	1.11 (0.87–1.41)	0.396	1.11 (0.88–1.42)	0.381
TT	19 (3.2)	22 (3.7)	0.89 (0.48–1.68)	0.722	0.88 (0.47–1.67)	0.701
CT + TT	237 (39.4)	225 (37.4)	1.09 (0.86–1.37)	0.477	1.09 (0.86–1.38)	0.458
Allelic						
C	948 (78.7)	957 (79.5)	1.05 (0.86–1.27)	0.688		
T	256 (21.3)	247 (20.5)				
HWE		0.404				
rs167481						
CC	161 (26.7)	176 (29.2)	1		1	
CT	301 (50.0)	294 (48.9)	1.12 (0.86–1.46)	0.409	1.11 (0.85–1.45)	0.464
TT	140 (23.3)	132 (21.9)	1.16 (0.84–1.60)	0.365	1.13 (0.82–1.57)	0.447
CT + TT	441 (73.3)	426 (70.8)	1.13 (0.88–1.46)	0.336	1.12 (0.87–1.45)	0.371
Allelic						
C	623 (51.7)	646 (53.7)	1.08 (0.92–1.27)	0.369		
T	581 (48.3)	558 (46.3)				
HWE		0.659				

Notes: The bold values indicate statistically significant data. ^aAdjusted for age, sex, smoking status, residence, hypertension, and diabetes.

Abbreviations: CI, confidence interval; *DACT1*, disheveled-binding antagonist of beta-catenin 1; HWE, Hardy–Weinberg equilibrium; OR, odds ratio.

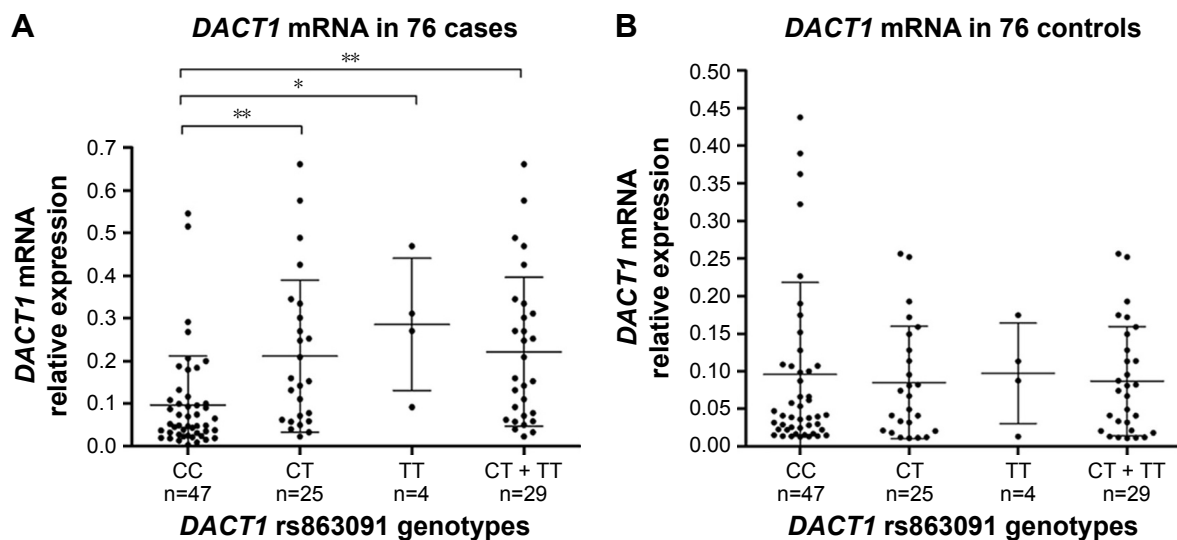


Figure 1 Correlation between rs863091 genotypes and expression of *DACT1* mRNA.

Notes: (A) Genotype–phenotype correlation for rs863091 and relative expression levels of *DACT1* mRNA in 76 GC tissues. Relative *DACT1* mRNA expression levels were significantly higher for the CT (0.21 ± 0.18), TT (0.28 ± 0.16), and CT + TT genotypes (0.22 ± 0.17) than the CC genotype (0.10 ± 0.12); * $P < 0.05$ and ** $P < 0.01$. (B) Genotype–phenotype correlation for rs863091 and relative expression levels of *DACT1* mRNA in 76 normal gastric tissues. Relative *DACT1* mRNA expression levels were similar among the three groups with rs863091 CC, CT, and TT genotypes.

Abbreviations: *DACT1*, disheveled-binding antagonist of beta-catenin 1; GC, gastric cancer; mRNA, messenger RNA.

Table 4 Stratified analyses for *DACT1* rs863091 genotypes in cases and controls

Variables	CT + TT vs CC for rs863091		Allelic ORs and 95% CIs for rs863091	
	Cases, n (%)	Controls, n (%)	Adjusted OR (95% CI) ^a	P-value
Age (years), mean				
≥60	85 (14.1)/256 (42.5)	80 (13.3)/229 (38.0)	0.94 (0.66–1.34)	0.725
<60	54 (9.0)/207 (34.4)	92 (15.3)/201 (33.4)	0.58 (0.39–0.85)	0.006
Sex				
Females	36 (6.0)/128 (21.3)	48 (8.0)/145 (24.1)	0.84 (0.50–1.38)	0.482
Males	103 (17.1)/335 (55.6)	124 (20.6)/285 (47.3)	0.70 (0.51–0.96)	0.025
Smoking status				
Smokers	26 (4.3)/102 (16.9)	29 (4.8)/65 (10.8)	0.60 (0.32–1.14)	0.119
Nonsmokers	113 (18.8)/361 (60.0)	143 (23.8)/365 (60.6)	0.79 (0.59–1.05)	0.100
Residence				
Rural	90 (15.0)/268 (44.5)	99 (16.4)/232 (38.5)	0.78 (0.56–1.10)	0.157
Urban	49 (8.1)/195 (32.4)	73 (12.1)/198 (32.9)	0.69 (0.46–1.04)	0.079

Notes: The bold values indicate statistically significant data. ^aAdjusted for age, sex, smoking status, residence, hypertension, and diabetes. CT+TT vs CC was expressed as CT+TT/CC.

Abbreviations: CI, confidence interval; *DACT1*, disheveled-binding antagonist of beta-catenin 1; OR, odds ratio.

Table 5 Stratified analyses for *DACT1* rs17832998 genotypes in cases and controls

Variables	CT + TT vs CC for rs17832998		Allelic ORs and 95% CIs for rs17832998	
	Cases, n (%)	Controls, n (%)	Adjusted OR (95% CI) ^a	P-value
Age (years), mean				
≥60	134 (22.3)/207 (34.4)	123 (20.4)/186 (30.9)	0.98 (0.71–1.36)	0.924
<60	103 (17.1)/158 (26.2)	102 (17.0)/191 (31.7)	1.23 (0.87–1.75)	0.237
Sex				
Females	53 (8.8)/111 (18.4)	75 (12.5)/118 (19.6)	0.74 (0.47–1.15)	0.173
Males	184 (30.6)/254 (42.2)	150 (24.9)/259 (43.0)	1.26 (0.95–1.68)	0.105
Smoking status				
Smokers	45 (7.5)/83 (13.8)	33 (5.5)/61 (10.1)	0.95 (0.53–1.70)	0.861
Nonsmokers	192 (31.9)/282 (46.8)	192 (31.9)/316 (52.5)	1.10 (0.85–1.43)	0.468
Residence				
Rural	139 (23.1)/219 (36.4)	114 (18.9)/217 (36.1)	1.21 (0.89–1.66)	0.227
Urban	98 (16.3)/146 (24.2)	111 (18.4)/160 (26.6)	0.95 (0.66–1.35)	0.758

Notes: ^aAdjusted for age, sex, smoking status, residence, hypertension, and diabetes. CT+TT vs CC was expressed as CT+TT/CC.

Abbreviations: CI, confidence interval; *DACT1*, disheveled-binding antagonist of beta-catenin 1; OR, odds ratio.

Table 6 Stratified analyses for *DACT1* rs167481 genotypes in cases and controls

Variables	CT + TT vs CC for rs167481		Allelic ORs and 95% CIs for rs167481	
	Cases, n (%)	Controls, n (%)	Adjusted OR (95% CI) ^a	P-value
Age (years), mean				
≥60	248 (41.2)/93 (15.4)	214 (35.5)/95 (15.8)	1.14 (0.80–1.61)	0.465
<60	193 (32.1)/68 (11.3)	212 (35.2)/81 (13.5)	1.06 (0.73–1.55)	0.757
Sex				
Females	119 (19.8)/45 (7.5)	138 (22.9)/55 (9.1)	1.03 (0.64–1.64)	0.917
Males	322 (53.4)/116 (19.3)	288 (47.9)/121 (20.1)	1.15 (0.85–1.56)	0.377
Smoking status				
Smokers	95 (15.8)/33 (5.5)	65 (10.8)/29 (4.8)	1.29 (0.70–2.36)	0.413
Nonsmokers	346 (57.5)/128 (21.2)	361 (60.0)/147 (24.4)	1.09 (0.83–1.45)	0.530
Residence				
Rural	257 (42.7)/101 (16.8)	241 (40.0)/90 (15.0)	0.94 (0.67–1.31)	0.702
Urban	184 (30.5)/60 (10.0)	185 (30.7)/86 (14.3)	1.46 (0.99–2.16)	0.059

Notes: ^aAdjusted for age, sex, smoking status, residence, hypertension, and diabetes. CT+TT vs CC was expressed as CT+TT/CC.

Abbreviations: CI, confidence interval; *DACT1*, disheveled-binding antagonist of beta-catenin 1; OR, odds ratio.

Table 7 Associations between *DACT1* rs863091 genotypes and clinicopathologic characteristics of gastric cancer

Variables	CT + TT, CC for rs863091		Allelic ORs and 95% CIs for rs863091	
	CT + TT, n	CC, n	Adjusted OR (95% CI) ^a	P-value
Tumor differentiation				
Well	7	27	1	
Moderate	24	98	0.91 (0.33–2.54)	0.857
Poor	108	338	1.21 (0.51–2.89)	0.661
Depth of tumor infiltration				
T1	17	73	1	
T2	21	47	1.85 (0.85–4.00)	0.119
T3	52	218	1.05 (0.57–1.94)	0.881
T4	49	125	1.64 (0.87–3.10)	0.128
Lymph node metastasis				
Negative	44	152	1	
Positive	95	311	1.07 (0.71–1.62)	0.738
Localization				
Cardia	56	209	1	
Noncardia	83	254	1.30 (0.88–1.93)	0.188

Note: ^aAdjusted for age, sex, smoking status, residence, hypertension, and diabetes.
Abbreviations: CI, confidence interval; *DACT1*, disheveled-binding antagonist of beta-catenin 1; OR, odds ratio.

related to a weaker immune system in older individuals¹⁷ and accumulated exposure to environmental carcinogens, but further research is necessary to clarify the mechanism underlying the association between *DACT1* polymorphisms and age. de Martel et al¹⁸ has reported that males are more likely to suffer from GC compared with females by a ratio of about 2:1, and male cardia cancer rates were two to three

Table 8 Associations between *DACT1* rs17832998 genotypes and clinicopathologic characteristics of gastric cancer

Variables	CT + TT, CC for rs17832998		Allelic ORs and 95% CIs for rs17832998	
	CT + TT, n	CC, n	Adjusted OR (95% CI) ^a	P-value
Tumor differentiation				
Well	12	22	1	
Moderate	39	83	0.71 (0.29–1.75)	0.458
Poor	186	260	1.43 (0.68–3.01)	0.341
Depth of tumor infiltration				
T1	31	59	1	
T2	30	38	1.39 (0.70–2.73)	0.347
T3	105	165	1.28 (0.76–2.13)	0.352
T4	71	103	1.36 (0.77–2.39)	0.286
Lymph node metastasis				
Negative	74	122	1	
Positive	163	243	1.12 (0.79–1.60)	0.532
Localization				
Cardia	106	159	1	
Noncardia	131	206	0.97 (0.69–1.35)	0.840

Note: ^aAdjusted for age, sex, smoking status, residence, hypertension, and diabetes.
Abbreviations: CI, confidence interval; *DACT1*, disheveled-binding antagonist of beta-catenin 1; OR, odds ratio.

Table 9 Associations between *DACT1* rs167481 genotypes and clinicopathologic characteristics of gastric cancer

Variables	CT + TT, CC for rs167481		Allelic ORs and 95% CIs for rs167481	
	CT + TT, n	CC, n	Adjusted OR (95% CI) ^a	P-value
Tumor differentiation				
Well	22	12	1	
Moderate	91	31	2.08 (0.86–5.06)	0.105
Poor	328	118	1.43 (0.68–3.00)	0.345
Depth of tumor infiltration				
T1	67	23	1	
T2	49	19	1.00 (0.48–2.11)	0.994
T3	206	64	1.10 (0.63–1.92)	0.742
T4	119	55	0.79 (0.44–1.41)	0.426
Lymph node metastasis				
Negative	139	57	1	
Positive	302	104	1.18 (0.81–1.73)	0.369
Localization				
Cardia	202	63	1	
Noncardia	239	98	0.75 (0.52–1.09)	0.130

Note: ^aAdjusted for age, sex, smoking status, residence, hypertension, and diabetes.
Abbreviations: CI, confidence interval; *DACT1*, disheveled-binding antagonist of beta-catenin 1; OR, odds ratio.

times greater than those in women in a Chinese population. We did not find significant association of polymorphism with the GC susceptibility in terms of smoking status. Tobacco smoke is a confirmed independent risk factor for GC,¹⁹ so the only exception in the characteristics analysis was that smoking was more frequently distributed in GC patients than controls. Whether the association between polymorphisms and GC risk may be masked by the overwhelming effect of accumulated exposure to tobacco carcinogens in smokers needs further research. Our data indicate that *DACT1* polymorphisms may have an important effect on men with GC. However, further studies are needed to confirm these results.

Human *DACT1* gene was located within human genome draft sequence NT_025892.9 (nucleotide position 39378960–39387891 in the forward orientation). Previous studies demonstrated that *DACT1*, a member of DACT family, plays pivotal roles in the regulation of embryogenesis and cancer development. *DACT1* has been considered as a regulator of Wnt signaling through its interplay with Dvl, an important mediator of both the noncanonical and the canonical Wnt pathways. *DACT1* antagonizes Wnt signaling by inducing disheveled (Dvl) degradation via a lysosome inhibitor-sensitive and proteasome inhibitor-insensitive mechanism.^{8,16,20} *DACT1* also functions as a tumor suppressor through antagonizing the Wnt/b-catenin signaling pathway in breast cancer, hepatocellular cancer, and non-small-cell lung cancer.^{13–15}

In addition, as a cytoplasmic protein, *DACT1* interacts and posttranslationally regulates central PCP components Dvl2 and Vangl2 and regulates PCP downstream of the Rac1/JNK cascade. Loss of *Dact1* leads to posterior malformations in mice.^{9–11,20} Wang et al¹² reported that *DACT1* suppresses tumorigenesis in GC through inhibiting NF- κ B signaling pathway, and its promoter methylation is significantly associated with tumor aggressiveness. Previously, another study has reported that the methylated CpG site count of *DACT1* promoter may predict the clinical prognosis of GC.²¹ However, there is no report about the association between *DACT1* genetic variation and risk of cancer in the Chinese Han population.

In this study, *DACT1* rs863091 was associated with a significantly decreased GC risk in the Chinese Han population. Moreover, mutational genotypes of *DACT1* rs863091 tend to be upregulated in GC tissues, suggesting a genotype-specific effect of this exon SNP on *DACT1*, thus supporting a protective role for the susceptibility to GC. The C/T polymorphism rs863091 is located in exon 4 of *DACT1* gene, and the polymorphism is synonymous. Increasing evidence shows that synonymous polymorphisms have a significant impact on the efficiency of protein translation, the translated protein levels, as well as affecting splicing processes, stability of mRNA, microRNA binding, and nucleosome formation.^{22,23} Synonymous mutations can also influence the accuracy or speed of translation mainly because of the sufficient corresponding transfer RNAs.^{24–30} Moreover, changing of translation rate can impact protein function via folding,³¹ as in most cases folding is executed during translation.³² The *DACT1* rs863091 mutation may lead to alterations in *DACT1* structure through changing the translational efficiency, which may regulate the *DACT1* function finally. A preceding study pointed out that the effect of *DACT1* on GC was associated with promoter methylation of *DACT1*.^{12,21} Hence, we speculate that alterations in *DACT1* function may affect *DACT1* promoter methylation and may influence the interaction of *DACT1* and Dvl2. Nevertheless, in normal tissues, *DACT1* mRNA expression levels in samples with variant genotypes have no significant differences with wild genotype. The primary explanation for the differential findings between normal and cancer tissues might be the relatively small numbers of samples. The differential observations might also be because *DACT1* is a hinge of the complex network of proteins.^{9–11,20} Furthermore, the expression of *DACT1* may alter according to other tumor-related genes or due to differences in downstream targets of the enzyme.¹² Therefore, we speculate that there are some mechanisms working

as triggering information exists in tumor tissues but not in normal tissues. However, these hypotheses should be confirmed by our further studies.

There are several limitations in the study that should be considered. First, because it was a hospital-based case-control study, selection bias could not be avoided. Nonetheless, the genotype distribution of the controls in our study met the Hardy–Weinberg conditions. Second, the relatively small sample size may have led to limit statistical power to detect a slight effect and may have underpowered gene–environment interactions in the stratified analyses. Third, we acquired personal information of subjects such as smoking history by questionnaire. Therefore, the inherent selection bias and information bias were unavoidable, which may have led to insufficient statistical power in stratified analysis of smoking status. Fourth, partial missing clinical information on the subjects, such as data on alcohol consumption, histological types, and The Cancer Genome Atlas classifications, prevented further analysis. Moreover, *Helicobacter pylori* infection is one of independent risk factors of GC. We did not have enough information on *H. pylori* status because it was unethical to perform *H. pylori* tests for every subject, especially for controls. Finally, the study was conducted in the Chinese Han population. Data should be extrapolated to other ethnic groups cautiously.

Conclusion

Our study for the first time demonstrates that the CT/TT genotype of *DACT1* rs863091 polymorphism is significantly associated with a decreased risk of GC in the Chinese Han population, especially in younger individuals and males. The T allele may be a protective factor against GC.

Acknowledgments

This work was supported by the Natural Science Foundation of Jiangsu Province, the Medical ZhongDianRenCai Project of Jiangsu Province (grant number RC2011059), Six RenCai Gaofeng, 333 Project, and the Priority Academic Program Development of Jiangsu Higher Education Institutions (PAPD) (grant number JX10231801).

Disclosure

The authors report no conflicts of interest in this work.

References

1. Torre LA, Bray F, Siegel RL, Ferlay J, Lortet-Tieulent J, Jemal A. Global cancer statistics, 2012. *CA Cancer J Clin.* 2015;65(2):87–108.
2. Jemal A, Bray F, Center MM, Ferlay J, Ward E, Forman D. Global cancer statistics. *CA Cancer J Clin.* 2011;61(2):69–90.

3. Resende C, Ristimaki A, Machado JC. Genetic and epigenetic alteration in gastric carcinogenesis. *Helicobacter*. 2010;15(suppl 1):34–39.
4. Yang C, Tang R, Ma X, et al. Tag SNPs in long non-coding RNA H19 contribute to susceptibility to gastric cancer in the Chinese Han population. *Oncotarget*. 2015;6(17):15311–15320.
5. Yang C, Ma X, Liu D, et al. Promoter polymorphisms of miR-34b/c are associated with risk of gastric cancer in a Chinese population. *Tumour Biol*. 2014;35(12):12545–12554.
6. Yang L, Liu D, Liang S, et al. Janus kinase 2 polymorphisms are associated with risk in patients with gastric cancer in a Chinese population. *PLoS One*. 2013;8(5):e64628.
7. Gu H, Yang L, Sun Q, et al. Gly82Ser polymorphism of the receptor for advanced glycation end products is associated with an increased risk of gastric cancer in a Chinese population. *Clin Cancer Res*. 2008;14(11):3627–3632.
8. Zhang L, Gao X, Wen J, Ning Y, Chen YG. Dapper 1 antagonizes Wnt signaling by promoting dishevelled degradation. *J Biol Chem*. 2006;281(13):8607–8612.
9. Wen J, Chiang YJ, Gao C, et al. Loss of Dact1 disrupts planar cell polarity signaling by altering dishevelled activity and leads to posterior malformation in mice. *J Biol Chem*. 2010;285(14):11023–11030.
10. Suriben R, Kivimae S, Fisher DA, Moon RT, Cheyette BN. Posterior malformations in Dact1 mutant mice arise through misregulated Vangl2 at the primitive streak. *Nat Genet*. 2009;41(9):977–985.
11. Wang Y. Wnt/Planar cell polarity signaling: a new paradigm for cancer therapy. *Mol Cancer Ther*. 2009;8(8):2103–2109.
12. Wang S, Kang W, Go MY, et al. Dapper homolog 1 is a novel tumor suppressor in gastric cancer through inhibiting the nuclear factor-kappaB signaling pathway. *Mol Med*. 2012;18:1402–1411.
13. Yin X, Xiang T, Li L, et al. DACT1, an antagonist to Wnt/beta-catenin signaling, suppresses tumor cell growth and is frequently silenced in breast cancer. *Breast Cancer Res*. 2013;15(2):R23.
14. Yau TO, Chan CY, Chan KL, et al. HDPR1, a novel inhibitor of the WNT/beta-catenin signaling, is frequently downregulated in hepatocellular carcinoma: involvement of methylation-mediated gene silencing. *Oncogene*. 2005;24(9):1607–1614.
15. Yang ZQ, Zhao Y, Liu Y, et al. Downregulation of HDPR1 is associated with poor prognosis and affects expression levels of p120-catenin and beta-catenin in nonsmall cell lung cancer. *Mol Carcinog*. 2010;49(5):508–519.
16. Yuan G, Wang C, Ma C, et al. Oncogenic function of DACT1 in colon cancer through the regulation of beta-catenin. *PLoS One*. 2012;7(3):e34004.
17. Zhu H, Yang L, Zhou B, Yu R, Tang N, Wang B. Myeloperoxidase G-463A polymorphism and the risk of gastric cancer: a case-control study. *Carcinogenesis*. 2006;27(12):2491–2496.
18. de Martel C, Forman D, Plummer M. Gastric cancer: epidemiology and risk factors. *Gastroenterol Clin North Am*. 2013;42(2):219–240.
19. Parkin DM. International variation. *Oncogene*. 2004;23(38):6329–6340.
20. Katoh M, Katoh M. Identification and characterization of human DAPPER1 and DAPPER2 genes in silico. *Int J Oncol*. 2003;22(4):907–913.
21. Deng J, Liang H, Zhang R, et al. Methylated CpG site count of dapper homolog 1 (*DACT1*) promoter prediction the poor survival of gastric cancer. *Am J Cancer Res*. 2014;4(5):518–527.
22. Waldman YY, Tuller T, Keinan A, Ruppin E. Selection for translation efficiency on synonymous polymorphisms in recent human evolution. *Genome Biol Evol*. 2011;3:749–761.
23. Chamary JV, Parmley JL, Hurst LD. Hearing silence: non-neutral evolution at synonymous sites in mammals. *Nat Rev Genet*. 2006;7(2):98–108.
24. Bulmer M. The selection-mutation-drift theory of synonymous codon usage. *Genetics*. 1991;129(3):897–907.
25. Gustafsson C, Govindarajan S, Minshull J. Codon bias and heterologous protein expression. *Trends Biotechnol*. 2004;22(7):346–353.
26. Kramer EB, Farabaugh PJ. The frequency of translational misreading errors in *E. coli* is largely determined by tRNA competition. *RNA*. 2007;13(1):87–96.
27. Stoletzki N, Eyre-Walker A. Synonymous codon usage in *Escherichia coli*: selection for translational accuracy. *Mol Biol Evol*. 2007;24(2):374–381.
28. Hershberg R, Petrov DA. Selection on codon bias. *Annu Rev Genet*. 2008;42:287–299.
29. Gingold H, Pilpel Y. Determinants of translation efficiency and accuracy. *Mol Syst Biol*. 2011;7:481.
30. Plotkin JB, Kudla G. Synonymous but not the same: the causes and consequences of codon bias. *Nat Rev Genet*. 2011;12(1):32–42.
31. Kimchi-Sarfaty C, Oh JM, Kim IW, et al. A “silent” polymorphism in the MDR1 gene changes substrate specificity. *Science*. 2007;315(5811):525–528.
32. Komar AA. A pause for thought along the co-translational folding pathway. *Trends Biochem Sci*. 2009;34(1):16–24.

OncoTargets and Therapy

Publish your work in this journal

OncoTargets and Therapy is an international, peer-reviewed, open access journal focusing on the pathological basis of all cancers, potential targets for therapy and treatment protocols employed to improve the management of cancer patients. The journal also focuses on the impact of management programs and new therapeutic agents and protocols on

Submit your manuscript here: <http://www.dovepress.com/oncotargets-and-therapy-journal>

patient perspectives such as quality of life, adherence and satisfaction. The manuscript management system is completely online and includes a very quick and fair peer-review system, which is all easy to use. Visit <http://www.dovepress.com/testimonials.php> to read real quotes from published authors.

Dovepress