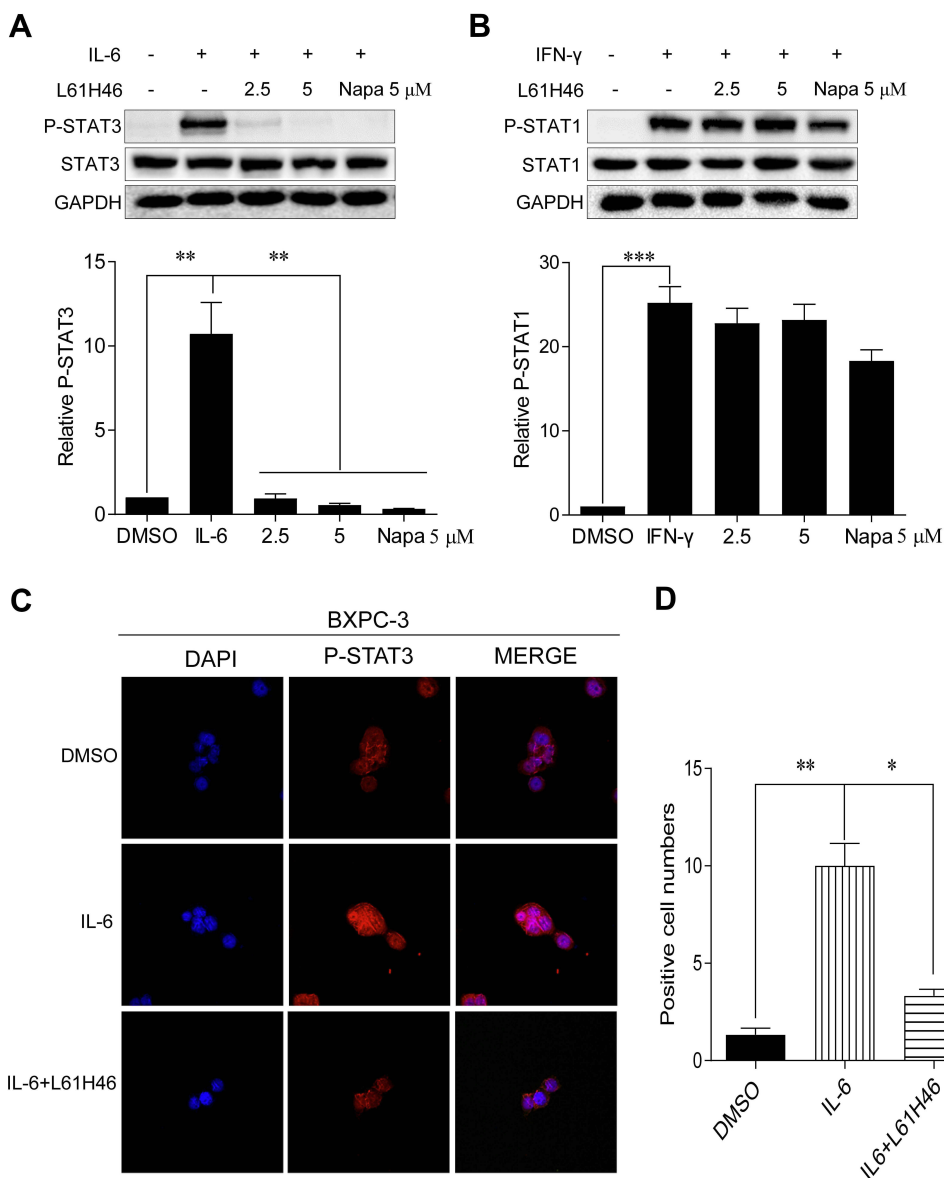


L61H46 Shows Potent Efficacy Against Human Pancreatic Cancer Through Inhibiting STAT3 Pathway [Erratum]

Bai E, Yang L, Xiang Y, et al. *Cancer Manag Res.* 2018;10:565–581.

The original images provided by the authors were not spliced and the correct figure is shown below. The corrections do not impact the findings of the study.

During the publication process there was an operator error that resulted in the Western blot images of Figures 5A and 5B on page 575 appearing spliced.



Cancer Management and Research downloaded from <https://www.dovepress.com/> For personal use only.

Cancer Management and Research

Dovepress

Publish your work in this journal

Cancer Management and Research is an international, peer-reviewed open access journal focusing on cancer research and the optimal use of preventative and integrated treatment interventions to achieve improved outcomes, enhanced survival and quality of life for the cancer patient.

The manuscript management system is completely online and includes a very quick and fair peer-review system, which is all easy to use. Visit <http://www.dovepress.com/testimonials.php> to read real quotes from published authors.

Submit your manuscript here: <https://www.dovepress.com/cancer-management-and-research-journal>