

Associations of GWAS-Supported Non-MHC Genes with Autoimmune Thyroiditis in Patients with Type 1 Diabetes

Jialin Liang¹
Ganxiong Liang¹ 
Zhonghua Liu²
Huan Cai²

¹Department of Endocrinology and Metabolism, Zhongshan People's Hospital, Zhongshan, 528403, Guangdong, People's Republic of China;

²Department of Rehabilitation, Zhongshan People's Hospital, Zhongshan, 528403, Guangdong, People's Republic of China

Purpose: A genome-wide association study (GWAS) in Caucasian population identified five non-MHC genes (*PHTF1*, *PTPN22*, *MAGI3*, *BCL2L15*, and *QRFPR*) associated with risk of the co-occurrence of autoimmune thyroid diseases (AITD) and type 1 diabetes (T1D). The aim of this study is to replicate these associations with AITD in patients with T1D in Chinese Han population.

Patients and Methods: A case-control study was designed. Five single-nucleotide polymorphisms (SNPs) *PHTF1* rs1111695, *PTPN22* rs1217407, *MAGI3* rs2153977, *BCL2L15* rs2358994, and *QRFPR* rs7679475 were genotyped in 489 patients with T1D. Associations between genotypes and AITD risk were analyzed with logistic regression model.

Results: AITD occurred in 159 (32.5%) patients. When adjusting multiple factors by logistic regression, *QRFPR* rs7679475 was significantly associated with an increased risk of AITD in T1D patients in codominant model (G/G vs A/A, OR 2.93; 95% CI 1.44–5.96; $P = 0.003$), dominant model (G/A-G/G vs A/A, OR 1.81; 95% CI 1.17–2.79; $P = 0.007$) and recessive model (G/G vs A/A-G/A, OR 2.28; 95% CI 1.17–4.43; $P = 0.015$). Furthermore, we found a significant interaction between rs7679475 and female ($P_{interaction} = 0.005$). In silico analysis indicated that rs7679475 is located in histone modification marked region and can change the binding of regulatory motifs.

Conclusion: Our results suggested that *QRFPR* rs7679475 may influence the risk of AITD in patients with T1D in Chinese Han population, and this effect may be modulated by sex.

Keywords: autoimmune thyroid diseases, type 1 diabetes, single-nucleotide polymorphism, *QRFPR* gene

Introduction

Type 1 diabetes (T1D) is characterized by a severe autoimmune pancreatic β -cell destruction, usually leading to absolute insulin deficiency.¹ In clinical practice, this disorder is closely associated with autoimmune thyroid diseases (AITD), another organ-specific T-cell mediated disease. Epidemiological data have shown that T1D and AITD frequently coexist in the same individual, who is also classified as a variant of autoimmune polyglandular syndrome type 3 (APS3v).² A higher prevalence of AITD has been reported in T1D compared with those without T1D. In different studies, AITD occurs in 17% to 35% of T1D patients.^{2–7} A more recent study declared that lifetime risk of AITD in longstanding T1D is about 41% and is greater in females.⁸

The underlying mechanisms for the concurrent development of AITD in T1D patients are still unclear. A possible explanation lies in the common genetic

Correspondence: Ganxiong Liang
Department of Endocrinology and Metabolism, Zhongshan People's Hospital, 2 East Sunwen Road, Zhongshan, 528403, Guangdong, People's Republic of China
Tel +86-13392926029
Email ganxiong_liang@126.com

Huan Cai
Department of Rehabilitation, Zhongshan People's Hospital, 2 East Sunwen Road, Zhongshan, 528403, Guangdong, People's Republic of China
Tel +86-18718750210
Email ch.neurol@gmail.com

background in conjunction with environmental factors.⁹ In the past years, a genome-wide association study (GWAS) in Caucasian population identified multiple signals with the HLA region, as well as 5 non-MHC genes (*PHTF1*, *PTPN22*, *MAGI3*, *BCL2L15*, and *QRFPR*) associated with the joint risk for AITD and T1D. Notably, the novel *QRFPR* gene was unique to the APS3v phenotype that had not been suggested by previous studies of T1D or AITD.¹⁰ However, the allele frequency distribution of variant in *QRFPR* was quite different from different populations. According to the 1000 Genomes Browser (<http://www.ncbi.nlm.nih.gov/variation/tools/1000genomes/>), unlike Europeans with minor allele “A”, East Asians have a lower allele frequency of allele “G”. Because of possible genetic heterogeneity among different ethnic groups, it is essential to replicate this association in Chinese population.

Moreover, female is an independent risk factor for a large number of autoimmune diseases. It has been reported that interactive effects of sex and gene determinants may synergistically influence the risk of autoimmune diseases.^{11–14} Here, we examined the potential associations between polymorphisms in GWAS-supported non-MHC genes and risk of AITD in patients with T1D in Chinese Han population. The interactive effects of genotypes and sex were also analyzed.

Materials and Methods

Study Subjects and Data Collection

A case–control study was designed. We consecutively recruited unrelated Chinese Han patients with diagnosed T1D from the Department of Endocrinology and Metabolism in Zhongshan People’s Hospital between October 2017 and March 2020. T1D was diagnosed based on the American Diabetes Association criteria.¹ Those diagnosed with T1D over the age of 30 were defined as late-onset T1D. Of all T1D patients without known thyroid disorder were screened for AITD. AITD was defined as the presence of elevated thyroid antiperoxidase antibody (TPOAb) and/or antithyroglobulin antibody (TgAb) values and of the typical pattern of the thyroid ultrasound.¹⁵ All of the subjects with AITD were newly diagnosed and previously untreated. Participants were then divided into two groups: cases were defined as T1D patients with AITD and controls were defined as T1D patients without AITD.

Trained physicians collected clinical and biochemical characteristics. Blood samples were taken after 12h

overnight fasting for laboratory investigations. Fasting blood glucose, fasting C-peptide, glycosylated hemoglobin, glutamic acid decarboxylase autoantibody (GADA), lipid concentrations, and creatinine were monitored.

This study was approved by the Ethical Review Board of Zhongshan People’s Hospital, Zhongshan, China (Approval number K2017-06). The study was performed in accordance with the ethical standards laid down in the 1964 Declaration of Helsinki. Participants ≥ 18 years old or a parent/guardian of participants < 18 years old provided written informed consent.

Genotyping

Variants were selected based on a GWAS for co-occurrence of T1D and AITD in Caucasians.¹⁰ The GWAS associated 5 non-MHC genes (*PHTF1*, *PTPN22*, *MAGI3*, *BCL2L15*, and *QRFPR*) with co-occurrence of T1D and AITD. Among them, rs2476601 in *PTPN22*, which reached genome wide significance ($P < 5 \times 10^{-8}$) in Caucasians, showed no polymorphism in Chinese population. Therefore, we instead included rs1217407 in *PTPN22* that close to the genome-wide significance ($P = 1.87 \times 10^{-6}$). As a result, a total of 5 single-nucleotide polymorphisms (SNPs), 4 located on chromosome 1p13 (*PHTF1* rs1111695, *PTPN22* rs1217407, *MAGI3* rs2153977, and *BCL2L15* rs2358994) and 1 located on chromosome 4q27 (*QRFPR* rs7679475), were included in this study. [Supplementary Table 1](#) shows details of the selected SNPs.

Genotyping was conducted by Improved Multiple Ligase Detection Reaction (iMLDR)¹⁶ according to the standard procedures, with technical assistance from Center for Genetic and Genomic Analysis, Genesky Biotechnologies Inc. (Shanghai, China). Genotyping was successfully performed in all samples. For quality control, 5% of the samples were randomly selected for reproducibility assessments and the results were 100% concordant.

Statistical Analyses

Departures from Hardy–Weinberg equilibrium were tested using chi-square tests. Categorical variables were presented as count (percentage) and continuous variables as median (interquartile range). Chi-square tests or Fisher’s exact was conducted for categorical data as appropriate, while Mann–Whitney *U*-tests for continuous variables. Univariate and multivariate logistic regression were performed to investigate the association of each individual polymorphism with risk of AITD

in T1D patients. Variables with a marginal significant difference ($P < 0.1$) in baseline comparison or with an important biological association (age, sex, and BMI) were included as covariates in the multivariate model. Sex-genotype interaction, linkage disequilibrium (LD) analysis, and haplotype analysis were analyzed by the SNPstats web tool.¹⁷ Haplotypes with frequencies <0.01 were excluded. Multiple testing corrections were carried out with the Bonferroni method. A P value <0.01 ($0.05/5$ for five SNPs) was considered as statistically significant. Statistical analysis was performed by R version 3.5.3.

In silico Analysis

To provide function annotation for *QRFPR* polymorphism rs7679475, we performed in silico analysis using Haploreg v4.1¹⁸ (<https://pubs.broadinstitute.org/mammals/haploreg/haploreg.php>) and UCSC Genome Browser (<http://genome.ucsc.edu/>).

Results

Baseline Characteristics

In total, 489 T1D patients were enrolled in the study, in which 159 (32.5%) patients with AITD. The baseline characteristics of the study population are summarized in Table 1. Patients with AITD were older ($P = 0.004$) and had a higher percentage of females (71.7% vs 59.4%, $P = 0.011$), higher proportion of late-onset T1D (52.8% vs 42.4%, $P = 0.031$), higher fasting C-peptide level ($P = 0.010$), higher positivity to GADA (65.4% vs 46.4%, $P < 0.001$), lower low-density lipoprotein (LDL-C) level ($P = 0.011$), and higher high-density lipoprotein (HDL-C) level ($P < 0.001$) compared with patients without AITD. No statistically significant difference in other factors between the two groups was observed.

Genotype and Allele Distribution

Genotype distributions were not deviated from Hardy-Weinberg equilibrium for all SNPs (Supplementary

Table 1 Baseline Characteristic of Total Population, T1D Patients with AITD (Cases), and T1D Patients without AITD (Controls)

Characteristic	Total (n = 489)	Cases with AITD (n = 159)	Controls (n = 330)	P ^a
Female, n (%)	310 (63.4)	114 (71.7)	196 (59.4)	0.011
Age, years	36.0 (24.0–53.0)	39.0 (27.0–58.0)	35.5 (22.0–50.0)	0.004
T1D duration, years	5.0 (1.6–12.0)	6.0 (1.6–10.5)	5.0 (2.0–12.0)	0.658
Late-onset T1D, n (%)	224 (45.8)	84 (52.8)	140 (42.4)	0.031
BMI, kg/m ²	20.69 (18.79–22.89)	20.55 (18.93–21.64)	20.94 (18.67–23.11)	0.098
Systolic blood pressure, mmHg	113 (104–125)	114 (103–127)	113 (104–125)	0.455
Diastolic blood pressure, mmHg	72 (64–79)	72 (64–79)	71 (63–78)	0.916
Fasting blood glucose, mmol/L	10.30 (6.79–14.17)	10.10 (6.46–14.24)	10.30 (6.81–13.97)	0.858
Fasting C-peptide, ng/mL	0.04 (0.00–0.29)	0.10 (0.00–0.31)	0.02 (0.00–0.27)	0.010
HbA1c, % (mmol/mol)	8.1 (6.9–10.2)	8.0 (6.8–10.6)	8.2 (7.1–10.0)	0.427
	65 (52–88)	64 (51–92)	66 (54–86)	
GADA positive, n (%)	257 (52.6)	104 (65.4)	153 (46.4)	< 0.001
LDL-C, mmol/L	2.72 (2.21–3.30)	2.63 (2.13–3.09)	2.77 (2.26–3.37)	0.011
HDL-C, mmol/L	1.29 (1.20–1.40)	1.37 (1.26–1.50)	1.26 (1.17–1.36)	< 0.001
Triglyceride, mmol/L	0.79 (0.61–1.16)	0.80 (0.58–1.13)	0.77 (0.61–1.17)	0.715
Creatinine, μmol/L	59.0 (50.0–70.0)	59.0 (53.0–70.5)	59.0 (48.0–68.0)	0.131

Note: ^aP value for comparing T1D with AITD vs T1D without AITD.

Abbreviations: T1D, type 1 diabetes; AITD, autoimmune thyroid diseases; BMI, body mass index; HbA1c, glycated hemoglobin; GADA, glutamic acid decarboxylase autoantibody; LDL-C, low-density lipoprotein; HDL-C, high-density lipoprotein.

Table 1). Genotype frequencies of the five investigated variants in T1D cases with AITD and T1D controls without AITD are shown in **Table 2**. *QRFPR* rs7679475G allele frequency was 39.3% in cases with AITD and 30.2% in controls ($P = 0.004$). The distribution of genotype of rs7679475 differed significantly between case and control groups (A/A, G/A, and G/G were 37.1%, 47.2%, and 15.7%, respectively, in cases vs 46.7%, 46.4%, and 7.0%, respectively, in controls; $P = 0.005$). Univariate logistic regression suggested that G/G genotype of rs7679475 conferred risk for AITD in T1D individuals (codominant model: OR 2.84; 95% CI 1.49–5.39; $P = 0.001$; recessive model: OR 2.49; 95% CI 1.36–4.54; $P = 0.003$). Upon adjusted for age, sex, and BMI, the results were remained significant. Moreover, after further adjustment for variables with a marginal significant difference ($P < 0.1$) in baseline comparison (late-onset T1D, fasting C-peptide, positivity to GADA, LDL-C, and HDL-C), rs7679475G was still associated with AITD in patients with T1D in codominant model (G/G vs A/A, OR 2.93; 95% CI 1.44–5.96; $P = 0.003$) and dominant model (G/A-G/G vs A/A, OR 1.81; 95% CI 1.17–2.79; $P = 0.007$). In recessive model, though not reaching the Bonferroni-corrected threshold, there was a suggestive association between rs7679475 and AITD in T1D patients (G/G vs A/A-G/A, OR 2.28; 95% CI 1.17–4.43; $P = 0.015$).

However, none of the other SNPs (rs1111695, rs1217407, rs2153977, and rs2358994) was significantly associated with the presence of AITD in T1D patients, and multivariate adjustment did not change these results.

Sex Interaction Analysis

Since female is widely acknowledged to be a risk factor for a large amount of autoimmune diseases, we performed an interaction analysis between rs7679475 variant and sex. **Figure 1** shows the effect of rs7679475 on the risk of AITD in T1D individuals stratified by sex after adjusting for multiple confounders. Compared with rs7679475 A/A genotype in men, T1D women with G/A had a 5.11-fold (95% CI 2.23–11.71) increased risk of AITD, while males with G/G had an OR of 6.43 (95% CI 1.79–23.12). The highest risk of AITD in T1D patients was found in females with G/G genotype (OR 11.63; 95% CI 3.94–34.34). Moreover, interaction between rs7679475 and sex was significant ($P_{interaction} = 0.005$).

Haplotype Analysis

Four of the five target SNPs are located in chromosome 1p13 locus. LD analysis showed that *MAGI3* rs2153977, *PHTF1* rs1111695, and *PTPN22* rs1217407 were in an LD block (**Supplementary Figure 1**). In haplotype analysis, after adjusting for potential confounders, no significant association between any haplotype and the risk of AITD in patients with T1D (**Supplementary Table 2**) was observed ($P > 0.05$).

Functional Annotation

We carried out in silico analysis to evaluate the potential function of the significant *QRFPR* polymorphism. Rs7679475 is located in the 11859bp upstream of *QRFPR* and in H3K27ac histone modification marked region, a marker of enhancer/promoter-associated regulatory element (**Figure 2**). Further bioinformatics analysis by HaploReg v4.1 indicated that rs7679475 could change the binding affinity of regulatory motifs Brachyury_2, PPAR_1, and SIX5_known1 (**Table 3**).

Discussion

In the current study, we comprehensively evaluated the associations of five GWAS-supported non-MHC genes polymorphisms and AITD in patients with T1D in a Chinese Han population. The main finding was that *QRFPR* rs7679475G was associated with an increased risk of AITD in T1D individuals. Moreover, we observed significant interaction between *QRFPR* genotype and sex.

Thyroid dysfunction and diabetes mellitus, two closely associated disorders, share common underlying pathophysiological mechanisms.¹⁹ Shared genetic susceptibility might contribute to the co-occurrence of AITD and T1D. In 2015, a GWAS in Caucasian reported that 5 non-MHC genes were associated with the co-occurrence of AITD and T1D at approximate genome-wide significance.¹⁰ A subsequent replicate study in a Japanese population only found a significant association between rs7679475 and Hashimoto's thyroiditis.²⁰ Concordantly, our study demonstrated that rs7679475 was an independent risk factor for AITD in those diagnosed T1D in Chinese population, but did not show significant association with other SNPs that identified by the Caucasian GWAS. The inconsistency may be partly explained by genetic heterogeneity in different ethnic origins and regions. According to the 1000 Genomes Browser, the allele frequencies of rs7679475 are quite different between Chinese and European (CHS:

Table 2 Genotype and Allele Frequencies of the Five Selected SNPs in T1D Patients with and without AITD

Genetic Models	Cases with AITD	Controls	Model 1 ^a OR (95% CI)/ P	Model 2 ^b OR (95% CI)/ P	Model 3 ^c OR (95% CI)/ P
<i>QRFR (rs7679475)</i>					
Codominant					
A/A	59 (37.1%)	154 (46.7%)	I	I	I
G/A	75 (47.2%)	153 (46.4%)	1.28 (0.85–1.92)/ 0.236	1.45 (0.95–2.22)/ 0.085	1.60 (1.01–2.53)/ 0.044
G/G	25 (15.7%)	23 (7.0%)	2.84 (1.49–5.39)/ 0.001	3.41 (1.75–6.64)/ < 0.001	2.93 (1.44–5.96)/ 0.003
Dominant					
A/A	59 (37.1%)	154 (46.7%)	I	I	I
G/A-G/G	100 (62.9%)	176 (53.3%)	1.48 (1.01–2.19)/ 0.045	1.70 (1.13–2.54)/ 0.010	1.81 (1.17–2.79)/ 0.007
Recessive					
A/A-G/A	134 (84.3%)	307 (93.0%)	I	I	I
G/G	25 (15.7%)	23 (7.0%)	2.49 (1.36–4.54)/ 0.003	2.78 (1.50–5.18)/ 0.001	2.28 (1.17–4.43)/ 0.015
<i>PHTF1 (rs1111695)</i>					
Codominant					
C/C	112 (70.4%)	224 (67.9%)	I	I	I
C/A	44 (27.7%)	93 (28.2%)	0.95 (0.62–1.45)/ 0.799	0.98 (0.63–1.52)/ 0.937	0.85 (0.53–1.36)/ 0.489
A/A	3 (1.9%)	13 (3.9%)	0.46 (0.13–1.65)/ 0.235	0.42 (0.12–1.56)/ 0.195	0.35 (0.08–1.59)/ 0.173
Dominant					
C/C	112 (70.4%)	224 (67.9%)	I	I	I
C/A-A/A	47 (29.6%)	106 (32.1%)	0.89 (0.59–1.34)/ 0.566	0.91 (0.59–1.39)/ 0.654	0.79 (0.50–1.25)/ 0.322
Recessive					
C/C-C/A	156 (98.1%)	317 (96.1%)	I	I	I
A/A	3 (1.9%)	13 (3.9%)	0.47 (0.13–1.67)/ 0.210	0.43 (0.12–1.55)/ 0.165	0.37 (0.08–1.65)/ 0.161
<i>PTPN22 (rs1217407)</i>					

(Continued)

Table 2 (Continued).

Genetic Models	Cases with AITD	Controls	Model 1 ^a OR (95% CI)/ P	Model 2 ^b OR (95% CI)/ P	Model 3 ^c OR (95% CI)/ P
Codominant					
A/A	44 (27.7%)	109 (33.0%)	I	I	I
G/A	91 (57.2%)	162 (49.1%)	1.39 (0.90–2.15)/ 0.136	1.24 (0.79–1.94)/ 0.347	1.30 (0.81–2.09)/ 0.281
G/G	24 (15.1%)	59 (17.9%)	1.01 (0.56–1.82)/ 0.980	0.94 (0.52–1.72)/ 0.849	0.70 (0.36–1.38)/ 0.301
Dominant					
A/A	44 (27.7%)	109 (33.0%)	I	I	I
G/A-G/G	115 (72.3%)	221 (67.0%)	1.29 (0.85–1.95)/ 0.229	1.16 (0.76–1.78)/ 0.494	1.13 (0.72–1.79)/ 0.593
Recessive					
A/A-G/A	135 (84.9%)	271 (82.1%)	I	I	I
G/G	24 (15.1%)	59 (17.9%)	0.82 (0.49–1.37)/ 0.439	0.82 (0.48–1.40)/ 0.464	0.59 (0.32–1.08)/ 0.082
MAGI3 (rs2153977)					
Codominant					
T/T	55 (34.6%)	131 (39.7%)	I	I	I
C/T	84 (52.8%)	150 (45.5%)	1.33 (0.88–2.02)/ 0.172	1.35 (0.89–2.07)/ 0.161	1.51 (0.95–2.39)/ 0.079
C/C	20 (12.6%)	49 (14.8%)	0.97 (0.53–1.79)/ 0.928	0.98 (0.52–1.82)/ 0.939	0.80 (0.40–1.61)/ 0.526
Dominant					
T/T	55 (34.6%)	131 (39.7%)	I	I	I
C/T-C/C	104 (65.4%)	199 (60.3%)	1.24 (0.84–1.85)/ 0.274	1.26 (0.84–1.89)/ 0.261	1.33 (0.85–2.06)/ 0.211
Recessive					
T/T-C/T	139 (87.4%)	281 (85.2%)	I	I	I
C/C	20 (12.6%)	49 (14.8%)	0.83 (0.47–1.44)/ 0.496	0.82 (0.46–1.46)/ 0.497	0.63 (0.33–1.19)/ 0.153

BCL2L15 (rs2358994)						
Codominant						
A/A	51 (32.1%)	119 (36.1%)	1	1	1	1
G/A	85 (53.5%)	159 (48.2%)	1.25 (0.82-1.90)/ 0.303	1.31 (0.85-2.02)/ 0.225	1.35 (0.85-2.14)/ 0.203	
G/G	23 (14.5%)	52 (15.8%)	1.03 (0.57-1.86)/ 0.917	1.07 (0.59-1.97)/ 0.819	0.93 (0.47-1.86)/ 0.841	
Dominant						
A/A	51 (32.1%)	119 (36.1%)	1	1	1	1
G/A-G/G	108 (67.9%)	211 (63.9%)	1.19 (0.80-1.78)/ 0.384	1.25 (0.83-1.89)/ 0.289	1.26 (0.80-1.96)/ 0.314	
Recessive						
A/A-G/A	136 (85.5%)	278 (84.2%)	1	1	1	1
G/G	23 (14.5%)	52 (15.8%)	0.90 (0.53-1.54)/ 0.709	0.91 (0.53-1.58)/ 0.747	0.77 (0.42-1.44)/ 0.422	

Notes: ^aModel 1 unadjusted. ^bModel 2 adjusted for age, sex, and BMI. ^cModel 3 adjusted for age, sex, BMI, proportion of late-onset T1D, fasting C-peptide, GADA positivity, LDL-C, and HDL-C.

A = 0.6476, G = 0.3524 and CEU: A = 0.4091, G = 0.5909), suggesting that ethnic differences may exert different influences on the associations observed in our study.

The *QRFPR* gene (also known as *GPR103* gene) encodes a G-protein-coupled receptor that is expressed in brain, urinary bladder, thyroid gland, human pancreatic β -cells, and so on.²¹ Recent data indicate that QRFPR and its ligand QRFP are key regulators of glucose homeostasis²² by increasing insulin sensitivity and insulin secretion,^{23,24} as well as preventing pancreatic β -cells death and apoptosis.²⁵ Besides, a locus on chromosome 4q27 that is approximately 625kb downstream the *QRFPR* gene was reported to be associated with a number of autoimmune diseases.²⁶⁻²⁹ Therefore, it is possible that QRFPR or its signaling pathway may be involved in the development of T1D plus AITD.

According to bioinformatics analysis, rs7679475 is located in the sequence upstream of *QRFPR*. The variant is enriched for enhancer/promoter-related histone marker H3K27ac. It also can change the binding of regulatory motifs (rachyury_2, PPAR_1, and SIX5_known1). All above results provided evidence that the polymorphism might fall within putative functional regulatory regions. Therefore, we hypothesized that the rs7679475G allele is likely to change *QRFPR* expression in thyroid and pancreatic β -cells, influencing immunity and β -cells apoptosis, thus, predisposing AITD and T1D. Future studies are required to confirm the function of the rs7679475 on *QRFPR* expression since we cannot fully exclude the possibility that this SNP is not itself responsible for the observed association, but instead is in LD with a causative SNP.

Female has been reported to be strongly related to a large number of autoimmune diseases.¹¹ Our results demonstrated a clear difference in the magnitude of AITD risk in T1D across rs769475 genotypes according to sex, and revealed a possible gene-sex interaction. But the mechanisms behind this are still unclear. A previous study in female rats supported a role for estradiol in the regulation of hypothalamic prepro-QRFP mRNA expression.³⁰ Nevertheless, to the best of our knowledge, there is no research to date investigating interactions between sex hormones and *QRFPR* or *QRFPR* expression in peripheral organs.

Several limitations should be considered when interpreting our findings. First, our study is hospital-based design, which might induce selection bias. Second, previous studies have reported that the GADA may influence

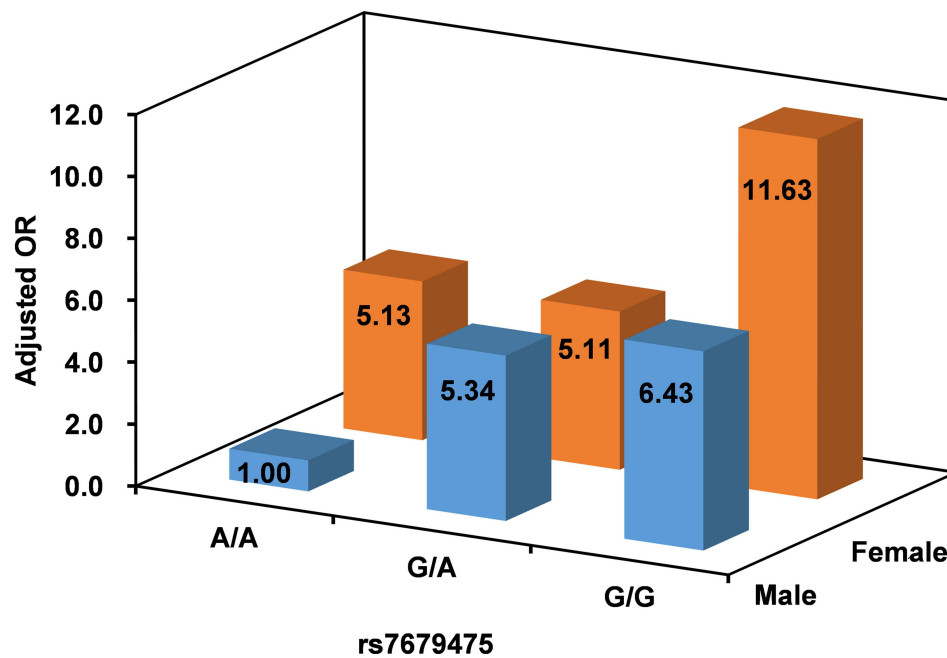


Figure 1 Adjusted odd ratio (OR) of autoimmune thyroid diseases (AITD) in type 1 diabetes (T1D) patients according rs7679475 and sex, male with A/A genotype as a reference (adjusted for age, sex, BMI, proportion of late-onset T1D, fasting C-peptide, glutamic acid decarboxylase autoantibody, low-density lipoprotein, and high-density lipoprotein). The interaction between rs7679475 and sex was significant ($P_{interaction} = 0.005$).

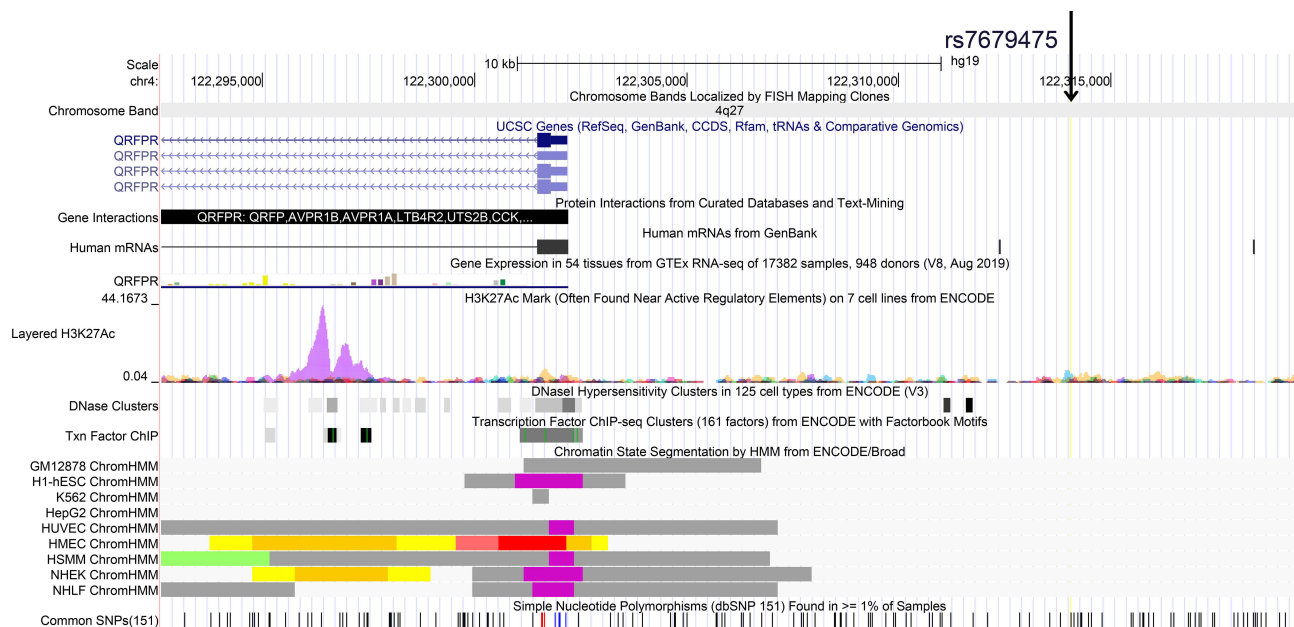


Figure 2 Evidence from UCSC data for regulatory function of rs7679475. The plot is presented on chromosome 4q27 (NCBI GRCh37). Tracks (from top to bottom) in the picture are genome base position, chromosome bands, UCSC genes, protein interactions from curated databases and text-mining, human mRNAs from GenBank, gene expression, H3K27Ac Mark, DNaseI Hypersensitivity Clusters, ENCODE transcription factor ChIP-seq clusters, ENCODE chromatin state segmentation by HMM, and simple nucleotide polymorphisms (dbSNP 151).

the development or progression of AITD,^{31,32} which were consistent with our results. However, adjustment of GADA did not appreciably change the result for rs7679475 and AITD. Still, we lacked other T1D

antibodies for every participant; therefore, we could not determine potential impacts from the existence of other T1D antibodies. Finally, this study was conducted in Chinese Han patients, so our findings may not be

Table 3 Regulatory Motifs Altered for Rs7679475 Based on HaploReg V4.1

PWM ID	PWM match score		A allele: CCATAGACGTAGGGCAAGACTAGGCACTGAGTGTCAAGGAGATCTGTGGTAGGTGGCCA
	A allele	G allele	G allele: CCATAGACGTAGGGCAAGACTAGGCACTGGGTGTCAAGGAGATCTGTGGTAGGTGGCCA
BDPI_disc3	11.6	12.1	SNNNDRGSWSWSDGRS
Brachyury_2	-5.5	6.5	STAGGTGTSAA
Esr2	11.9	10.0	VWRGGTCABNBTRHCCYN
PPAR_I	-15.3	-3.4	CWRAWCYAGGYCAWAGKTCA
SIX5_known1	6.9	12.8	BNVDNGGTRTCAWDYND

Abbreviation: PWM, position weight matrix (Library from Kheradpour and Kellis, 2013).

generalizable to other ancestry groups. The replication of these results in multi-ethnic larger samples and the research of potential molecular mechanisms underlying the genetic associations are warranted.

Conclusion

In summary, our results suggested that in Chinese Han patients with T1D, *QRFPR* rs7679475 polymorphism may be associated with risk for AITD and this effect may be modulated by sex. Further work is required to understand the particular mechanisms underlying the observed effects.

Acknowledgments

This study received the support of Social Welfare Science and Technology Research Project of Zhongshan City (2018B1065).

Disclosure

The authors declare that they have no conflicts of interest.

References

- American Diabetes A. 2. Classification and diagnosis of diabetes: standards of medical care in diabetes-2021. *Diabetes Care*. 2021;44 (Suppl 1):S15–S33. doi:10.2337/dc21-S002
- Eisenbarth GS, Gottlieb PA. Autoimmune polyendocrine syndromes. *N Engl J Med*. 2004;350(20):2068–2079. doi:10.1056/NEJMra030158
- Shun CB, Donaghue KC, Phelan H, Twigg SM, Craig ME. Thyroid autoimmunity in Type 1 diabetes: systematic review and meta-analysis. *Diabet Med*. 2014;31(2):126–135. doi:10.1111/dme.12318
- Jin P, Huang G, Lin J, et al. High titre of antiglutamic acid decarboxylase autoantibody is a strong predictor of the development of thyroid autoimmunity in patients with type 1 diabetes and latent autoimmune diabetes in adults. *Clin Endocrinol (Oxf)*. 2011;74(5):587–592. doi:10.1111/j.1365-2265.2011.03976.x
- Bao YK, Weide LG, Ganesan VC, et al. High prevalence of comorbid autoimmune diseases in adults with type 1 diabetes from the HealthFacts database. *J Diabetes*. 2019;11(4):273–279. doi:10.1111/1753-0407.12856
- Mory DB, Gabbay MA, Rocco ER, et al. High frequency of vitamin D receptor gene polymorphism FokI in Brazilian Type 1 diabetes mellitus patients with clinical autoimmune thyroid disease. *Diabetol Metab Syndr*. 2016;8:29. doi:10.1186/s13098-016-0145-5
- Vallianou N, Stratigou T, Koutroumpi S, Vlassopoulou B, Tzagarakis S, Ioannidis G. Autoimmune thyroiditis in patients with type 1 diabetes mellitus: a long-term follow-up study. *Diabetes Metab Syndr*. 2019;13(1):608–611. doi:10.1016/j.dsx.2018.11.048
- Cardinez N, Lovblom LE, Orszag A, Cherney DZI, Perkins BA. The prevalence of autoimmune diseases in longstanding diabetes: results from the Canadian study of longevity in adults with Type 1 Diabetes. *Can J Diabetes*. 2020;S1499–2671(20)30422–6.
- Tomer Y, Huber A. The etiology of autoimmune thyroid disease: a story of genes and environment. *J Autoimmun*. 2009;32(3–4):231–239. doi:10.1016/j.jaut.2009.02.007
- Tomer Y, Dolan LM, Kahaly G, et al. Genome wide identification of new genes and pathways in patients with both autoimmune thyroiditis and type 1 diabetes. *J Autoimmun*. 2015;60:32–39. doi:10.1016/j.jaut.2015.03.006
- Quintero OL, Amador-Patarroyo MJ, Montoya-Ortiz G, Rojas-Villarraga A, Anaya JM. Autoimmune disease and gender: plausible mechanisms for the female predominance of autoimmunity. *J Autoimmun*. 2012;38(2–3):109–119. doi:10.1016/j.jaut.2011.10.003
- Cai TT, Zhang J, Wang X, et al. Gene-gene and gene-sex epistatic interactions of DNMT1, DNMT3A and DNMT3B in autoimmune thyroid disease. *Endocr J*. 2016;63(7):643–653. doi:10.1507/endocrj.EJ15-0596
- Hughes T, Adler A, Merrill JT, et al. Analysis of autosomal genes reveals gene-sex interactions and higher total genetic risk in men with systemic lupus erythematosus. *Ann Rheum Dis*. 2012;71(5):694–699. doi:10.1136/annrheumdis-2011-200385
- Yan CY, Ma YR, Sun F, et al. Candidate gene associations reveal sex-specific Graves' disease risk alleles among Chinese Han populations. *Mol Genet Genomic Med*. 2020;8(7):e1249. doi:10.1002/mgg3.1249
- Weetman AP. Autoimmune thyroid disease. *Autoimmunity*. 2004;37(4):337–340. doi:10.1080/08916930410001705394
- Thomas G, Sinville R, Sutton S, et al. Capillary and microelectrophoretic separations of ligase detection reaction products produced from low-abundant point mutations in genomic DNA. *Electrophoresis*. 2004;25(10–11):1668–1677. doi:10.1002/elps.200405886
- Sole X, Guino E, Valls J, Iniesta R, Moreno V. SNPStats: a web tool for the analysis of association studies. *Bioinformatics*. 2006;22(15):1928–1929. doi:10.1093/bioinformatics/btl268
- Ward LD, Kellis M. HaploReg: a resource for exploring chromatin states, conservation, and regulatory motif alterations within sets of genetically linked variants. *Nucleic Acids Res*. 2012;40(Database issue):D930–934. doi:10.1093/nar/gkr917

19. Biondi B, Kahaly GJ, Robertson RP. Thyroid dysfunction and diabetes mellitus: two closely associated disorders. *Endocr Rev.* 2019;40(3):789–824.
20. Ban Y, Tozaki T, Nakano Y. Association studies of the GPR103 and BCL2L15 genes in autoimmune thyroid disease in the Japanese Population. *Front Endocrinol (Lausanne).* 2016;7:92. doi:10.3389/fendo.2016.00092
21. Palasca O, Santos A, Stolte C, Gorodkin J, Jensen LJ. TISSUES 2.0: an integrative web resource on mammalian tissue expression. *Database (Oxford).* 2018;2018:bay028. doi:10.1093/database/bay003
22. El-Mehdi M, Takhlidjt S, Khiar F, et al. Glucose homeostasis is impaired in mice deficient in the neuropeptide 26RFa (QRFP). *BMJ Open Diabetes Res Care.* 2020;8(1):e000942. doi:10.1136/bmjdr-2019-000942
23. Prevost G, Jeandel L, Arabo A, et al. Hypothalamic neuropeptide 26RFa acts as an incretin to regulate glucose homeostasis. *Diabetes.* 2015;64(8):2805–2816. doi:10.2337/db14-1864
24. Prevost G, Picot M, Le Solliec MA, et al. The neuropeptide 26RFa in the human gut and pancreas: potential involvement in glucose homeostasis. *Endocr Connect.* 2019;8(7):941–951. doi:10.1530/EC-19-0247
25. Granata R, Settanni F, Trovato L, et al. RFamide peptides 43RFa and 26RFa both promote survival of pancreatic beta-cells and human pancreatic islets but exert opposite effects on insulin secretion. *Diabetes.* 2014;63(7):2380–2393. doi:10.2337/db13-1522
26. Barrett JC, Clayton DG, Concannon P, et al. Genome-wide association study and meta-analysis find that over 40 loci affect risk of type 1 diabetes. *Nat Genet.* 2009;41(6):703–707. doi:10.1038/ng.381
27. van Heel DA, Franke L, Hunt KA, et al. A genome-wide association study for celiac disease identifies risk variants in the region harboring IL2 and IL21. *Nat Genet.* 2007;39(7):827–829. doi:10.1038/ng2058
28. Stahl EA, Raychaudhuri S, Remmers EF, et al. Genome-wide association study meta-analysis identifies seven new rheumatoid arthritis risk loci. *Nat Genet.* 2010;42(6):508–514. doi:10.1038/ng.582
29. Anderson CA, Boucher G, Lees CW, et al. Meta-analysis identifies 29 additional ulcerative colitis risk loci, increasing the number of confirmed associations to 47. *Nat Genet.* 2011;43(3):246–252. doi:10.1038/ng.764
30. Schreiber AL, Arceneaux KP 3rd, Malbrue RA, et al. The effects of high fat diet and estradiol on hypothalamic prepro-QRFP mRNA expression in female rats. *Neuropeptides.* 2016;58:103–109. doi:10.1016/j.npep.2016.01.004
31. Balakhadze M, Giorgadze E, Lomidze M. The frequency of Langerhans islets beta-cells autoantibodies (Anti-GAD) in Georgian children and adolescents with chronic autoimmune thyroiditis. *Int J Endocrinol.* 2016;2016:6597091. doi:10.1155/2016/6597091
32. Kordonouri O, Charpentier N, Hartmann R. GADA positivity at onset of type 1 diabetes is a risk factor for the development of autoimmune thyroiditis. *Pediatr Diabetes.* 2011;12(1):31–33. doi:10.1111/j.1399-5448.2010.00666.x

Diabetes, Metabolic Syndrome and Obesity: Targets and Therapy

Dovepress

Publish your work in this journal

Diabetes, Metabolic Syndrome and Obesity: Targets and Therapy is an international, peer-reviewed open-access journal committed to the rapid publication of the latest laboratory and clinical findings in the fields of diabetes, metabolic syndrome and obesity research. Original research, review, case reports, hypothesis formation, expert opinion

and commentaries are all considered for publication. The manuscript management system is completely online and includes a very quick and fair peer-review system, which is all easy to use. Visit <http://www.dovepress.com/testimonials.php> to read real quotes from published authors.

Submit your manuscript here: <https://www.dovepress.com/diabetes-metabolic-syndrome-and-obesity-targets-and-therapy-journal>