

The Inflammation-Fibrosis Combined Index: A Novel Marker for Predicting Left Ventricular Reverse Remodeling and Prognosis in Patients with HFrEF

Jia Shi ^{1,2,*}, Meng-Jiao Shao ^{3,*}, Miao Yu^{1,2}, Bao-Peng Tang ^{1,2}

¹Cardiac Pacing and Physiological Department, The First Affiliated Hospital of Xinjiang Medical University, Urumqi, Xinjiang, People's Republic of China; ²Xinjiang Key Laboratory of Cardiac Electrophysiology and Cardiac Remodeling, The First Affiliated Hospital of Xinjiang Medical University, Urumqi, Xinjiang, People's Republic of China; ³Department of Cardiology, The Fifth Affiliated Hospital of Sun Yat-sen University, Zhuhai, People's Republic of China

*These authors contributed equally to this work

Correspondence: Bao-Peng Tang, Cardiac Pacing and Physiological Department, The First Affiliated Hospital of Xinjiang Medical University, Urumqi, Xinjiang, People's Republic of China, Email tangbaopeng1111@163.com

Background: Inflammation and cardiac fibrosis are important pathogenic drivers of heart failure. The fibrosis-4 index (FIB-4) is associated with a higher degree of fibrosis. The systemic immune inflammation index (SII) is associated with a higher degree of systemic inflammation status. Previous studies have shown that they are associated with a poor prognosis for cardiovascular disease. We sought to investigate the value of FIB-4 combined with the SII as a novel inflammation-fibrosis combined index (IFCI) in predicting left ventricular reverse remodeling (LVRR) and prognosis among reduced ejection fraction heart failure (HFrEF) patients.

Methods: A total of 895 patients with HFrEF were continuously recruited. Receiver operating characteristic curves were drawn to assess the abilities of inflammation-fibrosis indicators to predict LVRR. Multivariable Cox regression analysis was used to examine independent predictors of composite cardiac events and all-cause death.

Results: After six months of follow-up, 344 (38.4%) patients experienced LVRR. The IFCI had the largest area under the curve (0.835, $P < 0.001$). In multivariate-adjusted logistic regression analyses, FIB-4, SII, and IFCI were predictive of LVRR (P value < 0.05). The IFCI was associated with a 3.686-fold higher risk of non-LVRR (odds ratio [OR] = 3.686, $P < 0.001$). Moreover, an increased IFCI predicted a poor prognosis in HFrEF patients. The highest risk of composite cardiac events (hazard ratio [HR] = 2.716, $P < 0.001$) was observed in the top IFCI-tertile group, and similar results were found regarding independent risk indicators of all-cause death.

Conclusion: In summary, this study indicated that increased IFCI at admission offers good predictability regarding non-LVRR and predicts the risk of all-cause mortality or composite cardiovascular events due to HFrEF patients and could be used as a novel marker.

Keywords: heart failure, left ventricular reverse remodeling, inflammation-fibrosis combined index, fibrosis-4 index, systemic immune inflammation index, prognosis

Introduction

Heart failure (HF) is a shared serious or terminal phase in the progression of various cardiovascular diseases (CVDs) and major causes of death.^{1,2} Mild dysfunction progresses to reduced ejection fraction HF (HFrEF, left ventricular ejection fraction (LVEF) $\leq 40\%$) because of progressive structural remodeling.^{3,4} With significant advances in medical treatment, the beneficial effects of optimal medical therapy based on guideline-directed (GDMT) and/or device therapy promote left ventricular reverse remodeling (LVRR) and reduce the rate of readmission of HF patients, all-cause mortality, and sudden cardiac death.^{5,6} Therefore, in HFrEF patients, it is essential to predict LVRR and distinguish prognosis, thereby helping clinicians identify high-risk patients early.^{7,8} LVRR was defined as a LVEF increase of $\geq 10\%$ or a LVEF $\geq 50\%$ and

a decrease in indexed left ventricular end-diastolic diameter (LVEDDi) of $\geq 10\%$ or LVEDDi of $\leq 33 \text{ mm/m}^2$ at least 6 months after the initial increase.^{9,10}

HF resulting from complex and multifactorial factors, including inflammation and cardiac fibrosis, is an important pathogenic driver, eventually leading to cardiac dysfunction and patient death.¹¹ In patients with HFrEF, inflammation and cardiac fibrosis have been associated with a higher risk of cardiovascular events and are proposed to hinder LVRR, thereby conferring persistent vulnerability to hospitalization for heart failure and mortality in patients.¹² The systemic immune inflammation index (SII) is an innovative biomarker and is an excellent indicator of the local immune response and systemic inflammation that combines information regarding three significant immune cells represented by neutrophils, lymphocytes, and platelets, defined as $\text{platelet} \times \text{neutrophil/lymphocyte}$.¹³ SII has been shown to be associated with a poor prognosis of cardiovascular disease and to be a better representation of the systemic inflammation status with greater stability.^{14,15} In critical patients with congestive HF, the SII is positively correlated with short-term mortality, in-hospital mortality, and a poor prognosis.^{16,17} However, the SII has not been evaluated as a prognostic indicator of LVRR in patients with HFrEF.

The fibrosis-4 index (FIB-4) is a noninvasive, simple, and economical marker to evaluate liver fibrosis and the stage of hepatic disease and is easy to obtain, calculated by $\text{age (years)} \times \text{aspartate transaminase (U/L)} / (\text{platelet count (} 10^9/\text{L)} \times \text{alanine transaminase (U/L)}^{1/2})$.¹⁸ The FIB-4 has been reported to predict mortality and HF readmission rates in patients with acute HF, which is positively correlated with poor prognosis.¹⁹ In patients with HF with preserved ejection fraction, increased FIB-4 values are also an important predictor of cardiovascular events.²⁰ It was found that FIB-4 was independently associated with both cardiac and noncardiac death after stratification of patients with HF according to LVEF value.²¹ There is no large sample study evaluating the diagnostic and prognostic value of FIB-4 for LVRR in patients with HFrEF.

The level of systemic inflammation affects the level of myocardial fibrosis, and a high level of inflammation means a high level of fibrosis, which in turn increases the risk of death during various diseases, including HFrEF.^{12,22} We integrated FIB4 and SII, two types of hematology indicators, as a novel inflammation-fibrosis combined index (IFCI), which is composed of the fibrosis index and systemic inflammation level. It is better to combine fibrosis and inflammation indicators since both inflammation and fibrosis may be related to the disease status and prognosis in HFrEF patients. Until now, the predictive effect of IFCI on LVRR has never been investigated in patients with HFrEF. Therefore, we designed this study to determine whether IFCI could provide a new leverage to personalize the risk of LVRR and prognosis. Targeted IFCI screening of individuals with HFrEF may pave the way for future personalized preventive treatment. In view of this, the present study attempted to elucidate: first, whether FIB-4, SII and the IFCI predict LVRR after 6 months in patients with HFrEF; second, whether these indices predict subsequent prognosis.

Methods

This study protocol was approved by the Medical Ethics Committee of the First Affiliated Hospital of Xinjiang Medical University (Approval ID: 20170605–05) and conformed to the principles and guidelines of the Declaration of Helsinki. This study was registered in the Chinese Clinical Registry Center (registration no. ChiCTR1900021055).

Study Population

In this retrospective cohort study, patients were consecutively enrolled from January 2017 to January 2021, and 2,436 consecutive patients were diagnosed with LVEF of $\leq 40\%$ (HFrEF) at the Xinjiang Medical University First Affiliated Hospital.

The inclusion criteria were hospital admission for those who were first diagnosed prior to enrollment, LVEF $\leq 40\%$, New York Heart Association (NYHA) class II–IV heart failure, and optimal medical therapy based on guidelines (GDMT).^{1,23}

The exclusion criteria were severe renal and hepatic insufficiency defined as serum creatinine $> 221 \mu\text{mol/L}$, Child–Pugh Class C, inoperable aortic valvular heart disease, life expectancy < 1 year due to causes other than HF such as advanced cancer, cardiac transplantation or revascularization indicated or expected within 6 months, severe obstructive or restrictive pulmonary disease, coronary revascularization (PCI or CABG) within the previous 3 months, immune system disease and acute, chronic infection diseases.²⁴ Patients suffering from cardiomyopathy with possible spontaneous LVRR, such as patients suffering from tachycardia-induced cardiomyopathy, perinatal cardiomyopathy, myocarditis, and alcoholic dilated cardiomyopathy, were excluded.²⁵ In the present study, we finally enrolled 895 patients. The detailed recruitment protocol is shown in Figure 1.

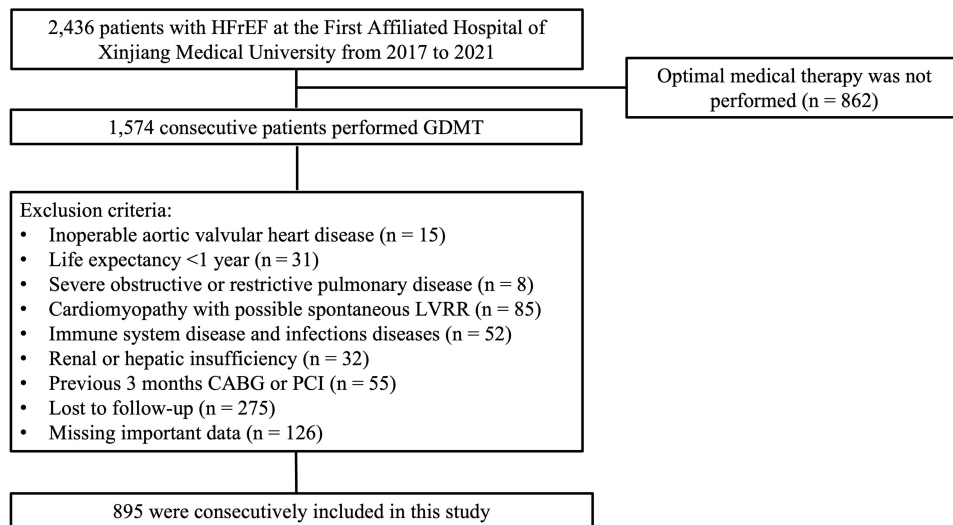


Figure 1 Flow chart of patient enrollment.

Clinical and Echocardiographic Variables

Baseline demographic, clinical, laboratory, and echocardiographic variables were evaluated. Clinical characteristics comprised type of HF, relevant medical history, comorbidities, and HF medication. Echocardiography was performed by a senior echocardiographer at admission and during the follow-up period and calculated according to established American Society of Echocardiography protocols.²⁶

The indices used in this study are described as follows:

$$\text{FIB} - 4 = \text{age}(\text{years}) \times \text{aspartate transaminase}(\text{U/L}) / \left(\text{platelet count}(\text{10}^9/\text{L}) \times \text{alanine transaminase}(\text{U/L})^{1/2} \right).^{27}$$

$$\text{SII} = \text{platelet} \times \text{neutrophil/lymphocyte}.^{28}$$

$\text{IFCI} = -7.6229 + 0.5035 * \text{FIB} - 4 + 2.5863 * \text{SII}$ was calculated based on the multivariate logistic regression model.

Study Outcomes and Endpoints

LVRR was defined as $\text{LVEF} \geq 50\%$ or $a \geq 10\%$ increase and $\text{LVEDDI} [\text{LVEDD}/(\text{body surface area})] \leq 33 \text{ mm/m}^2$ or $a \geq 10\%$ decrease from baseline.^{4,29} The primary endpoints were composite cardiac events, including cardiac death, heart transplantation, hospitalization due to worsening heart failure, and lethal arrhythmia (hospitalization for sustained ventricular tachycardia or ventricular fibrillation). The secondary endpoint was all-cause mortality.

Statistical Analysis

The normality test was checked using the Shapiro–Wilk test for the continuous variables. Continuous variables were presented as mean \pm standard deviations (SD) in cases of meeting the normality distribution or as median (quartiles Q1–Q3) in cases of not meeting the normality distribution. The parametric Student's *t*-test and the non-parametric Mann–Whitney *U*-test were performed to compare the differences between the two groups. Classified data are presented as proportions and were evaluated by the chi-square test. The levels of biomarkers such as FIB-4, SII, IFCI and NT-pro-BNP and serum creatine were log₁₀ transformed.

Receiver operating characteristic (ROC) curves were constructed, and the areas under the curves (AUC) were measured to estimate the ability of the FIB-4, SII and IFCI to predict LVRR. Combined ROC analysis based on the multivariate logistic regression model was conducted for the IFCI. Moreover, the comparisons of AUC values were performed using the DeLong test. To test whether IFCI improved LVRR prediction of the other clinical parameters, we used the continuous net reclassification index (NRI) and the integrated discrimination improvement (IDI).

Logistic regression analyses were performed to find the relationship between LVRR and FIB-4, SII and IFCI. Potential nonlinear associations between the levels of IFCI and the incidence of LVRR were examined with restricted

cubic splines. Then, the IFCI was categorized into three groups according to the tertile points. The comparison of measurement data among tertiles of IFCI groups was based on one-way ANOVA.

Kaplan–Meier analysis was used to compare the probability of composite cardiac events and all-cause mortality with HF_rEF patients. Univariate and multivariable Cox regressions were used to analyze factors related to composite cardiac events and all-cause death. To avoid model overfitting, only parameters significantly associated with outcome in the univariate analyses were included in the multivariate Cox regression model performed using step-down procedures.

All statistical analyses were performed using SPSS version 26.0 (SPSS Inc., Chicago, IL, USA) and R software (version 4.0.1). A *P* value < 0.05 was considered statistically significant.

Results

Comparison of Baseline Characteristics

A total of 895 patients were divided into 2 groups according to whether they had LVRR. By 6 months of GDMT treatment, 344 (38.4%) patients were experiencing LVRR. An ischemic etiology of HF was present in 356 (39.8%) patients, and more ischemic cases were present in the non-LVRR group (48.6% vs 25.6%). Compared to non-LVRR patients, the prevalence rates of hypertension, coronary heart disease and diabetes mellitus were significantly higher in LVRR patients with heart failure (*P* < 0.05). Baseline laboratory results, including FIB-4 (2.30 [1.58, 6.41] vs 1.16 [0.62, 1.82], *P* < 0.001), SII (678.71 [440.14, 985.33] vs 395.98 [216.05, 604.76], *P* < 0.001) and NT-pro BNP (3320.00 [744.00, 5650.00] vs 813.00 [226.50, 3642.50], *P* < 0.001), were higher in non-LVRR patients than in LVRR patients. The available echocardiographic data at baseline and at the 6-month follow-up are included in Table 1. Compared to LVRR, the mean LVEDDi at baseline was 36.11 ± 5.43 mm/m² (35.54 ± 5.37 vs 36.49 ± 5.45 mm/m², *P* = 0.038), with a mean LVEF of 34.44 ± 5.05% (33.66 ± 4.65 vs 34.93 ± 5.24, *P* = 0.001).

Table 1 Baseline Characteristics of the Study Population

	All Patients (n = 895)	LVRR (n = 344)	Non-LVRR (n = 551)	P-value
Age (years)	61.25 ± 12.12	61.41 ± 12.02	61.14 ± 12.19	0.749
Men, n (%)	699 (78.1)	255 (74.1)	444 (80.6)	0.023
Type of Heart Failure				<0.001
DCM	466 (52.1)	214 (62.2)	252 (45.7)	
Ischemic	356 (39.8)	88 (25.6)	268 (48.6)	
Hypertensive	43 (4.8)	29 (8.4)	14 (2.5)	
Others	30 (3.4)	13 (3.8)	17 (3.1)	
Symptom duration (months)	17.02 ± 11.34	15.74 ± 12.02	17.82 ± 10.82	0.007
NYHA III–IV, n (%)	699 (78.1)	254 (73.8)	445 (80.8)	0.015
Baseline vital signs				
Systolic blood pressure, mmHg	117.14 ± 19.02	118.81 ± 20.60	116.09 ± 17.91	0.037
Diastolic blood pressure, mm Hg	71.39 ± 13.70	73.01 ± 14.00	70.37 ± 13.43	0.005
Heart rate, beats/min	81.00 ± 18.18	83.07 ± 19.13	79.70 ± 17.45	0.007
Medical history, n (%)				
Hypertension	503 (56.2)	209 (60.8)	294 (53.4)	0.03
Coronary heart disease	404 (45.3)	109 (31.9)	295 (53.6)	<0.001
Myocardial infarction	86 (9.6)	20 (5.8)	66 (12.0)	0.002
Diabetes mellitus	297 (33.2)	80 (23.3)	217 (39.4)	<0.001
Atrial fibrillation	219 (24.5)	74 (21.5)	145 (26.3)	0.104
CLBBB	457 (51.1)	192 (55.8)	265 (48.1)	0.015

(Continued)

Table 1 (Continued).

	All Patients (n = 895)	LVRR (n = 344)	Non-LVRR (n = 551)	P-value
Baseline Echocardiography parameters				
LVEF (%)	34.44 ± 5.05	33.66 ± 4.65	34.93 ± 5.24	0.001
LVEDD (mm)	68.43 ± 8.46	67.49 ± 6.27	69.01 ± 9.53	0.009
LVEDDI (mm/m ²)	36.11 ± 5.43	35.54 ± 5.37	36.49 ± 5.45	0.038
LVESD (mm)	56.72 ± 8.42	55.64 ± 6.45	57.40 ± 9.38	0.002
6-month follow-up Echocardiography parameters				
LVEF (%)	38.94 ± 7.82	44.61 ± 8.09	35.37 ± 5.07	<0.001
LVEDD (mm)	65.52 ± 9.20	60.46 ± 6.92	68.70 ± 9.04	<0.001
LVEDDI (mm/m ²)	34.72 ± 5.98	31.41 ± 5.01	36.92 ± 5.55	<0.001
LVESD (mm)	53.30 ± 9.38	47.84 ± 7.73	56.72 ± 8.68	<0.001
Baseline GDMT use, n (%)				
ARNI	613 (68.5)	252 (73.3)	361 (65.5)	0.015
ACEI/ARB	282 (31.5)	92 (26.7)	190 (34.5)	0.015
β-Blocker	895 (100)	344 (100)	551 (100)	>0.999
MRA	896 (100)	344 (100)	551 (100)	>0.999
Diuretic	527 (58.9)	179 (52.0)	348 (63.2)	0.001
CRT-P/D	383 (42.8)	170 (49.4)	213 (38.7)	0.002
ICD/SICD	270 (30.2)	100 (29.1)	170 (30.9)	0.572
Baseline laboratory results				
Neutrophil, 10 ⁹ /L	5.194 ± 1.699	4.953 ± 1.619	5.337 ± 1.730	<0.001
Lymphocyte, 10 ⁹ /L	1.896 ± 0.769	1.915 ± 0.810	1.885 ± 0.746	0.295
Platelet, 10 ⁹ /L	221.880 ± 80.796	222.080 ± 79.418	221.760 ± 81.674	0.478
Aspartate transaminase (U/L)	34.213 ± 17.557	31.590 ± 17.692	35.798 ± 17.298	<0.001
Alanine transaminase (U/L)	30.380 ± 22.139	33.392 ± 25.408	28.587 ± 19.748	0.003
SII (median [IQR])	534.10 [370.23, 813.22]	395.98 [216.05, 604.76]	678.71 [440.14, 985.33]	<0.001
FIB-4 (median [IQR])	1.76 [1.19, 3.45]	1.16 [0.62, 1.82]	2.30 [1.58, 6.41]	<0.001
CRP, mg/L (median [IQR])	11.10 [6.90, 24.30]	7.40 [6.50, 17.12]	12.10 [7.10, 25.20]	<0.001
IL-6, pg/L (median [IQR])	7.59 [4.23, 15.69]	5.57 [2.14, 9.10]	9.37 [5.04, 19.33]	<0.001
eGFR, mL/min/1.73 m ²	79.37 ± 19.34	80.55 ± 17.79	78.66 ± 20.22	0.164
NT-pro BNP, pg/mL (median [IQR])	2000.00 [509.00, 5603.00]	813.00 [226.50, 3642.50]	3320.00 [744.00, 5650.00]	<0.001
cTnl, ug/L	0.05 (0.02, 0.14)	0.07 (0.02, 0.15)	0.04 (0.02, 0.14)	0.022

Notes: Values are presented as mean ± SD, median (interquartile range), or n (%).

Abbreviations: LVRR, left ventricular reverse remodelling; DCM, dilated cardiomyopathy; NYHA, New York Heart Association; LVEDD, left ventricular end diastolic diameter; LVEDDI, indexed left ventricular end-diastolic dimension; LVESD, left ventricular end systolic diameter; LVEF, left ventricular ejection fraction; NT-proBNP, N-terminal prohormone of brain natriuretic peptide; ACEI, angiotensin-converting enzyme inhibitors; ARNI, angiotensin receptor-neprilysin inhibitor; ARB, angiotensin receptor blocker; MRA, mineralocorticoid receptor antagonist; CRT, cardiac resynchronization therapy; ICD, internal cardioverter defibrillator; CRP, C-reactive protein; eGFR, estimated glomerular filtration rate; SII, Systemic immune inflammation index; FIB-4, fibrosis-4 index; GDMT, guideline-directed medical therapy.

The FIB-4, SII and IFCI Were Able to Predict LVRR

The performance of the predictive indicators is shown in Table 2. According to the results obtained for ROC analysis (Figure 2), the AUCs for FIB4, SII, NT-pro BNP and IFCI were 0.794 (95% CI: 0.764–0.824), 0.750 (95% CI: 0.718–0.782), 0.658 (95% CI: 0.621–0.695) and 0.835 (95% CI: 0.809–0.860), respectively. The IFCI exhibited the largest AUC of all the scores (both *P* values < 0.01). After the DeLong test, the predictive ability of the IFCI was confirmed as being significantly higher than that of the other indicators, FIB4, SII and NT-pro BNP (*Z* value = 3.474, 7.715 and 7.597, respectively). The AIC decreased in IFCI to FIB-4, SII and NT-proBNP (IFCI: 874.69 vs FIB4: 985.14 vs SII:1016.56 vs 1155.88), which showed that IFCI improved the calibration of the predictive LVRR. Moreover, compared with NT-proBNP, the IFCI, FIB4 and SII have better predictive ability (IDI = 0.265, 0.151 and 0.121, both *P* values < 0.01; NRI = 0.864, 0.653, and 0.456, both *P* values < 0.01).

Table 2 The Predicting Ability of FIB-4, SII and IFCI with the LVRR

	NT-proBNP	IFCI	FIB4	SII
Cut-off value	1210.2	47.94	1.308	437.22
AIC	1155.88	874.69	985.14	1016.56
AUC	0.658(0.621–0.695)	0.836(0.810–0.862)	0.794(0.764–0.824)	0.750(0.718–0.782)
Sensitivity	0.662	0.684	0.874	0.791
Specificity	0.581	0.843	0.558	0.581
NRI	Ref.	0.864(0.746–0.9829)	0.653(0.534–0.772)	0.456(0.328–0.584)
IDI	Ref.	0.265(0.234–0.295)	0.151(0.127–0.176)	0.121(0.096–0.148)

Abbreviations: NT-proBNP, N-terminal prohormone of brain natriuretic peptide; SII, Systemic immune inflammation index; FIB-4, fibrosis-4 index; IFCI: inflammation-fibrosis combined index; AIC, Akaike information criteria; IDI, integrated discrimination improvement; NRI, net reclassification improvement; AUC, area under curves.

Elevated FIB-4, SII and IFCI are Independent Risk Indicators for Non-LVRR

After adjusting for several potential risk indicators, such as type of heart failure, symptom duration, medical history, and baseline GDMT treatment, the SII (adjusted OR=1.003, 95% CI 1.002–1.004, $P < 0.001$), FIB-4 (adjusted OR = 1.778, 95% CI 1.567–2.018, $P < 0.001$), IFCI (adjusted OR = 3.686, 95% CI 2.937–4.627, $P < 0.001$), and log-NT-pro BNP (adjusted OR = 2.468, 95% CI 1.957–3.113, $P < 0.001$) remained independent risk indicators in the non-LVRR group (Table 3).

To characterize the relationship between IFCI and the odds ratio for LVRR at the 6-month follow-up, a spline curve was fitted in adjustment for a potential confounder model, which demonstrated there is significant relationship between IFCI levels and LVRR and had linear association (Figure 3). The study population was stratified according to IFCI tertiles: the baseline tertiles of the IFCI (group 1: <37.94 , group 2: $37.94–59.03$, group 3: ≥ 59.03). All participants were categorized into 3 groups. The clinical characteristics of the 3 groups are shown in Table 4. Patients in the top IFCI tertiles group had higher levels of age, symptom duration of HF, medical history of coronary heart disease, LVEDD, LVEDDi, LVESD and NT-pro BNP and lower levels of LVEF; moreover, this group exhibited the highest incidence of

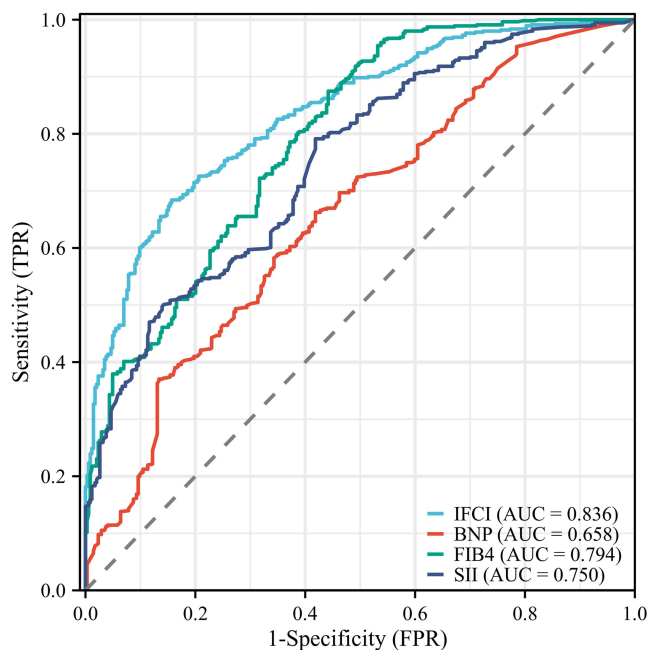


Figure 2 Receiver operating characteristic curves for FIB-4, SII, NT-proBNP and IFCI in predicting the incidence of LVRR.

Abbreviations: AUC, area under the curve; FPR: False positive rate; TPR, True positive rate; LVRR, left ventricular reverse remodeling; NT-proBNP, N-terminal prohormone of brain natriuretic peptide; SII, Systemic immune inflammation index; FIB-4, fibrosis-4 index.

Table 3 Elevated Value of FIB-4, SII and IFCI are Independent Risk Factors of Non-LVRR

Characteristic	Univariable Analysis- Model A		Multivariable Analysis-Model B		Multivariable Analysis-Model C		Multivariable Analysis-Model D	
	OR (95% CI)	P-value	Adjusted OR (95% CI)	P-value	Adjusted OR (95% CI)	P-value	Adjusted OR (95% CI)	P-value
Log-NT-pro BNP	2.378 (1.924–2.939)	<0.001	2.373 (1.918–2.937)	<0.001	2.343 (1.870–2.936)	<0.001	2.468 (1.957–3.113)	<0.001
SII	1.003 (1.002–1.004)	<0.001	1.003 (1.002–1.004)	<0.001	1.003 (1.002–1.004)	<0.001	1.003 (1.002–1.004)	<0.001
FIB-4	1.846 (1.625–2.096)	<0.001	1.841 (1.620–2.092)	<0.001	1.785 (1.573–2.025)	<0.001	1.778 (1.567–2.018)	<0.001
IFCI	1.070 (1.059–1.081)	<0.001	1.070 (1.058–1.082)	<0.001	1.070 (1.059–1.083)	<0.001	1.073(1.061–1.085)	<0.001
IFCI tertiles								
Group 1	Ref.		Ref.		Ref.		Ref.	
Group 2	4.228 (2.999–5.959)	<0.001	4.310 (3.026–6.141)	<0.001	4.407 (3.102–6.262)	<0.001	4.682 (3.251–6.741)	<0.001
Group 3	27.689 (17.027–45.028)	<0.001	28.290 (17.143–46.687)	<0.001	29.239 (17.788–46.062)	<0.001	30.792 (18.346–51.356)	<0.001

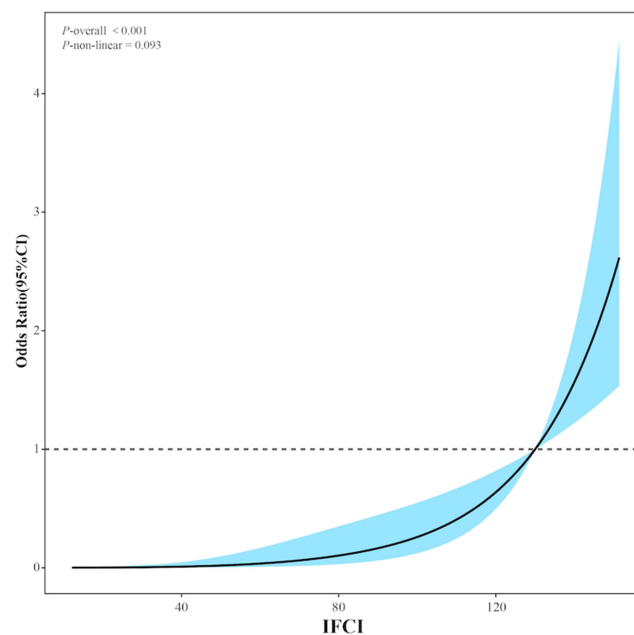
Notes: Model A: Unadjusted OR. Model B: adjusted for sex, Type of Heart Failure, Symptom duration. Model C: adjusted for sex, Type of Heart Failure, Symptom duration, History of hypertension, Coronary heart disease, Atrial fibrillation. Model D: adjusted for sex, Type of Heart Failure, Symptom duration, History of hypertension, Coronary heart disease, Atrial fibrillation, ARNI, Diuretic.

Abbreviations: OR, odds ratio; CI, confidence interval. NT-proBNP, N-terminal prohormone of brain natriuretic peptide; ARNI, angiotensin receptor-neprilysin inhibitors; SII, Systemic immune inflammation index; FIB-4, fibrosis-4 index; IFCI, inflammation-fibrosis combined index.

composite cardiac events and mortality (all P values <0.05). Making the IFCI a categorical variable (tertiles analysis), compared to the lower tertiles, the top tertile group exhibited the highest OR of incident non-LVRR [30.792 (18.346–51.356), $P < 0.001$] after adjusting for potential risk indicators.

Increased IFCI Predicts Poor Prognosis in HFrEF Patients

During a median of 17 (Q1:9 ~ Q3:29) months of follow-up, 331 (37.0%) patients had composite cardiac events, and 160 (17.9%) died from any cause. By applying a cubic spline curve, we attempted to explore a potential association between poor prognosis and IFCI. After conducting significance testing, it was determined that there is significant relationship between the IFCI levels and poor prognosis, including composite cardiac events and all-cause death. In addition, it was found that poor prognosis had a nonlinear association with IFCI levels. The [Figure 4](#) illustrates the specific results.

**Figure 3** Spline curve plotting baseline IFCI against the odds ratio of non-LVRR.

Abbreviation: IFCI, inflammation-fibrosis combined index.

Table 4 Baseline Characteristics of Study Population According to Tertiles of Inflammation-Fibrosis Combined Index

Variable	IFCI			
	Group 1	Group 2	Group 3	P-value
Age (years)	58.82 ± 11.58	63.849 ± 11.36	61.05 ± 12.89	<0.001
Men, n (%)	219 (73.72)	247 (82.3)	233 (78.2)	0.040
Type of Heart Failure, n (%)				
DCM	212 (71.4)	138 (46.0)	116 (38.9)	<0.001
Ischemic	57 (19.2)	139 (46.3)	160 (53.7)	
Hypertensive	18 (6.1)	17 (5.7)	8 (2.7)	
Others	10 (3.4)	6 (2.7)	14 (4.7)	
Symptom duration (months)	16.34 ± 11.41	16.35 ± 10.19	18.36 ± 12.23	0.043
NYHA III–IV, n (%)	225 (75.5)	228 (76.5)	246 (82.3)	0.097
LVRR, n (%)	210 (70.7)	110 (36.7)	24 (8.1)	<0.001
Baseline vital signs				
Systolic blood pressure, mmHg	118.80 ± 21.46	115.61 ± 17.73	116.99 ± 17.57	0.118
Diastolic blood pressure, mmHg	73.08 ± 14.58	70.49 ± 13.10	70.60 ± 13.28	0.034
Heart rate, beats/min	81.53 ± 18.92	80.05 ± 17.31	81.00 ± 18.18	0.541
Medical history, n (%)				
Hypertension	188 (63.3)	167 (55.7)	148 (49.7)	0.004
Coronary heart disease	59 (20.0)	167 (55.7)	182 (61.3)	<0.001
Myocardial infarction	16 (5.4)	24 (8.0)	46 (15.4)	<0.001
Diabetes mellitus	36 (12.1)	127 (42.3)	133 (44.6)	<0.001
Atrial fibrillation	68 (22.9)	83 (27.7)	68 (22.8)	0.287
CLBBB	165 (55.6)	153 (51.0)	139 (46.6)	0.079
Baseline Echocardiography parameters				
LVEF (%)	34.24 ± 4.55	34.89 ± 4.72	34.33 ± 5.75	0.232
LVEDD (mm)	67.45 ± 7.10	68.10 ± 7.82	69.72 ± 10.03	0.047
LVEDDi (mm/m ²)	35.07 ± 5.31	36.63 ± 5.22	36.70 ± 5.63	0.003
LVESD (mm)	55.75 ± 7.04	56.22 ± 7.68	58.20 ± 10.4	0.027
6-month follow-up Echocardiography parameters				
LVEF (%)	40.86 ± 8.64	38.54 ± 6.87	36.19 ± 6.67	<0.001
LVEDD (mm)	62.86 ± 8.08	65.81 ± 8.73	68.42 ± 9.87	<0.001
LVEDDi (mm/m ²)	33.06 ± 5.50	35.64 ± 5.89	36.75 ± 6.00	<0.001
LVESD (mm)	50.36 ± 8.87	53.20 ± 8.51	56.34 ± 9.76	<0.001
Baseline GDMT use, n (%)				
ARNI	196 (66.0)	210 (70.0)	207 (69.5)	0.521
ACEI/ARB	101 (34.0)	90 (30.0)	91 (30.5)	0.521
β-Blocker	296 (99.7)	298 (99.3)	291 (97.7)	0.050
MRA	294 (99.0)	297 (99.0)	293 (98.3)	0.690
Diuretic	164 (55.2)	174 (58.0)	189 (63.4)	0.118
CRT-P/D	160 (53.9)	133 (44.3)	90 (30.2)	<0.001
ICD/SICD	88 (32.6)	79 (26.3)	103 (34.6)	0.088

(Continued)

Table 4 (Continued).

Variable	IFCI			
	Group 1	Group 2	Group 3	P-value
Baseline laboratory results				
Log-SII	2.49 ± 0.23	2.71 ± 0.17	2.98 ± 0.25	<0.001
FIB-4	1.10 ± 0.64	1.92 ± 0.83	6.13 ± 3.64	<0.001
eGFR, mL/min/1.73 m ²	80.08 ± 18.20	79.92 ± 18.84	78.12 ± 20.91	0.906
Log-NT-pro BNP	2.95 ± 0.71	3.23 ± 0.66	3.37 ± 0.61	<0.001
CRP, mg/L	13.59 ± 12.89	17.12 ± 15.20	20.64 ± 16.27	<0.001
IL-6, pg/L	8.42 ± 0.51	11.02 ± 0.55	14.77 ± 0.63	<0.001
Endpoints				
Composite cardiac events	71 (23.9)	117 (39.0)	143 (48.1)	<0.001
All-cause mortality	36 (12.1)	51 (17.0)	73 (24.5)	<0.001

Note: Values are presented as mean ± SD or n (%).

Abbreviations: LVRR, left ventricular reverse remodelling; DCM, dilated cardiomyopathy; NYHA, New York Heart Association; LVEDD, left ventricular end diastolic diameter; LVEDDI, indexed left ventricular end-diastolic dimension; LVESD, left ventricular end systolic diameter; LVEF, left ventricular ejection fraction; NT-pro BNP, N-terminal prohormone of brain natriuretic peptide; ACEI, angiotensin-converting enzyme inhibitor; ARNI, angiotensin receptor-neprilysin inhibitors; ARB, angiotensin receptor blocker; MRA, mineralocorticoid receptor antagonist; CRT, cardiac resynchronization therapy; ICD, internal cardioverter defibrillator; eGFR, estimated glomerular filtration rate; SII, Systemic immune inflammation index; FIB-4, fibrosis-4 index; GDMT, guideline-directed medical therapy.

Patients in the top tertiles of the IFCI had a significantly increased risk of composite cardiac events compared with other groups, as demonstrated in [Figure 5](#) (log-rank $\chi^2 = 35.507$, $P < 0.001$) and an increased risk of all-cause mortality (log-rank $\chi^2 = 17.148$, $P < 0.001$).

After adjusting for several potential risk indicators, such as type of heart failure, symptom duration, medical history, and baseline GDMT treatment, the values of SII (adjusted HR=2.212, 95% CI 1.520–3.218, $P < 0.001$), FIB-4 (adjusted HR = 1.052, 95% CI 1.019–1.086, $P = 0.002$), IFCI (adjusted HR = 1.007, 95% CI 1.004–1.010, $P < 0.001$), and NT-pro BNP (adjusted HR = 1.270, 95% CI 1.080–1.492, $P = 0.004$) remained independent risk indicators of composite cardiac

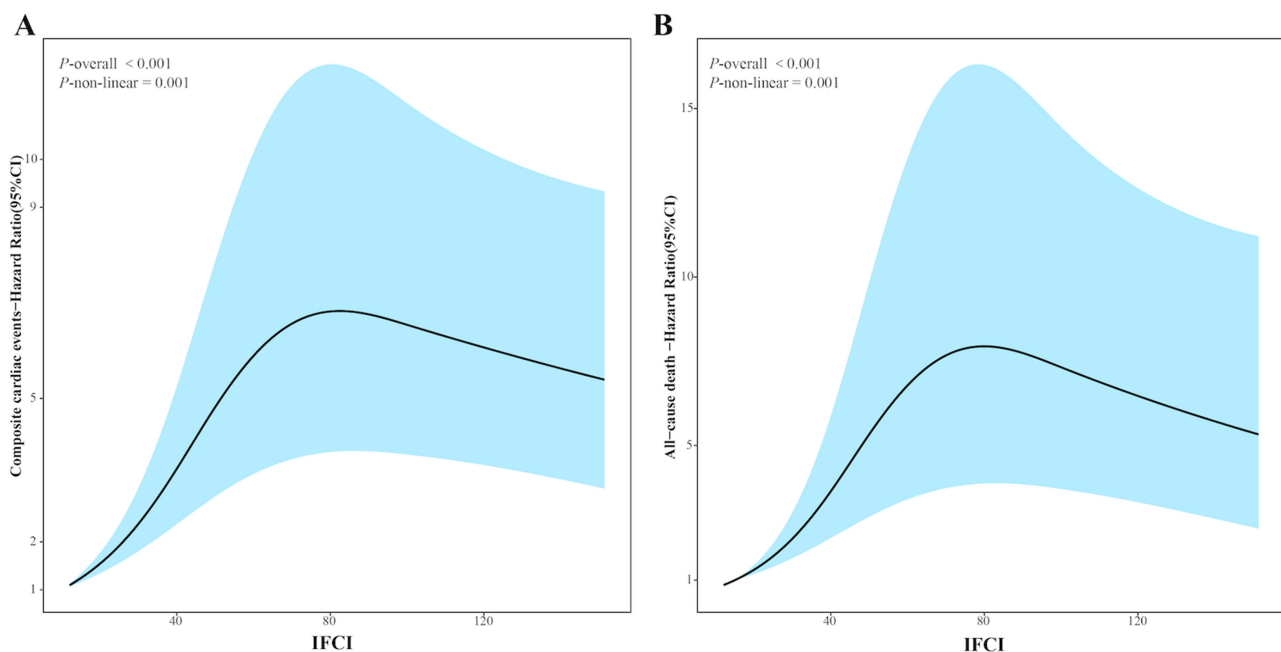


Figure 4 Spline curve plotting baseline IFCI against the Hazard ratio odds ratio of poor prognosis, including composite cardiac events (A) and all-cause death (B).
Abbreviation: IFCI, inflammation-fibrosis combined index.

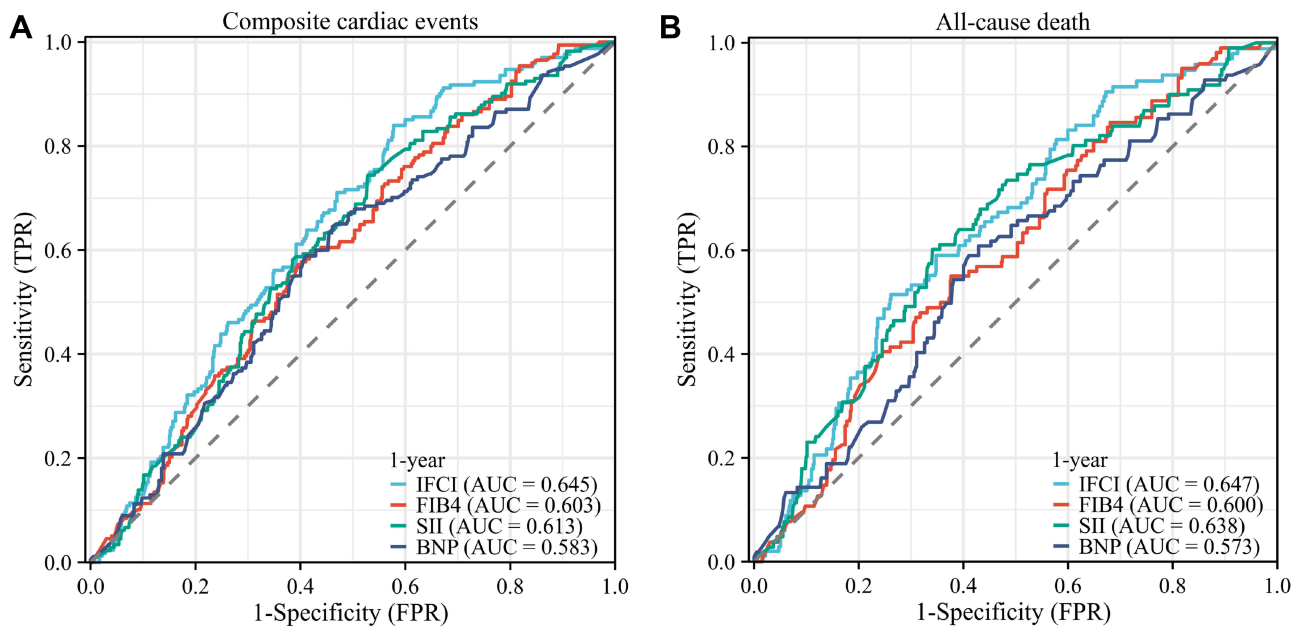


Figure 5 Kaplan–Meier curves. Probability of a composite endpoint(A) and all causes of death (B) in the IFCI tertile groups.

events. When the IFCI was made a categorical variable (tertiles analysis), compared to the first tertiles, the top tertile group exhibited the highest HR of incident composite cardiac events [2.716 (1.777–4.151), $P < 0.001$] after adjusting for potential risk indicators, and similar results were seen regarding the independent risk indicators of all-cause death (Table 5).

The performance of predicting 1-year prognostic ability, including composite cardiac events and all-cause death, of NT-pro BNP, IFCI, FIB4 and SII is shown in Figure 6. According to the results obtained for the time-dependent ROC curves, the IFCI exhibited the largest AUC of all the scores (both P values < 0.01). The AIC decreased in IFCI to FIB-4, SII and NT-proBNP, which showed that IFCI improved the calibration of the 1-year prognosis, including composite cardiac events and all-cause death. Moreover, compared with NT-proBNP, the IFCI has better predictive ability for the 1-year prognosis of the 1-year prognosis, including composite cardiac events and all-cause death. Compared with NT-pro BNP, the predictive ability of FIB4 and SII was not significantly different (Table 6).

Table 5 Elevated Value of Inflammation-Fibrosis Combined Index are Independent Risk Factors of Poor Prognosis in HFref Patients

Characteristic	Composite endpoint				All Cause Death			
	Univariable Analysis		Multivariable Analysis		Univariable Analysis		Multivariable Analysis	
	HR (95% CI)	P	Adjust HR (95% CI)	P	HR (95% CI)	P	Adjust HR (95% CI)	P
Log-SII	2.215 (1.544 – 3.177)	<0.001	2.212 (1.520 – 3.218)	<0.001	2.658 (1.581 – 4.467)	<0.001	2.914 (1.663 – 5.107)	<0.001
FIB-4	1.048 (1.017 – 1.080)	0.002	1.052 (1.019 – 1.086)	0.002	1.046 (1.002 – 1.092)	0.042	1.054 (1.007 – 1.104)	0.025
IFCI	1.007 (1.004 – 1.010)	<0.001	1.007(1.004 – 1.010)	<0.001	1.006 (1.002 – 1.011)	0.003	1.008 (1.003 – 1.012)	<0.001
Log-NT-pro BNP	1.326 (1.132 – 1.552)	<0.001	1.270 (1.080 – 1.492)	0.004	1.433 (1.134 – 1.810)	0.003	1.354 (1.066 – 1.720)	0.013
IFCI tertiles								
Group 1	Ref.		Ref.		Ref.		Ref.	
Group 2	1.974 (1.470 – 2.652)	<0.001	2.070 (1.520 – 2.819)	<0.001	1.644 (1.072 – 2.520)	0.023	1.908 (1.223 – 2.976)	0.004
Group 3	2.263 (1.702 – 3.008)	<0.001	2.388 (1.761 – 3.226)	<0.001	2.265 (1.519 – 3.376)	<0.001	2.716 (1.777 – 4.151)	<0.001

Notes: Adjusted for sex, Type of Heart Failure, Symptom duration, History of hypertension, Coronary heart disease, Diabetes mellitus, Atrial fibrillation, CRT D/P, ARNI, Diuretic. **Abbreviations:** HR, Hazard Ratio; CI, confidence interval; NT-proBNP, N-terminal prohormone of brain natriuretic peptide; CRT, cardiac resynchronization therapy; ICD, internal cardioverter defibrillator; ARNI, angiotensin receptor-neprilysin inhibitors; SII, Systemic immune inflammation index; FIB-4, fibrosis-4 index; IFCI, inflammation-fibrosis combined index.

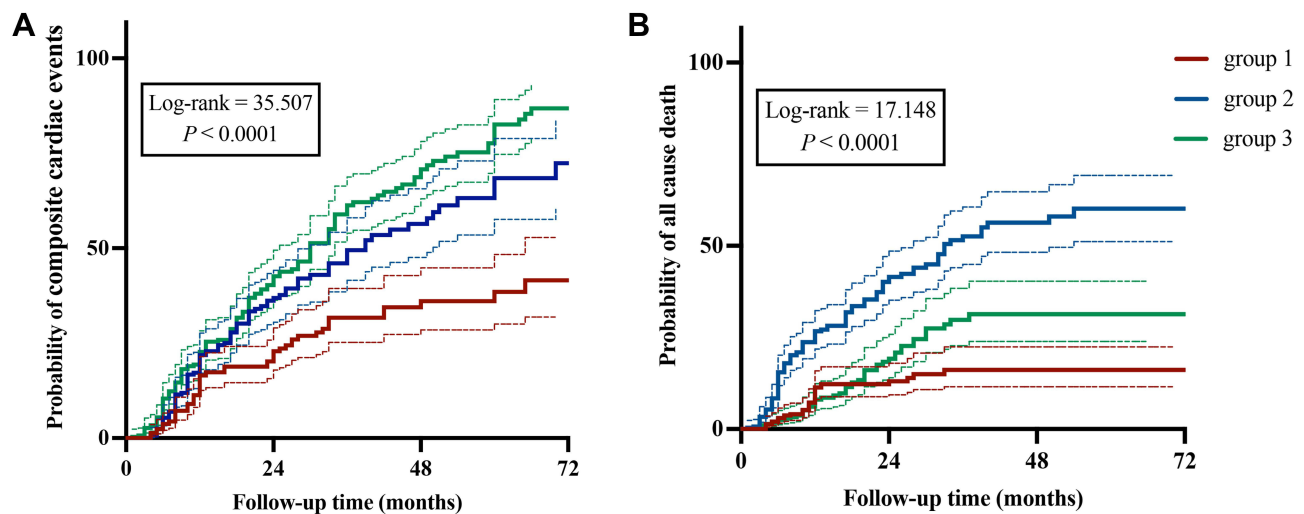


Figure 6 Time-dependent ROC curves for FIB-4, SII, NT-proBNP and IFCI in predicting the incidence of a composite endpoint (A) and all causes of death (B) in 1 year.

Discussion

To our knowledge, this is the first study to demonstrate that (1) the FIB-4, SII and IFCI at admission provided good predictability of LVRR after 6 months of GDMT treatment. (2) Lower levels of FIB-4, SII and IFCI were also identified as reduced independent risk indicators for non-LVRR, all-cause death and composite cardiac events. In addition, the IFCI was the strongest predictor of non-LVRR, and an increased IFCI predicted poor prognosis. Furthermore, this study is the first to report the association between the IFCI and LVRR in patients with HFrEF.

In general, LVRR involves restoring chamber geometry and improving chamber contractility, as well as beneficial changes in molecular, metabolic, and extracellular matrix. Increased inflammation has been proposed as a predictor of impaired LVRR because the activation of inflammatory cells and responses results in the secretion of proinflammatory cytokines, further enhancing the inflammatory state in the progression of HF.^{30,31} In this study, the SII could be used to predict LVRR after 6 months of GDMT treatment. After adjusting for confounding factors, increased SII was also identified as an independent risk factor for non-LVRR and was predictive of poor prognosis in patients with HF. The mechanisms of the relationship between the SII and LVRR and adverse prognosis in HF patients remain unclear. A substantial number of neutrophils were found in myocardial tissue in a model of HF, and elevated neutrophils were associated with cardiovascular outcomes, leading to myocardial infarction and cardiac death.^{32–34} Aside from increased levels of neutrophils, increasing platelet levels also contribute to SII elevation. PLTs are related to atherosclerosis, coronary artery disease, cerebrovascular disease, and systemic inflammatory disorders, all of which contribute to the pathogenesis of HF.^{35–37} Furthermore, significant abnormalities caused by HF lead to decreased levels of lymphocytes, resulting in an elevated value of the SII. First, lymphocyte counts in patients with HF were found to be lower than those in the normal population, and lymphopenia serves as an independent predictor of poor cardiovascular outcomes in patients with chronic and advanced HF.^{38,39} A 36-month follow-up study of myocardial infarction found that patients with low lymphocyte counts within 96 hours of admission had an elevated risk of serious cardiovascular events.^{40,41} However, the role of the platelet count in the two formulas was the opposite. We therefore analyzed the correlation between each of the components of the formula and the prognosis of HFrEF. We found that there was a significant correlation and a consistent trend for neutrophil count, ALT and AST, while there was no significant correlation for platelet count. Overall, the SII has a higher predictive value as a biomarker than a single leukocyte subtype indicator due to its ability to reflect the balance of platelets and lymphocytes in the body as well as the overall immune response in patients with HF. Regarding its role as a novel biomarker, using the SII is simple and fast, involving an inexpensive routine blood examination for almost all hospitalized patients. Compared with NT-proBNP, the SII enables more effective identification of high-risk patients as well as the prediction of prognosis without additional cost; it has broad application prospects.

Table 6 The Predicting Ability of FIB-4, SII and IFCI with the 1-Year Prognostic

	Composite Cardiac Endpoint				All Cause Death			
	NT-proBNP	IFCI	FIB4	SII	NT-proBNP	IFCI	FIB4	SII
Cut-off value	2000	39.131	2.033	451.71	2550	67.398	2.088	668.86
AIC	4091.911	4053.446	4089.991	4090.182	2030.205	2008.563	2034.283	2030.009
AUC	0.583	0.645	0.603	0.613	0.573	0.647	0.6	0.637
Sensitivity	0.645	0.839	0.572	0.744	0.608	0.514	0.55	0.601
Specificity	0.539	0.422	0.605	0.471	0.571	0.738	0.623	0.658
NRI	Ref.	0.231(0.035–0.529)	0.094(–0.390–0.365)	–0.029(–0.385–0.319)	Ref.	0.242(0.033–0.448)	–0.158(–0.404–0.381)	0.092(–0.274–0.396)
IDI	Ref.	0.150(0.045–0.254)	0.080(–0.178–0.205)	0.019(–0.127–0.184)	Ref.	0.139(–0.091–0.305)	–0.114(–0.204–0.200)	0.097(–0.095–0.282)

Abbreviations: NT-proBNP, N-terminal prohormone of brain natriuretic peptide; SII, Systemic immune inflammation index; FIB-4, fibrosis-4 index; IFCI, inflammation-fibrosis combined index; AIC, Akaike information criteria; IDI, integrated discrimination improvement; NRI, net reclassification improvement. AUC, area under curves.

HF is caused by cardiac remodeling as a result of cardiac inflammation and fibrosis.⁴² Both cardiac inflammation and fibrosis could be targets of new heart failure therapies.⁴³ In patients with HF, the FIB-4 index increased with NT-pro-BNP and right atrial pressure, and a high FIB-4 was associated with an increase in all-cause mortality in acute HF.^{44–46} Our results indicate that FIB-4 is both a biomarker of LVRR and a predictor of cardiovascular events in HFrEF patients. However, the possible mechanism by which FIB-4 is predictive of prognosis in HF patients has not been fully clarified. Liver dysfunction and cardiac dysfunction are thought to interact mutually. HFrEF often causes liver dysfunction or abnormal liver enzyme levels and leads to systemic venous congestion and arterial perfusion reduction, resulting in cardiac cirrhosis and cardiogenic hypoxic hepatitis.⁴⁷ Dysfunction and fibrosis of the liver increase the risk of heart failure and decrease prodrug transformation into active metabolites (eg, some ACE inhibitors and ARBs, enalapril, fosinopril, and losartan).⁴⁸ This is why some patients cannot tolerate medication treatment or why the effect of the pharmaceutical is poor. A shortage of drug tolerance will result in center-of-gravity failure, triggering a vicious cycle. Additionally, hepatic fibrosis is associated with CVD pathogenesis through different mechanisms, and increased plasma inflammatory mediators play a substantial role. This is one reason why readily accessible markers for liver fibrosis might also be used as indicators for cardiac fibrosis, which is why the evaluation of FIB-4 in this study was recommended.⁴⁹ At the same time, calculating FIB-4 is quick and straightforward, and the FIB-4 results are available immediately.

In a large cohort of patients with HFrEF, this study indicated that an increased IFCI at admission offers good predictability regarding non-LVRR and predicts the risk of all-cause mortality or composite cardiovascular events in patients with HFrEF. It may be used as a promising biomarker. Therefore, the IFCI reflects key processes such as inflammation and cardiac remodeling in patients with HFrEF and has been shown to have incremental prognostic value over NT-proBNP, the gold standard biomarker in HF. This further denotes several different underlying pathophysiological pathways that contribute to HF progression and suggests that the IFCI as a marker provides additional information compared with NT-proBNP.⁵⁰ HF remains a complex disease, but even though IFCI is representative of several pathological conditions, it enables us to elucidate the disease status of HF and its impact on prognosis. Notably, the IFCI exhibits less intraindividual biological variation than NT-proBNP. Therefore, applying a combination of biomarkers would more reliably predict risk at the individual patient level than relying on a single marker.

Study Limitations

First, the single-center, retrospective cohort design was an inherent limitation. Second, after adjusting for well-established predictive indicators, the remaining confounding factors cannot be entirely ruled out because the three groups (low, medium, and high groups) had a wide range of baseline variations in characteristics. Therefore, large-scale prospective randomized studies are needed to further determine the impact of these indices on the LVRR. At the time of study conduction, SGLT2 inhibitor (SGLT2i) therapy and ARN inhibitor (ARNi) therapy were not part of standard GDMT. Treatment of HFrEF with SGLT2i and ARNi has been associated with a reduction in sudden death and improved LVEF and could therefore also affect our results.⁵¹ In the end, the study neglects to evaluate the burden of comorbidity and thromboembolic risk for HFrEF patients.^{52,53}

Conclusion

In a large cohort of patients with HFrEF, this study indicated that an increased inflammation-fibrosis combined index at admission offers good predictability regarding non-LVRR and predicts the risk of all-cause mortality or composite cardiovascular events in patients with HFrEF. It may be used as a promising biomarker that may complement or even outperform traditional markers, such as N-terminal pro-brain natriuretic peptide.

Data Sharing Statement

Data of this study were available from the corresponding author upon request.

Ethics Approval and Statement

This study protocol was approved by the Medical Ethics Committee of the First Affiliated Hospital of Xinjiang Medical University (Approval ID: 20170605-05).

To preserve patient privacy and data confidentiality, patient data have been identified before analysis. All analyses in this retrospective study were performed based on the data from anonymized patients. Due to the retrospective nature of this study, the Ethics Committee of First Affiliated Hospital of Xinjiang Medical University approved the study and determined that written informed consent was not required.

Consent to Participate (Include Appropriate Statements)

Due to the retrospective design of this study, informed consent was not required.

Author Contributions

All authors made a significant contribution to the work reported, whether that is in the conception, study design, execution, acquisition of data, analysis and interpretation, or in all these areas; took part in drafting, revising or critically reviewing the article; gave final approval of the version to be published; have agreed on the journal to which the article has been submitted; and agree to be accountable for all aspects of the work.

Funding

This study was supported by Key R&D Program of Xinjiang Uygur Autonomous Region (2022B03023). The funders had no role in study design, data collection and analysis, preparation, interpretation and publish of the manuscript.

Disclosure

The authors declare that there are no competing interests associated with this manuscript.

References

- McDonagh TA, Metra M, Adamo M, et al. ESC guidelines for the diagnosis and treatment of acute and chronic heart failure. *Eur Heart J*. 2021;42(36):3599–3726. doi:10.1093/eurheartj/ehab368
- Yancy CW, Jessup M, Bozkurt B, et al. ACC/AHA/HFSA focused update of the 2013 ACCF/AHA guideline for the management of heart failure: a report of the American college of cardiology/American heart association task force on clinical practice guidelines and the heart failure society of America. *J Am Coll Cardiol*. 2017;70(6):776–803. doi:10.1016/j.jacc.2017.04.025
- Cescou A, Van Aelst LNL, Baudet M, Cohen Solal A, Logeart D. High body mass index is a predictor of left ventricular reverse remodeling in heart failure with reduced ejection fraction. *ESC Heart Fail*. 2017;4(4):686–689. doi:10.1002/ehf2.12172
- Merlo M, Pyxaras SA, Pinamonti B, Barbati G, Di Lenarda A, Sinagra G. Prevalence and prognostic significance of left ventricular reverse remodeling in dilated cardiomyopathy receiving tailored medical treatment. *J Am Coll Cardiol*. 2011;57(13):1468–1476. doi:10.1016/j.jacc.2010.11.030
- Januzzi JL Jr, Prescott MF, Butler J, et al. Association of change in n-terminal pro-b-type natriuretic peptide following initiation of sacubitril-valsartan treatment with cardiac structure and function in patients with heart failure with reduced ejection fraction. *JAMA*. 2019;322(11):1085–1095. doi:10.1001/jama.2019.12821
- Wang Y, Zhou R, Lu C, Chen Q, Xu T, Li D. Effects of the angiotensin-receptor neprilysin inhibitor on cardiac reverse remodeling: meta-analysis. *J Am Heart Assoc*. 2019;8(13):e012272. doi:10.1161/jaha.119.012272
- Savarese G, Vedin O, D'Amario D, et al. Prevalence and prognostic implications of longitudinal ejection fraction change in heart failure. *JACC Heart Fail*. 2019;7(4):306–317. doi:10.1016/j.jchf.2018.11.019
- Aimo A, Vergaro G, González A, et al. Cardiac remodelling - Part 2: clinical, imaging and laboratory findings. A review from the Study group on biomarkers of the Heart failure association of the European society of cardiology. *Eur J Heart Fail*. 2022;24(6):944–958. doi:10.1002/ejhf.2522
- Hazebroek MR, Moors S, Dennert R, et al. Prognostic Relevance of gene-environment interactions in patients with dilated cardiomyopathy: applying the MOGE(S) Classification. *J Am Coll Cardiol*. 2015;66(12):1313–1323. doi:10.1016/j.jacc.2015.07.023
- Packer M, McMurray JJV. Rapid evidence-based sequencing of foundational drugs for heart failure and a reduced ejection fraction. *Eur J Heart Fail*. 2021;23(6):882–894. doi:10.1002/ejhf.2149
- Dick SA, Epelman S. Chronic heart failure and inflammation: what do we really know? *Circ Res*. 2016;119(1):159–176. doi:10.1161/circresaha.116.308030
- Wang M, Pan W, Xu Y, Zhang J, Wan J, Jiang H. Microglia-mediated neuroinflammation: a potential target for the treatment of cardiovascular diseases. *J Inflamm Res*. 2022;15:3083–3094. doi:10.2147/jir.S350109
- Wang BL, Tian L, Gao XH, et al. Dynamic change of the systemic immune inflammation index predicts the prognosis of patients with hepatocellular carcinoma after curative resection. *Clin Chem Lab Med*. 2016;54(12):1963–1969. doi:10.1515/cclm-2015-1191
- Yang YL, Wu CH, Hsu PF, et al. Systemic immune-inflammation index (SII) predicted clinical outcome in patients with coronary artery disease. *Eur J Clin Invest*. 2020;50(5):e13230. doi:10.1111/eci.13230
- Agus HZ, Kahraman S, Arslan C, et al. Systemic immune-inflammation index predicts mortality in infective endocarditis. *J Saudi Heart Assoc*. 2020;32(1):58–64. doi:10.37616/2212-5043.1010
- Tang Y, Zeng X, Feng Y, et al. Association of systemic immune-inflammation index with short-term mortality of congestive heart failure: a Retrospective Cohort study. *Front Cardiovasc Med*. 2021;8:753133. doi:10.3389/fcvm.2021.753133

17. Yuan M, Ren F, Gao D. The value of sii in predicting the mortality of patients with heart failure. *Dis Markers*. 2022;2022:3455372. doi:10.1155/2022/3455372
18. Shibata N, Kondo T, Kazama S, et al. Impact of predictive value of Fibrosis-4 index in patients hospitalized for acute heart failure. *Int J Cardiol*. 2021;324:90–95. doi:10.1016/j.ijcard.2020.09.056
19. Kawahira M, Tamaki S, Yamada T, et al. Prognostic value of impaired hepato-renal function and liver fibrosis in patients admitted for acute heart failure. *ESC Heart Fail*. 2021;8(2):1274–1283. doi:10.1002/ehf2.13195
20. Takae M, Fujisue K, Yamamoto E, et al. Prognostic significance of liver stiffness assessed by fibrosis-4 index in patients with heart failure. *ESC Heart Fail*. 2021;8(5):3809–3821. doi:10.1002/ehf2.13351
21. Shirakabe A, Okazaki H, Matsushita M, et al. Type III procollagen peptide level can indicate liver dysfunction associated with volume overload in acute heart failure. *ESC Heart Fail*. 2022;9(3):1832–1843. doi:10.1002/ehf2.13878
22. Mann DL. Innate immunity and the failing heart: the cytokine hypothesis revisited. *Circ Res*. 2015;116(7):1254–1268. doi:10.1161/circresaha.116.302317
23. Crespo-Leiro MG, Anker SD, Maggioni AP, et al. European society of cardiology heart failure long-term registry (ESC-HF-LT): 1-year follow-up outcomes and differences across regions. *Eur J Heart Fail*. 2016;18(6):613–625. doi:10.1002/ejhf.566
24. Shah R, Ziegler O, Yeri A, et al. MicroRNAs associated with reverse left ventricular remodeling in humans identify pathways of heart failure progression. *Circ Heart Fail*. 2018;11(2):e004278. doi:10.1161/circheartfailure.117.004278
25. Hellawell JL, Margulies KB. Myocardial reverse remodeling. *Cardiovasc Ther*. 2012;30(3):172–181. doi:10.1111/j.1755-5922.2010.00247.x
26. Lang RM, Bierig M, Devereux RB, et al. Recommendations for chamber quantification: a report from the American society of echocardiography's guidelines and standards committee and the chamber quantification writing group, developed in conjunction with the European Association of Echocardiography, a branch of the European Society of Cardiology. *J Am Soc Echocardiogr*. 2005;18(12):1440–1463. doi:10.1016/j.echo.2005.10.005
27. Sterling RK, Lissen E, Clumeck N, et al. Development of a simple noninvasive index to predict significant fibrosis in patients with HIV/HCV coinfection. *Hepatology*. 2006;43(6):1317–1325. doi:10.1002/hep.21178
28. Hu B, Yang XR, Xu Y, et al. Systemic immune-inflammation index predicts prognosis of patients after curative resection for hepatocellular carcinoma. *Clin Cancer Res*. 2014;20(23):6212–6222. doi:10.1158/1078-0432.Ccr-14-0442
29. Hnat T, Veselka J, Honek J. Left ventricular reverse remodelling and its predictors in non-ischaeamic cardiomyopathy. *ESC Heart Fail*. 2022;9(4):2070–2083. doi:10.1002/ehf2.13939
30. Hanna A, Frangogiannis NG. Inflammatory Cytokines and Chemokines as Therapeutic Targets in Heart Failure. *Cardiovasc Drugs Ther*. 2020;34(6):849–863. doi:10.1007/s10557-020-07071-0
31. Halade GV, Lee DH. Inflammation and resolution signaling in cardiac repair and heart failure. *EBioMedicine*. 2022;79:103992. doi:10.1016/j.ebiom.2022.103992
32. Wang Y, Sano S, Oshima K, et al. Wnt5a-mediated neutrophil recruitment has an obligatory role in pressure overload-induced cardiac dysfunction. *Circulation*. 2019;140(6):487–499. doi:10.1161/circulationaha.118.038820
33. Valiente-Alandi I, Potter SJ, Salvador AM, et al. Inhibiting fibronectin attenuates fibrosis and improves cardiac function in a model of heart failure. *Circulation*. 2018;138(12):1236–1252. doi:10.1161/circulationaha.118.034609
34. Ndumele CE, Coresh J, Lazo M, et al. Obesity, subclinical myocardial injury, and incident heart failure. *JACC Heart Fail*. 2014;2(6):600–607. doi:10.1016/j.jchf.2014.05.017
35. Soydinc S, Turkbeyler IH, Pehlivan Y, et al. Mean platelet volume seems to be a valuable marker in patients with systemic sclerosis. *Inflammation*. 2014;37(1):100–106. doi:10.1007/s10753-013-9716-x
36. Mehta J, Mehta P. Platelet function studies in heart disease. VI. Enhanced platelet aggregate formation activity in congestive heart failure: inhibition by sodium nitroprusside. *Circulation*. 1979;60(3):497–503. doi:10.1161/01.cir.60.3.497
37. Ponikowski P, Voors AA, Anker SD, et al. ESC guidelines for the diagnosis and treatment of acute and chronic heart failure: the Task Force for the diagnosis and treatment of acute and chronic heart failure of the European Society of Cardiology (ESC) developed with the special contribution of the Heart Failure Association (HFA) of the ESC. *Eur Heart J*. 2016;37(27):2129–2200. doi:10.1093/eurheartj/ehw128
38. Charach G, Grosskopf I, Roth A, et al. Usefulness of total lymphocyte count as predictor of outcome in patients with chronic heart failure. *Am J Cardiol*. 2011;107(9):1353–1356. doi:10.1016/j.amjcard.2010.12.049
39. Vaduganathan M, Ambrosy AP, Greene SJ, et al. Predictive value of low relative lymphocyte count in patients hospitalized for heart failure with reduced ejection fraction: insights from the EVEREST trial. *Circ Heart Fail*. 2012;5(6):750–758. doi:10.1161/circheartfailure.112.970525
40. Targher G, Dauriz M, Tavazzi L, et al. Prognostic impact of in-hospital hyperglycemia in hospitalized patients with acute heart failure: results of the IN-HF (Italian Network on Heart Failure) outcome registry. *Int J Cardiol*. 2016;203:587–593. doi:10.1016/j.ijcard.2015.10.207
41. Núñez J, Núñez E, Miñana G, et al. Effectiveness of the relative lymphocyte count to predict one-year mortality in patients with acute heart failure. *Am J Cardiol*. 2011;107(7):1034–1039. doi:10.1016/j.amjcard.2010.11.029
42. Burchfield JS, Xie M, Hill JA. Pathological ventricular remodeling: mechanisms: part 1 of 2. *Circulation*. 2013;128(4):388–400. doi:10.1161/circulationaha.113.001878
43. Bacmeister L, Schwarzl M, Warnke S, et al. Inflammation and fibrosis in murine models of heart failure. *Basic Res Cardiol*. 2019;114(3):19. doi:10.1007/s00395-019-0722-5
44. Nakashima M, Sakuragi S, Miyoshi T, et al. Fibrosis-4 index reflects right ventricular function and prognosis in heart failure with preserved ejection fraction. *ESC Heart Fail*. 2021;8(3):2240–2247. doi:10.1002/ehf2.13317
45. Maeda D, Sakane K, Ito T, Kanzaki Y, Sohmiya K, Hoshiga M. Fibrosis-4 index reflects right-sided filling pressure in patients with heart failure. *Heart Vessels*. 2020;35(3):376–383. doi:10.1007/s00380-019-01505-y
46. Sato Y, Yoshihisa A, Kanno Y, et al. Liver stiffness assessed by Fibrosis-4 index predicts mortality in patients with heart failure. *Open Heart*. 2017;4(1):e000598. doi:10.1136/openhrt-2017-000598
47. Møller S, Bernardi M. Interactions of the heart and the liver. *Eur Heart J*. 2013;34(36):2804–2811. doi:10.1093/eurheartj/ehz246
48. Ouwerkerk W, Voors AA, Anker SD, et al. Determinants and clinical outcome of uptitration of ACE-inhibitors and beta-blockers in patients with heart failure: a prospective European study. *Eur Heart J*. 2017;38(24):1883–1890. doi:10.1093/eurheartj/ehx026
49. Anstee QM, Mantovani A, Tilg H, Targher G. Risk of cardiomyopathy and cardiac arrhythmias in patients with nonalcoholic fatty liver disease. *Nat Rev Gastroenterol Hepatol*. 2018;15(7):425–439. doi:10.1038/s41575-018-0010-0

50. Vickery S, Price CP, John RI, et al. B-type natriuretic peptide (BNP) and amino-terminal proBNP in patients with CKD: relationship to renal function and left ventricular hypertrophy. *Am J Kidney Dis.* 2005;46(4):610–620. doi:10.1053/j.ajkd.2005.06.017
51. McMurray JJV, Solomon SD, Inzucchi SE, et al. Dapagliflozin in patients with heart failure and reduced ejection fraction. *N Engl J Med.* 2019;381(21):1995–2008. doi:10.1056/NEJMoa1911303
52. Wei D, Sun Y, Chen R, Meng Y, Wu W. The Charlson comorbidity index and short-term readmission in patients with heart failure: a retrospective cohort study. *Medicine (Baltimore).* 2023;102(6):e32953. doi:10.1097/md.00000000000032953
53. Sonaglioni A, Lonati C, Rigamonti E, et al. CHA(2)DS(2)-VASc score stratifies mortality risk in heart failure patients aged 75 years and older with and without atrial fibrillation. *Aging Clin Exp Res.* 2022;34(7):1707–1720. doi:10.1007/s40520-022-02107-x

Journal of Inflammation Research

Dovepress

Publish your work in this journal

The Journal of Inflammation Research is an international, peer-reviewed open-access journal that welcomes laboratory and clinical findings on the molecular basis, cell biology and pharmacology of inflammation including original research, reviews, symposium reports, hypothesis formation and commentaries on: acute/chronic inflammation; mediators of inflammation; cellular processes; molecular mechanisms; pharmacology and novel anti-inflammatory drugs; clinical conditions involving inflammation. The manuscript management system is completely online and includes a very quick and fair peer-review system. Visit <http://www.dovepress.com/testimonials.php> to read real quotes from published authors.

Submit your manuscript here: <https://www.dovepress.com/journal-of-inflammation-research-journal>