

# Cerebral cross-perfusion and the circle of Willis: does physiology trump anatomy?

Korana Musicki<sup>1</sup>  
Katherine Victoria Hurst<sup>1,2</sup>  
Zoltán Molnár<sup>3</sup>  
Elizabeth Hardy<sup>4</sup>  
Ashok Handa<sup>1,2</sup>

<sup>1</sup>Department of Vascular Surgery,  
John Radcliffe Hospital, <sup>2</sup>Nuffield

Department of Surgical Sciences,

<sup>3</sup>Department of Physiology, Anatomy  
and Genetics, University of Oxford,

<sup>4</sup>Vascular Studies Unit, John Radcliffe  
Hospital, Oxford, UK

**Introduction:** Cerebral cross-perfusion is essential for ipsilateral brain viability during unilateral insult. Aortic arch and great vessel procedures depend on its function for safe practice, unless adjuncts like shunts are used. This paper assesses the contribution of cerebrovascular anatomy against physiology in determining requisite hemispheric perfusion during carotid endarterectomy (CEA).

**Materials and methods:** A review of shunting requirements for CEAs under locoregional anesthesia (LA) at the John Radcliffe Hospital during 1999–2013 was performed. A PubMed search for “Circle of Willis” was screened for all original articles defining cerebrovascular anatomy by postmortem or angiography.

**Results:** Over 14 years, 1137 CEAs were performed under cervical plexus block; during this period, the departmental standard of practice evolved from exclusively general anesthesia to predominantly LA. CEAs performed under LA during the early phase (1999–2003) had a shunt rate of 15.1%, compared to 20% as predicted by stump pressures alone. However, shunting decreased as higher perioperative systolic pressures were routinely practiced; shunt rates were 8.0% during the intermediate (2004–2007) and 6.4% during the later (2008–2013) phase. By comparison, 25 articles characterizing 6414 brains report an intact circle of Willis in 33–35% of people, with a complete hemi-circle anteriorly (77%) seen more commonly than posteriorly (42%), and 11–16% deficient in both hemi-circles with no cross-flow.

**Conclusion:** Cerebral cross-perfusion is fundamental for safe CEA. Anatomy of the circle of Willis alone does not itself determine adequacy. Physiological mechanisms are important in overriding apparent deficiencies, and these can be manipulated perioperatively. Consequently, only 1 out of 15 patients requires shunting during CEA.

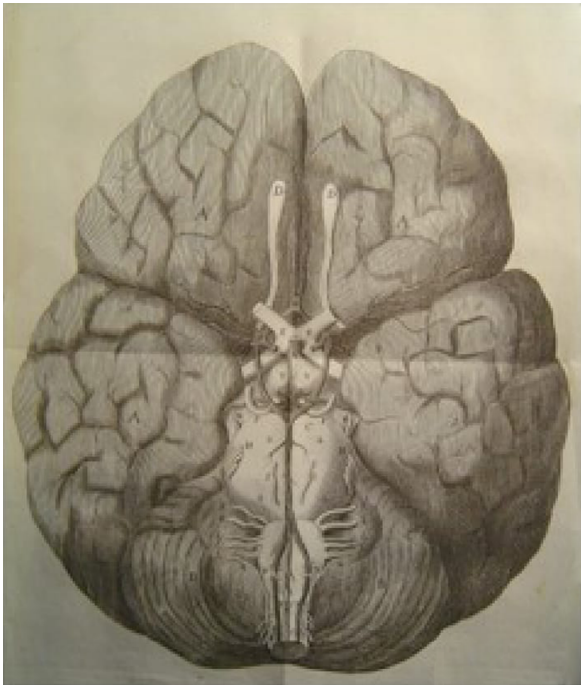
**Keywords:** Circle of Willis, cerebral, cross-perfusion, carotid, shunt, anatomical variation

## Introduction

Cerebral function is of utmost importance to survival, and unsurprisingly, there are multiple overlapping anatomical and physiological mechanisms by which adequate cerebral perfusion is maintained. Cerebral vascular anatomy consequently features many large- and small-scale, seemingly redundant, arterial networks to allow cross-perfusion should any single major vessel occlude, including the well-characterized circle of Willis (Figure 1).<sup>1</sup> However, various anatomical studies, including postmortem dissections and imaging series, indicate that the circle of Willis manifests in complete configuration in less than half the population.<sup>2,3</sup>

Physiological mechanisms appear to have a significant role in maintaining cerebral perfusion, not only by phenomena such as cerebral autoregulation, which allows for

Correspondence: Ashok Handa  
Nuffield Department of Surgical Sciences,  
John Radcliffe Hospital, Oxford OX3  
9DU, UK  
Tel +44 1865 22 1278  
Fax +44 1865 22 1118  
Email Ashok.Handa@nds.ox.ac.uk



**Figure 1** Original illustration of the cerebral arterial circle by Dr Thomas Willis (1664).

**Note:** Reproduced with the permission of the library of St John's College, Oxford.

constant flow over a broad range of systemic mean arterial pressures, but also cerebral cross-perfusion.<sup>4</sup> Logically, the fate of the ipsilateral cerebral cortex during unilateral vascular deficiency depends on the ability of the individual to activate these cerebral cross-perfusion pathways.

Aortic arch and great vessel interventions depend on cerebral anatomical and physiological homeostatic mechanisms for safety, unless adjuncts like shunts can be used. However, preoperative imaging and perioperative monitoring are notoriously poor predictors of patient response during intraoperative manipulation, including carotid cross-clamping during carotid surgery or selective antegrade cerebral perfusion during aortic arch surgery.<sup>5,6</sup>

This study examines the relative contribution of cerebrovascular anatomy and physiology in maintaining adequate hemispheric perfusion, specifically by quantifying the population at risk of poor cerebral cross-perfusion due to anatomical circle of Willis deficiencies, and comparing it to the population that required shunting during carotid cross-clamping.

A secondary outcome of the study is to assess overall shunt rates during carotid endarterectomy (CEA), and in light of this, any consequent implications on surgical training.

## Materials and methods

### Anatomical data

A PubMed search using the keyword "Circle of Willis" was performed. All articles were screened for original research

pieces quantifying human variations of the circle of Willis. For each original paper, mode of assessment, ethnicity of the population and proportions of circle of Willis variants were recorded; specifically, patient populations were stratified according to completeness and deficiencies in both the anterior and posterior hemi-circles.

### Physiological data

An audit of consecutive CEAs performed under locoregional anesthesia (LA) at the John Radcliffe Hospital during 1999–2013 was compiled. Superficial cervical plexus block was applied, and hemodynamic monitoring was by radial arterial line. Carotid bifurcation exposure and endarterectomy were performed by techniques of choice of the consultant vascular surgeon; these included eversion or standard endarterectomy, with or without vein or prosthetic patch anastomotic repair. Unilateral carotid occlusion tolerance was monitored by regular gross neurological assessment, which included patients' recall of their own full name, date of birth and residential address, in addition to contralateral handgrip and ankle plantar flexion power, as well as general agitation. The necessity for shunting was determined perioperatively at the discretion of the consultant vascular surgeon, and typically occurred if clamp intolerance manifested early during the routine 5-min internal carotid artery (ICA) test clamp (prior to arteriotomy), or during the endarterectomy or anastomotic repair.

Over the 14-year period described, there were 3 distinct eras in surgical development. Era 1 (1999–2003) denotes the learning curve for surgeons and anesthetists following the introduction of local anesthetic. Shunts were used for all patients who had neurological deficit during test clamping. In Era 2 (2004–2007), any neurological deficit during test clamping was initially dealt with by raising the systolic pressure and repeating a trial clamp. Only if a residual neurological deficit was present would shunting proceed. In Era 3 (2008–2013), any neurological deficit during trial clamping was responded to with both a raise of systolic pressure and increased arterial oxygenation.

## Results

### Anatomical data

The PubMed search utilizing the keyword "Circle of Willis" yielded 2675 publically available articles; however, only 34 papers described a distinct human population case series that could be assessed. The total publications finally analyzed were reduced to 25 that contained comparable numerical anatomical descriptions, which together reported a total of 6414 individual cerebrovascular anatomies of diverse ethnic backgrounds.

Of 14 postmortem dissection reports, assessing 4393 individual brains, a complete circle of Willis was seen in 35% of cadaveric specimens. It was noted that the complete anterior portion was more common (77%) than a complete posterior portion (42%) (Table 1). Of 11 angiographic studies (computed tomography, magnetic resonance or digital subtraction modalities) examining 2021 vasculatures, a complete circle of Willis was seen in 33% of all scans. Again, a complete anterior portion was observed more commonly (77%) than a complete posterior portion (42%) (Table 2). Overall, the anatomical data indicated that 11% (radiological) to 16% (cadaveric) of the population had deficiencies in both anterior and posterior hemi-circles.

## Physiological data

The John Radcliffe Hospital Department of Vascular Surgery evolved its CEA practice from exclusively general anesthesia (GA) to predominantly LA circa 1999. Over the 14-year study period since LA uptake, 1137 CEAs were performed under cervical plexus block (Table 3). Initial rates of shunting in our unit showed a mean of 15.1% during 1999–2003, following a similar trend to the anatomy data. However, during 2004–2007, a shunt rate of 8.0% was observed, and this further decreased to 6.4% during 2008–2013.

International experience with CEA under LA demonstrates a reported average shunt rate of 15%; however, only a Korean group has managed to reduce it to 4% (Table 4).<sup>7</sup>

## Discussion

Cerebral cross-perfusion is essential in preserving ipsilateral brain survival and function during unilateral vascular

interruption. Various mechanisms have been described including anatomical collaterals<sup>8–11</sup> and physiological alterations,<sup>4</sup> but neither preoperative scanning nor perioperative surrogate physiological cerebral monitoring has been a good predictor of postoperative outcomes.

Anatomical explanations for cross-perfusion have relied on a series of collateral pathways that are deemed essential. First described by Dr Thomas Willis in 1664, the eponymous intracranial circle, loop or polygon as it is variously referred to, has been the benchmark respected by generations of physicians and anatomists. However, despite the perceived importance of this intracranial network, multiple human variations exist, including hypoplastic and aplastic communicating vessels that frequently result in incomplete hemi-circles, with no apparent disadvantages. Perhaps due to the “higher” end organ significance or due to the less individual elements, the anterior circulation tends to be complete in a greater proportion of the population than the posterior circulation.<sup>12–14</sup> Interestingly, 11–16% of the population have no evidence of classic anatomical pathways allowing for cross-brain perfusion.<sup>1,13,15</sup>

Alternative intracranial pathways include the leptomeningeal anastomoses of Heubner and micronetworks of Schmidt and Pfeiffer, which collateralize the ipsilateral anterior circulation only.<sup>16</sup> Supplementary extracranial collateral pathways that can develop include external to internal carotid anastomoses, via the superficial temporal and middle maxillary arteries, to supraorbital and dorsal nasal branches of the ophthalmic artery, respectively. These certainly become important sources of alternate blood flow if hemodynamically significant lesions develop at the ICA origin, as typically

**Table 1** Anatomical data based on postmortem dissections across various mono- and multiethnic groups

Report	Year	Ethnicity	Total	Complete (%)	Anterior (%)	Posterior (%)	Deficient (%)
Papantchev et al <sup>22</sup>	2013	Bulgarian	250	41	86	49	6
Iqbal <sup>12</sup>	2013	Indian	50	60	92	68	0
Hashemi et al <sup>13</sup>	2013	Iranian	200	46	82	53	12
Siddiqi et al <sup>23</sup>	2013	Pakistani	51	41	84	41	16
De Silva et al <sup>24</sup>	2011	Sri Lankan	220	15	52	32	31
Manninen et al <sup>25</sup>	2009	Finnish	92	21	76	39	5
Kapoor et al <sup>11</sup>	2008	Indian	1000	66	94	72	8
Ardakani et al <sup>14</sup>	2008	Iranian	30	43	100	43	0
Eftekhari et al <sup>15</sup>	2006	Iranian	92	32	88	33	12
el Khamlichi et al <sup>9</sup>	1985	Moroccan	100	18	60	31	26
Lazorthes and Gouazé <sup>26</sup>	1979	French	200	15	58	21	37
Fisher et al <sup>27</sup>	1965	USA	414	5	58	6	38
Riggs and Rupp <sup>28</sup>	1963	USA	994	19	52	32	35
Fawcett and Blachford <sup>10</sup>	1905	UK	700	73	100	73	0
Total	14		4393				
Mean				35	77	42	16

**Notes:** The circle of Willis configurations were designated as “complete” (if no segments were aplastic or hypoplastic), “anterior” (if no segments were aplastic or hypoplastic in the anterior portion only), “posterior” (if no segments were aplastic or hypoplastic in the posterior portion only) or “deficient” (if segments were aplastic or hypoplastic in both).

**Table 2** Anatomical data based on radiological studies across various mono- and multiethnic groups

Report	Year	Ethnicity	Total	Complete (%)	Anterior (%)	Posterior (%)	Deficient (%)	Mode
Papantchev et al <sup>22</sup>	2013	Bulgarian	250	41	86	49	6	CTA
Pennekamp et al <sup>21</sup>	2013	Dutch	140	9	80	15	14	CTA
Pennekamp et al <sup>21</sup>	2013	Dutch	284	9	83	32	0	MRA
Cho et al <sup>7</sup>	2013	Korean	45	29	60	60	9	CTA
Klimek-Piotrowska et al <sup>29</sup>	2013	Polish	250	17	47	27	43	CTA
Chuang et al <sup>30</sup>	2013	Taiwanese	64	33	81	52	0	CTA
Li et al <sup>31</sup>	2011	Chinese	160	27	79	31	17	CTA
Cavestro et al <sup>8</sup>	2011	Italian	429	67	88	75	4	MRA
Urbanski et al <sup>32</sup>	2008	German	99	60	N/A	N/A	9	CTA
Waaïjer et al <sup>33</sup>	2007	Dutch	182	24	80	29	15	CTA
Macchi et al <sup>34</sup>	2002	Italian	118	47	90	48	8	MRA
Total	11		2021					
Mean				33	77	42	11	

**Notes:** These include CTA, MRA and digital subtraction angiography. The circle of Willis configurations were designated as "complete" (if no segments were aplastic or hypoplastic), "anterior" (if no segments were aplastic or hypoplastic in the anterior portion only), "posterior" (if no segments were aplastic or hypoplastic in the posterior portion only) or "deficient" (if segments were aplastic or hypoplastic in both).

**Abbreviations:** CTA, computed tomography angiography; MRA, magnetic resonance angiography; N/A, not available.

**Table 3** Physiological data based on the John Radcliffe Hospital experience of carotid endarterectomy under locoregional anesthesia over specific time periods

Year	Ethnicity	Total (n)	Shunt (n)	Shunt (%)
1999–2003	Mixed UK residents	199	30	15.1
2004–2007	Mixed UK residents	363	29	8.0
2008–2013	Mixed UK residents	575	37	6.4
Total		1137		

**Table 4** Physiological data based on the perioperative experience of carotid endarterectomy under locoregional anesthesia across various vascular surgical units and ethnic groups

Report	Year	Ethnicity	Total (n)	Shunt (n)	Shunt (%)
Pennekamp et al <sup>21</sup>	2013	Dutch	431	65	15
Cho et al <sup>7</sup>	2013	Korean	45	2	4
Lee et al <sup>20</sup>	2004	Korean	117	23	20
Kim et al <sup>19</sup>	2002	Korean	67	14	21
Total	4		660		
Mean				26	15

occurs due to atherosclerotic disease, although they may not be able to compensate during acute occlusion.

Perioperative proxy cerebral physiological monitoring during GA has been notoriously hampered by interpretation inaccuracies. Stump pressure assessment is performed following clamping the common carotid and external carotid arteries by needling the ICA connected to an arterial transducer; arbitrarily, pressures above 50 mmHg are deemed to be adequate. Using this technique, shunt rates are around 20%; however, false positives are 1.45%, and negatives are 70.4%.<sup>5</sup> Transcranial Doppler is performed by setting the probe to monitor the flow in the

ipsilateral middle cerebral artery and monitoring for changes in peak systolic velocity. Using this technique, shunt rates are 11%; however, false positives are 2%, and negatives are 29%.<sup>6</sup> Electroencephalography with somatosensory evoked potential monitoring requires up to 16 leads to monitor changes in background brain electrical activity. Using this technique, shunt rates are around 6%; however, false positives are approximately 1%, and negatives are up to 40.6%.<sup>5</sup> Due to the complexities and inaccuracies of these techniques, when performing CEA under GA, the surgical community is divided into the majority routine-shunters and minority selective-shunters, the latter of which may use any of the above techniques with a clinical assessment of strong pulsatile backbleeding.

The gold standard for cerebral hemispheric tolerance of unilateral carotid occlusion is a neurological assessment.<sup>17</sup> This can easily be performed if the procedure is done under LA and with the application of a hemostatic clamp or an occlusive balloon at the ICA origin. Certainly, the initial John Radcliffe Hospital experience with shunt rates of 15.1% on average seemed to appropriately reflect the anatomical data of doubly deficient circle of Willis variants at 11–16%. However, with physiological manipulation, the shunt rates have progressively decreased to 6.4% despite the population group remaining the same. This is mostly attributed to the deliberate increase in mean arterial pressures during cross-clamping; many patients will reflexively increase their own systemic blood pressure through the process of autoregulation; however, some require additional support, typically with addition of boluses of metaraminol.

The latest Vascular Society Quality Improvement Program (VSQIP) report 2015 shows that the John Radcliffe Hospital has performed 260 CEAs over a 3-year period, with an overall



stroke and death rate of 2.1%, despite a 6.4% shunt rate. This is well within the top decile of outcomes in the UK.<sup>18</sup>

The experience and physiological data, with respect to CEA under LA, have also been published by other units with various results. The Korean experience appears to be similar, with initial publications reporting shunt rates of 21% in 67 patients<sup>19</sup> and 20% in 117 patients,<sup>20</sup> while more contemporary articles report shunt rates as low as 4% in 45 patients.<sup>7</sup> However, the Dutch experience remains more conservative, with shunt rates remaining at 15% in 431 patients.<sup>21</sup>

Cerebral cross-perfusion is fundamental for safe completion of CEA. Anatomy of the circle of Willis alone does not itself determine adequacy. Physiological mechanisms are important in overriding apparent deficiencies, and these can be manipulated perioperatively. With such measures, only 1 in every 15 patients may require shunting during CEA, and this could have implications for the training of future vascular surgeons.

## Acknowledgments

The authors would like to thank the vascular sonographers K Bond, R Davies and A Lehmann, and the vascular surgeons J Collin, C Darby, A Halliday, L Hands, T Magee, J Perkins, P Rutter and E Sideso for their assistance.

## Disclosure

The authors report no conflicts of interest in this work.

## References

1. Vrselja Z, Brkic H, Mrdenovic S, Radic R, Curic G. Function of circle of Willis. *J Cereb Blood Flow Metab*. 2014;34(4):578–584.
2. Klimek-Piotrowska W, Rybicka M, Wojnarska A, Wójtowicz A, Koziej M, Hołda MK. A multitude of variations in the configuration of the circle of Willis: an autopsy study. *Anat Sci Int*. 2016;91(4):325–333.
3. Macchi C, Catini C, Federico C, et al. Magnetic resonance angiographic evaluation of *circulus arteriosus cerebri* (circle of Willis): a morphologic study in 100 human healthy subjects. *Ital J Anat Embryol*. 1996;101(2):115–123.
4. Stoneham MD, Thompson JP. Arterial pressure management and carotid endarterectomy. *Br J Anaesth*. 2009;102(4):442–452.
5. Hans SS, Jareunpoon O. Prospective evaluation of electroencephalography, carotid artery stump pressure, and neurologic changes during 314 consecutive carotid endarterectomies performed in awake patients. *J Vasc Surg*. 2007;45(3):511–515.
6. Cao P, Giordano G, Zannetti S, et al. Transcranial Doppler monitoring during carotid endarterectomy: is it appropriate for selecting patients in need of a shunt? *J Vasc Surg*. 1997;26(6):973–979; discussion 979–980.
7. Cho J, Lee KK, Yun WS, Kim HK, Hwang YH, Huh S. Selective shunt during carotid endarterectomy using routine awake test with respect to a lower shunt rate. *J Korean Surg Soc*. 2013;84(4):238–244.
8. Cavestro C, Richetta L, L'episcopo MR, Pedemonte E, Duca S, Di Pietrantoni C. Anatomical variants of the circle of Willis and brain lesions in migraineurs. *Can J Neurol Sci*. 2011;38(3):494–499.
9. el Khamlichi A, Azouzi M, Bellakhdar F, et al. Configuration anatomique du polygone de Willis de l'adulte, étudié par les techniques d'injection. A propos de 100 cerveaux. [Anatomic configuration of the circle of Willis in the adult studied by injection techniques. Apropos of 100 brains]. *Neurochirurgie*. 1985;31(4):287–293. French [with English abstract].
10. Fawcett E, Blachford JV. The Circle of Willis: an examination of 700 specimens. *J Anat Physiol*. 1905;40(Pt 1):63.2–70.
11. Kapoor K, Singh B, Dewan LI. Variations in the configuration of the circle of Willis. *Anat Sci Int*. 2008;83(2):96–106.
12. Iqbal S. A comprehensive study of the anatomical variations of the circle of Willis in adult human brains. *J Clin Diagn Res*. 2013;7(11):2423–2427.
13. Hashemi SM, Mahmoodi R, Amirjamshidi A. Variations in the anatomy of the Willis' circle: a 3-year cross-sectional study from Iran (2006–2009). Are the distributions of variations of circle of Willis different in different populations? Result of an anatomical study and review of literature. *Surg Neurol Int*. 2013;4:65.
14. Ardakani SK, Dadmehr M, Nejat F, et al. The cerebral arterial circle (*circulus arteriosus cerebri*): an anatomical study in fetus and infant samples. *Pediatr Neurosurg*. 2008;44(5):388–392.
15. Eftekhari B, Dadmehr M, Ansari S, Ghodsi M, Nazparvar B, Ketabchi E. Are the distributions of variations of circle of Willis different in different populations? – results of an anatomical study and review of literature. *BMC Neurol*. 2006;6:22.
16. Gorczyca W, Mohr G. Microvascular anatomy of Heubner's recurrent artery. *Neurol Res*. 1987;9(4):259–264.
17. Silbert BS, Koumoundouros E, Davies MJ, Cronin KD. Comparison of the processed electroencephalogram and awake neurological assessment during carotid endarterectomy. *Anaesth Intensive Care*. 1989;17(3):298–304.
18. Vascular Society. Reports. Available from: <https://www.vsqip.org.uk/reports/>. Accessed March, 2017.
19. Kim GE, Cho YP, Lim SM. The anatomy of the circle of Willis as a predictive factor for intra-operative cerebral ischemia (shunt need) during carotid endarterectomy. *Neurol Res*. 2002;24(3):237–240.
20. Lee JH, Choi CG, Kim DK, Kim GE, Lee HK, Suh DC. Relationship between circle of Willis morphology on 3D time-of-flight MR angiograms and transient ischemia during vascular clamping of the internal carotid artery during carotid endarterectomy. *AJNR Am J Neuroradiol*. 2004;25(4):558–564.
21. Pennekamp CW, van Laar PJ, Hendrikse J, et al. Incompleteness of the circle of Willis is related to EEG-based shunting during carotid endarterectomy. *Eur J Vasc Endovasc Surg*. 2013;46(6):631–637.
22. Papantchev V, Stoinova V, Aleksandrov A, et al. The role of Willis circle variations during unilateral selective cerebral perfusion: a study of 500 circles. *Eur J Cardiothorac Surg*. 2013;44(4):743–753.
23. Siddiqi H, Tahir M, Lone KP. Variations in cerebral arterial circle of Willis in adult Pakistani population. *J Coll Physicians Surg Pak*. 2013;23(9):615–619.
24. De Silva KR, Silva R, Gunasekera WS, Jayasekera RW. Prevalence of typical circle of Willis and the variation in the anterior communicating artery: a study of a Sri Lankan population. *Ann Indian Acad Neurol*. 2009;12(3):157–161.
25. Manninen H, Mäkinen K, Vanninen R, Ronkainen A, Tulla H. How often does an incomplete circle of Willis predispose to cerebral ischemia during closure of carotid artery? Postmortem and clinical imaging studies. *Acta Neurochir (Wien)*. 2009;151(9):1099–1105.
26. Lazorthes G, Gouazé A. Conception fonctionnelle du polygone de Willis [Functional concept of the circle of Willis]. *C R Assoc Anat*. 1970;149:826–836. French [with English abstract].
27. Fisher ER, Davis JS, Lemmen LJ. Anomalous reduplication of the circle of Willis. *J Neurosurg*. 1959;16(3):331–336.
28. Riggs HE, Rupp C. Variation in form of circle of Willis. The relation of the variations to collateral circulation: anatomic analysis. *Arch Neurol*. 1963;8:8–14.
29. Klimek-Piotrowska W, Kopeć M, Kochana M, et al. Configurations of the circle of Willis: a computed tomography angiography based study on a Polish population. *Folia Morphol (Warsz)*. 2013;72(4):293–299.
30. Chuang YM, Chan L, Lai YJ, et al. Configuration of the circle of Willis is associated with less symptomatic intracerebral hemorrhage in ischemic stroke patients treated with intravenous thrombolysis. *J Crit Care*. 2013;28(2):166–172.

31. Li Q, Li J, Lv F, Li K, Luo T, Xie P. A multidetector CT angiography study of variations in the circle of Willis in a Chinese population. *J Clin Neurosci*. 2011;18(3):379–383.
32. Urbanski PP, Lenos A, Blume JC, et al. Does anatomical completeness of the circle of Willis correlate with sufficient cross-perfusion during unilateral cerebral perfusion? *Eur J Cardiothorac Surg*. 2008;33(3):402–408.
33. Waaijer A, van Leeuwen MS, van der Worp HB, Verhagen HJ, Mali WP, Velthuis BK. Anatomic variations in the circle of Willis in patients with symptomatic carotid artery stenosis assessed with multidetector row CT angiography. *Cerebrovasc Dis*. 2007;23(4):267–274.
34. Macchi C, Lova RM, Miniati B, et al. The circle of Willis in healthy older persons. *J Cardiovasc Surg (Torino)*. 2002;43(6):887–890.

### Journal of Vascular Diagnostics and Interventions

Dovepress

#### Publish your work in this journal

The Journal of Vascular Diagnostics and Interventions is an international, peer-reviewed journal of diagnostics, focusing on non invasive vascular investigation methods involved in the evaluation of vascular diseases. The journal is committed to the rapid publication in the fields of vascular diseases. Original research, review, case reports, expert

opinion and commentaries are all considered for publication. The manuscript management system is completely online and includes a very quick and fair peer-review system, which is all easy to use. Visit <http://www.dovepress.com/testimonials.php> to read real quotes from published authors.

Submit your manuscript here: <https://www.dovepress.com/journal-of-vascular-diagnostics-journal>