

Significance of prolonged QTc in acute exacerbations of COPD requiring hospitalization

Oliver Van Oekelen^{1,*}
 Kristina Vermeersch^{1,2,*}
 Stephanie Everaerts^{1,2}
 Bert Vandenberg^{3,4}
 Rik Willems^{3,4}
 Wim Janssens^{1,2}

¹Department of Respiratory Diseases, University Hospitals Leuven, Leuven, Belgium; ²Department of Chronic Diseases, Metabolism and Ageing, Laboratory of Respiratory Diseases, KU Leuven, Leuven, Belgium;

³Department of Cardiology, University Hospitals Leuven, Leuven, Belgium;

⁴Department of Cardiovascular Sciences, KU Leuven, Leuven, Belgium

*These authors contributed equally to this work

Background: A prolonged QT interval is associated with increased risk of Torsade de Pointes and cardiovascular death. The prevalence and clinical relevance of QT prolongation in acute exacerbations of COPD (AECOPD), with high risk for cardiac morbidity and mortality, is currently unclear.

Methods: A dual cross-sectional study strategy was therefore designed. A retrospective study evaluated 140 patients with an AECOPD requiring hospitalization, half of which had prolonged QTc on the admission ECG. Univariate and multivariate analyses were conducted to determine associated factors; Kaplan–Meier and Cox regression analyses to assess prognostic significance. A prospective study evaluated 180 pulmonary patients with acute respiratory problems requiring hospitalization, to determine whether a prolonged QTc at admission represents an AECOPD-specific finding and to investigate the change in QTc-duration during hospitalization.

Results: Retrospectively, hypokalemia, cardiac troponin T and conductance abnormalities on ECG were significantly and independently associated with QTc prolongation. A prolonged QTc was associated with increased all-cause mortality (HR 2.698 (95% CI 1.032–7.055), $p=0.043$), however, this association was no longer significant when corrected for age, FEV₁ and cardiac troponin T. Prospectively, QTc prolongation was observed in 1/3 of the patients diagnosed with either an AECOPD, lung cancer, pulmonary infection or miscellaneous acute pulmonary disease, and was not more prevalent in AECOPD. The QTc-duration decreased significantly during hospitalization in patients with and without COPD.

Conclusion: A prolonged QTc is a marker of underlying cardiovascular disease during an AECOPD. It is not COPD-specific, but a common finding during the acute phase of a pulmonary disease requiring urgent hospital admission.

Keywords: COPD, acute exacerbation, cardiovascular morbidity, prolonged QT interval, ECG, Bazett

Introduction

COPD is a major health concern worldwide¹ and is associated with significant morbidity and mortality.^{2,3} The disease is characterized by worsening airflow obstruction resulting in progressive breathlessness, and is complicated by the occurrence of acute exacerbations of COPD (AECOPD). These periods of increased respiratory symptoms beyond the normal day-to-day variations may result in hospitalization, respiratory failure and death.^{4,5} A recent study found a 4-year mortality rate of 45% after discharge and up to 10% in-hospital mortality in patients presenting with an AECOPD.^{6–8}

As a complex systemic disease associated with multiple chronic conditions, many of these patients are more likely to die from comorbidity than from COPD itself.^{9,10} It is well established that patients with impaired pulmonary function due to COPD have an increased risk of cardiovascular disease,^{11–13} and there exists ample evidence of higher prevalence and incidence of hospitalization for major cardiovascular events.^{14,15}

Correspondence: Wim Janssens
 Department of Chronic Diseases,
 Metabolism and Ageing, Laboratory
 of Respiratory Diseases, KU Leuven,
 Herestraat 49, O&NI, box 706
 B-3000 Leuven, Belgium
 Tel +32 16 34 6812
 Fax +32 16 34 6803
 Email wim.janssens@kuleuven.be

In case of an AECOPD, patients experience increased bronchoconstriction and mucus production, potentially resulting in hypoxemia and increased heart rate. These events correspond to periods of supplementary cardiovascular stress, potentially resulting in myocardial damage or even heart failure, reflected by the release of cardiac-specific troponin and natriuretic peptides, respectively. Numerous studies have investigated both biomarkers in stable COPD,¹⁶ as well as AECOPD,^{17–19} resulting in a few systematic reviews and meta-analyses.^{20,21} Although results are not always comparable due to methodological heterogeneity, in general they indicate that elevation of one or both biomarkers is fairly common and corresponds to a strong and independent prognostic factor for mortality, in hospital and after discharge.

Alongside these biomarkers, electrocardiography serves as an important tool to investigate the cardiovascular effects of an AECOPD. It is a non-invasive and readily available procedure that carries important information concerning cardiac disease (eg, arrhythmias, ischemia, and conduction abnormalities) and its prognosis. The significance of a prolonged QT interval, a surrogate marker for the risk of malignant ventricular arrhythmias (eg, Torsade de Pointes) and sudden cardiac death, is under investigation in a number of cardiopulmonary diseases. For instance, it was recently shown to be an independent predictor of worse clinical outcomes in pulmonary hypertension.²² Rigorous studies in patients with COPD, with coexisting cardiovascular risk factors and polypharmacologic treatment, are currently lacking. Findings are limited and conflicting,^{23–25} emphasizing the need for further investigation on the role of electrocardiogram (ECG) recording in the monitoring of patients with COPD.

The aim of this study was to provide insight into the clinical relevance of QT prolongation in a COPD subpopulation at high risk for cardiac morbidity and mortality. We therefore evaluated the patient characteristics and prognostic significance of a prolonged QT interval corrected according to Bazett's formula (QTc) in patients hospitalized for an AECOPD in a retrospective patient sample. In a separate prospective cohort, we also investigated whether prolongation of the QT interval is specific for patients hospitalized for an AECOPD compared to admissions for other acute respiratory reasons that have less association with cardiovascular disease.

Methods

Study design and population

This study was conducted in accordance with the amended Declaration of Helsinki. The study protocol was approved by the local ethics committee (Commissie Medische Ethiek UZ-KU Leuven, s58766) for which obtaining

informed consent was waived given the non-interventional, observational design of the protocol.

First, we conducted a retrospective analysis in a cohort of 140 patients with an AECOPD requiring hospitalization. The study population was derived from an existing database comprising patients with COPD²⁶ who were screened for eligibility in the Belgian trial with Azithromycin for acute COPD Exacerbations requiring hospitalization (BACE) (NCT02135354), a randomized placebo-controlled trial investigating long-term azithromycin for the prevention of AECOPD.²⁷ Our clinical cohort consisted of 70 patients who were considered not eligible based on a prolonged QTc on the admission ECG. They were selected as the first 70 in the same time window as the first 70 enrolled patients (who per protocol did not have QTc prolongation). All patients presented at the emergency department of the University Hospital Gasthuisberg (Leuven, Belgium) between August 2014 and September 2015.

Second, we outlined a prospective, non-interventional study. The clinical cohort consisted of 180 pulmonary patients who presented at the same emergency department with acute respiratory problems requiring hospitalization (168 unique patients) between December 2015 and February 2016. These patients were grouped based on the main admission diagnosis.

Clinical measurements

For both studies, positioned in clinical routine, available variables relating to the patient's demographics, lung disease, comorbidity, concomitant respiratory, cardiovascular and QT-prolonging medication, and admission laboratory, ECG and chest X-ray (CXR) were collected. The presence of cardiovascular disease (yes/no), the Charlson²⁸ and COPD index (Table 1) were used to score comorbidity. The following was considered evidence for cardiovascular disease in patients aged ≥ 40 years: any 1 of coronary artery disease, peripheral vascular disease, stroke, myocardial infarction and

Table 1 COPD comorbidity index*

Cardiovascular disease	0/1	Musculoskeletal disease	0/1
Ischemic heart disease		Anemia	
Heart failure		Osteoporosis	
Stroke		Muscle weakness	
Peripheral vascular disease		Cachexia	
Metabolic disease	0/1	Psychological disease	0/1
Diabetes		Anxiety	
Obstructive sleep apnea syndrome		Depression	
Metabolic syndrome		Oncologic disease	0/1

Note: *The COPD comorbidity index score (maximum 5) is the sum of the scores accounted to each category, which is 1 if the patient is diagnosed with at least one of the diseases belonging to that category.

diabetes with organ disease; in patients aged ≥ 60 years: any 2 of hypercholesterolemia, hypertension, diabetes and peripheral vascular disease. Laboratory variables at admission included hypokalemia ($K^+ < 3.0$ mmol/L), hypomagnesemia ($Mg^{2+} < 0.5$ mmol/L), cardiac troponin T (cTnT, $\geq 0.014/0.014-0.052/\geq 0.052$ ng/mL – Elecsys Troponin T hs assay, 13 ng/L 10% CV and 14 ng/L 99% URL; Roche Diagnostics, Mannheim, Germany), C-reactive protein and hypoxemia and respiratory acidosis determined through arterial blood gas analysis. Length of stay and total all-cause mortality were considered as outcome measures. Standard 12-lead resting ECGs (MAC-series 5000 and up, Marquette, GE Healthcare, Chicago, IL, USA – 25 mm/s paper speed, 10 mm/mV amplitude, 250 Hz sampling rate) were taken and inspected manually. Automated QTc values were originally calculated according to Bazett's formula (correcting the QT interval to a value predicted at a heart rate of 60 bpm, $QTc = QT/\sqrt{RR}$ [RR interval=60/heart rate]) representing the standard practice at our institution for the period in which patients were recruited. Where mentioned, the Fridericia formula was later applied to the collected data ($QTcF = QT/\sqrt[3]{RR}$, QT interval corrected according to Fridericia's formula). Predefined cutoff criteria, ie, >450 msec for male and >470 msec for female²⁹ were used to evaluate QTc prolongation.

In the prospective study, we did not interfere with the course of clinical investigations during admission. We did, however, signal the presence of QTc prolongation to the treating physicians for them to decide freely whether a control ECG would be warranted.

Statistical analyses

Statistical analyses were performed using SPSS v20 (IBM Corporation, Armonk, NY, USA) and R v3.1.0 (R Core Team, Vienna, Austria). Two-sided *p*-values < 0.05 were considered statistically significant.

Retrospective data

Continuous/ordinal data were compared using Mann–Whitney–Wilcoxon test, and categorical data were compared using Fisher's exact test. For the multivariate logistic regression, potential meaningful variables were retained based on their significance in the univariate comparison. Age, sex and body mass index (BMI) were kept as covariates in all models. A stepwise approach was used starting from a full multivariate model from which variables were removed based on the Akaike information criterion. Using the mice package in R,³⁰ missing values were added for cTnT to allow for more robust model building. Kaplan–Meier and Cox regression

analyses were conducted to assess survival. The latter was repeated with correction for age, forced expiratory volume in 1 second (FEV_1) and cTnT. The study period was from hospital admission until death or December 31, 2015.

Prospective data

Continuous/ordinal data were compared using Kruskal–Wallis test, and categorical data were compared using Fisher's exact test. *p*-values were estimated via Monte Carlo simulation with 5,000 replicates. McNemar and paired Mann–Whitney–Wilcoxon test assessed the change in QTc duration during hospitalization.

Results

Retrospective analysis – patient characteristics

The characteristics of the patients hospitalized for an AECOPD, according to whether they had prolonged QTc at admission, are summarized in Table 2.

Patients with prolonged QTc were older, had a higher BMI and did not present with worse COPD. They had more severe (cardiovascular) comorbidity, as proven by the significantly higher scores for the Charlson and COPD comorbidity indices, and the presence of cardiovascular disease (Figure 1). In particular, there was significantly more congestive heart failure ($p=0.002$), diabetes ($p=0.006$) and overall cardiovascular disease ($p=0.010$) (data not shown). There was no significant difference in the use of cardiovascular and QT-prolonging medication in general, neither when looking at the different subclasses separately (data not shown). The distribution of cTnT values was significantly different with higher values in patients with prolonged QTc (Figure 2). The ECG-related variables showed that prolonged QTc was associated with increasing heart rate, and rhythm and conductance irregularities were significantly more prevalent. Extrasystoles ($p=0.075$), left ($p=0.097$) and right ($p=0.021$) bundle branch block were the most noteworthy (data not shown). Severely prolonged QTc (>500 msec) was documented in 17.1%. The CXR of patients with prolonged QTc showed significantly more often cardiomegaly and pleural fluid. There was no difference in length of stay, but there was a (non-significant) trend toward higher all-cause mortality in patients with prolonged QTc. Of all patients who died during follow-up, 16.6% had a prolonged QTc >500 msec.

Determinants of prolonged QTc

A multivariate logistic regression model was fitted to gain insight into the determinants of prolonged QTc in patients

Table 2 Characteristics of patients hospitalized for an AECOPD, according to prolonged QTc status on the admission ECG*

	Patients with prolonged QTc		Patients without prolonged QTc		OR (95% CI)	p-value
	n=70		n=70			
Demographics						
Age (years)	77	[12]	68	[16]		<0.001
Sex (F)	17	(12)	40	(28)	0.31 (0.13–0.72)	0.005
BMI (kg/m ²)	26	[8]	24	[8]		0.039
Obesity (BMI ≥30 kg/m ²)	27	(19)	17	(12)	1.79 (0.74–4.48)	0.222
Lung disease						
GOLD stage (A/B/C/D)	(6–12–15–37)		(3–9–9–49)			0.212
FEV ₁ (%)	45	[19]	40	[20]		0.088
mMRC (0–4)	2	[2]	2	[1]		0.137
Current smoker	33	(23)	34	(24)	0.94 (0.44–2.01)	1
Number of pack-years (years)	40	[30]	41	[29]		0.503
O ₂ dependent	20	(14)	15	(11)	1.34 (0.51–3.56)	0.660
Comorbidity						
History of sudden death	0	(0)	4	(3)	0.00 (0.00–2.40)	0.245
Cardiovascular disease	66	(46)	47	(33)	2.14 (1.03–4.50)	0.040
Charlson comorbidity index	3	[2]	2	[2]		0.034
COPD comorbidity index	2	[2]	2	[1]		0.021
Concomitant medication						
Cardiovascular medication	81	(57)	77	(54)	1.30 (0.53–3.23)	0.677
QT-prolonging medication	34	(24)	43	(30)	0.70 (0.33–1.46)	0.385
Blood values						
Hypokalemia	9	(6)	2	(1)	6.40 (0.75–301.32)	0.116
Hypomagnesemia	7	(1/14)	0	(0/15)	+∞ (0.03–+∞)	0.483
Cardiac troponin T (ng/mL) (≤0.014/0.014–0.052/≥0.052)	(11–35–11) (57/70)		(28–14–4) (46/70)			<0.001
Elevated CRP	77	(54)	66	(46)	1.75 (0.79–4.00)	0.190
Hypoxemia	33	(23)	51	(34/67)	0.48 (0.22–1.00)	0.039
Respiratory acidosis	7	(5)	12	(5/67)	0.57 (0.14–2.10)	0.392
ECG						
Heart rate (bpm)	95	[27]	84	[21]		0.009
QTc duration (msec)	472	[25]	428	[26]		<0.001
QTc >500 msec	17	(12)	–	–	–	–
QTcF duration (msec)	444	[25]	406	[16]		<0.001
Prolonged QTcF	36	(25)	–	–	–	–
QTcF >500 msec	9	(6)	–	–	–	–
ECG normal rhythm	81	(57)	94	(66)	0.27 (0.06–0.93)	0.036
ECG normal conductance	44	(31)	86	(60)	0.13 (0.05–0.32)	<0.001
ECG normal repolarization	77	(54)	86	(60)	0.56 (0.21–1.46)	0.277
ECG infarction signs	20	(14)	19	(13)	1.10 (0.43–2.78)	1
2nd ECG taken	46	(32)	93	(65)	0.07 (0.02–0.19)	<0.001
2nd ECG heart rate (bpm)	88	[32]	84	[23]		0.583
2nd ECG QTc duration (msec)	464	[33]	423	[28]		<0.001
2nd ECG normal rhythm	78	(25/32)	97	(63/65)	0.12 (0.01–0.67)	0.005
2nd ECG normal conductance	28	(9/32)	85	(55/65)	0.07 (0.02–0.22)	<0.001
2nd ECG normal repolarization	75	(24/32)	83	(54/65)	0.61 (0.20–2.00)	0.417
2nd ECG infarction signs	16	(5/32)	22	(14/65)	0.68 (0.17–2.26)	0.593
CXR						
CXR abnormal	76	(53)	66	(46)	1.62 (0.73–3.65)	0.265
CXR cardiomegaly	51	(27/53)	24	(11/46)	3.26 (1.29–8.71)	0.007
CXR consolidation	30	(16/53)	33	(15/46)	0.89 (0.35–2.29)	0.831
CXR pleural fluid	30	(16/53)	7	(3/46)	6.10 (1.57–35.16)	0.004
CXR other	34	(18/53)	70	(32/46)	0.23 (0.09–0.57)	0.001
Outcome						
Length of stay (days)	8	[6]	9	[4]		0.417
Mortality	20	(14)	9	(6)	2.65 (0.88–9.00)	0.089
Mortality for QTc >500 msec	17	(2)	–	–	–	–

Note: *Values are presented as percentage (n) or median [interquartile range].

Abbreviations: AECOPD, acute exacerbation of COPD; QTc, QT interval corrected according to Bazett's formula; ECG, electrocardiogram; BMI, body mass index; GOLD, Global Initiative for Chronic Obstructive Lung Disease; FEV₁, forced expiratory volume in 1 second; mMRC, modified Medical Research Council; CRP, C-reactive protein; QTcF, QT interval corrected according to Fridericia's formula; CXR, chest X-ray.

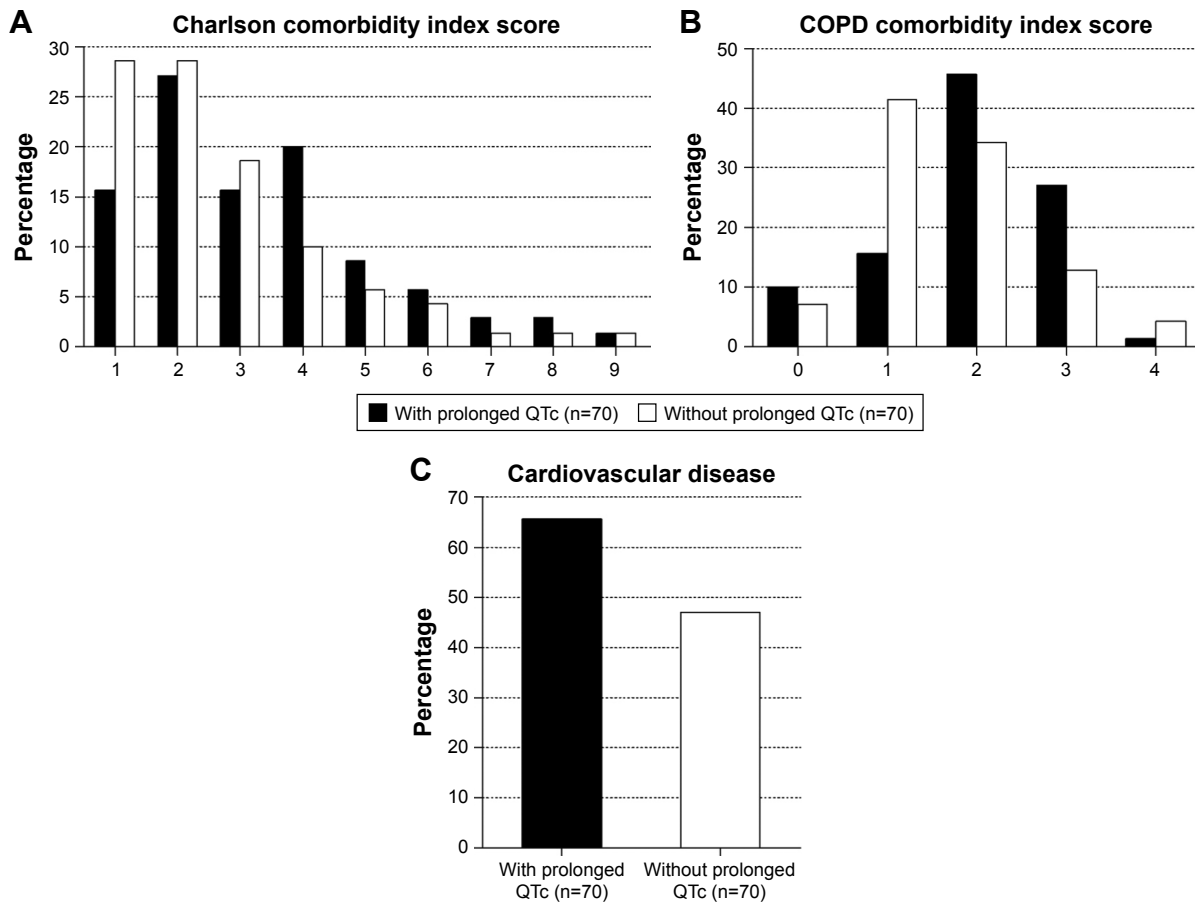


Figure 1 Distribution of (cardiovascular) comorbidity according to prolonged QTc status in COPD patients hospitalized for an acute exacerbation, assessed by the (A) Charlson comorbidity index ($p=0.034$), (B) COPD comorbidity index ($p=0.021$) and (C) presence of cardiovascular disease ($p=0.040$). **Abbreviation:** QTc, QT interval corrected according to Bazett's formula.

hospitalized for an AECOPD (Table 3). There was no effect of the demographic variables. Notably, the model supported a strong association of hypokalemia, cTnT elevation and conductance abnormalities on ECG with prolonged

QTc. The presence of pleural fluid on the CXR showed a borderline association with prolonged QTc, although not significant.

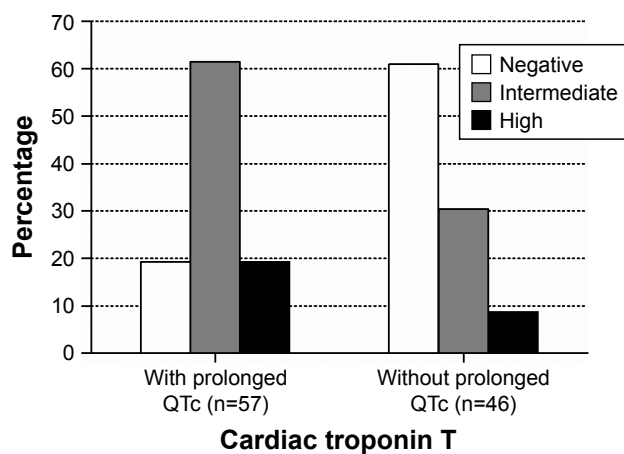


Figure 2 Distribution of cardiac troponin T value according to prolonged QTc status in COPD patients hospitalized for an acute exacerbation ($p<0.001$). Cutoff values: negative, ≤ 0.014 ng/mL; intermediate, $0.014-0.052$ ng/mL; high, ≥ 0.052 ng/mL. **Abbreviation:** QTc, QT interval corrected according to Bazett's formula.

Effect of prolonged QTc on survival

The Kaplan–Meier survival plot is shown in Figure 3. Patients with prolonged QTc had a mean survival of 405.6 days (95% CI 362.8–448.4), which was significantly shorter compared to 471.9 days (95% CI 441.3–502.5) for patients without QTc prolongation ($p=0.035$). Prolonged QTc was associated with increased mortality risk (HR 2.698 [95% CI 1.032–7.055], $p=0.043$); however, it was no longer significant after correction for age, FEV₁ and cTnT.

Prospective analysis – patient characteristics

The characteristics of the pulmonary patients hospitalized for acute respiratory problems, according to the main admission diagnosis, are summarized in Table 4. The cohort used for analysis consisted of 168 unique patients, 55 of which were admitted for an AECOPD,

Table 3 Multivariate logistic regression model: determinants for prolonged QTc in patients hospitalized for an AECOPD*

Variable	OR	(95% CI)	p-value
Age (years)	1.02	(0.97–1.07)	0.502
Sex (male vs female)	1.22	(0.39–3.82)	0.727
BMI (kg/m ²)	1.05	(0.96–1.15)	0.263
FEV ₁ (% pred)	1.03	(1.00–1.07)	0.078
Hypokalemia (yes vs no)	2.34	(2.16–603.81)	0.019
cTnT (>0.014 vs ≤0.014 ng/mL)	6.28	(2.28–19.03)	<0.001
Hypoxemia (yes vs no)	5.05	(0.19–1.29)	0.155
Heart rate (bpm)	1.02	(0.99–1.05)	0.124
ECG abnormal conductance (yes vs no)	5.17	(1.89–15.28)	0.002
CXR pleural fluid (yes vs no)	4.29	(1.01–26.07)	0.071

Notes: *Multiple imputation was performed for cardiac troponin T (cTnT). Significant p-values are highlighted in bold.

Abbreviations: QTc, QT interval corrected according to Bazett’s formula; AECOPD, acute exacerbation of COPD; BMI, body mass index; FEV₁, forced expiratory volume in 1 second; ECG, electrocardiogram; CXR, chest X-ray.

34 for lung cancer and 32 for pulmonary infections. Due to low numbers, 7 admissions related to pulmonary hypertension, 12 to interstitial lung disease and 22 to lung transplantation were grouped under miscellaneous. Six patients were excluded as they could not be assigned to any of the groups.

Lung disease and comorbidity variables revealed significant differences that were to be expected based on the inherent nature of the data. The use of QT-prolonging medication

differed significantly, with higher use of macrolide and fluoroquinolone antibiotics in the AECOPD group and macrolide antibiotics in the miscellaneous group (Figure 4A). A prolonged QTc was equally prevalent in all groups, with ~30% of patients showing values above the sex-specific threshold (Figure 4B). Heart rate was significantly increased in the AECOPD group, while other ECG variables did not differ and the CXR generally showed less abnormalities. There was a (non-significant) trend toward higher all-cause mortality in the lung cancer and miscellaneous groups.

QTc evolution

The ECGs taken before hospital discharge were examined to assess whether the QT interval remained prolonged during hospitalization. The patients for whom at least two ECGs were available were used for analysis. In the retrospective data (n=97), the proportion of patients with prolonged QTc remained stable: 33.0% at admission and 30.9% before discharge (p=0.80). In the prospective data (n=63), however, the proportion decreased significantly from 46.0% to 27.0% (p<0.001). There was no significant evolution of other ECG variables (data not shown) with the exception of the median heart rate, which decreased significantly from 88.0 (IQR 24.0) to 84.5 (IQR 22.0) bpm,

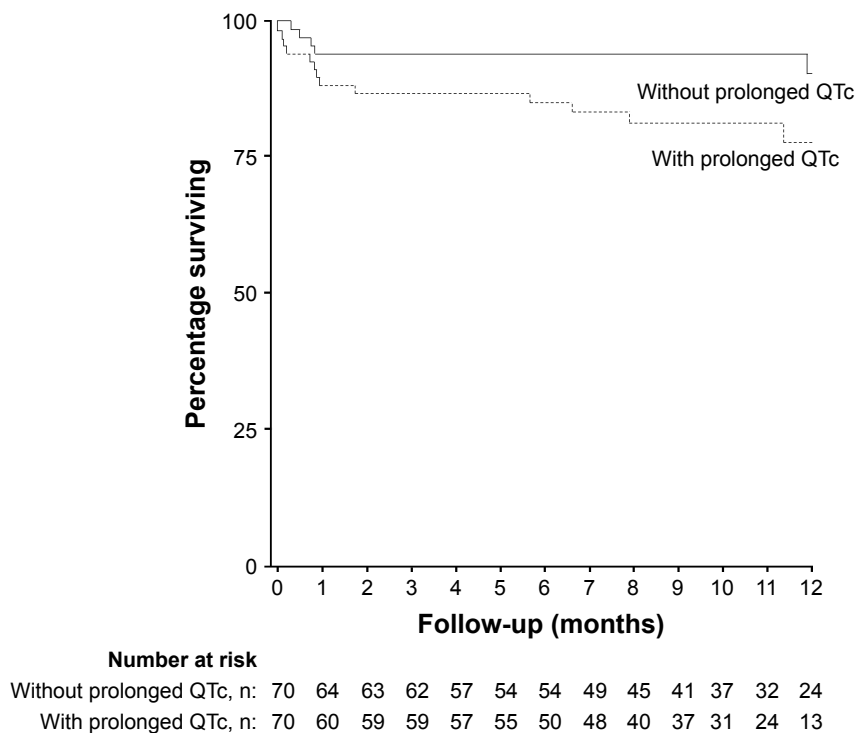


Figure 3 Influence of prolonged QTc on overall survival in COPD patients hospitalized for an acute exacerbation (log rank test, p=0.035). **Abbreviation:** QTc, QT interval corrected according to Bazett’s formula.

Table 4 Characteristics of pulmonary patients hospitalized for acute respiratory problems, according to the main admission diagnosis*

	AECOPD		Lung cancer		Pulmonary infections		Miscellaneous		p-value
	n=55		n=34		n=32		n=41		
Demographics									
Age (years)	72	[17]	69	[11]	76	[17]	66	[16]	0.084
Sex (F)	36	(20)	32	(11)	47	(15)	44	(18)	0.562
BMI (kg/m ²)	23	[8.52]	24	[5.24]	25	[12]	23	[7]	0.506
Obesity (BMI ≥30 kg/m ²)	17	(9/54)	6	(2)	32	(10/31)	12	(5)	0.032
Lung disease									
FEV ₁ (%)	37	[15]	70	[43]	62	[39]	73	[37]	<0.001
FEV ₁ /FVC (%)	41	[14]	70	[17]	74	[19]	77	[23]	<0.001
Current smoker	18	(10)	27	(9/33)	13	(4)	2	(1)	0.011
Number of pack-years (years)	35	[27]	30	[20]	9	[25]	18	[30]	<0.001
O ₂ dependent	11	(6)	6	(2/33)	6	(2)	17	(7)	0.434
Comorbidity									
Cardiovascular disease	64	(35)	47	(16)	53	(17)	68	(28)	0.223
Charlson comorbidity index	3	[3]	9	[5]	2	[2]	4	[3]	<0.001
COPD comorbidity index	2	[2]	3	[1]	2	[2]	2	[2]	0.015
Concomitant medication									
Cardiovascular medication	80	(44)	77	(26)	88	(28)	95	(39)	0.081
QT-prolonging medication	64	(35)	27	(9)	44	(14)	56	(23)	0.004
Blood values									
Hypokalemia	2	(1)	6	(2)	9	(3)	2	(1)	0.323
Hypomagnesemia	15	(2/13)	5	(1/22)	0	(0/8)	23	(3/13)	0.198
Cardiac troponin T (ng/mL) (≤0.014/0.014–0.052/≥0.052)	(15–16–3) (34/55)		(6–11–2) (19/34)		(5–10–3) (18/32)		(7–15–5) (27/41)		0.749
Elevated CRP	67	(37)	100	(34)	84	(27)	83	(34)	0.001
Hypoxemia	49	(25/51)	37	(7/19)	67	(18/27)	61	(17/28)	0.171
Respiratory acidosis	4	(2/51)	0	(0/19)	0	(0/27)	4	(1/28)	0.874
ECG									
Heart rate (bpm)	94	[26]	93	[26]	85	[19]	82	[18]	0.012
QTc duration (msec)	441	[35]	444	[36]	440	[55]	442	[43]	0.923
Prolonged QTc	35	(19)	32	(11)	28	(9)	27	(11)	0.858
QTcF duration (msec)	412	[39]	409	[29]	411	[52]	418	[50]	0.837
Prolonged QTcF	11	(6)	6	(2)	19	(6)	15	(6)	0.409
ECG normal rhythm	86	(47)	74	(25)	81	(26)	88	(36)	0.389
ECG normal conductance	60	(33)	82	(28)	66	(21)	68	(28)	0.164
ECG normal repolarization	60	(33)	62	(21)	72	(23)	59	(24)	0.667
ECG infarction signs	18	(10)	12	(4)	13	(4)	5	(2)	0.272
2nd ECG taken	47	(26)	32	(11)	35	(11)	37	(15)	0.472
2nd ECG heart rate (bpm)	89	[18]	95	[23]	79	[15]	76	[28]	0.028
2nd ECG QTc duration (msec)	429	[45]	447	[24]	466	[67]	436	[92]	0.236
2nd ECG normal rhythm	89	(23/26)	91	(10/11)	73	(8/11)	73	(11/15)	0.491
2nd ECG normal cond	62	(16/26)	55	(6/11)	46	(5/11)	67	(10/15)	0.751
2nd ECG normal repol	54	(14/26)	55	(6/11)	64	(7/11)	47	(7/15)	0.872
2nd ECG infarction signs	8	(2/26)	0	(0/11)	18	(2/11)	7	(1/15)	0.568
CXR									
CXR abnormal	42	(23)	97	(33)	72	(23)	66	(27)	<0.001
CXR cardiomegaly	13	(7)	9	(3)	28	(9)	27	(11)	0.062
CXR consolidation	15	(8)	32	(11)	31	(10)	20	(8)	0.136
CXR pleural fluid	7	(4)	29	(10)	19	(6)	24	(10)	0.027
CXR other	15	(8)	88	(30)	34	(11)	46	(19)	<0.001
Outcome									
Length of stay (days)	9	[8]	11	[6]	9	[6]	8	[7]	0.559
Mortality	6	(3)	21	(7)	3	(1)	12	(5)	0.072

Note: *Values are presented as percentage (n) or median [interquartile range].

Abbreviations: AECOPD, acute exacerbation of COPD; BMI, body mass index; FEV₁, forced expiratory volume in 1 second; FEV₁/FVC, Tiffeneau index; CRP, C-reactive protein; ECG, electrocardiogram; QTc, QT interval corrected according to Bazett's formula; QTcF, QT interval corrected according to Fridericia's formula; CXR, chest X-ray.

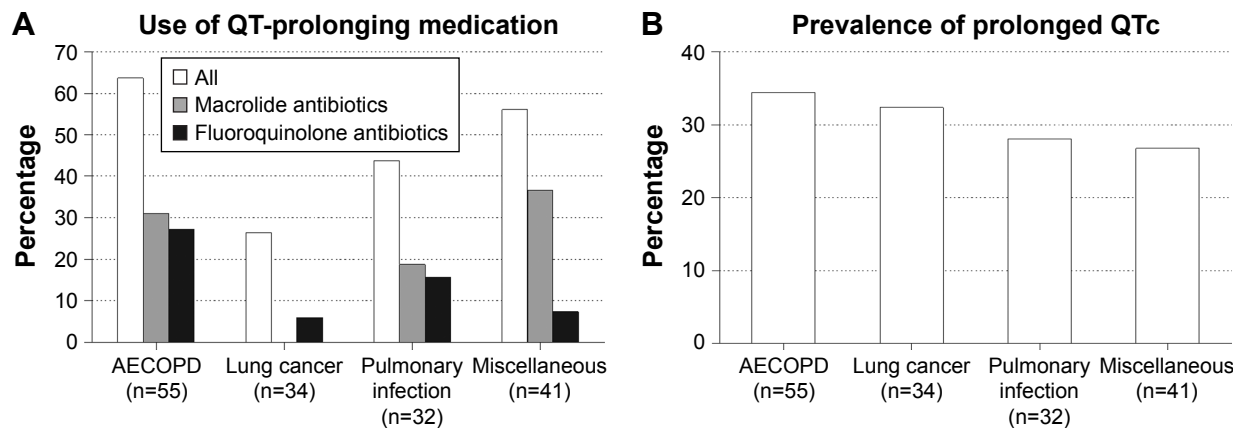


Figure 4 Distribution of the (A) concomitant use of QT-prolonging medication ($p=0.004$) and the (B) prevalence of prolonged QTc ($p=0.858$) among pulmonary patients hospitalized for acute respiratory problems according to the admission diagnosis. **Abbreviations:** AECOPD, acute exacerbation of COPD; QTc, QT interval corrected according to Bazett's formula.

$p=0.004$. When combining both data sets ($n=160$) and evaluating the QTc data in numeric (rather than categorical) form, the median QTc duration decreased significantly from 440.5 (IQR 43.3) to 434.5 (IQR 48.5) msec, $p<0.0001$. Similar results were found when limited to the established COPD patients ($n=123$) ($p=0.005$). The shift of the distribution toward lower QTc values is illustrated for both populations in Figure 5. In the non-COPD patients, there was also a significant leftward shift (data not shown).

Discussion

In this explorative study, we characterized patients hospitalized for an AECOPD with prolonged QTc as a distinct COPD subpopulation. They have significantly more comorbidity in general and more cardiovascular disease in particular, which reflects and highlights the intricate (and bidirectional) relationship between cardiovascular disease and AECOPD.³¹

In a multivariate model, we identified hypokalemia, cTnT and conductance abnormalities on ECG to be strongly and independently associated with prolonged QTc. While hypokalemia is a recognized causal risk factor for QT prolongation,³² the magnitude of risk associated with cTnT (a well-known prognostic factor associated with long-term and short-term mortality in AECOPD)¹⁷⁻¹⁹ may rather pinpoint to the presence of an unidentified underlying cardiovascular disease³³ or increased right ventricular strain during an AECOPD. Although borderline not significant, this is also reflected by the association with pleural effusion, which is most commonly caused by congestive heart failure, which in turn is a recognized risk factor for QT prolongation. Unfortunately, no echocardiogram was available that could have distinguished left from right heart failure. The association with conductance irregularities is likely explained by the lengthening of the QRS complex, which in itself results

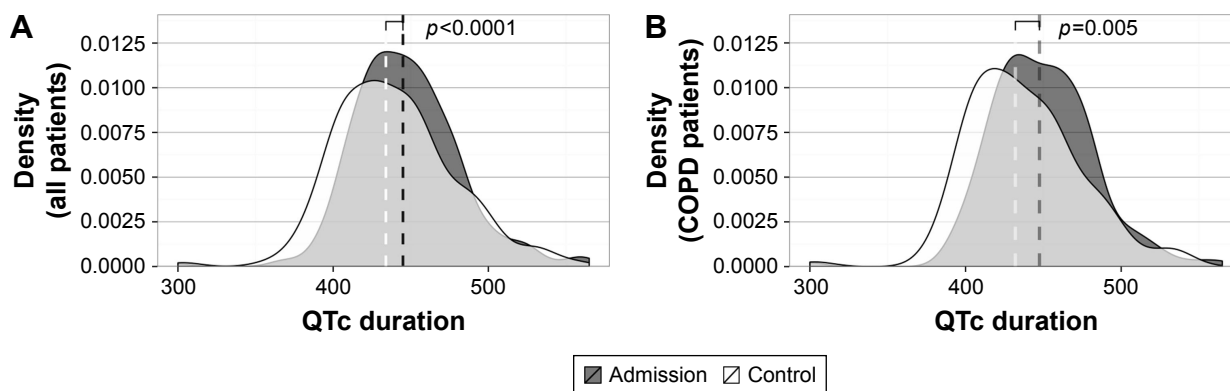


Figure 5 The median QTc duration, evaluated in (A) all pulmonary patients hospitalized for acute respiratory problems ($n=160$) and more specifically (B) COPD patients hospitalized for an acute exacerbation ($n=123$), decreases significantly during hospitalization. **Notes:** This is illustrated by the leftward shift of the density curve of the control ECG towards lower QTc values when compared with the admission ECG. Only patients for whom at least two ECGs were available were used for analysis. The median is indicated by the dotted line. **Abbreviations:** QTc, QT interval corrected according to Bazett's formula; ECG, electrocardiogram.

in a longer QT interval, for which Bazett's formula does not correct.³⁴ The increased mortality risk associated with prolonged QTc further highlights that these patients represent a more fragile and comorbid subgroup. As its effect is not independent from other risk factors, prolonged QTc is to be considered as a sign of underlying cardiovascular (co) morbidity.

When comparing AECOPD to other acute respiratory problems, we found no significant differences in any of the ECG variables, specifically a prolonged QTc was not more prevalent in the AECOPD group. Earlier studies did reveal patients with COPD being more likely to have an abnormal ECG than the general population,^{23,25} but we found no earlier studies comparing COPD with other pulmonary diseases. In our population, 55.2% of patients with COPD had an abnormal ECG at admission, a number comparable to estimates in the literature.³¹

A prolonged QTc was a rather common finding (~30%) that can partly be explained by the use of QTc values corrected according to Bazett's formula, known to overcorrect at higher heart rates and not to correct for the QRS duration. The high prevalence leads us to question the predictive utility of current cutoff criteria and to support either the need for higher cutoff values than those cited in literature or to support the use of other correction methods.^{34,35} A scientific statement from the American Heart Association and the American College of Cardiology Foundation recommends that 470 msec for males and 480 msec for females should be considered abnormally prolonged.³⁶ While there is no consensus on the best correction method to be used in clinical practice, the Fridericia formula is currently considered to reflect a more accurate correction in patients with tachycardia.³⁴ Based on Bazett's formula, we found QT prolongation to be more prevalent in COPD patients at hospital admission, with a significant decrease in the proportion of prolonged QTc on the ECG at discharge. Normalization of the QTc duration is likely related to the correction or stabilization of the acute respiratory event, which corresponds to periods of increased cardiovascular stress and tachycardia. Surprisingly, many patients were started on fluoroquinolone antibiotics (as an established treatment for AECOPD) regardless of their QT interval. This remarkable finding could indicate that QTc assessment is often overlooked or that the presence of prolonged QTc has little impact on the final decision to start with QT-prolonging medications.

The combined results of high prevalence and little clinical follow-up support the notion that the observed prevalence is subject to overestimation. Recalculating the QTc

duration using the Fridericia formula in the prospective study resulted in a lower prevalence of only 11% for AECOPD, not significantly different when compared with other acute pulmonary diseases requiring hospitalization. Using QTcF in the retrospective sample resulted in 64% of the patients with "prolonged QTc" to be reclassified as "normal". These reclassified patients are less likely at risk for malignant ventricular arrhythmias. Nevertheless, QT prolongation based on Bazett's formula is still able to identify COPD patients with a distinct clinical profile characterized by significantly higher mortality and more underlying cardiovascular disease compared to similar COPD patients without QT prolongation.

Our study has several other limitations. Because we dealt with registry data, there were some missing observations, most notably cTnT. Moreover, it was considered as an ordinal variable (based on pertinent cutoff values), which impacts the results. The grouping of patients in the prospective data set was based on the admission diagnosis, using a non-systematic approach, oversimplifying the complex interplay of different pulmonary diseases in practice (eg, lung cancer or lung transplantation with underlying COPD). We used the automated QT value computed by the recording system and only used the Bazett's formula for heart rate correction, with its inherent limitations.³⁴ In addition, the prospective protocol influenced the assessment of the control ECG and did not allow a systematic control of all ECGs before discharge, complicating straightforward interpretation and hypothesis testing concerning the evolution of QTc duration. Further research is necessary to systematically evaluate prolonged QTc in hospitalized patients with COPD and its potential consequences.

Conclusion

A prolonged QT interval corrected according to Bazett's formula is a common finding in patients admitted with acute respiratory problems, non-specific for AECOPD. It is a sign of (cardiovascular) comorbidity in patients with COPD and is associated with increased mortality. Withholding QT-prolonging medication remains warranted in clinical practice, as the risk of developing ventricular arrhythmia is most pronounced in patients with preexisting cardiac disease on poly-pharmacologic treatment. It is valuable, however, to verify QT prolongation before discharge, either with another correction method or on another ECG, as many patients might have a normal QTc after correction or stabilization of the acute respiratory symptoms and could benefit from clinically indicated first-choice medication. The true validity of a prolonged

QT interval in AECOPD, in terms of risk for ventricular arrhythmias and sudden cardiac death, requires further in-depth investigation.

Acknowledgments

This work was supported by the Flemish Government Agency for Innovation by Science and Technology (IWT). This work was part of the Belgian trial with Azithromycin for acute COPD Exacerbations requiring hospitalization (BACE), which was funded by the Flemish Government Agency for Innovation by Science and Technology (grant number: IWT-TBM130233). The work was supported by the KU Leuven AstraZeneca Chair in Respiratory Pathophysiology. IWT nor AstraZeneca is involved in the study design; in the collection, analysis and interpretation of data; in the writing of the manuscript or in the decision to submit the manuscript for publication. KV and SE are supported as doctoral candidates by the IWT and the Fund for Scientific Research Flanders, respectively. RW and WJ are supported as postdoctoral clinical researchers by the Fund for Scientific Research Flanders. Data were used for a dissertation in the fulfillment of the degree of Master of Medicine. Data have been presented at the American Thoracic Society Conference (Washington, DC, 22 May 2017 – http://www.atsjournals.org/doi/pdf/10.1164/ajrcm-conference.2017.195.1_MeetingAbstracts.A3610).

Author contributions

All authors contributed toward data analysis, drafting and critically revising the paper and agree to be accountable for all aspects of the work.

Disclosure

RW has received research funding from Biotronik, Boston Scientific and Medtronic, and speakers and consultancy fees from Biotronik, Boston Scientific, Medtronic, St Jude Medical and Sorin. WJ has received research funding, speakers and consultancy fees from Boehringer Ingelheim, AstraZeneca, Novartis, Chiesi and GSK. The other authors report no conflicts of interest in this work.

References

- Mathers CD, Loncar D. Projections of global mortality and burden of disease from 2002 to 2030. *PLoS Med*. 2006;3(11):e442.
- Huiart L, Ernst P, Suissa S. Cardiovascular morbidity and mortality in COPD. *Chest*. 2005;128(4):2640–2646.
- Rutten FH, Moons KG, Cramer MJ, et al. Recognising heart failure in elderly patients with stable chronic obstructive pulmonary disease in primary care: cross sectional diagnostic study. *BMJ*. 2005; 331(7529):1379.
- Celli BR, MacNee W, Agusti A, et al. Standards for the diagnosis and treatment of patients with COPD: a summary of the ATS/ERS position paper. *Eur Respir J*. 2004;23(6):932–946.
- Decramer M, Janssens W, Miravittles M. Chronic obstructive pulmonary disease. *Lancet*. 2012;379(9823):1341–1351.
- Suissa S, Dell’Aniello S, Ernst P. Long-term natural history of chronic obstructive pulmonary disease: severe exacerbations and mortality. *Thorax*. 2012;67(11):957–963.
- Piquet J, Chavaillon JM, David P, Martin F, Blanchon F, Roche N; French College of General Hospital Respiratory Physicians (CPHG). High-risk patients following hospitalisation for an acute exacerbation of COPD. *Eur Respir J*. 2013;42(4):946–955.
- Aaron SD. Management and prevention of exacerbations of COPD. *BMJ*. 2014;349:g5237.
- Sin DD, Anthonisen NR, Soriano JB, Agusti AG. Mortality in COPD: role of comorbidities. *Eur Respir J*. 2006;28(6):1245–1257.
- McGarvey LP, John M, Anderson JA, Zvarich M, Wise RA; TORCH Clinical Endpoint Committee. Ascertainment of cause-specific mortality in COPD: operations of the TORCH Clinical Endpoint Committee. *Thorax*. 2007;62(5):411–415.
- Sin DD, Man SF. Why are patients with chronic obstructive pulmonary disease at increased risk of cardiovascular diseases? The potential role of systemic inflammation in chronic obstructive pulmonary disease. *Circulation*. 2003;107(11):1514–1519.
- Agusti AG, Noguera A, Sauleda J, Sala E, Pons J, Busquets X. Systemic effects of chronic obstructive pulmonary disease. *Eur Respir J*. 2003; 21(2):347–360.
- Finkelstein J, Cha E, Scharf SM. Chronic obstructive pulmonary disease as an independent risk factor for cardiovascular morbidity. *Int J Chron Obstruct Pulmon Dis*. 2009;4:337–349.
- Sin DD, Man SF. Chronic obstructive pulmonary disease as a risk factor for cardiovascular morbidity and mortality. *Proc Am Thorac Soc*. 2005; 2(1):8–11.
- Curkendall SM, DeLuise C, Jones JK, et al. Cardiovascular disease in patients with chronic obstructive pulmonary disease, Saskatchewan Canada cardiovascular disease in COPD patients. *Ann Epidemiol*. 2006;16(1):63–70.
- Neukamm AM, Høise AD, Hagve TA, Søyseth V, Omland T. High-sensitivity cardiac troponin T levels are increased in stable COPD. *Heart*. 2013;99(6):382–387.
- Brekke PH, Omland T, Holmedal SH, Smith P, Søyseth V. Troponin T elevation and long-term mortality after chronic obstructive pulmonary disease exacerbation. *Eur Respir J*. 2008;31(3):563–570.
- Høise AD, Omland T, Hagve TA, Brekke PH, Søyseth V. NT-proBNP independently predicts long term mortality after acute exacerbation of COPD – a prospective cohort study. *Respir Res*. 2012;13:97.
- Høise AD, Neukamm A, Karlsson BD, Omland T, Brekke PH, Søyseth V. Elevated high-sensitivity cardiac troponin T is associated with increased mortality after acute exacerbation of chronic obstructive pulmonary disease. *Thorax*. 2011;66(9):775–781.
- Chang CL, Robinson SC, Mills GD, et al. Biochemical markers of cardiac dysfunction predict mortality in acute exacerbations of COPD. *Thorax*. 2011;66(9):764–768.
- Pavasini R, d’Ascenzo F, Campo G, et al. Cardiac troponin elevation predicts all-cause mortality in patients with acute exacerbation of chronic obstructive pulmonary disease: systematic review and meta-analysis. *Int J Cardiol*. 2015;191:187–193.
- Rich JD, Thenappan T, Freed B, et al. QTc prolongation is associated with impaired right ventricular function and predicts mortality in pulmonary hypertension. *Int J Cardiol*. 2013;167(3):669–676.
- Warnier MJ, Rutten FH, Numans ME, et al. Electrocardiographic characteristics of patients with chronic obstructive pulmonary disease. *COPD*. 2013;10(1):62–71.
- Holtzman D, Aronow WS, Mellana WM, et al. Electrocardiographic abnormalities in patients with severe versus mild or moderate chronic obstructive pulmonary disease followed in an academic outpatient pulmonary clinic. *Ann Noninvasive Electrocardiol*. 2011;16(1):30–32.

25. Sievi NA, Clarenbach CF, Camen G, Rossi VA, van Gestel AJ, Kohler M. High prevalence of altered cardiac repolarization in patients with COPD. *BMC Pulm Med*. 2014;14(1):55.
26. Vestbo J, Hurd SS, Agustí AG, et al. Global strategy for the diagnosis, management, and prevention of chronic obstructive pulmonary disease: GOLD executive summary. *Am J Respir Crit Care Med*. 2013;187(4):347–365.
27. Vermeersch K, Gabrovská M, Deslypere G, et al. The Belgian trial with azithromycin for acute COPD exacerbations requiring hospitalization: an investigator-initiated study protocol for a multicenter, randomized, double-blind, placebo-controlled trial. *Int J Chron Obstruct Pulmon Dis*. 2016;11(1):687–696.
28. Charlson ME, Pompei P, Ales KL, MacKenzie CR. A new method of classifying prognostic comorbidity in longitudinal studies: development and validation. *J Chronic Dis*. 1987;40(5):373–383.
29. Goldenberg I, Moss AJ, Zareba W. QT interval: how to measure it and what is “normal.” *J Cardiovasc Electrophysiol*. 2006;17(3):333–336.
30. van Buuren S, Groothuis-Oudshoorn K. MICE: multivariate imputation by chained equations in R. *J Stat Softw*. 2011;45(3):1–67.
31. Laratta CR, van Eeden S. Acute exacerbation of chronic obstructive pulmonary disease: cardiovascular links. *Biomed Res Int*. 2014;2014:528789.
32. Al-Khatib SM, LaPointe NM, Kramer JM, Califf RM. What clinicians should know about the QT Interval. *JAMA*. 2003;289(16):2120–2128.
33. Soyseth V, Bhatnagar R, Holmedahl NH, et al. Acute exacerbation of COPD is associated with fourfold elevation of cardiac troponin T. *Heart*. 2013;99(2):122–126.
34. Vandenberk B, Vandael E, Robyns T, et al. Which QT correction formulae to use for QT monitoring? *J Am Heart Assoc*. 2016;5(6):e003264.
35. Rautaharju PM, Zhang ZM, Prineas R, Heiss G. Assessment of prolonged QT and JT intervals in ventricular conduction defects. *Am J Cardiol*. 2004;93(8):1017–1021.
36. Drew BJ, Ackerman MJ, Funk M, et al; American Heart Association Acute Cardiac Care Committee of the Council on Clinical Cardiology, the Council on Cardiovascular Nursing, and the American College of Cardiology Foundation. Prevention of torsade de pointes in hospital settings: a scientific statement from the American Heart Association and the American College of Cardiology Foundation. *Circulation*. 2010;121(8):1047–1060.

International Journal of COPD

Publish your work in this journal

The International Journal of COPD is an international, peer-reviewed journal of therapeutics and pharmacology focusing on concise rapid reporting of clinical studies and reviews in COPD. Special focus is given to the pathophysiological processes underlying the disease, intervention programs, patient focused education, and self management protocols.

Submit your manuscript here: <http://www.dovepress.com/international-journal-of-chronic-obstructive-pulmonary-disease-journal>

Dovepress

This journal is indexed on PubMed Central, MedLine and CAS. The manuscript management system is completely online and includes a very quick and fair peer-review system, which is all easy to use. Visit <http://www.dovepress.com/testimonials.php> to read real quotes from published authors.