

Disulfiram Inhibits Epithelial–Mesenchymal Transition Through TGF β –ERK–Snail Pathway Independently of Smad4 to Decrease Oral Squamous Cell Carcinoma Metastasis [Corrigendum]

Bu W, Wang Z, Meng L, et al. *Cancer Manag Res*. 2019;11:3887–3898.

respectively are incorrect. The correct Figures are as follows.

The authors have advised due to an error at the time of figure assembly, Figures 2 and 3 on pages 3892 and 3893,

The authors apologize for this error and advise it does not affect the results of the paper.

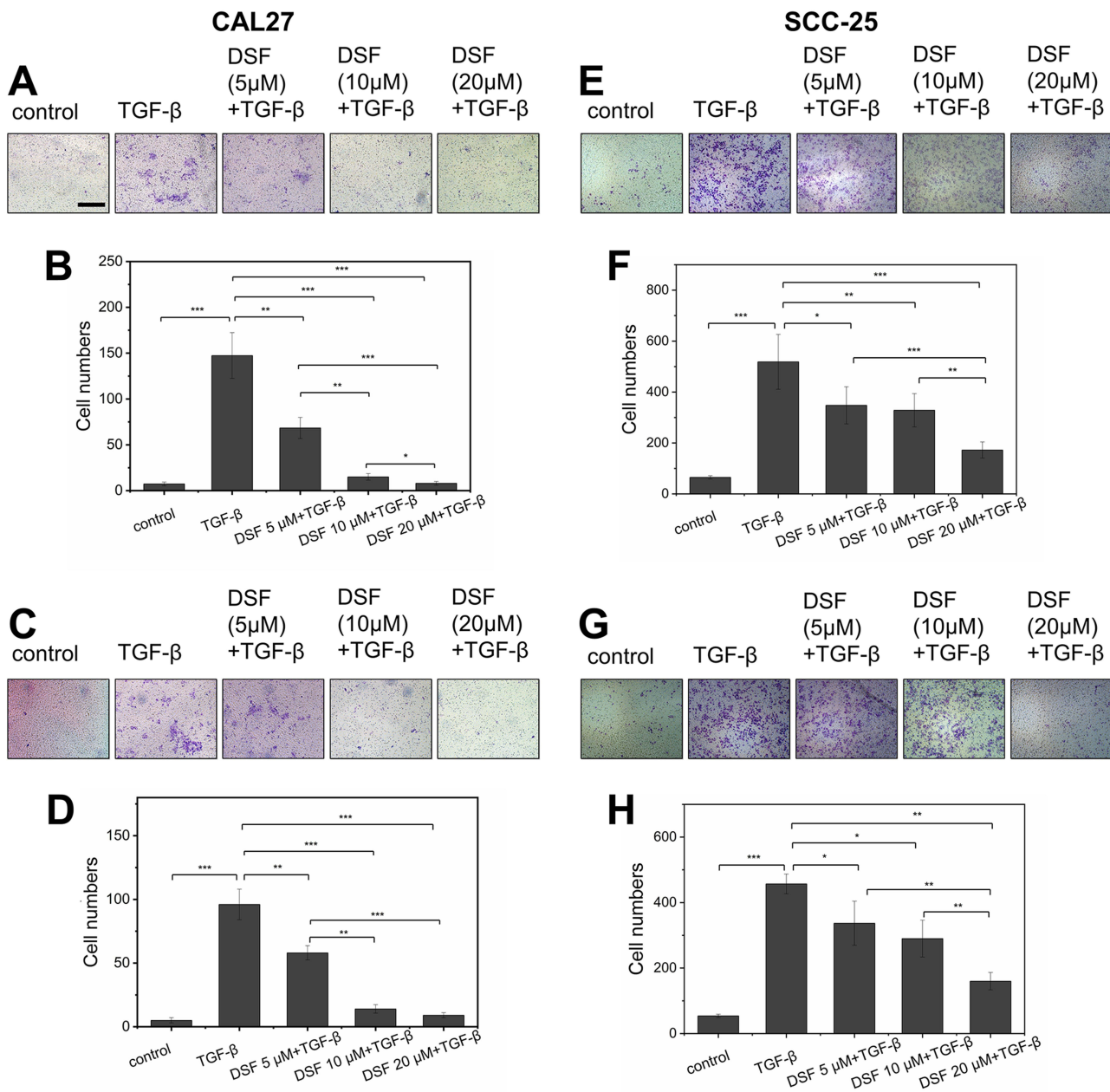


Figure 2 Dsf suppressed TGFβ₁-induced migration and invasion in OSCC cells.

Notes: (A and E) Transwell-based migration assays were performed to check the effect of Dsf on cell migration of Smad4-mutated CAL27 and Smad4 wild-type SCC25 cells exposed to TGFβ₁ (10 ng/mL). (B and F) Quantification of cell migration. (C and G) Transwell-based invasion assays were performed to check the effect of Dsf on cell invasion of Smad4-mutated CAL27 and Smad4 wild-type SCC25 cells exposed to TGFβ₁ (10 ng/mL). (D and H) Quantification of cell invasion. Values represent mean ± SEM. *P<0.05; **P<0.01; ***P<0.001; bar 300 μm.

Abbreviation: Dsf, disulfiram; OSCC, oral squamous cell carcinoma.

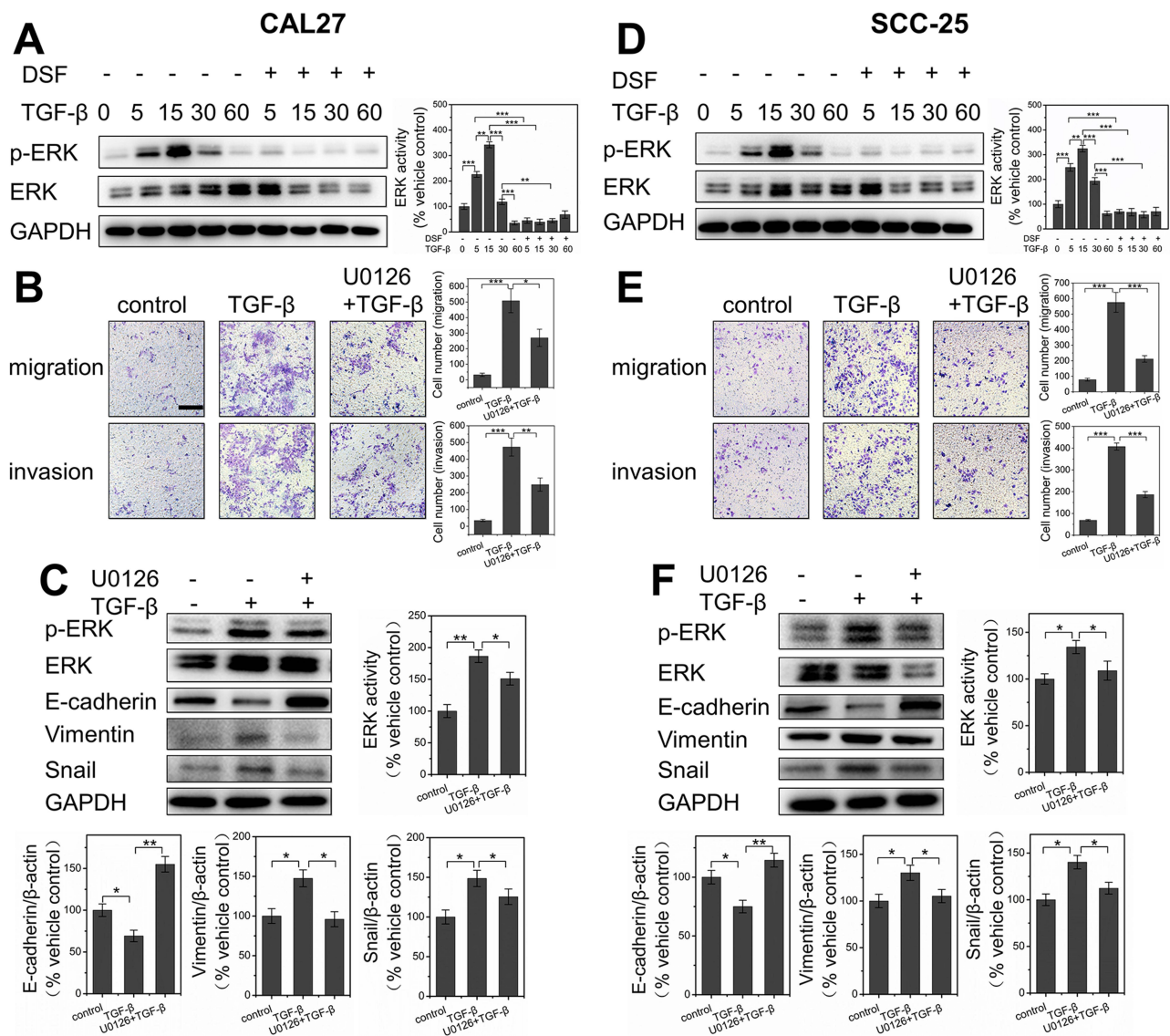


Figure 3 Dsf regulated EMT of OSCC cells through TGFβ-ERK-Snail pathway independently of Smad4. **Notes:** (A and D) Western blot results of p-ERK and ERK derived from Smad4-mutated CAL27 and Smad4 wild-type SCC25 stimulated by TGFβ₁ for different periods (5, 15, 30, 60 minutes) or combined with Dsf (20 μM) pretreatment for 24 hours; quantitative results of Western blot from three independent experiments shown as mean ± SEM. Direct role of TGFβ-ERK-Snail pathway investigated using U0126, a chemical inhibitor of MEK1/2 and upstream activator of ERK. (B and E) Transwell-based migration and invasion assays were performed after cells had been exposed to TGFβ₁ (10 ng/mL) alone or combined with U0126 (20 μM); quantification of cell migration and invasion shown as means ± SEM. (C and F) Western blot results of p-ERK, ERK, E-cadherin, vimentin and Snail from cells exposed to TGFβ₁ (10 ng/mL) alone or combined with U0126 (20 μM); quantitative results of Western blot from three independent experiments shown as mean ± SEM. *P<0.05; **P<0.01; ***P<0.001; bar 200 μm. **Abbreviations:** Dsf, disulfiram; OSCC, oral squamous cell carcinoma; EMT, epithelial-mesenchymal transition.

Cancer Management and Research

Dovepress

Publish your work in this journal

Cancer Management and Research is an international, peer-reviewed open access journal focusing on cancer research and the optimal use of preventative and integrated treatment interventions to achieve improved outcomes, enhanced survival and quality of life for the cancer patient.

The manuscript management system is completely online and includes a very quick and fair peer-review system, which is all easy to use. Visit <http://www.dovepress.com/testimonials.php> to read real quotes from published authors.

Submit your manuscript here: <https://www.dovepress.com/cancer-management-and-research-journal>