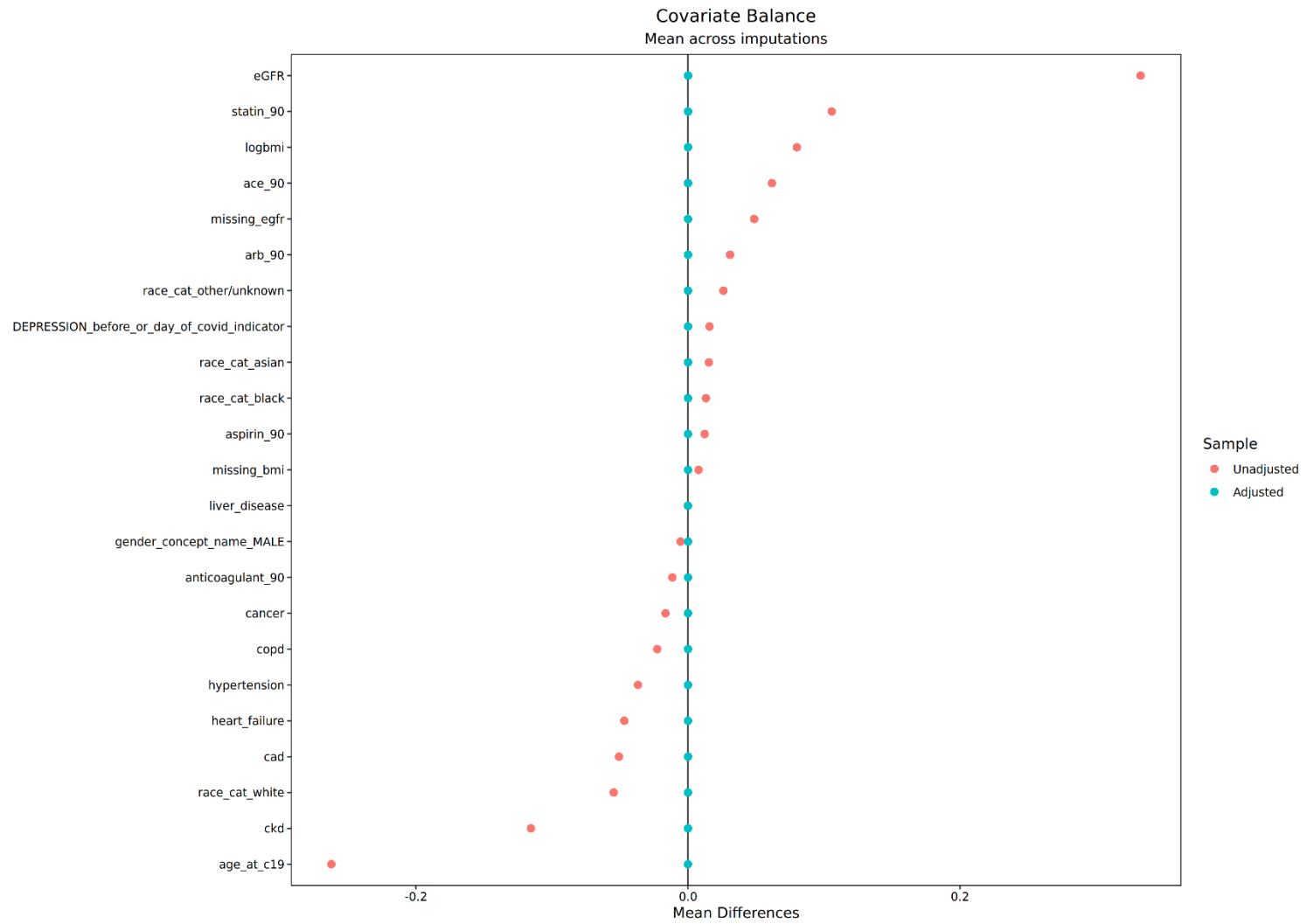
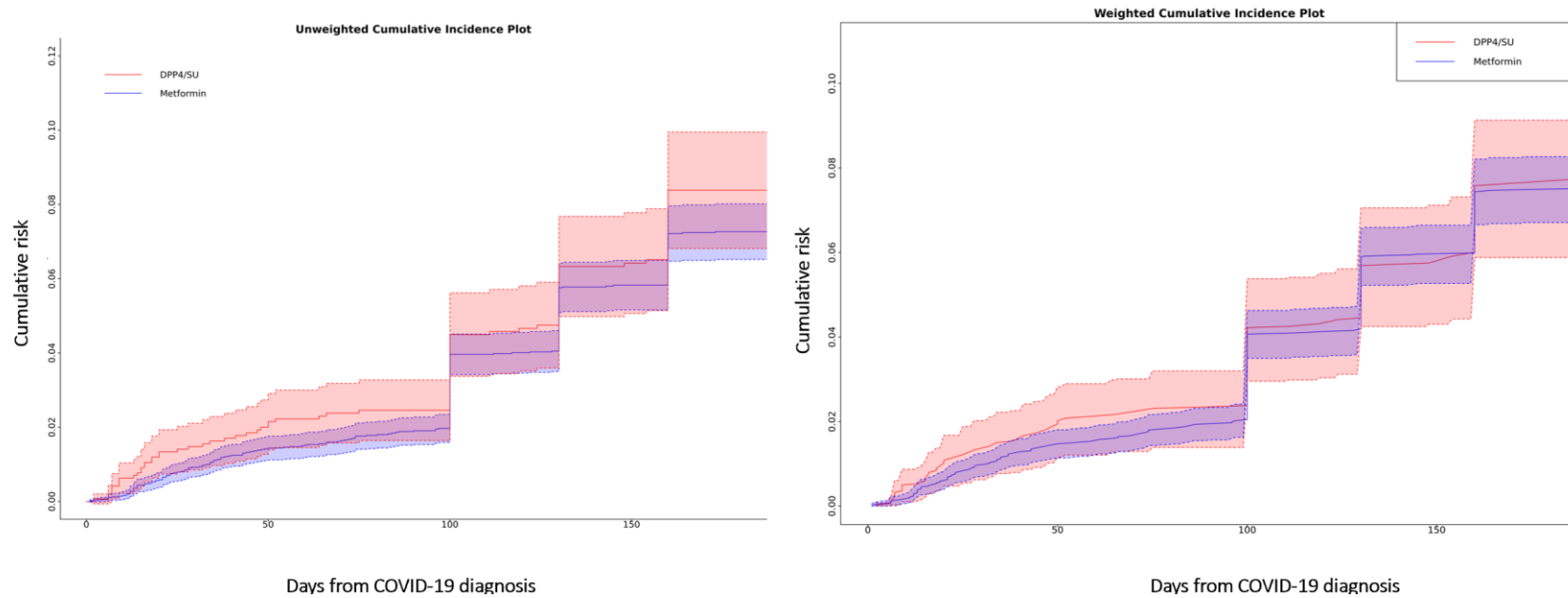


## Table of Contents

<b>Supplemental Figure 1.</b> Standardized mean differences of covariates before and after weighting for cohort 2.....	1
<b>Supplemental Figure 2.</b> Weighted and unweighted cumulative incidence curves of PASC defining PASC as $ML \geq 0.7$ or U09.9 .....	2
<b>Supplemental Table 1.</b> Weighted and unweighted distribution of baseline covariates for cohort 2 .....	3
<b>Supplemental Table 2.</b> Weighted risk estimates defining PASC above and below predicted probability $\geq 0.7$ .....	4
<b>Supplemental Table 3.</b> Weighted and unweighted risk estimates defining PASC as $ML \geq 0.7$ or U09.9 probability $\geq 0.7$ .....	5



**Supplemental Figure 1.** Standardized mean differences of covariates comparing metformin vs SU/DPP4i for cohort 2 before and after weighting



**Supplemental Figure 2.** Weighted and unweighted cumulative incidence curves for PASC defined using presence of predicted probability  $\geq 0.7$  or ICD-10 code.

**Supplemental Table 1.** Weighted and unweighted distribution of study covariates at COVID-19 diagnosis for cohort 2

Covariate	Unweighted Cohort				Weighted Cohort	
	Metformin Users		SU/DPP4i Users		Metformin Users	SU/DPP4i Users
	N = 10,964		N = 2,860		%	%
	N	%	N	%		
Mean Years of Age (SD)	60.5	12.5	63.7	12.4	61.1 (12.4)	61.1 (12.6)
Race						
White	5,494	61.5%	1616	65.7%	59.5%	59.5%
Black or African American	2,192	24.5%	574	23.3%	23.9%	23.9%
Asian	331	3.7%	64	2.6%	5.1%	5.1%
Other/Unknown	913	10.2%	207	8.4%	11.5%	11.5%
Male Gender	4,859	44.3%	1,283	44.9%	44.4%	44.4%
Log BMI (SD)	3.5	0.3	3.5	0.2	3.5 (0.3)	3.5 (0.3)
Mean eGFR (SD)	85.6	30.5	77.9	34.1	88.2 (33.9)	88.2 (39.3)
Heart failure	1,089	9.9%	418	14.6%	10.9%	10.9%
Hypertension	8,717	79.5%	2,379	83.2%	80.3%	80.3%
Coronary Artery Disease	1,844	16.8%	626	21.9%	17.9%	17.9%
COPD	1,071	9.8%	344	12.0%	10.2%	10.2%
Cancer	1,226	11.2%	367	12.8%	11.5%	11.5%
CKD stage 1, 2, or 3 <sup>a</sup>	1,333	12.2%	678	23.7%	14.5%	14.5%
Liver Disease	439	4.0%	115	4.0%	4.0%	4.0%
Depression	3,083	28.1%	759	26.5%	27.8%	27.8%
ACE Inhibitor Use	2,532	23.1%	484	16.9%	21.8%	21.8%
ARB Use	1,723	15.7%	361	12.6%	15.1%	15.1%
Statin Use	4,494	41.0%	870	30.4%	38.8%	38.8%
Anti-Coagulant Use	748	6.8%	228	8.0%	7.1%	7.1%
Aspirin use	897	8.2%	199	7.0%	7.9%	7.9%

<sup>a</sup>Patients with CKD stage 4 or 5 were excluded to minimize the effects of confounding by severity. Abbreviations: SU = Sulfonylurea; DPP4i= Dipeptidyl Peptidase IV inhibitor; SD = Standard Deviation; eGFR = Estimated Glomerular filtration rate; BMI = Body Mass Index; COPD = Chronic Obstructive Pulmonary Disease; CKD = Chronic Kidney Disease; ACE = Angiotensin-Converting Enzyme; ARB = Angiotensin Receptor Blocker; SMD = Standardized Mean Difference.

**Supplemental Table 2.** Weighted risk estimates using binary ML cut point (above and below  $\geq 0.7$ ) definition of PASC

	<b>Risk per 100 among Metformin Users (95% CI)</b>	<b>Risk per 100 among SU/DPP4i Users (95% CI)</b>	<b>Risk Difference per 100 (95% CI)</b>	<b>Risk Ratio (95% CI)</b>
<b>3-months</b>	2.74 (2.42; 3.07)	2.59 (1.89; 3.28)	0.25 (-0.59; 1.10)	1.08 (0.82; 1.43)
<b>6-months</b>	8.17 (7.61; 8.73)	8.07 (6.80; 9.32)	0.26 (-1.03; 1.55)	1.03 (0.88; 1.21)

Abbreviations: SU = Sulfonylurea; DPP4i= Dipeptidyl Peptidase IV inhibitor; CI = Confidence Interval.

**Supplemental Table 3.** Weighted and unweighted risk estimates defining PASC as presence of predicted probability  $\geq 0.7$  or U09.9

Unweighted Estimates					Weighted Estimates			
	Risk per 100 among Metformin Users (95% CI)	Risk per 100 among SU/DPP4i Users (95% CI)	Risk Difference per 100 (95% CI)	Risk Ratio (95% CI)	Risk per 100 among Metformin Users (95% CI)	Risk per 100 among SU/DPP4i Users (95% CI)	Risk Difference per 100 (95% CI)	Risk Ratio (95% CI)
<b>3-months</b>	1.88 (1.52; 2.25)	2.46 (1.64; 3.27)	-0.55 (-1.67; 0.58)	0.87 (0.65; 1.15)	1.95 (1.57; 2.34)	2.38 (1.38; 3.20)	-0.22 (-1.42; 0.97)	0.94 (0.69; 1.29)
<b>6-months</b>	7.27 (6.52; 8.02)	8.38 (6.81; 9.95)	-0.91 (-2.5; 0.67)	0.89 (0.73; 1.08)	7.51 (6.71; 8.27)	7.76 (5.88; 9.13)	-0.23 (-1.90; 1.43)	0.97 (0.78; 1.20)

Abbreviations: SU = Sulfonylurea; DPP4i= Dipeptidyl Peptidase I inhibitor; CI = Confidence Interval.