

Figure S1. A. 1-, 3-, and 5-year ROC curves of the nomogram in the validation cohort.

Abbreviations: ROC, receiver operating characteristics; AUC: area under the curve

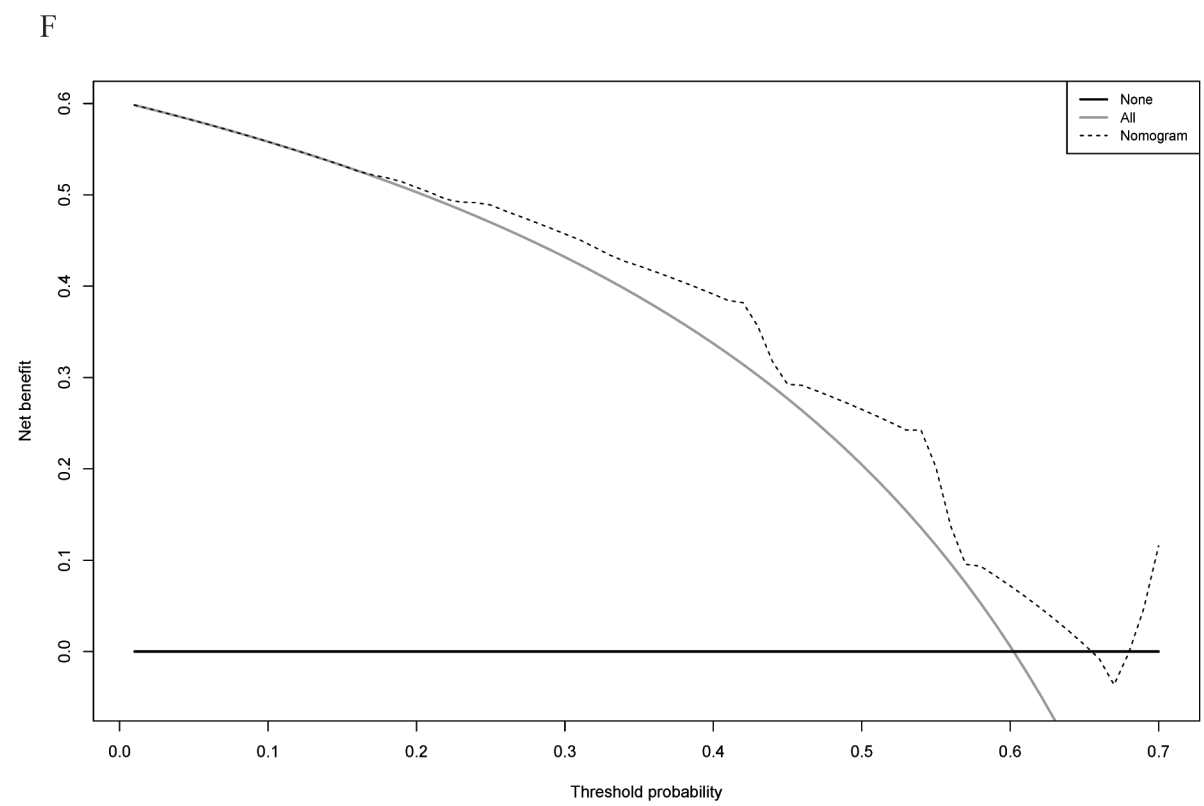
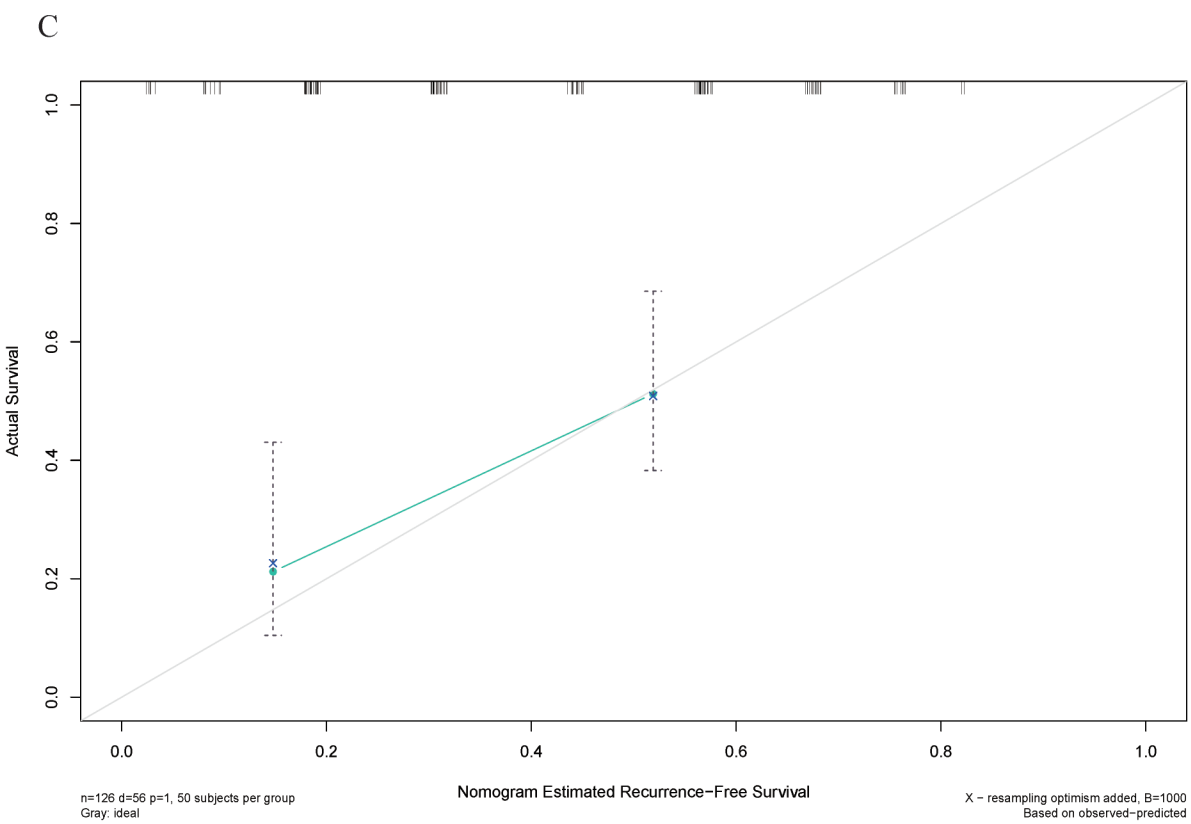
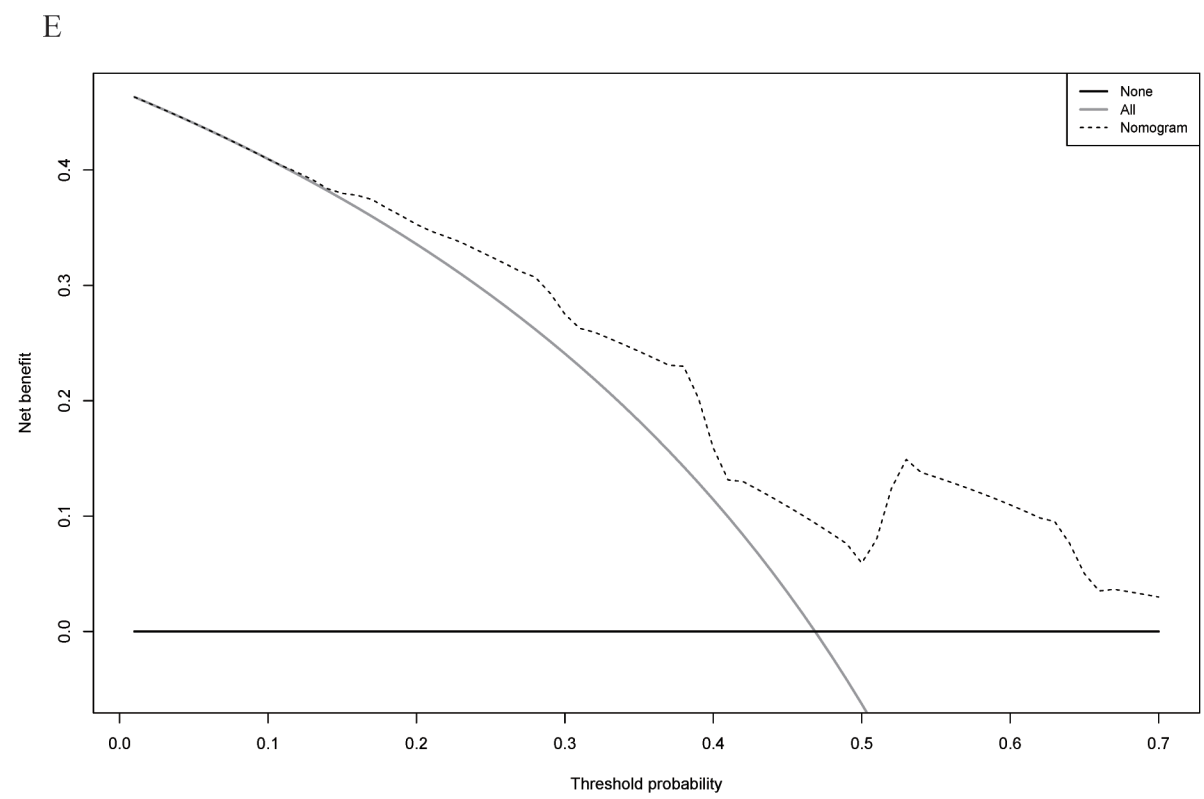
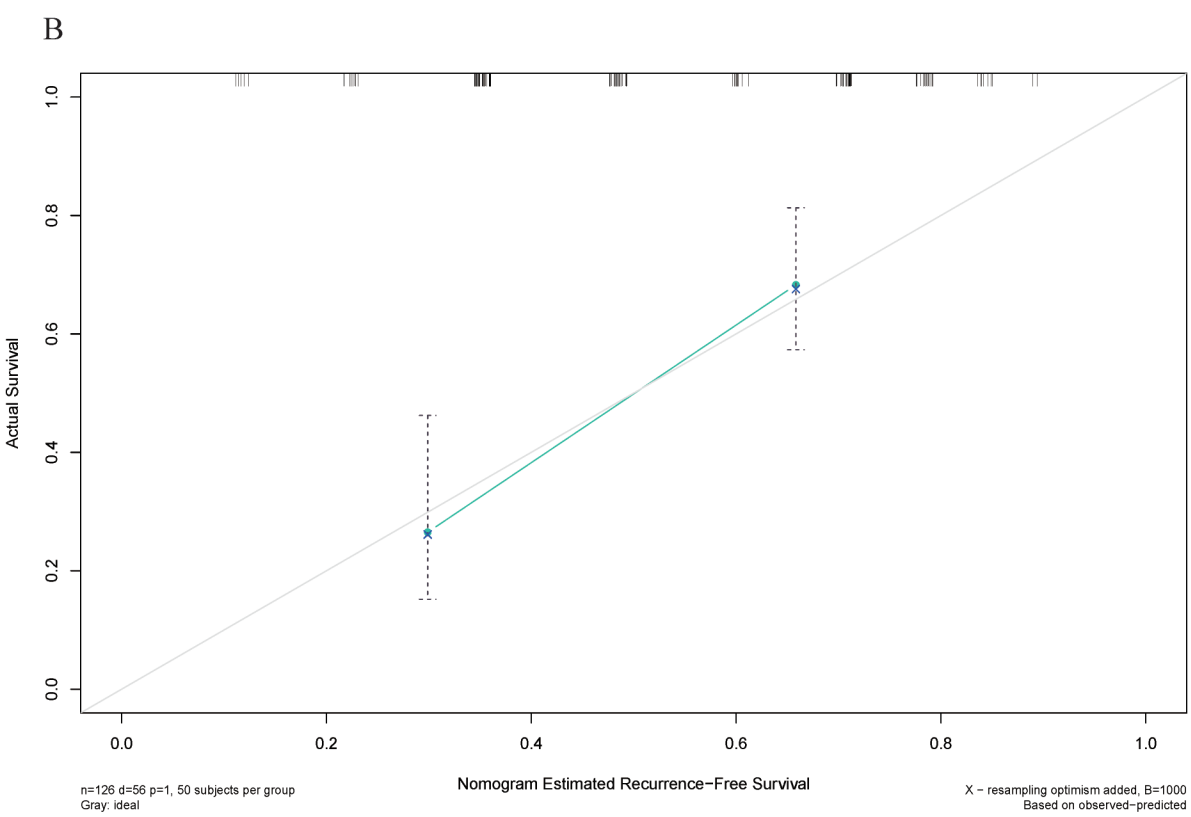
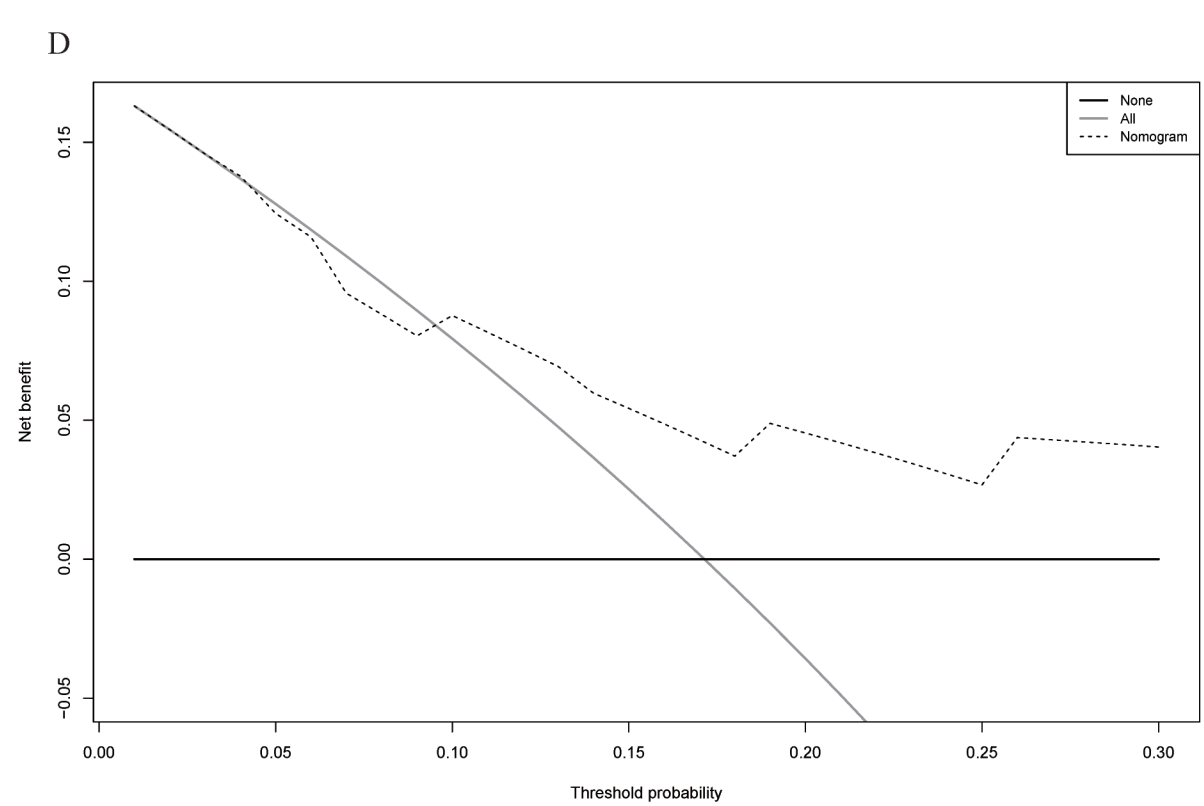
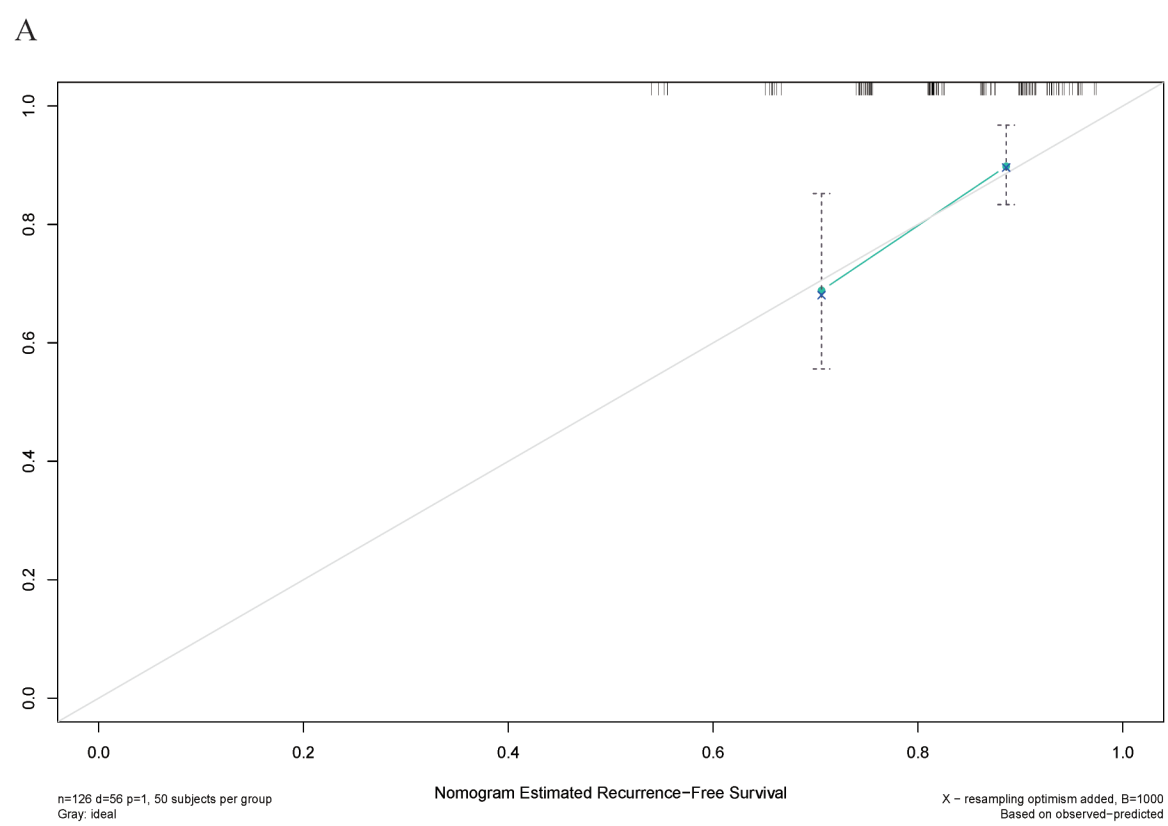


Figure S2. Calibration curves and DCA curves of the nomogram in the validation cohort. A. 1-year calibration curves of the nomogram in the validation cohort. B. 3-year calibration curves of the nomogram in the validation cohort. C. 5-year calibration curves of the nomogram in the validation cohort. D. 1-year DCA curves of the nomogram in the validation cohort. E. 3-year DCA curves of the nomogram in the validation cohort. F. 5-year DCA curves of the nomogram in the validation cohort.

Abbreviations: DCA, decision curve analysis.

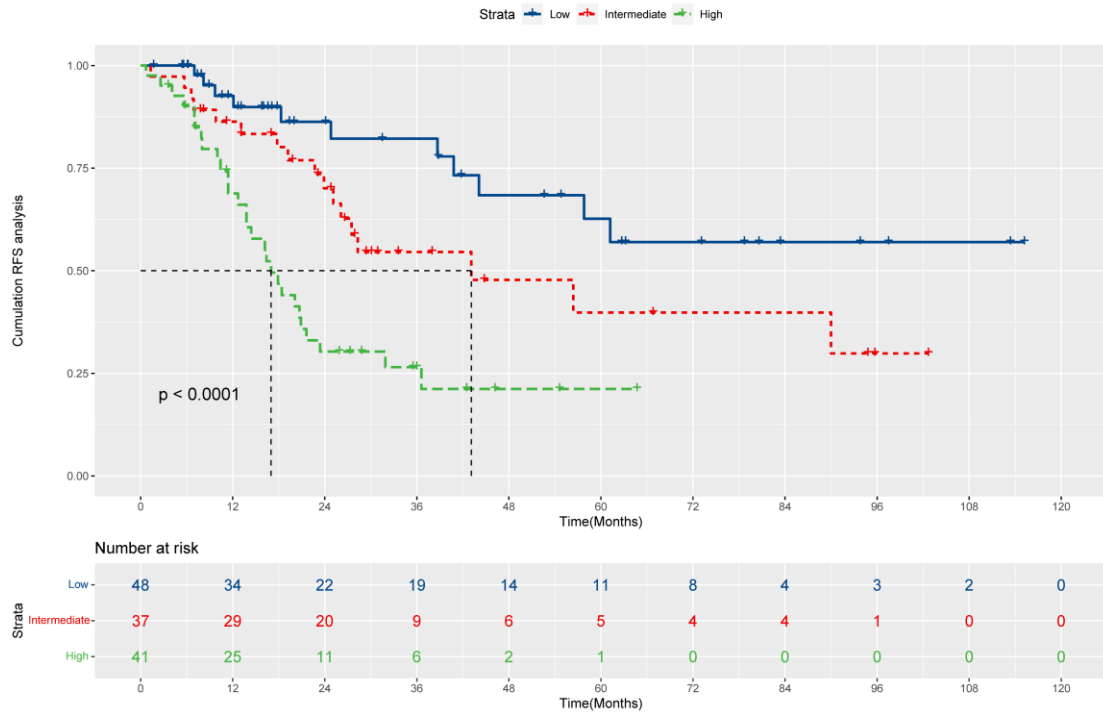


Figure S3. Kaplan-Meier plots of RFS for the low-risk group, intermediate-risk group and high-risk group in the validation cohort.

Abbreviations: RFS, recurrence-free survival;