

Expression profiles of pivotal microRNAs and targets in thyroid papillary carcinoma: an analysis of The Cancer Genome Atlas

Dan Cong¹
Mengzi He²
Silin Chen²
Xiaoli Liu¹
Xiaodong Liu²
Hui Sun¹

¹Jilin Provincial Key Laboratory of Surgical Translational Medicine, Department of Thyroid and Parathyroid Surgery, People's Republic of China–Japan Union Hospital, ²Key Laboratory of Radiobiology (Ministry of Health), School of Public Health, Jilin University, Changchun, Jilin, People's Republic of China

Abstract: In the present study, we analyzed microRNA (miRNA) and gene expression profiles using 499 papillary thyroid carcinoma (PTC) samples and 58 normal thyroid tissues obtained from The Cancer Genome Atlas database. A pivotal regulatory network of 18 miRNA and 16 targets was identified. Upregulated miRNAs (miR-222, miR-221, miR-146b, miR-181a/b/d, miR-34a, and miR-424) and downregulated miRNAs (miR-9-1, miR-138, miR-363, miR-20b, miR-195, and miR-152) were identified. Among them, the upregulation of miR-424 and downregulation of miR-363, miR-195, and miR-152 were not previously identified. The genes *CCNE2* (also known as cyclin E2), *E2F1*, *RARA*, *CCND1* (cyclin D1), *RUNX1*, *ITGA2*, *MET*, *CDKN1A* (p21), and *COL4A1* were overexpressed, and *AXIN2*, *TRAF6*, *BCL2*, *RARB*, *HSP90B1*, *FGF7*, and *PDGFRA* were downregulated. Among them, *CCNE2*, *COL4A1*, *TRAF6*, and *HSP90B1* were newly identified. Based on receiver operating characteristic curves, several miRNAs (miR-222, miR-221, and miR-34a) and genes (*CCND1* and *MET*) were ideal diagnostic indicators, with sensitivities and specificities greater than 90%. The combination of inversely expressed miRNAs and targets improved diagnostic accuracy. In a clinical feature analysis, several miRNAs (miR-34a, miR-424, miR-20b, and miR-152) and genes (*CCNE2*, *COL4A1*, *TRAF6*, and *HSP90B1*) were associated with aggressive clinical features, which have not previously been reported. Our study not only identified a pivotal miRNA regulatory network associated with PTC but also provided evidence that miRNAs and target genes can be used as biomarkers in PTC diagnosis and clinical risk evaluation.

Keywords: thyroid carcinoma, miR-34a, miR-424, miR-20b, miR-152

Introduction

Thyroid carcinoma is the most common endocrine-related malignancy worldwide. According to cell origin and pathological pattern, thyroid carcinomas are normally divided into four types: papillary, follicular, medullary, and anaplastic. The most common type of thyroid carcinoma is papillary thyroid carcinoma (PTC), accounting for 80% of all cases. Thyroid carcinoma is considered a curable disease, but an accurate diagnosis and appropriate risk evaluation are still necessary. Currently, the gold standard for thyroid nodule diagnosis is ultrasound-guided fine-needle aspiration biopsy, achieving correct final diagnoses in 70%–80% of cases; the remaining 20%–30% of cases are considered indeterminate for malignancy.¹ Operative strategy and prognosis are related to risk evaluation. High-risk tumors are often characterized by progressive features such as extrathyroid extension, lymph node metastasis, and distant metastasis.² In these cases, an extended surgery strategy should be performed.

MicroRNAs (miRNAs) are nonprotein-coding, endogenous small RNA molecules. They act as oncogenes as well as tumor suppressors by regulating the expression of

Correspondence: Xiaodong Liu
Key Laboratory of Radiobiology (Ministry of Health), School of Public Health, Jilin University, 1163 Xinmin Street, Changchun 130021, Jilin, People's Republic of China
Email liuxd2014@126.com

Hui Sun
Jilin Provincial Key Laboratory of Surgical Translational Medicine, Department of Thyroid and Parathyroid Surgery, People's Republic of China–Japan Union Hospital, Jilin University, 126 Xiantai Street, Changchun 130033, Jilin, People's Republic of China
Email sunhui1229@163.com

target genes at the posttranscriptional level. There is evidence that miRNAs are involved in thyroid tumorigenesis and progression.^{3–8} In the present study, we analyzed the expression profiles of miRNAs and genes retrieved from The Cancer Genome Atlas (TCGA; <http://cancergenome.nih.gov/>). A pivotal regulatory network of miRNAs associated with PTC was identified. The diagnostic values of miRNAs and genes in the regulatory network were examined, and the results indicated that diagnostic accuracy could be improved by the combination of miRNAs and targets. Furthermore, an association between miRNA and target expression levels and aggressive clinical features was detected.

Materials and methods

TCGA data access

The miRNA expression microarray data (Level 3), RNA expression microarray data (Level 3), and corresponding clinical data for thyroid cancer patients were obtained from TCGA. In total, 499 PTC samples and 58 control samples (paracancerous tissues) with complete miRNA, RNA, and clinical data were selected for inclusion in this study. The expression levels of 1,046 human miRNAs and 20,531 human genes in each sample were assessed using the Illumina's HiSeq system.

TCGA background

TCGA was launched by the National Cancer Institute and the National Human Genome Research Institute in 2006. The program grew to include samples from 11,000 patients across 33 tumor types and currently represents the largest tumor collection, including key genomic and molecular characteristics. Findings for 13 cancer types have already been published, and as of late 2014, TCGA scientists have nearly completed the sequencing of protein-coding regions (exomes) for most tumor types and completed whole-genome sequencing of 1,000 tumor samples. The latter data characterize the complete genomic DNA sequence. Results from TCGA analyses have led to more than 2,700 articles in research journals to date.

Data acquisition

From the TCGA homepage, <http://cancergenome.nih.gov>, the THCA (thyroid carcinoma) page was selected. All miRNAseq, RNAseqV2, and clinical data were chosen, and the Build Archive function was used. The miRNA and RNA expression data are classified as Level 3. In the miRNAseq section, files with the suffixes .miRNA, .quantification, and .txt were selected, and all files in the metadata and clinical sections were examined.

Inclusion and exclusion criteria

The TCGA database consisted of 507 cases of thyroid carcinoma and 59 normal tissue samples. Excluding non-PTC samples and those lacking complete clinical information, 499 PTC samples and 58 normal tissue samples were included in the subsequent analyses.

Microarray analysis

The raw data obtained from miRNA microarrays were normalized to the 75th percentile signal intensity as recommended by the vendor. After normalization, all negative signal values were replaced with 0.01 and the values for multiple replicate spots for each miRNA were summarized as median signals, which were used for statistical analyses.

To identify significantly upregulated and downregulated miRNAs, the pairwise Welch's *t*-test was applied to detect differences between c-Raf-transgenic and non-transgenic animal groups. The significance thresholds for the Welch's *t*-test were set to $P < 0.05$, fold-change [FC] > 2 , and a mean signal of all samples > 50 th percentile. Statistical and hierarchical clustering analyses were implemented in SAM (Significance Analysis of Microarrays) 3.01. In the tables and hierarchical clustering analyses, the FCs gene expression levels are given as signal logarithm ratios with base 2.

Prediction of miRNA target genes

Target mRNAs were predicted using the web tools TargetScan (<http://www.targetscan.org/>) and PITA (<http://genie.weizmann.ac.il/pubs/mir07/index.html>). Both miRNA target prediction programs rely on sequence complementarities of the miRNA seed region (nucleotides 2–7) to the 3'-UTR sequences in candidate target genes. The results of the two analyses are summarized in a Venn diagram.

Statistical analysis

Receiver operating characteristic curves for diagnostic value calculations were estimated using MedCalc 12.1.3.0 software (MedCalc Software, Mariakerke, Belgium). The area under the curve (AUC) represents the diagnostic accuracy for a specific criterion. The criterion is the threshold value for a laboratory test. Criteria listed in the tables are automated threshold values corresponding to the highest AUC values. Expression ratios of miRNAs and targets were calculated following the methods of Gordon et al.⁹ Other statistical analyses were carried out using SPSS 17.0 (SPSS Inc., Chicago, IL, USA). Mann–Whitney *U*-tests were used to identify possible associations between miRNA and target expression levels and clinical features. A *P*-value less than 0.05 was considered statistically significant.

Results

Expression profiles of miRNAs and genes

In total, 48 miRNAs and 2,731 genes were differentially expressed between the 499 PTC samples and 58 normal tissue samples. Of the 48 miRNAs, 18 were upregulated and 30 were downregulated (false discovery rate [FDR] <0.01 and FC>2). Of the 2,731 genes, 1,536 were upregulated and 1,195 were downregulated (FDR <0.01 and FC>2).

Regulatory network of miRNAs in PTC

Using starBase v2.0 (Jianhua Yang, Sun Yat-sen University, 2010–2013) to predict target genes, 30 miRNAs and 277 target genes were successfully predicted (data not shown). After Kyoto Encyclopedia of Genes and Genomes pathway mapping, 16 of 277 genes involved in cancer-related pathways were identified. Corresponding miRNAs were 17 of 30. The expression levels of 17 miRNAs and 16 target genes were visualized and are represented in Figure 1. These miRNAs and target genes were pivotal in PTC because all

of them were differentially expressed by at least twofold and played roles in cancer signaling pathways. The regulatory network is represented in Figure 2.

Diagnostic value of pivotal miRNAs and genes

To determine whether pivotal miRNAs and genes could be used to distinguish PTC from normal samples, receiver operating characteristic curves were applied to calculate diagnostic utility. AUC values, sensitivity, specificity, and the criterion for each miRNA and gene are listed in Tables 1 and 2. The miRNAs miR-222, miR-221, miR-146b, miR-34a, and miR-9-2 showed ideal diagnostic values with respect to AUC, sensitivity, and specificity, each of which was greater than 90%. The *CCND1* and *MET* genes showed ideal diagnostic values with respect to AUC, sensitivity, and specificity, each of which was greater than 90%.

To further improve the diagnostic power of miRNAs and genes, their combinations were examined. Inversely

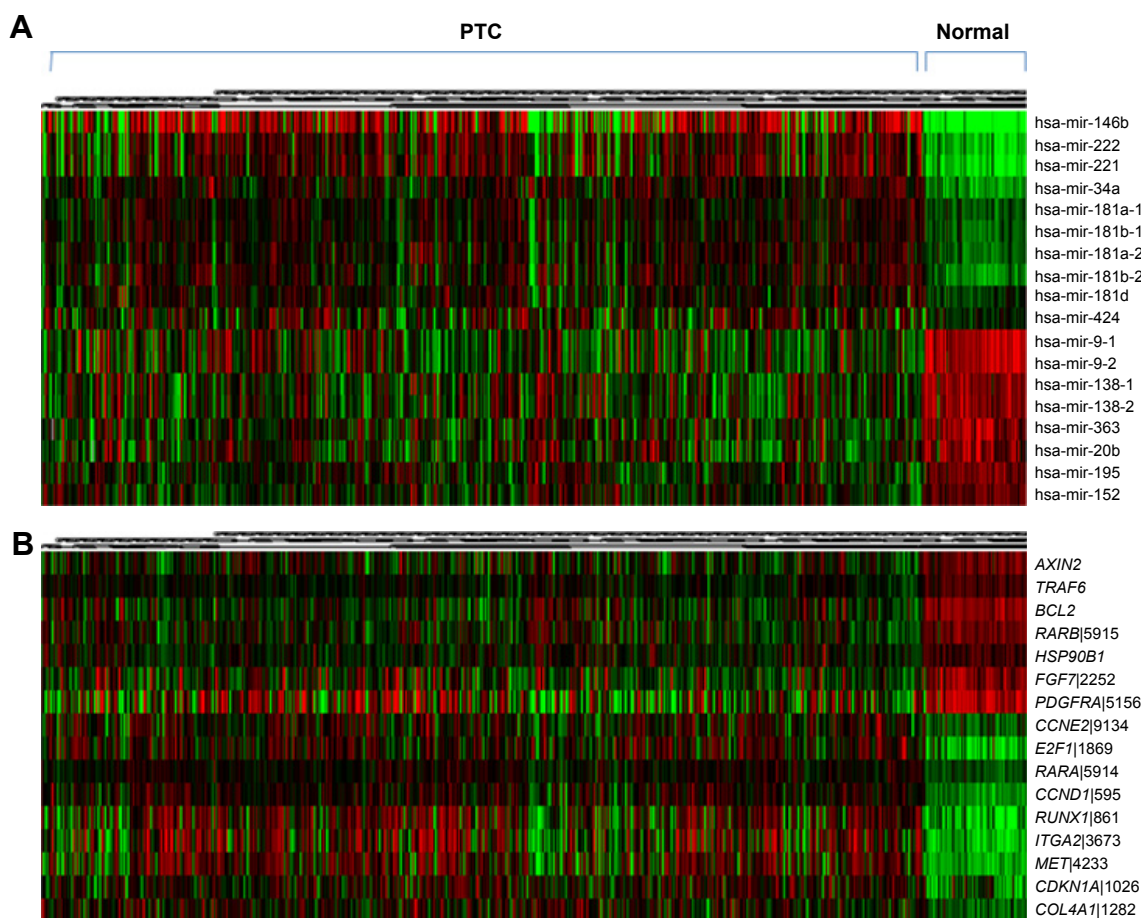


Figure 1 Differential expression of 17 miRNAs (A) and 16 target genes (B) in 499 PTC samples and 58 normal tissue samples retrieved from TCGA.

Note: Red to green indicates decreasing expression levels of individual miRNAs or genes.

Abbreviations: miRNAs, microRNAs; PTC, papillary thyroid carcinoma; TCGA, The Cancer Genome Atlas.

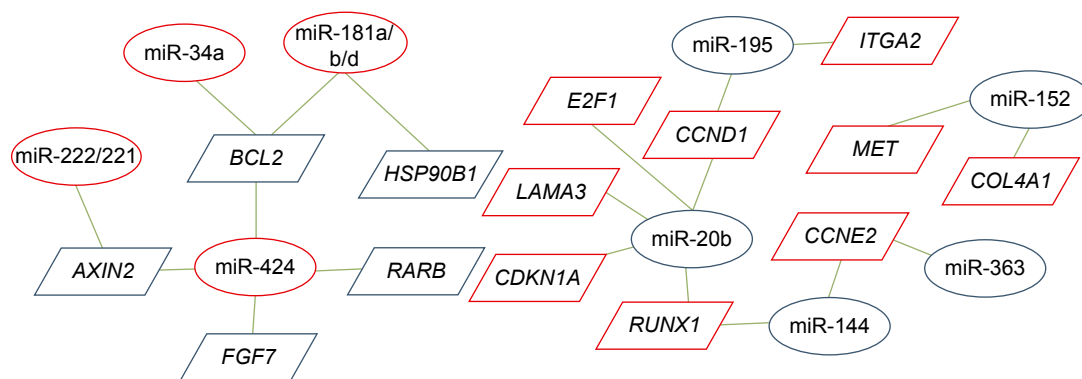


Figure 2 Regulatory network of pivotal miRNAs in PTC.

Notes: Red-marked miRNAs and genes were upregulated and blue-marked miRNAs and genes were downregulated. Key regulatory network nodes were identified, including many genes, such as *AXIN2*, *BCL2*, *CCND1*, *RUNX1*, *CCNE2*, and miRNAs such as miR-424, miR-181a/b/d, miR-20b, miR-195, miR-152, and miR-144. Regulatory networks formed by these key nodes are shown, including the internal relationships among thyroid cancer miRNAs and genes.

Abbreviations: miRNAs, microRNAs; PTC, papillary thyroid carcinoma.

expressed miRNAs and target genes were considered novel markers. The expression ratios were estimated following the methods of Gordon et al.⁹ Consistent with expectations, several miRNA and target combinations improved PTC diagnosis accuracy, as evidenced by the increased AUC value, sensitivity, and specificity. These combination markers are listed in Table 3. Among them, the miR-34a/*BCL2* combination substantially improved diagnostic accuracy (AUC of 0.989, sensitivity of 98.3%, and specificity of 98.4%) compared with miR-34a alone (AUC of 0.944, sensitivity of 0.983, and specificity of 0.984) and *BCL2* alone (AUC of 0.942, sensitivity of 84.5%, and specificity of 93.1%).

Association with high-risk clinical features

In view of the essential roles of miRNAs and genes in the cancer signaling pathway and their use in effective tumor identification, we inferred that they may be related to progressive clinical signatures. We analyzed 499 PTCs and 58 normal tissue samples. Associations between lymph node metastasis (Table 4), miRNA and gene expression levels and extrathyroidal extension (Table 5), and high TNM classification stage (Table 6) were detected. Distant metastasis is commonly considered a high-risk clinical feature. Owing to the limited number of appropriate cases, distant metastasis was not explored in the present study.

The expression levels of miR-146b, miR-222, miR-221, miR-34a, miR-181a, miR-424, miR-138-1, miR-20b, and

Table 1 Diagnostic value of differentially expressed miRNAs

miRNAs	AUC	SEN	SPE	Criterion
miR-221	0.961	91.4	96.6	>503.6685
miR-222	0.958	91.4	94.8	>125.782
miR-146b	0.95	84.5	96.6	>2,194.6538
miR-34a	0.944	91.4	94.8	>178.0286
miR-9-1	0.927	86.2	94.8	<53.4904
miR-144	0.924	94.8	81	<502.158
miR-9-2	0.924	91.4	91.4	<74.6703
miR-181b-2	0.919	86.2	91.4	>13.2275
miR-363	0.916	82.8	87.9	<7.4676
miR-195	0.913	77.6	96.6	<38.8908
miR-181a-2	0.897	87.9	89.7	>2,924.7844
miR-152	0.892	86.2	91.4	<500.1376
miR-138-1	0.883	81.0	94.8	<45.2887
miR-138-2	0.88	75.9	96.6	<28.8837
miR-20b	0.875	79.3	87.9	<11.7008
miR-181b-1	0.872	84.5	81.0	>710.2916

Abbreviations: miRNAs, microRNAs; AUC, area under the curve; SEN, sensitivity (%); SPE, specificity (%).

Table 2 Diagnostic value of differentially expressed genes

Genes	AUC	SEN	SPE	Criterion
<i>CCND1</i>	0.963	91.4	93.1	>5,178.2373
<i>MET</i>	0.942	93.1	91.4	>2,623.9624
<i>BCL2</i>	0.942	84.5	93.1	<2,647.5432
<i>RARB</i>	0.94	82.8	94.8	<226.8591
<i>E2F1</i>	0.936	98.3	79.3	>62.7434
<i>RARA</i>	0.935	91.4	87.9	>747.9881
<i>TRAF6</i>	0.93	84.5	91.4	<182.3617
<i>RUNX1</i>	0.903	69	100	>864.4198
<i>FGF7</i>	0.894	81	93.1	<115.4518
<i>ITGA2</i>	0.89	82.8	96.6	>405.4988
<i>PDGFRA</i>	0.847	74.1	93.1	<235.9651
<i>HSP90B1</i>	0.841	58.6	100	<30,834.7969
<i>AXIN2</i>	0.836	70.7	91.4	<400.454
<i>CCNE2</i>	0.805	81	77.6	>24.1202
<i>COL4A1</i>	0.801	74.1	82.8	>3,715.8176
<i>CDKN1A</i>	0.793	86.2	63.8	>2,494.7954

Abbreviations: AUC, area under the curve; SEN, sensitivity (%); SPE, specificity (%).

Table 3 Diagnostic value of combinations of miRNAs and targets

Combinations	AUC	SEN	SPE	Criterion
miR-34a/BCL2	0.989	98.3	98.4	>0.0731
miR-181b-2/BCL2	0.97	94.8	94.8	>0.0036
miR-221/AXIN2	0.966	94.8	91.4	>0.6077
miR-222/AXIN2	0.963	93.1	94.1	>0.2262
miR-146b/TRAF6	0.962	91.4	93.1	>6.8312
miR-181a-2/BCL2	0.962	91.4	96.6	>1.071
miR-181b-2/HSP90B1	0.942	93	95	>0.0003

Abbreviations: miRNAs, microRNAs; AUC, area under the curve; SEN, sensitivity (%) SPE, specificity (%).

miR-152 were associated with PTC invasion or progression ($P<0.05$). Among them, miR-146b and miR-222 were associated with all high-risk clinical features. miR-181b-1, miR-181a-2, miR-181b-2, miR-181d, miR-9-1, miR-9-2, miR-138-2, and miR-195 did not show a relationship with PTC invasion or progression.

The expression levels of *AXIN2*, *TRAF6*, *BCL2*, *RARB*, *HSP90B1*, *PDGFRA*, *RARA*, *RUNX1*, *ITGA2*, *MET*, and *CDKN1A* were associated with high-risk clinical features. Among them, *AXIN2*, *TRAF6*, *BCL2*, *HSP90B1*, *PDGFRA*, *RUNX1*, and *MET* were correlated with all high-risk clinical features. *FGF7*, *CCNE2*, *E2F1*, *CCND1*, and *COL4A1* showed no relationship with PTC invasion or progression.

Discussion

The high incidence of thyroid disease in the population is problematic. As many as 50% of individuals have microscopic nodules, 3.5% have occult papillary carcinoma, and 15% have palpable goiters.¹⁰ Currently, ultrasound-guided fine-needle aspiration biopsy is the most reliable method for

Table 4 Associations between miRNAs and genes with lymph node metastasis

miRNA/gene	Lymph node metastasis (+)	Lymph node metastasis (-)	P-value
miR-146b	3.09 (2.78–3.16)*	2.97 (2.47–3.14)	0.024
miR-222	2.75 (2.62–2.90)	2.65 (2.41–2.84)	0.000
miR-221	3.31 (3.14–3.41)	3.23 (2.97–3.42)	0.004
miR-181a-1	3.78 (3.68–3.91)	3.72 (3.59–3.88)	0.005
miR-152	2.43 (2.30–2.53)	2.48 (2.31–2.68)	0.005
<i>AXIN2</i>	2.39 (2.19–2.60)	2.47 (2.26–2.67)	0.044
<i>TRAF6</i>	2.14 (2.05–2.22)	2.17 (2.08–2.25)	0.048
<i>BCL2</i>	2.92 (2.73–3.06)	3.03 (2.87–3.06)	0.000
<i>HSP90B1</i>	4.42 (4.31–4.57)	4.47 (4.36–4.67)	0.029
<i>PDGFRA</i>	2.24 (1.93–2.58)	1.98 (1.54–2.39)	0.000
<i>RARA</i>	3.09 (3.03–3.17)	3.04 (2.93–3.12)	0.000
<i>RUNX1</i>	3.15 (2.99–3.31)	3.03 (2.68–3.21)	0.000
<i>MET</i>	4.11 (3.93–4.22)	4.00 (3.57–4.17)	0.000

Note: *Original expressing data were log transformed.

Abbreviation: miRNAs, microRNAs.

Table 5 Associations between miRNAs and genes with extra-thyroid extension

miRNA/gene	Extrathyroidal extension (+)	Extrathyroidal extension (-)	P-value
miR-146b	4.49 (4.21–4.65)	4.30 (3.45–4.62)	0.000
miR-222	2.72 (2.60–2.86)	2.63 (2.39–2.82)	0.000
miR-221	3.31 (3.12–3.46)	3.21 (2.95–3.39)	0.000
miR-34a	2.68 (2.50–2.84)	2.61 (2.45–2.79)	0.013
miR-424	2.53 (2.29–2.76)	2.64 (2.38–2.84)	0.009
miR-138-1	1.26 (1.10–1.54)	1.38 (1.19–1.60)	0.005
miR-20b	0.72 (0.56–1.06)	0.98 (0.66–1.19)	0.000
miR-152	2.45 (2.32–2.58)	2.49 (2.32–2.72)	0.014
<i>AXIN2</i>	2.36 (2.18–2.55)	2.51 (2.31–2.69)	0.000
<i>TRAF6</i>	2.14 (2.05–2.20)	2.18 (2.11–2.27)	0.000
<i>BCL2</i>	2.89 (2.74–3.06)	3.06 (2.90–3.33)	0.000
<i>RARB</i>	2.06 (1.91–2.21)	2.19 (1.97–2.43)	0.000
<i>HSP90B1</i>	4.39 (4.30–4.52)	4.52 (4.38–4.65)	0.000
<i>PDGFRA</i>	2.24 (1.90–2.58)	1.96 (1.47–2.39)	0.000
<i>RARA</i>	3.09 (3.12–3.06)	3.04 (2.93–3.03)	0.000
<i>RUNX1</i>	3.19 (2.95–3.33)	2.99 (2.58–3.17)	0.000
<i>ITGA2</i>	3.28 (2.85–3.5)	2.92 (2.63–3.27)	0.000
<i>MET</i>	4.13 (3.95–4.27)	3.96 (3.55–4.15)	0.000
<i>CDKN1A</i>	3.80 (3.63–3.96)	3.74 (3.54–3.90)	0.019

Abbreviation: miRNAs, microRNAs.

detecting thyroid nodules. However, definitive diagnoses still cannot be made for 20%–30% of cases.¹ Therefore, additional methods that improve the sensitivity and specificity of diagnosis are highly desirable. Molecular markers such as BRAF, RAS, RET/PTC, PAX8/PPAR γ , and galectin-3 may be considered for indeterminate cytology according to the American Thyroid Association guidelines.¹¹ Overcoming the challenges of accurate assessments of the risk for individual patients is important to establish appropriate treatment plans and optimize outcomes. An increasing number of mutations in thyroid tumors from low grade to high grade have been

Table 6 Association between miRNAs and genes with later tumor stage

miRNA/gene	III/IV stage	I/II stage	P-value
miR-146b	4.49 (4.08–4.68)	4.31 (3.58–4.61)	0.001
miR-222	2.70 (2.52–2.85)	2.64 (2.38–2.83)	0.012
miR-34a	2.69 (2.50–2.84)	2.61 (2.45–2.76)	0.004
miR-424	2.53 (2.28–2.77)	2.63 (2.38–2.84)	0.014
miR-138-1	1.27 (1.13–1.57)	1.38 (1.18–1.64)	0.045
miR-20b	0.82 (0.56–1.9)	0.95 (0.67–1.16)	0.01
<i>AXIN2</i>	2.38 (2.20–2.61)	2.49 (2.30–2.67)	0.005
<i>TRAF6</i>	2.14 (2.05–2.20)	2.18 (2.11–2.26)	0.000
<i>BCL2</i>	2.94 (2.75–3.11)	3.06 (2.89–3.30)	0.000
<i>RARB</i>	2.09 (1.92–2.32)	2.18 (1.97–2.39)	0.004
<i>HSP90B1</i>	4.40 (4.30–4.55)	4.52 (4.38–4.66)	0.000
<i>PDGFRA</i>	2.22 (1.77–2.56)	1.96 (1.55–2.39)	0.002
<i>RUNX1</i>	3.14 (2.88–2.28)	2.99 (2.67–3.20)	0.000
<i>MET</i>	4.06 (3.86–4.21)	3.97 (3.54–4.17)	0.001

Abbreviation: miRNAs, microRNAs.

reported, indicating frequent recurrence and death.¹² In this context, molecular markers would facilitate tumor stage identification and risk stratification, assisting clinicians in determining appropriate treatment strategies, and in clinical monitoring.

miRNAs play important roles in multiple biological and metabolic processes, such as cell differentiation, proliferation, survival, and malignancy.^{13,14} Although numerous miRNAs involved in PTC have been identified, the global regulation of miRNAs in PTC remains unclear. In our study, we identified a pivotal regulatory network of miRNAs associated with PTC. All differentially expressed miRNAs and genes were screened using as many as 547 samples obtained from TCGA. Targeting relationships were reliable based on successful predictions by multiple common programs. All target genes played roles in cancer-related pathways. In all, 18 miRNAs and 20 target genes were core and vital in the regulation of PTC. Among the regulatory relationships, miR-146b targeting *TRAF6*, miR-222 targeting *AXIN2*, miR-181a/b targeting *BCL2*, miR-424 targeting *BCL2*, miR-34a targeting *PDGFRA* and *BCL2*, miR-138 targeting *RARA*, miR-20b targeting *CCND1* (also known as cyclin D1) and *RUNX1*, miR-195 targeting *CCND1*, and miR-152 targeting *MET* have been previously reported.^{15–22} miR-181a/b targeting *HSP90B1*, miR-424 targeting *AXIN2/RARB/FGF7*, miR-181d targeting *BCL2* and *HSP90B1*, miR-144 targeting *RUNX1* and *CCNE2* (also known as cyclin E2), miR-363 targeting *CCNE2*, miR-195 targeting *ITGA2*, miR-20 targeting *LAMA3/CDKN1A* (also known as p21)/*E2F1*, and miR-152 targeting *COL4A1* are newly identified.

Next, we sought to evaluate the diagnostic ability of the miRNAs and targets. The miRNAs miR-221, miR-222, miR-34a, and miR-9-2 displayed ideal diagnostic values based on the AUCs, sensitivities, and specificities greater than 90%. The *CCND1* and *MET* genes displayed ideal diagnostic values. All had potential use in PTC diagnosis for indefinite cases. Some studies have indicated that miRNA–target combinations can improve diagnostic accuracy;^{9,23} accordingly, we determined combinations based on miRNAs and targets with opposing expression patterns. Several combinations of miRNAs and targets showed higher diagnostic values compared with single factors. Particularly, the miR-34a/*BCL2* combination had an AUC value of 0.989, sensitivity of 98.3%, and specificity of 98.4% for certain criterion (expression ratio >0.0731), which indicates that they are suitable tumor markers. Our results provide a novel combination method to improve diagnostic accuracy and can be validated in a wide range of cancer types.

Thyroid tumor markers are often related to high-risk clinical features and indicate poor prognosis.^{12,24} In the present study, we examined the associations between all pivotal miRNAs and genes and aggressive factors, including lymph node metastasis, extrathyroidal extension, and late-stage tumors. Nine of 17 miRNAs and eleven of 17 target genes were associated with at least one high-risk clinical feature. Clinical associations involving miR-221, miR-222, miR-146b, and miR-138-1 were supported by previous studies.^{25–27} miR-34a, miR-424, miR-20b, and miR-152, which played roles in PTC progression and invasion, have not been previously reported. Differential expression of *CCND1*, *BCL2*, *MET*, *E2F1*, *RUNX1*, *ITGA2*, *RARA*, *PDGFRA*, and *CDKN1A* has been demonstrated for aggressive PTC in other studies.^{28–36} Our study is the first to identify the association between *AXIN2*, *HSP90B1*, and *CDKN1A* and aggressive clinical features. The aberrant expression levels of miRNAs and genes identified in the present study can be used as diagnostic markers as well as treatment targets.

We identified novel miRNAs for PTC diagnosis and associations with aggression. Biofunction experiments and clinical validation of these miRNAs are our next goals to confirm their significance in PTC.

Conclusion

In summary, we identified a set of pivotal thyroid cancer-related miRNAs and genes. Several novel targeting relationships were discovered. Many of these miRNAs and genes displayed potential value for the early diagnosis of PTC. Combinations of inversely expressed miRNAs and targets further improved the observed diagnostic accuracy. Based on their roles in the cancer pathway and clinical examinations, most of the miRNAs and genes in the present study were related to high-risk clinical features, indicating their potential use for risk stratification and prognosis for PTC patients. Our study indicates potential clinical applications of the miRNAs and genes for diagnosis, prognosis, and targeted treatment in thyroid malignant disease.

Disclosure

The authors report no conflicts of interest in this work.

References

1. Rumyantsev PO, Saenko VA, Ilyin AA, et al. Radiation exposure does not significantly contribute to the risk of recurrence of Chernobyl thyroid cancer. *J Clin Endocrinol Metab.* 2011;96(2):385–393.
2. Schneider DF, Chen H. New developments in the diagnosis and treatment of thyroid cancer. *CA Cancer J Clin.* 2013;63(6):374–394.
3. Lee JC, Gundara JS, Glover A, Serpell J, Sidhu SB. MicroRNA expression profiles in the management of papillary thyroid cancer. *Oncologist.* 2014;19(11):1141–1147.

4. Pallante P, Battista S, Pierantoni GM, Fusco A. Deregulation of microRNA expression in thyroid neoplasias. *Nat Rev Endocrinol*. 2014; 10(2):88–101.
5. Minna E, Romeo P, De Cecco L, et al. miR-199a-3p displays tumor suppressor functions in papillary thyroid carcinoma. *Oncotarget*. 2014; 5(9):2513–2528.
6. Rossing M, Borup R, Henao R, et al. Down-regulation of microRNAs controlling tumorigenic factors in follicular thyroid carcinoma. *J Mol Endocrinol*. 2012;48(1):11–23.
7. Hébrant A, Floor S, Saiselet M, et al. miRNA expression in anaplastic thyroid carcinomas. *PLoS One*. 2014;9(8):e103871.
8. Yip L, Kelly L, Shuai Y, et al. MicroRNA signature distinguishes the degree of aggressiveness of papillary thyroid carcinoma. *Ann Surg Oncol*. 2011;18(7):2035–2041.
9. Gordon GJ, Jensen RV, Hsiao LL, et al. Translation of microarray data into clinically relevant cancer diagnostic tests using gene expression ratios in lung cancer and mesothelioma. *Cancer Res*. 2002;62(17): 4963–4967.
10. Wang C, Crapo LM. The epidemiology of thyroid disease and implications for screening. *Endocrinol Metab Clin North Am*. 1997;26(1): 189–218.
11. American Thyroid Association (ATA) Guidelines Taskforce on Thyroid Nodules and Differentiated Thyroid Cancer; Cooper DS, Doherty GM, et al. Revised American Thyroid Association management guidelines for patients with thyroid nodules and differentiated thyroid cancer. *Thyroid*. 2009;19(11):1167–1214.
12. Xing M, Haugen BR, Schlumberger M. Progress in molecular-based management of differentiated thyroid cancer. *Lancet*. 2013;381(9871): 1058–1069.
13. Michael MZ, O'Connor SM, van Holst Pellekaan NG, Young GP, James RJ. Reduced accumulation of specific microRNAs in colorectal neoplasia. *Mol Cancer Res*. 2003;1(12):882–891.
14. Calin GA, Ferracin M, Cimmino A, et al. A microRNA signature associated with prognosis and progression in chronic lymphocytic leukemia. *N Engl J Med*. 2005;353(17):1793–1801.
15. Liu X, He M, Hou Y, et al. Expression profiles of microRNAs and their target genes in papillary thyroid carcinoma. *Oncol Rep*. 2013;29(4): 1415–1420.
16. Zhu Y, Wu J, Li S, et al. The function role of miR-181a in chemosensitivity to adriamycin by targeting Bcl-2 in low-invasive breast cancer cells. *Cell Physiol Biochem*. 2013;32(5):1225–1237.
17. Llobet-Navas D, Rodríguez-Barrueco R, Castro V, et al. The miR-424(322)/503 cluster orchestrates remodeling of the epithelium in the involuting mammary gland. *Genes Dev*. 2014;28(7):765–782.
18. Wang X, Tan L, Lu Y, et al. MicroRNA-138 promotes tau phosphorylation by targeting retinoic acid receptor alpha. *FEBS Lett*. 2015; 589(6):726–729.
19. Hui W, Yuntao L, Lun L, et al. MicroRNA-195 inhibits the proliferation of human glioma cells by directly targeting cyclin D1 and cyclin E1. *PLoS One*. 2013;8(1):e54932.
20. Ghosh T, Aprea J, Nardelli J, et al. MicroRNAs establish robustness and adaptability of a critical gene network to regulate progenitor fate decisions during cortical neurogenesis. *Cell Rep*. 2014;7(6):1779–1788.
21. Rao R, Nagarkatti P, Nagarkatti M. Role of miRNA in the regulation of inflammatory genes in staphylococcal enterotoxin B-induced acute inflammatory lung injury and mortality. *Toxicol Sci*. 2015;144(2): 284–289.
22. Tsuruta T, Kozaki K, Uesugi A, et al. miR-152 is a tumor suppressor microRNA that is silenced by DNA hypermethylation in endometrial cancer. *Cancer Res*. 2011;71(20):6450–6462.
23. He M, Zhao Y, Yi H, Sun H, Liu X, Ma S. The combination of TP53INP1, TP53INP2 and AXIN2: potential biomarkers in papillary thyroid carcinoma. *Endocrine*. 2015;48(2):712–717.
24. Liu X, Qu S, Liu R, et al. TERT promoter mutations and their association with BRAF V600E mutation and aggressive clinicopathological characteristics of thyroid cancer. *J Clin Endocrinol Metab*. 2014;99(6): E1130–E1136.
25. Chou CK, Chen RF, Chou FF, et al. miR-146b is highly expressed in adult papillary thyroid carcinomas with high risk features including extrathyroidal invasion and the BRAF(V600E) mutation. *Thyroid*. 2010;20(5): 489–494.
26. He H, Jazdzewski K, Li W, et al. The role of microRNA genes in papillary thyroid carcinoma. *Proc Natl Acad Sci U S A*. 2005;102(52): 19075–19080.
27. Santarpia L, Calin GA, Adam L, et al. A miRNA signature associated with human metastatic medullary thyroid carcinoma. *Endocr Relat Cancer*. 2013;20(6):809–823.
28. Wang S, Lloyd RV, Hutzler MJ, Safran MS, Patwardhan NA, Khan A. The role of cell cycle regulatory protein, cyclin D1, in the progression of thyroid cancer. *Mod Pathol*. 2000;13(8):882–887.
29. Selemetjev SA, Savin SB, Paunovic IR, Tatic SB, Cvejić D. Changes in the expression pattern of apoptotic molecules (galectin-3, Bcl-2, Bax, survivin) during progression of thyroid malignancy and their clinical significance. *Wien Klin Wochenschr*. 2015;127(9–10):337–344.
30. Koo BS, Kim JM, Seo ST, et al. Upregulation of HGF and c-MET is associated with subclinical central lymph node metastasis in papillary thyroid microcarcinoma. *Ann Surg Oncol*. 2014;21(7):2310–2317.
31. Onda M, Nagai H, Yoshida A, et al. Up-regulation of transcriptional factor E2F1 in papillary and anaplastic thyroid cancers. *J Hum Genet*. 2004; 49(6):312–318.
32. Macejová D, Galbavý S, Podoba J, Bialešová L, Brtko J. mRNA expression pattern of retinoic acid and retinoid X nuclear receptor subtypes in human thyroid papillary carcinoma. *Oncol Rep*. 2013;30(5): 2371–2378.
33. Fujarewicz K, Jarzab M, Eszlinger M, et al. A multi-gene approach to differentiate papillary thyroid carcinoma from benign lesions: gene selection using support vector machines with bootstrapping. *Endocr Relat Cancer*. 2007;14(3):809–826.
34. Yang Z, Yuan Z, Fan Y, Deng X, Zheng Q. Integrated analyses of microRNA and mRNA expression profiles in aggressive papillary thyroid carcinoma. *Mol Med Rep*. 2013;8(5):1353–1358.
35. Zhang J, Wang P, Dykstra M, et al. Platelet-derived growth factor receptor- α promotes lymphatic metastases in papillary thyroid cancer. *J Pathol*. 2012;228(2):241–250.
36. Zhang J, Gill AJ, Issacs JD, et al. The Wnt/ β -catenin pathway drives increased cyclin D1 levels in lymph node metastasis in papillary thyroid cancer. *Hum Pathol*. 2012;43(7):1044–1050.

OncoTargets and Therapy

Publish your work in this journal

OncoTargets and Therapy is an international, peer-reviewed, open access journal focusing on the pathological basis of all cancers, potential targets for therapy and treatment protocols employed to improve the management of cancer patients. The journal also focuses on the impact of management programs and new therapeutic agents and protocols on

Submit your manuscript here: <http://www.dovepress.com/oncotargets-and-therapy-journal>

Dovepress

patient perspectives such as quality of life, adherence and satisfaction. The manuscript management system is completely online and includes a very quick and fair peer-review system, which is all easy to use. Visit <http://www.dovepress.com/testimonials.php> to read real quotes from published authors.