

# Minimally invasive prostate cancer detection test using FISH probes

Rima Tinawi-Aljundi<sup>1</sup>  
 Shannon T Knuth<sup>2</sup>  
 Michael Gildea<sup>2</sup>  
 Joshua Khal<sup>2</sup>  
 Jason Hafron<sup>1</sup>  
 Kenneth Kernen<sup>1</sup>  
 Robert Di Loreto<sup>1</sup>  
 Joan Aurich-Costa<sup>2</sup>

<sup>1</sup>Pathology and Research Department, Michigan Institute of Urology, St Clair Shores, MI, USA;

<sup>2</sup>Research and Development, Cellay, Inc., Cambridge, MA, USA

**Purpose:** The ability to test for and detect prostate cancer with minimal invasiveness has the potential to reduce unnecessary prostate biopsies. This study was conducted as part of a clinical investigation for the development of an OligoFISH<sup>®</sup> probe panel for more accurate detection of prostate cancer.

**Materials and methods:** One hundred eligible male patients undergoing transrectal ultrasound biopsies were enrolled in the study. After undergoing digital rectal examination with pressure, voided urine was collected in sufficient volume to prepare at least two slides using ThinPrep. Probe panels were tested on the slides, and 500 cells were scored when possible. From the 100 patients recruited, 85 had more than 300 cells scored and were included in the clinical performance calculations.

**Results:** Chromosomes Y, 7, 10, 20, 6, 8, 16, and 18 were polysomic in most prostate carcinoma cases. Of these eight chromosomes, chromosomes 7, 16, 18, and 20 were identified as having the highest clinical performance as a fluorescence in situ hybridization test and used to manufacture the fluorescence in situ hybridization probe panels. The OligoFISH<sup>®</sup> probes performed with 100% analytical specificity. When the OligoFISH<sup>®</sup> probes were compared with the biopsy results for each individual, the test results highly correlated with positive and negative prostate biopsy pathology findings, supporting their high specificity and accuracy. Probes for chromosomes 7, 16, 18, and 20 showed in the receiver operator characteristics analysis an area under the curve of 0.83, with an accuracy of 81% in predicting the biopsy result.

**Conclusion:** This investigation demonstrates the ease of use with high specificity, high predictive value, and accuracy in identifying prostate cancer in voided urine after digital rectal examination with pressure. The test is likely to have positive impact on clinical practice and advance approaches to the detection of prostate cancer. Further evaluation is warranted.

**Keywords:** prostate cancer detection, OligoFISH<sup>®</sup>, oncology, PSA screening

## Introduction

Prostate cancer is the most common nondermatologic malignancy of males in the United States. In 2015, there were approximately 221,000 new cases of prostate cancer, and more than 27,000 of the men died.<sup>1</sup> Approximately 2.9 million American men are living with prostate cancer.<sup>2</sup> Lifetime risk of developing prostate cancer is 14% (2010–2012 data<sup>1</sup>), while lifetime risk of dying from the disease is 2.8% or 1 in 38.<sup>3</sup> Risk factors include age (>75% of prostate cancer diagnosed in men >65); African-American and Caribbean-African ancestry (1.6 times more likely to develop prostate cancer; 2.4 times more likely to die compared to Caucasians); geography; positive family history for prostate cancer; mutations of *BRCA1* or *BRCA2* genes and presence of hereditary nonpolyposis colorectal cancer, or HNPCC/Lynd Syndrome; high

Correspondence: Joan Aurich-Costa  
 Cellay, Inc., 100 Inman Street, Cambridge,  
 MA 02139, USA  
 Tel +1 617 995 1300 Ext 336  
 Fax +1 617 995 1304  
 Email joan.aurich@cellayinc.com

red meat or high-fat dairy consumption; obesity; smoking, workplace exposures; and prostatitis.<sup>4-7</sup>

Prostate-specific antigen (PSA) testing with risk stratification based on serum levels forms the basis for early detection of prostate cancer.<sup>8</sup> However, given falsely elevated PSA levels occurring in common clinical conditions<sup>9</sup> and that transrectal biopsies, which only sample a small part of the gland, result in a high rate of false negatives,<sup>4,10,11</sup> considerable debate and disagreement exist around PSA screening. The most recent American Urological Association (AUA) guidelines state that PSA screening should be done every 2 years or more with greatest benefit for men aged 55–69 years, whereas the US Prevention Services Task Force position is that mortality reduction is marginal, even in the “optimal age range of 55–69 years”<sup>12</sup> and that the “potential harms do not outweigh the benefits.”<sup>12</sup> In addition, these interventions are associated with significant health care costs. For the Medicare population aged >65 years, PSA screening expenditures and follow-up associated interventions, including prostate biopsy, were \$125 Billions in 2010, and estimated to exceed \$158 Billions (in 2010 dollars) annually by 2020.<sup>13,14</sup> Expanding health care expenditures and on-going uncertainties related to available early prostate cancer screening approaches support evaluation of new methods including DNA analyses, molecular urine testing, and fluorescence in situ hybridization (FISH).<sup>15-17</sup>

FISH uses principles of high affinity molecular or biological targets, minimizing nonspecific cellular uptake and retention where tumor cell levels are low or difficult to detect by standard methodologies.<sup>18-23</sup> Whole chromosome gains are the most frequently identified change in malignant cells, and extensive research validates aneuploidy as a biomarker of cancer.<sup>23</sup> Research on these OligoFISH<sup>®</sup> probes is enabled through the use of the Mitelman Database of Chromosome Aberrations and Gene Fusions in Cancer, whereby highly sensitive and specific probes for both high- and low-grade tumors can be developed.<sup>24,25</sup>

The goal of this study was to develop a noninvasive prostate cancer detection method that would predict the findings from prostate cancer using OligoFISH<sup>®</sup> probes for aneuploidy detection in male volunteers undergoing prostate evaluation in voided urine after a digital rectal examination (DRE) with pressure.

## Materials and methods

### Sample collection and OligoFISH<sup>®</sup> procedure

Patients undergoing prostate cancer surveillance by scheduled DRE with pressure and biopsy were recruited for the study. The study protocol was approved by the Western Independent Review Board. All subjects were informed of

the procedures and risks of the study and provided informed consent.

On the day of biopsy, the urologist performed a DRE with pressure. Prostate lobes were stroked through the rectum three times with approximately 1 cm depression. The lobes were stroked from base to apex and from lateral to median line including a final stroke on median line from base to apex to empty prostatic fluid into the urethra. Subjects were asked to provide 40–80 mL of voided urine, including first stream. Preservative was added to the urine (2:1 urine:preservative) to prevent bacterial growth and preserve cells and DNA (PreservCyt; Hologic, Inc., Bedford, MA, USA). Samples were stored at 4°C for no longer than 48 hours before urothelial cells were washed in CytoLyt (Hologic, Inc. Bedford, MA, USA.), and the slides were prepared. Urothelial slides were prepared using ThinPrep machines (Hologic, Inc.) following manufacturer’s instructions. Slides were partially digested in IsoThermal Protease (Cellay, Inc., Cambridge, MA, USA) at room temperature for 15 minutes, followed by 5-minute incubation in Detergent Solution (Cellay, Inc.). Cells were lightly fixed for 5 minutes in 1% formaldehyde and rinsed in phosphate-buffered saline. Cellular DNA was denatured in IsoThermal Denaturing Solution (Cellay, Inc.) at room temperature for 10 minutes. Slides were dehydrated in 85% and 100% alcohol for 1 minute each and air dried. Slides were hybridized with 3 µL of OligoFISH<sup>®</sup> probe mix (chromosomes Y, 6, 8 and 10), coverslips applied, and incubated for 10 minutes at 37°C. Slides were washed in 2× SSC (saline sodium citrate) under agitation to float off the coverslips and then incubated in IsoThermal Wash Solution (2× SSC and Isothermal Denaturing Reagent) for 5 minutes at room temperature to remove unbound or nonspecifically hybridized probes. Slides were rinsed in 2× SSC and mounted with Antifade with 4',6-diamidino-2-phenylindole dihydrochloride and analyzed with an epifluorescence microscope. Each specimen was scored for 500 cells. The only cells excluded from analysis were the easily recognizable polymorph nucleated white blood cells and sperm cells.

Once the slides were scored, they were washed in 2× SSC 0.1% sodium dodecyl sulfate to remove coverslips and Antifade and denatured again for 5 minutes to strip the probes. Slides were then hybridized with the second probe panel for the detection of chromosomes 7, 16, 18, and 20. Five hundred cells were scored for each sample.

### Determining the number of prostate cells in urine samples

Proportion of prostatic cells in urine samples of the first ten subjects was obtained through cytology to determine

the percentage of prostate cells. Up to 500 cells were scored and categorized as prostatic or urothelial using nuclear:cytoplasmic ratio. Potential prostate cells were identified by their small size compared to urothelial, high ratio nucleus/cytoplasm, and eccentric position of the nucleus. Cells with polylobulated nucleus, presumed to be white blood cells, were excluded as were identifiable sperm cells.

The samples were processed using this methodology, and following these morphological criteria, 500 cells were classified as belonging to the urothelium or to the prostate.

## Analytical performance of the four chromosome OligoFISH® probe panel

Analytical performance of the OligoFISH® panels was validated based on schema previously described for hybridizing probes.<sup>18</sup> In brief, the probe panel was validated against normal blood cells in metaphase from five chromosomally normal individuals to determine analytical specificity and sensitivity.

## Clinical performance

### Comparison of OligoFISH® prostate test and the pathology results

By comparing biopsy pathology results for the presence of cancer to the OligoFISH® results, the true positives, true negatives, false positives, and false negatives were determined, and the clinical performance of the OligoFISH® assay was calculated. Because the data do not follow a Gaussian distribution, the interval at 95% confidence was calculated using the Clopper–Pearson method.<sup>26</sup>

### Receiver operator characteristics (ROC) curves

By varying the normal cut-off (NCO) from zero polysomic cells to the maximum percentage observed, we were able to calculate true positives, true negatives, false positives, false negatives, sensitivity, specificity, 1-specificity, positive predictive value (PPV), negative predictive value (NPV), accuracy, and Youden's index (*J*) on every cut-off value. This calculation was performed at every cut-off value for each one of the two 4 chromosome panels, as well as for the individual chromosomes. Sensitivity against 1-specificity was plotted, and the area under the curve (AUC) was calculated using Prism 6 for Windows (version 6.02; GraphPad Software, Inc., La Jolla, CA, USA). For every probe panel as well as the individual chromosomes, the Youden's index was used to determine the best NCO. AUC was used to determine the power of differentiating between benign and cancer of each one of the probe panels and the chromosomes.

## Results

One hundred subjects were enrolled in the study. Mean age was 68.8 years (standard deviation [SD]  $\pm 8.4$ ); 21% were African American, non-Hispanic and the remainder were Caucasian, non-Hispanic. Voided urine samples after DRE with pressure were collected from each patient, and 500 cells were scored in each sample when possible.

## Analytical performance of the four chromosome OligoFISH® probe panel

OligoFISH® probes performed with 100% analytical specificity and >98% analytical sensitivity (Table 1), consistent with what the probes are designed to provide as a rapid test that targets only specific parts of the chromosome and exceeding the recommendations by the American College of Genetic Medicine<sup>27</sup> as well as most traditional FISH probes. Figure 1 illustrates the correct location of both OligoFISH® probe panels.

## Presence of prostate cells in urine samples

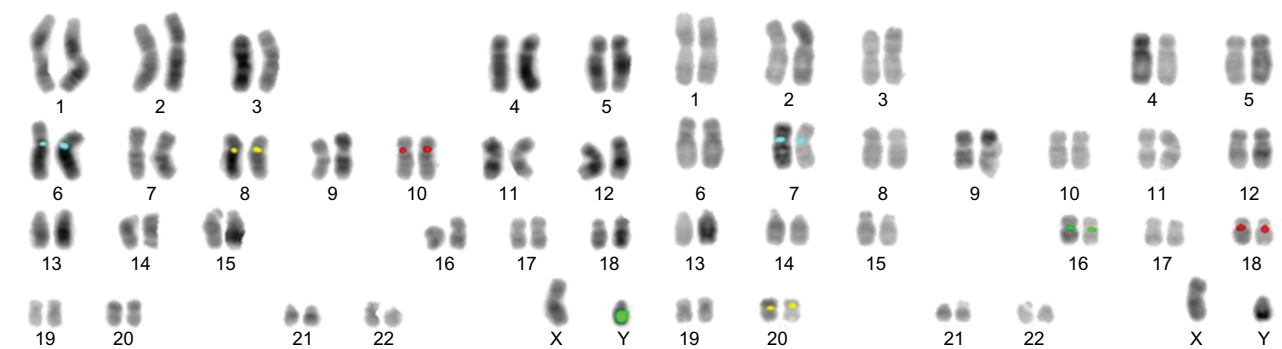
Urine samples were successfully collected after DRE with pressure. When 500 cells were scored and classified as prostatic or not according to their morphology, an average of  $65\% \pm 9.1\%$  prostatic cells was found; the range was 40.0%–83%. Urine samples collected without DRE with pressure were found to contain almost no prostatic epithelial cells (results not shown), demonstrating that DRE with pressure is crucial for performing the test.

## Clinical performance

When possible, 500 cells were scored on each slide after the first hybridization and again after the second hybridization. If less than 300 cells were scored, the subject was excluded from the calculations; this reduced our sample from 100 subjects to 85. The results for each kit were combined for each subject to determine the clinical validity of the eight chromosomes together.

**Table 1** Analytical sensitivity of OligoFISH® probes

Chromosome probe	Fluorochrome	Analytical sensitivity (%)	Margin of error, 95% (%)
Yq12	Green	99.5	0.95
6	Aqua	99.5	0.95
8	Gold	99.5	0.95
10	Red	99.1	1.30
7	Aqua	99.0	1.38
16	Green	99.0	1.38
18	Red	98.5	1.7
20	Gold	98.0	1.9



**Figure 1** Examples of the metaphases fully karyotyped using reverse DAPI.

**Notes:** Left karyotype: chromosome 6 centromere labeled in aqua, chromosome 8 centromere labeled in gold, chromosome 10 centromere labeled in red and chromosome Y heterochromatin labeled in green. Right karyotype: chromosome 7 centromere labeled in aqua, chromosome 16 centromere labeled in green, chromosome 18 centromere labeled in red and chromosome 20 centromere labeled in gold.

**Abbreviation:** DAPI, diamidino-2-phenylindole dihydrochloride.

**Table 2** OligoFISH® panel performance results

Performance measure	%	Margin of error 95%
Sensitivity	72	53–86
Specificity	92	74–99
PPV	92	74–99
NPV	72	53–86
Accuracy	81	68–90

**Abbreviations:** PPV, positive predictive value; NPV, negative predictive value.

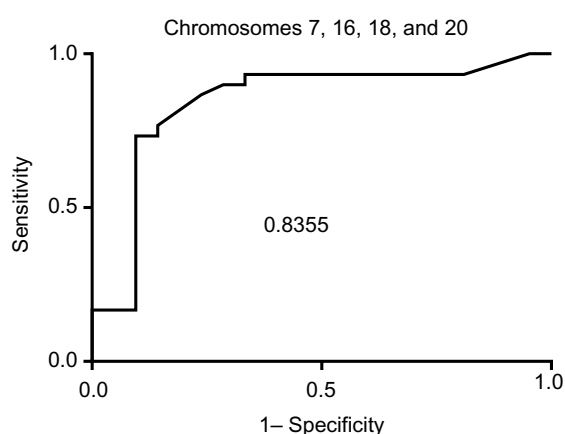
The clinical performance and ROC data are listed in Table 2. ROC curves were calculated by varying the cut-off value from clinical specificity =1 (100%) and sensitivity =0 to specificity =0 and sensitivity =1. The values of true positive rates (clinical sensitivity) were plotted against false-positive rates (1– specificity), and the AUC was calculated using GraphPad Prism 6 software. The highest AUC was obtained when the combination of chromosomes 7, 16, 18, and 20 was used with a value of 0.83, corresponding to a very good test for discriminating between benign and cancerous pathological result (Figure 2 and Table 3).

Best cut-off was determined by plotting sensitivity and specificity at all the possible cut-offs. The best cut-off point was defined as the cut-off where sensitivity and specificity intersect. Clinical sensitivity, clinical specificity, PPV, NPV, and accuracy were calculated as previously described.

The OligoFISH® probe panels showed high specificity (92%), PPV (92%), and accuracy (81%) for the detection of chromosomes 7, 16, 18, and 20, which are associated with prostate cancer.

## Cancer vs benign

Pathological results of the OligoFISH® test are listed in Table 4. The test correlated highly with positive and negative pathological results. Out of 37 positive OligoFISH® tests, 34 (92%) were cancerous by pathology testing. Of the



**Figure 2** ROC and AUC for chromosome panel for chromosomes 7, 16, 18, and 20.

**Abbreviations:** ROC, receiver operator characteristics; AUC, area under the curve.

**Table 3** ROC AUC for each chromosome and chromosome panels

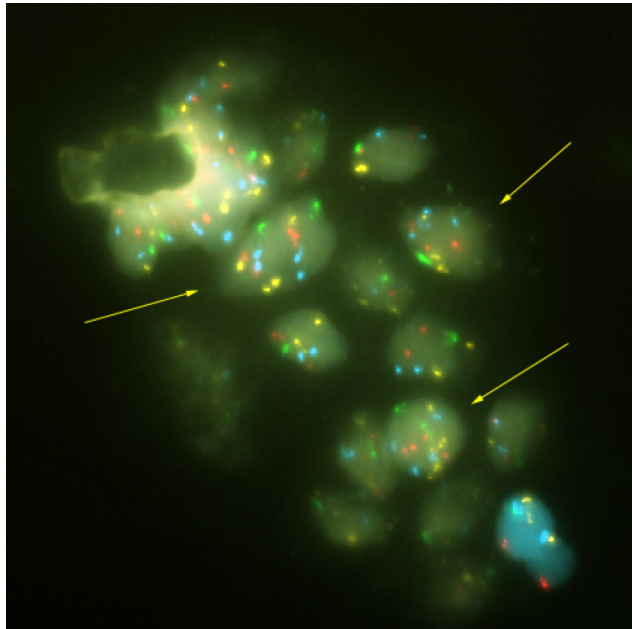
Chromosomes	AUC
6, Y, 10 and 8	0.79
6	0.69
Y	0.70
10	0.75
8	0.73
7, 16, 18, and 20	0.83
7	0.76
16	0.74
18	0.75
20	0.74

**Abbreviations:** ROC, receiver operator characteristics; AUC, area under the curve.

48 negative OligoFISH® tests, 13 (27%) were cancerous by pathology testing. These data demonstrate the high correlation of the test with pathology findings. As shown in Figure 3, the collection of prostate cells in urine following DRE with pressure resulted in markedly increased average percentage of cells with chromosome gains in cancer patients compared

**Table 4** Pathological results of OligoFISH® probes

Results of OligoFISH® test	Pathological results		
	Cancer	Benign	Total
Positive	34	3	37
Negative	13	34	48
Total	47	37	85



**Figure 3** Prostatic cells released in the urine.  
**Note:** Arrows show cells with trisomy and tetrasomy 6 signal in aqua.

to those with benign and low-grade lesions, increasing cellular material for testing and improving test validity through sufficient sample size collection. Figure 3 depicts prostatic cells using the OligoFISH® probe. Arrows show cells with trisomy and tetrasomy 6 signals in aqua.

## Discussion

Despite decades of surveillance, research, and outreach, screening for prostate cancer remains a significant public health priority as well as an ongoing debate. There is agreement among urologists and other health care groups that epidemiologic, clinical, and economic data support the need for more effective, noninvasive, or minimally invasive screening and diagnostic approaches.<sup>8,12</sup> This study demonstrated that OligoFISH® has the appropriate level of reproducible specificity and sensitivity needed for accurate early detection of prostate cancer using minimally invasive procedures. Prostate cell collection in urine collected following DRE with pressure significantly increased the prostate cell harvest that allowed for sufficient cell collection to test the OligoFISH® probe panel. The proportion of prostate cells found in the

urine samples tested varied from 40% to 83% after DRE with pressure. This allowed for the collection of a sufficient number of high-quality prostate cells to perform the test. Urine samples collected without prior DRE with pressure were found to contain almost no prostate cells, demonstrating that DRE with pressure is crucial for performing the test. These probe panels were developed based on chromosomes identified through the use of Mitelman's database for aneuploidy as a biomarker of prostate cancer.<sup>24</sup> This enables the creation of a very powerful probe panel for prostate cancer detection. Specifically, chromosomes 7, 16, 18, and 20 were definitively found to be most correlated with prostate cancer.

Since we looked to score between 300 and 500 cells, 15 patients had to be excluded in this exploratory phase. With an NCO value at 3%, all positive patients became positive in the first 100 cells scored. In the final test, probably 100 cells will be enough and would avoid test failure from low cellularity.

The protocol for the OligoFISH® probes was relatively uncomplicated and streamlined. Most of the OligoFISH® tests were conducted at room temperature, with minimal methodological complexity, in a single day. Tissue samples were voided urine and can be obtained with minimal invasiveness, as DRE with pressure can reliably produce the needed concentration of prostate cells, both cancerous and benign. The probes are designed to provide a rapid test that targets only specific chromosomal regions. This was validated, as the OligoFISH® probes performed with 100% analytical specificity and high sensitivity.

In addition, one of the most important outcomes of this study was high correlation between the OligoFISH® results and pathology findings. This demonstrates that a chromosomal target within malignant cells, isolated from voided urine and not from a prostate biopsy, can detect the presence or absence of malignancy with high sensitivity and specificity. Thus, OligoFISH® probe prostate cancer screening could be done as part of routine DREs with minimal invasiveness, making routine screening more accessible, more accepted by patients and clinicians, and cost-effective. In addition, if OligoFISH® was used periodically to monitor patients with indolent prostate cancer, changes in percentage of abnormal cells could signal progression in the disease.

Table 5 compares available data for currently available tests: tissue biopsy-based epigenetic multiplex polymerase chain reaction (PCR) (ConfirmMDx; MDxHealth, Irvine, CA, USA), and *PCA3* gene assay (Progensa; Hologic, Inc.), with those for the OligoFISH® probe. ConfirmMDx has high NPV, which means it is most reliable if the patient has a negative biopsy. However, despite having an excellent NPV,

**Table 5** Clinical performance comparison of prostate biomarkers

	OligoFISH® Chromosome 7, 16, 18, 20	Tissue Biopsy-Based Epigenetic Multiplex PCR Assay (ConfirmMDx <sup>a</sup> )	PCA3 Gene Assay (Progenas <sup>b</sup> )
<b>Tissue Source</b>	Urine	Prostate Tissue via Biopsy	Urine
Sensitivity %	72	95	42
(CI 95%)	(53–86)	(76–100)	(36–48)
Specificity %	92	38	91
(CI 95%)	(74–99)	(27–51)	(87–94)
PPV %	92	33	80
(CI 95%)	(74–99)	(22–47)	(72–86)
NPV %	72	96	N/A
(CI 95%)	(53–86)	(80–100)	

**Notes:** <sup>a</sup>Data from Trock et al<sup>28</sup>. <sup>b</sup>Data from Wei et al<sup>29</sup>.

**Abbreviations:** CI, confidence interval; PCR, polymerase chain reaction; PPV, positive predictive value; NPV, negative predictive value; FISH, fluorescence in situ hybridization; N/A, not available.

ConfirmMDx's PPV is only 33%, resulting in high false positives. Similar tradeoffs occur with the Progenas test. Although PCA3 shows a high specificity, its sensitivity is 41%, which means it is the NPV that assists physicians in deciding if a new biopsy is required after initial negative biopsy. In contrast, OligoFISH® test possesses both high specificity and high sensitivity, maximizing the test's accuracy.

Most urologists have been trained in prostate massages or DRE with pressure. The use of the OligoFISH® test is extremely easy compared to other FISH tests. The probes hybridize in 10 minutes, allowing results in a record time; most pathologists are trained in scoring FISH results. Most of the pathology laboratories already offer FISH tests, and incorporating a new one should be very easy. Regarding the cost of the test in Michigan, the full procedure of a transrectal ultrasound needle biopsy is being reimbursed by Centers for Medicare and Medicaid Services at \$1,377, while the OligoFISH® procedure is reimbursed at \$700. Since a high number of prostate biopsies result in a benign diagnosis, this test could avoid these procedures, which results not only in an economical benefit but also improved clinical outcomes, since biopsies can result in extra complications, due to the procedure.

One limitation of a FISH test scoring polysomic cells to detect cancer is that aneuploidy is a very general marker for human carcinomas. When obtaining the urine, cells from other organs can be collected as well (including bladder or kidneys). If a patient suspected for prostate cancer has bladder or kidney cancer, this could result in a positive test independent of prostate cancer status.

## Conclusion

The OligoFISH® probes used in this study showed high clinical performance. Larger clinical trials are warranted to demonstrate that the use of this rapid, simple, and minimally invasive OligoFISH® test could significantly improve prostate cancer detection, avoiding unnecessary prostate biopsies.

## Acknowledgment

We would like to thank Marissa Seligman for her editorial work.

## Disclosure

All the authors from Cella are current or past employees. Joan Aurich-Costa is a stock holder of Cella. The authors report no other conflicts of interest in this work.

## References

1. National Cancer Institute: Surveillance, Epidemiology and End Results Program. SEER Stat Fact Sheets-Prostate Cancer. Available from: <http://seer.cancer.gov/statfacts/html/prost.html>. Accessed February 5, 2016.
2. Centers for Disease Control and Prevention. Prostate cancer rates by rate and ethnicity. Available from: <http://www.cdc.gov/cancer/prostate/statistics/race.htm>. Accessed February 5, 2016.
3. American Cancer Society. Lifetime probability of dying from prostate cancer. Available from: <http://www.cancer.org/cancer/cancerbasics/lifetime-probability-of-developing-or-dying-from-cancer>. Accessed February 5, 2016.
4. Pienta KJ, Esper PS. Risk factors for prostate cancer. *Ann Intern Med*. 1993;118(10):793–803.
5. American Cancer Society. What are the risk factors for prostate cancer. Available from: <http://www.cancer.org/cancer/prostatecancer/detailedguide/prostate-cancer-risk-factors>. Accessed February 5, 2016.
6. Taksler GB, Keating NL, Cutler DM. Explaining racial differences in prostate cancer mortality. *Cancer*. 2012;118:4280–4289.
7. Zenka D. African Americans at higher risk for prostate cancer. Available from: [http://www.pcf.org/site/c.leJRIROrEpH/b.8368629/k.D6C1/African\\_Americans\\_At\\_Higher\\_Risk\\_for\\_Prostate\\_Cancer.htm](http://www.pcf.org/site/c.leJRIROrEpH/b.8368629/k.D6C1/African_Americans_At_Higher_Risk_for_Prostate_Cancer.htm). Accessed February 5, 2016.
8. American Urological Association Guidelines on Prostate Cancer: detection of prostate cancer. Available from: <https://www.auanet.org/education/guidelines/prostate-cancer-detection.cfm>; Accessed February 5, 2016.
9. Barry MJ. Clinical practice. Prostate-specific-antigen testing for early diagnosis of prostate cancer. *N Engl J Med*. 2001;344(18):1373–1377.
10. Daneshgari F, Taylor GD, Miller GJ, Crawford ED. Computer simulation of the probability of detecting low volume carcinoma of the prostate with six random systematic core biopsies. *Urology*. 1995;45(4):604–609.
11. Hull GW, Rabbani F, Abbas F, Wheeler TM, Kattan MW, Scardino PT. Cancer control with radical prostatectomy alone in 1,000 consecutive patients. *J Urol*. 2002;167:528–534.
12. US Prevention Services 9,13 Force. Prostate cancer screening. Available from: <http://www.uspreventiveservicestaskforce.org/Page/Document/UpdateSummaryFinal/prostate-cancer-screening>. Accessed February 5, 2016.
13. Ma X, Wang R, Long JB, et al. The cost implications of prostate cancer screening in the Medicare population. *Cancer*. 2014;120(1):96–102.
14. National Cancer Institute. Cancer costs projected to reach at least \$158 billion in 2020. Available from: <http://www.cancer.gov/news-events/press-releases/2011/CostCancer2020>. Accessed February 5, 2016.

15. Prenter JR, Rubin MA, Wei JT, Chinnalyan AM. Beyond PSA: the next generation of prostate cancer biomarkers. *Sci Transl Med*. 2012; 4(127):127rv3.
16. Tosoian J, Loeb S. PSA and beyond: the past, present, and future of investigative biomarkers for prostate cancer. *ScientificWorldJournal*. 2010; 10:1919–1931.
17. van Duin M, van Marion R, Vissers K, et al. High-resolution array comparative genomic hybridization of chromosome arm 8q: evaluation of genetic progression markers for prostate cancer. *Genes Chromosomes Cancer*. 2005;44:438–449.
18. Aurich-Costa J, Zamecheck L et al. Oligo fluorescence in situ hybridization (Oligo-Fish), a new strategy for enumerating chromosomes in interphase nuclei. *Fertil Steril*. 2007;88:S86.
19. Aurich-Costa J, Ng C, Selvaggio S, Colls P, Bradley S. Oligonucleotide (ODN) fluorescence in situ hybridization (Oligo-FISH) and conventional FISH allow enumeration of 24 chromosomes in 6 successive hybridizations performed in a single day. *Fertil Steril*. 2009;92:S50.
20. Zhang S, Zhang HS, Cordon-Cardo C, et al. Selection of tumor antigens as targets for immune attack using immunohistochemistry: II. Blood group-related antigens. *Int J Cancer*. 1997;73:50–56.
21. Sokolova I, Halling KC, Jenkins RB, et al. The development of multitarget, multicolor fluorescence in situ hybridization assay for the detection of urothelial carcinoma in urine. *J Mol Diagn*. 2000;2:116–123.
22. Cui J, Deubler DA, Rohr LR, et al. Chromosome 7 abnormalities in prostate cancer detected by dual-color fluorescence in situ hybridization. *Cancer Genet Cytogenet*. 1998;107:51–60.
23. French M. Chromosomal biomarkers of genomic instability relevant to cancer. *Drug Discov Today*. 2007;7:1128–1137.
24. Mitelman F, Johansson B, Mertens F. Mitelman Database of chromosome aberrations and gene fusions in cancer. In: Mitelman F, Johansson B, Mertens F, editors. Available from: <http://cgap.nci.nih.gov/Chromosomes/Mitelman>, 2011. Accessed May 24, 2016.
25. Reddy KS, Tripod J. Contemplations on preclinical validation of fluorescence in situ hybridization probe assay for paraffin-embedded tissues in hematologic disorders. *Cancer Genet Cytogenet*. 2008;183:1–5
26. Clooper C, Pearson S. The use of confidence or fiducial limits illustrated in the case of the binomial. *Biometrika*. 1934;26:404–413.
27. Reim H, Bale SJ, Bayrak-Toydemir P, et al; Working Group of the American College of Medical Genetics and Genomics Laboratory Quality Assurance Committee. ACMG clinical laboratory standards for next-generation sequencing. *Genet Med*. 2013;15:733–747.
28. Trock BJ, Brozman MJ, Mangold LA, et al. Evaluation of GSTP1 and APC methylation as indicators for repeat biopsy in a high-risk cohort of men with negative initial prostate biopsies. *BJU Int*. 2012;110(1):56–62.
29. Wei, JT, Feng, Z, Partin AW et al. Can Urinary PCA3 Supplement PSA in the Early Detection of Prostate Cancer? *J Clin Oncol*. 2014;32(36):4066–4072.

## Research and Reports in Urology

### Publish your work in this journal

Research and Reports in Urology is an international, peer-reviewed, open access journal publishing original research, reports, editorials, reviews and commentaries on all aspects of adult and pediatric urology in the clinic and laboratory including the following topics: Pathology, pathophysiology of urological disease; Investigation and treatment of

urological disease; Pharmacology of drugs used for the treatment of urological disease. The manuscript management system is completely online and includes a very quick and fair peer-review system, which is all easy to use. Visit <http://www.dovepress.com/testimonials.php> to read real quotes from published authors.

Submit your manuscript here: <https://www.dovepress.com/research-and-reports-in-urology-journal>

Dovepress