

High expression of *S100A8* gene is associated with drug resistance to etoposide and poor prognosis in acute myeloid leukemia through influencing the apoptosis pathway

Xiao-yan Yang,^{1,*} Ming-ying Zhang,^{1,*} Qi Zhou,¹ Shui-yan Wu,¹ Ye Zhao,² Wei-ying Gu,³ Jian Pan,¹ Jian-nong Cen,² Zi-xing Chen,² Wen-ge Guo,⁴ Chien-shing Chen,⁵ Wen-hua Yan,⁶ Shao-yan Hu¹

¹Department of Haematology and Oncology, Children's Hospital of Soochow University, ²Department of Haematology, The First Affiliated Hospital of Soochow University, Suzhou, ³Department of Haematology, The Third Affiliated Hospital of Soochow University, Changzhou, People's Republic of China; ⁴Department of Mathematical Sciences, New Jersey Institute of Technology, Newark, NJ, ⁵Department of Internal Medicine, Division of Hematology and Medical Oncology and Biospecimen Laboratory, Loma Linda University, Loma Linda, CA, USA; ⁶Department of Cardiology, Children's Hospital of Soochow University, Suzhou, People's Republic of China

*These authors contributed equally to this work

Correspondence: Shao-yan Hu
Department of Haematology and Oncology, Children's Hospital of Soochow University, 92 Zhongnan Street, Suzhou Industry Garden, Suzhou 215025, People's Republic of China
Tel +86 512 6778 8409
Fax +86 512 6778 6206
Email hsy139126@163.com

Wen-hua Yan
Department of Cardiology, Children's Hospital of Soochow University, 92 Zhongnan Street, Suzhou Industry Garden, Suzhou 215025, People's Republic of China
Tel +86 512 6778 8203
Fax +86 512 6778 6206
Email whyan328@sina.com

Abstract: *S100A8* has been increasingly recognized as a biomarker in multiple solid tumors and has played pivotal roles in hematological malignancies. *S100A8* is potentially an indicator for poor survival in acute myeloid leukemia (AML) in retrospective studies. However, the mechanisms of *S100A8* are diverse in cancers. In this study, we investigated the correlation of *S100A8* at the transcription level with clinical parameters in 91 de novo AML patients and explored its mechanisms of chemoresistance to etoposide in vitro. The transcription level of *S100A8* was significantly lower at initial and relapse stages of AML samples than at complete remission ($P < 0.001$) and than in the control group ($P = 0.0078$), while no significant difference could be found between initial and relapse stages ($P = 0.257$). Patients with high transcription levels of *S100A8* exhibited a shorter overall survival ($P = 0.0012$). HL-60 cells transfected with *S100A8* showed resistance to etoposide with a higher level IC50 value and lower apoptosis rate compared with HL-60 cells transfected with empty vector. Thirty-six genes were significantly downregulated and 12 genes were significantly upregulated in *S100A8* overexpression group compared with control group in which 360 genes involved in apoptotic genes array were performed by real-time reverse transcriptase polymerase chain reaction. Among them, the caspase-3, Bcl-2, and Bax were verified by Western blot analysis which indicated that the role of *S100A8* in resistance to chemotherapy was closely related with antiapoptosis. In conclusion, critical *S100A8* provided useful clinical information in predicting the outcome of AML. The main mechanism of *S100A8* which promoted chemoresistance was antiapoptosis.

Keywords: *S100A8*, HL-60 cell, drug resistance, acute myeloid leukemia, AML, prognostic factor, antiapoptosis, overall survival

Introduction

Acute myeloid leukemia (AML) is the most common acute leukemia in adults and accounts for ~80% of cases in this group.¹ AML is characterized by a clonal proliferation of myeloid precursors with a reduced capacity to differentiate into more mature cellular elements. As a result, there is an accumulation of leukemic blasts, resulting in variable myelosuppression manifested as pancytopenia.² Clinically, a combination of conventional karyotypic analysis plus reverse transcriptase polymerase chain reaction (RT-PCR) or fluorescent in situ hybridization for specific abnormalities can aid in the diagnosis, treatment, and posttreatment monitoring of patients with AML.³ However, despite continuous improvements and refinement in laboratory tests, ~50% of AML patients have a normal or noninformative

karyotype and are considered to have an intermediate prognosis. Although some improvement during the last four decades has been made with current standard chemotherapy, the prognosis of AML is generally poor with ~35% cured of their disease among younger and fit patients on clinical trials.⁴ Therefore, novel biomarkers potentially have prognostic importance, and therapeutic implications will further our understanding of the biology of such heterogeneous malignancy.

S100A8 is a member of the S100 calcium-binding protein family belongs to the Ca²⁺ binding EF-hand motif superfamily with the ability to form homodimers, heterodimers, and oligomers. S100 proteins have a broad range of intracellular and extracellular functions including regulation of protein phosphorylation and enzyme activity, calcium homeostasis, regulation of cytoskeletal components, and regulation of transcriptional factors.⁵ S100A8 preferentially forms functional heterodimers with S100A9 which have been increasingly recognized as biomarkers in multiple solid tumors, including gastric, esophageal, colon, pancreatic, bladder, ovarian, thyroid, breast, and skin cancers,^{5–8} contributed both by tumor cells and by infiltrating immune cells in the tumor stroma. S100A8 (MRP8) has been described as a critical regulator of chemo-resistance in leukemia. RNA interference-mediated knockdown of S100A8 expression increased the sensitivity of leukemia cells to chemotherapy and apoptosis induction. Moreover, inhibition of S100A8 expression decreased autophagy as evaluated by autophagic markers, while a follow-up study found that S100A8 may enhance drug resistance by upregulating autophagy through promoting the formation of BECN1-PI3KC3 (PI3KC3, phosphatidylinositol 3-kinase class 3) complex.^{9,10}

Recently, gene-expression profiling data reveal *S100A8*, and *S100A8* played pivotal roles in hematological malignancies. Overexpression of *S100A8* and *S100A9* is associated with failure to induce free-cytosolic Ca²⁺ and glucocorticoid resistance in mixed-lineage leukemia-rearranged infant acute lymphoblastic leukemia.¹¹ In a proteomic profiling study, high expression of S100A8 was identified and subsequently confirmed with Western blot analysis in leukemic cells to be highly correlative of poor survival in AML patients.¹² Despite proteomic profiling and clinical correlation of S100A8 in a retrospective study,¹⁰ the role of *S100A8* expression in AML requires confirmatory study. The best method of detecting *S100A8* in clinical specimen remains to be determined. Prospective correlation of *S100A8* expression at either genomic or proteomic level with clinical parameters are yet to be studied.

In this study, we investigated the correlations between *S100A8* with clinical parameters in AML. We analyzed data from mRNA-based measurement to comprehensively study the expression pattern of *S100A8* in a well-characterized cohort of AML patients who underwent intensive chemotherapy. We further investigate the drug resistance mechanisms of *S100A8* on AML cell lines.

Materials and methods

Patient cohort and sample processing

In this retrospective study, 189 AML patient specimens at different treatment stages of induction chemotherapy between 2010 and 2014 were included. Among them, 91 were de novo AML patients (excluded secondary AML, therapy-related AML or AML evolved from antecedent hematological disorders), 64 patients in complete remission (CR) and 34 patients in relapse, in addition to 20 controls without leukemia. Acute promyelocytic leukemia patients were excluded from this study.

Induction chemotherapy for the patients <60 years old was started with mitoxantrone/idarubicin (10 mg/m²) as a 30-minute intravenous infusion at days 1–3, cytarabine (100 mg/m²) per day as continuous intravenous infusion from days 1 to 7.¹³ For older patient (≥60 years old), CAG regimen (low-dose cytosine arabinoside [10 mg/m²/12 h, days 1–14], low-dose aclarubicin [10–14 mg/m²/day, days 1–4], with concurrent G-CSF [200 µg/m²/day]) was given.¹⁴ Patients in all cytogenetic risk groups received at least one course of consolidation therapy with four high-dose cytarabine. Patients in the high-risk group, then were consented and assigned for allogeneic stem cell transplantation at earliest time point after consolidation.

This study was approved by the ethics committee of The First Affiliated Hospital of Soochow University. Each sample of bone marrow mononuclear cells (BMMCs) was collected and frozen after the participant provided written informed consent. BMMCs were isolated by Ficoll density gradient centrifugation. Cytogenetic karyotyping and multiplex RT-PCR for 29 genes¹⁵ were performed for all the patients. Some samples were subjected to DNA sequencing for detection of mutation in *c-kit*, *FLT3-ITD*, *CEBPA*, *NPMA*, and *DNMT3A*. All patients were classified for the cytogenetic risk status according to the current National Comprehensive Cancer Network AML guidelines:¹⁶ the favorable-risk patients were referred to those patients harboring karyotypic abnormalities with inv(16)/t(16;16) or t(8;21); intermediate-risk patients were comprised of those patients with normal cytogenetics, +8, t(9;11) or other nondefined karyotypes; and the

unfavorable-risk patients were those with karyotypes including complex (three clonal chromosomal abnormalities), -5 , $5q-$, -7 , $7q-$, $11q23$ – non $t(9;11)$, $inv(3)$, $t(3;3)$, $t(6;9)$, and $t(9;22)$. The detailed information was illustrated in Table 1.

RT-PCR detection for *S100A8* gene expression

Total RNA was isolated from BMBCs using Trizol reagent (Invitrogen, Carlsbad, CA, USA) according to the

Table 1 Comparison of clinical characteristics of de novo AML patients according to transcription levels of *S100A8*

Characteristic	Overall cohort (n=91)		P-value
	<i>S100A8</i> ^{high} (n=46)	<i>S100A8</i> ^{low} (n=45)	
Sex, male			0.606
Number	27	24	
%	58.6	53.3	
Age, years			0.409
Median	43	33	
Range	18–84	19–71	
LDH, U/L			0.176
Median	307	448	
Range	110–1,732	136–924	
CRP, mg/L			0.823
Median	8.6	7.64	
Range	0.1–17.4	0.6–15.4	
ANC, $\times 10^9/L$			0.512
Median	4.68	2.01	
Range	0.1–58	0.08–88.4	
Monocyte, $\times 10^9/L$			0.73
Median	0.98	0.76	
Range	0.01–30.2	0.08–33.5	
WBC, $\times 10^9/L$			0.834
Median	26.6	5.5	
Range	0.8–209.9	0.7–314.3	
Peripheral blast, %			0.127
Median	29.5	54	
Range	5–97	4–96	
Bone marrow blast, %			0.111
Median	51.8	64.2	
Range	20–96	26–96	
FAB classification			0.043
M0	0	3	
M1	1	6	
M2	24	25	
M4	11	5	
M5	10	5	
M6	0	1	
Fusion gene			0.949
<i>RUNX1/RUNX1T1</i>	15	15	
<i>CBFB/MYH11</i>	3	4	
<i>BCR/ABL1</i>	1	0	
<i>KMT2/MLLT3</i>	1	1	
Other <i>KMT2</i> abnormalities	1	1	
Negative	25	24	

Abbreviations: AML, acute myeloid leukemia; ANC, absolute neutrophil count; CRP, C-reactive protein; FAB, French–American–British; LDH, lactate dehydrogenase; WBC, white blood cell.

manufacturer's protocol. RNA concentrations and purities were measured with a spectrophotometer at A260 and A260/280, respectively. Two micrograms of total RNA were reversely transcribed into cDNA. The primers were designed according to the sequences of *S100A8* mRNAs (GenBank No: NM_002964.4). The sense primer for *S100A8* was 5'-CCGAGTGTCTCAGTATATCAGGA-3' and the anti-sense primer 5'-GCCCATCTTTATCACCAGAATGA-3'. The PCR amplification was carried out in 20 μ L reaction mixture, containing 1 μ L cDNA template, 1 μ L of 20 \times EvaGreen Dye (Biotium, cat: 31000, Hayward, CA, USA), 10 μ L of 2 \times Fast-Plus EvaGreen Mix (Biotium, cat: 31014), 5 μ M forward and reverse primer, respectively, and 7 μ L nuclease-free water. After a 10 minutes denaturation at 95°C, PCR was performed for 40 cycles. Each cycle was completed at 95°C for 15 seconds, 60°C for 1 minute, and followed by a 60°C elongation for 1 minute. β -Actin as a housekeeping gene, was at the same time amplified as control of the same templates. The upstream/downstream primers of β -actin was 5'-CCTGGCACCCAGCACAAAT-3' and 5'-GCCGATCCACACGGAGTACT-3', respectively. In all samples, amplification of β -actin reached the threshold within 30 cycles. Positive and negative controls were included in all assays. *S100A8* transcription level was normalized to β -actin transcription level. $CT(S100A8) = CT(S100A8) - CT(\beta\text{-actin})$. All the primers were Thermo Fisher Scientific products. The expected PCR products of *S100A8* and β -actin were 119 and 70 bp, respectively. Quantitative RT-PCR detection was performed by using Invitrogen (7500 Real-Time PCR System).

Cell and culture conditions

Leukemia cell lines HL-60, NB4, K562, and SHI-1 cell lines were obtained from the American Type Culture Collection (ATCC, Manassas, VA, USA). All cell lines were maintained at 37°C in Roswell Park Memorial Institute 1640 (Invitrogen) supplemented with 10% fetal bovine serum (Invitrogen).

Transfection of HL-60 cells with engineered *S100A8* gene cDNA

Based on our previous study,¹⁷ we amplified *S100A8* gene from CD34 positive cells and sequenced for validation and cloned into the lentivirus vector, pLVX-IRES-puro (Clontech Laboratories, Inc, Mountain View, CA, USA). pLVX-S100A8-puro and pLVX-puro were transfected into HL-60 cells using lipofectamine 2000 transfection reagent (Invitrogen), according to manufacturer's

instructions and validated by real-time RT-PCR and Western blot.

Cell viability assay

Cells ($1 \times 10^4/100$ mL) were seeded in 96-well plates and treated on the following day (24, 48, or 72 hours) with VP-16 (etoposide), Ara-c (cytarabine), DNR (daunorubicin), and HHT (homoharringtonine/omacetaxine mepesuccinate). Cell viability was analyzed using CCK8 kit (Cat: GD721; DOJINDO Laboratories, Rockville, MD, USA) according to the manufacturer's instructions, and optical density (OD) was read at 490 nm on a microplate reader (Bio-Rad Laboratories Inc., Hercules, CA, USA). The cell viability (%) was calculated as the following equation: cell viability = $OD_A/OD_B (\%) \times 100\%$ (OD_A , experimental group; OD_B , control group).

Cell cycle analysis

For cell cycle analysis, cells were harvested and washed in ice-cold phosphate-buffered saline, and then fixed in 70% cold ethanol. The cell pellets were suspended in a 1 mL solution containing 100 mg/mL Rnase (Sigma-Aldrich Co., St Louis, MO, USA) and 50 mg/mL propidium iodide (Sigma-Aldrich Co.), and incubated for 30 minutes at 37°C. Cell cycle analysis was performed on a flow cytometer (Beckman Coulter FC 500, Pasadena, CA, USA) and analyzed by Multicycle AV program (Beckman Coulter).

Apoptosis assay

Apoptosis assay was according to the manual operation of DOJINDO Annexin V Staining Kit (Cat:GD721; DOJINDO Laboratories). Briefly, cells were washed two times with cold phosphate-buffered saline and then cells were resuspended in $1 \times$ binding buffer at a concentration of $\sim 1 \times 10^6$ cells/mL. Then 100 μ L of the solution ($\sim 1 \times 10^5$ cells) was transferred to a 5 mL culture tube. Annexin V and propidium iodide (5 μ L/test) were added. Cells were gently mixed and incubated for 15 minutes at room temperature in the dark. Four hundred microliters of $1 \times$ binding buffer was added to each tube and the cells were analyzed by flow cytometry within 1 hour.

Real-time PCR array analysis for apoptosis

Samples from each group were submerged in 1 mL Trizol (Invitrogen) for RNA extraction, and stored at -80°C until further processed. cDNA synthesis was performed on 4 μ g of RNA in a 10 μ L sample volume using SuperScript II reverse transcriptase (Invitrogen) as recommended by the

manufacturer. Real-time PCR array (SABioscience Human Apoptosis PCR Array PAHS-3012, Frederick, MD, USA) analysis was performed in a total volume of 20 μ L including 2 μ L of cDNA, primers (0.2 mM each), and 10 μ L of SYBR Green mix (Hoffman-La Roche Ltd., Basel, Switzerland). For gene expression quantification a comparative Ct method was used. Gene expression levels for each sample were normalized to the expression level of the housekeeping gene encoding glyceraldehyde 3-phosphate dehydrogenase within a given sample ($-\Delta\text{Ct}$); the relative expression of each gene was calculated with $10^{6 \times \text{Log } 2(-\Delta\text{Ct})}$. Statistical significance of gene expression was calculated with the *t*-test using SPSS 17.0 version software (SPSS Inc., Chicago, IL, USA).

The patients with transcription values greater than or equal to the median of all samples was defined as $S100A8^{\text{high}}$, and the patients with transcription values less than the median of all samples (median of $S100A8=0.4009$) was defined as: $S100A8^{\text{low}}$.

Western blot analysis

Whole cell extracts were obtained according to the standard protocol using radioimmunoprecipitation assay buffer, followed by sonication for 5 minutes. Protein concentrations were measured using the Pierce BCA Protein Assay Kit (Invitrogen). Equal amounts of protein extracts (20 μ g) were subjected to 10% or 12% sodium dodecylsulfate-polyacrylamide gel electrophoresis and blotted onto polyvinylidene fluoride membranes (Millipore, Belford, MA, USA), and then blocked for 1 hour in 5% nonfat powdered milk in Tris-buffered saline and Tween 20, the membrane was incubated with primary antibodies for $S100A8$, caspase-3, Bax, Bcl-2, and GAPDH. Blots were then incubated with a horseradish peroxidase-conjugated antimouse or antirabbit antibody. Signals were detected using ECL reagents (Invitrogen).

Statistical analyses

To compare $S100A8$ transcription levels in AML patients at different stages and in the control group, Mann-Whitney *U*-test (= Wilcoxon rank sum test) was used. To delineate distinct patient subgroups on the basis of $S100A8$ transcription level, patients with transcription values greater than or equal to the median of all samples were classified as having high level of $S100A8$ (median of $S100A8=0.4009$). These cut points were chosen after inspection of survival curves within quantiles of the gene transcription levels. Fisher's exact test and the Mann-Whitney *U*-test were used appropriately to analyze the clinical characteristics of de novo AML patients included in this study. A *P*-value <0.05 was accepted as statistically significant.

Survival curves were generated by the Kaplan–Meier method, and *P*-values were calculated by the log-rank test. Multivariate Cox proportional hazard regression models were constructed for overall survival (OS). Confidence intervals (CI) throughout refer to 95% boundaries. All the above analyses were performed by using the statistic software SPSS 17.0 version (SPSS Inc.) and GraphPad Prism software version 5 (GraphPad Software, La Jolla, CA, USA).

Statistical comparisons of mean values in cell line study were performed using Student's *t*-test. When *P*-values were <0.05 the effect size was calculated by using the software G*Power 3 (Faul F, Erdfelder E, Lang AG, Buchner A, Düsseldorf, Germany).¹⁸

Results

Correlation of *S100A8* transcription level with clinical characteristics and treatment outcomes in de novo AML patients

We investigated the transcription levels of *S100A8* in primary BMMCs obtained from 189 patients with AML (91 pretreated patients, 64 patients in CR, and 34 patients in relapse phase). The expression levels of *S100A8* in AML patients had no significant difference between initial pretreated and relapse stages ($P=0.257$), but significant lower at initial, as compared to CR stages ($P<0.001$) and control group ($P=0.0078$) (Figure 1A). We further analyzed correlation of *S100A8* expressions levels and clinical

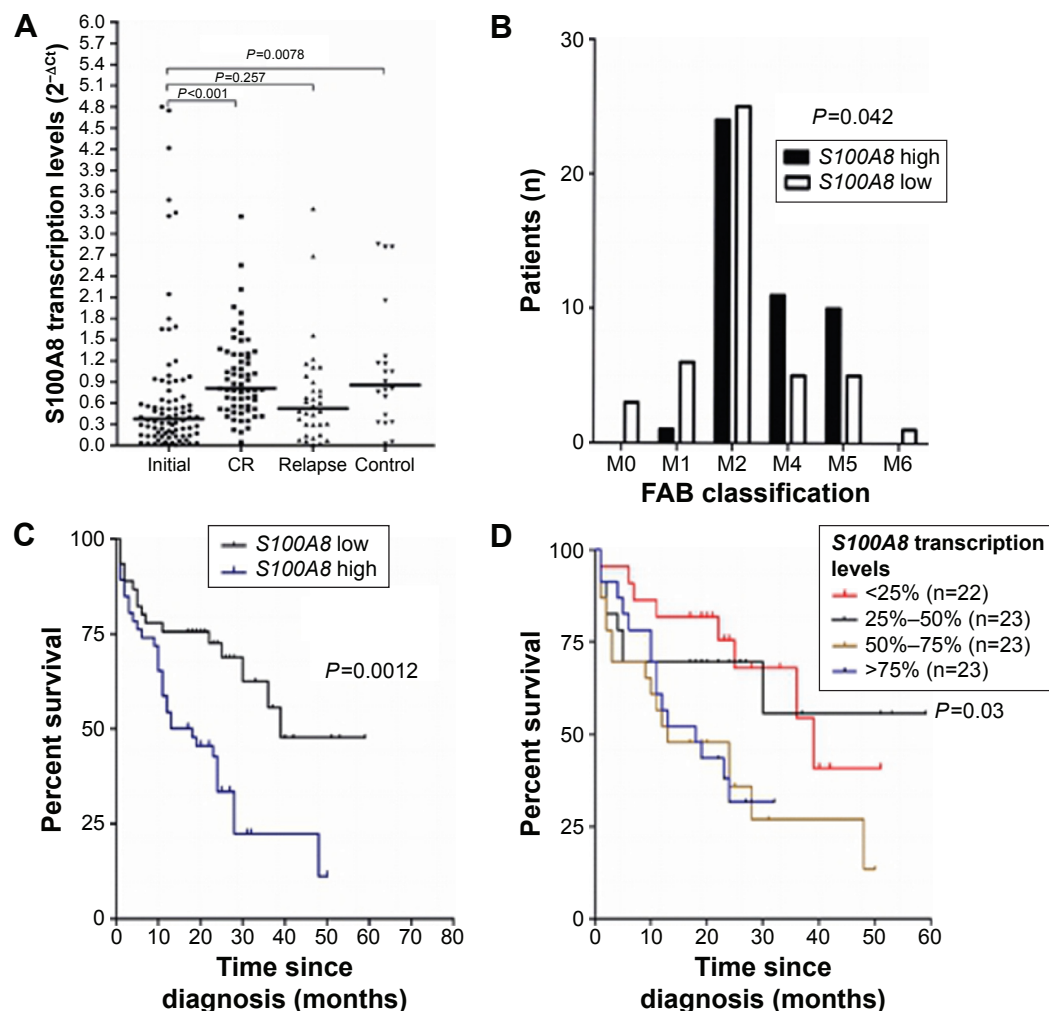


Figure 1 Correlation of *S100A8* transcription level with outcomes in de novo AML patients.

Notes: (A) Transcription levels of *S100A8* in AML patients at different stages and in control group. *S100A8* transcription in de novo and relapse AML patients revealed no significant difference ($P=0.257$), but was lower than that in complete remission ($P<0.001$) and control group ($P=0.0078$). The thick solid lines represent medians for *S100A8* of each group. (B) The transcription levels of *S100A8* were significantly associated with cytomorphological classification. The results showed that *S100A8* transcription levels were higher in FAB classifications M4 and M5 than in the M0 and M1 subtypes. (C) Overall survival for patients with de novo AML according to the low and high expression of *S100A8*. The results showed that high *S100A8* transcription predicted shorter OS in the whole cohort of patients ($n=91$). (D) OS according to percentiles of *S100A8* transcription levels in de novo AML patients. To test whether a cut point at the median was appropriate to define high- and low-risk patient subgroups on the basis of *S100A8* transcription levels, survival curves were generated for patient cohorts with *S100A8* transcription levels <25th percentiles, between 25th and 50th percentiles, 50th and 75th percentiles, and >75th percentile. Median of *S100A8* transcription was 0.4009. The results showed that the higher the expression of *S100A8*, the shorter the OS in de novo AML patients ($P=0.03$).

Abbreviations: AML, acute myeloid leukemia; FAB, French–American–British; OS, overall survival.

characteristics among 91 newly diagnosed AML, as shown in Table 1. The median age of patients was 40 years, range from 18 to 84 years. The differential expression of *S100A8* in various stages of AML provides us the opportunity of evaluating expression of *S100A8* at the transcription level through treatment course. The transcription level of *S100A8* was closely related to FAB classification. *S100A8* transcription levels were higher in FAB M4 and M5 than that in M0 and M1 subtypes ($P=0.042$) (Figure 1B). Patients with high and low *S100A8* transcription levels had median OS times of 15 (CI: 12.8, 20) and 23 (CI: 18.5, 23.5) months, respectively ($P=0.024$). The estimated 3-year OS rates of high expression *S100A8* group was 32% (CI: 16%, 52%) versus 59% (CI: 41%, 76%) for the low expression group ($P=0.042$) (Table 2). Survival analysis indicated that high *S100A8* transcription predicted a shorter OS in the whole cohort of patients ($P=0.001$) (Figure 1C). To further divide the patients into four groups based on their transcription level of *S100A8*: 23 cases with *S100A8* expression level <25%, 23 cases between 25% and 50%, 23 cases between 50% and 75%, and 23 cases >75%. As shown in Figure 1D, the patients with *S100A8* level >75% had a statistical significant shorter OS than all other groups ($P=0.03$).

Prognostic value of *S100A8* transcription level in de novo AML patients in the context of other risk factors

Multivariate analyses were performed to identify the prognostic value of expression of *S100A8*, in addition to the well-established clinical prognostic parameters, including age, white blood cell count, bone marrow blast, cytogenetic classification, and fusion genes. Based on

Table 2 Clinical outcomes in subgroup analysis defined according to transcription levels of *S100A8*

Outcomes	<i>S100A8</i> transcription		P-value
	High (n=26)	Low (n=27)	
CR, n	14	19	0.264
Rate, %	53.8	70.3	
Relapse, n	8	4	0.196
Rate, %	33.3	16	
OS	High (n=46)	Low (n=45)	0.024
Median, months	15	23	
95% CI, months	12.8–20.0	18.5–23.5	
3-year OS rate, %	32	59	
95% CI, %	16–52	47–76	

Abbreviations: CI, confidence interval; CR, complete remission; OS, overall survival.

Table 3 Multivariate Cox proportional hazard analysis of overall survival in the cohort of de novo AML patients

Factors	Multivariate analysis		
	HR	95% CI	P-value
<i>S100A8</i> transcription, high (n=46) versus low (n=45)	2.980	1.145–6.148	0.003
Age, years <60 (n=77) versus ≥60 (n=14)	2.619	1.131–6.065	0.025
BM blast, %	1.017	1.003–1.031	0.016
Cytogenetic characteristics, favorable (n=17), intermediate (n=59), and unfavorable (n=11)	0.421	0.160–1.104	0.039

Abbreviations: AML, acute myeloid leukemia; BM, bone marrow; CI, confidence interval; HR, hazard ratio.

multivariate model for OS, high *S100A8* transcription was a significant prognostic factor ($P=0.003$) after adjustment for age ($P=0.025$), bone marrow blast percentage ($P=0.016$), and cytogenetic classification ($P=0.039$) at diagnosis (Table 3). In the total cohort of de novo AML patients, the age over 60 years ($P<0.001$) and cytogenetic classification ($P=0.016$) were independently prognostic factors for OS (Figure S1A and B).

Because patients <60 years represent the majority of the patient cohort (n=77), we divided this group of patients into two subgroups based on high versus low expression of *S100A8*. The survival rate of patients <60 years with high transcription *S100A8* was better than patients group ≥60 years, but was poorer than the survival of patients <60 years with *S100A8* low transcription (Figure 2A). Therefore, *S100A8* transcription represents a prognostic factor and allows refined risk stratification in de novo AML patients. Next, *S100A8* transcription level was analyzed against cytogenetic risk stratifications. To further explore the relationship between *S100A8* transcription levels and cytogenetic risk classification, the patients were divided into six subgroups (Figure 2B). Then, survival analysis was performed based on the new stratification, giving a result that the new stratification was highly correlated with the OS ($P<0.0001$). With significantly different OS, patients from the intermediate-risk group were divided into two subgroups (IH, cytogenetically intermediate-risk with *S100A8* high transcription and IL, cytogenetically intermediate-risk with *S100A8* low transcription). Patients from group IL demonstrated a probability of OS similar to the cytogenetically favorable-risk group, whereas the survival curve of IH subgroup was close to the unfavorable-risk group (Figure 2C). All together, the transcription level of *S100A8* further stratified the risk among cytogenetic subgroups.

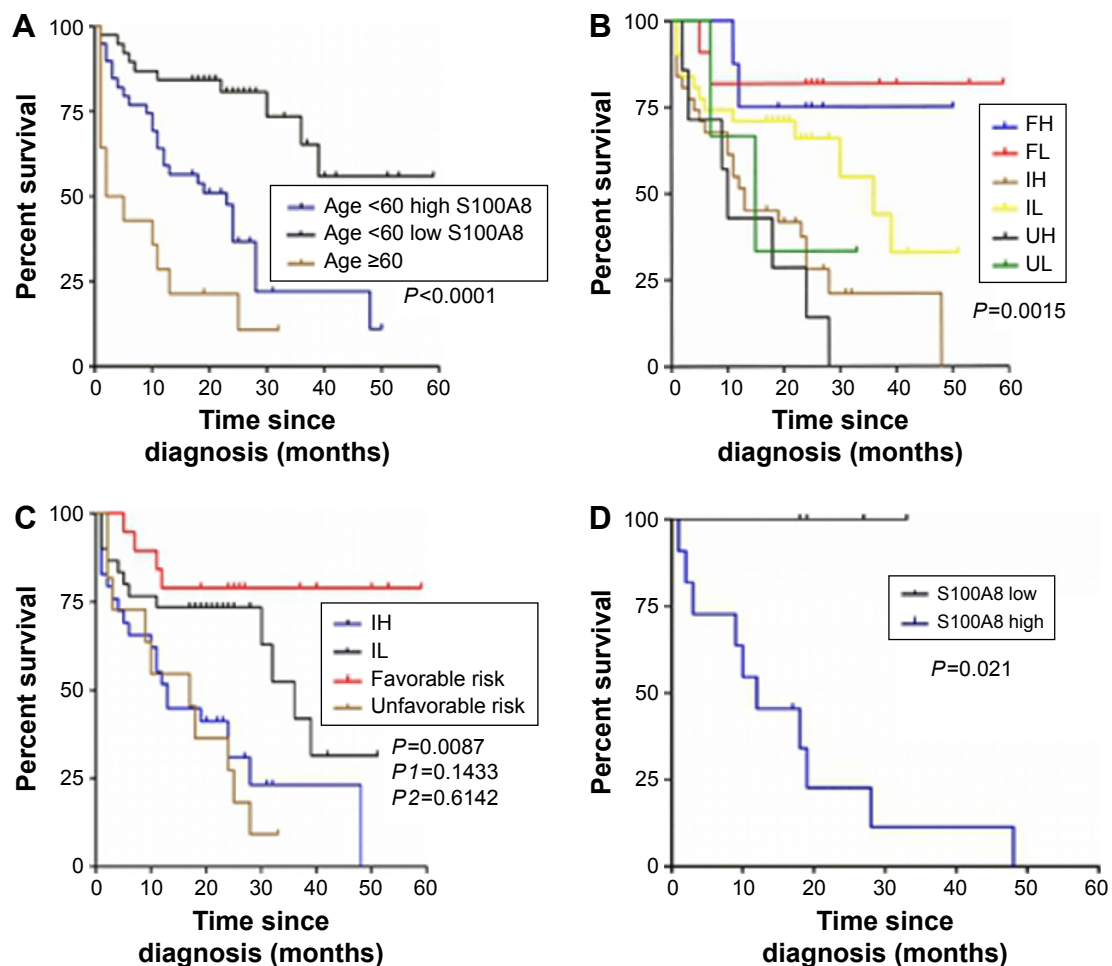


Figure 2 Prognostic value of *S100A8* transcription level in de novo AML patients in the context of other risk factors.

Notes: (A) Risk stratification of de novo AML patients by a combination of age with *S100A8* transcription levels. Patients <60 years old were divided into two subgroups after combination with *S100A8* transcription level, which showed the survival of patients <60 years old with *S100A8* high transcription was superior to the patients >60 years old, but was poorer than the survival of patients <60 years old with *S100A8* low transcription. (B) The whole group of patients was split into six subgroups by a combination of cytogenetic characteristics with *S100A8* transcription levels (FH, FL, IH, IL, UH, and UL). The results showed that UH had a shorter OS than other groups ($P=0.0015$). (C) Patients from IL and IH subgroups had significantly different OS ($P=0.0087$). Patients from group IL showed a probability of OS similar to the cytogenetically favorable-risk group ($P=0.1433$), whereas the survival curve of IH subgroup was close to the unfavorable-risk group ($P=0.6142$). (D) OS in de novo AML patients without any of the five gene mutations ($n=15$). The results showed that high *S100A8* transcription predicted shorter OS ($P=0.021$).

Abbreviations: AML, acute myeloid leukemia; FH, cytogenetically favorable-risk with *S100A8* high transcription; FL, cytogenetically favorable-risk with *S100A8* low transcription; IH, cytogenetically intermediate-risk with *S100A8* high transcription; IL, cytogenetically intermediate-risk with *S100A8* low transcription; OS, overall survival; UH, cytogenetically unfavorable-risk with *S100A8* high transcription; UL, cytogenetically unfavorable-risk with *S100A8* low transcription.

Among these participants, only 24 patients were detected with gene mutations including *FLT3-ITD*, *FLT3-TKD*, *NPM1*, *c-kit*, and *CEBPA*. Among them, four had *FLT3-ITD*, four had *NPM1* mutation, and two had *c-kit* mutations. These results were not included in the multivariate model due to the small group size. However, survival analysis for OS was performed in the small cohort of patients ($n=15$) with none of the five gene mutations, indicating that high *S100A8* transcription predicted shorter OS ($P=0.021$) (Figure 2D). Therefore, *S100A8* transcription level could be a prognostic factor for de novo AML patients without the above gene modifications albeit the small sample size.

Overexpression of *S100A8* showed resistance to etoposide in HL-60 cells

S100A8 was differentially expressed in leukemia cell lines HL-60, NB4, K562, and SHI-1, with relatively low level of *S100A8* in HL-60 cells (Figure 3A). Figure 3B indicated that HL60 cells were successfully transfected with pLVX-*S100A8* and pLVX-control, respectively. The overexpression of *S100A8* in HL-60 cells attenuated chemotherapy sensitivity to etoposide treatment over 72 hours compared with the control group (Figure 3C). However, pLVX-*S100A8* transfected cells did not show significant difference compared with control cells when exposure to

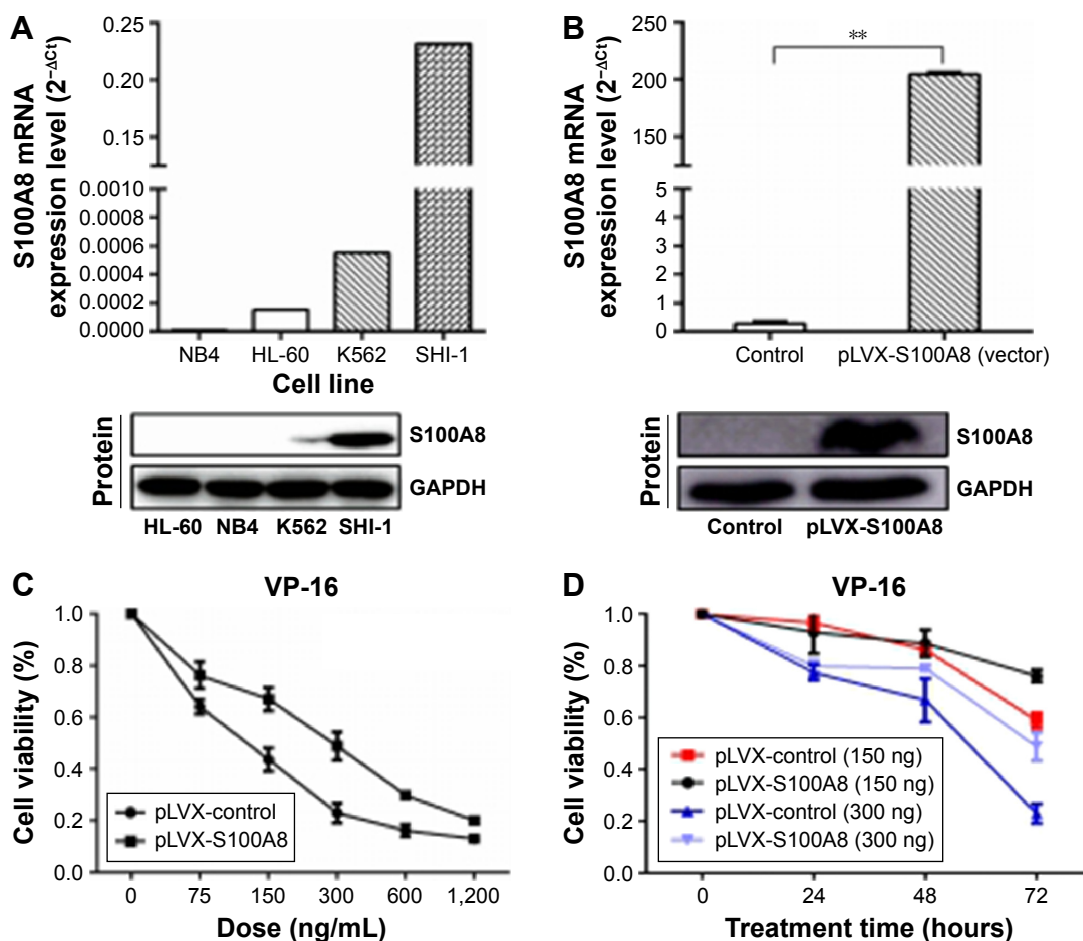


Figure 3 Overexpression of *S100A8* showed drug resistance to etoposide in HL-60 cells.

Notes: (A) mRNA and protein expression of *S100A8* was assayed in four leukemia cell lines. The results showed that *S100A8* expression was low in HL-60, NB4, and K562, while high in SHI-1. (B) HL60 cells were transfected with the lentivirus vector of pLVX-control or pLVX-S100A8. Protein and mRNA level of *S100A8* was assayed by Western blot and real-time reverse transcriptase polymerase chain reaction, respectively (** $P < 0.05$). (C) Transfectants of pLVX-control and pLVX-S100A8 treated with VP-16 (etoposide) for 72 hours. Cell viability was analyzed by CCK8. The results showed that overexpression of *S100A8* mediated HL-60 cells resistance to VPI6 compared with control group. (D) Overexpression of *S100A8* mediated HL-60 cells resistance to VPI6 in a time- and dose-dependent way. Cell viability analyzed by CCK8 indicated that HL60 cells transfected with *S100A8* treated with VP-16 at 150 and 300 ng/mL for 24, 48, and 72 hours, respectively, showed a higher viability than HL-60 cells transfected with empty vector.

Ara-c, DNR, and HHT (data not shown). Further experiments showed that this chemoresistance to etoposide was in a time- and dose-dependent manner (Figure 3D), CCK-8 experiments demonstrated that HL-60 cells transfected with *S100A8* treated with VP-16 for different hours (24, 48, and 72 hours) and different dose (150 and 300 ng/mL), showed a higher viability than HL-60 cells transfected with empty vector.

S100A8 affects the expression of antiapoptotic or proapoptotic proteins during chemotherapy in leukemia cells

To further explore the mechanism of *S100A8* drug resistance in leukemia cells, we treated the *S100A8* overexpressed cells and the control cells with 300 ng/mL etoposide for 72 hours and detected cell apoptosis by flow cytometry. We found

that overexpression of *S100A8* in HL-60 cells promoted resistance to apoptosis compared with the control group (Figure 4). These data demonstrated apoptosis pathway mediated *S100A8* resistance to etoposide.

Using real-time apoptosis PCR arrays, we analyzed and clustered the expression of 370 genes associated with apoptosis pathway in control and *S100A8* overexpression cells treated by etoposide at 300 ng/mL for 12 hours (Figure 5A). The genes most significantly upregulated or downregulated are shown in Figure 5B and C, respectively. Examination of the array data revealed that 36 genes were significantly downregulated and 12 genes were significantly upregulated in *S100A8* overexpression group compared with control group (Tables 4 and 5, respectively). The expression patterns of caspase-3, Bcl-2, and Bax were validated by Western blot analysis (Figure 5D).

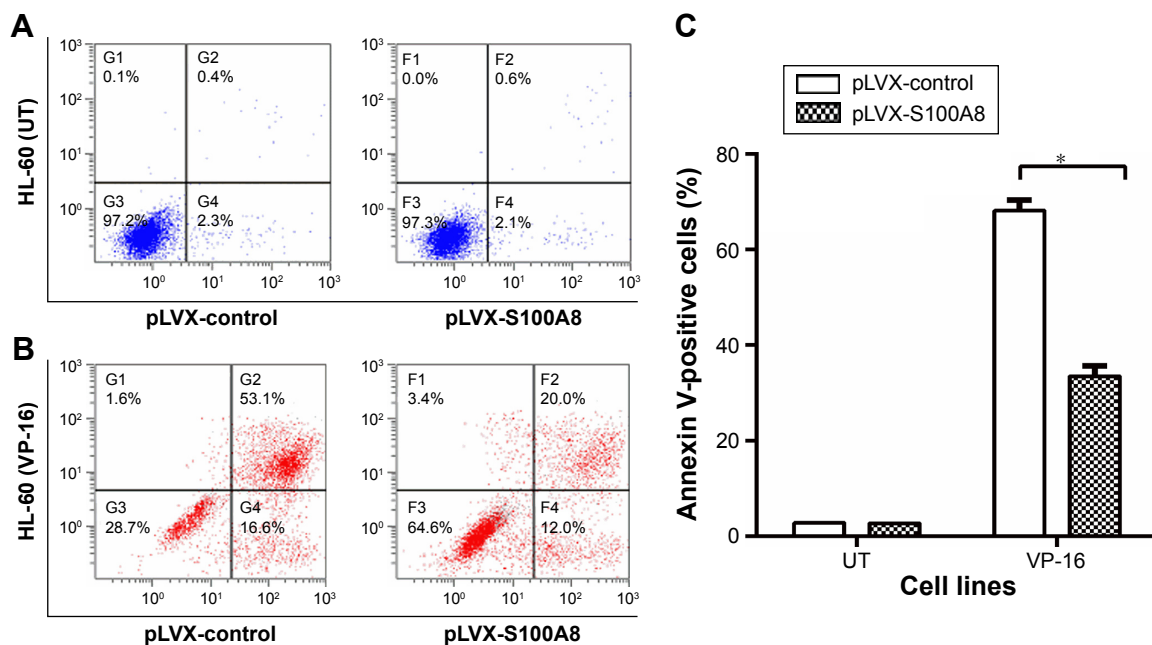


Figure 4 HL60 cells transfected with either pLVX-control or pLVX-S100A8 treated with VP-16 (etoposide; 300 ng/mL) for 72 h.

Notes: The apoptotic rate analyzed by flow cytometry for HL-60 cells transfected with pLVX-control and pLVX-S100A8 without any treatment (A) and treated by etoposide (B); and column analysis of apoptotic rate detected by flow cytometry for both cell lines either treated or untreated (C). The results showed that HL-60 cells overexpressed with S100A8 had less apoptosis rate (* $P=0.004$).

Abbreviations: UT, untreated; h, hours.

Discussion

In this study, for the first time to our best knowledge, we demonstrated that the transcription levels of *S100A8* in AML patients at different stages were diverse, that is, its transcription levels decreased in de novo and relapse stages when compared with patients in CR and control group. Our results showed that *S100A8* is a predictor of poor survival in de novo AML patients. Overexpression of *S100A8* enhances the drug resistance of AML cells to etoposide by downregulating the expression of Bax and caspase-3, suggesting chemoresistance induced by over expression of *S100A8* involved in antiapoptosis pathway.

S100A8 is constitutively expressed by myeloid cells, including granulocytes, monocytes, and early differentiated cells of the myeloid lineage.^{19,20} The differential expression of *S100A8* in various stages of AML provides us the opportunity of evaluating expression of *S100A8* at the transcription level through treatment course. Furthermore, in de novo AML patients, *S100A8* transcription levels were higher in FAB M4 and M5 than in the M0 and M1 subtypes (Figure 1B).

S100A8 belongs to a family of 25 homologous low-molecular-weight intracellular calcium-binding proteins that exhibit tissue and cell-specific expression.²¹ Twenty-one of the human S100 genes are clustered on chromosome 1q21, a frequent target region for chromosome rearrangements that occur during tumor development, indicating their possible

involvement in malignancy.²² *S100A8* gene expresses differentially in a wide variety of cell types, abundantly in myeloid cells. It has been reported to regulate cell proliferation and metastatic processes,²³ to induce apoptosis,²⁴ and to be involved in the progression of various cancers.²⁵ In this context, we detected the mRNA expression level of *S100A8* in bone marrow cells from AML patients at different stages to explore the influence of transcription level of *S100A8* on the clinical characteristics, development, and prognosis of AML patients. Meanwhile, we explored its potential function in vitro. In this cohort of 91 de novo AML patients, we found that *S100A8* transcription level correlated with OS in univariate analysis. Moreover, multivariate model showed *S100A8* expression at transcriptional level was a strong prognostic factor for de novo AML patients.

Recently, Nicolas et al¹² used mass spectrometry-based proteomic approaches to characterize de novo AML, revealing the expression of *S100A8* in leukemic cells is a predictor of poor survival. Because of mRNA alternative splicing, allelic variations, and posttranslational modifications, the genome can produce well over a million protein species, but our qRT-PCR study and the previous proteomic analysis reached the same goal by different means. *S100A8* transcription status could provide two subgroups of different treatment outcomes, refining risk stratification of de novo AML. Our data showed that *S100A8* has been associated

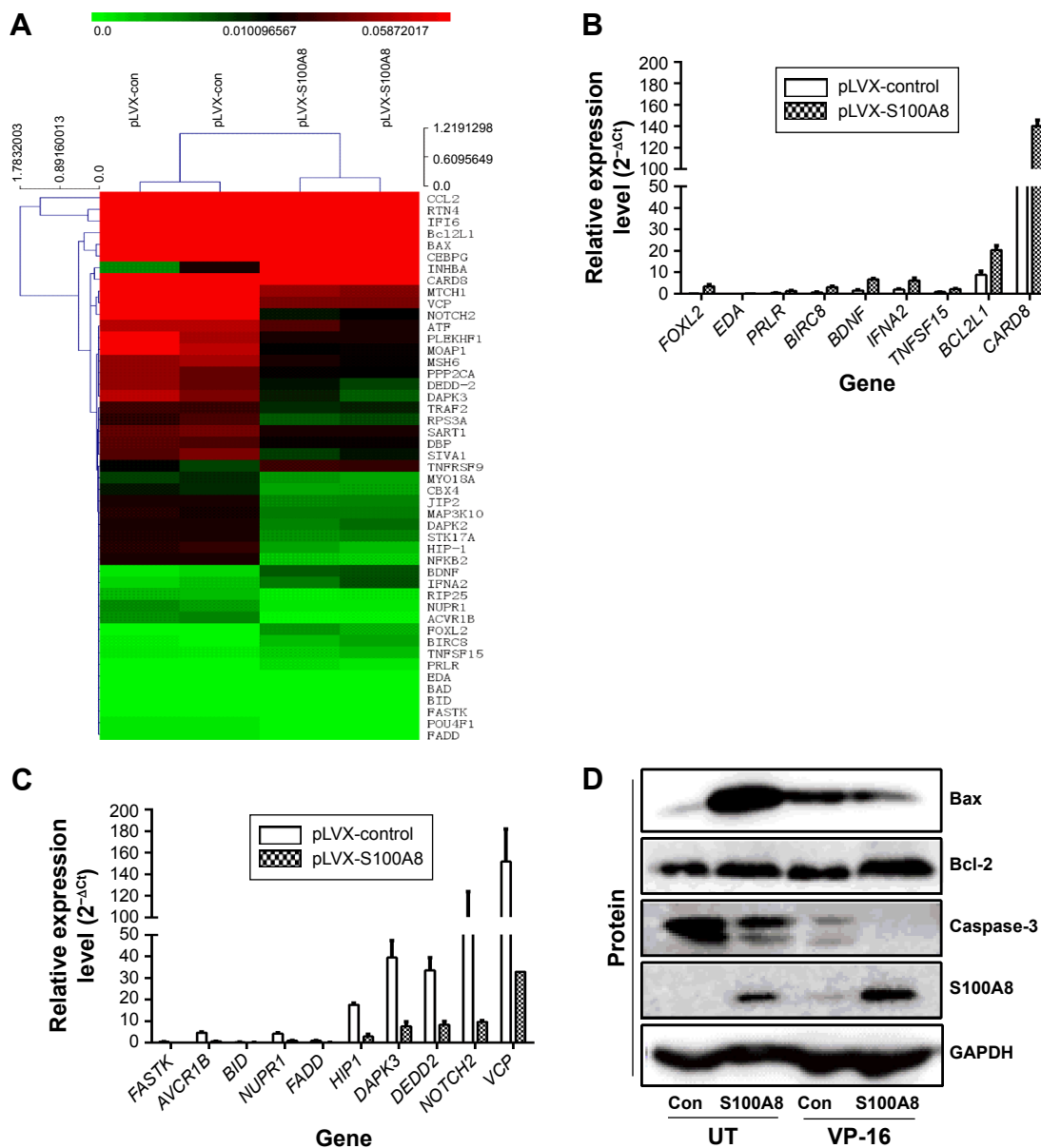


Figure 5 Real-time polymerase chain reaction array identifies genes implicated after etoposide treatment. **Notes:** (A) Gene expression clustering of 370 key apoptosis genes in pLVX-S100A8 and pLVX-control group. (B) Relative expression of the most upregulated genes in pLVX-S100A8 transfected cells compared with pLVX-control transfected cells. (C) Relative expression of the most downregulated genes in pLVX-S100A8 transfected cells compared to pLVX-control transfected cells. (D) Western blot validation. Bax and caspase-3 were more downregulated in pLVX-S100A8 transfected cells compared with control cells. There was no significant difference of Bcl-2 in both transfected cells. Protein lysates from treated cells were tested for expression levels by Western blot analysis. **Abbreviations:** Con, control; UT, untreated.

Table 4 Genes upregulated in pLVX-S100A8 cells compared with the control group treated with etoposide

Gene	Description	pLVX-Con	pLVX-S100A8	Fold change	P-value
FOX L2	Forkhead box L2	16	348.0006	21.75	0.0264
EDA	Ectodysplasin A	0.452	9.58	21.1946	0.0022
INHBA	Inhibin, beta A	920.25	8,505.752	9.2428	0.0114
BIRC8	Baculoviral inhibitor of apoptosis protein repeat containing 8	62.2	305.3966	4.9099	0.0253
BDNF	Brain-derived neurotrophic factor	144.7138	662.4139	4.5774	0.0067
PRLR	Prolactin receptor	30.15	127.3105	4.2225	0.0202
IFNA2	Interferon, alpha 2	194.8773	616.7146	3.1646	0.04
TNFSF15	Tumor necrosis factor (ligand) superfamily, member 15	83.8763	216.1588	2.5771	0.0228
CCL2	Chemokine (C-C motif) ligand 2	45,485.0067	116,621.1226	2.5639	0.0428
TNFRSF9	Tumor necrosis factor receptor superfamily, member 9	876.0508	2,038.7344	2.3271	0.027
Bcl2L1	BCL2-like 1	10,838.1428	23,406.8062	2.1596	0.0043
CARD8	Caspase recruitment domain-containing protein 8	6,993.7834	14,019.963	2.0046	0.006

Abbreviation: Con, control.

Table 5 Genes downregulated in pLVX-S100A8 cells compared with the control group treated with etoposide

Gene	Description	pLVX-Con	pLVX-S100A8	Fold change	P-value
<i>FASTK</i>	Fas-activated serine/threonine kinase	50.0567	0.12501	0.0025	0.008
<i>BAD</i>	BCL2-associated agonist of cell death	15.4544	0.2891	0.0187	0.0005
<i>NOTCH2</i>	Notch homolog 2 (<i>Drosophila</i>)	8,505.752	98.6983	0.0116	0.0483
<i>FADD</i>	Fas (TNFRSF6)-associated via death domain	107.7	7.08	0.0657	0.0026
<i>NFKB2</i>	Nuclear factor of kappa light polypeptide gene enhancer in B-cells 2	1,453.2478	201.5781	0.1387	0.0008
<i>ACVR1B</i>	Activin A receptor, type IB	468.3158	64.8082	0.1383	0.0033
<i>HIP-1</i>	Huntingtin interacting protein 1	1,764.8651	292.9152	0.1659	0.0035
<i>XIAP</i>	X-linked inhibitor of apoptosis	490.1434	86.9184	0.1773	0.0425
<i>DAPK3</i>	Death-associated protein kinase 3	3,954.1626	765.2353	0.1935	0.0311
<i>MOAP1</i>	Modulator of apoptosis 1	5,271.7106	1,121.7917	0.2128	0.0205
<i>VCP</i>	Valosin containing protein	15,172.3452	3,291.7532	0.2169	0.031
<i>CEBPG</i>	CCAAT/enhancer binding protein (C/EBP), gamma	29,516.19	6,589.2005	0.2232	0.0105
<i>NUPR1</i>	Nuclear protein	421.693	98.6983	0.2341	0.0125
<i>DEDD-2</i>	Death effector domain	3,352.0791	840.9292	0.2509	0.028
<i>MTCH1</i>	Mitochondrial carrier homolog 1 (<i>Caenorhabditis elegans</i>)	14,581.5596	3,681.0147	0.2524	0.0058
<i>BID</i>	BH3 interacting domain death agonist	33.439	9.16378	0.2740	0.0404
<i>STK17A</i>	Serine/threonine kinase 17a	1,613.1765	478.6297	0.2967	0.0037
<i>SIVA1</i>	SIVA1, apoptosis-inducing factor	2,999.6988	858.6627	0.2862	0.0416
<i>PLEKHF1</i>	Pleckstrin homology domain containing, family F (with FYVE domain) member 1	5,070.4465	1,489.3733	0.2937	0.0478
<i>MSH6</i>	MutS homolog 6 (<i>Escherichia coli</i>)	3,932.7916	1,296.3399	0.3296	0.0086
<i>DAPK2</i>	Death-associated protein kinase 2	1,542.8025	533.0413	0.3455	0.0068
<i>MAP3K10</i>	Mitogen-activated protein 3-kinase 10	1,498.3475	529.9268	0.3537	0.0445
<i>PPP2CA</i>	Protein phosphatase 2 (formerly 2A), catalytic subunit, alpha isoform	3,369.9107	1,060.923	0.3148	0.0254
<i>RPS3A</i>	Ribosomal protein S3A pseudogene 5	2,069.2191	692.4215	0.3346	0.0444
<i>MAPK8IP2</i>	JNK-interacting protein 2	1,425.392	481.2653	0.3376	0.0082
<i>CASP8AP2</i>	Caspase 8 associated protein 2	284.0061	106.591	0.3753	0.0177
<i>IFI6</i>	Interferon, alpha-inducible protein 6	91,066.031	34,870.4764	0.3829	0.0176
<i>RTN4</i>	Reticulon 4	77,564.2073	30,149.7219	0.3887	0.0127
<i>TRAF2</i>	TNF receptor-associated factor 2	2,179.4964	867.4812	0.3980	0.0012
<i>BAX</i>	BCL2-associated X protein	31,100.4779	12,461.5415	0.4007	0.0004
<i>CBX4</i>	Chromobox homolog 4	904.01	374.7688	0.4146	0.0024
<i>POU4F1</i>	POU class 4 homeobox 1	100.9253	43.3246	0.4293	0.0233
<i>DBP</i>	Albumin D box-binding protein	2,596.6681	1,171.9055	0.4513	0.0126
<i>ATF</i>	Activating transcription factor	4,450.1570	2,052.0975	0.4611	0.0401
<i>MYO18A</i>	Myosin XVIIIa	825.1191	389.5074	0.4721	0.0193
<i>SART1</i>	Squamous cell carcinoma antigen recognized by T cells	2,991.3667	1,434.5057	0.4795	0.0117

Abbreviation: Con, control.

with worse prognosis and is a predictor of poor survival in AML patients. Meanwhile, in vitro data showed over expression, *S100A8* decreased chemotherapy sensitivity and the apoptosis of leukemia cells when comparing with parental line suggesting a strong influence of *S100A8* on chemoresistance of leukemia cells. Although mechanisms of chemoresistance for *S100A8* can be multitude, and one novel finding suggested by Yang et al^{9,10} that *S100A8* enhances drug resistance by regulating autophagy. However, chemoresistance results from multiple mechanisms including dysfunctional membrane transport, resistance to apoptosis, and the persistence of stem cell-like leukemia cells or in combination were all previously published.^{26,27} Therefore, further study is needed to help predict and overcome drug resistance thereby improving chemotherapy and ultimately the outcome of AML patients.

Mitochondrion-dependent apoptosis is the key mechanism of cell death induced by chemosensitizers.²⁸ Mitochondrion-dependent apoptosis is controlled by Bcl-2 family members, which can be classified into three subfamilies: antiapoptotic members such as *Bcl-2*, *Bcl-XL*, and *Mcl-1*; proapoptotic members such as *Bax* and *Bak*; and *BH3* (Bcl-2 homology domain 3)-only members such as *Bim* and *Bad*.^{28,29} The upregulation of Bcl-2/Bax ratio expression increases the resistance to chemotherapeutic drugs, whereas the upregulation of Bcl-2/Bax ratio expression promotes the apoptotic response to anticancer drugs.³⁰ Our apoptosis PCR array result together with Western blot experiments showed that overexpression *S100A8* in combination with etoposide decreased the expression of Bax compared with control group suggesting that the antiapoptotic mechanism of *S100A8* in etoposide treated cells manifested by decreasing the expression of

the Bax protein. In addition, caspase-3 were significantly decreased in the etoposide treatment groups, compared control groups (Figure 5D), suggesting that caspase-3 pathway were involved in *S100A8* drug-resistance mechanism.

In summary, our retrospective study demonstrated the transcription level of *S100A8* in AML were significantly associated with disease prognosis and could potentially be used as a marker of future novel therapeutic targeting. Additionally, *S100A8* involved in chemoresistance via antiapoptosis way by inducing apoptosis and decreasing the expression of Bax and caspase-3 protein. These results further suggest that the transcription level of *S100A8* emerged as a strong prognostic factor in AML patients with intensive chemotherapy, refining the stratification of de novo AML. Hence, we propose that developing more specific *S100A8* inhibitor may well be beneficial for AML patients with *S100A8* overexpression.

Acknowledgments

This study was supported by grants from The National Natural Science Foundation of China (81170513, 81370627, 81170468, 81100371, 81300423, and 81570125), Jiangsu Province Key Project (BL2013014), and the Project Funded by the Priority Academic Program Development of Jiangsu Higher Education Institutions.

Disclosure

The authors report no conflicts of interest in this work.

References

- Siegel RL, Miller KD, Jemal A. Cancer statistics, 2015. *CA Cancer J Clin*. 2015;65(6):5–29.
- Vardiman JW, Thiele J, Arber DA, et al. The 2008 revision of the World Health Organization (WHO) classification of myeloid neoplasms and acute leukemia: rationale and important changes. *Blood*. 2009;114(5):937–951.
- Slovak ML, Kopecky KJ, Cassileth PA, et al. Karyotypic analysis predicts outcome of preremission and postremission therapy in adult acute myeloid leukemia: a Southwest Oncology Group/Eastern Cooperative Oncology Group Study. *Blood*. 2000;96(13):4075–4083.
- Rowe JM, Tallman MS. How I treat acute myeloid leukemia. *Blood*. 2010;116(17):3147–3156.
- Salama I, Malone PS, Mihaimeed F, Jones JL. A review of the S100 proteins in cancer. *Eur J Surg Oncol*. 2008;34(4):357–364.
- Gebhardt C, Nemeth J, Angel P, Hess J. S100A8 and S100A9 in inflammation and cancer. *Biochem Pharmacol*. 2006;72(11):1622–1631.
- Basso D, Bozzato D, Padoan A, et al. Inflammation and pancreatic cancer: molecular and functional interactions between S100A8, S100A9, NT-S100A8 and TGFbeta1. *Cell Commun Signal*. 2014;12:20.
- Yong HY, Moon A. Roles of calcium-binding proteins, S100A8 and S100A9, in invasive phenotype of human gastric cancer cells. *Arch Pharm Res*. 2007;30(1):75–81.
- Yang L, Yang M, Zhang H, et al. S100A8-targeting siRNA enhances arsenic trioxide-induced myeloid leukemia cell death by down-regulating autophagy. *Int J Mol Med*. 2012;29(1):65–72.
- Yang M, Zeng P, Kang R, et al. S100A8 contributes to drug resistance by promoting autophagy in leukemia cells. *PLoS One*. 2014;9(5):e97242.
- Spijkers-Hagelstein JA, Schneider P, Hulleman E, et al. Elevated S100A8/S100A9 expression causes glucocorticoid resistance in MLL-rearranged infant acute lymphoblastic leukemia. *Leukemia*. 2012;26(6):1255–1265.
- Nicolas E, Ramus C, Berthier S, et al. Expression of S100A8 in leukemic cells predicts poor survival in de novo AML patients. *Leukemia*. 2011;25(1):57–65.
- Zhang Y, Yang S, Wang J, et al. [Comparison of 10 mg/m² or 8 mg/m² idarubicin plus cytarabine regimen as induction chemotherapy for adult patients with newly diagnosed acute myeloid leukemia]. *Zhonghua Xue Ye Xue Za Zhi*. 2015;36(3):225–229.
- Yamada K, Furusawa S, Saito K, et al. Concurrent use of granulocyte colony-stimulating factor with low-dose cytosine arabinoside and aclarubicin for previously treated acute myelogenous leukemia: a pilot study. *Leukemia*. 1995;9(1):10–14.
- Martelli MP, Sportoletti P, Tiacci E, Martelli MF, Falini B. Mutational landscape of AML with normal cytogenetics: biological and clinical implications. *Blood Rev*. 2013;27(1):13–22.
- O'Donnell MR, Abboud CN, Altman J, et al. Acute myeloid leukemia. *J Natl Compr Canc Netw*. 2012;10(8):984–1021.
- Wu SY, Fan J, Hong D, et al. C3aR1 gene overexpressed at initial stage of acute myeloid leukemia-M2 predicting short-term survival. *Leuk Lymphoma*. 2015;56(7):2200–2202.
- Faul F, Erdfelder E, Lang AG, Buchner A. G*Power 3: a flexible statistical power analysis program for the social, behavioral, and biomedical sciences. *Behav Res Methods*. 2007;39(2):175–191.
- Goyette J, Geczy CL. Inflammation-associated S100 proteins: new mechanisms that regulate function. *Amino Acids*. 2011;41(4):821–842.
- Roth J, Vogl T, Sorg C, Sunderkotter C. Phagocyte-specific S100 proteins: a novel group of proinflammatory molecules. *Trends Immunol*. 2003;24(4):155–158.
- Heizmann CW, Fritz G, Schafer BW. S100 proteins: structure, functions and pathology. *Front Biosci*. 2002;7:d1356–d1368.
- Donato R. S100: a multigenic family of calcium-modulated proteins of the EF-hand type with intracellular and extracellular functional roles. *Int J Biochem Cell Biol*. 2001;33(7):637–668.
- Tolson JP, Flad T, Gnau V, et al. Differential detection of S100A8 in transitional cell carcinoma of the bladder by pair wise tissue proteomic and immunohistochemical analysis. *Proteomics*. 2006;6(2):697–708.
- Yui S, Mikami M, Yamazaki M. Induction of apoptotic cell death in mouse lymphoma and human leukemia cell lines by a calcium-binding protein complex, calprotectin, derived from inflammatory peritoneal exudate cells. *J Leukoc Biol*. 1995;58(6):650–658.
- Cross SS, Hamdy FC, Deloulme JC, Rehman I. Expression of S100 proteins in normal human tissues and common cancers using tissue microarrays: S100A6, S100A8, S100A9 and S100A11 are all overexpressed in common cancers. *Histopathology*. 2005;46(3):256–269.
- Esposito MT, So CW. DNA damage accumulation and repair defects in acute myeloid leukemia: implications for pathogenesis, disease progression, and chemotherapy resistance. *Chromosoma*. 2014;123(6):545–561.
- Mohamed AM, Balsat M, Thenoz M, et al. Oncogene- and drug resistance-associated alternative exon usage in acute myeloid leukemia (AML). *Oncotarget*. 2016;7(3):2889–2909.
- Kim R, Emi M, Tanabe K. Role of mitochondria as the gardens of cell death. *Cancer Chemother Pharmacol*. 2006;57(5):545–553.
- Cotter TG. Apoptosis and cancer: the genesis of a research field. *Nat Rev Cancer*. 2009;9(7):501–507.
- Balkham SE, Sargent JM, Elgie AW, Williamson CJ, Taylor CG. Comparison of BCL-2 and BAX protein expression with in vitro sensitivity to ARA-C and 6TG in AML. *Adv Exp Med Biol*. 1999;457:335–340.

Supplementary material

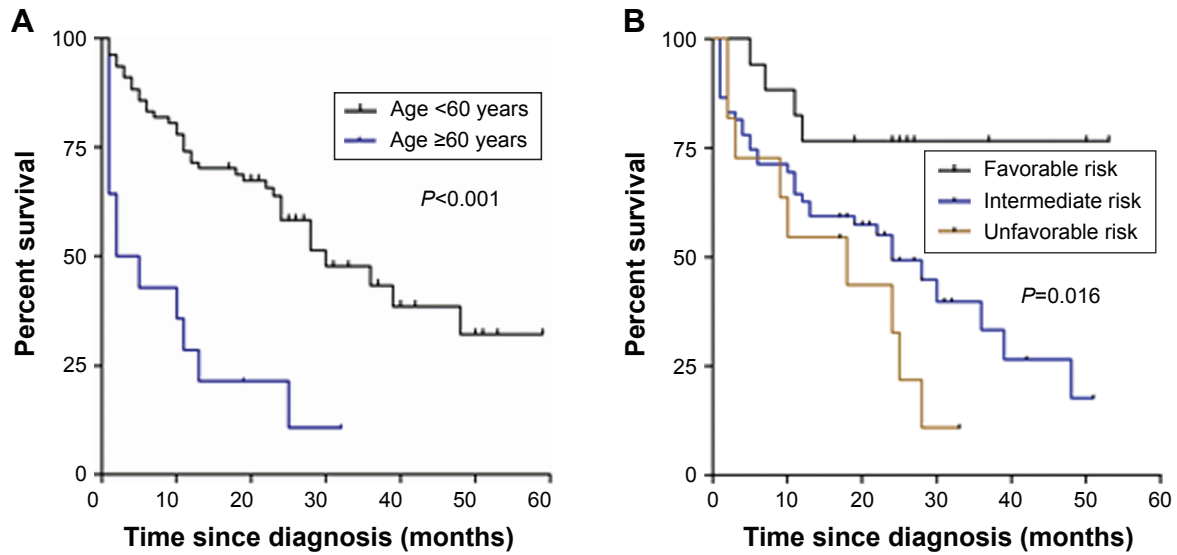


Figure S1 Overall survival of de novo AML patients in different age groups and cytogenetic risk groups.

Notes: (A) Risk stratification of de novo AML patients by a combination of age with *S100A8* transcription levels. The survival of patients <60 years old was superior to patients >60 years old ($P < 0.001$). (B) Risk stratification of de novo AML patients by a combination of cytogenetic characteristics. The survival of patients with favorable risk was superior to patients with unfavorable risk ($P = 0.016$).

Abbreviation: AML, acute myeloid leukemia.

OncoTargets and Therapy

Publish your work in this journal

OncoTargets and Therapy is an international, peer-reviewed, open access journal focusing on the pathological basis of all cancers, potential targets for therapy and treatment protocols employed to improve the management of cancer patients. The journal also focuses on the impact of management programs and new therapeutic agents and protocols on

Submit your manuscript here: <http://www.dovepress.com/oncotargets-and-therapy-journal>

patient perspectives such as quality of life, adherence and satisfaction. The manuscript management system is completely online and includes a very quick and fair peer-review system, which is all easy to use. Visit <http://www.dovepress.com/testimonials.php> to read real quotes from published authors.

Dovepress