

Protein losing enteropathy: comprehensive review of the mechanistic association with clinical and subclinical disease states

David G Levitt^{1,*}
Michael D Levitt^{2,*}

¹Department of Integrative Biology and Physiology, University of Minnesota, ²Research Service, Veterans Affairs Medical Center, Minneapolis, MN, USA

*These authors contributed equally to this work

Abstract: Protein losing enteropathy (PLE) has been associated with more than 60 different conditions, including nearly all gastrointestinal diseases (Crohn's disease, celiac, Whipple's, intestinal infections, and so on) and a large number of non-gut conditions (cardiac and liver disease, lupus, sarcoidosis, and so on). This review presents the first attempt to quantitatively understand the magnitude of the PLE in relation to the associated pathology for three different disease categories: 1) increased lymphatic pressure (e.g., lymphangiectasis); 2) diseases with mucosal erosions (e.g., Crohn's disease); and 3) diseases without mucosal erosions (e.g., celiac disease). The PLE with lymphangiectasis results from rupture of the mucosal lymphatics, with retrograde drainage of systemic lymph into the intestinal lumen with the resultant loss of CD4 T cells, which is diagnostic. Mucosal erosion PLE results from macroscopic breakdown of the mucosal barrier, with the epithelial capillaries becoming the rate-limiting factor in albumin loss. The equation derived to describe the relationship between the reduction in serum albumin (C_p) and PLE indicates that gastrointestinal albumin clearance must increase by at least 17 times normal to reduce the C_p by half. The strengths and limitations of the two quantitative measures of PLE (^{51}Cr -albumin or α_1 -antitrypsin [αAT] clearance) are reviewed. αAT provides a simple quantitative diagnostic test that is probably underused clinically. The strong, unexplained correlation between minor decreases in C_p and subsequent mortality in seemingly healthy individuals raises the question of whether subclinical PLE could account for the decreased C_p and, if so, could the mechanism responsible for PLE play a role in the increased mortality? A large-scale study correlating αAT clearance with serum albumin concentrations will be required in order to determine the role of PLE in the regulation of the serum albumin concentration of seemingly healthy subjects.

Keywords: enteropathy, albumin, Crohn's, celiac, lymphangiectasis, antitrypsin

Introduction

Protein losing enteropathy (PLE) refers to the abnormally rapid loss of serum proteins into the gut lumen. Since the first suggestion in 1947 that there was excessive loss of albumin in the stomach of patients with Menetrier's disease, PLE has been observed in more than 60 different conditions, including nearly all gastrointestinal (GI) diseases (Crohn's disease, celiac, Whipple's, intestinal infections, and so on) and a large number of non-gut conditions (cardiac and liver diseases, lupus, sarcoidosis, and so on).¹ While there is a vast literature concerning measurements of PLE in various diseases, there is a paucity of recent reviews other than those appearing in textbooks, such as the authoritative chapter by Greenwald.¹ In this review, we have strived to present a unified analysis of the entire field of PLE with a focus on understanding how basic

Correspondence: David G Levitt
Department of Integrative Biology and Physiology, University of Minnesota,
6-125 Jackson Hall, 321 Church St S. E.,
Minneapolis, MN 55455, USA
Tel +1 612 625 7649
Fax +1 612 625 5149
Email levit001@umn.edu

pathophysiologic mechanisms relate to the quantities of serum protein lost into the gut.

All blood proteins and, in some cases, blood cells are lost in PLE; however, the usual focus is on albumin. Because of the relatively long lifetime of albumin, even relatively slow leaks can appreciably increase the normal slow clearance and, hence, reduce the serum level of albumin. As discussed in our recent review of albumin metabolism, there is an unappreciated but astonishingly strong correlation between mortality in seemingly healthy individuals and relatively minor decreases in serum albumin concentration (C_p) that remains well above the lower limit of normal (3.5 g/dL).² For example, in a study of 1.7 million life insurance applicants followed for 12 years, apparently healthy 50–70-year-old males with a C_p of 3.90–4.0 g/dL (mean of all subjects=4.4 g/dL) had a relative mortality ratio of 1.82.³ Our analysis strongly suggested that a low C_p is a surrogate marker for underlying disease,² and it seems possible that an understanding of the mechanism(s) causing reduced serum albumin might provide insights into the process(es) responsible for the increased mortality. As

discussed below, the steady-state C_p represents a balance between the rate of hepatic albumin synthesis versus catabolic, urinary, and intestinal (i.e., PLE) albumin clearances. It follows that one or more of these four factors must be altered in the subclinical conditions that lead to increased mortality of mildly hypoalbuminemic subjects. In this review, we examine the possibility that unrecognized PLE could be the mechanism responsible for this hypoalbuminemia.

A novel aspect of this review is the focus on understanding PLE quantitatively in terms of the underlying pathophysiology at the vascular and mucosal level. Figure 1 shows a schematic diagram of the intestinal mucosa that will be used as the basis for our discussion. There are two possible sources of the systemic protein that is lost into the gut: the mucosal capillaries and the lymphatics. As discussed below, the quantitative and clinical features of PLE differ markedly depending on which of these two sources is involved.

The “Albumin pharmacokinetics” section briefly discusses albumin pharmacokinetics and derives the quantitative relationship between C_p and the GI protein clearance. The “Quali-

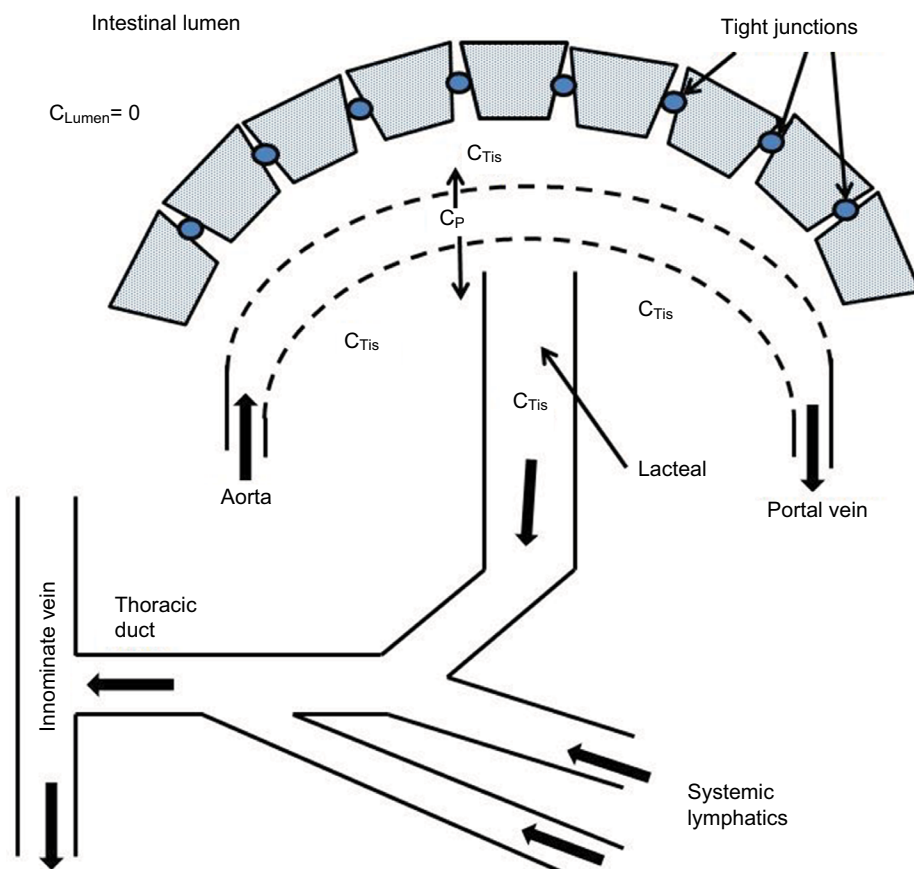


Figure 1 Schematic diagram of normal intestinal mucosa.

Notes: The epithelial cells present a diffusion barrier between the interstitial space and the lumen. The albumin that slowly leaks from the plasma (concentration= C_p) to the interstitial space (C_{Tis}) is removed by the lymphatics. The luminal albumin concentration (C_{Lumen}) is zero.

tative and quantitative measurements of PLE” section reviews the different approaches that have been developed to quantitate PLE, each of which has its strengths and limitations. A small protein loss occurs in normal subjects and the “Physiology of normal GI albumin clearance” section discusses the underlying physiology. Since more than 60 different pathologic conditions have been associated with PLE, the discussion is simplified by grouping these conditions into those thought to share common physiologic mechanisms. We will base our discussion on the organizational scheme of Greenwald that distinguishes three separate groupings: 1) increased lymphatic pressure (refer the “Increased lymphatic pressure” section); 2) mucosal erosions/ulcerations (refer the “Diseases with mucosal erosions” section); and 3) mucosa grossly intact (refer the “Diseases without mucosal erosions” section). These three classifications refer to intestinal disorders; gastric PLE is discussed as a separate problem (refer the “Gastric PLE” section). The “Genetic and animal models of PLE” section briefly discusses some animal and genetic models of PLE. Finally, in the “Summary and discussion: clinical implications of PLE” section, we briefly discuss the accepted as well as potential significance of PLE in clinical medicine.

Albumin pharmacokinetics

Analysis of albumin pharmacokinetics provides a rough estimate of the increase in the GI protein loss (PLE) required to account for varying degrees of hypoalbuminemia. In the steady state, the serum albumin concentration (C_p) is determined by a balance between the rate of hepatic albumin synthesis versus the clearance via catabolism (Cl_{Cat}), and urinary (Cl_{Ur}) and GI (Cl_{GI}) losses:

$$\begin{aligned} \text{Synthesis} &= \text{GI loss} + \text{Urinary loss} + \text{Catabolism} \\ &= (Cl_{GI} + Cl_{Ur} + Cl_{Cat}) C_p = Cl_p C_p \quad (1) \\ Cl_p &= Cl_{GI} + Cl_{Ur} + Cl_{Cat} \end{aligned}$$

where Cl_p is the total serum albumin clearance.² In the normal human, the total body albumin is about 280 g with an absolute synthesis rate (i.e., turnover) of about 150 mg/kg/day or 10.5 g/day for a 70 kg human.² This turnover corresponds to roughly 8.5% of plasma albumin or 4% of the total body albumin per day, with a total body albumin turnover time of about 25 days or a half-time of 17.3 days.² Assuming a normal C_p of 4.4 g/dL, this turnover corresponds to a serum albumin clearance (Cl_p) of about 240 mL/day for a 70 kg human. By far, the largest component of this clearance is catabolic (~90%), with urinary (Cl_{Ur}) clearance of about

4% and GI clearance (Cl_{GI}) of 6% (15 mL/day, see below). Solving Equation 1 for Cl_{GI} :

$$Cl_{GI} = \text{Synthesis} / C_p - Cl_{Ur} - Cl_{Cat} \quad (2)$$

Subtracting Equation 2 for a normal subject (Cl_{GI}^N) from that for a PLE subject (Cl_{GI}^{PLE}) and assuming that Cl_{Ur} is unchanged in PLE:

$$Cl_{GI}^{PLE} = Cl_{GI}^N + Cl_{Cat}^N - Cl_{Cat}^{PLE} + \frac{\text{Synthesis}^{PLE}}{C_p^{PLE}} - \frac{\text{Synthesis}^N}{C_p^N} \quad (3)$$

Rearranging Equation 3:

$$Cl_{GI}^{PLE} = Cl_{GI}^N + Cl_{Cat}^N \left[1 - \frac{Cl_{Cat}^{PLE}}{Cl_{Cat}^N} \right] + Cl_p^N \left[\frac{\text{Synthesis}^{PLE}}{\text{Synthesis}^N} \frac{C_p^N}{C_p^{PLE}} - 1 \right] \quad (4)$$

A lower bound estimate for Cl_{GI}^{PLE} is obtained if one assumes that both Synthesis and Cl_{Cat} remain normal in the subject with PLE in Equation 4:

$$Cl_{GI}^{PLE} > Cl_{GI}^N + Cl_p^N \left[\frac{C_p^N}{C_p^{PLE}} - 1 \right] \quad (5)$$

Equation 5 predicts that a subject with PLE who has a serum albumin of half of the normal ($C_p^N/C_p^{PLE}=2.0$) and otherwise normal albumin kinetics will have an increase in GI albumin clearance (Cl_{GI}^{PLE}) equal to the normal total albumin clearance ($Cl_p^N=240$ mL/day/70 kg) and, adding the baseline GI clearance ($Cl_{GI}^N=15$ mL/day/70 kg), a total GI clearance of 255 mL/day/70 kg corresponding to a 5.61 g/day loss into the gut. However, this represents a low estimate of GI loss because as the serum albumin concentration (C_p) falls, there is a variable homeostatic increase in the rate of albumin synthesis as well as a decrease in Cl_{Cat} ,² both of which increase the estimate of Cl_{GI}^{PLE} (Equation 4) required to maintain the serum albumin at a given level. Measurements of the rates of synthesis in patients with severe PLE (serum albumin about half normal) and normal hepatic function showed ratios of $\text{Synthesis}^{PLE}/\text{Synthesis}^N$ varying from 1.24 to 2.61.⁴⁻⁶ In a study of the response of a normal subject to a decrease in C_p produced by plasmapheresis, lowering the C_p by 20% increased the synthesis by 25%.^{2,7} In addition, there is a not commonly recognized reduction in Cl_{Cat} as C_p falls due to the competitive binding of albumin to the Fc IgG receptor (FcRn).⁸⁻¹⁰ FcRn was originally shown to bind IgG at acidic

pH, diverting it from lysosomal degradation and prolonging the lifespan of IgG. Recently, it has been shown that this receptor also binds albumin, protecting it from lysosomal degradation. Since the amount of FcRn is insufficient to bind all albumin, only a fraction is protected by this mechanism. As C_p falls, the fraction of albumin rescued increases and the Cl_{Cat} decreases, with the rate of Cl_{Cat} falling to near zero in subjects with very low serum albumin levels (congenital analbuminemia).^{2,8} As a rough approximation, we have assumed that the change in Synthesis and Cl_{Cat} as C_p falls is described by:

$$\begin{aligned} \text{Synthesis}^{\text{PLE}} / \text{Synthesis}^{\text{N}} &= 2 / (1 + C_p^{\text{PLE}} / C_p^{\text{N}}) \\ Cl_{Cat}^{\text{PLE}} &= (C_p^{\text{PLE}} / C_p^{\text{N}}) Cl_{Cat}^{\text{N}} \end{aligned} \quad (6)$$

Substituting Equation 6 into Equation 4 provides a prediction of the increase in the steady-state GI albumin clearance (Cl_{GI}) in a patient with hypoalbuminemia resulting solely from PLE. This relation is plotted in Figure 2 (assuming Cl_p^{N} , Cl_{Cat}^{N} , and Cl_{Cl}^{N} are 240, 215, and 15 mL/day, respectively). Using this more likely relationship between Cl_{GI} and C_p , the otherwise “normal” subject with a C_p of half of the normal would have to have a Cl_{GI}^{PLE} of 523 mL/day.

Qualitative and quantitative measurements of PLE

Because most serum proteins lost into the intestine are rapidly hydrolyzed and the amino acids reabsorbed, analysis of

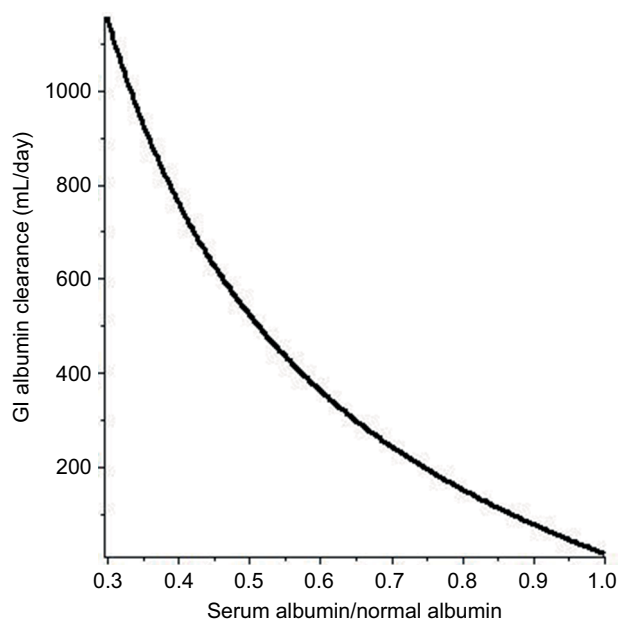


Figure 2 The predicted relationship between the increase in GI albumin clearance and the resulting steady-state serum albumin (serum albumin/normal albumin) in a PLE subject with normal renal and hepatic functions.

Abbreviations: GI, gastrointestinal; PLE, protein losing enteropathy.

intestinal or fecal contents cannot be used to diagnose PLE. In 1960, Steinfeld et al¹¹ described the first attempt to quantify PLE by measuring the percentage of an intravenous (IV) dose of ¹³¹I-polyvinylpyrrolidone (PVP) excreted in a 4-day stool collection. In a series of patients with regional enteritis or ulcerative colitis with low serum albumin, the percentage of the injected PVP excreted ranged from 2.3% to 7.4% (mean=4.1%), about 10 times the control value (range 0.16%–0.63%).¹¹ Unfortunately, ¹³¹I-PVP measurements are only qualitative because PVP has a very heterogeneous size distribution (mean molecular weight of about 40 kDa), and the gut clearance may not be representative of albumin (molecular weight of 68 kDa).^{11,12}

In 1961, Waldmann¹³ introduced what is considered to be the “gold standard”¹ for quantitating PLE: measurement of the ⁵¹Cr fecal excretion following IV administration of ⁵¹Cr-albumin. The seemingly straightforward rationale underlying this measurement is that Cr⁺³ is not secreted or absorbed from the gut – thus, ⁵¹Cr excreted in feces over a given time period must quantitatively measure the rate that labeled albumin was lost into the GI tract. The product of this radioactivity excretion rate and the specific activity of serum albumin should thus provide a precise measure of the rate at which serum albumin leaked into the gut. Unfortunately, multiple factors tend to complicate this seemingly simple technique. Albumin has a high natural affinity for Cr, and labeling is carried out simply by incubating ⁵¹Cr⁺³ with albumin. However, this labeling, which results in the binding of about 7 Cr/albumin, is heterogeneous, with some loosely bound Cr that dissociates after IV injection and binds to other blood (e.g., endogenous albumin, globulins, and transferrin) and tissue proteins. Van Tongeren and Majoor¹² and Kerr et al¹⁴ have carefully analyzed the pharmacokinetics of plasma ⁵¹Cr following an IV dose of ⁵¹Cr-albumin. There is an initial very rapid fall of serum radioactivity of about 90% over the first 4 days that markedly exceeds the rate of extravascular distribution measured simultaneously with ¹²⁵I-labeled albumin. A similar difference in the disappearance of the two radioactive labels was observed when albumin was double-labeled with both ⁵¹Cr and ¹²⁵I,^{14,15} indicating that the rapid clearance was not due to damage of albumin by Cr labeling, but rather that Cr was eluting from albumin. Since most of the rapidly disappearing ⁵¹Cr does not appear immediately in either urine or feces, it is presumably bound to extravascular tissue proteins. After about 4 days, the ⁵¹Cr decay becomes exponential, with a half time of roughly 6.6 days, about half that of ¹²⁵I-albumin (14 days). Using starch gel electrophoresis, Kerr et al¹⁴ found that 15 minutes after the IV ⁵¹Cr-labeled albumin, only about

60% of the label was in the albumin fraction, with most of the remainder in the globulin fractions. By 6 days, 80% of the ^{51}Cr activity was in the albumin fraction. The ^{51}Cr serum disappearance rates following IV infusion of $^{51}\text{CrCl}_3$ is virtually identical to that following IV infusion of pre-labeled ^{51}Cr -albumin,¹² indicating that the ^{51}Cr distributes rapidly to blood and tissue proteins, even when bound to albumin prior to the IV infusion.

These results clearly show that serum ^{51}Cr is not a strict label for albumin. Since the clearance measurement utilizes the serum ^{51}Cr concentration (not ^{51}Cr -albumin), fecal radioactivity reflects a weighted average of the leak of various serum (and, possibly, tissue) Cr binding proteins, some of which may leak more rapidly than albumin. After about 4 days when the rapid serum ^{51}Cr decay is completed, most of the serum ^{51}Cr is albumin bound and the GI ^{51}Cr clearance is, presumably, primarily a measure of GI albumin clearance (Cl_{GI}). However, the possibility remains that the gut clearance of a very small ^{51}Cr -labeled protein could be manyfold faster than albumin; thus, even a low concentration of this serum protein could appreciably distort what is assumed to be albumin clearance. As noted, the exponential total clearance rate of $^{51}\text{Cr}^{+3}$ 4 days after infusion remains roughly twice that of iodine-labeled albumin. The extent to which rapid gut clearance of non-albumin-bound $^{51}\text{Cr}^{+3}$ accounts for a fraction of this elevated total clearance remains to be determined.

Waldmann¹³ initially estimated PLE from a measurement of the percentage of the dose of the IV ^{51}Cr -labeled albumin excreted during the first 4-day fecal sample following IV injection of the labeled compound. Because of the rapid initial serum ^{51}Cr loss described above (90% over 4 days), this should be regarded as only a semi-quantitative measurement of GI albumin loss, and it does not provide an accurate measurement of GI albumin clearance (Cl_{GI}). Normal subjects excreted from 0.1% to 0.7% (mean 0.23%) of the infused dose, while patients with severe PLE (serum albumin less than half normal) excreted from 4% to 21% (100 times normal). Waldmann et al¹⁵ used this procedure in a later study of 180 subjects, 50 controls (normal C_p and no evidence of GI disease) and 130 subjects were selected because they had significant hypoalbuminemia that could not be explained on the basis of either liver disease or proteinuria, with most having some sort of GI disease. Despite the semi-quantitative nature of the fecal loss measurements and the likelihood that C_p could be influenced by factors other than PLE, a remarkably good correlation was observed between ^{51}Cr -albumin GI loss and C_p . Nearly all patients with a $C_p < 2.5$ g/dL lost more than 6% of the dose/4 days in the stool (26 times normal).

In order to accurately determine the GI serum albumin clearance, it is necessary to relate the rate of fecal ^{51}Cr -albumin excretion to the ^{51}Cr -albumin concentration (or ^{51}Cr -specific activity) in the serum at the time the ^{51}Cr -albumin in the fecal sample was passing from the serum into the gut. Waldmann et al¹⁵ estimated this clearance by measuring the daily serum ^{51}Cr concentration and the daily fecal ^{51}Cr excretion over a 12-day period and determining the ^{51}Cr clearance using the relation:

$$\text{Clearance / day} = (24 \text{ hour fecal } ^{51}\text{Cr}) / (\text{serum } ^{51}\text{Cr concentration previous day}) \quad (7)$$

averaged over days 5–12. Normal subjects cleared about 15 mL of plasma/day (6.2% of the total normal albumin clearance of 240 mL/day), while PLE subjects cleared from 50 to 1,800 mL/day. Subjects with a serum albumin about half of the normal had clearances of about 600 mL/day, in good agreement with that predicted above in the “Albumin pharmacokinetics” section (Figure 2).

It should be stressed that accurate assessment of the clearance rate requires knowledge of the serum concentration of the cleared compound at the time the compound is being removed from the circulation (not the time when the compound is exiting from the body). This is a negligible problem with urinary clearance of compounds such as creatinine or sodium, since their serum concentrations remain roughly constant over the relatively short urine collection period. However, as noted above, serum ^{51}Cr -albumin concentration declines by about 90% over the first 4 days following infusion and subsequently at a rate of roughly 6%/day. Clearance measurements made during the first few days after ^{51}Cr -albumin infusion (which has been the case in many publications) are fraught with error since it is impossible to accurately predict the serum ^{51}Cr -albumin concentration at the time the labeled protein leaked into the bowel – which might be several days prior to the passage of the fecal specimen in healthy subjects versus hours in subjects with diarrhea. Waldmann et al¹⁵ provided the most reliable clearance estimates utilizing individual fecal specimens obtained on days 5–12 after infusion of ^{51}Cr -albumin and the serum ^{51}Cr concentration obtained on the day prior to passage of the fecal sample (Equation 7), which assumes a 1-day transit time between gut leakage of protein and passage of the fecal sample. In normal controls where the plasma ^{51}Cr concentration is falling by only about 6% per day, inaccuracies in the transit time assumption induce relatively small errors. However, in subjects with severe

PLE in whom the plasma ^{51}Cr concentration may decline by 50%/day, incorrect assumptions concerning the transit time lead to sizable errors in the estimated gut clearance of albumin. In many reports, the timing of the serum ^{51}Cr -albumin measurement is not clearly stated.

The requisite radioactive exposure and the long experimental period of daily stool and serum samples (>4 days after infusion of the labeled albumin) markedly limit the clinical utility of ^{51}Cr -albumin clearance measurements. The procedure currently used to quantitate PLE is the α_1 -antitrypsin (αAT) clearance measurement, first described by Bernier et al.¹⁶ Based on the ideal assumptions that αAT is neither absorbed from nor physiologically secreted into the intestine and is resistant to intestinal proteolysis, measurement of its fecal loss should be indicative of the rate of loss of similar-sized serum proteins. Since the molecular weight of αAT is 50 kDa, only slightly less than that of albumin (67 kDa) and, as shown below, there is only weak protein size discrimination in PLE, the fecal αAT loss should be similar to that of albumin. The ideal assumptions may not be perfectly satisfied because there may be some minor and varying rates of biliary secretion of αAT , some intraluminal proteolysis (see below), and the presence of several protein complexes of αAT in feces that differ from the serum form.¹⁷ However, these factors are generally regarded as minor, and αAT clearance has become a widely accepted measure of PLE. The αAT clearance is usually determined from the amount of αAT in a 1-day fecal collection divided by the plasma αAT . A major advantage of this methodology is that αAT is produced endogenously and the serum concentration remains relatively constant, hence the timing of the serum measurement is not critical as is the case with ^{51}Cr -albumin. Alternative simpler approaches, which are only semi-quantitative and do not measure clearance, neglect the serum measurement and simply determine the fecal αAT concentration in a stool sample (mg/dry weight) or the amount of αAT in stool collected over a given period, for example, a 1-day collection. Plasma αAT has large normal variations with systematic variations observed in some diseases, such as inflammatory bowel disease (IBD) where the serum αAT is about twice normal.¹⁸ Thus, the clearance measurement is superior to the simpler approaches, as evidenced by a smaller normal range and better discrimination between normal and PLE patients.^{19,20}

There have been three studies directly comparing ^{51}Cr -albumin and αAT GI clearance in individual PLE patients, with disparate results. As discussed above, because of the initial rapid decline of plasma ^{51}Cr -albumin, accurate timing of the serum ^{51}C concentration used to calculate clearance is essential. Florent et al²¹ seemingly made the most accurate

comparison in that they collected stools for 6 days beginning 2 days after the IV infusion of $^{51}\text{CrCl}_3$ and used the daily fecal ^{51}Cr and the serum ^{51}Cr -albumin from the previous day to determine the clearance. They found a very strong linear correlation ($r=0.96$) between the αAT and ^{51}Cr clearance, with the αAT clearance about half the ^{51}Cr clearance. Quigley et al,¹⁷ using one serum ^{51}Cr sample on day 3 and the average fecal ^{51}Cr over multiple days, reported a weaker correlation ($r=0.45$) with the αAT clearance being ~60% of the ^{51}Cr clearance. They determined a PLE diagnostic sensitivity and specificity of the αAT clearance (relative to ^{51}Cr -albumin) of only 58% and 80%, respectively. Karbach et al¹⁹ found a stronger correlation ($r=0.87$), but with the αAT clearance about twice the ^{51}Cr clearance, the opposite finding to that of Florent et al and Quigley et al¹⁷ who found the αAT clearance to be about half the ^{51}Cr -albumin clearance. Karbach et al¹⁹ determined the ^{51}Cr clearance from one bulk 3-day stool collection and a zero time plasma concentration estimated from the injected ^{51}Cr -albumin dose divided by an estimation of serum volume, an obviously flawed methodology, given the previously described rapid initial decay of ^{51}Cr concentration in the plasma. We believe the conclusion of Florent et al²¹ that αAT and ^{51}Cr -albumin GI clearance are highly correlated with the αAT clearance about half that of the ^{51}Cr -albumin clearance to be the best currently available result.

Since ^{51}Cr -albumin clearance is no longer used and αAT clearance has become the current standard for quantitating PLE, we will heavily utilize αAT clearance measurements in this review. However, there is one situation in which αAT clearance is clearly an unreliable measure of PLE – when there is gastric protein loss such as that occurs in Menetrier's disease – since αAT activity is almost completely destroyed during 1 hour of incubation in gastric juice at pH <3 maintained at 37°C.²¹ Florent et al²² have shown that if one suspects gastric PLE, the αAT clearance can provide a valid measure of protein loss if cimetidine IV infusion is employed to elevate the gastric pH. It seems likely that high-dose oral protein pump inhibitor administration could be used in a similar fashion to minimize acid denaturation of αAT in the stomach.

The normal average value for the αAT clearance is about 8 mL/day¹⁹ (about half the normal ^{51}Cr -albumin clearance) with an upper limit of normal of 20 mL/day. Strygler et al²⁰ have shown that this normal range is approximately doubled in normal subjects if rapid transit is induced with lactulose, sorbitol, sodium sulfate, or phenolphthalein, and they suggested that rapid transit decreases the time for luminal αAT degradation. While the concept that half the αAT entering the gut undergoes intestinal proteolysis is appealing in that

it would explain the observation of Florent et al²¹ that the α AT clearance was about half the ⁵¹Cr-albumin clearance, it raises other questions. One problem is that this would predict that very clinically active IBD (with high PLE) with diarrhea and decreased transit times should have α AT clearances that approach ⁵¹Cr-albumin clearance. However, Florent et al²¹ observed that the GI α AT was half the ⁵¹Cr-albumin clearance for the entire range of pathologic clearances (15–400 mL/day). Second, although α AT is rapidly hydrolyzed at pH <3 in the stomach, hydrolysis is minimal during incubation for 2 hours in duodenal juice or 24 hours in feces;²¹ thus, it seems unlikely that there could be 50% hydrolysis during normal intestinal transit times. Finally, another possible explanation for why the normal GI α AT is half the ⁵¹Cr-albumin clearance is that a significant fraction (50%–100%) of the normal GI protein clearance occurs in the stomach (see below) and would be expected to be hydrolyzed. However, if this were the case, the α AT lost into the small intestine during PLE should not suffer the same hydrolysis, which is not consistent with the α AT results.²¹ In summary, the quantitative relationship between the α AT and ⁵¹Cr-albumin clearance is enigmatic. In any case, in the following sections, we will assume that the α AT clearance is an accurate indicator of GI protein loss and that, quantitatively, the α AT is about half the true (i.e., ⁵¹Cr-albumin) GI albumin clearance.

Another approach used to diagnose PLE is scintigraphy following administration of short lifetime tracer (Tc-99m, $T_{1/2}$ =6 hours or In-111, $T_{1/2}$ =2.8 days)-labeled macromolecules (albumin, transferrin, or dextran).¹ This approach does not require fecal collection and has the unique advantage that it localizes the primary site of the protein leakage. In the most thorough protocols, imaging is acquired dynamically every minute for the first hour after IV injection, then statically for 3–7 hours (early phase) and at 24 hours (late phase). The early time course provides accurate identification of the initial leakage site and following the late phase, intestinal transit of the tracer provides more accurate gut (e.g., versus hepatic or renal) localization of the tracer, increasing the sensitivity.^{23,24} In a recent meta-analysis of scintigraphy's PLE diagnostic accuracy, Khalesi et al²⁴ found a high sensitivity (87%) and a somewhat lower specificity (62%) due to confusion with non-GI radioactive distribution. Scintigraphy is becoming an increasingly popular technique to diagnose and localize PLE.

Physiology of normal GI albumin clearance

As discussed above, the normal GI albumin clearance (Cl_{GI}) is about 15 mL/day. Although the mechanism and site of

this normal loss have not been reviewed previously, it is generally assumed to represent baseline intestinal permeability. Given that the small intestine has about 25 m² as the surface area²⁵ and that the epithelial cells are rapidly turned over,²⁶ it would not be surprising if there was some obligatory albumin leak. However, as discussed here, this minimal baseline leak may not represent intestinal permeability but rather albumin in the gastric, pancreatic, and/or hepatic secretions.

Using continuous gastric aspiration, Florent et al²² estimated the hourly rate of gastric albumin clearance in normal control subjects using either ⁵¹Cr-albumin or α AT with concomitant IV cimetidine. These gastric clearances were compared with simultaneous measurements of total daily GI clearance from fecal ⁵¹Cr. Surprisingly, the gastric clearance was roughly equal to the total GI clearance, suggesting that normal GI albumin clearance is mostly or entirely gastric.

There is also evidence that biliary secretion is the source of the normal protein loss into the gut. The most direct evidence in this regard is provided by the studies of ¹⁴C-PVP excretion in dogs by Ravin et al²⁷ They showed that measurement of bile ¹⁴C-PVP equaled the fecal excretion and that diversion of bile completely eliminated the appearance of PVP in the stool. In humans, reports show the albumin concentration in hepatic bile to range from 0.5%²⁸ to 2%²⁹ of the plasma albumin. Using a human hepatic bile flow of 620 mL/day,³⁰ this corresponds to bile GI albumin clearance of 3.1–12.4 mL/day.

Low amounts of albumin are also present in pancreatic secretion. Multigner et al³¹ reported that about 1% of the total protein in normal pancreatic juice was albumin. Using a total pancreatic juice protein of 12.8 mg/mL³² and a total pancreatic secretion of 1 L/day, this corresponds to a pancreatic GI albumin clearance of about 3 mL/day. According to these results, hepatic bile plus the pancreatic secretion can account for most of the total normal albumin clearance of 15 mL/day. These results are obviously contradictory, with Florent et al²² suggesting that the normal clearance is all gastric and Ravin et al²⁷ suggesting that it is all hepatic. The gastric, hepatic, and pancreatic measurements use markedly different methodology and assumptions than the 24-hour fecal estimates of total GI albumin clearance and may not be directly comparable. However, these results suggest that the normal albumin clearance could be completely accounted for by the albumin in the normal biliary, pancreatic, or gastric secretions and is not necessarily the result of a low baseline intestinal permeability for albumin.

Increased lymphatic pressure

In his comprehensive review, Greenwald places 18 different diseases in the pathophysiologic category of increased lymphatic pressure.¹ The three best characterized examples are primary intestinal lymphangiectasia, constrictive pericarditis, and the Fontan procedure. Analysis of these three conditions provides useful diagnostic criteria for assigning a lymphangiectatic etiology to a PLE condition, and these criteria will be used to investigate whether other diseases placed in this category by Greenwald are correctly assigned.

Primary intestinal lymphangiectasis is a rare disease, first described by Waldmann et al,⁵ in which there is a central blockage of lymph drainage producing generalized lymphedema (lower leg edema, pleural effusion, and chylous ascites) in addition to PLE.³³ This condition is characterized by specific intestinal histologic (interstitial edema, dilated submucosal lymphatics) and endoscopic (edematous thickening of mucosal folds, nodular protrusions, diffuse white plaques, and white-tipped villi) findings.^{33–36} In one report, endoscopic biopsy of a "... 3 cm multilobulated cystic mass" in the duodenum "... resulted in an exudation of white, chylous material",³⁶ and there is also one report of direct duodenal sampling of a high-protein, high-fat chylous effusion in a fasting subject.³⁷ Lymphography obtained by injection of contrast in a lymphatic channel in the foot demonstrates the retrograde passage of the contrast medium into the intestinal lymphatics and out into the small intestinal lumen.^{38–41} In addition to the severe hypoalbuminemia (~2 g/dL), other characteristic abnormalities include low immunoglobulin levels (IgG, IgA, and IgM) and uniquely very low CD4 T cell counts.³³ Substitution of medium-chain triglycerides which are transported directly into portal blood rather than the lymphatic system reduces intestinal lymphatic flow with an associated partial or complete clearance of the symptoms and signs of PLE.^{42,43}

Wochner et al⁶ measured the rate of albumin synthesis (bicarbonate-¹⁴C labeling), albumin catabolism or turnover (¹³¹I-albumin time constant), and intestinal loss (⁵¹Cr-albumin in 4-day feces) in four subjects with primary lymphangiectasis. The serum albumin was about half normal and the albumin synthesis rate was about 40% greater than normal. Using the steady-state assumptions in Equations 4 and 6 (plotted in Figure 2), the GI albumin clearance (CI_{GI}^{PLE}) should have been 500 mL/day, consistent with the experimental ⁵¹Cr-albumin fecal excretion corresponding to a CI_{GI}^{PLE} of 420 mL/day, which is 30 times normal.

Constrictive pericarditis, in rare cases, can produce large, nonfluctuating increases in venous pressure (20–30 mm Hg)

that are accompanied by PLE that has a clinical presentation (symptoms, mucosal histopathology, and laboratory findings) nearly identical to that of primary lymphangiectasis.^{44–47} All these findings are normalized when the venous pressure elevations are reversed by pericardiectomy, proving that the high venous pressure leads to the increased lymphatic pressure and lymph leakage into the intestinal lumen. Wilkinson et al⁴⁷ described one subject with a venous pressure of 24 mmHg, a serum albumin of half normal, a normal albumin synthesis rate, and a 21.4% 4-day fecal ⁵¹Cr-albumin loss. After surgery, the serum albumin returned to normal and the 4-day fecal ⁵¹Cr-albumin loss fell to 0.59% (a 36-fold decrease).

The assumed pathophysiology which produces the PLE associated with constrictive pericarditis is shown in Figure 3. High systemic venous pressure produces increased intestinal lymphatic pressure which, in select cases, causes localized rupture of the intestinal lymphatics into the lumen that drains and decompresses the entire systemic lymphatic system. The albumin GI clearance (CI_{GI}^{PLE}) of 420 mL/day reported by Wochner et al⁶ would correspond to the intestinal loss of about a liter of lymph/day, assuming a lymph albumin concentration 45% of plasma.

Markedly increased central venous pressure influences lymphatic pressure by two mechanisms: first, the high venous pressure causes an imbalance in Starling forces, such that there is markedly increased capillary filtration and lymph production in the gut mucosa. This imbalance is further increased if the lymphatics rupture into the intestinal tract, markedly lowering plasma albumin and oncotic pressure. Petersen and Hastrup⁴⁶ made quantitative measurements of thoracic duct lymph flow and albumin concentration in one constrictive pericarditis subject with severe PLE and in normal controls. The thoracic duct flow in the PLE subject was 4.6 times greater than normal (4.44 versus 0.96 L/day). If the lymph flow resistance is unchanged in the PLE subject, this increased flow should, by itself, increase the downstream lymph pressure by a factor of 4.6. Second, the high pressure in the innominate vein (into which the thoracic duct drains) increases the resistance to drainage of the thoracic duct lymph flow. The importance of the latter mechanism, which is not widely appreciated, is directly supported by the observations that overt PLE is rarely seen in patients with severe portal hypertension with portal pressures that are routinely comparable or greater to those in constrictive pericarditis, but relatively normal systemic venous pressures (see below).

Surprisingly, the major focus of recent PLE clinical investigation has been the study of the mechanism and treatment

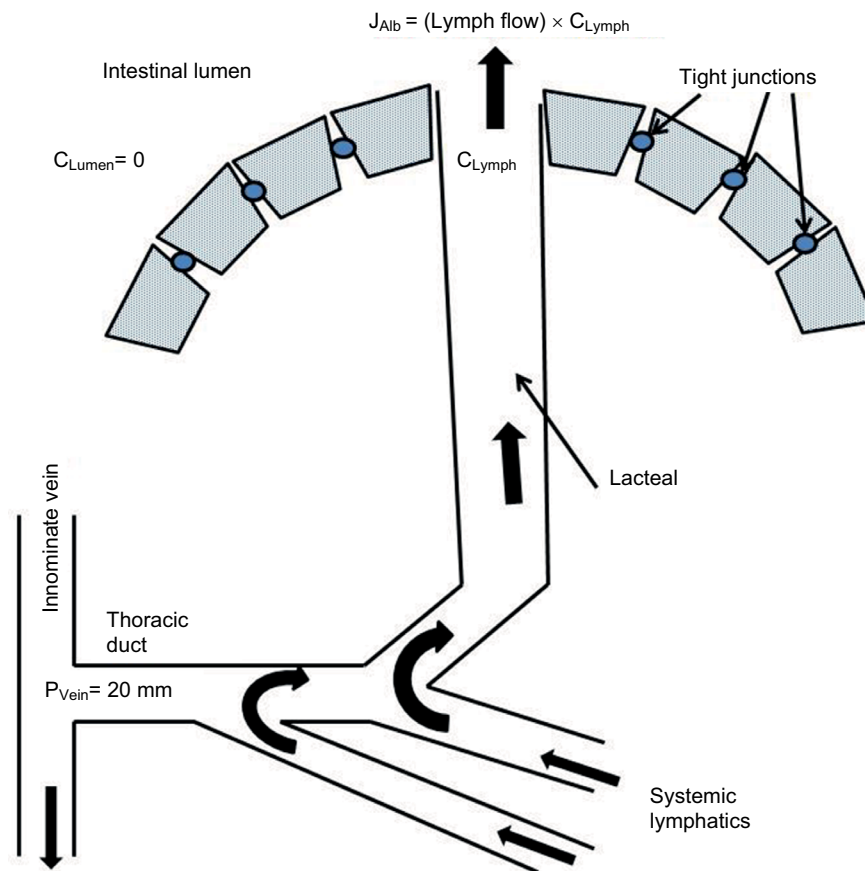


Figure 3 Schematic diagram illustrating the pathophysiology for the PLE produced by increased lymphatic pressure resulting from increased venous pressure (P_{Vein}).
Note: The lymphatic ruptures into the intestinal lumen, allowing decompression and retrograde drainage of the systemic lymph.
Abbreviation: PLE, protein losing enteropathy.

of PLE associated with the Fontan procedure, a surgical technique that involves diverting the venous blood directly to the pulmonary artery in children with a single ventricle. This procedure markedly increases the central venous pressure and in 3%–18% of subjects, PLE appears from 2 to 10 years after the surgery.⁴⁸ This rare form of PLE (prevalence of <2,000 in USA⁴⁹) has been intensively investigated because it is a leading cause of morbidity and mortality in patients undergoing the Fontan procedure.^{50,51} There is additional interest in this syndrome because it represents the best characterized “experimental model” of PLE. While all patients who have undergone a Fontan procedure have elevated venous pressure, the finding that only a minority develop PLE has led to speculation as to the etiology of the PLE. Initially, it was suggested that the decreased mesenteric blood flow associated with the procedure was the primary event leading to intestinal mucosal damage and protein leakage.⁵² However, the mucosal histology in PLE of these subjects is identical to that found in primary intestinal lymphangiectasia and constrictive pericarditis,^{52–57} and it is now generally accepted that the PLE

is the result of the high systemic venous pressure that leads to lymphatic rupture in the gut. Direct evidence that PLE in Fontan subjects results from the increased lymphatic pressure is provided by the recent description of dramatic improvement of PLE following diversion of the innominate vein (which drains the thoracic duct) to the low-pressure atrium.⁵⁵ The deleterious effect of the resultant shunting of blood past the lung with the concomitant arterial desaturation is considered to be of minor clinical importance relative to the benefit that is achieved with the alleviation of the PLE.

It is not clear why only some Fontan subjects develop PLE. There is a correlation of PLE with the central venous pressure at the time of development of PLE, but this correlation disappears during the chronic phase.⁵⁸ However, this correlation is weak, with some patients developing PLE even though they have a “good” surgical result (i.e., right atrial pressure <15 mmHg).⁵¹ The most likely explanation is that the lymphatic system is operating near capacity in most subjects following the Fontan procedure and either some predisposing defect (e.g., congenital lymphatic malformation) or an event

such as an infection^{56,59,60} results in the rupture of the lymphatics in a localized area of the intestine.⁵¹ Direct support for the localization of the leak is provided by the observations that scintigraphy often demonstrates localized areas of leaks and resection of the identified region alleviates the PLE.⁵⁶

This observation that only a subset of Fontan patients has overt clinical signs of PLE (e.g., edema, effusions, and so on) raises the question as to whether the remainder of the subjects have subclinical PLE. The vast majority of this well-studied group of patients had normal serum albumin^{61–63} and stool α AT clearance or concentration that was normal^{61,64} or only slightly elevated (~ 2 -fold).^{62,63} Thus, the relatively high venous pressure (~ 12 mmHg) routinely observed in Fontan subjects usually does not produce appreciable albumin leakage into the gut, that is, PLE is an all or none phenomenon in these subjects. It is necessary to postulate that some unidentified abnormality other than elevated venous pressure must render a subset of Fontan subjects susceptible to chronic lymphatic rupture. The PLE observed in Fontan subjects has been reported to be triggered by an enteric infection.^{59,60} It seems possible that such tissue injury initiates PLE, which then becomes self-sustaining, possibly in part secondary to the enhanced lymph production engendered by the hypoalbuminemia that results from protein loss into the gut.

The occurrence of lymphatic PLE produced by the increased systemic venous pressure with constrictive pericarditis or the

Fontan procedure raises the question of whether PLE is also associated with the very common problem of congestive heart failure (CHF). Although there are case reports of PLE in patients with CHF,⁶⁵ it is a very rare association. Berkowitz and Segal⁶⁶ measured α AT clearance in 25 patients with severe heart failure and found only one abnormally high value (four times normal; data plotted in Figure 4).

Unlike the situation with constrictive pericarditis or the Fontan procedure, the systemic venous pressure draining the thoracic duct is close to normal in patients with portal hypertension secondary to liver disease or portal vein obstruction. The markedly increased portal vein pressure leads to increased liver sinusoidal and intestinal capillary fluid filtration, which is balanced by an increase in thoracic duct flow, which theoretically could also produce lymphatic PLE. Dumont and Mulholland⁶⁷ measured thoracic duct pressures and flows in 20 patients with long-standing liver dysfunction (17 with ascites) and all had increased pressures and flows, from 2 to 10 times normal. Hypoalbuminemia is routinely associated with portal hypertension and an important clinical question is with what frequency does PLE cause/contribute to this hypoalbuminemia. A few case reports have documented that portal hypertension can cause PLE by a clear-cut lymphangiectatic mechanism, but this association appears to be rare. Stanley et al⁶⁸ described a patient with portal hypertension with PLE documented by whole gut lavage (α AT 100

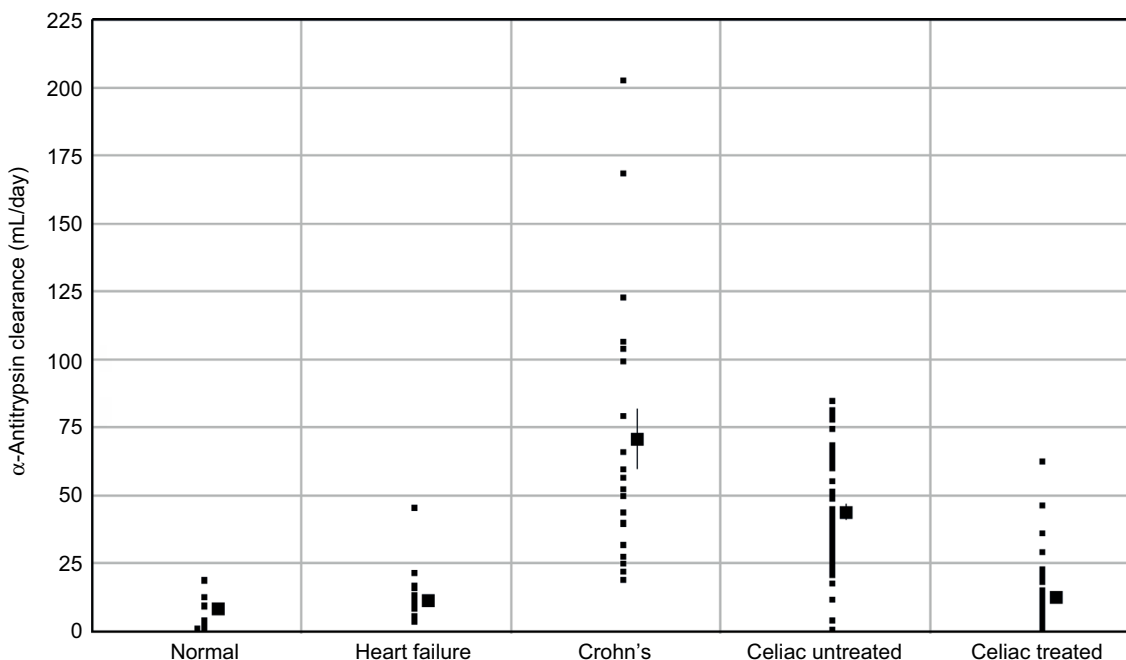


Figure 4 Fecal α -antitrypsin clearance in various disease states.

Notes: The "normal" clearance corresponds to the control data for the Crohn's disease study (mean=8.3 mL/day, range of 1.5–19.2 mL/day). In patients with heart failure, the clearance is normal except for one patient. In contrast, most subjects with Crohn's or celiac disease have a statistically significant increase in clearance.

times normal) and edematous villi with distended lymphatics on biopsy, all of which returned to normal following a transjugular intrahepatic portosystemic shunt. Wong et al⁶⁹ described a patient with severe liver disease and portal hypertension with a serum albumin one-fourth of the normal, with the classical lymphangiectatic intestinal biopsy and PLE documented by an α AT clearance of 10-fold normal which was reversed by liver transplantation. There are surprisingly few large-scale clinical studies of the association of PLE with liver cirrhosis and portal hypertension. Georgopoulos et al⁷⁰ studied 12 patients with moderate to severe alcoholic cirrhosis and portal hypertension. All had low serum albumin (mean of two-thirds of normal) and 9 of the 12 had ascites. None of them had PLE as defined by an increased whole gut lavage α AT. In an older study, Davcev et al⁷¹ studied 18 patients with advanced liver cirrhosis (alcoholic and viral origin) and used ¹³¹I-PVP to measure PLE. Two of the 18 had significantly increased PVP secretion and both of these had classical intestinal mucosal lymphangiectasia on biopsy.

These results for portal hypertension and CHF are similar to those described above for the Fontan procedure, with PLE occurring only in a very small subset of patients. Thus, the PLE produced by increased venous pressure seems to be an all or none phenomenon, with no PLE occurring until the downstream lymphatic pressure gets high enough to rupture the lymphatics locally into the intestine, draining and decompressing the entire lymphatic system. The fact that most Fontan or CHF patients with markedly increased systemic venous pressure or cirrhotic patients with large increases in portal vein pressure do not have PLE indicates that increased mucosal capillary pressure (and the concomitant increase in mucosal interstitial pressure) does not by itself produce PLE.

Greenwald¹ assigns several PLE disease entities to multiple pathophysiologic categories. For example, Whipple's disease and systemic lupus erythematosus (SLE) are in both the "No mucosal erosion" and "Increased lymph pressure" (i.e., lymphangiectasis) classes and Crohn's disease is in both the "Mucosal erosion" and "Increased lymph pressure" classes. This is an indication of the poorly understood pathology of PLE and the difficulty of assigning a definite mechanism. One would predict that there should be marked differences in the hematologic findings in the three categories of PLE since in lymphangiectasia there is bulk loss of lymph, including the lymphoid cells, whereas the other two classifications have negligible cellular loss. As predicted, the characteristic findings in the three classical increased lymph pressure conditions discussed above (primary lymphangiectasis, constrictive pericarditis, Fontan procedure) are

lymphopenia and a dramatic decrease in CD4 T cells (about 10% of normal).^{53,72,73} This selective depletion of CD4 cells presumably reflects the tendency of CD4 cells to circulate in lymph, whereas other immunologic cells are more tissue bound.⁷² Thus, the low CD4 cell count is a direct quantitative measure of bulk lymph loss into the intestine and the CD4 cell count can be used as a simple hematologic marker of lymphangiectasis. Surprisingly, this simple diagnostic criterion is not widely recognized.

One would also predict that, since there is bulk loss of lymph in lymphangiectasis, the rate of loss of plasma proteins should be proportional to the lymph protein concentration. Bendixen et al⁷⁴ simultaneously measured the steady-state ¹²⁵I-albumin and ¹³¹I-IgG loss in seven lymphangiectasis patients. The rate of IgG loss was 75% that of albumin, just what one would predict from intestinal lymph IgG concentration, that is, 75% of the albumin concentration.^{75,76} The rate of protein loss does not discriminate between the three PLE classes because, as discussed below, in both the "No mucosal erosion" (e.g., celiac disease) and the "Mucosal erosion" (e.g., Crohn's disease), there is minimal size discrimination and the PLE loss rate is also proportional to the lymph concentration.

Diseases with mucosal erosions

Greenwald lists more than 20 diseases in this category, including malignancies (e.g., lymphoma, Kaposi's sarcoma), infectious diseases (e.g., *Clostridium difficile*, *Shigella*), sarcoidosis, and IBD (e.g., Crohn's disease, ulcerative colitis).¹ Crohn's disease is, by far, the best characterized and the most intensely investigated, and we will focus on this condition as the classic example of this PLE class. Crohn's disease is characterized by local areas of chronic inflammation which lead to surface erosions and ulcers.⁷⁷ Even in the early, mild form of the disease, focal erosions are present and, on endoscopy, these erosions may be visibly oozing a serous material.⁷⁸ These erosions represent a clear breakdown of the normal mucosal permeability barrier and are an obvious candidate for the site of the PLE. This situation is schematically illustrated in Figure 5, where there is a breakdown of the mucosal barrier allowing free passage of interstitial protein into the intestine. Since the Crohn's disease involves both the small bowel and/or colon, the details of the albumin permeability and surface area will obviously differ markedly depending on the location of the erosions.

As indicated in Figure 5, the rate of albumin loss at these erosion sites probably becomes limited by the normal capillary albumin permeability. In normal subjects, the flux

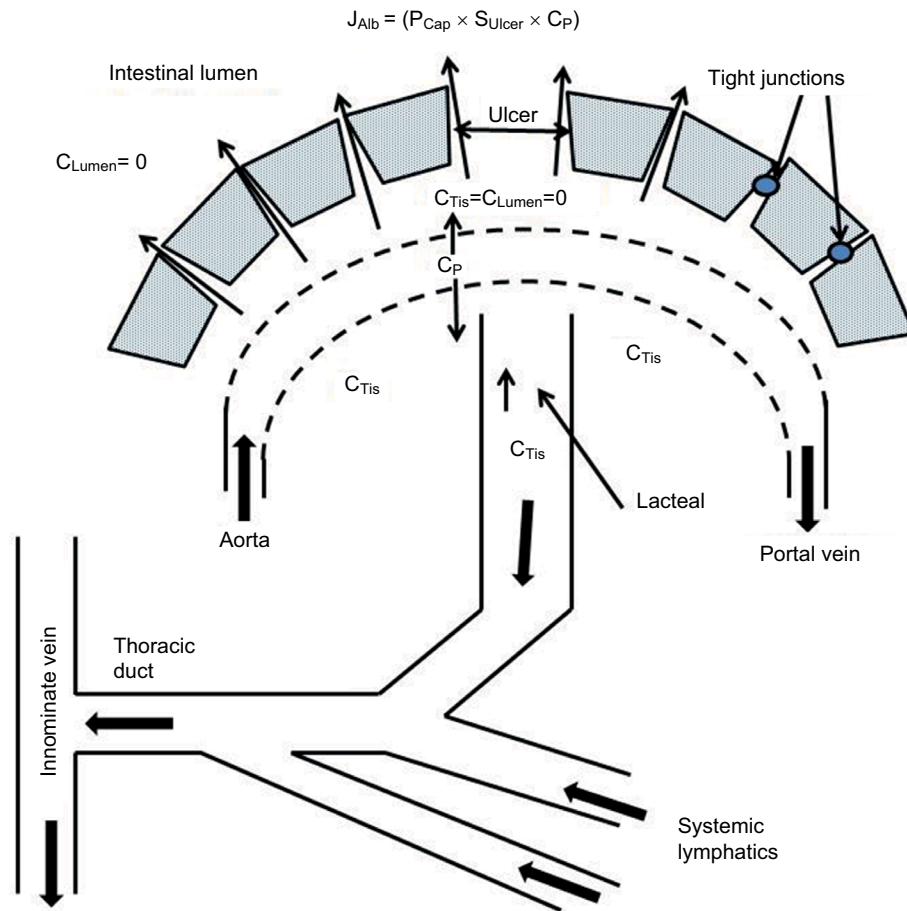


Figure 5 Schematic diagram of the PLE occurring in diseases with mucosal erosions.

Note: Because of the large breaks in the epithelial permeability barrier, the capillaries become the rate-limiting step in the leak of serum albumin and the interstitial albumin (C_{Tis}) locally equilibrates with the lumen ($C_{Tis} = C_{Lumen} = 0$).

Abbreviation: PLE, protein losing enteropathy.

of albumin across the capillary (J_{CapAlb}) is balanced by the returning intestinal lymph flow rate (J_{Lymph}) times the lymph concentration (C_{Lymph}) which is equal to the interstitial albumin concentration (C_{Tis}):

$$\begin{aligned}
 J_{CapAlb} &= P_{Cap} S_{Cap} (C_p - C_{Tis}) = P_{Cap} S_{Cap} \\
 (C_p - C_{Lymph}) &= J_{Lymph} C_{Lymph} \quad (8) \\
 \Rightarrow C_{Lymph} / C_p &= P_{Cap} S_{Cap} / (J_{Lymph} + P_{Cap} S_{Cap})
 \end{aligned}$$

where S_{Cap} and P_{Cap} are the capillary surface area and albumin permeability, respectively. As shown in Equation 8, the lymph/plasma concentration ratio (C_{Lymph}/C_p) provides a measure of the capillary permeability (P_{Cap}). The total thoracic duct lymph flow is about 2 L/day, of which about half (≈ 1 L/day) is intestinal (mesenteric).^{79,80} Since $C_{Lymph} = C_{Tis} \approx 2.2$ g/dL, about half C_p ⁷⁵ the normal J_{CapAlb} is about 22 g/day, corresponding to a clearance ($=J_{CapAlb}/C_p$) of 500 mL/day (about twice the

total rate of normal albumin synthesis). As illustrated in Figure 5, in the regions where the epithelial barrier is lost, the C_{Tis} should fall to zero, so that the diffusional gradient ($C_p - C_{Tis}$) is doubled and, from Equation 8, the maximum possible PLE clearance if the entire mucosal barrier was lost would be 1,000 mL/day, twice the normal J_{CapAlb} . Thus, the PLE albumin clearance should be proportional to the fraction of the total intestinal mucosa that is involved in the Crohn's disease, varying from 0 for completely normal intestine to a maximum 1,000 mL/day if the entire intestinal mucosal surface were involved. This rough estimate assumes that the capillary permeability remains normal in the ulcerated area.

This description of GI albumin clearance can be quantitatively compared with the measurements of α AT clearance in a large series of patients with active Crohn's disease plotted in Figure 4 (data from Karbach et al¹⁹). It can be seen that the α AT clearance is from 10 mL/day up to 200 mL/day greater than the normal clearance. Using the above estimate

of mucosal capillary permeability, this would correspond to a loss from 1% to 20% of the normal intestinal mucosal barrier. It is important to recognize the marked difference in the pattern of α AT clearance in Crohn's disease versus patients with increased lymphatic pressure (e.g., cirrhosis, heart failure, Fontan). In the latter, the α AT clearance is normal in the great majority of patients and becomes markedly abnormal only when the lymphatics rupture with leak of gross lymph into the intestine. In contrast, in active Crohn's disease, all patients have a greater than normal α AT, as one would predict if the clearance were proportional to the fraction of intestine involved.

If the capillary is the rate-limiting barrier in diseases with mucosal erosions, the rate of PLE of albumin (68 kDa) versus IgG (150 kDa) should be determined by the normal capillary permeability. In direct measurements of the rabbit small intestinal capillary permeability using I-labeled albumin and IgG, Bill reported that the albumin permeability was about twice that of IgG.⁸¹ Estimates of the intestinal capillary permeability from the steady-state intestinal lymph/plasma ratio ($C_{\text{Lymph}}/C_{\text{p}}$, Equation 8) suggest less size selectivity. Vaerman and Heremans⁷⁶ measured the dog mesenteric lymph/plasma ratio for endogenous proteins varying in molecular weight from 44 kDa (orosomucoid) to 890 kDa (IgM). Although they did find a correlation between molecular weight and lymph/plasma ratio, the selectivity was surprisingly small, with IgG and IgM ratios of about 75% and 30% that of albumin, respectively. Beh et al⁷⁵ found that, in sheep, albumin and IgG had nearly identical intestinal lymph/plasma ratios, indicating no size discrimination. These lymph/plasma permeability estimates assume that there is negligible local intestinal protein synthesis, which seems to be the case with the exception of IgA.⁷⁶

These results indicate that there is minimal size discrimination in the intestinal capillary permeability of albumin versus IgG and, if this is the limiting barrier in PLE, one would predict that albumin and IgG should be lost at similar rates in PLE. Kingham and Loehry⁸² determined the selectivity of small intestinal loss into perfused small intestinal segments with radiologically identified Crohn's disease using IV-injected ¹²⁵I-PVP with a size range of 8–80 kDa. In normal subjects, the small intestinal epithelial permeability of the largest PVP (80 kDa) was about a 1,000-fold less than that of the smallest (8 kDa). In contrast, in Crohn's disease, there was only about a 10-fold difference and, in the size range of about 40–80 kDa, there was almost no size discrimination, in agreement with the above prediction based on the finding of a normal albumin versus IgG capillary permeability.

Bendixen et al⁷⁴ simultaneously measured the steady-state ¹²⁵I-albumin and ¹³¹I-IgG synthesis rates and the PLE rate using ⁵⁹Fe-dextrin in 10 cases of Crohn's disease. They found that the IgG and albumin synthesis rates were increased in proportion to the ⁵⁹Fe-dextrin fecal clearance. The increase in the synthesis rate was about 45% greater for IgG than albumin, which they interpreted as indicating that there was increased catabolism of IgG in Crohn's disease, in addition to the IgG PLE loss.

In contrast to the situation with lymphangiectasia, the increase in permeability produced by mucosal erosions should be bidirectional. That this is the case is confirmed by measurements of the rate of intestinal absorption of solutes that are normally impermeable, such as polyethylene glycol (PEG),⁸³ ethylene glycol tetraacetic acid (EGTA),⁸⁴ or lactulose.^{85,86} Probably, the best available measurement of intestinal permeability is the ratio of the absorption of orally administered lactulose/mannitol or lactulose/L-rhamnose, determined from a 5-hour urine collection. Lactulose normally has a very low permeability, while mannitol and L-rhamnose are inert markers that have a finite permeability through the normal tight junction complex (Figure 1) and correct for changes in transit time (e.g., diarrhea) and surface area (e.g., in celiac disease). In normal subjects, the lactulose/mannitol ratio is 0.02, increasing to about 0.07 in Crohn's disease.⁸⁶ Figure 6 shows a plot of the lactulose/mannitol ratio for controls versus patients with moderate to severe Crohn's disease (data from Murphy et al⁸⁶). The distribution of the increase in lactulose permeability is similar to the increase in α AT clearance in Crohn's disease, as plotted in Figure 4. This would be predicted for erosions that produce a large, nonselective increase in epithelial permeability (Figure 5) that cannot distinguish between lactulose versus α AT (or albumin). The nonselectivity of the leak is also demonstrated by measurements of the absorption of PEG 600 from isolated, perfused ileal segments in humans.⁸³ PEG 600 has a distribution of molecular weights varying from 590 to 942 Da. In normal subjects, the absorption decreases from 0.45% for 590 Da to 0.05% for the 942 Da PEG. In ileal loops with Crohn's disease, the absorption rate of the largest PEG (942 Da) increases 25-fold to 1.25% and is not dependent on the molecular size, confirming the nonselectivity of the erosion permeability defect.

Greenwald places Crohn's disease in both the "Mucosal erosion" and "Increased lymph pressure" categories because the local inflammatory response may be associated with lymphangiogenesis, focal lymphatic obstruction, submucosal edema, and dilation of lacteals.^{87–89} However, this local pathologic response differs markedly from the "Increased lymph

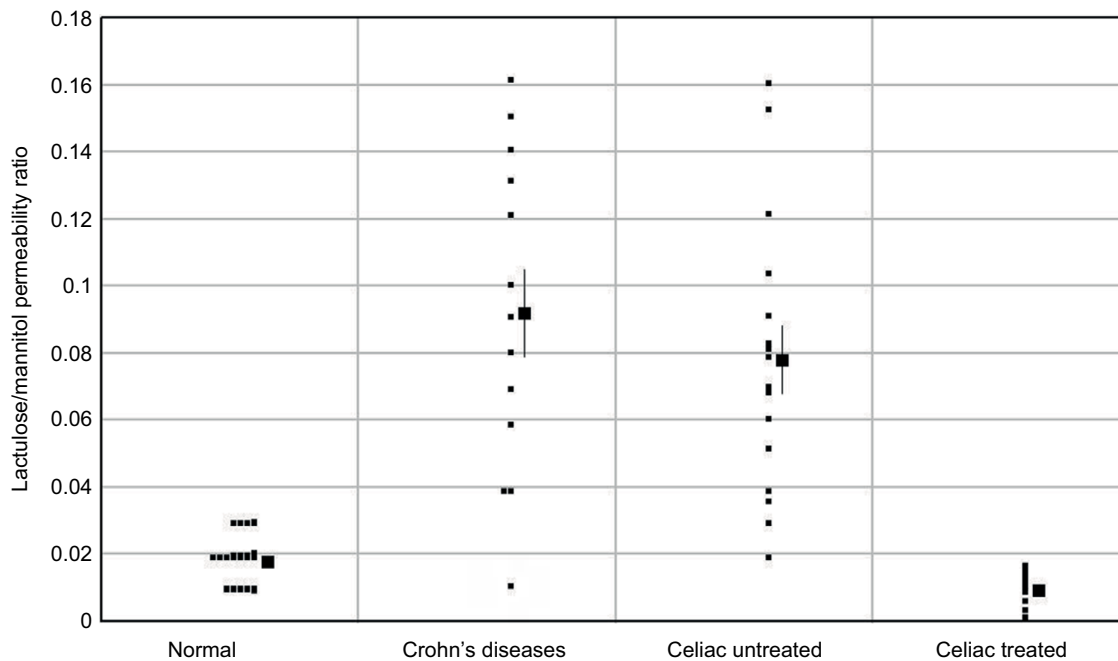


Figure 6 The lactulose/mannitol permeability ratio in Crohn's and celiac diseases.

pressure” events described above, where there is a central blockage of the systemic lymph flow, producing a rupture in which the total body lymph leaks into the intestine. It is unlikely that a local lymph obstruction could produce enough pressure to produce this rupture and, if it did, it would result in only small, local lymph losses. Consistent with this, CD4 T cell levels which, as discussed above, are markedly reduced in the “Increased lymph pressure diseases” are normal in Crohn's disease,⁹⁰ ruling out any large lymphatic leak.

Diseases without mucosal erosions

Greenwald places more than 20 diseases in this category, including celiac disease, Whipple's disease, SLE, cobalamin deficiency, and so on.¹ Although all these diseases have varying and clearly defined changes in the intestinal epithelium, the mucosa appears grossly intact and there is no obvious break in the diffusional barrier. As shown schematically in Figure 7, it is usually assumed that there is some defect in the tight junction complex.⁹¹

We will focus on celiac disease because it is the best characterized and a classic example of this form of PLE. In contrast to the localized focal erosions in Crohn's disease, the pathologic mucosal changes in celiac disease are diffuse and widespread, usually involving most of the jejunum. It seems likely that, in this case, the mucosal permeability is rate limiting (Figure 7), unlike the case for Crohn's disease where the capillaries are limiting, and the net albumin leak rate (J_{Alb}) is described by:

$$J_{\text{Alb}} = P_{\text{Epith}} S_{\text{Epith}} C_{\text{Tis}} \quad (9)$$

where P_{Epith} and S_{Epith} are the permeability and surface area, respectively, of the affected mucosa and C_{Tis} is the interstitial albumin concentration.

Figure 4 shows the distribution of α AT clearance in untreated and treated celiac patients (data from Bai et al¹⁸). The clearance is significantly increased in most patients, varying from 20 to 90 mL/day, similar to but less than in severe Crohn's disease. In celiac patients treated with a gluten-free diet, the α AT clearance returns to normal (Figure 4). Again, one would expect the increased permeability to be bidirectional, and Figure 6 shows the ratio of the lactulose/L-rhamnose permeability for treated and untreated celiacs (data from Stenhammar et al⁹²). (These ratios have been scaled in Figure 6, so that the normal lactulose/L-rhamnose ratio is equal to that of the normal lactulose/mannitol ratio in the Crohn's disease study.) Again, the increase in the lactulose permeability in celiac patients has a quantitatively similar distribution as the increased α AT clearance (compare Figures 4 and 6). This strongly suggests that the breakdown of the mucosal permeability barrier has a large enough pore size that it does not discriminate between lactulose and α AT (or albumin) and the magnitude of the leak is presumably proportional to the fraction of tight junctions that are defective (P_{Epith}) and the surface area of the intestine that is involved (S_{Epith}), as shown in Equation 9. Direct evidence for the relative nonselectivity of

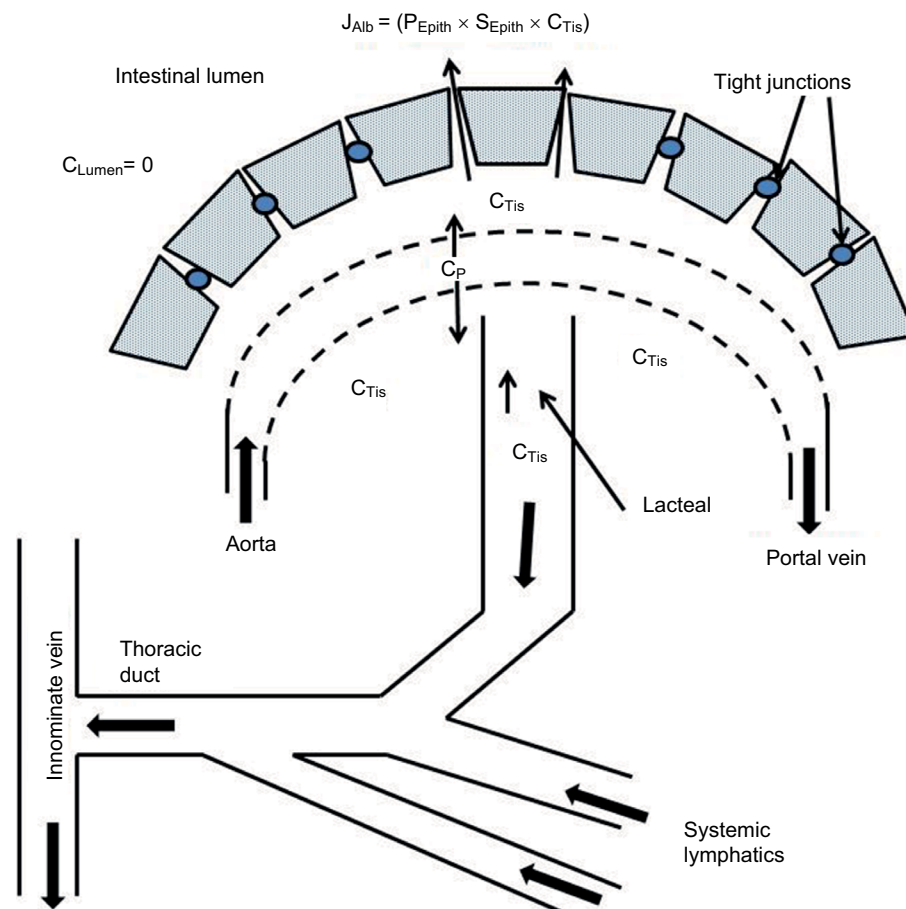


Figure 7 Schematic diagram of the PLE occurring in diseases without mucosal erosions.

Notes: It is assumed that the increased permeability results from a defect in the epithelial tight junctions. The epithelium is the rate-limiting step in the albumin leak and the interstitial albumin (C_{Tis}) is greater than that in the lumen ($C_{Lumen}=0$).

Abbreviation: PLE, protein losing enteropathy.

the leak in celiac disease is provided by measurements of the rate of leak of IV-injected ^{125}I -PVP using the same techniques described above for Crohn's disease.⁸² The loss of the normal size selectivity in celiac disease was nearly identical to that in Crohn's, with only about a 10-fold difference in clearance between the smallest (8,000) and largest (80,000) PVP and, in the size range of about 40,000–80,000, there was almost no size discrimination.

More than 20 other diseases are usually placed in this category of diseases without mucosal erosions.¹ We will discuss two of these in order to illustrate the markedly different pathologies in this category. Patients with active Whipple's disease often have severe PLE that is responsible for marked hypoalbuminemia with a C_p of <2.5 g/dL and GI albumin clearance 20 times greater than normal.⁹³ Although the villi in these patients may be markedly abnormal and distended by large lipid droplets, the epithelial layer appears intact and there is no obvious site of protein leakage.⁹⁴ Similarly, although rare, SLE can be associated with severe PLE with

αAT clearance of 800 mL/day (100 times normal) and a C_p of 1.5 g/dL.^{95,96} As demonstrated by $^{99\text{m}}\text{Tc}$ scintigraphy, the leak in SLE occurs over most of the small intestine.⁹⁶ Small bowel biopsies in SLE patients with PLE may show mild mucosal edema and inflammatory infiltrate, but otherwise they are relatively normal with no evidence of mucosal ulceration or lymphangiectasis.⁹⁵ Greenwald placed Whipple's and SLE in both the "nonerosion" and "increased lymph pressure" classes. This latter classification is because of the lymphopenia and dilated intestinal mucosal lymphatics seen in Whipple's disease⁹³ and the systemic edema along with the appearance of lymphangiectasis and intestinal mucosal edema on biopsy in some, but not all, SLE patients.⁹⁶ However, since neither Whipple's^{93,97,98} nor SLE^{96,99} patients have the reduced CD4 counts that are characteristic of lymphatic leaks (see above), it seems unlikely that their PLE mechanism is the result of ruptured lymphatics.

These three diseases (celiac, Whipple's, and SLE) are typical of the diseases in this class in that, although there

may be some pathologic changes in the mucosa, the epithelial permeability barrier appears intact at the light microscopic level. This has led to the standard assumption of some sort of tight junction defect that allows relatively free passage of molecules as large as albumin (Figure 7). Clayburgh et al¹⁰⁰ have discussed the evidence that tight junctions are dynamic structures whose permeability can be altered by bacterial infection or inflammatory immune responses. The immature cells in the crypts of normal mucosa occasionally have disorganized tight junction strands that disappear as the cells mature. Because of the shortened lifetime and increased turnover of the cells in celiac disease, there is a significantly increased fraction of this disorganization and an increase in the number of strand discontinuities.^{101,102} However, it should be emphasized that these changes are relatively minor and that there is no direct evidence that the leak occurs through tight junctions. A later section describes some experimental models that suggest that tight junction pathology can lead to PLE analogous to that seen, for example, in celiac disease.

Gastric PLE

Menetrier's disease (hypoproteinemic hypertrophic gastropathy) was the first disease entity in which PLE was documented and quantitated.¹⁰³ It is characterized by massive hyperplasia of the surface and mucus cells, with grossly enlarged folds in the fundus and body of the stomach. Although, as the name implies, hypoproteinemia (albuminemia) is a defining feature of the classical syndrome, patients can present with similar gross pathology without the PLE, and it is not clear if these cases represent completely different diseases.¹⁰⁴ Meuwissen et al¹⁰⁵ emphasize the importance of documenting the decreased acid secretion that is characteristic of Menetrier's, in order to distinguish it from Zollinger–Ellison syndrome. The etiology is unknown, although there have been suggestions of associated infections such as *Helicobacter pylori*, herpes simplex virus, or cytomegalovirus.¹⁰⁶ Efficacy of treatments with *H. pylori* eradication, antibiotics, prednisone, and octreotide is inconsistent.¹⁰⁶ Although increased epidermal growth factor (EGF) ligands have been implicated in its pathology, treatment with EGF-blocking monoclonal antibodies has been disappointing.^{107,108} The only definitive treatment is gastrectomy, which relieves all the symptoms, including hypoproteinemia. There is a nearly identical PLE disorder in children that, unlike the adult form, is acute, resolves spontaneously, and has a strong association with cytomegalovirus infection.¹⁰⁹

The PLE in Menetrier's is clearly localized to the stomach. The early studies of Citrin et al¹⁰³ and Jarnum and Jensen¹¹⁰

measured the appearance of iodine-labeled albumin and/or globulin in the stomach using extended periods of continuous gastric aspiration and compared this to measurement of total body albumin or globulin clearance. These are underestimates because of the rapid proteolysis that occurs in gastric secretions (hence the incentive for the later development of the Cr⁵¹-albumin technique). This proteolysis is variable and is decreased in patients with achlorhydria.¹¹⁰ Despite this underestimate, most of the increased albumin turnover in the Menetrier's subject could be accounted for by the gastric loss. For example, in one patient studied by Citrin et al,¹⁰³ the total albumin turnover was 17.6 g/day (7.1 g/day greater than the normal value of 10.5 g/day) and the concentration of ¹³¹I albumin in the 2 L/day of aspirated gastric juice was 4 g/L, corresponding to a gastric loss of 8 g/day. Jarnum and Jensen¹¹⁰ found that the rate of gastric albumin loss into the aspirate was four times greater when secretion was stimulated with histamine versus hexamethonium inhibition. Also, Reinhart et al¹¹¹ observed a similar 4-fold increase in ⁵¹Cr secretion above the basal level with IV pentagastrin, indicating that albumin loss is directly related to the secretion rate. Following IV administration of ⁵¹Cr-albumin in Menetrier's subjects, Florent et al²¹ compared the total GI protein loss determined from daily fecal ⁵¹Cr to the gastric ⁵¹Cr loss in a 90-minute gastric aspirate. They found that the gastric loss (extrapolated to 24 hours) represented about half the total daily GI loss. However, since the aspiration is by necessity in fasting subjects with reduced gastric secretion rates, this discrepancy is not surprising.

The major new development in the field of Menetrier's is its association with EGF receptor ligands such as transforming growth factor α (TGF- α).¹¹² Enhanced production of TGF- α has been found in Menetrier's subjects.¹¹² More convincingly, transgenic mice overexpressing TGF- α develop severe gastric adenomatous hyperplasia that is strikingly similar to Menetrier's.¹¹³ Unfortunately, treatments of the Menetrier's with TGF-blocking monoclonal antibodies have had only limited success.^{107,108} The transgenic mice produce increased mucus-laden secretions, but do not secrete albumin. As discussed above, there is a human variant of Menetrier's that is not associated with PLE; thus, the protein loss is not of necessity associated with the gross pathologic features that characterize Menetrier's.

The mechanism of the gastric protein loss in Menetrier's is uncertain. One can rule out a lymphangiectasia mechanism because Miura et al¹¹⁴ carried out lymphographic studies in four Menetrier's patients and found either no pathology or only minor local changes. There are no obvious gastric

erosions or ulcers; Greenwald¹ puts it in the “Diseases without erosions” category and it is usually assumed that there is a tight junction leak, similar to the mechanism described above for cystic fibrosis. Consistent with this, Oderda et al¹¹⁵ reported that the gastric epithelial tight junctions’ width is increased from the normal 7.43 nm to about 10 nm. As discussed above for celiac disease, even if this small increase in tight junction width was enough to markedly increase the epithelial albumin permeability, the leak would still be limited by the relatively low normal albumin permeability of the gastric capillaries (Figure 7). It seems unlikely that the massive protein leaks seen in some cases of Menetrier’s (clearances of 300–600 mL/day) could be explained by this small increase in gap junction width. Kelly et al¹¹⁶ measured both gastric albumin clearance (continuous gastric aspiration after IV ⁵¹Cr-albumin) and gap junction width in seven Menetrier’s patients. The severity of the PLE as determined by serum albumin (C_p) was strongly correlated with the gastric albumin loss. For example, the patient with a C_p that was half normal had a huge gastric albumin clearance of 800 mL/day, while three patients with nearly normal C_p had only slightly increased albumin clearance. It is of interest that all the seven patients had the same increase in tight junction width, that is, this width was not correlated with the degree of gastric PLE, again suggesting that this may not be the leak mechanism. Also, Jarnum and Jensen¹¹⁰ found that IgG and albumin had similar rates of gastric clearance, which would not be expected for sieving through 10 nm tight junctions because IgG is about twice the size of albumin. Menetrier’s is characterized by a massive increase in mucus secretion and there may be some sort of coupling between secretion and albumin loss.

The only other disease in which gastric PLE has been implicated comes from the studies of Becheur et al¹¹⁷ in 26 patients with alcoholic cirrhosis. They measured gastric clearance of α AT using the method of Florent et al²² described above (continuous gastric aspiration with concomitant IV cimetidine to reduce α AT proteolysis). Although there was no significant difference from control for the group as a whole, three subjects had mildly elevated gastric clearances of 68, 98, and 157 mL/day. All three patients had severe hypoalbuminemia, less than half normal, which, as discussed above, would require total GI clearances of at least 240 mL/day if they had normal liver function. Thus, even in the subjects with the highest loss rate, the gastric GI loss is not large enough to explain the decreased serum albumin and some other factor, for example, decreased hepatic albumin synthesis, must also be present. The mechanism of this increased gastric

clearance is not clear. Presumably, the increased portal vein pressure in these cirrhotics leads to some pathologic break in the epithelial barrier.

Genetic and animal models of PLE

The most exciting area of investigation of PLE concerns the physiologic role of heparin and its possible therapeutic implications. Interest in heparin originated in 1997 with the report of Donnelly et al¹¹⁸ that IV heparin (10,000 units every 12 hours) dramatically reversed PLE in three patients post-Fontan procedure. Subsequent studies have not supported this observation. Although there have been scattered reports of the effectiveness of heparin in the treatment of PLE in Crohn’s disease and ulcerative colitis,^{119,120} there have been many negative studies.¹²¹ Nevertheless, interest in this area was rekindled in 2008 by the report of Bode et al¹²² of a series of in vitro and in vivo mouse studies that clearly demonstrate the importance of heparin and heparan sulfate proteoglycan in modifying intestinal permeability. They used ⁵¹Cr-albumin and α AT to measure in vivo protein loss, with both methods giving nearly identical results. Knockout of syndecan-1, the predominant heparan sulfate proteoglycan on the basolateral surface of intestinal epithelial cells, increased the rate of protein leak by a small (about 2-fold), but statistically significant, amount. Combining the knockout with inflammatory cytokines (e.g., tumor necrosis factor [TNF]- α and interferon- γ) and/or increased venous pressure produced a synergistically greater leak. (TNF- α in wild-type mice produced about a 3-fold increase in protein leak.) Daily injections of high-molecular weight heparin reversed most of this increased leak. As a possible human analog of this knockout, Murch et al¹²³ described three infants with massive congenital PLE who had a marked absence of heparan sulfate glycosaminoglycans on the enterocyte basolateral membrane. These results along with more recent results¹²⁴ showing the importance of syndecan-1 in regulating intestinal permeability demonstrate that defects in tight junctions can partially mimic the increased permeability seen in PLE diseases without mucosal erosions (e.g., celiac disease).

There are a number of other rare genetic diseases that manifest as severe diarrhea with PLE and hypoalbuminemia in infancy. Both microvillus inclusion disease¹²⁵ and congenital tufting enteropathy¹²⁶ have major defects in the enterocytes, unlike what is seen in noncongenital acquired PLE described above. In contrast, the epithelium has a relatively normal appearance in the PLE associated with the recently described DGAT1 mutation that disrupts an intestinal epithelial luminal membrane transferase protein involved

in triglyceride absorption.¹²⁷ The epithelium is completely normal in the PLE resulting from the “plasmalemma vesicle associated protein” mutation that produces a massive breakdown in the fenestrations in epithelial capillaries, preventing normal water absorption.¹²⁸ None of these genetic diseases seem to be useful models of the pathology involved in the usual clinical forms of PLE.

More than 60 animal models of IBD have been described using a range of approaches, including chemical irritants, immune antigens, and genetic alterations.^{100,129} However, these models are not useful for the purposes of this review in that they focus on the factors involved in the induction of IBD with little attention directed to understanding the physiology of the PLE mechanisms associated with the inflammation.

Summary and discussion: clinical implications of PLE

As evidenced by the foregoing, PLE is a complex, relatively common entity that occurs in a variety of GI as well as non-GI conditions. Thus, it is surprising that many, if not most, practicing physicians are unaware of PLE, and many who are familiar with the existence of this problem are not aware that it can be relatively easily diagnosed and quantified via α AT clearance measurements. This lack of awareness presumably reflects the fact that PLE is not a disease, but rather a phenomenon that “silently” complicates a variety of diseases. Treatment is almost always directed at correction of the underlying condition. Only very rarely, such as in some intestinal lymphangiectasis or post-Fontan procedures, is treatment specifically directed towards reducing the PLE.

Given the lack of general awareness of PLE, it is worthwhile to review the accepted and potential clinical value of measurements of protein loss into the gut lumen. Since PLE has been reported to occur in 60 different conditions, the finding of PLE usually does not aid in the diagnosis of any given disease. A potential diagnostic usage of PLE measurements might be as a screening tool to differentiate irritable bowel syndrome (IBS) from all other maladies of the GI tract, with excessive loss of protein excluding IBS. However, while it is commonly assumed that intestinal protein permeability is normal in IBS, there have not been any systematic measurements of PLE in IBS. Increased permeability to small molecules (i.e., lactulose) has been described in IBS¹³⁰ and, since PLE occurs in diseases with anatomically normal-appearing mucosa, it is not a foregone conclusion that IBS patients do not have PLE.

Suspicion of the existence of PLE is usually prompted by the finding of marked hypoalbuminemia not attributable to liver disease. As discussed, relatively enormous elevations

of the normal gut protein loss are required if PLE is to be deemed the sole source of very low albumin levels. For example, to account for a 50% reduction of normal serum albumin if all other aspects of albumin kinetics remain normal, there needs to be an increase in the GI clearance equal to the normal total clearance, corresponding to a total GI protein loss of about 5.61 g/day (refer Equation 5). This would require a gut clearance of albumin of about 255 mL/day, roughly 17 times the normal mean intestinal albumin clearance of 15 mL/day. As discussed, if the normal albumin homeostatic mechanisms come into play, even greater gut clearances would be required (Figure 2). The quantitative relationship between serum albumin and PLE has been investigated in two papers. Waldmann et al¹⁵ found that PLE (assessed by fecal excretion of ⁵¹Cr-albumin) almost perfectly accounted for the hypoalbuminemia observed in patients with not very well-delineated disease states. The only other large screening study of PLE is the α AT clearance measurements of Strygler et al²⁰ in 87 patients selected for evaluation of “chronic idiopathic diarrhea, malabsorption, or hypoalbuminemia of unknown origin”. If, as discussed previously, the true GI albumin clearance (Cl_{GI}) was twice the α AT clearance, PLE Cl_{GI} could also account for most of the observed hypoalbuminemia in the Strygler et al²⁰ subjects, although the correlation was not as strong as Waldmann et al¹⁵ found using ⁵¹Cr. The finding that gut losses could roughly account for the low serum albumin of the subjects in these two studies raises the question as to how often unrecognized gut protein losses, subtle to massive, are responsible for reductions in serum albumin observed in patients with a variety of diseases that seemingly do not involve the bowel. For example, two likely candidates of common pathologies that might have associated PLE are chronic heart failure and cirrhosis. However, as discussed above, although PLE has been reported with these two diseases, it is a rare and unusual occurrence.

A number of studies have assessed PLE in inflammatory bowel disease (IBD), primarily Crohn’s disease. While very sizable PLE has been noted with both ⁵¹Cr-albumin and α AT measurements, there is a surprising lack of correlation between protein loss and disease activity with PLE often observed in inactive disease.^{19,131} In addition, PLE measurements had only limited success in predicting relapse of quiescent disease.¹³² Thus, it appears that α AT excretion offers no advantages over the much simpler measurements of disease activity presently in use, such as the C-reactive protein and the erythrocyte sedimentation rate.

One aspect of PLE in Crohn’s disease that merits study is the possibility that the magnitude of PLE influences the efficacy of therapy with anti-TNF globulins. The serum

half-time of the anti-TNF agents is reduced in severe Crohn's disease and this reduction in half-time correlates with low serum albumin levels.¹³³ In addition, PLE in very active Crohn's is sufficient to materially alter the normal 7–10-day half-time of infliximab. As discussed above, there is very little size selectivity in PLE, with albumin and IgG having similar leak rates. Thus, it seems possible or even likely that gut loss plays a major role in the more rapid turnover of anti-TNF globulins observed in severe Crohn's disease. Brandse et al¹³⁴ measured infliximab concentrations in the feces of patients with ulcerative colitis. While frequently detectable immediately after the infusion, infliximab concentrations were neither quantitatively sufficient to account for a reduced half-time of this compound nor was there a significant correlation between the fecal concentration and the observed half-time. These findings do not rule out an appreciable role of PLE in infliximab turnover since this compound could be rapidly and variably destroyed in the fecal stream. Also, the measurement of fecal concentration, rather than daily excretion, might have obscured meaningful correlations between gut loss and serum half-times. Study of the relationship between α AT clearance and infliximab turnover would provide more reliable, albeit indirect, information on the relationship between PLE and infliximab loss into the gut. The finding of a significant correlation between PLE and infliximab concentrations could be used as the basis for greater or more frequent dosing with anti-TNF agents in patients with high α AT clearances.

Finally, there is an unexplained strong correlation between mortality of apparently healthy subjects and their serum albumin concentrations, even when the serum albumin is well within the accepted normal range (>3.5 g/L).² This observation raises the totally unexplored questions of whether PLE could account for this relative hypoalbuminemia and, if so, could the mechanism responsible for PLE play a role in the increased mortality. For example, the above described increase in PLE observed with TNF- α administration¹²² in experimental animals suggests that the release of inflammatory cytokines could provide a potential link between PLE and increased mortality of seemingly healthy subjects. The increases in PLE required to produce the modest hypoalbuminemia associated with the increased mortality are predicted by Equations 4–6 and plotted in Figure 2. For example, gut albumin clearance would have to increase from about the normal value of 15 mL/day to at least 40 mL/day (Equation 5) to account for a serum albumin decline from 4.5 to 4.1 g/dL. Several studies of PLE in groups of “normal” controls found that there were outliers who might have this level of PLE,^{17,20,131} particularly if α AT clearance is only half the true

clearance as a result of the intestinal proteolysis discussed above. Although no such study is likely to be performed, the “dream” study would compare the serum albumin concentrations of healthy subjects with their fecal α AT clearance obtained following administration of high-dose protein pump inhibitor and polyethylene glycol to minimize gastric and intestinal destruction of antitrypsin, respectively. Such a study would provide the first, presumably, accurate assessment of the true intestinal α AT clearance in “healthy” individuals and its possible correlation with variations in serum albumin.

Disclosure

The authors report no conflicts of interest in this work.

References

- Greenwald DA. Protein-losing gastroenteropathy. In: Feldman M, Friedman LS, Brandt LJ, editors. *Sleisenger and Fordtran's Gastrointestinal and Liver Disease*. Vol 1. 10th ed. Philadelphia, PA: Saunders; 2016:464–470.
- Levitt DG, Levitt MD. Human serum albumin homeostasis: a new look at the roles of synthesis, catabolism, renal and gastrointestinal excretion, and the clinical value of serum albumin measurements. *Int J Gen Med*. 2016;9:229–255.
- Fulks M, Stout RL, Dolan VF. Albumin and all-cause mortality risk in insurance applicants. *J Insur Med*. 2010;42(1):11–17.
- Schomerus H, Mayer G. Synthesis rates of albumin and fibrinogen in patients with protein-losing enteropathy and in a patient recovering from protein malnutrition. *Digestion*. 1975;13(4):201–208.
- Waldmann TA, Steinfeld JL, Dutcher TF, Davidson JD, Gordon RS Jr. The role of the gastrointestinal system in “idiopathic hypoproteinemia”. *Gastroenterology*. 1961;41:197–207.
- Wochner RD, Weissman SM, Waldmann TA, Houston D, Berlin NI. Direct measurement of the rates of synthesis of plasma proteins in control subjects and patients with gastrointestinal protein loss. *J Clin Invest*. 1968;47(5):971–982.
- Andersen SB, Rossing N. Metabolism of albumin and gamma-globulin during albumin infusions and during plasmapheresis. *Scand J Clin Lab Invest*. 1967;20(2):183–184.
- Bennhold H, Kallee E. Comparative studies on the half-life of I 131-labeled albumins and nonradioactive human serum albumin in a case of analbuminemia. *J Clin Invest*. 1959;38(5):863–872.
- Freeman T, Gordon AH. Albumin catabolism in hypoproteinaemic states studies with I31-I-albumin. *Bibl Haematol*. 1965;23:1108–1115.
- Roopenian DC, Low BE, Christianson GJ, Proetzel G, Sproule TJ, Wiles MV. Albumin-deficient mouse models for studying metabolism of human albumin and pharmacokinetics of albumin-based drugs. *MAbs*. 2015;7(2):344–351.
- Steinfeld JL, Davidson JD, Gordon RS Jr, Greene FE. The mechanism of hypoproteinemia in patients with regional enteritis and ulcerative colitis. *Am J Med*. 1960;29:405–415.
- van Tongeren JH, Majoor CL. Demonstration of protein-losing gastroenteropathy. The disappearance rate of 51Cr from plasma and the binding of 51Cr to different serum proteins. *Clin Chim Acta*. 1966;14(1):31–41.
- Waldmann TA. Gastrointestinal protein loss demonstrated by Cr-51-labeled albumin. *Lancet*. 1961;2(7194):121–123.
- Kerr RM, Du Bois JJ, Holt PR. Use of I25-I- and 51-Cr-labeled albumin for the measurement of gastrointestinal and total albumin catabolism. *J Clin Invest*. 1967;46(12):2064–2082.
- Waldmann TA, Wochner RD, Strober W. The role of the gastrointestinal tract in plasma protein metabolism. Studies with 51Cr-albumin. *Am J Med*. 1969;46(2):275–285.

16. Bernier JJ, Florent C, Desmazes C, Aymes C, L'Hirondel C. Diagnosis of protein-losing enteropathy by gastrointestinal clearance of alpha-1-antitrypsin. *Lancet*. 1978;2(8093):763–764.
17. Quigley EM, Ross IN, Haeney MR, Holbrook IB, Marsh MN. Reassessment of fecal alpha-1-antitrypsin excretion for use as screening test for intestinal protein loss. *J Clin Pathol*. 1987;40(1):61–66.
18. Bai JC, Sambuelli A, Niveloni S, et al. Alpha 1-antitrypsin clearance as an aid in the management of patients with celiac disease. *Am J Gastroenterol*. 1991;86(8):986–991.
19. Karbach U, Ewe K, Bodenstern H. Alpha 1-antitrypsin, a reliable endogenous marker for intestinal protein loss and its application in patients with Crohn's disease. *Gut*. 1983;24(8):718–723.
20. Strygler B, Nicarr MJ, Santangelo WC, Porter JL, Fordtran JS. Alpha 1-antitrypsin excretion in stool in normal subjects and in patients with gastrointestinal disorders. *Gastroenterology*. 1990;99(5):1380–1387.
21. Florent C, L'Hirondel C, Desmazes C, Aymes C, Bernier JJ. Intestinal clearance of alpha 1-antitrypsin. A sensitive method for the detection of protein-losing enteropathy. *Gastroenterology*. 1981;81(4):777–780.
22. Florent C, Vidon N, Flourie B, et al. Gastric clearance of alpha-1-antitrypsin under cimetidine perfusion. New test to detect protein-losing gastropathy? *Dig Dis Sci*. 1986;31(1):12–15.
23. Chau TN, Mok MY, Chan EY, et al. Evaluation of performance of measurement of fecal alpha(1)-antitrypsin clearance and technetium-99m human serum albumin scintigraphy in protein-losing enteropathy. *Digestion*. 2011;84(3):199–206.
24. Khalesi M, Nakhaei AA, Seyed AJ, et al. Diagnostic accuracy of nuclear medicine imaging in protein losing enteropathy: systematic review and meta-analysis of the literature. *Acta Gastroenterol Belg*. 2013;76(4):413–422.
25. Wilson JP. Surface area of the small intestine in man. *Gut*. 1967;8(6):618–621.
26. Watson AJ, Chu S, Sieck L, et al. Epithelial barrier function in vivo is sustained despite gaps in epithelial layers. *Gastroenterology*. 2005;129(3):902–912.
27. Ravin HA, Seligman AM, Fine J. Polyvinyl pyrrolidone as a plasma expander; studies on its excretion, distribution and metabolism. *N Engl J Med*. 1952;247(24):921–929.
28. Keulemans YC, Mok KS, de Wit LT, Gouma DJ, Groen AK. Hepatic bile versus gallbladder bile: a comparison of protein and lipid concentration and composition in cholesterol gallstone patients. *Hepatology*. 1998;28(1):11–16.
29. Mullock BM, Shaw LJ, Fitzharris B, et al. Sources of proteins in human bile. *Gut*. 1985;26(5):500–509.
30. Boyer JL, Bloomer JR. Canalicular bile secretion in man. Studies utilizing the biliary clearance of (14C)mannitol. *J Clin Invest*. 1974;54(4):773–781.
31. Multigner L, Figarella C, Sahel J, Sarles H. Lactoferrin and albumin in human pancreatic juice: a valuable test for diagnosis of pancreatic diseases. *Dig Dis Sci*. 1980;25(3):173–178.
32. Hayakawa T, Harada H, Noda A, Kondo T. Lactoferrin in pure pancreatic juice in chronic pancreatitis. *Am J Gastroenterol*. 1983;78(4):222–224.
33. Vignes S, Bellanger J. Primary intestinal lymphangiectasia (Waldmann's disease). *Orphanet J Rare Dis*. 2008;3:5.
34. Takenaka H, Ohmiya N, Hirooka Y, et al. Endoscopic and imaging findings in protein-losing enteropathy. *J Clin Gastroenterol*. 2012;46(7):575–580.
35. Aoyagi K, Iida M, Yao T, Matsui T, Okada M, Fujishima M. Intestinal lymphangiectasia: value of double-contrast radiographic study. *Clin Radiol*. 1994;49(11):814–819.
36. Salomons HA, Kramer P, Nikulasson S, Schroy PC. Endoscopic features of long-standing primary intestinal lymphangiectasia. *Gastrointest Endosc*. 1995;41(5):516–518.
37. Stoeltinga GB, van MJ, Slooff JP. Chylous effusions into the intestine in a patient with protein-losing gastroenteropathy. *Pediatrics*. 1963;31:1011–1018.
38. Mistilis SP, Skyring AP, Stephen DD. Intestinal Lymphangiectasia Mechanism of Enteric Loss of Plasma-Protein and Fat. *Lancet*. 1965;1(7376):77–79.
39. So Y, Chung JK, Seo JK, et al. Different patterns of lymphoscintigraphic findings in patients with intestinal lymphangiectasia. *Nucl Med Commun*. 2001;22(11):1249–1254.
40. Soucy JP, Eybalin MC, Taillefer R, Levasseur A, Jobin G. Lymphoscintigraphic demonstration of intestinal lymphangiectasia. *Clin Nucl Med*. 1983;8(11):535–537.
41. Gold RH, Youker JE. Idiopathic intestinal lymphangiectasis (primary protein-losing enteropathy). Lymphographic verification of enteric and peritoneal leakage of chyle. *Radiology*. 1973;109(2):351–352.
42. Desai AP, Guvenc BH, Carachi R, et al. Protein-losing enteropathy in the treatment of primary intestinal lymphangiectasia. *Eur J Pediatr Surg*. 2009;19(4):241–245.
43. Lai Y, Yu T, Qiao XY, Zhao LN, Chen QK. Primary intestinal lymphangiectasia diagnosed by double-balloon enteroscopy and treated by medium-chain triglycerides: a case report. *J Med Case Rep*. 2013;7:19.
44. Meijers BK, Schalla S, Eerens F, et al. Protein-losing enteropathy in association with constrictive pericarditis. *Int J Cardiovasc Imaging*. 2006;22(3–4):389–392.
45. Nelson DL, Blaese RM, Strober W, Bruce R, Waldmann TA. Constrictive pericarditis, intestinal lymphangiectasia, and reversible immunologic deficiency. *J Pediatr*. 1975;86(4):548–554.
46. Petersen VP, Hastrup J. Protein-losing enteropathy in constrictive pericarditis. *Acta Med Scand*. 1963;173:401–410.
47. Wilkinson P, Pinto B, Senior JR. Reversible protein-losing enteropathy with intestinal lymphangiectasia secondary to chronic constrictive pericarditis. *N Engl J Med*. 1965;273(22):1178–1181.
48. Johnson JN, Driscoll DJ, O'Leary PW. Protein-losing enteropathy and the Fontan operation. *Nutr Clin Pract*. 2012;27(3):375–384.
49. Schumacher KR, Stringer KA, Donohue JE, et al. Social media methods for studying rare diseases. *Pediatrics*. 2014;133(5):e1345–e1353.
50. John AS, Johnson JA, Khan M, Driscoll DJ, Warnes CA, Cetta F. Clinical outcomes and improved survival in patients with protein-losing enteropathy after the Fontan operation. *J Am Coll Cardiol*. 2014;64(1):54–62.
51. Mertens L, Hagler DJ, Sauer U, Somerville J, Gewillig M. Protein-losing enteropathy after the Fontan operation: an international multicenter study. PLE study group. *J Thorac Cardiovasc Surg*. 1998;115(5):1063–1073.
52. Rychik J. Protein-losing enteropathy after Fontan operation. *Congenit Heart Dis*. 2007;2(5):288–300.
53. Magdo HS, Stillwell TL, Greenhawt MJ, et al. Immune abnormalities in Fontan protein-losing enteropathy: a case-control study. *J Pediatr*. 2015;167(2):331–337.
54. Meadows J, Jenkins K. Protein-losing enteropathy: integrating a new disease paradigm into recommendations for prevention and treatment. *Cardiol Young*. 2011;21(4):363–377.
55. Antonio M, Gordo A, Pereira C, Pinto F, Fragata I, Fragata J. Thoracic duct decompression for protein-losing enteropathy in failing Fontan circulation. *Ann Thorac Surg*. 2016;101(6):2370–2373.
56. Connor FL, Angelides S, Gibson M, et al. Successful resection of localized intestinal lymphangiectasia post-Fontan: role of (99m)technetium-dextran scintigraphy. *Pediatrics*. 2003;112(3 Pt 1):e242–e247.
57. Lin WS, Hwang MS, Chung HT, et al. Protein-losing enteropathy after the Fontan operation: clinical analysis of nine cases. *Chang Gung Med J*. 2006;29(5):505–512.
58. Ohuchi H, Yasuda K, Miyazaki A, et al. Hemodynamic characteristics before and after the onset of protein losing enteropathy in patients after the Fontan operation. *Eur J Cardiothorac Surg*. 2013;43(3):e49–e57.
59. Lenz D, Hamsch J, Schneider P, et al. Protein-losing enteropathy in patients with Fontan circulation: is it triggered by infection? *Crit Care*. 2003;7(2):185–190.
60. Ryerson L, Goldberg C, Rosenthal A, Armstrong A. Usefulness of heparin therapy in protein-losing enteropathy associated with single ventricle palliation. *Am J Cardiol*. 2008;101(2):248–251.
61. Davis CA, Driscoll DJ, Perrault J, et al. Enteric protein loss after the Fontan operation. *Mayo Clin Proc*. 1994;69(2):112–114.

62. Fujii T, Shimizu T, Takahashi K, et al. Fecal alpha-1-antitrypsin concentrations as a measure of enteric protein loss after modified Fontan operations. *J Pediatr Gastroenterol Nutr.* 2003;37(5):577–580.
63. Thorne SA, Hooper J, Kemp M, Somerville J. Gastro-intestinal protein loss in late survivors of Fontan surgery and other congenital heart disease. *Eur Heart J.* 1998;19(3):514–520.
64. Ostrow AM, Freeze H, Rychik J. Protein-losing enteropathy after Fontan operation: investigations into possible pathophysiologic mechanisms. *Ann Thorac Surg.* 2006;82(2):695–700.
65. Chan FK, Sung JJ, Ma KM, Leung YL, Yeung VT. Protein-losing enteropathy in congestive heart failure: diagnosis by means of a simple method. *Hepatogastroenterology.* 1999;46(27):1816–1818.
66. Berkowitz I, Segal I. Protein-losing enteropathy in congestive cardiac failure: an entity of minor clinical significance. *Am J Gastroenterol.* 1990;85(2):154–156.
67. Dumont AE, Mulholland JH. Alterations in thoracic duct lymph flow in hepatic cirrhosis: significance in portal hypertension. *Ann Surg.* 1962;156(4):668–675.
68. Stanley AJ, Gilmour HM, Ghosh S, Ferguson A, McGilchrist AJ. Transjugular intrahepatic portosystemic shunt as a treatment for protein-losing enteropathy caused by portal hypertension. *Gastroenterology.* 1996;111(6):1679–1682.
69. Wong WM, Hui CK, Yuen MF, et al. Reversal of protein-losing enteropathy by liver transplantation. *J Clin Gastroenterol.* 2003;36(1):86–87.
70. Georgopoulos P, Mowat C, McMillan DC, Kingstone K, Ghosh S, Stanley AJ. Is portal hypertension associated with protein-losing enteropathy? *J Gastroenterol Hepatol.* 2005;20(1):103–107.
71. Davcev P, Vanovski B, Sestakov D, Tadzer I. Protein-losing enteropathy in patients with liver cirrhosis. *Digestion.* 1969;2(1):17–22.
72. Fuss IJ, Strober W, Cuccherini BA, et al. Intestinal lymphangiectasia, a disease characterized by selective loss of naive CD45RA + lymphocytes into the gastrointestinal tract. *Eur J Immunol.* 1998;28(12):4275–4285.
73. Muller C, Wolf H, Gottlicher J, Zielinski CC, Eibl MM. Cellular immunodeficiency in protein-losing enteropathy. Predominant reduction of CD3+ and CD4+ lymphocytes. *Dig Dis Sci.* 1991;36(1):116–122.
74. Bendixen G, Jarnum S, Soltoft J, Westergaard H, Weeke B, Yssing M. IgG and albumin turnover in Crohn's disease. *Scand J Gastroenterol.* 1968;3(5):481–489.
75. Beh KJ, Watson DL, Lascelles AK. Concentrations of immunoglobulins and albumin in lymph collected from various regions of the body of the sheep. *Aust J Exp Biol Med Sci.* 1974;52(1):81–86.
76. Vaerman JP, Heremans JF. Origin and molecular size of immunoglobulin-A in the mesenteric lymph of the dog. *Immunology.* 1970;18(1):27–38.
77. Sands BE, Siegel CA. Crohn's Disease. In: Feldman M, Friedman AN, Brandt LJ, editors. *Sleisenger and Fordtran's Gastrointestinal and Liver Disease.* Vol 2. 10th ed. Saunders; 2016:1990–2022.
78. Dubcenco E, Jeejeebhoy KN, Petroniene R, et al. Capsule endoscopy findings in patients with established and suspected small-bowel Crohn's disease: correlation with radiologic, endoscopic, and histologic findings. *Gastrointest Endosc.* 2005;62(4):538–544.
79. Courtice FC, Simmonds WJ, Steinbeck AW. Some investigations of lymph from a thoracic duct fistula in man. *Aust J Exp Biol Med Sci.* 1951;29:201–210.
80. Fanous MY, Phillips AJ, Windsor JA. Mesenteric lymph: the bridge to future management of critical illness. *JOP.* 2007;8(4):374–399.
81. Bill A. Plasma protein dynamics: albumin and IgG capillary permeability, extravascular movement and regional blood flow in unanesthetized rabbits. *Acta Physiol Scand.* 1977;101(1):28–42.
82. Kingham JG, Loehry CA. Selectivity of small intestinal exudate in celiac disease and Crohn's disease. *Am J Dig Dis.* 1978;23(1):33–38.
83. Olaison G, Leandersson P, Sjodahl R, Tagesson C. Intestinal permeability to polyethyleneglycol 600 in Crohn's disease. Peroperative determination in a defined segment of the small intestine. *Gut.* 1988;29(2):196–199.
84. Ainsworth M, Eriksen J, Rasmussen JW, Schaffalitzky de Muckadell OB. Intestinal permeability of 51Cr-labeled ethylenediaminetetraacetic acid in patients with Crohn's disease and their healthy relatives. *Scand J Gastroenterol.* 1989;24(8):993–998.
85. Miki K, Moore DJ, Butler RN, Southcott E, Couper RT, Davidson GP. The sugar permeability test reflects disease activity in children and adolescents with inflammatory bowel disease. *J Pediatr.* 1998;133(6):750–754.
86. Murphy MS, Eastham EJ, Nelson R, Pearson AD, Laker MF. Intestinal permeability in Crohn's disease. *Arch Dis Child.* 1989;64(3):321–325.
87. Alexander JS, Chaitanya GV, Grisham MB, Boktor M. Emerging roles of lymphatics in inflammatory bowel disease. *Ann NY Acad Sci.* 2010;1207(Suppl 1):E75–E85.
88. Van Kruiningen HJ, Colombel JF. The forgotten role of lymphangitis in Crohn's disease. *Gut.* 2008;57(1):1–4.
89. von der Weid PY, Rehal S, Ferraz JG. Role of the lymphatic system in the pathogenesis of Crohn's disease. *Curr Opin Gastroenterol.* 2011;27(4):335–341.
90. Garcia de Tena J, Manzano L, Leal JC, San Antonio E, Sualdea V, Alvarez-Mon M. Active Crohn's disease patients show a distinctive expansion of circulating memory CD4+ CD45RO + CD28null T cells. *J Clin Immunol.* 2004;24(2):185–196.
91. Kelly CP. Celiac Disease. In: Feldman M, Friedman LS, Brandt LJ, editors. *Sleisenger and Fordtran's Gastrointestinal and Liver Disease.* Vol. 2. Philadelphia, PA: Saunders; 2016:1849–1872.
92. Stenhammar L, Falth-Magnusson K, Jansson G, Magnusson KE, Sundqvist T. Intestinal permeability to inert sugars and different-sized polyethyleneglycols in children with celiac disease. *J Pediatr Gastroenterol Nutr.* 1989;9(3):281–289.
93. Laster L, Waldmann TA, Fenster LF, Singleton JW. Albumin metabolism in patients with Whipple's disease. *J Clin Invest.* 1966;45(5):637–644.
94. Maiwald M, Herbay AV. Whipple's Disease. In: Feldman M, Friedman LS, Brandt LJ, editors. *Sleisenger and Fordtran's Gastrointestinal and Liver Disease.* Vol. 2. 10th ed. Philadelphia, PA: Saunders; 2016:1886–1895.
95. Benner KG, Montanaro A. Protein-losing enteropathy in systemic lupus erythematosus. Diagnosis and monitoring immunosuppressive therapy by alpha-1-antitrypsin clearance in stool. *Dig Dis Sci.* 1989;34(1):132–135.
96. Zheng WJ, Tian XP, Li L, et al. Protein-losing enteropathy in systemic lupus erythematosus: analysis of the clinical features of fifteen patients. *J Clin Rheumatol.* 2007;13(6):313–316.
97. Moos V, Schmidt C, Geelhaar A, et al. Impaired immune functions of monocytes and macrophages in Whipple's disease. *Gastroenterology.* 2010;138(1):210–220.
98. Marth T, Roux M, von Herbay A, Meuer SC, Feurle GE. Persistent reduction of complement receptor 3 alpha-chain expressing mononuclear blood cells and transient inhibitory serum factors in Whipple's disease. *Clin Immunol Immunopathol.* 1994;72(2):217–226.
99. Habibagahi M, Habibagahi Z, Jaberipour M, Aghdashi A. Quantification of regulatory T cells in peripheral blood of patients with systemic lupus erythematosus. *Rheumatol Int.* 2011;31(9):1219–1225.
100. Clayburgh DR, Shen L, Turner JR. A porous defense: the leaky epithelial barrier in intestinal disease. *Lab Invest.* 2004;84(3):282–291.
101. Schulzke JD, Bentzel CJ, Schulzke I, Riecken EO, Fromm M. Epithelial tight junction structure in the jejunum of children with acute and treated celiac sprue. *Pediatr Res.* 1998;43(4 Pt 1):435–441.
102. Madara JL, Trier JS. Structural abnormalities of jejunal epithelial cell membranes in celiac sprue. *Lab Invest.* 1980;43(3):254–261.
103. Citrin Y, Sterling K, Halsted JA. The mechanism of hypoproteinemia associated with giant hypertrophy of the gastric mucosa. *N Engl J Med.* 1957;257(19):906–912.
104. Azer M, Sultan A, Zalata K, Abd El-Haleem I, Hassan A, El-Ebeidy G. A case of Menetrier's disease without *Helicobacter pylori* or hypoalbuminemia. *Int J Surg Case Rep.* 2015;17:58–60.
105. Meuwissen SG, Ridwan BU, Hasper HJ, Innemee G. Hypertrophic protein-losing gastropathy. A retrospective analysis of 40 cases in The Netherlands. The Dutch Menetrier Study Group. *Scand J Gastroenterol Suppl.* 1992;194:1–7.

106. Xiong LS, Gong YY. Natural history of adult-onset Menetrier's disease: report of a case with 9-year follow-up. *Exp Ther Med*. 2016;11(6):2462–2466.
107. Burdick JS, Chung E, Tanner G, et al. Treatment of Menetrier's disease with a monoclonal antibody against the epidermal growth factor receptor. *N Engl J Med*. 2000;343(23):1697–1701.
108. Fiske WH, Tanksley J, Nam KT, et al. Efficacy of cetuximab in the treatment of Menetrier's disease. *Sci Transl Med*. 2009;1(8):8ra18.
109. Williamson K, Park HK, Schacht R, Kaistha A. A case of Menetrier disease in a child. *Pediatr Emerg Care*. 2012;28(3):277–279.
110. Jarnum S, Jensen KB. Plasma protein turnover (albumin, transferrin, IgG, IgM) in Menetrier's disease (giant hypertrophic gastritis): evidence of non-selective protein loss. *Gut*. 1972;13(2):128–137.
111. Reinhart WH, Weigand K, Kappeler M, Roesler H, Halter F. Comparison of gastrointestinal loss of alpha-1-antitrypsin and chromium-51-albumin in Menetrier's disease and the influence of ranitidine. *Digestion*. 1983;26(4):192–196.
112. Huh WJ, Coffey RJ, Washington MK. Menetrier's disease: its mimickers and pathogenesis. *J Pathol Transl Med*. 2016;50(1):10–16.
113. Takagi H, Jhappan C, Sharp R, Merlino G. Hypertrophic gastropathy resembling Menetrier's disease in transgenic mice overexpressing transforming growth factor alpha in the stomach. *J Clin Invest*. 1992;90(3):1161–1167.
114. Miura S, Asakura H, Tsuchiya M. Lymphatic abnormalities in protein-losing gastropathy, especially in Menetrier's disease. *Angiology*. 1981;32(5):345–354.
115. Oderda G, Cinti S, Cangiotti AM, Forni M, Ansaldi N. Increased tight junction width in two children with Menetrier's disease. *J Pediatr Gastroenterol Nutr*. 1990;11(1):123–127.
116. Kelly DG, Miller LJ, Malagelada JR, Huizenga KA, Markowitz H. Giant hypertrophic gastropathy (Menetrier's disease): pharmacologic effects on protein leakage and mucosal ultrastructure. *Gastroenterology*. 1982;83(3):581–589.
117. Becheur H, Pauwels A, Mostefa-Kara N, et al. [Gastric protein loss and alcoholic cirrhosis. Study by measurement of gastric clearance of alpha 1-antitrypsin]. *Gastroenterol Clin Biol*. 1996;20(8–9):669–673.
118. Donnelly JP, Rosenthal A, Castle VP, Holmes RD. Reversal of protein-losing enteropathy with heparin therapy in three patients with univentricular hearts and Fontan palliation. *J Pediatr*. 1997;130(3):474–478.
119. Ang YS, Mahmud N, White B, et al. Randomized comparison of unfractionated heparin with corticosteroids in severe active inflammatory bowel disease. *Aliment Pharmacol Ther*. 2000;14(8):1015–1022.
120. Folwaczny C, Wiebecke B, Loeschke K. Unfractionated heparin in the therapy of patients with highly active inflammatory bowel disease. *Am J Gastroenterol*. 1999;94(6):1551–1555.
121. Chande N, MacDonald JK, Wang JJ, McDonald JW. Unfractionated or low molecular weight heparin for induction of remission in ulcerative colitis: a Cochrane inflammatory bowel disease and functional bowel disorders systematic review of randomized trials. *Inflamm Bowel Dis*. 2011;17(9):1979–1986.
122. Bode L, Salvestrini C, Park PW, et al. Heparan sulfate and syndecan-1 are essential in maintaining murine and human intestinal epithelial barrier function. *J Clin Invest*. 2008;118(1):229–238.
123. Murch SH, Winyard PJ, Koletzko S, et al. Congenital enterocyte heparan sulphate deficiency with massive albumin loss, secretory diarrhea, and malnutrition. *Lancet*. 1996;347(9011):1299–1301.
124. Wang Z, Li R, Tan J, et al. Syndecan-1 acts in synergy with tight junction through stat3 signaling to maintain intestinal mucosal barrier and prevent bacterial translocation. *Inflamm Bowel Dis*. 2015;21(8):1894–1907.
125. Muller T, Hess MW, Schiefermeier N, et al. MYO5B mutations cause microvillus inclusion disease and disrupt epithelial cell polarity. *Nat Genet*. 2008;40(10):1163–1165.
126. Thoeni C, Amir A, Guo C, et al. A novel nonsense mutation in the EpCAM gene in a patient with congenital tufting enteropathy. *J Pediatr Gastroenterol Nutr*. 2014;58(1):18–21.
127. Stephen J, Vilboux T, Haberman Y, et al. Congenital protein losing enteropathy: an inborn error of lipid metabolism due to DGAT1 mutations. *Eur J Hum Genet*. 2016;24(9):1268–1273.
128. Elkadri A, Thoeni C, Deharvengt SJ, et al. Mutations in plasmalemma vesicle associated protein result in sieving protein-losing enteropathy characterized by hypoproteinemia, hypoalbuminemia, and hypertriglyceridemia. *Cell Mol Gastroenterol Hepatol*. 2015;1(4):381–394 e387.
129. Hoffmann JC, Pawlowski NN, Kuhl AA, Hohne W, Zeitz M. Animal models of inflammatory bowel disease: an overview. *Pathobiology*. 2002;70(3):121–130.
130. Matricon J, Meleine M, Gelot A, et al. Review article: Associations between immune activation, intestinal permeability and the irritable bowel syndrome. *Aliment Pharmacol Ther*. 2012;36(11–12):1009–1031.
131. Fischbach W, Becker W, Mossner J, Koch W, Reiners C. Fecal alpha-1-antitrypsin and excretion of 111 indium granulocytes in assessment of disease activity in chronic inflammatory bowel diseases. *Gut*. 1987;28(4):386–393.
132. Biancone L, Fantini M, Tosti C, Bozzi R, Vavassori P, Pallone F. Fecal alpha 1-antitrypsin clearance as a marker of clinical relapse in patients with Crohn's disease of the distal ileum. *Eur J Gastroenterol Hepatol*. 2003;15(3):261–266.
133. Klotz U, Teml A, Schwab M. Clinical pharmacokinetics and use of infliximab. *Clin Pharmacokinet*. 2007;46(8):645–660.
134. Brandse JF, van den Brink GR, Wildenberg ME, et al. Loss of infliximab into feces is associated with lack of response to therapy in patients with severe ulcerative colitis. *Gastroenterology*. 2015;149(2):350–355 e352.

Clinical and Experimental Gastroenterology

Publish your work in this journal

Clinical and Experimental Gastroenterology is an international, peer-reviewed, open access, online journal publishing original research, reports, editorials, reviews and commentaries on all aspects of gastroenterology in the clinic and laboratory. This journal is included on PubMed. The manuscript management system is completely online

Submit your manuscript here: <https://www.dovepress.com/clinical-and-experimental-gastroenterology-journal>

Dovepress

and includes a very quick and fair peer-review system, which is all easy to use. Visit <http://www.dovepress.com/testimonials.php> to read real quotes from published authors.