

S100A16, a promising candidate as a prognostic marker for platinum-based adjuvant chemotherapy in resected lung adenocarcinoma

Ken Katono¹
 Yuichi Sato²
 Makoto Kobayashi³
 Ryo Nagashio²
 Shinichiro Ryuge¹
 Satoshi Igawa¹
 Masaaki Ichinoe⁴
 Yoshiki Murakumo⁴
 Makoto Saegusa⁴
 Noriyuki Masuda¹

¹Department of Respiratory Medicine, School of Medicine, ²Department of Molecular Diagnostics, School of Allied Health Sciences, ³Department of Applied Tumor Pathology, Graduate School of Medical Sciences, ⁴Department of Pathology, School of Medicine, Kitasato University, Minami-ku, Sagami-hara, Kanagawa, Japan

Correspondence: Yuichi Sato
 Department of Molecular Diagnostics,
 School of Allied Health Sciences, Kitasato
 University, 1-15-1 Kitasato, Minami-ku,
 Sagami-hara, Kanagawa 252-0373, Japan
 Tel/fax +81 42 778 8013
 Email yuichi@med.kitasato-u.ac.jp

Purpose: Although cisplatin-based adjuvant chemotherapy improves the survival of patients with resected non-small-cell lung cancer, not all patients show a survival benefit, and some patients experience severe toxicity. Therefore, identifying biomarkers is important for selecting subgroups of patients who may show improved survival with platinum-based adjuvant chemotherapy. S100A16 is thought to play key roles during different steps of tumor progression. The aim of this study was to evaluate the use of S100A16 expression as a prognostic marker in patients with completely resected lung adenocarcinoma receiving platinum-based adjuvant chemotherapy.

Methods: S100A16 expression was immunohistochemically studied in 65 consecutive lung adenocarcinoma patients who underwent complete resection and received platinum-based adjuvant chemotherapy. Kaplan–Meier survival analysis and Cox proportional hazards models were used to estimate the effect of S100A16 expression on disease-free survival (DFS) and overall survival (OS).

Results: S100A16 expression was detected in 26 of the 65 (40.0%) lung adenocarcinoma patients. Although S100A16 expression was not correlated with DFS ($P=0.062$), it was significantly correlated with OS ($P=0.009$). In addition, multivariable analysis revealed that S100A16 expression independently predicted a poorer survival (HR =4.79; 95% CI =1.87–12.23; $P=0.001$).

Conclusion: The present study revealed that S100A16 is a promising candidate as a prognostic marker for platinum-based adjuvant chemotherapy in resected lung adenocarcinoma. A further large-scale study is needed to confirm the present results.

Keywords: S100A16, lung adenocarcinoma, platinum-based adjuvant chemotherapy, immunohistochemistry, prognostic marker

Introduction

Non-small-cell lung cancer (NSCLC) is the leading cause of cancer-related mortality worldwide, and lung adenocarcinoma is the most common histological type of NSCLC.^{1,2} Despite advances in surgical techniques, the 5-year survival rate for patients with surgically resectable NSCLC has only slightly improved over the last few decades.³

Recently, several randomized controlled trials such as the International Adjuvant Lung Cancer Trial,⁴ the National Cancer Institute of Canada Clinical Trials Group JBR.10,⁵ and the Adjuvant Navelbine International Trialist Association⁶ have indicated that cisplatin-based adjuvant chemotherapy significantly improves the survival of patients with resected NSCLC. However, not all patients show a survival benefit, and some patients experience severe toxicity. Therefore, identifying biomarkers is important

for selecting subgroups of patients who may show improved survival with platinum-based adjuvant chemotherapy.

The S100 protein family comprises calcium-binding protein with the EF-hand motif that consists of at least 25 distinct members, and it plays roles including intracellular and extracellular functions involved in the cell cycle, growth, migration, and protein phosphorylation.^{7,8} Recently, the S100 protein family was implicated in multiple stages of tumor progression such as cell proliferation, migration, invasion, and apoptosis. Moreover, the expression of the S100 protein family is detected in many human cancers, and it has been reported to be correlated with a poorer prognosis.⁹ S100A16 was recently identified as a new member of the S100 protein family,¹⁰ and S100A16 expression is upregulated in tumors of the bladder, lung, thyroid gland, pancreas, and ovary.¹¹ Our previous study indicated that S100A16 expression is correlated with vessel invasion and a poor prognosis in patients with completely resected lung adenocarcinoma. In addition, S100A16 expression is an independent prognostic marker in patients with resected lung adenocarcinoma.¹² However, it is unclear whether S100A16 contributes to the chemoresistance of cancer cells, and no report is available concerning the significance of S100A16 expression and efficacy of systemic chemotherapy. Recently, epithelial–mesenchymal transition (EMT) was reported to be correlated with more aggressive tumor behavior and the chemoresistance of malignant tumors.¹³ Zhou et al reported that S100A16 promotes EMT through the Notch1 signaling pathway in breast cancer.¹⁴ Therefore, the aims of the present study were to immunohistochemically examine S100A16 expression in tumor cells of lung adenocarcinoma patients and to estimate the prognostic impact of S100A16 expression on the survival of resected lung adenocarcinoma patients receiving platinum-based adjuvant chemotherapy. Furthermore, we performed immunohistochemical staining of the EMT-related markers E-cadherin and vimentin to explore the correlation between S100A16 and EMT in lung adenocarcinomas.

Methods

Patients and tissue specimens

A total of 65 consecutive lung adenocarcinoma patients with pathological stages IIA through IIIA who underwent complete resection and received platinum-based adjuvant chemotherapy between January 2002 and December 2012 at Kitasato University Hospital participated in this retrospective study. None of the patients had received preoperative chemotherapy and/or radiotherapy. The histological diagnosis was based on the criteria of the World Health

Organization/International Association for the Study of Lung Cancer.¹⁵ The postoperative pathological stage was determined according to the 7th edition of the TNM classification.¹⁶ Clinical and pathological parameters including the age at surgical resection, sex, smoking habits, pathological TNM (p-TNM) stage, surgical procedures, adjuvant chemotherapy regimen and cycles, viability status, disease-free survival (DFS), and overall survival (OS) were extracted from the medical records. DFS was defined as the time from resection to first recurrence or death by any cause. OS was defined as the time from resection to death by any cause. The study was approved by the Ethics Committee of Kitasato University School of Medicine (KMEO B15-149). Written informed consent was obtained from all the patients.

Immunohistochemical staining

In immunohistochemical staining, 10% formalin-fixed and paraffin-embedded tissues were processed into 3- μ m-thick sections. The sections were reacted with 1,000-times-diluted anti-S100A16 polyclonal antibody (Abcam, Cambridge, UK) for 2 hours, anti-vimentin antibody (clone V9; DAKO, Glostrup, Denmark) for 2 hours, and 200-times-diluted anti-E-cadherin antibody (clone HECD-1; Takara, Kusatsu, Japan) for 1 hour at room temperature. The details of the procedure were described previously by our laboratory.¹⁷

Evaluation of immunohistochemical staining

In accordance with our previous report,¹² membranous staining of the tumor cells was considered to be positive for S100A16. The staining intensity was categorized into 4 groups: 0= negative; 1= weak; 2= moderate; and 3= strong. The tumors with a staining score of 2 or 3 were judged as positive. A tissue consisting of >5% positive tumor cells was considered to show significant S100A16 staining. Membranous staining of the tumor cells was considered to be a positive result for E-cadherin, and cytoplasmic staining of the tumor cells was considered to be a positive result for vimentin. According to previous studies,^{18,19} the evaluation of the stainability was performed in accordance with the following immunoreactive score (IRS): IRS = staining intensity (SI) \times percentage of positive tumor cells (PP). SI was defined as 0, negative; 1, weak; 2, moderate; and 3, strong. PP was defined as 0, negative; 1, 1%–10% positive tumor cells; 2, 11%–50% positive tumor cells; 3, 51%–80% tumor cells; and 4, >80% positive tumor cells. An IRS value ≥ 4 was considered to be a positive staining result. All the immunostained sections were reviewed by two investigators

(KK and YS) without any knowledge of the clinical data. Discordant cases were reviewed and discussed until a consensus was reached.

Statistical analysis

The relationships between S100A16 expression and clinicopathological parameters were analyzed by using Fisher's exact test. Survival curves were estimated by the Kaplan–Meier method, and the log rank test was used to evaluate the significance of the survival differences between S100A16-positive and S100A16-negative groups. The Cox proportional hazards regression model was used for multivariable analysis to estimate independent prognostic factors. In the present study, sample size is small (n=65). Therefore, selecting many independent variables may statistically induce bias. We selected independent variables based on a preceding study.²⁰ A *P*-value <0.05 was considered as significant. All reported *P*-values are two-sided. All statistical analyses were performed with EZR Version 1.33 (Saitama Medical Center, Jichi Medical University, Saitama, Japan).

Results

S100A16 expression in lung adenocarcinoma

S100A16 staining was mostly observed in the plasma membrane of tumor cells, but cytoplasmic and nuclear staining was detected in some cases (Figure 1A). S100A16-positive expression was observed in 26 of the 65 (40.0%) cases. S100A16 expression was also detected in vascular endothelial cells and fibroblasts in the tumor stroma. S100A16 was not detected in normal alveolar epithelial cells.

Clinicopathological characteristics of patients

Table 1 summarizes the clinicopathological characteristics of the 65 lung adenocarcinoma patients. The overall follow-up durations ranged from 5.8 to 149.7 months (median =49.6 months). A total of 30 patients were alive at the end of the follow-up, 27 patients died of lung cancer, 3 patients died from other causes, and 5 patients were lost to follow-up. The causes of the 3 non-lung-cancer deaths were multiple

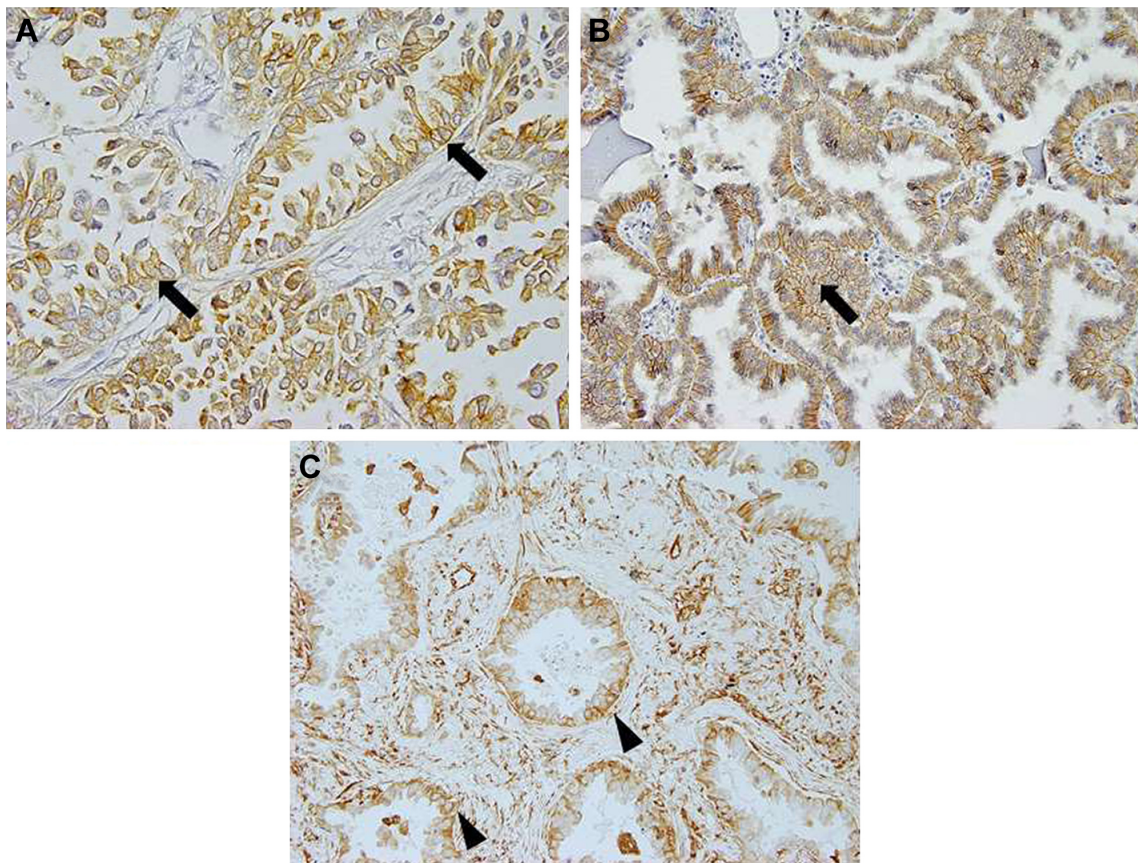


Figure 1 S100A16, E-cadherin, and vimentin expression in lung adenocarcinoma. (A) The majority of the tumor cells showed membranous S100A16 expression (arrows) in lung adenocarcinoma (×400 magnification). (B) Membranous staining of the tumor cells (arrows) was considered to be a positive result for E-cadherin (arrow, ×200 magnification). (C) Cytoplasmic staining of the tumor cells (arrow heads) was considered to be a positive result for vimentin (×200 magnification).

Table 1 Characteristics of the patients

Characteristics	Patients, n (%) (n=65)
Age, years	
Median age (range)	60 (41–74)
≤60	31 (47.7)
>60	34 (52.3)
Sex	
Male	35 (53.8)
Female	30 (46.2)
Smoking habit	
Never smoked	36 (55.4)
Smoker	29 (44.6)
p-TNM stage ^a	
Stage IIA/IIB	16 (24.6)
Stage IIIA	49 (75.4)
Surgical procedure	
Lobectomy	63 (96.9)
Pneumonectomy	2 (3.1)
Chemotherapy regimen	
Carboplatin-based	18 (27.7)
Cisplatin-based	47 (72.3)
Chemotherapy cycle	
1–2	9 (13.8)
3–4	56 (86.2)
Vital status	
Alive	30 (46.2)
Lung cancer-related death	27 (41.5)
Other causes of death	3 (4.6)
Unknown	5 (7.7)

Note: ^aEach case was reassigned to a pathological stage on the basis of the IASLC Lung Cancer Staging Project (7th edition).

Abbreviations: IASLC, International Association for the Study of Lung Cancer; p-TNM, pathological TNM.

myeloma, endometrial cancer, and acute myocardial infarction. Loss to follow-up of the 5 patients was due to discontinuing hospital attendance, and the durations of these patients' follow-up ranged from 14.7 to 59.5 months (median =58.2 months).

Relationship between S100A16 expression and clinicopathological characteristics

Table 2 summarizes the relationships between S100A16 expression and clinicopathological characteristics. There was no significant correlation between S100A16 expressions and the age, sex, smoking habits, tumor differentiation, or p-TNM stage.

Kaplan–Meier estimates of DFS and OS in S100A16-positive and S100A16-negative patients

All the 65 patients with lung adenocarcinoma were included in the survival analysis. Although S100A16 expression was

Table 2 Relationships between S100A16 expression and clinicopathological parameters

Clinicopathological parameters	S100A16 expression		Total	P-value
	Positive (n=26)	Negative (n=36)		
Age, years; n (%)				0.613
≤60	11 (35.5)	20 (64.5)	31	
>60	15 (44.1)	19 (55.9)	34	
Sex; n (%)				0.623
Male	13 (37.1)	22 (62.9)	35	
Female	13 (43.3)	17 (56.7)	30	
Smoking habits; n (%)				0.455
Never smoked	10 (34.5)	19 (65.5)	29	
Smoker	16 (44.4)	20 (55.6)	36	
Tumor differentiation; n (%)				1.000
Well	4 (44.4)	5 (55.6)	9	
Moderately/poorly	22 (39.3)	34 (60.7)	56	
p-TNM stage ^a ; n (%)				1.000
Stage IIA/IIB	6 (37.5)	10 (62.5)	16	
Stage IIIA	20 (40.8)	29 (59.2)	49	

Note: ^aEach case was reassigned to a pathological stage on the basis of the IASLC Lung Cancer Staging Project (7th edition).

Abbreviations: IASLC, International Association for the Study of Lung Cancer; p-TNM, pathological TNM.

not correlated with DFS (Figure 2A), the S100A16-positive group showed significantly shorter OS than the S100A16-negative group (median =53.4 vs 114.5 months, respectively, $P=0.009$; Figure 2B).

Effect of S100A16 expression on patients' survival with univariable and multivariable analyses

Univariable analysis performed according to the Cox proportional hazard model indicated that the p-TNM stage (HR =10.22; 95% CI =1.38–75.45; $P=0.02$) and S100A16 expression (HR =2.73; 95% CI =1.25–5.96; $P=0.01$) were significantly correlated with shorter OS. Furthermore, multivariable analysis confirmed that S100A16 expression (HR =4.79; 95% CI =1.87–12.23; $P=0.001$) was significantly correlated with a shorter OS independent of other factors (Table 3).

Relationship between S100A16 expression and EMT-related markers, E-cadherin and vimentin expressions

Immunohistochemical staining of E-cadherin and vimentin was not performed in one case because a tissue block was not available. Figure 1B and C shows positive cases of E-cadherin and vimentin. Positive S100A16 expression was not correlated with the loss of E-cadherin ($P=0.945$) or gain of vimentin ($P=0.772$; Table 4).

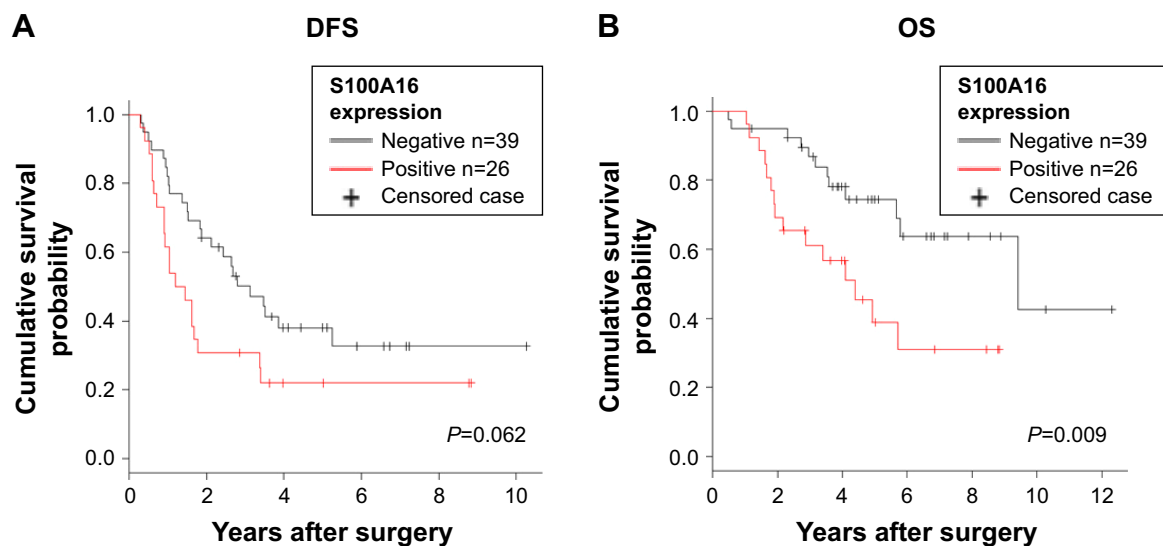


Figure 2 Survival analysis. (A) DFS; (B) OS.

Abbreviations: DFS, disease-free survival; OS, overall survival.

Discussion

In the present study, we demonstrated that S100A16 expression is correlated with a poorer prognosis and is an independent prognostic factor for survival in patients with resected lung adenocarcinoma who receive platinum-based adjuvant chemotherapy. Several studies reported that chemoresistance and metastasis were closely correlated in some molecules.^{21,22} We previously reported that S100A16 expression was correlated with vascular and lymphatic invasion in lung adenocarcinomas.¹² Because local cancer invasion and migration are the initial steps of metastasis,²³ this result

raises the possibility that S100A16-overexpressing cancer cells show a more aggressive phenotype with metastatic ability, and S100A16 expression is correlated with resistance to platinum-based adjuvant chemotherapy.

The biological functions of S100A16 in cancer cells are still unclear. Zhu et al reported that, in prostate cancer, S100A16 promotes cell invasion, migration, and proliferation through the activation of the AKT signaling pathway.²⁴ The AKT signaling pathway promotes cell survival, suppresses apoptosis, and promotes proliferation in various cancers including lung adenocarcinoma.²⁵ Furthermore, activated

Table 3 Univariable and multivariable analyses of the effects of S100A16 expression on OS

Factors	Univariable analysis			Multivariable analysis		
	HR	95% CI	P-value	HR	95% CI	P-value
S100A16 expression						
Positive vs negative	2.73	1.25–5.96	0.01	4.79	1.87–12.23	0.001
Age, years						
≤60 vs >60	2.01	0.89–4.51	0.09	1.83	0.75–4.45	0.18
Sex						
Male vs female	0.93	0.43–2.03	0.87	0.39	0.11–1.35	0.14
Smoking habits						
Smokers vs nonsmokers	1.20	0.56–2.60	0.64	0.49	0.15–1.64	0.25
p-TNM stage						
Stage III vs stage IIA/IIB	10.22	1.38–75.45	0.02	21.44	2.62–175.00	0.004
Tumor differentiation						
Poorly/moderately vs well	1.54	0.46–5.13	0.48	1.09	0.46–2.58	0.84
Platinum agent						
CDDP vs CBDCA	0.47	0.22–1.01	0.05	0.40	0.16–1.02	0.06
Chemotherapy cycle						
3–4 cycles vs 1–2 cycles	0.65	0.24–1.73	0.39	1.04	0.28–3.92	0.94

Note: Analyses were performed using Cox proportional hazard regression model.

Abbreviations: CBDCA, carboplatin; CDDP, cisplatin; OS, overall survival; p-TNM, pathological TNM.

Table 4 Relationships between S100A16 expression and EMT markers E-cadherin and vimentin

Clinicopathological parameters	S100A16 expression		Total	P-value
	Positive (n=26)	Negative (n=38)		
E-cadherin; n (%)				0.771
Positive	16 (35.5)	22 (64.5)	38	
Negative	10 (44.1)	16 (55.9)	26	
Vimentin; n (%)				0.945
Positive	8 (37.1)	12 (62.9)	20	
Negative	18 (43.3)	26 (56.7)	44	

Abbreviation: EMT, epithelial–mesenchymal transition.

AKT plays an important role in cisplatin resistance of lung cancer.^{26,27} Thus, our results lead to the following hypothesis: S100A16 induces the metastatic potential and resistance to platinum-based adjuvant chemotherapy of lung adenocarcinoma through the activation of the AKT signaling pathway. EMT is a process whereby epithelial cells lose polarity and cell–cell adhesion and progress to invasive mesenchymal cells.²⁸ EMT is correlated with not only the acquisition of invasive and metastatic ability, but also the chemoresistance of several cancers.¹³ Zhou et al reported that S100A16 promotes EMT through the Notch1 signaling pathway in breast cancer.¹⁴ We evaluated the relationship between S100A16 expression and the EMT-related markers E-cadherin and vimentin. In the present study, there was no significant correlation between S100A16 expression and EMT markers. Therefore, these results raise the possibility that the role of S100A16 in the EMT process is different between lung adenocarcinoma and breast cancer.

Lung squamous cell carcinoma patients were excluded from the present study because of the possibility that the S100A16 function is different between lung adenocarcinoma and squamous cell carcinoma. Sapkota et al reported that, in oral squamous cell carcinoma patients, a high S100A16 expression is correlated with a less aggressive tumor phenotype and good prognosis.²⁹ These findings suggest that the function associated with tumorigenesis and tumor progression may be different between adenocarcinoma and squamous cell carcinoma.

Our study had several limitations. First, the sample size was small, and a retrospective single-center study may involve some selection bias. Second, the platinum-based chemotherapy regimen included cisplatin and carboplatin in the present study. Evidence for the efficacy of cisplatin-based adjuvant chemotherapy is being accumulated, but evidence for the efficacy of carboplatin-based adjuvant chemotherapy from large-scale clinical trials is still insufficient.³⁰

Conclusion

In conclusion, we revealed that S100A16 expression is a prognostic indicator of a poorer survival probability in lung adenocarcinoma patients receiving platinum-based adjuvant chemotherapy. A large-scale prospective study and elucidation of the biological functions of S100A16 are necessary to confirm the utility of S100A16 as a prognostic marker for platinum-based adjuvant chemotherapy and a promising therapeutic target for lung adenocarcinoma.

Acknowledgments

The authors are grateful to Professor Yukitoshi Satoh and Dr Kazu Shiomi (Department of Thoracic and Cardiovascular Surgery, School of Medicine, Kitasato University) for contributing to the acquisition and interpretation of the data. The authors are also grateful to Keita Saito and Kazuo Hachimura for contributing to the analysis and interpretation of the data. This study was supported in part by a Grant-in-Aid for Scientific Research (C) from Japan Society for the Promotion of Science (JSPS) KAKENHI Grant numbers JP23590414, JP26460441.

Disclosure

The authors report no conflicts of interest in this work.

References

- Parkin DM. Global cancer statistics in the year 2000. *Lancet Oncol.* 2001;2(9):533–543.
- Salgia R. Mutation testing for directing upfront targeted therapy and post-progression combination therapy strategies in lung adenocarcinoma. *Expert Rev Mol Diagn.* 2016;16(7):737–749.
- Goya T, Asamura H, Yoshimura H, et al. Prognosis of 6644 resected non-small cell lung cancers in Japan: a Japanese lung cancer registry study. *Lung Cancer.* 2005;50(2):227–234.
- Arriagada R, Bergman B, Dunant A, et al. Cisplatin-based adjuvant chemotherapy in patients with completely resected non-small-cell lung cancer. *N Engl J Med.* 2004;350(4):351–360.
- Winton T, Livingston R, Johnson D, et al. Vinorelbine plus cisplatin vs. observation in resected non-small-cell lung cancer. *N Engl J Med.* 2005;352(25):2589–2597.
- Douillard JY, Rosell R, De Lena M, et al. Adjuvant vinorelbine plus cisplatin versus observation in patients with completely resected stage IB–IIIA non-small-cell lung cancer (Adjuvant Navelbine International Trialist Association [ANITA]): a randomised controlled trial. *Lancet Oncol.* 2006;7(9):719–727.
- Donato R. S100: a multigenic family of calcium-modulated proteins of the EF-hand type with intracellular and extracellular functional roles. *Int J Biochem Cell Biol.* 2001;33(7):637–668.
- Marenholz I, Heizmann CW, Fritz G. S100 proteins in mouse and man: from evolution to function and pathology (including an update of the nomenclature). *Biochem Biophys Res Commun.* 2004;322(4):1111–1122.
- Chen H, Xu C, Jin Q, Liu Z. S100 protein family in human cancer. *Am J Cancer Res.* 2014;4(2):89–115.
- Sturchler E, Cox JA, Durussel I, Weibel M, Heizmann CW. S100A16, a novel calcium-binding protein of the EF-hand superfamily. *J Biol Chem.* 2006;281(50):38905–38917.

11. Marenholz I, Heizmann CW. S100A16, a ubiquitously expressed EF-hand protein which is up-regulated in tumors. *Biochem Biophys Res Commun.* 2004;313(2):237–244.
12. Saito K, Kobayashi M, Nagashio R, et al. S100A16 is a prognostic marker for lung adenocarcinomas. *Asian Pac J Cancer Prev.* 2015;16(16):7039–7044.
13. Du B, Shim JS. Targeting epithelial-mesenchymal transition (EMT) to overcome drug resistance in cancer. *Molecules.* 2016;21(7):pii:E965.
14. Zhou W, Pan H, Xia T, et al. Up-regulation of S100A16 expression promotes epithelial-mesenchymal transition via Notch1 pathway in breast cancer. *J Biomed Sci.* 2014;21:97.
15. Travis WD, Brambilla E, Nicholson AG, et al. The 2015 World Health Organization Classification of Lung Tumors: Impact of Genetic, Clinical and Radiologic Advances Since the 2004 Classification. *J Thorac Oncol.* 2015;10(9):1243–1260.
16. Goldstraw P, Crowley J, Chansky K, et al. The IASLC Lung Cancer Staging Project: proposals for the revision of the TNM stage groupings in the forthcoming (seventh) edition of the TNM Classification of malignant tumours. *J Thorac Oncol.* 2007;2(8):706–714.
17. Katono K, Sato Y, Jiang SX, et al. The clinicopathological significance of S100A10 expression in lung adenocarcinomas. *Asian Pac J Cancer Prev.* 2016;17(1):289–294.
18. Sung R, Lee SH, Ji M, et al. Epithelial-mesenchymal transition-related protein expression in biliary epithelial cells associated with hepatolithiasis. *J Gastroenterol Hepatol.* 2014;29(2):395–402.
19. Zhang H, Liu J, Yue D, et al. Clinical significance of E-cadherin, beta-catenin, vimentin and S100A4 expression in completely resected squamous cell lung carcinoma. *J Clin Pathol.* 2013;66(11):937–945.
20. Ryuge S, Sato Y, Nagashio R, et al. Prognostic significance of nestin expression in patients with resected non-small cell lung cancer treated with platinum-based adjuvant chemotherapy; relationship between nestin expression and epithelial to mesenchymal transition related markers. *PLoS One.* 2017;12:e0173886.
21. Xu J, Yue CF, Zhou WH, et al. Aurora-A contributes to cisplatin resistance and lymphatic metastasis in non-small cell lung cancer and predicts poor prognosis. *J Transl Med.* 2014;12:200.
22. Acharyya S, Oskarsson T, Vanharanta S, et al. A CXCL1 paracrine network links cancer chemoresistance and metastasis. *Cell.* 2012;150(1):165–178.
23. van Zijl F, Krupitza G, Mikulits W. Initial steps of metastasis: cell invasion and endothelial transmigration. *Mutat Res.* 2011;728(1–2):23–34.
24. Zhu W, Xue Y, Liang C, et al. S100A16 promotes cell proliferation and metastasis via AKT and ERK cell signaling pathways in human prostate cancer. *Tumour Biol.* 2016;37(9):12241–12250.
25. Papadimitrakopoulou V. Development of PI3K/AKT/mTOR pathway inhibitors and their application in personalized therapy for non-small-cell lung cancer. *J Thorac Oncol.* 2012;7(8):1315–1326.
26. Zhang Y, Bao C, Mu Q, et al. Reversal of cisplatin resistance by inhibiting PI3K/Akt signal pathway in human lung cancer cells. *Neoplasma.* 2016;63(3):362–370.
27. Lin Y, Wang Z, Liu L, Chen L. Akt is the downstream target of GRP78 in mediating cisplatin resistance in ER stress-tolerant human lung cancer cells. *Lung Cancer.* 2011;71(3):291–297.
28. Sung WJ, Park KS, Kwak SG, Hyun DS, Jang JS, Park KK. Epithelial-mesenchymal transition in patients of pulmonary adenocarcinoma: correlation with cancer stem cell markers and prognosis. *Int J Clin Exp Pathol.* 2015;8(8):8997–9009.
29. Sapkota D, Bruland O, Parajuli H, et al. S100A16 promotes differentiation and contributes to a less aggressive tumor phenotype in oral squamous cell carcinoma. *BMC Cancer.* 2015;15:631.
30. Ou W, Sun HB, Ye X, et al. Adjuvant carboplatin-based chemotherapy in resected stage IIIA-N2 non-small cell lung cancer. *J Thorac Oncol.* 2010;5(7):1033–1041.

OncoTargets and Therapy

Publish your work in this journal

OncoTargets and Therapy is an international, peer-reviewed, open access journal focusing on the pathological basis of all cancers, potential targets for therapy and treatment protocols employed to improve the management of cancer patients. The journal also focuses on the impact of management programs and new therapeutic agents and protocols on

Submit your manuscript here: <http://www.dovepress.com/oncotargets-and-therapy-journal>

patient perspectives such as quality of life, adherence and satisfaction. The manuscript management system is completely online and includes a very quick and fair peer-review system, which is all easy to use. Visit <http://www.dovepress.com/testimonials.php> to read real quotes from published authors.

Dovepress