

The clinicopathological significance of *HES1* promoter hypomethylation in patients with colorectal cancer

Yinfang Wu^{1,*}
Lijie Gong^{1,*}
Ji Xu^{1,2}
Yiping Mou^{1,2}
Xiaowu Xu^{1,2}
Zhenyuan Qian^{1,2}

¹Department of Gastrointestinal and Pancreatic Surgery, Zhejiang Provincial People's Hospital, People's Hospital of Hangzhou Medical College, Hangzhou, Zhejiang, ²Key Laboratory of Gastroenterology of Zhejiang Province, Hangzhou, Zhejiang, People's Republic of China

*These authors contributed equally to this work

Abstract: Hairy/enhancer of split 1 (*HES1*) is a basic helix–loop–helix transcriptional repressor. Aberrant demethylation has been considered a common mechanism of tumor promoter gene activation. In the current study, we aimed to investigate the methylation status of the *HES1* promoter and correlations with clinicopathological parameters and prognosis in colorectal cancer (CRC). The expression of *HES1* in 50 paired CRC specimens and adjacent normal tissues was determined by using quantitative real-time polymerase chain reaction and immunohistochemical analysis. Moreover, DNA methylation status was evaluated through methylation-specific polymerase chain reaction and bisulfite sequencing. The correlation of methylation status with *HES1* expression level and clinicopathological parameters was statistically analyzed in CRC patients. Our data showed that the methylation level of *HES1* was significantly decreased and negatively correlated with *HES1* expression in CRC tissues. Moreover, *HES1* hypomethylation was associated with a poor histological grade, Dukes' classification, lymph node metastasis, and clinical stages ($P < 0.05$). Furthermore, survival analyses revealed that a decreased methylation status of *HES1* was linked to poor prognosis of CRC patients. In conclusion, promoter hypomethylation upregulates *HES1* expression and plays a critical role in the progression and prognosis of CRC patients.

Keywords: colorectal cancer, *HES1*, hypomethylation, prognosis, progression

Introduction

Colorectal cancer (CRC) is the third most fatal type of cancer and the fourth leading cause of cancer-related deaths worldwide.¹ Significant progress has been made to treat the disease, including surgery, simultaneous radio- and chemotherapy, molecular targeted therapy, and biotherapy; however, CRC remains a challenging malignancy with an invariable appearance of tumor recurrence. The 5-year survival rate of CRC is approximately 60%.² Therefore, investigating the pathogenesis and underlying molecular mechanisms involved in CRC progression is critical for early diagnosis and will provide more effective methods for CRC prevention and therapy.

Hairy/enhancer of split 1 (*HES1*) is a basic helix-loop-helix (bHLH) transcriptional repressor, regulated by the Notch signaling pathway.³ Previous studies have proven that *HES1* is involved in various biological processes, including neurogenesis, inflammation, and cellular development.^{4–6} Moreover, several studies have reported that *HES1* is overexpressed in a variety of human malignancies, including CRC.^{7–9} This indicates a potential role in the process of tumorigenesis. Recently, it was demonstrated that *HES1* supported cell proliferation and migration in human colon cancer,

Correspondence: Xiaowu Xu; Zhenyuan Qian
Department of Gastrointestinal and Pancreatic Surgery, Zhejiang Provincial People's Hospital, Number 158 Shangtang Road, Hangzhou 310000, Zhejiang, People's Republic of China
Tel/fax +86 571 8533 5800
Email xuxiaowu77@hotmail.com; qgrdfito@sina.com

via activating B cell-specific Moloney murine leukemia virus integration site-1 (Bmi-1) and the PTEN/Akt/GSK3 β pathway.¹⁰ In addition, Weng et al¹¹ reported that HES1 promoted the invasion ability of CRC cells via the STAT3-MMP14 signaling pathway. HES1 was identified as a self-renewal marker in colon carcinoma in nude mice, which improved the tumor-initiating capability of colon cancer cells.¹² Moreover, Yuan et al¹³ showed that HES1 promoted tumor metastasis by inducing epithelial–mesenchymal transition and functioned as a poor prognostic factor for CRC patients. Taken together, these results suggested that upregulation of HES1 may play a role in the occurrence and progression of CRC.

Although HES1 may play an important role in the progression and prognosis of CRC, the underlying mechanism of action that is involved in HES1 upregulation in cancer cells remains to be elucidated. DNA methylation, a process in which a methyl group is added to cytosine in cytosine-phosphate-guanine (CpG) dinucleotides, is a type of epigenetic modification in the human genome that plays a critical role in the regulation of gene expression.^{14,15} Previous studies have shown that decreased methylation of tumor promoter genes frequently occurs in a variety of human malignancies, including CRC,^{16–18} which accelerated tumor progression and was related to poor prognosis.¹⁶ Until now, *HES1* hypomethylation has been found in intestinal stem and progenitor cells, which leads to upregulation of HES1.^{19,20} So far, several regulatory mechanisms of HES1 expression have been identified;^{21,22} however, whether the methylation status affects HES1 expression in CRC remains unknown.

In the present study, we compared the methylation status of the *HES1* promoter in CRC tissues with adjacent normal specimens and correlated this with clinicopathological parameters and prognosis.

Patients and methods

Patients and tissue specimens

A total of 50 samples of tumor tissues and adjacent normal specimens (3 cm from the tumor edge) were gained from patients undergoing tumor resections between 2012 and 2013 in Zhejiang Provincial People's Hospital. All participants provided written informed consent. The median age of the patients was 66 years (39–76 years). All patients had a definite histological diagnosis of CRC. None of the patients had received chemotherapy or radiotherapy prior to surgery. Patients were followed up postoperatively via telephone consultations. This study was approved by the institutional ethics committee of Zhejiang Provincial People's Hospital. Resected tissues were directly frozen in liquid nitrogen

after resection from the body and were stored at -80°C until further analysis or were fixed in 4% paraformaldehyde for paraffin embedding.

Quantitative real-time polymerase chain reaction (qRT-PCR)

Total RNA was removed from tissues using Trizol reagent (Thermo Fisher Scientific, Waltham, MA, USA), and cDNA was synthesized using a TaqMan Reverse Transcription kit (Thermo Fisher Scientific). For mRNA analysis, the expression of HES1 was detected with SYBR Green PCR Master Mix (Thermo Fisher Scientific). GAPDH mRNA levels were used for normalization. The cycling programmer was conducted in a total volume of 20 μL by using the following procedure: preliminary denaturation at 95°C for 10 min, followed by 39 cycles of denaturation at 95°C for 30 s, annealing at 55°C for 30 s, and elongation at 72°C for 60 s, followed by a final elongation step at 95°C for 10 min. qPCR was operated in triplicate, involving no-template controls, using the Bio-Rad CFX-96 Real-time PCR system and iQ SYBR Green Supermix (Bio-Rad Laboratories Inc., Hercules, CA, USA). Relative gene expression of mRNA was quantified via the $2^{-\Delta\Delta\text{Ct}}$ method. The primers (GeneCopoeia, Guangzhou, China) used were as follows: HES1 (forward) 5'-TCAACACGACACCGGATAAAC-3' and (reverse) 5'-GCCGCGAGCTATCTTTCTTCA-3'; and GAPDH (forward) 5'-CTTTGGTATCGTGGAAGGACTC-3' and (reverse) 5'-GTAGAGGCAGGGGATGATGTTCT-3'.

Immunohistochemical detection

Immunohistochemical staining was performed with the Vectastain Elite ABC kit (Vector Laboratories, Burlingame, CA, USA). For all CRC tissues the following procedures were performed: 4% paraformaldehyde fixation at room temperature, paraffin embedding, section (4 μm thickness), deparaffinization in xylene with series concentration gradients, then rehydration, 3% hydrogen peroxide incubation for 25 min, antigen retrieval at 100°C by citrate buffer solution, 10% goat serum (Thermo Fisher Scientific) blocking, followed by Rabbit anti-HES1 antibody incubation (1:200; Abcam, Shanghai, China) at 4°C overnight, next biotinylated anti-rabbit secondary antibody incubation (1:100; BioWorld, Minneapolis, MN, USA) at 37°C for 20 min, and then incubation of streptavidin–horseradish peroxidase complex. Finally, the slides were visualized in diaminobenzidine solution (Sigma-Aldrich Co., St Louis, MO, USA). All sections were separately assessed by two certified pathologists

who were uninformed of patients' clinical pathology and other information. Quantitative analysis for the percentage of HES1-positive cells was performed.

DNA extraction and bisulfite modification

Genomic DNA was extracted from resected tumor tissues and adjacent normal specimens using the QIAamp DNA mini kit (Qiagen NV, Venlo, the Netherlands) according to the manufacturer's protocol. The quality and quantity of the isolated DNA were measured by NanoDrop 2000 Spectrophotometer (Thermo Fisher Scientific). Bisulfite treatment of genomic DNA was performed using an EpiTect Fast DNA Bisulfite Kit (Qiagen NV) according to the manufacturer's instructions. Bisulfite-treated DNA samples were next kept at -20°C for further use.

Methylation-specific PCR (MSP)

CpG islands in the *HES1* promoter region were predicted using MethPrimer tools. The methylation level of CpG islands in *HES1* promoter regions was initially determined by MSP. Briefly, PCR was conducted in a total volume of 25 μL containing 80 ng of bisulfite-modified DNA template under the following condition: 95°C for 5 min, followed by 35 cycles each containing 95°C denature for 30 s, 55°C annealing for 30 s, and 72°C elongation for 30 s, followed by a final extension at 72°C for 10 min. Nuclease-free water served as a negative control. Aliquots from PCR products (172 bp for methylation and 175 bp for unmethylation) were visualized on 2% agarose gel containing 5 mg/mL ethidium bromide, analyzed, and photographed using ChemiDoc™ MP Imaging System (Bio-Rad Laboratories Inc.) under ultraviolet (UV) illumination. The methylation-specific PCR (MSP) primers (GeneCopoeia) designed according to specific sequences of CpG islands in the *HES1* promoter regions were as follows: methylated (M) (forward) 5'-CGGAGGTAGGAGGTTGATTC-3' and (reverse) 5'-TTAAAATTTTCACTCGACCG-3'; and unmethylated (U) (forward) 5'-GAGTGGAGGTAGGAGGTTGATTT-3' and (reverse) 5'-TTAAAATTTTCACTCAACCAAAA-3'.

Sodium bisulfite genomic sequencing (BGS)

The CpG island region of *HES1* promoter was amplified with sodium bisulfite-modified DNA template under the following PCR conditions: 95°C for 5 min and then 60°C for 50 s, followed by 35 cycles of 95°C for 30 s, 55°C for

50 s, and 72°C for 50 s and a final elongation step at 72°C for 10 min. The sequences of bisulfite-sequencing PCR (BSP) primers (GeneCopoeia) were as follows: (forward) 5'-GGAATATTGTATTAAGGGTAGGTAGG-3' and (reverse) 5'-TCAATAATTCCTAACTCTAAATAACC-3'. Next, the BSP products including four CpG sites were cloned into the pMD18-T vector (TaKaRa, Dalian, China) and then applied to transform competent *Escherichia coli* T10 cells (Thermo Fisher Scientific) using standard procedures. For all CRC tissues the plasmid DNA was isolated from eight insert-positive clones per each sample using a Qiagen Miniprep kit (Qiagen NV) and then sequenced using the Pyrosequencing PSQ96 HS System (Qiagen NV) depending on the manufacturer's instructions. The amount of C relative to the total amount of C and T at each CpG sites was determined as the percentage (ie, 0–100). The average of the relative levels of C in the four CpG sites served as the overall *HES1* methylation score for each sample. The experiments were performed in triplicate.

Statistical analysis

Statistical analysis was achieved using IBM SPSS Statistics software version 20 (IBM Corporation, Armonk, NY, USA). Quantitative variables, expressed as mean \pm SD, were analyzed with Student's *t*-test or one-way analysis of variance (ANOVA). Categorical variables were assessed based on Pearson chi-squared test. Survival analysis was performed using the Kaplan–Meier method as well as the log-rank test. Correlations were determined via Spearman rank correlation analysis. The statistical significance was prescribed at $P < 0.05$.

Results

HES1 expression is significantly elevated in CRC tissues

RT-PCR was applied to evaluate HES1 mRNA levels in 50 CRC tissues and paired adjacent normal samples. We observed that, in all 50 CRC tissues, the relative HES1 expression was significantly higher compared to that of adjacent normal samples (Figure 1A, $P < 0.05$). These findings were in line with the results of a previous study.¹³ In addition, the intensity of HES1 expression was positively associated with the histological grade (Figure 1A, $P < 0.05$). Similar results were obtained when HES1 expression was achieved at the protein level using immunohistochemical staining techniques (Figure 1B). Thus, the aforementioned results suggested that upregulation of HES1 may be involved in the development of CRC.

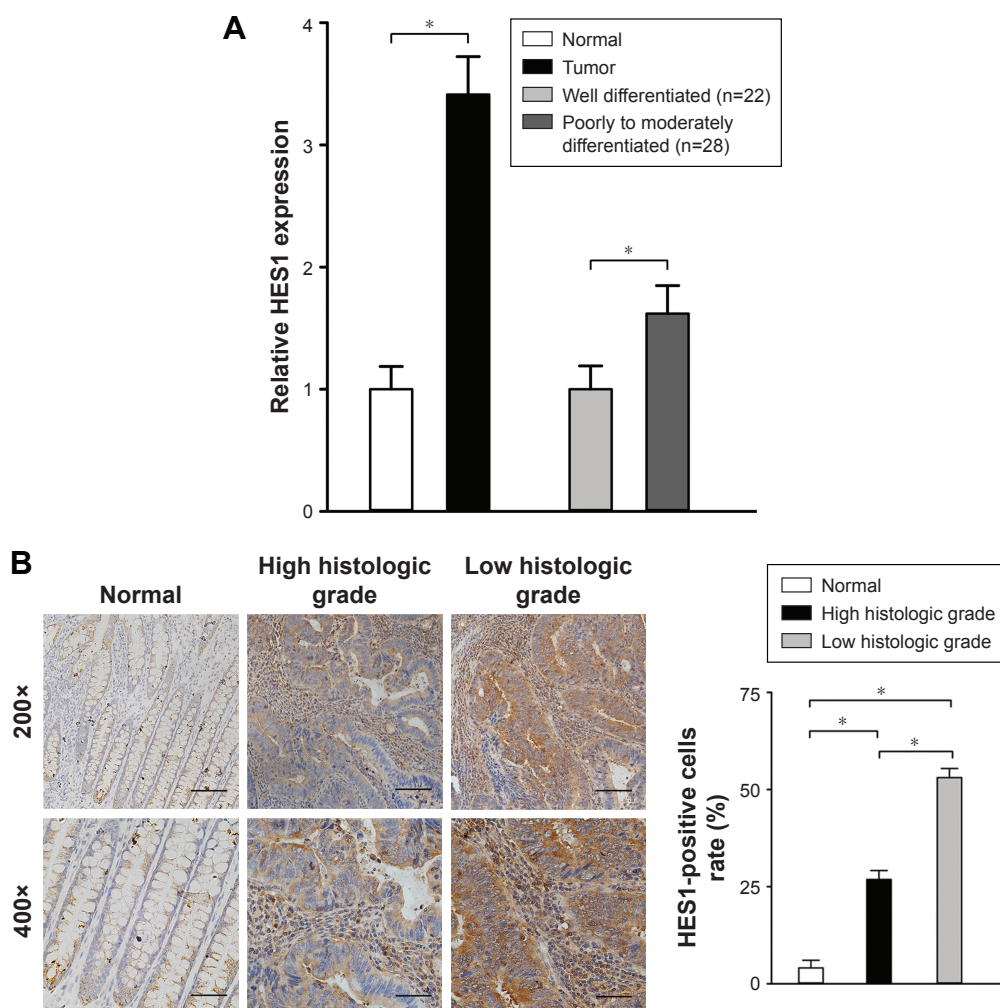


Figure 1 HES1 expression in CRC tissues and adjacent normal samples.

Notes: (A) The expression of HES1 in 50 cases of CRC tissues and adjacent normal samples was determined using qRT-PCR. Data are presented as mean \pm SD of three independent experiments. GAPDH was used as an internal control. $*P < 0.05$, one-way ANOVA sections. (B) Immunohistochemical staining of HES1 in CRC tissue sections and adjacent normal samples. A quantitative graph for the percentage of HES1-positive cells is presented (five random fields, four sections per sample, $*P < 0.05$, scale bars: 250 μm or 500 μm , two magnifications: 200 \times or 400 \times).

Abbreviations: ANOVA, analysis of variance; CRC, colorectal cancer; HES1, hairy/enhancer of split 1; qRT-PCR, quantitative real-time polymerase chain reaction.

In addition, we further correlated the HES1 mRNA expression profile with several clinicopathological characteristics. As shown in Table 1, upregulation of HES1 was significantly correlated with the histological grade, tumor invasion, Dukes' classification, lymph node metastasis, distant metastasis, and clinical stages ($P < 0.05$). However, no significant correlation was found with age, gender, tumor location, or tumor size ($P > 0.05$). In conclusion, these findings suggest that upregulation of HES1 may be a potential biomarker for CRC malignancy.

CRC tissues show aberrant *HES1* hypomethylation

To investigate whether an epigenetic mechanism contributed to HES1 upregulation in CRC, we examined the methylation

status of CpG islands in the *HES1* promoter region. Using a bioinformatics approach, we predicted four CpG islands in the *HES1* promoter region (Figure 2A). Next, the methylation levels of the CpG islands were determined by MSP. Representative agarose gels of MSP products for each sample are presented in Figure 2B. The data indicated that *HES1* was increasingly hypomethylated in cancer tissues compared to matched normal samples. Furthermore, sequences of CpG islands in the *HES1* promoter regions after bisulfite modification were analyzed in CRC tissues and normal samples. For this, we adopted a previously described cutoff of $\geq 8\%$ methylated alleles for hypermethylated colorectal tissues,²³ whereas hypomethylation was defined as less than 8%. As shown in Table 2, *HES1* hypomethylation was detected in 76.0% (38/50) of CRC tissues, while in

Table 1 Clinicopathological correlation of HES1 mRNA expression and methylation status in 50 primary CRC tissues

Clinicopathological features	Patients (n)	mRNA expression		Methylation status		P-value ^b
		Mean ± SD	P-value ^a	Hypomethylation (n=38) (%)	Hypermethylation (n=12) (%)	
Age, years						0.416
≤60	18	1.6885±0.0562	0.958	12 (31.6)	6 (50.0)	
>60	32	1.6813±0.0127		26 (68.4)	6 (50.0)	
Gender						0.099
Male	27	1.6535±0.0254	0.507	23 (60.5)	4 (33.3)	
Female	23	1.6647±0.0338		15 (39.5)	8 (66.7)	
Tumor location						1.000
Colon	34	1.5924±0.1008	0.105	26 (68.4)	8 (66.7)	
Rectum	16	1.6296±0.0334		12 (31.6)	4 (33.3)	
Tumor size (cm)						0.189
≥5	29	1.7014±0.0255	1.000	24 (63.2)	5 (41.7)	
<5	21	1.6998±0.1824		14 (36.8)	7 (58.3)	
Histological grade						0.013
Well	22	1.8877±0.0205	<0.001	13 (34.2)	9 (75.0)	
Poor to moderate	28	1.3330±0.0397		25 (65.8)	3 (25.0)	
Invasion						0.239
T1 + T2	16	1.6443±0.0451	0.019	10 (26.3)	6 (50.0)	
T3 + T4	34	1.5584±0.0189		28 (73.7)	6 (50.0)	
Dukes' classification						0.032
A + B	24	1.6214±0.0651	0.047	15 (39.5)	9 (75.0)	
C + D	26	1.5537±0.1165		23 (60.5)	3 (25.0)	
Lymph node metastasis						<0.001
Negative	19	1.8066±0.2161	0.004	9 (23.7)	10 (83.3)	
Positive	31	1.5795±0.0142		29 (76.3)	2 (16.7)	
Distant metastasis						0.400
Negative	36	1.7347±0.0384	0.009	29 (76.3)	7 (58.3)	
Positive	14	1.6239±0.0655		9 (23.7)	5 (41.7)	
UICC stages						0.013
I + II	26	1.6584±0.0421	0.033	16 (42.1)	10 (83.3)	
III + IV	24	1.5812±0.0057		22 (57.9)	2 (16.7)	

Notes: ^aStudent's t-test; ^bchi-squared test.

Abbreviations: CRC, colorectal cancer; HES1, hairy/enhancer of split 1; UICC, Union for International Cancer Control.

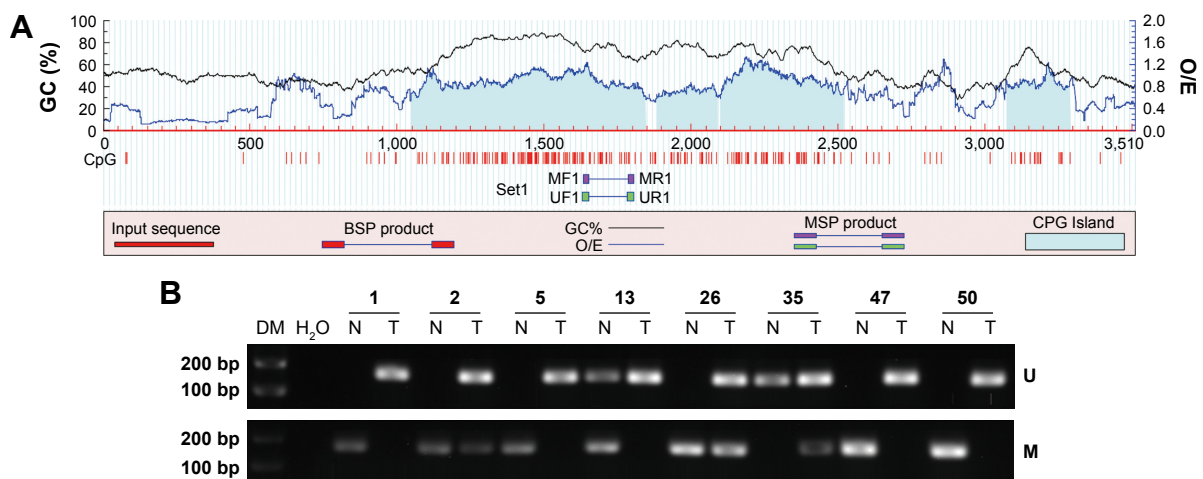


Figure 2 Promoter methylation status of HES1 in CRC tissues and paired normal samples.

Notes: (A) A schematic illustration of the CpG islands in the HES1 promoter region. (B) Representative data of MSP analysis in CRC patients. Experiments were performed in triplicate. T, tumor tissue; N, normal tissue; H₂O, water control; M, methylated HES1; U, unmethylated HES1; the numbers at the very top of part B represent the case numbers.

Abbreviations: BSP, bisulfite-sequencing PCR; CpG, cytosine-phosphate-guanine; CRC, colorectal cancer; DM, DNA marker; GC, guanine and cytosine; HES1, hairy/enhancer of split 1; MF1, methylated forward primer 1; MR1, methylated reverse primer 1; MSP, methylation-specific PCR; O/E, observed/expected CpG ratio; PCR, polymerase chain reaction; UF1, unmethylated forward primer 1; UR1, unmethylated reverse primer 1.

Table 2 Methylation status of *HES1* in different types of CRC tissues

Tissue type	Patients (n)	Methylation status			
		Hypomethylation (%)	Hypermethylation (%)	χ^2	P-value*
Tumor tissue	50	38 (76.0)	12 (24.0)	33.762	<0.001
Normal tissue	50	9 (18.0)	41 (82.0)		

Notes: *Chi-squared test; χ^2 means the test value.

Abbreviations: CRC, colorectal cancer; *HES1*, hairy/enhancer of split 1.

non-tumor colorectal tissues hypomethylation was found in 18.0% (9/50) of tissues. Thus, these results suggested that frequent hypomethylation of *HES1* may occur as a distinct alteration in CRC tissues.

We further analyzed the association between methylation status and clinicopathological characters in the 50 CRC patients. As shown in Table 1, decreased *HES1* methylation levels were significantly correlated with a poor histological grade, Dukes' classification, lymph node metastasis, and clinical stages ($P < 0.05$). However, no significant correlation was found with age, gender, tumor location, tumor size, tumor invasion, or distant metastasis ($P > 0.05$). Overall, these results indicated that *HES1* hypomethylation may be a promising predictive indicator for the progression of CRC.

Correlation between *HES1* hypomethylation and overexpression in CRC tissues

The relation between *HES1* methylation status and the expression of *HES1* was evaluated in CRC patients. As shown in Table 3, tumors and adjacent control tissues demonstrated a significantly higher level of hypomethylated *HES1* in comparison to hypermethylated *HES1*. Moreover, the *HES1* expression level in hypomethylated tumor tissues was increased compared to that in hypomethylated control tissues. However, no significant differences were found between the two hypermethylated tissue types. Overall, a very strong negative correlation was found between decreased methylation status and increased *HES1* mRNA expression.

Table 3 Association of *HES1* promoter hypomethylation with mRNA overexpression in CRC tissues

Tissue type	Patients (n)	HES1 mRNA expression				P-value*
		Hypomethylation		Hypermethylation		
		Mean \pm SD	P-value [‡]	Mean \pm SD	P-value [‡]	
Tumor tissue	50	1.6882 \pm 0.1008	0.009	1.5534 \pm 0.0671	0.066	0.008
Normal tissue	50	1.5832 \pm 0.0624		1.5118 \pm 0.0338		0.031

Notes: Student's *t*-test; [‡]Hypomethylated tumor versus hypomethylated adjacent normal tissues or hypermethylated tumor versus hypermethylated adjacent normal tissues for *HES1* mRNA expression. *Hypomethylated *HES1* versus hypermethylated *HES1* tissue type for *HES1* mRNA expression in tumor and adjacent normal tissues.

Abbreviations: CRC, colorectal cancer; *HES1*, hairy/enhancer of split 1.

Hypomethylation of *HES1* is linked to poor prognosis

Kaplan–Meier survival analysis was performed to evaluate the survival of CRC patients, who were divided into *HES1*-hypermethylated and *HES1*-hypomethylated cases. The data revealed that CRC patients with hypermethylated *HES1* promoters showed significantly prolonged median recurrence duration combined with prolonged median survival duration when compared to patients with hypomethylated *HES1* promoters (42.0 \pm 8.2 months versus 26.2 \pm 6.7 months, $P = 0.002$, Figure 3A; 49.1 \pm 5.9 months versus 28.4 \pm 5.1 months, $P = 0.001$, Figure 3B, log-rank test). In conclusion, these results indicated that *HES1* hypomethylation may function as a negative prognostic factor.

Discussion

Previous studies have demonstrated that an aberrant methylation status (hypermethylation or hypomethylation) is one of the most consistent epigenetic alterations in human cancer.^{24–26} Indeed, altered DNA methylation patterns have been reported to be significantly correlated with tumor progression and prognosis.^{27–29} In the current study, we investigated the promoter methylation status of *HES1* and correlation with clinicopathological parameters and prognosis in CRC.

HES1 is a novel bHLH transcriptional repressor, which is regulated by the Notch signaling pathway.³ Several reports have demonstrated that *HES1* is overexpressed in a variety of human malignancies.^{7–9} In this study, we found that the expression of *HES1* was markedly elevated in CRC tissues,

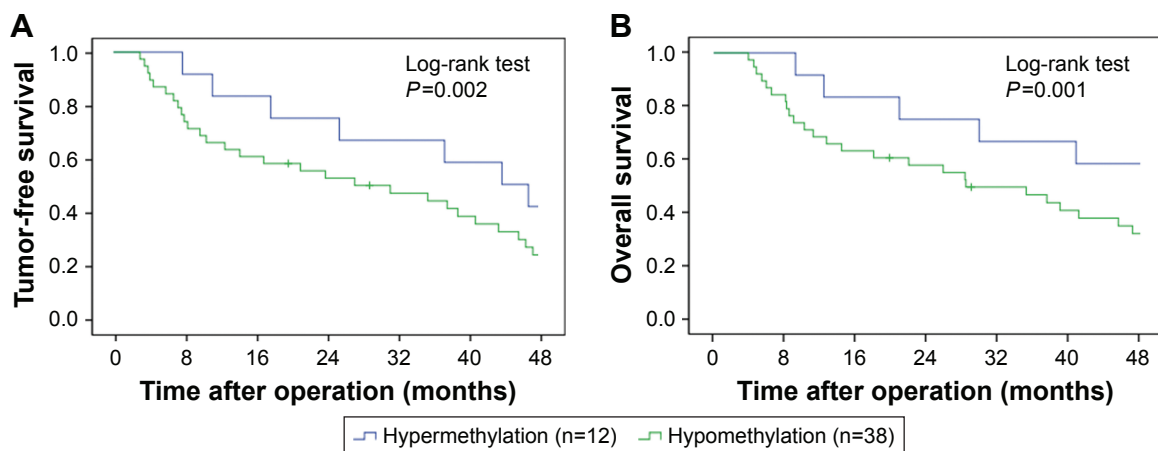


Figure 3 Clinical outcomes by *HES1* methylation status.

Notes: Kaplan–Meier survival analysis for tumor-free survival (**A**) and overall survival (**B**) was conducted based on the methylation status of *HES1* promoter. Results revealed that CRC patients with *HES1* promoter hypomethylation showed significantly prolonged median recurrence duration and prolonged median survival duration compared to patients with *HES1* promoter hypermethylation (42.0 ± 8.2 months versus 26.2 ± 6.7 months, $P=0.002$, **A**; 49.1 ± 5.9 months versus 28.4 ± 5.1 months, $P=0.001$, **B**, log-rank test).

Abbreviations: CRC, colorectal cancer; *HES1*, hairy/enhancer of split 1.

which was consistent with the data presented in a previous study.¹³ Statistical analysis revealed that *HES1* upregulation was significantly correlated with multiple clinicopathological characteristics. The pathological relevance of *HES1* has also been described in other malignancies,^{30–32} suggesting its potential role in tumor development.

It has been proven that aberrant hypomethylation of tumor promoter genes frequently occurs in CRC, such as *TCF3* and *TIAMI*.^{33,34} In this study, we showed that *HES1* methylation was significantly decreased in CRC tissues. The underlying mechanism of *HES1* hypomethylation may be mediated by DNA methyltransferase or thymine DNA glycosylase.^{20,35} Correlation analysis indicated that decreased *HES1* methylation in CRC tissues was significantly associated with unfavorable clinicopathological characteristics. However, no correlation was found with invasion or distant metastasis, which was different from the findings regarding the pathological relevance of *HES1* expression. This discrepancy may be due to the lower number of cases, or that *HES1* expression was affected by factors other than methylation modification. Therefore, in our future studies, the sample size of the studies will be increased.

Kaplan–Meier survival analysis showed that *HES1* hypomethylation was associated with poor prognosis in CRC patients. Similar findings were found for many other tumor promoter genes.^{36,37} A possible explanation for the poor prognosis related to hypomethylation may be the following: 1) decreased promoter methylation results in upregulation of *HES1*, which is essential for tumor differentiation, migration, invasion, and metastasis and leads to a worse CRC

pathological stage; 2) *HES1* overexpression contributes to tumor multidrug resistance conceivably by promoting Stat3 phosphorylation and activation.^{38,39}

Although our results are promising, we have not investigated the mechanisms and roles of decreased *HES1* methylation in the initiation and development of CRC in vitro and in vivo models. In addition, probable mutations and copy number variations of the *HES1* gene in CRC remain to be explored. Thus, additional experiments would be executed in our future studies.

Conclusion

Promoter hypomethylation upregulates *HES1* expression and plays a critical role in the progression and prognosis of CRC. Thus, the methylation status of the *HES1* promoter may serve as an effective indicator of progression and prognosis of CRC and has great potential for clinical applications and CRC management.

Acknowledgment

This study was supported by the Zhejiang Provincial Natural Science Foundation of China (number LY15H160027).

Disclosure

The authors report no conflicts of interest in this work.

References

1. Siegel R, DeSantis C, Jemal A. Colorectal cancer statistics, 2014. *CA Cancer J Clin*. 2014;64(2):104–117.
2. Duineveld LA, van Asselt KM, Bemelman WA, et al. Symptomatic and asymptomatic colon cancer recurrence: a multicenter cohort study. *Ann Fam Med*. 2016;14(3):215–220.

3. Kageyama R, Ohtsuka T, Kobayashi T. The Hes gene family: repressors and oscillators that orchestrate embryogenesis. *Development*. 2007; 134(7):1243–1251.
4. Dhanesh SB, Subashini C, James J. Hes1: the maestro in neurogenesis. *Cell Mol Life Sci*. 2016;73(21):4019–4042.
5. Shang Y, Coppo M, He T, et al. The transcriptional repressor Hes1 attenuates inflammation by regulating transcription elongation. *Nat Immunol*. 2016;17(8):930–937.
6. De Obaldia ME, Bell JJ, Wang X, et al. T cell development requires constraint of the myeloid regulator C/EBP-[alpha] by the Notch target and transcriptional repressor Hes1. *Nat Immunol*. 2013;14(12):1277–1284.
7. Nakahara F, Kitaura J, Uchida T, et al. Hes1 promotes blast crisis in chronic myelogenous leukemia through MMP-9 upregulation in leukemic cells. *Blood*. 2014;123(25):3932–3942.
8. Dailey DD, Anfinson KP, Pfaff LE, et al. HES1, a target of Notch signaling, is elevated in canine osteosarcoma, but reduced in the most aggressive tumors. *BMC Vet Res*. 2013;9:130.
9. Jin H-Y, Zhang H-Y, Wang X, Xu J, Ding Y. Expression and clinical significance of Notch signaling genes in colorectal cancer. *Tumour Biol*. 2012;33(3):817–824.
10. Gao F, Huang W, Zhang Y, et al. Hes1 promotes cell proliferation and migration by activating Bmi-1 and PTEN/Akt/GSK3 β pathway in human colon cancer. *Oncotarget*. 2015;6(36):38667–38680.
11. Weng MT, Tsao PN, Lin HL, et al. Hes1 increases the invasion ability of colorectal cancer cells via the STAT3-MMP14 pathway. *PLoS One*. 2015;10(12):e0144322.
12. Gao F, Zhang Y, Wang S, et al. Hes1 is involved in the self-renewal and tumorigenicity of stem-like cancer cells in colon cancer. *Sci Rep*. 2014;4:3963.
13. Yuan R, Ke J, Sun L, et al. HES1 promotes metastasis and predicts poor survival in patients with colorectal cancer. *Clin Exp Metastasis*. 2015;32(2):169–179.
14. Jjingo D, Conley AB, Soojin VY, Lunyak VV, Jordan IK. On the presence and role of human gene-body DNA methylation. *Oncotarget*. 2012;3(4):462–474.
15. Kulis M, Queirós AC, Beekman R, Martín-Subero JJ. Intragenic DNA methylation in transcriptional regulation, normal differentiation and cancer. *Biochim Biophys Acta*. 2013;1829(11):1161–1174.
16. Kano H, Takayama T, Midorikawa Y, Nagase H. Promoter hypomethylation of RAR-related orphan receptor α 1 is correlated with unfavorable clinicopathological features in patients with colorectal cancer. *Biosci Trends*. 2016;10(3):202–209.
17. Sung HY, Ju W, Ahn J-H. DNA hypomethylation-mediated overexpression of carbonic anhydrase 9 induces an aggressive phenotype in ovarian cancer cells. *Yonsei Med J*. 2014;55(6):1656–1663.
18. Villalba M, Diaz-Lagares A, Redrado M, et al. TMRSS4 protein overexpression and its promoter hypomethylation predict poor prognosis in squamous lung cancer patients. *Eur J Cancer*. 2016;61(suppl 1):S14.
19. Ueo T, Imayoshi I, Imayoshi T, et al. The role of Hes genes in intestinal development, homeostasis and tumor formation. *Development*. 2012; 139(6):1071–1082.
20. Sheaffer KL, Kim R, Aoki R, et al. DNA methylation is required for the control of stem cell differentiation in the small intestine. *Genes Dev*. 2014;28(6):652–664.
21. Müller P, Crofts JD, Newman BS, et al. SOX9 mediates the retinoic acid-induced HES-1 gene expression in human breast cancer cells. *Breast Cancer Res Treat*. 2010;120(2):317–326.
22. Pope JL, Ahmad R, Bhat AA, Washington MK, Singh AB, Dhawan P. Claudin-1 overexpression in intestinal epithelial cells enhances susceptibility to adenomatous polyposis coli-mediated colon tumorigenesis. *Mol Cancer*. 2014;13:167.
23. Iwagami S, Baba Y, Watanabe M, et al. LINE-1 hypomethylation is associated with a poor prognosis among patients with curatively resected esophageal squamous cell carcinoma. *Ann Surg*. 2013;257(3): 449–455.
24. Baylin SB. DNA methylation and gene silencing in cancer. *Nat Clin Pract Oncol*. 2005;2(suppl 1):S4–S11.
25. Esteller M. CpG island hypermethylation and tumor suppressor genes: a booming present, a brighter future. *Oncogene*. 2002;21(35):5427.
26. Kulis M, Esteller M. DNA methylation and cancer. *Adv Genet*. 2010; 70(10):27–56.
27. Walker BA, Wardell CP, Chiecchio L, et al. Aberrant global methylation patterns affect the molecular pathogenesis and prognosis of multiple myeloma. *Blood*. 2011;117(2):553–562.
28. Flanagan J, Wilhelm-Benartzi C, Metcalf M, Kaye S, Brown R. Association of somatic DNA methylation variability with progression-free survival and toxicity in ovarian cancer patients. *Ann Oncol*. 2013;24(11): 2813–2818.
29. Hatano Y, Semi K, Hashimoto K, et al. Reducing DNA methylation suppresses colon carcinogenesis by inducing tumor cell differentiation. *Carcinogenesis*. 2015;36(7):719–729.
30. Rui-xin LI, Ting-ting YA, Yun-yun LI, et al. Effects of Hes1 in metastasis and epithelial-mesenchymal transition in cervical cancer cells. *J Int Obstet Gynecol*. 2015;42(1):112–115.
31. Wang SC, Lin XL, Wang HY, et al. Hes1 triggers epithelial-mesenchymal transition (EMT)-like cellular marker alterations and promotes invasion and metastasis of nasopharyngeal carcinoma by activating the PTEN/AKT pathway. *Oncotarget*. 2015;6(34):36713–36730.
32. Fiaschetti G, Abela L, Nonoguchi N, et al. Epigenetic silencing of miRNA-9 is associated with HES1 oncogenic activity and poor prognosis of medulloblastoma. *Br J Cancer*. 2014;110(3):636–647.
33. Li C, Cai S, Wang X, Jiang Z. Hypomethylation-associated up-regulation of TCF3 expression and recurrence in stage II and III colorectal cancer. *PLoS One*. 2014;9(11):e112005.
34. Jin H, Li T, Ding Y, et al. Methylation status of T-lymphoma invasion and metastasis 1 promoter and its overexpression in colorectal cancer. *Hum Pathol*. 2011;42(4):541–551.
35. Cortellino S, Xu J, Sannai M, et al. Thymine DNA glycosylase is essential for active DNA demethylation by linked deamination-base excision repair. *Cell*. 2011;146(1):67–79.
36. Baba Y, Noshio K, Shima K, et al. Hypomethylation of the IGF2 DMR in colorectal tumors, detected by bisulfite pyrosequencing, is associated with poor prognosis. *Gastroenterology*. 2010;139(6):1855–1864.
37. Wang Q, Zhang YN, Lin GL, et al. S100P, a potential novel prognostic marker in colorectal cancer. *Oncol Rep*. 2012;28(1):303–310.
38. Gu F, Ma Y, Zhang Z, et al. Expression of Stat3 and Notch1 is associated with cisplatin resistance in head and neck squamous cell carcinoma. *Oncol Rep*. 2010;23(3):671–676.
39. Kamakura S, Oishi K, Yoshimatsu T, Nakafuku M, Masuyama N, Gotoh Y. Hes binding to STAT3 mediates crosstalk between Notch and JAK-STAT signalling. *Nat Cell Biol*. 2004;6(6):547–554.

OncoTargets and Therapy

Publish your work in this journal

OncoTargets and Therapy is an international, peer-reviewed, open access journal focusing on the pathological basis of all cancers, potential targets for therapy and treatment protocols employed to improve the management of cancer patients. The journal also focuses on the impact of management programs and new therapeutic agents and protocols on

Submit your manuscript here: <http://www.dovepress.com/oncotargets-and-therapy-journal>

Dovepress

patient perspectives such as quality of life, adherence and satisfaction. The manuscript management system is completely online and includes a very quick and fair peer-review system, which is all easy to use. Visit <http://www.dovepress.com/testimonials.php> to read real quotes from published authors.