

Does breast density measured through population-based screening independently increase breast cancer risk in Asian females?

Boyoung Park,^{1,2} Hye Mi Cho,² Eun Hye Lee,³ Seunghoon Song,² Mina Suh,² Kui Son Choi,^{1,2} Bong Joo Kang,⁴ Kyungran Ko,⁵ Ann Yi,⁶ Hae Young Jung,⁷ Joo Hee Cha,⁸ Jae Kwan Jun^{1,2}

¹National Cancer Center Graduate School of Cancer Science and Policy, Goyang, Republic of Korea;

²National Cancer Control Institute, National Cancer Center, Goyang, Republic of Korea; ³Department of Radiology, Bucheon Hospital, Soonchunhyang University College of Medicine, Bucheon, Republic of Korea;

⁴Department of Radiology, Seoul St Mary's Hospital, Catholic University of Korea College of Medicine, Seoul, Republic of Korea;

⁵Center for Breast Cancer, National Cancer Center Hospital, National Cancer Center, Goyang, Republic of Korea;

⁶Department of Radiology, Seoul National University Hospital Healthcare System Gangnam Center, Seoul, Republic of Korea; ⁷Department of Radiology, CHA Bundang Medical Center, CHA University, Seongnam, Republic of Korea; ⁸Department of Radiology and Research Institute of Radiology, Asan Medical Center, University of Ulsan College of Medicine, Seoul, Republic of Korea

Correspondence: Jae Kwan Jun
National Cancer Control Institute,
National Cancer Center, 323 Ilsan-ro,
Ilsandong-gu, Goyang 10408, Republic of Korea
Tel +82 31 920 2184
Fax +82 31 920 2189
Email jkjun@ncc.re.kr

Purpose: The purpose of this study was to investigate the effects of breast density on breast cancer risk among women screened via a nationwide mammographic screening program.

Patients and methods: We conducted a nested case-control study for a randomly selected population of 1,561 breast cancer patients and 6,002 matched controls from the National Cancer Screening Program. Breast density was measured and recorded by two independent radiologists using the Breast Imaging Reporting and Data System (BI-RADS). Associations between BI-RADS density and breast cancer risk were evaluated according to screening results, time elapsed since receiving non-recall results, age, and menopausal status after adjusting for possible covariates.

Results: Breast cancer risk for women with extremely dense breasts was five times higher (adjusted odds ratio [aOR] =5.0; 95% confidence interval [CI] =3.7–6.7) than that for women with an almost entirely fatty breast, although the risk differed between recalled women (aOR =3.3, 95% CI =2.3–3.6) and women with non-recalled results (aOR =12.1, 95% CI =6.3–23.3, *P*-heterogeneity =0.001). aORs for BI-RADS categories of breast density were similar when subjects who developed cancer after showing non-recall findings during initial screening were grouped according to time until cancer diagnosis thereafter (<1 and ≥1 year). The prevalence of dense breasts was higher in younger women, and the association between a denser breast and breast cancer was stronger in younger women (heterogeneously dense breast: aOR =7.0, 95% CI =2.4–20.3, women in their 40s) than older women (aOR =2.5, 95% CI =1.1–6.0, women in their 70s or more). In addition, while the positive association remained, irrespective of menopausal status, the effect of a dense breast on breast cancer risk was stronger in premenopausal women.

Conclusion: This study confirmed an increased risk of breast cancer with greater breast density in Korean women which was consistent regardless of BI-RADS assessment category, time interval after initially non-recall results, and menopausal status.

Keywords: breast density, breast imaging reporting and data system, breast cancer, nationwide mammographic screening program

Introduction

On a mammogram, breast density reflects the glandular tissue composition of the breast, and several meta-analyses support considering breast density as a risk factor of breast cancer.^{1–3} Although breast density is an established risk factor for breast cancer, the extent of masking effects of breast density on tumors of the breast, which increases the likelihood of false-negative results, and the resultant effect thereof on the strength of the association are yet to be determined.^{4,5} In addition, considering that breast density tends to decrease with increasing age while breast cancer rates tend to

increase, the association between breast density and breast cancer is somewhat paradoxical. As an interpretation of this paradox, researchers have suggested a cumulative effect for breast density and increasing age, as both seem to be related with an increased incidence of breast cancer.¹ Meanwhile, however, in Asian countries, breast densities and the proportion of younger women with breast cancer are higher than in Western countries.^{6–8}

Studies of the effect of breast density on breast cancer risk have mostly been conducted for Western populations,^{2,9} for whom mammographic screening is routinely recommended as part of both organized and opportunistic screening programs. Across Asia, however, mammographic screening is not commonly conducted,¹⁰ and uptake rates for mammographic screening are low.¹¹ Moreover, only a few countries including Korea, Japan, and Taiwan offer mammographic screening as part of organized screening programs for individuals aged ≥ 40 years.^{12,13} While a few studies in Asia have aimed to assess breast density and breast cancer risk, their study populations included only individuals who underwent opportunistic screening, were of small sample sizes, and had limited representativeness.^{14–16} Thus, the effect of breast density on breast cancer risk needs to be further evaluated for Asian women.

In Korea, the National Cancer Screening Program (NCSP) provides screening services for stomach, liver, colorectal, breast, and cervical cancer. Breast cancer screening was implemented in 2002, and biennial breast cancer screening by mammography taken from craniocaudal (CC) and mediolateral oblique (MLO) views is recommended for women aged ≥ 40 years.¹⁷

Accordingly, this study was designed to investigate the effect of mammographic breast density using the American College of Radiology Breast Imaging Reporting and Data System (ACR BI-RADS),¹⁸ a standardized breast density measurement technique, on subsequent breast cancer risk in women, by assessing data from a nationwide breast cancer screening program in Korea. In addition, to identify the independent effect of breast density on breast cancer risk and the effect apart from masking bias, associations were estimated by applying the following assessment categories: time interval after initial non-recall screening results, age, breast cancer type and stage, and menopausal status.

Patients and methods

Study population

In Korea, in 2015, around 1,800,000 women aged ≥ 40 years received mammographic breast cancer screening through NCSP, with the participation rate of 46%. Between 2007 and 2009, about 1,000,000–1,427,000 women received mam-

mographic breast cancer screening with the participation rate of 30.2% in 2007, 34.9% in 2008, and 40.0% in 2009. To conduct a population-based, nested case–control study, representing all participants of the NCSP with follow-up data, a total of 86 breast cancer screening units were randomly selected after stratification by regional district and the proportion of women aged ≥ 40 years in each region, considering the sampling strategy utilized in our previous study.¹⁹ We identified all the women who underwent breast cancer screening in these units between 2007 and 2009, and who were diagnosed with ductal carcinoma in situ (DCIS) or invasive breast cancer until December 2011, through a database linkage with the Korea Central Cancer Registry, from which we also obtained information on the date of diagnosis, disease code according to the International Statistical Classification of Disease and Related Health Problems, 10th version, and stage according to Surveillance, Epidemiology, and End Results (SEER). The data utilized in this study were obtained, and were available, upon request to the National Health Insurance Service and Korea Central Cancer Registry after reviewing our study proposal, which was approved by the Institutional Review Board of the National Cancer Center, IRB number NCC2016-0162.

Thus, we found 2,522 incident breast cancer cases, including both DCIS and invasive breast cancers. For each case, four controls who underwent screening but did not develop breast cancer were randomly selected and matched for age (within 2 years), screening unit, and date of screening. All the selected 10,088 controls were confirmed as not having developed breast cancer until the end of 2011 through linkage with the Korea Central Cancer Registry.

The mammography films of these selected women were obtained from the screening units in the form of analog films or Digital Imaging and Communications in Medicine files. Among the selected women, 3,304 women (26.2%) whose social security number was missing or whose CC and MLO images of both breasts were not stored, were excluded. After we obtained the mammograms, we additionally excluded 73 individuals (0.6%) whose initial cancer diagnosis was recorded before the screening date and subjects whose film status was not re-readable. Ten women (0.1%) with breast implants were excluded as well. About 1,660 people (13.2%) were excluded due to unmatched pairs. Finally, mammograms for 1,561 incident breast cancer cases and 6,002 controls were included in this study.

Mammography reading

Mammography imaging results have been reported by the NCSP using BI-RADS since 2007. To reduce variability in

BI-RADS classification between radiologists in 86 screening units, six breast radiologists who were trained in BI-RADS classification of breast density and showed strong agreement for measurement of breast density were paired into three groups to re-assess breast density. The radiologists were blinded to case-control status and initial classification and were asked to determine the participants' BI-RADS assessment category and BI-RADS breast density classification. Each BI-RADS assessment category was classified as follows: recalled results as category 0 (inconclusive) or categories 4 and 5 (suspicious for malignancy); non-recalled results as category 1 (negative finding) or 2 (benign findings). Density classifications were characterized as almost entirely fat, scattered fibroglandular densities, heterogeneously dense, and extremely dense. If two radiologists' reviews were not consistent, they held discussions to reach an agreement thereon.

Covariates

Information on other breast cancer risk factors was obtained from self-reported questionnaires administered at the date of screening. The questionnaire surveyed age at menarche, number of live births, breast feeding duration, menopausal status, age at menopause, hormone replacement therapy use, oral contraceptive use, height, weight, and past benign breast disease. Body mass index, calculated according to height and weight, was also included as a covariate.

Statistical analysis

The characteristics of the incident breast cancer subjects and matched controls were compared using a *t*-test for age (continuous variable) and the chi-square test for other categorical variables. All *P*-values were obtained from two-tailed tests.

The effects of breast density according to BI-RADS classification on breast cancer risk were analyzed using conditional logistic regression for matched analysis (whole analysis) or logistic regression for unmatched analysis (subgroup analysis according to age group, screening results, assessment category, time interval after non-recall screening, and menopausal status), adjusting for the covariates mentioned above. Missing variables were treated as dummies. Cochran–Armitage test was applied to test for trends in associations between increased breast density and breast cancer risk. We estimated adjusted odds ratio (aOR) and 95% confidence intervals (CIs) and stratified them according to screening results category: recall (BI-RADS categories 0, 4, and 5) and non-recall (BI-RADS categories 1 and 2). To avoid masking effects, recalled cases were divided by each BI-RADS assessment category, and non-recalled cases were

divided into cases detected <1 year after initially receiving non-recall screening results and cases detected ≥1 year after initially receiving non-recall screening results. Cancer cases were divided by DCIS and invasive cancer, and invasive cancer cases were further divided by SEER stage and time after receiving non-recall screening results. In addition, the associations between breast density and breast cancer risk were evaluated according to 10-year group intervals and menopausal status (premenopause and postmenopause).

Heterogeneity in detection methods or BI-RADS assessment categories was assessed using Cochran's *Q* test.²⁰ All analyses were conducted using SAS 9.3 (SAS Institute Inc., Cary, NC, USA) and Stata/SE (ver. 12.0; StataCorp LP, College Station, TX, USA) software packages.

Results

Table 1 shows the distribution of breast cancer risk factors and breast densities according to BI-RADS for incident breast cancer cases and matched controls. Among the incident breast cancer cases, the proportions of heterogeneously or extremely dense breasts were higher ($P < 0.001$). The mean follow-up periods for breast cancer cases and controls were 178 days (range: 0–977 days) and 1,278 days (range: 740–1,817 days, data not shown), respectively.

Table 2 shows the aORs of breast cancer risk, according to BI-RADS breast density and age. Compared to women with an almost entirely fatty breast, the risk of breast cancer for those who had an extremely dense breast was five times higher (OR = 5.0; 95% CI = 3.7–6.7). The effect of increased breast density on breast cancer risk was greater in younger age groups, and the strength of the association between denser breasts and breast cancer risk decreased as age increased. The aOR for heterogeneously dense breasts, compared to entirely fatty breasts, was 7.0 (95% CI = 2.4–20.3) for women in their 40s and decreased to 2.5 (95% CI = 1.1–6.0) for women in their 70s or older. Similarly, the aOR for extremely dense breasts was 9.4 (95% CI = 3.2–27.4) for women in their 40s and decreased to 5.1 (95% CI = 2.1–12.2) for women in their 60s. No women in their 70s had extremely dense breasts.

When the effect of breast density was estimated according to menopausal status (Figure 1), breast cancer risk tended to increase as BI-RADS breast density increased in both premenopausal and postmenopausal women. The aORs of breast cancer for an extremely dense breast were 8.5 (95% CI = 1.9–36.7) in premenopausal women and 3.8 (95% CI = 2.8–5.1) in postmenopausal women.

For the recalled cases and controls, the aOR of breast cancer for women with an extremely dense breast was 3.3

Table 1 Baseline characteristics of breast density and selected risk factors of breast cancer of 1,561 pairs of breast cancer cases and matched controls

Characteristics	Incident breast cancer cases	Matched controls	P-value
Age, mean (standard deviation), years	53.0 (8.7)	53.0 (8.7)	0.97
Age at menarche, n (%)			
<13 years	163 (10.4)	470 (7.8)	<0.001
14–16 years	871 (55.8)	3258 (54.3)	
≥17 years	454 (29.1)	2113 (35.2)	
Missing	73 (4.7)	161 (2.7)	
Number of live births, n (%)			
0	106 (6.8)	271 (4.5)	<0.001
1	208 (13.3)	581 (9.7)	
≥2	1208 (77.4)	5065 (84.4)	
Missing	39 (2.5)	85 (1.4)	
Breast feeding, n (%)			
0	247 (15.8)	715 (11.9)	<0.001
<12 months	410 (26.3)	1777 (29.6)	
≥12 months	876 (56.1)	3433 (57.2)	
Missing	28 (1.8)	77 (1.3)	
Age at menopause, n (%)			
Premenopausal	369 (23.6)	1613 (26.9)	0.187
<45 years	76 (4.9)	336 (5.6)	
45–54 years	868 (55.6)	3316 (55.3)	
≥55 years	109 (7.0)	408 (6.8)	
Missing	139 (8.9)	329 (5.5)	
Hormone replacement therapy, n (%)			
Never	667 (58.2)	2935 (68.5)	0.215
Ever	169 (14.7)	660 (15.4)	
Missing	311 (27.1)	688 (16.1)	
Oral contraceptive use, n (%)			
Never	866 (55.5)	4061 (67.7)	0.053
<12 months	92 (5.9)	519 (8.6)	
≥12 months	70 (4.5)	258 (4.3)	
Missing	533 (34.1)	1164 (19.4)	
Body mass index, n (%)			
<23 kg/m ²	496 (31.8)	1951 (32.5)	0.476
23 to <25 kg/m ²	292 (18.7)	1225 (20.4)	
≥25 kg/m ²	360 (23.1)	1357 (22.6)	
Missing	413 (26.5)	1469 (24.5)	
Past history of benign breast disease, n (%)			
No	884 (56.6)	4962 (82.7)	<0.001
Yes	498 (31.9)	526 (8.8)	
I do not know	179 (11.5)	514 (8.5)	
Breast density, n (%)			
Almost entirely fat	122 (7.8)	1001 (16.7)	<0.001
Scattered fibroglandular densities	352 (22.6)	1564 (26.1)	
Heterogeneously dense	667 (42.7)	2258 (37.6)	
Extremely dense	420 (26.9)	1179 (19.6)	

(95% CI =2.3–3.6), and in women with non-recall screening results and controls, the aOR was 12.1 (95% CI =6.3–23.3, Table 3). For both recalled and non-recalled results, there was an increased trend of cancer risk with elevated BI-RADS density classification (P -trend <0.001). The risk of breast

cancer in an extremely dense breast in comparison with an almost entirely fatty breast was significantly higher for non-recalled cases, compared with recalled cases (P -heterogeneity =0.001). Among the recalled cases, the effect of breast density on breast cancer differed according to BI-RADS assessment

Table 2 Breast density as risk factor of breast cancer according to the age group^a

Density	All results			40–49 years of age			50–59 years of age			60–69 years of age			70+ years of age		
	Case/control	OR	95% CI	Case/control	OR	95% CI	Case/control	OR	95% CI	Case/control	OR	95% CI	Case/control	OR	95% CI
Almost entirely fat	122/1001	1.0		4/85	1.0		27/314	1.0		60/407	1.0		31/195	1.0	
Scattered fibroglandular densities	352/1564	2.4	1.8–3.1	56/349	4.4	1.5–13.2	143/692	2.8	1.7–4.6	113/421	2.0	1.3–2.9	40/102	2.2	1.1–4.2
Heterogeneously dense	667/2258	3.8	2.9–4.9	286/1126	7.0	2.4–20.3	265/847	4.8	2.9–7.7	96/237	2.7	1.7–4.4	20/48	2.5	1.1–6.0
Extremely dense	420/1179	5.0	3.7–6.7	277/839	9.4	3.2–27.4	128/309	6.0	3.5–10.1	15/29	5.1	2.1–12.2	0/2	–	–
P-trend			<0.001			<0.001			<0.001			<0.001			<0.001

Note: ^aORs are adjusted for age, age at menarche, number of live births, breast feeding, menopausal status/age at menopause, hormone replacement therapy use, oral contraceptive use, body mass index, past benign breast disease, and calculated by conditional logistic regression.

Abbreviations: CI, confidence interval; OR, odds ratio.

categories. Although breast cancer risk tended to increase as BI-RADS breast density increased among women with heterogeneously dense and extremely dense breasts, compared to those with an almost fatty breast, the risk of breast cancer was significantly higher for category 0 subjects than for category 4 or 5 subjects (P -heterogeneity = 0.040 and 0.003, respectively). In patients with non-recall findings on mammography, breast cancer risk also tended to increase as BI-RADS density increased, irrespective of time interval after an initial non-recall screening (<1 year and \geq 1 year); however, no heterogeneity in breast cancer risk was observed according to time interval. The effect of greater breast density on breast cancer risk remained obvious in cases detected \geq 1 year after initially receiving non-recall results. A more detailed analysis according to SEER stage is presented in Table S1.

Discussion

As a study of population-based screening, the present study is the first to investigate the effect of breast density on breast cancer risk in a large number of Asians. Herein, women with extremely dense breasts exhibited a five times higher risk of breast cancer than women with an entirely fatty breast. The independent effect of breast density on breast cancer risk remained prominent irrespective of masking effects. In addition, while there was a positive association between breast density and breast cancer risk, irrespective of age or menopausal status, the effect of a dense breast on breast cancer risk was stronger in women of younger age and in premenopausal women.

Previous studies conducted in Asia consistently showed that breast density was a significant risk factor of breast cancer,^{14–16,21} irrespective of subtypes²² and the strength of association of highest density category compared with lowest category ranged between 2.6 and 5.5.^{14,15} A study conducted in Korea also has suggested that increases of 1 standard deviation in absolute dense area and percentage dense area increase the risk of breast cancer by about 1.20-fold.¹⁶ The previous Asian results were comparable with previous meta-analysis studies in which most of the included studies were from Western population.^{2,3}

However, in contrast to previous meta-analyses, which showed that the risk of breast cancer in women of older age increases with greater breast density² or that there is no association,²³ our study discovered a stronger effect of breast density on breast cancer in younger women, which was in line with a previous study in Korea.¹⁶ In Western countries, the probability of breast cancer development increases with increasing age;²⁴ however, in Korea, breast cancer risk is highest in women aged 45–49 years.²⁵ This age-specific breast

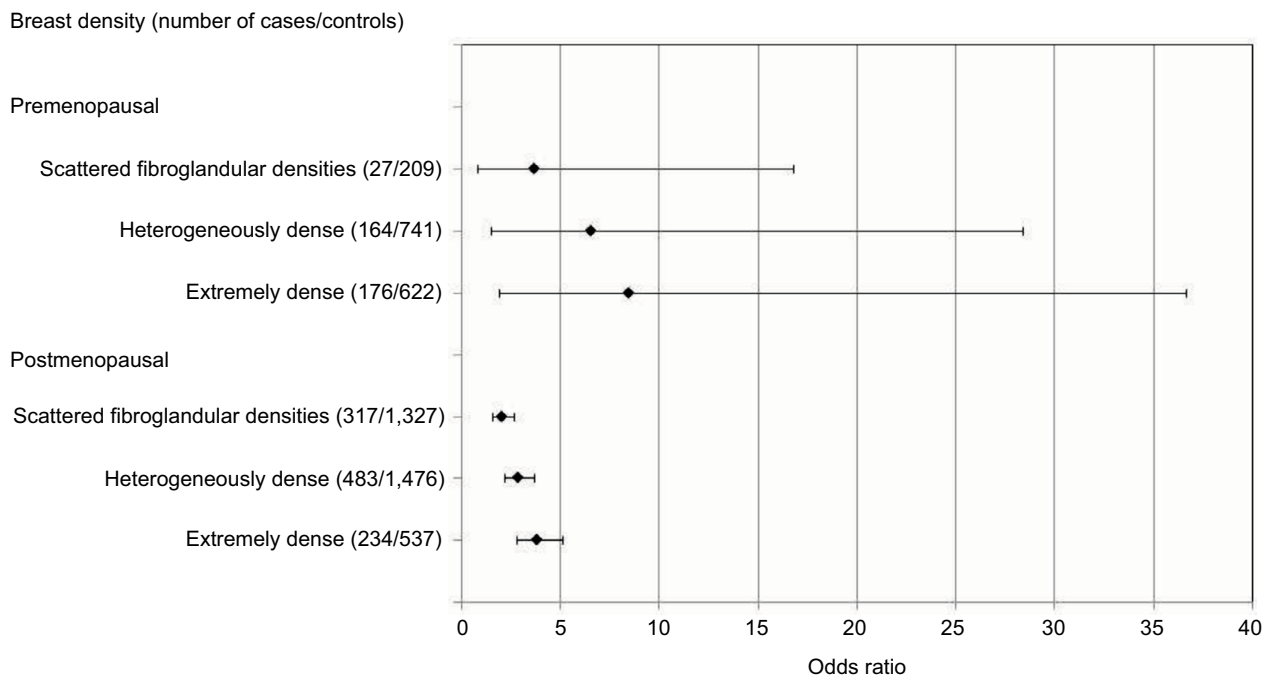


Figure 1 Breast density as risk factor of breast cancer according to menopausal status. Odds ratios are adjusted for age, age at menarche, number of live births, breast feeding, menopausal status/age at menopause, hormone replacement therapy use, oral contraceptive use, body mass index, past benign breast disease and calculated by logistic regression. In total, 139 cases and 329 controls whose menopausal status were missing were excluded from analysis.

cancer rate may have influenced the reduced effect of breast density on breast cancer risk with increasing age. Similarly, we noted a higher risk of breast cancer in premenopausal women with dense breasts than postmenopausal women. Nevertheless, while the magnitude of the OR for breast cancer was much greater in premenopausal women, *P* for heterogeneity therein did not reflect a statistically significant difference, as has been previously reported.¹⁶ Meanwhile, in Korea, the prevalence of dense breasts more rapidly decreased as age increased (from >90% in women aged <40 years to around 20% in women aged 70–79 years), compared to Western populations (from around 60% in women aged <40 years to around 20% in women aged 70–79 years).²⁶ This could explain the inconsistencies between our results and previous studies that have shown associations between dense breasts and breast cancer risk only in postmenopausal women.^{14,27}

A marked increase in breast cancer risk among women with extremely dense breasts who receive non-recall screening results, compared with recalled cases, might be partly attributable to masking bias, which refers to the masking of cancers, by a highly dense breast on mammograms, that manifest in later years.^{4,28} Several studies have estimated the risk of a dense breast on breast cancer up to 12^{2,28,29} or 24 months after non-recall screening result³⁰ could be overestimated due to masking effect. In this study, due to the short follow-up time in breast cancer cases (maximum period from

screening and cancer detection was 2.7 years), we could not assess the long-term breast cancer risk in relation to breast density. Notwithstanding, even in BI-RADS category 4 or 5, the risk of breast cancer increased as density increased, suggesting that the risk associated with breast density would be independent. Nevertheless, the strength of this association might be affected by masking effects, which caused more missed cases in females with dense breasts. We also identified a greater increase in the risk of breast cancer in women with a dense breast diagnosed within 1 year after a non-recalled screening result, compared to women diagnosed after 1 year of receiving non-recalled results. While this also suggests the presence of masking effects, the risk after 12 months was greater than that reported in previous studies.^{2,29} To better address the effect of masking bias on cancer risk, the invasive breast cancer cases were divided by stage (Table S1). For advanced cases, a portion of missing cases due to masking effect would have remained for those diagnosed ≥ 1 year after initially receiving non-recalled results. However, this would be minimized in early stage breast cancer cases (localized breast cancer). In our study, ORs for breast cancer were high in localized breast cancer cases diagnosed at ≥ 1 year after initially receiving non-recalled results. Thus, we suggest that, despite a certain degree of masking bias, which was more prominent in early stages, the independent risk of breast density on breast cancer apart from masking effects is prominent.

Table 3 Breast density as risk factor of breast cancer according to screening results, assessment category, and time interval after non-recall screening^a

Assessment categories	Density			Almost entirely fat			Scattered fibroglandular densities			Heterogeneously dense			Extremely dense			P-trend
	Case/control	OR	95% CI	Case/control	OR	95% CI	Case/control	OR	95% CI	Case/control	OR	95% CI	Case/control	OR	95% CI	
Recall ^b	102/763	1.0	1.7-3.0	277/1162	2.2	1.7-3.0	462/1421	3.6	2.6-4.8	224/760	3.3	2.3-4.6	224/760	3.3	2.3-4.6	<0.001
Categories 4 and 5 (N=402 pairs)	60/351	1.0	1.3-2.9	114/423	2.0	1.3-2.9	153/462	2.6	1.7-4.0	75/316	1.8	1.1-3.1	75/316	1.8	1.1-3.1	0.030
Category 0 (N=663 pairs)	42/412	1.0	1.9-4.3	163/739	2.9	1.9-4.3	309/959	4.9	3.2-7.6	149/444	5.2	3.2-8.4	149/444	5.2	3.2-8.4	<0.001
P-heterogeneity					0.203			0.040			0.003			0.003		
Non-recall ^c	20/238	1.0	1.6-5.5	75/402	3.0	1.6-5.5	205/837	5.2	2.8-9.8	196/419	12.1	6.3-23.3	196/419	12.1	6.3-23.3	<0.001
Diagnosis <1 year after screening (N=312 pairs)	14/158	1.0	1.5-7.1	42/245	3.3	1.5-7.1	121/529	5.4	2.5-11.9	135/267	16.7	7.3-38.5	135/267	16.7	7.3-38.5	<0.001
Diagnosis ≥1 year after screening (N=184 pairs)	6/80	1.0	1.2-11.1	33/157	3.6	1.2-11.1	84/308	7.6	2.4-24.2	61/152	12.1	3.7-39.6	61/152	12.1	3.7-39.6	<0.001
P-heterogeneity					0.900			0.631			0.663			0.663		
P-heterogeneity ^d					0.371			0.301			0.001			0.001		

Notes: ^aORs are adjusted for age at menarche, number of live births, breast feeding, menopausal status/age at menopause, hormone replacement therapy use, oral contraceptive use, body mass index, past benign breast disease and calculated by conditional logistic regression. ^bIncluding BI-RADS categories 4 and 5 (suspicious for malignancy) and 0 (need additional imaging or prior examinations). ^cIncluding BI-RADS categories 1 (negative) and 2 (benign). ^dheterogeneity between recalled cases and non-recalled cases.

Abbreviations: BI-RADS, Breast Imaging Reporting and Data System; CI, confidence interval; OR, odds ratio.

Methods of breast density measurement include qualitative and quantitative approaches, among which percentage density shows the strongest association with cancer risk.^{2,3} Measuring breast density with quantitative methods intuitively leads to classifying density results into <5%, 5%–24%, 25%–49%, 50%–74%, and $\geq 75\%$ ² to achieve clinical meaning and to facilitate interpretation of results. However, considering that film mammography has been recommended as a standard screening method for the past few decades, classifying breast density according to BI-RADS classification might be more practical for risk identification in screening settings. Also, good correlation between automated quantitative volumetric assessment and BI-RADS visual density categories has been reported.^{31,32} Our results using BI-RADS classification were comparable to results in both meta-analyses using BI-RADS classification and those using percent densities (<5% compared to $\geq 75\%$).²

Several limitations to this study warrant consideration. First, the follow-up period was short (maximum 2.7 years), and thus, it was impossible to identify interval breast cancers or the long-term effects of breast density on cancer risk. In addition, our criterion for the follow-up time of non-recalled results (1 year) might not be enough to exclude overlooked cancers at the time of screening, resulting in overestimation of the breast density effect.⁹ However, when we divided the results by 1.5 and 2 years after receiving non-recalled results, the results were not much different (data not shown). About 26% of the participants whose social security number was missing or whose image of both breasts were not stored were excluded. In such instances, comparing baseline characteristics between excluded people and included people is a commonly applied method to identify the presence of selection bias.³³ However, we could not compare them because of a lack of information. Third, information on possible confounding variables was self-reported, and thus would introduce information bias. However, the bias would be non-differential and give us outcomes that are more conservative. Fourth, some of the major confounders that affect both breast cancer and mammographic density, such as age at first birth, type of hormone replacement therapy, or oral contraceptive use, could not be considered in this study because they were not included in the questionnaires. In addition, some of the covariates, such as body mass index, hormone replacement therapy, or oral contraceptive use, had a high proportion of missing data. To keep the number of the study population high in the multivariate analysis, we treated these covariates as missing variables, although this might cause biased results, considering the differences in

the proportions of missing data between cases and controls. Fifth, due to the small number of younger women with an almost entirely fatty breast (reference group) and too few older women with an extremely dense breast, the confidence intervals of the subgroup analysis were wide, despite the observed statistical significance.

Conclusion

This study confirmed an increased risk of breast cancer in association with breast density measured by BI-RADS classification in an East Asian population. The increased risk was consistent irrespective of the screening results (recalled cases and non-recalled cases), BI-RADS assessment category, and follow-up period after non-recalled results, suggesting an independent effect of breast density on subsequent cancer development. However, a larger number of overlooked cancers may have been present in women with dense breasts, and a greater breast density was observed in younger women.

Acknowledgment

This study was funded by the National Cancer Center, Korea (number 1610402) and Basic Science Research Program through the National Research Foundation of Korea (NRF) funded by the Ministry of Science, ICT and Future Planning (NRF-2016R1C1B1013621).

Disclosure

The authors report no conflicts of interest in this work.

References

1. Boyd NF, Martin LJ, Yaffe MJ, Minkin S. Mammographic density and breast cancer risk: current understanding and future prospects. *Breast Cancer Res.* 2011;13:223.
2. McCormack VA, dos Santos Silva I. Breast density and parenchymal patterns as markers of breast cancer risk: a meta-analysis. *Cancer Epidemiol Biomarkers Prev.* 2006;15:1159–1169.
3. Pettersson A, Graff RE, Ursin G, et al. Mammographic density phenotypes and risk of breast cancer: a meta-analysis. *J Natl Cancer Inst.* 2014;106(5):pii:dju078.
4. Colin C, Prince V, Valette PJ. Can mammographic assessments lead to consider density as a risk factor for breast cancer? *Eur J Radiol.* 2013;82:404–411.
5. van der Waal D, Ripping TM, Verbeek AL, Broeders MJ. Breast cancer screening effect across breast density strata: a case-control study. *Int J Cancer.* 2016;140(1):41–49.
6. Fan L, Zheng Y, Yu K-D, et al. Breast cancer in a transitional society over 18 years: trends and present status in Shanghai, China. *Breast Cancer Res Treat.* 2009;117:409–416.
7. Han J-g, Jiang Y-d, Zhang C-h, et al. Clinicopathologic characteristics and prognosis of young patients with breast cancer. *Breast.* 2011;20:370–372.
8. Li J, Zhang B-N, Fan J-H, et al. A nation-wide multicenter 10-year (1999-2008) retrospective clinical epidemiological study of female breast cancer in China. *BMC Cancer.* 2011;11:364.

9. Vachon CM, Van Gils CH, Sellers TA, et al. Mammographic density, breast cancer risk and risk prediction. *Breast Cancer Res.* 2007;9:217.
10. Bhoo-Pathy N, Yip CH, Hartman M, et al. Breast cancer research in Asia: adopt or adapt Western knowledge? *Eur J Cancer.* 2013;49:703–709.
11. Saika K, Sobue T. Time trends in breast cancer screening rates in the OECD countries. *Jpn J Clin Oncol.* 2011;41:591–592.
12. Lee EH, Park B, Kim N-S, et al. The Korean guideline for breast cancer screening. *J Korean Med Assoc.* 2015;58:408–419.
13. Hamashima C, Hamashima CC, Hattori M, et al. The Japanese guidelines for breast cancer screening. *Jpn J Clin Oncol.* 2016;46:482–492.
14. Wong C, Lim G, Gao F, et al. Mammographic density and its interaction with other breast cancer risk factors in an Asian population. *Br J Cancer.* 2011;104:871–874.
15. Jakes RW, Duffy SW, Ng FC, Gao F, Ng EH. Mammographic parenchymal patterns and risk of breast cancer at and after a prevalence screen in Singaporean women. *Int J Epidemiol.* 2000;29:11–19.
16. Kim B-K, Choi Y-H, Nguyen TL, et al. Mammographic density and risk of breast cancer in Korean women. *Eur J Cancer Prev.* 2015;24(5):422–429.
17. Suh M, Choi KS, Park B, et al. Trends in Cancer Screening Rates among Korean Men and Women: Results of the Korean National Cancer Screening Survey, 2004–2013. *Cancer Res Treat.* 2016;48:1–10.
18. American College of Radiology. *ACR BI-RADS® Breast Imaging Reporting and Data System, Breast Imaging Atlas, Mammography.* 4th ed. Preston, VA: American College of Radiology; 2003.
19. Jun JK, Kim MJ, Choi KS, Suh M, Jung KW. Development of a sampling strategy and sample size calculation to estimate the distribution of mammographic breast density in Korean women. *Asian Pac J Cancer Prev.* 2012;13:4661–4664.
20. Higgins JP, Thompson SG, Deeks JJ, Altman DG. Measuring inconsistency in meta-analyses. *BMJ.* 2003;327:557.
21. Nguyen TL, Choi YH, Aung YK, et al. Breast Cancer Risk Associations with digital mammographic density by pixel brightness threshold and mammographic system. *Radiology.* 2017 Epub Oct 16.
22. Shin J, Lee JE, Ko HY, et al. Association between mammographic density and tumor marker-defined breast cancer subtypes: a case-control study. *Eur J Cancer Prev.* 2017 Epub Sep 27.
23. Razzaghi H, Troester MA, Gierach GL, et al. Mammographic density and breast cancer risk in White and African American Women. *Breast Cancer Res Treat.* 2012;135:571–580.
24. Boyd NF, Rommens JM, Vogt K, et al. Mammographic breast density as an intermediate phenotype for breast cancer. *Lancet Oncol.* 2005;6:798–808.
25. Jung KW, Won YJ, Oh CM, et al. Cancer statistics in Korea: incidence, mortality, survival, and prevalence in 2014. *Cancer Res Treat.* 2017;49:292–305.
26. Youn I, Choi S, Kook SH, Choi YJ. Mammographic breast density evaluation in Korean women using fully automated volumetric assessment. *J Korean Med Sci.* 2016;31:457–462.
27. Nagata C, Matsubara T, Fujita H, et al. Mammographic density and the risk of breast cancer in Japanese women. *Br J Cancer.* 2005;92:2102–2106.
28. van Gils CH, Otten JD, Verbeek AL, Hendriks JH. Mammographic breast density and risk of breast cancer: masking bias or causality? *Eur J Epidemiol.* 1998;14:315–320.
29. Boyd NF, Guo H, Martin LJ, et al. Mammographic density and the risk and detection of breast cancer. *N Engl J Med.* 2007;356:227–236.
30. Yaghjian L, Colditz GA, Rosner B, Tamimi RM. Mammographic breast density and subsequent risk of breast cancer in postmenopausal women according to the time since the mammogram. *Cancer Epidemiol Biomarkers Prev.* 2013;22:1110–1117.
31. Gweon HM, Youk JH, Kim JA, Son EJ. Radiologist assessment of breast density by BI-RADS categories versus fully automated volumetric assessment. *AJR Am J Roentgenol.* 2013;201:692–697.
32. Seo JM, Ko ES, Han BK, Ko EY, Shin JH, Hahn SY. Automated volumetric breast density estimation: a comparison with visual assessment. *Clin Radiol.* 2013;68:690–695.
33. Gordis L. *Epidemiology.* 5th ed. Philadelphia, PA: Elsevier Saunders; 2013.
34. Melnikow J, Fenton JJ, Whitlock EP, et al. Supplemental screening for breast cancer in women with dense breasts: a systematic review for the US Preventive Services Task Force. *Ann Intern Med.* 2016;164(4):268–278.

Supplementary material

Table S1 Breast density as risk factor of breast cancer according to results of screening, time interval after negative screening, type of breast cancer, and Surveillance, Epidemiology, and End Results stage^a

Assessment categories	Density	Almost entirely fat	Scattered fibroglandular densities	Heterogeneously dense	Extremely dense	P-trend
	OR	OR (95% CI)	OR (95% CI)	OR (95% CI)	OR (95% CI)	
Invasive breast cancer						
All (N=1,332 pairs)	1.0	2.2 (1.7–2.9)	2.3 (2.6–4.5)	4.6 (3.3–6.2)	<0.001	
Recall ^b (N=933 pairs)	1.0	2.0 (1.5–2.7)	3.1 (2.3–4.2)	2.8 (1.9–4.0)	<0.001	
Categories 4 and 5 (N=375 pairs)	1.0	1.8 (1.2–2.7)	2.3 (1.5–3.6)	1.7 (1.0–2.9)	0.058	
Category 0 (N=558 pairs)	1.0	2.6 (1.7–4.0)	4.2 (2.7–6.6)	4.3 (2.6–7.1)	<0.001	
Non-recall ^c (N=399 pairs)	1.0	3.3 (2.8–12.1)	5.8 (2.8–12.1)	15.5 (7.3–33.2)	<0.001	
Diagnosis <1 year after screening (N=253 pairs)	1.0	3.5 (1.4–8.8)	6.8 (2.7–16.9)	25.0 (9.4–66.3)	<0.001	
Diagnosis ≥1 year after screening (N=146 pairs)	1.0	4.5 (1.2–16.8)	8.0 (2.1–31.0)	13.5 (3.3–54.7)	0.001	
Localized breast cancer						
All (N=733)	1.0	2.1 (1.5–3.1)	3.1 (2.1–4.4)	5.7 (3.8–8.7)	<0.001	
Recall ^b (N=500 pairs)	1.0	1.9 (1.3–2.9)	2.7 (1.8–4.1)	3.1 (1.9–5.0)	<0.001	
Categories 4 and 5 (N=186 pairs)	1.0	1.5 (0.9–2.7)	2.1 (1.1–3.9)	1.5 (0.7–3.2)	0.102	
Category 0 (N=314 pairs)	1.0	2.7 (1.5–4.8)	3.8 (2.1–7.0)	5.7 (2.9–11.4)	<0.001	
Non-recall ^c (N=233 pairs)	1.0	3.5 (1.3–9.4)	6.5 (2.3–18.3)	28.5 (9.6–84.3)	<0.001	
Diagnosis <1 year after screening (N=156 pairs)	1.0	4.1 (1.1–14.9)	10.4 (2.6–40.9)	42.6 (10.3–175.6)	<0.001	
Diagnosis ≥1 year after screening (N=77 pairs)	1.0	4.5 (0.6–33.5)	5.2 (0.7–37.8)	32.5 (3.8–280.7)	<0.001	
Regional/distant^d breast cancer						
All (N=479)	1.0	2.1 (1.3–3.4)	3.8 (2.3–7.1)	3.5 (2.0–5.9)	<0.001	
Recall ^b (N=348 pairs)	1.0	2.0 (1.8–3.3)	3.4 (2.0–5.8)	2.9 (1.6–5.3)	<0.001	
Categories 4 and 5 (N=151 pairs)	1.0	1.9 (0.9–3.8)	2.1 (1.0–4.5)	1.6 (0.6–4.0)	0.125	
Category 0 (N=197 pairs)	1.0	2.7 (1.0–4.9)	5.6 (2.5–12.8)	4.4 (1.8–10.6)	<0.001	
Non-recall ^c (N=131 pairs)	1.0	3.1 (0.9–10.5)	5.7 (1.7–18.8)	6.0 (1.7–21.4)	0.001	
Diagnosis <1 year after screening (N=75 pairs)	1.0	3.0 (0.6–14.9)	3.3 (0.8–14.9)	7.9 (1.5–43.1)	0.002	
Diagnosis ≥1 year after screening (N=56 pairs)	1.0	13.7 (0.9–200.2)	89.6 (4.9–999.9)	24.4 (1.5–389.9)	0.100	
Ductal carcinoma in situ						
All (N=229 pairs)	1.0	4.9 (2.1–11.9)	11.2 (4.5–28.1)	13.9 (5.3–36.8)	<0.001	
Recall ^b (N=132 pairs)	1.0	9.4 (2.6–34.26)	28.3 (7.1–112.8)	33.2 (7.6–144.7)	<0.001	
Non-recall ^c (N=97 pairs)	1.0	2.1 (0.6–7.9)	4.1 (1.1–15.8)	6.0 (1.5–24.8)	0.001	

Notes: ^aORs are adjusted for age, age at menarche, number of live births, breast feeding, menopausal status/age at menopause, hormone replacement therapy use, oral contraceptive use, body mass index, past benign breast disease and calculated by conditional logistic regression. ^bIncluding BI-RADS categories 4 and 5 (suspicious for malignancy) and 0 (need additional imaging or prior examinations). ^cIncluding BI-RADS categories 1 (negative) and 2 (benign). ^dOnly 40 were distant breast cancer cases.

Abbreviations: BI-RADS, Breast Imaging Reporting and Data System; CI, confidence interval; OR, odds ratio.

Clinical Epidemiology

Publish your work in this journal

Clinical Epidemiology is an international, peer-reviewed, open access, online journal focusing on disease and drug epidemiology, identification of risk factors and screening procedures to develop optimal preventative initiatives and programs. Specific topics include: diagnosis, prognosis, treatment, screening, prevention, risk factor modification,

Submit your manuscript here: <https://www.dovepress.com/clinical-epidemiology-journal>

systematic reviews, risk and safety of medical interventions, epidemiology and biostatistical methods, and evaluation of guidelines, translational medicine, health policies and economic evaluations. The manuscript management system is completely online and includes a very quick and fair peer-review system, which is all easy to use.

Dovepress