

# Evaluating psychiatric readmissions in the emergency department of a large public hospital

David W Morris<sup>1</sup>  
Subroto Ghose<sup>1,2</sup>  
Ella Williams<sup>1,2</sup>  
Kevin Brown<sup>1,2</sup>  
Fuad Khan<sup>1,2</sup>

<sup>1</sup>Department of Psychiatry, The University of Texas Southwestern Medical Center, Dallas, TX, USA;

<sup>2</sup>Department of Psychiatry, Parkland Memorial Hospital, Dallas, TX, USA

**Introduction:** Hospital emergency departments (EDs) around the country are being challenged by an ever-increasing volume of patients seeking psychiatric services. This manuscript describes a study performed to identify internal and external factors contributing to repeated psychiatric patient admissions to the hospital main ED.

**Methods:** Data from ED visits of patients who were admitted to the Parkland Memorial Hospital ED (the community hospital for Dallas County, TX, USA) with a psychiatric complaint more than once within a 30-day period were evaluated (n=202). A 50-item readmission survey was used to collect information on demographic and clinical factors associated with 30-day readmission, as well as to identify quality improvement opportunities by assessing related moderating factors. An analysis of acute readmission visits (occurring within 3 days of previous discharge) was also performed.

**Results:** Patients readmitted to the ED commonly present with a combination of acute psychiatric symptoms, substance use (especially in the case of acute readmission), and violent or suicidal behavior. The vast majority of cases reviewed found that readmitted patients had difficulties coordinating care outside the ED. A number of moderating factors were identified and targeted for quality improvement including additional support for filling prescriptions, transportation, communication with family and outside providers, drug and alcohol treatment, intensive case management, and housing.

**Conclusion:** Many of the resources necessary to reduce psychiatric patient visits to hospital EDs are available within the community. There is no formal method of integrating and insuring the continuity of community services that may reduce the demand for psychiatric and related services in the ED. While agreements between community service providers may be challenging and require considerable vigilance to maintain equitable agreements between parties, this route of improving efficiency may be the only available method, given the current and projected patient care needs.

**Keywords:** chronic mental illness, psychiatric readmission, emergency psychiatry, public mental health

## Plain language summary

Over the last 20 years, there has been a steady increase in the number of patients being treated for mental health problems (including alcohol and drug use) in hospital emergency departments (EDs). This article describes a project undertaken at one of the busiest hospitals in the country to better understand the reasons patients keep returning to the ED at the hospital for acute mental health and substance treatment rather than receiving long-term treatment in the community. Records from 202 patients who had been admitted to the ED for a mental health or substance use problem and returned within 30 days were reviewed to find factors that may have been associated with the readmission. The results indicated that, while resources necessary to reduce psychiatric patient visits were often available within the community, patients had difficulties

Correspondence: Fuad Khan  
Behavioral Health, Wentworth-Douglass  
Hospital, 789 Central Avenue  
Dover, NH 03820, USA  
Tel +1 603 609 6161 ext 4975  
Fax +1 603 742 4605  
Email fuad.khan@wdhospital.com

following through with treatment after they leave the ED. Finally, a number of steps to improve patients' accessibility to care are outlined in the paper.

## Introduction

Providing care for patients with mental health conditions is a global concern. In the USA alone, at any given time, a quarter of the population has a diagnosable mental health or substance use disorder, of which 60% are classified as moderate to serious in severity.<sup>1–5</sup> By 2020, psychiatric disorders are projected to be the second leading cause of disability in both the years of potential life lost due to premature mortality and the years of productive life lost due to disability (disability adjusted life years).<sup>6–9</sup>

Changes in the health care infrastructure have resulted in a reduction in available long- and short-term mental health and substance use services. During the last 20 years, there has been a steady increase in the volume of patients seeking mental health services in hospital emergency departments (EDs), to the point that these patients represent the most rapidly growing component of ED treatment.<sup>10–14</sup> EDs have become the first line of treatment for many patients seeking mental health services. It is estimated that >40% of patients in the ED have a diagnosable mental health or substance use disorder, and over 5% of all visits are for psychiatric reasons alone.<sup>15,16</sup> Psychiatric patient visits to the Parkland Memorial Hospital (PMH) ED have reflected this trend and are currently at an historical high point.

In response to the considerable demand, diverse models of specialized emergency psychiatry services have evolved—ranging from solo consultants in medical EDs to large, comprehensive crisis mental health facilities. PMH relies on a combination of models to serve the psychiatric needs of the community, with a psychiatry emergency department (PED) that operates separately from the medical ED, psychiatric specialists consulting in the ED, and a consult–liaison service to provide support for all service lines in the hospital. Within the catchment area, Dallas County (TX, USA), PMH is the “safety net” public hospital and provides care to all those who present for treatment regardless of their insurance status and ability to pay for services. There are several other specialized facilities equipped to deal with patient in acute psychiatric distress, as well as limited residential psychiatric and drug treatment facilities available within the community. For a variety of reasons, PMH is often the first treatment facility visited by patients, care givers, and authorities, seeking psychiatric evaluation and treatment. While there is community outpatient psychiatric treatment available, some patients

choose to visit the PMH ED for concerns that could be more effectively addressed in a nonacute care setting.

The PMH ED has ~15,000 psychiatric patient contacts per month. During the 12-month period, from September 2015 through August 2016, ~12% (1,800) of the psychiatric patient contacts were “readmission” visits, defined as  $\geq 2$  mental health–related admissions to the PMH ED (including those related to substance use) occurring within a 30-day period. In addition, the number of psychiatric contacts in the ED is steadily increasing, many of which will likely be avoidable readmission visits that could be managed more cost-effectively and appropriately at a less acute level of care in the community.

The goal of the project was to develop a better understanding of factors contributing to psychiatric patient readmissions in the ED, to identify those areas where improvements may be made, and to develop action plans to address those quality improvement opportunities.

## Methods

This manuscript details the result of a continuous quality improvement project designed and developed as a collaborative effort between the University of Texas Southwestern Medical Center (UTSW) and PMH. The project was approved by the UTSW Institutional Review Board and determined to be a performance improvement project, not requiring patient consent for chart review. The patient data used in the study were de-identified and securely stored in an independent database on the UTSW server. The purpose of the project was to provide PMH guidance in optimizing the benefit of patient care provided by gaining a better understanding of clinical, community, and patient issues related to psychiatric readmission visits in the ED. The plan–do–study–act (PDSA) cycle was used as a model to guide the quality improvement process.<sup>17</sup> The first steps, as described in this manuscript, are as follows: 1) setting aims by identifying areas for improvement and identifying the target population; 2) measuring changes that may lead to improvement; and 3) identifying the changes mostly likely to result in improvement. The final step, implementing and testing changes, is currently underway and is designed to be an ongoing process of planning, implementing, observing (continued measurement), and adjusting actions based upon the knowledge gained.

## Subjects

The study included patients who were admitted to the PMH ED with a psychiatric complaint  $\geq 2$  times within a 30-day

period from September 2015 to August 2016 (patients who were admitted for a medical condition and later found to have a psychiatric complaint were also included in the sample). Patients who left the hospital against medical advice were not included in the study.

## Materials

Based upon the current literature and the clinical experience of a collaborative multidisciplinary team of physicians, psychologists, nurses, social workers, and staff from UTSW and PMH created a chart review survey designed to capture relevant variables related to psychiatric patient readmission.<sup>18–30</sup> The Parkland Readmission Survey (PRS) is a 50-item assessment designed to review readmission visits in the ED. The PRS captures demographic information (age, race, gender, ethnicity, employment and housing status, income source, and medical funding source), clinical features related to the readmission visit (medical and/or psychiatric complaint, specific psychiatric complaint and diagnosis from previous and current visit, and the presence/absence of an unresolved medical or psychiatric condition from previous visit), and treatment information (the number of times the patient was seen in any hospital in the last 30 days, the number of days since last admission for a psychiatric condition, and ability to follow medical and psychiatric treatment recommendations). In the final section of the PRS, using a fully anchored 4-point Likert scale (strongly agree, agree, disagree, and strongly disagree), reviewers rated 10 factors that were believed to be associated with the 30-day psychiatric patient readmission visits in the PMH ED. These factors were identified by consensus agreement among members of the multidisciplinary team developing the scale. A copy of the PRS is provided as [Supplementary material](#).

Prior to deploying the PRS, standard assessment procedures were implemented. Specifically, the survey was beta-tested (3 trials over a 3-month period); during that time, the assessment was revised to improve performance. The objective items, such as demographics and clinical features, were revised to include instructions for the specific location of items within the medical record (eg, final diagnosis located in the discharge plan section of the chart). Raters were provided additional instruction in rating the subjective items (eg, rate based on all information contained in the chart, including social work and nursing specific notes). On the final trial, all objective items were in agreement, and there was no discordance between raters found in response to the subjective items (ie, differences in magnitude, but not in valence were present, meaning that differences such as

strongly agree vs agree were present, but differences such as agree vs disagree were not found).

## Procedures

The PRS was put into the Research Electronic Data Capture system for the purpose of data entry and analyzed using the Statistical Package for the Social Sciences (IBM Corporation, Armonk, NY, USA).<sup>31,32</sup> After 3 months of beta-testing, the assessment was finalized. The raters were 5 UTSW psychiatrists working at PMH as full-time or part-time providers in the PED who completed the PRS during protected administrative time. The raters were not directly involved in care provided during visits under review (although they may have been involved in care during a different visit). Each month, cases, from the prior month, were randomly selected for inclusion in the study. Figure 1 details the flow of cases from random selection through assignment to reviewer.

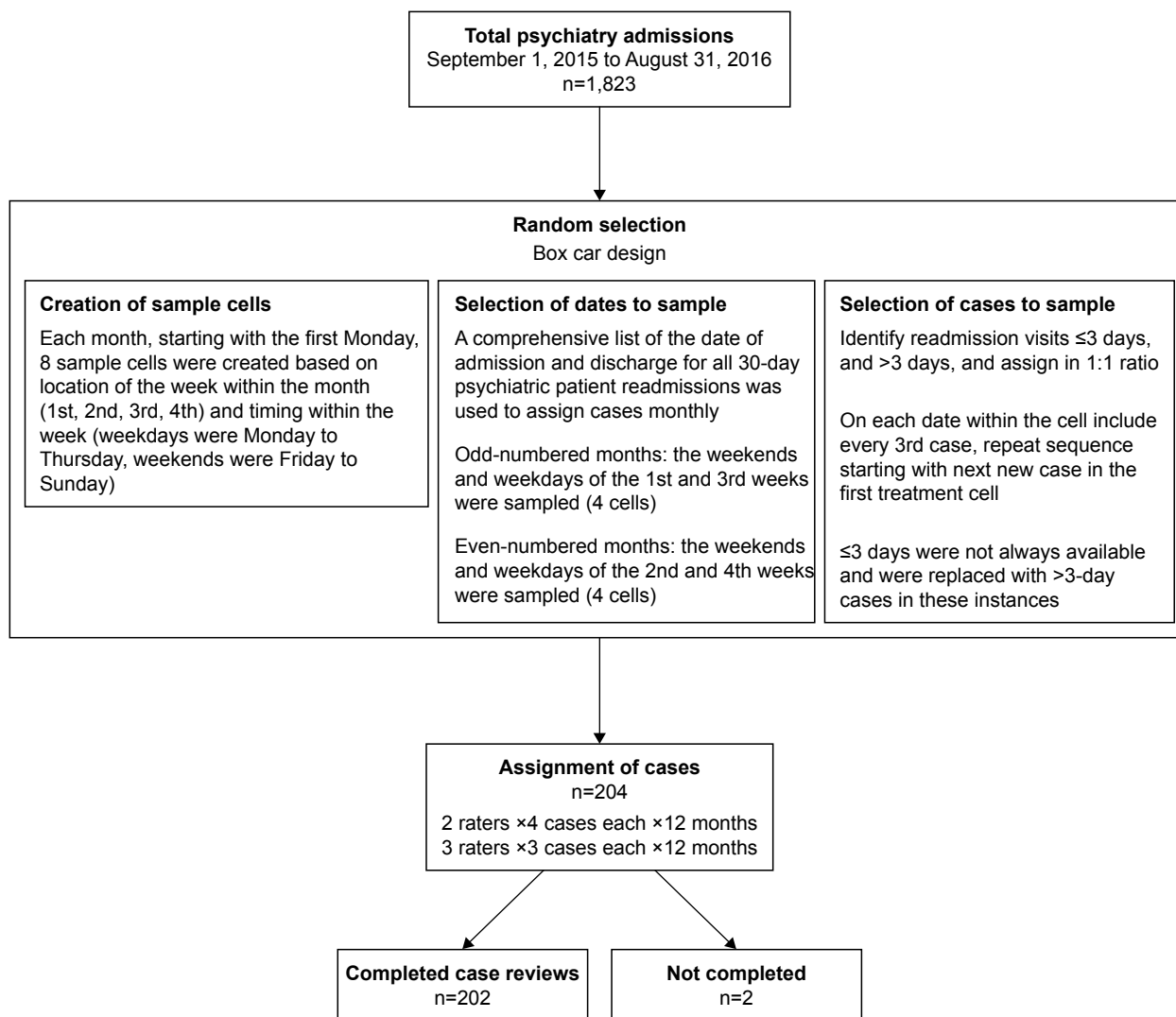
## Analysis

A descriptive analysis provides details regarding the total sample across 3 domains: demographics, treatment factors, and identifiable problems, as well as information regarding the reviewer's impression of strategies that may help prevent future readmissions. In addition, a more granular secondary analysis was undertaken to identify independent factors that may be associated with acute readmission ( $\leq 3$  days,  $\leq 72$  hours). The aim of the secondary analysis was to determine whether rapid returns to the ED ( $< 3$  days) were associated with different clinical and patient factors than the less acute readmissions (4–30 days). In order to obtain an adequate sample of acute readmissions ( $\leq 3$  days), the sample was stratified at a ratio of 1:1 based upon time from last admission ( $\leq 3$  days,  $> 3$  days). Between-group differences ( $\leq 3$  day, 4–30 days) were evaluated by using a Yates corrected  $\chi^2$  analyses for nonparametric variables, and the analysis of variance was used to examine the parametric data ( $p < 0.05$ ). The selection of sample size was pragmatic in that 200 cases provided adequate power for limited clinical, demographic, treatment subgroup analysis and was large enough to be representative of the total population.

## Results

### Demographics

The sample consisted of 202 patients with 30-day readmission visits and data were collected over a 12-month period from September 2015 to August 2016. The average age of patients with the ED readmission was 40 years, and the patients had 11 years of formal education. The sample was



**Figure 1** Patient flow.

**Note:** Admissions to the emergency department of the Parkland Memorial Hospital with a psychiatric complaint  $\geq 2$  times within a 30-day period from September 2015 to August 2016.

80% male, was 10% Hispanic, and predominately composed of patients self-identified as African American (45%) or Caucasian (43%). The majority of patients included in the evaluation were homeless (63%) and not employed (87%) with limited (35% received disability benefits) or no source of income (46%). The secondary analysis found no statistically significant differences in demographic factors between patients who were readmitted within 3 days and those who were readmitted after 3 days (see Table 1 for complete demographic information).

The results indicate that the majority of the patients (72%) were readmitted for the same problem seen in the previous visit and that these patients had difficulty following the treatment recommendations and difficulty accessing community resources. The secondary analysis found no

statistically significant between-group differences in evidence (see Table 2 to review treatment factors).

The reviews identified a number of factors that may have contributed to the readmission visit. For a variety of reasons, many patients experienced a breakdown in the continuity of care after leaving the hospital, specifically with outpatient follow-up care (43%), using referrals (56%), and obtaining and taking prescribed medication (41%). Problems related to housing (63%) and transportation (14%) were also found. No statistically significant between-group differences were found in the secondary analysis (Table 3).

## Treatment factors

Initial complaints in patients were identified in the 202 visits reviewed. Three major areas were found to be present in half

**Table 1** Demographics

	Days between admissions		
	Total (n=202)	≤3 (n=93)	>3 (n=109)
Age, years (mean ± SD)	40.0 (11.9)	38.7 (10.3)	40.4 (12.9)
Education, years (mean ± SD)	11.1 (2.4)	11.0 (2.5)	11.3 (2.3)
Gender (male)	162 (80%)	76 (82%)	86 (79%)
Race			
American Indian or Native Alaskan	14 (7%)	9 (10%)	5 (5%)
Asian	1 (1%)	0 (0%)	1 (1%)
Black or African American	91 (45%)	40 (43%)	51 (47%)
Native Hawaiian or other Pacific Islander	0 (0%)	0 (0%)	0 (0%)
White	87 (43%)	41 (44%)	46 (42%)
Other	8 (4%)	3 (3%)	5 (5%)
Ethnicity			
Hispanic	20 (10%)	9 (10%)	11 (10%)
Non-Hispanic	182 (90%)	84 (90%)	98 (90%)
Employment status			
Not employed	175 (87%)	81 (87%)	94 (86%)
Full-time employment	1 (1%)	0 (0%)	1 (1%)
Part-time employment	16 (8%)	6 (6%)	10 (9%)
Income source			
No income source	93 (46%)	48 (52%)	45 (41%)
SSI/SSDI and other disability	72 (35%)	32 (34%)	40 (37%)
Family support	9 (4%)	2 (2%)	7 (6%)
Other	21 (10%)	7 (8%)	14 (13%)

**Notes:** Random sample of 30-day psychiatric patient readmissions in the emergency department over a 12-month period, September 2015 to August 2016. Patients may have multiple listings for race and income source. Employment status was not released by all the patients.

**Abbreviations:** SSDI, Social Security Disability Insurance; SSI, Supplemental Security Income.

of the sample (psychiatric symptoms, substance use, and violent/suicidal behavior). An additional 13% presented for a medical complaint and were later found to have a comorbid psychiatric issue that needed to be addressed. Six percent of the visits were found to be unnecessary, meaning that the visit was to meet a physical need (eg, housing and transportation) in the absence of an acute psychiatric condition that required treatment. The secondary analysis found statistically significant differences between patients who were readmitted within 3 days and those who were readmitted after 3 days, with the former reporting significantly higher rates of substance use (Yates corrected  $\chi^2=6.06$ ,  $p=0.014$ ; see Table 4).

The largest diagnostic pools found in the sample were substance use disorders (51%), mood disorders (36%), and psychotic disorders (26%). Anxiety disorders (2%) and other disorders (17%) were also present. Patients with multiple diagnoses were included in the sample. The secondary analysis found no statistically significant between-group differences (Table 5).

**Table 2** Treatment factors

	Days between admissions		
	Total (n=202)	≤3 (n=93)	>3 (n=109)
<sup>a</sup> Days since last admission (mean ± SD)	8.2±8.6	1.5±0.8	13.9±8.1
Hospital visits in last 30 days (mean ± SD)	4.4±4.8	5.8±5.9	2.9±2.5
Readmission visit related to/or a continuation of an unresolved issue from the previous visit			
Identical or very similar to previous visit	145 (72%)	67 (72%)	78 (72%)
Related but not identical	44 (22%)	21 (23%)	23 (21%)
Not related but could have been addressed	1 (1%)	1 (1%)	0 (0%)
Totally unrelated	8 (4%)	3 (3%)	5 (5%)
<sup>b</sup> Continuity of care: treatment recommendations provided at the previous visit followed			
Fully	12 (6%)	4 (4%)	8 (7%)
Partially	72 (36%)	28 (30%)	44 (40%)
Not at all	115 (58%)	58 (62%)	57 (52%)
<sup>c</sup> Continuity of care: resources provided at the previous visit utilized			
Fully	11 (5%)	5 (5%)	6 (6%)
Partially	72 (36%)	26 (28%)	46 (42%)
Not at all	118 (58%)	62 (67%)	56 (51%)

**Notes:** Random sample of 30-day psychiatric patient readmissions over a 12-month period, September 2015 to August 2016. <sup>a</sup>Included for descriptive purposes. Information in the chart review indicated a problem in the continuity of care: <sup>b</sup>treatment recommendations provided at discharge were not able to be followed; <sup>c</sup>referrals and appointments for psychiatric and/or medical treatment were not able to be completed.

## Factors identified to prevent readmission

Reviewers identified factors that could ameliorate psychiatric patient readmission visits. These include facilitation of bidirectional communication with follow-up providers (50%) and/or family members and other caretakers (46%). Sixty-five percent of patients need to be assigned an intensive case manager or be reconnected with their existing intensive case manager (38%). Other factors that may help reduce readmission are as follows: support in managing psychotropic medication prescriptions (50%), increased access to drug and alcohol counseling (65%, both within and outside PMH), and assistance with resolving housing issues (short term, 39%; long term, 50%). No secondary analyses were performed for these factors (Table 6).

## Discussion

Hospitals across the country are struggling to meet the increased demand for psychiatric services in the ED. The findings from this project, while not comprehensive, suggest that, in many cases, lack of continuity of care may be a significant factor contributing to readmission. The problem may be reduced to the absence of the patient at a facility that

**Table 3** Factors contributing to readmission

	Days between admissions		
	Total (n=202)	≤3 (n=93)	>3 (n=109)
<b>Outpatient follow-up</b>	<b>43%</b>	<b>41%</b>	<b>46%</b>
Missed appointment	56 (26%)	23 (25%)	33 (30%)
Did not understand follow-up instructions	3 (1%)	1 (1%)	1 (2%)
Clinic unable to provide services	1 (1%)	1 (1%)	0 (0%)
Other problem	33 (16%)	18 (19%)	14 (13%)
<b>Referrals</b>	<b>56%</b>	<b>63%</b>	<b>48%</b>
Did not use referral	95 (46%)	51 (55%)	44 (40%)
Facility unable to provide services	4 (2%)	4 (4%)	0 (0%)
Referral not given	1 (1%)	1 (1%)	0 (0%)
Other problem	16 (8%)	8 (9%)	8 (7%)
<b>Transportation</b>	<b>14%</b>	<b>13%</b>	<b>14%</b>
Transportation not available for medical appointment	2 (1%)	0 (0%)	2 (2%)
Transportation not available for psychiatric appointment	5 (2%)	3 (3%)	2 (2%)
Transportation not available for substance treatment	4 (2%)	3 (3%)	1 (1%)
Other problem	17 (9%)	10 (11%)	7 (6%)
<b>Housing</b>	<b>63%</b>	<b>72%</b>	<b>58%</b>
Homeless	127 (63%)	64 (69%)	63 (58%)
Could not get into shelter	1 (1%)	1 (1%)	0 (0%)
Banned from shelter	1 (1%)	1 (1%)	0 (0%)
Asked to leave current housing	1 (1%)	1 (1%)	0 (0%)
No identification – required for shelter	4 (2%)	3 (3%)	1 (1%)
Does not want to return to current housing	1 (1%)	1 (1%)	0 (0%)
Other problem	4 (2%)	2 (2%)	2 (2%)
<b>Medications</b>	<b>41%</b>	<b>40%</b>	<b>42%</b>
Unable to fill prescription	9 (4%)	3 (3%)	6 (6%)
Did not go to pharmacy	38 (18%)	22 (24%)	16 (15%)
Declined by pharmacy	1 (1%)	1 (1%)	0 (0%)
Unable to afford prescription medications	1 (1%)	0 (0%)	1 (1%)
Lost prescription	9 (4%)	3 (3%)	6 (6%)
Unable to tolerate (side effects) medication	4 (2%)	1 (1%)	3 (3%)
Refused to take prescription medications	8 (4%)	4 (4%)	4 (4%)
Did not understand the need to take medications	1 (1%)	0 (0%)	1 (1%)
Forgot to take medication	1 (1%)	1 (1%)	0 (0%)
Afraid of medication	0 (0%)	0 (0%)	0 (0%)
Confused about how to take medication	2 (1%)	0 (0%)	2 (2%)
Other problem	21 (10%)	5 (5%)	16 (15%)

**Notes:** Random sample of 30-day psychiatric patient readmissions over a 12-month period, September 2015 to August 2016; includes homelessness as well as other concerns such as does not like, or cannot tolerate, current housing, could not get into shelter, banned from shelter, and asked to leave current housing.

provides community care (medications, housing, inpatient, outpatient, etc.) after discharge from the ED. This can be further broken down: 1) Why did the patient not receive the recommended care and 2) was there appropriate treatment available at the time of discharge?

Upon review, many of these ED visits appear to have been avoidable. In many instances, acute care is not necessary, more often may have been avoided, and had linkage to community treatment occurred. Many of these patients are seen repeatedly for the same psychiatric problem and report difficulty in managing care outside the ED. A number of factors appear to be negatively affecting patients' ability to continue receiving treatment after leaving the ED and

subsequently leading to ED readmissions for the same unresolved problem. The primary area identified for improvement was in the area of transition of care from PMH to caregivers and providers in the community. The evaluation suggested that there is a problem with the linkage of care, specifically upon exiting the hospital; patients often do not continue treatment in the community, leading to treatment being repeatedly sought for in the hospital ED.

While factors leading to psychiatric patient readmission in the hospital EDs are complex, it appears that a large number of these visits are related to substance use and may reflect the presence of a subset of patients with unique needs. It may be beneficial to have dedicated space for these patients

**Table 4** Presenting complaint

	Days between admissions		
	Total (n=202)	≤3 (n=93)	>3 (n=109)
<b>Psychiatric symptoms (% of patients)</b>	<b>52%</b>	<b>49%</b>	<b>53%</b>
Symptoms of anxiety	13	5	8
Symptoms of confusion (delirium and dementia)	2	1	1
Symptoms of mania/hypomania	8	3	5
Symptoms of depression	34	18	16
Symptoms of psychosis (ie, paranoia, disorganized thought process, and hallucinations)	47	19	28
<b>Substance use*</b>	<b>36%</b>	<b>45%</b>	<b>28%</b>
Substance use issue (withdrawal/requesting referral)	55	31	24
Intoxication primary issue (violent or disorganized behavior included if secondary to intoxication)	17	11	6
<b>Violent/suicidal ideation and behavior</b>	<b>52%</b>	<b>48%</b>	<b>55%</b>
Violence: self-directed (suicidal ideation, behavior, and post-suicide attempt)	84	34	50
Violence: directed toward others (homicidal, aggressive, assaultive, and intending to harm others)	21	11	10
<b><sup>a</sup>Primary medical complaint*</b>	<b>13%</b>	<b>10%</b>	<b>16%</b>
<b><sup>b</sup>Nonacute psychiatric complaint</b>	<b>6%</b>	<b>6%</b>	<b>6%</b>
Social factors leading to psychosocial stress (ie, shelter, food, and respite)	2	0	2
Psychiatric medications refill	11	6	5

**Notes:** Random sample of 30-day psychiatric patient readmissions in the emergency department over a 12-month period, September 2015 to August 2016. Patients may have presented with multiple psychiatric complaints (psychiatric symptoms, substance use disorders, and violent/suicidal ideation and behavior). <sup>a</sup>Patients who presented for the treatment of a medical condition and were later found to have a comorbid psychiatric complaint. <sup>b</sup>Patients who did not present for or require acute psychiatric care. \* $p < 0.05$  (Yates corrected  $\chi^2=6.06$ ,  $p=0.014$ ).

to be observed as they are being evaluated, followed by community-based detoxification and residential treatment available. In general, additional inpatient and outpatient services are needed for patients with substance use disorders, with and without other comorbid psychiatric and medical conditions.

Given the chronic nature of psychiatric illnesses and the associated impairment in social and occupational functioning that increases with symptom severity, it would be expected that patients with unresolved psychiatric conditions that

remain untreated will have acute exacerbations of the disease and would then present for care in a familiar environment such as the ED. As noted, the presenting complaints share the common theme of unresolved psychiatric issues. In the study sample, 90% of readmitted patients came in to receive services for the exact or a related complaint as in the previous visit. The issue becomes how to improve the accessibility

**Table 5** Diagnosis

	Days between admissions		
	Total (n=202)	≤3 (n=93)	>3 (n=109)
<b>No diagnosis</b>	<b>0%</b>	<b>0%</b>	<b>0%</b>
<b>Anxiety disorders</b>	<b>2%</b>	<b>2%</b>	<b>1%</b>
<b>Mood disorders</b>	<b>36%</b>	<b>32%</b>	<b>39%</b>
Bipolar disorder	24	7	18
Depressive disorder	48	23	25
<b>Psychotic disorders</b>	<b>26%</b>	<b>26%</b>	<b>25%</b>
Schizophrenia/schizoaffective	40	19	21
Psychosis disorder other or unspecified	13	5	8
<b>Substance use disorders (including withdrawal)</b>	<b>51%</b>	<b>57%</b>	<b>45%</b>
<b>Other disorders</b>	<b>17%</b>	<b>20%</b>	<b>16%</b>

**Notes:** Random sample of 30-day psychiatric patient readmissions over a 12-month period, September 2015 to August 2016. Anxiety disorders include panic disorder, obsessive-compulsive disorder, posttraumatic stress disorder, anxiety disorder not otherwise specified, and anxiety disorder.

**Table 6** Quality improvement opportunities

	Days between admissions		
	Total (n=202)	≤3 (n=93)	>3 (n=109)
Support and education for filling prescriptions	37%	30%	43%
Assistance with transportation	26%	29%	31%
Increased communication with follow-up providers	50%	40%	58%
Increased communication with family or other caretaker such as case worker	46%	38%	53%
Increased drugs/ETOH resources within PMH	65%	65%	63%
Increased drugs/ETOH resources outside PMH	65%	67%	62%
Establishing intensive case management	65%	62%	65%
Connecting with existing intensive case management	38%	33%	41%
Short-term housing solutions (overnight stay)	39%	43%	35%
Long-term housing solutions	50%	53%	45%

**Note:** Random sample of 30-day psychiatric patient readmissions over a 12-month period, September 2015 to August 2016.

**Abbreviations:** ETOH, ethyl alcohol; PMH, Parkland Memorial Hospital.

and utilization of community resources by this vulnerable population of psychiatric patients.

Within the PMH catchment area, there are community resources available to manage and treat mental health and substance use, as well as to support in meeting housing and funding needs. Unfortunately, the services are, at best, limited and, even when they exist, are fragmented, with multiple individual service providers independently handling patient needs. Vulnerable patients living in the community are not always able to effectively access the resources needed to prevent an acute exacerbation of their psychiatric illness. Patients in this subpopulation are frequently high utilizers of ED services. In these situations, PMH has 2 primary roles: 1) providing the best possible level of care based on a level of acuity and 2) (re)establishing the patient's linkages to appropriate community resources. While it is understood that subpopulation of patients may continue to use the ED as the primary source of psychiatric care, a large number of unnecessary visits may be reduced through improved connection to and collaboration with appropriate community service providers.

A number of opportunities for quality improvement were identified and action plans were developed. Several of the initiatives have begun to be implemented; others are still in the planning stages, while others remain under consideration.

## Limitations and future directions

This study is a naturalistic observation, and as such, there is no experimental control (eg, open-label treatment, observational data, retrospective data analysis, and unblinded raters), leading to any number of inferential concerns. Specifically, raters were providers in the PED and as such familiar with the operations, but were not directly involved in the cases assigned and relied upon the detail and completeness of the chart note. While the quality of chart notes is monitored and regulated, much of the information used to make ratings was extracted from the additional detail contained within the note, which may vary from case to case. Another limitation that needs to be considered when interpreting the data is that the PRS was constructed specifically for this study, and the content of these final questions was designed for use at PMH and may be limited in scope. This is reflected in the high prevalence rates found across problem areas. Future studies may consider expanding this section to include more speculative sources of readmission. All sections of the PRS, the final section in particular, would require modification to meet the specific needs of the setting under study, and items were reevaluated for validity and reliability. A study such as this has significant strengths in that it is replicable

in most settings; however, this ease of replication also poses a concern due to the lack of experimental control. Another strength of the study is the location (large metropolitan area) and population (public hospital), which aid in the generalization of the findings to other public and, perhaps to a lesser degree, private mental health facilities. While the process is iterative and ongoing, global outcomes are obtainable.<sup>17</sup> The next step is to evaluate the outcomes of specific action plans and to identify those that most effectively address the concern of chronic psychiatric patient readmission in the ED.

## Conclusion

This study described a continuous quality improvement project, using a well-established technique (the PDSA cycle), to address a critical ongoing concern shared by public hospitals around the country: how to improve psychiatric patient care in the ED, in the presence of increased volume and in the absence of additional resources. In the case of PMH, as would be expected of any institution, quality improvement opportunities are found internally, as well as outside the organization. Holistically, the findings point in one direction; specifically, it appears that it will require a unified effort, with all community resource providers acting in symphony, to ebb the rising tide of requests for psychiatric services in the hospital EDs across the country. While, on the face of it, this seems a naïve proposition, the economic force generated by the increased burden of maintaining fragmented services may be sufficient to drive change out of sheer necessity. It appears that, in this case, "A house divided will not stand." The process at PMH has only begun, but thus far, the community resource providers we have encountered have been eager and willing to collaborate on the acute and long-term solutions.

## Acknowledgments

This publication was supported by National Institutes of Health (NIH)/National Center for Research Resources Clinical and Translational Science Institute Grant Number UL1 RR025780. Its contents are the authors' sole responsibility and do not necessarily represent official NIH views. The authors would like to thank A John Rush (the UTSW, Dallas, TX, USA), for his assistance in the preparation of this manuscript.

## Disclosure

The authors report no conflicts of interest in this work.

## References

1. Kessler RC, Chiu WT, Demler O, Walters EE. Prevalence, severity, and comorbidity of twelve-month DSM-IV disorders in the National Comorbidity Survey Replication (NCS-R). *Arch Gen Psychiatry*. 2005; 62(6):617–627.



2. National Center for Health Statistics. *Health, United States 2010: With Special Feature on Death and Dying*. Hyattsville, MD; National Center for Health Statistics; 2011.
3. Substance Abuse and Mental Health Services Administration. Mental and substance use disorders [Updated October 9, 2014]. Available from: <http://www.samhsa.gov/disorders>. Accessed July 10, 2017.
4. Agency for Healthcare Research and Quality [homepage on the Internet]. Available from: <http://hcupnet.ahrq.gov>. Accessed July 10, 2017.
5. Heslin KC, Weiss AJ. Hospital Readmissions Involving Psychiatric Disorders, 2012. HCUP Statistical Brief #189. Rockville, MD: Agency for Healthcare Research and Quality; 2015. Available from: <http://www.hcup-us.ahrq.gov/reports/statbriefs/sb189-Hospital-Readmissions-PsychiatricDisorders-2012.pdf>. Accessed February 19, 2018.
6. Kessler RC, Aguilar-Gaxiola S, Alonso J, et al. The global burden of mental disorders: an update from the WHO World Mental Health (WMH) surveys. *Epidemiol Psychiatr Soc*. 2009;18(1):23–33.
7. Whiteford HA, Degenhardt L, Rehm J, et al. Global burden of disease attributable to mental and substance use disorders: findings from the Global Burden of Disease Study 2010. *Lancet*. 2013;382(9904):1575–1586.
8. Whiteford HA, Ferrari AJ, Degenhardt L, Feigin V, Vos T. The global burden of mental, neurological and substance use disorders: an analysis from the Global Burden of Disease Study 2010. *PLoS One*. 2015;10(2):e0116820.
9. Vigo D, Thornicroft G, Atun R. Estimating the true global burden of mental illness. *Lancet Psychiatry*. 2016;3(2):171–178.
10. Weiss AJ, Barrett ML, Steiner C. Trends and projections in inpatient hospital costs and utilization, 2003–2013. HCUP Statistical Brief #175. Rockville, MD: Agency for Healthcare Research and Quality; 2014. Available from: <http://www.hcupus.ahrq.gov/reports/statbriefs/sb175-Hospital-Cost-Utilization-Projections-2013.pdf>. Accessed March 13, 2015.
11. Larkin GL, Claassen CA, Emond JA, Pelletier AJ, Camargo CA. Trends in U.S. emergency department visits for mental health conditions, 1992 to 2001. *Psychiatr Serv*. 2005;56(6):671–677.
12. Fields WW, Asplin BR, Larkin GL, et al. The Emergency Medical Treatment and Labor Act as a federal health care safety net program. *Acad Emerg Med*. 2001;8(11):1064–1069.
13. Hazlett SB, McCarthy ML, Londner MS, Onyike CU. Epidemiology of adult psychiatric visits to US emergency departments. *Acad Emerg Med*. 2004;11(2):193–195.
14. Larkin GL, Smith RP, Beautrais AL. Trends in US emergency department visits for suicide attempts, 1992–2001. *Crisis*. 2008;29(2):73–80.
15. Regier DA, Narrow WE, Rae DS, Manderscheid RW, Locke BZ, Goodwin FK. The de facto US mental and addictive disorders service system. Epidemiologic catchment area prospective 1-year prevalence rates of disorders and services. *Arch Gen Psychiatry*. 1993;50(2):85–94.
16. Merrick EL, Perloff J, Tompkins CP. Emergency department utilization patterns for Medicare beneficiaries with serious mental disorders. *Psychiatr Serv*. 2010;61(6):628–631.
17. Health Resources and Services Administration. Quality Improvement. Available from: <https://www.hrsa.gov/quality/toolbox/methodology/qualityimprovement/part3.html>. Accessed February 19, 2018.
18. Sullivan G, Wells KB, Morgenstern H, Leake B. Identifying modifiable risk factors for rehospitalization: a case-control study of seriously mentally ill persons in Mississippi. *Am J Psychiatry*. 1995;152(12):1749–1756.
19. Walker R, Minor-Schork D, Bloch R, Esinhardt J. High risk factors for rehospitalization within six months. *Psychiatr Q*. 1996;67(3):235–243.
20. Boyer CA, McAlpine DD, Pottick KJ, Olfson M. Identifying risk factors and key strategies in linkage to outpatient psychiatric care. *Am J Psychiatry*. 2000;157(10):1592–1598.
21. Nelson EA, Maruish ME, Axler JL. Effects of discharge planning and compliance with outpatient appointments on readmission rates. *Psychiatr Serv*. 2000;51(7):885–889.
22. Oiesvold T, Saarento O, Sytema S, et al. Predictors for readmission risk of new patients: the Nordic Comparative Study on Sectorized Psychiatry. *Acta Psychiatr Scand*. 2000;101(5):367–373.
23. Shaw H, Mackie CA, Sharkie I. Evaluation of pharmacy discharge planning on medication problems experienced by discharged acute admission mental health patients. *Int J Pharm Pract*. 2000;8(2):144–153.
24. Cuffel BJ, Held M, Goldman W. Predictive models and the effectiveness of strategies for improving outpatient follow-up under managed care. *Psychiatr Serv*. 2002;53(11):1438–1443.
25. Durbin J, Lin E, Layne C, Teed M. Is readmission a valid indicator of the quality of inpatient psychiatric care? *J Behav Health Serv Res*. 2007;34(2):137–150.
26. Dixon L, Goldberg R, Iannone V, et al. Use of a critical time intervention to promote continuity of care after psychiatric inpatient hospitalization. *Psychiatr Serv*. 2009;60(4):451–458.
27. Joynt KE, Jha AK. Thirty-day readmissions – truth and consequences. *N Engl J Med*. 2012;366(15):1366–1369.
28. Vigod SN, Kurdyak PA, Dennis CL, et al. Transitional interventions to reduce early psychiatric readmissions in adults: systematic review. *Br J Psychiatry*. 2013;202(3):187–194.
29. Shaffer SL, Hutchison SL, Ayers AM, et al. Brief critical time intervention to reduce psychiatric rehospitalization. *Psychiatr Serv*. 2015;66(11):1155–1161.
30. Smith TE, Abraham M, Bolotnikova NV, et al. Psychiatric inpatient discharge planning practices and attendance at aftercare appointments. *Psychiatr Serv*. 2017;68(1):92–95.
31. Harris PA, Taylor R, Thielke R, Payne J, Gonzalez N, Conde JG. Research electronic data capture (REDCap) – a metadata-driven methodology and workflow process for providing translational research informatics support. *J Biomed Inform*. 2009;42(2):377–381.
32. IBM Corp. *IBM SPSS Statistics for Windows, Version 22.0*. Armonk, NY: IBM Corp; 2013.

## Neuropsychiatric Disease and Treatment

### Publish your work in this journal

Neuropsychiatric Disease and Treatment is an international, peer-reviewed journal of clinical therapeutics and pharmacology focusing on concise rapid reporting of clinical or pre-clinical studies on a range of neuropsychiatric and neurological disorders. This journal is indexed on PubMed Central, the 'PsycINFO' database and CAS,

Submit your manuscript here: <http://www.dovepress.com/neuropsychiatric-disease-and-treatment-journal>

Dovepress

and is the official journal of The International Neuropsychiatric Association (INA). The manuscript management system is completely online and includes a very quick and fair peer-review system, which is all easy to use. Visit <http://www.dovepress.com/testimonials.php> to read real quotes from published authors.