

Antihypertensive effect of the mineralocorticoid receptor antagonist eplerenone: a pooled analysis of patient-level data from comparative trials using regulatory-approved doses

Mireille Fernet¹
Bruce Beckerman²
Paula Abreu²
Katharina Lins³
John Vincent²
Ellen Burgess⁴

¹Department of Medical Affairs, Pfizer Canada Inc., Kirkland, QC, Canada; ²Department of Clinical Affairs, Pfizer Inc., New York, NY, USA; ³Department of Medical Affairs, Pfizer Ltd., Tadworth, UK; ⁴Department of Medicine, Faculty of Medicine, University of Calgary, Calgary, AB, Canada

Purpose: Several options are available for the treatment of hypertension; however, many treated patients are still not below blood pressure (BP) target. Eplerenone, a selective mineralocorticoid receptor antagonist, is an approved treatment option for the management of patients with hypertension in a number of countries. This patient-level pooled analysis was conducted to document the efficacy and safety/tolerability of eplerenone at the dosages approved for use in hypertension in comparison to placebo or other approved antihypertensive agents.

Methods: Seventeen Phase III studies conducted in patients with mild-to-moderate hypertension in the Eplerenone Hypertension Clinical Program were reviewed; eleven met the selection criteria. The primary endpoint was change from baseline in seated diastolic BP and seated systolic BP measured at the end of the study.

Results: A total of 2,698 patients were included in this per-protocol analysis. In patients treated for at least 6 weeks with a stable dose of eplerenone, doses of 50 mg daily and 100 mg daily were associated with greater reductions of seated systolic BP and seated diastolic BP compared with placebo ($P < 0.001$) and active-controlled studies ($P < 0.033$). In the analysis of covariance model testing of the contribution of four factors (age, body mass index [BMI], history of cardiovascular disease, and diabetes) on the BP lowering effects of eplerenone, only BMI and age were associated with small though statistically significant changes in BP (< 0.2 mmHg). Eplerenone was well tolerated; headache was the most common adverse event for patients in any group. Severe hyperkalemia (serum potassium level > 6.0 mmol/L) occurred in up to 0.4% in the eplerenone groups, 0.4% in the placebo group, and 0.1% in the active-control group.

Conclusion: This patient-level pooled analysis provides robust evidence that eplerenone, at 50 mg or 100 mg daily, was effective in lowering BP in patients with mild-to-moderate hypertension and was well tolerated.

Keywords: hypertension, eplerenone, aldosterone, cardiovascular, selective mineralocorticoid blocker

Introduction

Hypertension is a significant risk factor for the progression of atherosclerosis and associated cardiovascular (CV) events such as stroke and myocardial infarction, as well as the development and progression of heart failure and renal disease.¹ The treatment for hypertension has been demonstrated to reduce CV events, prevent premature deaths, and prolong life.² The control rates for hypertension have improved in most countries over the past 20 years with the biggest difference in physician practice being the prescription

Correspondence: Ellen Burgess
Department of Medicine, Faculty of
Medicine, University of Calgary, 1403-
29th Street, NW, Calgary, AB T2N2T9,
Canada
Tel +1 403 944 1598
Fax +1 403 944 2876
Email ellen.burgess@ahs.ca

of two or more antihypertensive medications rather than using fewer medications.^{3,4} However, approximately 35%–50% of patients remain above their target blood pressure (BP).^{3,5,6} Recently, trials have demonstrated the value of treating to lower target BPs (reduction in fatal and nonfatal major CV events and death from any cause for SPRINT⁷ and reduction in stroke for ACCORD⁸); attainment of these targets requires more drugs, and more patients will not reach these lower target BPs. Studies of patients with primary, secondary, or resistant hypertension have demonstrated the role of aldosterone and the effect of mineralocorticoid receptor antagonists (MRAs) in lowering BP in those patients.^{9–12}

Aldosterone has been described as having an important influence on CV and renal diseases through the elevation of systemic BP as well as the development of fibrosis in the vasculature. The use of angiotensin converting enzyme inhibitors (ACEIs) and angiotensin II type 1-receptor blockers (A-II antagonist) was initially shown to reduce plasma levels of aldosterone, but after 6–12 months of therapy, plasma aldosterone levels have been demonstrated to rise back to baseline levels (a phenomenon termed “aldosterone breakthrough”).¹³ The use of the MRAs, spironolactone and eplerenone, has been formally documented to be effective in reducing mortality in patients with chronic systolic heart failure, including patients with mild¹⁴-to-severe¹⁵ heart failure symptoms, as well as in patients with signs and symptoms of heart failure post myocardial infarction,¹⁶ when added to the standard of care including ACE-I or A-II antagonist and beta-blocker therapy. Both spironolactone and eplerenone have also been found to be effective in reducing BP in patients with hypertension.^{17,18} Eplerenone was first approved for the treatment of hypertension in 2002 in the United States. It then received the indication of systolic heart failure post myocardial infarction in the USA, Europe, and eventually Canada; eplerenone was approved for chronic systolic heart failure in 2012 in Canada, Europe, and elsewhere. In Canada, the regulatory indication for use in mild and moderate essential hypertension was granted in 2014. Canada is one of seven countries in which eplerenone has an indication for the treatment of hypertension.

Eplerenone is referred to as a selective MRA since it is much more selective in binding to the mineralocorticoid receptor than spironolactone, with minimal binding to glucocorticoid, progesterone, and androgen receptors.^{19–22} Consequently, the likelihood of adverse effects such as gynecomastia, reduced libido, metabolic adverse effects (eg, increased A1c and cortisol), and menstrual irregularities is decreased.^{23,24} Furthermore, this selectivity might have

additional clinical implications since the long-term effects of androgen inhibition (reduced levels of anabolic hormones such as testosterone and dehydroepiandrosterone sulfate) have been documented to constitute strong markers of poor prognosis independent of conventional risk predictors in men with chronic heart failure.²⁵

The efficacy of eplerenone in hypertension has been evaluated in several studies, using doses ranging from 25 to 400 mg daily. The objective of this analysis was to pool patient-level data from the Eplerenone Hypertension Clinical Program, in which patients received eplerenone at the approved dosage for hypertension of 50 mg daily or 100 mg daily,²⁶ for the purpose of documenting the efficacy and safety of this treatment, in comparison to placebo or other approved antihypertensive agents.

Patients and methods

Selection criteria – studies and patients

Seventeen Phase III studies were conducted in the Eplerenone Hypertension Clinical Program sponsored by the originator pharmaceutical company and reviewed; eleven studies met inclusion criteria and were analyzed. Of the remaining six studies, four were conducted in a patient population outside the approved indication and two studies were not controlled clinical trials and therefore were excluded from this analysis (see Supplementary materials for more details regarding each study). The study selection was based on the following criteria:

- Phase III, randomized, placebo-controlled and active-controlled, parallel-group studies conducted as part of the Eplerenone Hypertension Clinical Program
- Approved doses of eplerenone for the treatment of hypertension are 50 and 100 mg daily. These included 25 mg BID, 50 mg QD, 50 mg BID, and 100 mg QD. All other arms used daily doses of <50 mg daily or >100 mg daily, which are not approved for the hypertension indication and were thus excluded from this analysis
- Individual clinical subject-level data were available

There were two categories of study: category 1: placebo-controlled, fixed-dose studies (study numbers 010, 015, 049, and 403) or titrate-to-effect studies (study numbers 020, 023, and 024) and category 2: active-controlled, fixed-dose studies (study numbers 010 and 015) or titrate-to-effect studies (study numbers 016, 019, 020, 022, and 026). Some trials used both placebo and active comparators and were included in the analysis of both categories 1 and 2. Eplerenone was compared in seven trials with placebo and in seven trials with active comparators (three trials were both placebo and

active controlled). Eplerenone was coadministered with other antihypertensive medication (hydrochlorothiazide, a calcium channel blocker, a beta-blocker, an ACE-I or an A-II antagonist) in three of the eleven studies included in the pooled analysis. Study durations varied from 8 to 24 weeks (see Supplementary materials for study references).

Study population from selected studies

Patients with mild-to-moderate hypertension were eligible to participate in the eplerenone Phase III hypertension studies if they met the entry criteria. To qualify for inclusion, participants from ten of the eleven selected studies must have been adults with a history of mild-to-moderate hypertension currently controlled with medication or, if untreated, mild-to-moderate hypertension. To qualify for admission in the eleventh study included in this pooled analysis, participants must have been ≥ 50 years of age with elevated systolic BP (SBP; see Supplementary materials for individual study key inclusion criteria).

Outcome measures – endpoints

The primary endpoint was defined as the change from baseline in seated diastolic BP (seDBP) and seated systolic BP (seSBP) captured at the end of the study. The proportion of patients who achieved BP targets of seSBP and seDBP 140/90 mmHg was computed as a secondary endpoint.

Safety data (adverse events [AEs] and serious AEs [SAEs]) were summarized as well as discontinuations due to AEs. Clinical laboratory data analyzed included change from baseline in serum potassium levels (mean \pm SD) at final visit, and the number of subjects reaching specific serum potassium levels, as well as incidence of hyperkalemia and hypokalemia reported as AEs by the investigators.

Two analyses sets were considered: the efficacy “per-protocol” and the safety analysis set. The efficacy “per-protocol” analysis set included all subjects

- who were randomly assigned to treatment
- who had a baseline and post-baseline primary efficacy evaluation
- who received at least 6 weeks of fixed dose of study drug.

The safety analysis set included all subjects

- who were randomly assigned to treatment
- who took at least one dose of double-blind study drug.

Statistical analysis

Patient-level data were utilized in all analyses. The demographics and the efficacy analyses were performed on the

“per-protocol” population noted above. The safety analysis was performed on the safety population. The pooled analysis inclusion criteria for studies and populations were prespecified prior to analysis being performed. Additionally, the clinical trial selection criteria, key efficacy, and safety endpoints and the statistical methods were prespecified prior to performing any analysis.

Patient disposition by study and pooled categories of studies were summarized by dose (50 mg daily/100 mg daily) and placebo/active controls dependent on the pooled analysis. Patient disposition described the number of subjects randomized and subjects with baseline and post baseline assessment. Demographics, baseline characteristics, and duration of treatment were summarized by treatment. Descriptive statistics such as observed raw means and standard deviations, and change from baseline to end-of-treatment (the only exception being study 016, as explained in the Supplementary materials), were calculated by treatment group for each study. Differences in adjusted means between each treatment group and the placebo or active control comparator and their respective 95% confidence intervals were presented. An analysis of covariance (ANCOVA) with treatment group as the factor and baseline value as a covariate was used to analyze between group differences for the mean change in seDBP and seSBP from baseline. The percentage of patients within each group reaching target BP was calculated as a secondary efficacy outcome, using descriptive statistics.

The goal was not to provide inferential analyses but to summarize the available data. Results were incorporated into two pooled analyses: a placebo-controlled pooled analysis and an active-controlled pooled analysis. A fixed-effects model was used for both pooled analyses. Change from baseline in seSBP and seDBP was analyzed using an ANCOVA model with treatment, study, and baseline covariate (seSBP and seDBP) in the model. For all efficacy endpoints, the analyses were performed at the end of study and for the above-described efficacy population. The overall estimate of treatment difference of each group vs placebo and vs active comparator, standard error, and associated 95% CI, as well as overall *P*-value are provided. Forest plots were produced to illustrate the results of each pooled analysis, as well as summarizing estimates for the difference in least-square (LS) means and 95% CIs.

Subgroup analysis

In this pooled analysis, the effects of baseline characteristics of the hypertensive patients on the BP response were explored. Subgroup analyses were performed for the primary

efficacy endpoint for the following baseline characteristics: age at entry (<64 years, ≥64 years), BMI (>30 kg/m²/ ≤30 kg/m²); history of CV disease (yes, no), and diabetes mellitus (yes, no). Both history of CV disease and diabetes mellitus were based on the investigator's assessment of medical history documentation. The association between the BP measurements and the identified risk factors listed above were described using differences in LS means and *P*-values from an ANCOVA model with terms for treatment and study.

Ethical approval

This article contains results of secondary analysis of studies with human participants previously performed.

Results

Patient disposition

The per-protocol analysis set included 2,698 patients; of these, 1,394 were from placebo-controlled studies and 1,304 from active-controlled studies. The safety analysis set included 3,192 patients; of these, 1,677 were from placebo-controlled studies and 1,515 from active-controlled studies (Table 1). The following antihypertensive medications were included in the active-controlled studies; spironolactone 50 mg BID, hydrochlorothiazide 12.5 mg QD and 25 mg QD, losartan 50 mg QD and 100 mg QD, enalapril 5 mg QD, 10mg QD, 20 mg QD, and 40 mg QD, amlodipine 2.5 mg QD, 5 mg QD, and 10 mg QD (see Supplementary materials for more details on individual studies).

Reasons for lack of eligibility for the pooled analysis are presented in Figure 1A, B for the placebo-controlled and active-controlled studies, respectively.

Baseline characteristics of the patients were similar among the treatment groups. Table 2 summarizes key demographic values and clinical characteristics. Patients enrolled in active-controlled studies tended to have a higher rate of CV disease.

Efficacy findings

Eplerenone was compared in seven trials to placebo and in seven trials to active comparators. The primary endpoint was

defined as the change from baseline of seDBP and seSBP captured at the end of the study. In order to account for heterogeneity in different studies, an ANCOVA was conducted; the LS means and *P*-values are summarized in Tables 3 and 4. In patients with mild-to-moderate primary hypertension treated for at least 6 weeks on a stable dose, both eplerenone 50 mg daily and 100 mg daily reduced seSBP and seDBP from baseline (Table 3A, B). Compared with placebo and active controlled, the changes from baseline in seSBP/seDBP were statistically significantly greater (*P*-value <0.001 and *P*-value <0.033, respectively) with eplerenone. Descriptive statistics are summarized in the Supplementary materials.

Forest plots of the fixed-effects model for the pooled analysis including estimates and 95% confidence intervals of the mean changes from baseline in seSBP and seDBP are presented in Figure 2A for eplerenone 50 mg daily and 100 mg daily vs placebo, and Figure 2B for eplerenone 50 mg daily and 100 mg daily vs active control.

The proportion of patients reaching BP treatment goal (<140/90 mmHg) by the end of study were 31.4%, 45.4%, and 35.8% respectively for placebo-, eplerenone 50 mg- and eplerenone 100 mg-treated patients in the placebo-controlled studies. In the active-controlled studies, this proportion was 40.2%, 46.5%, and 45.8% for active-controlled patients, eplerenone 50 mg- and eplerenone 100 mg-treated patients, respectively.

Subgroup analysis (Exploratory efficacy analyses)

Changes from baseline in seSBP and seDBP were analyzed using an ANCOVA model that included preidentified factors of age group, BMI, history of CV disease, and diabetes mellitus as covariates. In this ANCOVA model, two factors of interest were associated with statistically significant changes from baseline in seSBP (BMI) and seDBP (age), that is, the model indicated that BMI had a statistically significant impact on seSBP, and age had a statistically significant impact on seDBP. While these factors resulted in statistical differences compared with the unadjusted analysis, the size of the differences was not considered clinically meaningful, that is,

Table 1 Overview of patient disposition

Type of studies	Patients randomized	Patients treated	Patients with post-baseline efficacy assessments	Patients receiving at least 6 weeks of fixed dose of study drug
Placebo-controlled studies	1,679	1,677	1,640	1,394
Active-controlled studies	1,517	1,515	1,469	1,304
Total	3,196	3,192	3,109	2,698

Notes: Placebo-controlled studies included 010, 015, 020, 023, 024, 049, and 403. Active-controlled studies included 010, 015, 016, 019, 020, 022, and 026.

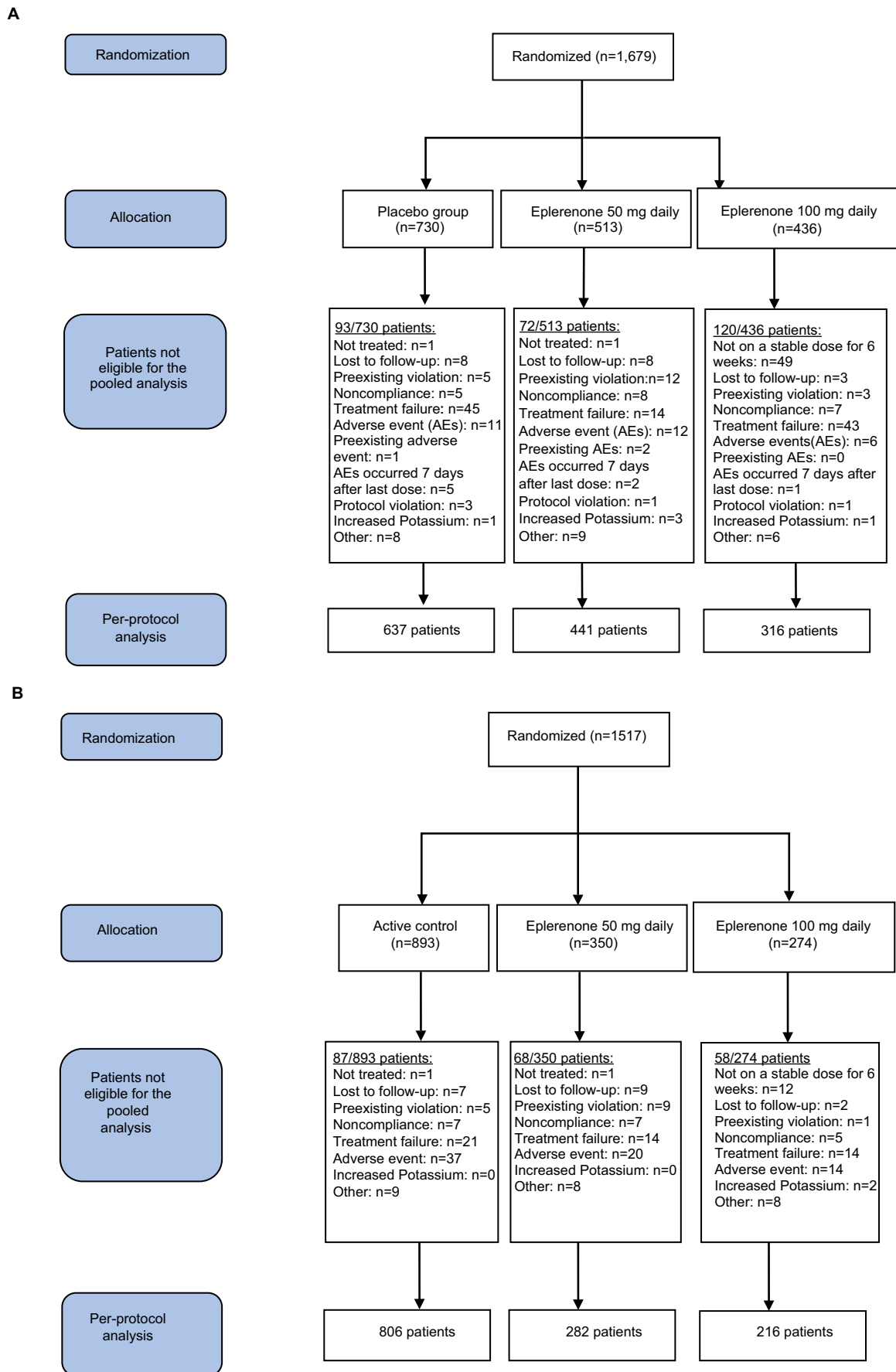


Figure 1 Patient disposition. (A) Placebo-controlled studies. (B) Active-controlled studies.

Table 2 Baseline demographic and clinical characteristics of per-protocol set^a

	Placebo-controlled studies			Active-controlled studies		
	Placebo	Eplerenone 50 mg	Eplerenone 100 mg	Active	Eplerenone 50 mg	Eplerenone 100 mg
Total N	637	441	316	806	282	216
Age in years (SD)	54.9 (11.1)	55.2 (11.2)	53.3 (9.6)	56.7 (11.8)	55.3 (12.6)	54.4 (11.0)
Ethnicity (%)						
Caucasian	55.4	62.6	52.5	75.7	79.1	72.7
Black	22.1	13.4	18.4	20.3	14.9	22.2
Asian	8.5	11.3	14.9	0.6	0.4	0.0
Hispanic	13.5	11.8	13.3	3.0	5.7	4.6
Other	0.5	0.9	0.9	0.4	0.0	0.5
Female gender (%)	50.1	48.1	44.6	48.3	49.3	47.2
BMI (kg/m²)						
Female	29.4 (5.9)	29.9 (5.9)	30.0 (6.4)	31.1 (6.7)	30.5 (5.6)	31.0 (6.2)
Male	29.2 (4.6)	29.4 (5.7)	28.7 (4.3)	29.3 (4.4)	29.2 (5.5)	29.7 (4.1)
Baseline blood pressure (mmHg)						
Systolic	151.8 (12.0)	152.8 (13.0)	154.1 (13.7)	156.5 (14.4)	153.2 (14.0)	153.7 (14.4)
Diastolic	99.1 (3.9)	99.3 (4.2)	100.4 (4.6)	97.5 (7.1)	98.3 (5.5)	98.8 (5.6)
Heart rate (bpm)	72.7 (9.3)	72.6 (8.9)	73.2 (8.8)	72.5 (9.4)	73.5 (9.6)	72.9 (8.6)
eGFR ^b in mL/min/1.73 m ² (SD)	100.5 (11.5)	98.8 (10.1)	101.0 (9.7)	99.1 (11.7)	99.1 (11.3)	100.9 (11.0)
Potassium (mmol/L)	4.3 (0.4)	4.2 (0.4)	4.2 (0.4)	4.2 (0.4)	4.2 (0.3)	4.2 (0.4)
History of cardiovascular disease ^c (%)	11.6	12.5	14.6	20.1	19.5	17.6
Diabetes ^d (%)	7.8	5.2	6.6	10.2	6.0	4.2

Notes: ^aValues are means (±SD) unless otherwise stated. ^bTransformed data using the CKD-EPI for estimation of glomerular filtration rate. ^cMajor cardiovascular exclusion criteria from participation in the clinical trials included recent history of MI/acute coronary syndrome, intermittent claudication, cerebrovascular disease, severe valvular disease, NYHA classification II–IV chronic heart failure. ^dPatients with Type I and Type II diabetes were excluded from studies 010 and 403; patients with Type I and uncontrolled Type II diabetes were excluded from studies 016, 019, 020, 022, 023, 024, 026 and 049; patients with uncontrolled Type I and Type II diabetes were excluded from study 015.

Abbreviations: BMI, body mass index; CKD-EPI, Chronic Kidney Disease Epidemiology Collaboration; eGFR, estimated glomerular filtration rate; MI, myocardial infarction; NYHA, New York Heart Association.

Table 3 Change from baseline in seated SBP/DBP

Placebo-controlled studies					
	Placebo	Eplerenone 50 mg daily	Eplerenone 100 mg daily	Eplerenone 50 mg vs placebo	Eplerenone 100 mg vs placebo
Mean change from baseline in BP ^a (SBP/DBP)	−4.98/−5.67	−12.53/−9.72	−13.73/−9.96	−7.55/−4.05	−8.75/−4.30
95% CI for SBP	−6.03, −3.93	−13.73, −11.33	−15.22, −12.24	−9.14, −5.96	−10.57, −6.93
95% CI for DBP	−6.30, −5.03	−10.44, −8.99	−10.86, −9.06	−5.01, −3.09	−5.39, −3.20
P-value				<0.0001/<0.0001	<0.0001/<0.0001
Active-controlled studies					
	Active treatment	Eplerenone 50 mg daily	Eplerenone 100 mg daily	Eplerenone 50 mg vs active	Eplerenone 100 mg vs active
Mean change from baseline in BP ^a	−13.28/−9.31	−16.53/−11.21	−17.58/−10.77	−3.25/−1.90	−4.30/−1.46
95% CI for SBP	−14.29, −12.27	−18.27, −14.79	−19.58, −15.58	−5.25, −1.25	−6.56, −2.03
95% CI for DBP	−9.91, −8.71	−12.25, −10.17	−11.96, −9.59	−3.09, −0.71	−2.81, −0.12
P-value				0.0015/0.0018	0.0002/0.0328

Note: ^aPooled least-square means and 95% CI based on a meta-analysis fixed-effects model with factors for study, treatment group, and baseline covariate.

Abbreviations: DBP, diastolic blood pressure; SBP, systolic blood pressure.

age and BMI influenced the efficacy results of changes in BP by <0.2 mmHg for all comparisons of eplerenone 50 mg daily or eplerenone 100 mg daily to placebo or the active comparator. Neither a history of CV diseases nor diabetes mellitus contributed significantly to the model.

Safety findings

Table 4 describes the treatment-emergent AEs occurring in at least 3% of patients from the safety analysis set (patients randomized and treated with at least one dose of study drug) in any group from the placebo- and the active-controlled studies,

Table 4 Treatment-emergent adverse events

Placebo-controlled studies			
	Placebo	Eplerenone 50 mg daily	Eplerenone 100 mg daily
N	729	512	436
No. of patients with serious AEs (%)	10 (1.4)	10 (2.0)	2 (0.5)
No. of patients who discontinued due to AEs (%)	15 (2.1)	22 (4.3)	7 (1.6)
No. of patients who discontinued due to serious AEs (%)	2 (0.3)	6 (1.2)	1 (0.2)
AEs, no. of events (%)^a			
Arthralgia	8 (1.1)	13 (2.5)	14 (3.2)
Dizziness	26 (3.6)	21 (4.1)	23 (5.3)
Headache	132 (18.1)	78 (15.2)	75 (17.2)
Diarrhea	22 (3.0)	11 (2.1)	9 (2.1)
Nausea	20 (2.7)	22 (4.3)	14 (3.2)
Hypercholesterolemia	3 (0.4)	6 (1.2)	14 (3.2)
Sinusitis	15 (2.1)	13 (2.5)	17 (3.9)
Upper respiratory tract infection	40 (5.5)	32 (6.3)	38 (8.7)
Bronchitis	12 (1.6)	8 (1.6)	13 (3.0)
Edema peripheral	23 (3.2)	13 (2.5)	9 (2.1)
Fatigue	18 (2.5)	14 (2.7)	14 (3.2)
Active-controlled studies			
	Active	Eplerenone 50 mg daily	Eplerenone 100 mg daily
N	892	349	274
No. of patients with serious AEs (%)	24 (2.7)	15 (4.3)	5 (1.8)
No. of patients who discontinued due to AEs (%)	71 (8.0)	35 (10.0)	15 (5.5)
No. of patients who discontinued due to serious AEs (%)	11 (1.2)	8 (2.3)	1 (0.4)
AE, no. of events (%)^a			
Dizziness	45 (5.0)	16 (4.6)	14 (5.1)
Headache	151 (16.9)	42 (12.0)	58 (21.2)
Diarrhea	33 (3.7)	10 (2.9)	4 (1.5)
Nausea	30 (3.4)	12 (3.4)	11 (4.0)
Hypercholesterolemia	6 (0.7)	6 (1.7)	9 (3.3)
Hyperglycemia	22 (2.5)	5 (1.4)	2 (0.7)
Creatine phosphokinase increased	28 (3.1)	8 (2.3)	9 (3.3)
Coughing	27 (3.0)	8 (2.3)	5 (1.8)
Sinusitis	22 (2.5)	7 (2.0)	16 (5.8)
Upper respiratory tract infection	81 (9.1)	24 (6.9)	24 (8.8)
Bronchitis	23 (2.6)	5 (1.4)	9 (3.3)

Note: ^aAEs (WHO-ART dictionary Preferred Terms) occurring in at least 3% of patients in any group.

Abbreviations: AEs, adverse events; WHO-ART, World Health Organization Adverse Reaction Terminology.

respectively. No deaths were reported; SAEs occurred in 0.5%–4.3% of eplerenone-treated patients, compared with 1.4% of placebo-treated patients and 2.7% of active-treatment comparators. In eplerenone-treated patients, 1.6%–10% discontinued because of treatment-emergent AEs (0.2%–2.3% due to SAEs) compared with 2.1% of placebo-treated patients (0.3% due to SAEs) and 8.0% of active-treatment comparators (1.2% due to SAEs). Headache was the most common AE for patients in any group (15.2%–21.2% in the eplerenone groups, 16.9% in the active control, and 18.1% in the placebo group).

At the end of treatment, the mean change in serum potassium level from baseline ranged from 0.09 to 0.13 mmol/L in the eplerenone groups, when compared with

0.00 (SE of ± 0.013) mmol/L in the placebo group and the active-control group. A serum potassium level >5.5 mmol/L was reported in 1.2%–1.9% of eplerenone-treated patients, 0.8% in the placebo group, and 1.6% in the active-control group. A serum potassium level >6.0 mmol/L occurred in 0.0%–0.4% in the eplerenone groups, 0.4% in the placebo group, and 0.1% in the active-control group. A serum potassium level <3.5 mmol/L was reported in 1.0%–1.6% in the eplerenone group, 3.1% in the placebo group, and 6.5% in the active-control group. In Table 5, changes in serum potassium values are presented. Because patients with diabetes are considered at increased risk of hyperkalemia,²⁶ serum potassium level results for that specific patient population are also presented.

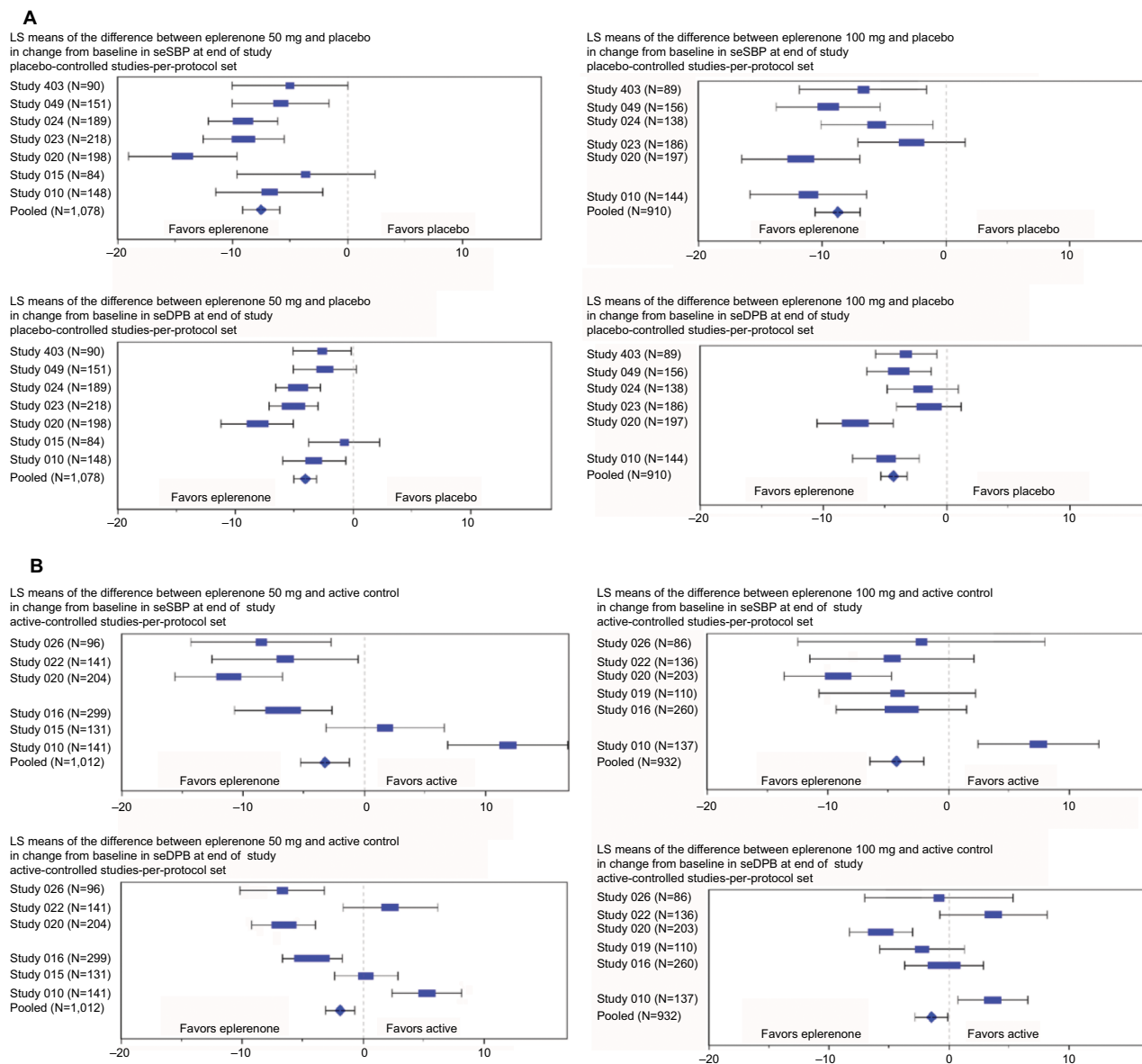


Figure 2 Change from baseline in seated SBP/DBP: **(A)** placebo-controlled studies and **(B)** active-controlled studies.
Notes: LS Means model includes Study, Treatment, and Baseline BP. The per-protocol analysis set included all patients who were randomly assigned to treatment (eplerenone 50 mg daily, eplerenone 100 mg daily, or active control), who had a baseline primary efficacy evaluation, took at least one dose of study drug, and received at least 6 weeks of fixed dose of study drug. Weight of blue symbol is defined as percentage study contribution to total pooled results. Study 015 is not represented in the eplerenone 100 mg analysis due to lack of treatment arm with that dosage. Study 019 is not represented in the eplerenone 50mg analysis due to lack of treatment arm with that dosage. See Table 3 for the 95% confidence intervals of differences in seated SBP/DBP between eplerenone and placebo.

Discussion

In this pooled analysis of patient-level data from the Phase III trials, only the data from the use of eplerenone at doses of 50 and 100 mg per day for a minimum of 6 weeks were compared against placebo (seven trials) or active comparators (seven trials) also with a stable dose of medication for a minimum of 6 weeks. The goal of this specific analysis was to document the efficacy of eplerenone at the approved doses for the treatment of primary hypertension, after stable dosing when the maximum pharmacodynamic response should have been reached. The safety evaluation of this analysis included

all randomized patients who took at least one dose of study drug, therefore, documenting safety in all treated patients, not just the ones who were able to tolerate therapy for a minimum of 6 weeks. In placebo-controlled trials, eplerenone 50 and 100 mg significantly lowered the BP compared with placebo. Similarly, eplerenone significantly lowered the BP more than the active comparators. These results are similar to those seen in study-level pooled analyses including dosages of eplerenone from 50 to 400 mg daily.^{27,28} Our descriptive secondary endpoint indicated that the percentage of patients controlled to the target BP of 140/90 was numerically greater

Table 5 Potassium laboratory values

Placebo-controlled studies			
	Placebo	Eplerenone 50 mg daily	Eplerenone 100 mg daily
N	715	489	430
Change from baseline in serum potassium (mean ± SE)	0.00 (0.013)	0.13 (0.017)	0.13 (0.018)
No. of patients with K ⁺ <3.5 mmol/L (%)	22 (3.1)	5 (1.0)	5 (1.2)
No. of patients with K ⁺ >5.5 mmol/L (%)	6 (0.8)	6 (1.2)	6 (1.2)
No. of patients with K ⁺ >6.0 mmol/L (%)	3 (0.4)	0 (0.0)	1 (0.2)
No. of patients with hypokalemia reported as an adverse event by the investigators (%)	2 (0.3)	1 (0.2)	2 (0.5)
No. of patients with hyperkalemia reported as an adverse event by the investigators (%)	3 (0.4)	7 (1.4)	2 (0.5)
No. of diabetic patients with K ⁺ <3.5 mmol/L (%)	0/57 (0.0)	0/26 (0.0)	0/30 (0.0)
No. of diabetic patients with K ⁺ >5.5 mmol/L (%)	1/57 (1.8)	1/26 (3.8)	0/30 (0.0)
No. of diabetic patients with K ⁺ >6.0 mmol/L (%)	0/57 (0.0)	0/26 (0.0)	0/30 (0.0)
Active-controlled studies			
	Active	Eplerenone 50 mg daily	Eplerenone 100 mg daily
N	876	322	266
Change from baseline in serum potassium (mean ± SE)	0.00 (0.013)	0.09 (0.020)	0.11 (0.024)
No. of patients with K ⁺ <3.5 mmol/L (%)	57 (6.5)	5 (1.6)	4 (1.5)
No. of patients with K ⁺ >5.5 mmol/L (%)	14 (1.6)	6 (1.9)	5 (1.9)
No. of patients with K ⁺ >6.0 mmol/L (%)	1 (0.1)	0 (0.0)	1 (0.4)
No. of patients with hypokalemia reported as an adverse event by the investigators (%)	8 (0.9)	1 (0.3)	2 (0.7)
No. of patients with hyperkalemia reported as an adverse event by the investigators (%)	3 (0.3)	1 (0.3)	4 (1.5)
No. of diabetic patients with K ⁺ <3.5 mmol/L (%)	4/85 (4.7)	0/20 (0.0)	0/10 (0.0)
No. of diabetic patients with K ⁺ >5.5 mmol/L (%)	1/85 (1.2)	2/20 (10.0)	0/10 (0.0)
No. of diabetic patients with K ⁺ >6.0 mmol/L (%)	0/85 (0.0)	0/20 (0.0)	0/10 (0.0)

with eplerenone than with placebo or active comparators. In the placebo-controlled studies, approximately 30% of patients were below target while on placebo, which is a common observation particularly in short-term studies.²⁹ In both placebo-controlled and active-controlled studies, the responder rate between eplerenone 50 mg daily and 100 mg daily suggests an apparent lack of dose response between the two approved doses, that is, response to the higher dose of eplerenone does not seem greater compared with the lower dose of eplerenone. However, Phase II studies are the studies generally used to assess dose–response associations in which patients are randomized to fixed doses of an antihypertensive agent. Only Phase III studies were used in this analysis and many of the studies used a design in which the study drugs were titrated to target BP and (three for the placebo-controlled studies and five for the active-controlled studies) in which each level of titration selects patients who are progressively more resistant to treatment. This difference in study design is responsible for the apparent blunting of the dose–response effect.

Overall, eplerenone was well tolerated; the tolerability was similar to that of placebo or active comparators. In the placebo-controlled studies, the most common AE was

headache, and the percentage of patients with headache was similar in the eplerenone-treated groups compared to the placebo-treated group. Some AEs appeared to be less common in the eplerenone 100 mg-treated patients compared with the eplerenone 50 mg-treated patients, but this may be the result of bias caused by the inclusion of titrate-to-target studies; patients would only be titrated up in dose if they had tolerated the lower dose thereby preselecting tolerant patients to receive higher doses. Despite the limitation of the titrate-to-effect studies regarding the evaluation of the dose–response for safety or efficacy, this trial design provides valid information about the effectiveness and tolerability for the clinicians, as it is indicative of how clinicians treat patients in a “real-world” setting.

The incidence of hyperkalemia was low and similar across all treatment arms. These results suggest that in patients with normal renal function, hyperkalemia is not frequently observed in the regulatory-approved doses. It must be noted that patients in this analysis had an estimated glomerular filtration rate (eGFR) of approximately 100 mL/min/1.73 m² and that patients with an eGFR <50 mL/min/1.73 m² or serum potassium >5.0 mmol/L before treatment were not enrolled in most of the hypertension studies.

The strength of this pooled analysis stems from the use of patient-level data that allowed the comparison of BP reductions from specific doses of eplerenone taken long enough for the pharmacologic action to reach steady state; similarly, the safety and tolerability of eplerenone and the comparators were also examined using patient-level rather than study-level data.

Despite the strengths of this patient-level pooled analysis, there are limitations. The population with diabetes was too small to make any definitive statements about the safety of eplerenone regarding hyperkalemia in that subgroup. The efficacy analysis of patients with diabetes, assessed by ANCOVA, suggested that the BP response to eplerenone was similar compared to the general population. However, the sample size of patients with diabetes prevented reaching this conclusion with great certainty. Patients with diabetes represent a large group who might receive eplerenone due to their relatively lower rate of reaching recommended target BPs and their higher risk of developing coronary artery disease, heart failure, and chronic kidney disease.

The studies from which the safety data were extracted were designed primarily to evaluate the efficacy of eplerenone and the comparative agents. Safety, tolerability, and adverse effects were secondary outcomes; it is certainly not possible to formally compare tolerability and safety between specific classes of antihypertensive medications, based on the relatively small number of studies for each individual comparative agent included in the analysis. Also, given that these comparative studies were conducted in the late 1990s and early 2000s, there are no studies with some of the newer medications used now such as telmisartan or olmesartan. However, a report using NHANES 2001–2010 data stated that the most commonly used antihypertensive drugs were lisinopril (20.1%), metoprolol (15.1%), hydrochlorothiazide (10.7%), and amiloride (10.4%).³⁰ The most commonly used A-II antagonist was valsartan at 5.2%, so the data from the Eplerenone Hypertension Clinical Program used in this pooled analysis can still likely be considered contemporary.

Clinicians may wonder how eplerenone compares to spironolactone, another mineralocorticoid antagonist, for the treatment of primary hypertension. Eplerenone is an aldosterone receptor antagonist that binds selectively to human mineralocorticoid receptors relative to its binding to glucocorticoid, progesterone, and androgen receptors. In vitro, eplerenone has a markedly lower binding affinity for these latter receptors compared with spironolactone, thus reducing

the risk of endocrine AEs (eg, gynecomastia, breast pain, impotence, menstrual disorders, dyslipidemia, or increased blood sugar). There are limited clinical data with respect to the dosage equivalency between eplerenone and spironolactone. One study comparing eplerenone to spironolactone was included in this pooled analysis. Weinberger et al evaluated the safety and efficacy of eplerenone and spironolactone in patients with mild-to-moderate hypertension.³¹ Changes from baseline in SBP and DBP for eplerenone 100 mg daily were approximately 50%–75% of those observed with the spironolactone 100 mg daily. The inclusion of spironolactone as a positive control in this placebo-controlled study confirmed and validated the BP-lowering effects of eplerenone. However, the primary efficacy variable was the change from baseline in DBP compared with placebo, and therefore the study was not powered to detect differences between the two MRA groups on efficacy or on AEs. There is currently no comparative mortality and morbidity data for eplerenone vs spironolactone in the treatment of primary hypertension; therefore, the use of one agent over the other should be guided by pharmacologic profiles and individual patient considerations and needs.

This patient-level pooled analysis assessing specific dosages provided a clearer picture of what physicians and patients can expect when using approved doses of eplerenone compared to other antihypertensive agents in regards to BP reduction as well as tolerability and safety.

Conclusion

This individual patient-level pooled analysis provided robust evidence that eplerenone, at 50 mg or 100 mg daily, evaluated in monotherapy studies or studies in combination with other antihypertensive agents, was effective in lowering BP in patients with mild-to-moderate hypertension and was well tolerated. This effect was slightly greater for eplerenone compared with the other antihypertensive agents evaluated. The present analysis suggests that selective mineralocorticoid receptor blockade with eplerenone can be safely used and is an effective therapeutic option for patients with hypertension, which may be of particular importance in those individuals in whom the blockade of aldosterone effects could prove clinically beneficial.

Acknowledgments

This analysis was sponsored by Pfizer. The studies included in this pooling analysis were sponsored by G.D. Searle & Co. and Pharmacia, which were acquired by Pfizer.

Disclosure

Drs MF, BB, PA, KL, and JV report being employees of Pfizer and receiving stock options and travel reimbursements from Pfizer. Dr EB is a paid consultant for several companies that manufacture drugs used in the treatment of hypertension and in this capacity has received travel assistance to attend advisory board meetings. She has also received honoraria and other compensation from several companies for conducting research, as well as speaker fees and educational grants. The authors report no other conflicts of interest in this work.

References

- Go AS, Bauman MA, Coleman King SM, et al. An effective approach to high blood pressure control: A science advisory from the American Heart Association, the American College of Cardiology, and the Centers for Disease Control and Prevention. *J Am Coll Cardiol*. 2014;63(12):1230–1238.
- Kostis JB, Cabrera J, Cheng JQ, et al. Association between chlorthalidone treatment of systolic hypertension and long-term survival. *JAMA*. 2011;306(23):2588–2593.
- Mcalister FA, Wilkins K, Joffres M, et al. Changes in the rates of awareness, treatment and control of hypertension in Canada over the past two decades. *CMAJ*. 2011;183(9):1007–1013.
- Tu K, Campbell NRC, Duong-Hua M, Mcalister FA. Hypertension management in the elderly has improved - Ontario prescribing trends, 1994-2002. *Hypertension*. 2005;45:1113–1118.
- Oliveras A, Armario P, Lucas S, de La Sierra A, COMBICONTROL Study Investigators. Blood pressure control is similar in treated hypertensive patients with optimal or with high-normal albuminuria. *Am J Hypertens*. 2014;27(9):1185–1190.
- Clinical practice guidelines for the management of hypertension in the community: a statement by the American Society of Hypertension and the International Society of Hypertension. *J Clin Hypertens*. 2014;16:14–26.
- SPRINT Research Group, Wright JT, Williamson JD, et al. A randomized trial of intensive versus standard blood-pressure control. *N Engl J Med*. 2015;373(22):2103–2116.
- ACCORD Study Group, Cushman WC, Evans GW, et al. Effects of intensive blood-pressure control in type 2 diabetes mellitus. *N Engl J Med*. 2010;362(17):1575–1585.
- Burgess E. Eplerenone in hypertension. *Expert Opin Pharmacother*. 2004;5(12):2573–2581.
- Jansen PM, Frenkel WJ, van den Born BJ, et al. Determinants of blood pressure reduction by eplerenone in uncontrolled hypertension. *J Hypertens*. 2013;31(2):404–413.
- Karns AD, Bral JM, Hartman D, Peppard T, Schumacher C. Study of aldosterone synthase inhibition as an add-on therapy in resistant hypertension. *J Clin Hypertens*. 2013;15(3):186–192.
- Williams B, Macdonald TM, Morant S, et al. Spironolactone versus placebo, bisoprolol, and doxazosin to determine the optimal treatment for drug-resistant hypertension (PATHWAY-2): a randomised, double-blind, crossover trial. *Lancet*. 2015;386(10008):2059–2068.
- Bomback AS, Klemmer PJ. The incidence and implications of aldosterone breakthrough. *Nat Clin Pract Nephrol*. 2007;3(9):486–492.
- Zannad F, McMurray JJ, Krum H, et al. Eplerenone in patients with systolic heart failure and mild symptoms. *N Engl J Med*. 2011;364(1):11–21.
- Pitt B, Zannad F, Remme WJ, et al. The effect of spironolactone on morbidity and mortality in patients with severe heart failure. Randomized Aldactone Evaluation Study Investigators. *N Engl J Med*. 1999;341(10):709–717.
- Pitt B, Remme W, Zannad F, et al. Eplerenone, a selective aldosterone blocker, in patients with left ventricular dysfunction after myocardial infarction. *N Engl J Med*. 2003;348(14):1309–1321.
- Batterink J, Stabler SN, Tejani AM, Fowkes CT. Spironolactone for hypertension. *Cochrane Database Syst Rev*. 2010(8):CD008169.
- Croom KF, Perry CM. Eplerenone: a review of its use in essential hypertension. *Am J Cardiovasc Drugs*. 2005;5(1):51–69.
- Rafestini-Oblin ME, Rudolph A, Faggart J. Eplerenone: a selective aldosterone blocker. *J Hypertens*. 2003;21(Suppl 4):202.
- de Gasparo M, Joss U, Ramjouw HP, et al. Three new epoxy-spirolactone derivatives: characterization in vivo and in vitro. *J Pharmacol Exp Ther*. 1987;240(2):650–656.
- Garthwaite SM, McMahan EG. The evolution of aldosterone antagonists. *Mol Cell Endocrinol*. 2004;217(1–2):27–31.
- Pfizer Canada Inc., INSPRA Product Monograph. 2014.
- Yamaji M, Tsutamoto T, Kawahara C, Nishiyama K, Yamamoto T, Fujii M, Horie M. Effect of eplerenone versus spironolactone on cortisol and hemoglobin A1(c) levels in patients with chronic heart failure. *Am Heart J*. 2010;160(5):915–921.
- Lainscak M, Pelliccia F, Rosano G, et al. Safety profile of mineralocorticoid receptor antagonists: spironolactone and eplerenone. *Int J Cardiol*. 2015;200:25–29.
- Jankowska EA, Biel B, Majda J, et al. Anabolic deficiency in men with chronic heart failure: prevalence and detrimental impact on survival. *Circulation*. 2006;114:1829–1837.
- Pfizer Inc., INSPRA US Package Insert. 2016.
- Pelliccia F, Patti G, Rosano G, Greco C, Gaudio C. Efficacy and safety of eplerenone in the management of mild to moderate arterial hypertension: systematic review and meta-analysis. *Int J Cardiol*. 2014;177(1):219–228.
- Tam TS, Wu MH, Masson SC, et al. Eplerenone for hypertension. *Cochrane Database Syst Rev*. 2017;2:CD008996.
- Preston RA, Materson BJ, Reda DJ, Williams DW. Placebo-associated blood pressure response and adverse effects in the treatment of hypertension: observations from a Department of Veterans Affairs Cooperative Study. *Arch Intern Med*. 2000;160(10):1449–1454.
- Gu Q, Burt VL, Dillon CF, Yoon S. Trends in antihypertensive medication use and blood pressure control among United States adults with hypertension. The National Health and Nutrition Evaluation Survey, 2001-2010. *Circulation*. 2012;126(17):2105–2114.
- Weinberger MH et al. Eplerenone, a selective aldosterone blocker, in mild-to-moderate hypertension. *Am J Hypertens*. 2002;15:709–716.

Supplementary materials

Table S1 Adequate and well-controlled studies included in pooled analysis

Study grouping	Study number	Eplerenone dose ^a	Placebo control (doses)	Coadministration	Dosing protocol	Double-blind treatment duration	Key blood pressure inclusion criteria
Placebo-controlled, fixed-dose monotherapy	010 ¹	50, 100, 400 mg QD	Spirolactone (50 mg BID)		Fixed dose (dose ranging)	8 weeks	Sitting DBP of ≥ 95 mmHg and < 114 mmHg
	049 ²	25, 50, 100, 200 mg	X		Fixed dose (dose ranging)	12 weeks	Sitting DBP ≥ 95 mmHg and < 110 mmHg and untreated mean sitting SBP < 180 mmHg
	403 ³	50, 100, 200 mg QD	X		Fixed dose (dose ranging)	8 weeks	Sitting DBP ≥ 95 mmHg and < 115 mmHg
Placebo-controlled, titration-to-effect monotherapy	015 (Pfizer Inc. Data on file [E3-01-06-015 August 23, 2001])	25, 50, 200 mg	HCTZ (12.5, 25 mg)	HCTZ	Fixed dose (factorial design)	8 weeks	Sitting DBP of ≥ 95 mmHg and < 110 mmHg
	020 ⁴	50, 100, 200 mg	Losartan (50, 100 mg)		Titration-to-effect	16 weeks	Sitting DBP ≥ 95 mmHg and < 110 mmHg and a mean sitting SBP < 180 mmHg
Placebo-controlled coadministration with other antihypertensives	023 ⁵	50, 100 mg	X	ACE-I or A-II antagonist	Titration-to-effect	8 weeks	Sitting DBP ≥ 95 mmHg and < 110 mmHg and a mean sitting SBP < 180 mmHg
	024 (Pfizer Inc. Data on file [IE3-99-02-024, October 10, 2001])	50, 100 mg	X	BB or CCB	Titration-to-effect	8 weeks	Sitting DBP ≥ 95 mmHg and < 110 mmHg and a mean sitting SBP < 180 mmHg
Active-controlled, fixed-dose monotherapy	010 ¹	50, 100, 400 mg QD	Spirolactone (50 mg BID)		Fixed dose (dose ranging)	8 weeks	Sitting DBP of ≥ 95 mmHg and ≤ 114 mmHg
	015 (Pfizer Inc. Data on file [E3-01-06-015 August 23, 2001])	25, 50, 200 mg	X	HCTZ (12.5, 25 mg)	Fixed dose (factorial design)	8 weeks	Sitting DBP of ≥ 95 mmHg and < 110 mmHg
Active-controlled, titration-to-effect monotherapy	020 ⁴	50, 100, 200 mg	Losartan (50, 100 mg)		Titration-to-effect	16 weeks	Sitting DBP ≥ 95 mmHg and < 110 mmHg and a mean sitting SBP < 180 mmHg
	019 ⁶	100, 200 mg	Losartan (50, 100 mg)		Titration-to-effect	16 weeks	Sitting DBP ≥ 90 mmHg and < 115 mmHg and a mean SBP < 200 mmHg
Active-controlled, without placebo	016 ⁷	25, 50, 100, 200 mg	Enalapril (5, 10, 20, 40 mg)		Titration-to-effect	12 months	Sitting DBP ≥ 95 mmHg and < 110 mmHg and a mean sitting SBP < 190 mmHg
	022 ⁸	50, 100, 200 mg	Amlodipine (2.5, 5, 10 mg)		Titration-to-effect	24 weeks	Sitting SBP ≥ 150 mmHg and < 165 mmHg, and PP ≥ 70 mmHg or Sitting SBP ≥ 165 mmHg and < 200 mmHg, and DBP < 95 mmHg
	026 (Pfizer Inc. Data on file [IE3-99-02-026, October 21, 2001])	50, 100, 200 mg	Amlodipine (2.5, 5, 10 mg)		Titration-to-effect	16 weeks	Sitting DBP ≥ 95 mmHg and < 110 mmHg and a mean sitting SBP < 180 mmHg

Note: ^aAll regimens were QD unless otherwise noted.

Abbreviations: A-II antagonist; angiotensin II antagonist; ACE-I, angiotensin-converting enzyme inhibitor; BB, beta blocker; CCB, calcium-channel blocker; DBP, diastolic BP; HCTZ, hydrochlorothiazide; PP, pulse pressure; SBP, systolic BP.

Table S2 Other controlled studies not included in pooled analysis

Study grouping	Study	Eplerenone doses	Active control doses	Open-label additional antihypertensives	Dosing protocol	Double-blind treatment duration	Reason for not including in pooled analysis
Secondary hypertension due to primary hyperaldosteronism	018 ⁹	100, 200, 300 mg		Spironolactone (75, 150, 225 mg)		Titration-to-effect 16 weeks	Study population outside approved indication
Target organ damage	017 ¹⁰	50→100→200 mg QD	Enalapril (10→20→40 mg QD) OR Enalapril 10 mg QD with eplerenone 50 mg →100 mg →200 mg QD	HCTZ, amlodipine	Forced up-titration	9 months	Study conducted in hypertensive patients with left ventricular hypertrophy, a subpopulation not included in label
	021 (Pfizer Inc. Data on file [IE3-99-02-021, October 19, 2001])	50→100→200 mg QD	Enalapril (10→20→40 mg QD) OR Enalapril 10 mg QD with eplerenone 50 mg →100 mg →200 mg QD	HCTZ, amlodipine	Forced up-titration	24 weeks	Study conducted in hypertensive patients with MAU, a subpopulation contraindicated in label
	067 ¹¹	50, 100 mg QD	Enalapril (20 mg QD) OR Enalapril 20 mg QD with either eplerenone 50 mg QD, or 100 mg QD	Amlodipine	Fixed dose	12 weeks	Study conducted in hypertensive patients with MAU, a subpopulation contraindicated in label

Abbreviations: HCTZ, hydrochlorothiazide; MAU, microalbuminuria.

Table S3 Uncontrolled studies not included in pooled analysis

Study grouping	Study	Dose ^a	Placebo control	Active control (doses)	Coadministration	Dosing protocol	Treatment duration	Reason for not including in pooled analysis
Open-label, safety	025 ¹²	50, 100, 200 mg	None	None	Various antihypertensives (if BP uncontrolled with 200-mg dose)	Titration-to-effect	14 months	Not a controlled study
	061 (Pfizer Inc. Data on file [JE3-01-02-061 –09 June 2005])	50, 100, 200 mg	None	None	Various antihypertensives (if BP uncontrolled with 200-mg dose)	Titration-to-effect	12 months	Not a controlled study

Note: ^aAll regimens were QD.

Abbreviation: BP: blood pressure.

References

- Weinberger MH, Roniker B, Krause SL, Weiss RJ. Eplerenone, a selective aldosterone blocker, in mild-to-moderate hypertension. *Am J Hypertens.* 2002;15:709–716.
- White WB, Carr AA, Krause S, et al. Assessment of the novel selective aldosterone blocker eplerenone using ambulatory and clinical blood pressure in patients with systemic hypertension. *Am J Cardiol.* 2003;92:38–42.
- Saruta T, Kageyama S, Ogihara T, et al. Efficacy and safety of the selective aldosterone blocker eplerenone in Japanese patients with hypertension: a randomized, double-blind, placebo-controlled, dose-ranging study. *J Clin Hypertens.* 2004;6(4):175–183.
- Flack JM, Oparil S, Pratt H, et al. Efficacy and tolerability of eplerenone and losartan in hypertensive black and white patients. *J Am Coll Cardiol.* 2003;41:1148–1155.
- Krum H, Nolly H, Workman D, He W, Roniker B, Krause S, Fakouhi K. Efficacy of eplerenone added to renin-angiotensin blockade in hypertensive patients. *Hypertension* 2002;40(2):117–123.
- Weinberger MH, White W, Ruilope LM, et al. Effects of eplerenone vs losartan in patients with low-renin hypertension. *Am Heart J* 2005;150:426–433.
- Williams GH, Burgess E, Kolloch RE, et al. Efficacy of eplerenone vs enalapril as monotherapy in systemic hypertension. *Am J Cardiol* 2004;93:990–996.

8. White W, Duprez D, St-Hillaire R, et al. Effects of the selective aldosterone blocker eplerenone vs the calcium antagonist amlodipine in systolic hypertension. *Hypertension* 2003;41:1021–1026.
9. Parthasarathy HK, Menard J, White WB, et al. A double-blind, randomized study comparing the antihypertensive effect of eplerenone and spironolactone in patients with hypertension and evidence of primary aldosteronism. *J Hypertens*. 2011;29(5):980–990.
10. Pitt B, Reichek N, Willenbrock RW, et al. Effects of eplerenone, enalapril, and eplerenone/enalapril in patients with essential hypertension and left ventricular hypertrophy: the 4E-Left Ventricular Hypertrophy Study. *Circulation*. 2003;108:1831–1838.
11. Epstein M, Williams G, Weinberger M, et al. Selective aldosterone blockade with eplerenone reduces albuminuria in patients with type two diabetes. *Clin J Am Soc Nephrol*. 2006;1(5):940–951.
12. Burgess E, Lacourcière Y, Ruilope-Urioste M, et al. Long-term safety and efficacy of the selective aldosterone blocker eplerenone in patients with essential hypertension. *Clin Ther*. 2003;25:2388–2404.

Vascular Health and Risk Management

Dovepress

Publish your work in this journal

Vascular Health and Risk Management is an international, peer-reviewed journal of therapeutics and risk management, focusing on concise rapid reporting of clinical studies on the processes involved in the maintenance of vascular health; the monitoring, prevention and treatment of vascular disease and its sequelae; and the involvement of

metabolic disorders, particularly diabetes. This journal is indexed on PubMed Central and MedLine. The manuscript management system is completely online and includes a very quick and fair peer-review system, which is all easy to use. Visit <http://www.dovepress.com/testimonials.php> to read real quotes from published authors.

Submit your manuscript here: <https://www.dovepress.com/vascular-health-and-risk-management-journal>