

# Increased IL-17-producing CD8<sup>+</sup> T cell frequency predicts short-term mortality in patients with hepatitis B virus-related acute-on-chronic liver failure

Geng-lin Zhang<sup>1,2,\*</sup>Ting Zhang<sup>3,\*</sup>Qi-yi Zhao<sup>1,2</sup>Chan Xie<sup>1,2</sup>Chao-shuang Lin<sup>1,2</sup>Zhi-liang Gao<sup>1,2,4</sup>

<sup>1</sup>Department of Infectious Diseases, The Third Affiliated Hospital of Sun Yat-sen University, Guangzhou, China;

<sup>2</sup>Guangdong Provincial Key Laboratory of Liver Disease, The Third Affiliated Hospital of Sun Yat-sen University, Guangzhou, China; <sup>3</sup>Department of Ultrasound, The Third Affiliated Hospital of Sun Yat-sen University, Guangzhou, China; <sup>4</sup>Key Laboratory of Tropical Disease Control, Sun Yat-sen University, Ministry of Education, Guangzhou, China

\*These authors contributed equally to this work

**Background:** IL-17-producing CD8<sup>+</sup> T (Tc17) cells promote inflammation and have been identified in chronic hepatitis. However, the role of Tc17 cells in patients with hepatitis B virus (HBV)-related acute-on-chronic liver failure (HBV-ACLF) remains unclear.

**Methods:** The frequency of Tc17 cells in blood samples from 66 patients with HBV-ACLF was determined by flow cytometry. The levels of Tc17 cell-related cytokines were measured by FlowCytomix assays. The prognostic prediction accuracy was evaluated by the receiver operating characteristic (ROC) curve analysis. Survival was analyzed using Kaplan–Meier curves. Mortality predictors were determined by the Cox regression analysis.

**Results:** The frequency of Tc17 cells was markedly higher in patients with HBV-ACLF than in those with chronic hepatitis B and normal control subjects. Increased frequencies of Tc17 cells may indicate liver injury and were positively correlated with disease severity. The Tc17 cell frequency was significantly higher in non-surviving patients with HBV-ACLF than in surviving patients. The ROC curve analysis showed that Tc17 cell frequency accurately predicted 90-day survival in patients with HBV-ACLF, with an accuracy equivalent to those of the Model for End-Stage Liver Disease (MELD), MELD-Na, and Chronic Liver Failure Consortium ACLF scores. Kaplan–Meier analysis showed an association between the increase in circulating Tc17 cells and poor overall survival in patients with HBV-ACLF. Moreover, the multivariate Cox regression analysis showed that Tc17 cell frequency was an independent predictor of overall survival in patients with HBV-ACLF.

**Conclusion:** Tc17 cells may play a proinflammatory role in HBV-ACLF pathogenesis. Furthermore, the increased frequency of circulating Tc17 cells could be an independent prognostic biomarker in patients with HBV-ACLF.

**Keywords:** liver disease, inflammation, prognosis, T cells

## Introduction

Acute-on-chronic liver failure (ACLF) is a severe clinical syndrome characterized by the acute deterioration of preexisting chronic liver diseases and is linked with substantial short-term mortality.<sup>1</sup> In China, HBV-related ACLF (HBV-ACLF) accounts for most patients because of the high prevalence of HBV infection.<sup>2</sup> The lack of knowledge on the mechanism underlying HBV-ACLF and the lack of effective treatment result in extremely high mortality.<sup>3</sup> Accumulating evidence has shown that systemic inflammation caused by excessive immune-mediated inflammation plays a central role in the mechanism underlying HBV-ACLF. Moreover, systemic inflammation has been

Correspondence: Zhi-liang Gao  
Department of Infectious Diseases,  
The Third Affiliated Hospital of Sun  
Yat-sen University, 600# Tianhe Road,  
Guangzhou 510630, Guangdong, China  
Email zhilianggao@21cn.com

found to be associated with disease progression and mortality in patients with HBV-ACLF.<sup>1,2,4,5</sup>

IL-17 has been researched intensely since its discovery. IL-17 is a proinflammatory cytokine that participates in both acute and chronic inflammatory responses and is mainly produced by a subset of CD4<sup>+</sup> T cells (namely, Th17 cells);<sup>6</sup> however, other immune cells, including CD8<sup>+</sup> T cells (namely, Tc17 cells), can also express IL-17.<sup>7,8</sup> Tc17 cells have been detected in several autoimmune diseases in both humans and mice,<sup>9,10</sup> thus confirming their role in inflammatory processes. In addition, the accumulation of Tc17 cells has been observed in several types of human tumors.<sup>11</sup> Furthermore, Tc17 cells were found to protect the host against lethal influenza infection.<sup>12</sup> Tc17 cells were found to be enriched in the liver of patients with chronic HCV infection, and the frequency of intrahepatic Tc17 cells was significantly higher than that in the peripheral blood.<sup>13</sup> Intrahepatic Tc17 cells increased in other chronic liver diseases, including alcoholic liver disease, non-alcoholic steatohepatitis, and autoimmune hepatitis. Moreover, the CXCR3 pathway could promote recruitment of Tc17 cells from the blood into the liver.<sup>14</sup> However, less is known about the role and clinical relevance of Tc17 cells in patients with HBV-ACLF.

On the basis of these collective and emerging data, we hypothesized that Tc17 cells may be implicated in the pathogenesis of HBV-ACLF. The main aim of the current study was to evaluate the role and the prognostic value of Tc17 cells in patients with HBV-ACLF.

## Methods

### Study design and patients

Sixty-six patients with HBV-ACLF admitted to our department between April 2009 and August 2014 were enrolled. HBV-ACLF was diagnosed on the basis of the development of jaundice (a Tbil of  $\geq 171$   $\mu\text{mol/L}$ ), a PTA of  $\leq 40\%$ , and the presence of at least one of the other criteria ( $\geq$  grade 2 hepatic encephalopathy, ascites, spontaneous bacterial peritonitis, or hepatorenal syndrome).<sup>15,16</sup> The exclusion criteria were 1) evidence of other liver diseases or cancer; 2) coinfection with other hepatitis viruses or HIV; 3) treatment with artificial liver support or immunomodulatory drugs; 4) drug or alcohol abuse; 5) history of cardiovascular, pulmonary, or renal diseases; and 6) pregnancy. Cirrhosis was clinically diagnosed when a small, nodular liver was observed in imaging tests, including ultrasound, computerized tomography scans, or magnetic resonance imaging.<sup>17</sup> Each patient was treated with supportive internal treatment. All patients with HBV-ACLF were followed up for at least 3 months.

The patients' outcomes were recorded as surviving or non-surviving. Thirty patients with CHB and 17 NC during the same period were enrolled as controls. Patients with CHB were defined as those who had showed HBsAg positivity for more than 6 months and exhibited signs of hepatitis and abnormal liver function. A clinical assessment was performed and peripheral blood was collected at admission. Serum was separated and stored at  $-80^{\circ}\text{C}$  until analysis. The study was conducted in accordance with the guidelines of the Declaration of Helsinki, and the protocol was approved by the ethics committee of our hospital (The Third Affiliated Hospital of Sun Yat-sen University). Written informed consent was obtained from each participant.

### Cell staining and flow cytometry

An APC-conjugated anti-CD8 antibody was purchased from BD Biosciences (San Jose, CA, USA). A PerCP-Cy5.5-conjugated anti-CD3 antibody and a phycoerythrin-conjugated anti-IL-17A antibody were purchased from eBioscience (San Diego, CA, USA). Fresh heparinized peripheral blood was incubated in RPMI 1640 medium supplemented with phorbol 12-myristate 13-acetate (20 ng/mL; Sigma-Aldrich Co., St Louis, MO, USA) and ionomycin (1  $\mu\text{g/mL}$ ; Sigma-Aldrich Co.) for 5 hours at  $37^{\circ}\text{C}$  and 5%  $\text{CO}_2$ . Monensin (1.7  $\mu\text{g/mL}$ ; Sigma-Aldrich Co.) was added during the first hour of incubation. Intracellular IL-17A staining was performed after fixation and permeabilization using Fix&Perm reagents (Thermo Fisher Scientific, Waltham, MA, USA). Data were collected on a FACSCalibur and analyzed with CELLQUEST software (BD Biosciences).

### Cytokine analysis by FlowCytomix

Levels of serum cytokines (IL-17A, IL-22, and IL-23) were quantified using FlowCytomix<sup>TM</sup> kits (Bender MedSystems, Vienna, Austria) according to the manufacturer's instructions. Data were collected on a FACSCalibur and analyzed with FlowCytomix Pro software (Bender MedSystems). Standard curves were determined for each cytokine. The detection sensitivity was 2.5 pg/mL for the IL-17A kit, 43.3 pg/mL for the IL-22 kit, and 21.9 pg/mL for the IL-23 kit.

### Virological assessment and liver biochemical assays

The levels of serum HBV markers (including HBsAg, HBeAg, HBeAb, and HBcAb) and AFP were measured using an Elecsys system (Hoffman-La Roche Ltd., Basel, Switzerland). HBV-DNA levels were quantitated with RT-PCR using an ABI7300 instrument (Thermo Fisher

Scientific). The detection limit of HBV-DNA was 100 IU/mL. Biochemical assays were performed using an autoanalyzer (TBA-30FR; Toshiba, Tokyo, Japan). PTA was measured using an automatic hemostasis/thrombosis analyzer (STA Compact, Holliston, MA, USA).

### Disease severity assessment

MELD, MELD-Na, and CLIF-C ACLF scores were used to assess disease severity.<sup>18,19</sup> Briefly, these scores were calculated as follows: MELD score =  $3.8 \times \ln(\text{bilirubin [mg/dL]}) + 11.2 \times \ln(\text{INR}) + 9.6 \times \ln(\text{creatinine [mg/dL]}) + 6.4 \times (\text{etiology: 0 if cholestatic or alcoholic, 1 otherwise})$ ; MELD-Na score =  $\text{MELD score} - \text{Na} - 0.025 \times \text{MELD} \times (140 - \text{Na}) + 140$ ; and CLIF-C ACLF score =  $10 \times (0.33 \times \text{CLIF-OFs} + 0.04 \times \text{Age} + 0.63 \times \ln[\text{WBC count}] - 2)$ .

### Statistical analyses

Data were analyzed using SPSS version 20.0 (IBM Corporation, Armonk, NY, USA) and were expressed as frequencies, medians, and ranges or mean  $\pm$  standard deviations. Differences in variables were analyzed with ANOVA and Student's *t*-tests or with Kruskal–Wallis tests and Mann–Whitney *U* tests. Correlations were evaluated by Pearson or Spearman tests. ROC curves were used to predict prognosis. Comparisons of ROC curve parameters were performed using the DeLong test. Survival was analyzed using Kaplan–Meier curves. The association between relevant variables and mortality was investigated by the multivariate Cox regression analysis. Two-sided *P*-values of  $<0.05$  were considered statistically significant.

## Results

### Patients' characteristics

The median age of the patients with HBV-ACLF was 41 years (range 18–75). During the follow-up period, 28 patients with HBV-ACLF survived, while 38 died. Thus, the overall mortality rate was 57.6%. Sixteen (24.2%) patients with HBV-ACLF were clinically diagnosed with cirrhosis before enrollment. The mortality rate was lower in patients without cirrhosis (25/50, 50%) than in those with cirrhosis (13/16, 81%,  $P=0.041$ ). The baseline characteristics of the participants are shown in Table 1. No significant differences existed among the three groups in age ( $P=0.151$ ) or gender ( $P=0.690$ ).

### Tc17 cell frequency was significantly higher in patients with HBV-ACLF independent of HBeAg status

We measured the frequency of Tc17 cells by flow cytometry (Figure 1). Tc17 cells were significantly higher in patients with HBV-ACLF (median 1.84%, range 0.36%–7.48%)

**Table 1** Characteristics of participants enrolled in the study

Group	NC (n=17)	CHB (n=30)	HBV-ACLF (n=66)
Male, n (%)	16 (94)	29 (97)	60 (91)
Age (years)	38.76 $\pm$ 8.79	37.90 $\pm$ 7.99	41 (18–75)
ALT (U/L)	21.47 $\pm$ 7.23	154.5 (27–1,658)	159.5 (15–1,986)
AST (U/L)	23.23 $\pm$ 7.55	136 (39–751)	172.5 (45–3,023)
Tbil ( $\mu$ mol/L)	N.D.	96.99 (15.51–602.08)	511.6 (183.8–1,301.7)
PTA (%)	N.D.	81.23 $\pm$ 22.15	30 (17–40)
ALB (g/L)	N.D.	39.36 $\pm$ 3.95	35.73 $\pm$ 5.28
Cr ( $\mu$ mol/L)	N.D.	62.8 (41.7–142)	64 (34.5–161)
HBeAg positive	0	30	66
HBeAg negative	0	22	28
HBV-DNA (log <sub>10</sub> IU/mL)	N.D.	4.98 $\pm$ 1.07	4.85 (2.70–8.39)

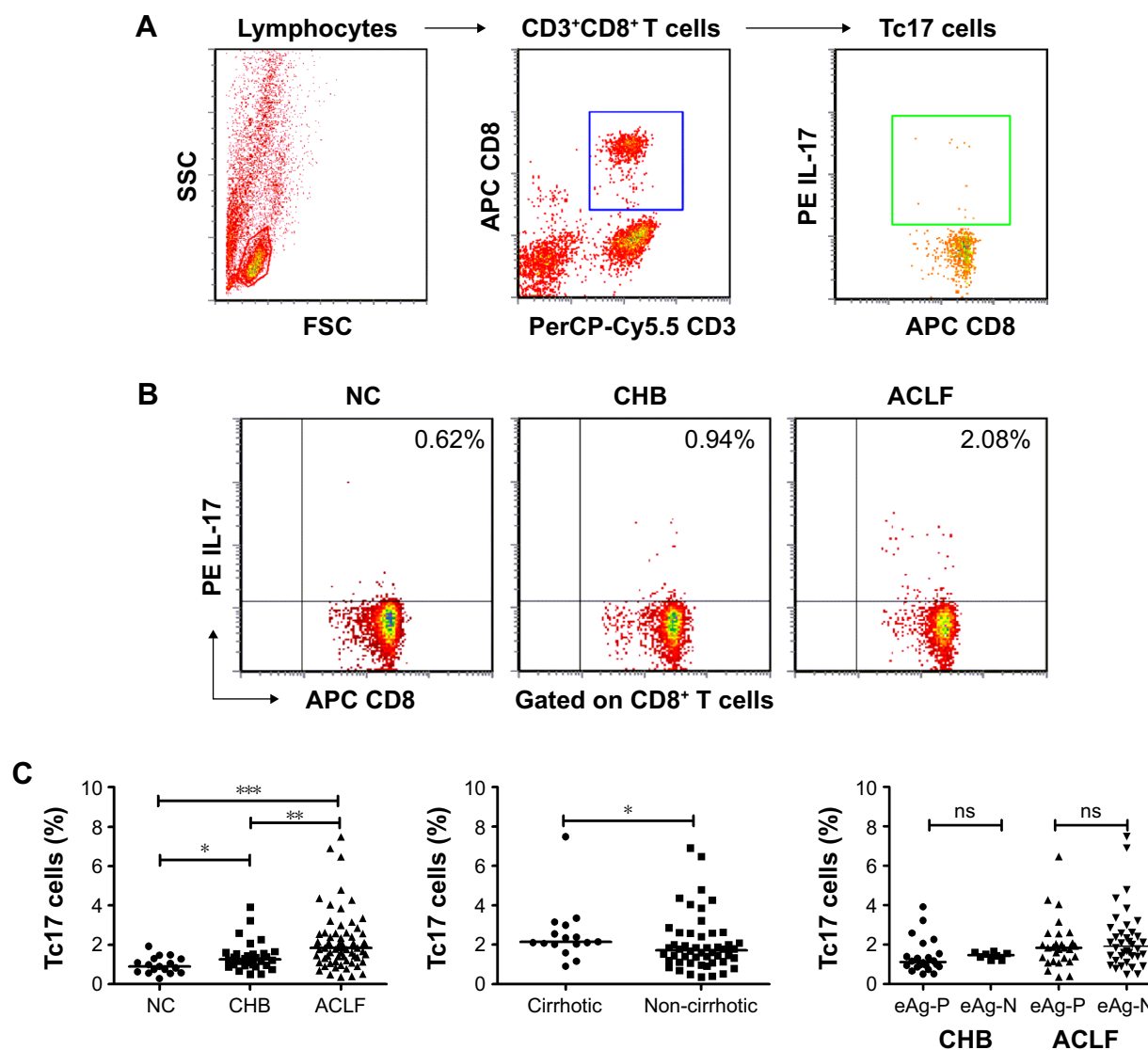
**Note:** Data are shown as mean and standard deviations or medians and ranges.

**Abbreviations:** ACLF, acute-on-chronic liver failure; ALB, albumin; ALT, alanine aminotransferase; AST, aspartate aminotransferase; CHB, chronic hepatitis B; Cr, creatinine; HBV, hepatitis B virus; NC, normal control; N.D., not determined; PTA, prothrombin time activity; Tbil, total bilirubin.

than in either patients with CHB (median 1.26%, range 0.5%–3.91%;  $P=0.002$ ) or NC subjects (0.96% $\pm$ 0.42%,  $P<0.001$ ; Figure 1C). Moreover, the frequency of Tc17 cells was significantly higher in cirrhotic patients with HBV-ACLF (median 2.13%, range 0.91%–7.48%) than in non-cirrhotic patients with HBV-ACLF (median 1.72%, range 0.36%–6.90%;  $P=0.034$ ; Figure 1C). We then determined the correlation between HBeAg status and Tc17 cell frequency. The Tc17 cell frequency did not differ between HBeAg-positive and HBeAg-negative patients with either CHB ( $P=0.097$ ) or HBV-ACLF ( $P=0.496$ ; Figure 1C).

### Tc17 cells may play a proinflammatory role in the pathogenesis of HBV-ACLF

We subsequently analyzed the correlation between Tc17 cell levels and Tbil levels, PTA levels, ALB levels, AST levels, ALT levels, and HBV-DNA loads in patients with CHB and patients with HBV-ACLF. Tc17 cells were found to be associated with Tbil ( $r=0.346$ ,  $P=0.061$ ), PTA ( $r=-0.549$ ,  $P=0.002$ ), AST ( $r=0.414$ ,  $P=0.023$ ), and ALB levels ( $r=-0.412$ ,  $P=0.024$ ; Figure 2A) in patients with CHB. Additionally, significant correlations were found between Tc17 cells and Tbil ( $r=0.357$ ,  $P=0.003$ ), PTA ( $r=-0.316$ ,  $P=0.010$ ), AST ( $r=0.251$ ,  $P=0.042$ ), and ALB levels ( $r=-0.330$ ,  $P=0.007$ ; Figure 2B) in patients with HBV-ACLF. However, no significant correlation was observed between Tc17 levels and either ALT levels or HBV-DNA loads in CHB and HBV-ACLF patients. Next, we examined the correlation between clinical outcome and Tc17 cell frequency at admission. The frequencies of Tc17



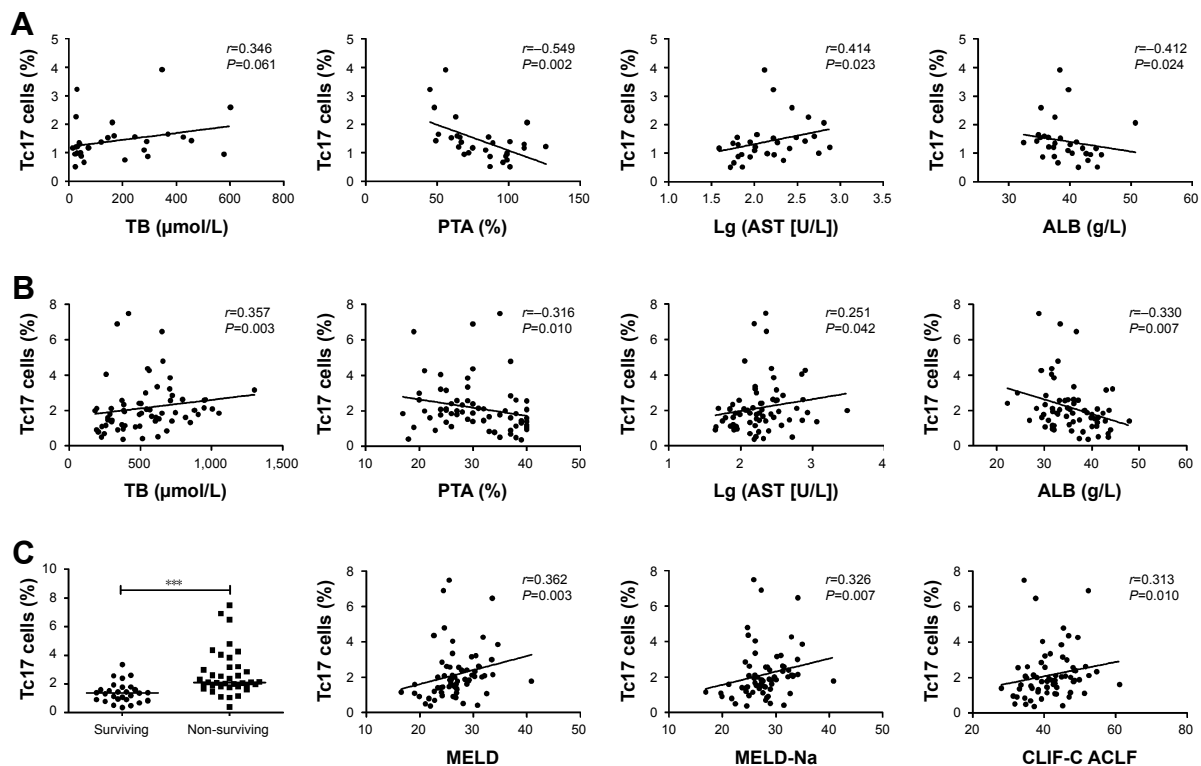
**Figure 1** Tc17 cell frequency was significantly higher in patients with HBV-ACLF.

**Notes:** (A) Tc17 cells were analyzed by flow cytometry. In this study, Tc17 cells were defined as CD3<sup>+</sup> CD8<sup>+</sup> IL-17A<sup>+</sup> cells. Gating strategy for the analysis of Tc17 cells was shown. (B) Representative dot plots of Tc17 cells from NC, patients with CHB, and patients with HBV-ACLF. The value in the upper right quadrant indicated the frequency of Tc17 cells. (C) Tc17 cells were significantly higher in patients with HBV-ACLF than in either patients with CHB ( $P=0.002$ ) or NC subjects ( $P<0.001$ ). Moreover, the frequency of Tc17 cells was significantly higher in cirrhotic patients with HBV-ACLF than in non-cirrhotic patients with HBV-ACLF ( $P=0.034$ ). No differences were observed in Tc17 cells between HBeAg-positive and HBeAg-negative patients in the CHB group and in patients with HBV-ACLF. \* $P<0.05$ ; \*\* $P<0.01$ ; \*\*\* $P<0.001$ .

**Abbreviations:** ACLF, acute-on-chronic liver failure; CHB, chronic hepatitis B; eAg-P, HBeAg-positive; FSC, forward scatter; eAg-N, HBeAg-negative; HBV, hepatitis B virus; ns, not significant; NC, normal control; SSC, side scatter; Tc17, IL-17-producing CD8<sup>+</sup> T.

cells were significantly higher in non-surviving patients (median 2.11%, range 0.40%–7.48%) than in surviving patients (median 1.38%, range 0.36%–3.35%,  $P<0.001$ ; Figure 2C). Moreover, we stratified HBV-ACLF patients into three groups according to their disease severity on the basis of the Asian Pacific Association for the Study of the Liver ACLF Research Consortium grade system.<sup>20</sup> Interestingly, Tc17 cells progressively increased from the ACLF-I group (0.88%±0.40%,  $n=8$ ) to the ACLF-II group (2.12%±1.39%,  $n=44$ ; vs ACLF-I group,  $P<0.001$ ) to maximum in the ACLF-III group (3.01%±1.39%,  $n=14$ ; vs ACLF-II group,

$P=0.007$ ). MELD, MELD-Na, and CLIF-C ACLF scores are widely used to evaluate disease severity in patients with HBV-ACLF. In this study, these parameters were calculated at admission. The results were 26.89±4.17, 27.97±4.12, and 41.98±6.49 for the MELD score, MELD-Na score, and CLIF-C ACLF score, respectively. Next, correlations between Tc17 cells and these scores were examined. Interestingly, positive correlations were found between Tc17 cell frequency and MELD score ( $r=0.362$ ,  $P=0.003$ ), MELD-Na score ( $r=0.326$ ,  $P=0.007$ ), and CLIF-C ACLF score ( $r=0.313$ ,  $P=0.010$ ; Figure 2C). Collectively, these findings indicated



**Figure 2** Tc17 cells may play a proinflammatory role in the pathogenesis of HBV-ACLF.

**Notes:** Tc17 cells were found to be associated with Tbil levels, PTA levels, AST levels, and ALB levels in patients with CHB (A) and patients with HBV-ACLF (B). The frequencies of Tc17 cells were significantly higher in non-surviving patients than in surviving patients ( $P<0.001$ ). Moreover, the frequencies of Tc17 cells were positively correlated with MELD, MELD-Na, and CLIF-C ACLF scores (C). Lg (AST), AST levels were transformed into  $\log_{10}$ . Solid line, linear growth trend;  $r$ , correlation coefficient.  $***P<0.001$ .

**Abbreviations:** ACLF, acute-on-chronic liver failure; AST, aspartate aminotransferase; ALB, albumin; CHB, chronic hepatitis B; CLIF-C, chronic liver failure consortium; HBV, hepatitis B virus; MELD, model for end-stage liver disease; PTA, prothrombin time activity; TB, total bilirubin; Tc17, IL-17-producing CD8<sup>+</sup> T.

that Tc17 cells may play a proinflammatory role in the pathogenesis of HBV-ACLF.

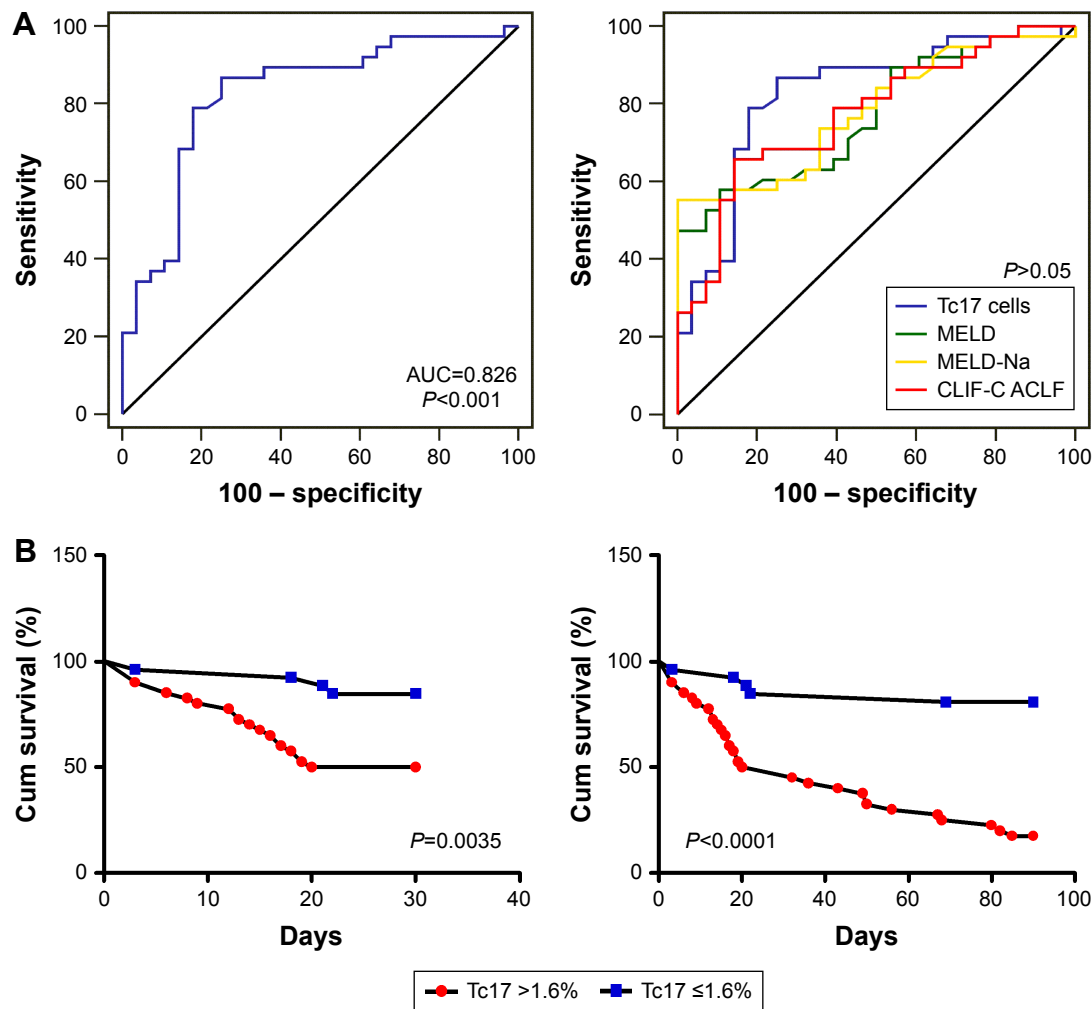
### Increased Tc17 cell frequency at admission indicated poor prognosis in patients with HBV-ACLF

The ROC curve analysis was used to evaluate the value of Tc17 cells in predicting prognosis. The area under the ROC curve (AUROC) was 0.826 (95% CI: 0.712–0.908,  $P<0.0001$ ; Figure 3A). The Youden index was used to identify the optimal cutoff value, defined as the value that maximized the sensitivity and specificity. With a cutoff value of 1.6%, the sensitivity was 86.84% (95% CI: 71.9%–95.6%) and the specificity was 75% (95% CI: 55.1%–89.3%). More importantly, no significant differences were observed between the AUROC values obtained using the Tc17 cell frequency and those obtained with the MELD score (AUROC=0.769,  $P=0.437$ ), MELD-Na score (AUROC=0.782,  $P=0.552$ ), or CLIF-C ACLF score (AUROC=0.773,  $P=0.474$ ; Figure 3A), indicating that the frequency of Tc17 cells at admission may have a prognostic value equivalent to that of these accepted scores.

Patients were then divided into two groups, a higher group (Tc17 cell frequency  $>1.6\%$ ,  $N=40$ ) and a lower group (Tc17 cell frequency  $\leq 1.6\%$ ,  $N=26$ ). The 30-day mortality rate was 15.4% (4/26) in the lower group but 50% (20/40,  $P=0.008$ ) in the higher group. The 90-day mortality rate was also lower in the lower group (5/26, 19.2%) than in the higher group (33/40, 82.5%,  $P<0.001$ ). Additionally, survival was examined by the Kaplan–Meier analysis. The log-rank test revealed significant differences between the higher group and the lower group in both the 30-day (chi-square=8.545,  $P=0.0035$ ) and 90-day (chi-square=23.98,  $P<0.0001$ ; Figure 3B) survival rate. Collectively, these data suggested that an increased frequency of Tc17 cells could be a useful predictor of mortality in patients with HBV-ACLF.

### Increased Tc17 cell frequency at admission could be an independent predictor of mortality

Baseline clinical and laboratory variables were analyzed as possible predictors of mortality. The basic characteristics of surviving and non-surviving patients with HBV-ACLF are



**Figure 3** Increased Tc17 cell frequency at admission indicated poor prognosis in HBV-ACLF.

**Notes:** (A) The prognostic value of Tc17 cell frequency was assessed by the ROC curve analysis. The AUROC for Tc17 cell frequency was 0.826 (95% CI: 0.712–0.908,  $P<0.001$ ). The Youden index was used to identify the optimal cutoff value. With a cutoff value of 1.6%, the sensitivity was 86.84% (95% CI: 71.9%–95.6%) and the specificity was 75% (95% CI: 55.1%–89.3%). Moreover, no significant differences were found between AUROC values obtained with Tc17 cell frequency and those obtained with the MELD (AUROC=0.769,  $P=0.437$ ), MELD-Na (AUROC=0.782,  $P=0.552$ ), or CLIF-C ACLF (AUROC=0.773,  $P=0.474$ ) scores, indicating that Tc17 cell frequency at admission may have a prognostic value equivalent to that of these accepted prognostic scores. (B) Survival was evaluated using Kaplan–Meier curves, and the statistics were compared by log-rank tests. Significant differences were found between the higher group (Tc17 cell frequency  $>1.6\%$ ) and the lower group (Tc17 cell frequency  $\leq 1.6\%$ ) in both 30-day (chi-square=8.545,  $P=0.0035$ ) and 90-day (chi-square=23.98,  $P<0.0001$ ) survival.

**Abbreviations:** AUC, area under the curve; ACLF, acute-on-chronic liver failure; AUROC, area under the ROC curve; CLIF-C, chronic liver failure consortium; Cum, cumulative; HBV, hepatitis B virus; MELD, model for end-stage liver disease; ROC curve, receiver operating characteristic curve; Tc17, IL-17-producing CD8<sup>+</sup> T.

summarized in Table 2. Compared with surviving patients, non-surviving patients were older, were more likely to be female, had higher levels of Tc17 cells and Tbil, had lower levels of PTA, and were more likely to be cirrhotic at baseline (Table 2). Next, the Cox regression analysis was used to identify predictors for HBV-ACLF. In the univariate analysis, female sex, cirrhosis, Tc17 cell frequency, Tbil levels, PTA levels, MELD score, MELD-Na score, and CLIF-C ACLF score were factors associated with a higher risk of mortality (Table 3). Next, we evaluated these significant variables in a multivariate Cox regression analysis by using forward stepwise (likelihood ratio) selection. Only female sex (HR=5.450,  $P<0.001$ ), Tc17 cell frequency (HR=1.401,  $P=0.001$ ), and

MELD-Na score (HR=1.344,  $P<0.001$ ) were found to be independent baseline predictors of mortality in patients with HBV-ACLF (Table 3).

### Tc17 cell frequency was positively correlated with serum IL-17A and IL-22 levels

Finally, we determined the serum levels of cytokines (IL-17A, IL-22, and IL-23) in NC subjects (N=17), patients with CHB (N=30), and patients with HBV-ACLF (N=38) by a FlowCytomix assay. IL-22 was detected in all three groups. IL-17A was detected in 38 patients with HBV-ACLF (100%), 23 patients with CHB (77%), and 8 NC subjects (47%).

**Table 2** Characteristics of patients with HBV-ACLF according to clinical outcome

Group	Surviving (n=28)	Non-surviving (n=38)	P-value
Female, n (%)	0 (0)	6 (16)	0.035
Age (years)	38.5 (18–67)	43.5 (29–75)	0.086
Cirrhosis	3	13	0.041
Antiviral therapy	19	24	0.796
MELD	24.67±2.80	28.53±4.28	<0.001
MELD-Na	25.74±2.79	29.62±4.18	<0.001
CLIF-c ACLF	38.44±5.13	44.59±6.19	<0.001
Tc17 cells (%)	1.38 (0.36–3.35)	2.11 (0.40–7.48)	<0.001
PLT (10 <sup>9</sup> /L)	119.5 (29–249)	86 (26–250)	0.065
Tbil (μmol/L)	379.7 (193–957.9)	565.5 (183.8–1,301.7)	0.009
PTA (%)	36 (23–40)	27 (17–40)	<0.001
AST (U/L)	161.5 (45–1,154)	195.5 (46–3,023)	0.371
ALT (U/L)	161 (15–1,688)	151 (23–1,986)	0.804
ALB (g/L)	36.60±5.84	35.08±4.80	0.250
Na (mmol/L)	138.4 (127.6–143.3)	137.3 (124.6–143.1)	0.195
Cr (μmol/L)	63 (44–102)	66.3 (34.5–161)	0.476
AFP (ng/mL)	85.85 (4–1,000)	23.18 (5.6–1,332.6)	0.039
HBV-DNA (log <sub>10</sub> IU/mL)	4.39 (2.70–7.44)	5.21 (2.70–8.39)	0.128

**Note:** Data are shown as mean and standard deviations or medians and ranges.

**Abbreviations:** ACLF, acute-on-chronic liver failure; AFP, alpha-fetoprotein; ALB, albumin; ALT, alanine aminotransferase; AST, aspartate aminotransferase; CLIF-c, chronic liver failure consortium; Cr, creatinine; HBV, hepatitis B virus; MELD, model for end-stage liver disease; PLT, platelet counts; PTA, prothrombin time activity; Tbil, total bilirubin; Tc17, IL-17-producing CD8<sup>+</sup> T.

However, only 11 patients with CHB (37%) and 23 patients with HBV-ACLF (60%) had detectable IL-23, while IL-23 was not detectable in the NC subjects. Moreover, IL-17A levels were higher in patients with HBV-ACLF (median

**Table 3** Factors associated with mortality in patients with HBV-ACLF by using the Cox regression analysis

Parameters	Wald	P-value	HR	95% CI
<b>Univariate analysis</b>				
Age (years)	2.939	0.086	1.022	0.997–1.048
Gender (female)	10.931	0.001	4.771	1.889–12.047
Cirrhosis	4.733	0.03	2.128	1.078–4.203
Tc17 cells (%)	12.581	<0.001	1.340	1.140–1.575
MELD	29.483	<0.001	1.290	1.177–1.414
MELD-Na	29.766	<0.001	1.324	1.197–1.464
CLIF-c ACLF	17.655	<0.001	1.101	1.053–1.152
Tbil (μmol/L)	8.502	0.004	1.002	1.001–1.003
PTA (%)	20.597	<0.001	0.882	0.835–0.931
PLT (10 <sup>9</sup> /L)	2.846	0.092	0.994	0.988–1.001
AFP (ng/mL)	0.565	0.452	1.000	0.998–1.001
<b>Multivariate analysis</b>				
Gender (female)	12.181	<0.001	5.450	2.103–14.122
Tc17 cells (%)	12.106	0.001	1.401	1.159–1.694
MELD-Na	26.546	<0.001	1.344	1.201–1.503

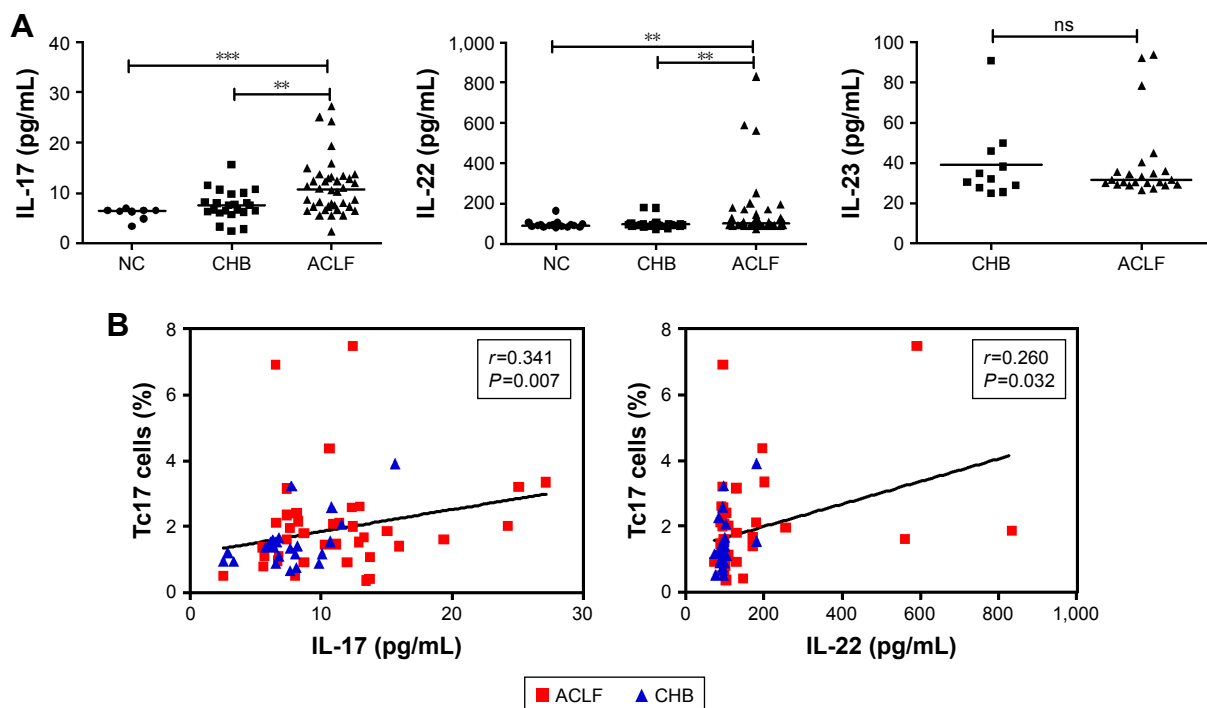
**Abbreviations:** ACLF, acute-on-chronic liver failure; AFP, alpha-fetoprotein; CLIF-c, chronic liver failure consortium; HBV, hepatitis B virus; MELD, model for end-stage liver disease; PLT, platelet counts; PTA, prothrombin time activity; Tbil, total bilirubin; Tc17, IL-17-producing CD8<sup>+</sup> T.

10.81, range 2.50–27.18 pg/mL) than in patients with CHB (7.65±2.95 pg/mL,  $P=0.004$ ) and NC subjects (median 6.47, range 3.45–7.01 pg/mL,  $P<0.001$ ). In addition, IL-22 levels were higher in patients with HBV-ACLF (median 101.16, range 73.20–832.31 pg/mL) than in patients with CHB (median 94.68, range 73.20–181.59 pg/mL,  $P=0.004$ ) and NC subjects (median 91.24, range 82.47–163.8 pg/mL,  $P=0.002$ ). However, IL-23 levels did not differ between patients with HBV-ACLF (median 31.70, range 26.56–93.92 pg/mL) and patients with CHB (median 32.16, range 25.07–90.74 pg/mL,  $P=0.892$ ; Figure 4A). Next, correlations between the expression of Tc17 cells and these cytokines in HBV-infected patients were examined. Interestingly, positive correlations were found between the frequency of Tc17 cells and the levels of both IL-17A ( $r=0.341$ ,  $P=0.007$ ) and IL-22 ( $r=0.260$ ,  $P=0.032$ ; Figure 4B). However, no correlation was found between Tc17 cell frequency and IL-23 level ( $r=0.030$ ,  $P=0.867$ ). These data indicated that Tc17 cells may represent an additional source of IL-17 in HBV-infected patients.

## Discussion

Although the pathogenic role of Tc17 cells has been explored in inflammatory diseases and tumors, much less is known about the role of Tc17 cells in patients with HBV-ACLF. To our knowledge, this study is the first to extensively determine the role of Tc17 cells in patients with HBV-ACLF. We present evidence that Tc17 cells increase in frequency and participate in the pathogenesis of HBV-ACLF. Furthermore, this study is the first to demonstrate that an increased frequency of Tc17 cells predicts poor overall patient survival. Additionally, Tc17 cell frequency is shown to be an independent prognostic factor by the multivariate Cox regression analysis.

Tc17 cells were found to be enriched in patients with chronic hepatitis C<sup>13,14</sup> and hepatocellular carcinomas.<sup>21</sup> These data indicate that Tc17 cells may contribute to immune-mediated inflammation. Thus, we hypothesized that Tc17 cells may be involved in the process of HBV-induced liver injury. A previous report showed that Tc17 cells were enriched in HBeAg-positive patients with CHB as compared to those in healthy individuals, but the difference was not significant.<sup>22</sup> However, we showed that the frequency of Tc17 cells was increased significantly in patients with CHB as compared to that in NC subjects ( $P=0.019$ ). This discrepancy could be explained by the different disease status of patients enrolled in this study (a greater proportion of HBeAg-negative and deteriorated patients were chosen). Moreover, Tc17 cell frequency was closely correlated with Tbil, PTA, AST, and ALB levels, indicating that Tc17 cells were associated with liver injury.



**Figure 4** Tc17 cell frequency was positively correlated with serum IL-17A and IL-22 levels.

**Notes:** (A) Serum levels of cytokines (IL-17A, IL-22, and IL-23) were determined by a FlowCytomix assay. IL-17A levels and IL-22 levels were higher in patients with HBV-ACLF than in patients with CHB and NC subjects. However, the IL-23 level did not differ between patients with HBV-ACLF and those patients with CHB. (B) Positive correlations were found between the frequency of Tc17 cells and the levels of both IL-17A ( $r=0.341$ ,  $P=0.007$ ) and IL-22 ( $r=0.260$ ,  $P=0.032$ ). However, no correlation was found between Tc17 cell frequency and IL-23 level ( $r=0.030$ ,  $P=0.867$ ). These data indicated that Tc17 cells may be an additional source of IL-17 in HBV-infected patients.  $**P<0.01$ ;  $***P<0.001$ . Solid line, linear growth trend;  $r$ , correlation coefficient.

**Abbreviations:** ACLF, acute-on-chronic liver failure; CHB, chronic hepatitis B; HBV, hepatitis B virus; NC, normal control; ns, not significant; Tc17, IL-17-producing CD8<sup>+</sup> T.

Knowledge about the implication of Tc17 cells in the pathogenesis of HBV-ACLF is currently limited. Therefore, the role of Tc17 cells in HBV-ACLF was extensively explored. Consistent with our hypothesis, our results indicate that an increased frequency of Tc17 cells is associated with liver injury in patients with HBV-ACLF. Substantial evidence supports this hypothesis. First, we demonstrated that patients with HBV-ACLF had higher levels of Tc17 cells than patients with CHB ( $P=0.002$ ) and NC subjects ( $P<0.001$ ) and that Tc17 cell frequency was positively correlated with Tbil and AST levels but was negatively correlated with PTA and ALB levels (all  $P<0.05$ ), which are often used as markers of liver injury.<sup>23</sup> Additionally, the frequency of Tc17 cells was higher in non-surviving patients with HBV-ACLF than in surviving patients ( $P<0.001$ ). More importantly, Tc17 cell frequency was positively correlated with MELD, MELD-Na, and CLIF-C ACLF scores (all  $P<0.05$ ). Collectively, these results indicate that Tc17 cells may play a proinflammatory role in the pathogenesis of HBV-ACLF.

Researchers reported that intratumoral Tc17 cells increased with tumor progression and were associated with overall survival time in gastric cancer.<sup>24</sup> Additionally,

another report showed that peripheral Tc17 cells were negatively correlated with the 5-year survival rate for patients with head and neck cancer.<sup>25</sup> These studies indicate a clinical prognostic value of Tc17 cells. This study is the first to demonstrate that Tc17 cell frequency can be used to predict the prognosis of patients with HBV-ACLF. Indeed, we found that higher levels of Tc17 cells were associated with poorer clinical outcomes. Moreover, the ROC curve analysis showed that Tc17 cell frequency predicted 90-day survival with an accuracy equivalent to that of MELD, MELD-Na, and CLIF-C ACLF scores (all  $P>0.05$ ). The Kaplan–Meier analysis revealed that Tc17 cell enrichment was associated with poor overall survival. Additionally, the multivariate Cox regression analysis suggested that Tc17 cell frequency was an independent predictor of overall survival in patients with HBV-ACLF. Taken together, these data strongly indicated that peripheral Tc17 cells could serve as a prognostic biomarker. Moreover, Tc17 cell frequency was inversely correlated with survival, suggesting that the frequency of circulating Tc17 cells may be an indicative factor to guide further treatment decisions. If validated in the future, Tc17 cell frequency measured by a simple and



accessible technique could be a prognostic biomarker to identify patients at risk of death.

IL-17 is a key pathogenic cytokine in liver diseases.<sup>26</sup> Although Th17 cells are thought to be the main producer of IL-17, other immune cells can also produce IL-17. Hence, the identification of all potential IL-17 sources in HBV-ACLF is important. Tc17 cells are defined by their ability to produce IL-17; in addition, Tc17 cells coexpress other cytokines, including IFN-gamma and TNF-alpha.<sup>10</sup> In our study, IL-17A and IL-22 levels were higher in patients with HBV-ACLF than in patients with CHB and NC subjects. Moreover, the frequencies of Tc17 cells were positively correlated with IL-17A and IL-22 levels (both  $P < 0.05$ ). These data indicate that Tc17 cells may represent an additional source of IL-17 in HBV-infected patients.

The similarity of the cytokine profile of Tc17 cells to that of Th17 cells provides a basis for using Th17 cell differentiation conditions to expand Tc17 cells. For example, IL-23 is often used to expand human Th17 cells.<sup>27</sup> In mice, IL-23 induced IL-17 expression only slightly and maintained the Tc17 cell phenotype.<sup>28,29</sup> However, the role of IL-23 in human Tc17 cells is not yet clarified. In the present study, no significant correlation was found between Tc17 cell frequency and IL-23 levels, indicating that the role of IL-23 in Tc17 cell differentiation may differ from its role in Th17 cells. Thus, further investigations are required to confirm the role of IL-23 in Tc17 cells in humans.

This study has some limitations. First, our sample size was relatively small. Moreover, the present study was a single-center investigation in China. The findings need to be confirmed in large multicenter and prospective studies.

## Conclusion

Our findings demonstrate that Tc17 cells are preferentially enriched in patients with HBV-ACLF and that this increase positively correlates with liver injury and disease severity. Thus, Tc17 cells may play a proinflammatory role in the pathogenesis of HBV-ACLF. Furthermore, our data indicate that an increased frequency of circulating Tc17 cells could be an independent predictor of mortality in patients with HBV-ACLF. Therefore, future therapeutic strategies aimed at interfering with Tc17 cell pathways may benefit patients with HBV-ACLF.

## Abbreviations

AFP, alpha-fetoprotein; ACLF, acute-on-chronic liver failure; ALB, albumin; ALT, alanine aminotransferase; AST, aspartate aminotransferase; AUROC, area under the ROC curve; CHB, chronic hepatitis B; CLIF-C, chronic liver failure

consortium; HBV, hepatitis B virus; HCV, hepatitis C virus; MELD, model for end-stage liver disease; NC, normal control; PTA, prothrombin time activity; ROC curve, receiver operating characteristic curve; Tbil, total bilirubin; Tc17, IL-17-producing CD8<sup>+</sup> T.

## Availability of data

The datasets used or analyzed during the current study are available from the first author (Geng-lin Zhang) on reasonable request.

## Acknowledgments

The authors thank all individuals in this study. The manuscript has been edited and proofread by a medical editor, a native English speaker from American Journal Experts. This study was supported by grants from the National Science and Technology Major Project (2018Z×10302204-002), National Natural Science Foundation of China (81672701), Guangdong Province Medical Research (A2017048), and Guangzhou Science and Technology Project (201508020118, 2014Y2-00544).

## Author contributions

All authors contributed toward data analysis, drafting and critically revising the paper and agree to be accountable for all aspects of the work.

## Disclosure

The authors report no conflicts of interest in this work.

## References

- Bernal W, Jalan R, Quaglia A, Simpson K, Wendon J, Burroughs A. Acute-on-chronic liver failure. *Lancet*. 2015;386(10003):1576-1587.
- Wang FS, Zhang Z. Liver: How can acute-on-chronic liver failure be accurately identified? *Nat Rev Gastroenterol Hepatol*. 2013;10(7):390-391.
- Seto WK, Lai CL, Yuen MF. Acute-on-chronic liver failure in chronic hepatitis B. *J Gastroenterol Hepatol*. 2012;27(4):662-669.
- Clària J, Stauber RE, Coenraad MJ, et al. Systemic inflammation in decompensated cirrhosis: Characterization and role in acute-on-chronic liver failure. *Hepatology*. 2016;64(4):1249-1264.
- Wu W, Yan H, Zhao H, et al. Characteristics of systemic inflammation in hepatitis B-precipitated ACLF: Differentiate it from No-ACLF. *Liver Int*. 2018;38(2):248-257.
- Tesmer LA, Lundy SK, Sarkar S, Fox DA. Th17 cells in human disease. *Immunol Rev*. 2008;223:87-113.
- Kondo T, Takata H, Matsuki F, Takiguchi M. Cutting edge: Phenotypic characterization and differentiation of human CD8<sup>+</sup> T cells producing IL-17. *J Immunol*. 2009;182(4):1794-1798.
- Huber M, Heink S, Grothe H, et al. A Th17-like developmental process leads to CD8(+) Tc17 cells with reduced cytotoxic activity. *Eur J Immunol*. 2009;39(7):1716-1725.
- Liang Y, Pan HF, Ye DQ. Tc17 Cells in Immunity and Systemic Autoimmunity. *Int Rev Immunol*. 2015;34(4):318-331.
- Srenathan U, Steel K, Taams LS. IL-17+ CD8+ T cells: Differentiation, phenotype and role in inflammatory disease. *Immunol Lett*. 2016;178:20-26.

11. Majchrzak K, Nelson MH, Bailey SR, et al. Exploiting IL-17-producing CD4+ and CD8+ T cells to improve cancer immunotherapy in the clinic. *Cancer Immunol Immunother*. 2016;65(3):247–259.
12. Hamada H, Garcia-Hernandez ML, Reome JB, et al. Tc17, a unique subset of CD8 T cells that can protect against lethal influenza challenge. *J Immunol*. 2009;182(6):3469–3481.
13. Billerbeck E, Kang YH, Walker L, et al. Analysis of CD161 expression on human CD8+ T cells defines a distinct functional subset with tissue-homing properties. *Proc Natl Acad Sci U S A*. 2010;107(7):3006–3011.
14. Oo YH, Banz V, Kavanagh D, et al. CXCR3-dependent recruitment and CCR6-mediated positioning of Th-17 cells in the inflamed liver. *J Hepatol*. 2012;57(5):1044–1051.
15. Sarin SK, Kumar A, Almeida JA, et al. Acute-on-chronic liver failure: consensus recommendations of the Asian Pacific Association for the study of the liver (APASL). *Hepatol Int*. 2009;3(1):269–282.
16. Zhang GL, Xie DY, Lin BL, et al. Imbalance of interleukin-17-producing CD4 T cells/regulatory T cells axis occurs in remission stage of patients with hepatitis B virus-related acute-on-chronic liver failure. *J Gastroenterol Hepatol*. 2013;28(3):513–521.
17. Peng L, Xie DY, Lin BL, et al. Autologous bone marrow mesenchymal stem cell transplantation in liver failure patients caused by hepatitis B: short-term and long-term outcomes. *Hepatology*. 2011;54(3):820–828.
18. Kim WR, Biggins SW, Kremers WK, et al. Hyponatremia and mortality among patients on the liver-transplant waiting list. *N Engl J Med*. 2008;359(10):1018–1026.
19. Jalan R, Saliba F, Pavesi M, et al. CANONIC study investigators of the EASL-CLIF Consortium. Development and validation of a prognostic score to predict mortality in patients with acute-on-chronic liver failure. *J Hepatol*. 2014;61(5):1038–1047.
20. Sarin SK, Choudhury A. Management of acute-on-chronic liver failure: an algorithmic approach. *Hepatol Int*. Epub 2018 Aug 16.
21. Kuang DM, Peng C, Zhao Q, et al. Tumor-activated monocytes promote expansion of IL-17-producing CD8+ T cells in hepatocellular carcinoma patients. *J Immunol*. 2010;185(3):1544–1549.
22. Li J, Shi J, Ren W, Wu W, Chen Z. Regulatory role of CD4(+)CD25(+) Foxp3(+) regulatory T cells on IL-17-secreting T cells in chronic hepatitis B patients. *Dig Dis Sci*. 2014;59(7):1475–1483.
23. Rehermann B, Nascimbeni M. Immunology of hepatitis B virus and hepatitis C virus infection. *Nat Rev Immunol*. 2005;5(3):215–229.
24. Zhuang Y, Peng LS, Zhao YL, et al. CD8(+) T cells that produce interleukin-17 regulate myeloid-derived suppressor cells and are associated with survival time of patients with gastric cancer. *Gastroenterology*. 2012;143(4):951–962.e8.
25. Lee MH, Tung-Chieh Chang J, Liao CT, Chen YS, Kuo ML, Shen CR. Interleukin 17 and peripheral IL-17-expressing T cells are negatively correlated with the overall survival of head and neck cancer patients. *Oncotarget*. 2018;9(11):9825–9837.
26. Hammerich L, Heymann F, Tacke F. Role of IL-17 and Th17 cells in liver diseases. *Clin Dev Immunol*. 2011;2011:345803.
27. Stockinger B, Omenetti S. The dichotomous nature of T helper 17 cells. *Nat Rev Immunol*. 2017;17(9):535–544.
28. Curtis MM, Way SS, Wilson CB. IL-23 promotes the production of IL-17 by antigen-specific CD8 T cells in the absence of IL-12 and type-I interferons. *J Immunol*. 2009;183(1):381–387.
29. El-Behi M, Dai H, Magalhaes JG, et al. Committed Tc17 cells are phenotypically and functionally resistant to the effects of IL-27. *Eur J Immunol*. 2014;44(10):3003–3014.

## Therapeutics and Clinical Risk Management

### Publish your work in this journal

Therapeutics and Clinical Risk Management is an international, peer-reviewed journal of clinical therapeutics and risk management, focusing on concise rapid reporting of clinical studies in all therapeutic areas, outcomes, safety, and programs for the effective, safe, and sustained use of medicines. This journal is indexed on PubMed Central, CAS,

Submit your manuscript here: <http://www.dovepress.com/therapeutics-and-clinical-risk-management-journal>

Dovepress

EMBASE, Scopus and the Elsevier Bibliographic databases. The manuscript management system is completely online and includes a very quick and fair peer-review system, which is all easy to use. Visit <http://www.dovepress.com/testimonials.php> to read real quotes from published authors.